

V&V Reference Report

L2 ASCDS Version : 8.4.3

Observation 59296 - L2 Version 2
Chandra X-Ray Center

L2 Processing Date : Mar 17 2012

Contents

1	Front	2
2	OBI	3
2.1	OBI	3
2.1.1	Images	3
2.1.2	Bias	3
2.1.3	Parameters	4
2.1.4	Events	4
2.2	Compared Parameters	5
2.3	Star Slots	6
2.4	FID Slots	6
A	Summary	7
A.1	Status	7
A.2	Comments	7

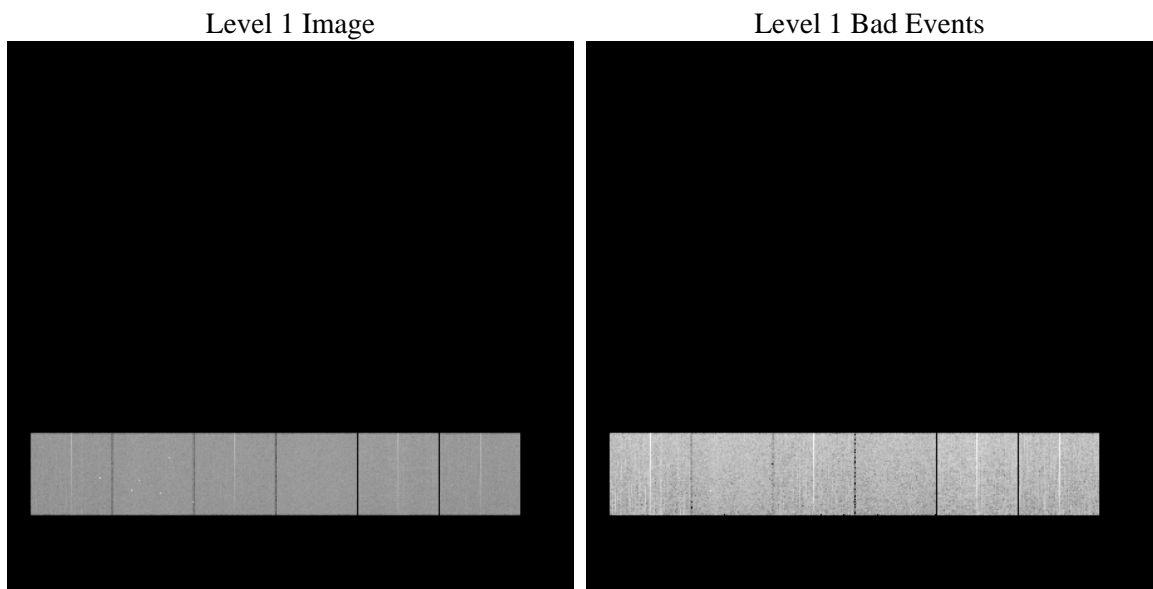
1 Front

seq_num	 	Sequence number
obs_id	59296	Observation id
title	ACIS-456789 diagnostics	Proposal title
observer	CHANDRA engineering request/realtime commanding	Principal investig
object	 	Source name
dtcycle	0	
cycle	P	events from which exps? Prim/Second/Both
ra_targ	0.0	Observer's specified target RA [deg]
dec_targ	0.0	Observer's specified target Dec [deg]
ra_nom	184.98167266333	Nominal RA [deg]
dec_nom	-29.976185441797	Nominal Dec [deg]
roll_nom	90.78427448519	Nominal Roll [deg]
revision	2	Processing version of data
ontime	8278.3999691606	Sum of GTIs [s]
livetime	8173.573884097	Livetime [s]
ontime4	7895.8515352309	Sum of GTIs [s]
ontime5	8278.3667802513	Sum of GTIs [s]
ontime6	8265.3618891537	Sum of GTIs [s]
ontime7	8278.3999691606	Sum of GTIs [s]
ontime8	8278.2436602712	Sum of GTIs [s]
ontime9	8161.7253588736	Sum of GTIs [s]
l2events	1028535	Number of level 2 events

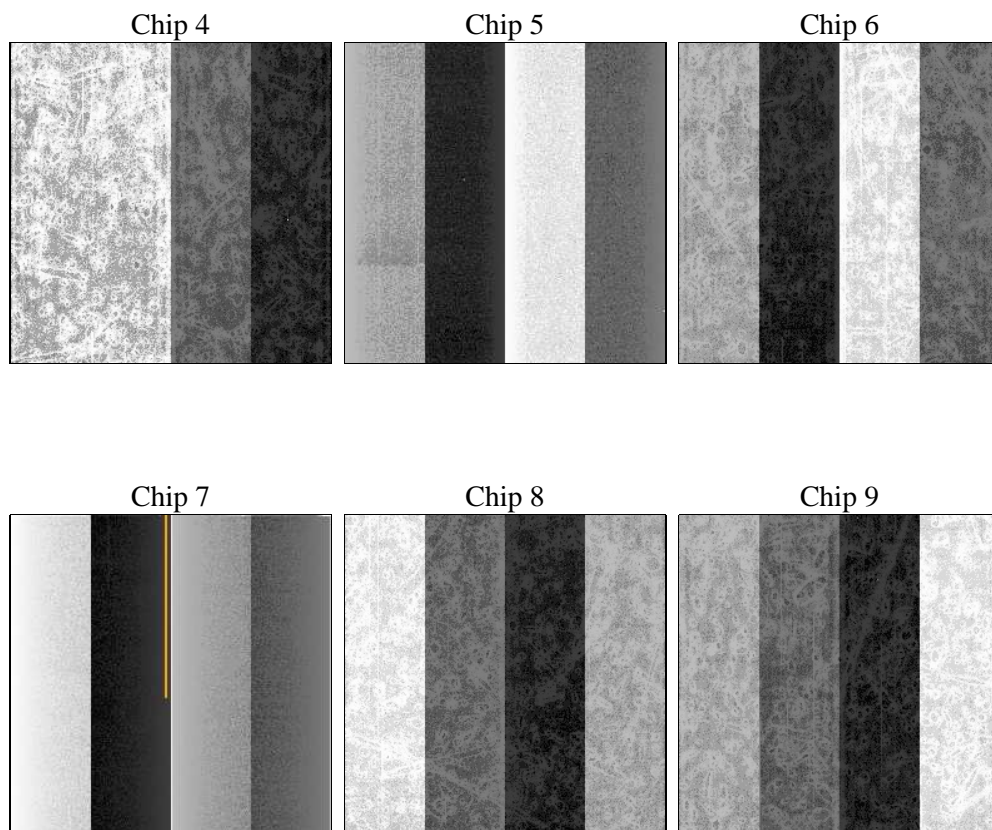
2 OBI

2.1 OBI

2.1.1 Images



2.1.2 Bias



2.1.3 Parameters

obi_num	0	Obi number	sched_exp_time	0.0	[s] Scheduled observation exposure time
ascdsver	8.4.3	Processing system revision	ontime	8278.3999691606	Sum of GTIs [s]
caldsver	4.4.8	 	ontime4	7895.8515352309	Sum of GTIs [s]
date	2012-03-17T03:12:12	Date and time of file creation	ontime5	8278.3667802513	Sum of GTIs [s]
revision	2	Processing version of data	ontime6	8265.3618891537	Sum of GTIs [s]
			ontime7	8278.3999691606	Sum of GTIs [s]
			ontime8	8278.2436602712	Sum of GTIs [s]
			ontime9	8161.7253588736	Sum of GTIs [s]
			l1events	1478918	Number of level 1 events

2.1.4 Events

	ccd 4	ccd 5	ccd 6	ccd 7	ccd 8	ccd 9		ccd 4	ccd 5	ccd 6	ccd 7	ccd 8	ccd 9
level 1 events	231013	245673	245401	256449	263487	236895	grade 0 events	95795	37845	98996	46273	102105	94789
rejected events	67017	60045	62080	54039	72130	63782		41%	15%	40%	18%	38%	40%
rejected %	29%	24%	25%	21%	27%	26%	grade 1 events	776	217	543	184	584	615
								0%	0%	0%	0%	0%	0%
							grade 2 events	25740	66892	32018	44247	34280	29566
								11%	27%	13%	17%	13%	12%
							grade 3 events	10760	10392	11473	19957	12836	11216
								4%	4%	4%	7%	4%	4%
							grade 4 events	10855	10482	11452	19779	12712	11303
								4%	4%	4%	7%	4%	4%
							grade 5 events	3580	9042	3982	9164	4892	4241
								1%	3%	1%	3%	1%	1%
							grade 6 events	20917	60097	29458	72228	29511	26314
								9%	24%	12%	28%	11%	11%
							grade 7 events	62590	50706	57479	44617	66567	58851
								27%	20%	23%	17%	25%	24%

2.2 Compared Parameters

Parameter	Planned	Actual	Parameter	Planned	Actual
Instrument	ACIS	ACIS	Obspar format version number	7	7
Detector	ACIS-456789	ACIS-456789	Obspar file type	PREDICTED	ACTUAL
Grating	NONE	NONE	Obspar update status	NONE	UPDATED
Data mode	FAINT	FAINT	On-chip summing requested	N	N
Observation mode	SECONDARY	SECONDARY	Subarray requested	NONE	NONE
[deg] Pointing RA	0	184.9816726633272	Alternating exposures requested	N	N
[deg] Pointing Dec	0	-29.97618544179672	[s] Primary exposure time	3.2	3.2
[deg] Pointing Roll	0.0	90.78427448518964			
[mm] SIM focus pos	-0.684267	-0.7809083437167272			
[mm] SIM defocus	0	0.7524282956875696			
[mm] SIM translation stage pos	-190.132523	250.466033080201			
[mm] SIM translation stage offset	0	-0.01005468664627074			
[s] Observation start time (MET)	248827756.760423	248827755.73543			
Observation start date	2005-11-19T22:49:17	2005-11-19T22:49:15			
[s] Observation end time (MET)	248850901.261492	248850900.2365			
Observation end date	2005-11-20T05:15:01	2005-11-20T05:15:00			
Read mode	TIMED	TIMED			

2.3 Star Slots

2.4 FID Slots

A Summary

A.1 Status

V&V Scientist	Beth Sundheim
V&V Date (YYYY-MM-DD)	2012.03.18
V&V Edition	1
V&V Disposition and Status	OK
V&V Charge Time	8.2783999691606

A.2 Comments