

V&V Reference Report

L2 ASCDS Version : 8.4.3

Observation 59206 - L2 Version 2
Chandra X-Ray Center

L2 Processing Date : Mar 21 2012

Contents

1	Front	2
2	OBI	3
2.1	OBI	3
2.1.1	Images	3
2.1.2	Bias	3
2.1.3	Parameters	4
2.1.4	Events	4
2.2	Compared Parameters	5
2.3	Star Slots	6
2.4	FID Slots	6
A	Summary	7
A.1	Status	7
A.2	Comments	7

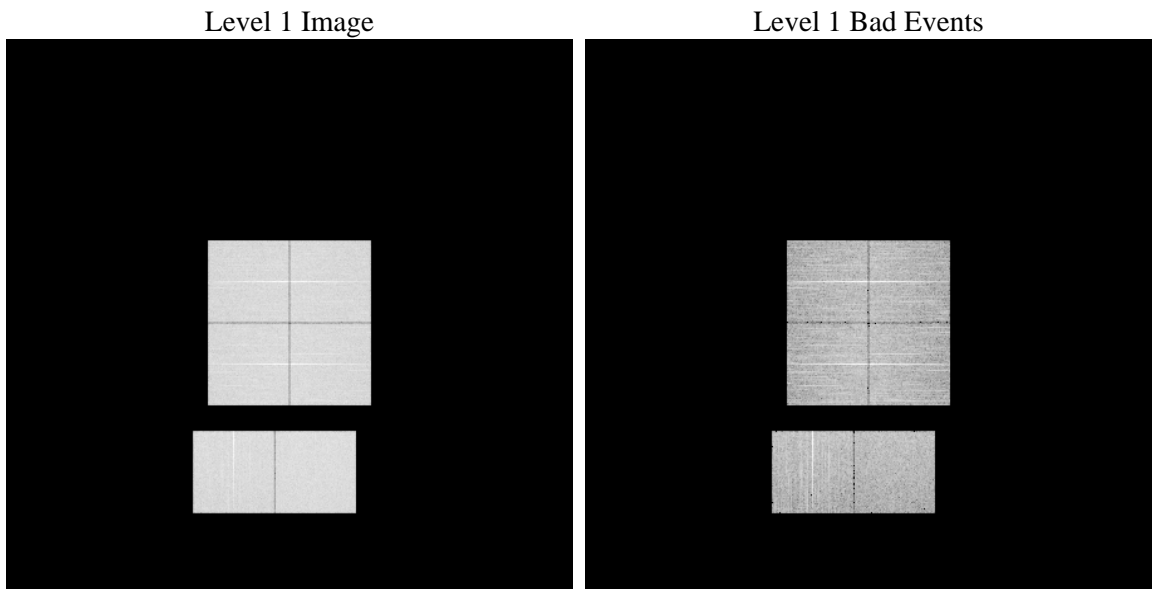
1 Front

seq_num	 	Sequence number
obs_id	59206	Observation id
title	ACIS-012367 diagnostics	Proposal title
observer	CHANDRA engineering request/realtime commanding	Principal investig
object	 	Source name
dtcycle	0	
cycle	P	events from which exps? Prim/Second/Both
ra_targ	0.0	Observer's specified target RA [deg]
dec_targ	0.0	Observer's specified target Dec [deg]
ra_nom	87.028208313177	Nominal RA [deg]
dec_nom	-3.4949795578877	Nominal Dec [deg]
roll_nom	337.29603063813	Nominal Roll [deg]
revision	2	Processing version of data
ontime	8278.3999691606	Sum of GTIs [s]
livetime	8173.573884097	Livetime [s]
ontime0	8278.3999691606	Sum of GTIs [s]
ontime1	8278.3999691606	Sum of GTIs [s]
ontime2	8278.3999691606	Sum of GTIs [s]
ontime3	8278.3999691606	Sum of GTIs [s]
ontime6	8278.3999691606	Sum of GTIs [s]
ontime7	8278.3999691606	Sum of GTIs [s]
l2events	1008546	Number of level 2 events

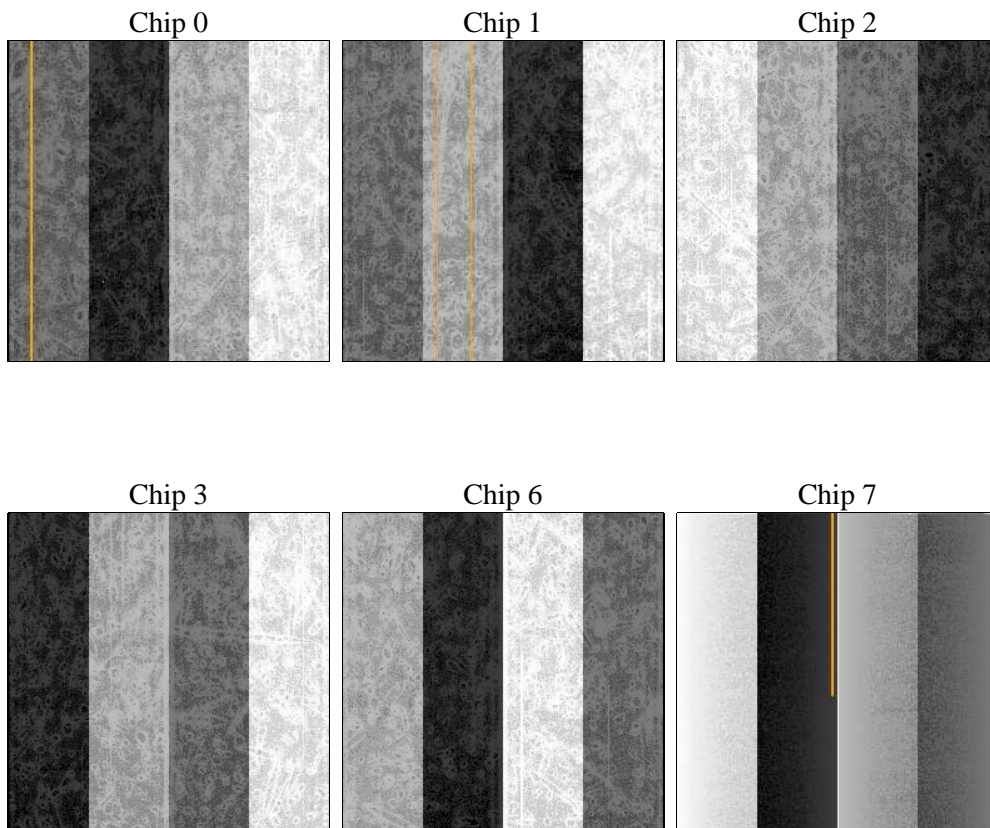
2 OBI

2.1 OBI

2.1.1 Images



2.1.2 Bias



2.1.3 Parameters

obi_num	0	Obi number	sched_exp_time	0.0	[s] Scheduled observation exposure time
ascdsver	8.4.3	Processing system revision	ontime	8278.3999691606	Sum of GTIs [s]
caldsver	4.4.8	 	ontime0	8278.3999691606	Sum of GTIs [s]
date	2012-03-21T07:03:07	Date and time of file creation	ontime1	8278.3999691606	Sum of GTIs [s]
revision	2	Processing version of data	ontime2	8278.3999691606	Sum of GTIs [s]
			ontime3	8278.3999691606	Sum of GTIs [s]
			ontime6	8278.3999691606	Sum of GTIs [s]
			ontime7	8278.3999691606	Sum of GTIs [s]
			l1events	1428243	Number of level 1 events

2.1.4 Events

	ccd 0	ccd 1	ccd 2	ccd 3	ccd 6	ccd 7		ccd 0	ccd 1	ccd 2	ccd 3	ccd 6	ccd 7
level 1 events	229732	230365	237735	235513	242091	252807	grade 0 events	92540	93247	95685	96530	96255	45500
rejected events	60270	59022	66055	62560	64014	54561		40%	40%	40%	40%	39%	17%
rejected %	26%	25%	27%	26%	26%	21%	grade 1 events	563	482	603	651	514	167
								0%	0%	0%	0%	0%	0%
							grade 2 events	29640	30433	28960	29714	30774	42949
								12%	13%	12%	12%	12%	16%
							grade 3 events	11137	11103	11321	11343	11311	19534
								4%	4%	4%	4%	4%	7%
							grade 4 events	10966	11124	11371	11389	11211	19532
								4%	4%	4%	4%	4%	7%
							grade 5 events	3620	3830	3378	3917	3890	9547
								1%	1%	1%	1%	1%	3%
							grade 6 events	25179	25436	24343	23977	28526	70731
								10%	11%	10%	10%	11%	27%
							grade 7 events	56087	54710	62074	57992	59610	44847
								24%	23%	26%	24%	24%	17%

2.2 Compared Parameters

Parameter	Planned	Actual	Parameter	Planned	Actual
Instrument	ACIS	ACIS	Obspar format version number	7	7
Detector	ACIS-012367	ACIS-012367	Obspar file type	PREDICTED	ACTUAL
Grating	NONE	NONE	Obspar update status	NONE	UPDATED
Data mode	FAINT	FAINT	On-chip summing requested	N	N
Observation mode	SECONDARY	SECONDARY	Subarray requested	NONE	NONE
[deg] Pointing RA	0	87.02820831317746	Alternating exposures requested	N	N
[deg] Pointing Dec	0	-3.494979557887688	[s] Primary exposure time	3.2	3.2
[deg] Pointing Roll	0.0	337.2960306381329			
[mm] SIM focus pos	-0.782348	-1.526339935833849			
[mm] SIM defocus	0	0.006996703570447904			
[mm] SIM translation stage pos	-233.592463	250.4635187648994			
[mm] SIM translation stage offset	0	-0.007540371344731511			
[s] Observation start time (MET)	252266951.719474	252266950.69447			
Observation start date	2005-12-29T18:09:12	2005-12-29T18:09:10			
[s] Observation end time (MET)	252279384.97005	252279383.94505			
Observation end date	2005-12-29T21:36:25	2005-12-29T21:36:23			
Read mode	TIMED	TIMED			

2.3 Star Slots

2.4 FID Slots

A Summary

A.1 Status

V&V Scientist	Jen Lauer
V&V Date (YYYY-MM-DD)	2012.03.21
V&V Edition	1
V&V Disposition and Status	OK
V&V Charge Time	8.2783999691606

A.2 Comments