

V&V Reference Report

L2 ASCDS Version : 8.4.3

Observation 5906 - L2 Version 2
Chandra X-Ray Center

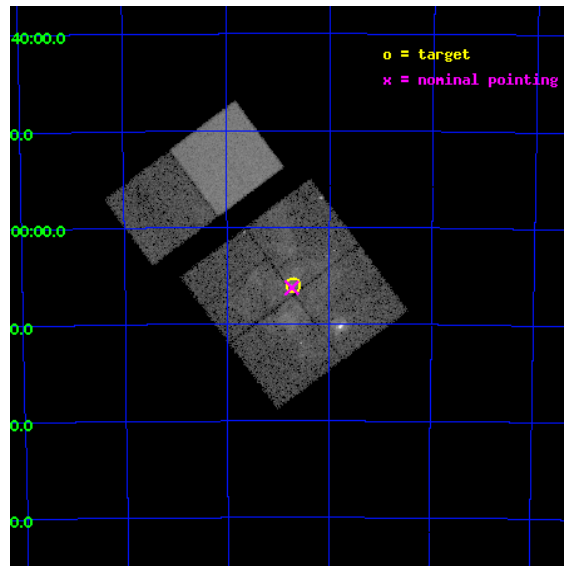
L2 Processing Date : Mar 24 2012

Contents

1	Front	2
2	OBI	3
2.1	OBI	3
2.1.1	Images	3
2.1.2	Bias	3
2.1.3	Parameters	4
2.1.4	Events	4
2.2	Compared Parameters	5
2.3	Aspect	6
2.4	Star Slots	9
2.4.1	Slot 3	9
2.4.2	Slot 4	10
2.4.3	Slot 5	11
2.4.4	Slot 6	12
2.4.5	Slot 7	13
2.5	FID Slots	14
2.5.1	Slot 0	14
2.5.2	Slot 1	15
2.5.3	Slot 2	16
A	Summary	17
A.1	Status	17
A.2	Comments	17

1 Front

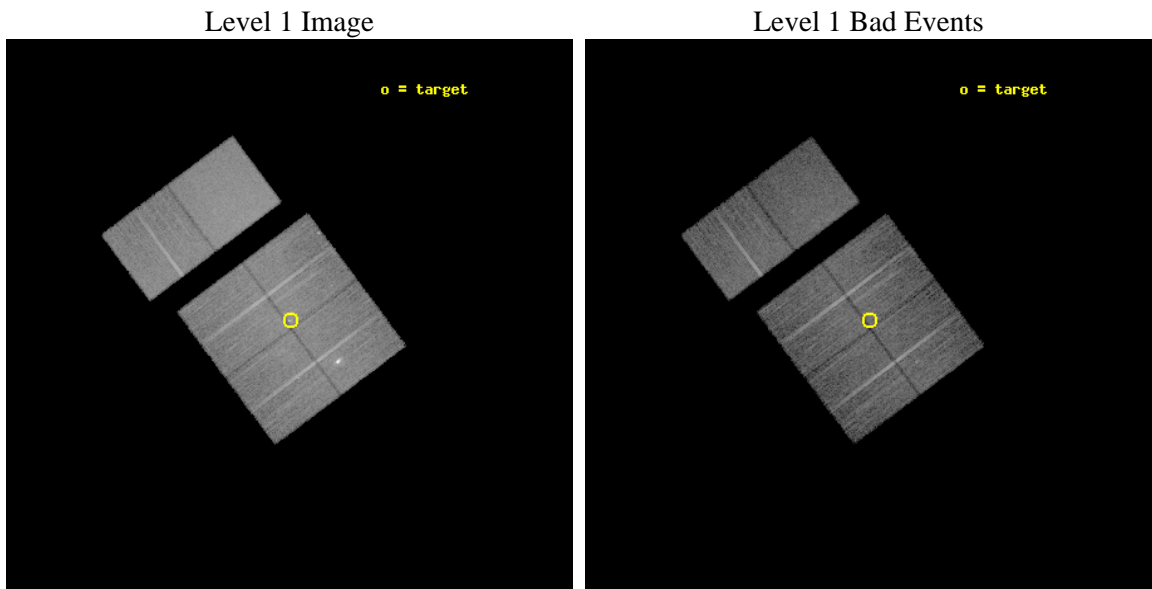
seq_num	600425	Sequence number
obs_id	5906	Observation id
title	30 Doradus: Our Starburst Microscope	Proposal title
observer	Dr. Leisa Townsley	Principal investigator
object	30 Doradus	Source name
dtcycle	0	
cycle	P	events from which exps? Prim/Second/Both
ra_targ	84.676667	Observer's specified target RA [deg]
dec_targ	-69.100556	Observer's specified target Dec [deg]
ra_nom	84.683101723794	Nominal RA [deg]
dec_nom	-69.104569110267	Nominal Dec [deg]
roll_nom	323.21469725508	Nominal Roll [deg]
revision	2	Processing version of data
ontime	12476.758963317	Sum of GTIs [s]
livetime	12318.770728721	Livetime [s]
ontime0	12476.759003103	Sum of GTIs [s]
ontime1	12479.999953508	Sum of GTIs [s]
ontime2	12479.999953508	Sum of GTIs [s]
ontime3	12476.758963317	Sum of GTIs [s]
ontime6	12476.758983225	Sum of GTIs [s]
ontime7	12479.999953508	Sum of GTIs [s]
l2events	140853	Number of level 2 events



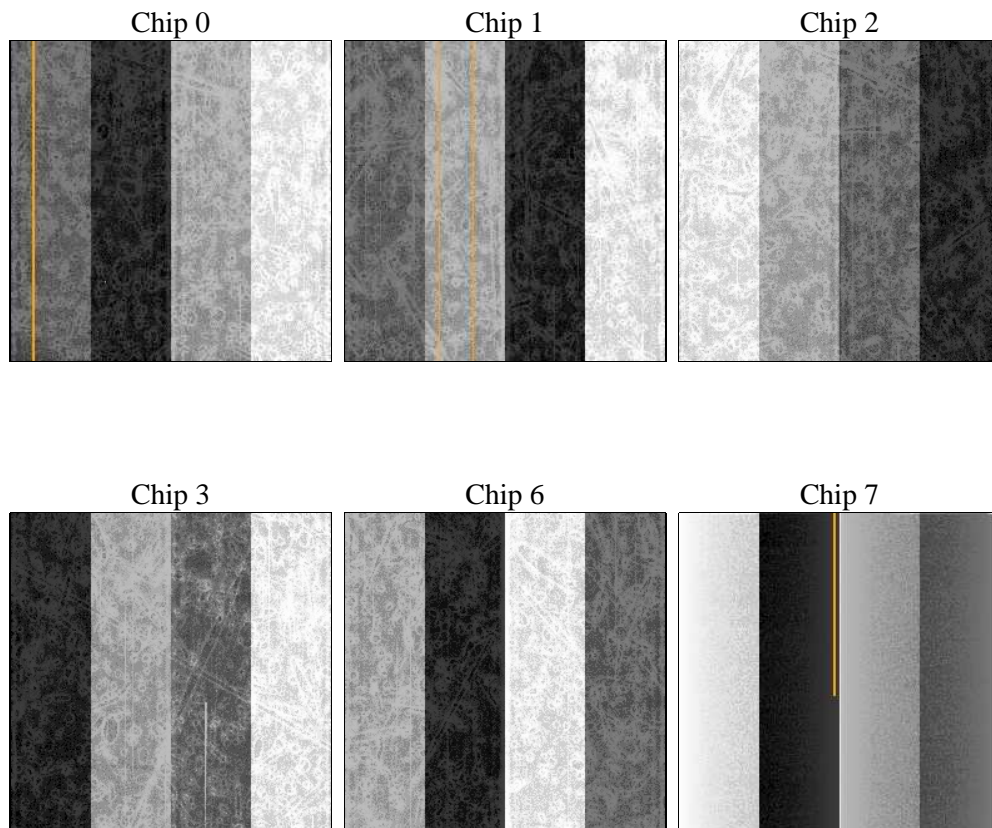
2 OBI

2.1 OBI

2.1.1 Images



2.1.2 Bias



2.1.3 Parameters

obi_num	0	Obi number	sched_exp_time	12377.499000	[s] Scheduled observation exposure time
ascdsver	8.4.3	Processing system revision	ontime	12476.758963317	Sum of GTIs [s]
caldsver	4.4.8	 	ontime0	12476.759003103	Sum of GTIs [s]
date	2012-03-24T05:45:06	Date and time of file creation	ontime1	12479.999953508	Sum of GTIs [s]
revision	2	Processing version of data	ontime2	12479.999953508	Sum of GTIs [s]
			ontime3	12476.758963317	Sum of GTIs [s]
			ontime6	12476.758983225	Sum of GTIs [s]
			ontime7	12479.999953508	Sum of GTIs [s]
			l1events	746486	Number of level 1 events

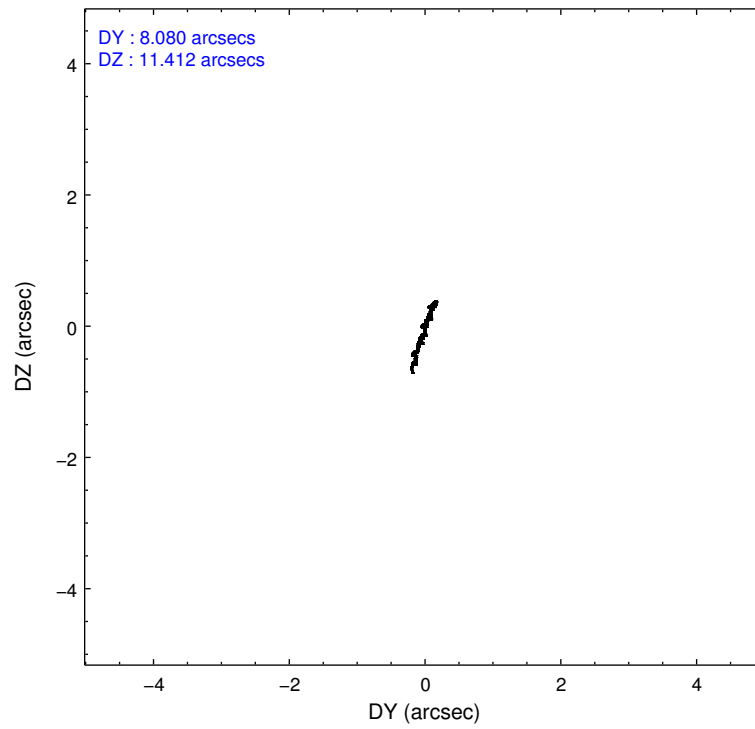
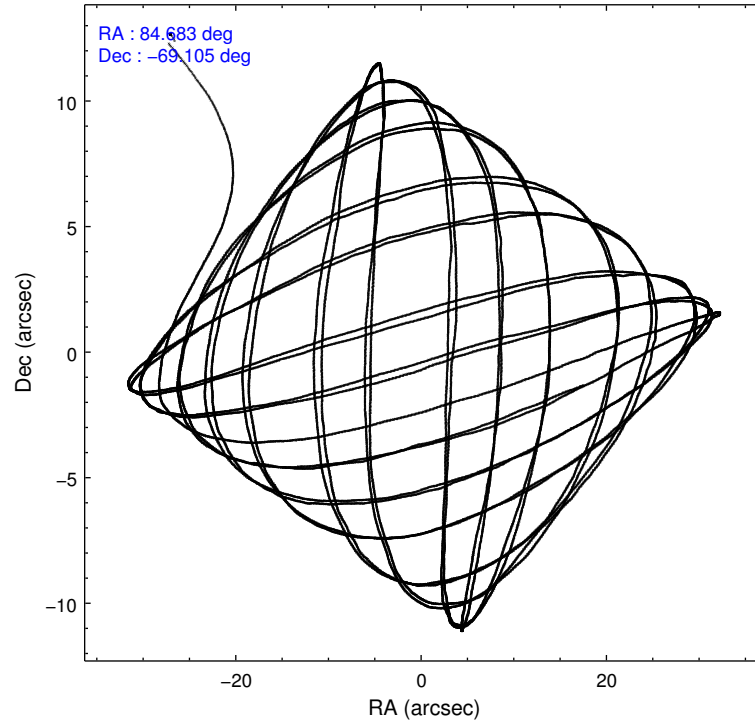
2.1.4 Events

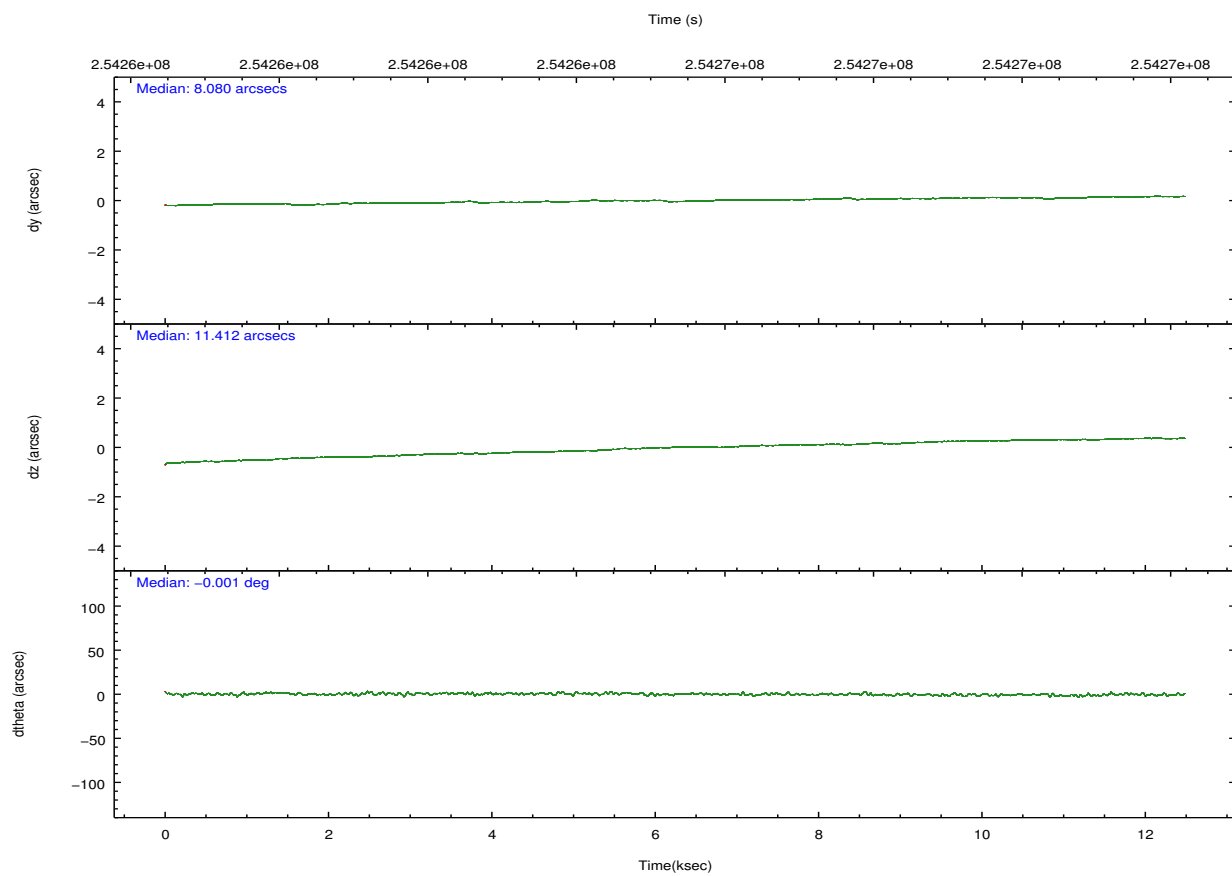
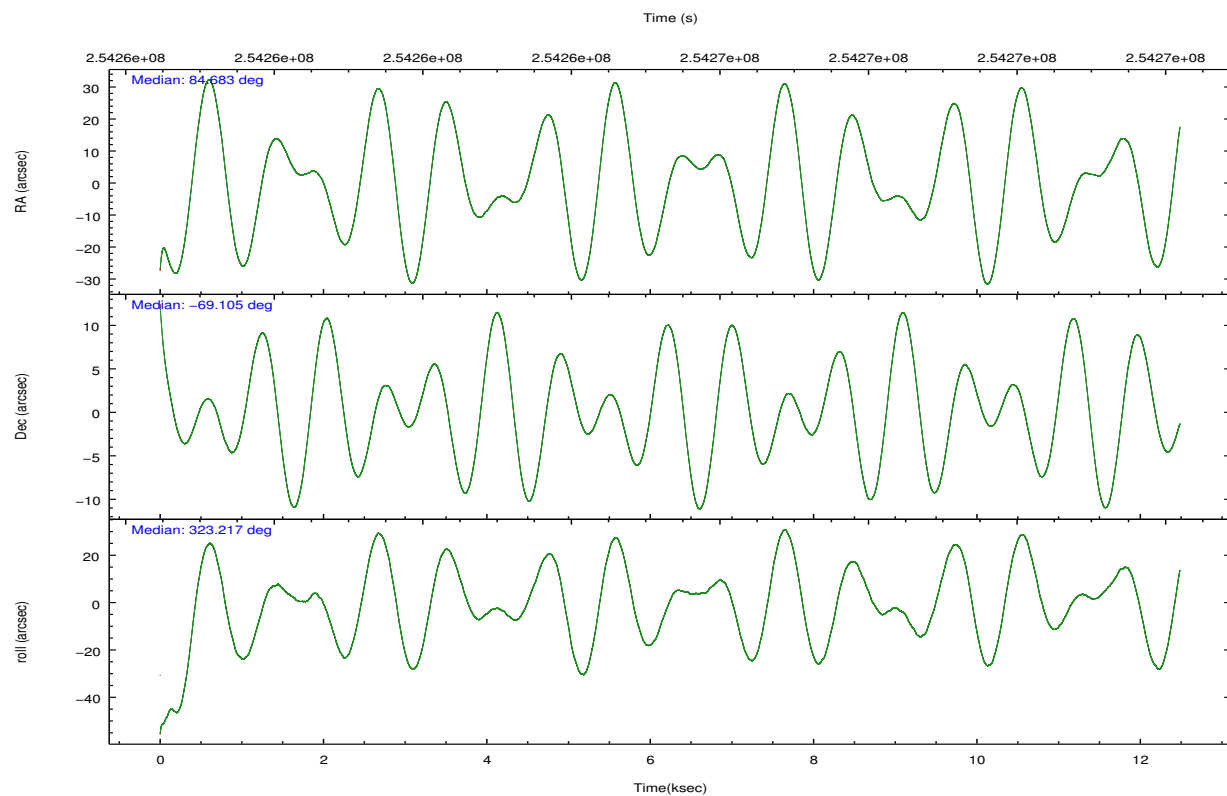
	ccd 0	ccd 1	ccd 2	ccd 3	ccd 6	ccd 7		ccd 0	ccd 1	ccd 2	ccd 3	ccd 6	ccd 7
level 1 events	109899	120528	118892	120557	119825	156785	grade 0 events	10331	16676	9787	12057	6888	6116
rejected events	92495	94483	102524	101483	105720	97344		9%	13%	8%	10%	5%	3%
rejected %	84%	78%	86%	84%	88%	62%	grade 1 events	77	142	106	121	72	162
								0%	0%	0%	0%	0%	0%
							grade 2 events	3327	4558	3111	3088	3150	13144
								3%	3%	2%	2%	2%	8%
							grade 3 events	1432	1730	1300	1440	1354	5795
								1%	1%	1%	1%	1%	3%
							grade 4 events	1358	1741	1362	1413	1320	5592
								1%	1%	1%	1%	1%	3%
							grade 5 events	4429	4814	4228	5132	5379	14590
								4%	3%	3%	4%	4%	9%
							grade 6 events	2491	3037	2219	2474	2832	35011
								2%	2%	1%	2%	2%	22%
							grade 7 events	86454	87830	96779	94832	98830	76375
								78%	72%	81%	78%	82%	48%

2.2 Compared Parameters

Parameter	Planned	Actual	Parameter	Planned	Actual
Instrument	ACIS	ACIS	Obspar format version number	7	7
Detector	ACIS-012367	ACIS-012367	Obspar file type	PREDICTED	ACTUAL
Grating	NONE	NONE	Obspar update status	NONE	UPDATED
Data mode	VFAINT	VFAINT	Number of optional ACIS chips dropped	0	0
Observation mode	POINTING	POINTING	On-chip summing requested	N	N
[deg] Pointing RA	84.606949	84.68310172379392	Subarray requested	NONE	NONE
[deg] Pointing Dec	-69.101414	-69.10456911026685	Alternating exposures requested	N	N
[deg] Pointing Roll	322.934869	323.2146972550797	[s] Primary exposure time	0.000000	3.2
[mm] SIM focus pos	-0.782348	-0.7809083437167272			
[mm] SIM defocus	0	0.001439871863259334			
[mm] SIM translation stage pos	-233.592463	-233.5874344608287			
[mm] SIM translation stage offset	0	-0.005018542100998502			
[s] Observation start time (MET)	254259197.184000	254257442.36171			
Observation start date	2006-01-21T19:32:12	2006-01-21T19:04:02			
[s] Observation end time (MET)	254271575.184000	254271810.29988			
Observation end date	2006-01-21T22:58:30	2006-01-21T23:03:30			
Read mode	TIMED	TIMED			

2.3 Aspect



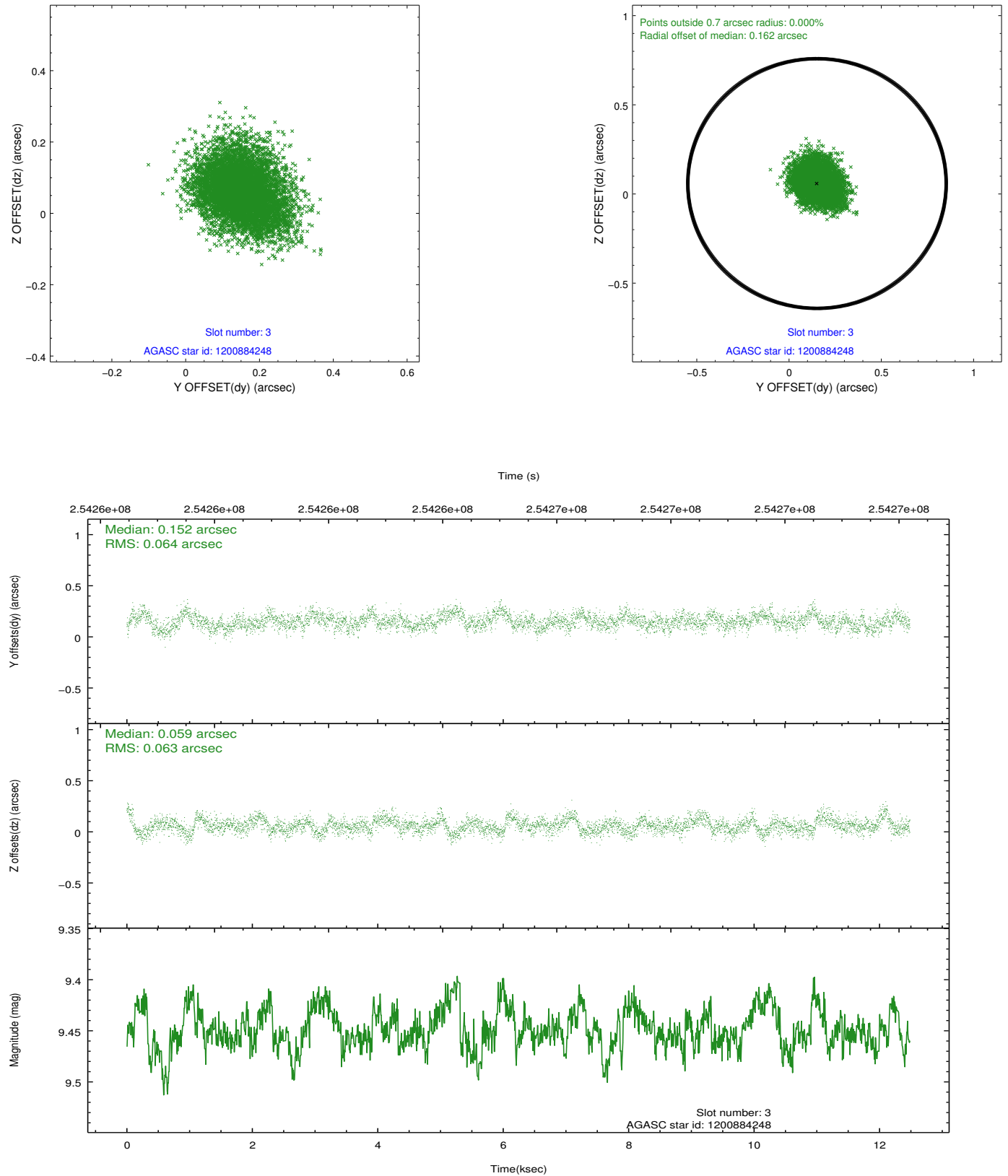


Slot Statistics

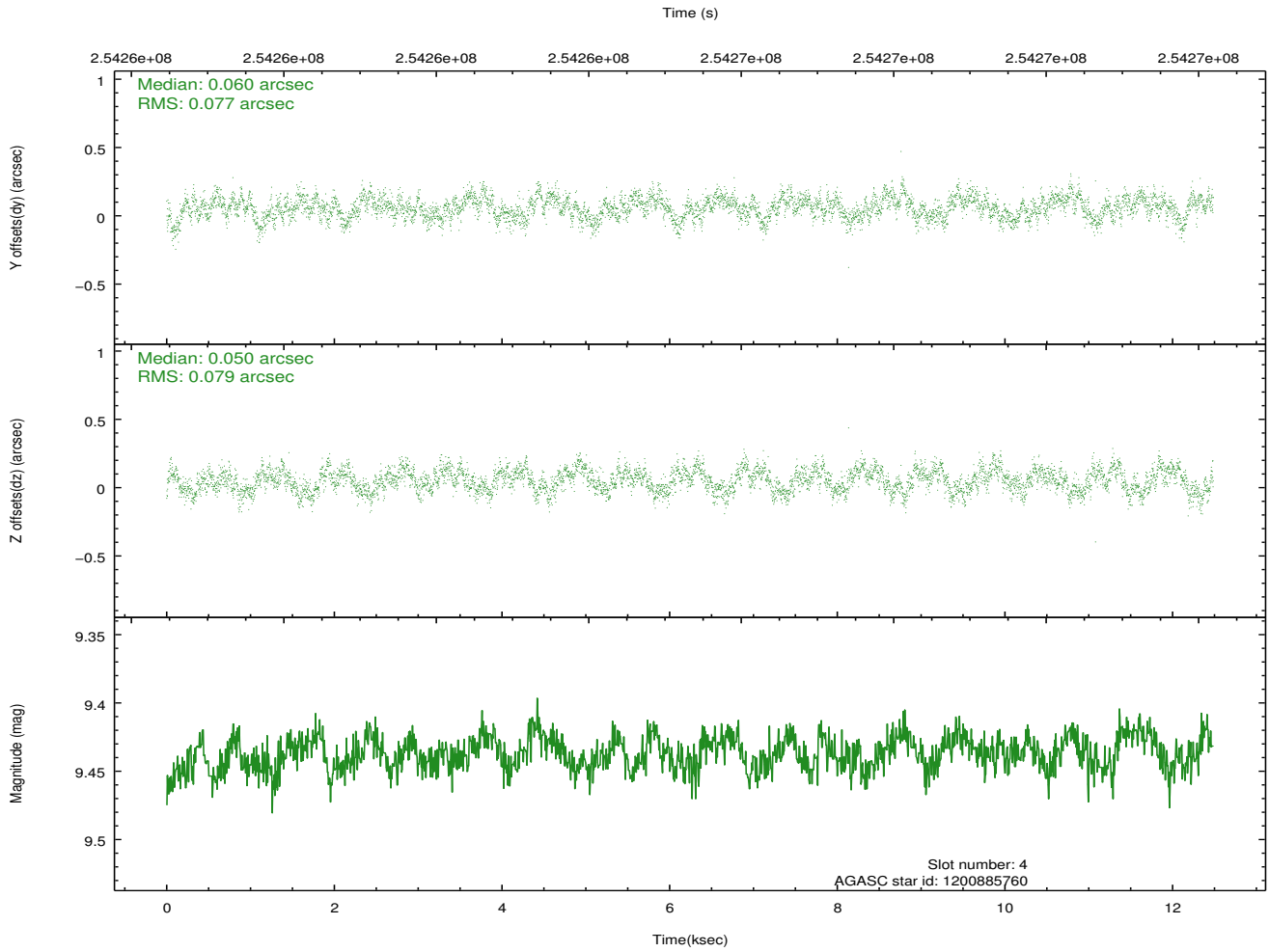
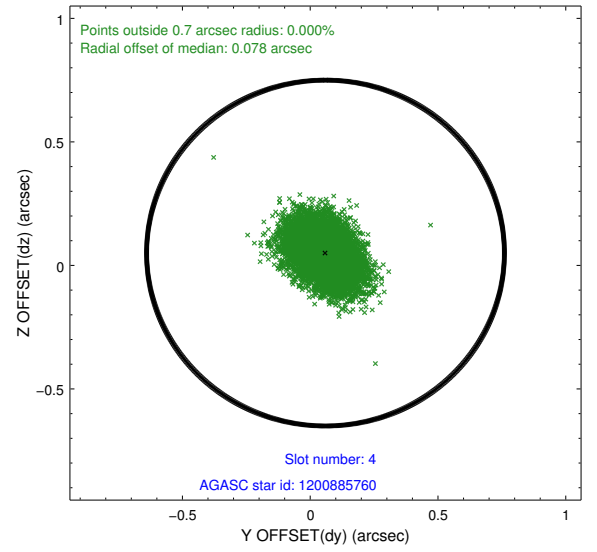
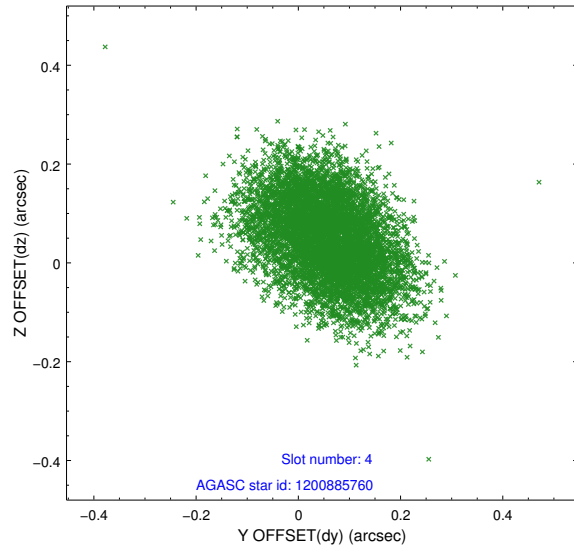
slot	status	id	mag	n_pts	med_dy	med_dz	dr1	dr2	ra	dec	mean_y	mean_z
0	FID	ACIS-I-1	7.24	3046	-0.049	0.008	0.013	0.024	0.000000	0.000000	931.51	-834.87
1	FID	ACIS-I-2	7.14	3044	-0.162	-0.069	0.011	0.016	0.000000	0.000000	-762.47	-841.55
2	FID	ACIS-I-4	7.17	3045	0.114	0.127	0.013	0.021	0.000000	0.000000	2151.42	1064.83
3	GUIDE	1200884248	9.45	6090	0.152	0.059	0.096	0.156	83.880915	-68.565170	-1922.04	960.86
4	GUIDE	1200885760	9.44	6086	0.060	0.050	0.118	0.188	83.723637	-68.777667	-1616.08	230.14
5	GUIDE	1201018312	9.61	6071	-0.102	0.075	0.103	0.164	86.298231	-69.115627	1780.32	1243.73
6	GUIDE	1201020040	8.59	6091	-0.114	-0.029	0.070	0.109	85.379163	-68.879396	321.62	1236.95
7	GUIDE	1201018384	9.08	6084	0.012	-0.161	0.103	0.171	85.801362	-68.593260	159.20	2393.96

2.4 Star Slots

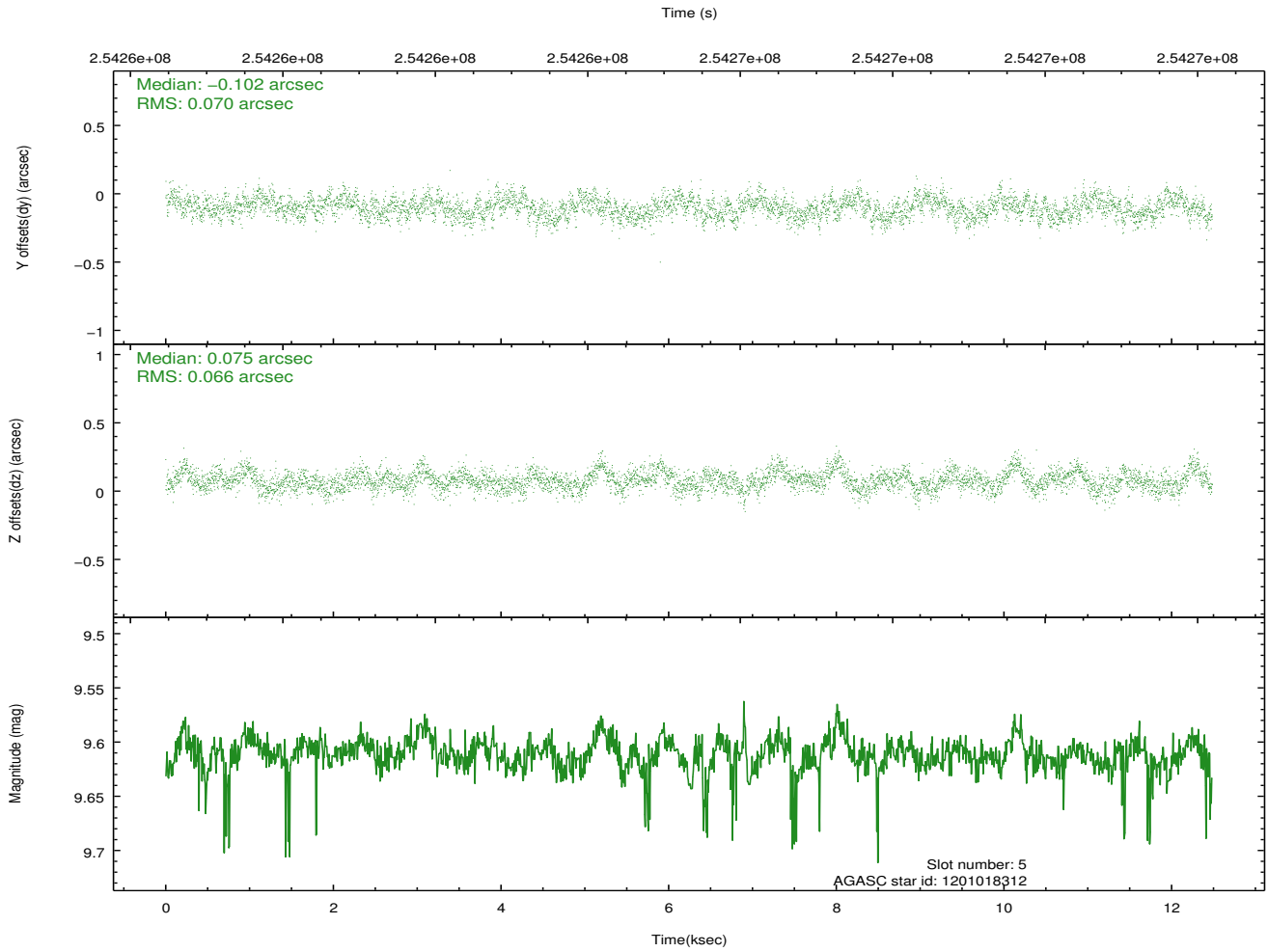
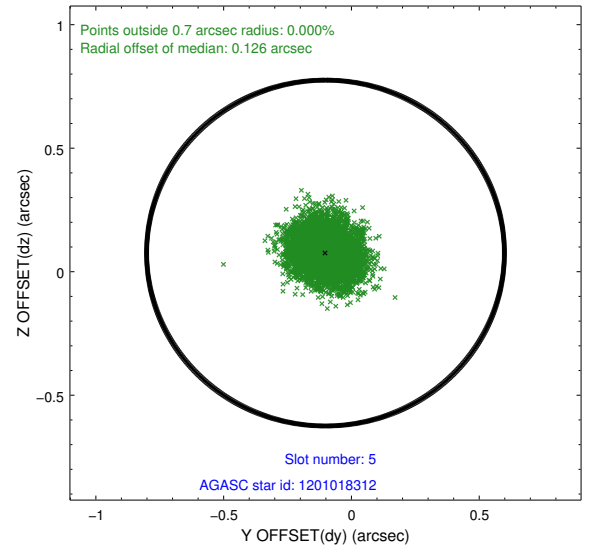
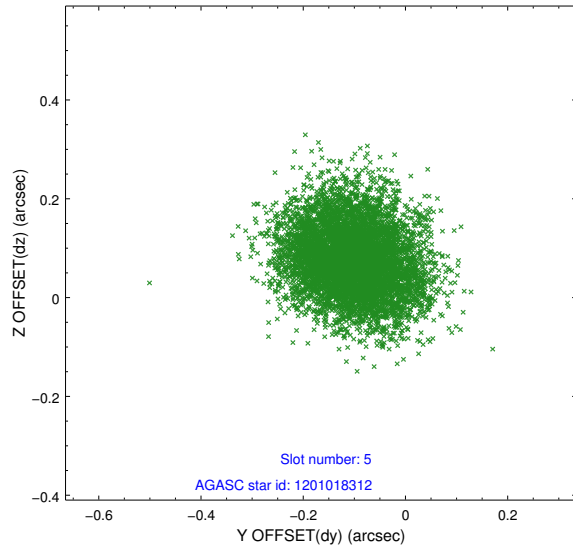
2.4.1 Slot 3



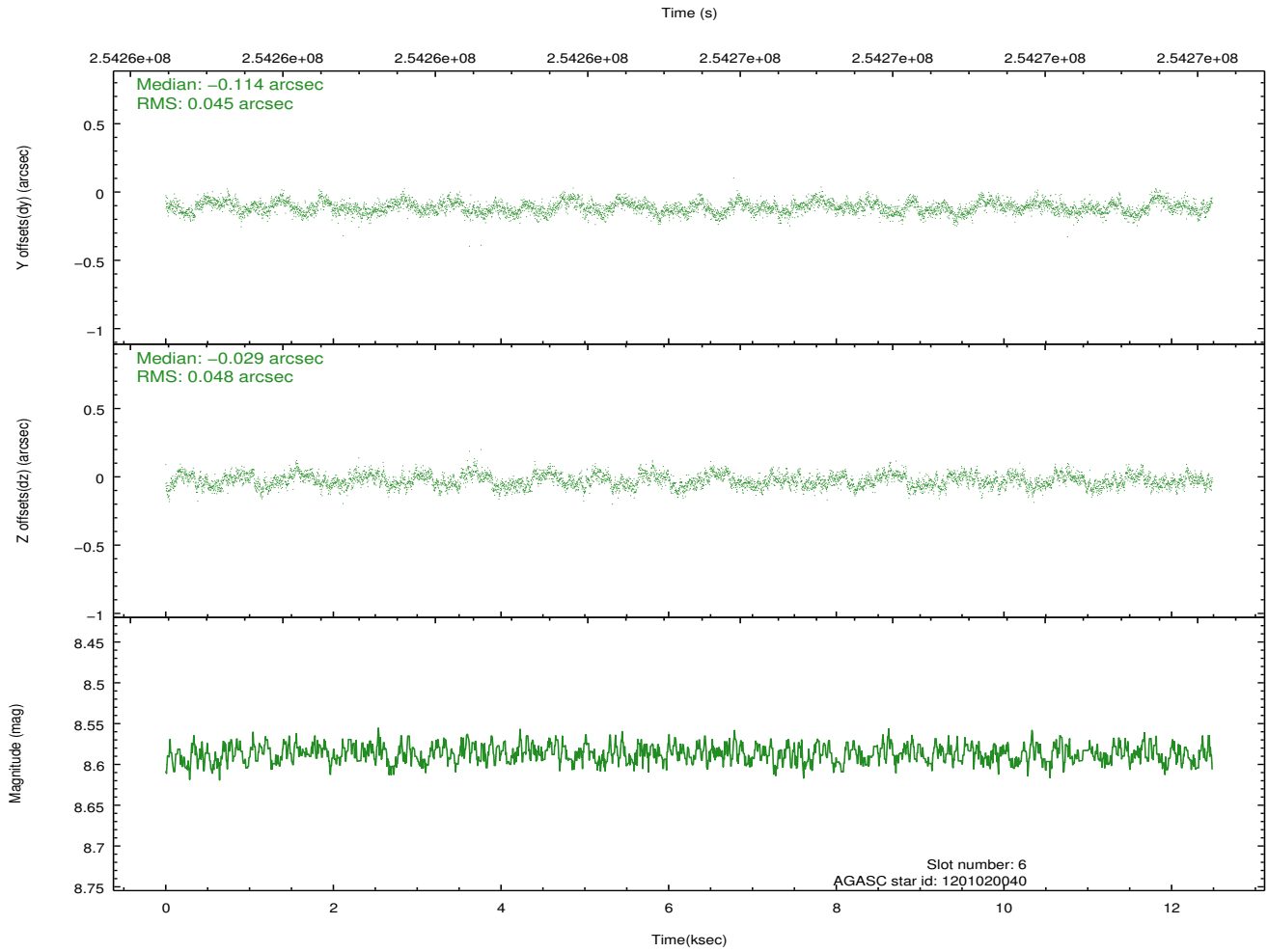
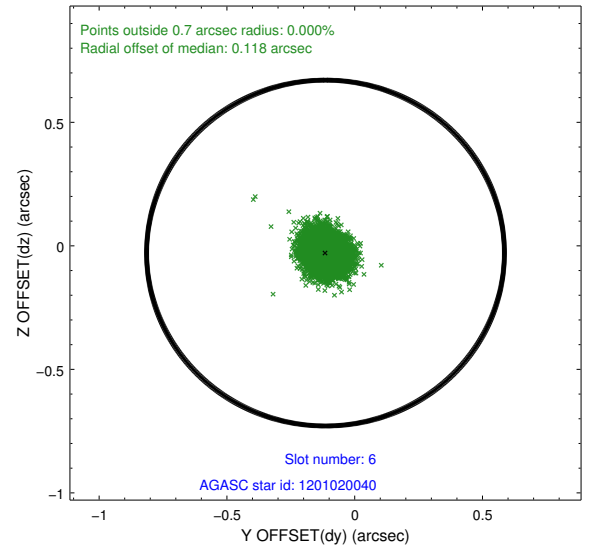
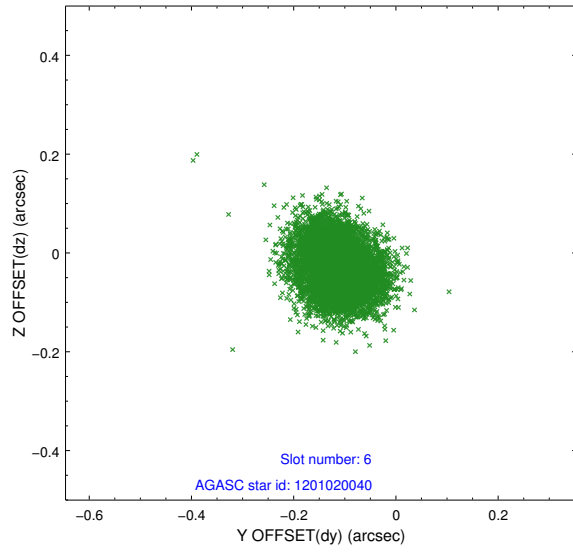
2.4.2 Slot 4



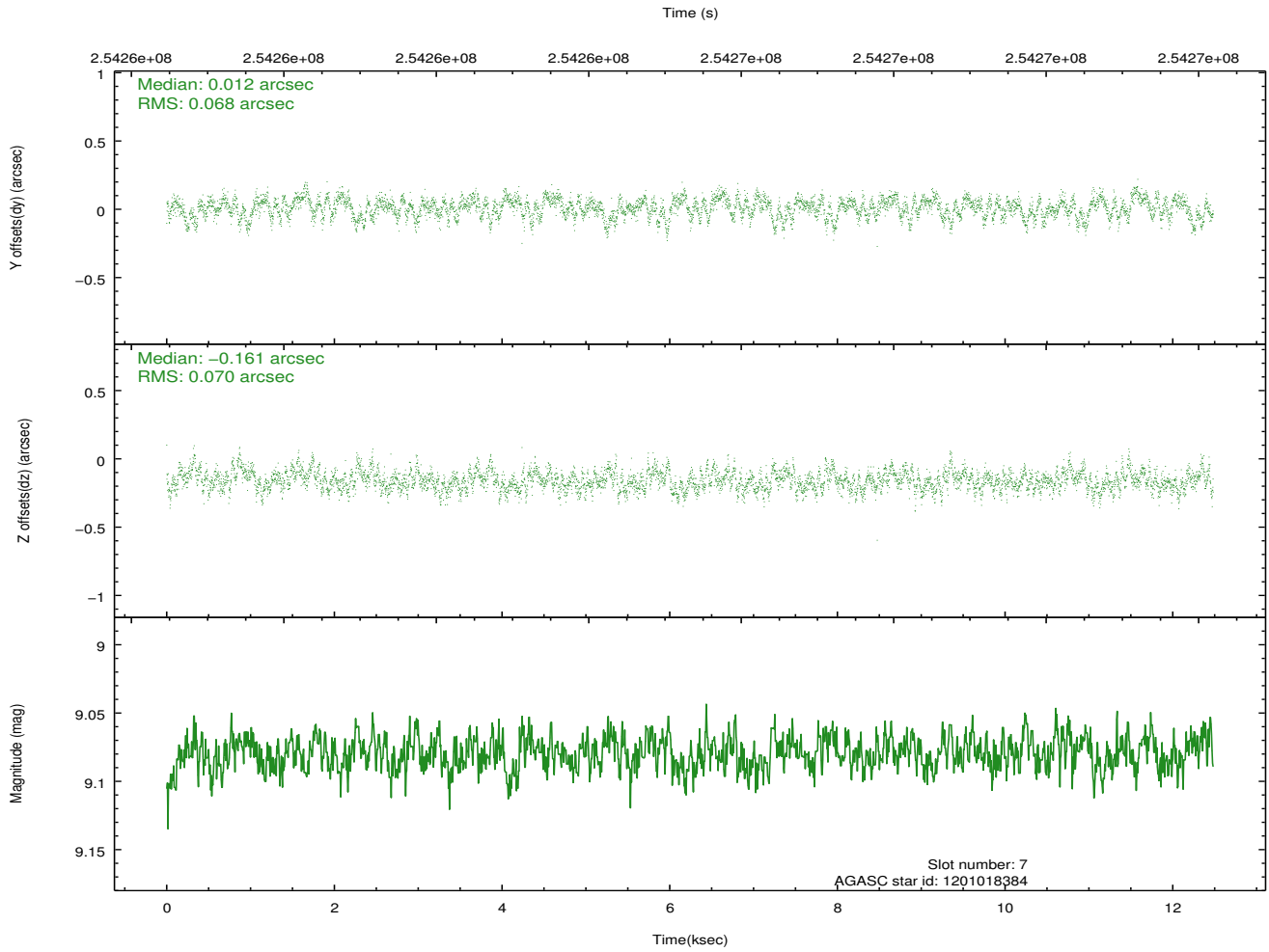
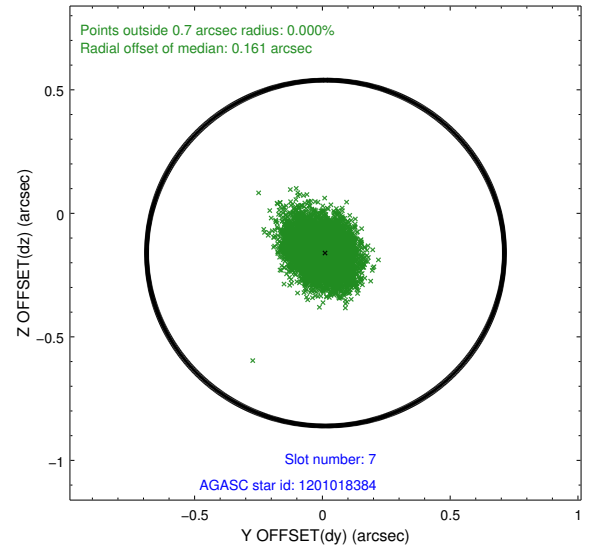
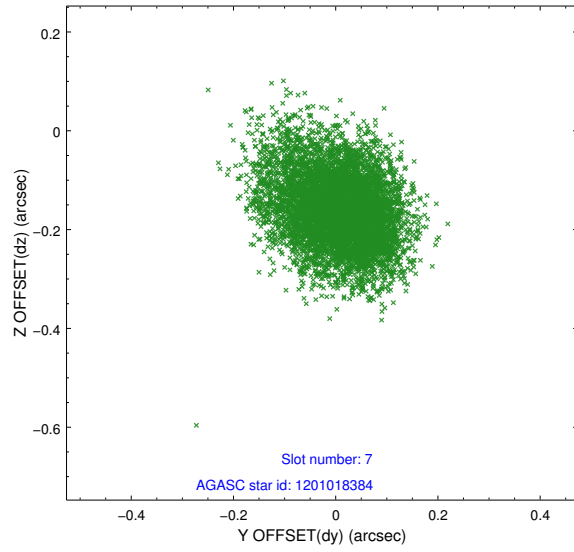
2.4.3 Slot 5



2.4.4 Slot 6

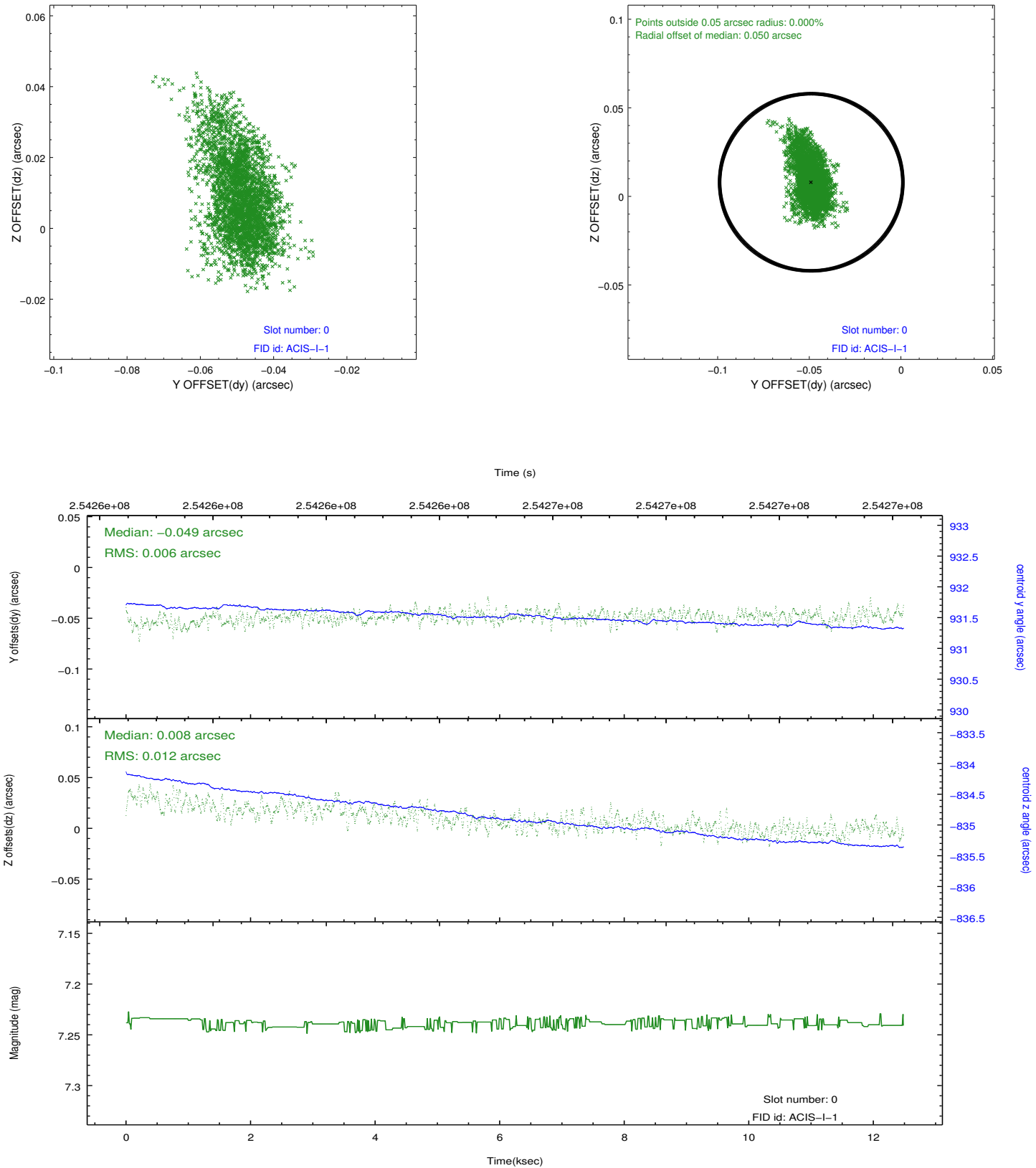


2.4.5 Slot 7

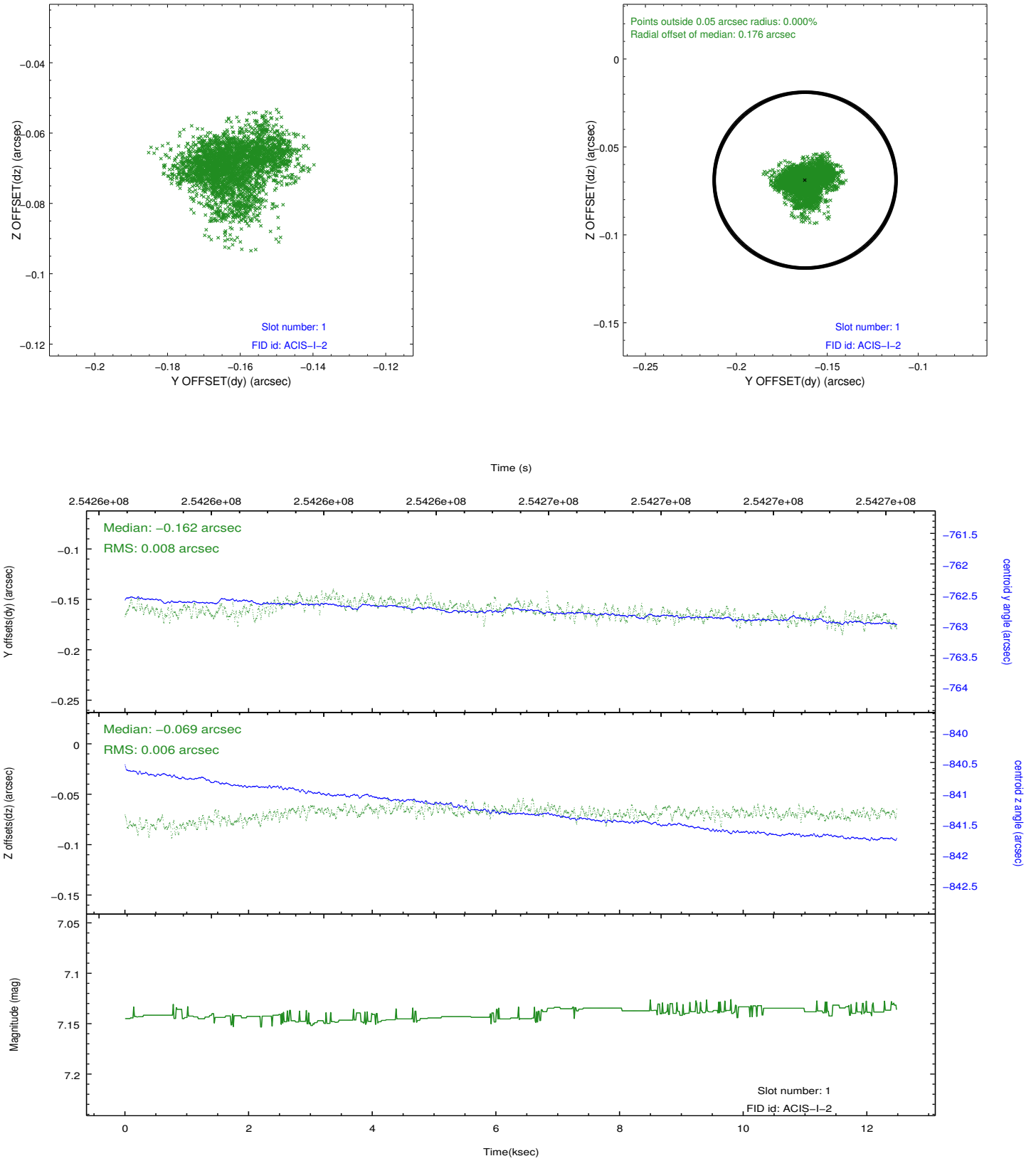


2.5 FID Slots

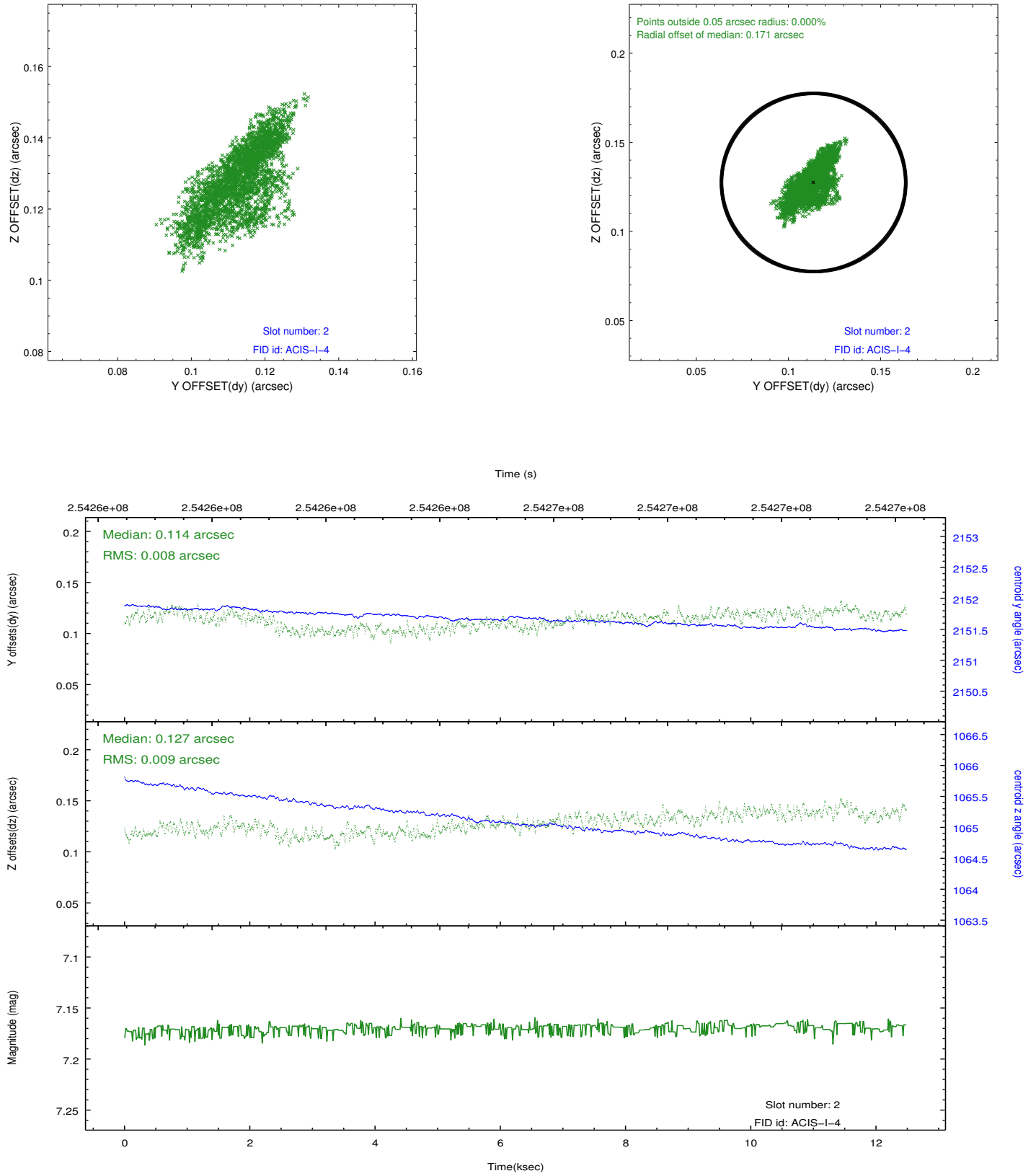
2.5.1 Slot 0



2.5.2 Slot 1



2.5.3 Slot 2



A Summary

A.1 Status

V&V Scientist	Jen Lauer
V&V Date (YYYY-MM-DD)	2012.03.26
V&V Edition	1
V&V Disposition and Status	OK
V&V Charge Time	12.4767589

A.2 Comments

Roll preference met.