

V&V Reference Report

L2 ASCDS Version : 8.4.3

Observation 59046 - L2 Version 2
Chandra X-Ray Center

L2 Processing Date : Mar 28 2012

Contents

1	Front	2
2	OBI	3
2.1	OBI	3
2.1.1	Images	3
2.1.2	Bias	3
2.1.3	Parameters	4
2.1.4	Events	4
2.2	Compared Parameters	5
2.3	Star Slots	6
2.4	FID Slots	6
A	Summary	7
A.1	Status	7
A.2	Comments	7

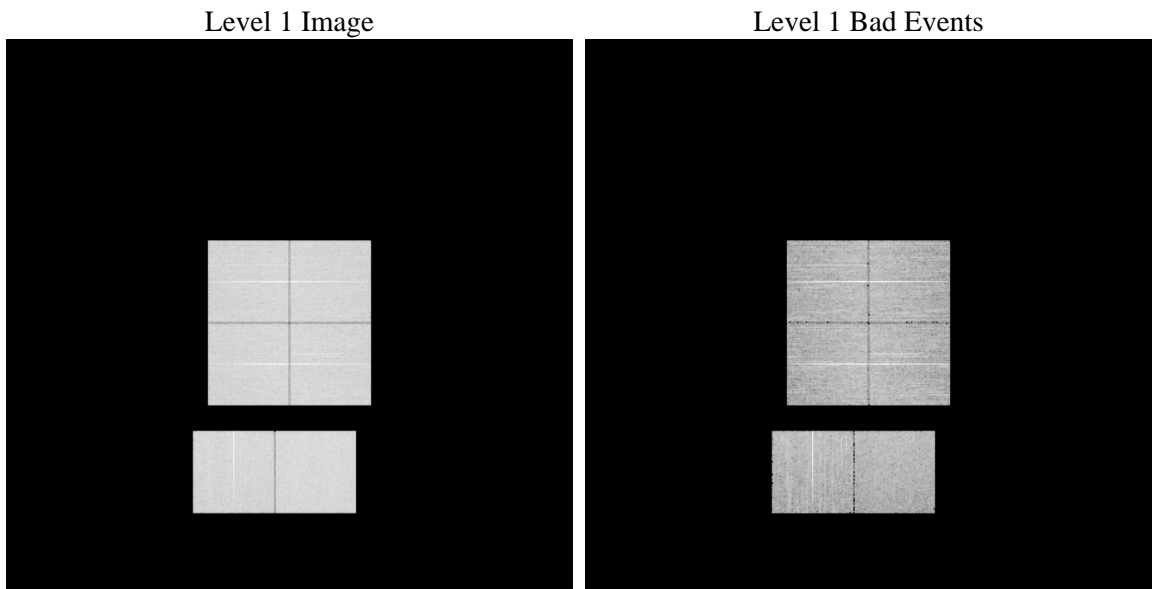
1 Front

seq_num	 	Sequence number
obs_id	59046	Observation id
title	ACIS-012367 diagnostics	Proposal title
observer	CHANDRA engineering request/realtime commanding	Principal investig
object	 	Source name
dtcycle	0	
cycle	P	events from which exps? Prim/Second/Both
ra_targ	0.0	Observer's specified target RA [deg]
dec_targ	0.0	Observer's specified target Dec [deg]
ra_nom	211.49313293339	Nominal RA [deg]
dec_nom	-5.974411763692	Nominal Dec [deg]
roll_nom	81.870352591692	Nominal Roll [deg]
revision	2	Processing version of data
ontime	8252.7999692559	Sum of GTIs [s]
livetime	8148.2980468057	Livetime [s]
ontime0	8252.7999692559	Sum of GTIs [s]
ontime1	8252.7999692559	Sum of GTIs [s]
ontime2	8252.7999692559	Sum of GTIs [s]
ontime3	8252.7999692559	Sum of GTIs [s]
ontime6	8252.7999692559	Sum of GTIs [s]
ontime7	8252.7999692559	Sum of GTIs [s]
l2events	954831	Number of level 2 events

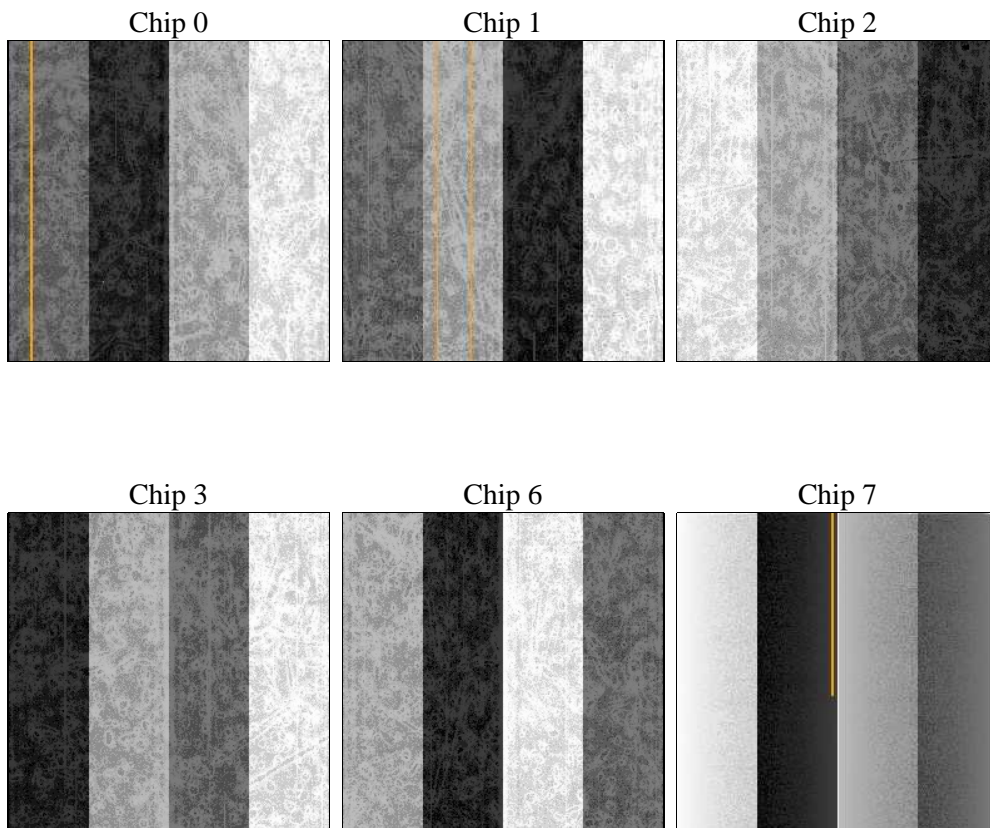
2 OBI

2.1 OBI

2.1.1 Images



2.1.2 Bias



2.1.3 Parameters

obi_num	1	Obi number	sched_exp_time	0.0	[s] Scheduled observation exposure time
ascdsver	8.4.3	Processing system revision	ontime	8252.7999692559	Sum of GTIs [s]
caldsver	4.4.8	 	ontime0	8252.7999692559	Sum of GTIs [s]
date	2012-03-28T23:46:09	Date and time of file creation	ontime1	8252.7999692559	Sum of GTIs [s]
revision	2	Processing version of data	ontime2	8252.7999692559	Sum of GTIs [s]
			ontime3	8252.7999692559	Sum of GTIs [s]
			ontime6	8252.7999692559	Sum of GTIs [s]
			ontime7	8252.7999692559	Sum of GTIs [s]
			l1events	1406551	Number of level 1 events

2.1.4 Events

	ccd 0	ccd 1	ccd 2	ccd 3	ccd 6	ccd 7		ccd 0	ccd 1	ccd 2	ccd 3	ccd 6	ccd 7
level 1 events	228446	227700	230346	233369	235347	251343	grade 0 events	87545	87552	90067	90976	90260	43385
rejected events	68638	66250	68857	70386	67612	59271		38%	38%	39%	38%	38%	17%
rejected %	30%	29%	29%	30%	28%	23%	grade 1 events	545	471	615	655	493	163
								0%	0%	0%	0%	0%	0%
							grade 2 events	27964	29021	27535	28112	29077	42049
								12%	12%	11%	12%	12%	16%
							grade 3 events	10618	10518	10603	10701	10716	18713
								4%	4%	4%	4%	4%	7%
							grade 4 events	10528	10642	10734	10813	10598	18963
								4%	4%	4%	4%	4%	7%
							grade 5 events	3826	3967	3685	4227	4118	10081
								1%	1%	1%	1%	1%	4%
							grade 6 events	23573	24152	22994	22820	27520	69447
								10%	10%	9%	9%	11%	27%
							grade 7 events	63847	61377	64113	65065	62565	48542
								27%	26%	27%	27%	26%	19%

2.2 Compared Parameters

Parameter	Planned	Actual	Parameter	Planned	Actual
Instrument	ACIS	ACIS	Obspar format version number	7	7
Detector	ACIS-012367	ACIS-012367	Obspar file type	PREDICTED	ACTUAL
Grating	NONE	NONE	Obspar update status	NONE	UPDATED
Data mode	FAINT	FAINT	On-chip summing requested	N	N
Observation mode	SECONDARY	SECONDARY	Subarray requested	NONE	NONE
[deg] Pointing RA	0	211.4931329333907	Alternating exposures requested	N	N
[deg] Pointing Dec	0	-5.974411763691966	[s] Primary exposure time	3.2	3.2
[deg] Pointing Roll	0.0	81.87035259169247			
[mm] SIM focus pos	-0.782348	-0.6828225247311905			
[mm] SIM defocus	0	0.8505141146731063			
[mm] SIM translation stage pos	-233.592463	250.466033080201			
[mm] SIM translation stage offset	0	-0.01005468664627074			
[s] Observation start time (MET)	259566505.958341	259566504.93335			
Observation start date	2006-03-24T05:48:26	2006-03-24T05:48:24			
[s] Observation end time (MET)	259589609.459416	259589608.43442			
Observation end date	2006-03-24T12:13:29	2006-03-24T12:13:28			
Read mode	TIMED	TIMED			

2.3 Star Slots

2.4 FID Slots

A Summary

A.1 Status

V&V Scientist	Jen Lauer
V&V Date (YYYY-MM-DD)	2012.03.30
V&V Edition	1
V&V Disposition and Status	OK
V&V Charge Time	8.2527999692559

A.2 Comments