

V&V Reference Report

L2 ASCDS Version : 8.4.4

Observation 57456 - L2 Version 2
Chandra X-Ray Center

L2 Processing Date : May 26 2012

Contents

1	Front	2
2	OBI	3
2.1	OBI	3
2.1.1	Images	3
2.1.2	Bias	3
2.1.3	Parameters	4
2.1.4	Events	4
2.2	Compared Parameters	5
2.3	Star Slots	6
2.4	FID Slots	6
A	Summary	7
A.1	Status	7
A.2	Comments	7

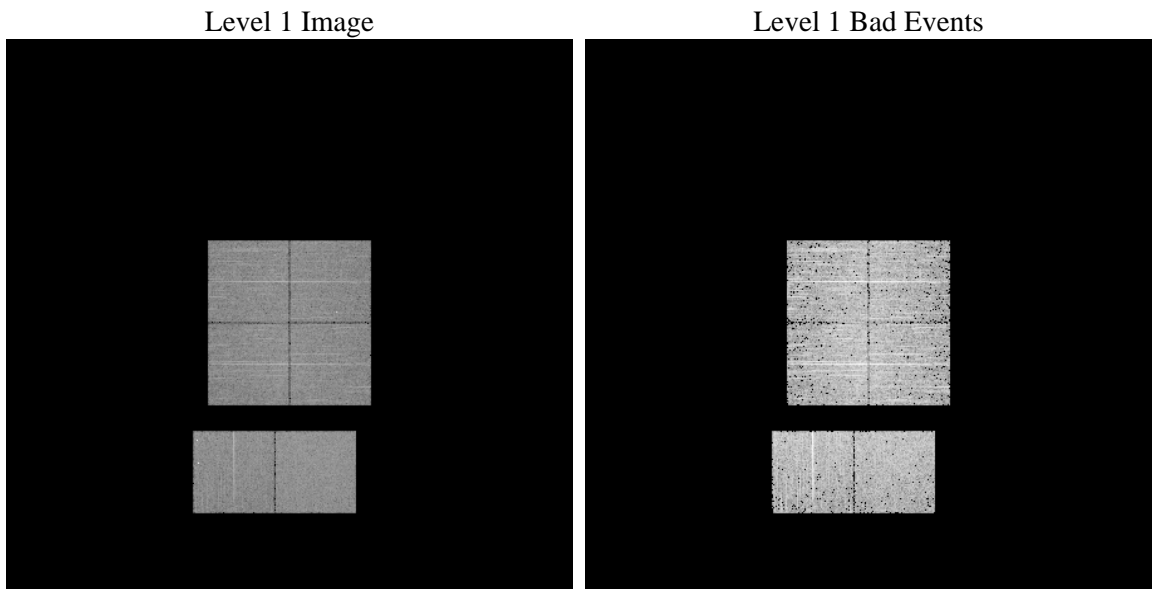
1 Front

seq_num	 	Sequence number
obs_id	57456	Observation id
title	ACIS-012367 diagnostics	Proposal title
observer	CHANDRA engineering request/realtime commanding	Principal investig
object	 	Source name
dtcycle	0	
cycle	P	events from which exps? Prim/Second/Both
ra_targ	0.0	Observer's specified target RA [deg]
dec_targ	0.0	Observer's specified target Dec [deg]
ra_nom	69.982019502207	Nominal RA [deg]
dec_nom	46.975928158353	Nominal Dec [deg]
roll_nom	200.97302908347	Nominal Roll [deg]
revision	2	Processing version of data
ontime	2793.5878687501	Sum of GTIs [s]
livetime	2758.2137770593	Livetime [s]
ontime0	2793.6288987994	Sum of GTIs [s]
ontime1	2793.6699487567	Sum of GTIs [s]
ontime2	2796.7999896407	Sum of GTIs [s]
ontime3	2793.5468287468	Sum of GTIs [s]
ontime6	2796.7999896407	Sum of GTIs [s]
ontime7	2793.5878687501	Sum of GTIs [s]
l2events	199574	Number of level 2 events

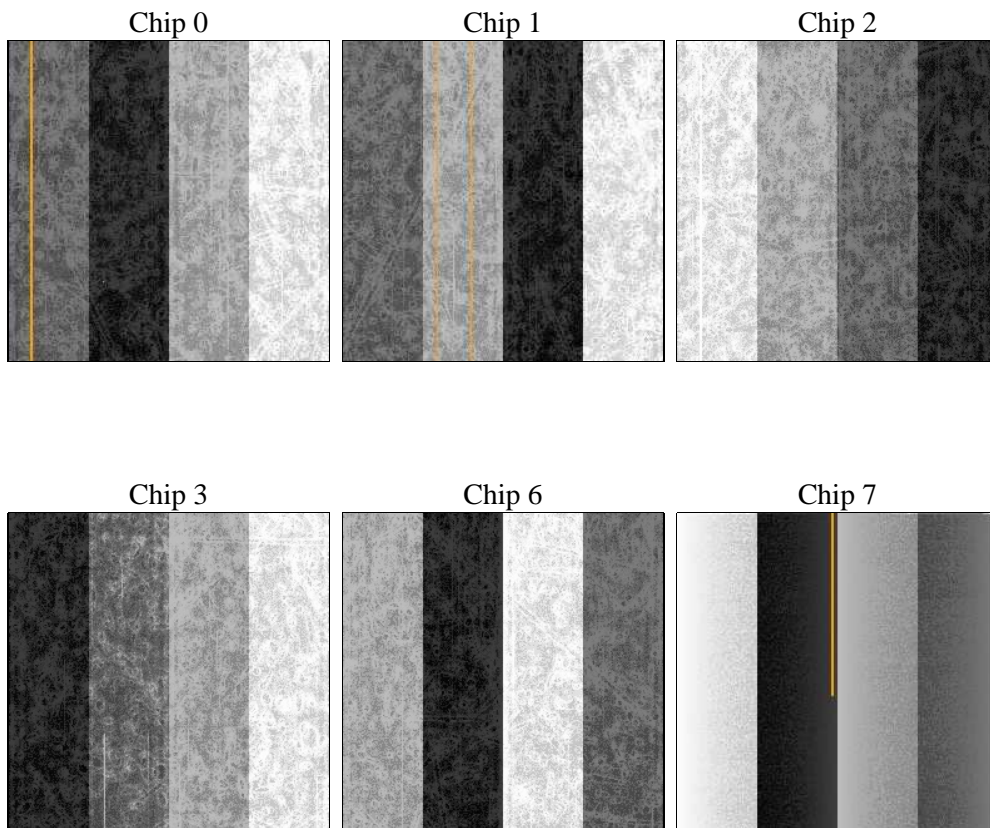
2 OBI

2.1 OBI

2.1.1 Images



2.1.2 Bias



2.1.3 Parameters

obi_num	0	Obi number	sched_exp_time	0.0	[s] Scheduled observation exposure time
ascdsver	8.4.4	Processing system revision	ontime	2793.5878687501	Sum of GTIs [s]
caldsver	4.4.9	 	ontime0	2793.6288987994	Sum of GTIs [s]
date	2012-05-26T05:08:17	Date and time of file creation	ontime1	2793.6699487567	Sum of GTIs [s]
revision	2	Processing version of data	ontime2	2796.7999896407	Sum of GTIs [s]
			ontime3	2793.5468287468	Sum of GTIs [s]
			ontime6	2796.7999896407	Sum of GTIs [s]
			ontime7	2793.5878687501	Sum of GTIs [s]
			l1events	366319	Number of level 1 events

2.1.4 Events

	ccd 0	ccd 1	ccd 2	ccd 3	ccd 6	ccd 7		ccd 0	ccd 1	ccd 2	ccd 3	ccd 6	ccd 7
level 1 events	59040	56787	60500	59728	61960	68304	grade 0 events	17444	16949	17649	18128	19285	8858
rejected events	26011	23652	27902	26435	26141	23618		29%	29%	29%	30%	31%	12%
rejected %	44%	41%	46%	44%	42%	34%	grade 1 events	114	114	134	145	114	46
								0%	0%	0%	0%	0%	0%
							grade 2 events	5927	6541	5459	5800	6094	9751
								10%	11%	9%	9%	9%	14%
							grade 3 events	2116	2125	2266	2210	2194	4090
								3%	3%	3%	3%	3%	5%
							grade 4 events	2138	2148	2213	2193	2153	4050
								3%	3%	3%	3%	3%	5%
							grade 5 events	1403	1337	1313	1534	1539	3743
								2%	2%	2%	2%	2%	5%
							grade 6 events	5404	5372	5011	4962	6093	17937
								9%	9%	8%	8%	9%	26%
							grade 7 events	24494	22201	26455	24756	24488	19829
								41%	39%	43%	41%	39%	29%

2.2 Compared Parameters

Parameter	Planned	Actual	Parameter	Planned	Actual
Instrument	ACIS	ACIS	Obspar format version number	7	7
Detector	ACIS-012367	ACIS-012367	Obspar file type	PREDICTED	ACTUAL
Grating	NONE	NONE	Obspar update status	NONE	UPDATED
Data mode	FAINT	FAINT	Number of optional ACIS chips dropped	0	0
Observation mode	SECONDARY	SECONDARY	On-chip summing requested	N	N
[deg] Pointing RA	0	69.98201950220745	Subarray requested	NONE	NONE
[deg] Pointing Dec	0	46.97592815835254	Alternating exposures requested	N	N
[deg] Pointing Roll	0.0	200.9730290834725	[s] Primary exposure time	3.2	3.2
[mm] SIM focus pos	-1.429586	-0.6828225247311905			
[mm] SIM defocus	0.1037507710433287	0.8505141146731063			
[mm] SIM translation stage pos	250.455976	250.466033080201			
[mm] SIM translation stage offset	0	-0.01005468664627074			
[s] Observation start time (MET)	345435437.437641	345435436.41264			
Observation start date	2008-12-12T02:17:17	2008-12-12T02:17:16			
[s] Observation end time (MET)	345445215.938125	345445214.91312			
Observation end date	2008-12-12T05:00:16	2008-12-12T05:00:14			
Read mode	TIMED	TIMED			

2.3 Star Slots

2.4 FID Slots

A Summary

A.1 Status

V&V Scientist	Jen Lauer
V&V Date (YYYY-MM-DD)	2012.06.01
V&V Edition	1
V&V Disposition and Status	OK
V&V Charge Time	2.7935878687501

A.2 Comments