

# V&V Reference Report

## L2 ASCDS Version : 8.5.1

Observation 5726 - L2 Version 3  
Chandra X-Ray Center

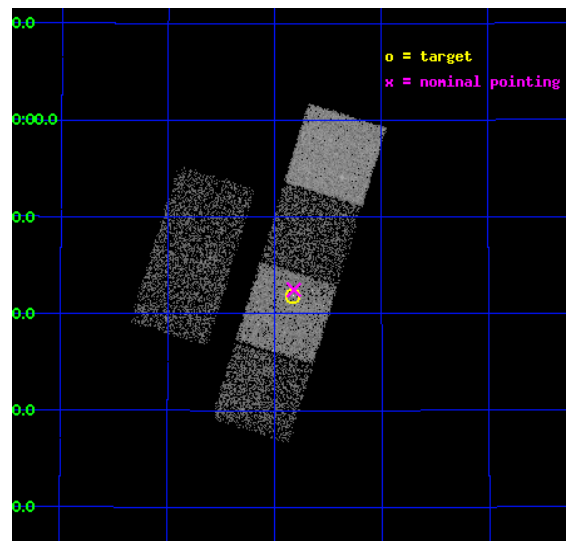
L2 Processing Date : Dec 15 2012

## Contents

<b>1</b>	<b>Front</b>	<b>2</b>
<b>2</b>	<b>OBI</b>	<b>3</b>
2.1	OBI . . . . .	3
2.1.1	Images . . . . .	3
2.1.2	Bias . . . . .	3
2.1.3	Parameters . . . . .	4
2.1.4	Events . . . . .	4
2.2	Compared Parameters . . . . .	5
2.3	Aspect . . . . .	6
2.4	Star Slots . . . . .	9
2.4.1	Slot 3 . . . . .	9
2.4.2	Slot 4 . . . . .	10
2.4.3	Slot 5 . . . . .	11
2.4.4	Slot 6 . . . . .	12
2.4.5	Slot 7 . . . . .	13
2.5	FID Slots . . . . .	14
2.5.1	Slot 0 . . . . .	14
2.5.2	Slot 1 . . . . .	15
2.5.3	Slot 2 . . . . .	16
<b>A</b>	<b>Summary</b>	<b>17</b>
A.1	Status . . . . .	17
A.2	Comments . . . . .	17

# 1 Front

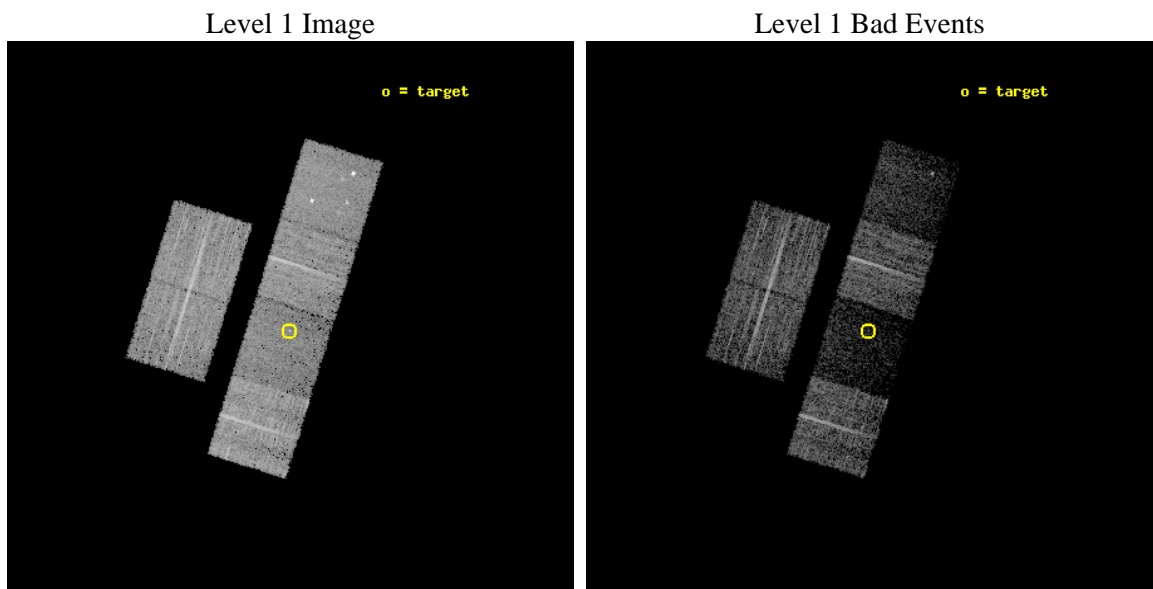
seq_num	701148	Sequence number
obs_id	5726	Observation id
title	What kind of Jets does Nature make? X-ray characterization of the FIRST Flat Spectrum Sample	Proposal title
observer	Dr. Giovanni Fossati	Principal investigator
object	FIRST J093949.6+414154	Source name
dtcycle	0	&#160
cycle	P	events from which exps? Prim/Second/Both
ra_targ	144.956667	Observer's specified target RA [deg]
dec_targ	41.698444	Observer's specified target Dec [deg]
ra_nom	144.95495244488	Nominal RA [deg]
dec_nom	41.708085411379	Nominal Dec [deg]
roll_nom	107.31518262247	Nominal Roll [deg]
revision	3	Processing version of data
ontime	7171.1999732852	Sum of GTIs [s]
livetime	7080.3939212452	Livetime [s]
ontime2	7171.1999732852	Sum of GTIs [s]
ontime3	7171.1999732852	Sum of GTIs [s]
ontime5	7171.1999732852	Sum of GTIs [s]
ontime6	7171.1999732852	Sum of GTIs [s]
ontime7	7171.1999732852	Sum of GTIs [s]
ontime8	7171.1999732852	Sum of GTIs [s]
l2events	38157	Number of level 2 events



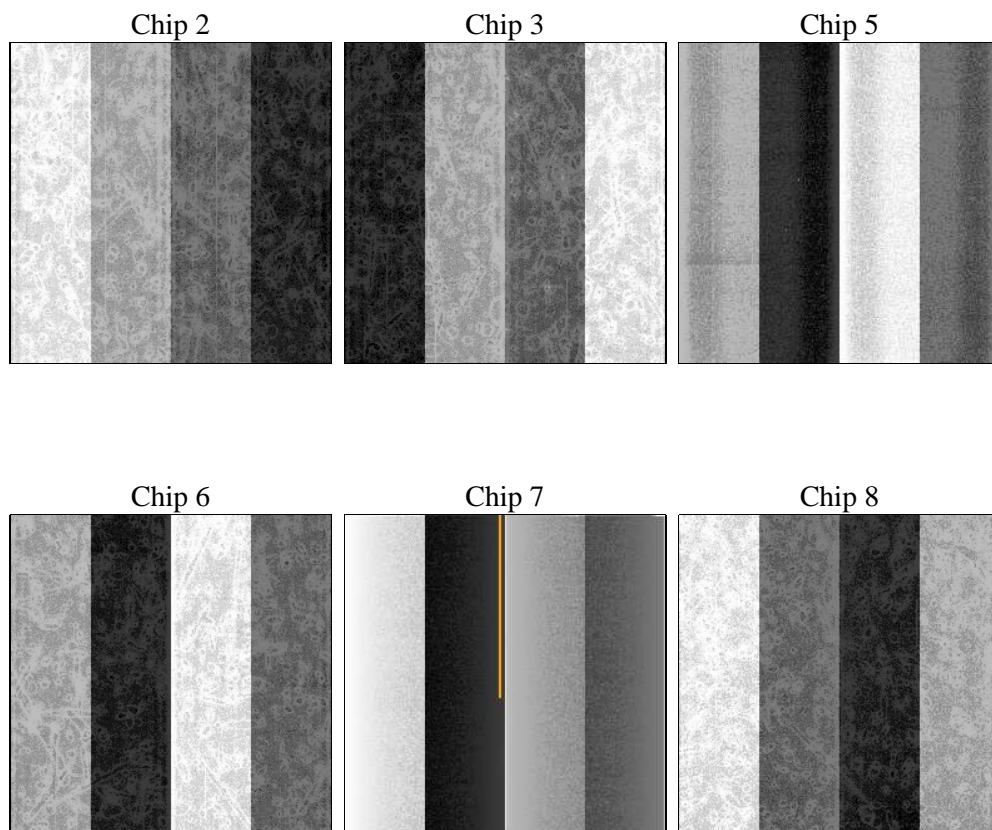
## 2 OBI

### 2.1 OBI

#### 2.1.1 Images



#### 2.1.2 Bias



### 2.1.3 Parameters

obi_num	0	Obi number	sched_exp_time	7000.000000	[s] Scheduled observation exposure time
ascdsver	8.5.1	Processing system revision	ontime	7171.1999732852	Sum of GTIs [s]
caldbver	4.5.5	&#160	ontime2	7171.1999732852	Sum of GTIs [s]
date	2012-12-15T20:48:34	Date and time of file creation	ontime3	7171.1999732852	Sum of GTIs [s]
revision	3	Processing version of data	ontime5	7171.1999732852	Sum of GTIs [s]
			ontime6	7171.1999732852	Sum of GTIs [s]
			ontime7	7171.1999732852	Sum of GTIs [s]
			ontime8	7171.1999732852	Sum of GTIs [s]
			l1events	246751	Number of level 1 events

### 2.1.4 Events

	ccd 2	ccd 3	ccd 5	ccd 6	ccd 7	ccd 8
level 1 events	46501	40986	40588	42959	25254	50463
rejected events	43514	38162	20241	39861	13385	40397
rejected %	93%	93%	49%	92%	53%	80%

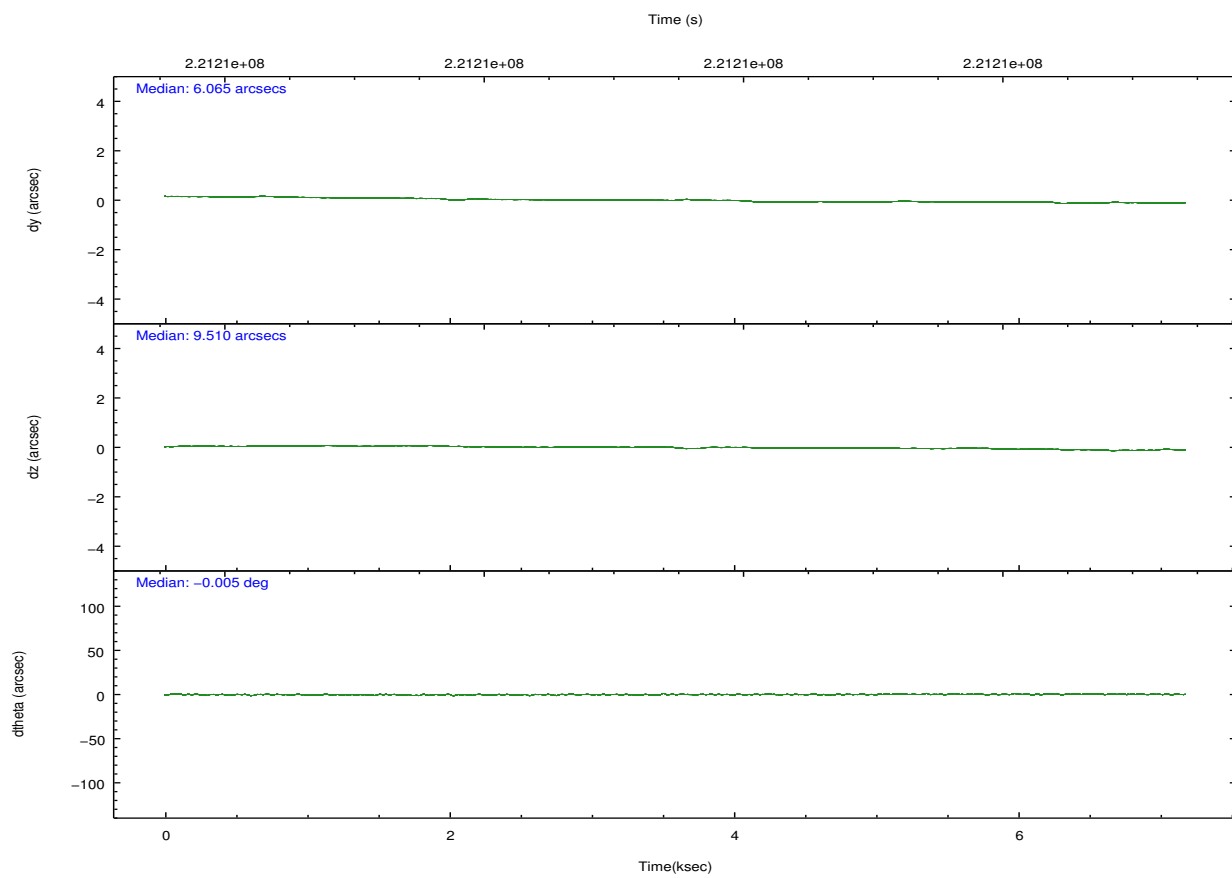
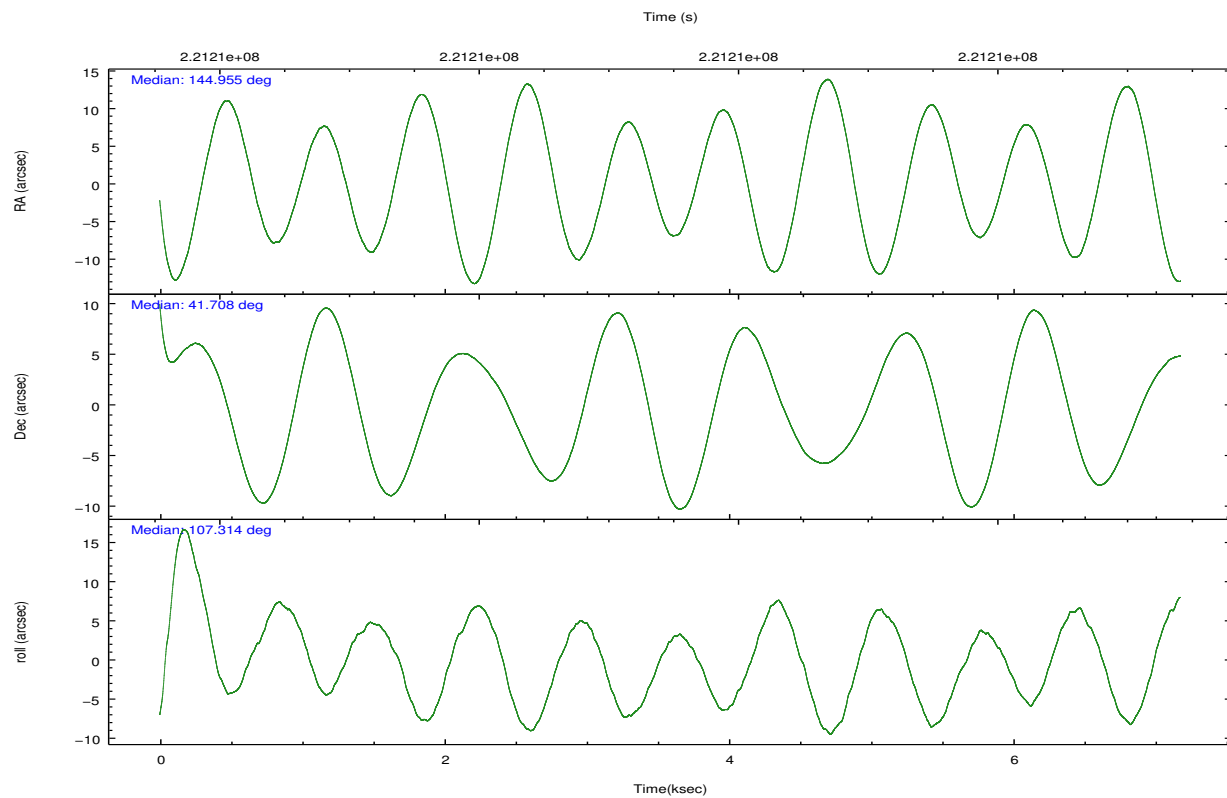
	ccd 2	ccd 3	ccd 5	ccd 6	ccd 7	ccd 8
grade 0 events	1444	1473	5011	1545	1940	3581
	3%	3%	12%	3%	7%	7%
grade 1 events	27	32	284	18	52	41
	0%	0%	0%	0%	0%	0%
grade 2 events	924	735	7904	860	3491	2909
	1%	1%	19%	2%	13%	5%
grade 3 events	386	411	1258	418	1529	1323
	0%	1%	3%	0%	6%	2%
grade 4 events	438	394	1226	414	1628	1274
	0%	0%	3%	0%	6%	2%
grade 5 events	696	867	3147	862	2626	1468
	1%	2%	7%	2%	10%	2%
grade 6 events	578	505	10120	639	6168	3389
	1%	1%	24%	1%	24%	6%
grade 7 events	42008	36569	11638	38203	7820	36478
	90%	89%	28%	88%	30%	72%



## 2.2 Compared Parameters

Parameter	Planned	Actual	Parameter	Planned	Actual
Instrument	ACIS	ACIS	Obspar format version number	7	7
Detector	ACIS-235678	ACIS-235678	Obspar file type	PREDICTED	ACTUAL
Grating	NONE	NONE	Obspar update status	NONE	UPDATED
Data mode	VFAINT	VFAINT	Number of optional ACIS chips dropped	0	0
Observation mode	POINTING	POINTING	On-chip summing requested	N	N
[deg] Pointing RA	144.982182	144.9549524448842	Subarray requested	NONE	NONE
[deg] Pointing Dec	41.689843	41.70808541137924	Alternating exposures requested	N	N
[deg] Pointing Roll	107.140454	107.3151826224719	[s] Primary exposure time	0.000000	3.2
[mm] SIM focus pos	-0.684267	-0.6828225247311905			
[mm] SIM defocus	0	0.001444936568705701			
[mm] SIM translation stage pos	-190.132523	-190.1400660498719			
[mm] SIM translation stage offset	0	0.00754346686406393			
[s] Observation start time (MET)	221208059.184000	221206102.64968			
Observation start date	2005-01-04T06:39:55	2005-01-04T06:08:22			
[s] Observation end time (MET)	221215059.184000	221215958.53763			
Observation end date	2005-01-04T08:36:35	2005-01-04T08:52:38			
Read mode	TIMED	TIMED			

## 2.3 Aspect

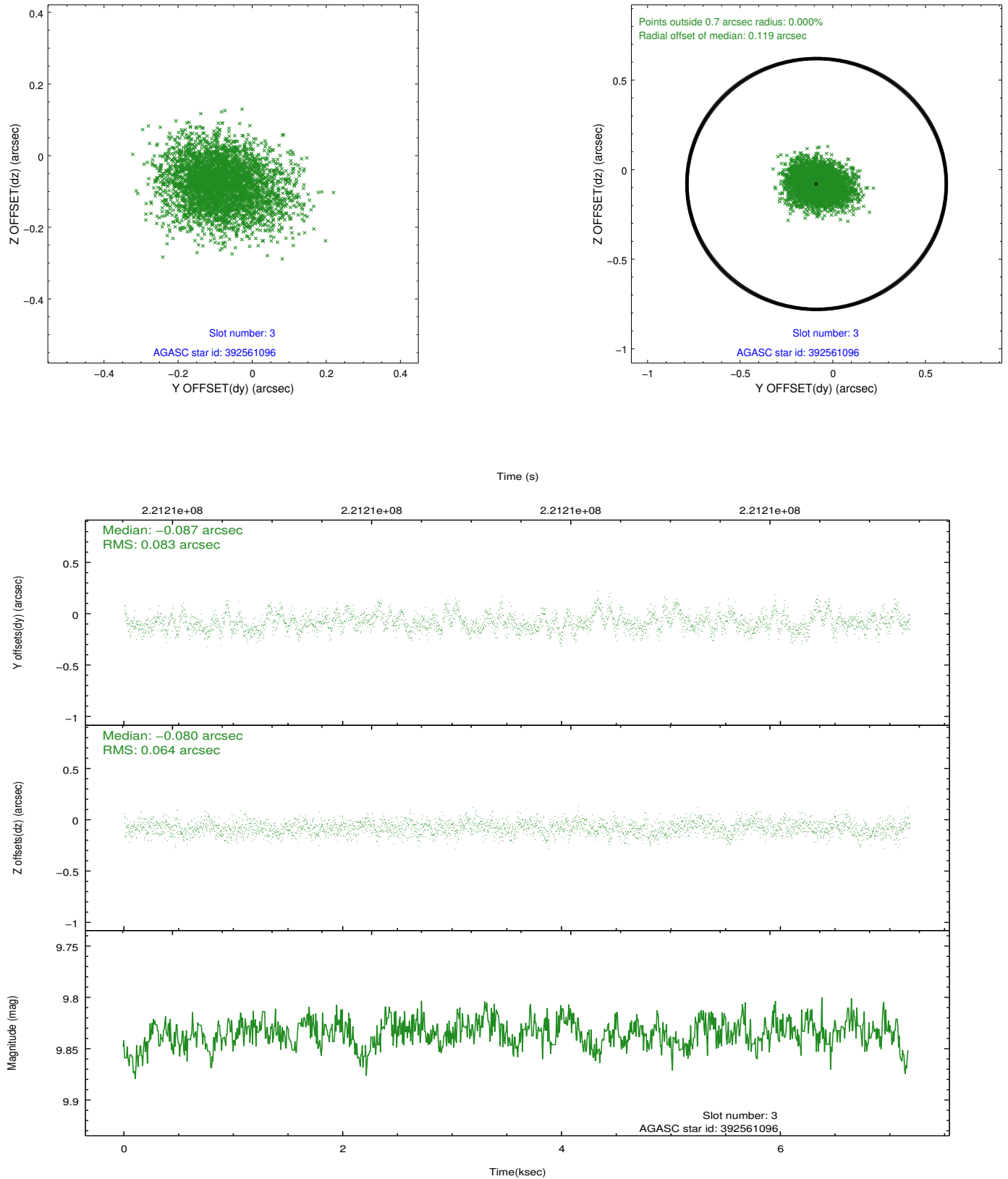


### Slot Statistics

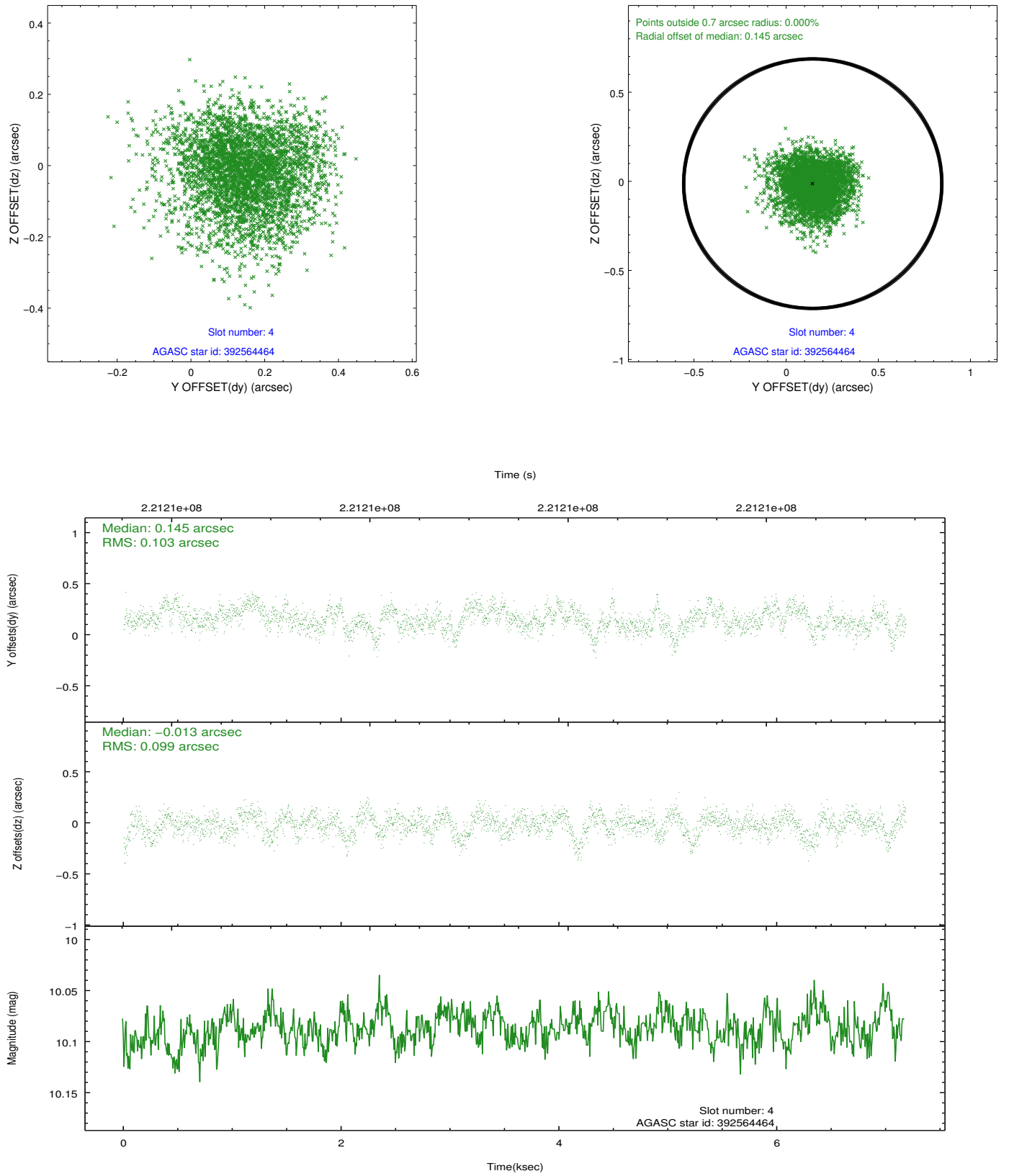
slot	status	id	mag	n_pts	med_dy	med_dz	dr1	dr2	ra	dec	mean_y	mean_z
0	FID	ACIS-S-2	7.10	1751	-0.070	-0.050	0.008	0.024	0.000000	0.000000	-758.84	-1730.79
1	FID	ACIS-S-4	7.21	1751	0.121	0.047	0.007	0.029	0.000000	0.000000	2154.24	176.99
2	FID	ACIS-S-5	7.23	1751	-0.081	0.011	0.008	0.023	0.000000	0.000000	-1810.68	171.49
3	GUIDE	392561096	9.83	3502	-0.087	-0.080	0.111	0.184	143.974322	41.994916	1859.08	2248.46
4	GUIDE	392564464	10.09	3501	0.145	-0.013	0.154	0.248	144.802508	41.190441	-1573.58	995.48
5	GUIDE	392564728	8.01	3501	-0.046	0.040	0.070	0.124	144.927557	42.064957	1332.80	-258.08
6	GUIDE	392568728	8.91	3501	-0.128	0.067	0.092	0.144	144.864302	42.285874	2143.23	-332.43
7	GUIDE	392571296	10.71	3498	0.113	-0.008	0.212	0.362	144.839482	41.129508	-1812.73	964.01

## 2.4 Star Slots

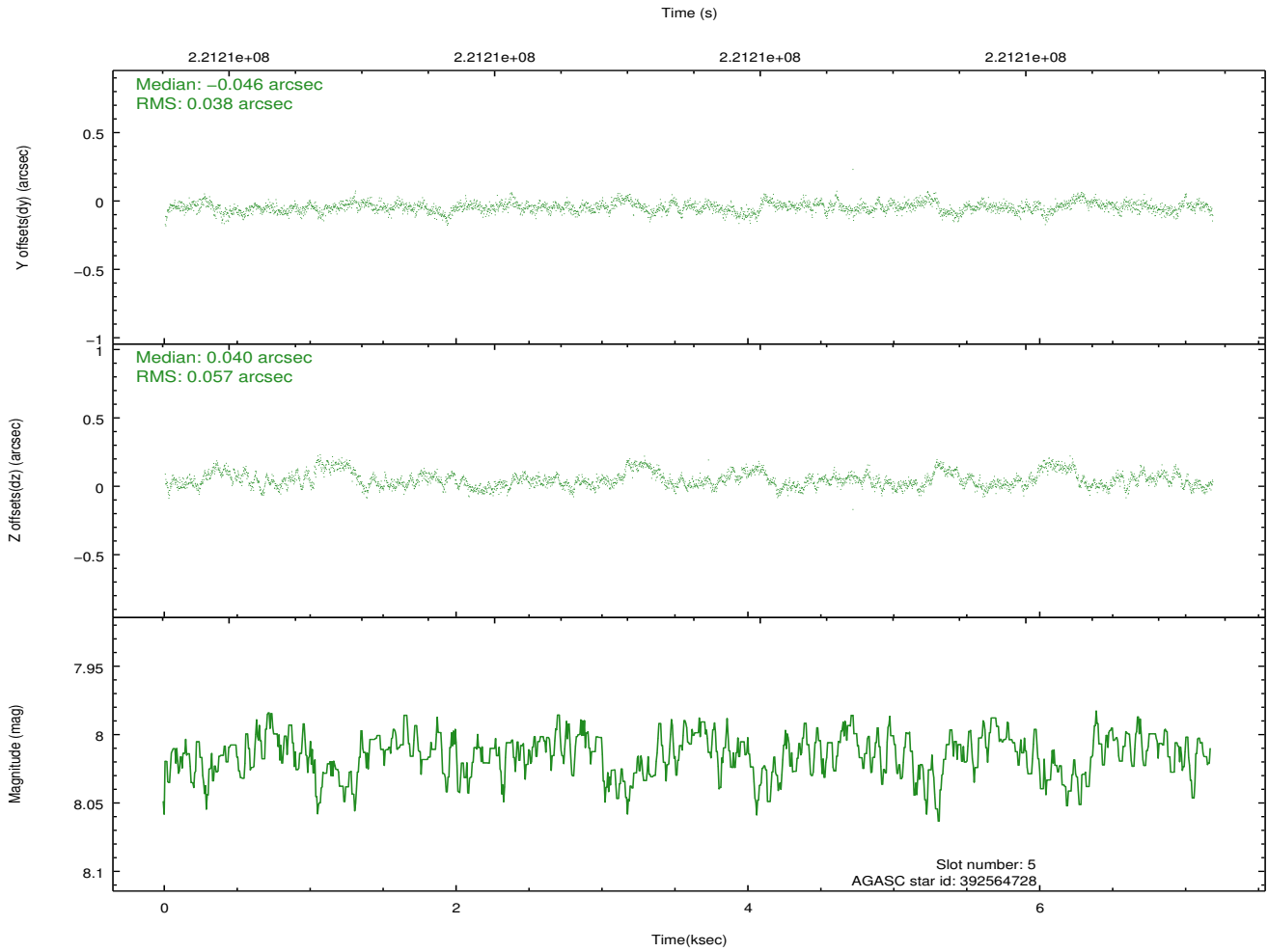
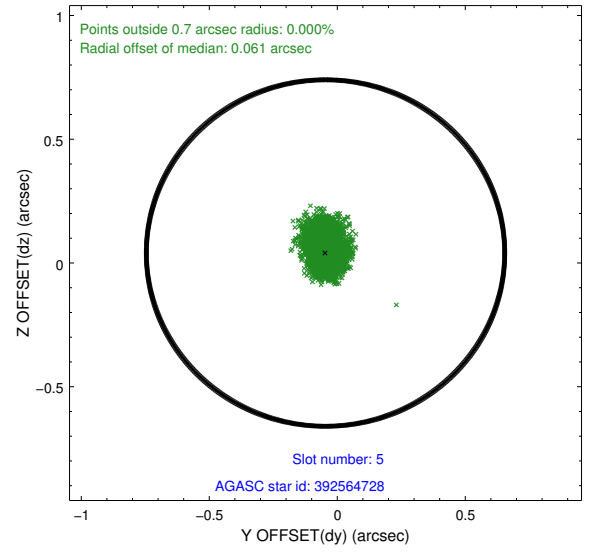
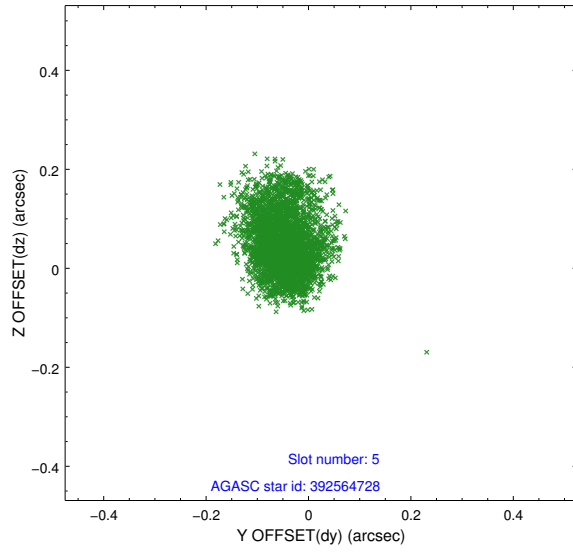
### 2.4.1 Slot 3



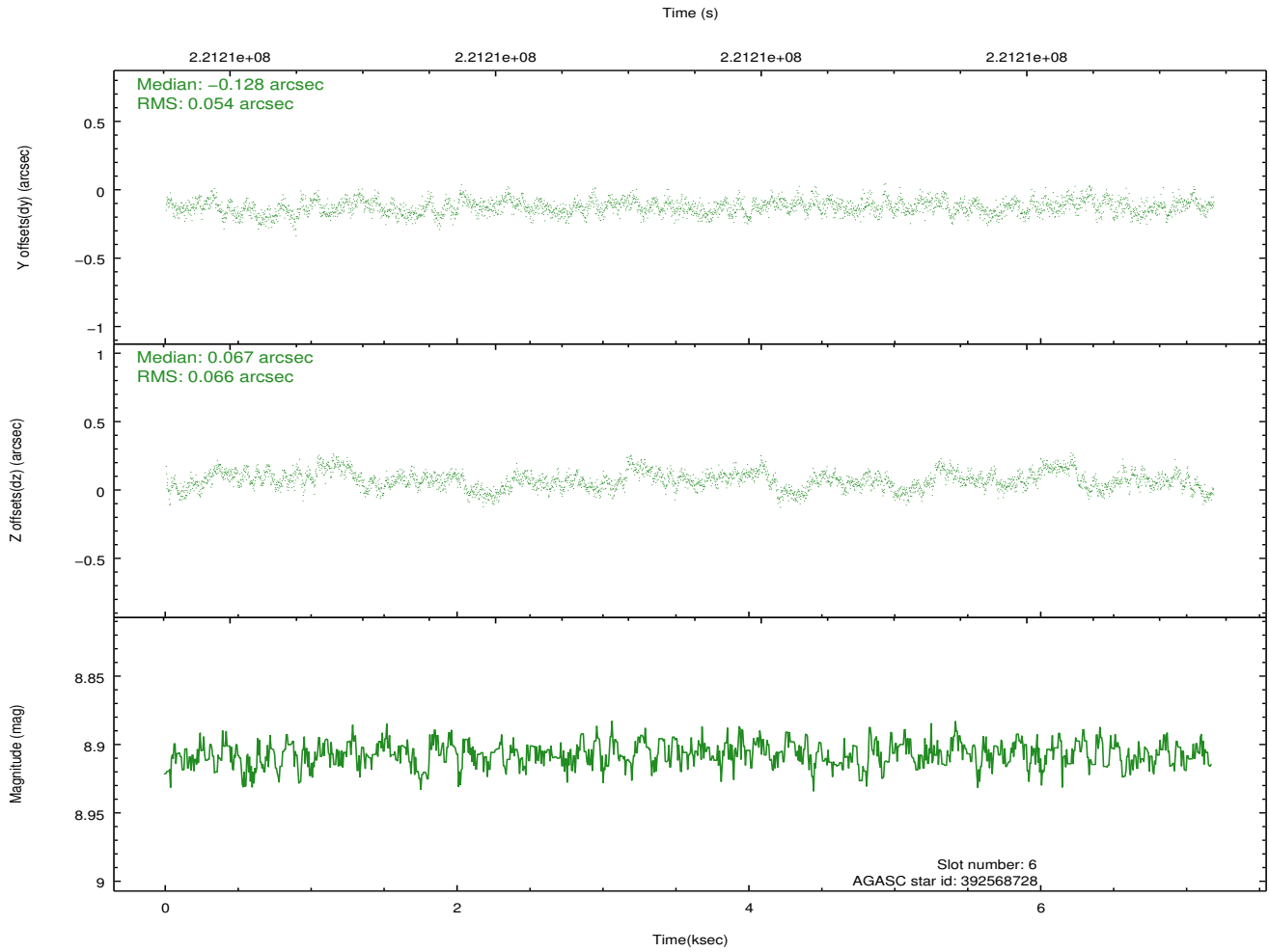
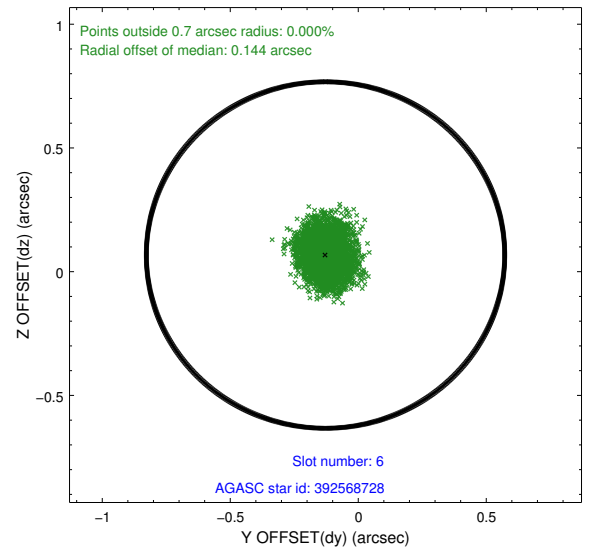
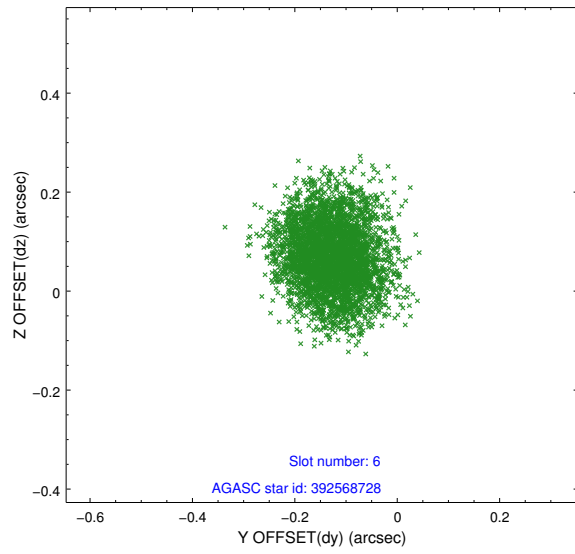
## 2.4.2 Slot 4



### 2.4.3 Slot 5

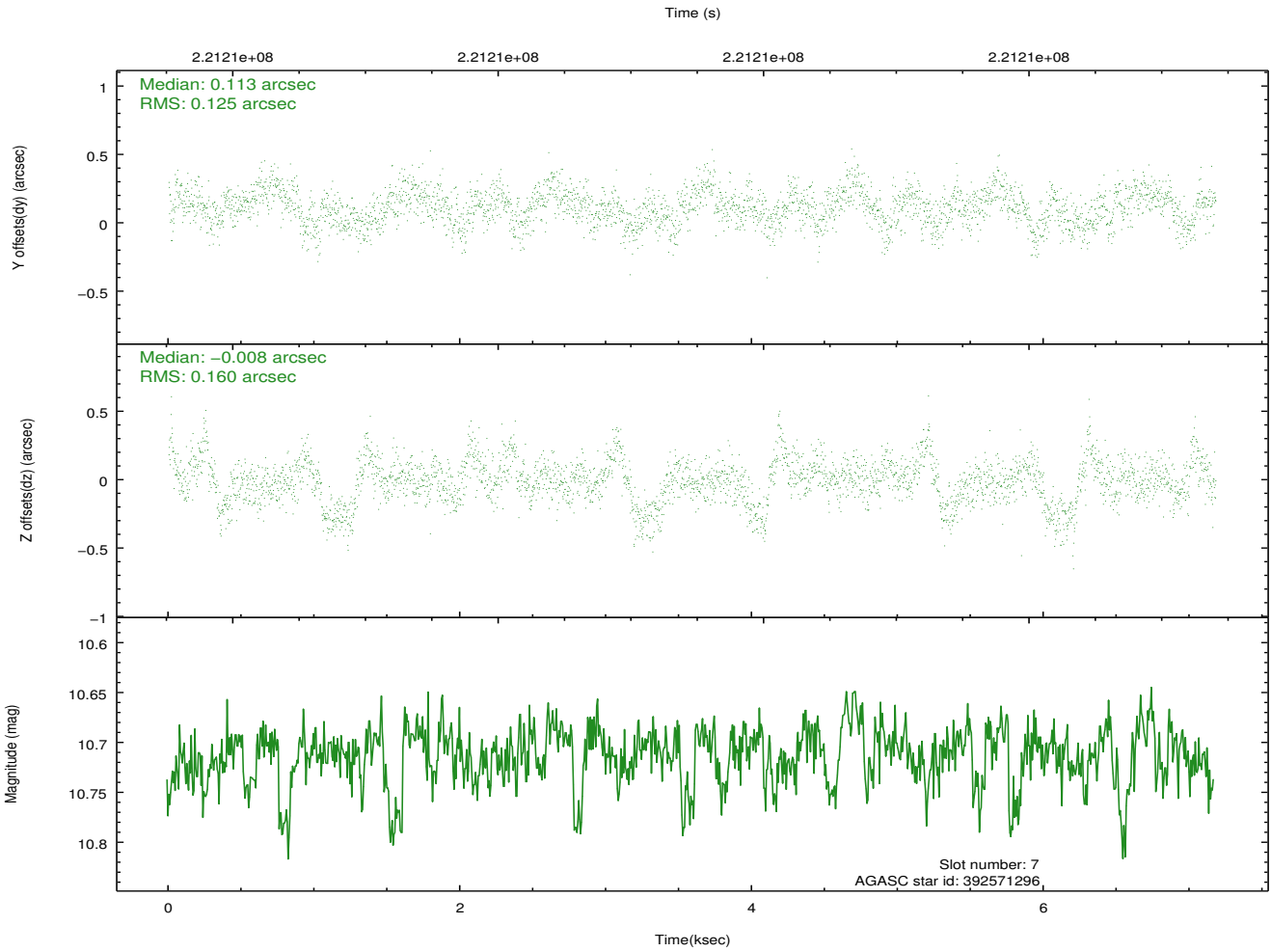
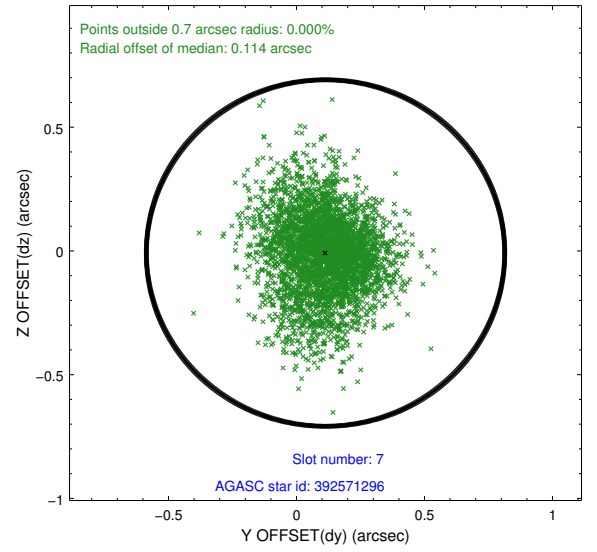
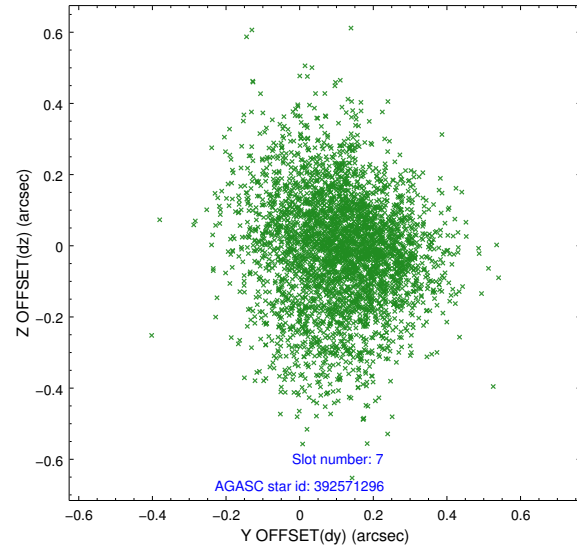


## 2.4.4 Slot 6



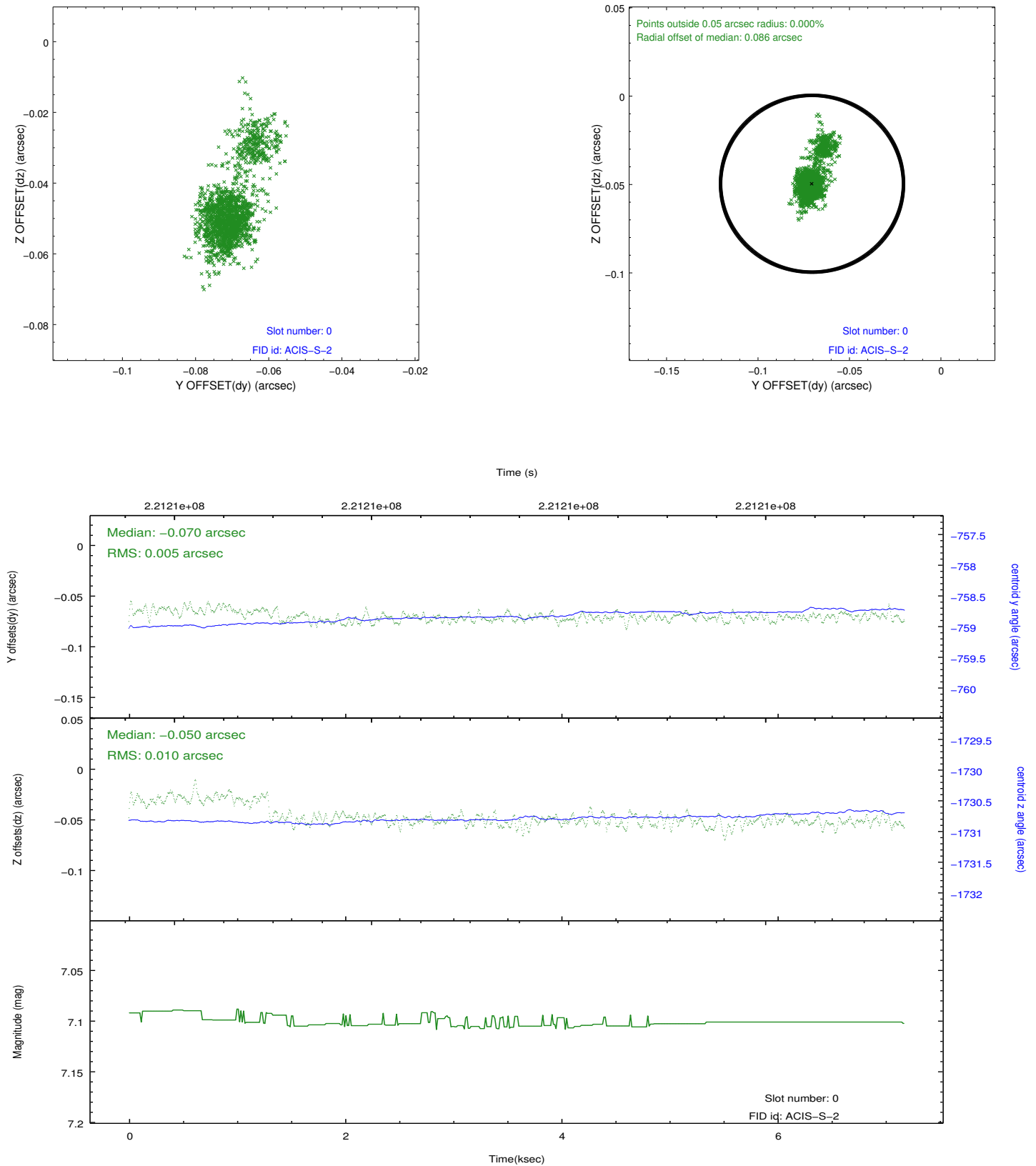


## 2.4.5 Slot 7

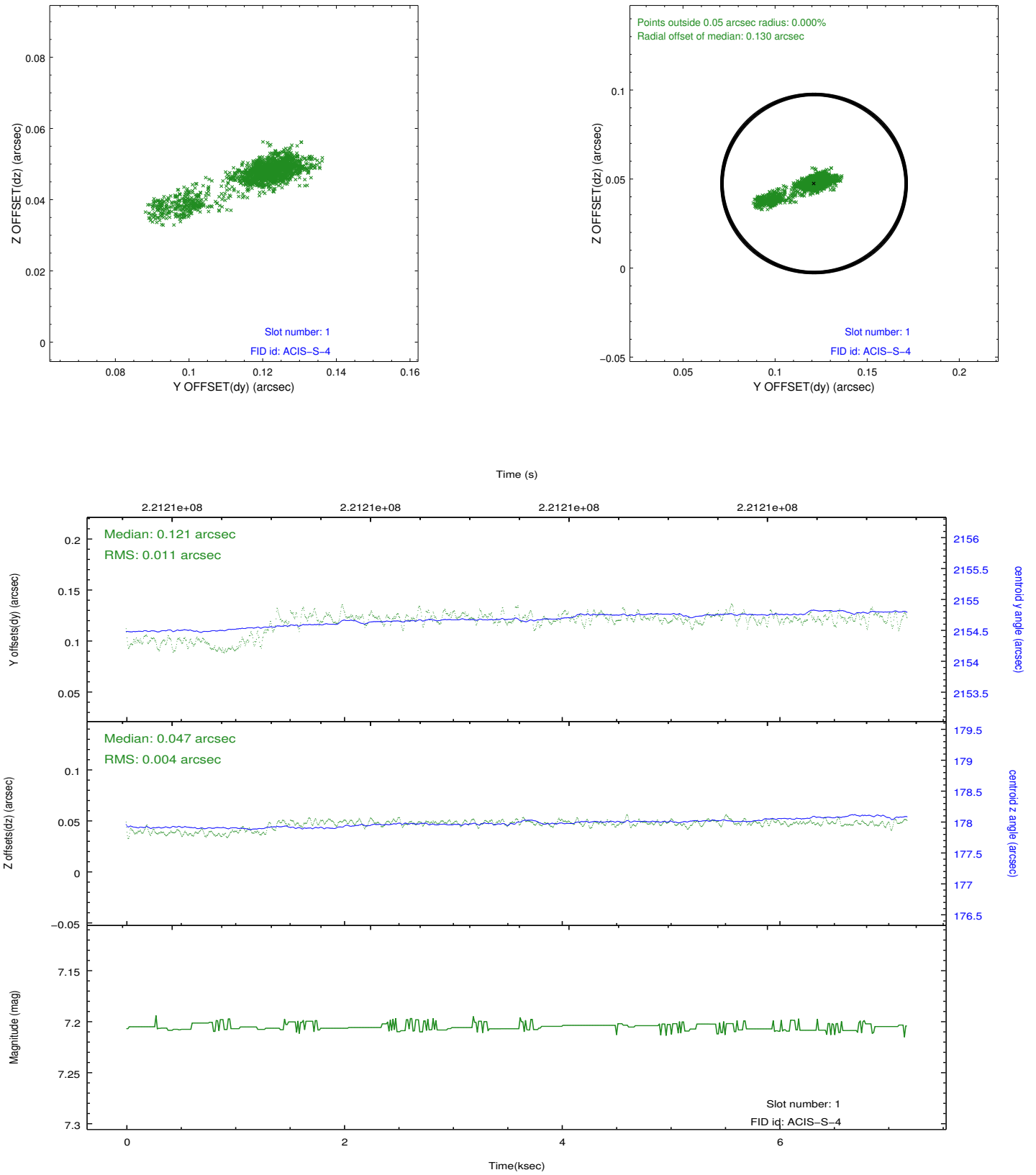


## 2.5 FID Slots

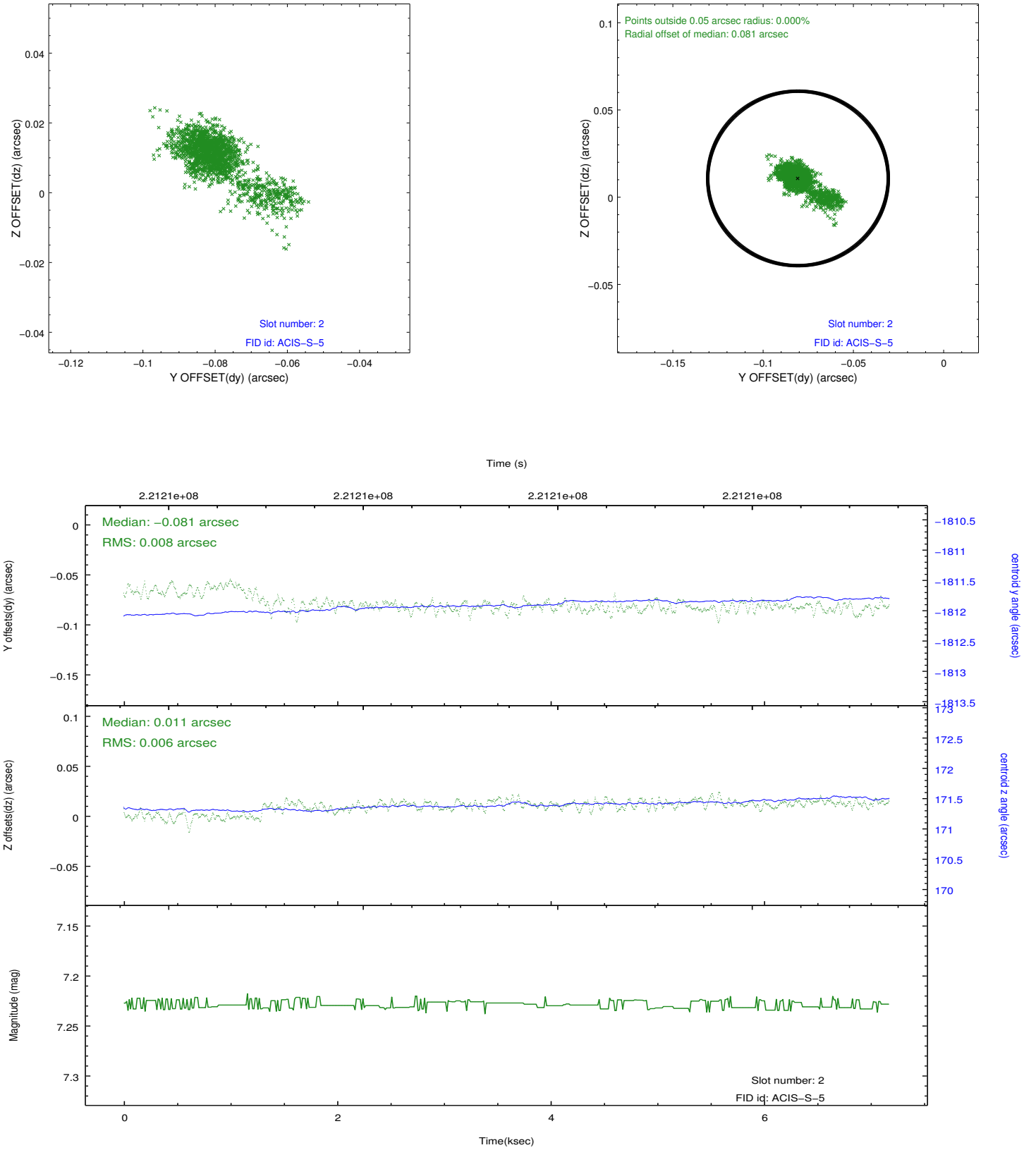
### 2.5.1 Slot 0



## 2.5.2 Slot 1



### 2.5.3 Slot 2



## A Summary

### A.1 Status

V&V Scientist	Jen Lauer
V&V Date (YYYY-MM-DD)	2013.01.08
V&V Edition	1
V&V Disposition and Status	OK
V&V Charge Time	7.171199

### A.2 Comments