

# V&V Reference Report

## L2 ASCDS Version : 8.4.5

Observation 56736 - L2 Version 2  
Chandra X-Ray Center

L2 Processing Date : Jun 14 2012

## Contents

<b>1</b>	<b>Front</b>	<b>2</b>
<b>2</b>	<b>OBI</b>	<b>3</b>
2.1	OBI . . . . .	3
2.1.1	Images . . . . .	3
2.1.2	Bias . . . . .	3
2.1.3	Parameters . . . . .	4
2.1.4	Events . . . . .	4
2.2	Compared Parameters . . . . .	5
2.3	Star Slots . . . . .	6
2.4	FID Slots . . . . .	6
<b>A</b>	<b>Summary</b>	<b>7</b>
A.1	Status . . . . .	7
A.2	Comments . . . . .	7

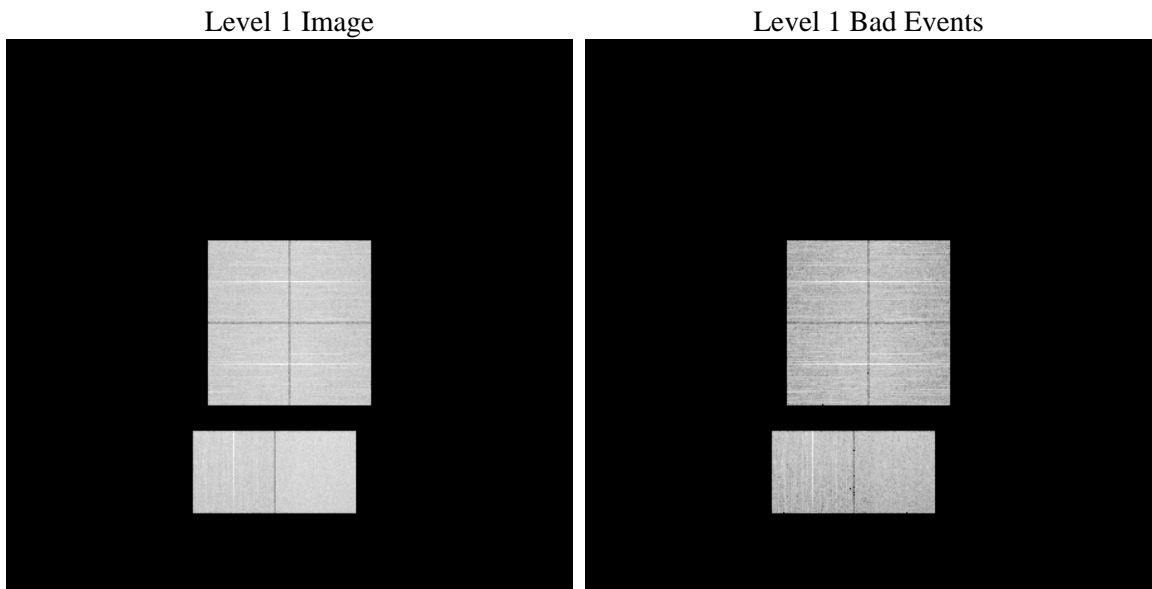
# 1 Front

seq_num	&#160	Sequence number
obs_id	56736	Observation id
title	ACIS-012367 diagnostics	Proposal title
observer	CHANDRA engineering request/realtime commanding	Principal investig
object	&#160	Source name
dtcycle	0	&#160
cycle	P	events from which exps? Prim/Second/Both
ra_targ	0.0	Observer's specified target RA [deg]
dec_targ	0.0	Observer's specified target Dec [deg]
ra_nom	30.323816883611	Nominal RA [deg]
dec_nom	-21.578423707934	Nominal Dec [deg]
roll_nom	5.5329535106695	Nominal Roll [deg]
revision	2	Processing version of data
ontime	8271.999969244	Sum of GTIs [s]
livetime	8167.254924833	Livetime [s]
ontime0	8271.999969244	Sum of GTIs [s]
ontime1	8271.999969244	Sum of GTIs [s]
ontime2	8271.999969244	Sum of GTIs [s]
ontime3	8271.999969244	Sum of GTIs [s]
ontime6	8271.999969244	Sum of GTIs [s]
ontime7	8271.999969244	Sum of GTIs [s]
l2events	445998	Number of level 2 events

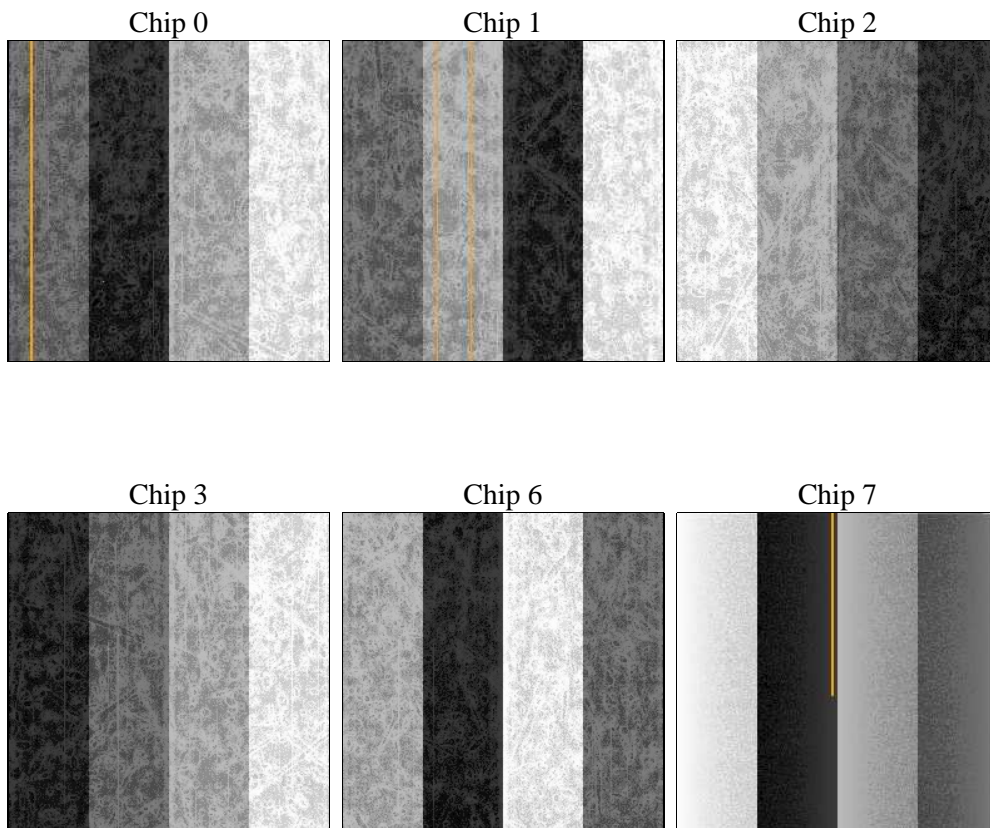
## 2 OBI

### 2.1 OBI

#### 2.1.1 Images



#### 2.1.2 Bias



### 2.1.3 Parameters

obi_num	0	Obi number	sched_exp_time	0.0	[s] Scheduled observation exposure time
ascdsver	8.4.5	Processing system revision	ontime	8271.999969244	Sum of GTIs [s]
caldsver	4.4.10	&#160	ontime0	8271.999969244	Sum of GTIs [s]
date	2012-06-15T02:33:49	Date and time of file creation	ontime1	8271.999969244	Sum of GTIs [s]
revision	2	Processing version of data	ontime2	8271.999969244	Sum of GTIs [s]
			ontime3	8271.999969244	Sum of GTIs [s]
			ontime6	8271.999969244	Sum of GTIs [s]
			ontime7	8271.999969244	Sum of GTIs [s]
			l1events	923793	Number of level 1 events

### 2.1.4 Events

	ccd 0	ccd 1	ccd 2	ccd 3	ccd 6	ccd 7		ccd 0	ccd 1	ccd 2	ccd 3	ccd 6	ccd 7
level 1 events	143111	146870	150475	150007	151130	182200	grade 0 events	37802	37798	38399	39232	38648	19931
rejected events	71544	74622	79028	78063	76638	72277		26%	25%	25%	26%	25%	10%
rejected %	49%	50%	52%	52%	50%	39%	grade 1 events	285	211	309	337	242	163
								0%	0%	0%	0%	0%	0%
							grade 2 events	13110	13817	12525	12317	13634	23966
								9%	9%	8%	8%	9%	13%
							grade 3 events	4950	4721	4992	5041	4912	10238
								3%	3%	3%	3%	3%	5%
							grade 4 events	4801	4727	4944	5048	4858	10069
								3%	3%	3%	3%	3%	5%
							grade 5 events	4113	4247	3910	4659	4598	11691
								2%	2%	2%	3%	3%	6%
							grade 6 events	10924	11202	10622	10336	12481	45747
								7%	7%	7%	6%	8%	25%
							grade 7 events	67126	70147	74774	73037	71757	60395
								46%	47%	49%	48%	47%	33%

## 2.2 Compared Parameters

Parameter	Planned	Actual	Parameter	Planned	Actual
Instrument	ACIS	ACIS	Obspar format version number	7	7
Detector	ACIS-012367	ACIS-012367	Obspar file type	PREDICTED	ACTUAL
Grating	NONE	NONE	Obspar update status	NONE	UPDATED
Data mode	FAINT	FAINT	Number of optional ACIS chips dropped	0	0
Observation mode	SECONDARY	SECONDARY	On-chip summing requested	N	N
[deg] Pointing RA	0	30.32381688361072	Subarray requested	NONE	NONE
[deg] Pointing Dec	0	-21.57842370793374	Alternating exposures requested	N	N
[deg] Pointing Roll	0.0	5.532953510669463	[s] Primary exposure time	3.2	3.2
[mm] SIM focus pos	-1.429586	-0.6828225247311905			
[mm] SIM defocus	0.1037507710433287	0.8505141146731063			
[mm] SIM translation stage pos	250.455976	250.466033080201			
[mm] SIM translation stage offset	0	-0.01005468664627074			
[s] Observation start time (MET)	372622348.143037	372622347.11804			
Observation start date	2009-10-22T18:12:28	2009-10-22T18:12:27			
[s] Observation end time (MET)	372642739.494064	372642738.46907			
Observation end date	2009-10-22T23:52:19	2009-10-22T23:52:18			
Read mode	TIMED	TIMED			

## **2.3 Star Slots**

## **2.4 FID Slots**

## A Summary

### A.1 Status

V&V Scientist	Jen Lauer
V&V Date (YYYY-MM-DD)	2012.06.19
V&V Edition	1
V&V Disposition and Status	OK
V&V Charge Time	8.271999969244

### A.2 Comments