

# V&V Reference Report

## L2 ASCDS Version : 7.6.7.1

Observation 5596 - L2 Version 002  
Chandra X-Ray Center

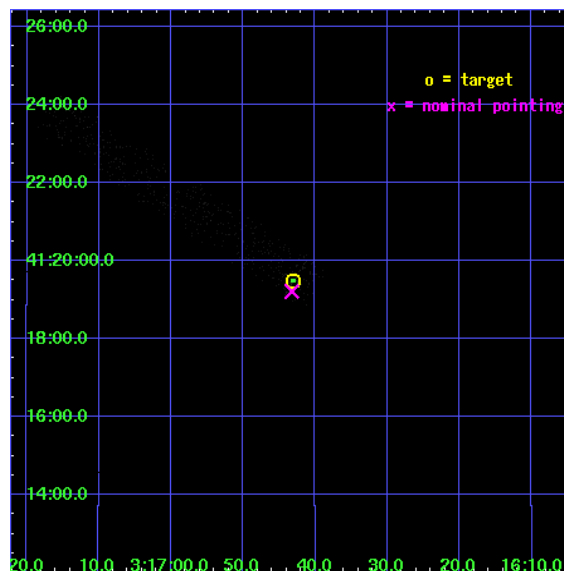
L2 Processing Date : Mar 17 2006

## Contents

<b>1</b>	<b>Front</b>	<b>2</b>
<b>2</b>	<b>OBI</b>	<b>3</b>
2.1	OBI . . . . .	3
2.1.1	Images . . . . .	3
2.1.2	Bias . . . . .	3
2.1.3	Parameters . . . . .	4
2.1.4	Events . . . . .	4
2.2	Compared Parameters . . . . .	5
2.3	Aspect . . . . .	6
2.4	Star Slots . . . . .	9
2.4.1	Slot 3 . . . . .	9
2.4.2	Slot 4 . . . . .	10
2.4.3	Slot 5 . . . . .	11
2.4.4	Slot 6 . . . . .	12
2.4.5	Slot 7 . . . . .	13
2.5	FID Slots . . . . .	14
2.5.1	Slot 0 . . . . .	14
2.5.2	Slot 1 . . . . .	15
2.5.3	Slot 2 . . . . .	16
<b>3</b>	<b>Point Sources</b>	<b>17</b>
<b>A</b>	<b>Summary</b>	<b>18</b>
A.1	Status . . . . .	18
A.2	Comments . . . . .	18

# 1 Front

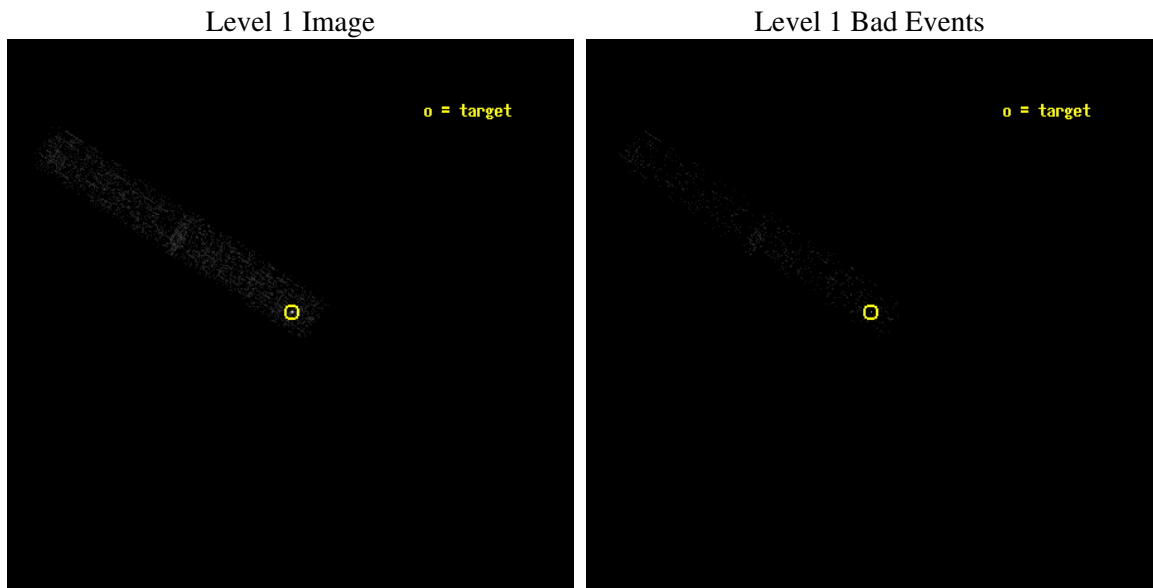
seq_num	701020
obs_id	5596
title	An X-ray study of the hot gas environment around the nearby radio galaxy IC 310
observer	Dr. Steven Murray
object	IC 310
dtcycle	0
cycle	P
ra_targ	49.179167
dec_targ	41.324833
ra_nom	49.18019505212
dec_nom	41.320330473122
roll_nom	302.95972200555
revision	2
ontime	5181.75
livetime	1506.3226744186
ontime3	5181.75
l2events	1601



## 2 OBI

### 2.1 OBI

#### 2.1.1 Images



#### 2.1.2 Bias



### 2.1.3 Parameters

obi_num	0
ascdsver	7.6.7.1
caldbver	3.2.1
date	2006-03-17T14:42:35
revision	2

sched_exp_time	5000.000000
ontime	5580.9883728325
ontime3	5580.9883728325
l1events	5889

### 2.1.4 Events

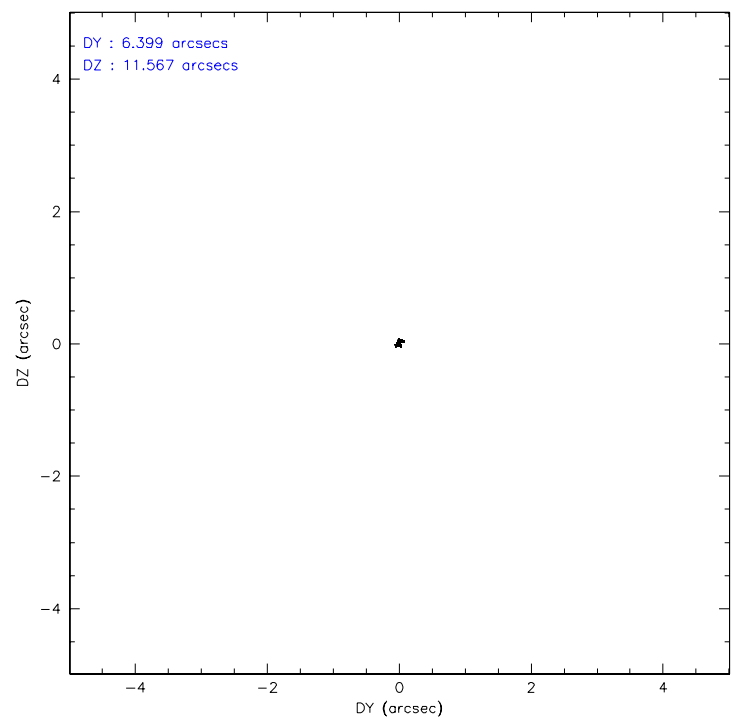
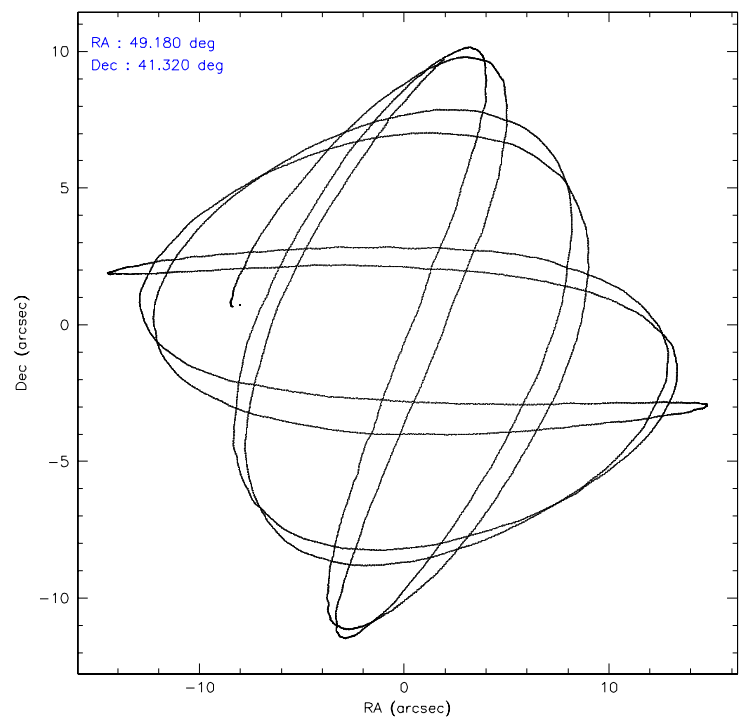
	<b>ccd 3</b>
level 1 events	5889
rejected events	4203
rejected %	71%

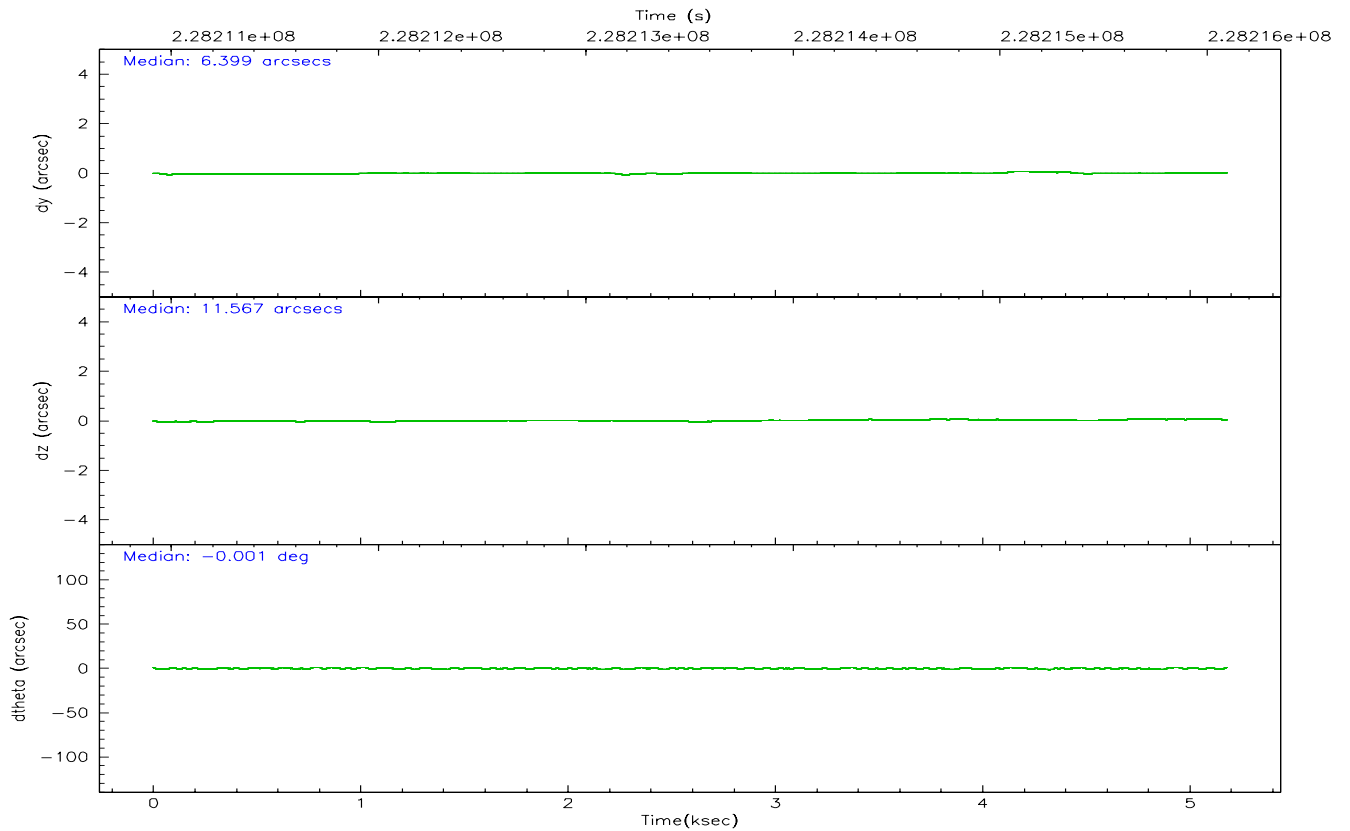
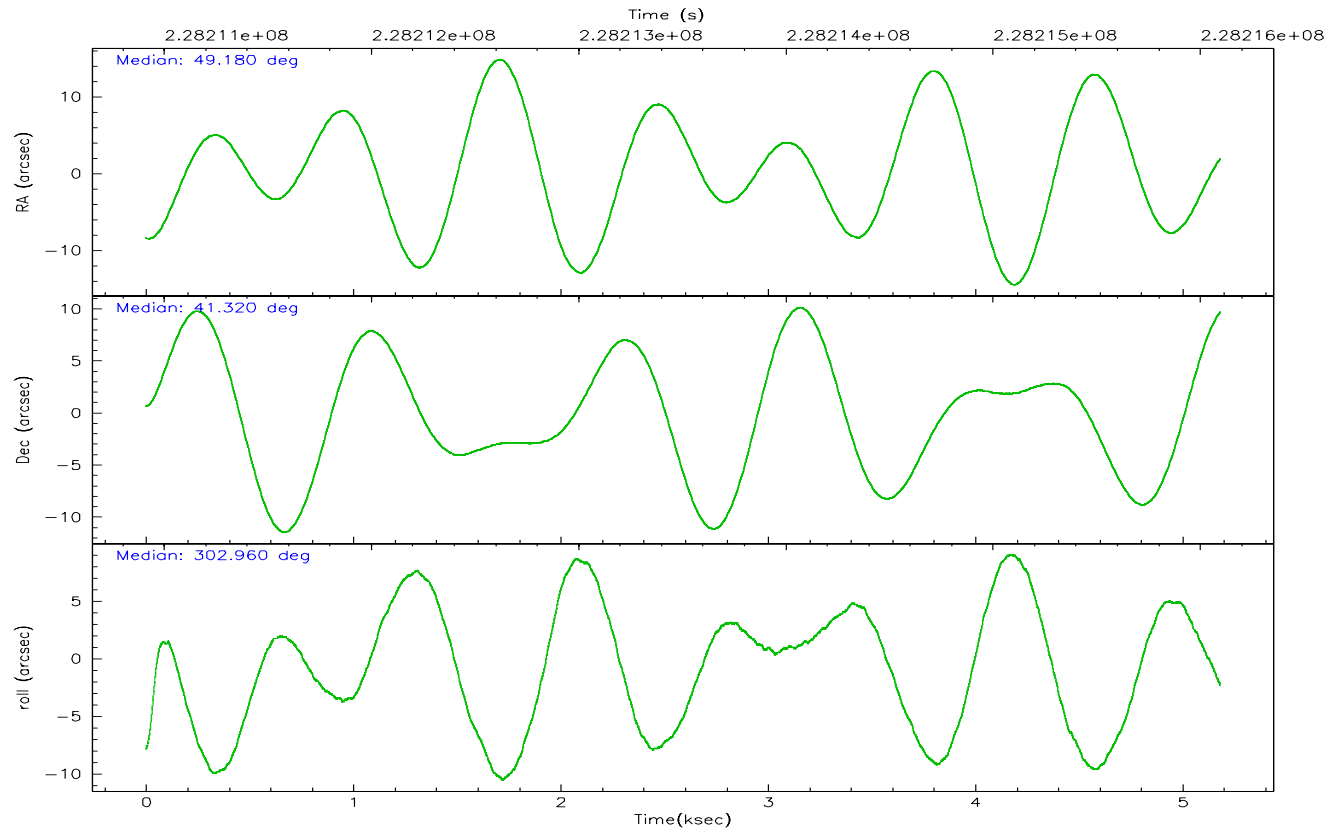
	<b>ccd 3</b>
grade 0 events	1247
	21%
grade 1 events	19
	0%
grade 2 events	179
	3%
grade 3 events	131
	2%
grade 4 events	124
	2%
grade 5 events	117
	1%
grade 6 events	85
	1%
grade 7 events	3987
	67%

## 2.2 Compared Parameters

Parameter	Planned	Actual	Parameter	Planned	Actual
Instrument	ACIS	ACIS	Obspar format version number	6	6
Detector	ACIS-3	ACIS-3	Obspar file type	PREDICTED	ACTUAL
Grating	NONE	NONE	Obspar update status	NONE	UPDATED
Data mode	FAINT	FAINT	On-chip summing requested	N	N
Observation mode	POINTING	POINTING	Subarray requested	1/8	1/8
Pointing RA	49.147685	49.18019505211974	Subarray start row	0	897
Pointing Dec	41.332613	41.32033047312213	Subarray row count	1024	128
Pointing Roll	302.772532	302.9597220055515	Alternating exposures requested	N	N
SIM focus pos (mm)	-0.782348	-0.7809083437167272	Primary exposure time	0.000000	0.2
SIM defocus (mm)	0	0.001439871863259334			
SIM translation stage pos (mm)	-233.592463	-233.5874344608287			
SIM translation stage offset (mm)	0	-0.005018542100998502			
Observation start time	228211092.184000	228210183.19151			
Observation start date	2005-03-26T07:57:08	2005-03-26T07:43:03			
Observation end time	228216092.184000	228216799.56681			
Observation end date	2005-03-26T09:20:28	2005-03-26T09:33:19			
Read mode	TIMED	TIMED			

## 2.3 Aspect





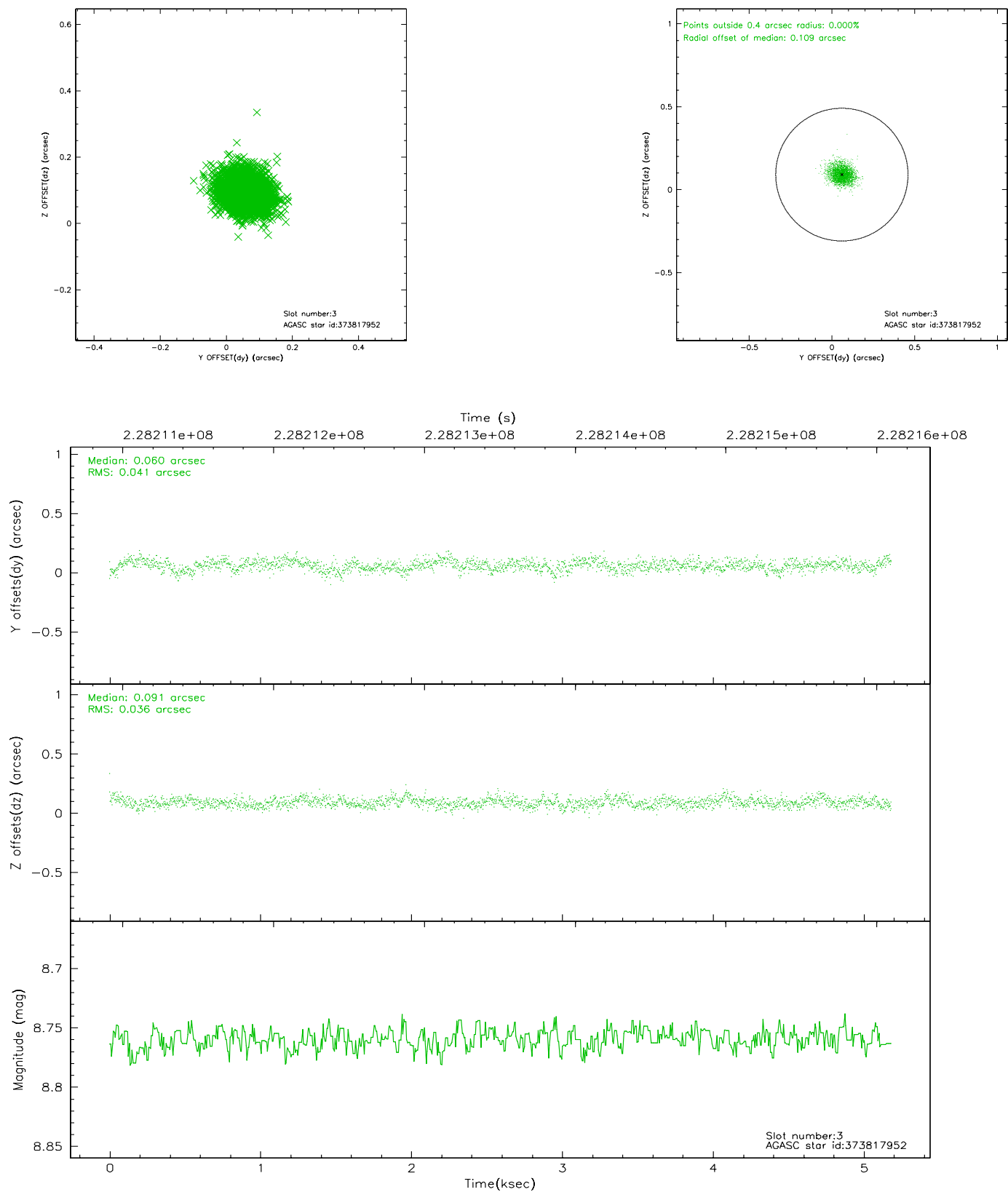
### Slot Statistics

slot	status	id	mag	n_pts	med_dy	med_dz	dr1	dr2	ra	dec	mean_y	mean_z
0	FID	ACIS-I-1	7.24	1264	0.021	0.011	0.006	0.010	0.000000	0.000000	933.30	-835.10
1	FID	ACIS-I-5	7.22	1264	-0.127	0.053	0.006	0.010	0.000000	0.000000	-1814.26	1061.91
2	FID	ACIS-I-6	7.25	1264	0.015	0.007	0.006	0.011	0.000000	0.000000	397.63	1707.64
3	GUIDE	373817952	8.76	2528	0.060	0.091	0.057	0.094	49.913424	40.978510	2191.20	1065.09
4	GUIDE	373826120	8.90	2529	0.114	0.023	0.068	0.113	49.738165	41.186341	1305.48	1063.64
5	GUIDE	374353904	8.33	2529	-0.129	-0.113	0.089	0.136	48.175092	41.439059	-1754.53	-1991.13
6	GUIDE	374355168	8.55	2528	-0.004	-0.064	0.061	0.100	48.517523	41.466988	-1332.20	-1164.77
7	GUIDE	374358688	9.30	2528	-0.035	0.064	0.099	0.159	49.259903	42.100043	-2161.17	1747.44

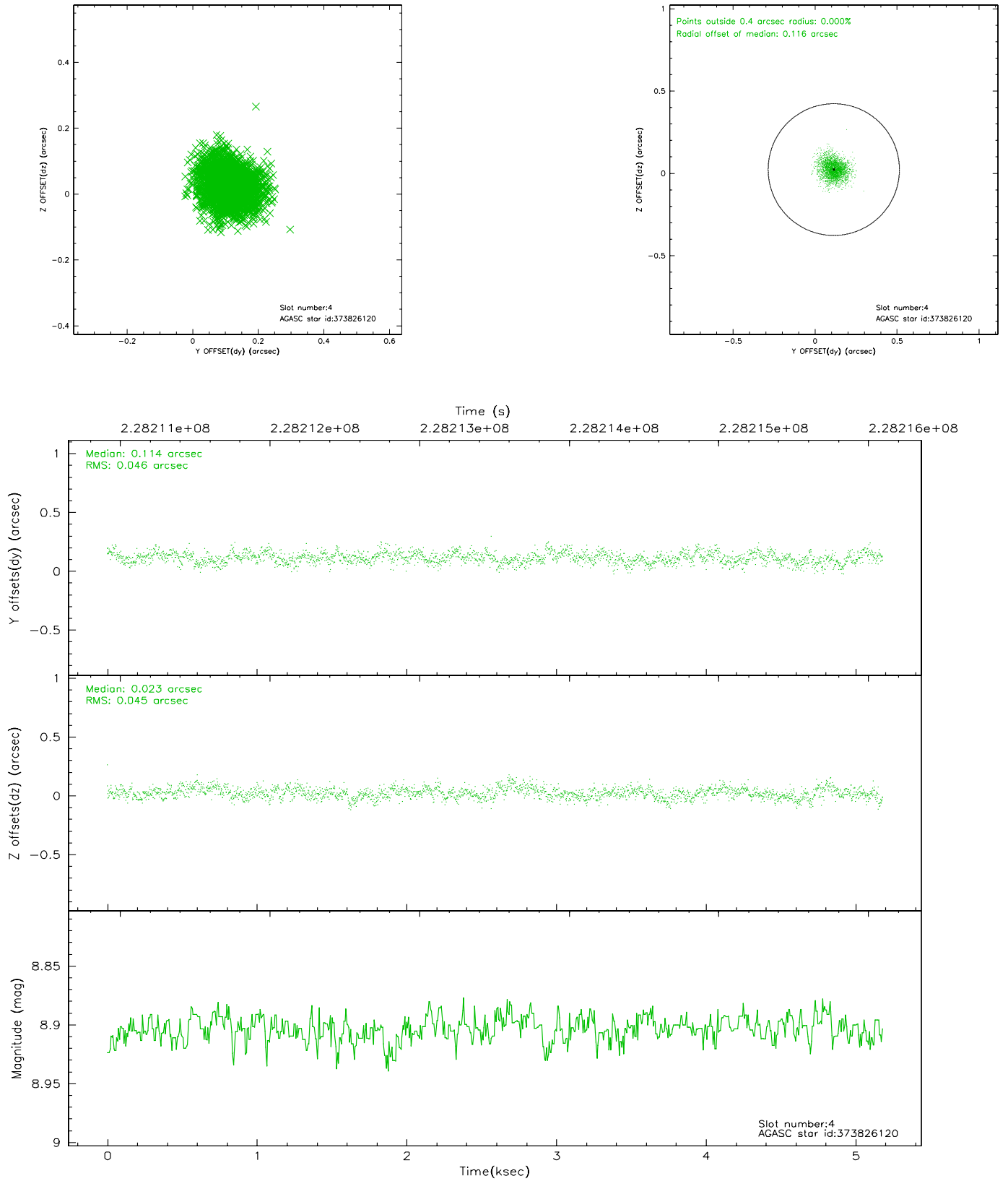


## 2.4 Star Slots

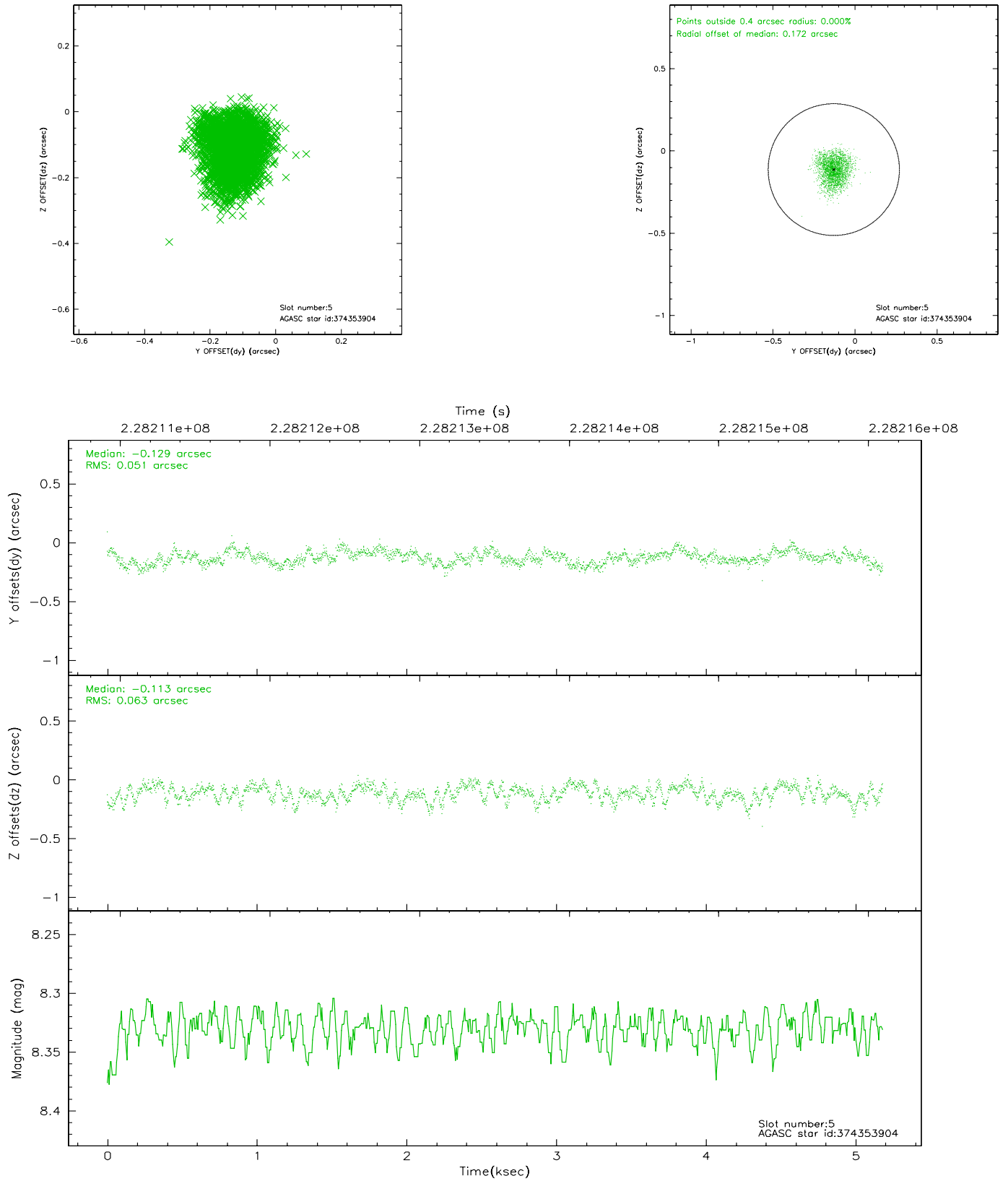
### 2.4.1 Slot 3



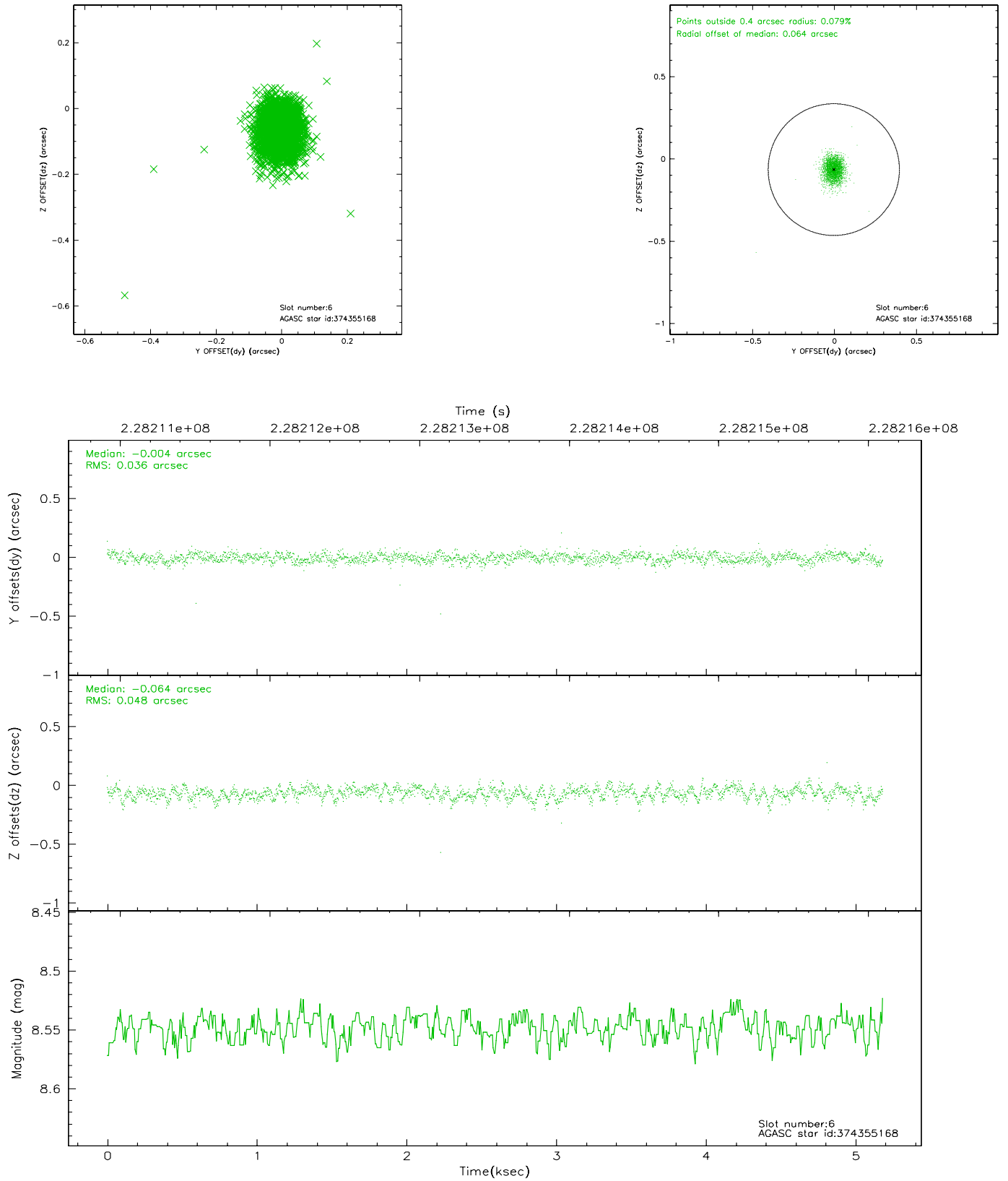
## 2.4.2 Slot 4



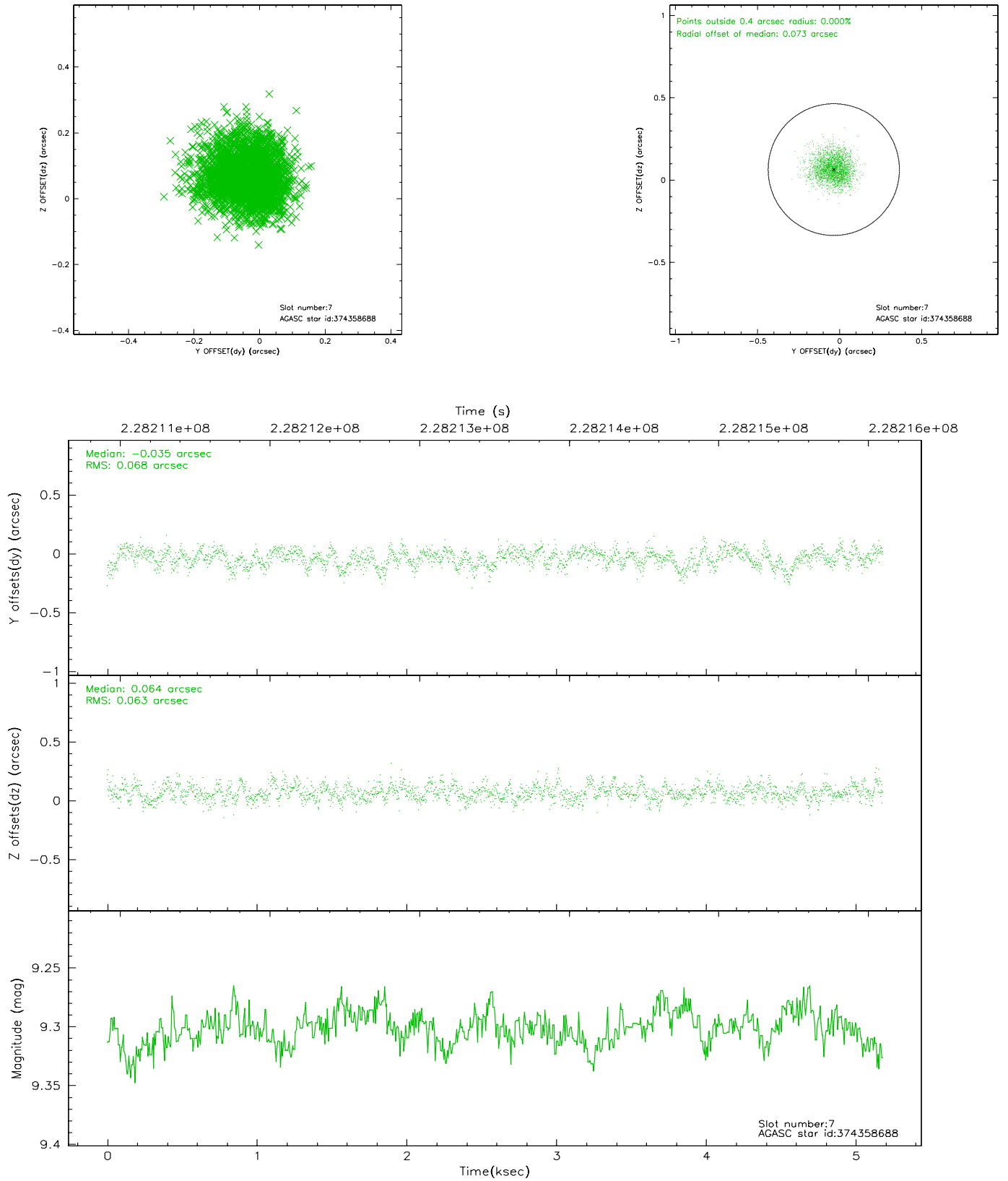
### 2.4.3 Slot 5



## 2.4.4 Slot 6

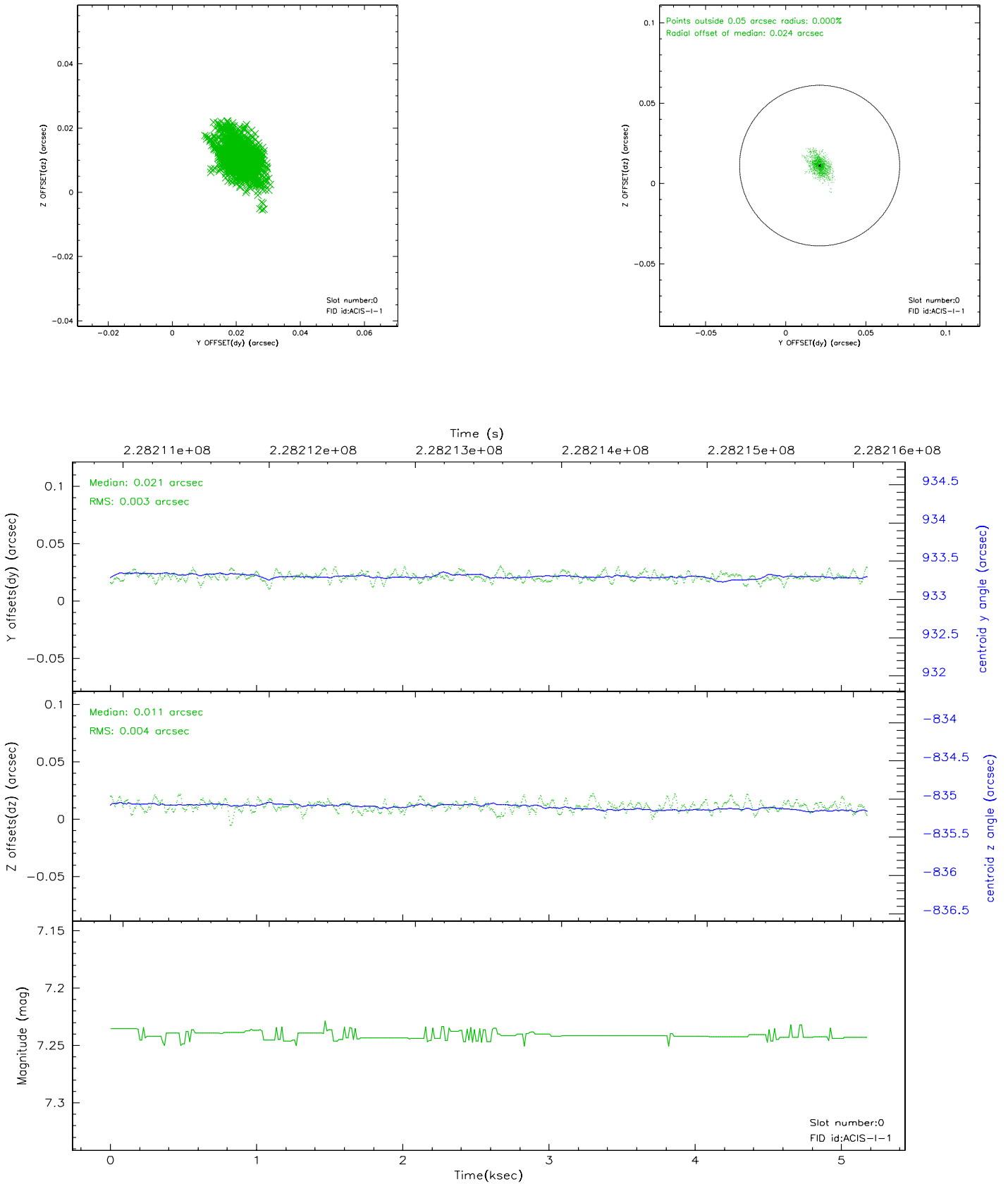


## 2.4.5 Slot 7

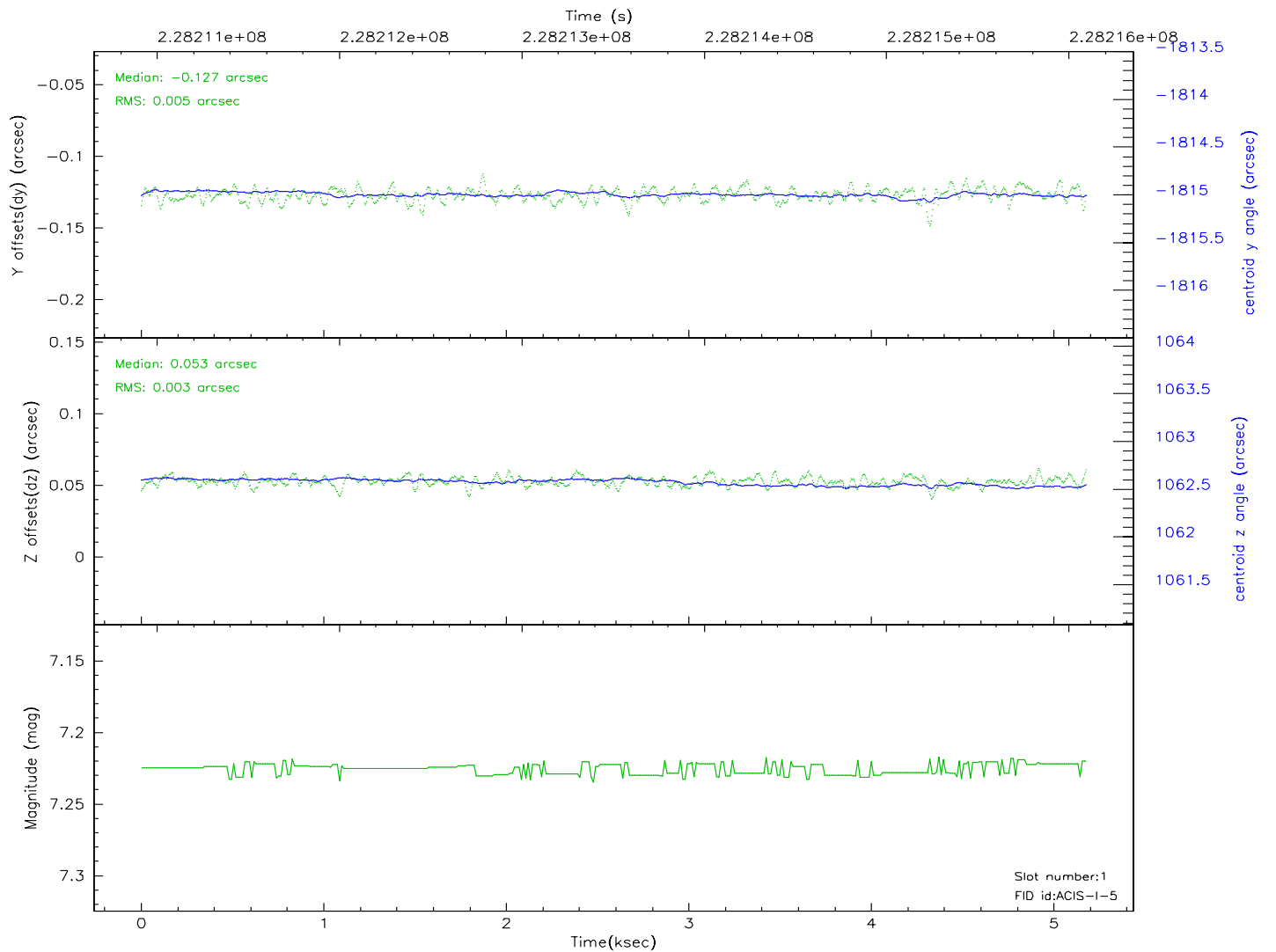
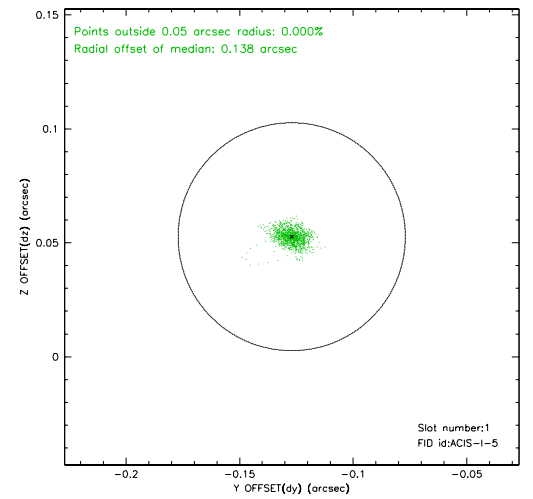
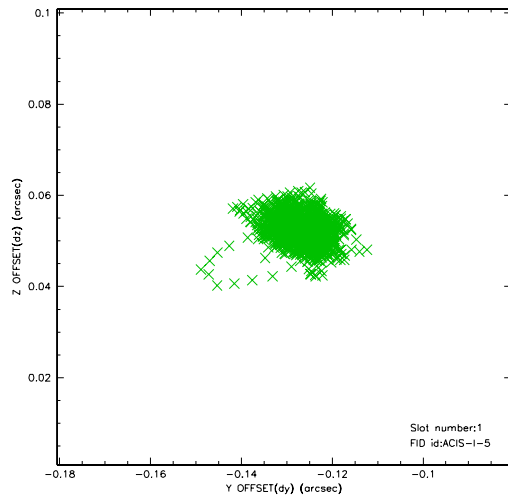


## 2.5 FID Slots

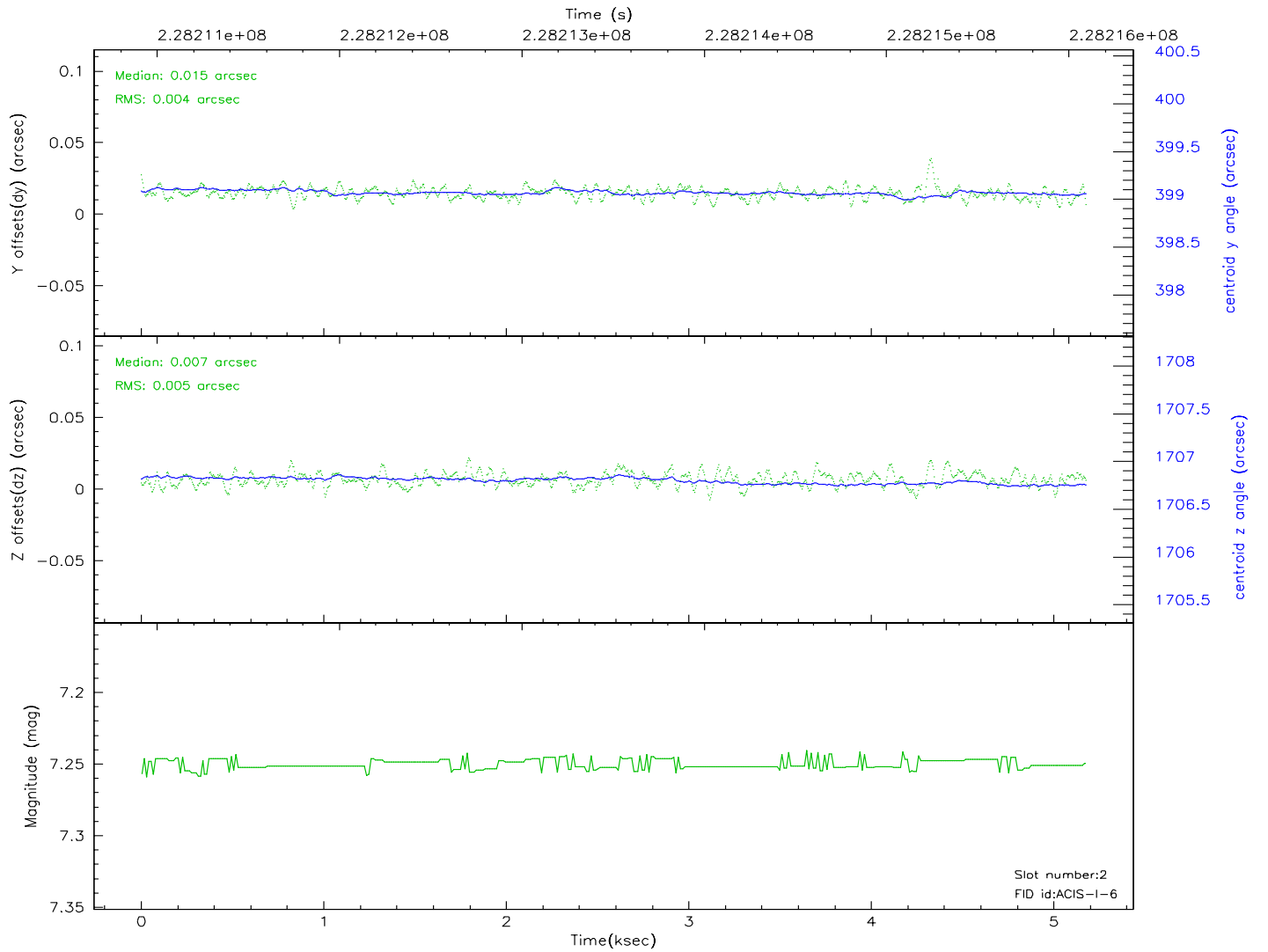
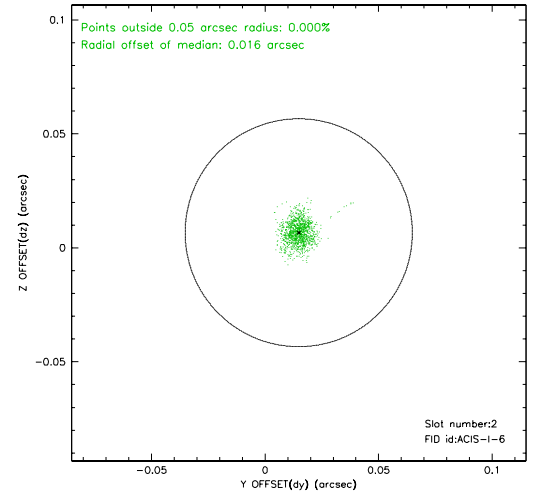
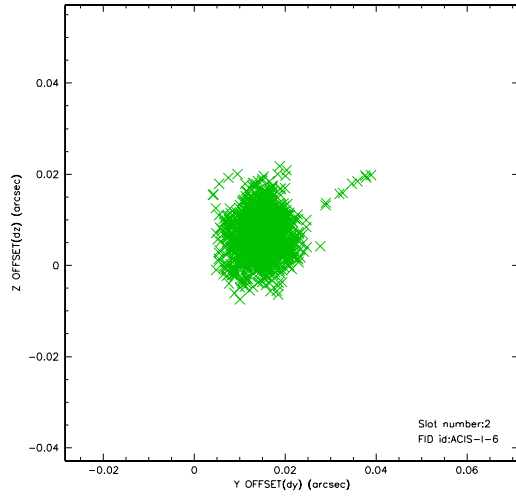
### 2.5.1 Slot 0



## 2.5.2 Slot 1



### 2.5.3 Slot 2





### 3 Point Sources

## A Summary

### A.1 Status

V&V Scientist	Beth Sundheim
V&V Date (YYYY-MM-DD)	2006.03.17
V&V Edition	1
V&V Disposition and Status	OK
V&V Charge Time	5.18175

### A.2 Comments