

# V&V Reference Report

## L2 ASCDS Version : 8.4.3

Observation 55736 - L2 Version 2  
Chandra X-Ray Center

L2 Processing Date : Feb 2 2012

## Contents

<b>1</b>	<b>Front</b>	<b>2</b>
<b>2</b>	<b>OBI</b>	<b>3</b>
2.1	OBI . . . . .	3
2.1.1	Images . . . . .	3
2.1.2	Bias . . . . .	3
2.1.3	Parameters . . . . .	4
2.1.4	Events . . . . .	4
2.2	Compared Parameters . . . . .	5
2.3	Star Slots . . . . .	6
2.4	FID Slots . . . . .	6
<b>A</b>	<b>Summary</b>	<b>7</b>
A.1	Status . . . . .	7
A.2	Comments . . . . .	7

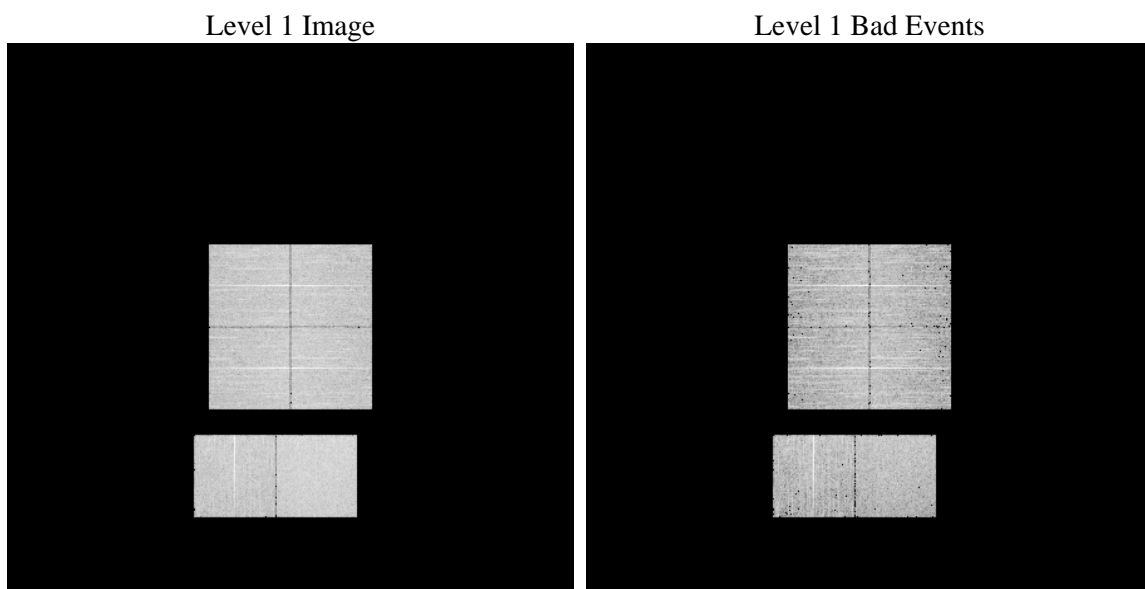
# 1 Front

seq_num	&#160	Sequence number
obs_id	55736	Observation id
title	ACIS-012367 diagnostics	Proposal title
observer	CHANDRA engineering request/realtime commanding	Principal investig
object	&#160	Source name
dtcycle	0	&#160
cycle	P	events from which exps? Prim/Second/Both
ra_targ	0.0	Observer's specified target RA [deg]
dec_targ	0.0	Observer's specified target Dec [deg]
ra_nom	107.97200341177	Nominal RA [deg]
dec_nom	45.4789704645	Nominal Dec [deg]
roll_nom	194.00251381296	Nominal Roll [deg]
revision	2	Processing version of data
ontime	5356.799980104	Sum of GTIs [s]
livetime	5288.9689532782	Livetime [s]
ontime0	5356.799980104	Sum of GTIs [s]
ontime1	5356.799980104	Sum of GTIs [s]
ontime2	5356.799980104	Sum of GTIs [s]
ontime3	5356.799980104	Sum of GTIs [s]
ontime6	5356.799980104	Sum of GTIs [s]
ontime7	5356.799980104	Sum of GTIs [s]
l2events	214377	Number of level 2 events

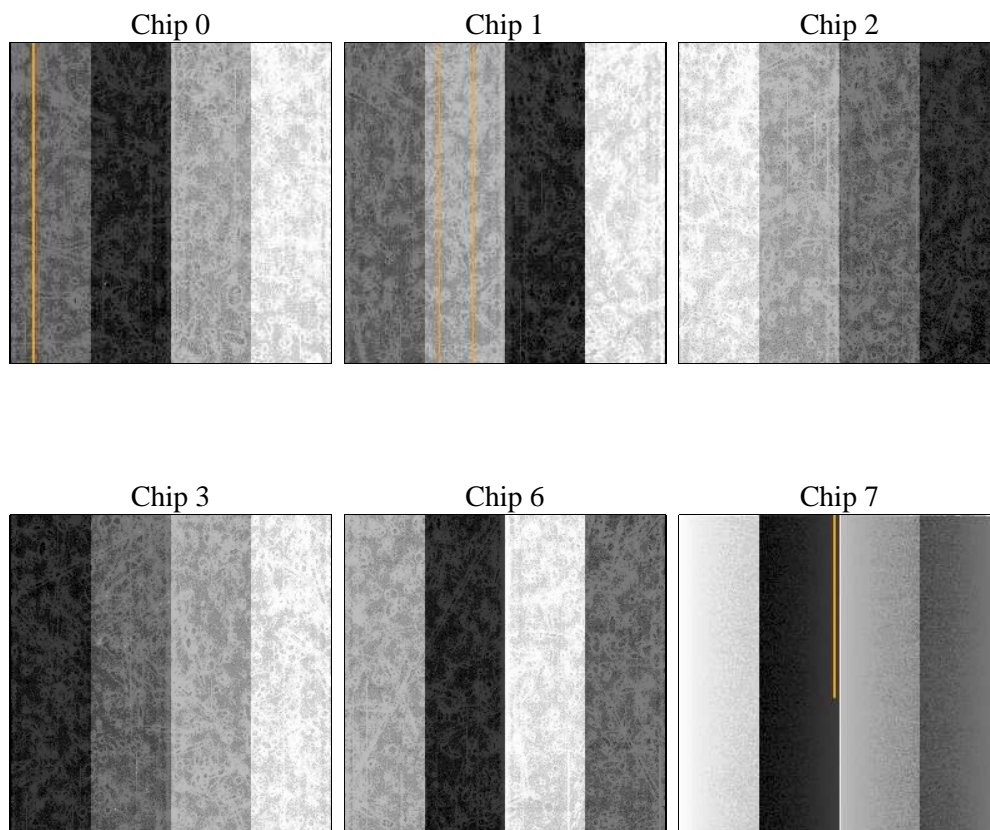
## 2 OBI

### 2.1 OBI

#### 2.1.1 Images



#### 2.1.2 Bias



### 2.1.3 Parameters

obi_num	0	Obi number	sched_exp_time	0.0	[s] Scheduled observation exposure time
ascdsver	8.4.3	Processing system revision	ontime	5356.799980104	Sum of GTIs [s]
caldsver	4.4.7	&#160	ontime0	5356.799980104	Sum of GTIs [s]
date	2012-02-02T07:14:27	Date and time of file creation	ontime1	5356.799980104	Sum of GTIs [s]
revision	2	Processing version of data	ontime2	5356.799980104	Sum of GTIs [s]
			ontime3	5356.799980104	Sum of GTIs [s]
			ontime6	5356.799980104	Sum of GTIs [s]
			ontime7	5356.799980104	Sum of GTIs [s]
			l1events	476973	Number of level 1 events

### 2.1.4 Events

	ccd 0	ccd 1	ccd 2	ccd 3	ccd 6	ccd 7		ccd 0	ccd 1	ccd 2	ccd 3	ccd 6	ccd 7
level 1 events	75747	73683	75502	77935	77277	96829	grade 0 events	17581	16319	18319	18630	16003	8704
rejected events	41521	39358	41647	43482	42395	41817		23%	22%	24%	23%	20%	8%
rejected %	54%	53%	55%	55%	54%	43%	grade 1 events	109	77	144	115	70	74
								0%	0%	0%	0%	0%	0%
							grade 2 events	6644	8016	5836	6161	8437	12532
								8%	10%	7%	7%	10%	12%
							grade 3 events	2288	2128	2250	2292	2046	4674
								3%	2%	2%	2%	2%	4%
							grade 4 events	2262	2125	2261	2339	2001	4335
								2%	2%	2%	3%	2%	4%
							grade 5 events	2295	2224	2168	2555	2184	5933
								3%	3%	2%	3%	2%	6%
							grade 6 events	5451	5737	5189	5031	6395	24767
								7%	7%	6%	6%	8%	25%
							grade 7 events	39117	37057	39335	40812	40141	35810
								51%	50%	52%	52%	51%	36%

## 2.2 Compared Parameters

Parameter	Planned	Actual	Parameter	Planned	Actual
Instrument	ACIS	ACIS	Obspar format version number	7	7
Detector	ACIS-012367	ACIS-012367	Obspar file type	PREDICTED	ACTUAL
Grating	NONE	NONE	Obspar update status	NONE	UPDATED
Data mode	FAINT	FAINT	Number of optional ACIS chips dropped	0	0
Observation mode	SECONDARY	SECONDARY	On-chip summing requested	N	N
[deg] Pointing RA	0	107.9720034117698	Subarray requested	NONE	NONE
[deg] Pointing Dec	0	45.4789704644999	Alternating exposures requested	N	N
[deg] Pointing Roll	0.0	194.0025138129564	[s] Primary exposure time	3.2	3.2
[mm] SIM focus pos	-1.429586	-1.428180813131781			
[mm] SIM defocus	0.1037507710433287	0.1051558262725154			
[mm] SIM translation stage pos	250.455976	250.466033080201			
[mm] SIM translation stage offset	0	-0.01005468664627074			
[s] Observation start time (MET)	411267773.413843	411267772.38884			
Observation start date	2011-01-13T01:02:53	2011-01-13T01:02:52			
[s] Observation end time (MET)	411278265.314385	411278264.28939			
Observation end date	2011-01-13T03:57:45	2011-01-13T03:57:44			
Read mode	TIMED	TIMED			

## 2.3 Star Slots

## 2.4 FID Slots

## A Summary

### A.1 Status

V&V Scientist	Joy Nichols
V&V Date (YYYY-MM-DD)	2012.02.02
V&V Edition	1
V&V Disposition and Status	OK
V&V Charge Time	5.356799980104

### A.2 Comments