

V&V Reference Report

L2 ASCDS Version : 8.4.3

Observation 55316 - L2 Version 2
Chandra X-Ray Center

L2 Processing Date : Feb 13 2012

Contents

1	Front	2
2	OBI	3
2.1	OBI	3
2.1.1	Images	3
2.1.2	Bias	3
2.1.3	Parameters	4
2.1.4	Events	4
2.2	Compared Parameters	5
2.3	Star Slots	6
2.4	FID Slots	6
A	Summary	7
A.1	Status	7
A.2	Comments	7

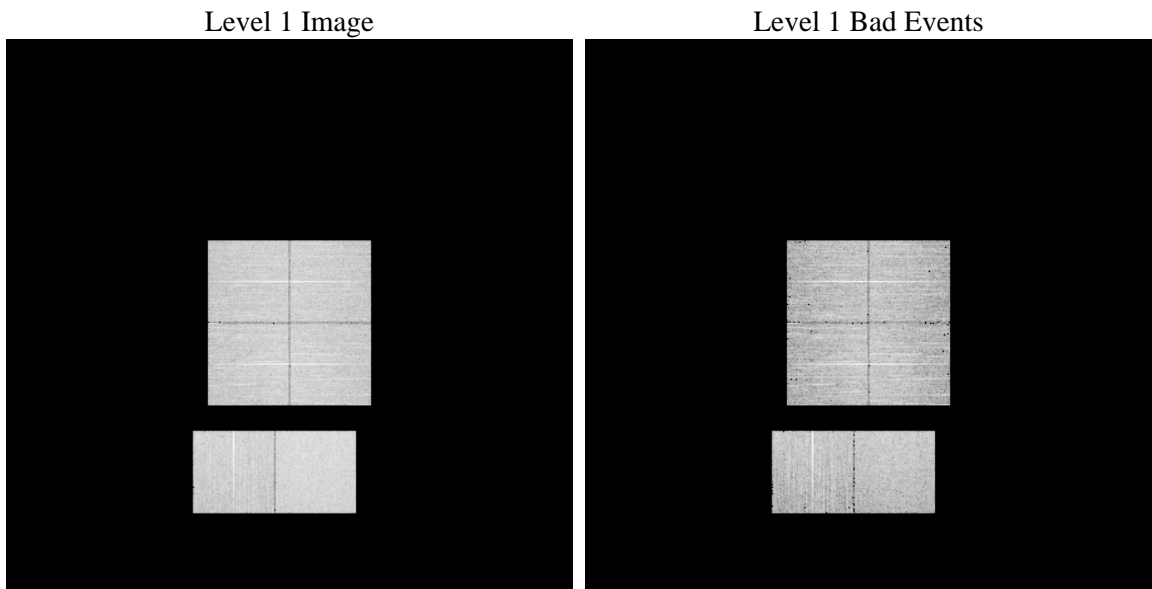
1 Front

seq_num	 	Sequence number
obs_id	55316	Observation id
title	ACIS-012367 diagnostics	Proposal title
observer	CHANDRA engineering request/realtime commanding	Principal investig
object	 	Source name
dtcycle	0	
cycle	P	events from which exps? Prim/Second/Both
ra_targ	0.0	Observer's specified target RA [deg]
dec_targ	0.0	Observer's specified target Dec [deg]
ra_nom	295.01514593984	Nominal RA [deg]
dec_nom	-47.973134860225	Nominal Dec [deg]
roll_nom	36.40088391133	Nominal Roll [deg]
revision	2	Processing version of data
ontime	8287.9999691844	Sum of GTIs [s]
livetime	8183.0523231401	Livetime [s]
ontime0	8287.9999691844	Sum of GTIs [s]
ontime1	8287.9999691844	Sum of GTIs [s]
ontime2	8287.9999691844	Sum of GTIs [s]
ontime3	8287.9999691844	Sum of GTIs [s]
ontime6	8287.9999691844	Sum of GTIs [s]
ontime7	8287.9999691844	Sum of GTIs [s]
l2events	302868	Number of level 2 events

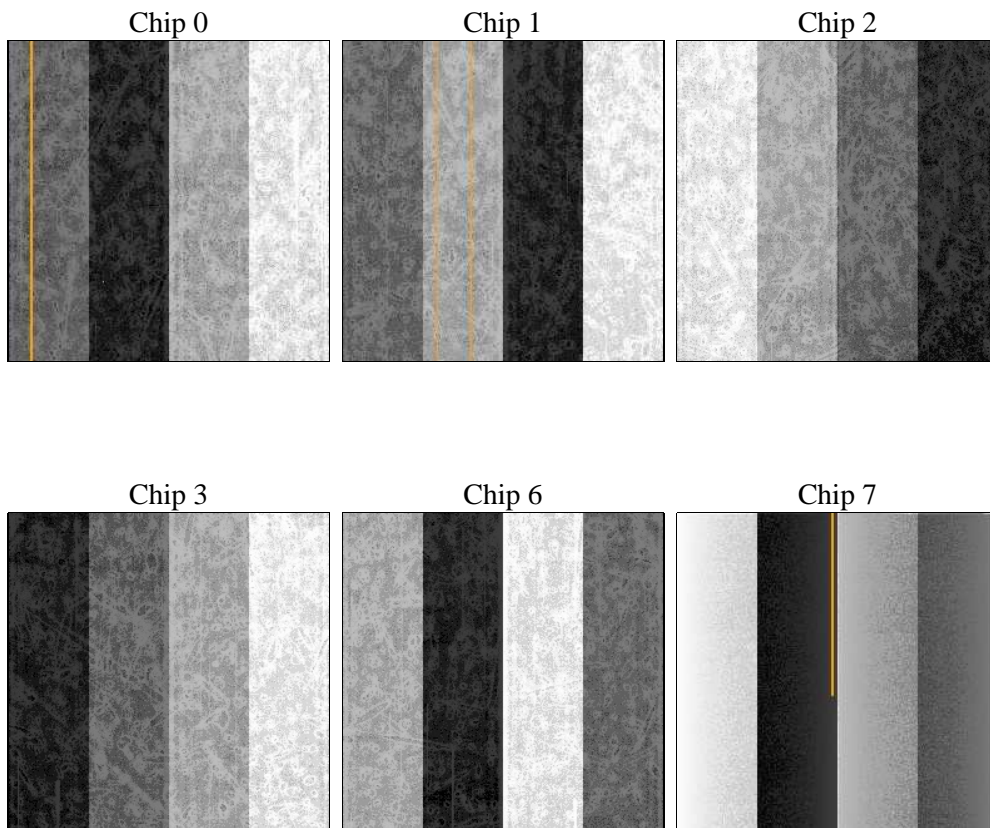
2 OBI

2.1 OBI

2.1.1 Images



2.1.2 Bias



2.1.3 Parameters

obi_num	0	Obi number	sched_exp_time	0.0	[s] Scheduled observation exposure time
ascdsver	8.4.3	Processing system revision	ontime	8287.9999691844	Sum of GTIs [s]
caldsver	4.4.7	 	ontime0	8287.9999691844	Sum of GTIs [s]
date	2012-02-13T14:21:45	Date and time of file creation	ontime1	8287.9999691844	Sum of GTIs [s]
revision	2	Processing version of data	ontime2	8287.9999691844	Sum of GTIs [s]
			ontime3	8287.9999691844	Sum of GTIs [s]
			ontime6	8287.9999691844	Sum of GTIs [s]
			ontime7	8287.9999691844	Sum of GTIs [s]
			l1events	640062	Number of level 1 events

2.1.4 Events

	ccd 0	ccd 1	ccd 2	ccd 3	ccd 6	ccd 7		ccd 0	ccd 1	ccd 2	ccd 3	ccd 6	ccd 7
level 1 events	98176	99309	101348	102845	105590	132794	grade 0 events	25391	24875	26101	26026	25980	13008
rejected events	49844	50560	53034	54462	55227	56519		25%	25%	25%	25%	24%	9%
rejected %	50%	50%	52%	52%	52%	42%	grade 1 events	155	114	162	171	119	110
								0%	0%	0%	0%	0%	0%
							grade 2 events	8926	9417	8327	8468	9195	16639
								9%	9%	8%	8%	8%	12%
							grade 3 events	3311	3283	3335	3362	3322	6672
								3%	3%	3%	3%	3%	5%
							grade 4 events	3199	3364	3295	3377	3215	6682
								3%	3%	3%	3%	3%	5%
							grade 5 events	3115	3360	2967	3581	3500	8747
								3%	3%	2%	3%	3%	6%
							grade 6 events	7505	7810	7256	7150	8651	33274
								7%	7%	7%	6%	8%	25%
							grade 7 events	46574	47086	49905	50710	51608	47662
								47%	47%	49%	49%	48%	35%

2.2 Compared Parameters

Parameter	Planned	Actual	Parameter	Planned	Actual
Instrument	ACIS	ACIS	Obspar format version number	7	7
Detector	ACIS-012367	ACIS-012367	Obspar file type	PREDICTED	ACTUAL
Grating	NONE	NONE	Obspar update status	NONE	UPDATED
Data mode	FAINT	FAINT	Number of optional ACIS chips dropped	0	0
Observation mode	SECONDARY	SECONDARY	On-chip summing requested	N	N
[deg] Pointing RA	0	295.0151459398438	Subarray requested	NONE	NONE
[deg] Pointing Dec	0	-47.97313486022467	Alternating exposures requested	N	N
[deg] Pointing Roll	0.0	36.40088391133026	[s] Primary exposure time	3.2	3.2
[mm] SIM focus pos	-1.429586	-1.428180813131781			
[mm] SIM defocus	0.1037507710433287	0.1051558262725154			
[mm] SIM translation stage pos	250.455976	250.466033080201			
[mm] SIM translation stage offset	0	-0.01005468664627074			
[s] Observation start time (MET)	425661039.410316	425661038.38531			
Observation start date	2011-06-28T15:10:39	2011-06-28T15:10:38			
[s] Observation end time (MET)	425674003.610992	425674002.58599			
Observation end date	2011-06-28T18:46:44	2011-06-28T18:46:42			
Read mode	TIMED	TIMED			

2.3 Star Slots

2.4 FID Slots

A Summary

A.1 Status

V&V Scientist	Jen Lauer
V&V Date (YYYY-MM-DD)	2012.02.14
V&V Edition	1
V&V Disposition and Status	OK
V&V Charge Time	8.2879999691844

A.2 Comments