

V&V Reference Report

L2 ASCDS Version : 8.4.3

Observation 55206 - L2 Version 3
Chandra X-Ray Center

L2 Processing Date : Feb 22 2012

Contents

1	Front	2
2	OBI	3
2.1	OBI	3
2.1.1	Images	3
2.1.2	Bias	3
2.1.3	Parameters	4
2.1.4	Events	4
2.2	Compared Parameters	5
2.3	Star Slots	6
2.4	FID Slots	6
A	Summary	7
A.1	Status	7
A.2	Comments	7

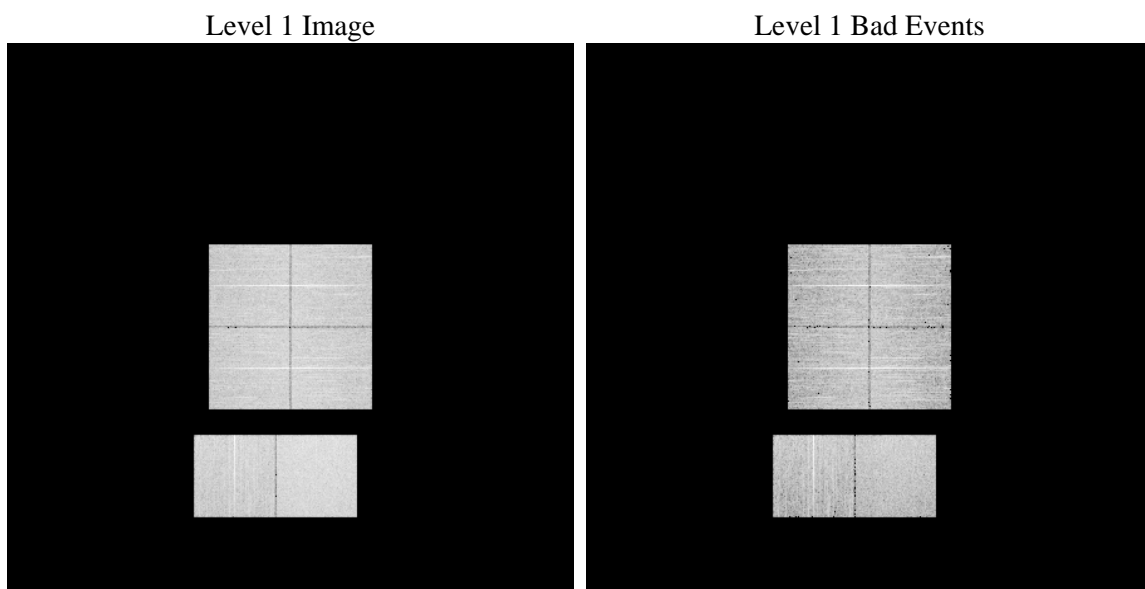
1 Front

seq_num	 	Sequence number
obs_id	55206	Observation id
title	ACIS-012367 diagnostics	Proposal title
observer	CHANDRA engineering request/realtime commanding	Principal investig
object	 	Source name
dtcycle	0	
cycle	P	events from which exps? Prim/Second/Both
ra_targ	0.0	Observer's specified target RA [deg]
dec_targ	0.0	Observer's specified target Dec [deg]
ra_nom	113.00823899986	Nominal RA [deg]
dec_nom	45.01708975873	Nominal Dec [deg]
roll_nom	64.839806990261	Nominal Roll [deg]
revision	3	Processing version of data
ontime	8286.6958619356	Sum of GTIs [s]
livetime	8181.7647292826	Livetime [s]
ontime0	8286.6548219323	Sum of GTIs [s]
ontime1	8286.613781929	Sum of GTIs [s]
ontime2	8286.5727419257	Sum of GTIs [s]
ontime3	8286.7369019389	Sum of GTIs [s]
ontime6	8286.5317019224	Sum of GTIs [s]
ontime7	8286.6958619356	Sum of GTIs [s]
l2events	307156	Number of level 2 events

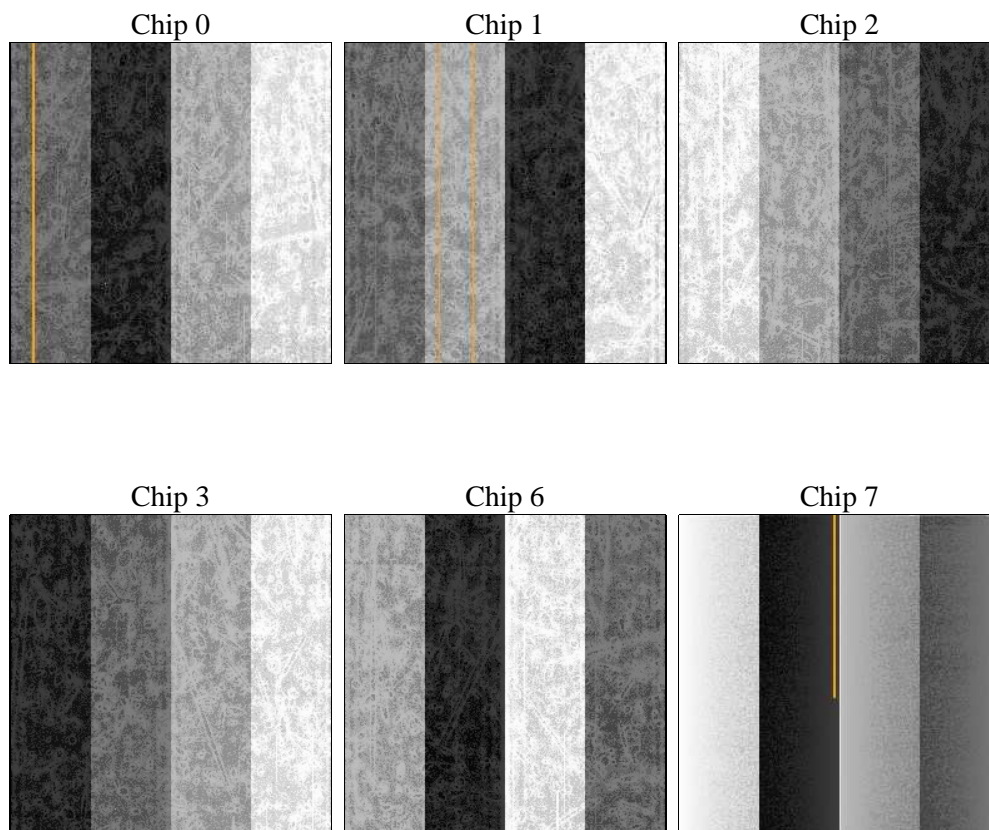
2 OBI

2.1 OBI

2.1.1 Images



2.1.2 Bias



2.1.3 Parameters

obi_num	0	Obi number	sched_exp_time	0.0	[s] Scheduled observation exposure time
ascdsver	8.4.3	Processing system revision	ontime	8286.6958619356	Sum of GTIs [s]
caldsver	4.4.8	 	ontime0	8286.6548219323	Sum of GTIs [s]
date	2012-02-22T13:33:47	Date and time of file creation	ontime1	8286.613781929	Sum of GTIs [s]
revision	3	Processing version of data	ontime2	8286.5727419257	Sum of GTIs [s]
			ontime3	8286.7369019389	Sum of GTIs [s]
			ontime6	8286.5317019224	Sum of GTIs [s]
			ontime7	8286.6958619356	Sum of GTIs [s]
			l1events	654368	Number of level 1 events

2.1.4 Events

	ccd 0	ccd 1	ccd 2	ccd 3	ccd 6	ccd 7		ccd 0	ccd 1	ccd 2	ccd 3	ccd 6	ccd 7
level 1 events	99940	101076	102645	106319	105895	138493	grade 0 events	25398	25142	26104	26246	25980	13566
rejected events	51272	52254	53936	57308	55134	59219		25%	24%	25%	24%	24%	9%
rejected %	51%	51%	52%	53%	52%	42%	grade 1 events	153	137	166	175	134	126
								0%	0%	0%	0%	0%	0%
							grade 2 events	9042	9411	8591	8536	9295	17151
								9%	9%	8%	8%	8%	12%
							grade 3 events	3331	3178	3329	3489	3411	7148
								3%	3%	3%	3%	3%	5%
							grade 4 events	3167	3190	3357	3387	3299	7239
								3%	3%	3%	3%	3%	5%
							grade 5 events	3446	3395	3138	3849	3785	9412
								3%	3%	3%	3%	3%	6%
							grade 6 events	7730	7901	7328	7353	8776	34170
								7%	7%	7%	6%	8%	24%
							grade 7 events	47673	48722	50632	53284	51215	49681
								47%	48%	49%	50%	48%	35%

2.2 Compared Parameters

Parameter	Planned	Actual
Instrument	ACIS	ACIS
Detector	ACIS-012367	ACIS-012367
Grating	NONE	NONE
Data mode	FAINT	FAINT
Observation mode	SECONDARY	SECONDARY
[deg] Pointing RA	0	113.0082389998628
[deg] Pointing Dec	0	45.01708975872967
[deg] Pointing Roll	0.0	64.83980699026132
[mm] SIM focus pos	-1.429586	-1.428180813131781
[mm] SIM defocus	0.1037507710433287	0.1051558262725154
[mm] SIM translation stage pos	250.455976	250.466033080201
[mm] SIM translation stage offset	0	-0.01005468664627074
[s] Observation start time (MET)	431572612.047424	431572611.0224
Observation start date	2011-09-05T01:16:52	2011-09-05T01:16:51
[s] Observation end time (MET)	431582466.397942	431582465.37291
Observation end date	2011-09-05T04:01:06	2011-09-05T04:01:05
Read mode	TIMED	TIMED

Parameter	Planned	Actual
Obspar format version number	7	7
Obspar file type	PREDICTED	ACTUAL
Obspar update status	NONE	UPDATED
Number of optional ACIS chips dropped	0	0
On-chip summing requested	N	N
Subarray requested	NONE	NONE
Alternating exposures requested	N	N
[s] Primary exposure time	3.2	3.2

2.3 Star Slots

2.4 FID Slots

A Summary

A.1 Status

V&V Scientist	Jen Lauer
V&V Date (YYYY-MM-DD)	2012.02.23
V&V Edition	1
V&V Disposition and Status	OK
V&V Charge Time	8.2866958619356

A.2 Comments

A spatial region of the original bias map for CCD = 1 suffered from anomalously high data values. Pixels in the event data that were bias-corrected by one of the original affected bias pixels may have an apparent energy shift. While the change in energy is expected to be small (~ 20 eV), it depends on many parameters that have not yet been fully explored for this bias anomaly. The bias map for CCD = 1 has been reconstructed for this processing to remove this anomaly using scaled data from a comparable bias map from another observation. The pixels affected by the anomaly are bounded by chip coords:
(665,1),(688,1),(688,85),(665,96)