

V&V Reference Report

L2 ASCDS Version : 8.4.5

Observation 54366 - L2 Version 1
Chandra X-Ray Center

L2 Processing Date : Sep 1 2012

Contents

1	Front	2
2	OBI	3
2.1	OBI	3
2.1.1	Images	3
2.1.2	Bias	3
2.1.3	Parameters	4
2.1.4	Events	4
2.2	Compared Parameters	5
2.3	Star Slots	6
2.4	FID Slots	6
A	Summary	7
A.1	Status	7
A.2	Comments	7

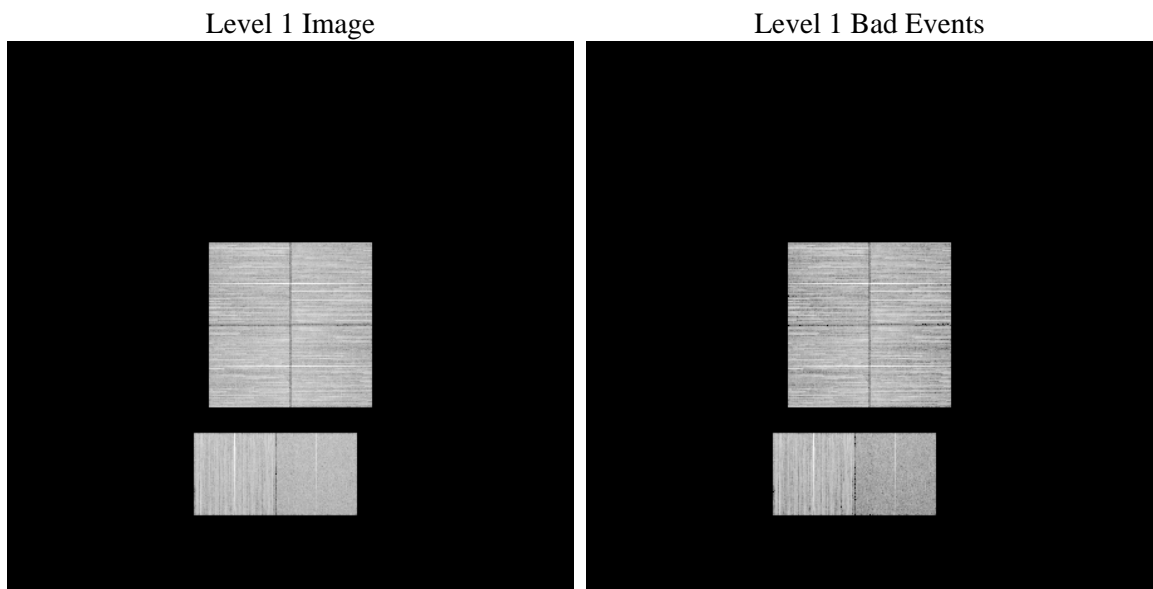
1 Front

seq_num	 	Sequence number
obs_id	54366	Observation id
title	ACIS-012367 diagnostics	Proposal title
observer	CHANDRA engineering request/realtime commanding	Principal investig
object	 	Source name
dtcycle	0	
cycle	P	events from which exps? Prim/Second/Both
ra_targ	0.0	Observer's specified target RA [deg]
dec_targ	0.0	Observer's specified target Dec [deg]
ra_nom	295.18865404598	Nominal RA [deg]
dec_nom	-31.83253675295	Nominal Dec [deg]
roll_nom	300.21859400587	Nominal Roll [deg]
revision	1	Processing version of data
ontime	8175.9999696016	Sum of GTIs [s]
livetime	8072.4705349904	Livetime [s]
ontime0	8175.9999696016	Sum of GTIs [s]
ontime1	8175.9999696016	Sum of GTIs [s]
ontime2	8175.9999696016	Sum of GTIs [s]
ontime3	8175.9999696016	Sum of GTIs [s]
ontime6	8175.9999696016	Sum of GTIs [s]
ontime7	8175.9999696016	Sum of GTIs [s]
l2events	243504	Number of level 2 events

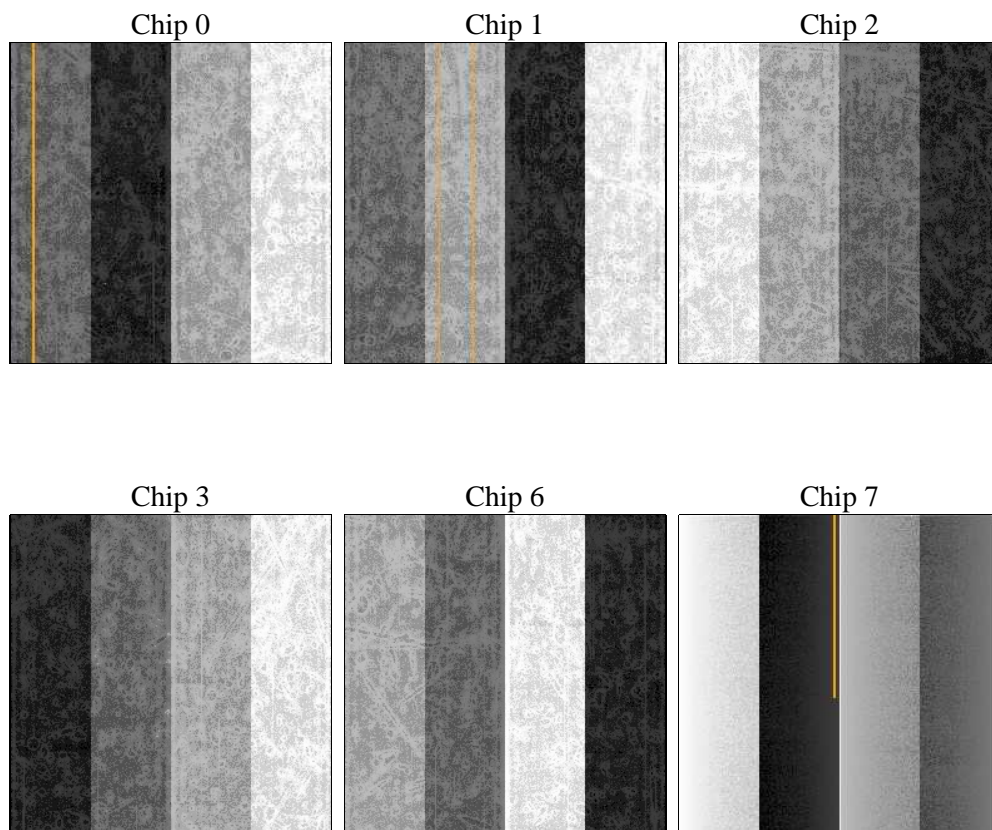
2 OBI

2.1 OBI

2.1.1 Images



2.1.2 Bias



2.1.3 Parameters

obi_num	0	Obi number	sched_exp_time	0.0	[s] Scheduled observation exposure time
ascdsver	8.4.5	Processing system revision	ontime	8175.9999696016	Sum of GTIs [s]
caldsver	4.5.1.1	 	ontime0	8175.9999696016	Sum of GTIs [s]
date	2012-09-01T19:43:24	Date and time of file creation	ontime1	8175.9999696016	Sum of GTIs [s]
revision	1	Processing version of data	ontime2	8175.9999696016	Sum of GTIs [s]
			ontime3	8175.9999696016	Sum of GTIs [s]
			ontime6	8175.9999696016	Sum of GTIs [s]
			ontime7	8175.9999696016	Sum of GTIs [s]
			l1events	987887	Number of level 1 events

2.1.4 Events

	ccd 0	ccd 1	ccd 2	ccd 3	ccd 6	ccd 7		ccd 0	ccd 1	ccd 2	ccd 3	ccd 6	ccd 7
level 1 events	161960	173104	175779	166984	173770	136290	grade 0 events	19898	19498	20488	20361	20169	10200
rejected events	124023	134577	137608	128685	133962	71098		12%	11%	11%	12%	11%	7%
rejected %	76%	77%	78%	77%	77%	52%	grade 1 events	114	73	116	128	95	84
								0%	0%	0%	0%	0%	0%
							grade 2 events	7329	8031	7278	7379	7926	16004
								4%	4%	4%	4%	4%	11%
							grade 3 events	2591	2553	2615	2656	2655	5589
								1%	1%	1%	1%	1%	4%
							grade 4 events	2615	2583	2681	2770	2663	5563
								1%	1%	1%	1%	1%	4%
							grade 5 events	3016	3100	2860	3237	3220	8108
								1%	1%	1%	1%	1%	5%
							grade 6 events	6076	6416	5702	5709	7051	28734
								3%	3%	3%	3%	4%	21%
							grade 7 events	120321	130850	134039	124744	129991	62008
								74%	75%	76%	74%	74%	45%

2.2 Compared Parameters

Parameter	Planned	Actual
Instrument	ACIS	ACIS
Detector	ACIS-012367	ACIS-012367
Grating	NONE	NONE
Data mode	FAINT	FAINT
Observation mode	SECONDARY	SECONDARY
[deg] Pointing RA	0	295.1886540459758
[deg] Pointing Dec	0	-31.83253675294998
[deg] Pointing Roll	0.0	300.2185940058692
SIM focus pos (mm)	-1.4281808131	-1.4281808131
[mm] SIM defocus	0.1051557500557434	0.1051557500557434
SIM translation stage pos (mm)	250.4660330802	250.4660330802
[mm] SIM translation stage offset	-0.01005726120527584	-0.01005726120527584
[s] Observation start time (MET)	462878871.76433	462878871.76433
Observation start date	2012-09-01T09:27:52	2012-09-01T09:27:51
[s] Observation end time (MET)	462888420.915652	462888420.915652
Observation end date	2012-09-01T12:07:01	2012-09-01T12:07:00
Read mode	TIMED	TIMED

Parameter	Planned	Actual
Obspar format version number	7	7
Obspar file type	PREDICTED	ACTUAL
Obspar update status	OVERRIDE	OVERRIDE
Number of optional ACIS chips dropped	0	0
On-chip summing requested	N	N
Subarray requested	NONE	NONE
Alternating exposures requested	N	N
[s] Primary exposure time	3.2	3.2

2.3 Star Slots

2.4 FID Slots

A Summary

A.1 Status

V&V Scientist	Joy Nichols
V&V Date (YYYY-MM-DD)	2012.09.04
V&V Edition	1
V&V Disposition and Status	OK
V&V Charge Time	8.1759999696016

A.2 Comments