

V&V Reference Report

L2 ASCDS Version : 8.5.1.1

Observation 5406 - L2 Version 3
Chandra X-Ray Center

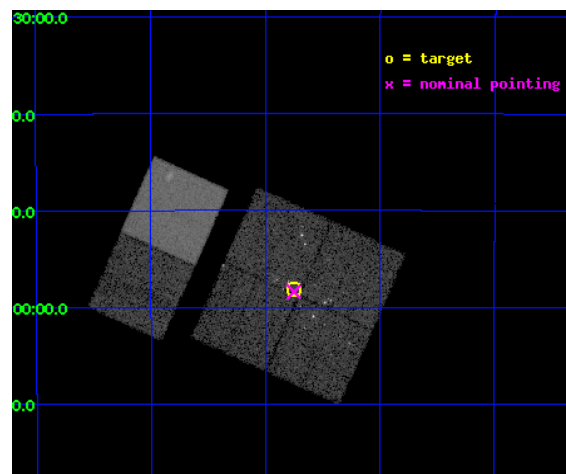
L2 Processing Date : Dec 27 2012

Contents

| | | |
|----------|-------------------------------|-----------|
| 1 | Front | 2 |
| 2 | OBI | 3 |
| 2.1 | OBI | 3 |
| 2.1.1 | Images | 3 |
| 2.1.2 | Bias | 3 |
| 2.1.3 | Parameters | 4 |
| 2.1.4 | Events | 4 |
| 2.2 | Compared Parameters | 5 |
| 2.3 | Aspect | 6 |
| 2.4 | Star Slots | 9 |
| 2.4.1 | Slot 3 | 9 |
| 2.4.2 | Slot 4 | 10 |
| 2.4.3 | Slot 5 | 11 |
| 2.4.4 | Slot 6 | 12 |
| 2.4.5 | Slot 7 | 13 |
| 2.5 | FID Slots | 14 |
| 2.5.1 | Slot 0 | 14 |
| 2.5.2 | Slot 1 | 15 |
| 2.5.3 | Slot 2 | 16 |
| A | Summary | 17 |
| A.1 | Status | 17 |
| A.2 | Comments | 17 |

1 Front

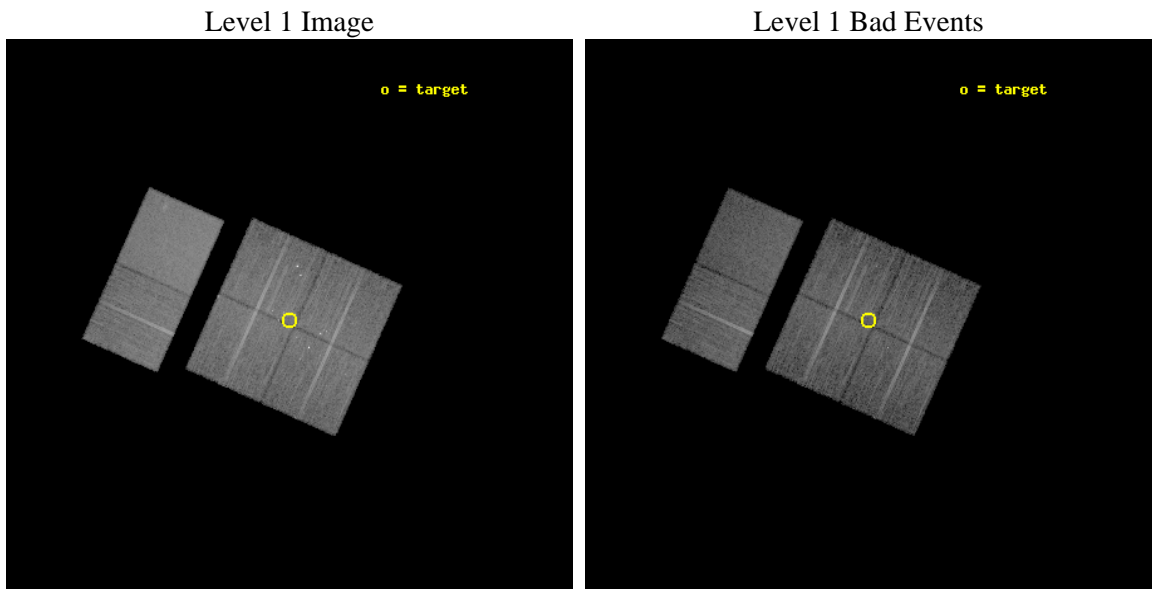
| | | |
|----------|--|---|
| seq_num | 200340 | Sequence number |
| obs_id | 5406 | Observation id |
| title | Simultaneous X-ray and Radio Monitoring of YSO Activity in the Coronet Cluster | Proposal title |
| observer | Dr Jan Forbrich | Principal investigator |
| object | Coronet Cluster | Source name |
| dtcycle | 0 | |
| cycle | P | events from which exps? Prim/Second/Both |
| ra_targ | 285.4375 | Observer's specified target RA [deg] |
| dec_targ | -36.969167 | Observer's specified target Dec [deg] |
| ra_nom | 285.4376621777 | Nominal RA [deg] |
| dec_nom | -36.973793065712 | Nominal Dec [deg] |
| roll_nom | 294.15814897388 | Nominal Roll [deg] |
| revision | 3 | Processing version of data |
| ontime | 14754.047110528 | Sum of GTIs [s] |
| livetime | 14567.222482194 | Livetime [s] |
| ontime0 | 14753.923990548 | Sum of GTIs [s] |
| ontime1 | 14753.965030521 | Sum of GTIs [s] |
| ontime2 | 14754.006050617 | Sum of GTIs [s] |
| ontime3 | 14754.047110528 | Sum of GTIs [s] |
| ontime6 | 14754.129170626 | Sum of GTIs [s] |
| ontime7 | 14754.088130623 | Sum of GTIs [s] |
| l2events | 123989 | Number of level 2 events |



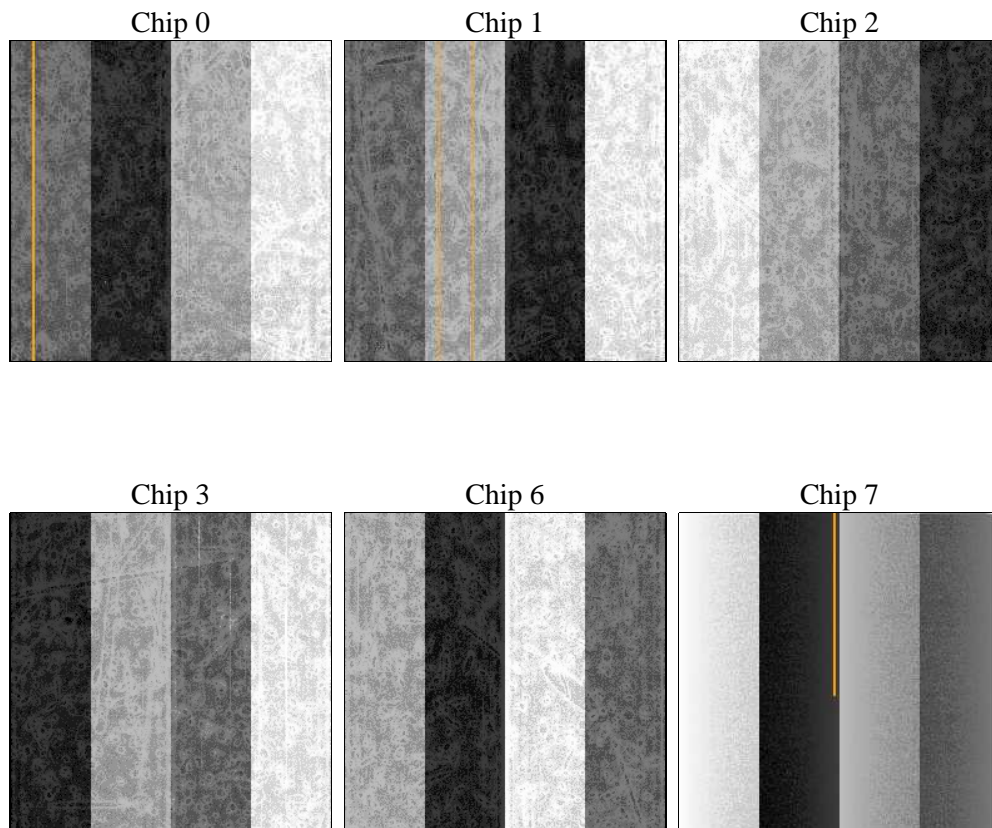
2 OBI

2.1 OBI

2.1.1 Images



2.1.2 Bias



2.1.3 Parameters

| | | | | | |
|----------|---------------------|--------------------------------|----------------|-----------------|---|
| obi_num | 0 | Obi number | sched_exp_time | 15000.000000 | [s] Scheduled observation exposure time |
| ascdsver | 8.5.1.1 | Processing system revision | ontime | 14754.047110528 | Sum of GTIs [s] |
| caldsver | 4.5.5 | | ontime0 | 14753.923990548 | Sum of GTIs [s] |
| date | 2012-12-27T04:27:58 | Date and time of file creation | ontime1 | 14753.965030521 | Sum of GTIs [s] |
| revision | 3 | Processing version of data | ontime2 | 14754.006050617 | Sum of GTIs [s] |
| | | | ontime3 | 14754.047110528 | Sum of GTIs [s] |
| | | | ontime6 | 14754.129170626 | Sum of GTIs [s] |
| | | | ontime7 | 14754.088130623 | Sum of GTIs [s] |
| | | | l1events | 671728 | Number of level 1 events |

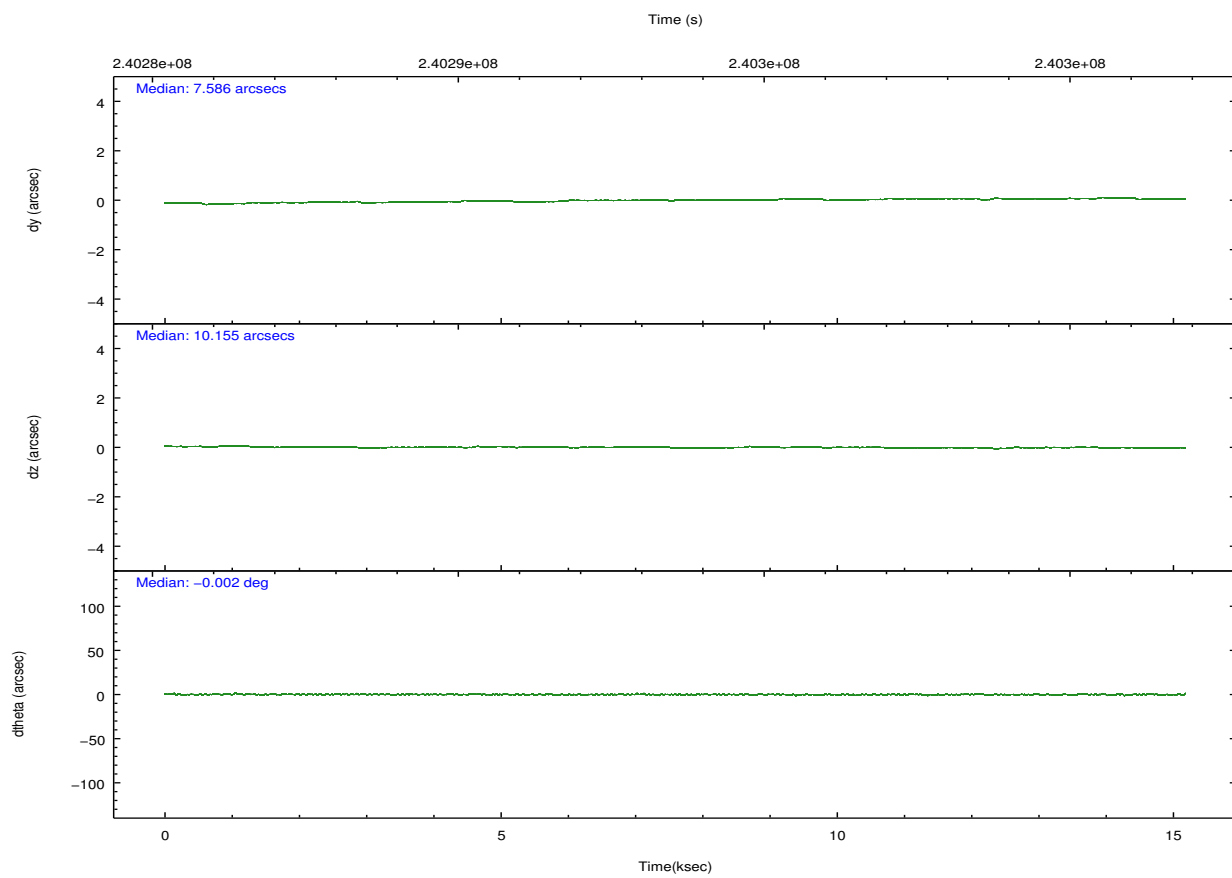
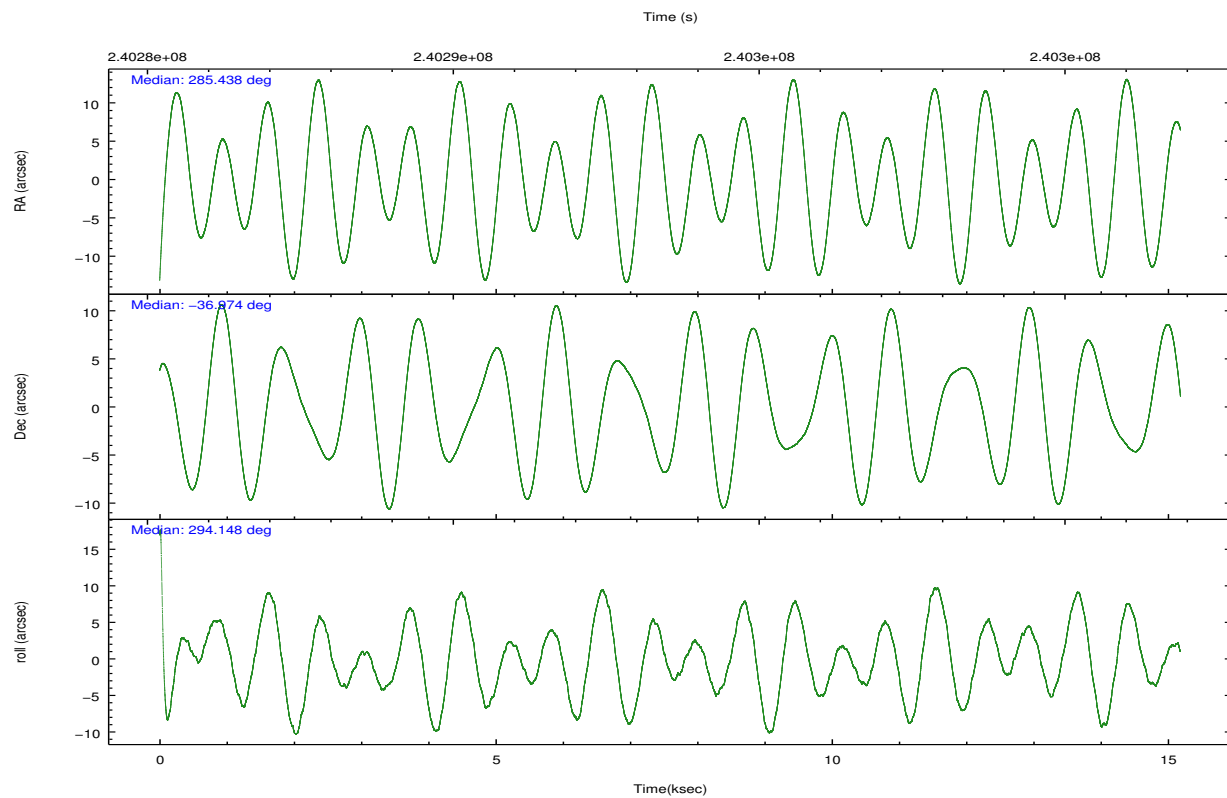
2.1.4 Events

| | ccd 0 | ccd 1 | ccd 2 | ccd 3 | ccd 6 | ccd 7 | | ccd 0 | ccd 1 | ccd 2 | ccd 3 | ccd 6 | ccd 7 |
|-----------------|--------|--------|--------|--------|--------|--------|----------------|-------|-------|-------|-------|-------|-------|
| level 1 events | 100540 | 100246 | 105433 | 108749 | 111307 | 145453 | grade 0 events | 8616 | 6659 | 5683 | 8681 | 4833 | 5530 |
| rejected events | 83668 | 84829 | 92561 | 92240 | 98568 | 84814 | | 8% | 6% | 5% | 7% | 4% | 3% |
| rejected % | 83% | 84% | 87% | 84% | 88% | 58% | grade 1 events | 291 | 66 | 65 | 113 | 63 | 133 |
| | | | | | | | | 0% | 0% | 0% | 0% | 0% | 0% |
| | | | | | | | grade 2 events | 3138 | 3236 | 2585 | 2818 | 2794 | 12121 |
| | | | | | | | | 3% | 3% | 2% | 2% | 2% | 8% |
| | | | | | | | grade 3 events | 1442 | 1400 | 1241 | 1310 | 1215 | 5299 |
| | | | | | | | | 1% | 1% | 1% | 1% | 1% | 3% |
| | | | | | | | grade 4 events | 1318 | 1358 | 1159 | 1412 | 1223 | 5259 |
| | | | | | | | | 1% | 1% | 1% | 1% | 1% | 3% |
| | | | | | | | grade 5 events | 4514 | 4570 | 4131 | 4884 | 5210 | 14138 |
| | | | | | | | | 4% | 4% | 3% | 4% | 4% | 9% |
| | | | | | | | grade 6 events | 2365 | 2768 | 2219 | 2294 | 2679 | 32452 |
| | | | | | | | | 2% | 2% | 2% | 2% | 2% | 22% |
| | | | | | | | grade 7 events | 78856 | 80189 | 88350 | 87237 | 93290 | 70521 |
| | | | | | | | | 78% | 79% | 83% | 80% | 83% | 48% |

2.2 Compared Parameters

| Parameter | Planned | Actual | Parameter | Planned | Actual |
|-----------------------------------|---------------------|-----------------------|---------------------------------------|-----------|---------|
| Instrument | ACIS | ACIS | Obspar format version number | 7 | 7 |
| Detector | ACIS-012367 | ACIS-012367 | Obspar file type | PREDICTED | ACTUAL |
| Grating | NONE | NONE | Obspar update status | NONE | UPDATED |
| Data mode | FAINT | FAINT | Number of optional ACIS chips dropped | 0 | 0 |
| Observation mode | POINTING | POINTING | On-chip summing requested | N | N |
| [deg] Pointing RA | 285.409759 | 285.4376621777723 | Subarray requested | NONE | NONE |
| [deg] Pointing Dec | -36.957857 | -36.97379306571178 | Alternating exposures requested | N | N |
| [deg] Pointing Roll | 293.932652 | 294.1581489738785 | [s] Primary exposure time | 0.000000 | 3.2 |
| [mm] SIM focus pos | -0.782348 | -0.7809083437167272 | | | |
| [mm] SIM defocus | 0 | 0.001439871863259334 | | | |
| [mm] SIM translation stage pos | -233.592463 | -233.5874344608287 | | | |
| [mm] SIM translation stage offset | 0 | -0.005018542100998502 | | | |
| [s] Observation start time (MET) | 240286130.184000 | 240285080.92985 | | | |
| Observation start date | 2005-08-13T02:07:46 | 2005-08-13T01:51:20 | | | |
| [s] Observation end time (MET) | 240301130.184000 | 240302072.35563 | | | |
| Observation end date | 2005-08-13T06:17:46 | 2005-08-13T06:34:32 | | | |
| Read mode | TIMED | TIMED | | | |

2.3 Aspect

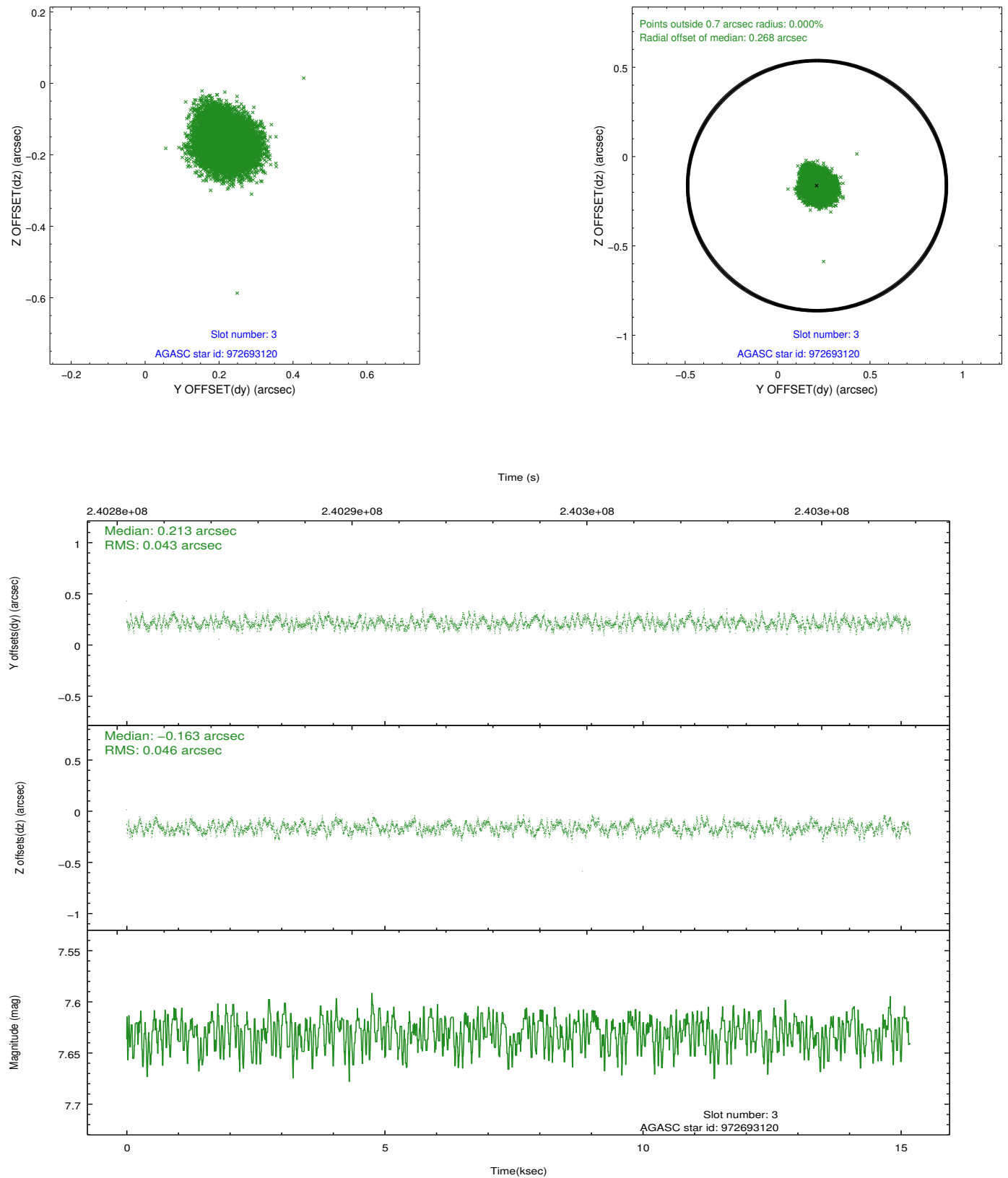


Slot Statistics

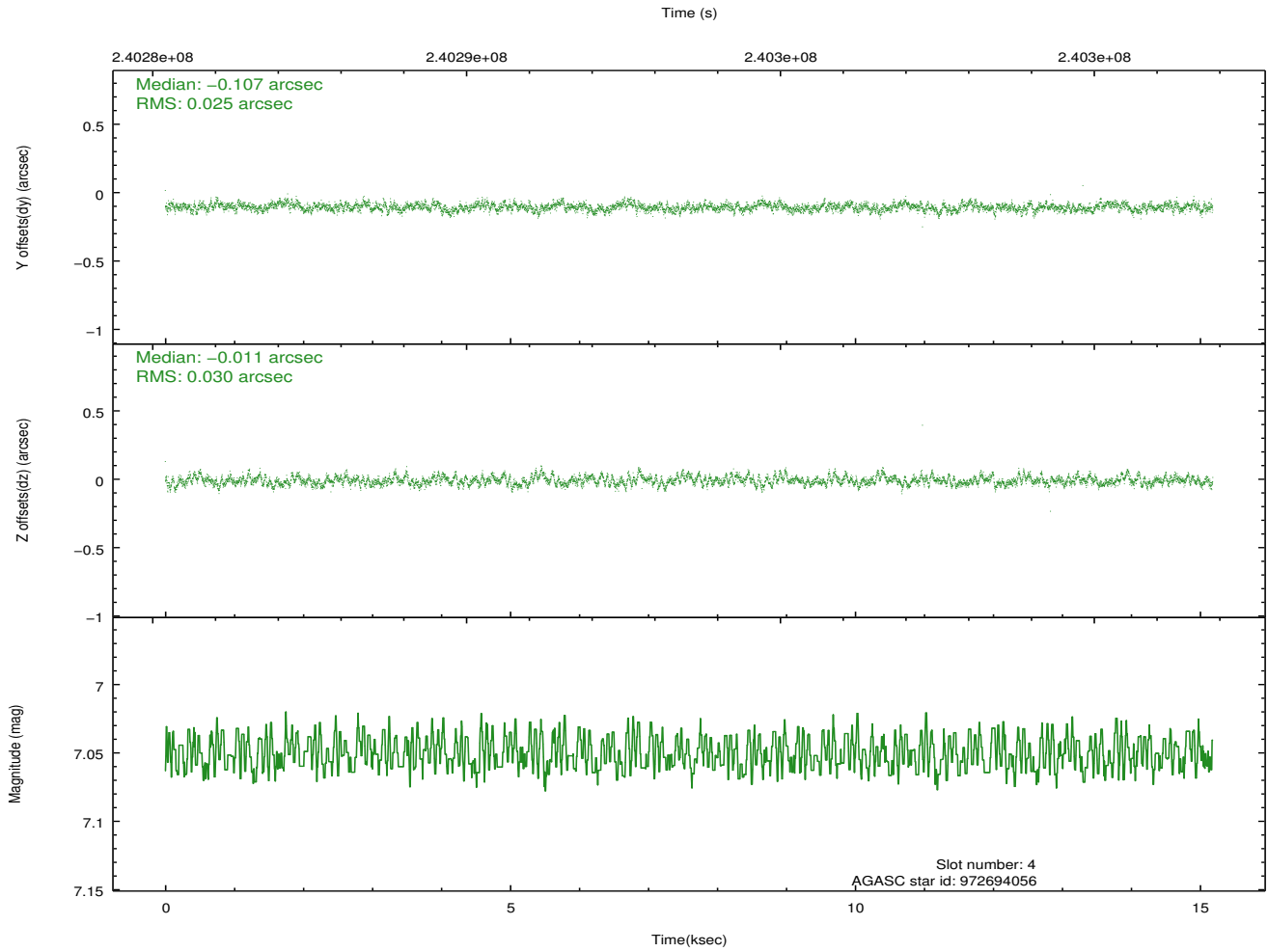
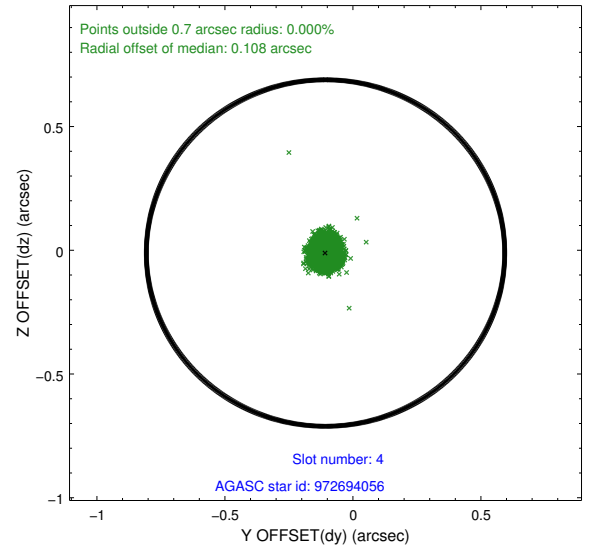
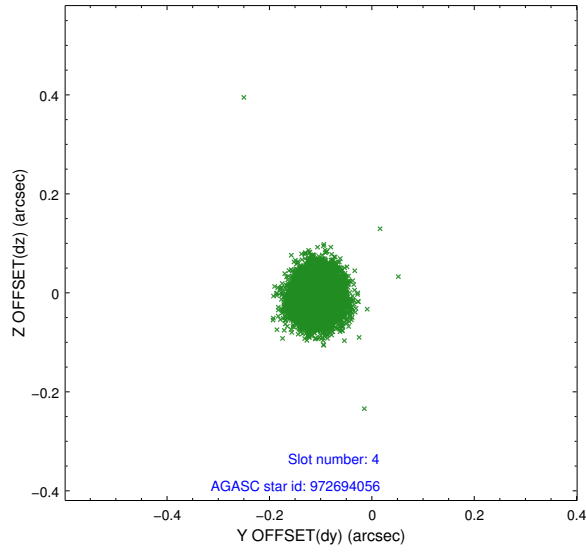
| slot | status | id | mag | n_pts | med_dy | med_dz | dr1 | dr2 | ra | dec | mean_y | mean_z |
|------|--------|------------|------|-------|--------|--------|-------|-------|------------|------------|----------|----------|
| 0 | FID | ACIS-I-1 | 7.24 | 3704 | 0.018 | 0.002 | 0.007 | 0.011 | 0.000000 | 0.000000 | 932.11 | -833.63 |
| 1 | FID | ACIS-I-5 | 7.23 | 3704 | -0.178 | 0.032 | 0.006 | 0.012 | 0.000000 | 0.000000 | -1816.03 | 1063.74 |
| 2 | FID | ACIS-I-6 | 7.25 | 3704 | 0.068 | 0.036 | 0.007 | 0.012 | 0.000000 | 0.000000 | 397.38 | 1708.59 |
| 3 | GUIDE | 972693120 | 7.63 | 7408 | 0.213 | -0.163 | 0.069 | 0.103 | 285.412210 | -36.890704 | -217.53 | 104.23 |
| 4 | GUIDE | 972694056 | 7.05 | 7408 | -0.107 | -0.011 | 0.041 | 0.067 | 285.682787 | -36.657985 | -665.80 | 1157.98 |
| 5 | GUIDE | 1037567144 | 8.74 | 7404 | 0.008 | 0.030 | 0.069 | 0.113 | 284.940440 | -37.605390 | 1591.46 | -2170.11 |
| 6 | GUIDE | 972689192 | 8.92 | 7405 | -0.104 | 0.053 | 0.082 | 0.133 | 284.589186 | -37.133486 | -367.28 | -2413.57 |
| 7 | GUIDE | 972816680 | 9.15 | 7401 | -0.012 | 0.088 | 0.089 | 0.140 | 286.054324 | -36.904693 | 583.51 | 1770.84 |

2.4 Star Slots

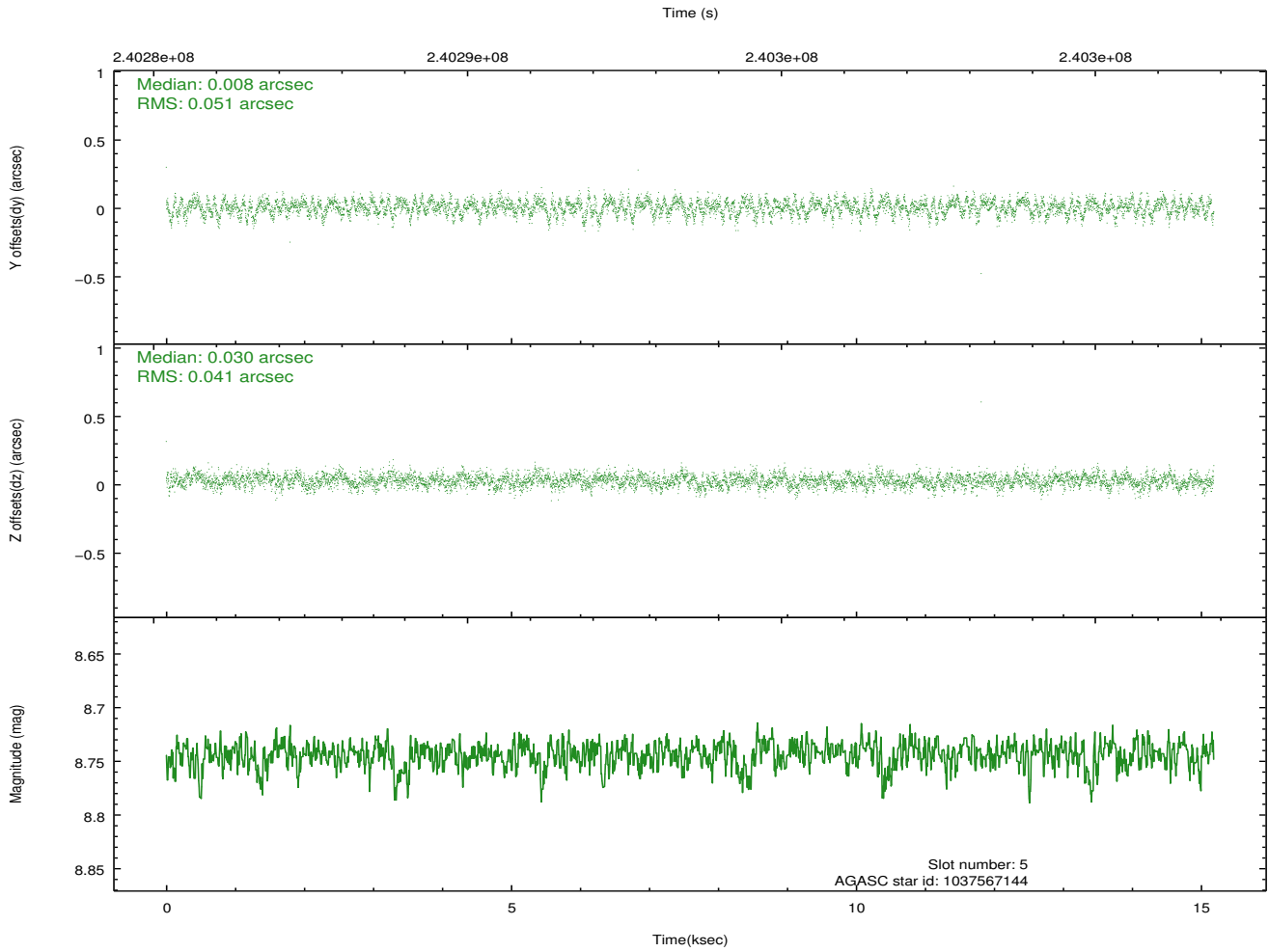
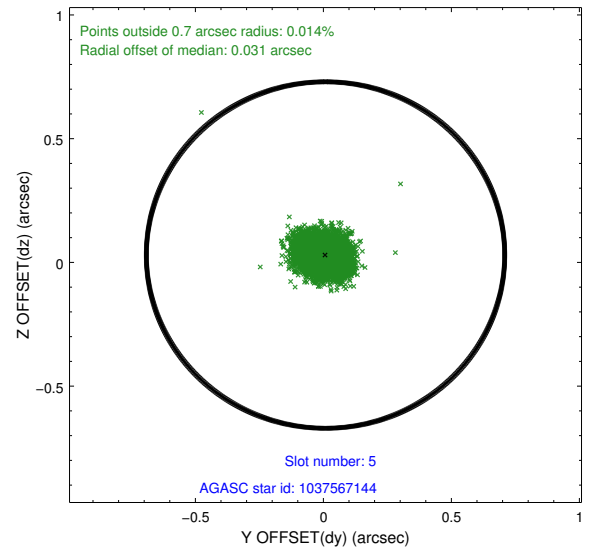
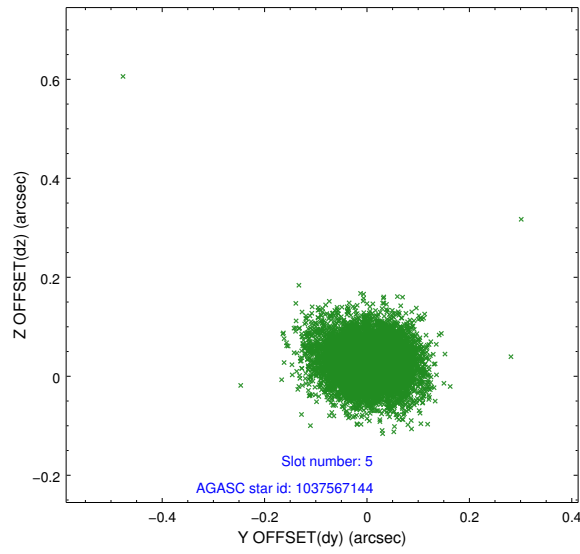
2.4.1 Slot 3



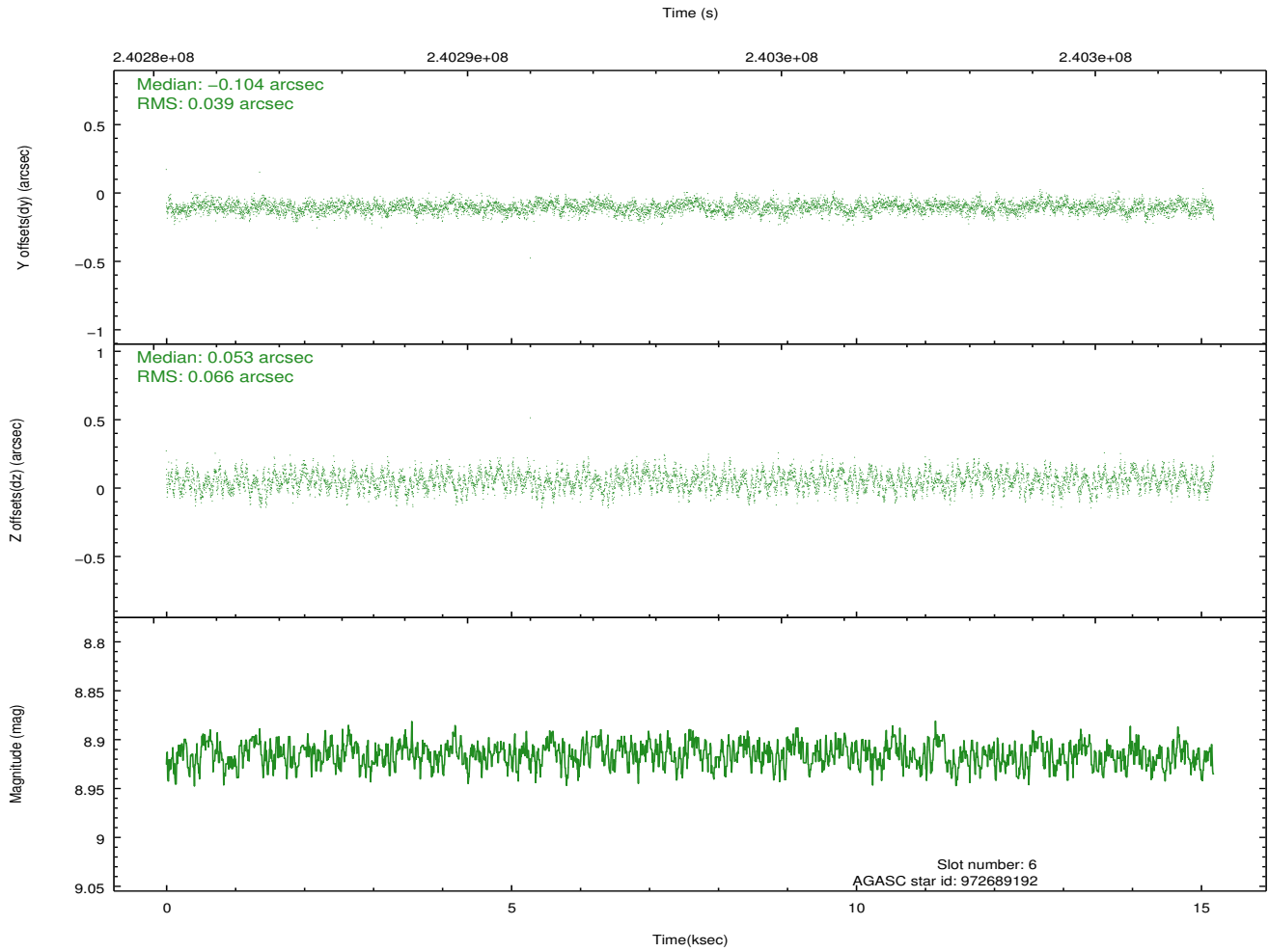
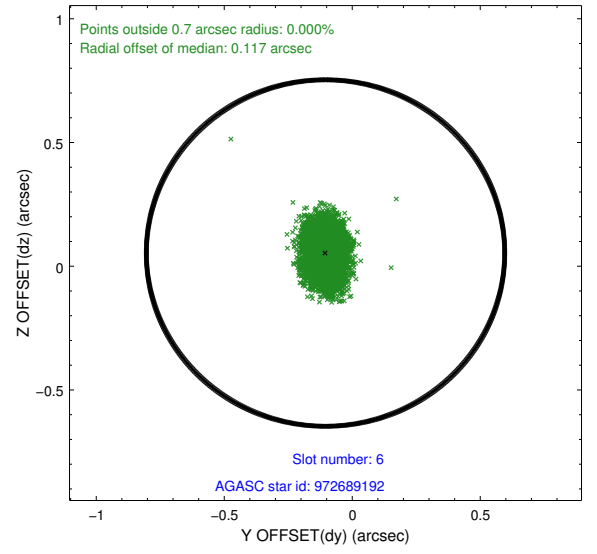
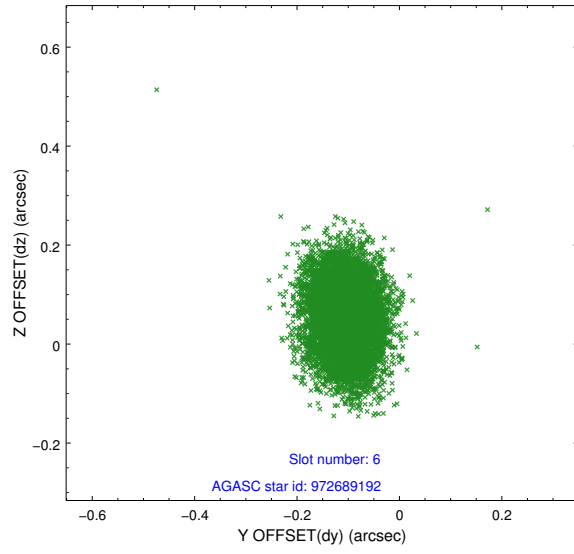
2.4.2 Slot 4



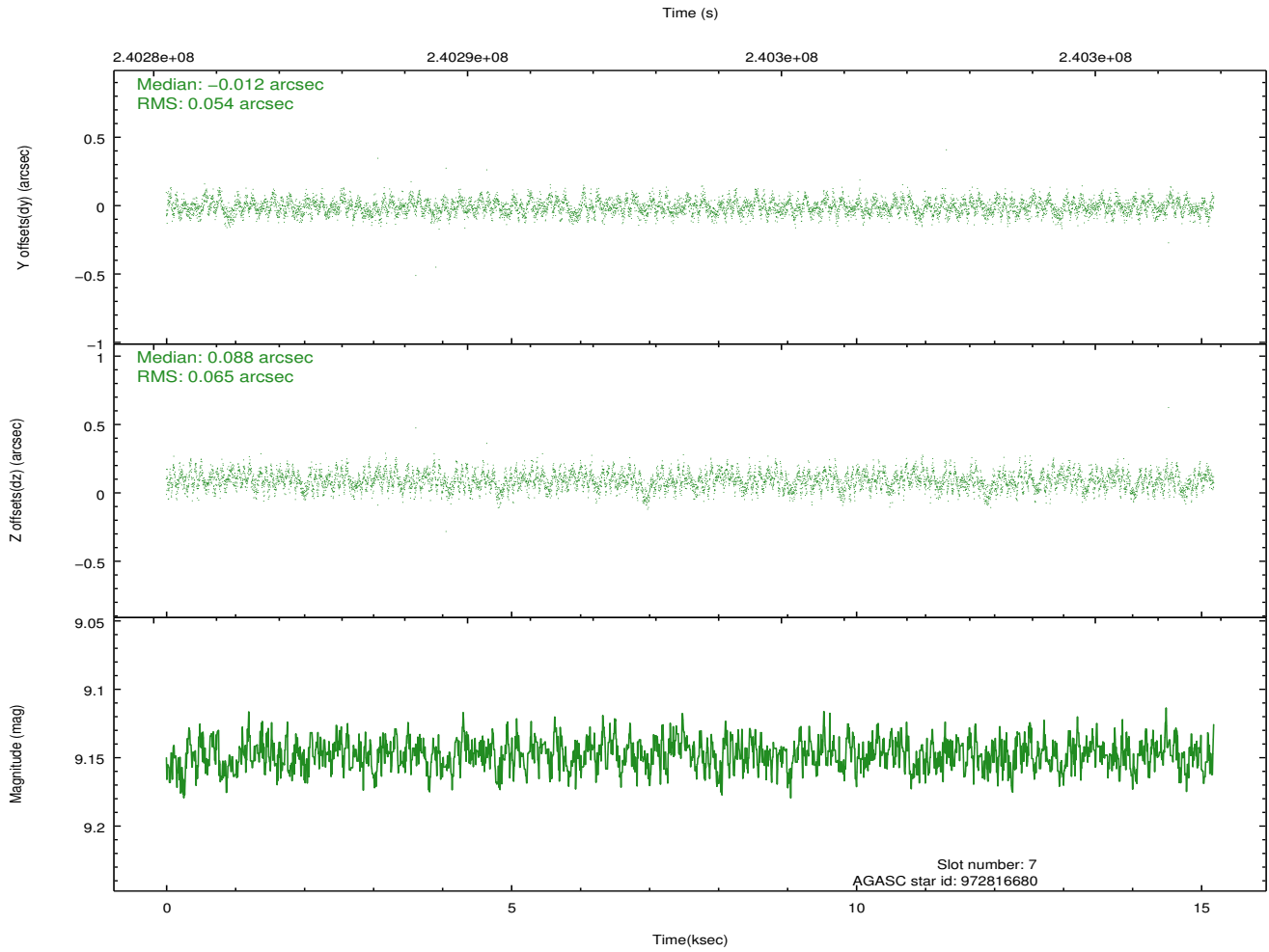
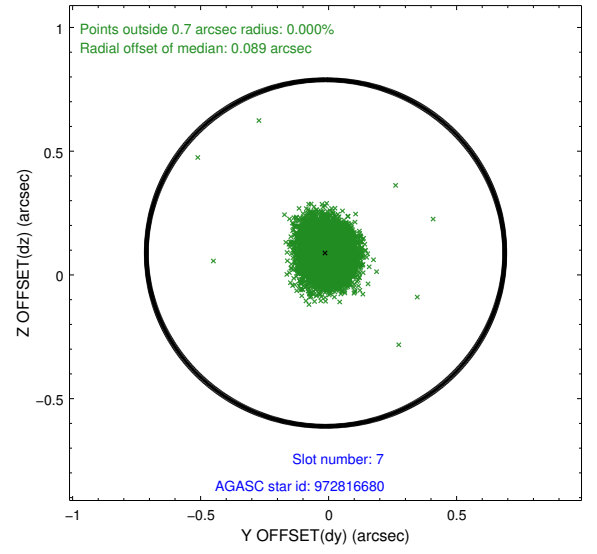
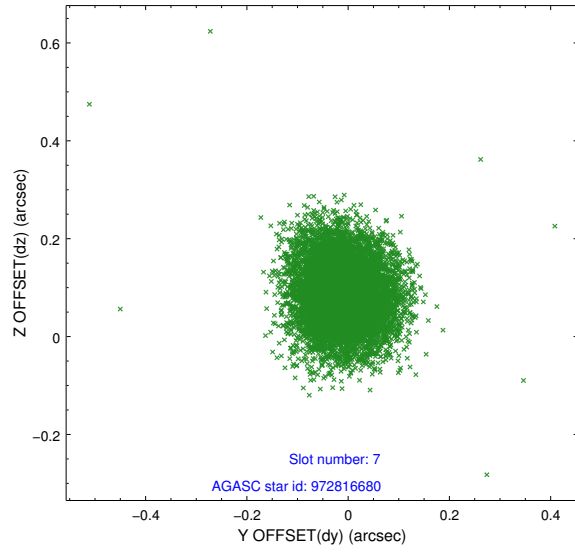
2.4.3 Slot 5



2.4.4 Slot 6

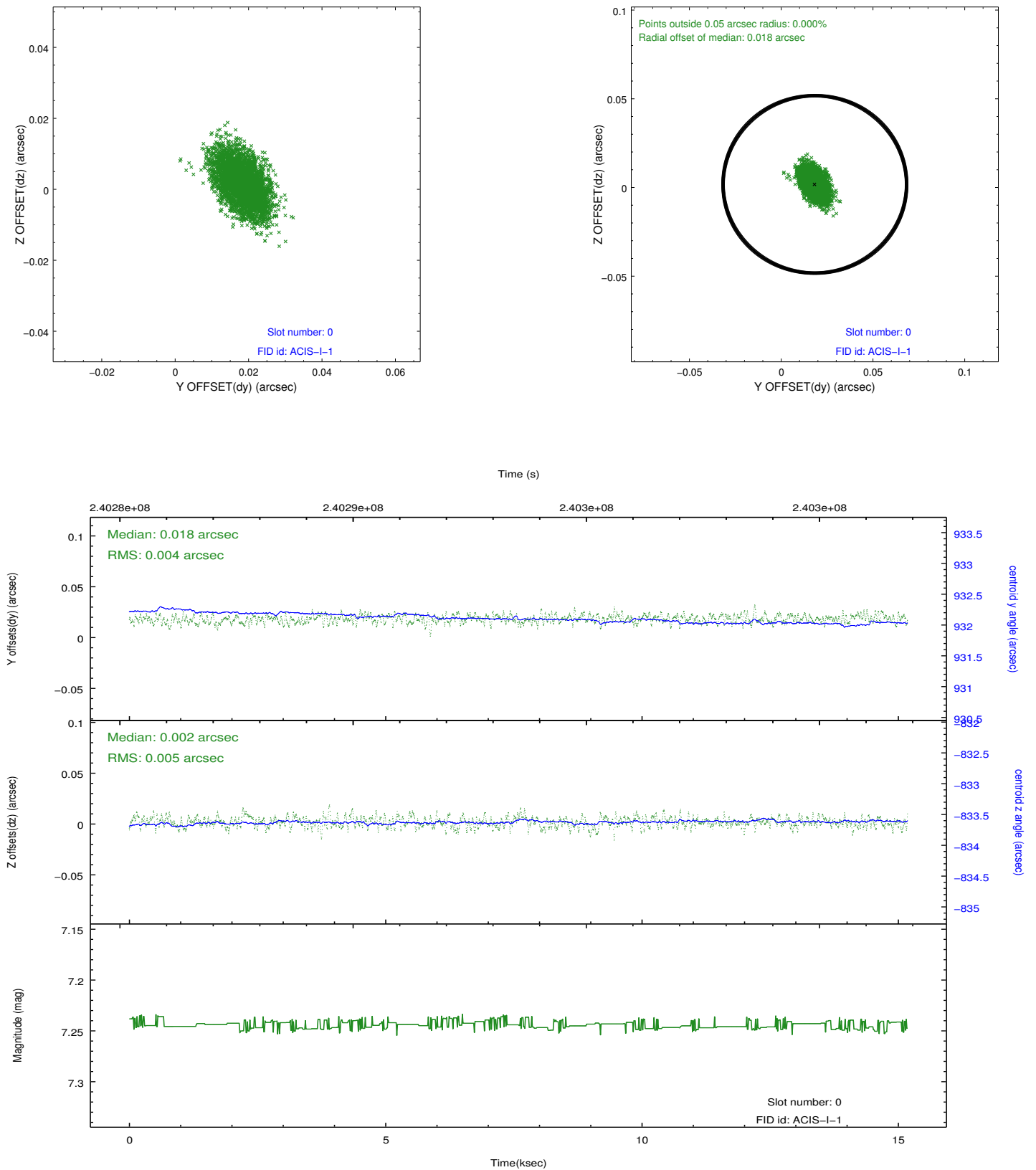


2.4.5 Slot 7

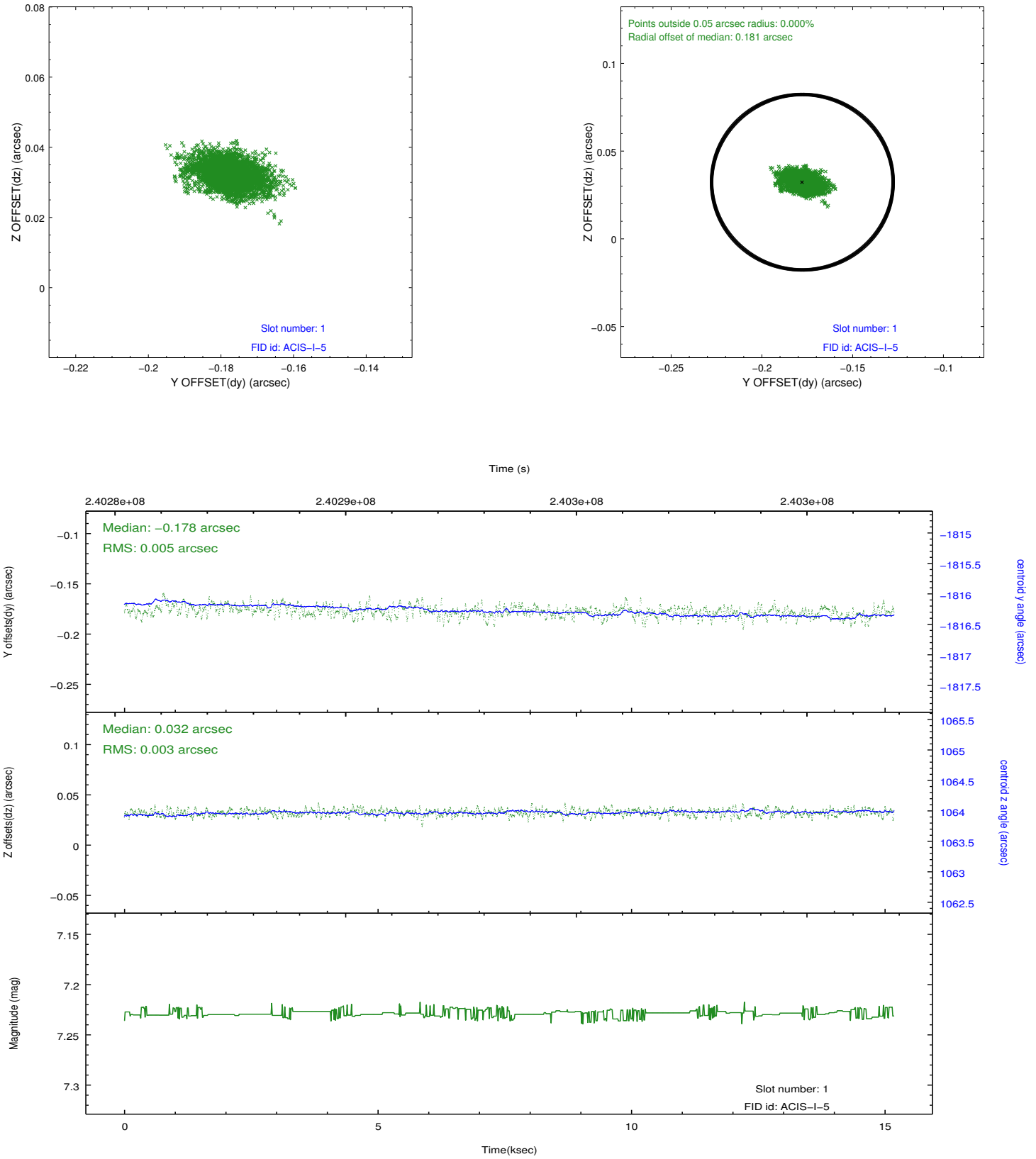


2.5 FID Slots

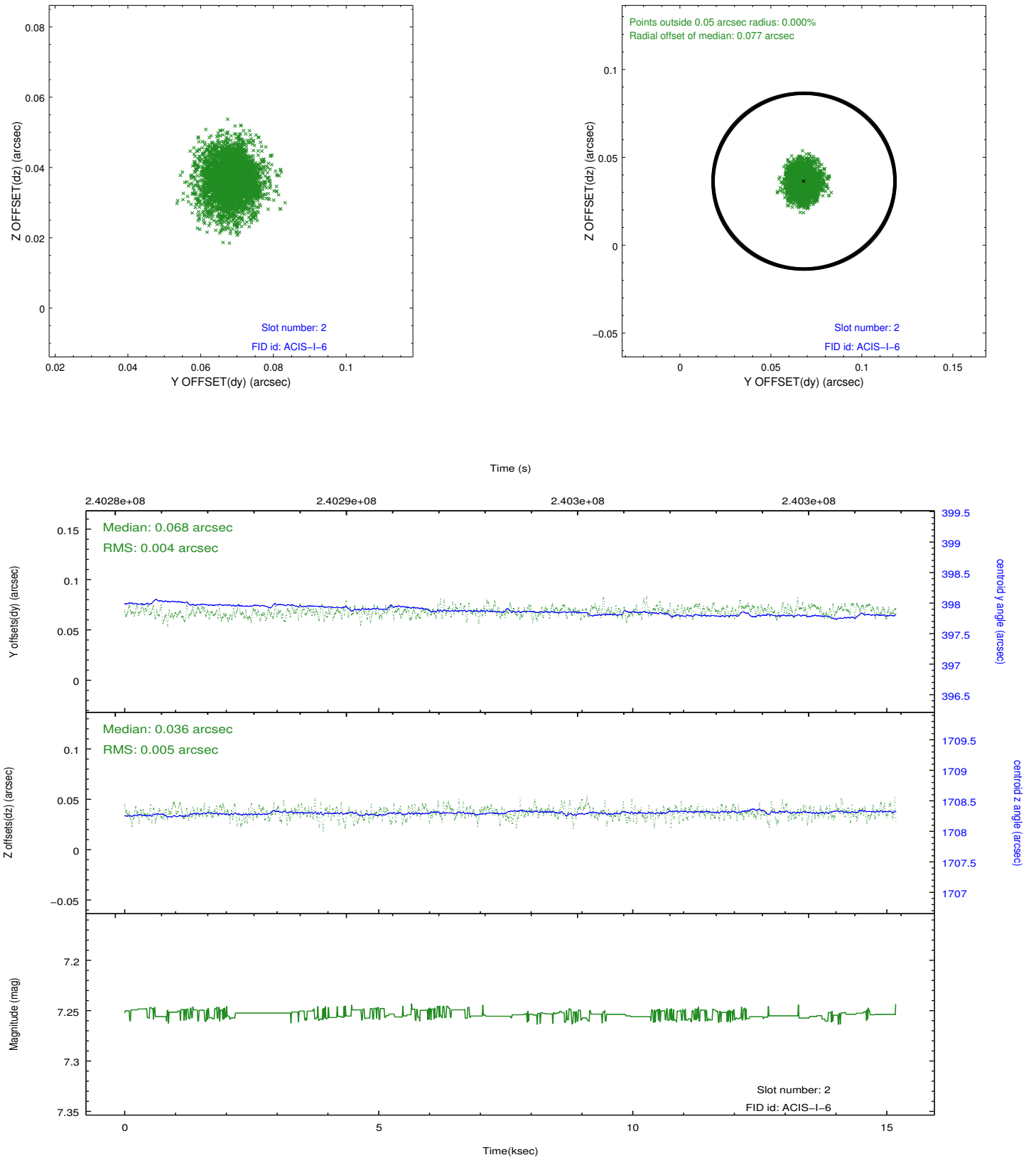
2.5.1 Slot 0



2.5.2 Slot 1



2.5.3 Slot 2



A Summary

A.1 Status

| | |
|----------------------------|---------------|
| V&V Scientist | Beth Sundheim |
| V&V Date (YYYY-MM-DD) | 2013.01.24 |
| V&V Edition | 1 |
| V&V Disposition and Status | OK |
| V&V Charge Time | 14.75519 |

A.2 Comments

Joint proposal with NRAO.