

# V&V Reference Report

## L2 ASCDS Version : 7.6.7.1

Observation 5406 - L2 Version 002  
Chandra X-Ray Center

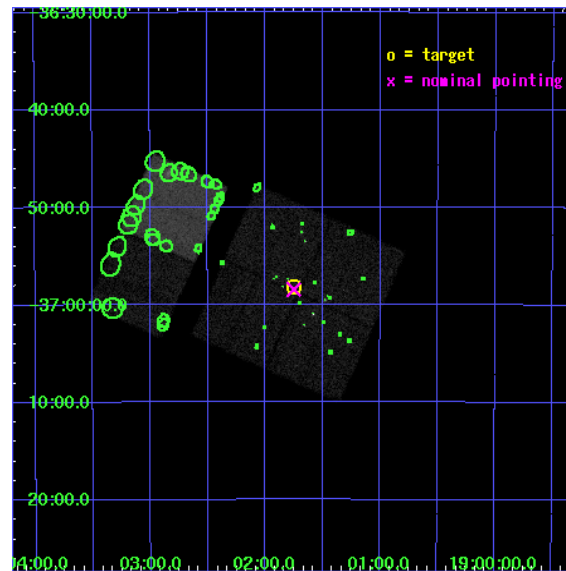
L2 Processing Date : Mar 19 2006

## Contents

<b>1</b>	<b>Front</b>	<b>2</b>
<b>2</b>	<b>OBI</b>	<b>3</b>
2.1	OBI . . . . .	3
2.1.1	Images . . . . .	3
2.1.2	Bias . . . . .	3
2.1.3	Parameters . . . . .	4
2.1.4	Events . . . . .	4
2.2	Compared Parameters . . . . .	5
2.3	Aspect . . . . .	6
2.4	Star Slots . . . . .	9
2.4.1	Slot 3 . . . . .	9
2.4.2	Slot 4 . . . . .	10
2.4.3	Slot 5 . . . . .	11
2.4.4	Slot 6 . . . . .	12
2.4.5	Slot 7 . . . . .	13
2.5	FID Slots . . . . .	14
2.5.1	Slot 0 . . . . .	14
2.5.2	Slot 1 . . . . .	15
2.5.3	Slot 2 . . . . .	16
<b>3</b>	<b>Point Sources</b>	<b>17</b>
<b>A</b>	<b>Summary</b>	<b>18</b>
A.1	Status . . . . .	18
A.2	Comments . . . . .	18

# 1 Front

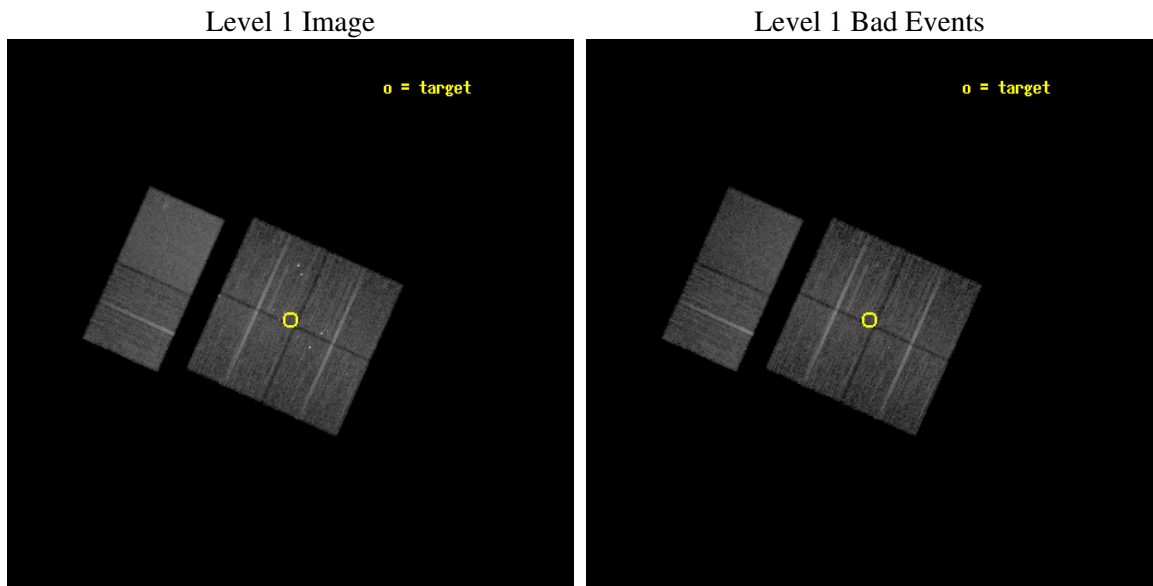
seq_num	200340
obs_id	5406
title	Simultaneous X-ray and Radio Monitoring of YSO Activity in the Coronet Cluster
observer	Jan Forbrich
object	Coronet Cluster
dtcycle	0
cycle	P
ra_targ	285.4375
dec_targ	-36.969167
ra_nom	285.43764806374
dec_nom	-36.973767679493
roll_nom	294.15814047828
revision	2
ontime	14755.199945033
livetime	14568.360718814
ontime0	14755.199945033
ontime1	14755.199945033
ontime2	14755.199945033
ontime3	14755.199945033
ontime6	14755.199945033
ontime7	14755.199945033
l2events	119256



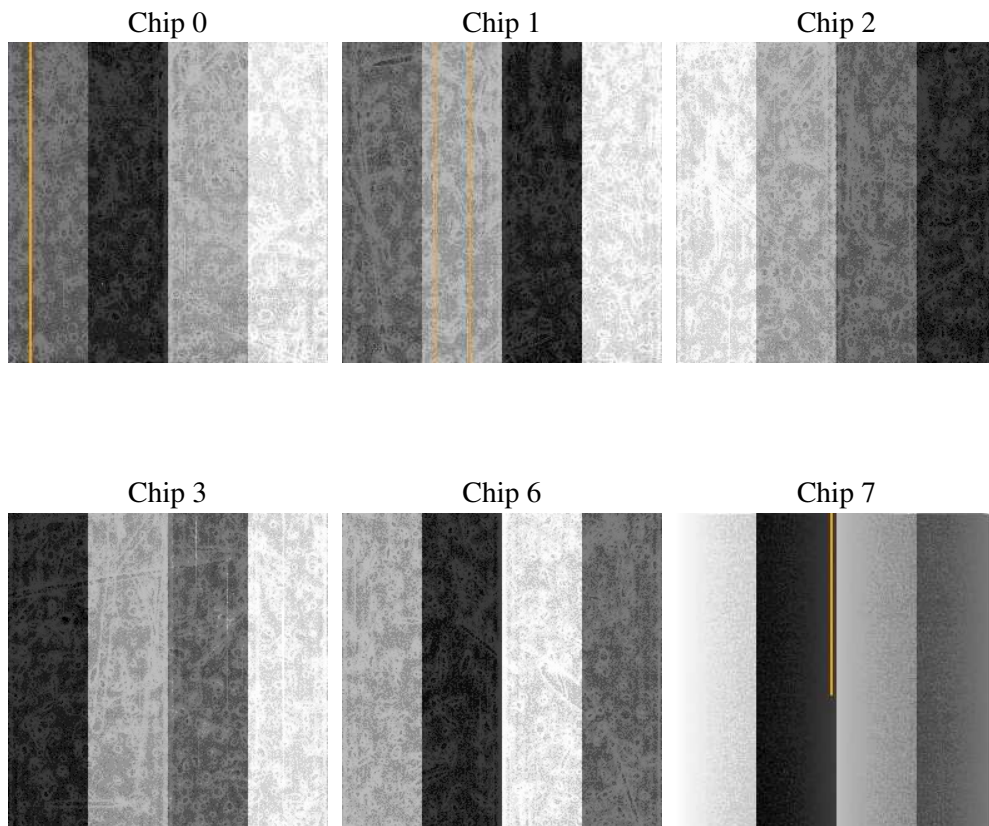
## 2 OBI

### 2.1 OBI

#### 2.1.1 Images



#### 2.1.2 Bias



### 2.1.3 Parameters

obi_num	0
ascdsver	7.6.7.1
caldsver	3.2.1
date	2006-03-19T06:19:15
revision	2

sched_exp_time	15000.000000
ontime	14759.563786715
ontime0	14759.563786715
ontime1	14759.563786715
ontime2	14759.563766807
ontime3	14759.563786715
ontime6	14759.563766807
ontime7	14759.563766807
l1events	671728

### 2.1.4 Events

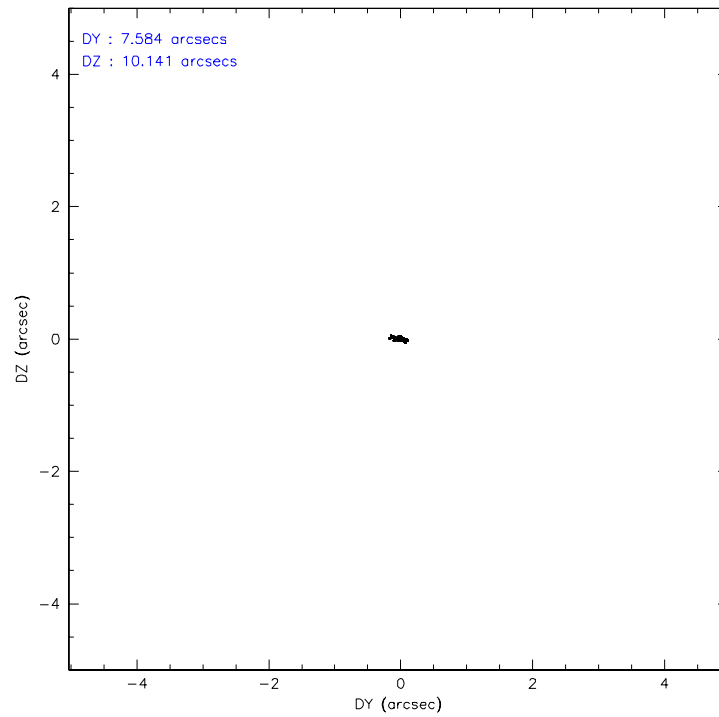
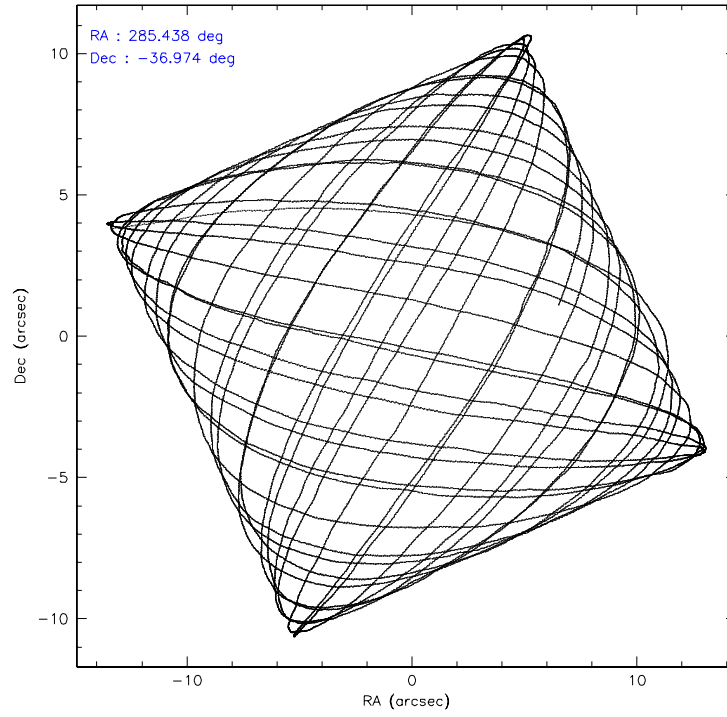
	ccd 0	ccd 1	ccd 2	ccd 3	ccd 6	ccd 7
level 1 events	100540	100246	105433	108749	111307	145453
rejected events	83665	84827	92551	92236	98565	89712
rejected %	83%	84%	87%	84%	88%	61%

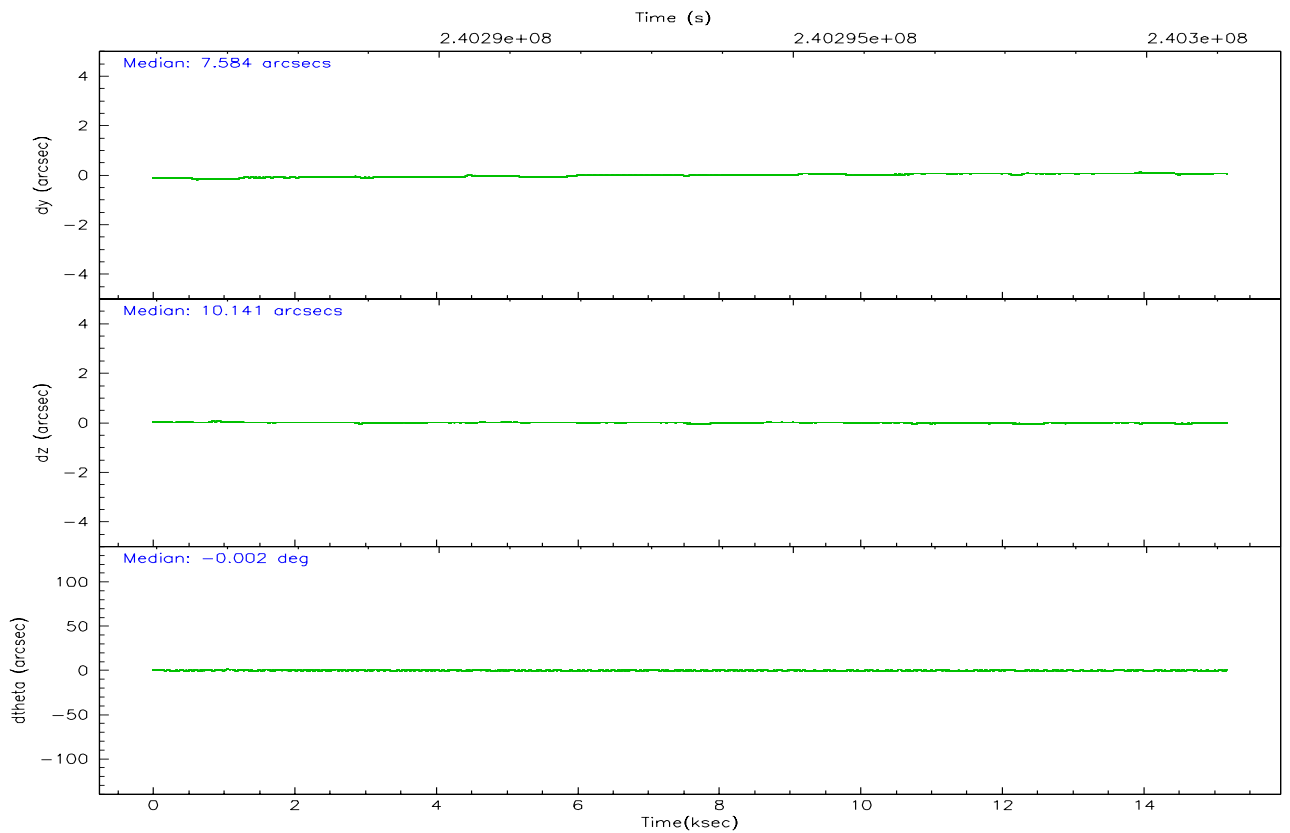
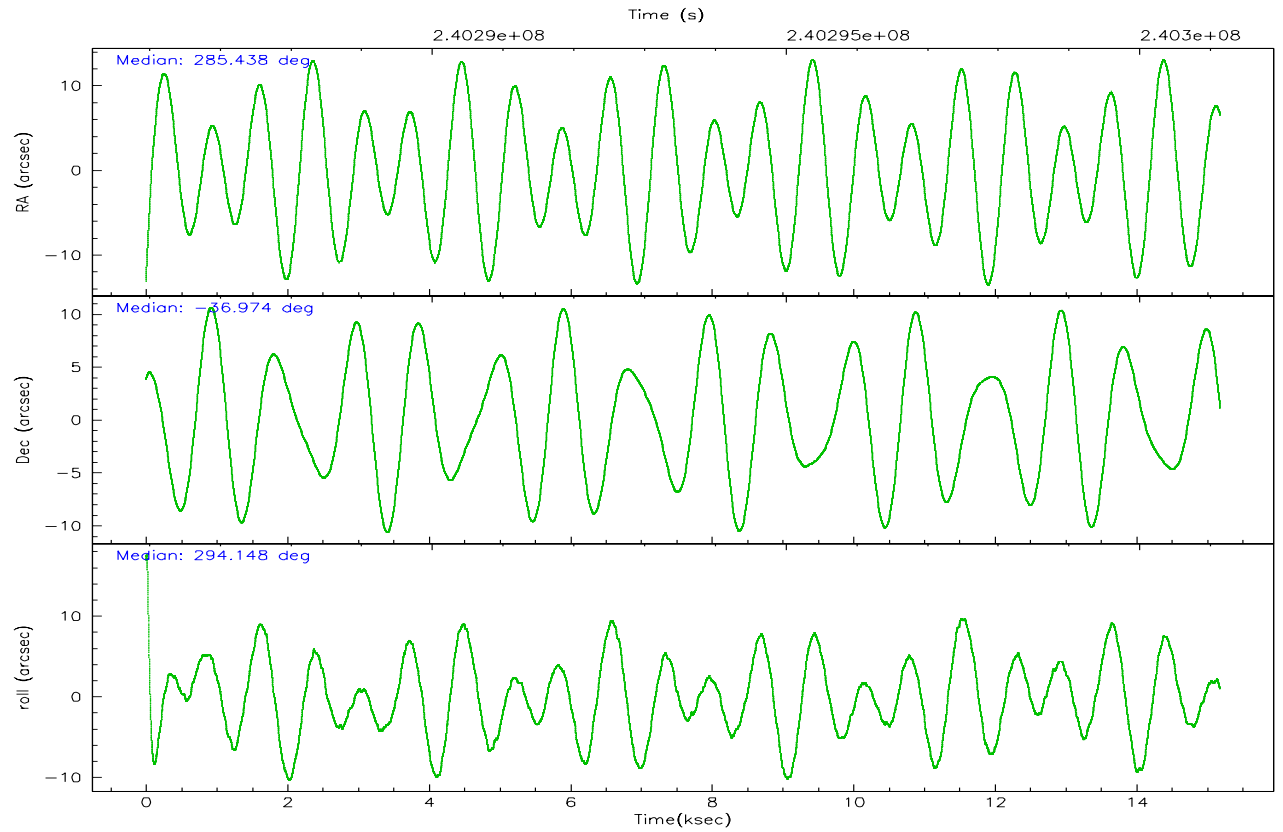
	ccd 0	ccd 1	ccd 2	ccd 3	ccd 6	ccd 7
grade 0 events	8613	6655	5683	8681	4831	3190
	8%	6%	5%	7%	4%	2%
grade 1 events	291	66	65	113	63	92
	0%	0%	0%	0%	0%	0%
grade 2 events	3141	3240	2585	2818	2796	13980
	3%	3%	2%	2%	2%	9%
grade 3 events	1441	1400	1241	1309	1215	2680
	1%	1%	1%	1%	1%	1%
grade 4 events	1318	1358	1159	1411	1222	2586
	1%	1%	1%	1%	1%	1%
grade 5 events	4514	4568	4128	4884	5209	9588
	4%	4%	3%	4%	4%	6%
grade 6 events	2365	2769	2219	2295	2681	33320
	2%	2%	2%	2%	2%	22%
grade 7 events	78857	80190	88353	87238	93290	80017
	78%	79%	83%	80%	83%	55%

## 2.2 Compared Parameters

Parameter	Planned	Actual	Parameter	Planned	Actual
Instrument	ACIS	ACIS	Obspar format version number	6	6
Detector	ACIS-012367	ACIS-012367	Obspar file type	PREDICTED	ACTUAL
Grating	NONE	NONE	Obspar update status	NONE	UPDATED
Data mode	FAINT	FAINT	On-chip summing requested	N	N
Observation mode	POINTING	POINTING	Subarray requested	NONE	NONE
Pointing RA	285.409759	285.437648063741	Alternating exposures requested	N	N
Pointing Dec	-36.957857	-36.97376767949287	Primary exposure time	0.000000	3.2
Pointing Roll	293.932652	294.1581404782768			
SIM focus pos (mm)	-0.782348	-0.7809083437167272			
SIM defocus (mm)	0	0.001439871863259334			
SIM translation stage pos (mm)	-233.592463	-233.5874344608287			
SIM translation stage offset (mm)	0	-0.005018542100998502			
Observation start time	240286130.184000	240285080.92985			
Observation start date	2005-08-13T02:07:46	2005-08-13T01:51:20			
Observation end time	240301130.184000	240302072.35563			
Observation end date	2005-08-13T06:17:46	2005-08-13T06:34:32			
Read mode	TIMED	TIMED			

## 2.3 Aspect





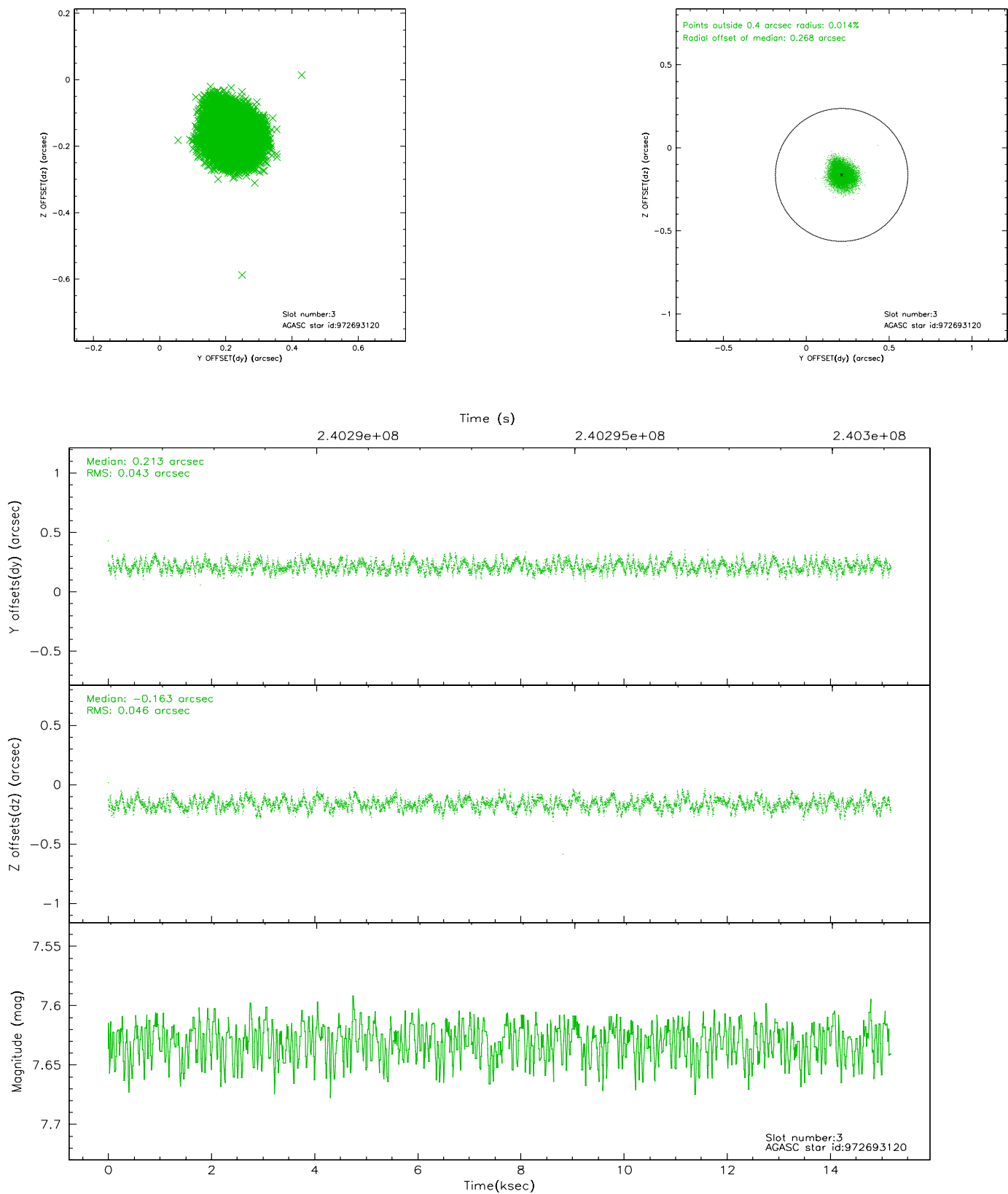
### Slot Statistics

slot	status	id	mag	n_pts	med_dy	med_dz	dr1	dr2	ra	dec	mean_y	mean_z
0	FID	ACIS-I-1	7.24	3704	-0.002	0.029	0.006	0.011	0.000000	0.000000	932.09	-833.59
1	FID	ACIS-I-5	7.23	3704	-0.147	0.025	0.006	0.011	0.000000	0.000000	-1816.00	1063.75
2	FID	ACIS-I-6	7.25	3704	0.058	0.017	0.007	0.012	0.000000	0.000000	397.38	1708.58
3	GUIDE	972693120	7.63	7408	0.213	-0.163	0.069	0.103	285.412210	-36.890704	-217.53	104.23
4	GUIDE	972694056	7.05	7408	-0.107	-0.011	0.041	0.067	285.682787	-36.657985	-665.80	1157.98
5	GUIDE	1037567144	8.74	7403	0.008	0.030	0.069	0.113	284.940440	-37.605390	1591.46	-2170.11
6	GUIDE	972689192	8.92	7405	-0.104	0.053	0.082	0.133	284.589186	-37.133486	-367.28	-2413.57
7	GUIDE	972816680	9.15	7401	-0.012	0.088	0.089	0.140	286.054324	-36.904693	583.51	1770.84

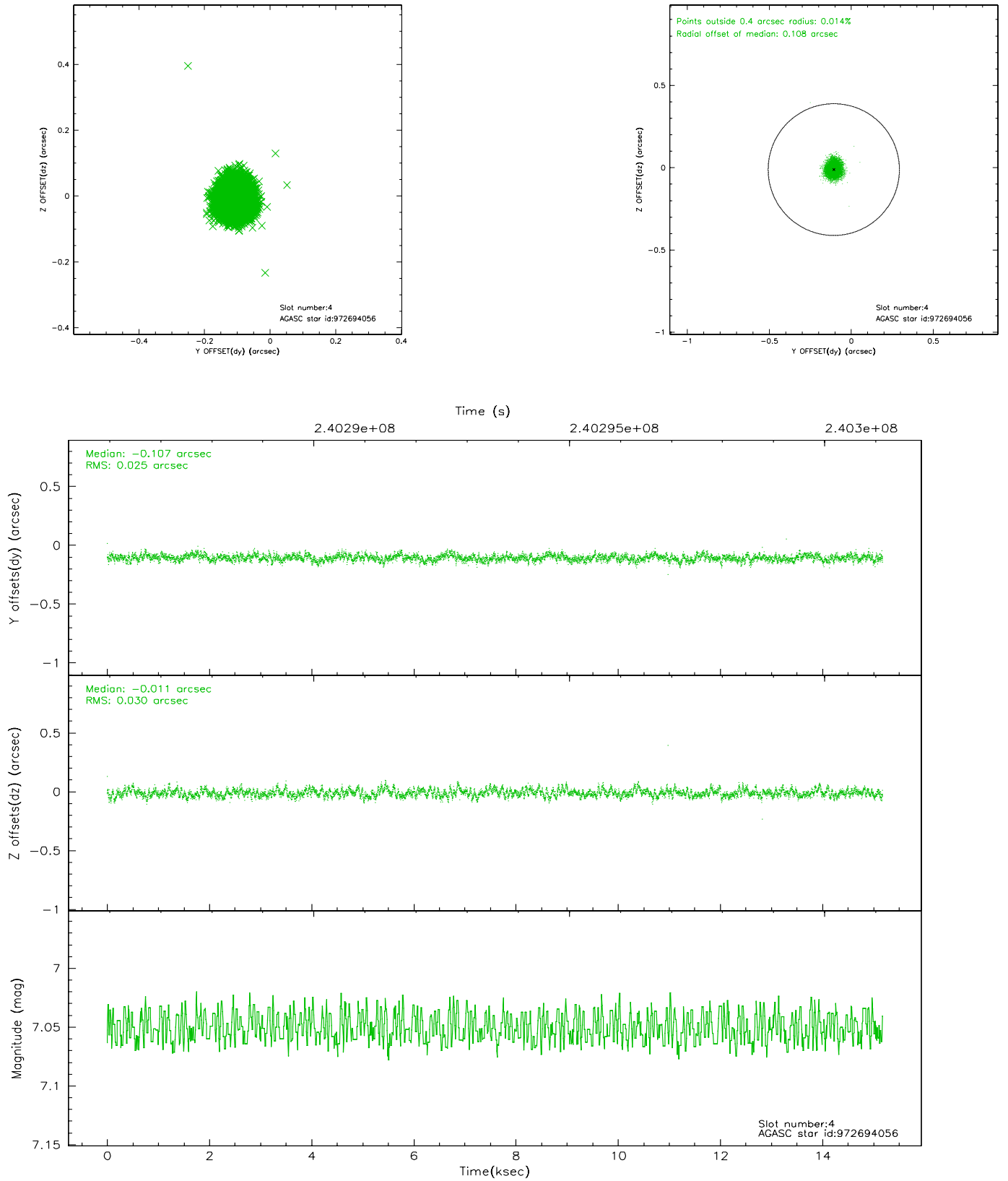


## 2.4 Star Slots

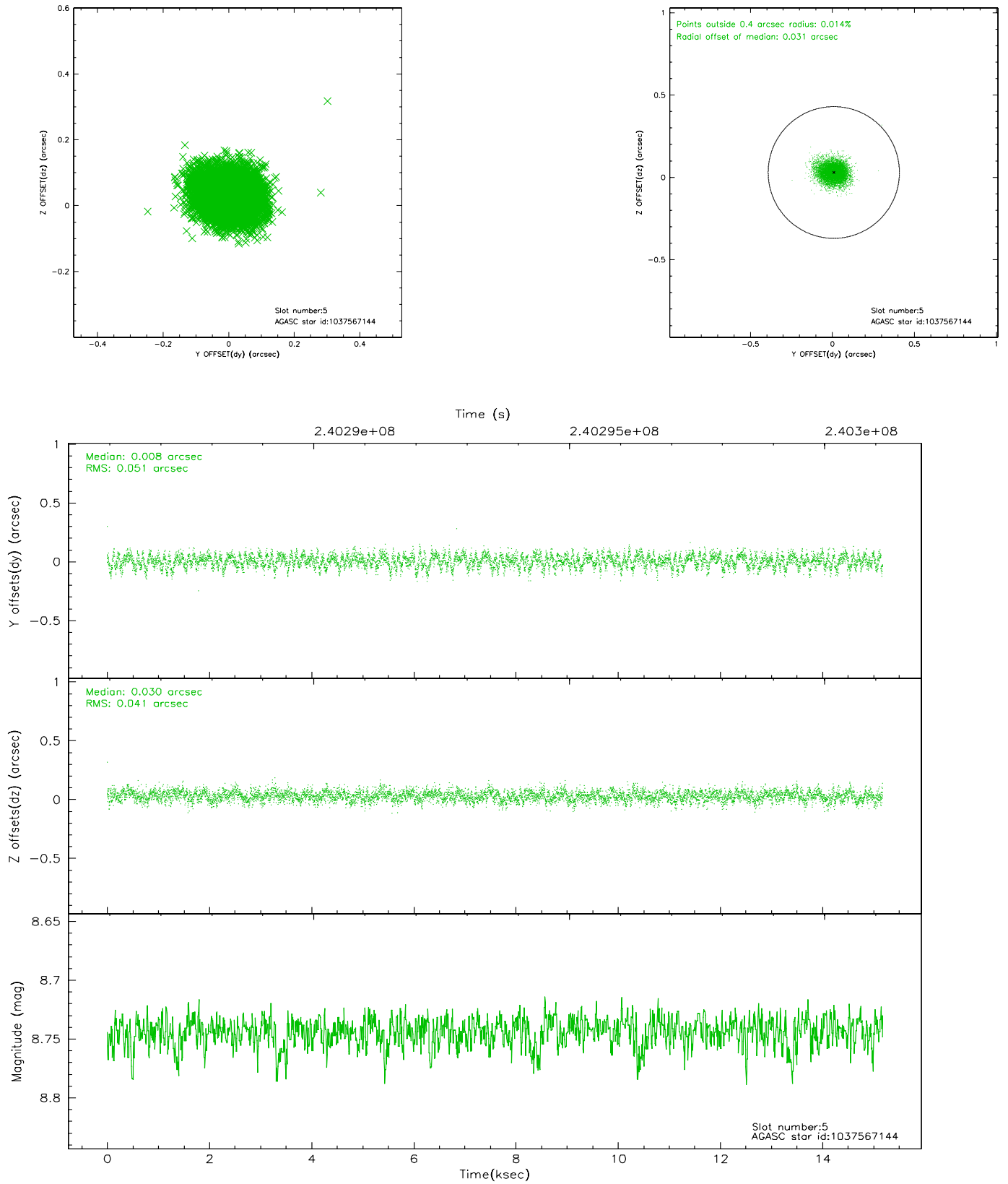
### 2.4.1 Slot 3



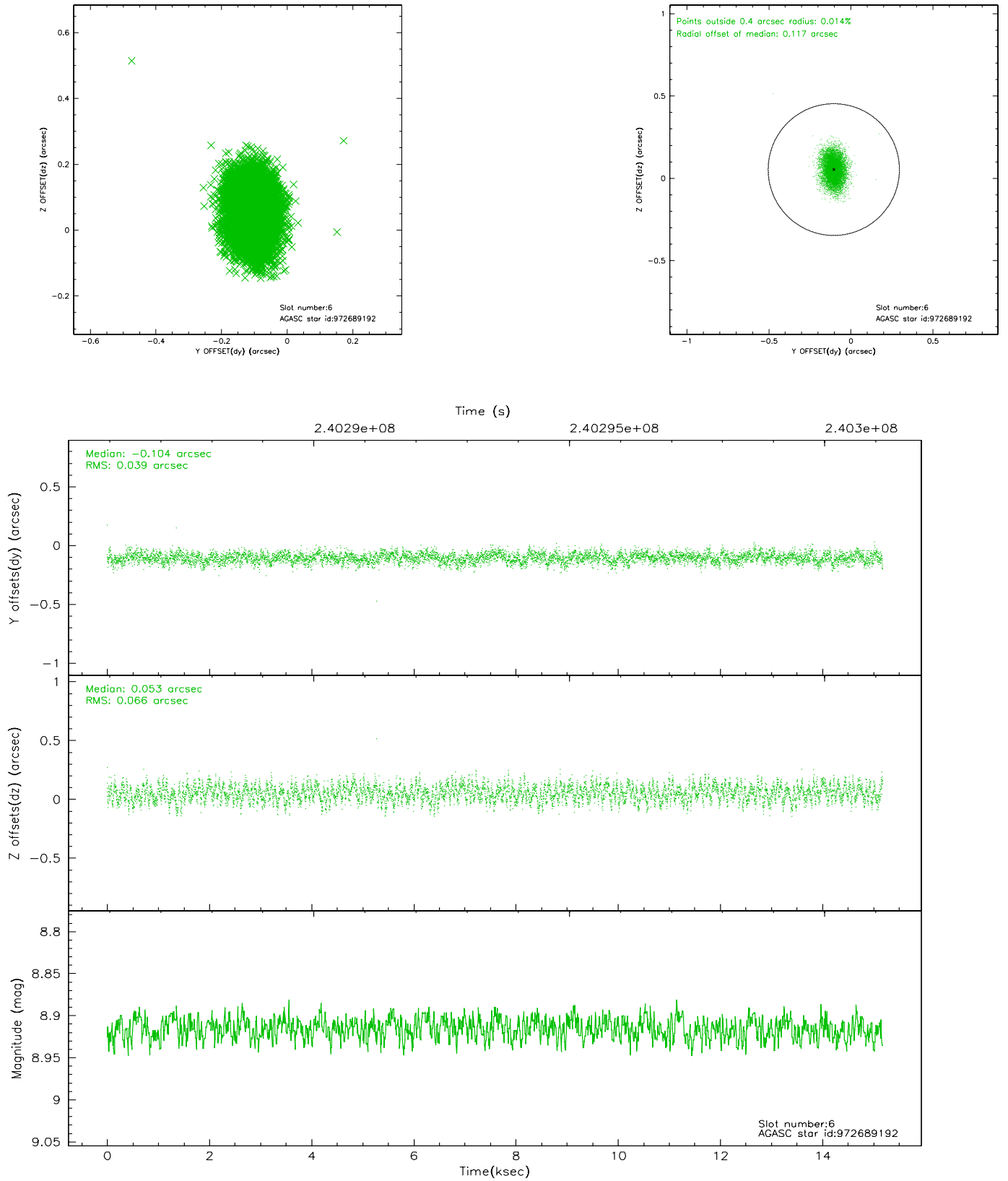
## 2.4.2 Slot 4



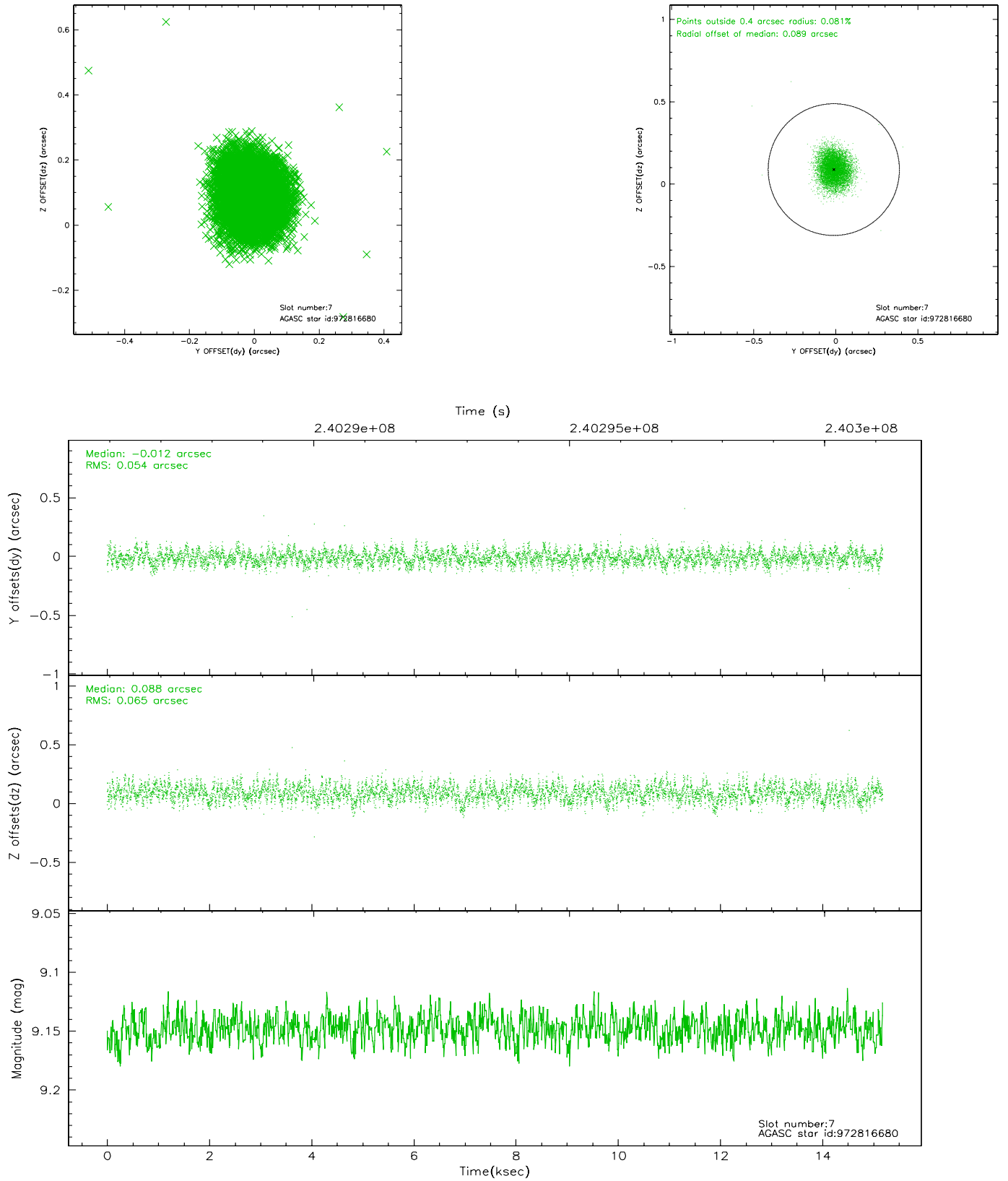
### 2.4.3 Slot 5



## 2.4.4 Slot 6

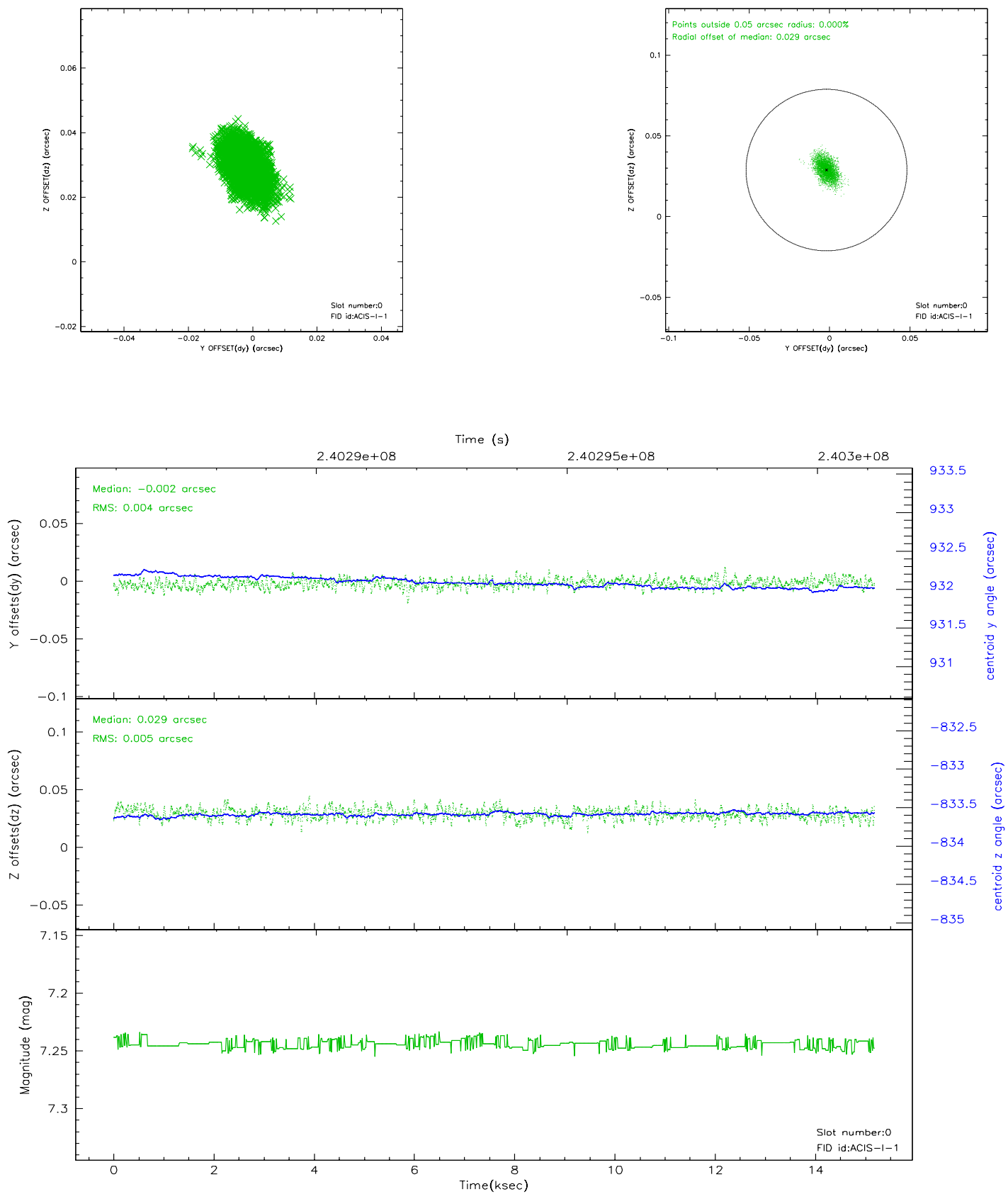


## 2.4.5 Slot 7

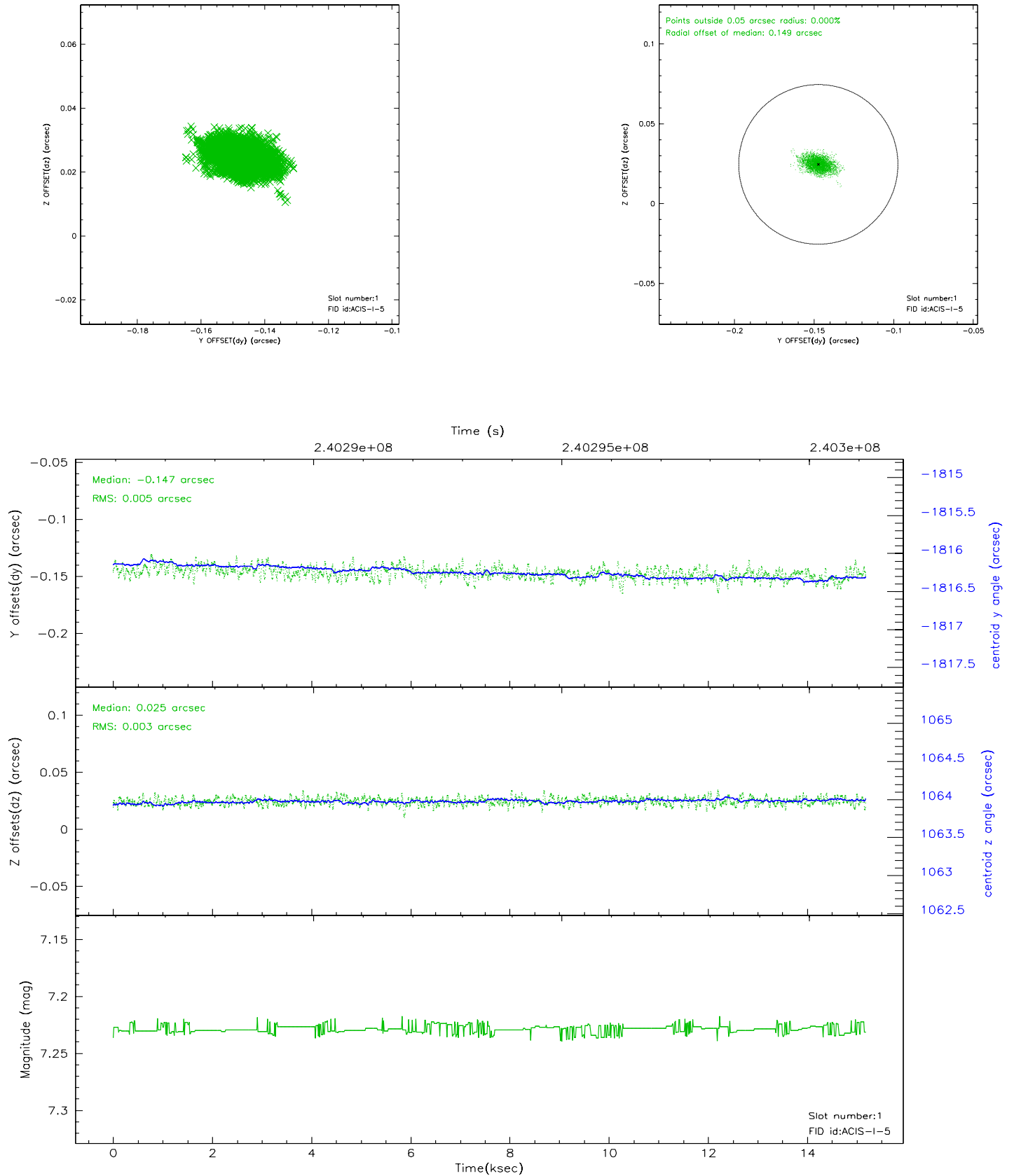


## 2.5 FID Slots

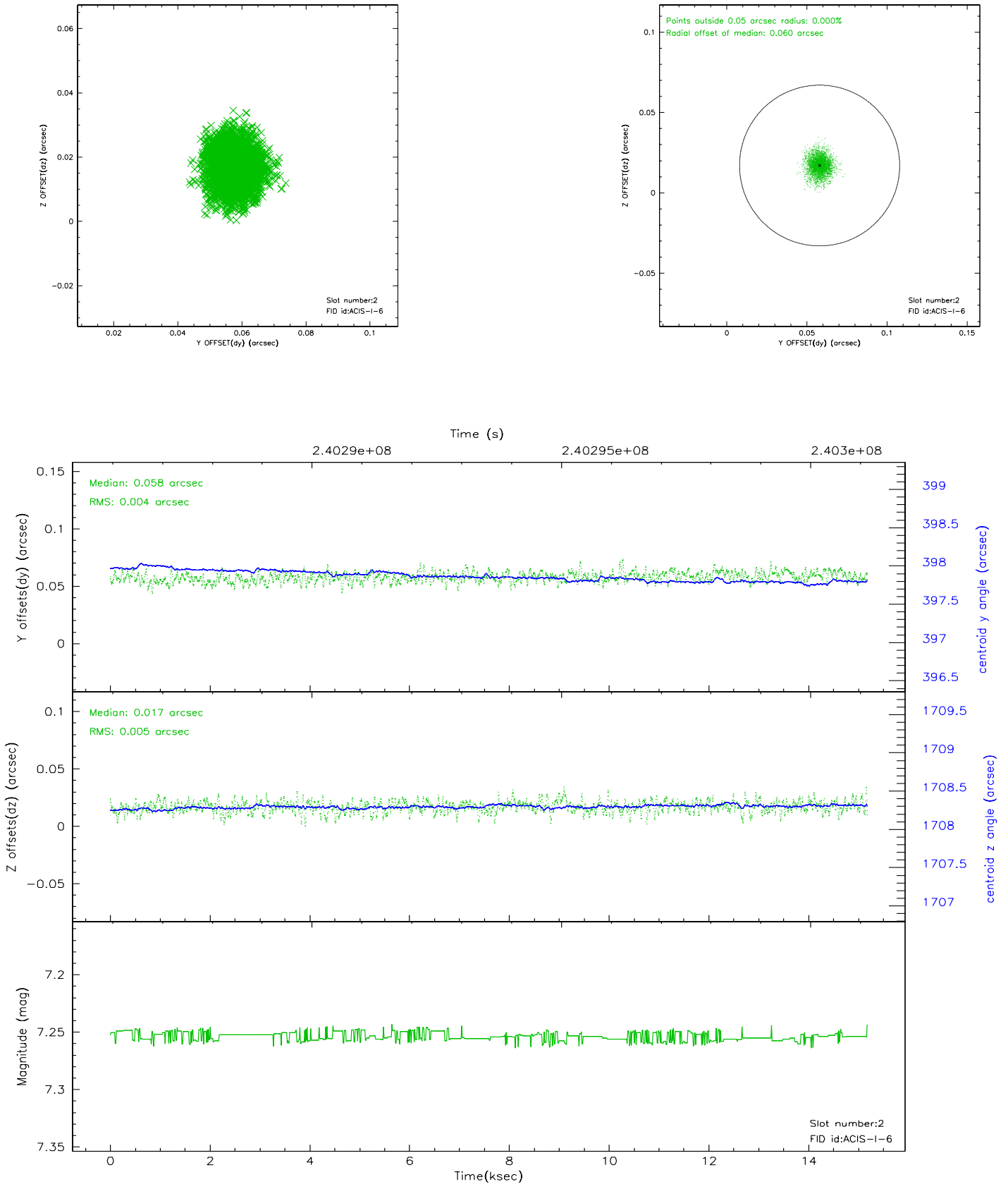
### 2.5.1 Slot 0



## 2.5.2 Slot 1

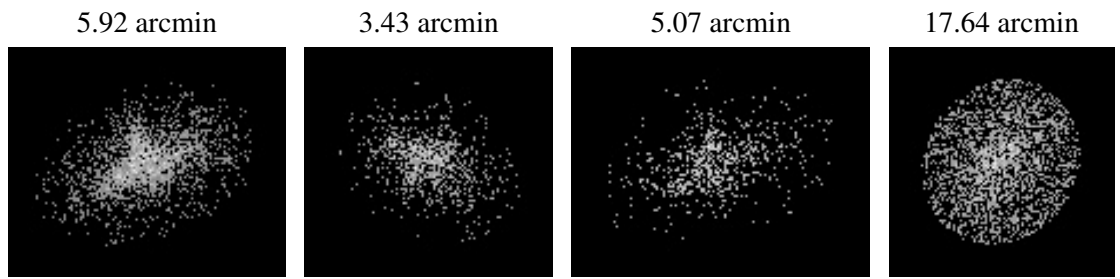


### 2.5.3 Slot 2





### 3 Point Sources



## A Summary

### A.1 Status

V&V Scientist	Jen Lauer
V&V Date (YYYY-MM-DD)	2006.03.20
V&V Edition	1
V&V Disposition and Status	OK
V&V Charge Time	14.75519

### A.2 Comments