

V&V Reference Report

L2 ASCDS Version : 8.5.1.1

Observation 53786 - L2 Version 1
Chandra X-Ray Center

L2 Processing Date : Apr 12 2013

Contents

1	Front	2
2	OBI	3
2.1	OBI	3
2.1.1	Images	3
2.1.2	Bias	3
2.1.3	Parameters	4
2.1.4	Events	4
2.2	Compared Parameters	5
2.3	Star Slots	6
2.4	FID Slots	6
A	Summary	7
A.1	Status	7
A.2	Comments	7

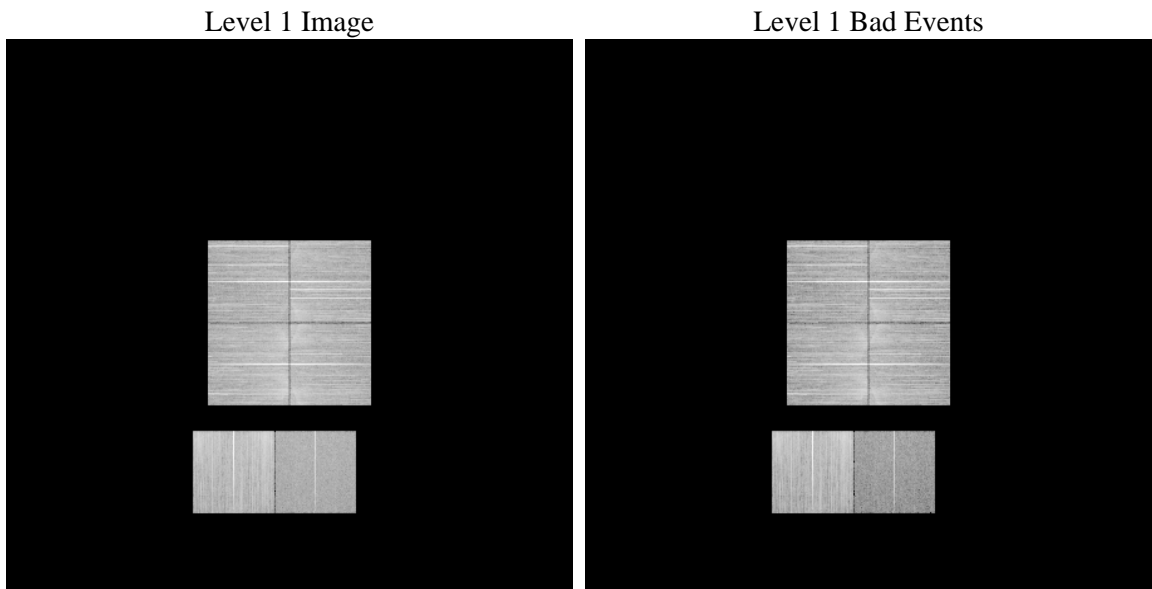
1 Front

seq_num	 	Sequence number
obs_id	53786	Observation id
title	ACIS-012367 diagnostics	Proposal title
observer	CHANDRA engineering request/realtime commanding	Principal investig
object	 	Source name
dtcycle	0	
cycle	P	events from which exps? Prim/Second/Both
ra_targ	0.0	Observer's specified target RA [deg]
dec_targ	0.0	Observer's specified target Dec [deg]
ra_nom	204.54445203317	Nominal RA [deg]
dec_nom	14.40691967017	Nominal Dec [deg]
roll_nom	185.81507926901	Nominal Roll [deg]
revision	1	Processing version of data
ontime	8025.5999701619	Sum of GTIs [s]
livetime	7923.9749909036	Livetime [s]
ontime0	8019.1179893613	Sum of GTIs [s]
ontime1	8022.3589897752	Sum of GTIs [s]
ontime2	8025.5999701619	Sum of GTIs [s]
ontime3	8025.5999701619	Sum of GTIs [s]
ontime6	8025.5999701619	Sum of GTIs [s]
ontime7	8025.5999701619	Sum of GTIs [s]
l2events	248554	Number of level 2 events

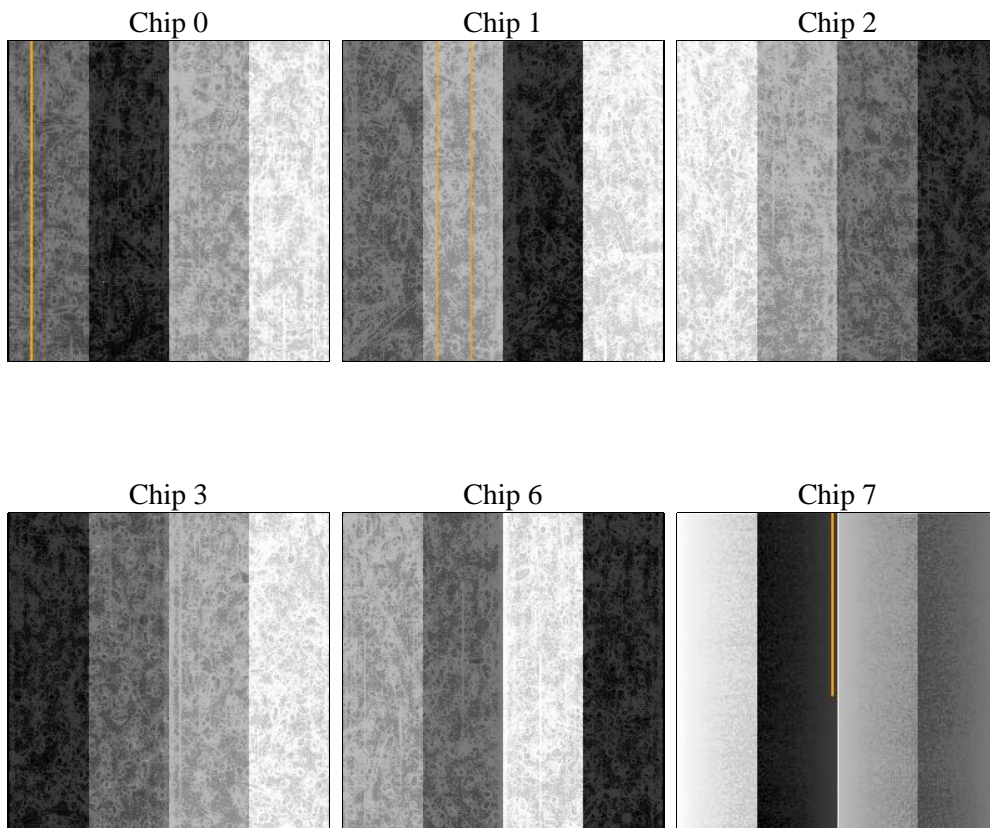
2 OBI

2.1 OBI

2.1.1 Images



2.1.2 Bias



2.1.3 Parameters

obi_num	0	Obi number	sched_exp_time	0.0	[s] Scheduled observation exposure time
ascdsver	8.5.1.1	Processing system revision	ontime	8025.5999701619	Sum of GTIs [s]
caldsver	4.5.6	 	ontime0	8019.1179893613	Sum of GTIs [s]
date	2013-04-12T09:28:52	Date and time of file creation	ontime1	8022.3589897752	Sum of GTIs [s]
revision	1	Processing version of data	ontime2	8025.5999701619	Sum of GTIs [s]
			ontime3	8025.5999701619	Sum of GTIs [s]
			ontime6	8025.5999701619	Sum of GTIs [s]
			ontime7	8025.5999701619	Sum of GTIs [s]
			l1events	1473840	Number of level 1 events

2.1.4 Events

	ccd 0	ccd 1	ccd 2	ccd 3	ccd 6	ccd 7		ccd 0	ccd 1	ccd 2	ccd 3	ccd 6	ccd 7
level 1 events	235389	260801	270064	250793	292812	163981	grade 0 events	20172	19424	21058	20348	20625	10761
rejected events	197150	222964	231497	213394	253442	89005		8%	7%	7%	8%	7%	6%
rejected %	83%	85%	85%	85%	86%	54%	grade 1 events	194	139	203	173	142	175
								0%	0%	0%	0%	0%	0%
							grade 2 events	7890	8179	7545	7233	8295	20830
								3%	3%	2%	2%	2%	12%
							grade 3 events	2716	2574	2629	2692	2545	6163
								1%	0%	0%	1%	0%	3%
							grade 4 events	2699	2621	2824	2675	2626	6188
								1%	1%	1%	1%	0%	3%
							grade 5 events	3092	3206	2904	3289	3345	8946
								1%	1%	1%	1%	1%	5%
							grade 6 events	5796	6176	5641	5539	6490	33302
								2%	2%	2%	2%	2%	20%
							grade 7 events	192830	218482	227260	208844	248744	77616
								81%	83%	84%	83%	84%	47%

2.2 Compared Parameters

Parameter	Planned	Actual
Instrument	ACIS	ACIS
Detector	ACIS-012367	ACIS-012367
Grating	NONE	NONE
Data mode	FAINT	FAINT
Observation mode	SECONDARY	SECONDARY
[deg] Pointing RA	0	204.5444520331736
[deg] Pointing Dec	0	14.40691967017013
[deg] Pointing Roll	0.0	185.8150792690142
SIM focus pos (mm)	-1.4281808131	-1.4281808131
[mm] SIM defocus	0.1051557500557434	0.1051557500557434
SIM translation stage pos (mm)	250.4660330802	250.4660330802
[mm] SIM translation stage offset	-0.01005726120527584	-0.01005726120527584
[s] Observation start time (MET)	482070898.998035	482070898.998035
Observation start date	2013-04-11T12:34:59	2013-04-11T12:34:58
[s] Observation end time (MET)	482080448.268432	482080448.268432
Observation end date	2013-04-11T15:14:08	2013-04-11T15:14:08
Read mode	TIMED	TIMED

Parameter	Planned	Actual
Obspar format version number	7	7
Obspar file type	PREDICTED	ACTUAL
Obspar update status	OVERRIDE	OVERRIDE
Number of optional ACIS chips dropped	0	0
On-chip summing requested	N	N
Subarray requested	NONE	NONE
Alternating exposures requested	N	N
[s] Primary exposure time	3.2	3.2

2.3 Star Slots

2.4 FID Slots

A Summary

A.1 Status

V&V Scientist	Jen Lauer
V&V Date (YYYY-MM-DD)	2013.04.12
V&V Edition	1
V&V Disposition and Status	OK
V&V Charge Time	8.0255999701619

A.2 Comments