

V&V Reference Report

L2 ASCDS Version : 10

Observation 53546 - L2 Version 1
Chandra X-Ray Center

L2 Processing Date : Jul 18 2013

Contents

1	Front	2
2	OBI	3
2.1	OBI	3
2.1.1	Images	3
2.1.2	Bias	3
2.1.3	Parameters	4
2.1.4	Events	4
2.2	Compared Parameters	5
2.3	Star Slots	6
2.4	FID Slots	6
A	Summary	7
A.1	Status	7
A.2	Comments	7

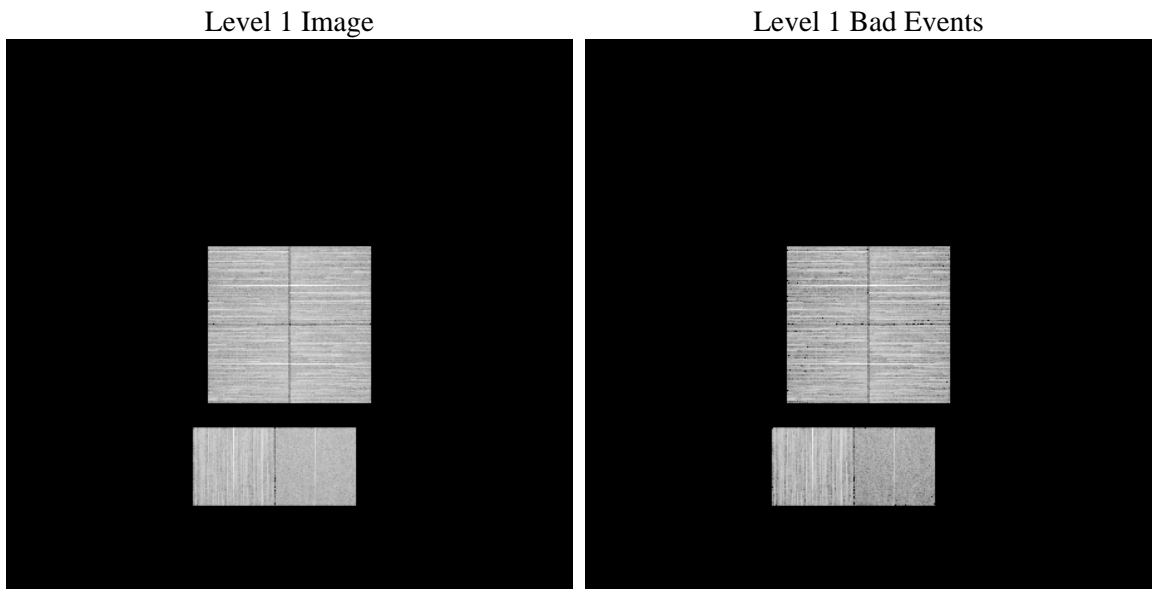
1 Front

seq_num	 	Sequence number
obs_id	53546	Observation id
title	ACIS-012367 diagnostics	Proposal title
observer	CHANDRA engineering request/realtime commanding	Principal investig
object	 	Source name
dtcycle	0	
cycle	P	events from which exps? Prim/Second/Both
ra_targ	0.0	Observer's specified target RA [deg]
dec_targ	0.0	Observer's specified target Dec [deg]
ra_nom	327.48231110262	Nominal RA [deg]
dec_nom	-22.976217964065	Nominal Dec [deg]
roll_nom	91.513139525387	Nominal Roll [deg]
revision	1	Processing version of data
ontime	6694.2174087763	Sum of GTIs [s]
livetime	6609.4511971726	Livetime [s]
ontime0	6694.176368773	Sum of GTIs [s]
ontime1	6694.1353287697	Sum of GTIs [s]
ontime2	6694.0942887664	Sum of GTIs [s]
ontime3	6694.2584487796	Sum of GTIs [s]
ontime6	6694.0532487631	Sum of GTIs [s]
ontime7	6694.2174087763	Sum of GTIs [s]
l2events	162723	Number of level 2 events

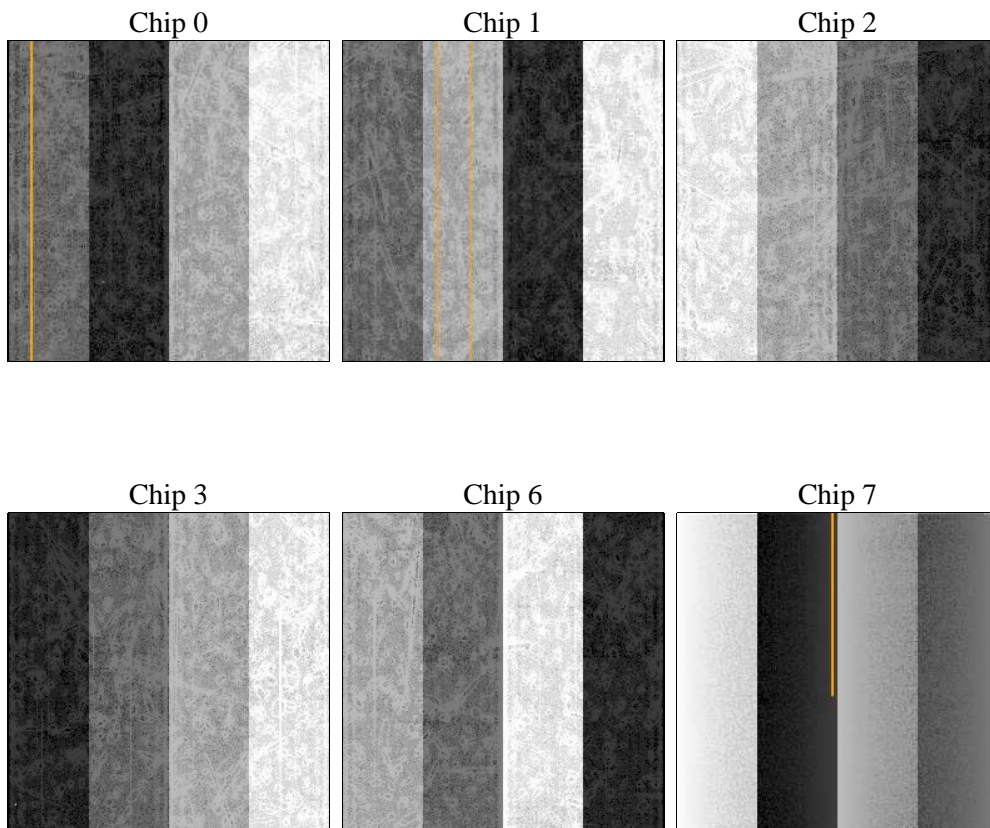
2 OBI

2.1 OBI

2.1.1 Images



2.1.2 Bias



2.1.3 Parameters

obi_num	1	Obi number	sched_exp_time	0.0	[s] Scheduled observation exposure time
ascdsver	10	Processing system revision	ontime	6694.2174087763	Sum of GTIs [s]
caldsver	4.5.7	 	ontime0	6694.176368773	Sum of GTIs [s]
date	2013-07-19T03:30:54	Date and time of file creation	ontime1	6694.1353287697	Sum of GTIs [s]
revision	1	Processing version of data	ontime2	6694.0942887664	Sum of GTIs [s]
			ontime3	6694.2584487796	Sum of GTIs [s]
			ontime6	6694.0532487631	Sum of GTIs [s]
			ontime7	6694.2174087763	Sum of GTIs [s]
			l1events	718787	Number of level 1 events

2.1.4 Events

	ccd 0	ccd 1	ccd 2	ccd 3	ccd 6	ccd 7		ccd 0	ccd 1	ccd 2	ccd 3	ccd 6	ccd 7
level 1 events	117122	121779	122410	128323	129191	99962	grade 0 events	12623	11951	13021	13083	12254	6527
rejected events	92017	96493	97132	103066	103124	54626		10%	9%	10%	10%	9%	6%
rejected %	78%	79%	79%	80%	79%	54%	grade 1 events	67	44	81	60	51	66
								0%	0%	0%	0%	0%	0%
							grade 2 events	5216	5659	5036	4926	5895	11197
								4%	4%	4%	3%	4%	11%
							grade 3 events	1646	1643	1719	1718	1619	3519
								1%	1%	1%	1%	1%	3%
							grade 4 events	1638	1681	1699	1729	1637	3492
								1%	1%	1%	1%	1%	3%
							grade 5 events	2171	2151	2201	2369	2295	5674
								1%	1%	1%	1%	1%	5%
							grade 6 events	3998	4360	3809	3810	4673	20626
								3%	3%	3%	2%	3%	20%
							grade 7 events	89763	94290	94844	100628	100767	48861
								76%	77%	77%	78%	77%	48%

2.2 Compared Parameters

Parameter	Planned	Actual	Parameter	Planned	Actual
Instrument	ACIS	ACIS	Obspar format version number	7	7
Detector	ACIS-012367	ACIS-012367	Obspar file type	PREDICTED	ACTUAL
Grating	NONE	NONE	Obspar update status	NONE	UPDATED
Data mode	FAINT	FAINT	Number of optional ACIS chips dropped	0	0
Observation mode	SECONDARY	SECONDARY	On-chip summing requested	N	N
[deg] Pointing RA	0	327.4823111026154	Subarray requested	NONE	NONE
[deg] Pointing Dec	0	-22.97621796406477	Alternating exposures requested	N	N
[deg] Pointing Roll	0.0	91.51313952538686	[s] Primary exposure time	3.2	3.2
[mm] SIM focus pos	-1.429586	-1.428180813131781			
[mm] SIM defocus	0.1037507710433287	0.1051558262725154			
[mm] SIM translation stage pos	250.455976	250.466033080201			
[mm] SIM translation stage offset	0	-0.01005468664627074			
[s] Observation start time (MET)	490560615.708717	490560614.68372			
Observation start date	2013-07-18T18:50:16	2013-07-18T18:50:14			
[s] Observation end time (MET)	490569201.109185	490569200.08419			
Observation end date	2013-07-18T21:13:21	2013-07-18T21:13:20			
Read mode	TIMED	TIMED			

2.3 Star Slots

2.4 FID Slots

A Summary

A.1 Status

V&V Scientist	Joy Nichols
V&V Date (YYYY-MM-DD)	2013.07.19
V&V Edition	1
V&V Disposition and Status	OK
V&V Charge Time	6.6942174087763

A.2 Comments