

# V&V Reference Report

## L2 ASCDS Version : 7.6.7.2

Observation 5336 - L2 Version 001  
Chandra X-Ray Center

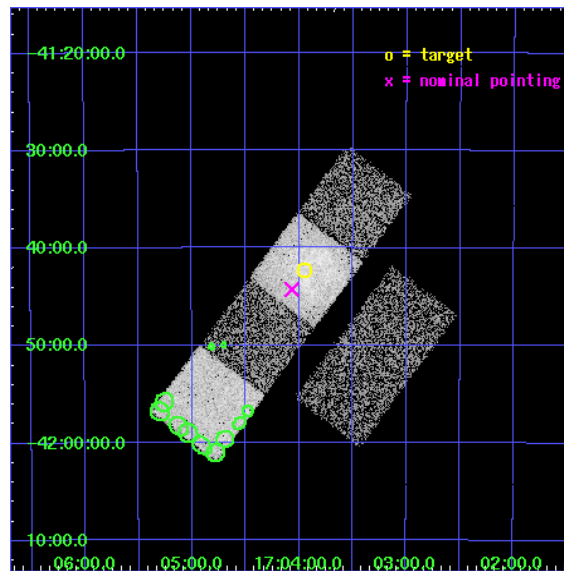
L2 Processing Date : Apr 29 2006

## Contents

<b>1</b>	<b>Front</b>	<b>2</b>
<b>2</b>	<b>OBI</b>	<b>3</b>
2.1	OBI . . . . .	3
2.1.1	Images . . . . .	3
2.1.2	Bias . . . . .	3
2.1.3	Parameters . . . . .	4
2.1.4	Events . . . . .	4
2.2	Compared Parameters . . . . .	5
2.3	Aspect . . . . .	6
2.4	Star Slots . . . . .	9
2.4.1	Slot 3 . . . . .	9
2.4.2	Slot 4 . . . . .	10
2.4.3	Slot 5 . . . . .	11
2.4.4	Slot 6 . . . . .	12
2.4.5	Slot 7 . . . . .	13
2.5	FID Slots . . . . .	14
2.5.1	Slot 0 . . . . .	14
2.5.2	Slot 1 . . . . .	15
2.5.3	Slot 2 . . . . .	16
<b>3</b>	<b>Point Sources</b>	<b>17</b>
<b>A</b>	<b>Summary</b>	<b>18</b>
A.1	Status . . . . .	18
A.2	Comments . . . . .	18

# 1 Front

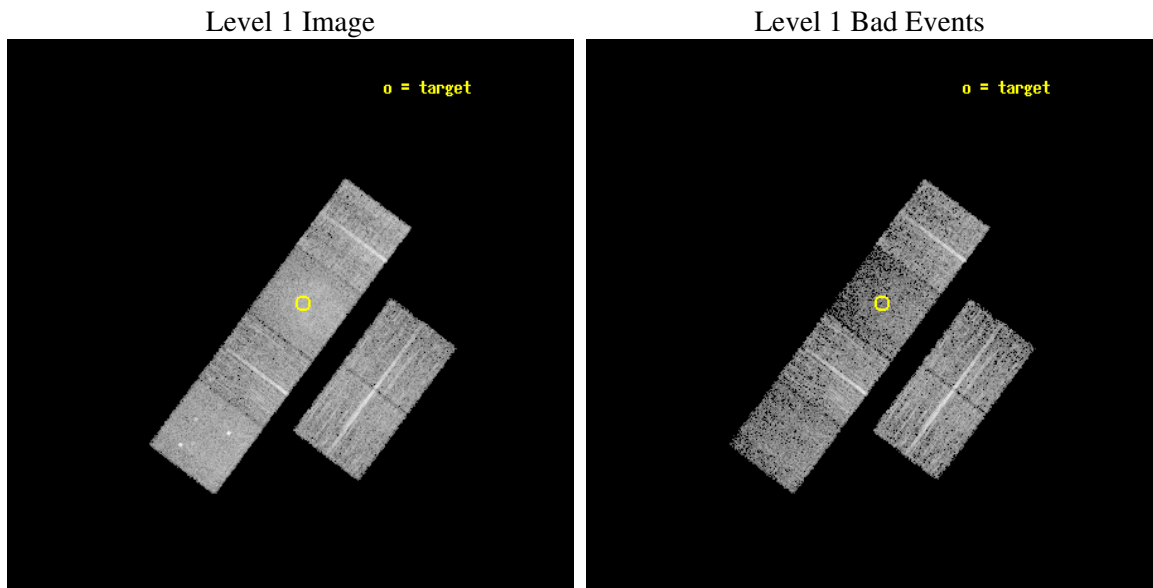
seq_num	500470
obs_id	5336
title	Chandra Studies of New Galactic Ejecta-Dominated SNRS
observer	Prof. John Hughes
object	G344.7-0.1
dtcycle	0
cycle	P
ra_targ	255.9875
dec_targ	-41.705417
ra_nom	256.01709439157
dec_nom	-41.737995455022
roll_nom	306.7763166064
revision	3
ontime	6345.5999763608
livetime	6265.2481685985
ontime2	6345.5999763608
ontime3	6342.3589860797
ontime5	6345.5999763608
ontime6	6345.5999763608
ontime7	6345.5999763608
ontime8	6345.5999763608
l2events	57768



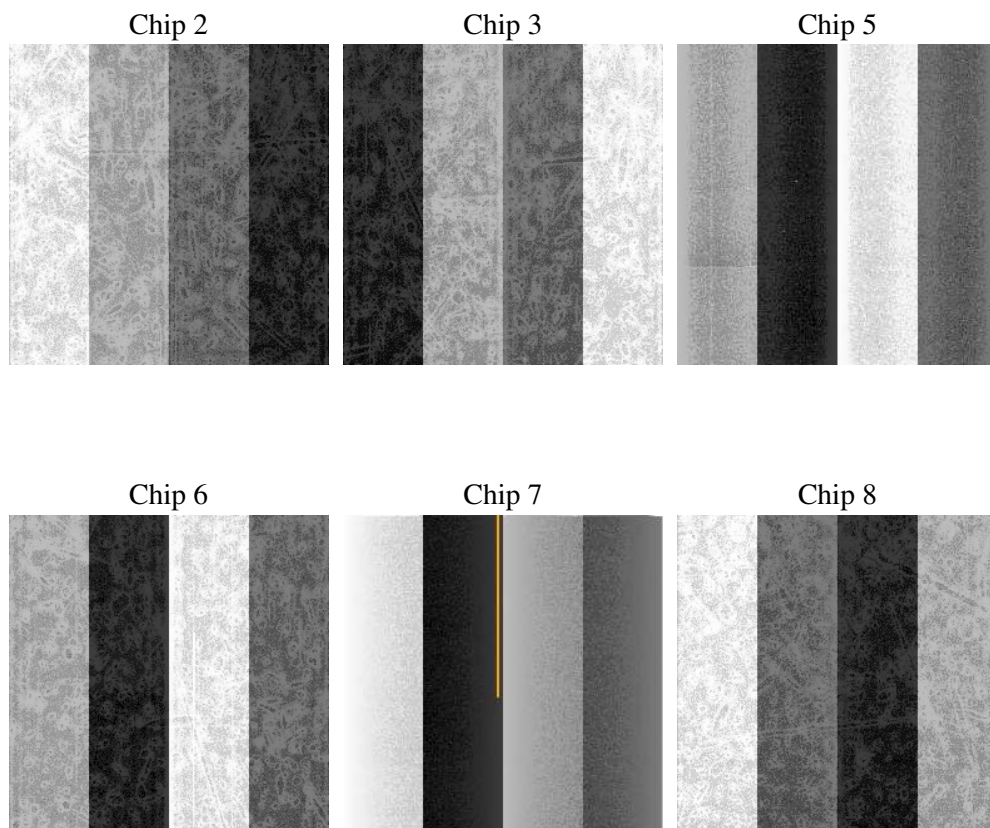
## 2 OBI

### 2.1 OBI

#### 2.1.1 Images



#### 2.1.2 Bias



### 2.1.3 Parameters

obi_num	1
ascdsver	7.6.7.2
caldsver	3.2.1
date	2006-04-29T07:34:48
revision	3

sched_exp_time	6386.000000
ontime	6349.1389916539
ontime2	6349.1389717162
ontime3	6345.8980013728
ontime5	6349.1389916539
ontime6	6349.1389717162
ontime7	6349.1389916539
ontime8	6349.1389916539
l1events	247008

### 2.1.4 Events

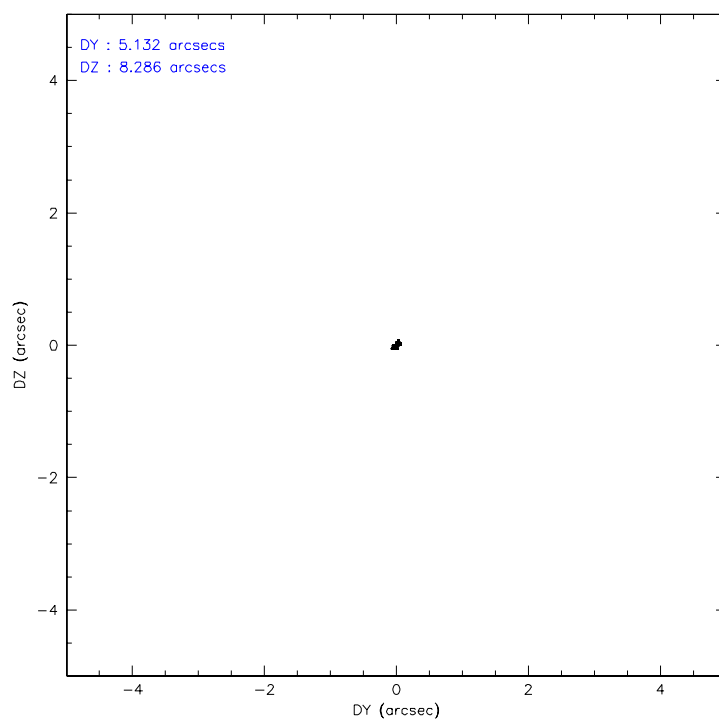
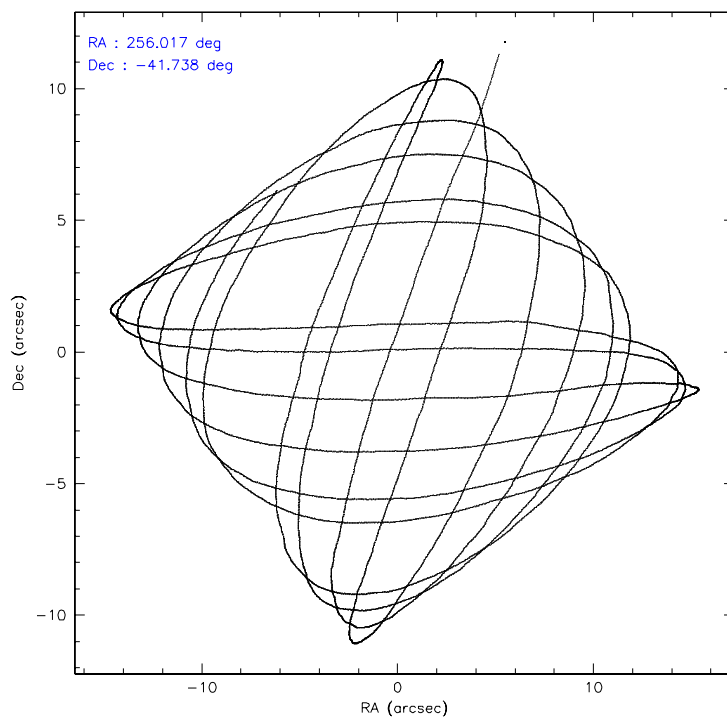
	ccd 2	ccd 3	ccd 5	ccd 6	ccd 7	ccd 8
level 1 events	41660	34849	44137	37814	42776	45772
rejected events	37826	31370	21563	33431	19174	34820
rejected %	90%	90%	48%	88%	44%	76%

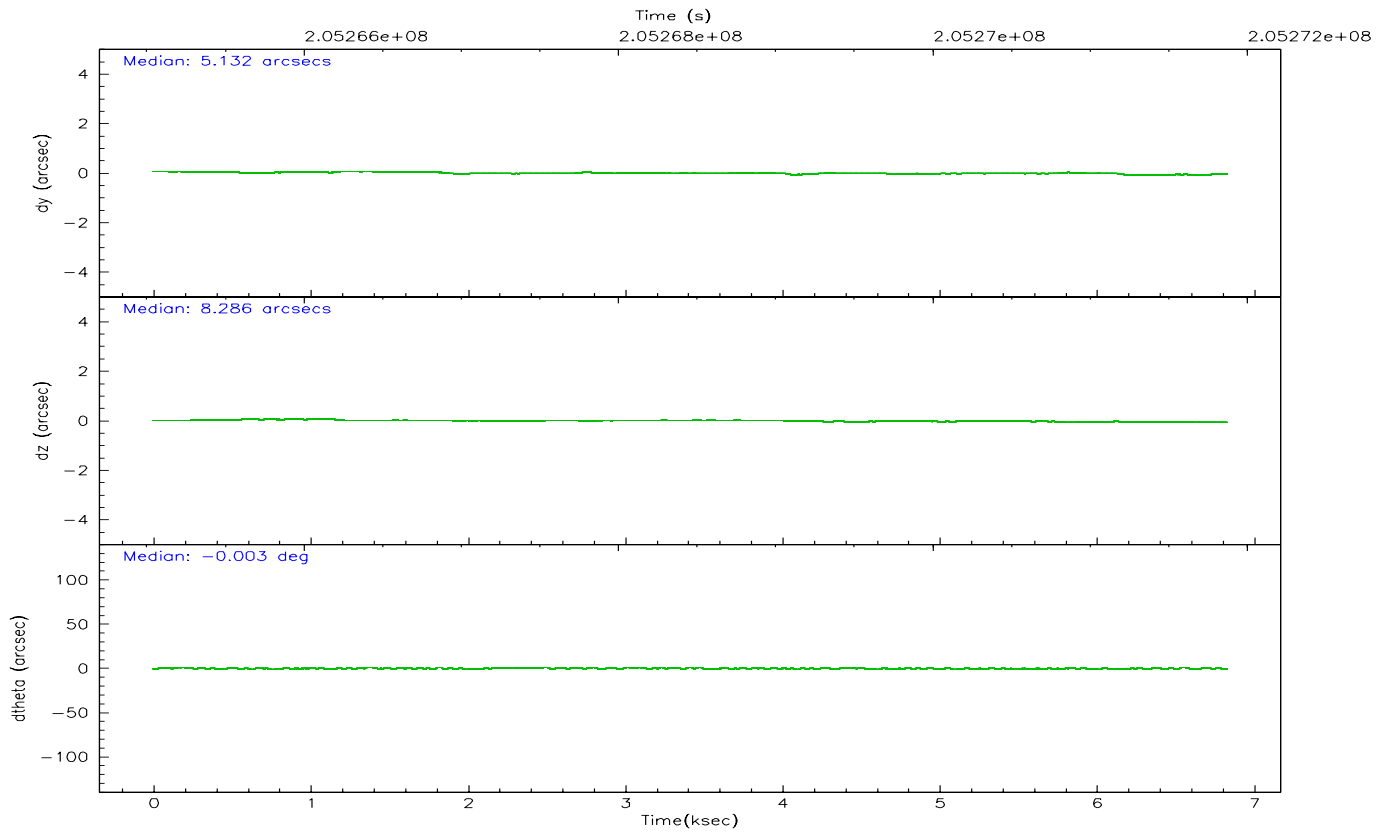
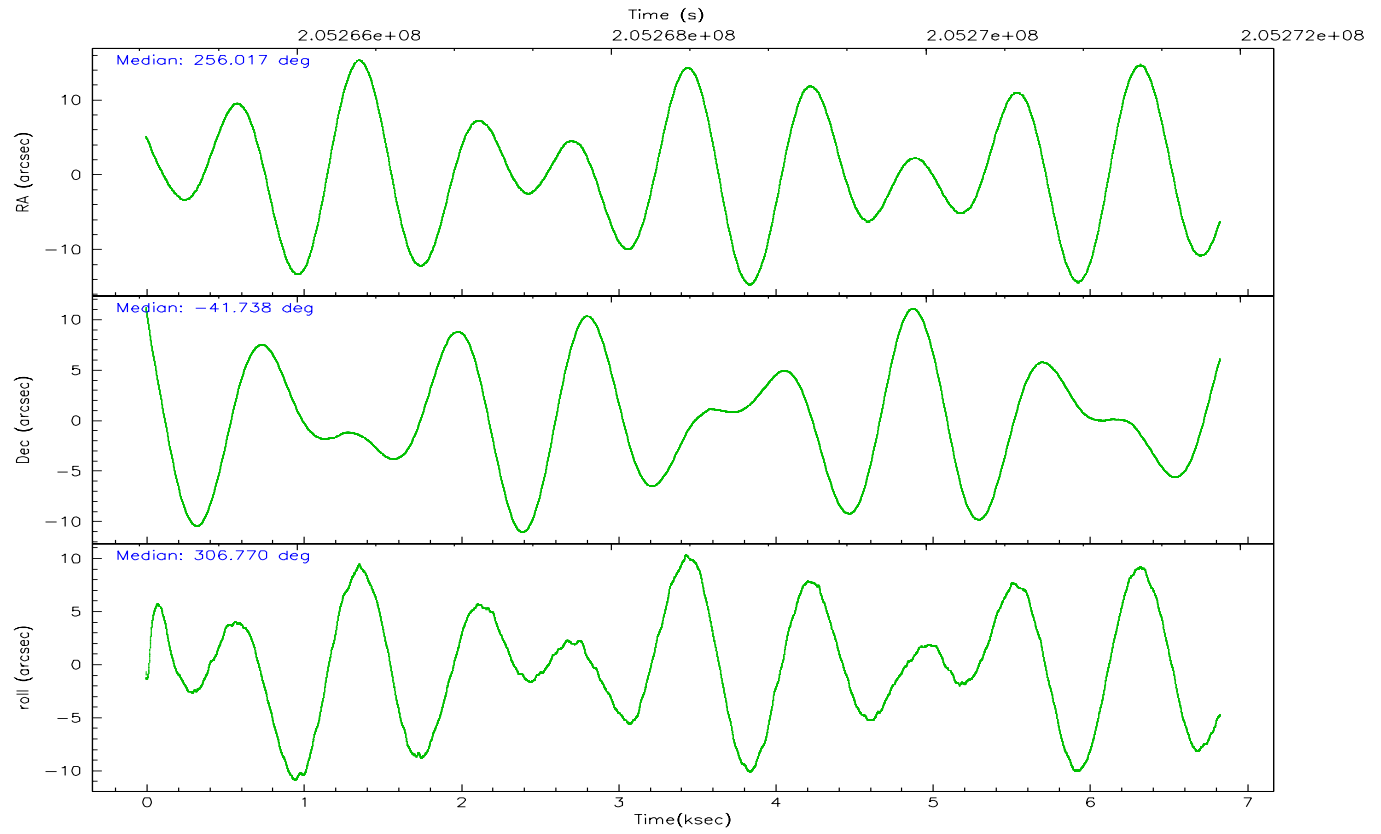
	ccd 2	ccd 3	ccd 5	ccd 6	ccd 7	ccd 8
grade 0 events	1505	1383	1864	1832	2221	3239
	3%	3%	4%	4%	5%	7%
grade 1 events	28	16	34	23	31	35
	0%	0%	0%	0%	0%	0%
grade 2 events	946	680	7163	878	6411	2530
	2%	1%	16%	2%	14%	5%
grade 3 events	375	414	651	453	1817	1174
	0%	1%	1%	1%	4%	2%
grade 4 events	407	378	570	420	1718	1080
	0%	1%	1%	1%	4%	2%
grade 5 events	1083	1196	2434	1217	2871	1891
	2%	3%	5%	3%	6%	4%
grade 6 events	601	624	12342	801	11446	2934
	1%	1%	27%	2%	26%	6%
grade 7 events	36715	30158	19079	32190	16261	32889
	88%	86%	43%	85%	38%	71%

## 2.2 Compared Parameters

Parameter	Planned	Actual	Parameter	Planned	Actual
Instrument	ACIS	ACIS	Obspar format version number	6	6
Detector	ACIS-235678	ACIS-235678	Obspar file type	PREDICTED	ACTUAL
Grating	NONE	NONE	Obspar update status	NONE	UPDATED
Data mode	VFAINT	VFAINT	On-chip summing requested	N	N
Observation mode	POINTING	POINTING	Subarray requested	NONE	NONE
Pointing RA	255.983380	256.017094391569	Alternating exposures requested	N	N
Pointing Dec	-41.727542	-41.73799545502204	Primary exposure time	0.000000	3.2
Pointing Roll	306.597253	306.7763166064041			
SIM focus pos (mm)	-0.684267	-0.6828225247311905			
SIM defocus (mm)	0	0.001444936568705701			
SIM translation stage pos (mm)	-190.132523	-190.1400660498719			
SIM translation stage offset (mm)	0	0.00754346686406393			
Observation start time	205265479.184000	205264386.09946			
Observation start date	2004-07-03T18:10:15	2004-07-03T17:53:06			
Observation end time	205271865.184000	205272293.97481			
Observation end date	2004-07-03T19:56:41	2004-07-03T20:04:53			
Read mode	TIMED	TIMED			

## 2.3 Aspect





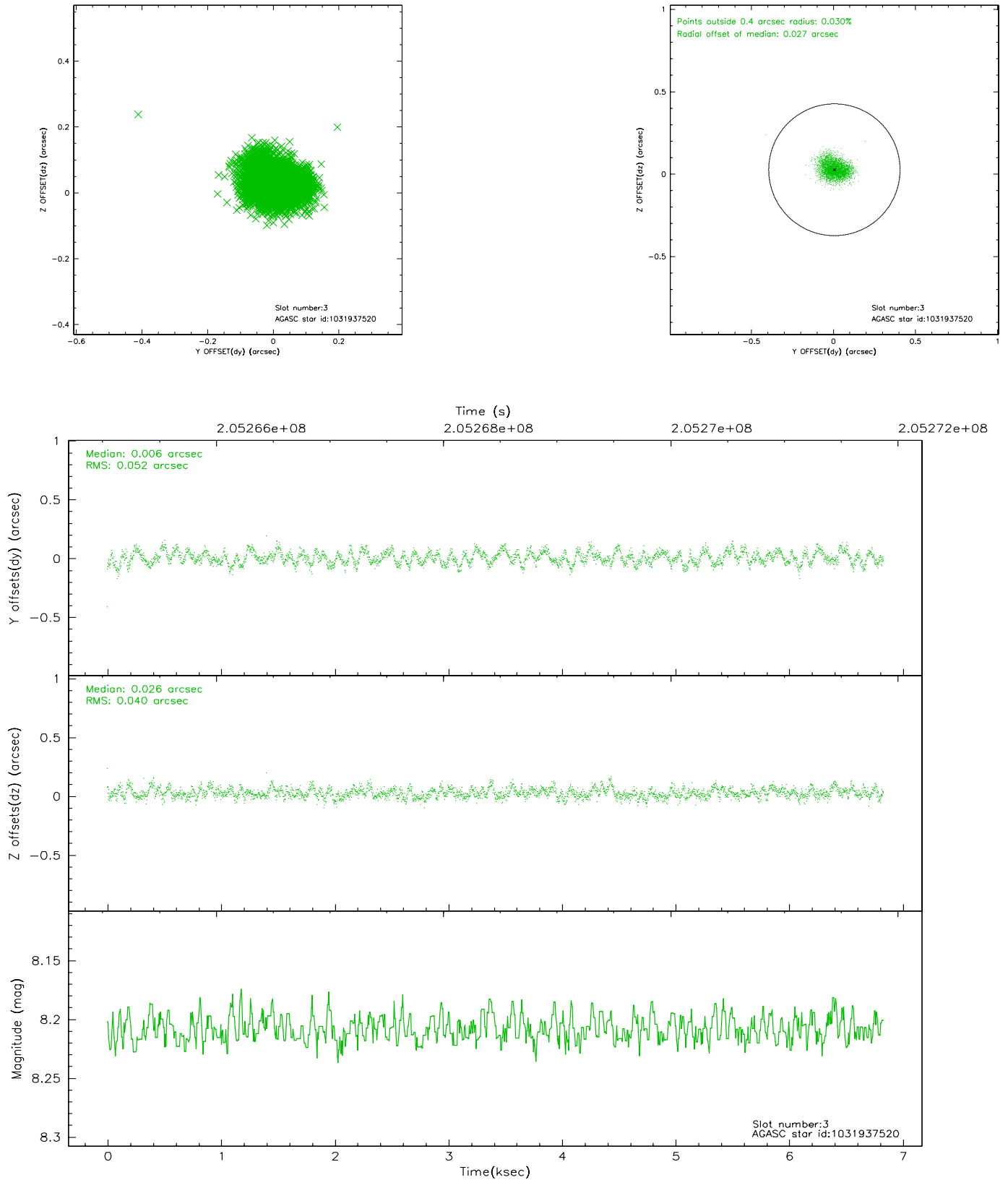
### Slot Statistics

slot	status	id	mag	n_pts	med_dy	med_dz	dr1	dr2	ra	dec	mean_y	mean_z
0	FID	ACIS-S-2	7.11	1667	-0.066	-0.033	0.005	0.009	0.000000	0.000000	-757.93	-1729.51
1	FID	ACIS-S-4	7.21	1667	0.035	0.050	0.006	0.010	0.000000	0.000000	2155.10	178.14
2	FID	ACIS-S-6	7.35	1667	0.003	-0.009	0.007	0.011	0.000000	0.000000	405.26	816.47
3	GUIDE	1031937520	8.21	3334	0.006	0.026	0.070	0.110	256.333720	-41.104608	-1232.54	2099.09
4	GUIDE	1032458288	9.12	3331	-0.098	0.038	0.081	0.128	255.516912	-42.294354	900.29	-2214.77
5	GUIDE	1032462424	8.02	3334	-0.091	0.014	0.064	0.102	257.030418	-41.723974	1681.30	2254.38
6	GUIDE	1032466120	9.15	3334	0.001	-0.040	0.079	0.128	255.616572	-41.318828	-1770.27	80.33
7	GUIDE	1032459328	9.30	3328	0.177	-0.039	0.082	0.135	256.299221	-42.004804	1306.09	82.73

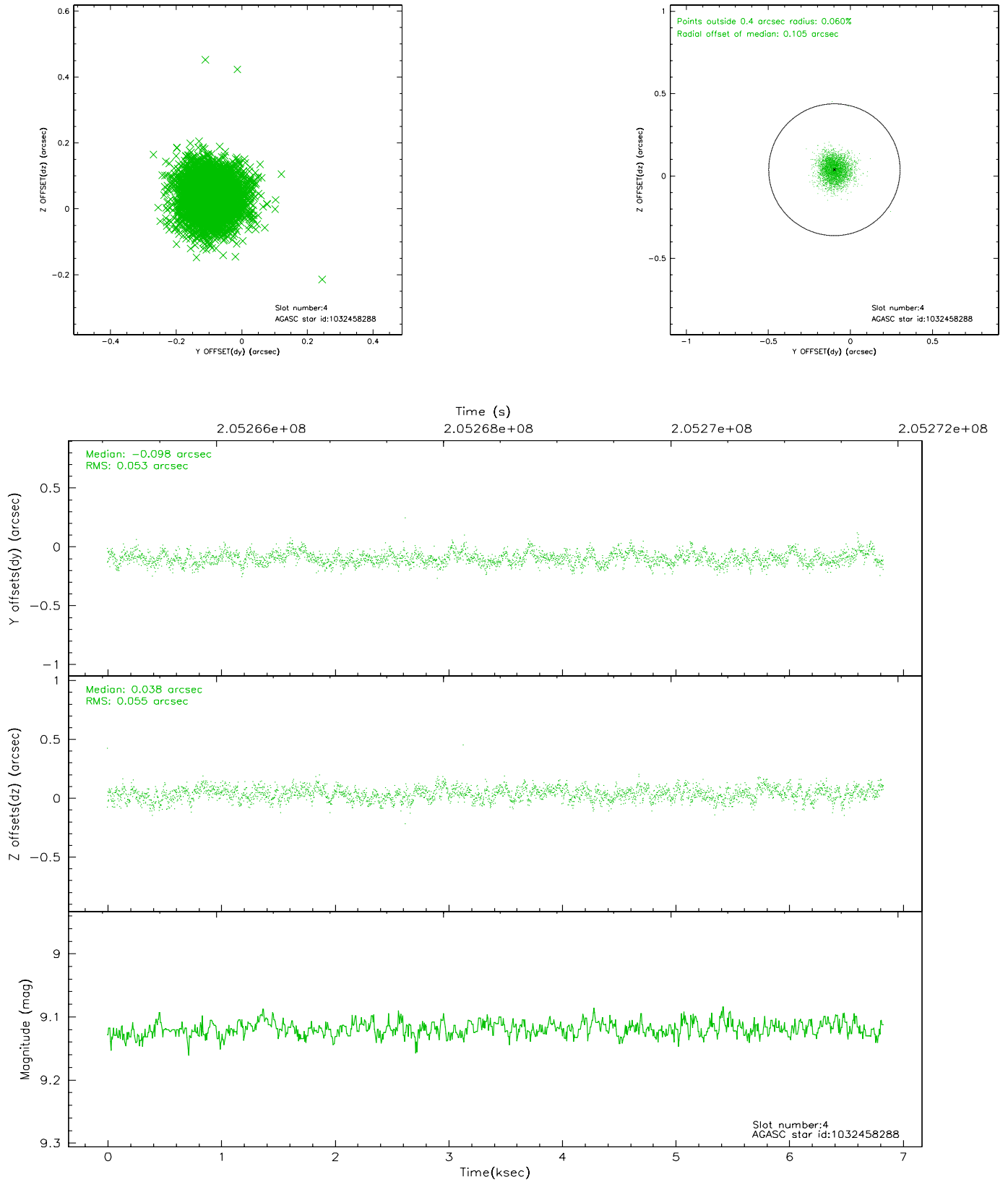


## 2.4 Star Slots

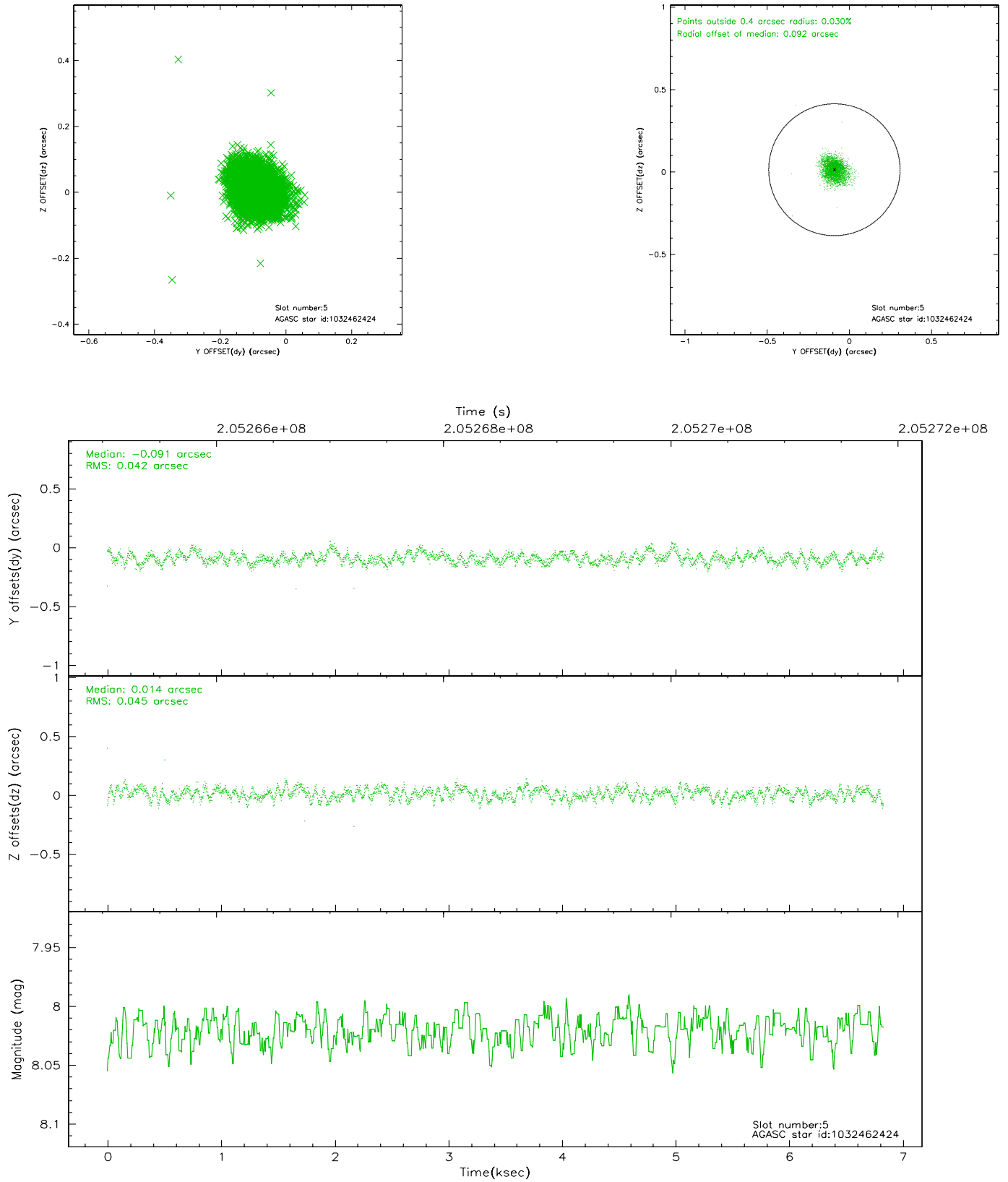
### 2.4.1 Slot 3



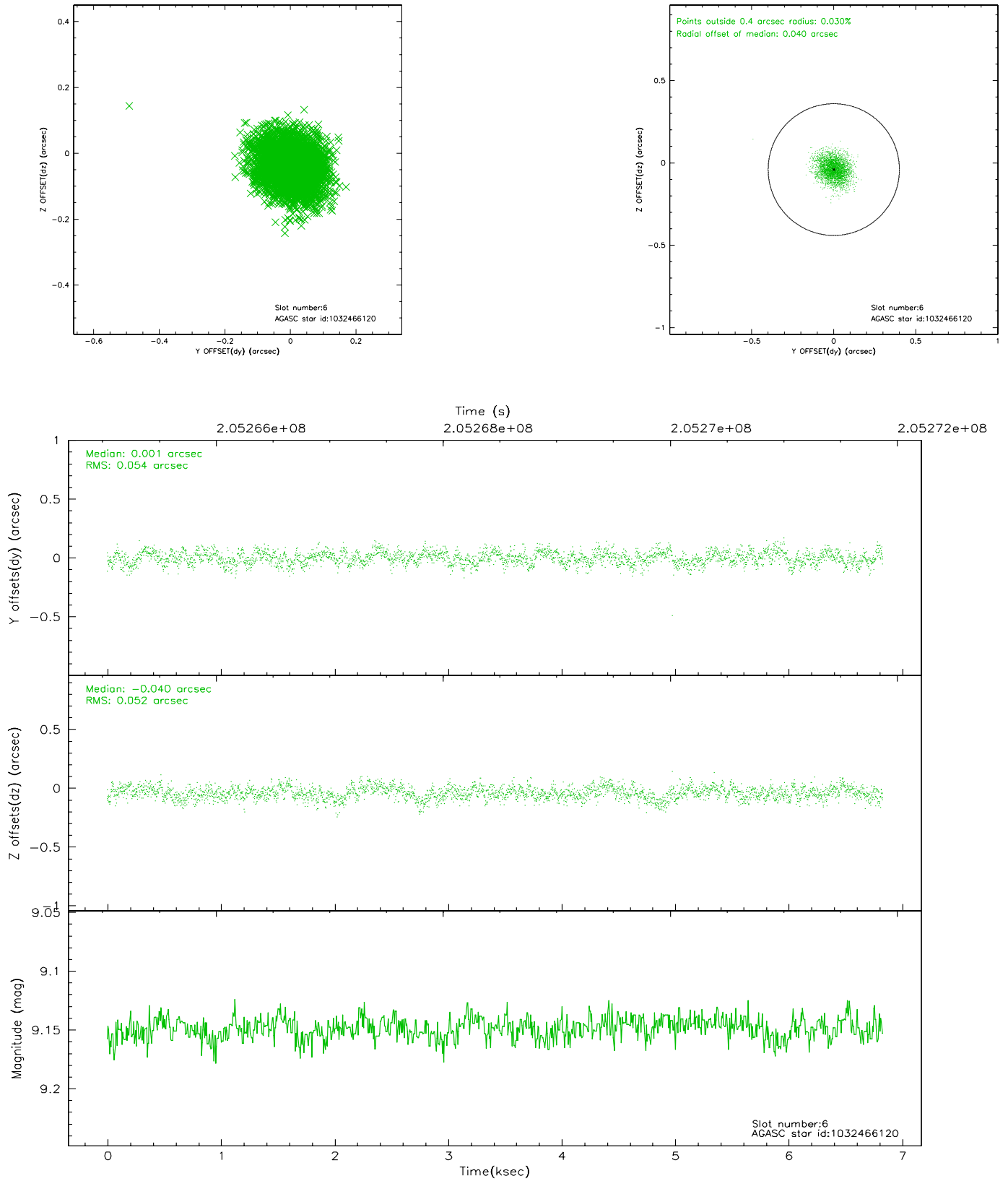
## 2.4.2 Slot 4



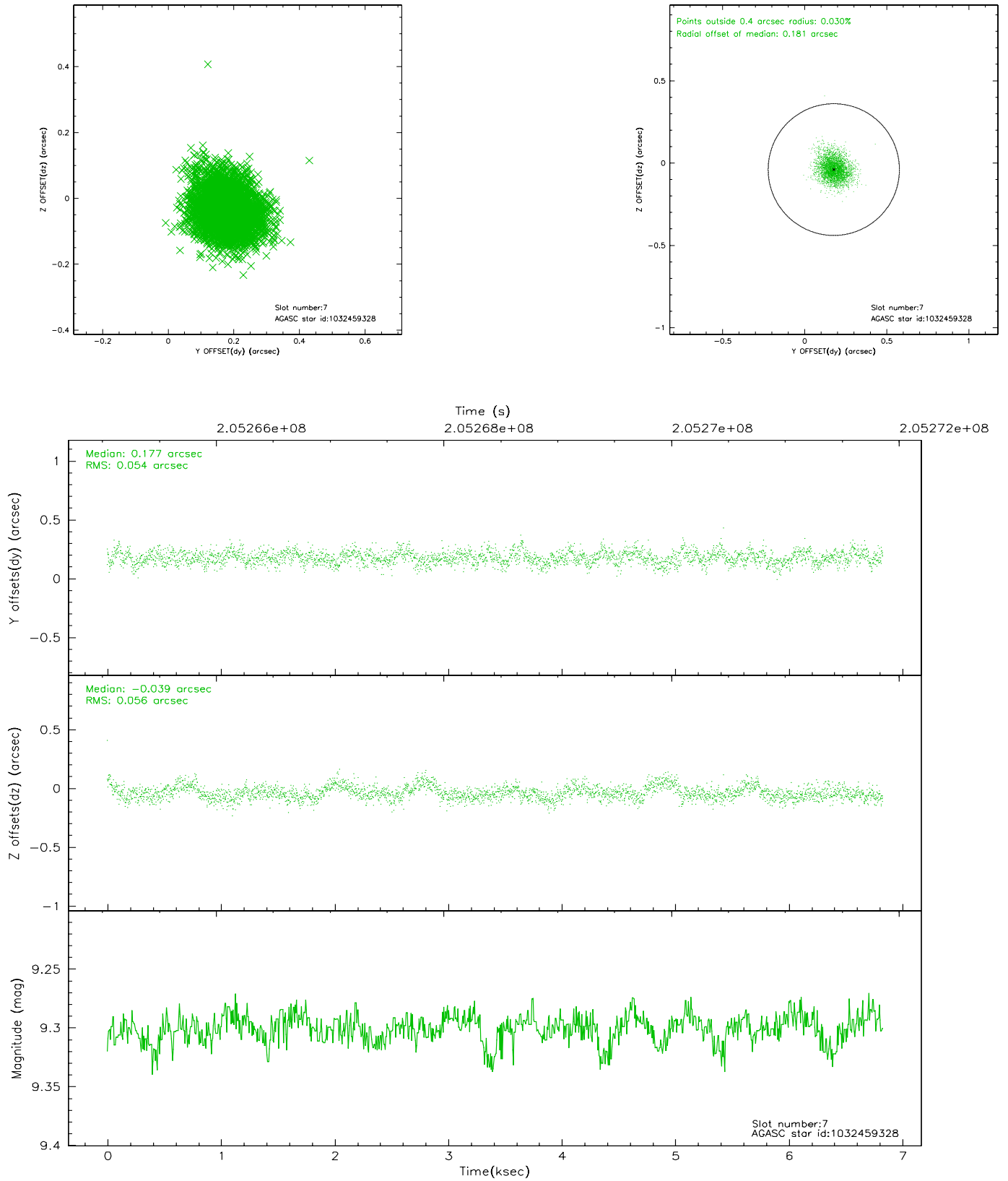
### 2.4.3 Slot 5



## 2.4.4 Slot 6

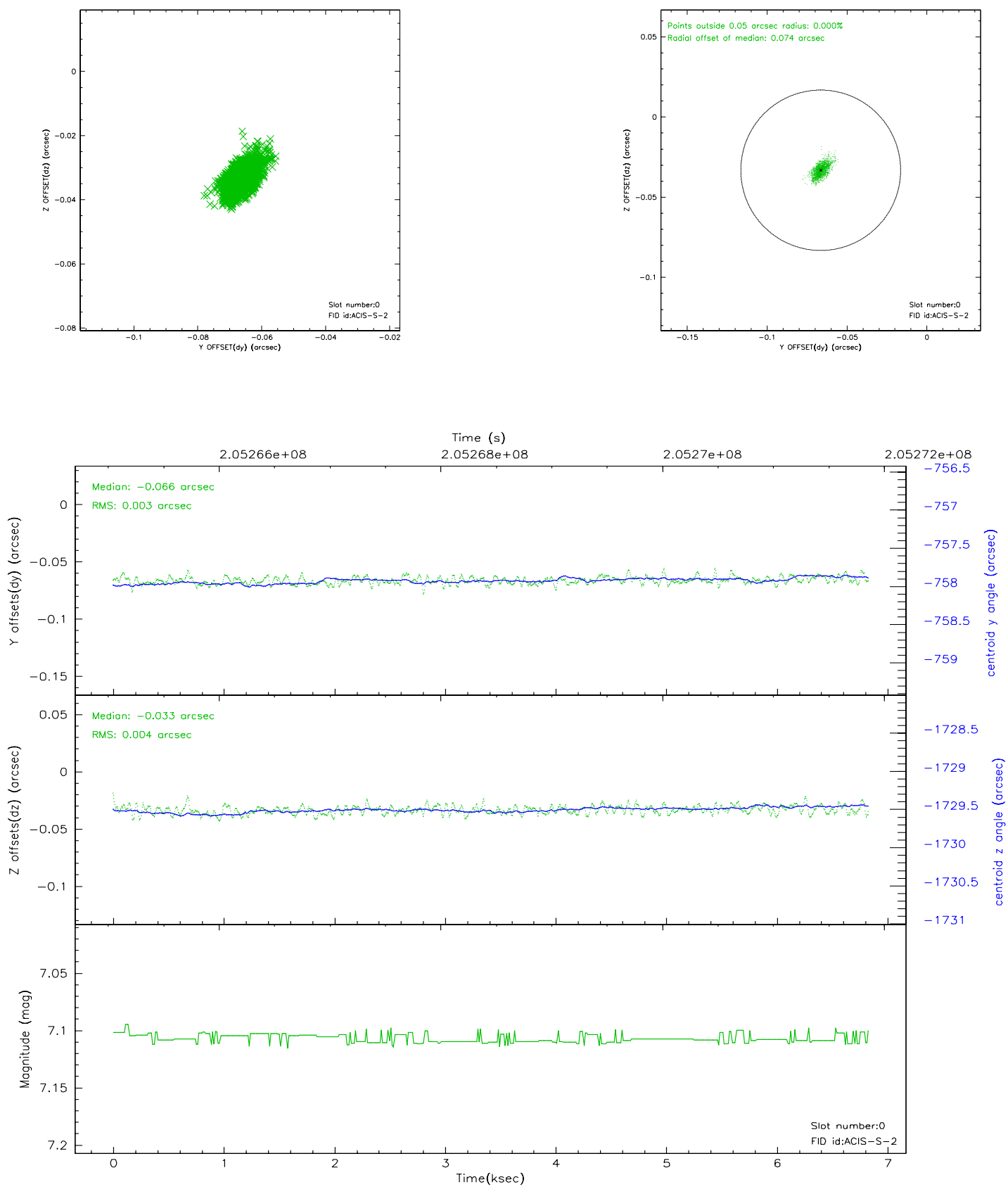


## 2.4.5 Slot 7

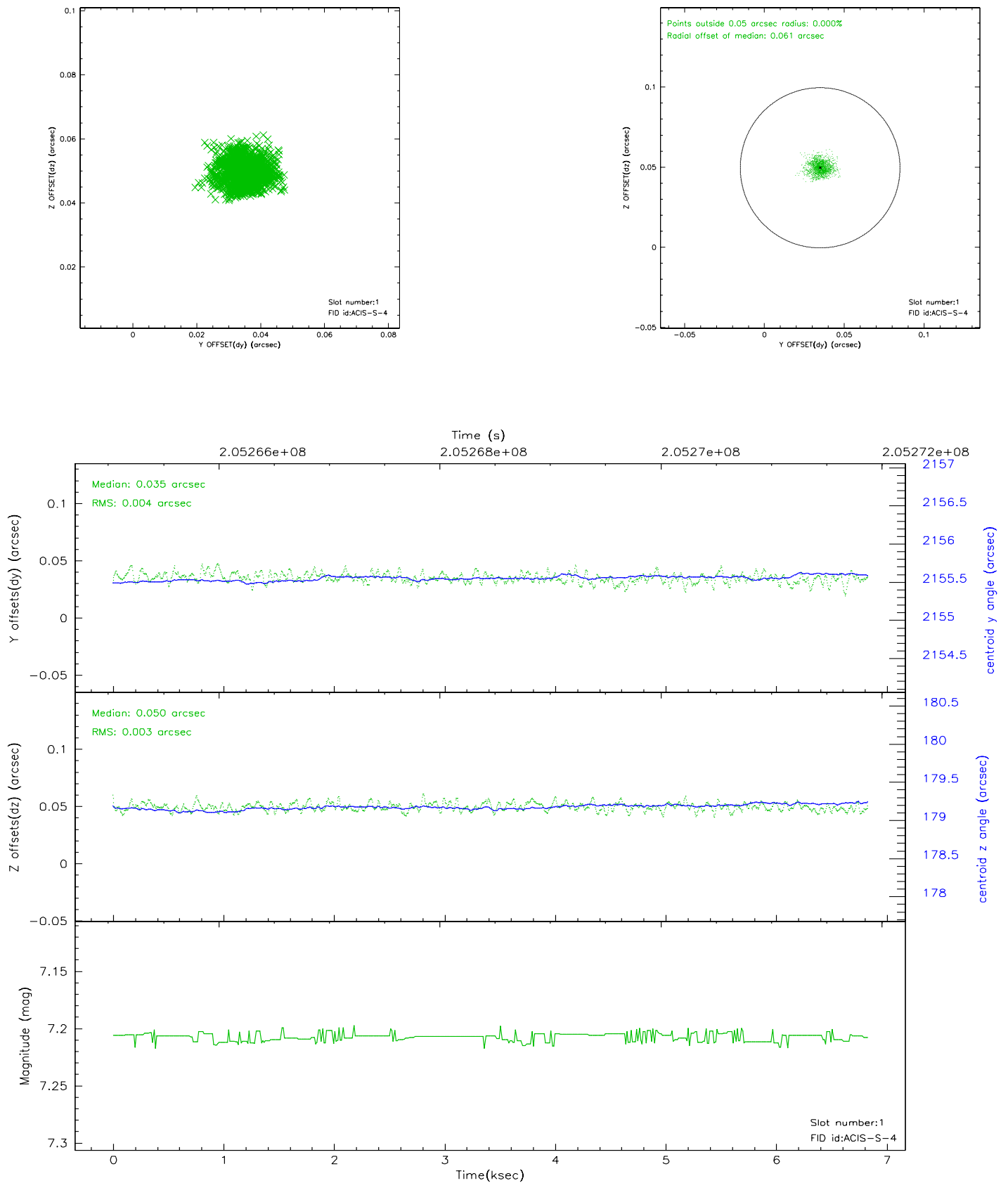


## 2.5 FID Slots

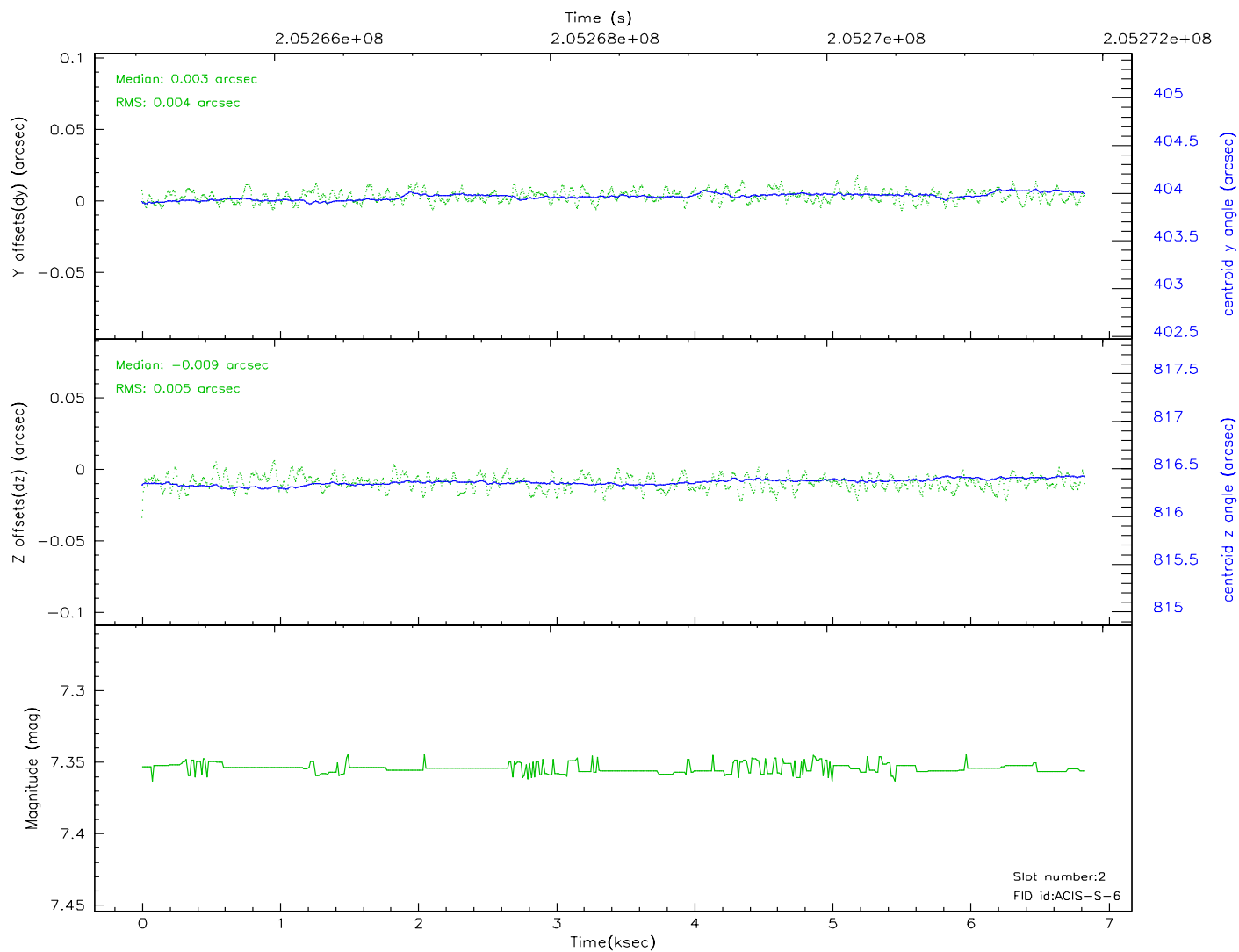
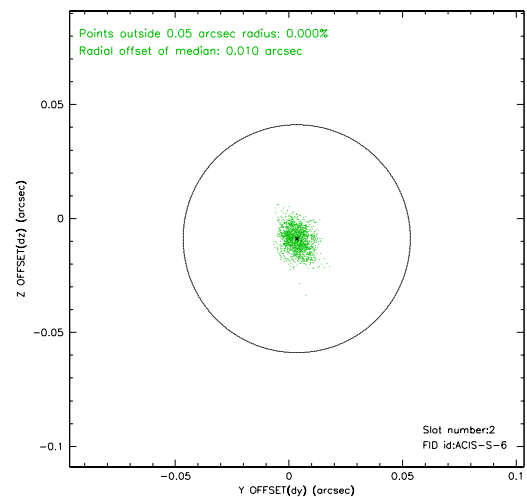
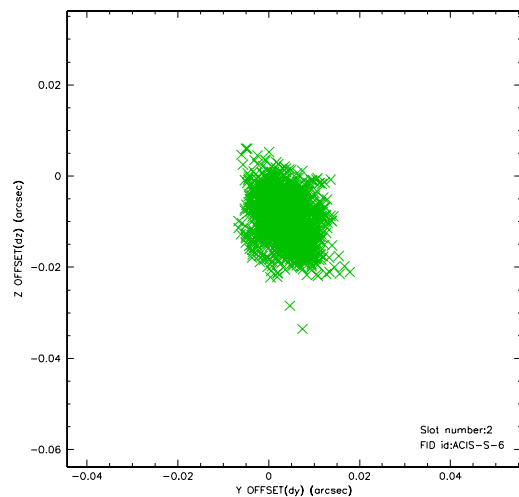
### 2.5.1 Slot 0



## 2.5.2 Slot 1

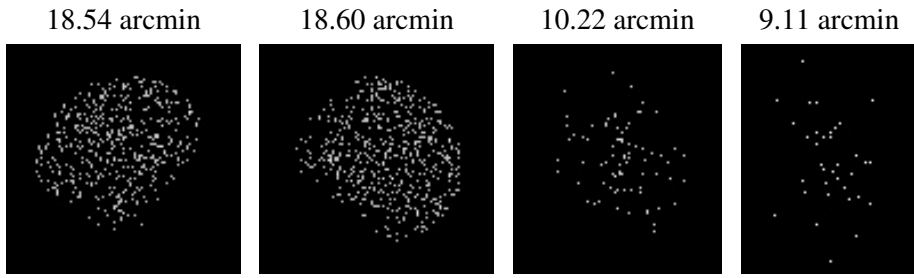


### 2.5.3 Slot 2





### 3 Point Sources



## A Summary

### A.1 Status

V&V Scientist	Jen Lauer
V&V Date (YYYY-MM-DD)	2006.04.30
V&V Edition	1
V&V Disposition and Status	OK
V&V Charge Time	6.345

### A.2 Comments