

# V&V Reference Report

## L2 ASCDS Version : 7.6.7.2

Observation 5306 - L2 Version 001  
Chandra X-Ray Center

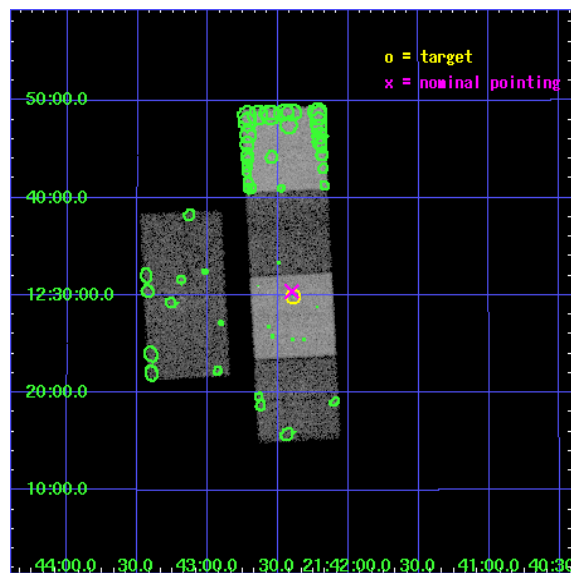
L2 Processing Date : May 27 2006

## Contents

<b>1</b>	<b>Front</b>	<b>2</b>
<b>2</b>	<b>OBI</b>	<b>3</b>
2.1	OBI . . . . .	3
2.1.1	Images . . . . .	3
2.1.2	Bias . . . . .	3
2.1.3	Parameters . . . . .	4
2.1.4	Events . . . . .	4
2.2	Compared Parameters . . . . .	5
2.3	Aspect . . . . .	6
2.4	Star Slots . . . . .	9
2.4.1	Slot 3 . . . . .	9
2.4.2	Slot 4 . . . . .	10
2.4.3	Slot 5 . . . . .	11
2.4.4	Slot 6 . . . . .	12
2.4.5	Slot 7 . . . . .	13
2.5	FID Slots . . . . .	14
2.5.1	Slot 0 . . . . .	14
2.5.2	Slot 1 . . . . .	15
2.5.3	Slot 2 . . . . .	16
<b>3</b>	<b>Point Sources</b>	<b>17</b>
<b>A</b>	<b>Summary</b>	<b>18</b>
A.1	Status . . . . .	18
A.2	Comments . . . . .	18

# 1 Front

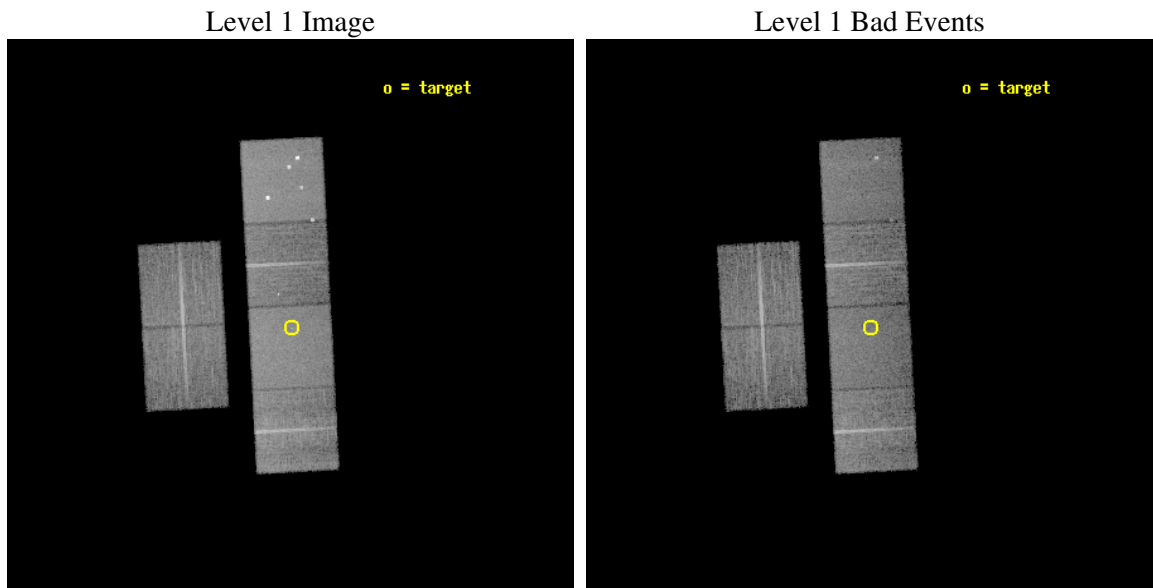
seq_num	500505
obs_id	5306
title	Prompt Observation of the Type Ib/c Supernova 2001em
observer	Dr. David Pooley
object	SN 2001em
dtcycle	0
cycle	P
ra_targ	325.598333
dec_targ	12.497306
ra_nom	325.60054290634
dec_nom	12.506727908807
roll_nom	87.035039609757
revision	2
ontime	14755.199945033
livetime	14568.360718814
ontime2	14755.199945033
ontime3	14755.199945033
ontime5	14755.199945033
ontime6	14755.199945033
ontime7	14755.199945033
ontime8	14751.959044278
l2events	151365



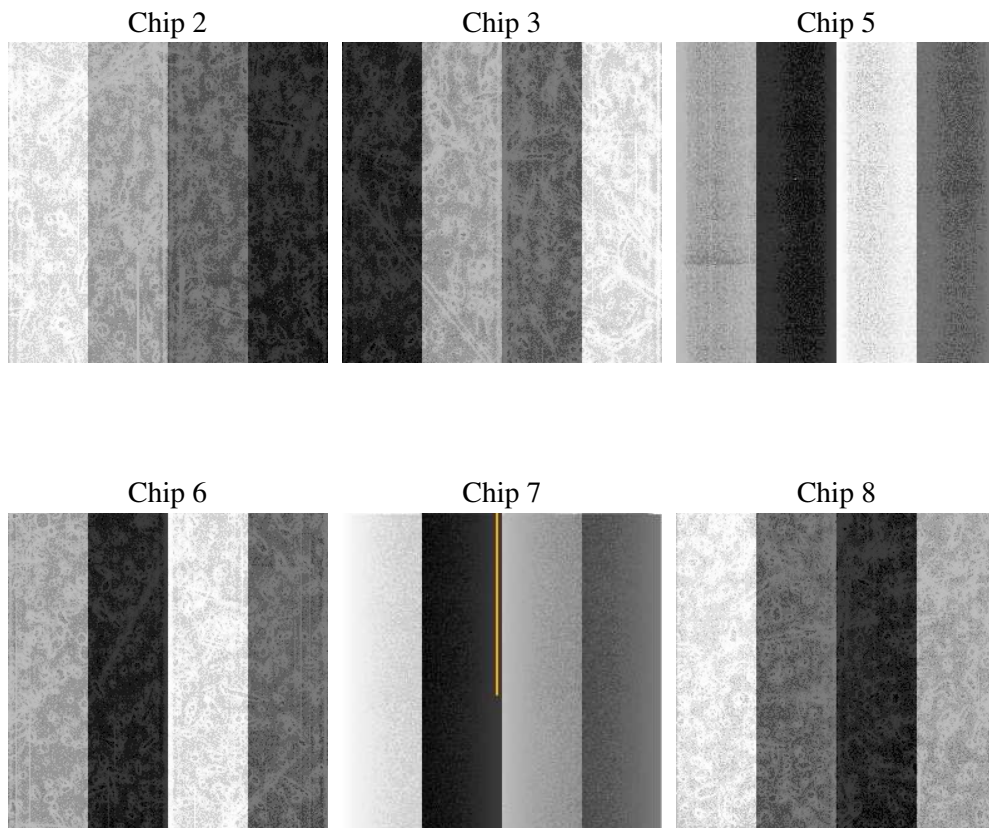
## 2 OBI

### 2.1 OBI

#### 2.1.1 Images



#### 2.1.2 Bias



### 2.1.3 Parameters

obi_num	0
ascdsver	7.6.7.2
caldbver	3.2.2
date	2006-05-27T10:40:48
revision	2

sched_exp_time	15000.000000
ontime	14759.525848538
ontime2	14759.525848538
ontime3	14759.525818646
ontime5	14759.525848538
ontime6	14759.525818646
ontime7	14759.525848538
ontime8	14756.284848273
l1events	703124

### 2.1.4 Events

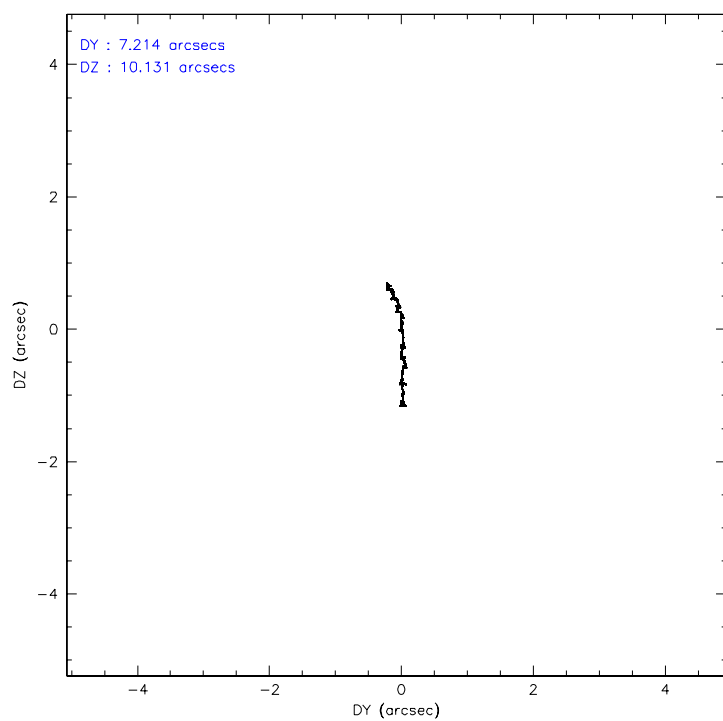
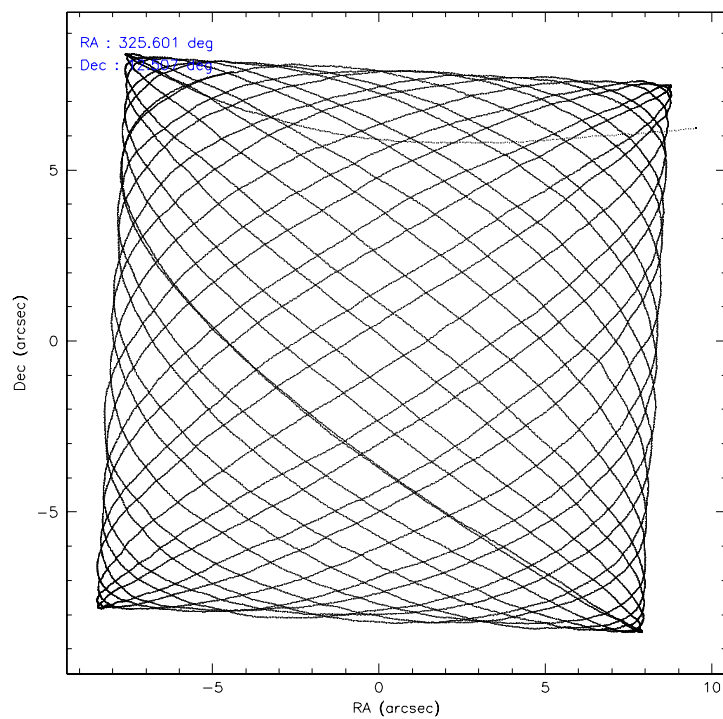
	ccd 2	ccd 3	ccd 5	ccd 6	ccd 7	ccd 8
level 1 events	99908	94109	153012	98459	132176	125460
rejected events	88091	82438	81878	86352	81613	100274
rejected %	88%	87%	53%	87%	61%	79%

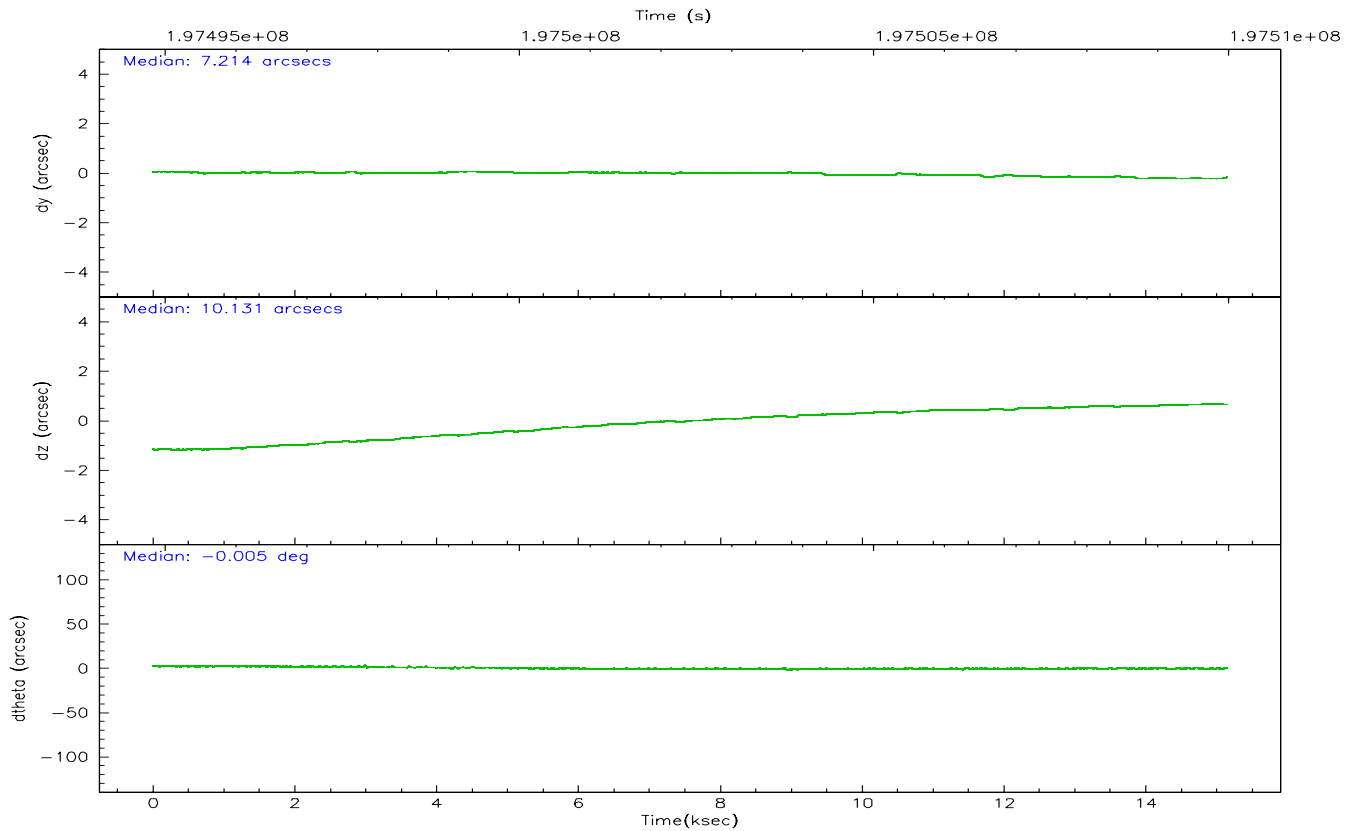
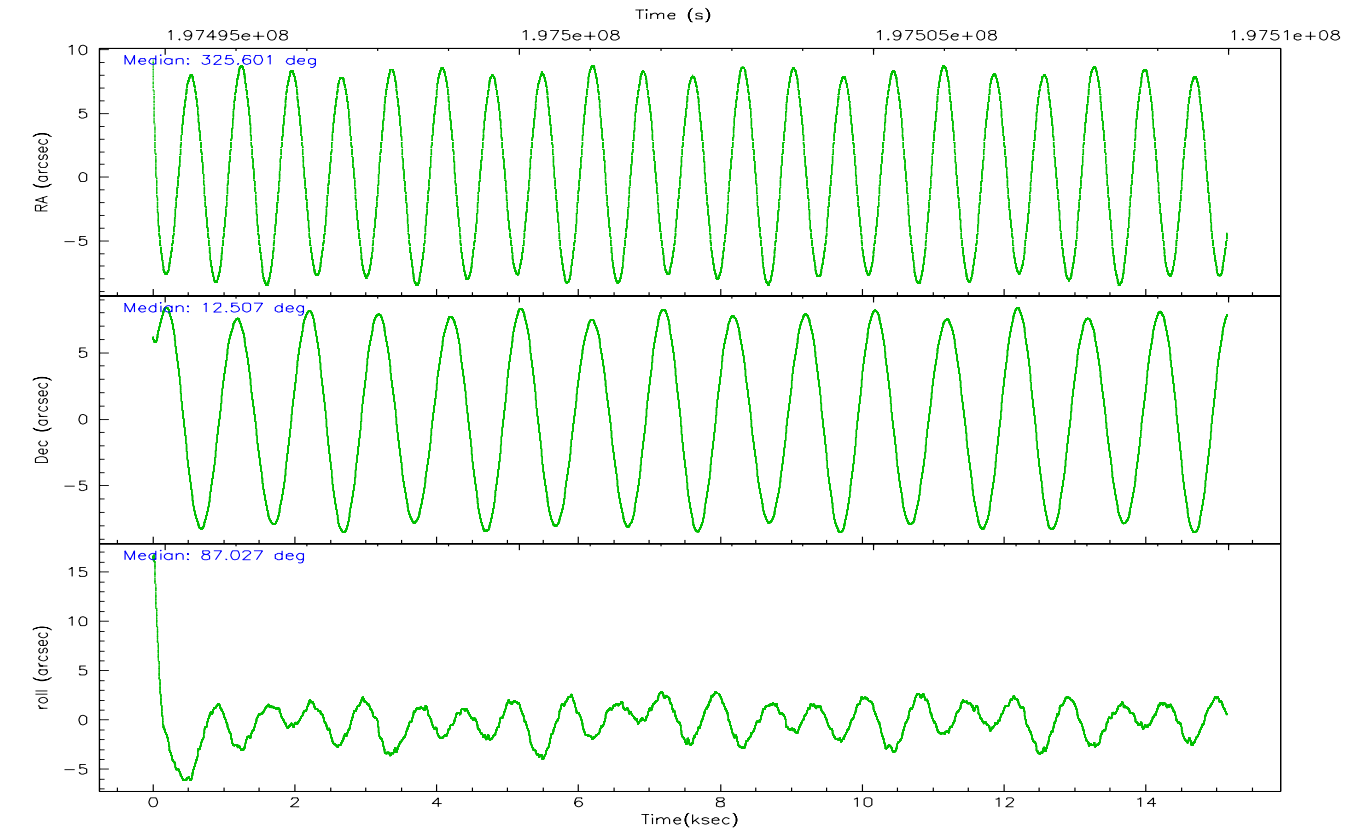
	ccd 2	ccd 3	ccd 5	ccd 6	ccd 7	ccd 8
grade 0 events	5234	5284	10067	4990	3228	7874
	5%	5%	6%	5%	2%	6%
grade 1 events	65	64	646	55	76	72
	0%	0%	0%	0%	0%	0%
grade 2 events	2384	2211	21885	2456	12576	5522
	2%	2%	14%	2%	9%	4%
grade 3 events	1094	1088	1433	1215	2597	2565
	1%	1%	0%	1%	1%	2%
grade 4 events	1107	1157	1422	1071	2464	2388
	1%	1%	0%	1%	1%	1%
grade 5 events	3788	4356	7031	4583	8689	5714
	3%	4%	4%	4%	6%	4%
grade 6 events	2003	1938	36355	2380	29726	6849
	2%	2%	23%	2%	22%	5%
grade 7 events	84233	78011	74173	81709	72820	94476
	84%	82%	48%	82%	55%	75%

## 2.2 Compared Parameters

Parameter	Planned	Actual	Parameter	Planned	Actual
Instrument	ACIS	ACIS	Obspar format version number	6	6
Detector	ACIS-235678	ACIS-235678	Obspar file type	PREDICTED	ACTUAL
Grating	NONE	NONE	Obspar update status	NONE	UPDATED
Data mode	FAINT	FAINT	On-chip summing requested	N	N
Observation mode	POINTING	POINTING	Subarray requested	NONE	NONE
Pointing RA	325.613583	325.6005429063356	Alternating exposures requested	N	N
Pointing Dec	12.482643	12.50672790880711	Primary exposure time	0.000000	3.2
Pointing Roll	86.875589	87.03503960975748			
SIM focus pos (mm)	-0.684267	-0.6828225247311905			
SIM defocus (mm)	0	0.001444936568705701			
SIM translation stage pos (mm)	-190.132523	-190.1400660498719			
SIM translation stage offset (mm)	0	0.00754346686406393			
Observation start time	197494981.184000	197493843.33133			
Observation start date	2004-04-04T19:41:57	2004-04-04T19:24:03			
Observation end time	197509981.184000	197510572.86957			
Observation end date	2004-04-04T23:51:57	2004-04-05T00:02:52			
Read mode	TIMED	TIMED			

## 2.3 Aspect



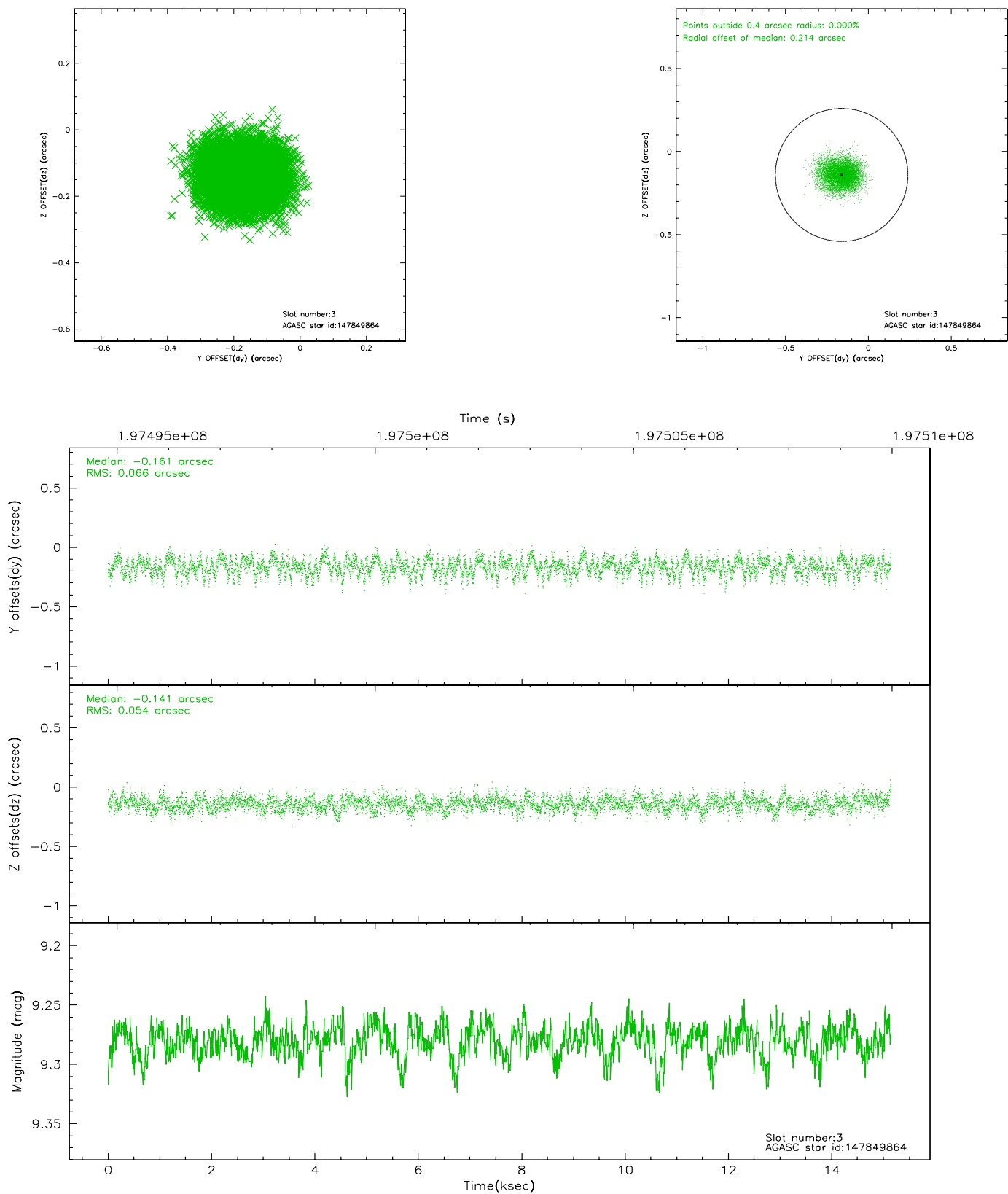


### Slot Statistics

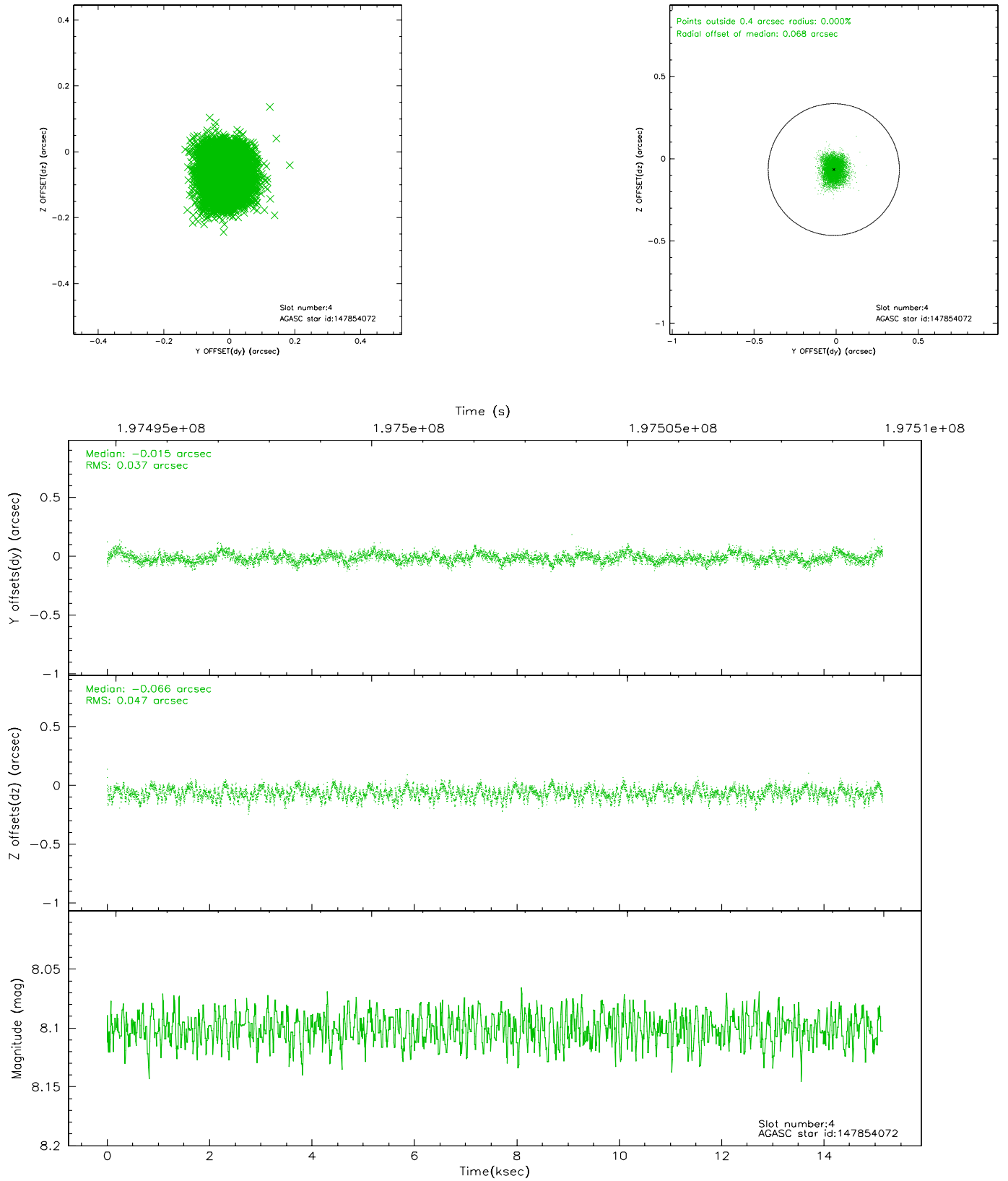
slot	status	id	mag	n_pts	med_dy	med_dz	dr1	dr2	ra	dec	mean_y	mean_z
0	FID	ACIS-S-2	7.10	3694	-0.035	0.008	0.015	0.028	0.000000	0.000000	-759.94	-1731.27
1	FID	ACIS-S-4	7.20	3693	0.026	0.014	0.008	0.014	0.000000	0.000000	2153.23	176.97
2	FID	ACIS-S-5	7.23	3696	-0.025	-0.015	0.016	0.028	0.000000	0.000000	-1812.42	170.88
3	GUIDE	147849864	9.28	7382	-0.161	-0.141	0.091	0.146	325.017652	12.996291	1734.56	2188.40
4	GUIDE	147854072	8.10	7384	-0.015	-0.066	0.064	0.103	325.349490	12.755754	931.82	979.95
5	GUIDE	147991784	7.94	7391	0.080	0.108	0.053	0.087	325.826731	12.518355	169.68	-741.01
6	GUIDE	147995336	8.76	7388	-0.171	0.230	0.084	0.136	326.176555	13.042686	2123.14	-1861.10
7	GUIDE	147864216	9.17	7382	0.266	-0.132	0.089	0.141	325.021145	12.092394	-1513.90	2005.45

## 2.4 Star Slots

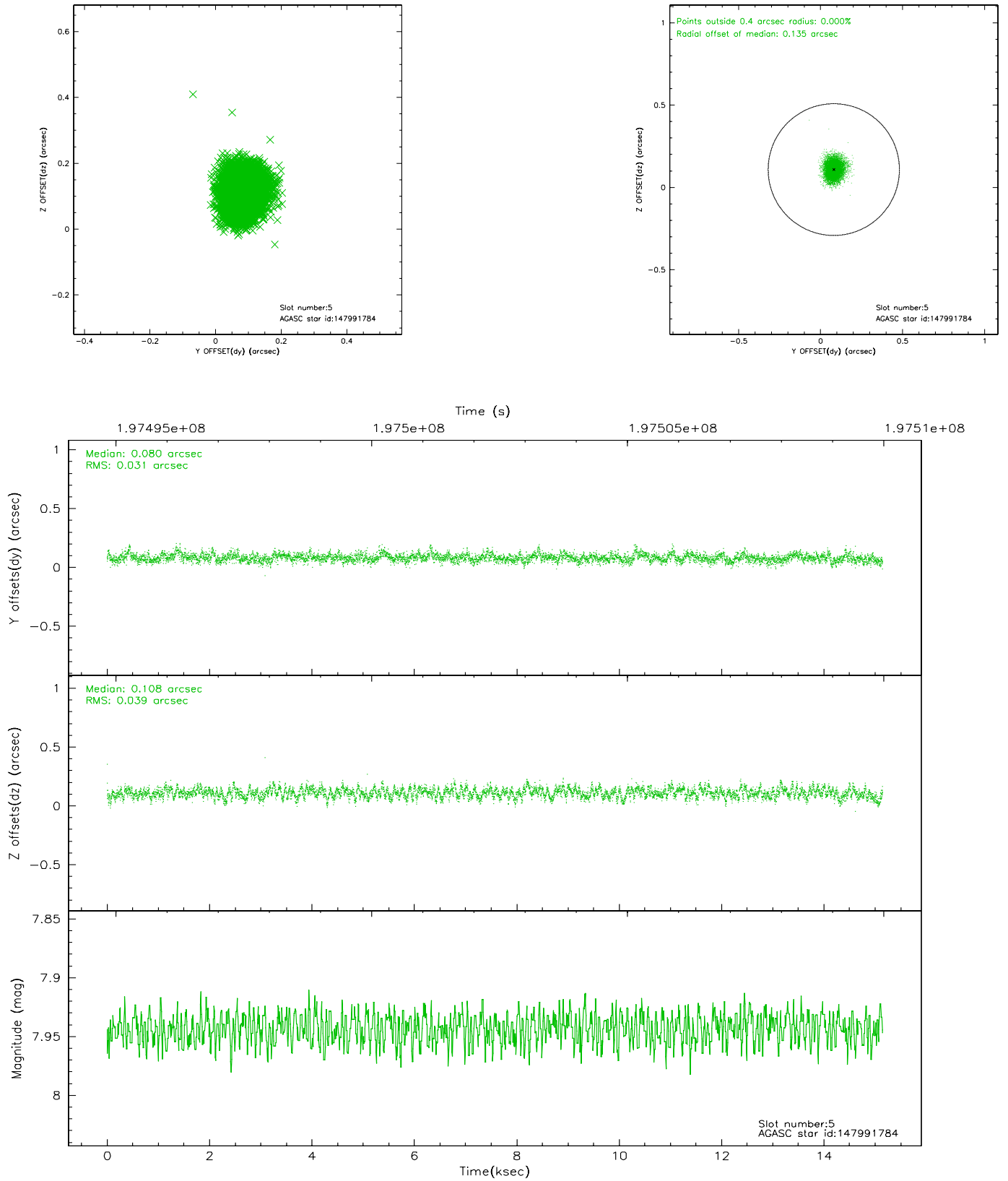
### 2.4.1 Slot 3



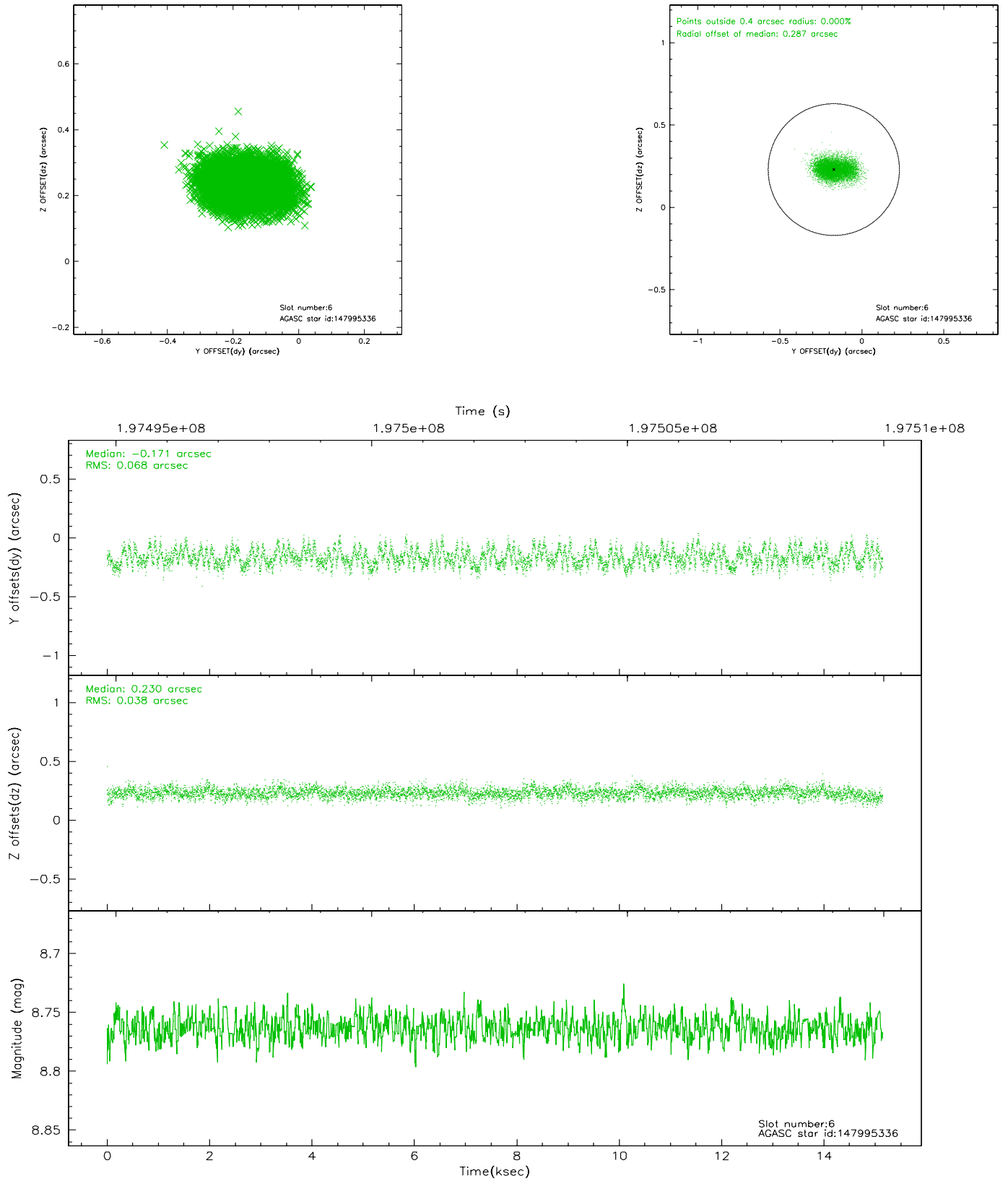
## 2.4.2 Slot 4



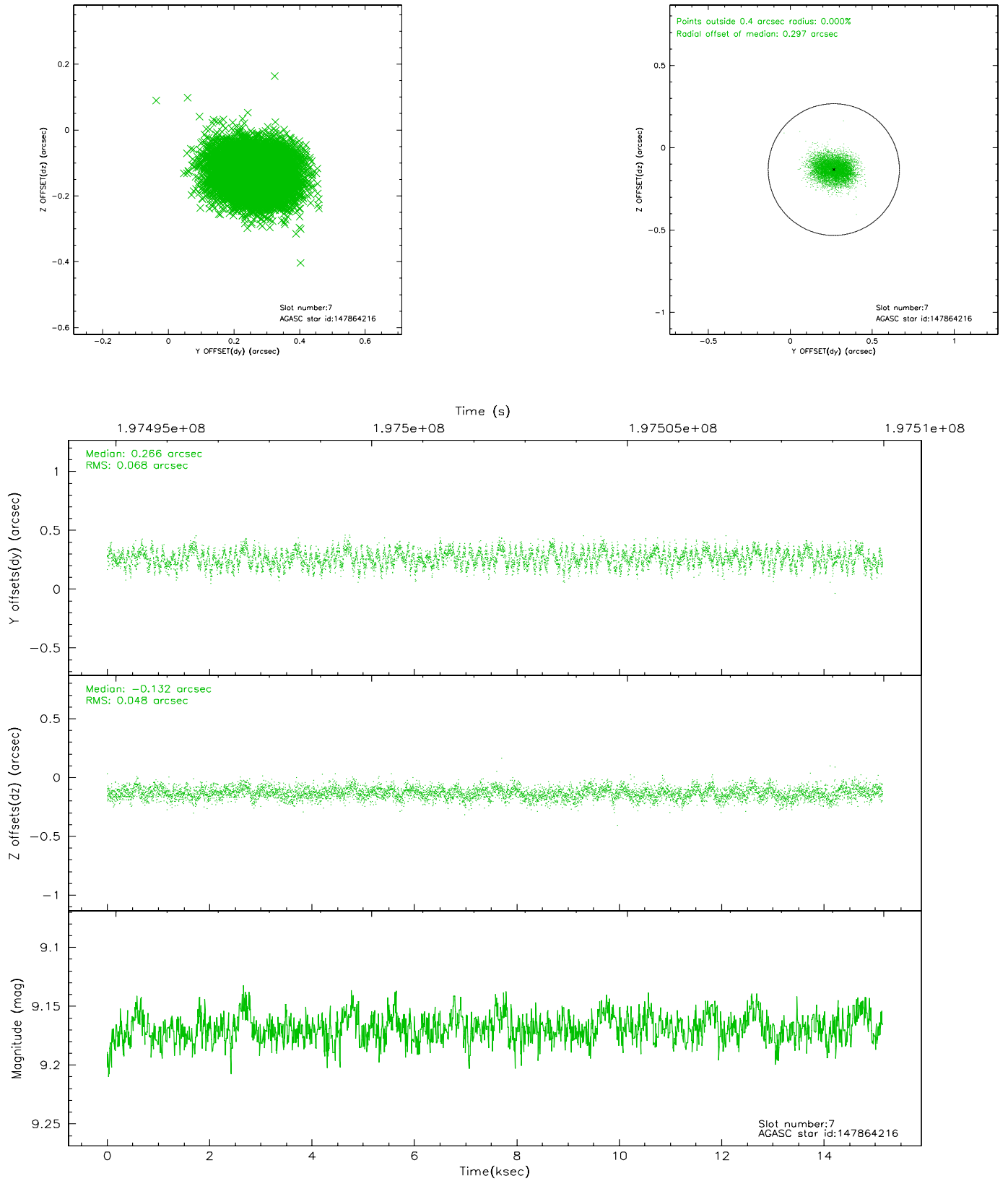
### 2.4.3 Slot 5



## 2.4.4 Slot 6

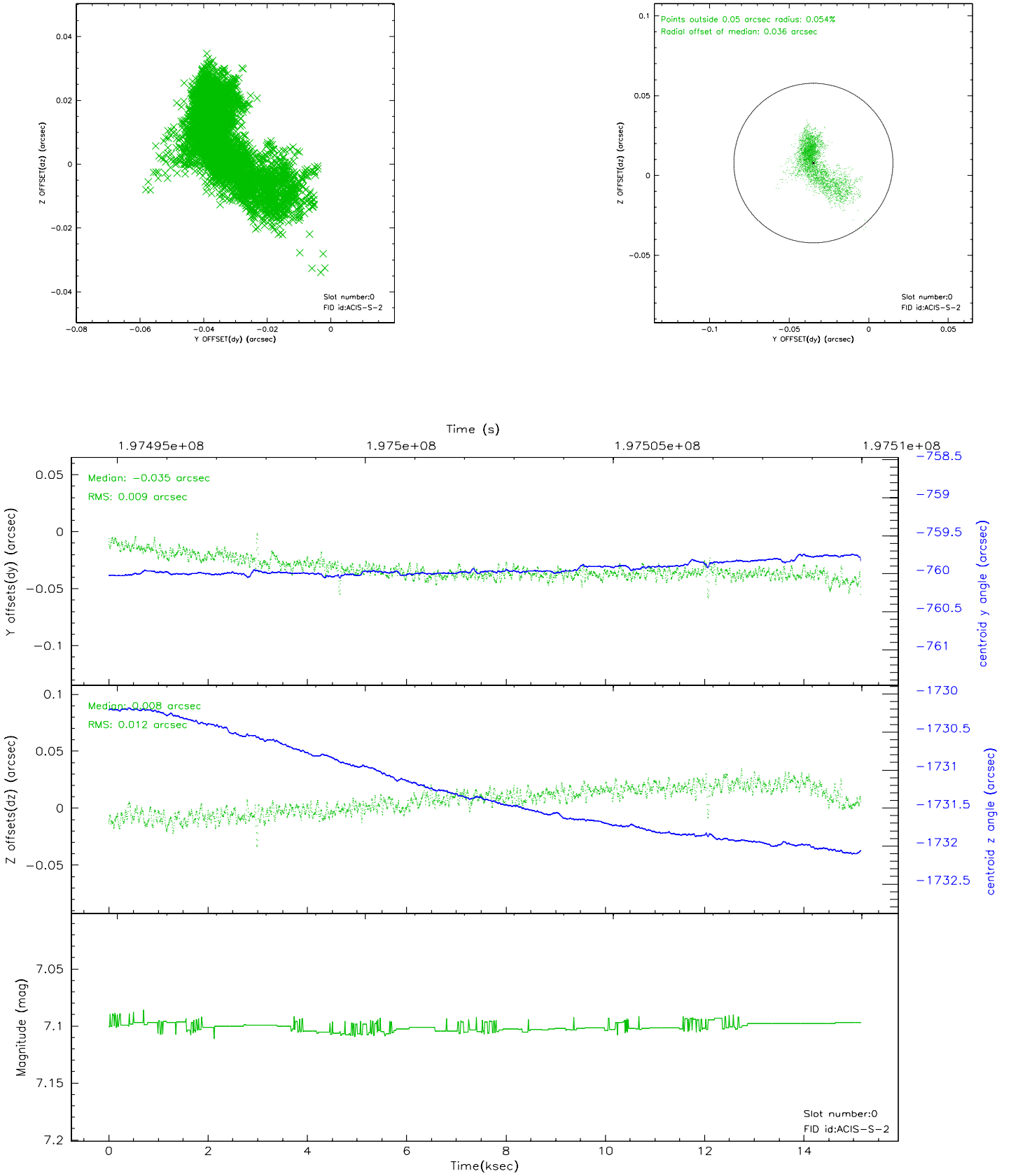


## 2.4.5 Slot 7

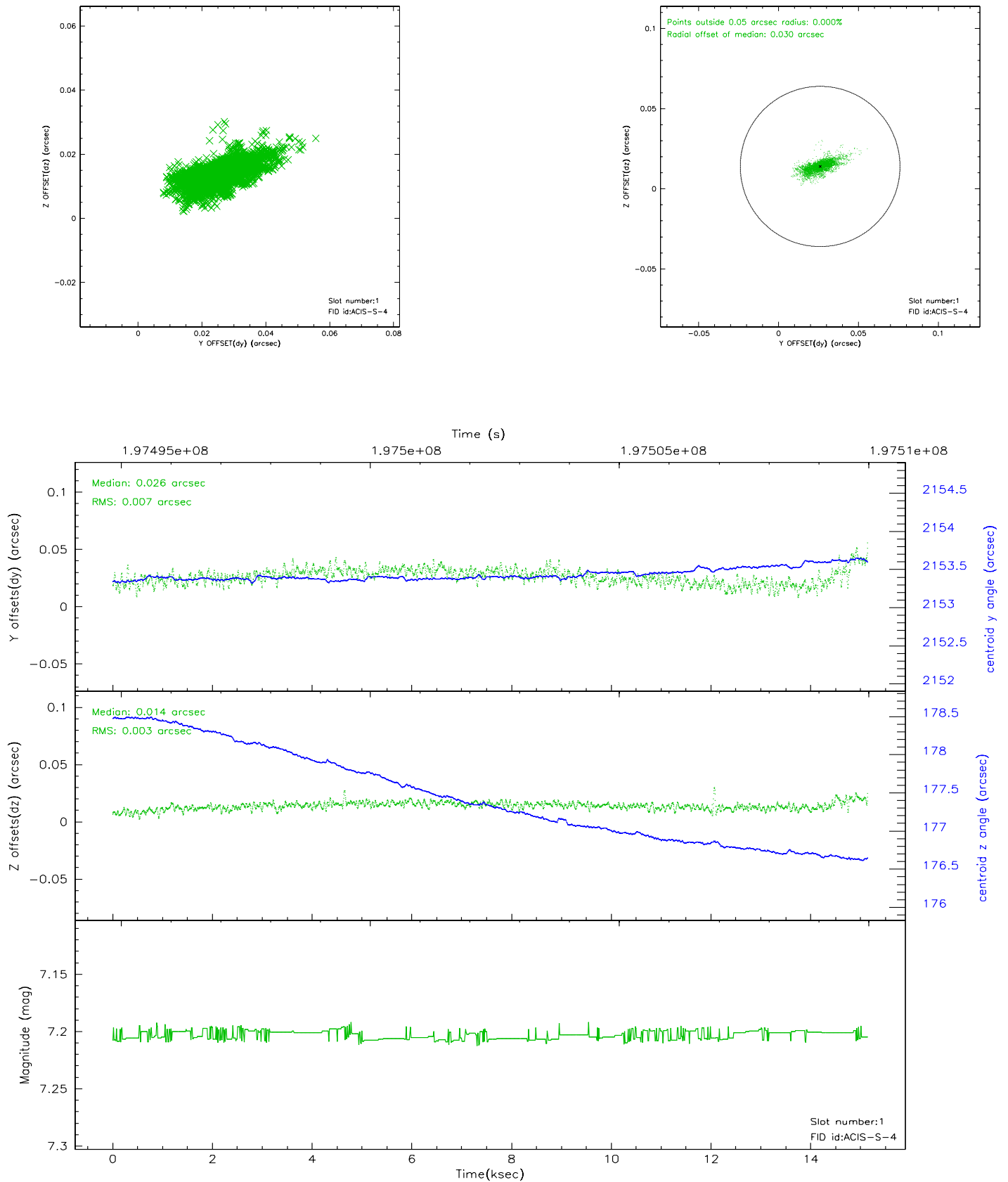


## 2.5 FID Slots

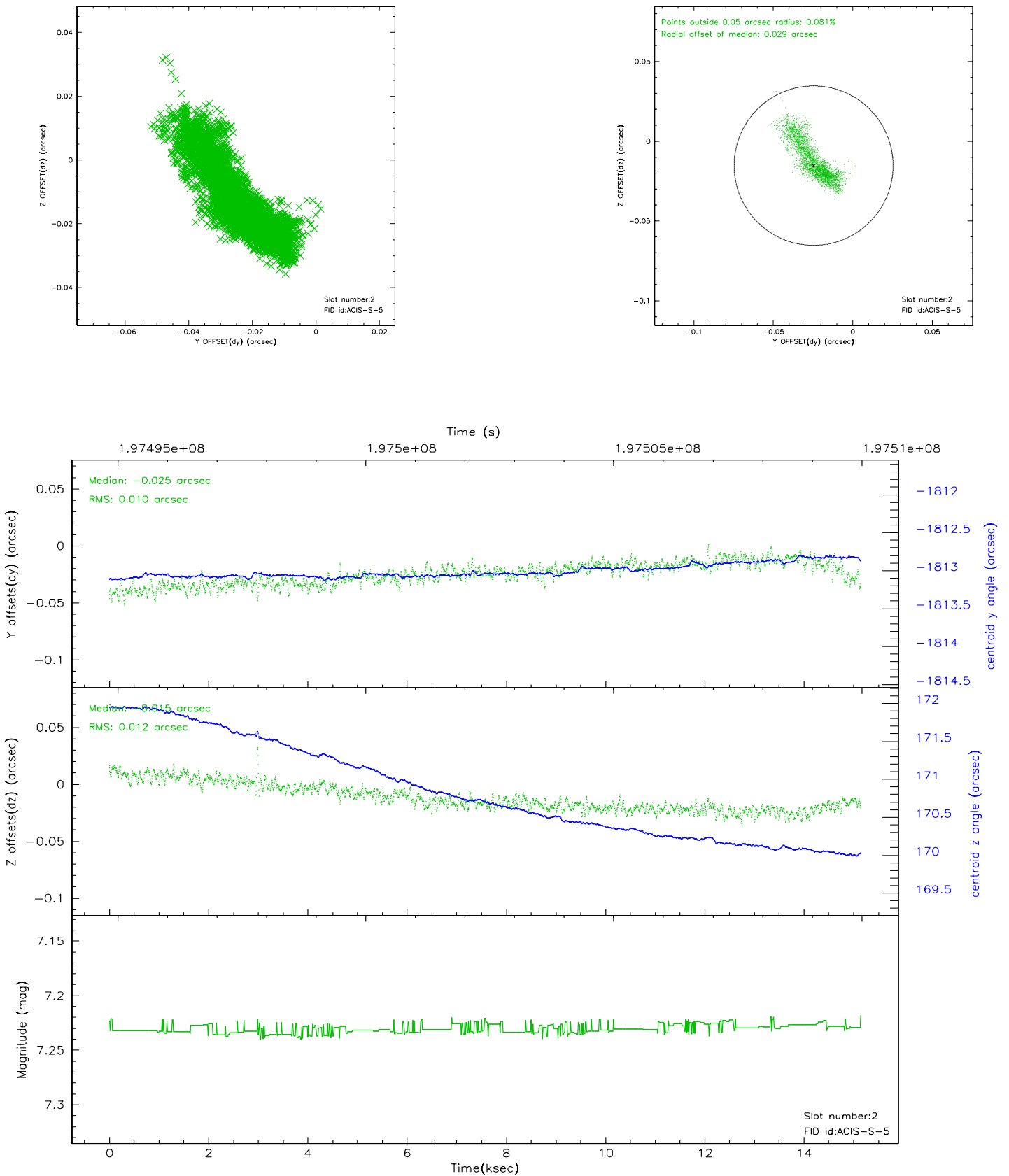
### 2.5.1 Slot 0



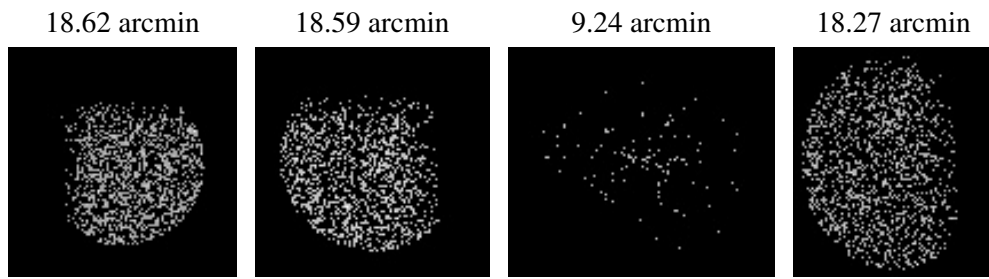
## 2.5.2 Slot 1



## 2.5.3 Slot 2



### 3 Point Sources



## A Summary

### A.1 Status

V&V Scientist	Beth Sundheim
V&V Date (YYYY-MM-DD)	2006.05.30
V&V Edition	1
V&V Disposition and Status	OK
V&V Charge Time	14.758

### A.2 Comments