

V&V Reference Report

L2 ASCDS Version : 7.6.7.2

Observation 5286 - L2 Version 001
Chandra X-Ray Center

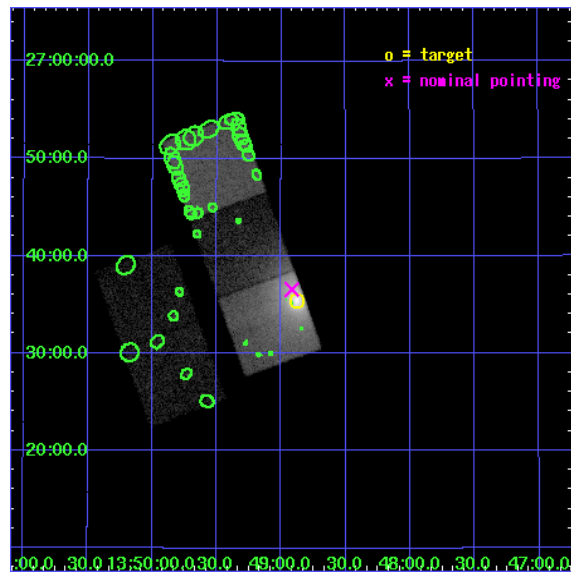
L2 Processing Date : Jun 6 2006

Contents

1	Front	2
2	OBI	3
2.1	OBI	3
2.1.1	Images	3
2.1.2	Bias	3
2.1.3	Parameters	4
2.1.4	Events	4
2.2	Compared Parameters	5
2.3	Aspect	6
2.4	Star Slots	9
2.4.1	Slot 3	9
2.4.2	Slot 4	10
2.4.3	Slot 5	11
2.4.4	Slot 6	12
2.4.5	Slot 7	13
2.5	FID Slots	14
2.5.1	Slot 0	14
2.5.2	Slot 1	15
2.5.3	Slot 2	16
3	Point Sources	17
A	Summary	18
A.1	Status	18
A.2	Comments	18

1 Front

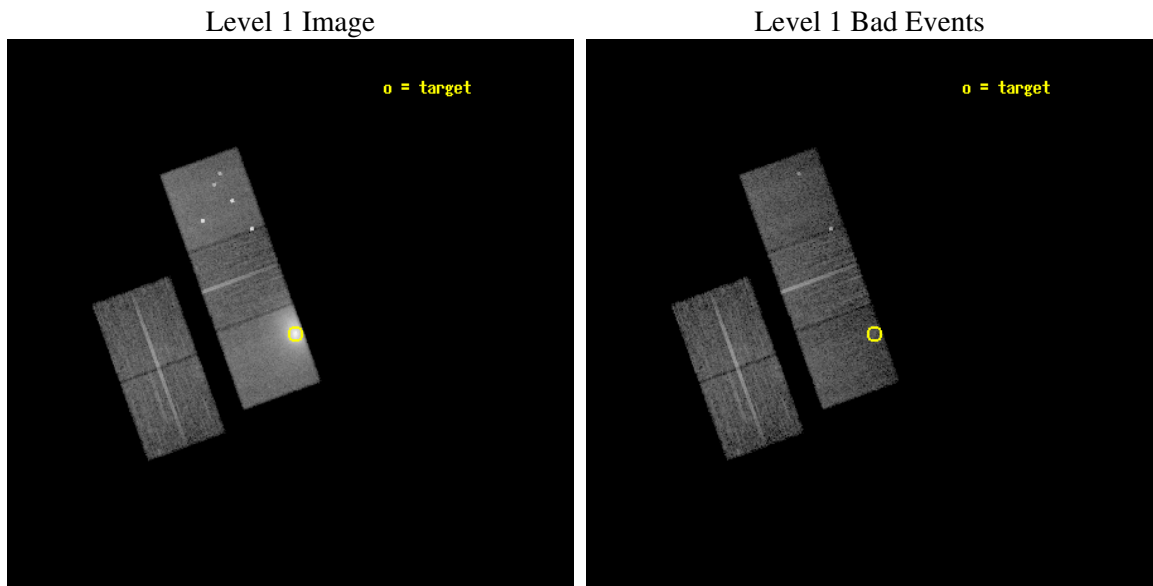
seq_num	890026
obs_id	5286
title	Mapping the Depth of the Contaminant on the ACIS Filters with Abell 11795
observer	Dr. CXC Calibration
object	A1795
dtcycle	0
cycle	P
ra_targ	207.219583
dec_targ	26.590833
ra_nom	207.22925861136
dec_nom	26.609707057922
roll_nom	70.118138215157
revision	2
ontime	14483.159001887
livetime	14293.925867181
ontime2	14486.299972147
ontime3	14483.159011811
ontime5	14483.159021825
ontime6	14480.017981827
ontime7	14483.159001887
l2events	234055



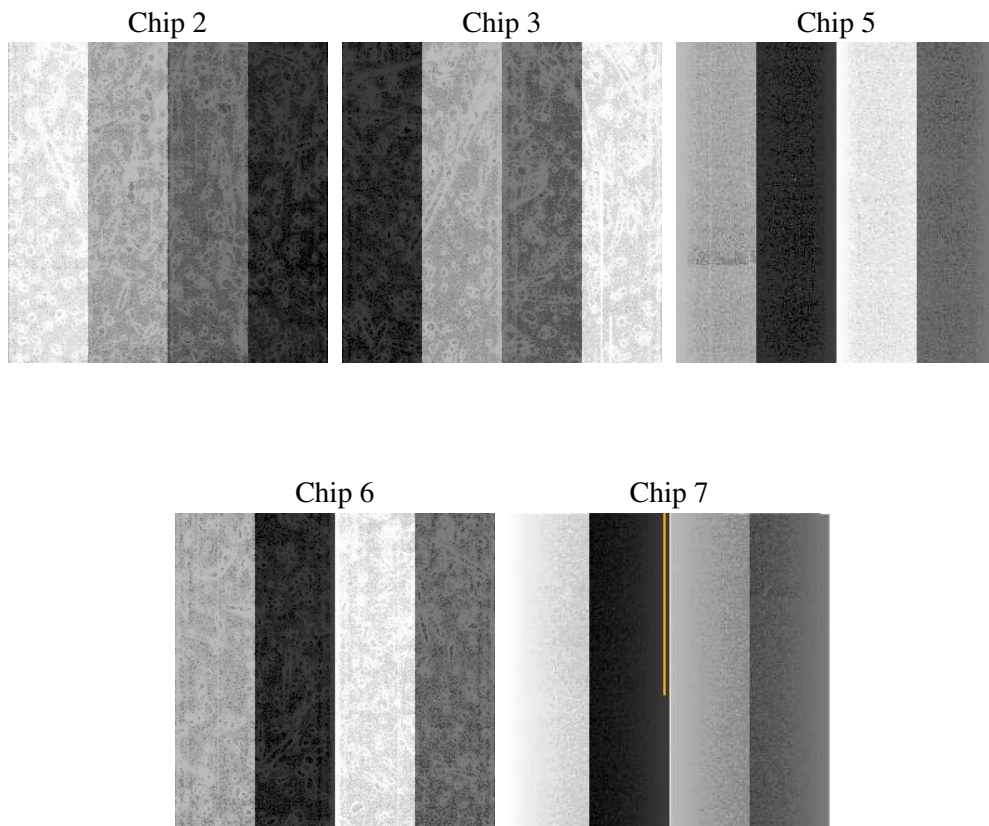
2 OBI

2.1 OBI

2.1.1 Images



2.1.2 Bias



2.1.3 Parameters

obi_num	1
ascdsver	7.6.7.2
caldbver	3.2.2
date	2006-06-06T19:08:50
revision	2

sched_exp_time	14715.000000
ontime	14489.463321209
ontime2	14492.604291469
ontime3	14489.463331133
ontime5	14489.463341147
ontime6	14486.322301149
ontime7	14489.463321209
l1events	541959

2.1.4 Events

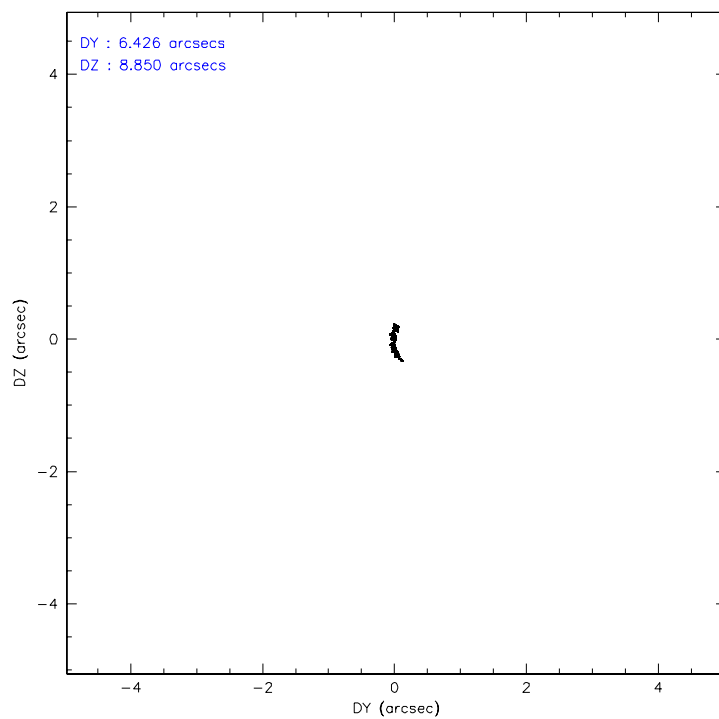
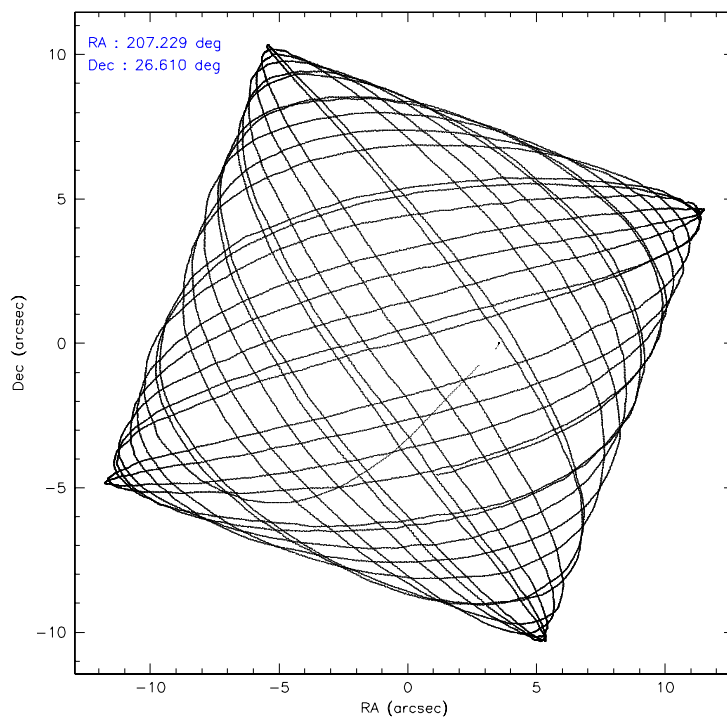
	ccd 2	ccd 3	ccd 5	ccd 6	ccd 7
level 1 events	69853	68669	110545	79638	213254
rejected events	62656	61569	53209	62949	48795
rejected %	89%	89%	48%	79%	22%

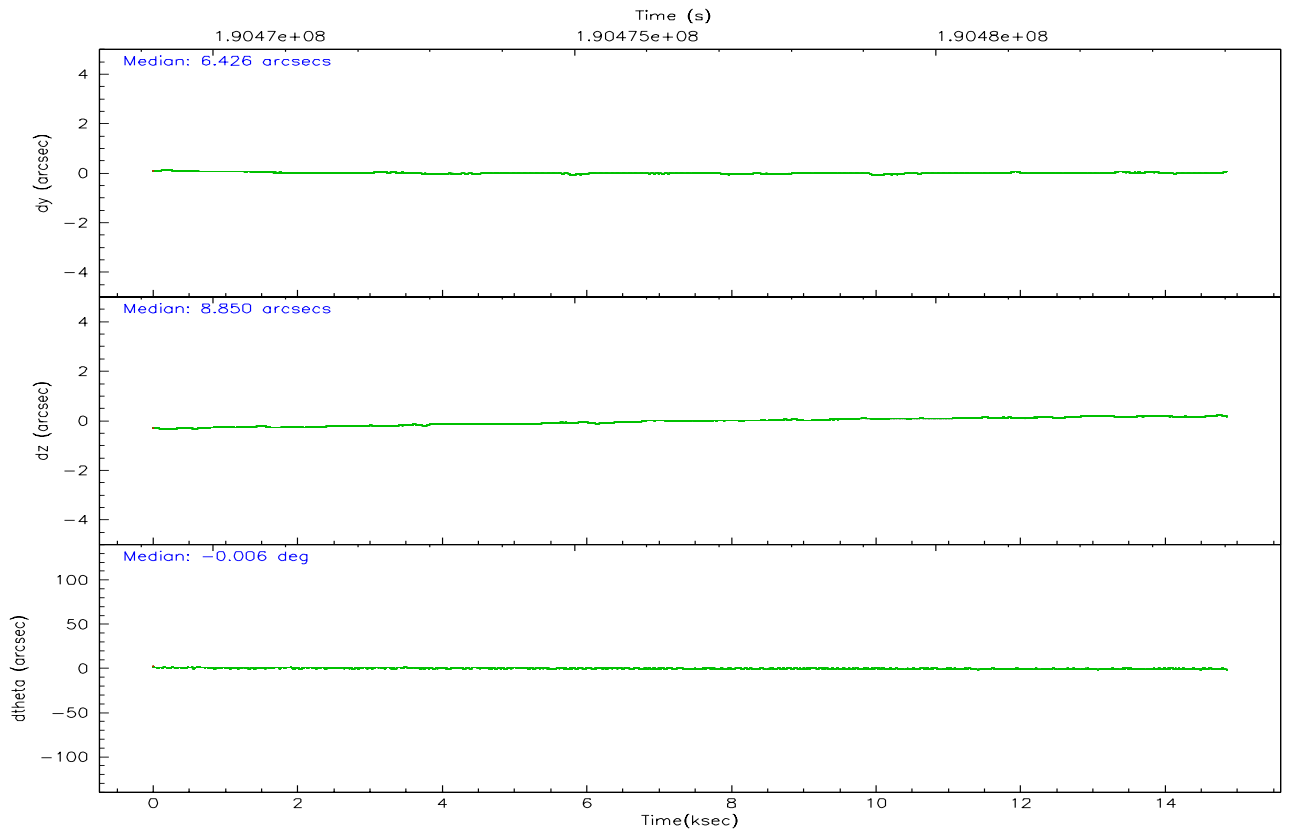
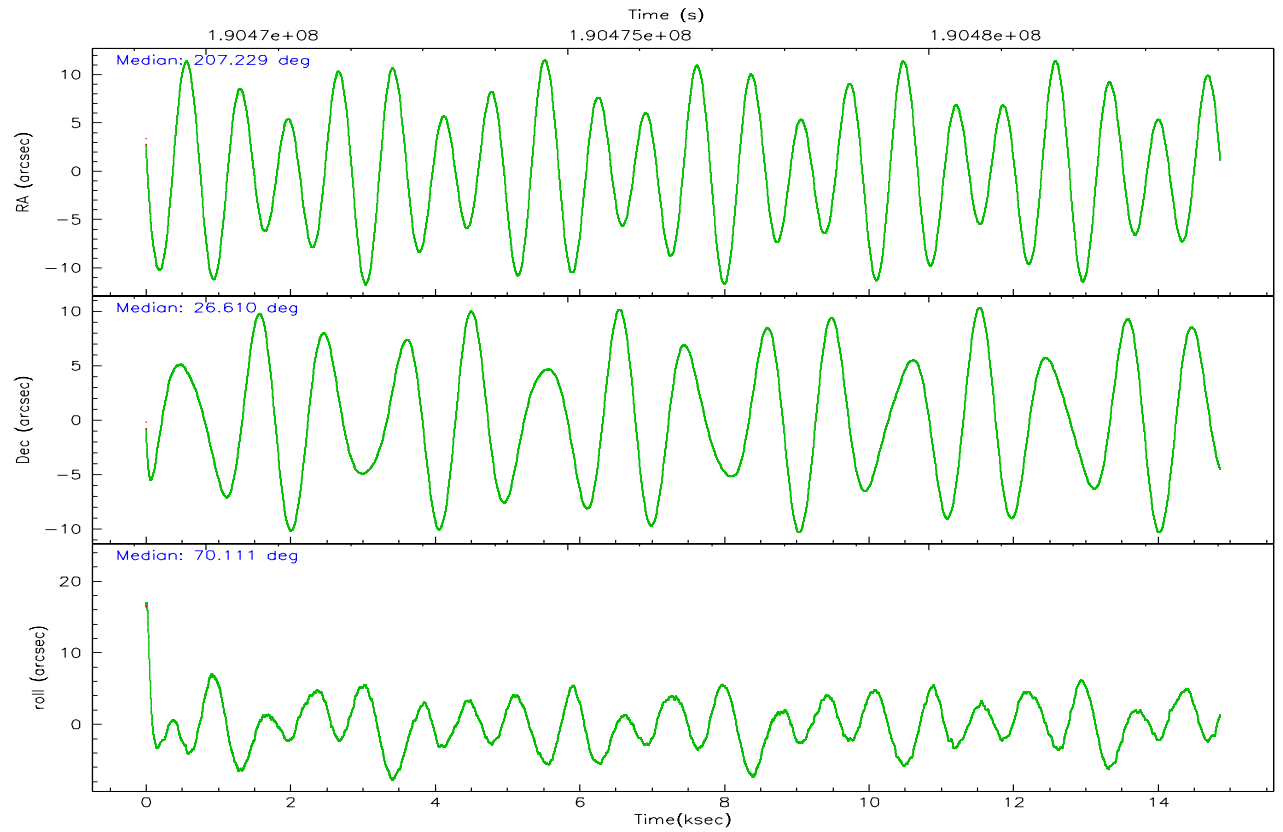
	ccd 2	ccd 3	ccd 5	ccd 6	ccd 7
grade 0 events	2799	2664	11399	10091	38294
	4%	3%	10%	12%	17%
grade 1 events	38	34	189	73	90
	0%	0%	0%	0%	0%
grade 2 events	1554	1427	15052	2477	43279
	2%	2%	13%	3%	20%
grade 3 events	799	840	1749	1131	17094
	1%	1%	1%	1%	8%
grade 4 events	779	825	1449	1141	16760
	1%	1%	1%	1%	7%
grade 5 events	2389	2839	6170	3016	6971
	3%	4%	5%	3%	3%
grade 6 events	1266	1350	27699	1865	49115
	1%	1%	25%	2%	23%
grade 7 events	60229	58690	46838	59844	41651
	86%	85%	42%	75%	19%

2.2 Compared Parameters

Parameter	Planned	Actual	Parameter	Planned	Actual
Instrument	ACIS	ACIS	Obspar format version number	6	6
Detector	ACIS-23567	ACIS-23567	Obspar file type	PREDICTED	ACTUAL
Grating	NONE	NONE	Obspar update status	NONE	UPDATED
Data mode	VFAINT	VFAINT	On-chip summing requested	N	N
Observation mode	POINTING	POINTING	Subarray requested	NONE	NONE
Pointing RA	207.235024	207.2292586113593	Alternating exposures requested	N	N
Pointing Dec	26.582963	26.60970705792211	Primary exposure time	0.000000	3.1
Pointing Roll	69.958907	70.11813821515689			
Window start time	189302464.184000	189302464.184000			
Window stop time	191894464.184000	191894464.184000			
SIM focus pos (mm)	-0.684267	-0.6828225247311905			
SIM defocus (mm)	0	0.001444936568705701			
SIM translation stage pos (mm)	-180.332523	-180.3266934278832			
SIM translation stage offset (mm)	-9.800000000000001	-9.805829155124599			
Observation start time	190469312.184000	190468151.6987			
Observation start date	2004-01-14T12:07:28	2004-01-14T11:49:11			
Observation end time	190484027.184000	190484161.1744			
Observation end date	2004-01-14T16:12:43	2004-01-14T16:16:01			
Read mode	TIMED	TIMED			

2.3 Aspect



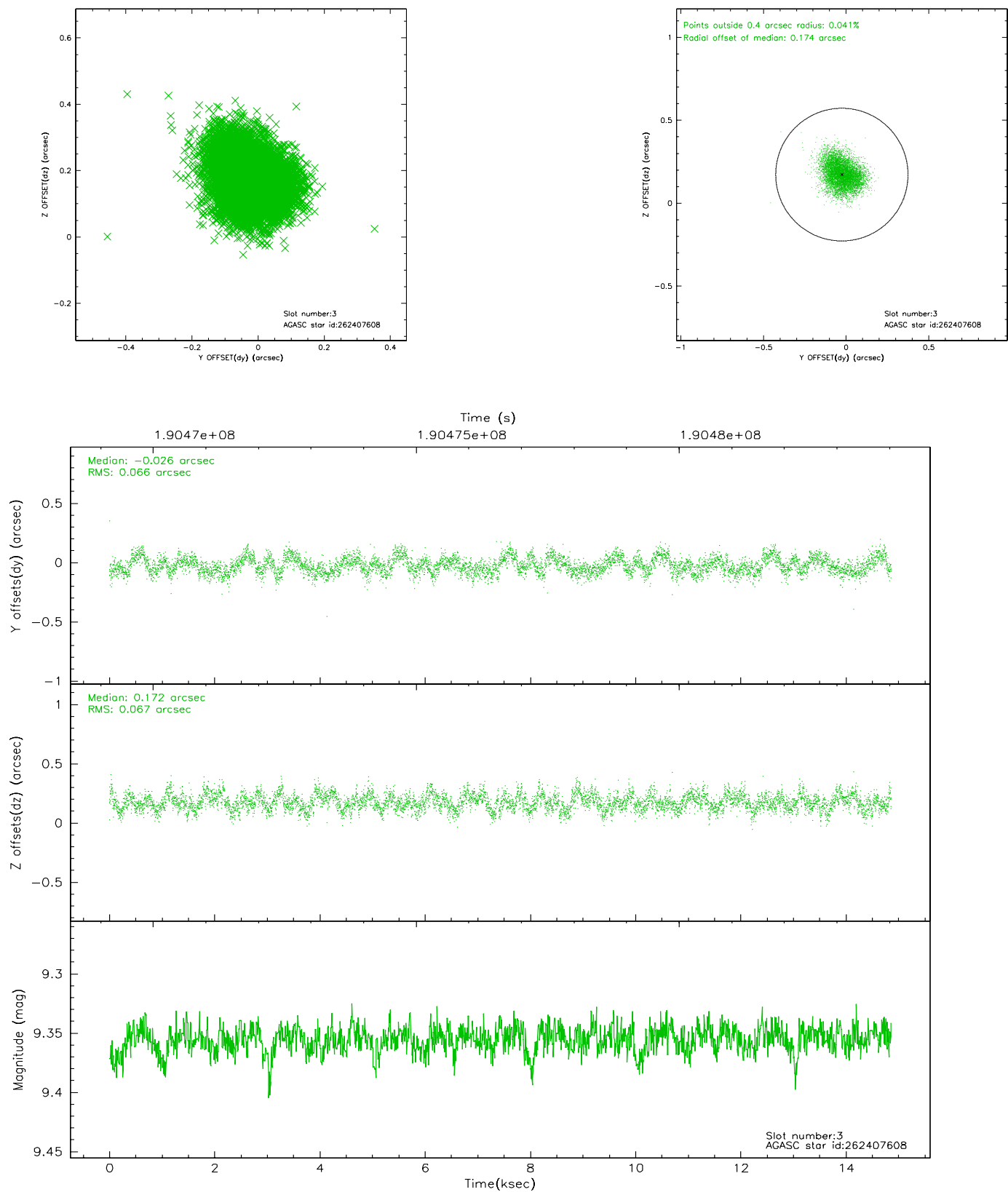


Slot Statistics

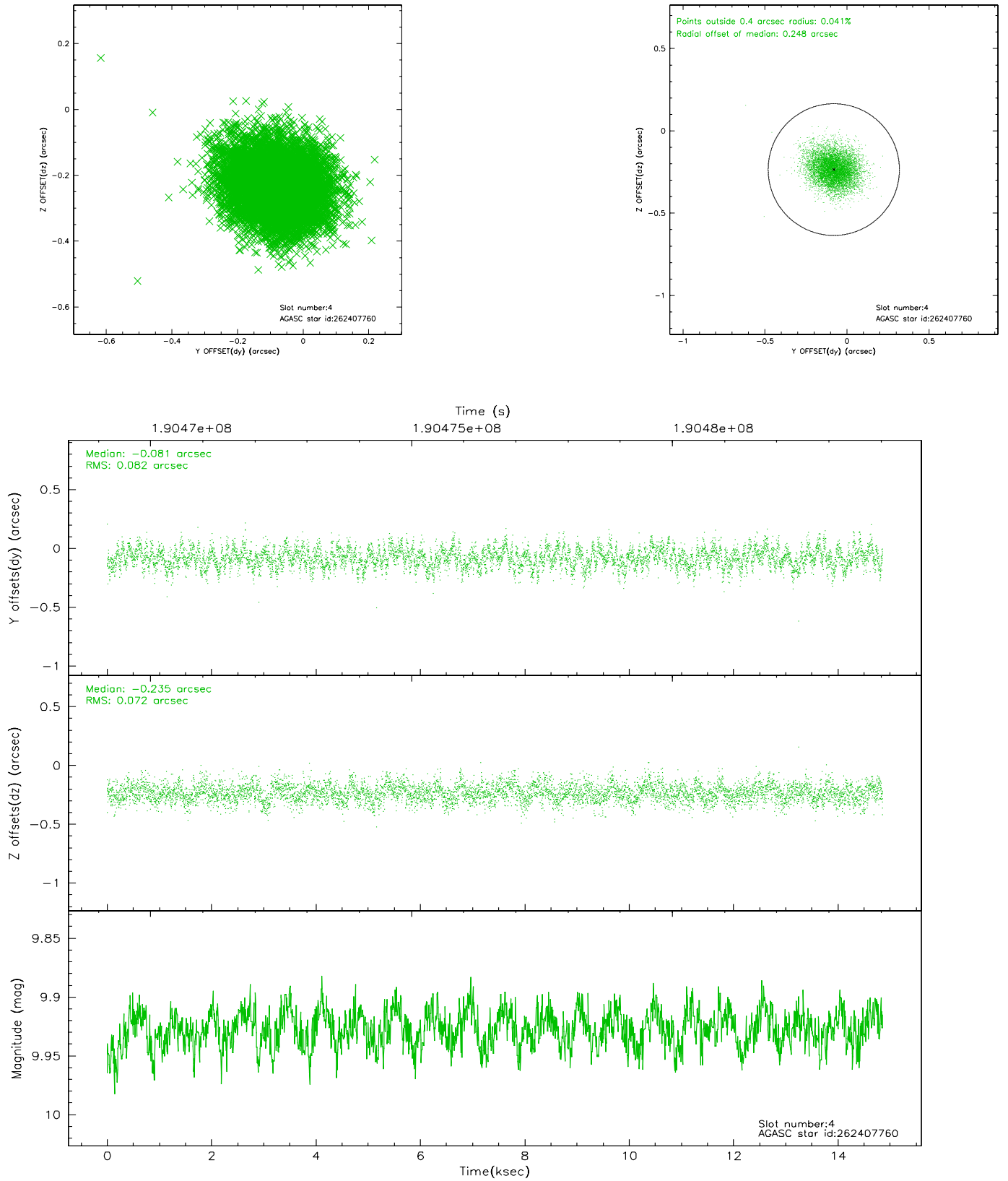
slot	status	id	mag	n_pts	med_dy	med_dz	dr1	dr2	ra	dec	mean_y	mean_z
0	FID	ACIS-S-1	7.19	3622	0.046	0.207	0.010	0.016	0.000000	0.000000	937.67	-1927.37
1	FID	ACIS-S-2	7.08	3623	-0.166	-0.143	0.010	0.017	0.000000	0.000000	-758.27	-1932.67
2	FID	ACIS-S-6	7.43	3623	0.100	-0.062	0.008	0.012	0.000000	0.000000	403.20	613.31
3	GUIDE	262407608	9.36	7242	-0.026	0.172	0.101	0.157	207.378401	26.435507	-339.82	-615.71
4	GUIDE	262407760	9.93	7245	-0.081	-0.235	0.117	0.187	206.566773	26.577263	-751.52	2016.07
5	GUIDE	262408096	9.35	7245	0.025	-0.019	0.088	0.141	207.011678	26.515421	-474.34	593.39
6	GUIDE	262411960	9.69	7243	0.111	0.167	0.139	0.214	207.327895	25.881727	-2268.03	-1147.51
7	GUIDE	262408936	9.69	7235	-0.031	-0.082	0.101	0.162	207.154731	26.726554	397.01	419.67

2.4 Star Slots

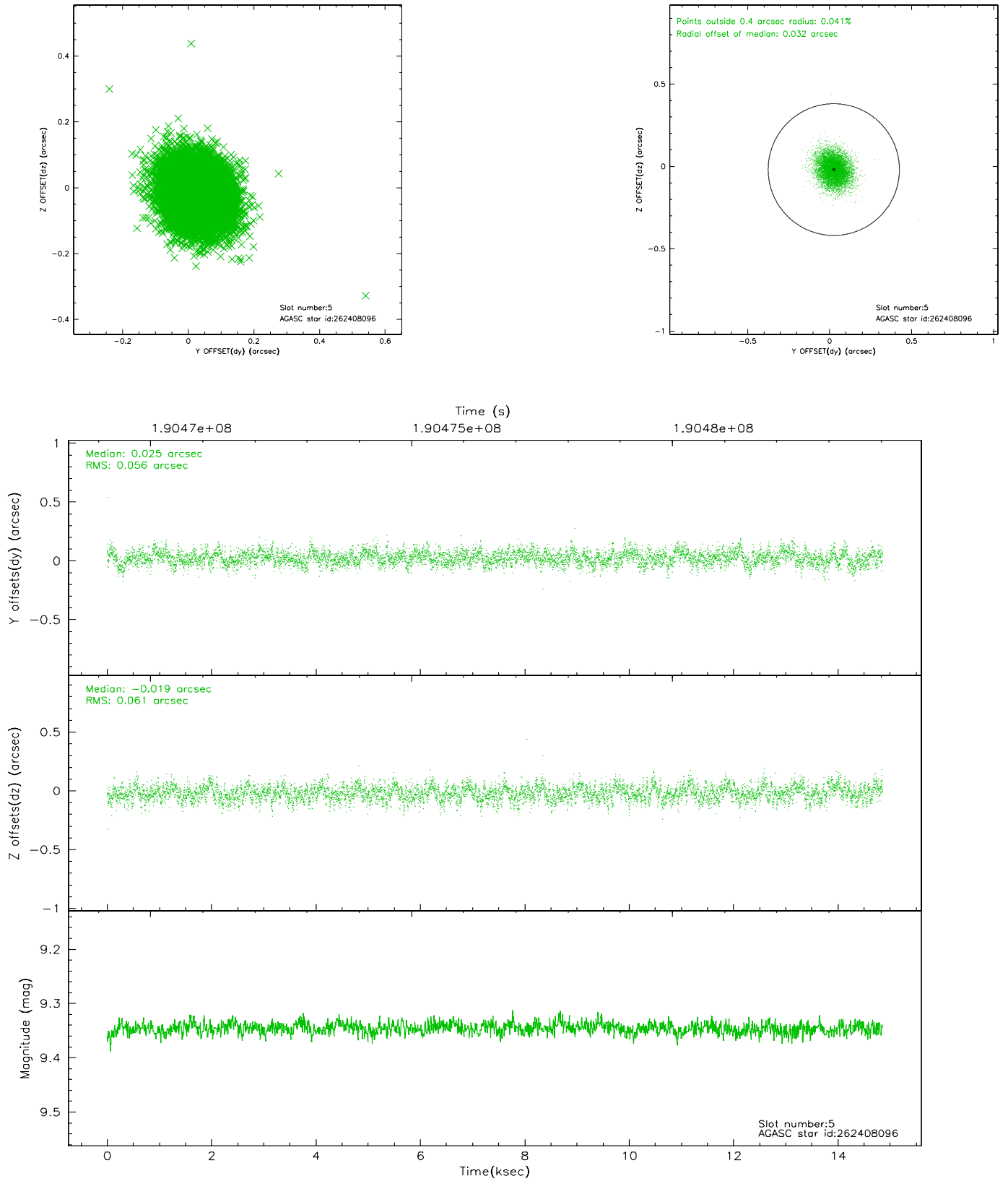
2.4.1 Slot 3



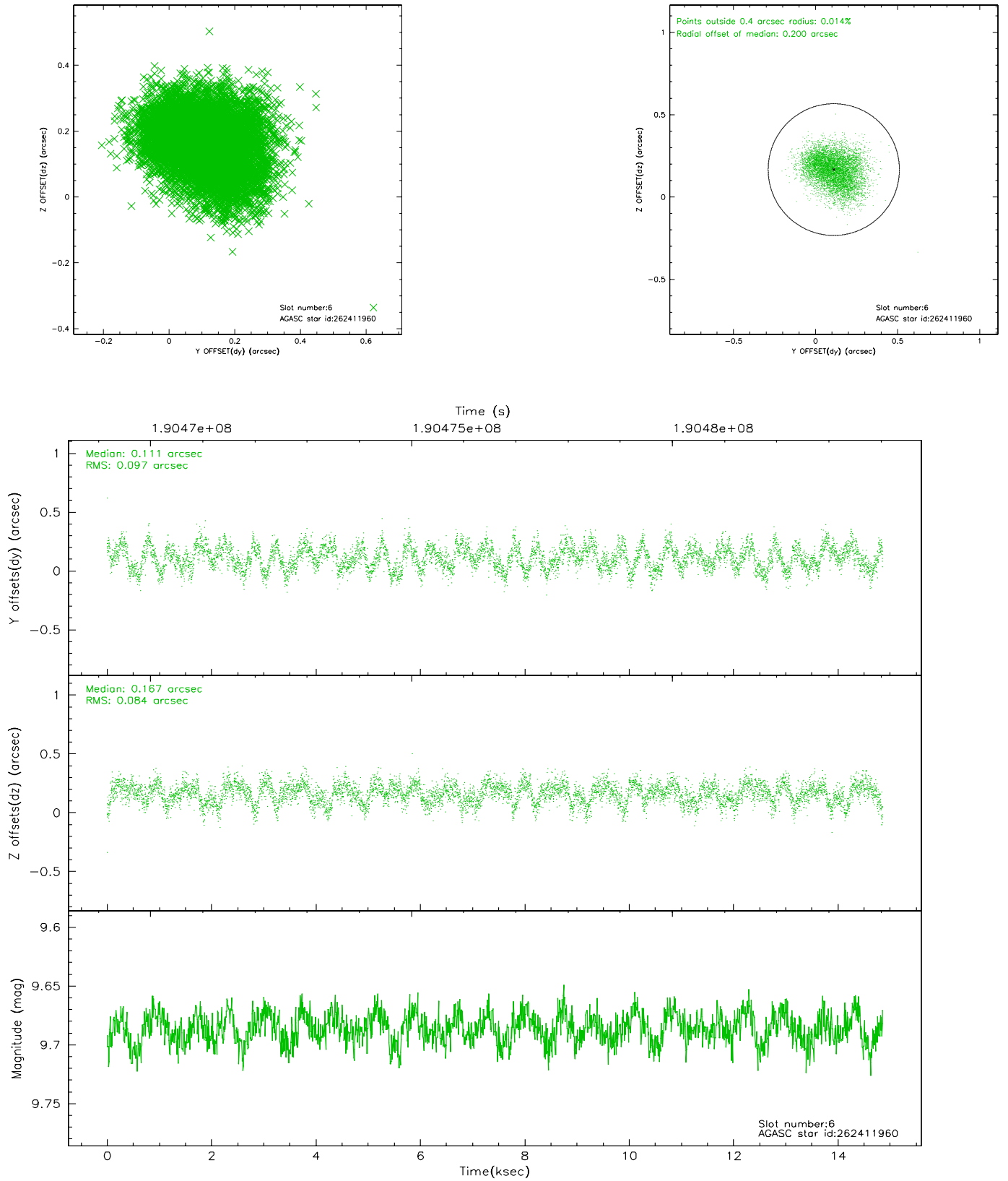
2.4.2 Slot 4



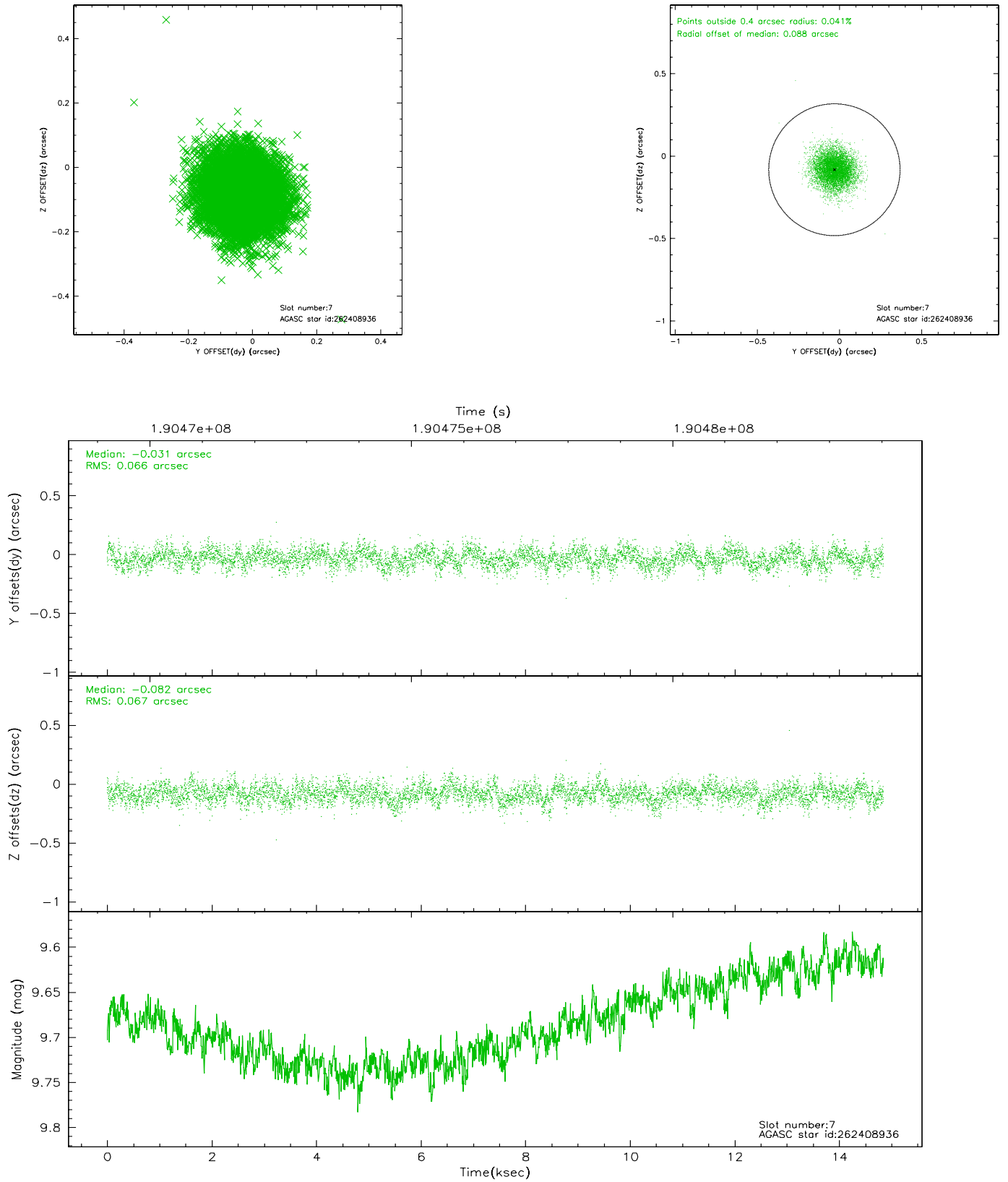
2.4.3 Slot 5



2.4.4 Slot 6

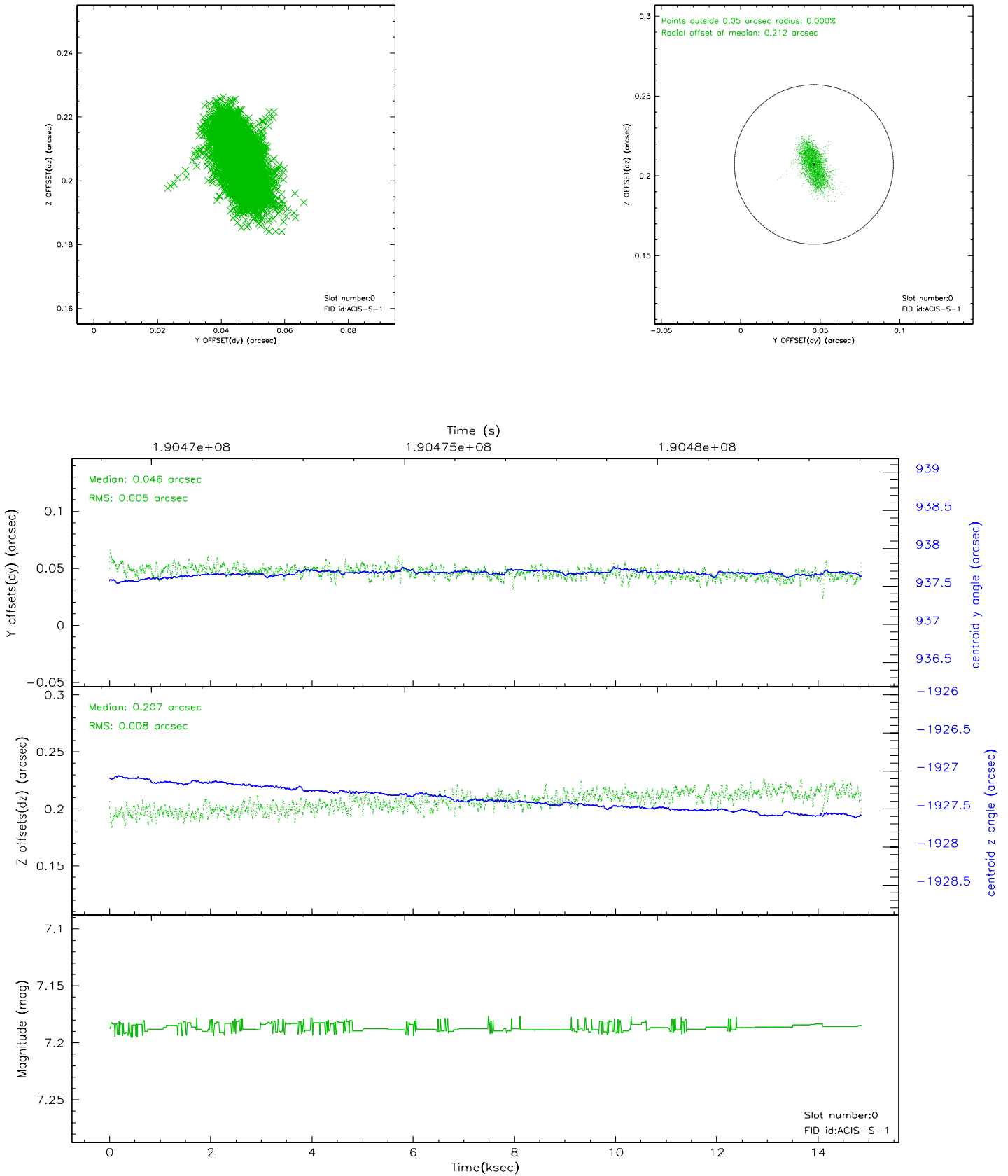


2.4.5 Slot 7

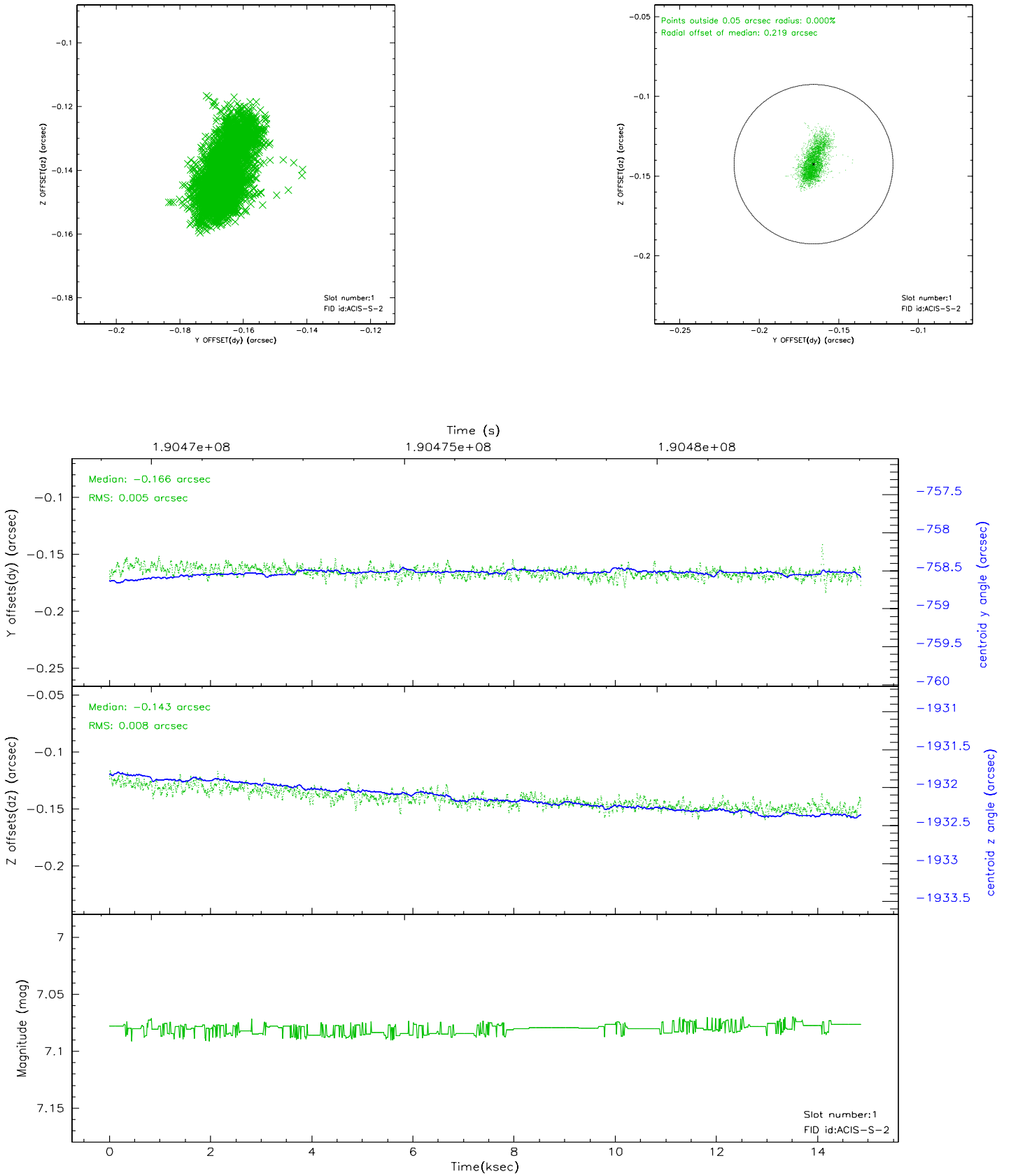


2.5 FID Slots

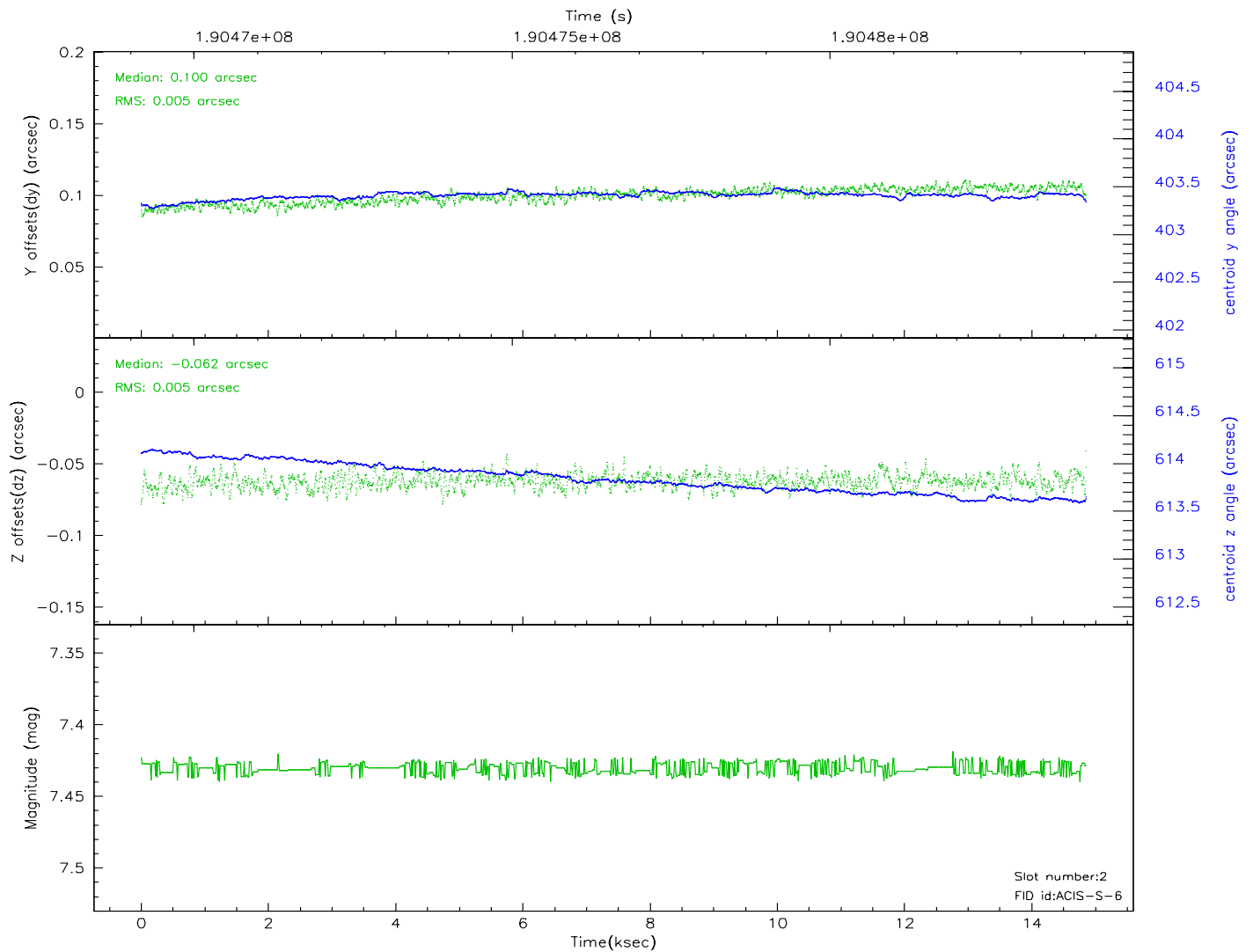
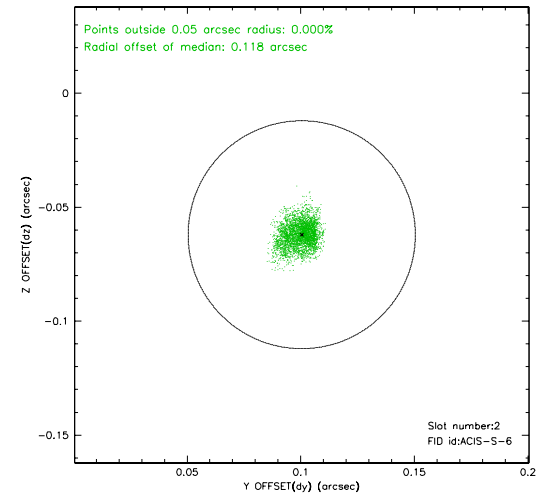
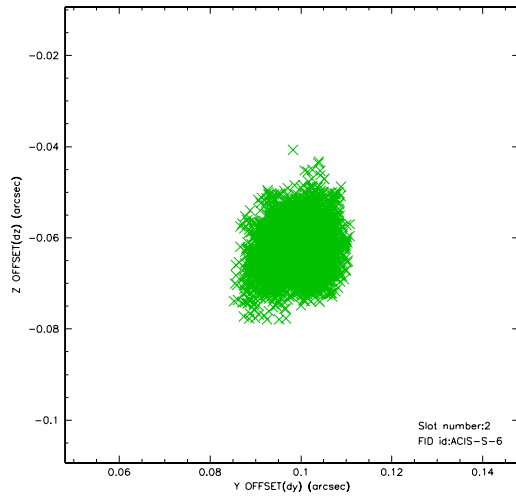
2.5.1 Slot 0



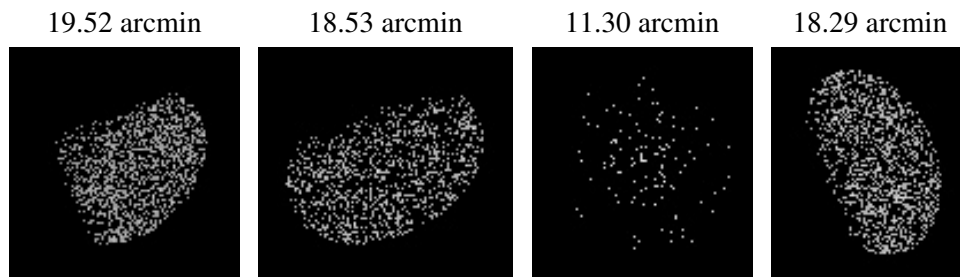
2.5.2 Slot 1



2.5.3 Slot 2



3 Point Sources



A Summary

A.1 Status

V&V Scientist	Jen Lauer
V&V Date (YYYY-MM-DD)	2006.06.07
V&V Edition	1
V&V Disposition and Status	OK
V&V Charge Time	14.486

A.2 Comments

Window constraint met.

Target is near the edge of the chip.