

V&V Reference Report

L2 ASCDS Version : 10.4.1

Observation 51676 - L2 Version 3
Chandra X-Ray Center

L2 Processing Date : Sep 23 2015

Contents

1	Front	2
2	OBI	3
2.1	OBI	3
2.1.1	Images	3
2.1.2	Bias	3
2.1.3	Parameters	4
2.1.4	Events	4
2.2	Compared Parameters	5
2.3	Star Slots	6
2.4	FID Slots	6
A	Summary	7
A.1	Status	7
A.2	Comments	7

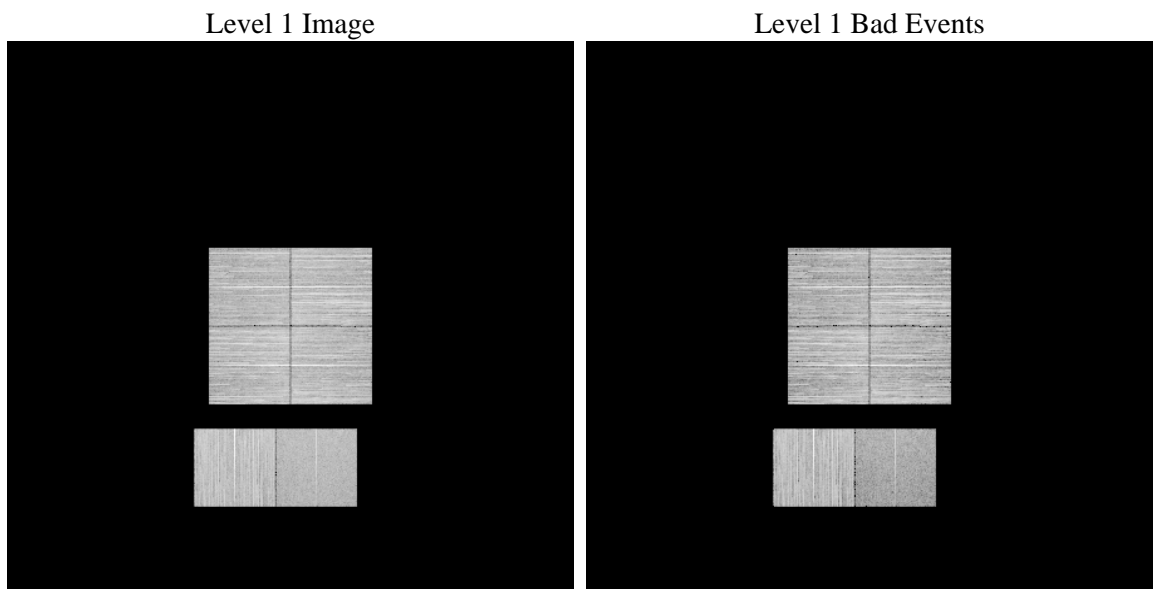
1 Front

seq_num	 	Sequence number
obs_id	51676	Observation id
title	ACIS-012367 diagnostics	Proposal title
observer	CHANDRA engineering request/realtime commanding	Principal investig
object	 	Source name
dtcycle	0	
cycle	P	events from which exps? Prim/Second/Both
ra_targ	0.0	Observer's specified target RA [deg]
dec_targ	0.0	Observer's specified target Dec [deg]
ra_nom	328.02251201195	Nominal RA [deg]
dec_nom	-42.985415907102	Nominal Dec [deg]
roll_nom	351.34343725557	Nominal Roll [deg]
revision	3	Processing version of data
ontime	7726.5764864683	Sum of GTIs [s]
livetime	7628.7379226108	Livetime [s]
ontime0	7726.5764764547	Sum of GTIs [s]
ontime1	7726.5764864683	Sum of GTIs [s]
ontime2	7726.5667284727	Sum of GTIs [s]
ontime3	7726.5764864683	Sum of GTIs [s]
ontime6	7726.525688529	Sum of GTIs [s]
ontime7	7726.5764864683	Sum of GTIs [s]
l2events	187804	Number of level 2 events

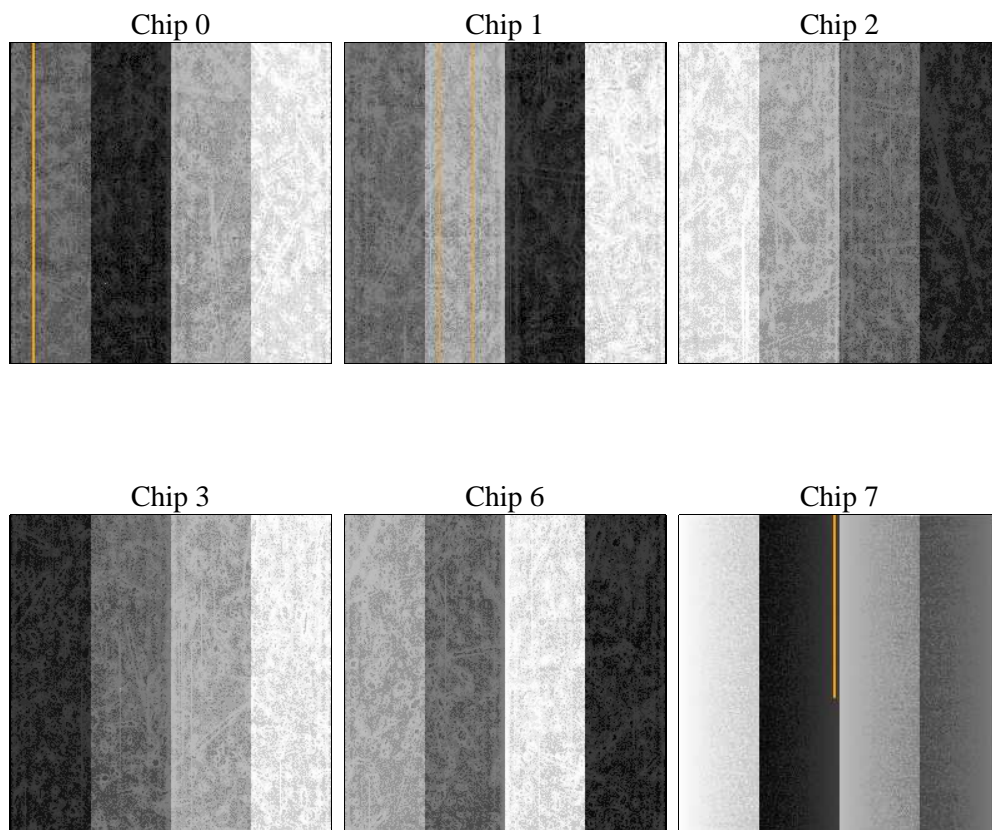
2 OBI

2.1 OBI

2.1.1 Images



2.1.2 Bias



2.1.3 Parameters

obi_num	0	Obi number	sched_exp_time	0.0	[s] Scheduled observation exposure time
ascdsver	10.4.1	Processing system revision	ontime	7726.5764864683	Sum of GTIs [s]
caldbver	4.6.8	 	ontime0	7726.5764764547	Sum of GTIs [s]
date	2015-09-23T19:19:39	Date and time of file creation	ontime1	7726.5764864683	Sum of GTIs [s]
revision	3	Processing version of data	ontime2	7726.5667284727	Sum of GTIs [s]
			ontime3	7726.5764864683	Sum of GTIs [s]
			ontime6	7726.525688529	Sum of GTIs [s]
			ontime7	7726.5764864683	Sum of GTIs [s]
			l1events	897733	Number of level 1 events

2.1.4 Events

	ccd 0	ccd 1	ccd 2	ccd 3	ccd 6	ccd 7		ccd 0	ccd 1	ccd 2	ccd 3	ccd 6	ccd 7
level 1 events	135509	166132	158843	147682	169079	120488	grade 0 events	13630	12911	13865	14182	13887	7525
rejected events	106760	136971	130673	118643	138429	66951		10%	7%	8%	9%	8%	6%
rejected %	78%	82%	82%	80%	81%	55%	grade 1 events	70	75	78	75	91	75
								0%	0%	0%	0%	0%	0%
							grade 2 events	6176	6730	5663	5751	6567	13316
								4%	4%	3%	3%	3%	11%
							grade 3 events	1782	1809	1902	1961	1926	4163
								1%	1%	1%	1%	1%	3%
							grade 4 events	1827	1925	1807	1970	1915	4109
								1%	1%	1%	1%	1%	3%
							grade 5 events	2788	2774	2470	3062	3018	7513
								2%	1%	1%	2%	1%	6%
							grade 6 events	5334	5786	4933	5175	6355	24424
								3%	3%	3%	3%	3%	20%
							grade 7 events	103902	134122	128125	115506	135320	59363
								76%	80%	80%	78%	80%	49%

2.2 Compared Parameters

Parameter	Planned	Actual
Instrument	ACIS	ACIS
Detector	ACIS-012367	ACIS-012367
Grating	NONE	NONE
Data mode	FAINT	FAINT
Observation mode	SECONDARY	SECONDARY
[deg] Pointing RA	0	328.0225120119525
[deg] Pointing Dec	0	-42.98541590710194
[deg] Pointing Roll	0.0	351.3434372555717
[mm] SIM focus pos	-1.429586	-0.6828225247311905
[mm] SIM defocus	0.1037507710433287	0.8505141146731063
[mm] SIM translation stage pos	250.455976	250.466033080201
[mm] SIM translation stage offset	0	-0.01005468664627074
[s] Observation start time (MET)	556789873.029444	556789872.0044399
Observation start date	2015-08-24T07:51:13	2015-08-24T07:51:12
[s] Observation end time (MET)	556801879.8801219	556801878.8551199
Observation end date	2015-08-24T11:11:20	2015-08-24T11:11:18
Read mode	TIMED	TIMED

Parameter	Planned	Actual
Obspar format version number	7	7
Obspar file type	PREDICTED	ACTUAL
Obspar update status	NONE	UPDATED
Number of optional ACIS chips dropped	0	0
On-chip summing requested	N	N
Subarray requested	NONE	NONE
Alternating exposures requested	N	N
[s] Primary exposure time	3.2	3.2

2.3 Star Slots

2.4 FID Slots

A Summary

A.1 Status

V&V Scientist	Beth Sundheim
V&V Date (YYYY-MM-DD)	2015.09.24
V&V Edition	1
V&V Disposition and Status	OK
V&V Charge Time	7.7265764864683

A.2 Comments

Observation was reprocessed with correct version of obspar file.

==

A spatial region of the original bias map for CCD = 0 suffered from anomalously high data values. Pixels in the event data that were bias-corrected by one of the original affected bias pixels may have an apparent energy shift. While the change in energy is expected to be small (~ 20 eV), it depends on many parameters that have not yet been fully explored for this bias anomaly. The bias map for CCD = 0 has been reconstructed for this processing to remove this anomaly using scaled data from a comparable bias map from another observation.