

V&V Reference Report

L2 ASCDS Version : 8.4.5

Observation 4956 - L2 Version 3
Chandra X-Ray Center

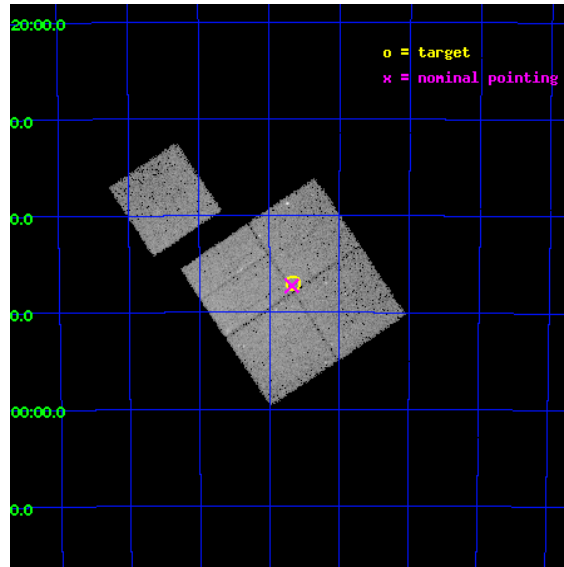
L2 Processing Date : Dec 2 2012

Contents

1	Front	2
2	OBI	3
2.1	OBI	3
2.1.1	Images	3
2.1.2	Bias	3
2.1.3	Parameters	4
2.1.4	Events	4
2.2	Compared Parameters	5
2.3	Aspect	6
2.4	Star Slots	9
2.4.1	Slot 3	9
2.4.2	Slot 4	10
2.4.3	Slot 5	11
2.4.4	Slot 6	12
2.4.5	Slot 7	13
2.5	FID Slots	14
2.5.1	Slot 0	14
2.5.2	Slot 1	15
2.5.3	Slot 2	16
A	Summary	17
A.1	Status	17
A.2	Comments	17

1 Front

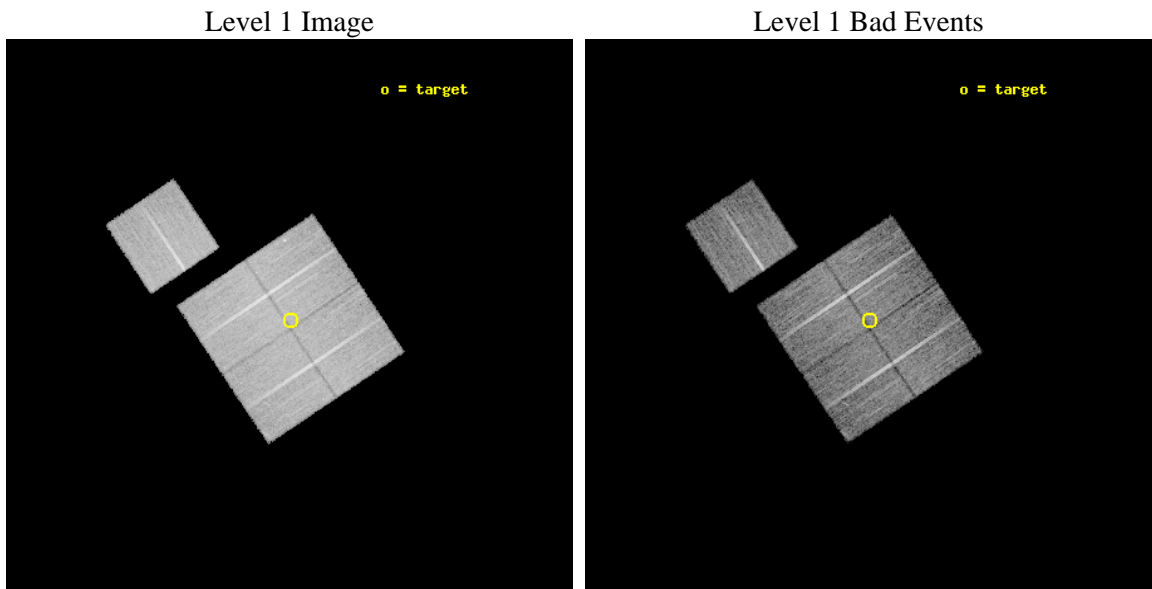
seq_num	800402	Sequence number
obs_id	4956	Observation id
title	The Cluster A3627 -- The Nearest Major Merger	Proposal title
observer	Dr. Christine Jones	Principal investigator
object	Abell 3627	Source name
dtcycle	0	
cycle	P	events from which exps? Prim/Second/Both
ra_targ	243.16429	Observer's specified target RA [deg]
dec_targ	-60.784085	Observer's specified target Dec [deg]
ra_nom	243.16951123895	Nominal RA [deg]
dec_nom	-60.78797056487	Nominal Dec [deg]
roll_nom	326.21323009474	Nominal Roll [deg]
revision	3	Processing version of data
ontime	14703.2999717	Sum of GTIs [s]
livetime	14511.190533157	Livetime [s]
ontime0	14693.877040923	Sum of GTIs [s]
ontime1	14703.2999717	Sum of GTIs [s]
ontime2	14703.2999717	Sum of GTIs [s]
ontime3	14703.2999717	Sum of GTIs [s]
ontime6	14703.2999717	Sum of GTIs [s]
l2events	102321	Number of level 2 events



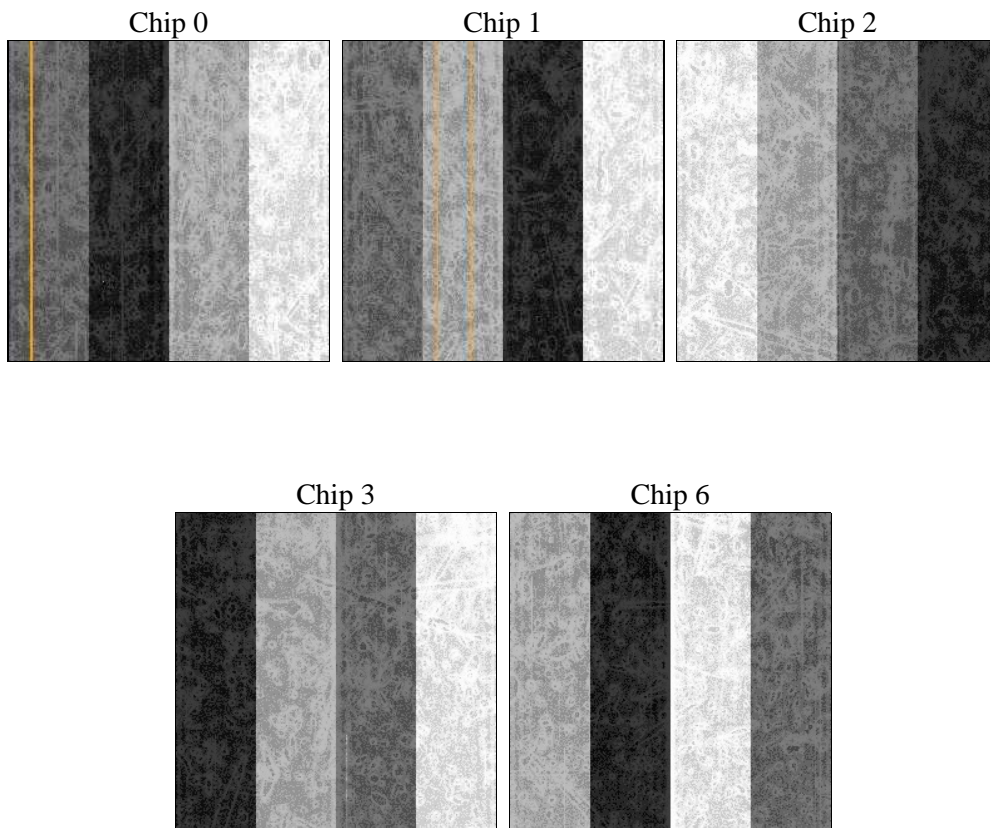
2 OBI

2.1 OBI

2.1.1 Images



2.1.2 Bias



2.1.3 Parameters

obi_num	0	Obi number	sched_exp_time	14526.000000	[s] Scheduled observation exposure time
ascdsver	8.4.5	Processing system revision	ontime	14703.2999717	Sum of GTIs [s]
caldsver	4.5.2	 	ontime0	14693.877040923	Sum of GTIs [s]
date	2012-12-03T01:20:07	Date and time of file creation	ontime1	14703.2999717	Sum of GTIs [s]
revision	3	Processing version of data	ontime2	14703.2999717	Sum of GTIs [s]
			ontime3	14703.2999717	Sum of GTIs [s]
			ontime6	14703.2999717	Sum of GTIs [s]
			l1events	535444	Number of level 1 events

2.1.4 Events

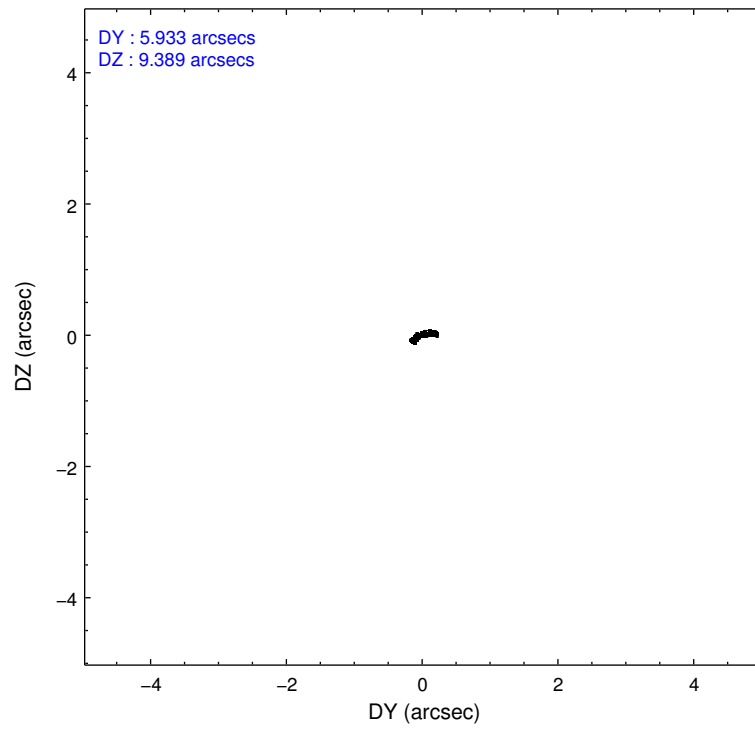
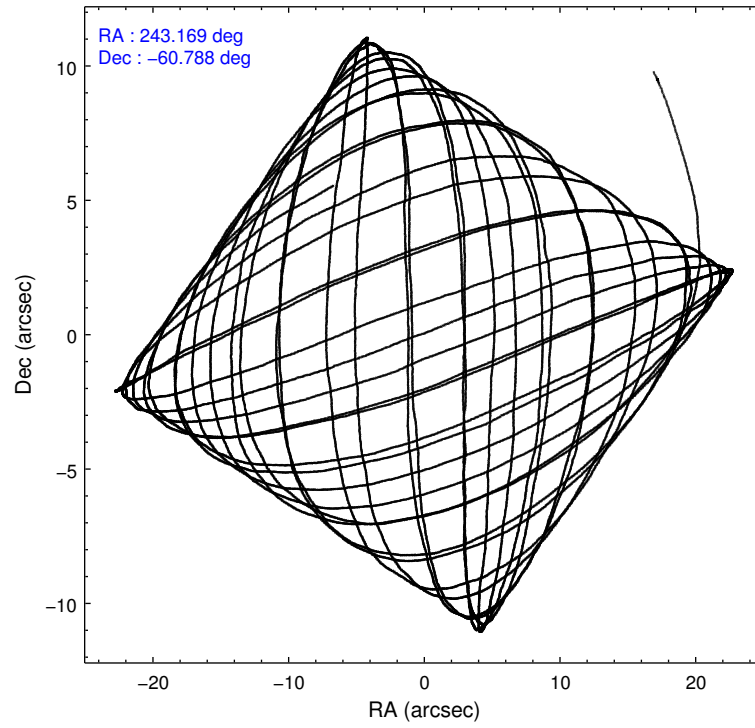
	ccd 0	ccd 1	ccd 2	ccd 3	ccd 6
level 1 events	104470	101462	119018	107428	103066
rejected events	78833	81912	89129	86910	84314
rejected %	75%	80%	74%	80%	81%

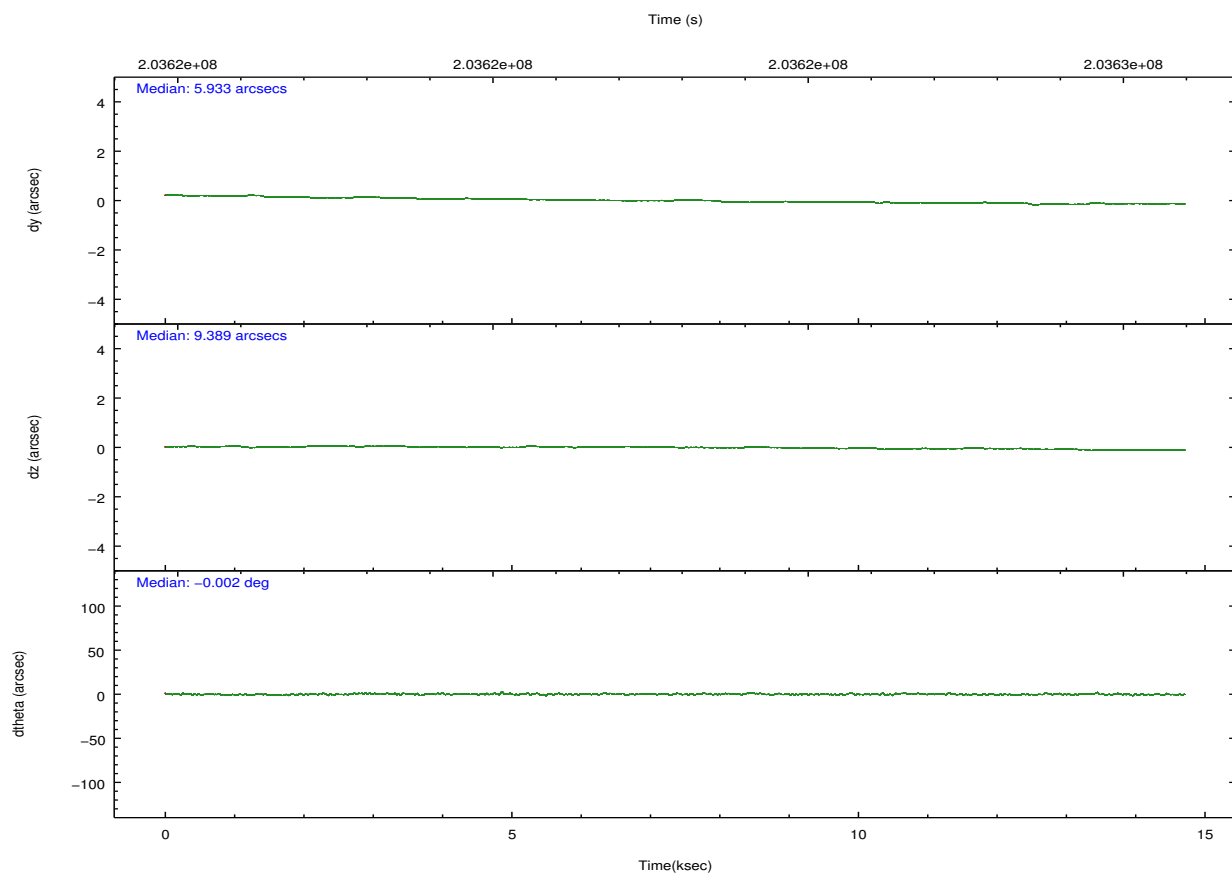
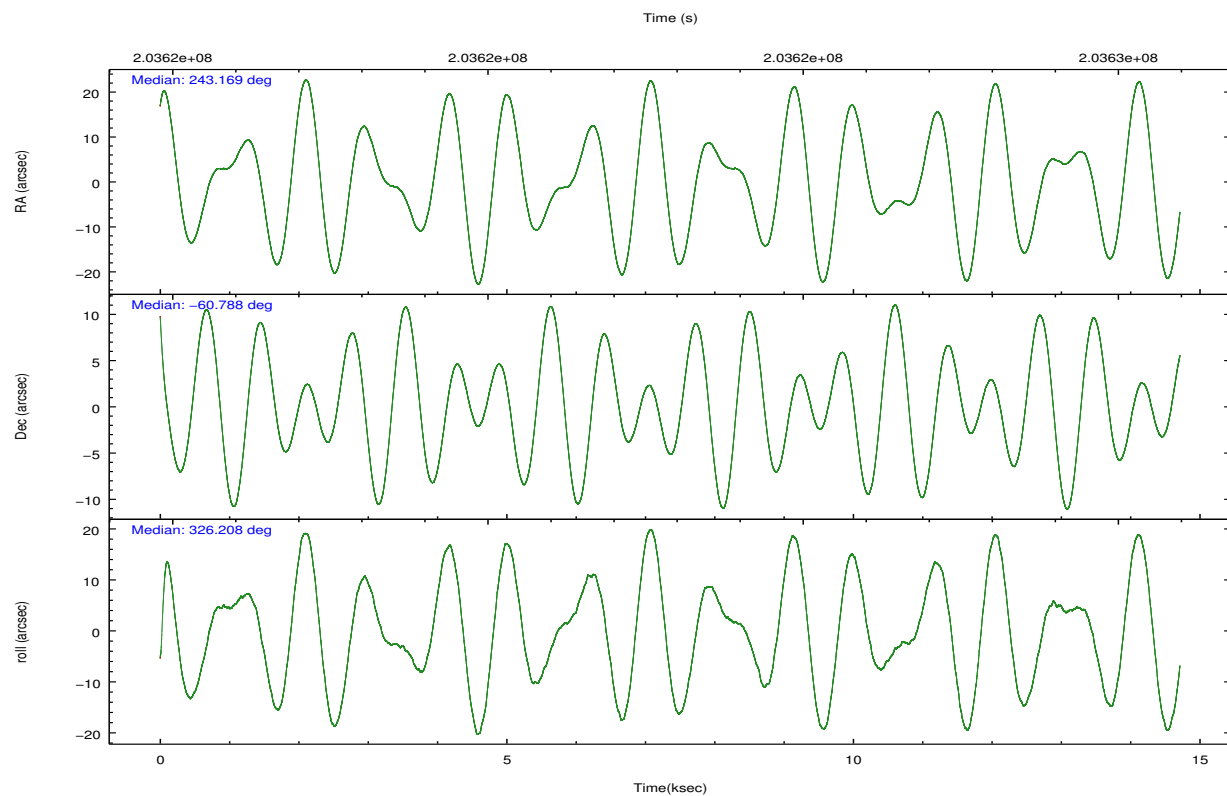
	ccd 0	ccd 1	ccd 2	ccd 3	ccd 6
grade 0 events	16425	11217	19924	12661	11097
	15%	11%	16%	11%	10%
grade 1 events	91	83	132	91	59
	0%	0%	0%	0%	0%
grade 2 events	3932	3176	4380	3188	2879
	3%	3%	3%	2%	2%
grade 3 events	1613	1418	1757	1402	1322
	1%	1%	1%	1%	1%
grade 4 events	1548	1423	1727	1351	1304
	1%	1%	1%	1%	1%
grade 5 events	3339	3516	3121	3555	3735
	3%	3%	2%	3%	3%
grade 6 events	2253	2404	2246	2023	2245
	2%	2%	1%	1%	2%
grade 7 events	75269	78225	85731	83157	80425
	72%	77%	72%	77%	78%

2.2 Compared Parameters

Parameter	Planned	Actual	Parameter	Planned	Actual
Instrument	ACIS	ACIS	Obspar format version number	7	7
Detector	ACIS-01236	ACIS-01236	Obspar file type	PREDICTED	ACTUAL
Grating	NONE	NONE	Obspar update status	NONE	UPDATED
Data mode	VFAINT	VFAINT	Number of optional ACIS chips dropped	0	0
Observation mode	POINTING	POINTING	On-chip summing requested	N	N
[deg] Pointing RA	243.113510	243.1695112389505	Subarray requested	NONE	NONE
[deg] Pointing Dec	-60.786260	-60.78797056486955	Alternating exposures requested	N	N
[deg] Pointing Roll	325.955680	326.2132300947447	[s] Primary exposure time	0.000000	3.1
[mm] SIM focus pos	-0.782348	-0.7809083437167272			
[mm] SIM defocus	0	0.001439871863259334			
[mm] SIM translation stage pos	-233.592463	-233.5874344608287			
[mm] SIM translation stage offset	0	-0.005018542100998502			
[s] Observation start time (MET)	203615721.184000	203614694.13889			
Observation start date	2004-06-14T15:54:17	2004-06-14T15:38:14			
[s] Observation end time (MET)	203630247.184000	203630381.25208			
Observation end date	2004-06-14T19:56:23	2004-06-14T19:59:41			
Read mode	TIMED	TIMED			

2.3 Aspect



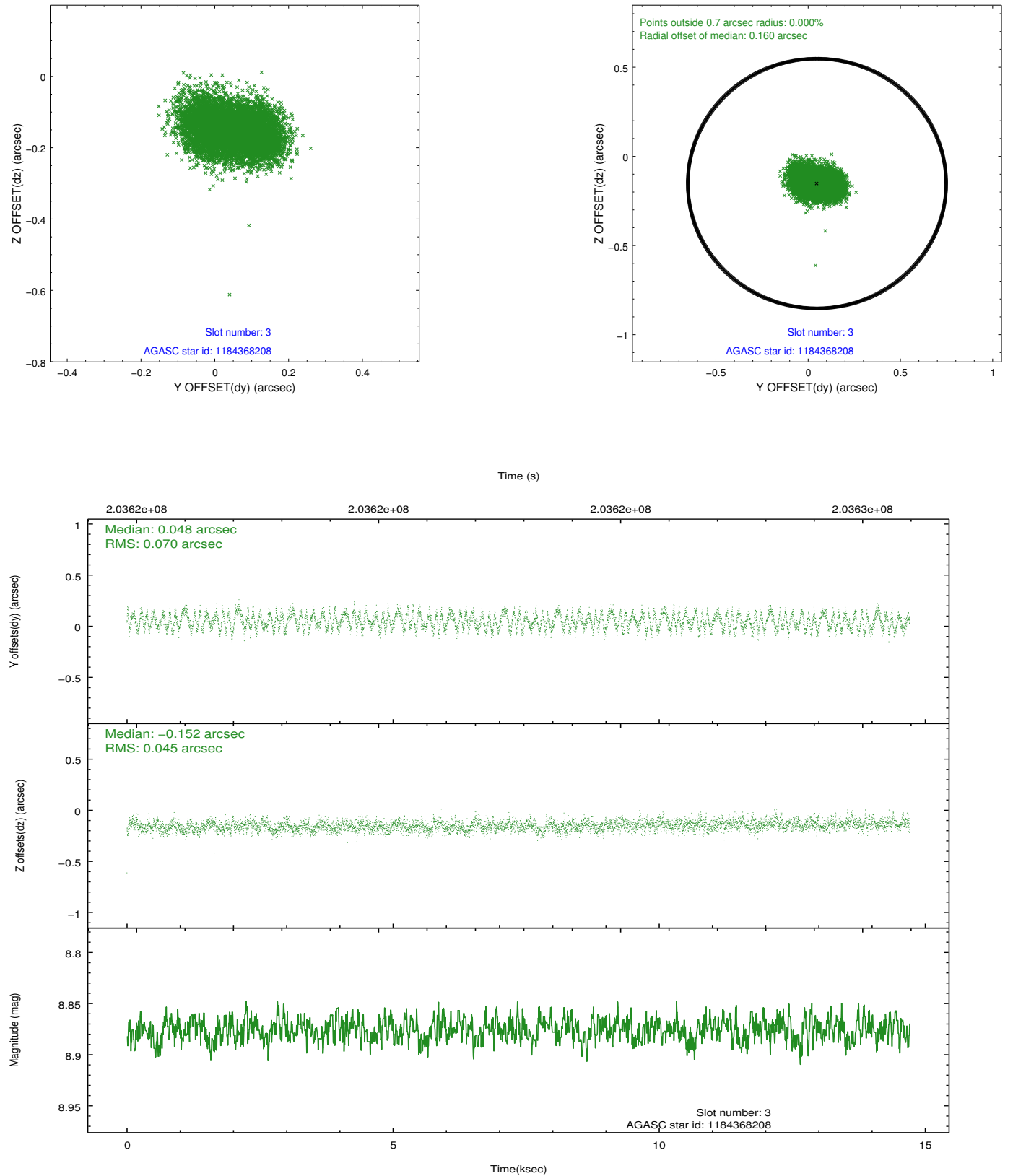


Slot Statistics

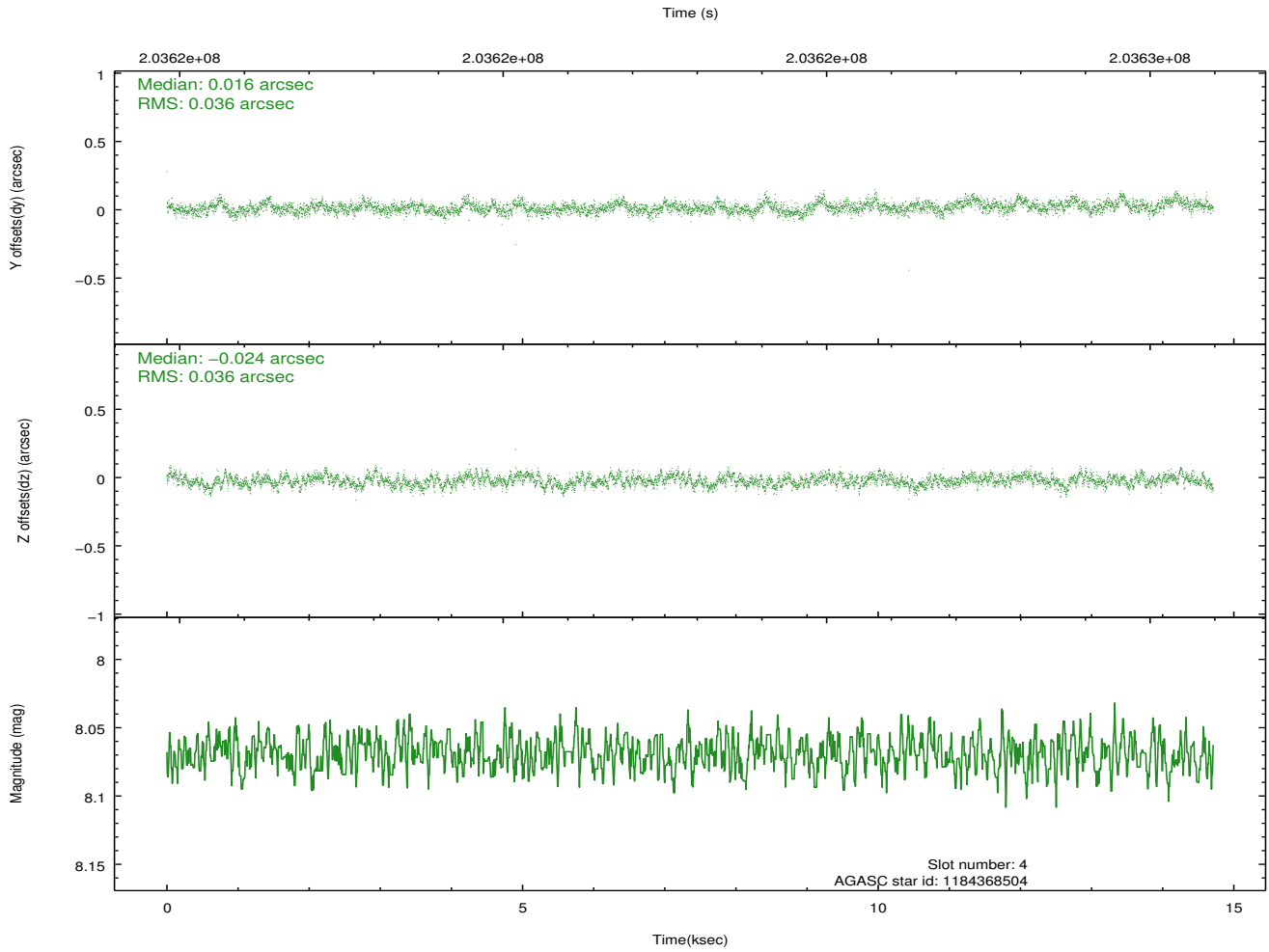
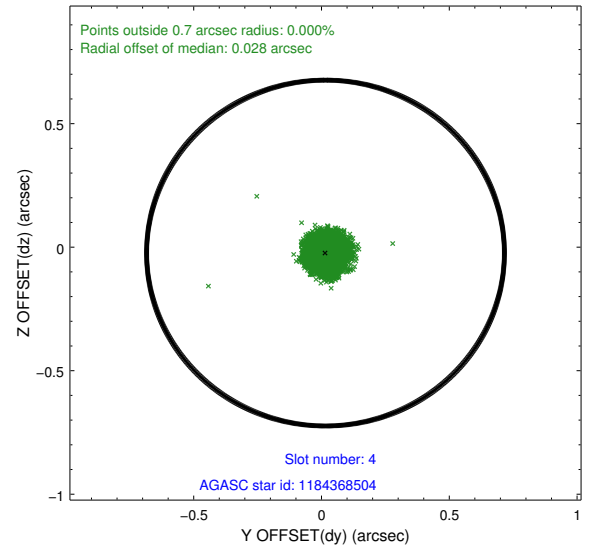
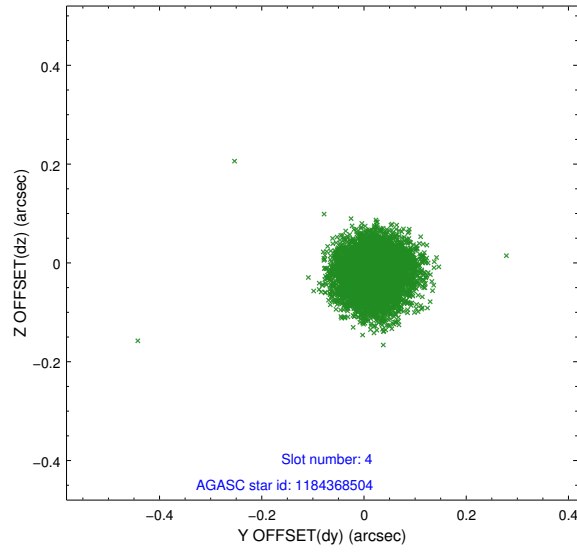
slot	status	id	mag	n_pts	med_dy	med_dz	dr1	dr2	ra	dec	mean_y	mean_z
0	FID	ACIS-I-1	7.24	3588	-0.016	0.046	0.012	0.019	0.000000	0.000000	933.76	-832.78
1	FID	ACIS-I-4	7.19	3588	0.091	-0.001	0.012	0.021	0.000000	0.000000	2154.09	1066.82
2	FID	ACIS-I-5	7.23	3589	-0.172	0.025	0.014	0.030	0.000000	0.000000	-1814.00	1065.05
3	GUIDE	1184368208	8.88	7177	0.048	-0.152	0.090	0.139	243.049252	-60.006066	-1668.18	2262.52
4	GUIDE	1184368504	8.07	7178	0.016	-0.024	0.054	0.086	244.221417	-60.888502	1822.97	768.34
5	GUIDE	1184371048	8.56	7174	0.058	0.087	0.062	0.102	243.777147	-61.267740	1925.89	-797.52
6	GUIDE	1184380840	9.03	7172	-0.087	0.061	0.099	0.155	241.482880	-61.030594	-1842.89	-2349.81
7	GUIDE	1143210296	8.67	7173	-0.036	0.032	0.085	0.138	242.795595	-59.872579	-2317.02	2402.50

2.4 Star Slots

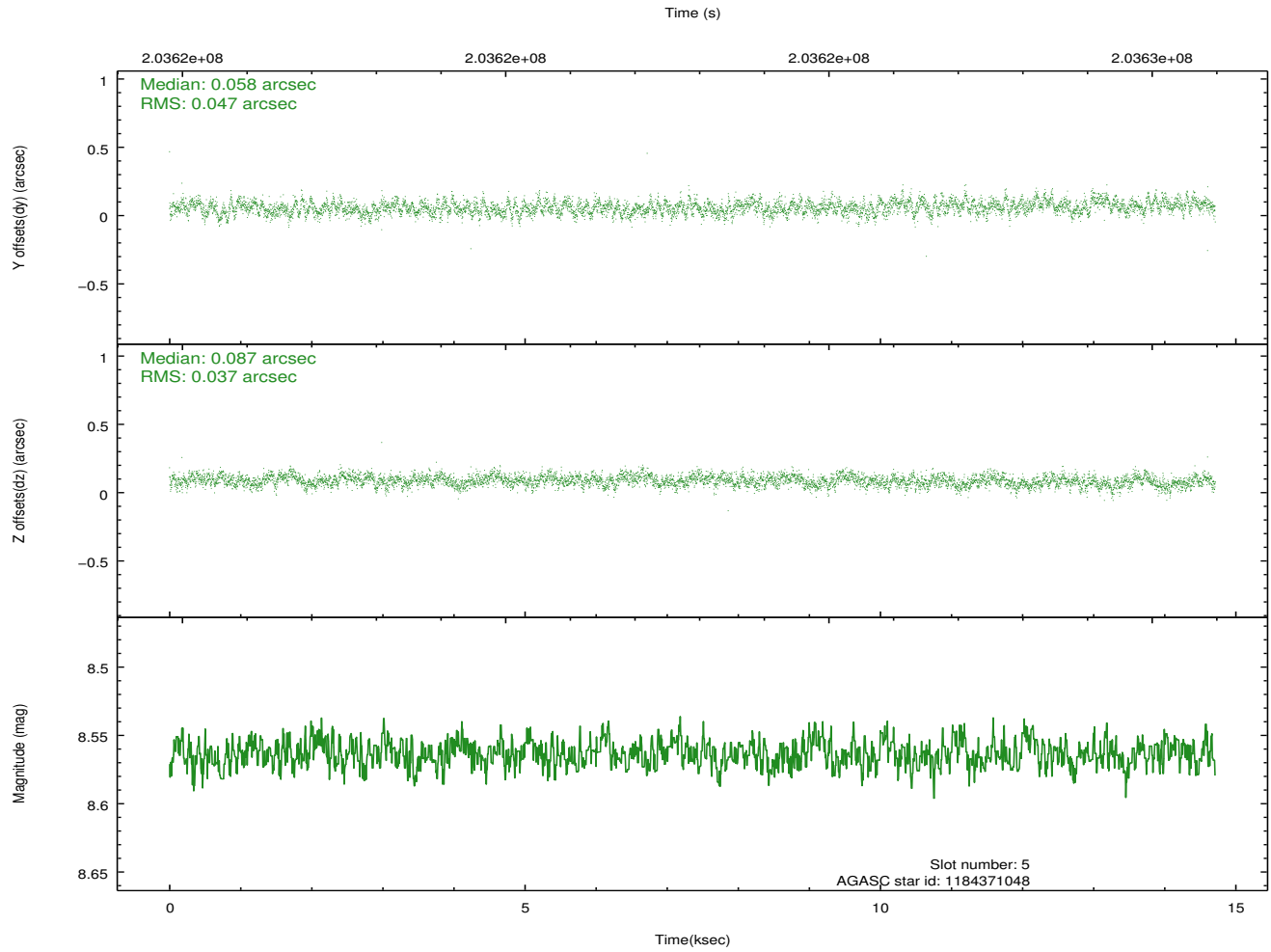
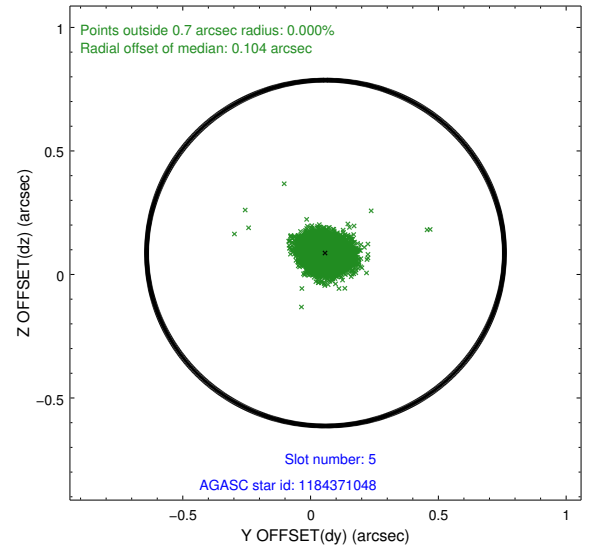
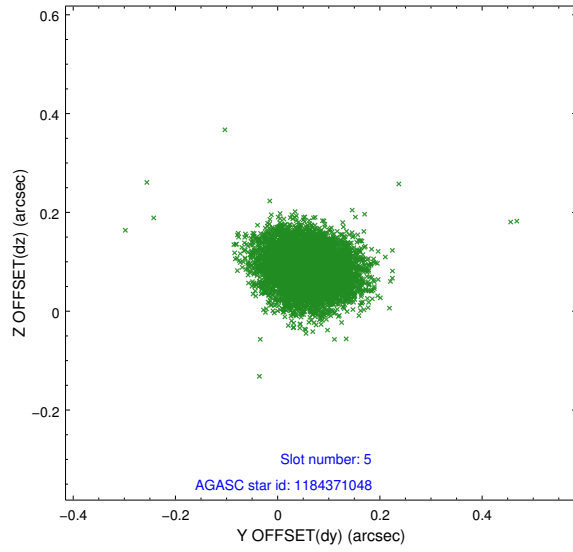
2.4.1 Slot 3



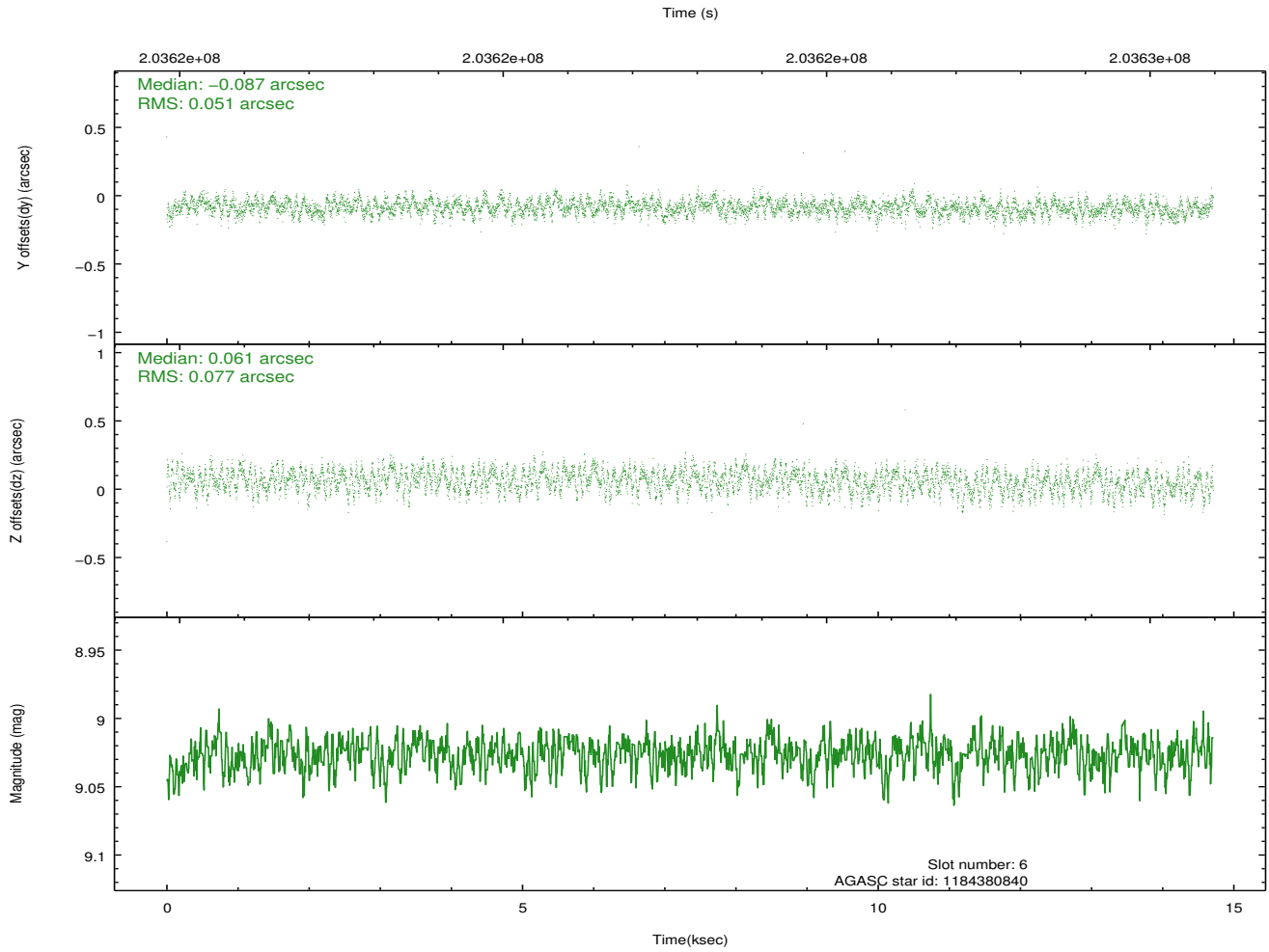
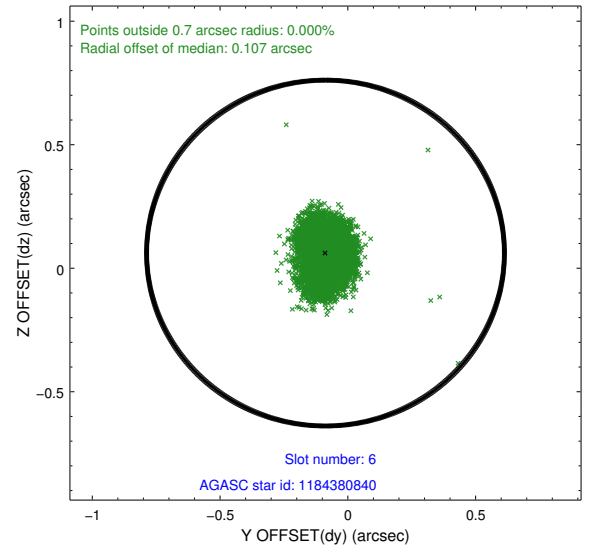
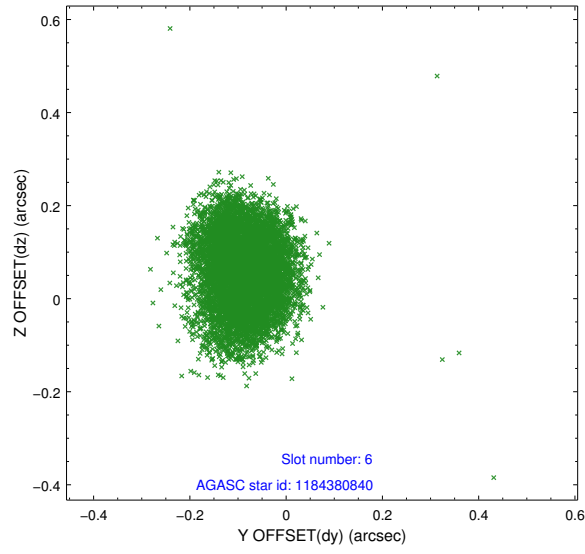
2.4.2 Slot 4



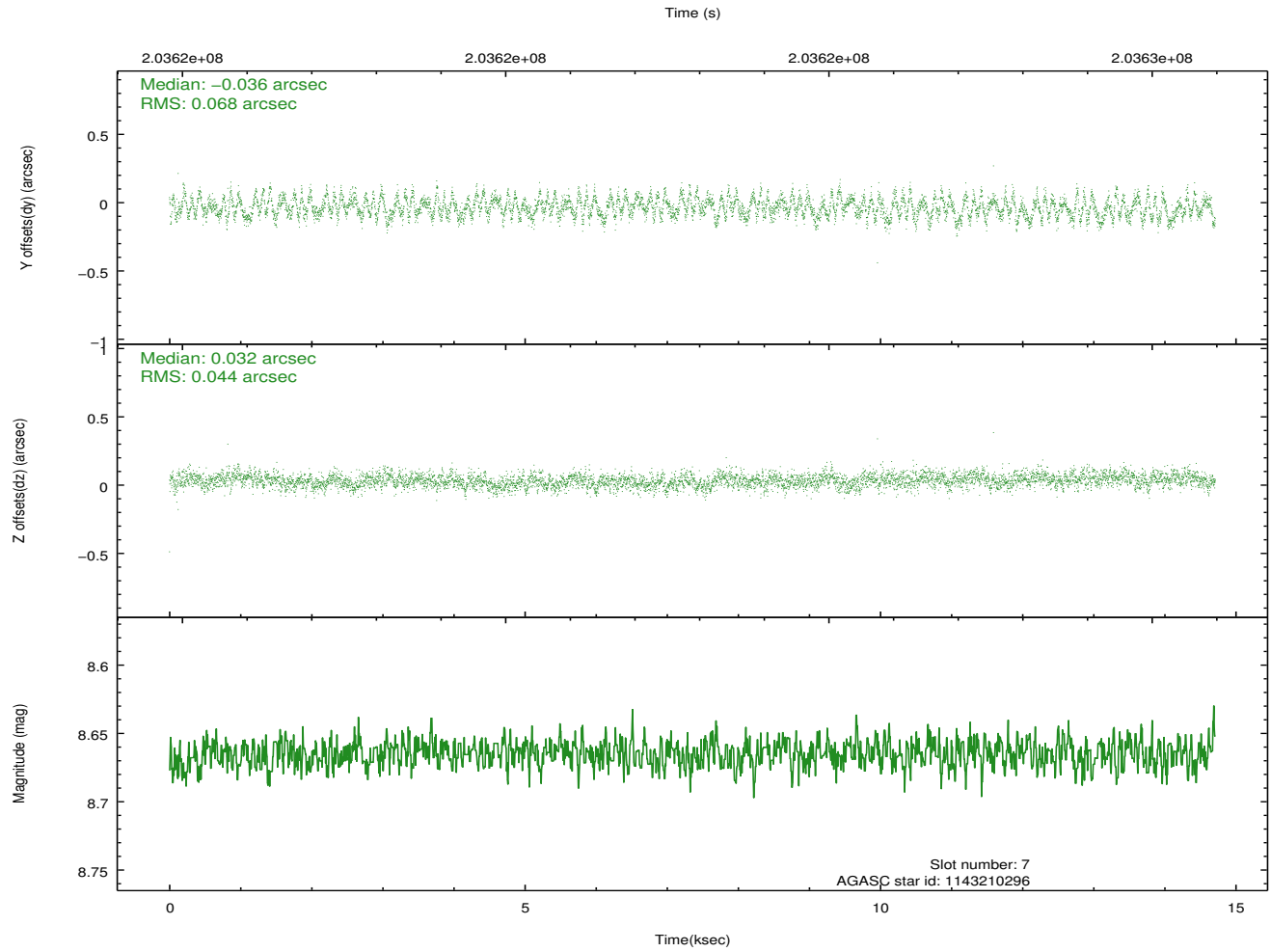
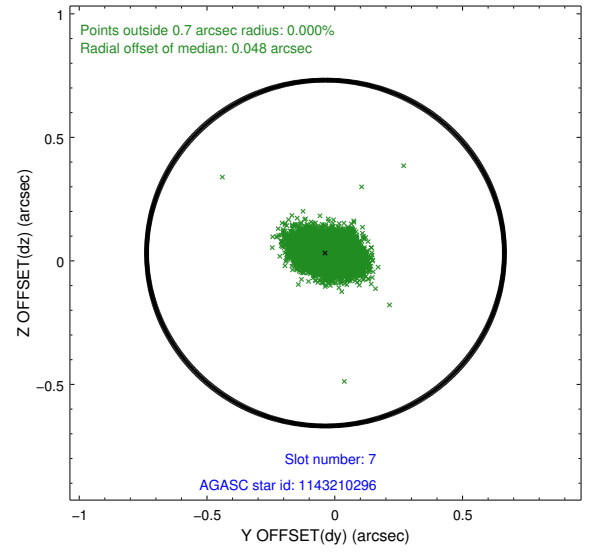
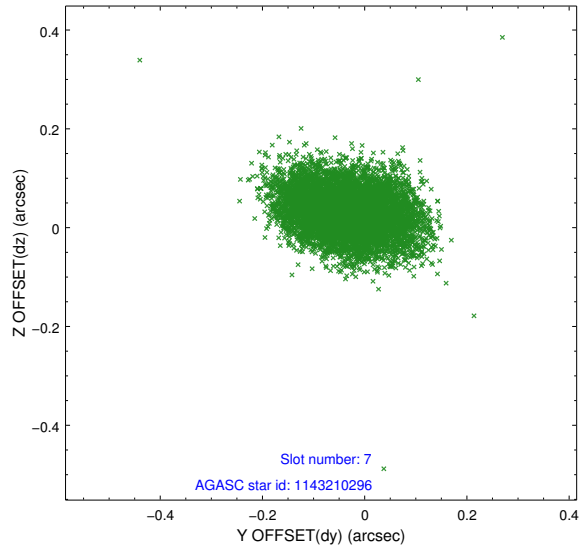
2.4.3 Slot 5



2.4.4 Slot 6

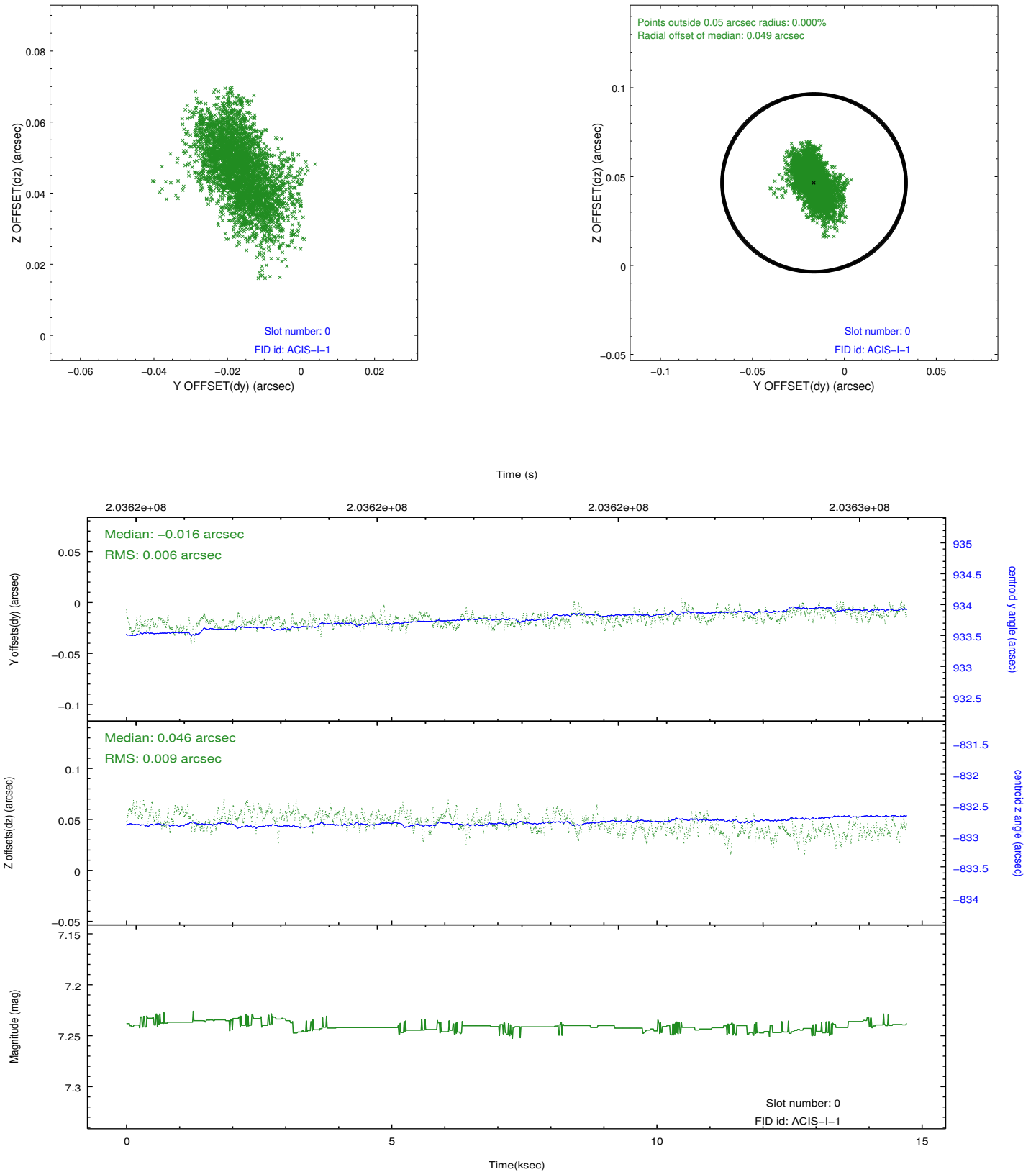


2.4.5 Slot 7

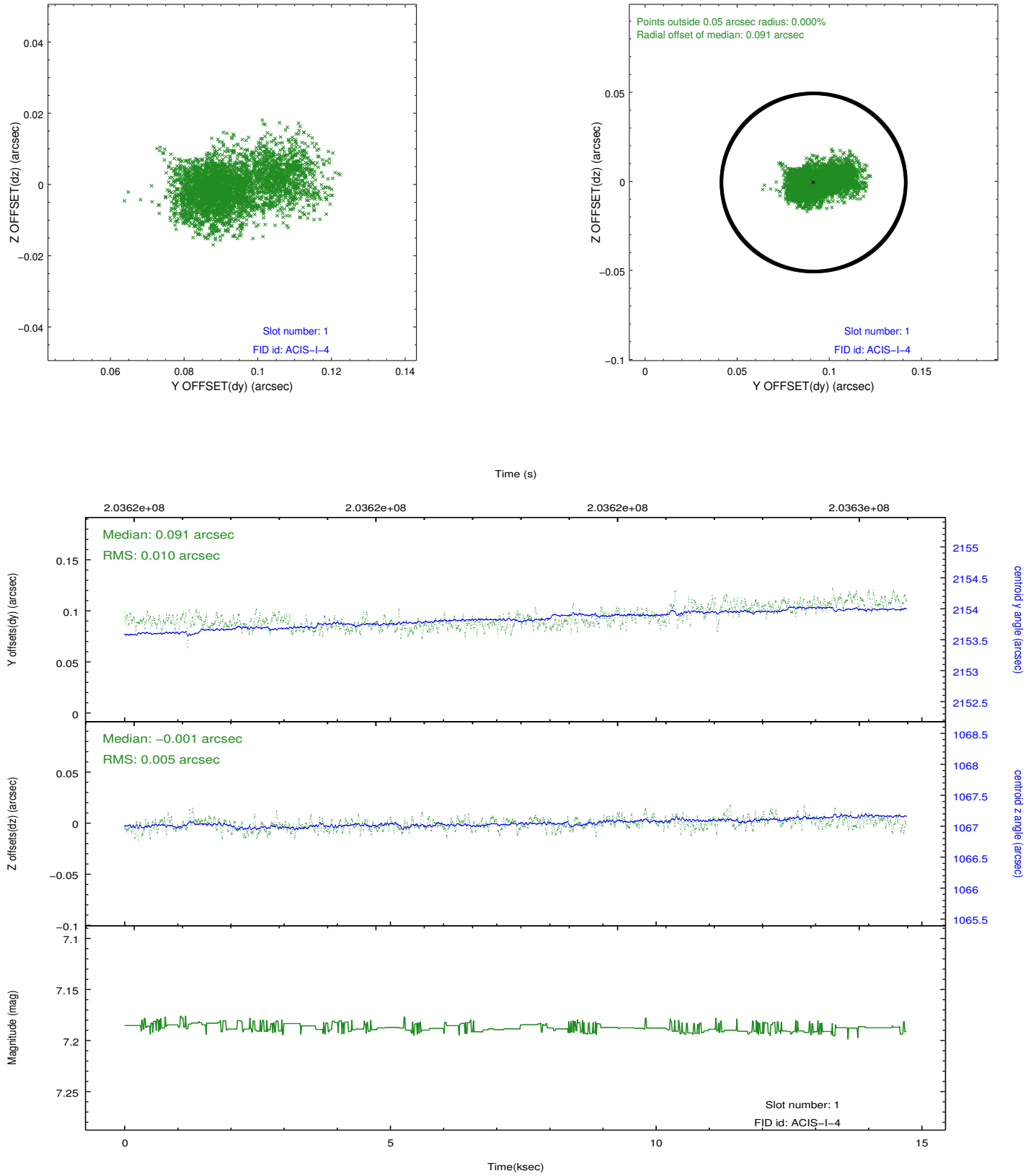


2.5 FID Slots

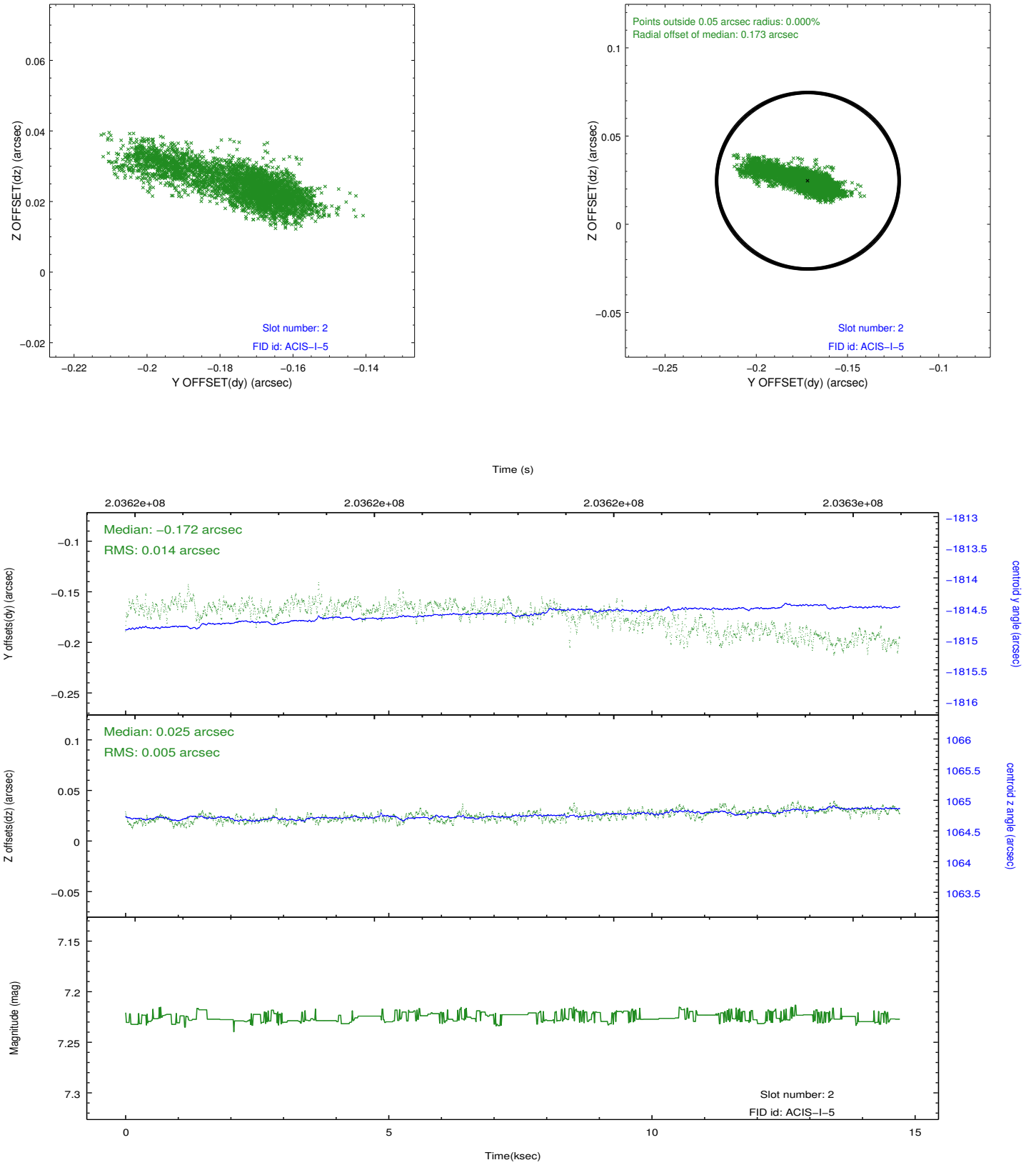
2.5.1 Slot 0



2.5.2 Slot 1



2.5.3 Slot 2



A Summary

A.1 Status

V&V Scientist	Jen Lauer
V&V Date (YYYY-MM-DD)	2012.12.18
V&V Edition	1
V&V Disposition and Status	OK
V&V Charge Time	14.703

A.2 Comments

Joint Proposal: XMM