

V&V Reference Report

L2 ASCDS Version : 8.4.5

Observation 4926 - L2 Version 3
Chandra X-Ray Center

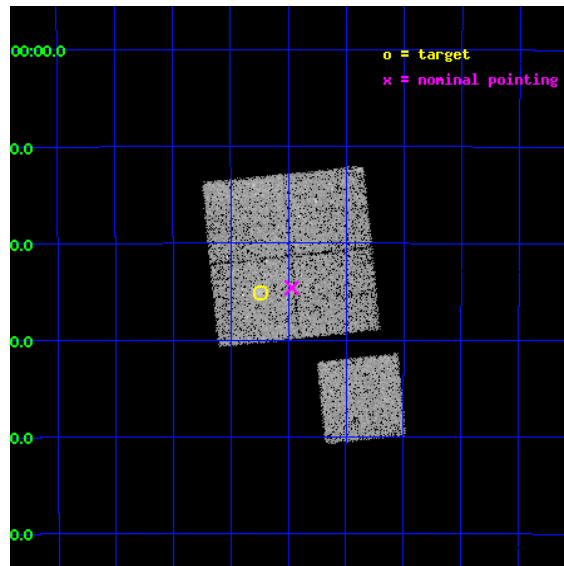
L2 Processing Date : Dec 3 2012

Contents

1	Front	2
2	OBI	3
2.1	OBI	3
2.1.1	Images	3
2.1.2	Bias	3
2.1.3	Parameters	4
2.1.4	Events	4
2.2	Compared Parameters	5
2.3	Aspect	6
2.4	Star Slots	9
2.4.1	Slot 3	9
2.4.2	Slot 4	10
2.4.3	Slot 5	11
2.4.4	Slot 6	12
2.4.5	Slot 7	13
2.5	FID Slots	14
2.5.1	Slot 0	14
2.5.2	Slot 1	15
2.5.3	Slot 2	16
A	Summary	17
A.1	Status	17
A.2	Comments	17

1 Front

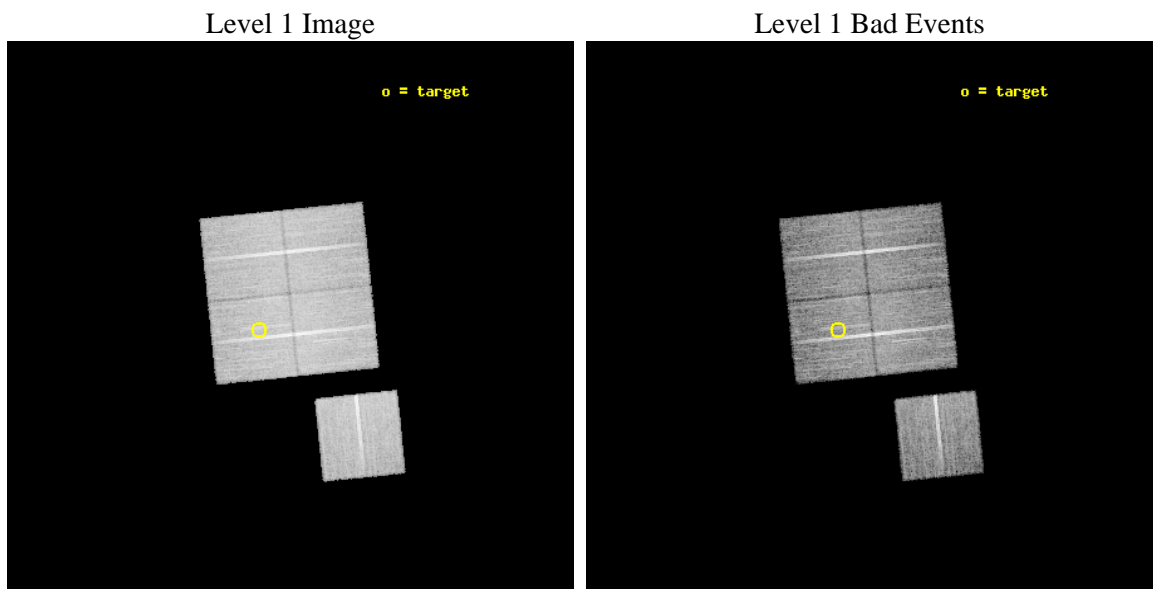
seq_num	800377	Sequence number
obs_id	4926	Observation id
title	Chandra snapshot survey of 10 distant clusters of galaxies	Proposa
observer	Dr. Stephen Murray	Principal investigator
object	CL0522-3625	Source name
dtcycle	0	
cycle	P	events from which exps? Prim/Second/Both
ra_targ	80.559167	Observer's specified target RA [deg]
dec_targ	-36.417778	Observer's specified target Dec [deg]
ra_nom	80.492303183559	Nominal RA [deg]
dec_nom	-36.410232711094	Nominal Dec [deg]
roll_nom	174.09443102127	Nominal Roll [deg]
revision	3	Processing version of data
ontime	18767.359003633	Sum of GTIs [s]
livetime	18522.149641922	Livetime [s]
ontime0	18767.359003633	Sum of GTIs [s]
ontime1	18767.358973712	Sum of GTIs [s]
ontime2	18770.49996388	Sum of GTIs [s]
ontime3	18767.359003633	Sum of GTIs [s]
ontime6	18770.49996388	Sum of GTIs [s]
l2events	48540	Number of level 2 events



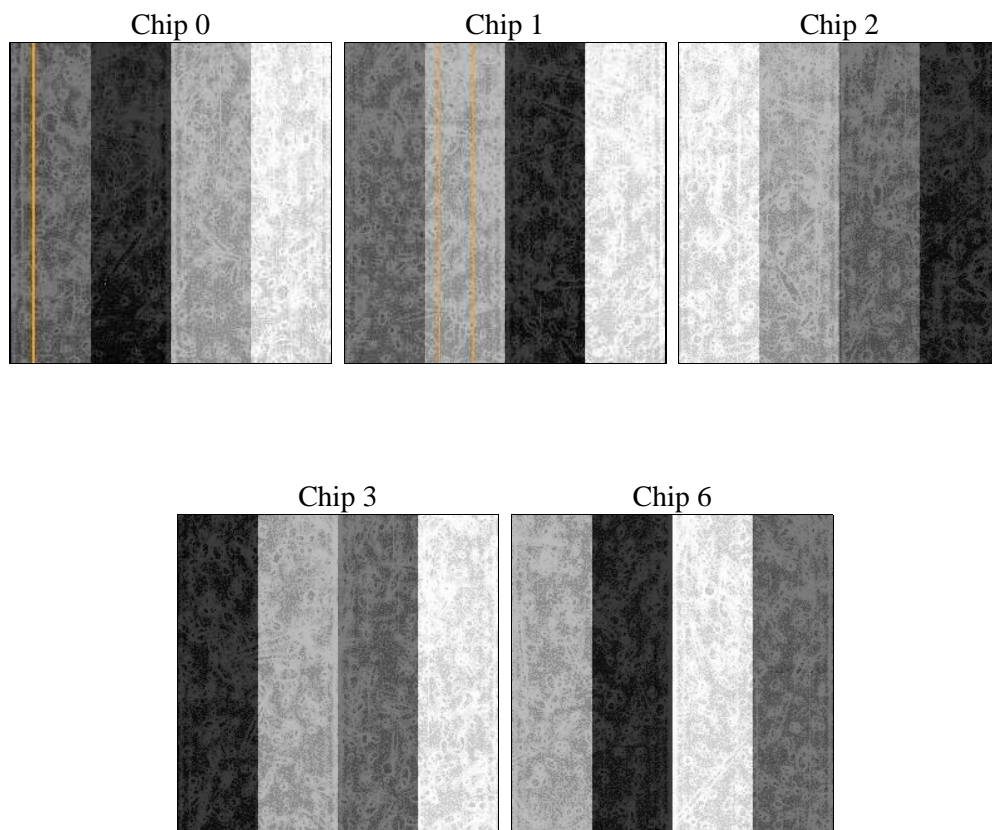
2 OBI

2.1 OBI

2.1.1 Images



2.1.2 Bias



2.1.3 Parameters

obi_num	0	Obi number	sched_exp_time	19000.000000	[s] Scheduled observation exposure time
ascdsver	8.4.5	Processing system revision	ontime	18767.359003633	Sum of GTIs [s]
caldbver	4.5.2	 	ontime0	18767.359003633	Sum of GTIs [s]
date	2012-12-03T05:08:04	Date and time of file creation	ontime1	18767.358973712	Sum of GTIs [s]
revision	3	Processing version of data	ontime2	18770.49996388	Sum of GTIs [s]
			ontime3	18767.359003633	Sum of GTIs [s]
			ontime6	18770.49996388	Sum of GTIs [s]
			l1events	584459	Number of level 1 events

2.1.4 Events

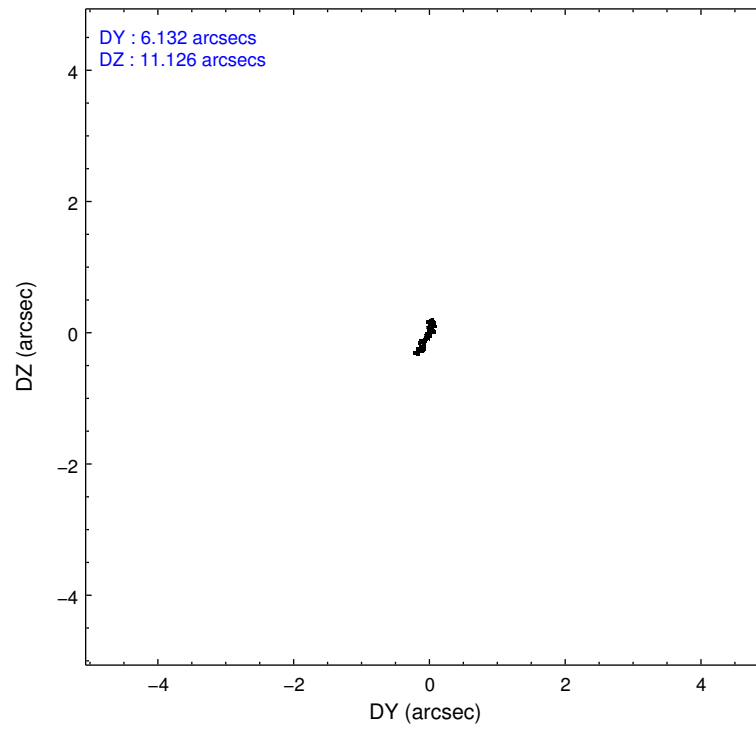
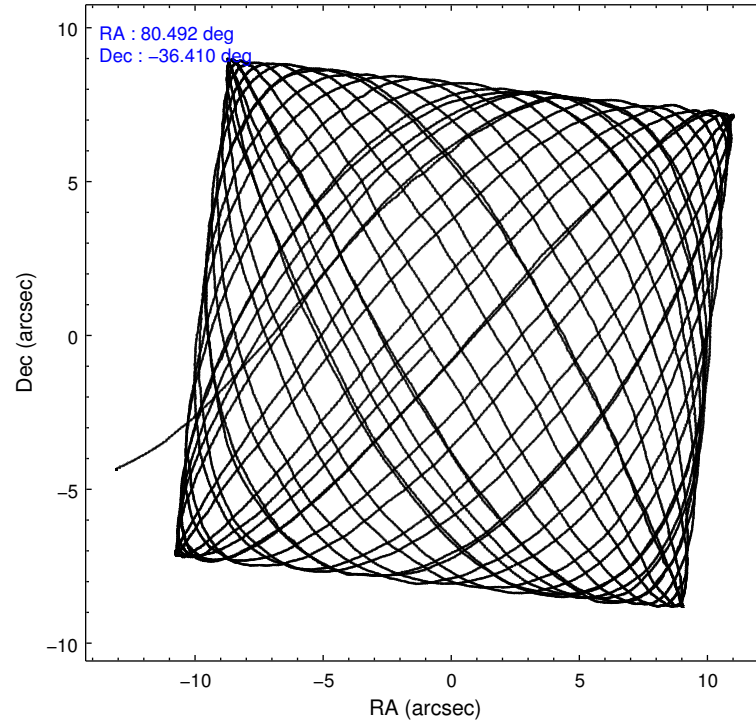
	ccd 0	ccd 1	ccd 2	ccd 3	ccd 6
level 1 events	110480	111699	127590	119798	114892
rejected events	98774	98997	116558	108094	103430
rejected %	89%	88%	91%	90%	90%

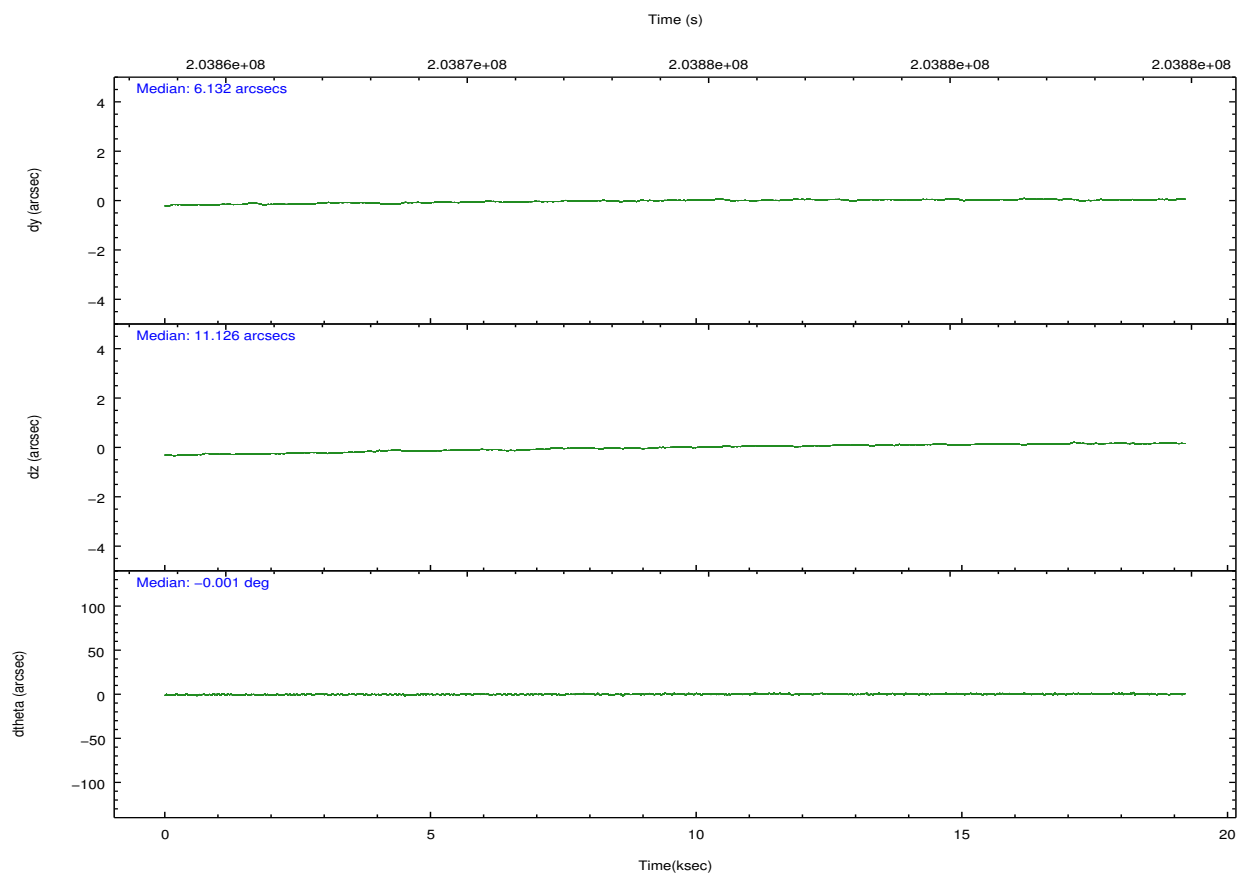
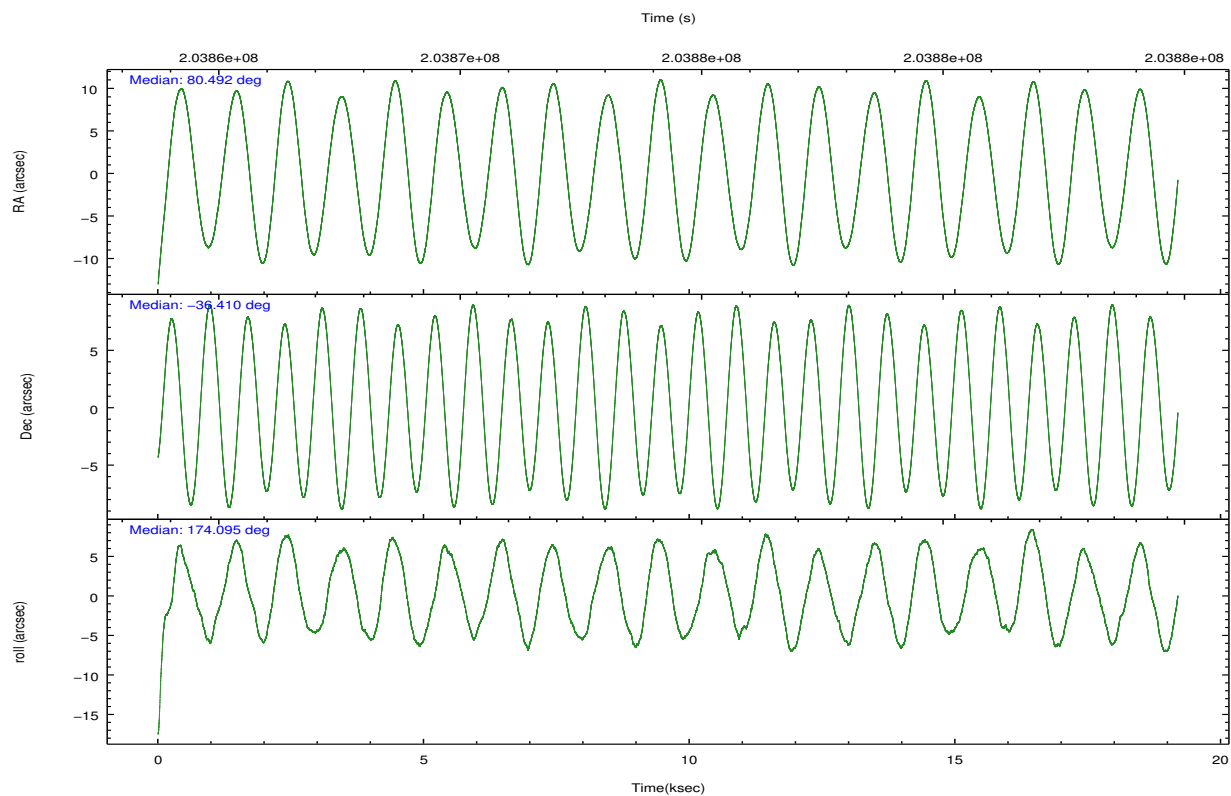
	ccd 0	ccd 1	ccd 2	ccd 3	ccd 6
grade 0 events	4068	4505	3896	4417	3879
	3%	4%	3%	3%	3%
grade 1 events	58	48	59	60	61
	0%	0%	0%	0%	0%
grade 2 events	2757	2783	2661	2481	2421
	2%	2%	2%	2%	2%
grade 3 events	1373	1450	1212	1326	1316
	1%	1%	0%	1%	1%
grade 4 events	1257	1465	1223	1330	1291
	1%	1%	0%	1%	1%
grade 5 events	4167	4537	3857	4452	4405
	3%	4%	3%	3%	3%
grade 6 events	2254	2501	2044	2153	2560
	2%	2%	1%	1%	2%
grade 7 events	94546	94410	112638	103579	98959
	85%	84%	88%	86%	86%

2.2 Compared Parameters

Parameter	Planned	Actual	Parameter	Planned	Actual
Instrument	ACIS	ACIS	Obspar format version number	7	7
Detector	ACIS-01236	ACIS-01236	Obspar file type	PREDICTED	ACTUAL
Grating	NONE	NONE	Obspar update status	NONE	UPDATED
Data mode	VFAINT	VFAINT	Number of optional ACIS chips dropped	0	0
Observation mode	POINTING	POINTING	On-chip summing requested	N	N
[deg] Pointing RA	80.523345	80.49230318355947	Subarray requested	NONE	NONE
[deg] Pointing Dec	-36.398950	-36.41023271109352	Alternating exposures requested	N	N
[deg] Pointing Roll	173.904170	174.0944310212672	[s] Primary exposure time	0.000000	3.1
[mm] SIM focus pos	-0.782348	-0.7809083437167272			
[mm] SIM defocus	0	0.001439871863259334			
[mm] SIM translation stage pos	-225.840463	-225.8458576473255			
[mm] SIM translation stage offset	-7.752	-7.746595355604228			
[s] Observation start time (MET)	203864901.184000	203864291.89993			
Observation start date	2004-06-17T13:07:17	2004-06-17T12:58:11			
[s] Observation end time (MET)	203883901.184000	203885434.06337			
Observation end date	2004-06-17T18:23:57	2004-06-17T18:50:34			
Read mode	TIMED	TIMED			

2.3 Aspect



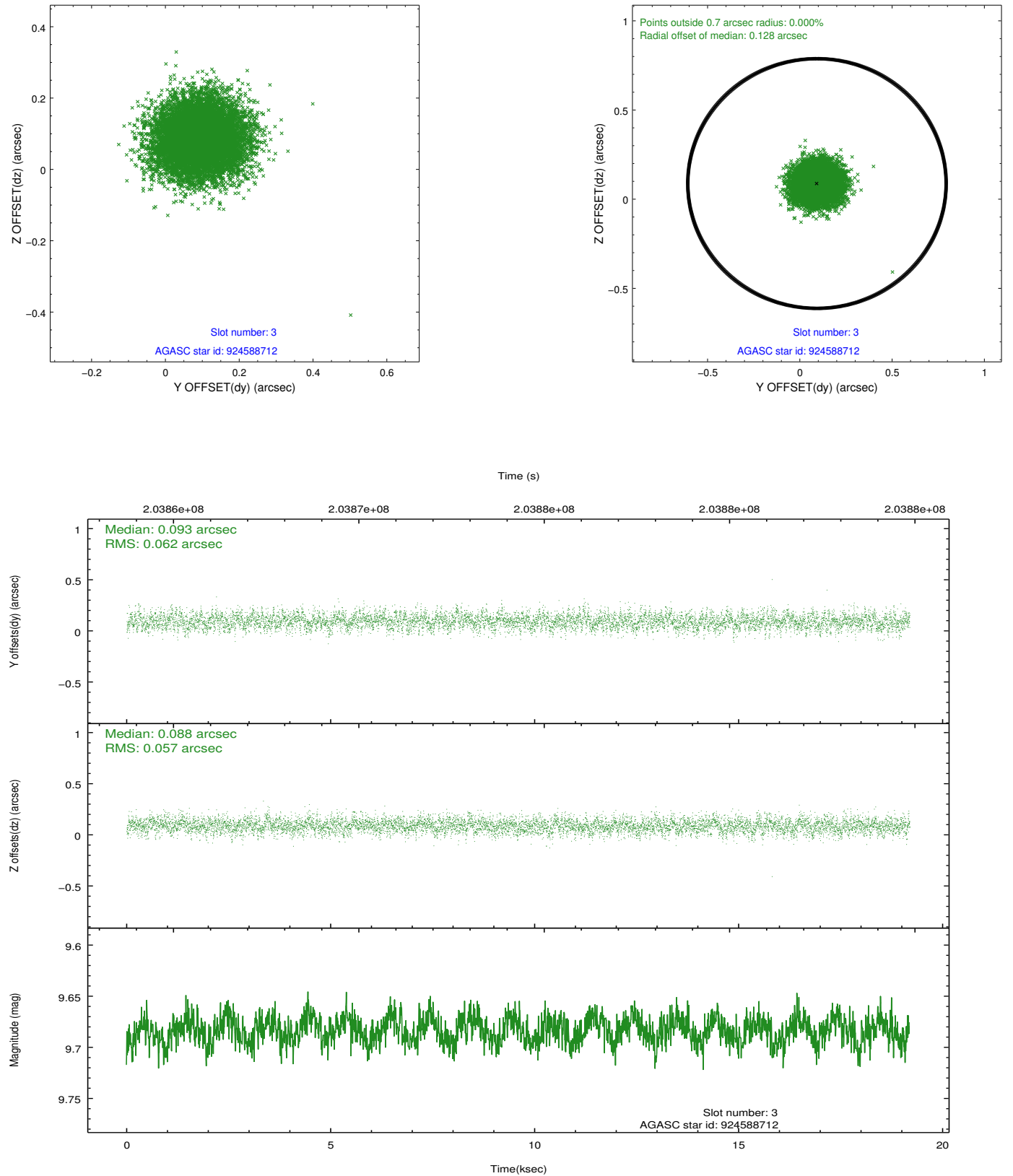


Slot Statistics

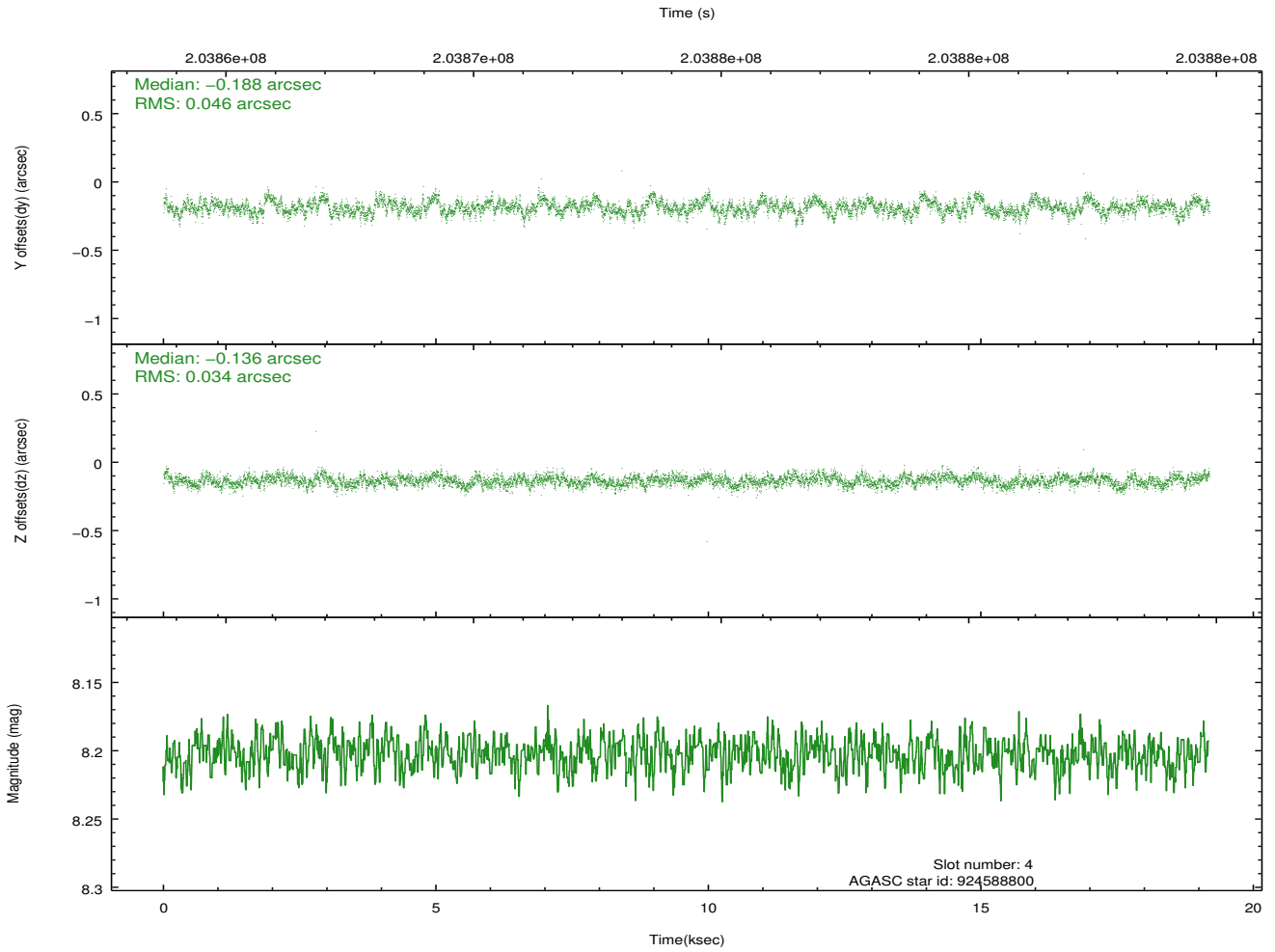
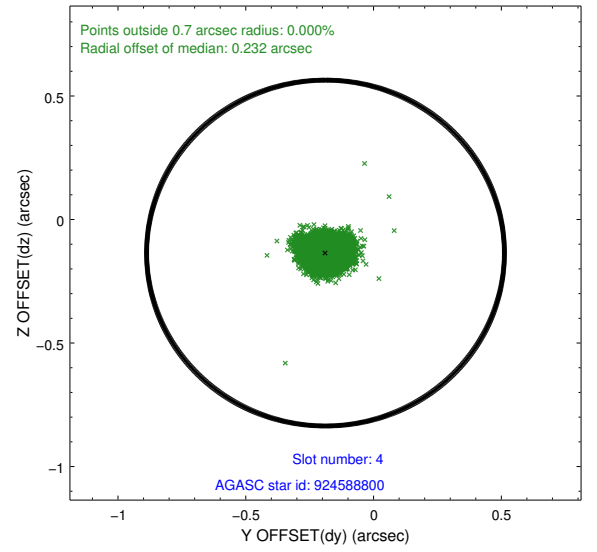
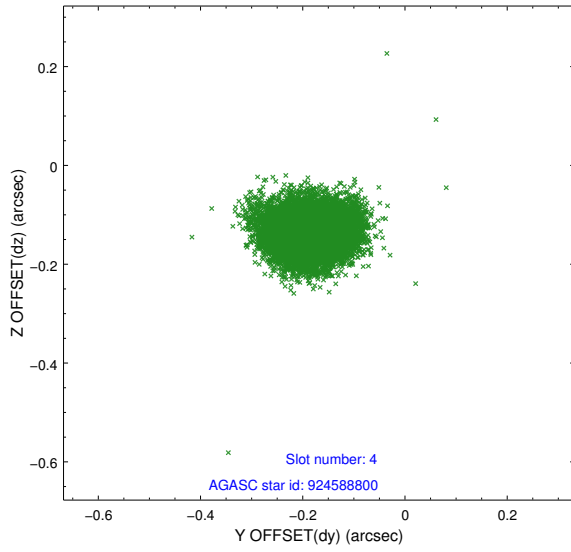
slot	status	id	mag	n_pts	med_dy	med_dz	dr1	dr2	ra	dec	mean_y	mean_z
0	FID	ACIS-I-1	7.23	4680	0.115	-0.096	0.007	0.013	0.000000	0.000000	933.55	-993.74
1	FID	ACIS-I-5	7.22	4681	-0.219	0.108	0.007	0.012	0.000000	0.000000	-1814.74	903.87
2	FID	ACIS-I-6	7.25	4680	0.013	0.059	0.009	0.014	0.000000	0.000000	398.82	1548.51
3	GUIDE	924588712	9.68	9352	0.093	0.088	0.090	0.144	79.759627	-36.739722	2059.57	1462.47
4	GUIDE	924588800	8.20	9363	-0.188	-0.136	0.060	0.098	79.855531	-36.745092	1782.43	1450.51
5	GUIDE	924592688	9.87	9349	0.067	0.006	0.114	0.183	79.756855	-36.959479	1977.43	2249.78
6	GUIDE	924598512	8.16	9357	0.016	0.112	0.055	0.088	80.814637	-36.371896	-829.34	-184.71
7	GUIDE	926288656	8.05	9360	0.011	-0.064	0.066	0.108	81.320723	-36.495523	-2332.75	110.28

2.4 Star Slots

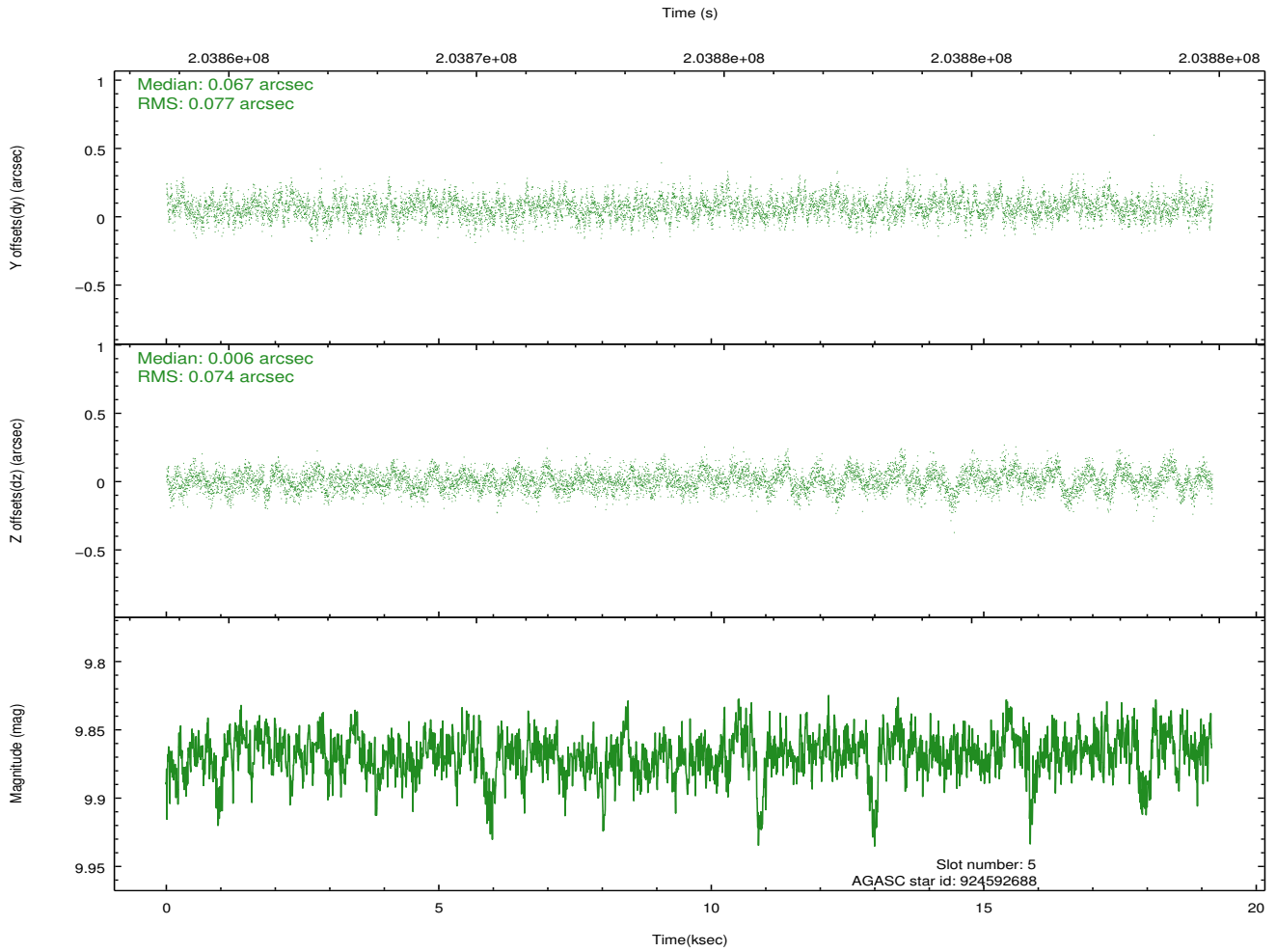
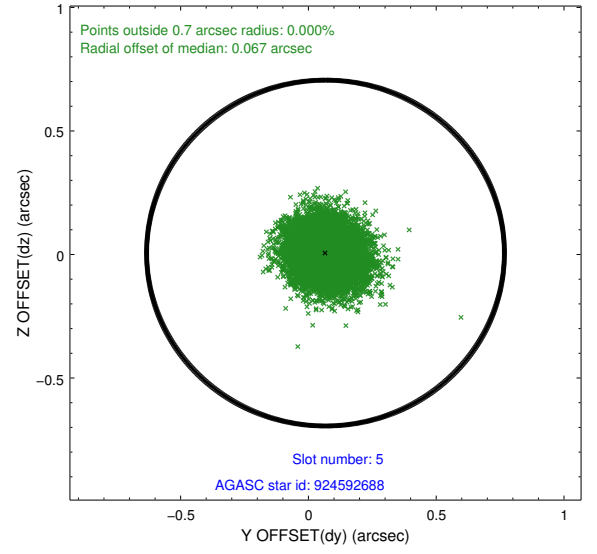
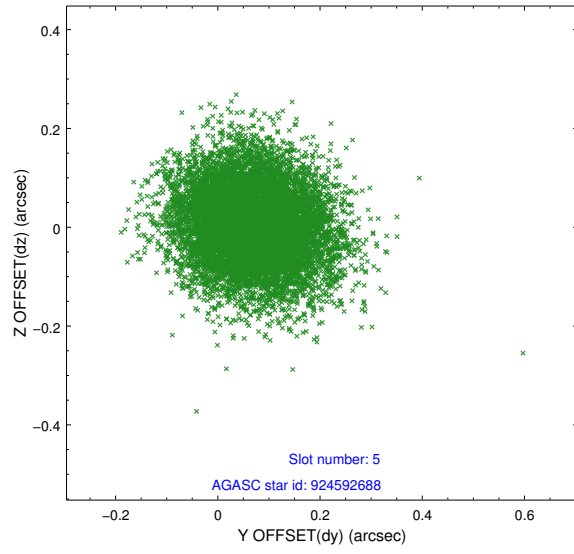
2.4.1 Slot 3



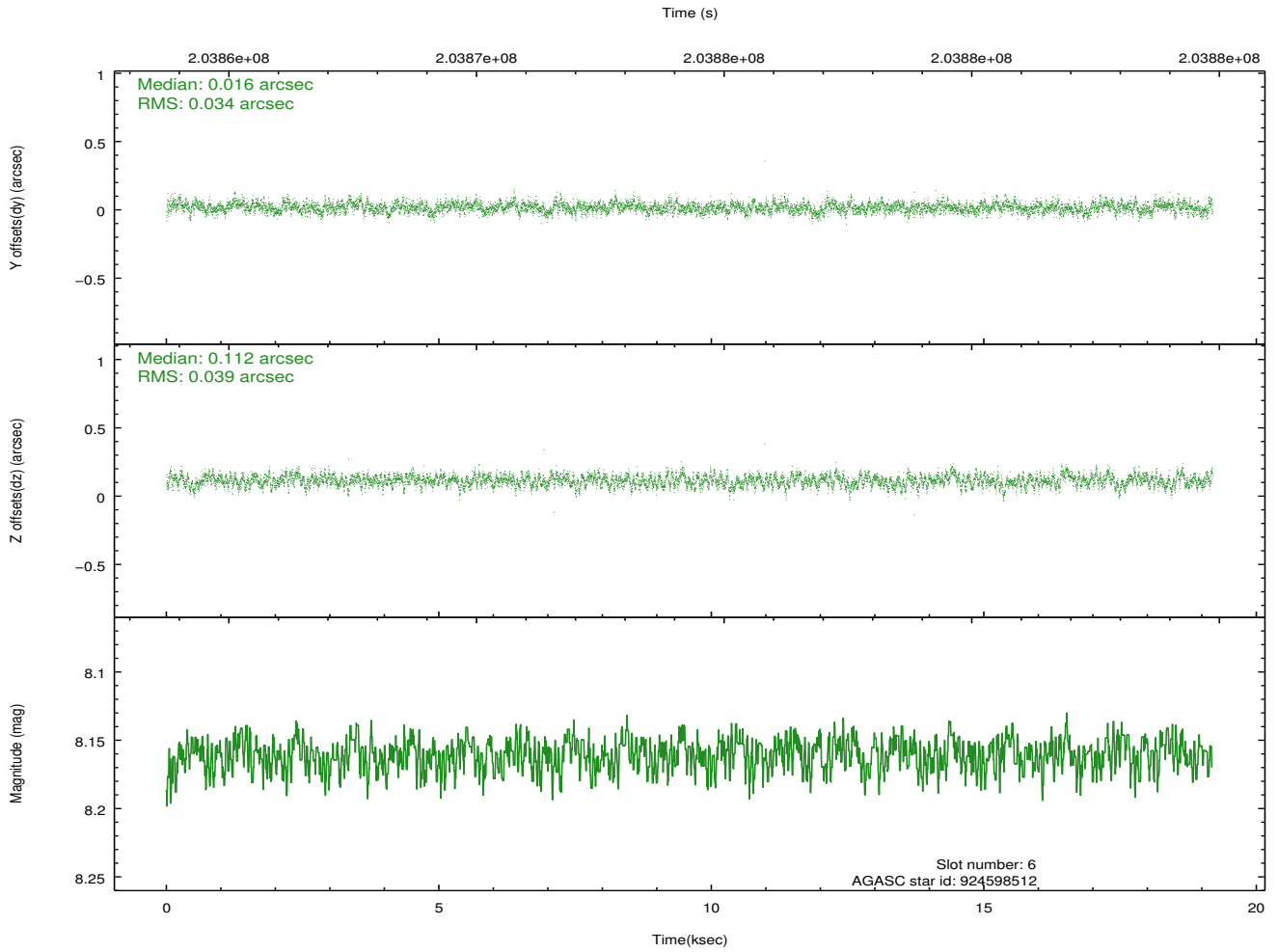
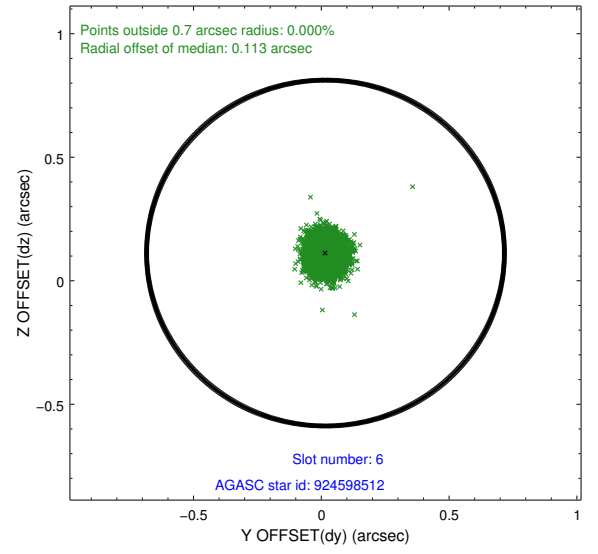
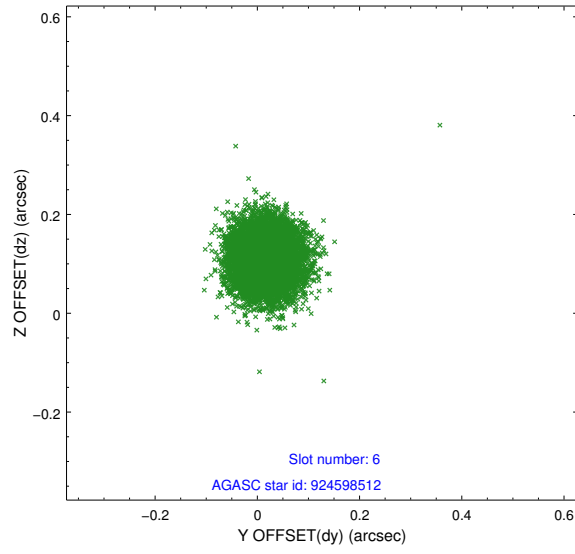
2.4.2 Slot 4



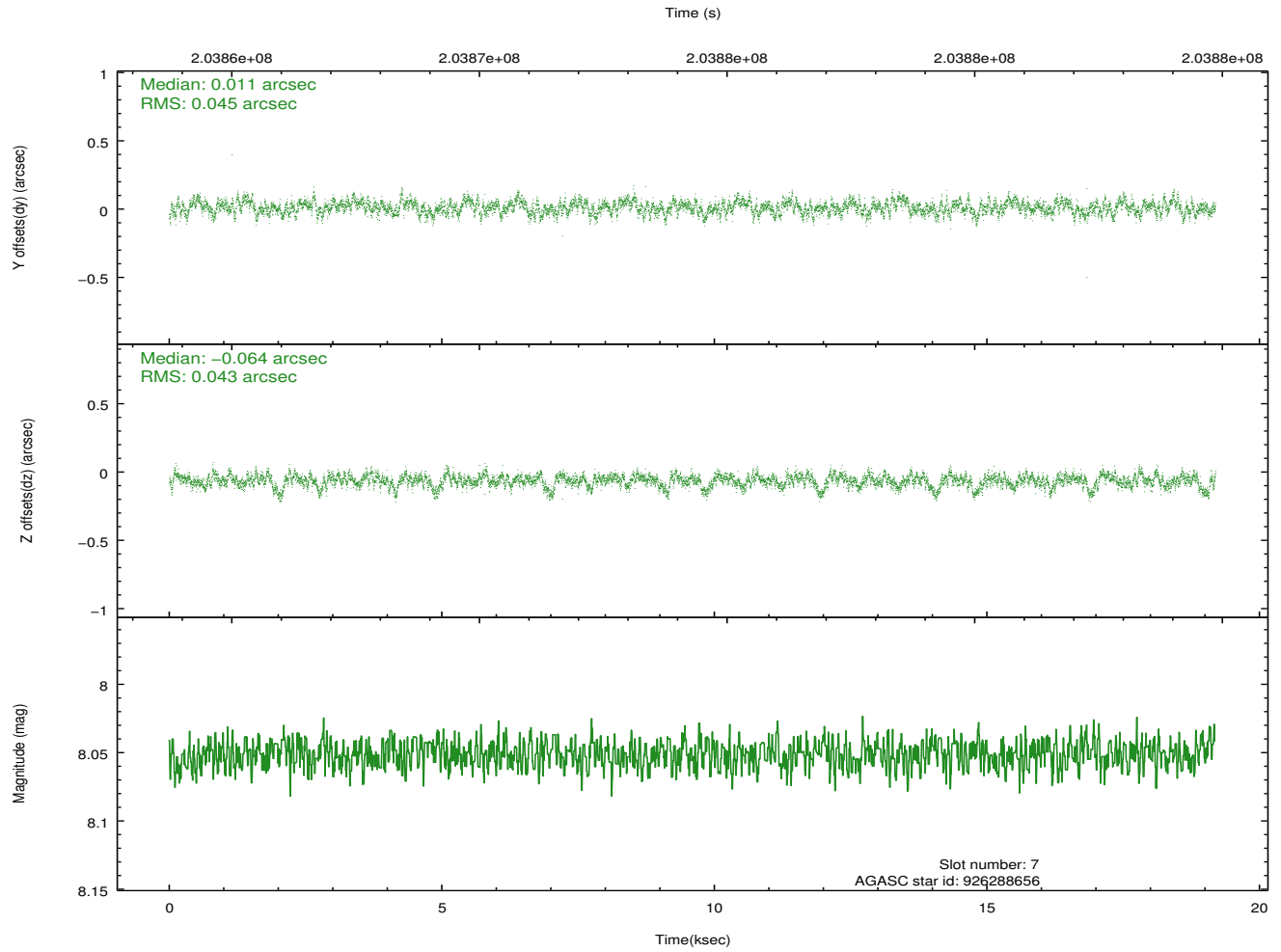
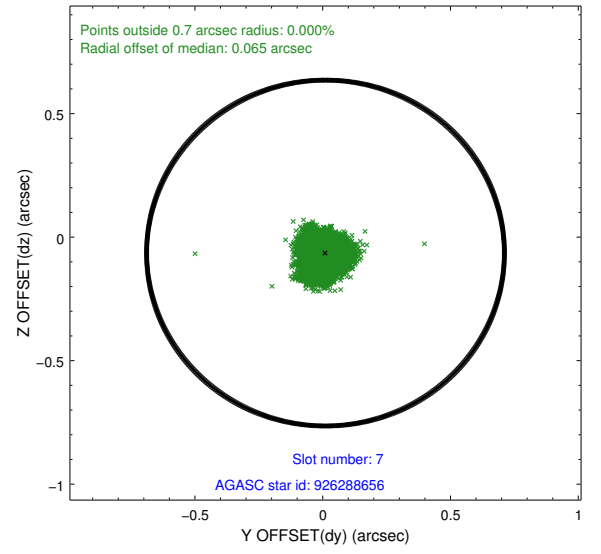
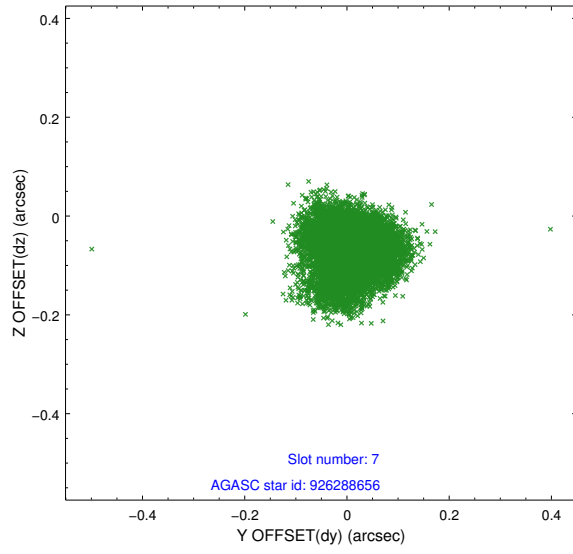
2.4.3 Slot 5



2.4.4 Slot 6

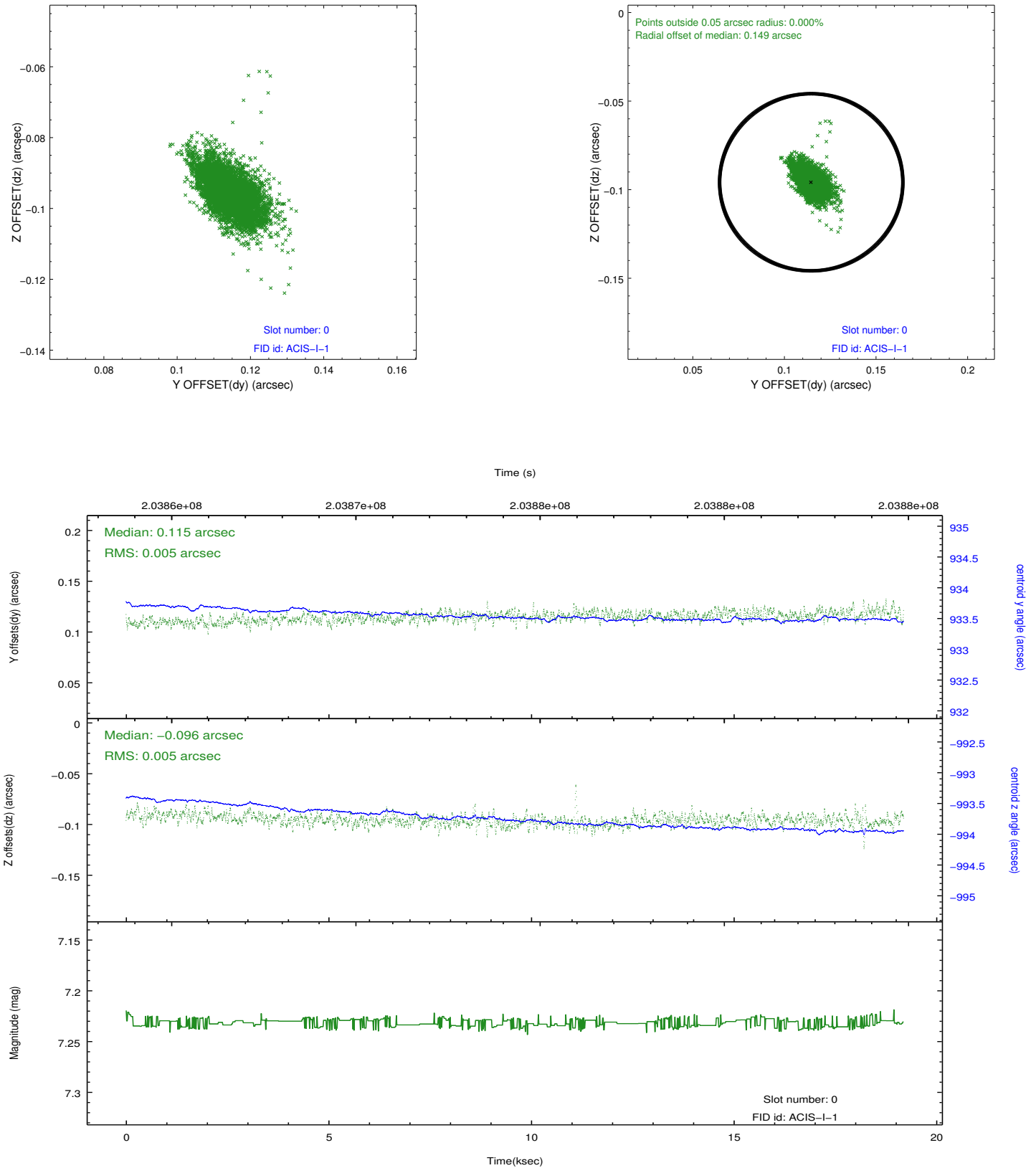


2.4.5 Slot 7

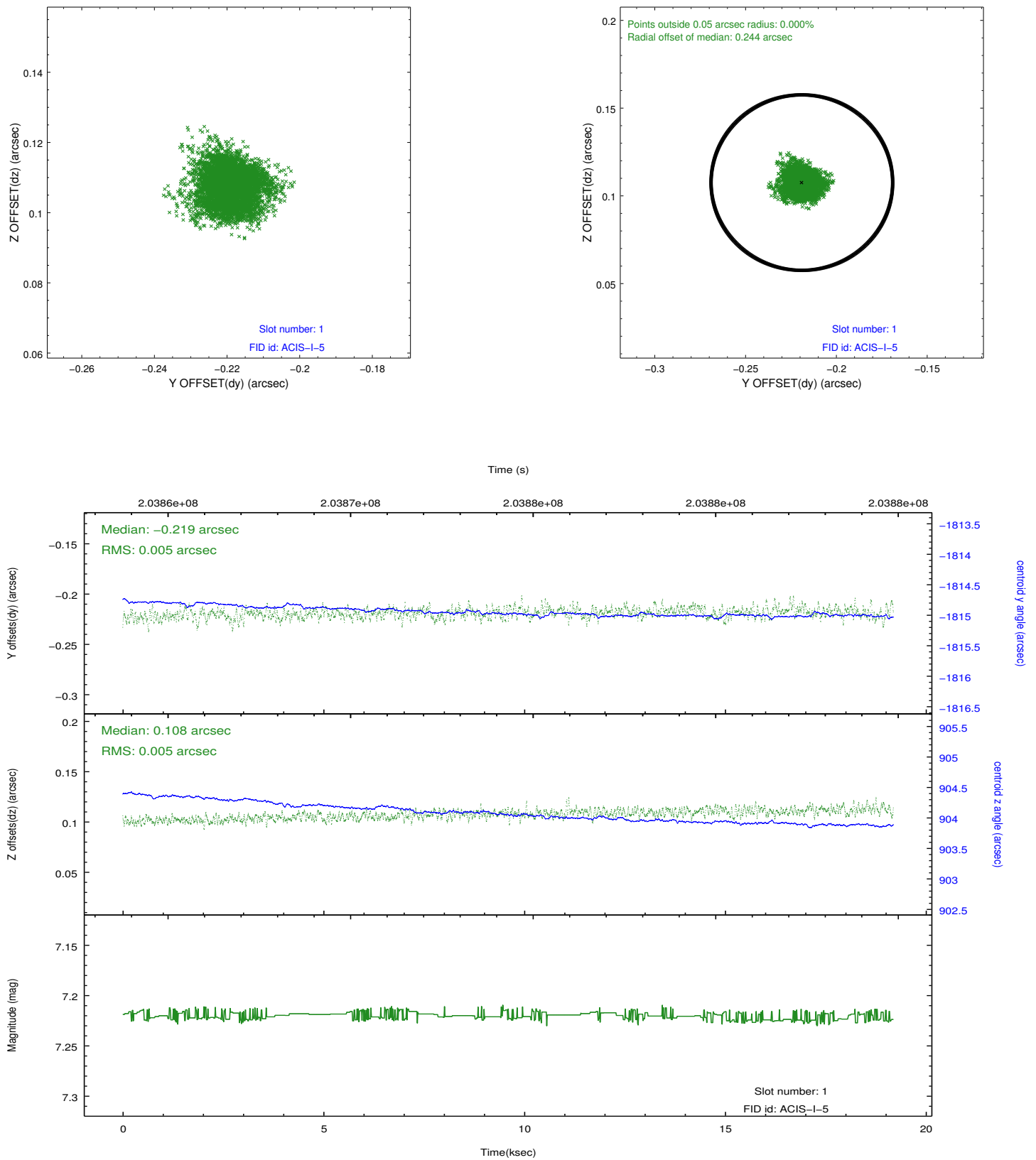


2.5 FID Slots

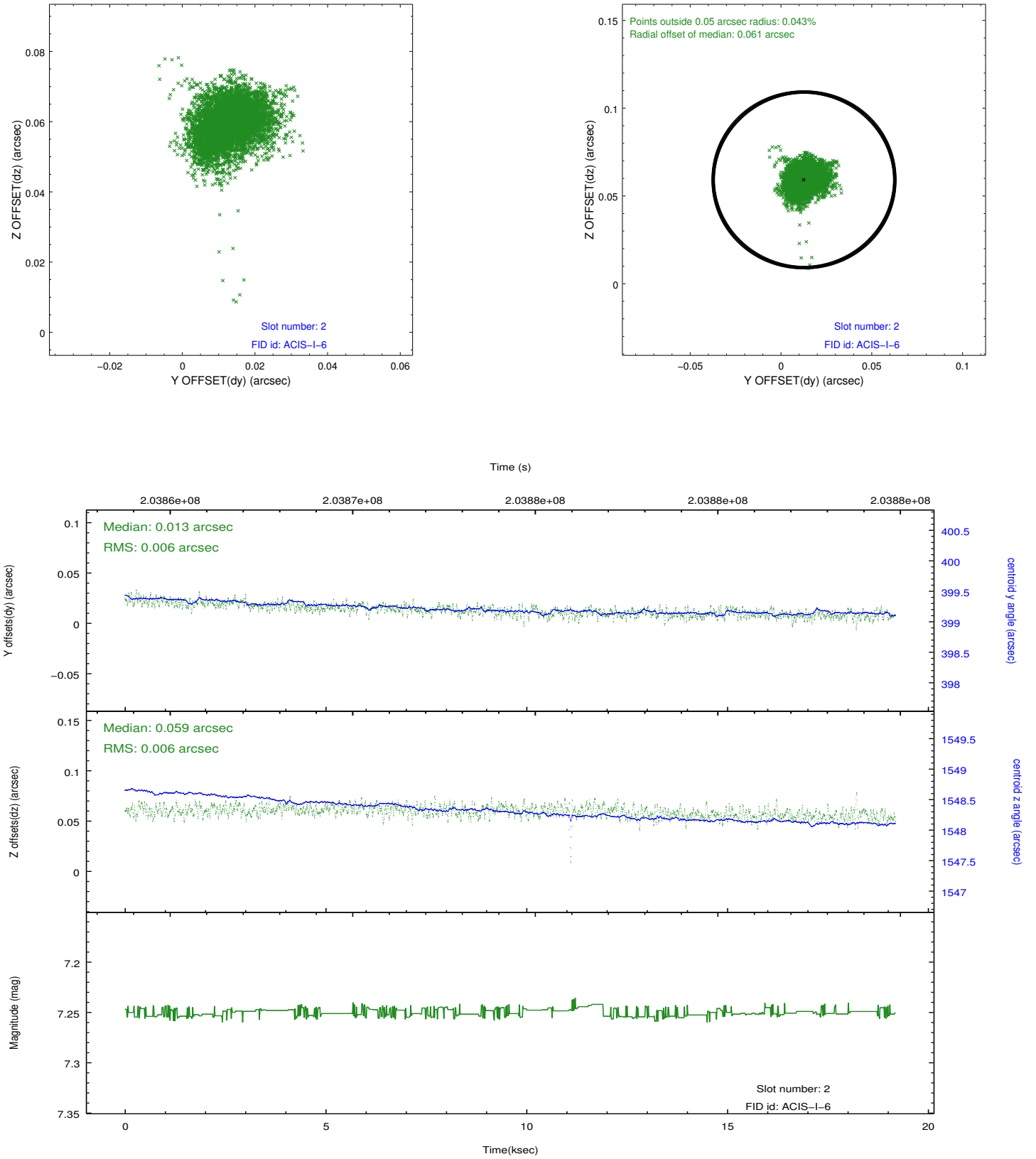
2.5.1 Slot 0



2.5.2 Slot 1



2.5.3 Slot 2



A Summary

A.1 Status

V&V Scientist	Jen Lauer
V&V Date (YYYY-MM-DD)	2012.12.18
V&V Edition	1
V&V Disposition and Status	OK
V&V Charge Time	18.77

A.2 Comments