

# V&V Reference Report

## L2 ASCDS Version : 8.4.5

Observation 4836 - L2 Version 3  
Chandra X-Ray Center

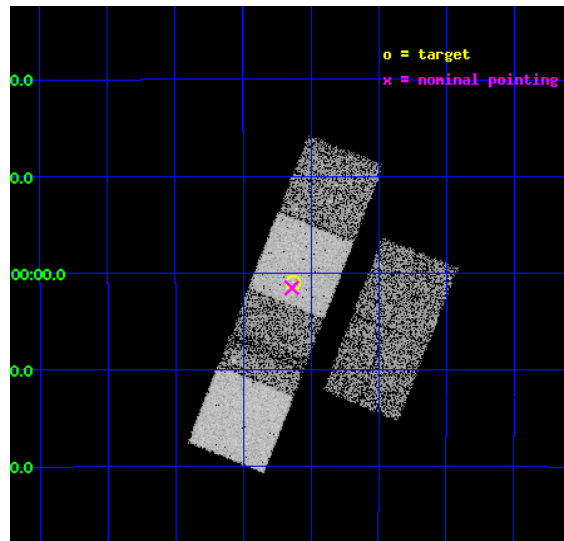
L2 Processing Date : Nov 7 2012

## Contents

<b>1</b>	<b>Front</b>	<b>2</b>
<b>2</b>	<b>OBI</b>	<b>3</b>
2.1	OBI . . . . .	3
2.1.1	Images . . . . .	3
2.1.2	Bias . . . . .	3
2.1.3	Parameters . . . . .	4
2.1.4	Events . . . . .	4
2.2	Compared Parameters . . . . .	5
2.3	Aspect . . . . .	6
2.4	Star Slots . . . . .	9
2.4.1	Slot 3 . . . . .	9
2.4.2	Slot 4 . . . . .	10
2.4.3	Slot 5 . . . . .	11
2.4.4	Slot 6 . . . . .	12
2.4.5	Slot 7 . . . . .	13
2.5	FID Slots . . . . .	14
2.5.1	Slot 0 . . . . .	14
2.5.2	Slot 1 . . . . .	15
2.5.3	Slot 2 . . . . .	16
<b>A</b>	<b>Summary</b>	<b>17</b>
A.1	Status . . . . .	17
A.2	Comments . . . . .	17

# 1 Front

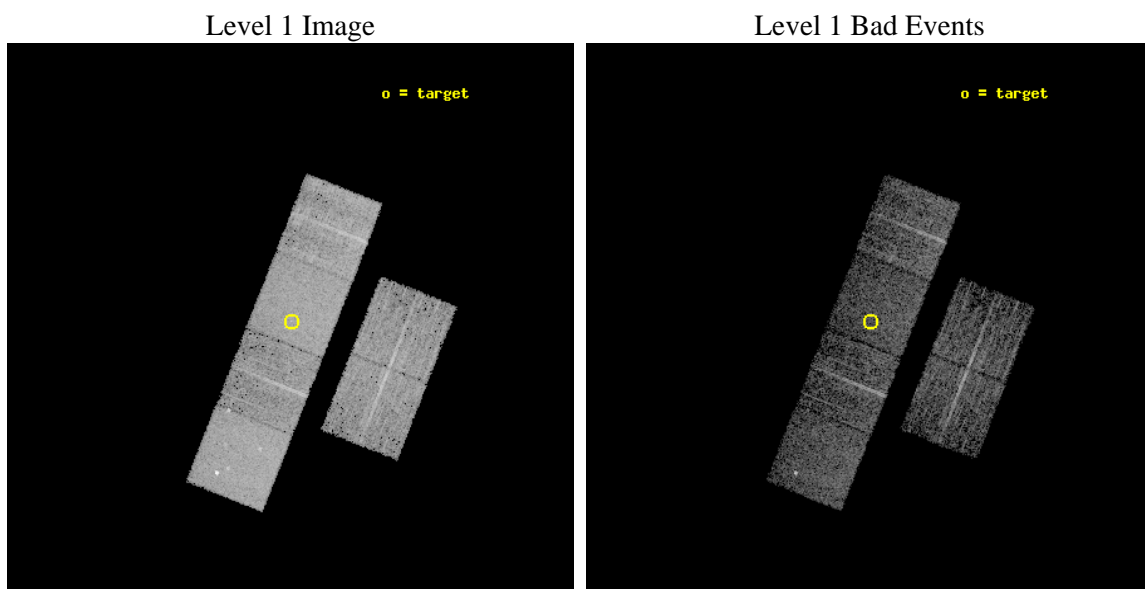
seq_num	700918	Sequence number
obs_id	4836	Observation id
title	Constraining the Hard-X-ray Through Submm SEDs of a Complete Sample of Broad Absorption Line Quasars	Proposal title
observer	Dr. Sarah Gallagher	Principal investigator
object	LBQS 2211-1915	Source name
dtcycle	0	&#160
cycle	P	events from which exps? Prim/Second/Both
ra_targ	333.657917	Observer's specified target RA [deg]
dec_targ	-19.016056	Observer's specified target Dec [deg]
ra_nom	333.66003283035	Nominal RA [deg]
dec_nom	-19.02555682983	Nominal Dec [deg]
roll_nom	291.52852728943	Nominal Roll [deg]
revision	3	Processing version of data
ontime	5964.636585325	Sum of GTIs [s]
livetime	5889.1087654086	Livetime [s]
ontime2	5964.6776253283	Sum of GTIs [s]
ontime3	5964.5134653151	Sum of GTIs [s]
ontime5	5964.5955453217	Sum of GTIs [s]
ontime6	5964.5545053184	Sum of GTIs [s]
ontime7	5964.636585325	Sum of GTIs [s]
ontime8	5964.4724253416	Sum of GTIs [s]
l2events	60513	Number of level 2 events



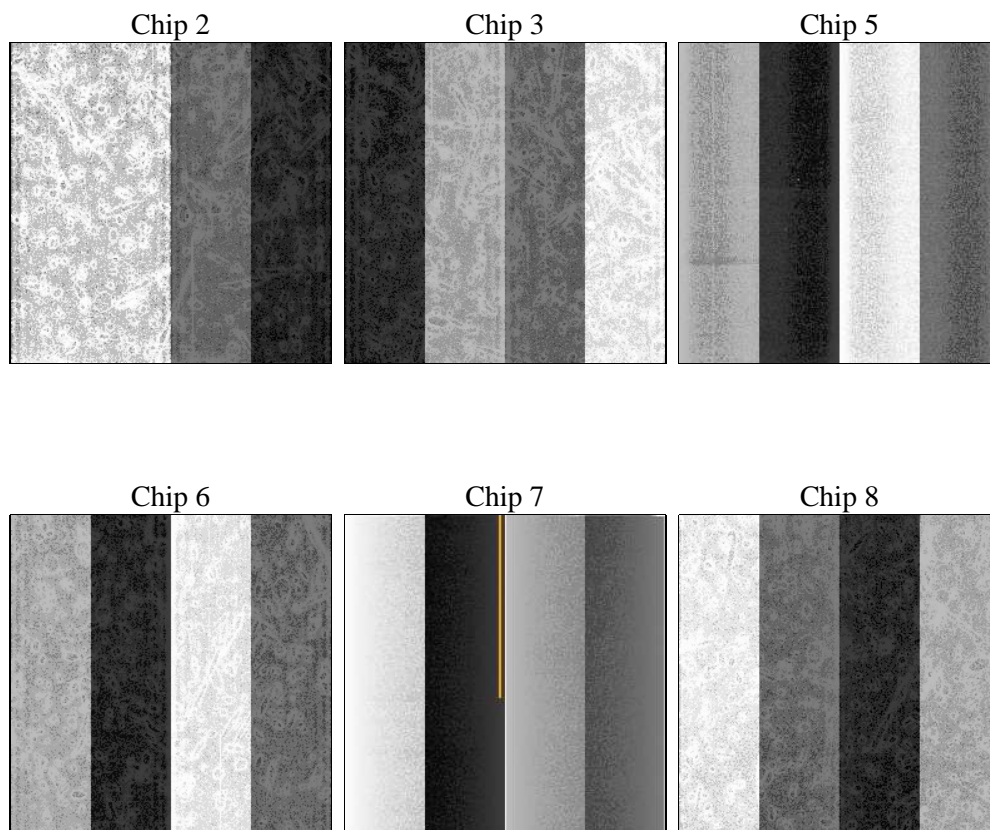
## 2 OBI

### 2.1 OBI

#### 2.1.1 Images



#### 2.1.2 Bias



### 2.1.3 Parameters

obi_num	0	Obi number	sched_exp_time	6000.000000	[s] Scheduled observation exposure time
ascdsver	8.4.5	Processing system revision	ontime	5964.636585325	Sum of GTIs [s]
caldsver	4.5.2	&#160	ontime2	5964.6776253283	Sum of GTIs [s]
date	2012-11-08T02:11:19	Date and time of file creation	ontime3	5964.5134653151	Sum of GTIs [s]
revision	3	Processing version of data	ontime5	5964.5955453217	Sum of GTIs [s]
			ontime6	5964.5545053184	Sum of GTIs [s]
			ontime7	5964.636585325	Sum of GTIs [s]
			ontime8	5964.4724253416	Sum of GTIs [s]
			l1events	236945	Number of level 1 events

### 2.1.4 Events

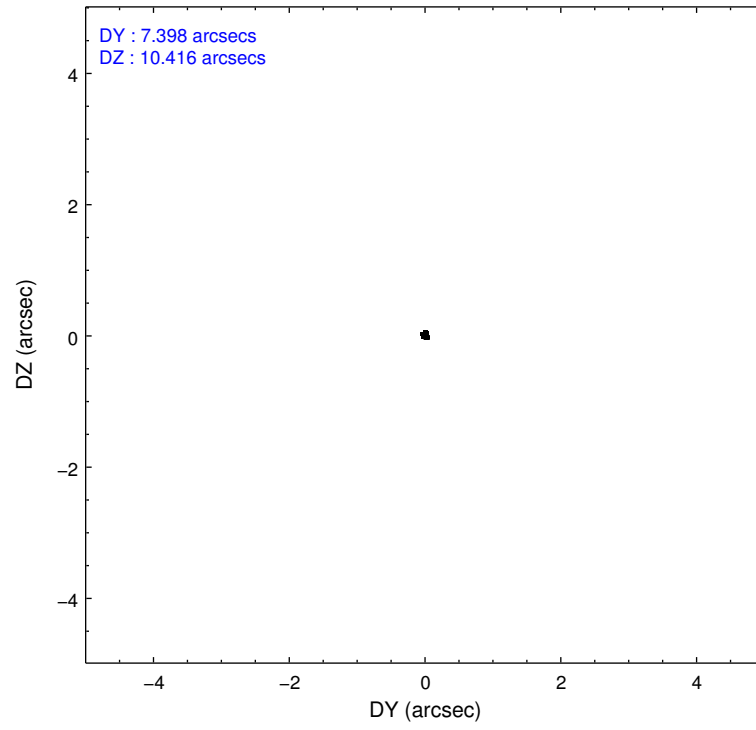
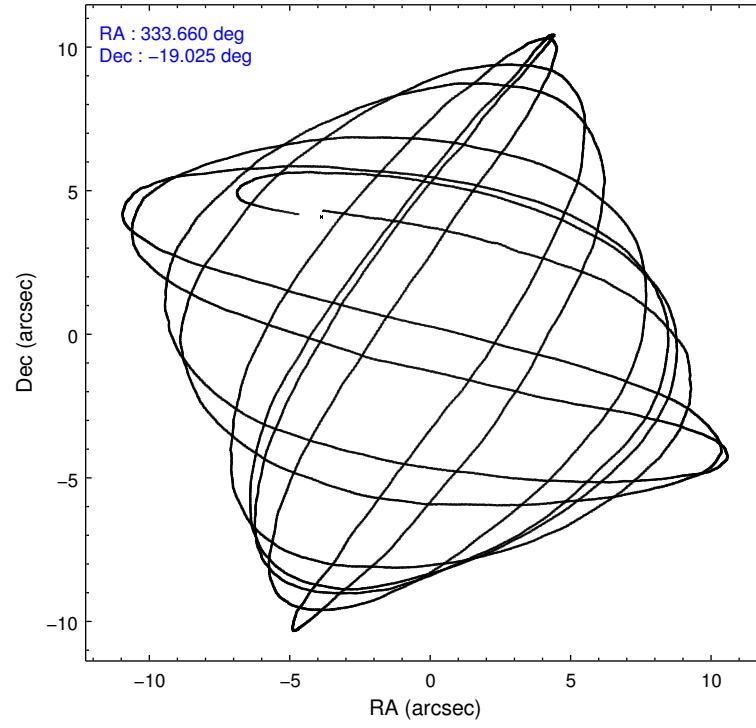
	ccd 2	ccd 3	ccd 5	ccd 6	ccd 7	ccd 8		ccd 2	ccd 3	ccd 5	ccd 6	ccd 7	ccd 8
level 1 events	31916	31943	50893	31613	45314	45266	grade 0 events	2410	2200	2677	2097	2018	4986
rejected events	26914	27062	26434	26575	25113	31864		7%	6%	5%	6%	4%	11%
rejected %	84%	84%	51%	84%	55%	70%	grade 1 events	18	22	113	11	32	36
								0%	0%	0%	0%	0%	0%
							grade 2 events	986	1070	7506	1232	4012	2490
								3%	3%	14%	3%	8%	5%
							grade 3 events	371	369	1075	368	1814	1664
								1%	1%	2%	1%	4%	3%
							grade 4 events	391	372	1051	397	1722	1557
								1%	1%	2%	1%	3%	3%
							grade 5 events	1217	1404	3520	1345	4190	1899
								3%	4%	6%	4%	9%	4%
							grade 6 events	852	877	12186	953	10670	2719
								2%	2%	23%	3%	23%	6%
							grade 7 events	25671	25629	22765	25210	20856	29915
								80%	80%	44%	79%	46%	66%

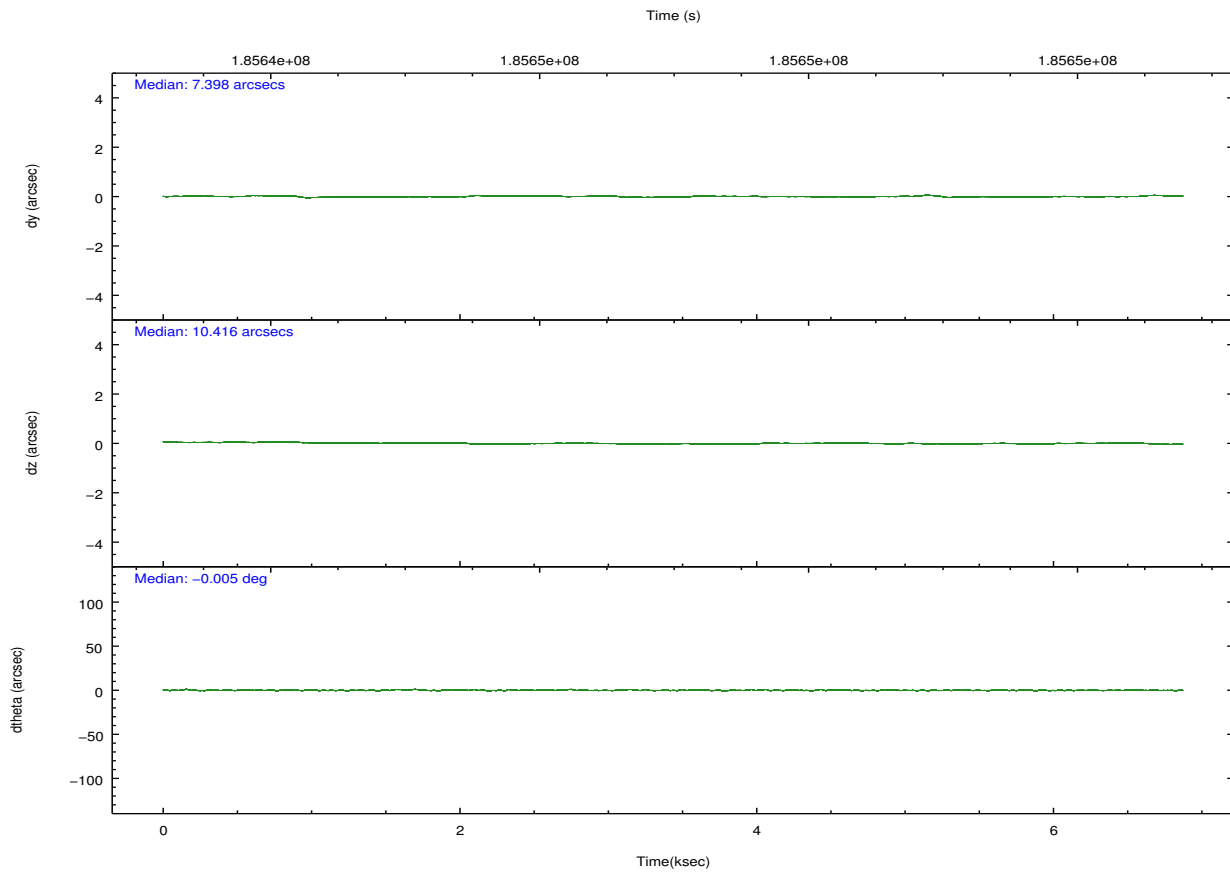
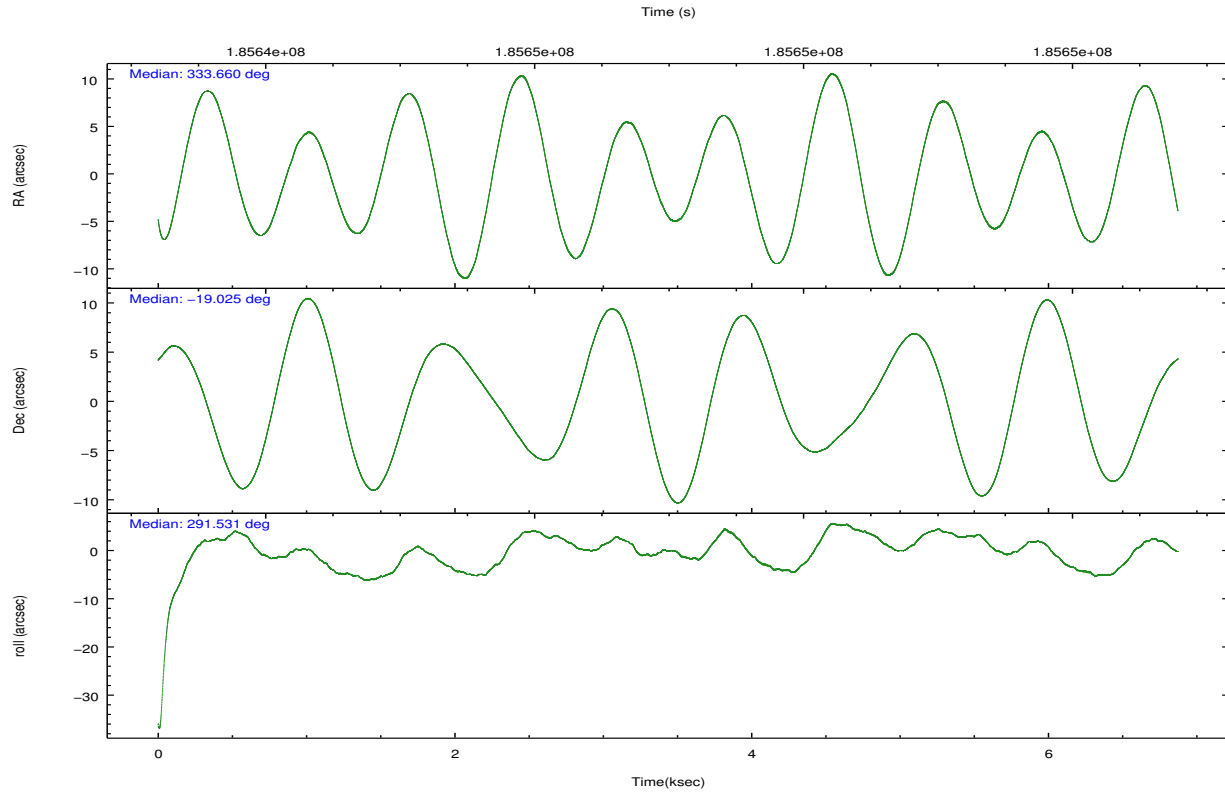


## 2.2 Compared Parameters

Parameter	Planned	Actual	Parameter	Planned	Actual
Instrument	ACIS	ACIS	Obspar format version number	7	7
Detector	ACIS-235678	ACIS-235678	Obspar file type	PREDICTED	ACTUAL
Grating	NONE	NONE	Obspar update status	NONE	UPDATED
Data mode	FAINT	FAINT	Number of optional ACIS chips dropped	0	0
Observation mode	POINTING	POINTING	On-chip summing requested	N	N
[deg] Pointing RA	333.637152	333.6600328303506	Subarray requested	NONE	NONE
[deg] Pointing Dec	-19.008884	-19.02555682983025	Alternating exposures requested	N	N
[deg] Pointing Roll	291.364498	291.5285272894297	[s] Primary exposure time	0.000000	3.2
[mm] SIM focus pos	-0.684267	-0.6828225247311905			
[mm] SIM defocus	0	0.001444936568705701			
[mm] SIM translation stage pos	-190.132523	-190.1400660498719			
[mm] SIM translation stage offset	0	0.00754346686406393			
[s] Observation start time (MET)	185644424.184000	185643117.22662			
Observation start date	2003-11-19T15:52:40	2003-11-19T15:31:57			
[s] Observation end time (MET)	185650424.184000	185650728.87695			
Observation end date	2003-11-19T17:32:40	2003-11-19T17:38:48			
Read mode	TIMED	TIMED			

## 2.3 Aspect



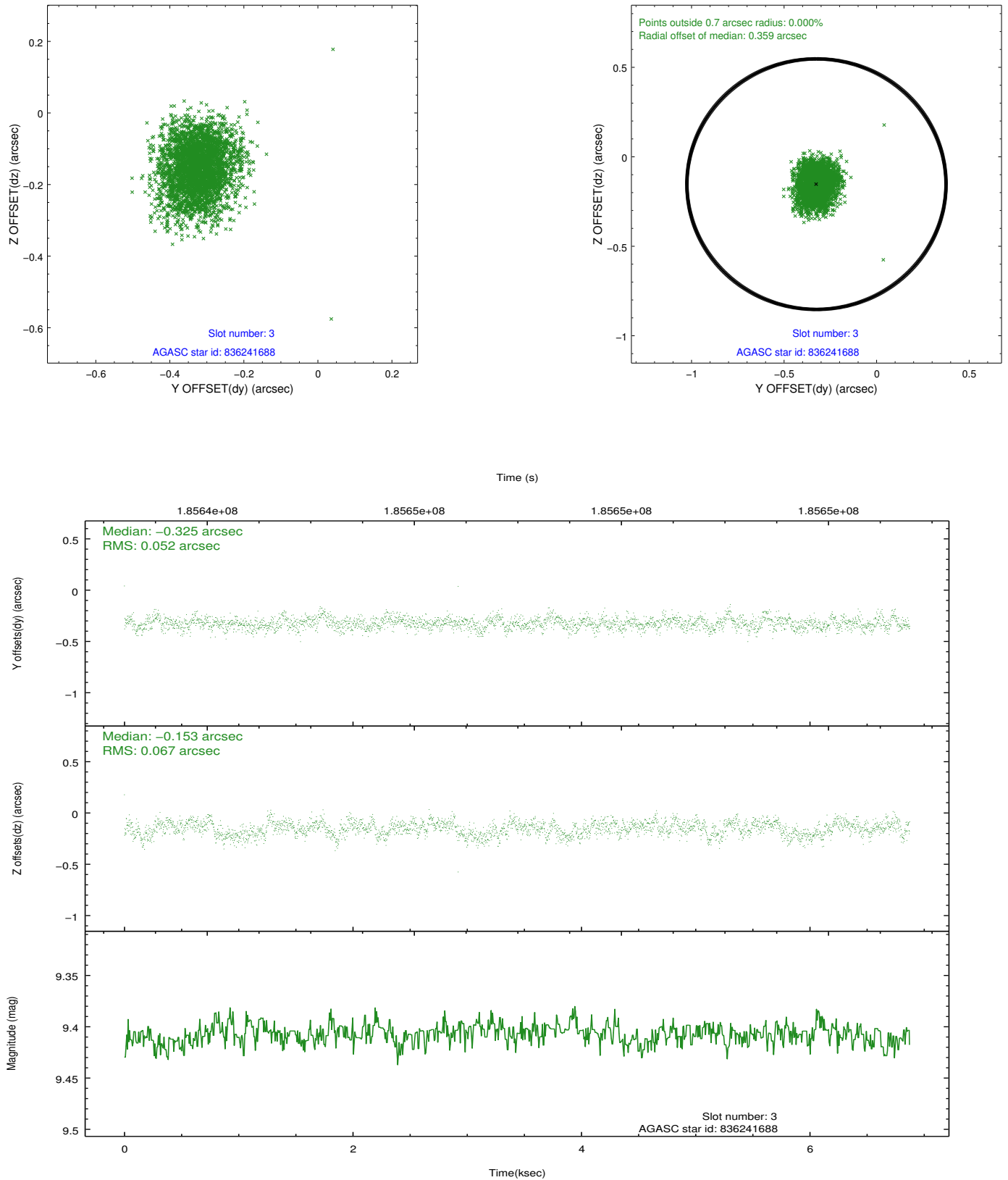


### Slot Statistics

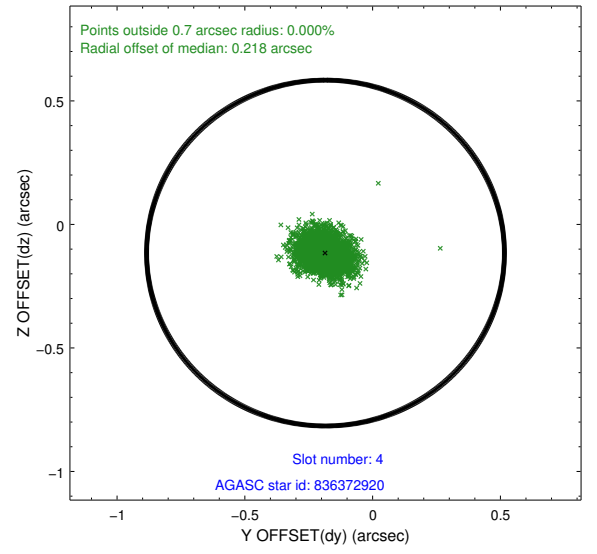
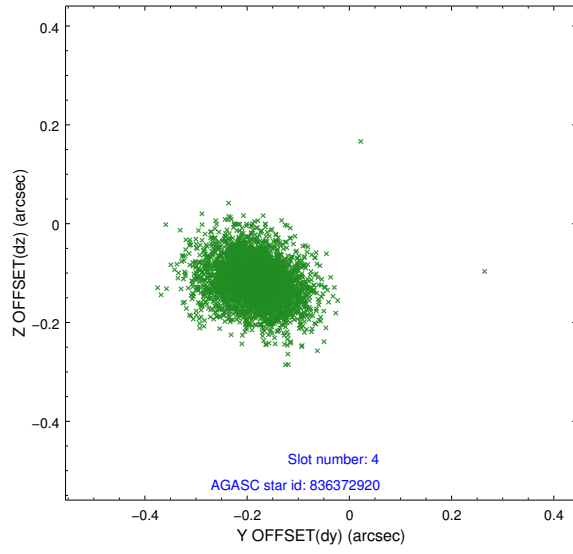
slot	status	id	mag	n_pts	med_dy	med_dz	dr1	dr2	ra	dec	mean_y	mean_z
0	FID	ACIS-S-2	7.10	1677	-0.043	-0.009	0.006	0.010	0.000000	0.000000	-760.17	-1731.70
1	FID	ACIS-S-4	7.20	1676	0.069	0.023	0.005	0.009	0.000000	0.000000	2152.80	176.00
2	FID	ACIS-S-5	7.23	1677	-0.058	-0.005	0.006	0.011	0.000000	0.000000	-1811.98	170.52
3	GUIDE	836241688	9.41	3352	-0.325	-0.153	0.091	0.145	332.859450	-18.668159	-2103.51	-2025.77
4	GUIDE	836372920	9.19	3354	-0.184	-0.116	0.072	0.121	333.426953	-18.454923	-2119.00	57.04
5	GUIDE	836377760	9.88	3352	0.264	0.215	0.126	0.199	334.344634	-19.399355	2188.66	1723.57
6	GUIDE	836381040	7.29	3354	-0.000	-0.073	0.058	0.096	333.585370	-19.248941	741.70	-478.53
7	GUIDE	836373360	9.84	3351	0.249	0.122	0.127	0.216	334.089326	-19.531475	2313.44	742.37

## 2.4 Star Slots

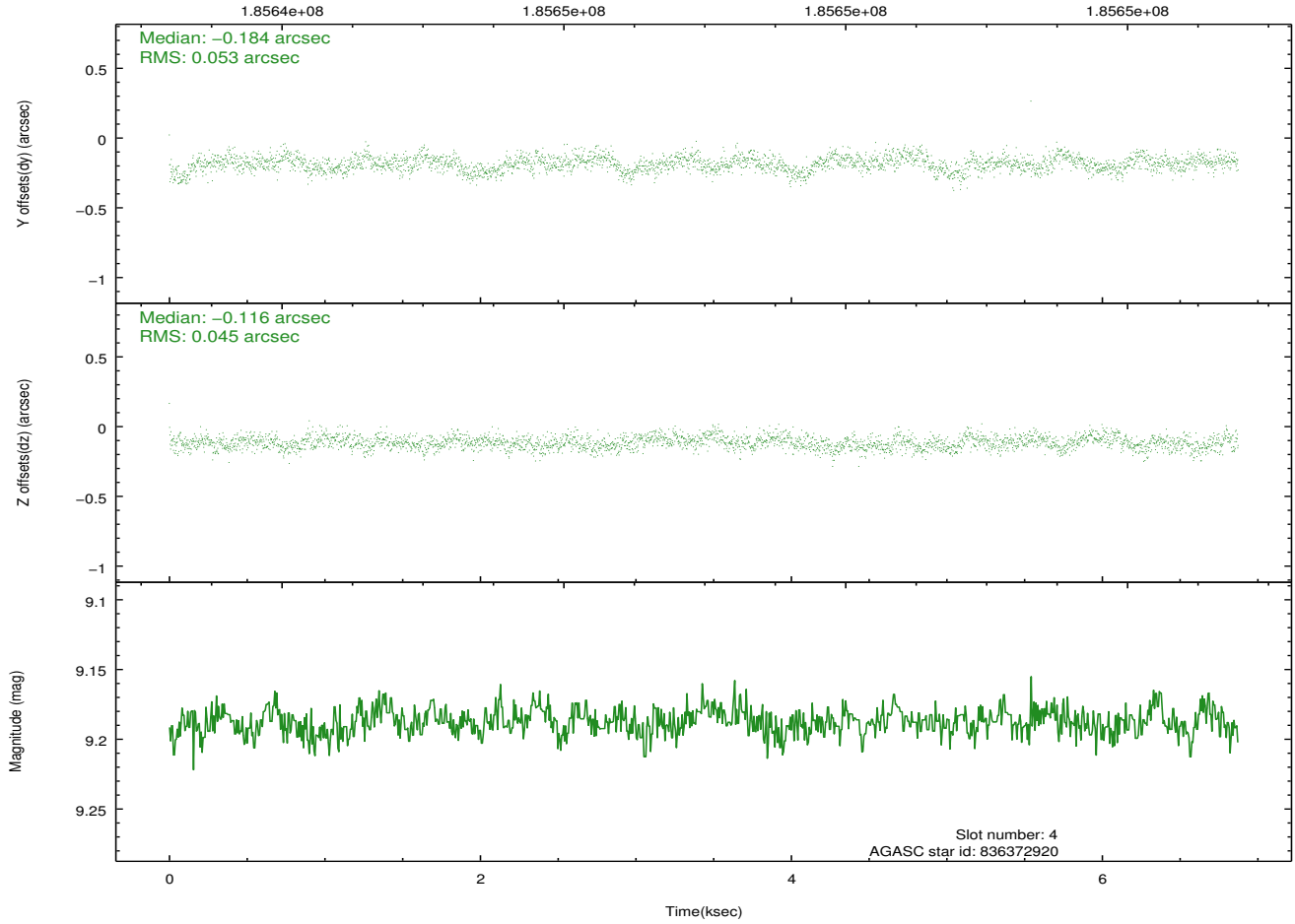
### 2.4.1 Slot 3



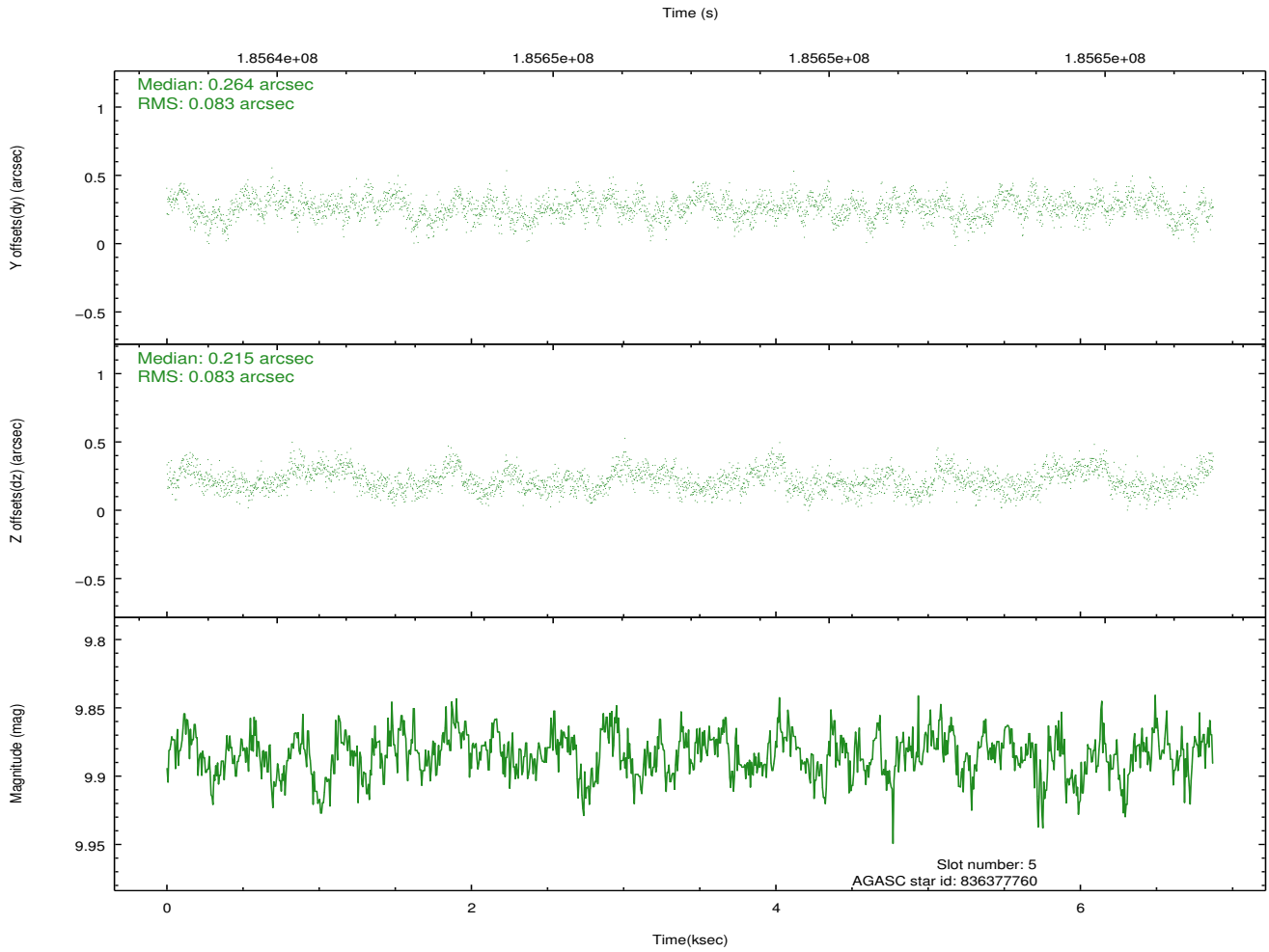
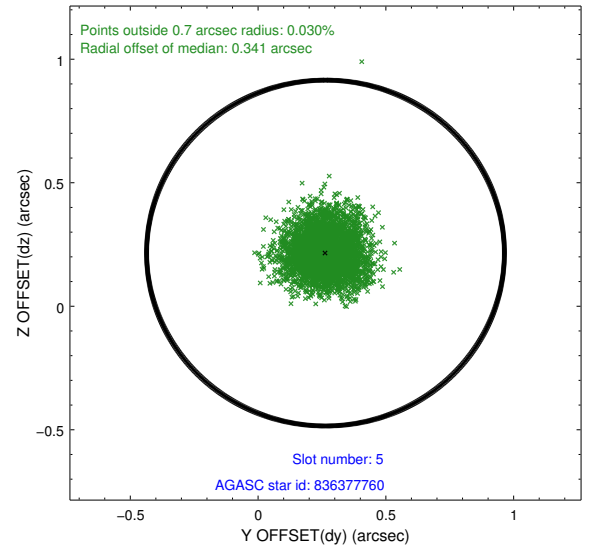
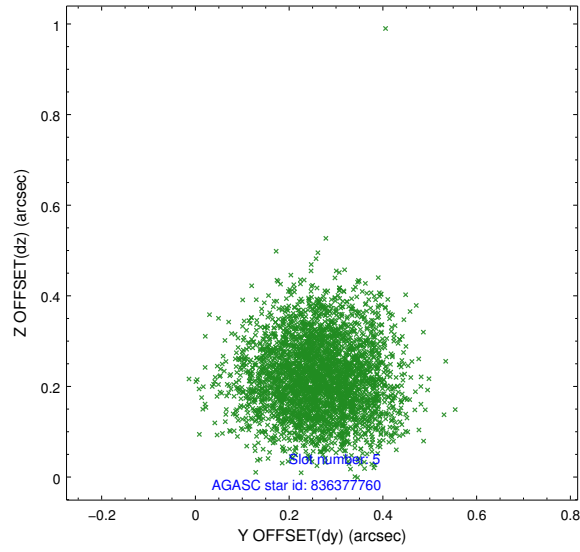
## 2.4.2 Slot 4



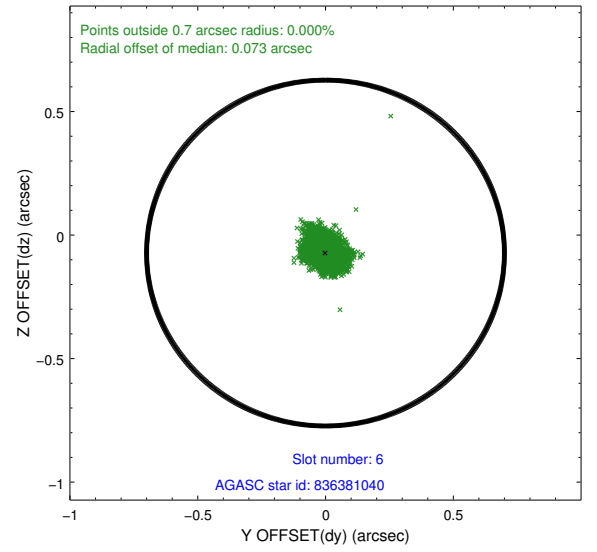
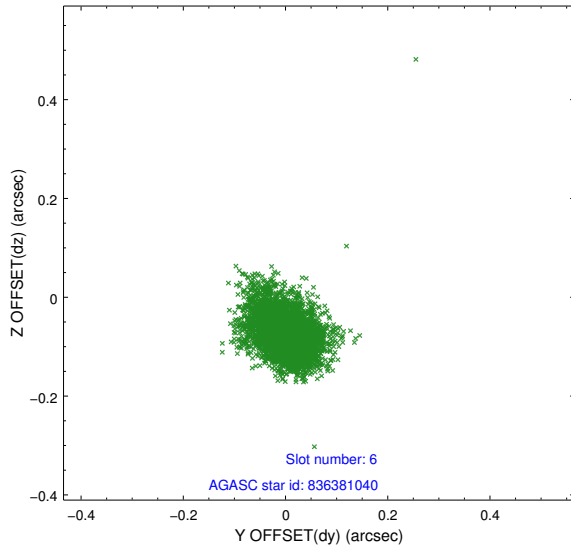
Time (s)



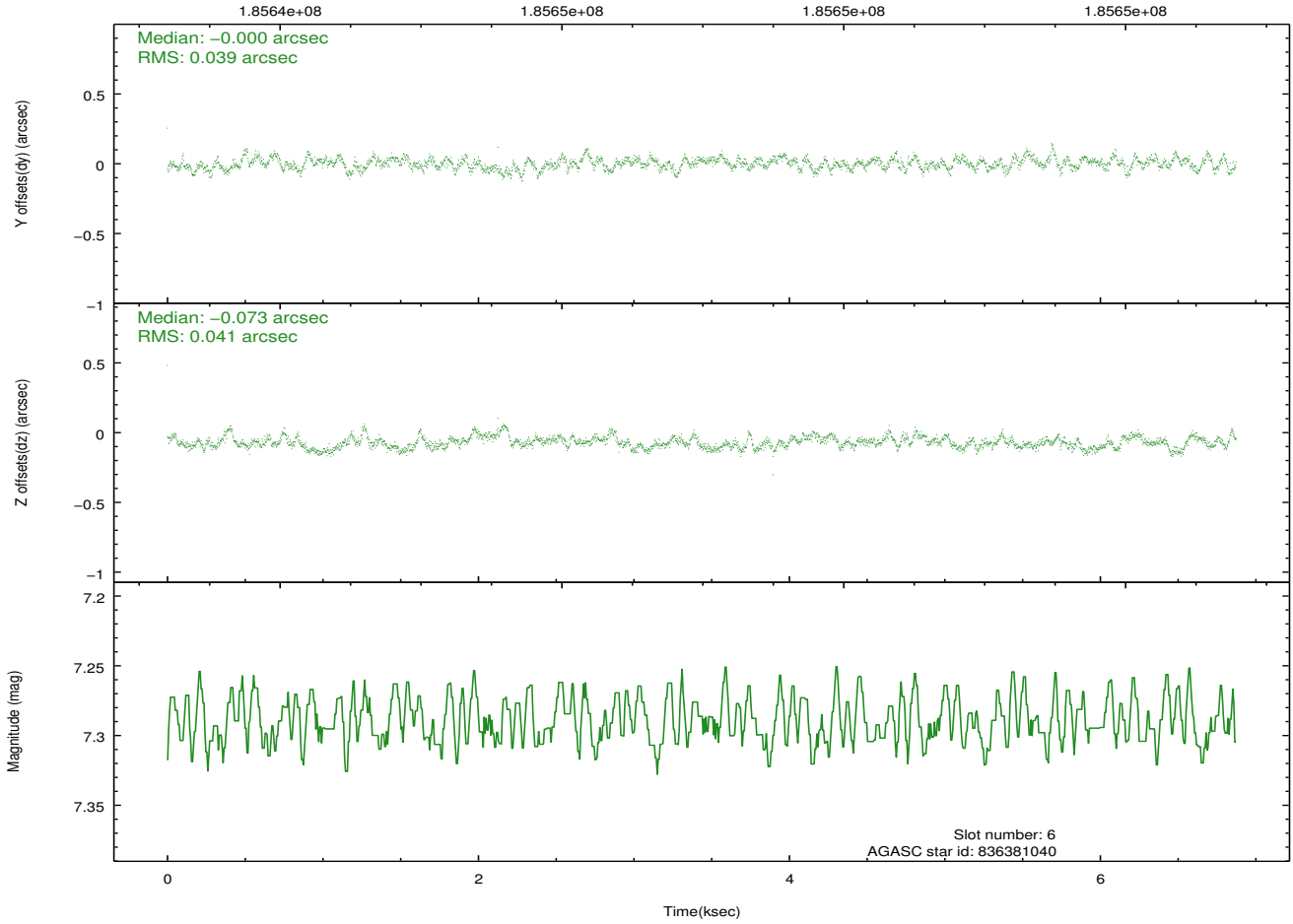
### 2.4.3 Slot 5



## 2.4.4 Slot 6

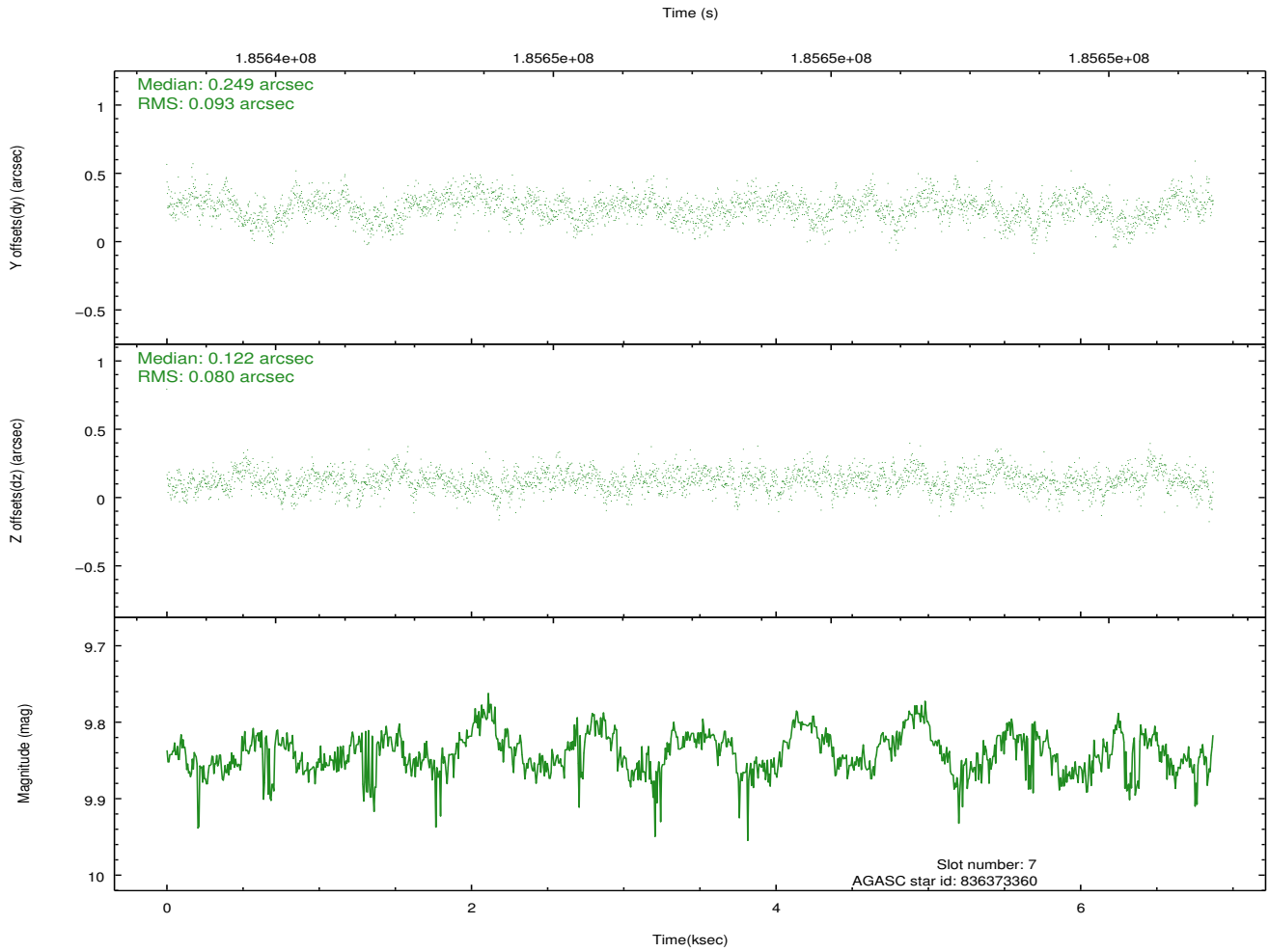
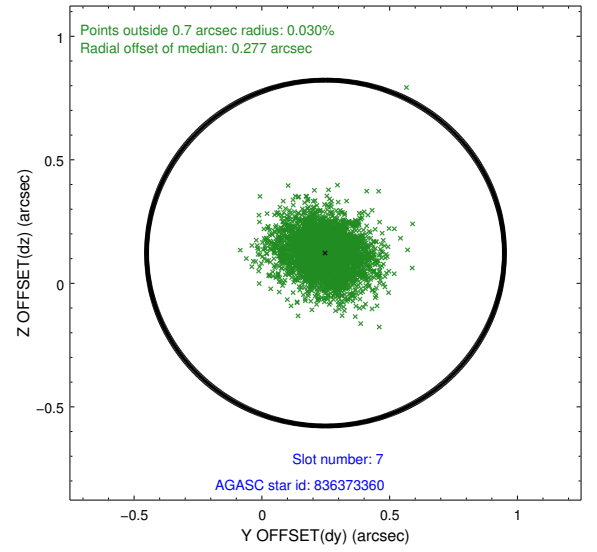
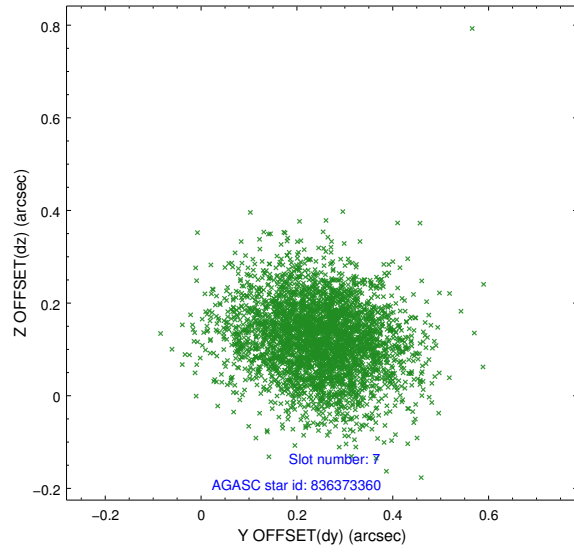


Time (s)



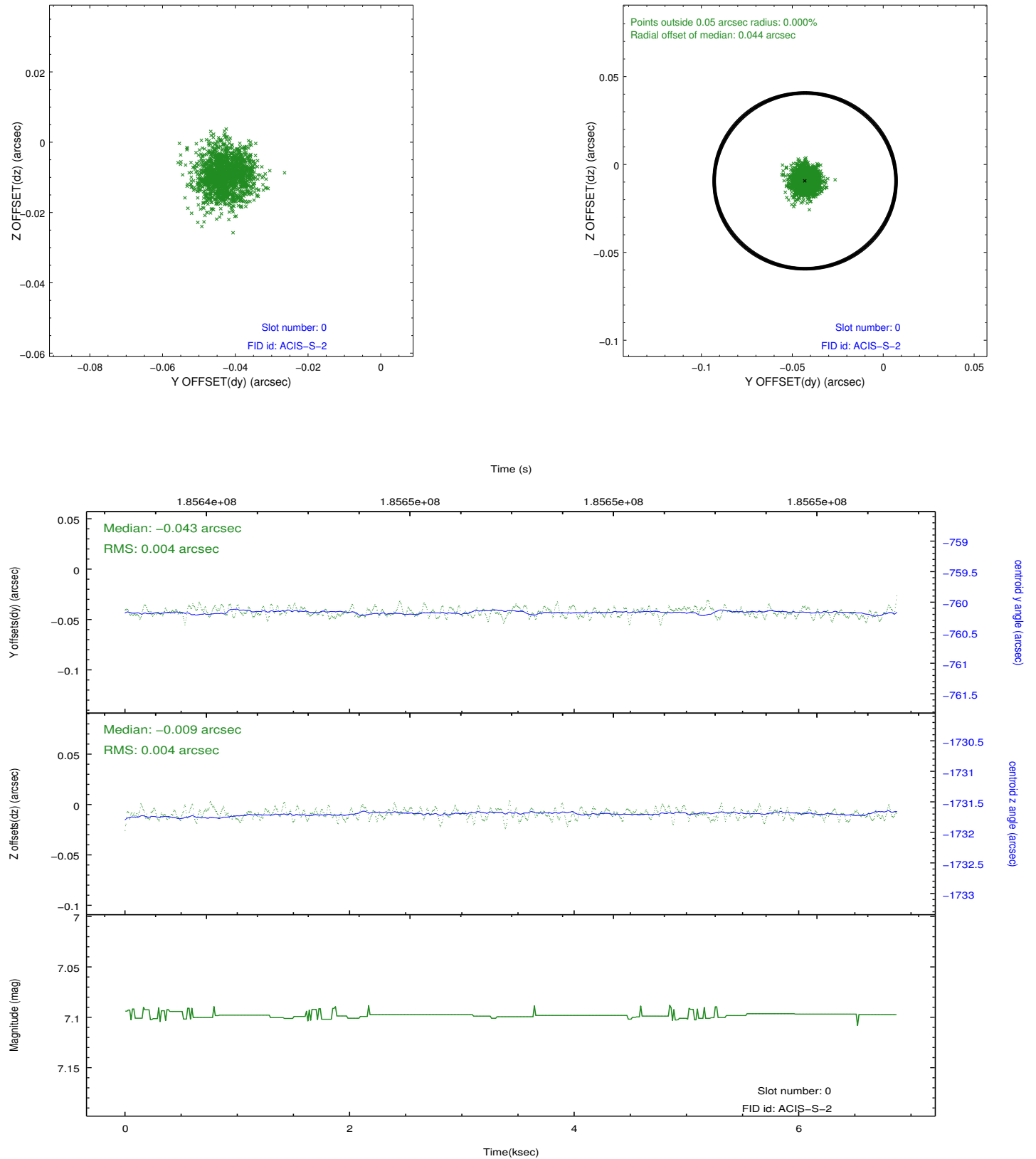


## 2.4.5 Slot 7

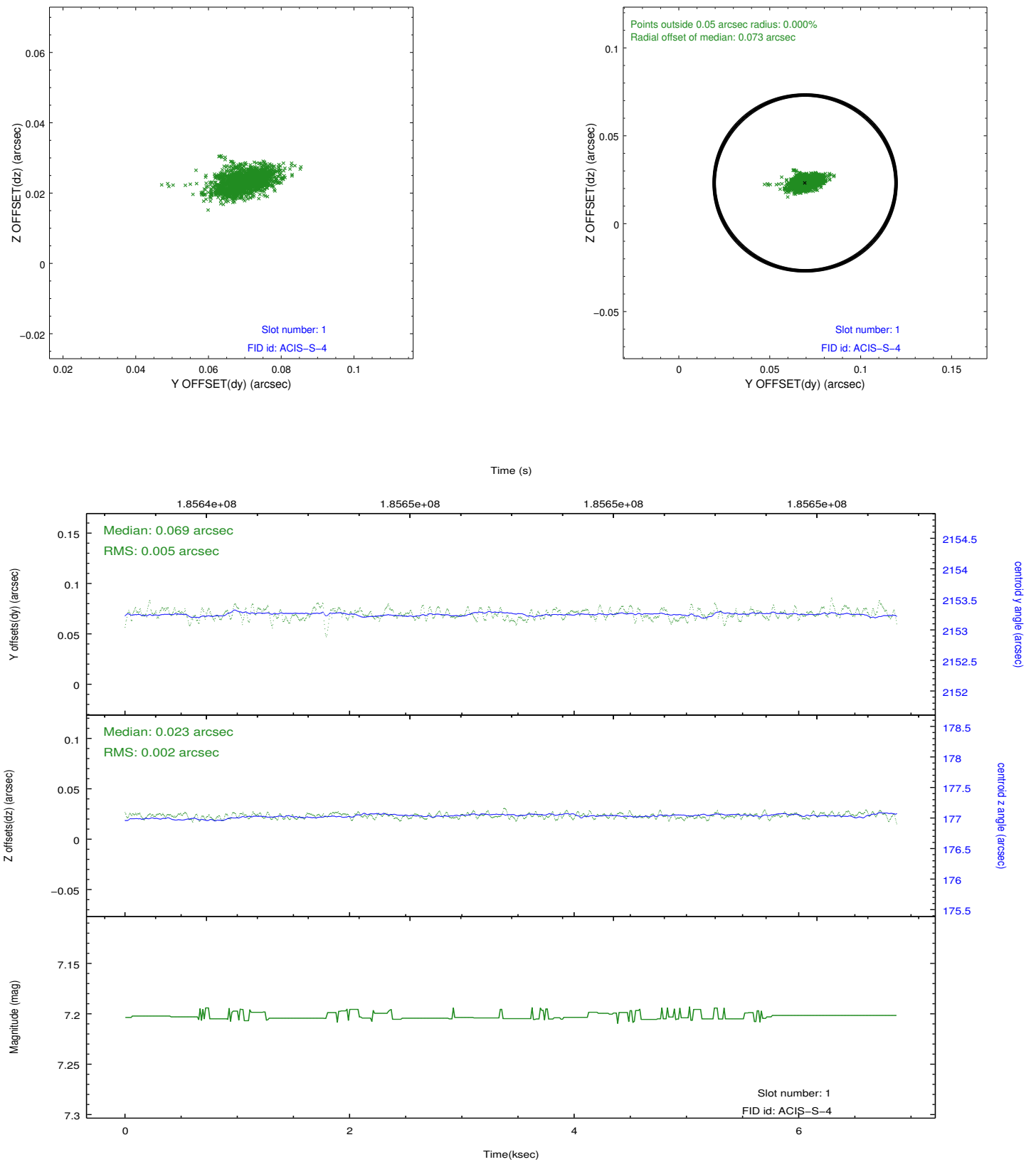


## 2.5 FID Slots

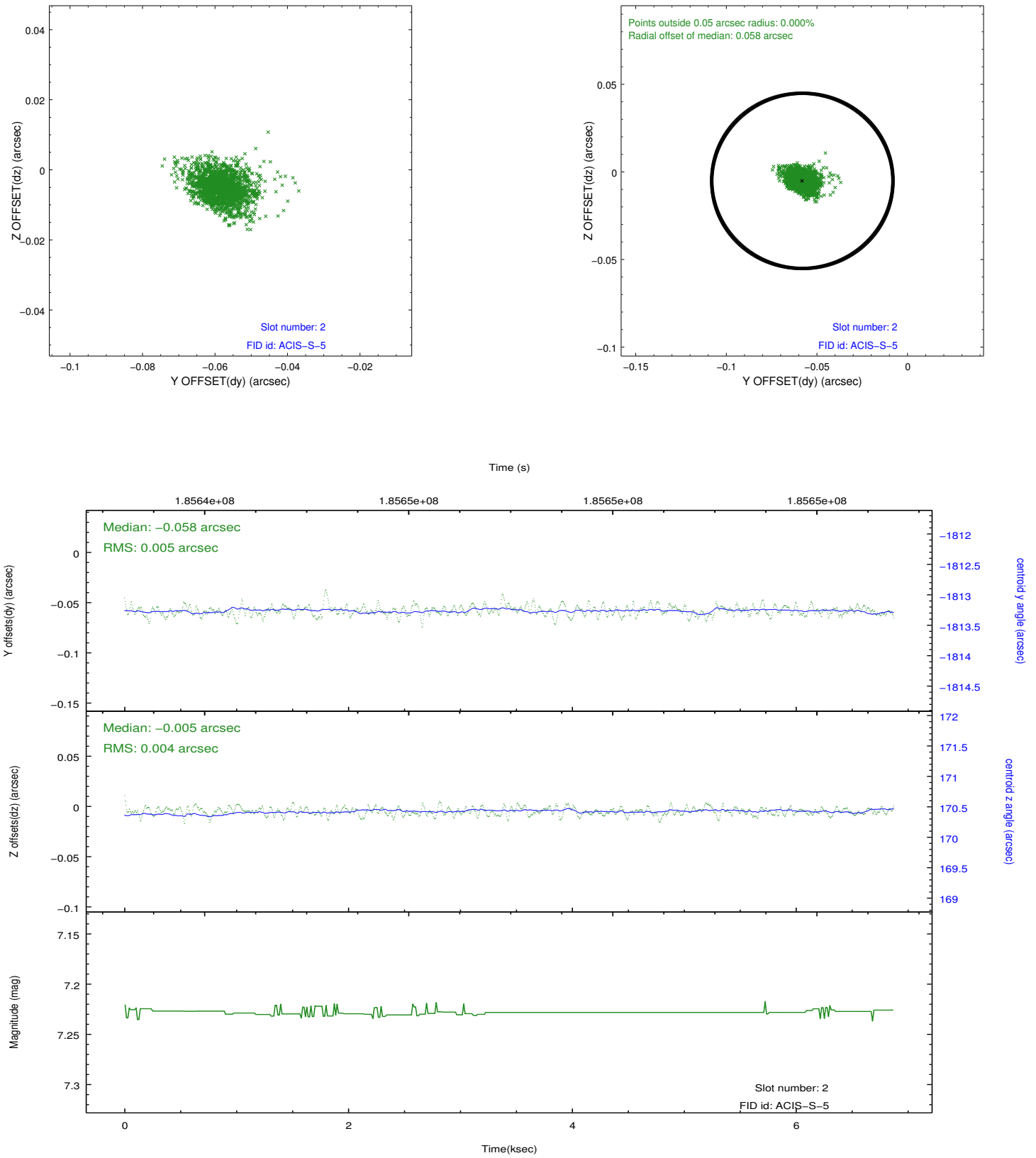
### 2.5.1 Slot 0



## 2.5.2 Slot 1



### 2.5.3 Slot 2



## A Summary

### A.1 Status

V&V Scientist	Jen Lauer
V&V Date (YYYY-MM-DD)	2012.12.02
V&V Edition	1
V&V Disposition and Status	OK
V&V Charge Time	5.964

### A.2 Comments