

# V&V Reference Report

## L2 ASCDS Version : 8.4.5

Observation 4776 - L2 Version 4  
Chandra X-Ray Center

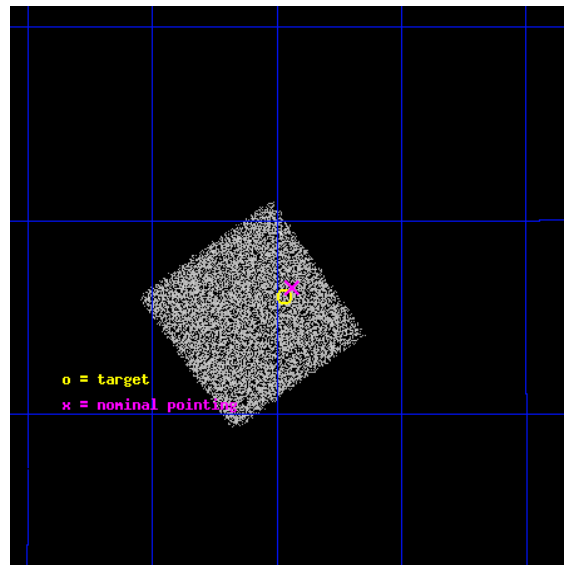
L2 Processing Date : Nov 13 2012

## Contents

<b>1</b>	<b>Front</b>	<b>2</b>
<b>2</b>	<b>OBI</b>	<b>3</b>
2.1	OBI . . . . .	3
2.1.1	Images . . . . .	3
2.1.2	Bias . . . . .	3
2.1.3	Parameters . . . . .	4
2.1.4	Events . . . . .	4
2.2	Compared Parameters . . . . .	5
2.3	Aspect . . . . .	6
2.4	Star Slots . . . . .	9
2.4.1	Slot 3 . . . . .	9
2.4.2	Slot 4 . . . . .	10
2.4.3	Slot 5 . . . . .	11
2.4.4	Slot 6 . . . . .	12
2.4.5	Slot 7 . . . . .	13
2.5	FID Slots . . . . .	14
2.5.1	Slot 0 . . . . .	14
2.5.2	Slot 1 . . . . .	15
2.5.3	Slot 2 . . . . .	16
<b>A</b>	<b>Summary</b>	<b>17</b>
A.1	Status . . . . .	17
A.2	Comments . . . . .	17

# 1 Front

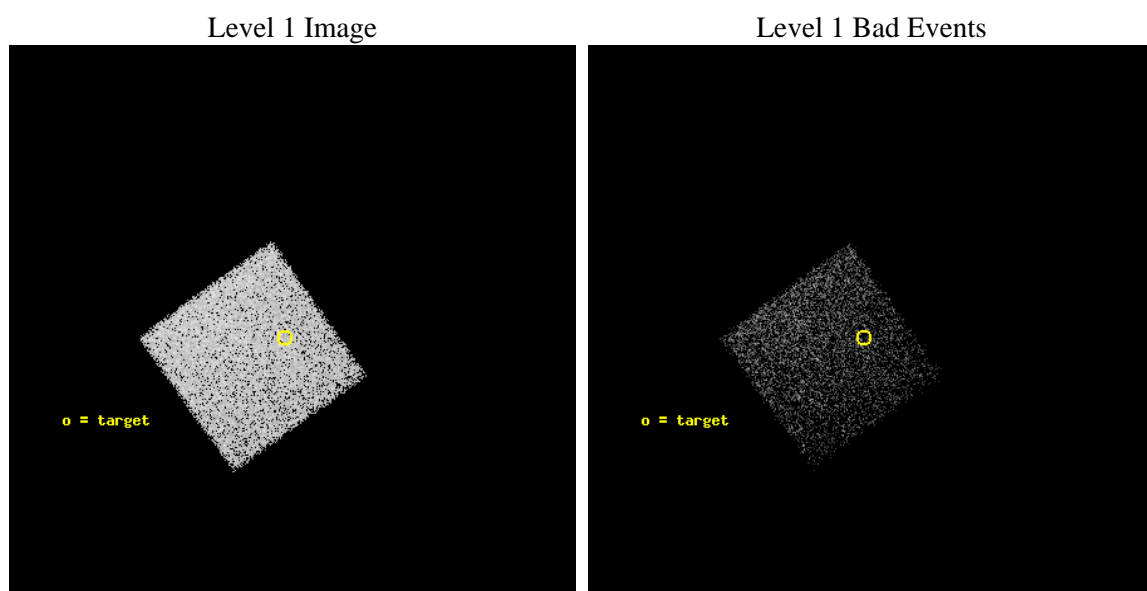
seq_num	700859	Sequence number
obs_id	4776	Observation id
title	Anchoring the AGN X-ray Luminosity Function	Proposal title
observer	Dr. JOHN SALZER	Principal investigator
object	F1320-4207	Source name
dtcycle	0	&#160
cycle	P	events from which exps? Prim/Second/Both
ra_targ	200.118	Observer's specified target RA [deg]
dec_targ	29.602	Observer's specified target Dec [deg]
ra_nom	200.11016130268	Nominal RA [deg]
dec_nom	29.608909059552	Nominal Dec [deg]
roll_nom	144.56050887723	Nominal Roll [deg]
revision	4	Processing version of data
ontime	4642.6726008952	Sum of GTIs [s]
livetime	4580.0179552671	Livetime [s]
ontime7	4642.6726008952	Sum of GTIs [s]
l2events	16837	Number of level 2 events



## 2 OBI

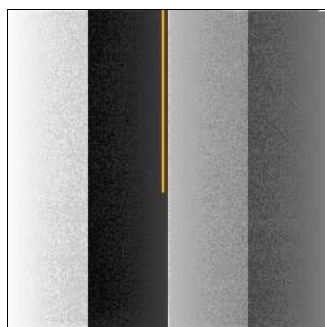
### 2.1 OBI

#### 2.1.1 Images



#### 2.1.2 Bias

Chip 7



### 2.1.3 Parameters

obi_num	0	Obi number	sched_exp_time	4000.000000	[s] Scheduled observation exposure time
ascdsver	8.4.5	Processing system revision	ontime	4642.6726008952	Sum of GTIs [s]
caldsver	4.5.2	&#160	ontime7	4642.6726008952	Sum of GTIs [s]
date	2012-11-14T00:10:59	Date and time of file creation	l1events	41655	Number of level 1 events
revision	4	Processing version of data			

### 2.1.4 Events

	<b>ccd 7</b>
level 1 events	41655
rejected events	24376
rejected %	58%

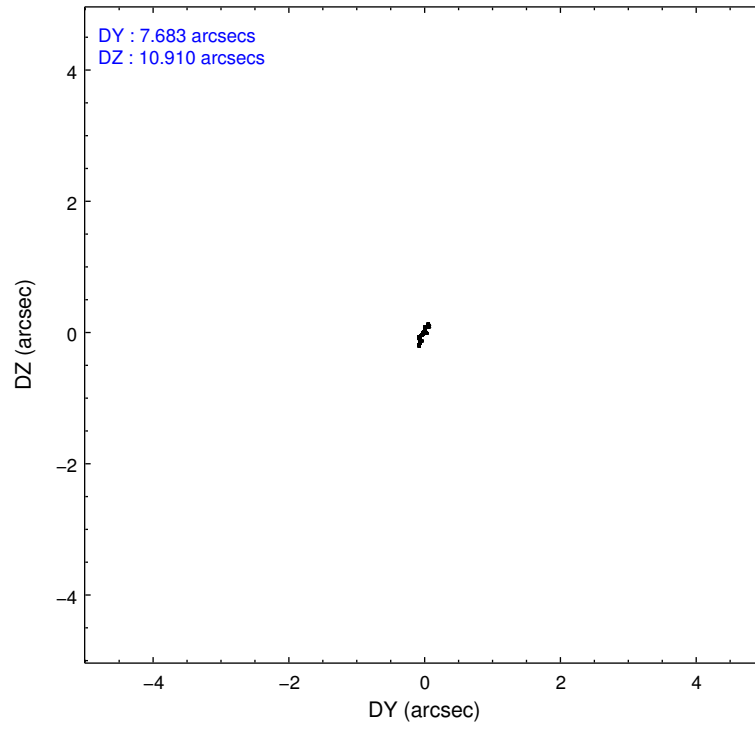
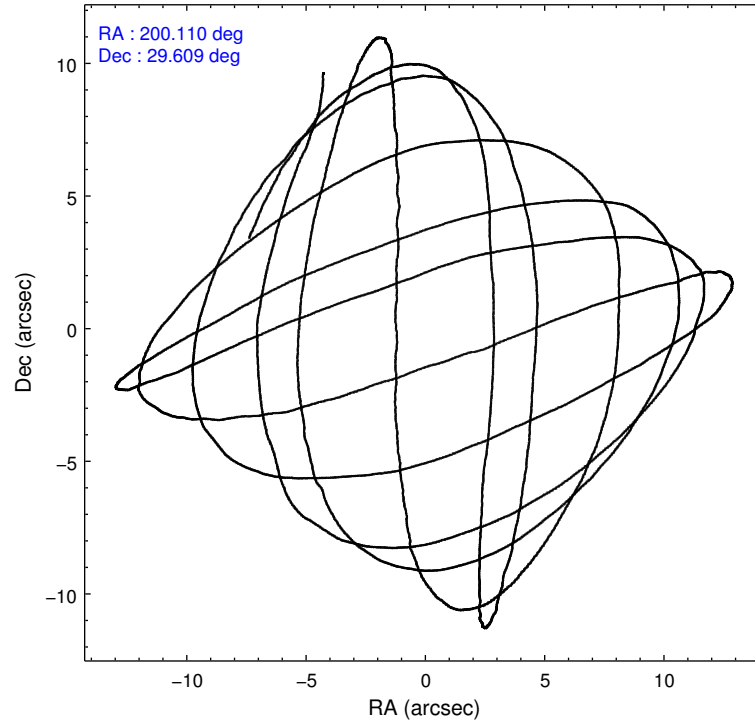
	<b>ccd 7</b>
grade 0 events	1540
	3%
grade 1 events	34
	0%
grade 2 events	3411
	8%
grade 3 events	1527
	3%
grade 4 events	1553
	3%
grade 5 events	3989
	9%
grade 6 events	9255
	22%
grade 7 events	20346
	48%

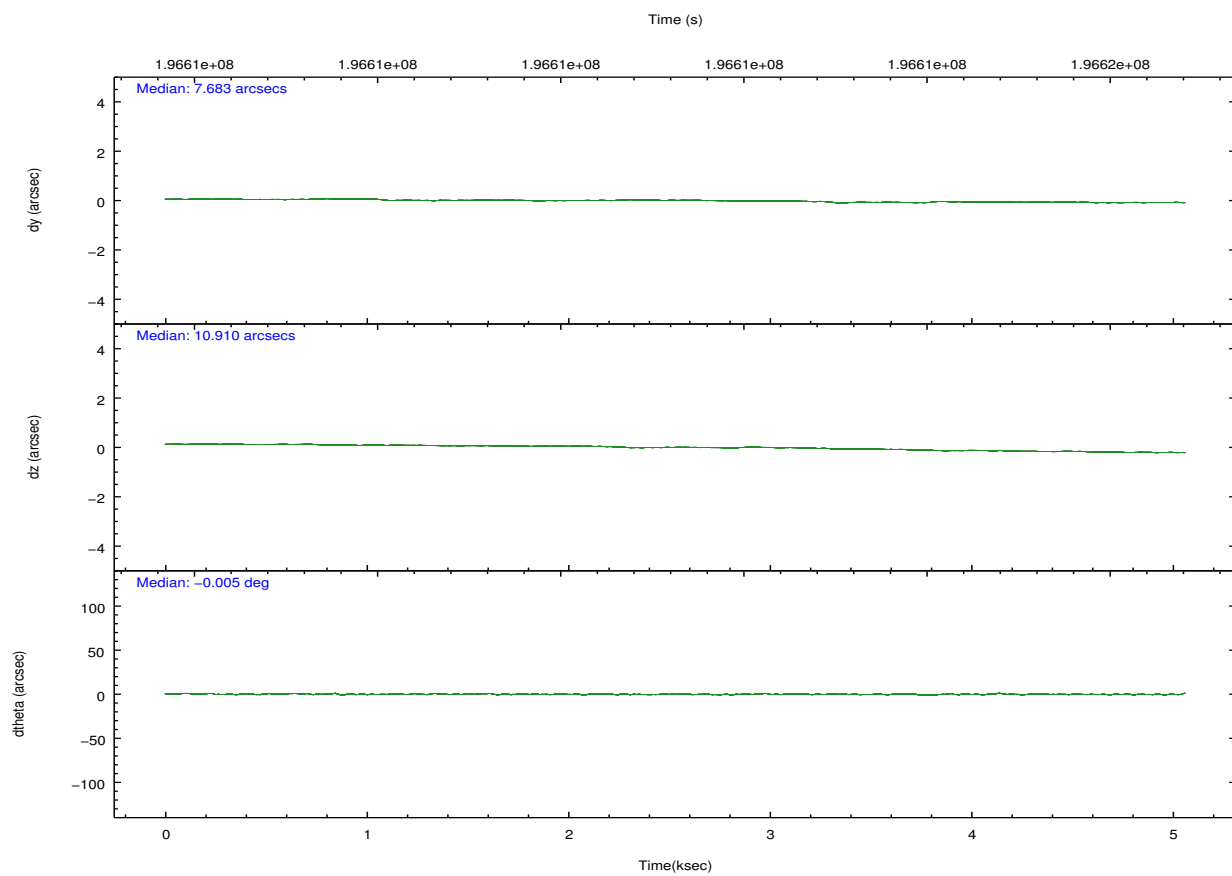
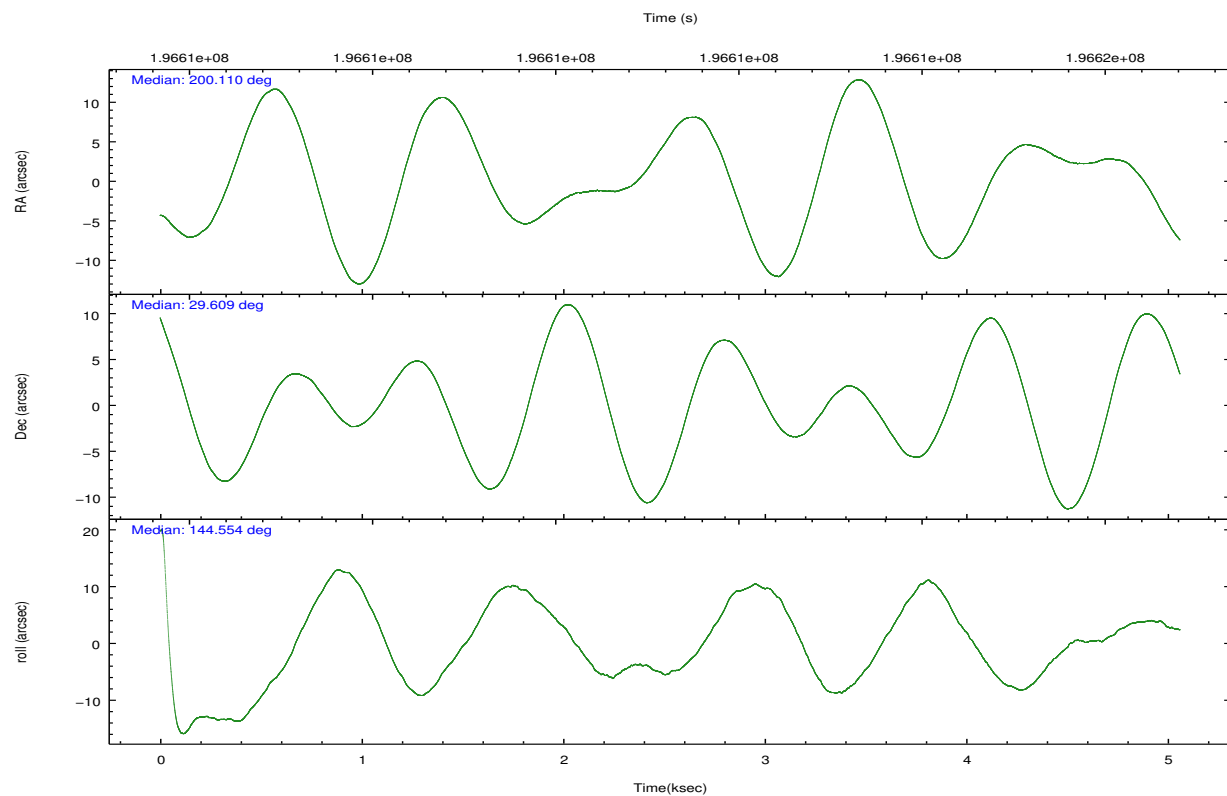


## 2.2 Compared Parameters

Parameter	Planned	Actual	Parameter	Planned	Actual
Instrument	ACIS	ACIS	Obspar format version number	7	7
Detector	ACIS-7	ACIS-7	Obspar file type	PREDICTED	ACTUAL
Grating	NONE	NONE	Obspar update status	NONE	UPDATED
Data mode	FAINT	FAINT	Number of optional ACIS chips dropped	0	0
Observation mode	POINTING	POINTING	On-chip summing requested	N	N
[deg] Pointing RA	200.141426	200.1101613026819	Subarray requested	NONE	NONE
[deg] Pointing Dec	29.606680	29.60890905955186	Alternating exposures requested	N	N
[deg] Pointing Roll	144.388427	144.5605088772323	[s] Primary exposure time	0.000000	3
[mm] SIM focus pos	-0.684267	-0.6828225247311905			
[mm] SIM defocus	0	0.001444936568705701			
[mm] SIM translation stage pos	-190.132523	-190.1425803651734			
[mm] SIM translation stage offset	0	0.01005778216563158			
[s] Observation start time (MET)	196611154.184000	196609754.655			
Observation start date	2004-03-25T14:11:30	2004-03-25T13:49:14			
[s] Observation end time (MET)	196615154.184000	196616279.29278			
Observation end date	2004-03-25T15:18:10	2004-03-25T15:37:59			
Read mode	TIMED	TIMED			

## 2.3 Aspect



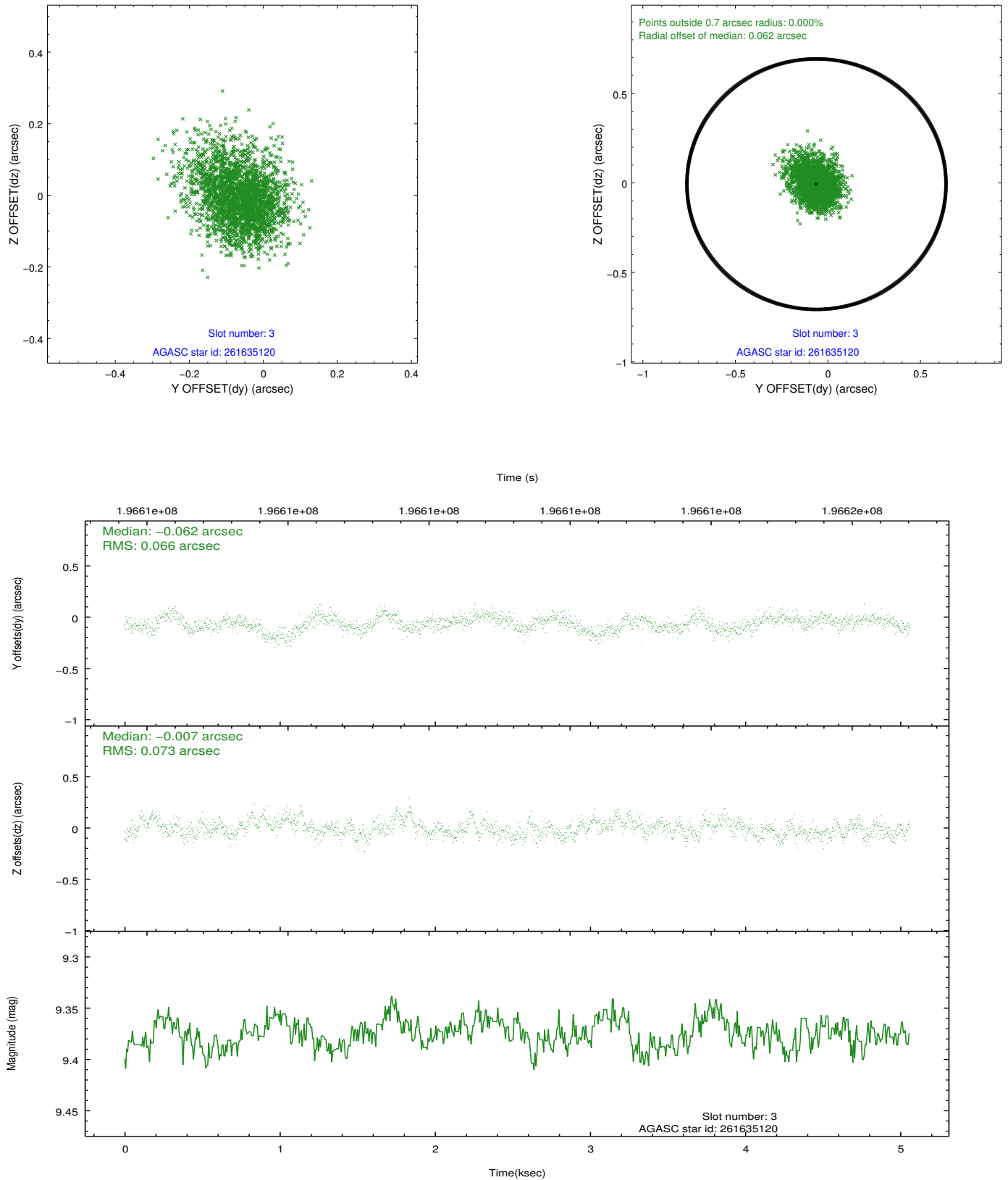


### Slot Statistics

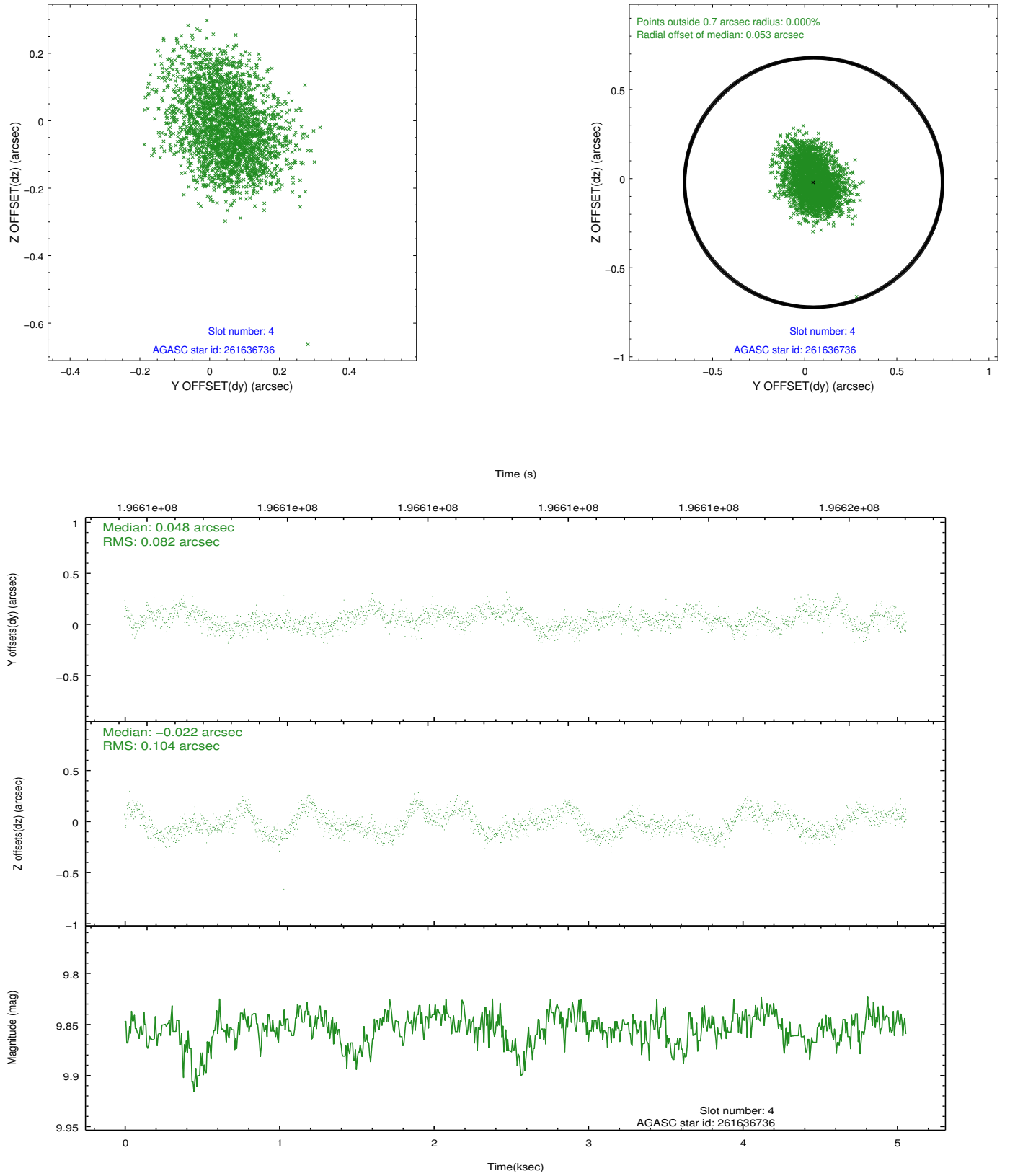
slot	status	id	mag	n_pts	med_dy	med_dz	dr1	dr2	ra	dec	mean_y	mean_z
0	FID	ACIS-S-2	7.10	1235	-0.035	-0.009	0.007	0.011	0.000000	0.000000	-760.44	-1732.14
1	FID	ACIS-S-4	7.20	1235	0.075	0.019	0.005	0.009	0.000000	0.000000	2152.36	175.18
2	FID	ACIS-S-5	7.23	1234	-0.071	-0.002	0.006	0.010	0.000000	0.000000	-1811.81	170.13
3	GUIDE	261635120	9.37	2470	-0.062	-0.007	0.104	0.172	200.629723	29.931982	-554.53	-1841.32
4	GUIDE	261636736	9.85	2467	0.048	-0.022	0.144	0.227	200.597637	29.120397	-2184.14	584.99
5	GUIDE	261637664	10.47	2466	0.044	-0.167	0.264	0.434	200.331702	28.823138	-2131.30	1943.72
6	GUIDE	262538384	10.07	2468	-0.155	0.132	0.169	0.257	201.107455	29.696999	-2260.08	-2032.52
7	GUIDE	332267712	10.19	2466	0.133	0.067	0.155	0.261	199.837749	30.390593	2410.22	-1746.26

## 2.4 Star Slots

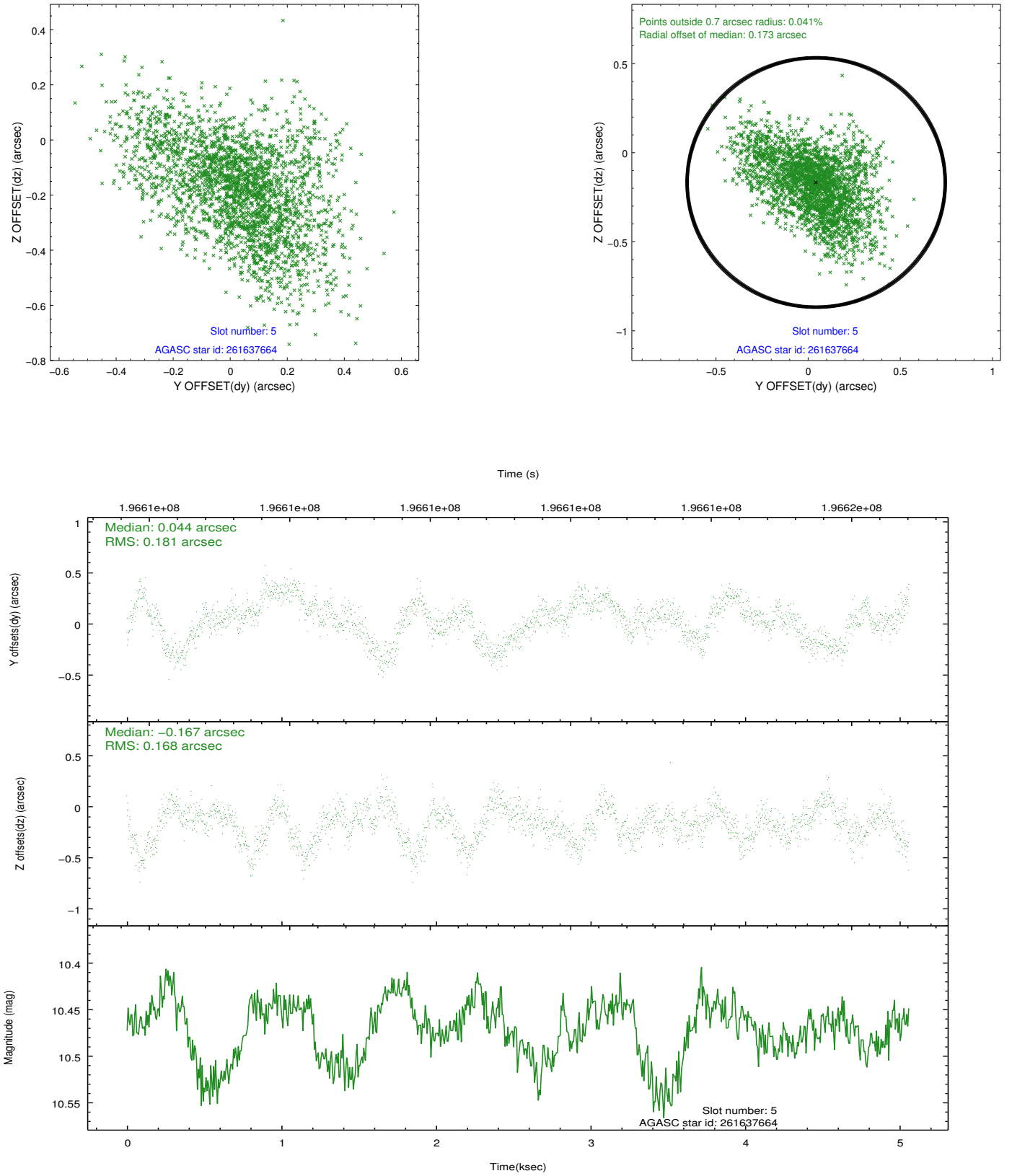
### 2.4.1 Slot 3



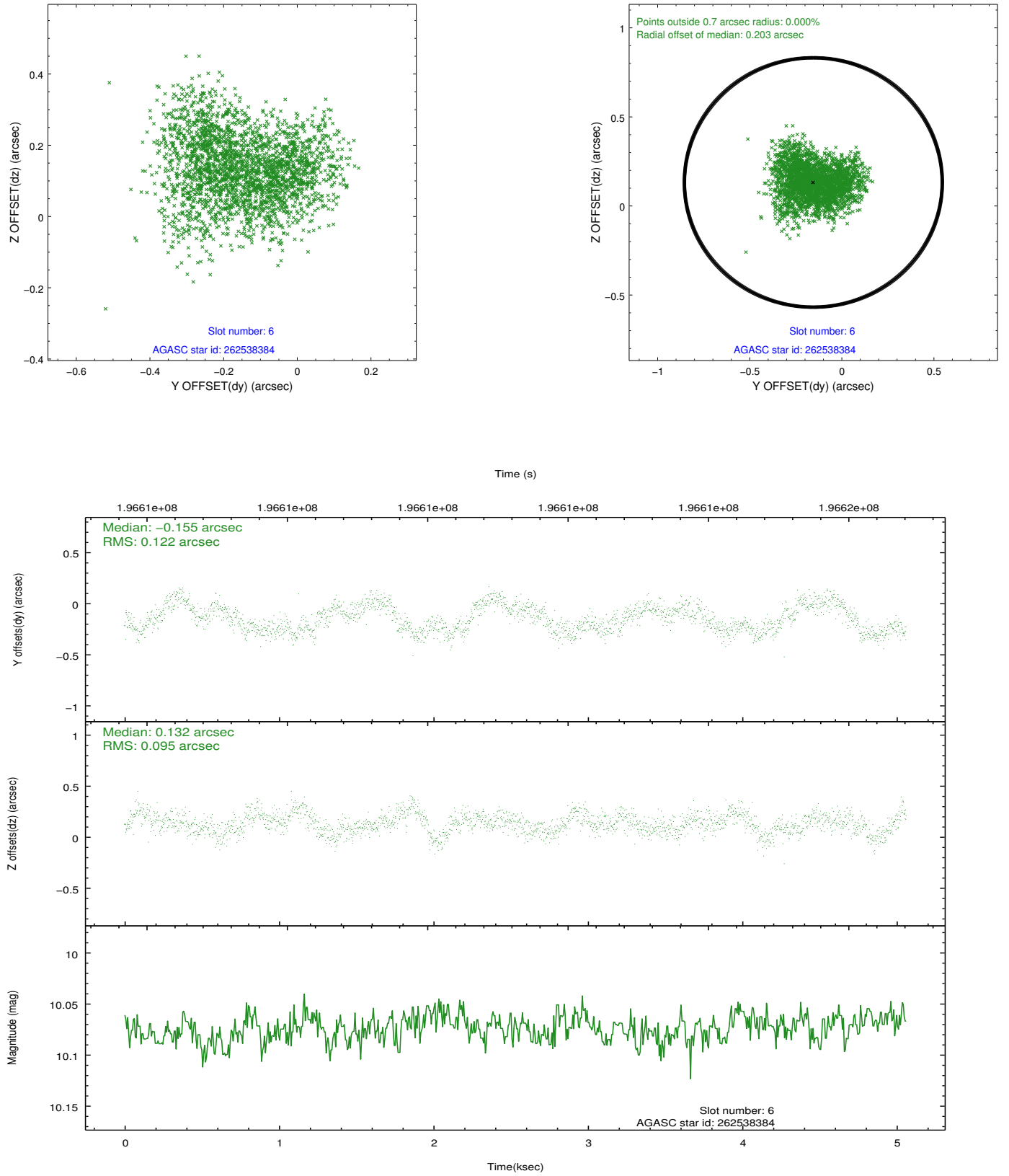
## 2.4.2 Slot 4



### 2.4.3 Slot 5

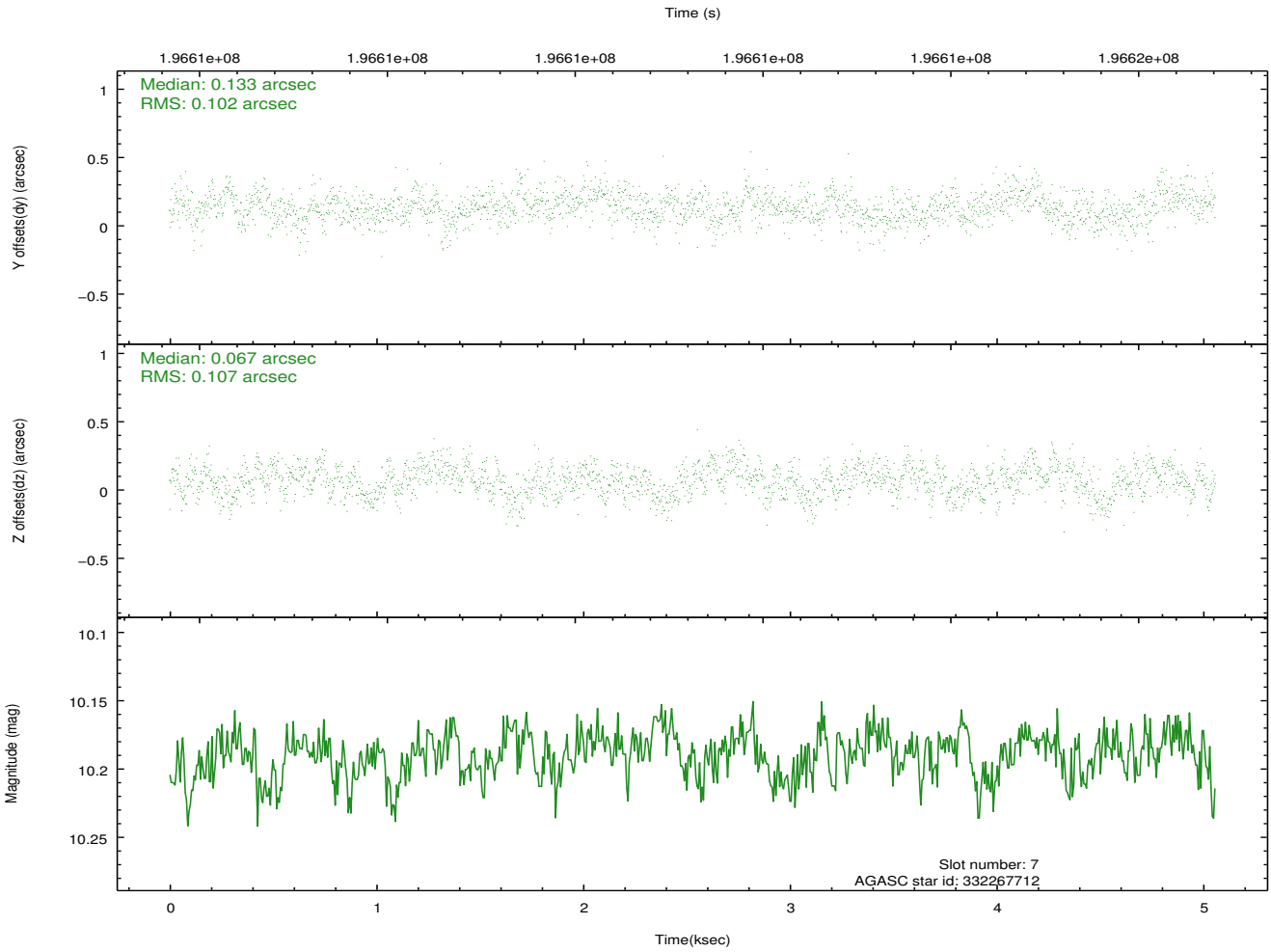
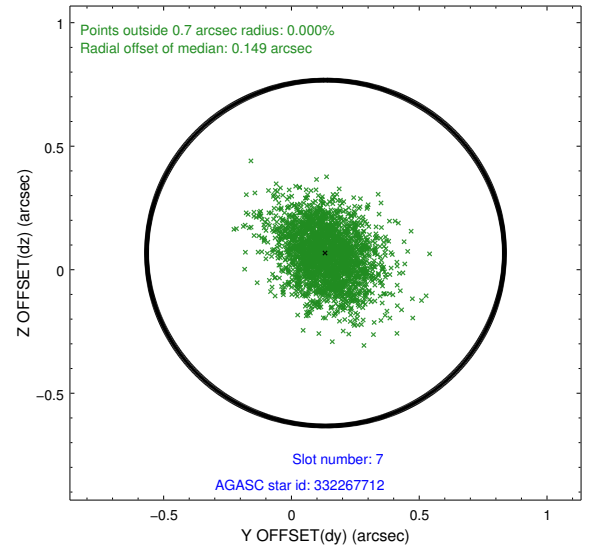
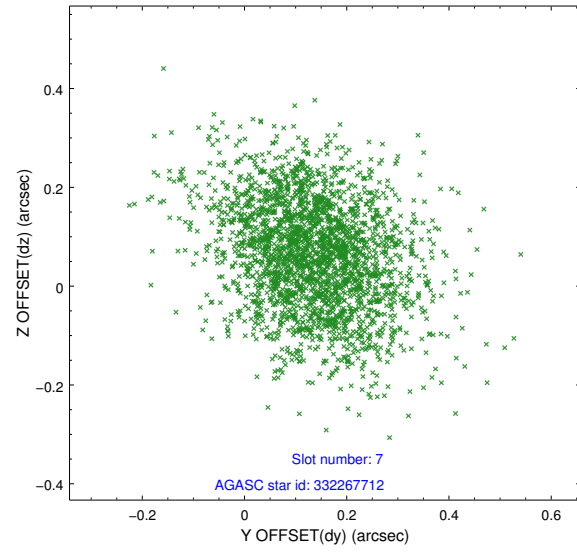


## 2.4.4 Slot 6



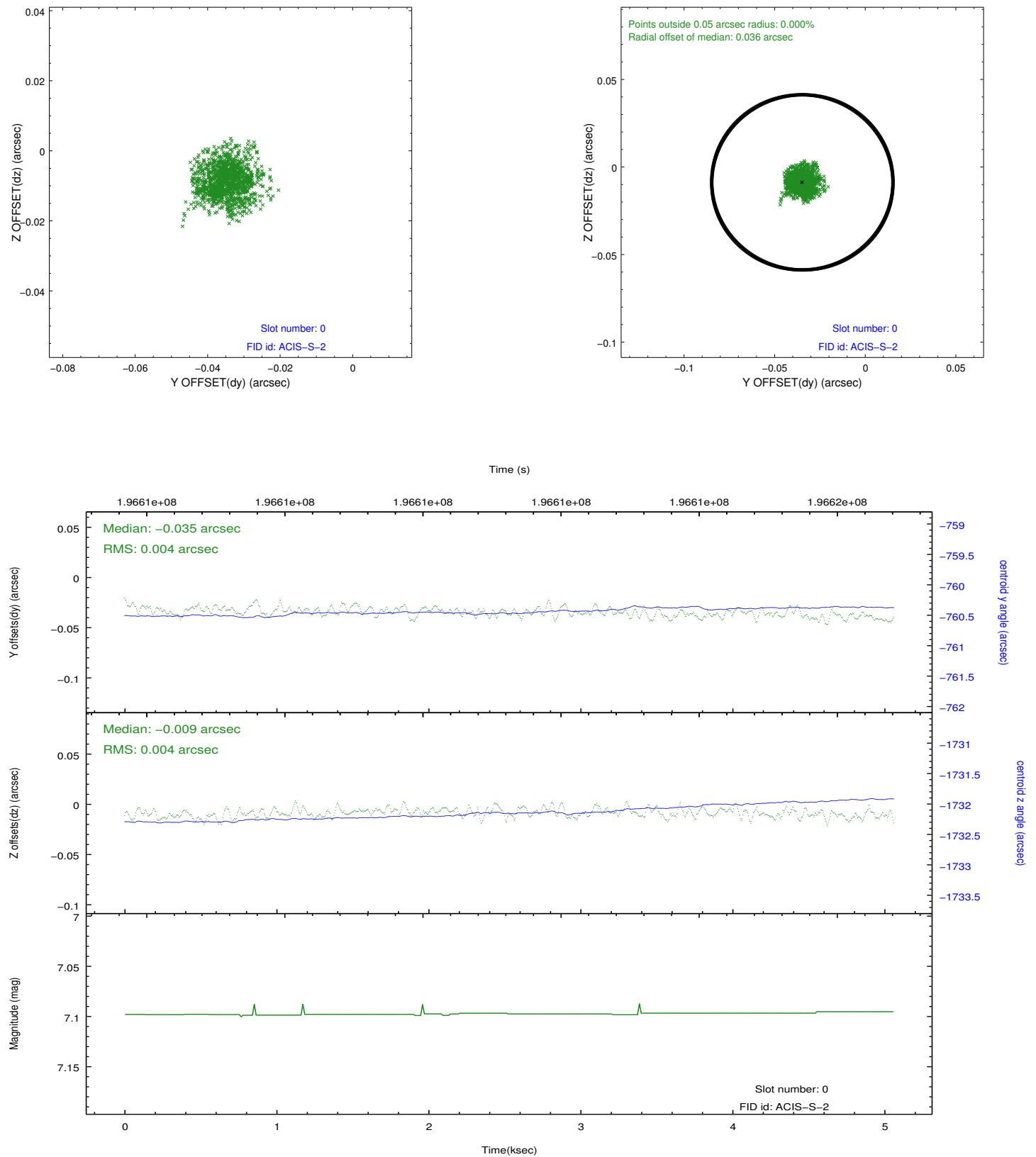


## 2.4.5 Slot 7

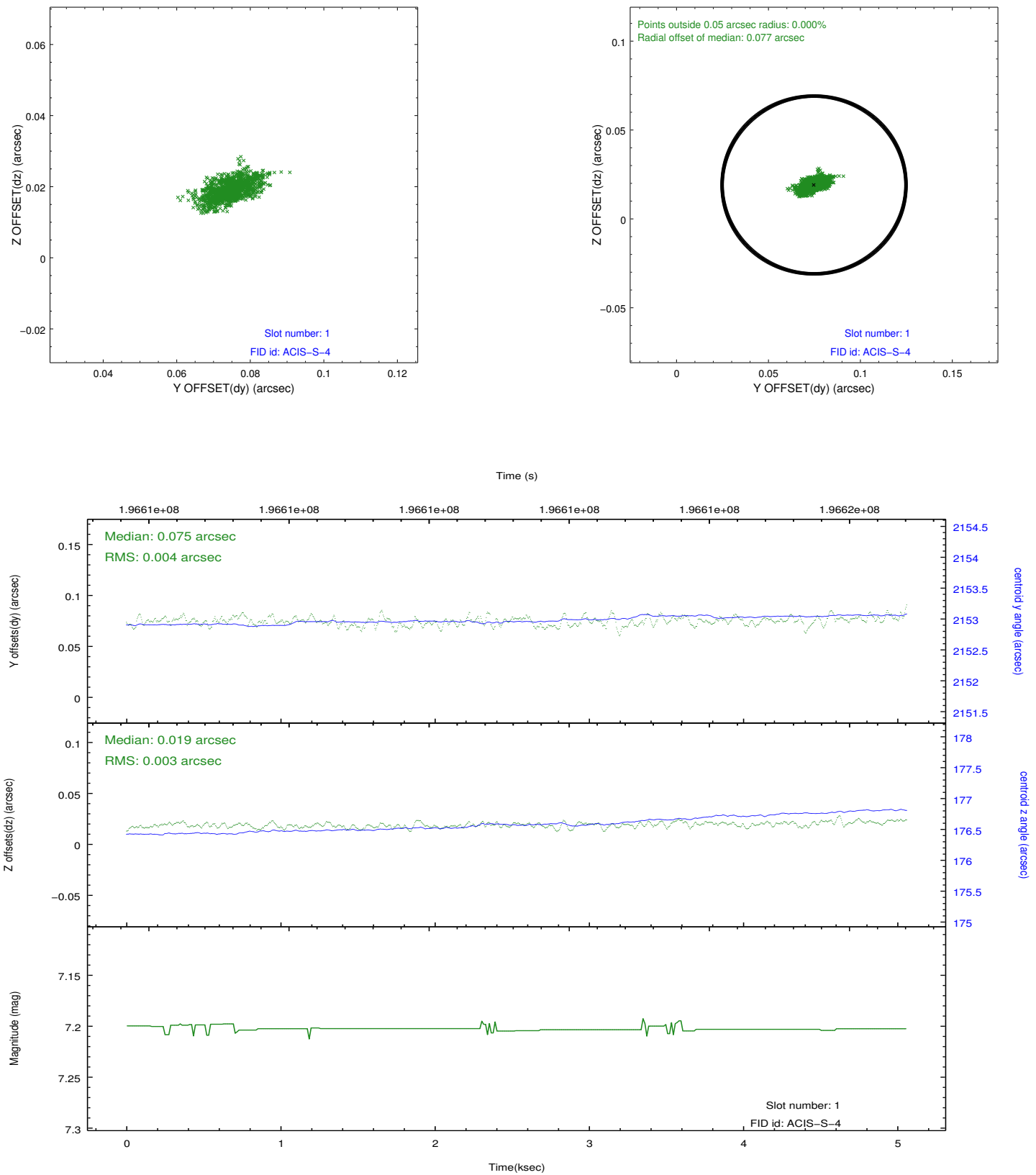


## 2.5 FID Slots

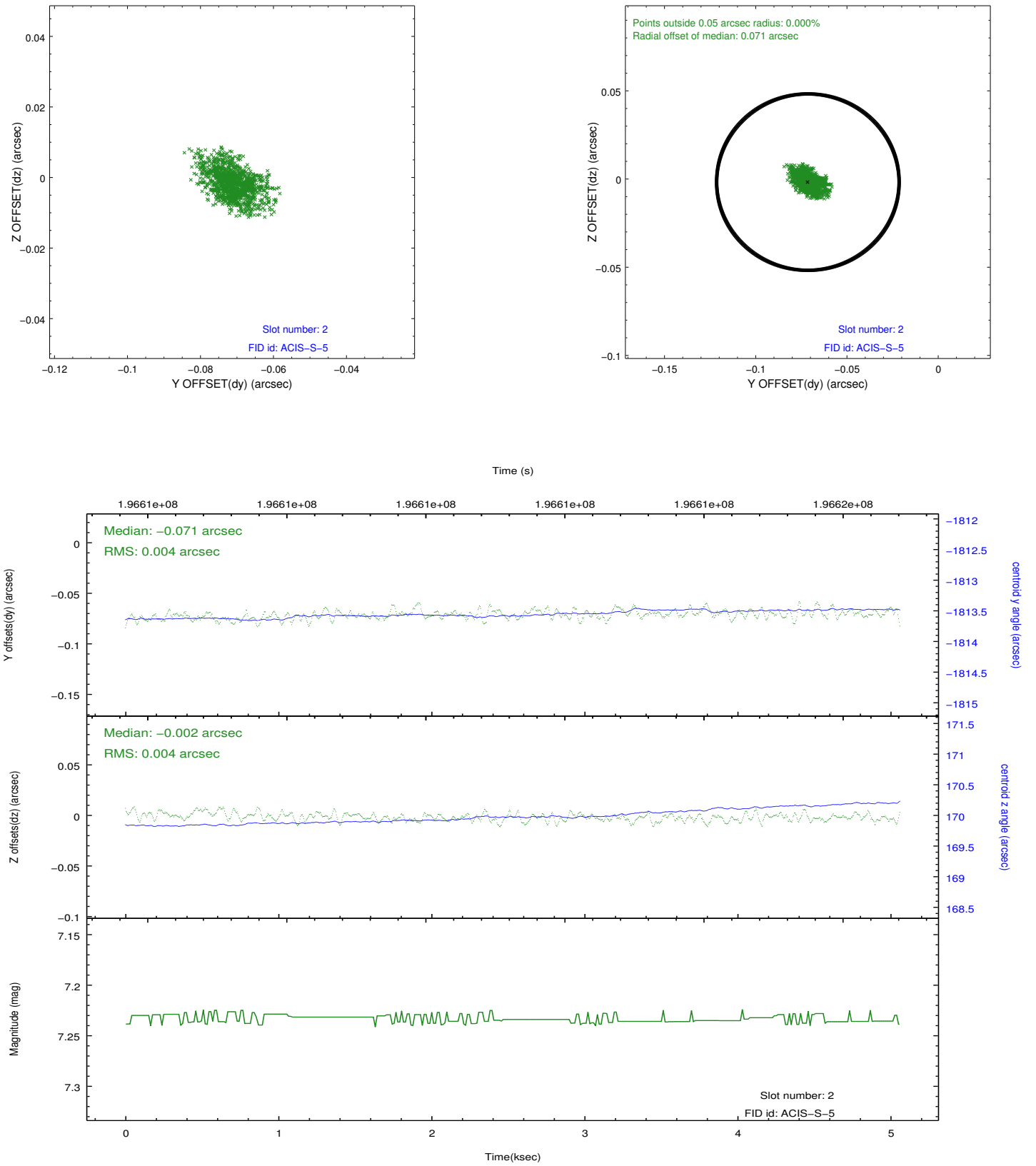
### 2.5.1 Slot 0



## 2.5.2 Slot 1



### 2.5.3 Slot 2



## **A Summary**

### **A.1 Status**

V&V Scientist	Jen Lauer
V&V Date (YYYY-MM-DD)	2012.12.13
V&V Edition	1
V&V Disposition and Status	OK
V&V Charge Time	4.644

### **A.2 Comments**