

# V&V Reference Report

## L2 ASCDS Version : 7.6.7.2

Observation 4776 - L2 Version 001  
Chandra X-Ray Center

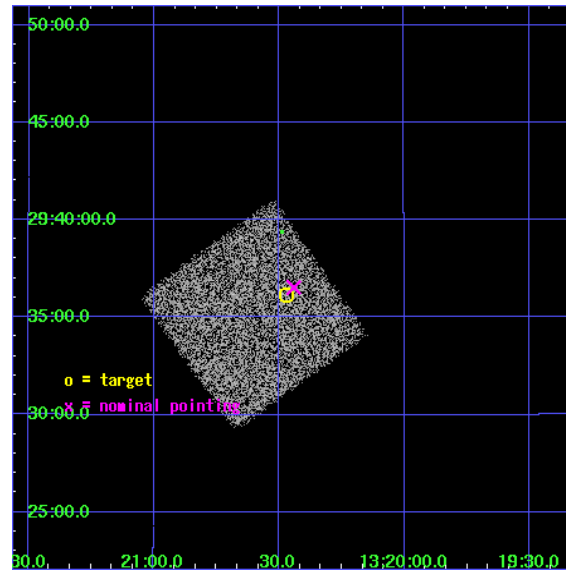
L2 Processing Date : May 31 2006

## Contents

<b>1</b>	<b>Front</b>	<b>2</b>
<b>2</b>	<b>OBI</b>	<b>3</b>
2.1	OBI . . . . .	3
2.1.1	Images . . . . .	3
2.1.2	Bias . . . . .	3
2.1.3	Parameters . . . . .	4
2.1.4	Events . . . . .	4
2.2	Compared Parameters . . . . .	5
2.3	Aspect . . . . .	6
2.4	Star Slots . . . . .	9
2.4.1	Slot 3 . . . . .	9
2.4.2	Slot 4 . . . . .	10
2.4.3	Slot 5 . . . . .	11
2.4.4	Slot 6 . . . . .	12
2.4.5	Slot 7 . . . . .	13
2.5	FID Slots . . . . .	14
2.5.1	Slot 0 . . . . .	14
2.5.2	Slot 1 . . . . .	15
2.5.3	Slot 2 . . . . .	16
<b>3</b>	<b>Point Sources</b>	<b>17</b>
<b>A</b>	<b>Summary</b>	<b>18</b>
A.1	Status . . . . .	18
A.2	Comments . . . . .	18

# 1 Front

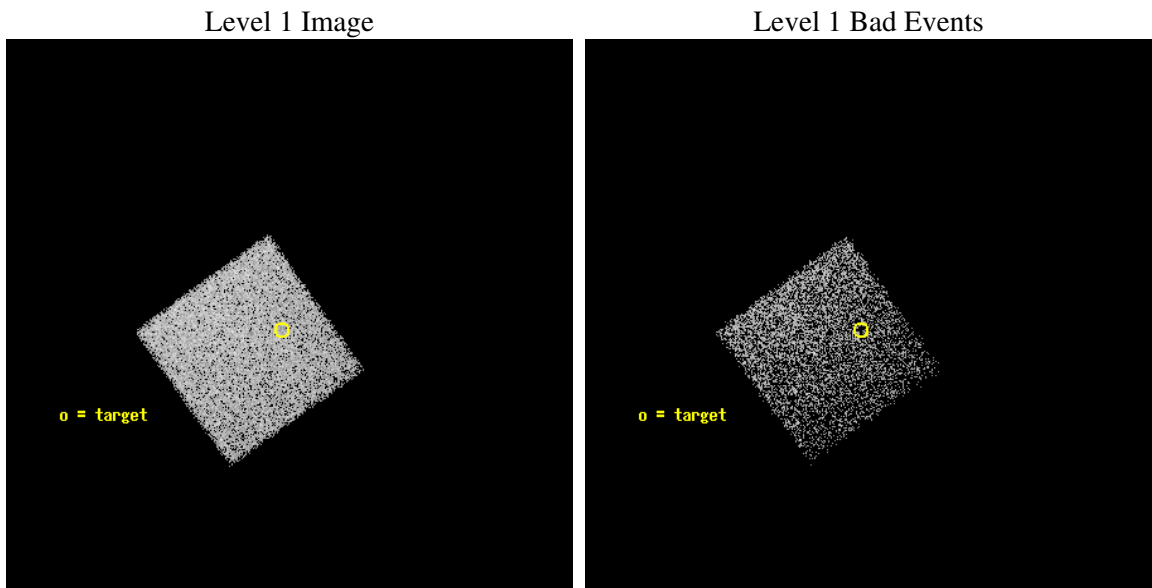
seq_num	700859
obs_id	4776
title	Anchoring the AGN X-ray Luminosity Function
observer	Dr. JOHN SALZER
object	F1320-4207
dtcycle	0
cycle	P
ra_targ	200.118
dec_targ	29.602
ra_nom	200.11018728239
dec_nom	29.608892890998
roll_nom	144.56049603447
revision	3
ontime	4644.0
livetime	4581.3274406124
ontime7	4644.0
l2events	15457



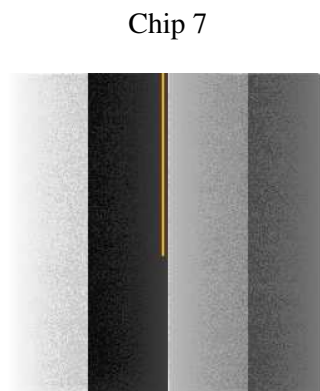
## 2 OBI

### 2.1 OBI

#### 2.1.1 Images



#### 2.1.2 Bias



### 2.1.3 Parameters

obi_num	0
ascdsver	7.6.7.2
caldbver	3.2.2
date	2006-05-31T14:57:04
revision	3

sched_exp_time	4000.000000
ontime	4646.6555342376
ontime7	4646.6555342376
l1events	41655

### 2.1.4 Events

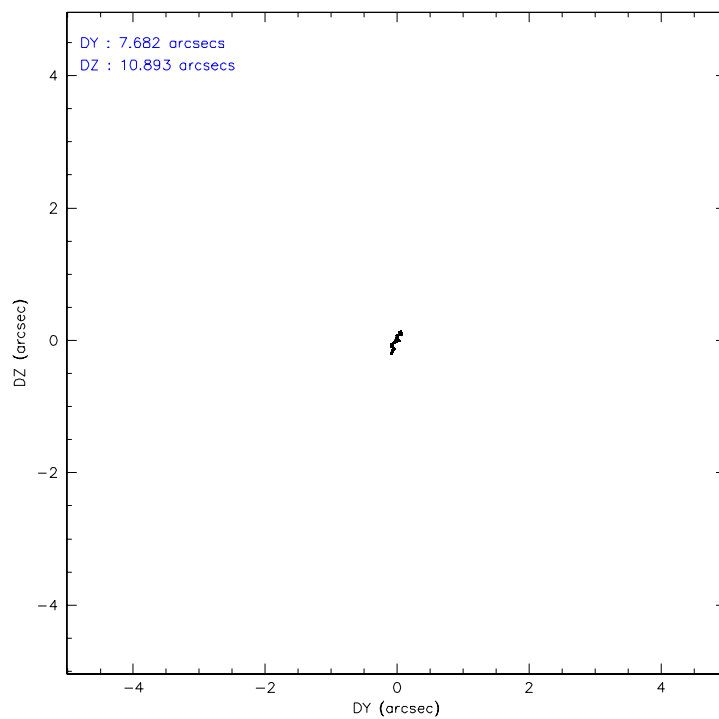
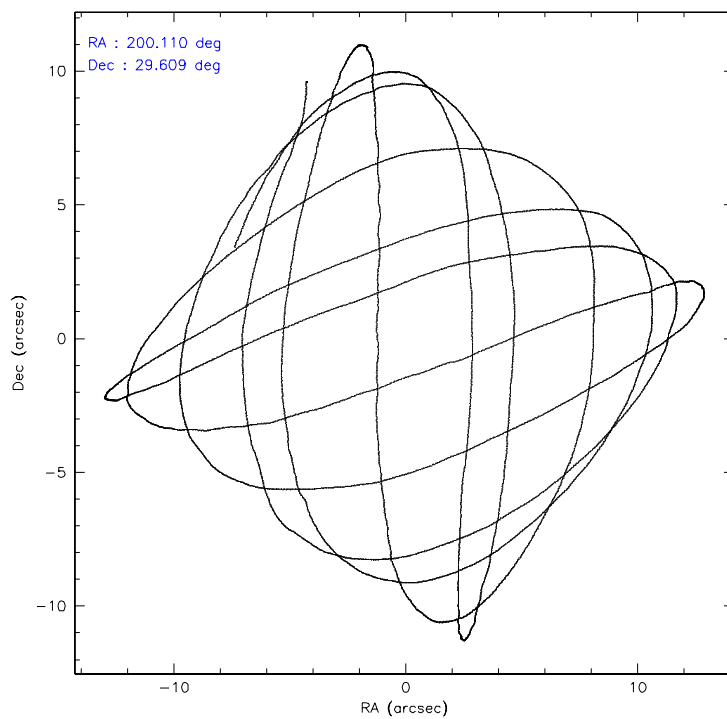
	<b>ccd 7</b>
level 1 events	41655
rejected events	25778
rejected %	61%

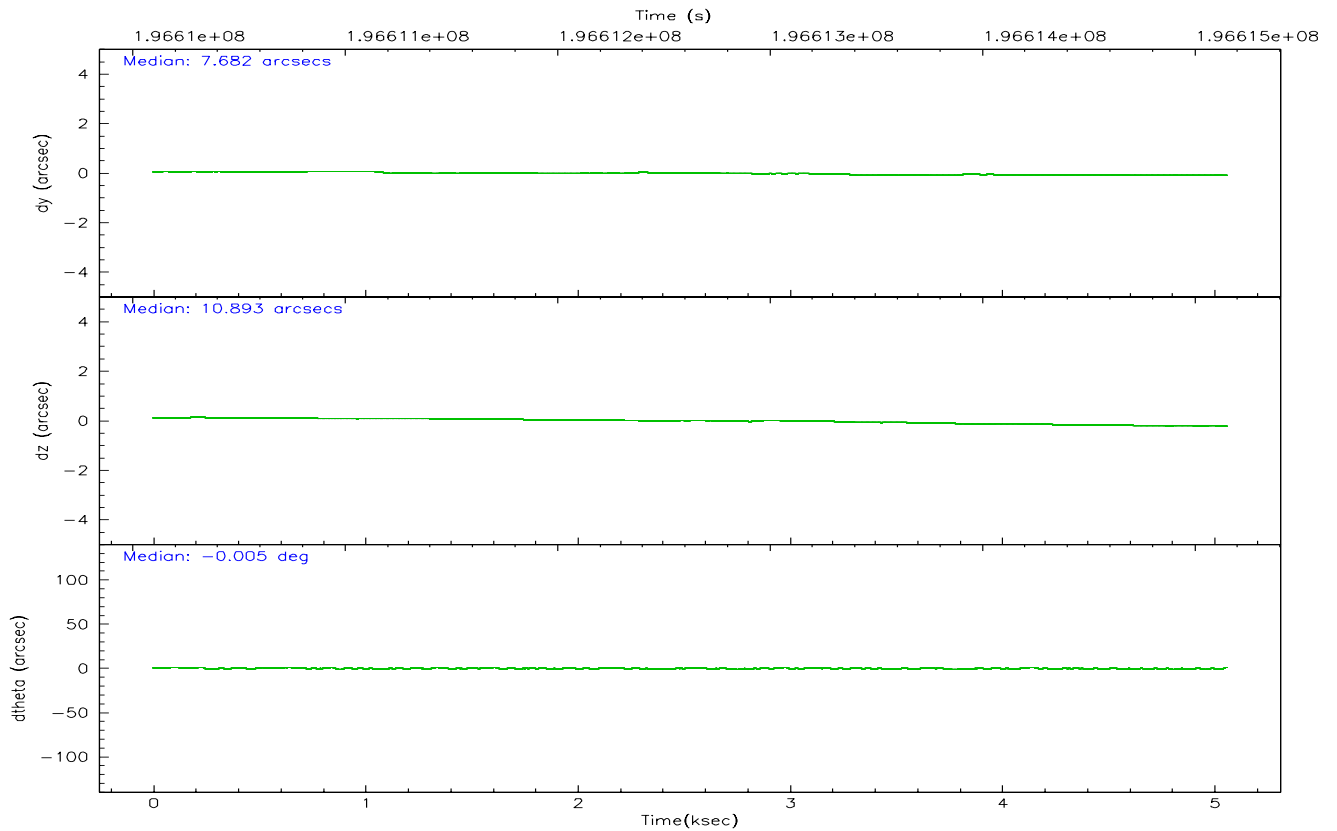
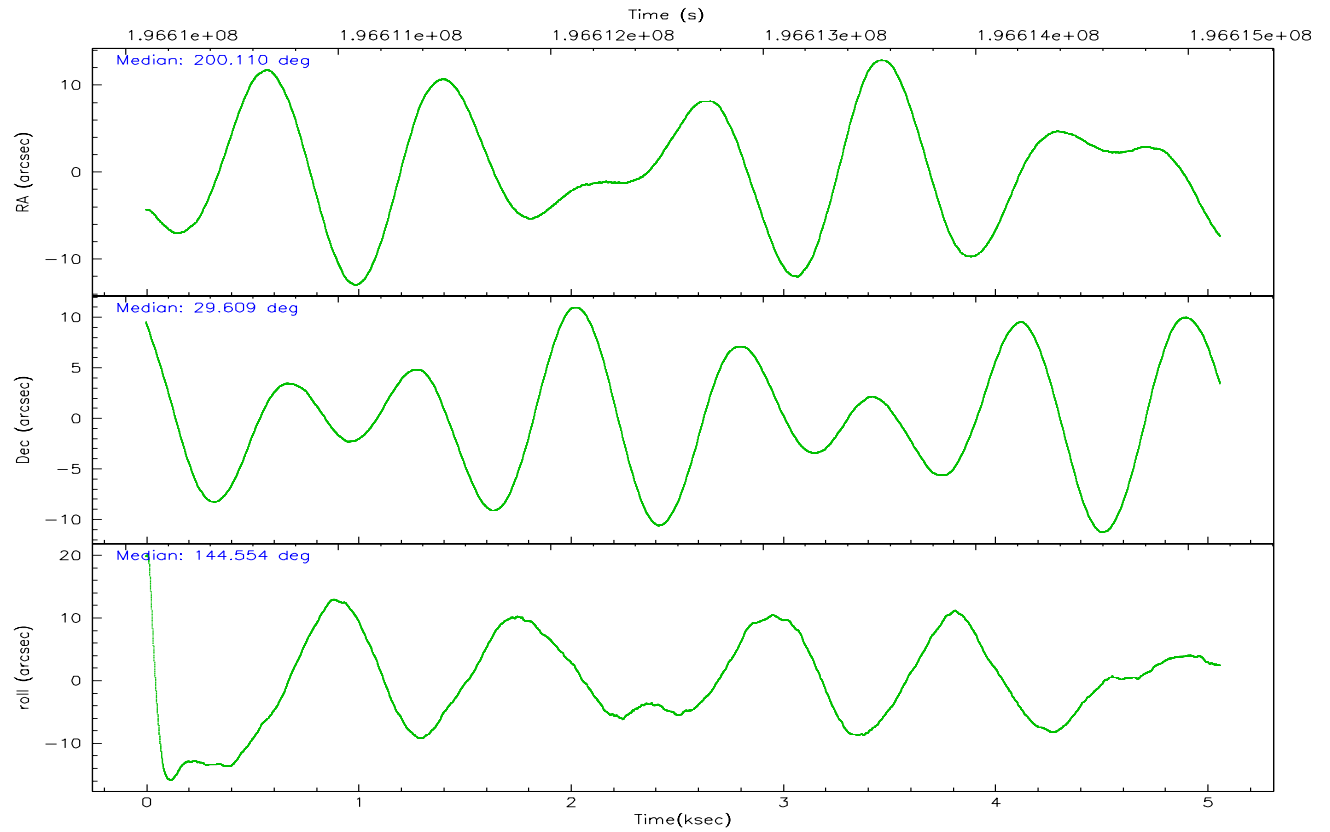
	<b>ccd 7</b>
grade 0 events	876
	2%
grade 1 events	20
	0%
grade 2 events	3978
	9%
grade 3 events	788
	1%
grade 4 events	830
	1%
grade 5 events	2701
	6%
grade 6 events	9412
	22%
grade 7 events	23050
	55%

## 2.2 Compared Parameters

Parameter	Planned	Actual	Parameter	Planned	Actual
Instrument	ACIS	ACIS	Obspar format version number	6	6
Detector	ACIS-7	ACIS-7	Obspar file type	PREDICTED	ACTUAL
Grating	NONE	NONE	Obspar update status	NONE	UPDATED
Data mode	FAINT	FAINT	On-chip summing requested	N	N
Observation mode	POINTING	POINTING	Subarray requested	NONE	NONE
Pointing RA	200.141426	200.1101872823859	Alternating exposures requested	N	N
Pointing Dec	29.606680	29.60889289099793	Primary exposure time	0.000000	3
Pointing Roll	144.388427	144.5604960344738			
SIM focus pos (mm)	-0.684267	-0.6828225247311905			
SIM defocus (mm)	0	0.001444936568705701			
SIM translation stage pos (mm)	-190.132523	-190.1425803651734			
SIM translation stage offset (mm)	0	0.01005778216563158			
Observation start time	196611154.184000	196609754.655			
Observation start date	2004-03-25T14:11:30	2004-03-25T13:49:14			
Observation end time	196615154.184000	196616279.29278			
Observation end date	2004-03-25T15:18:10	2004-03-25T15:37:59			
Read mode	TIMED	TIMED			

## 2.3 Aspect





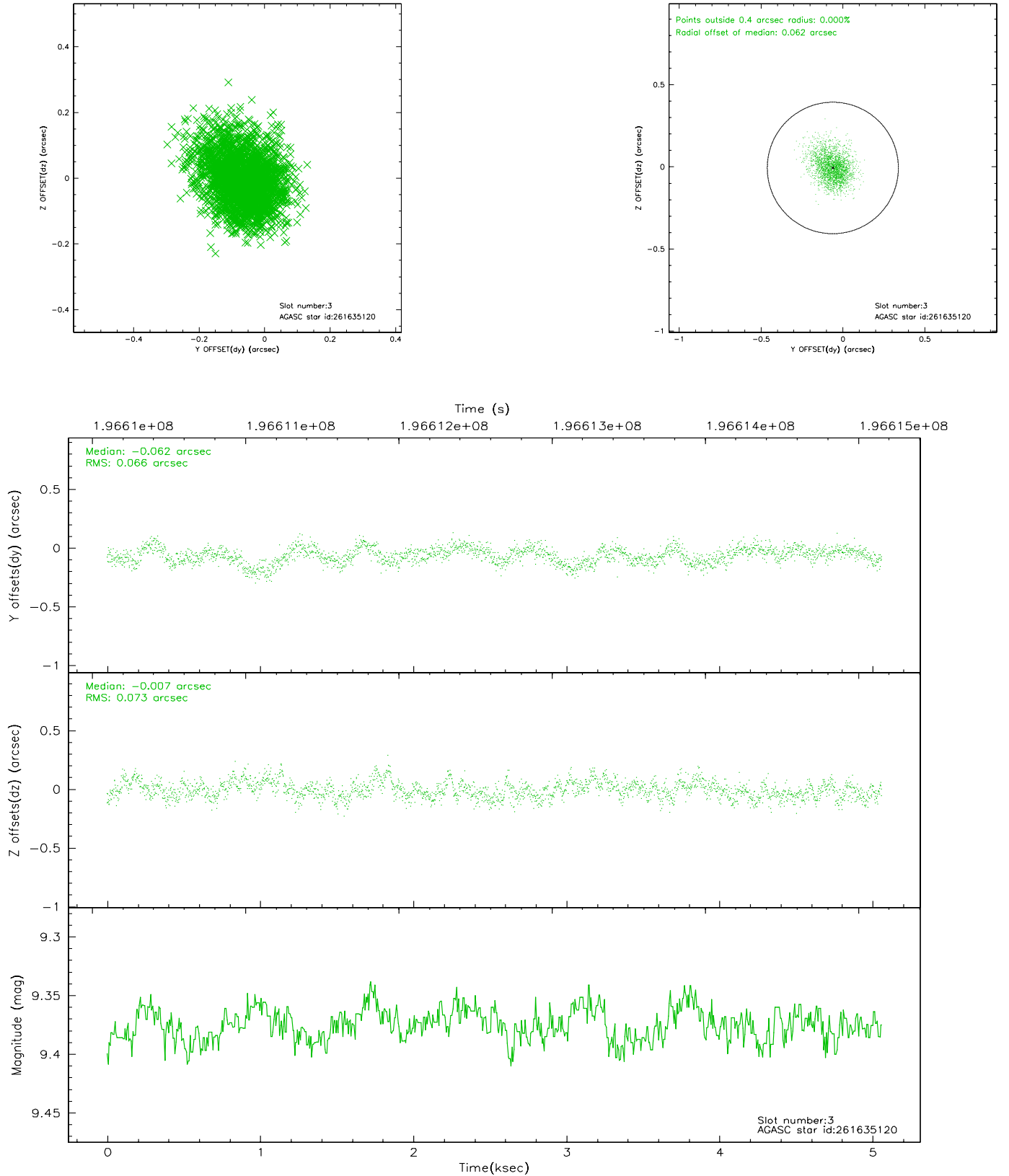
### Slot Statistics

slot	status	id	mag	n_pts	med_dy	med_dz	dr1	dr2	ra	dec	mean_y	mean_z
0	FID	ACIS-S-2	7.10	1235	-0.023	0.015	0.007	0.010	0.000000	0.000000	-760.43	-1732.10
1	FID	ACIS-S-4	7.20	1235	0.033	0.007	0.005	0.008	0.000000	0.000000	2152.32	175.19
2	FID	ACIS-S-5	7.23	1234	-0.041	-0.013	0.006	0.010	0.000000	0.000000	-1811.78	170.13
3	GUIDE	261635120	9.37	2470	-0.062	-0.007	0.104	0.172	200.629723	29.931982	-554.53	-1841.32
4	GUIDE	261636736	9.85	2467	0.048	-0.022	0.144	0.227	200.597637	29.120397	-2184.14	584.99
5	GUIDE	261637664	10.47	2466	0.044	-0.167	0.264	0.434	200.331702	28.823138	-2131.30	1943.72
6	GUIDE	262538384	10.07	2468	-0.155	0.132	0.169	0.257	201.107455	29.696999	-2260.08	-2032.52
7	GUIDE	332267712	10.19	2466	0.133	0.067	0.155	0.261	199.837749	30.390593	2410.22	-1746.26

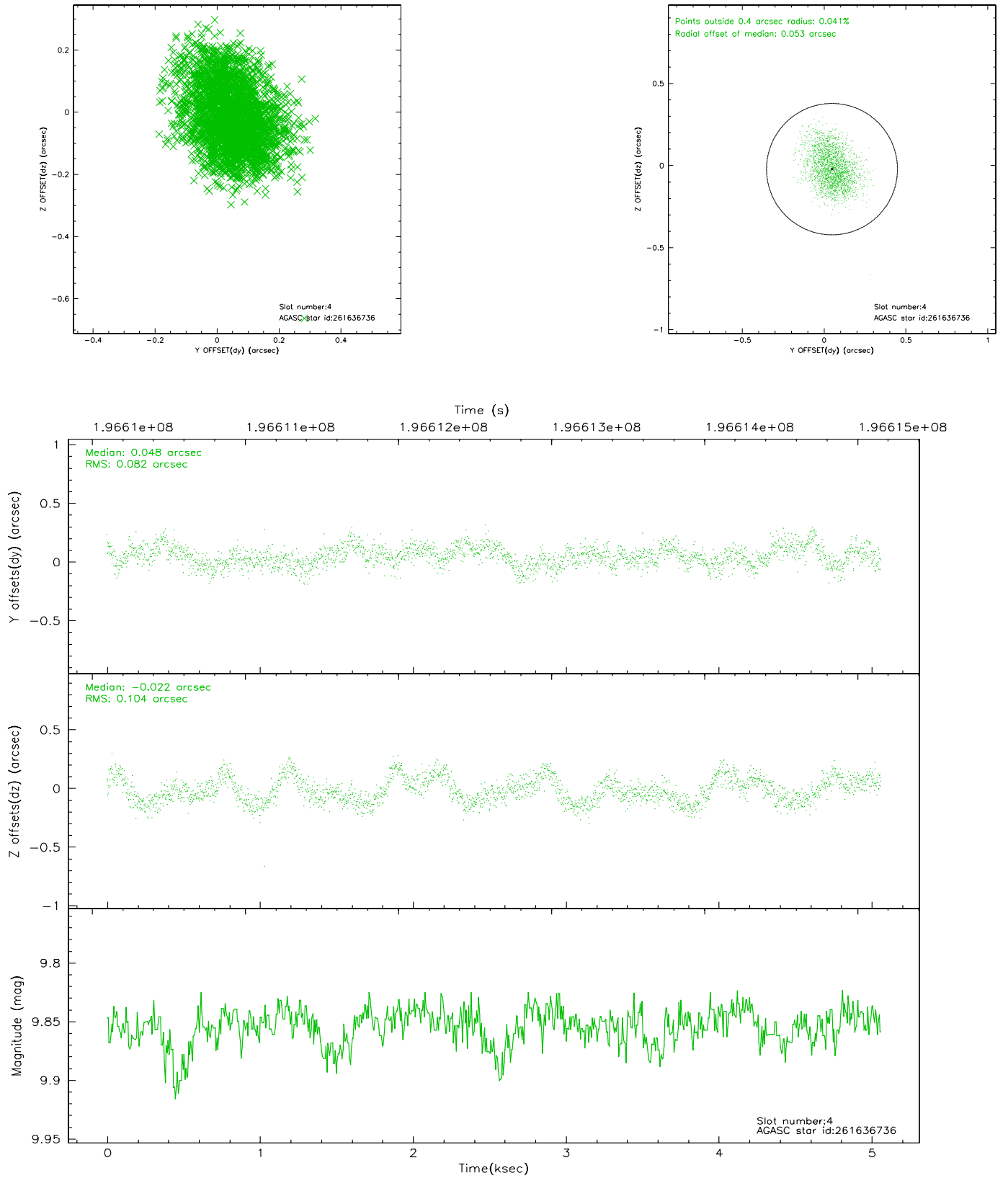


## 2.4 Star Slots

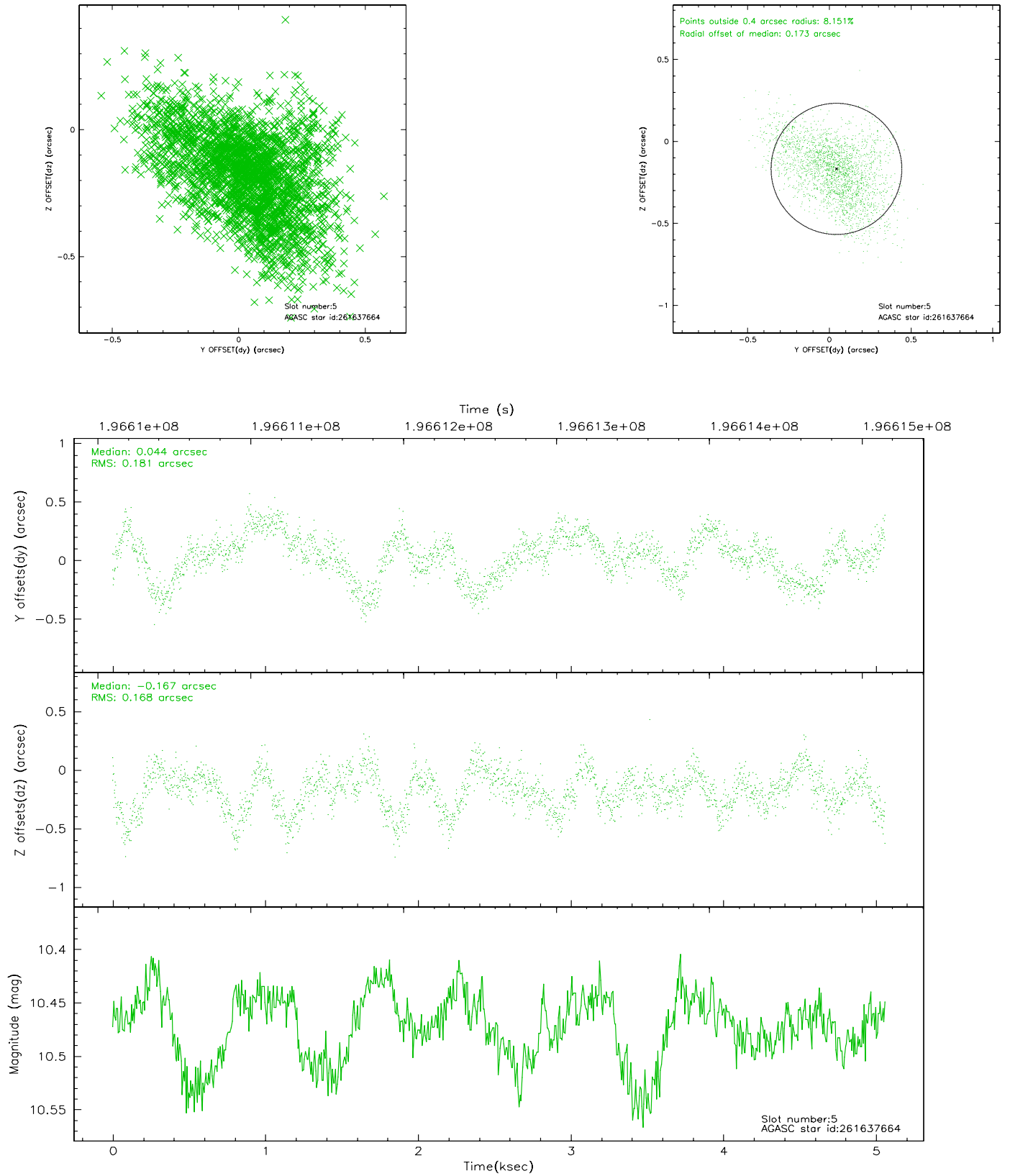
### 2.4.1 Slot 3



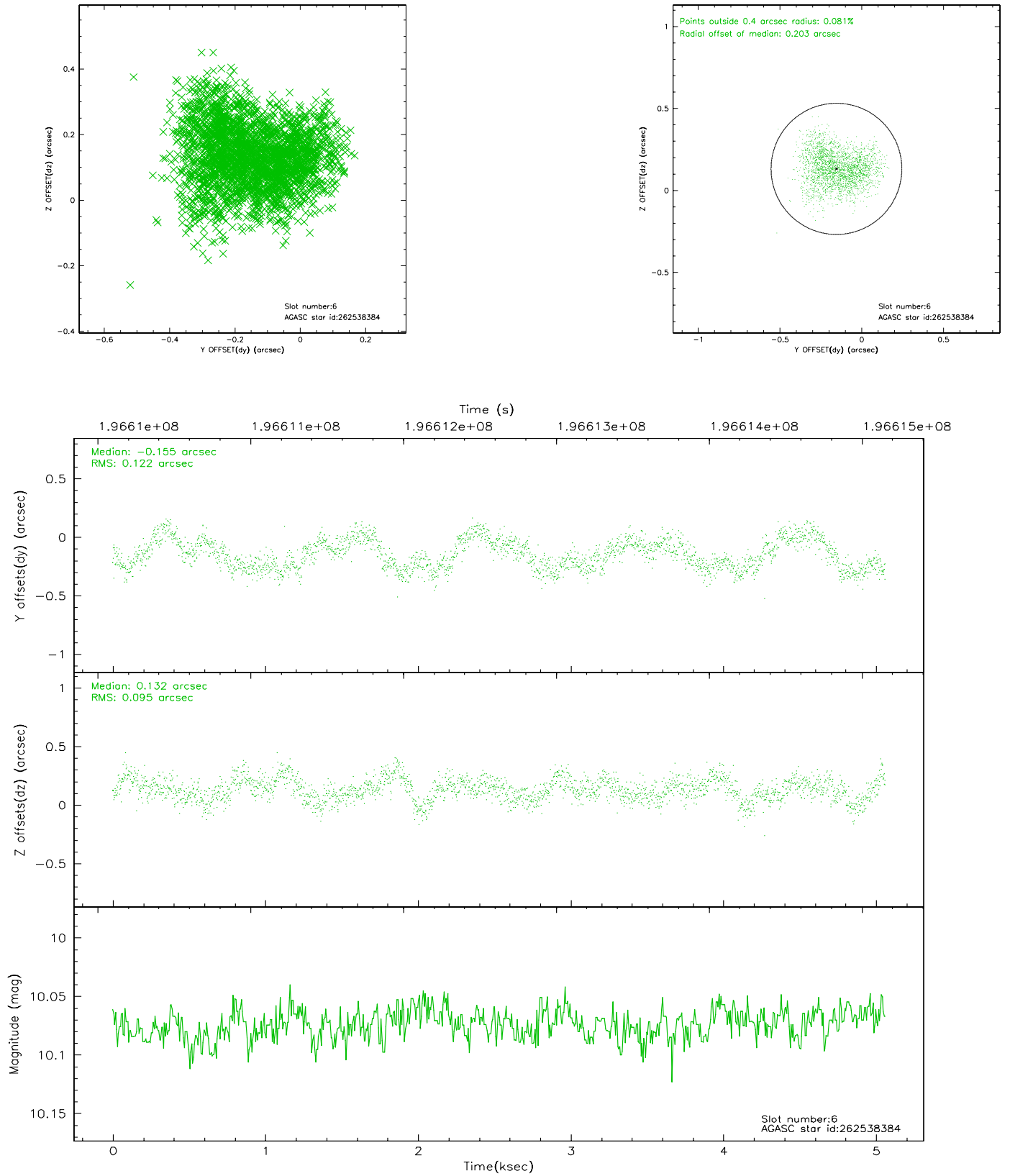
## 2.4.2 Slot 4



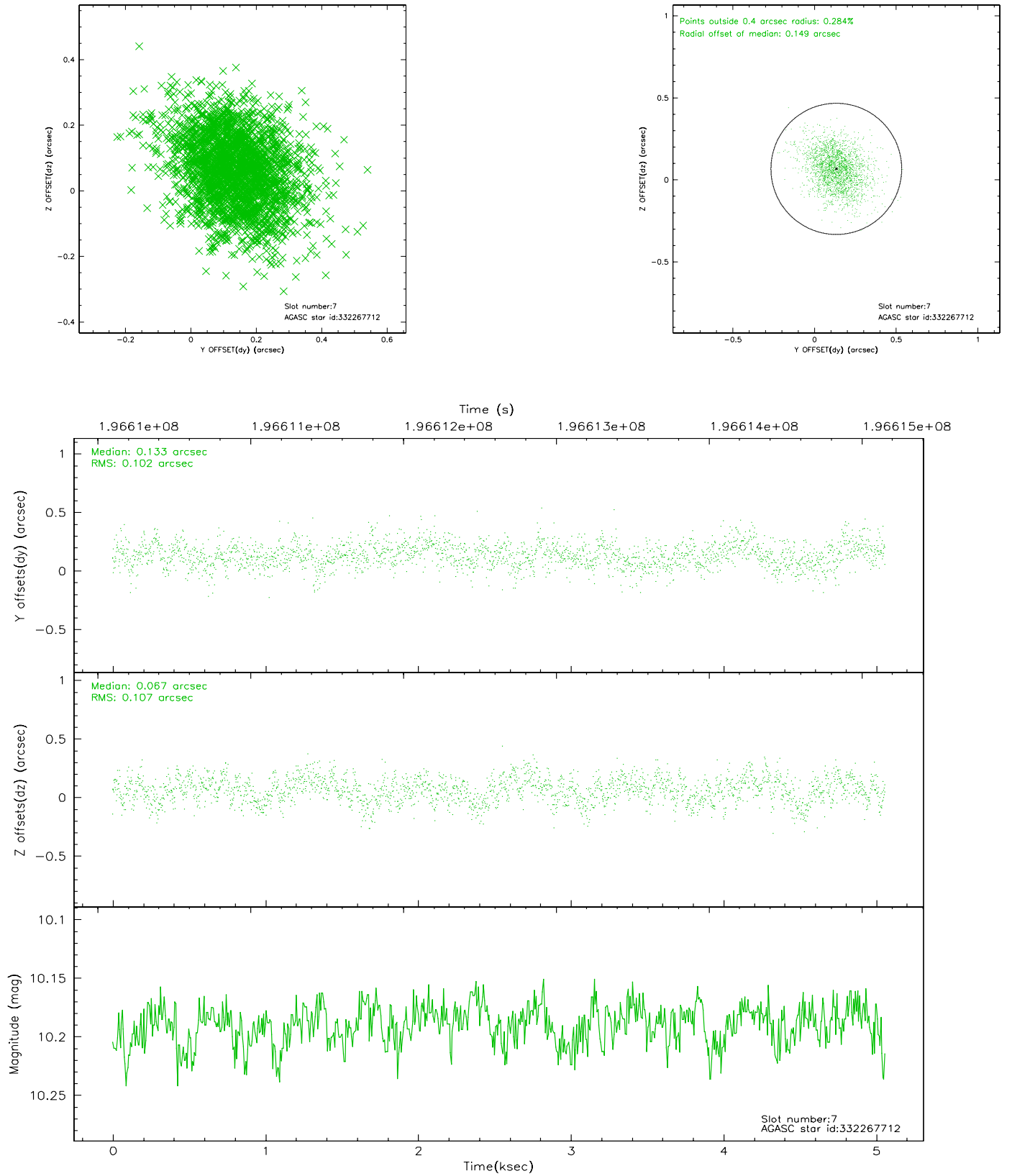
### 2.4.3 Slot 5



## 2.4.4 Slot 6

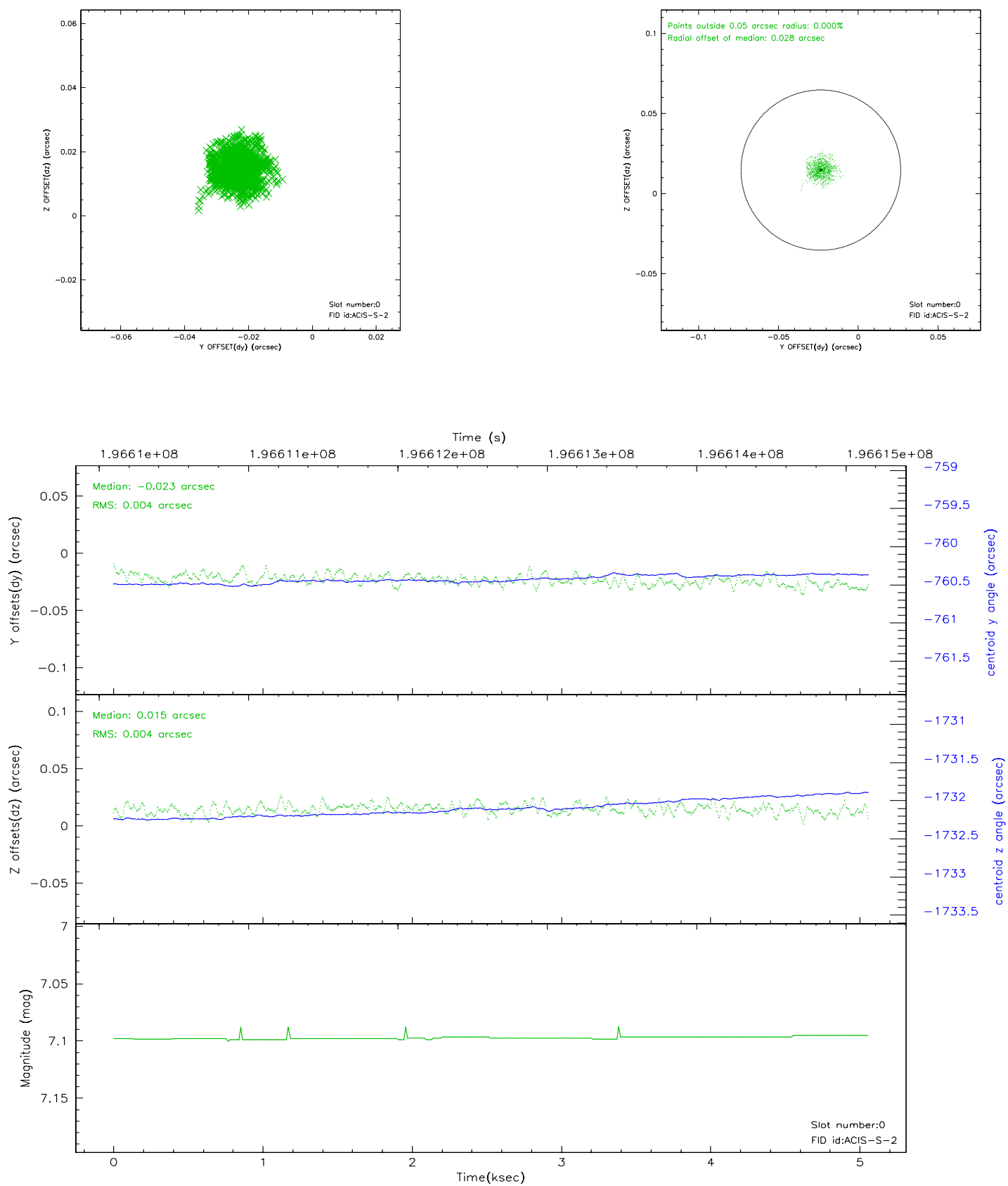


## 2.4.5 Slot 7

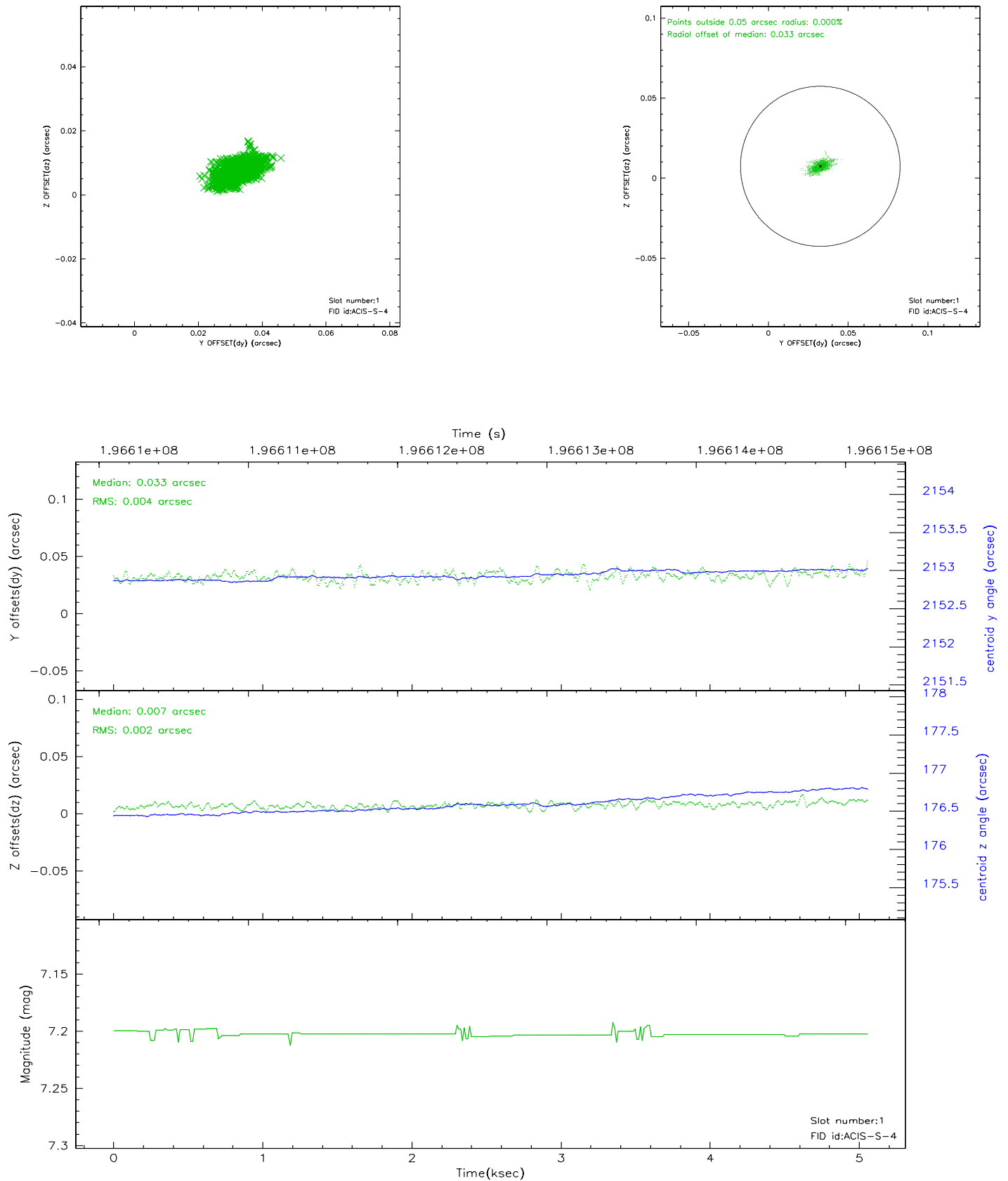


## 2.5 FID Slots

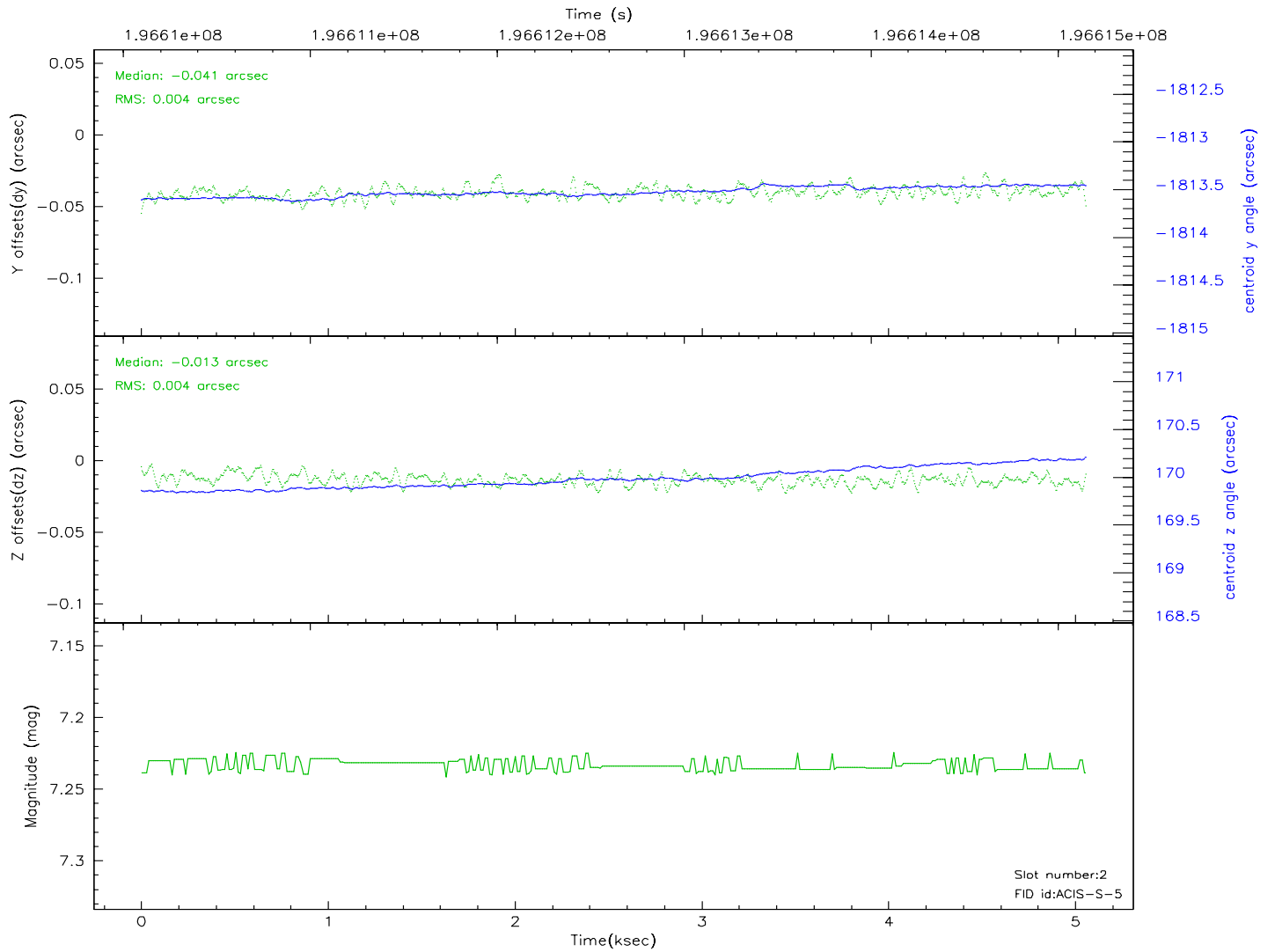
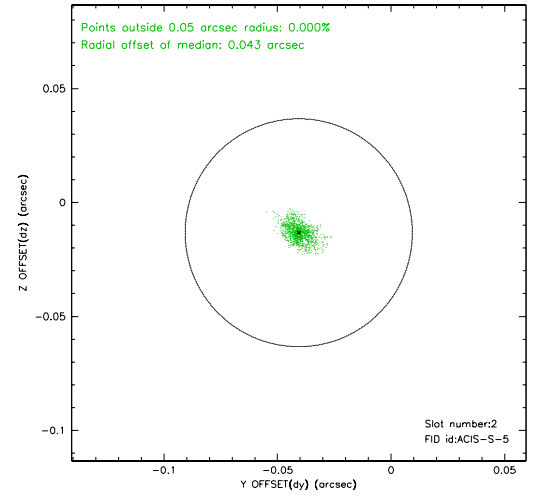
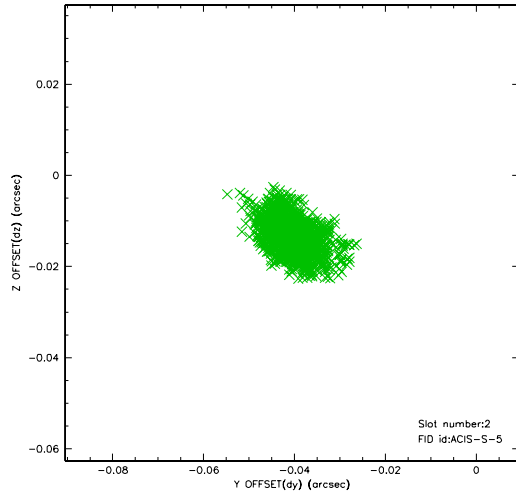
### 2.5.1 Slot 0



## 2.5.2 Slot 1



### 2.5.3 Slot 2





### 3 Point Sources

## A Summary

### A.1 Status

V&V Scientist	Jen Lauer
V&V Date (YYYY-MM-DD)	2006.05.31
V&V Edition	1
V&V Disposition and Status	OK
V&V Charge Time	4.644

### A.2 Comments