

# V&V Reference Report

## L2 ASCDS Version : 8.4.5

Observation 4766 - L2 Version 3  
Chandra X-Ray Center

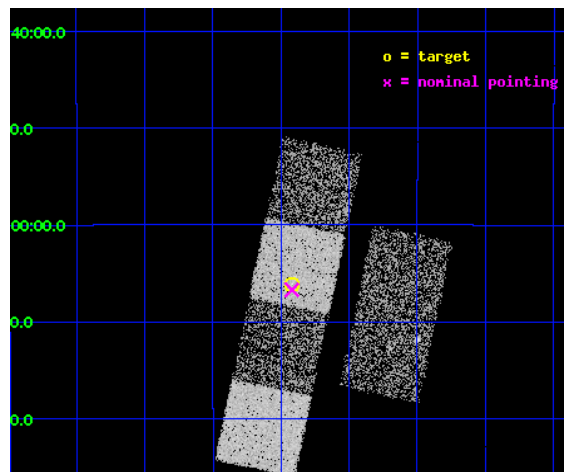
L2 Processing Date : Nov 11 2012

## Contents

<b>1</b>	<b>Front</b>	<b>2</b>
<b>2</b>	<b>OBI</b>	<b>3</b>
2.1	OBI . . . . .	3
2.1.1	Images . . . . .	3
2.1.2	Bias . . . . .	3
2.1.3	Parameters . . . . .	4
2.1.4	Events . . . . .	4
2.2	Compared Parameters . . . . .	5
2.3	Aspect . . . . .	6
2.4	Star Slots . . . . .	9
2.4.1	Slot 3 . . . . .	9
2.4.2	Slot 4 . . . . .	10
2.4.3	Slot 5 . . . . .	11
2.4.4	Slot 6 . . . . .	12
2.4.5	Slot 7 . . . . .	13
2.5	FID Slots . . . . .	14
2.5.1	Slot 0 . . . . .	14
2.5.2	Slot 1 . . . . .	15
2.5.3	Slot 2 . . . . .	16
<b>A</b>	<b>Summary</b>	<b>17</b>
A.1	Status . . . . .	17
A.2	Comments . . . . .	17

# 1 Front

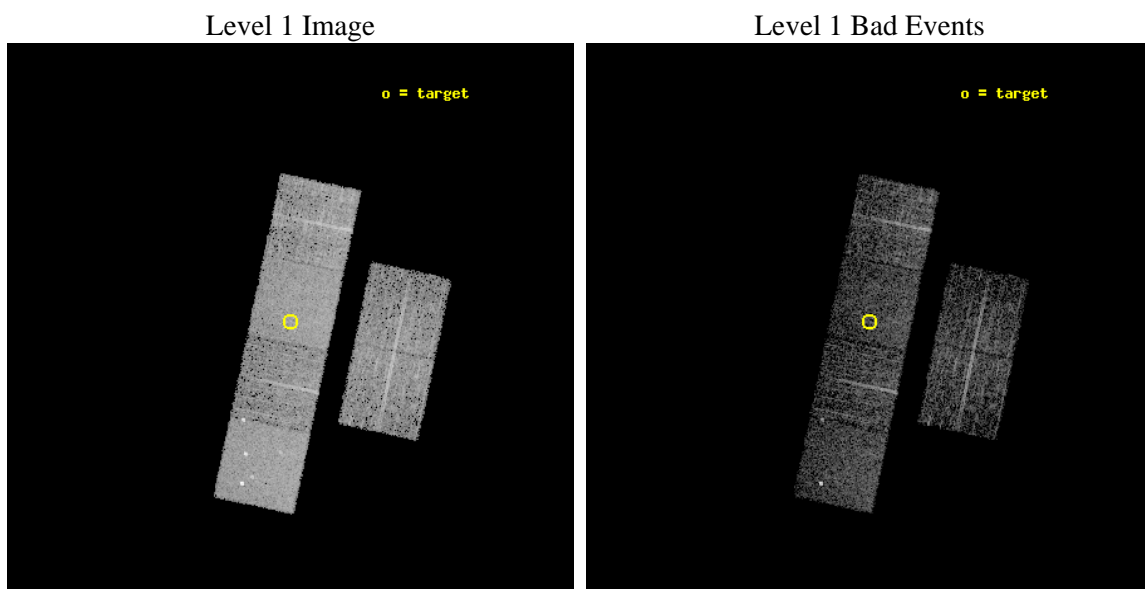
seq_num	700849	Sequence number
obs_id	4766	Observation id
title	A Chandra Survey of Luminous, Radio-Loud Quasars at High Redshift	&#160
observer	Professor Gordon Garmire	Principal investigator
object	PMN J0235-1805	Source name
dtcycle	0	&#160
cycle	P	events from which exps? Prim/Second/Both
ra_targ	38.729583	Observer's specified target RA [deg]
dec_targ	-18.102333	Observer's specified target Dec [deg]
ra_nom	38.729946489735	Nominal RA [deg]
dec_nom	-18.111973381631	Nominal Dec [deg]
roll_nom	281.91225859228	Nominal Roll [deg]
revision	3	Processing version of data
ontime	3910.3999854326	Sum of GTIs [s]
livetime	3860.8841462569	Livetime [s]
ontime2	3910.3999854326	Sum of GTIs [s]
ontime3	3910.3999854326	Sum of GTIs [s]
ontime5	3910.3999854326	Sum of GTIs [s]
ontime6	3910.3999854326	Sum of GTIs [s]
ontime7	3910.3999854326	Sum of GTIs [s]
ontime8	3910.3999854326	Sum of GTIs [s]
l2events	38289	Number of level 2 events



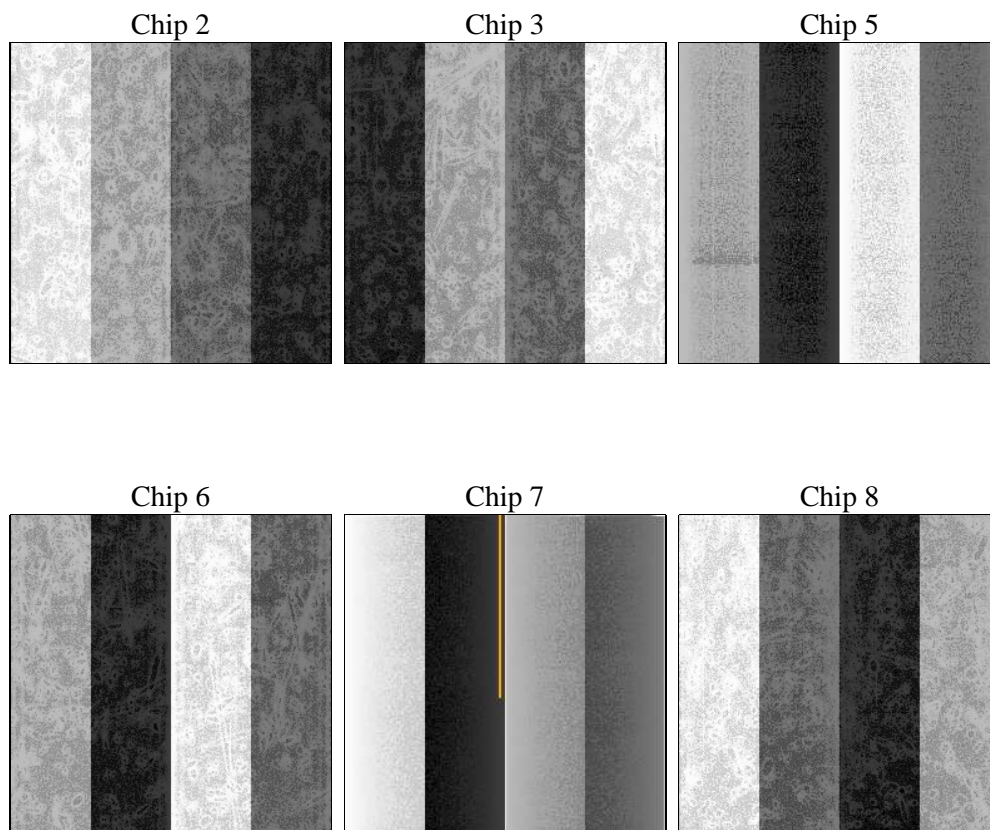
## 2 OBI

### 2.1 OBI

#### 2.1.1 Images



#### 2.1.2 Bias



### 2.1.3 Parameters

obi_num	0	Obi number	sched_exp_time	3947.000000	[s] Scheduled observation exposure time
ascdsver	8.4.5	Processing system revision	ontime	3910.3999854326	Sum of GTIs [s]
caldsver	4.5.2	&#160	ontime2	3910.3999854326	Sum of GTIs [s]
date	2012-11-11T14:42:05	Date and time of file creation	ontime3	3910.3999854326	Sum of GTIs [s]
revision	3	Processing version of data	ontime5	3910.3999854326	Sum of GTIs [s]
			ontime6	3910.3999854326	Sum of GTIs [s]
			ontime7	3910.3999854326	Sum of GTIs [s]
			ontime8	3910.3999854326	Sum of GTIs [s]
			l1events	171038	Number of level 1 events

### 2.1.4 Events

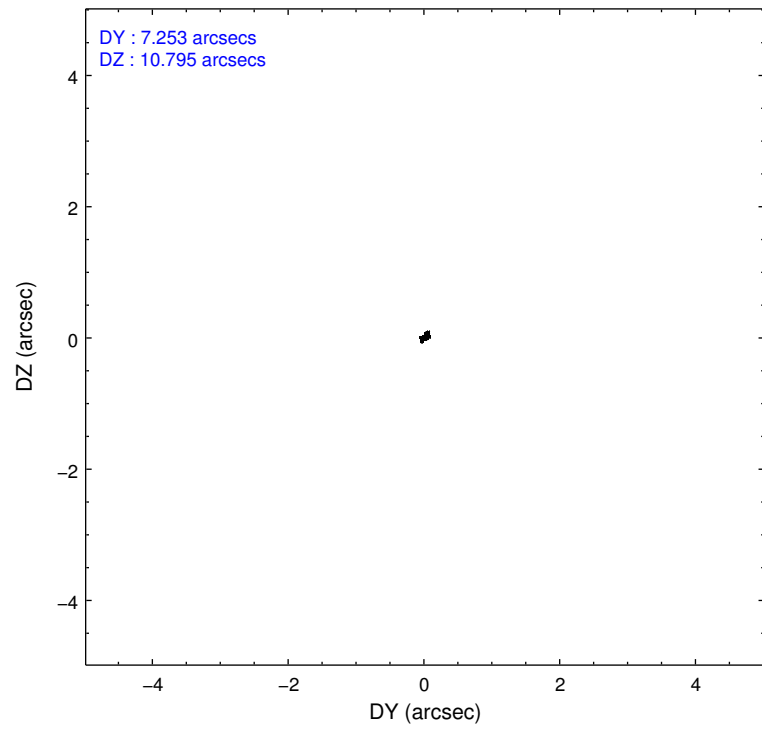
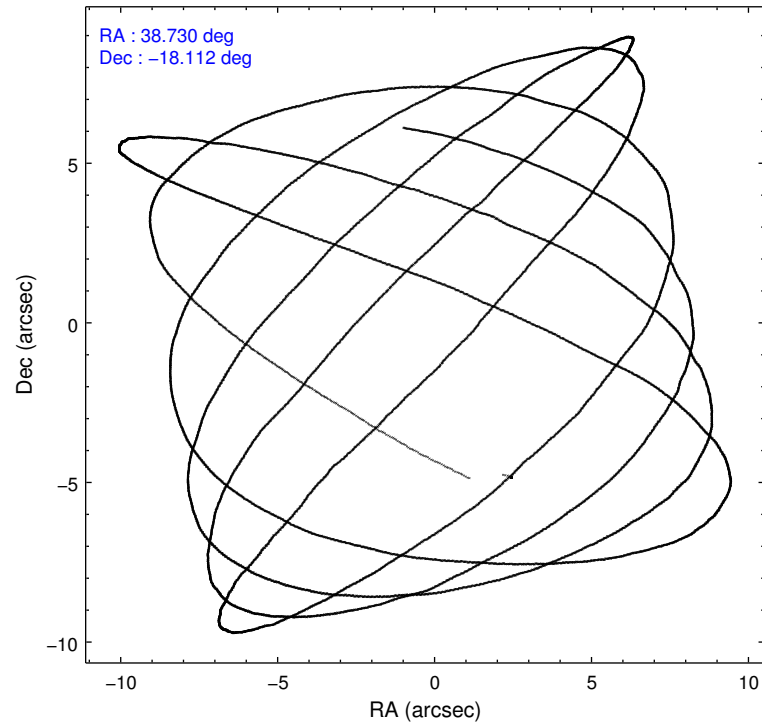
	ccd 2	ccd 3	ccd 5	ccd 6	ccd 7	ccd 8		ccd 2	ccd 3	ccd 5	ccd 6	ccd 7	ccd 8
level 1 events	24561	21282	37786	23161	32410	31838	grade 0 events	1465	1178	2290	1094	1232	2034
rejected events	21471	18576	20434	20369	19121	25153		5%	5%	6%	4%	3%	6%
rejected %	87%	87%	54%	87%	58%	79%	grade 1 events	11	14	137	14	35	21
								0%	0%	0%	0%	0%	0%
							grade 2 events	611	503	5204	607	2636	1456
								2%	2%	13%	2%	8%	4%
							grade 3 events	263	246	680	266	1237	723
								1%	1%	1%	1%	3%	2%
							grade 4 events	273	287	696	280	1173	723
								1%	1%	1%	1%	3%	2%
							grade 5 events	978	996	2946	1169	3208	1438
								3%	4%	7%	5%	9%	4%
							grade 6 events	478	492	8502	548	7021	1754
								1%	2%	22%	2%	21%	5%
							grade 7 events	20482	17566	17331	19183	15868	23689
								83%	82%	45%	82%	48%	74%

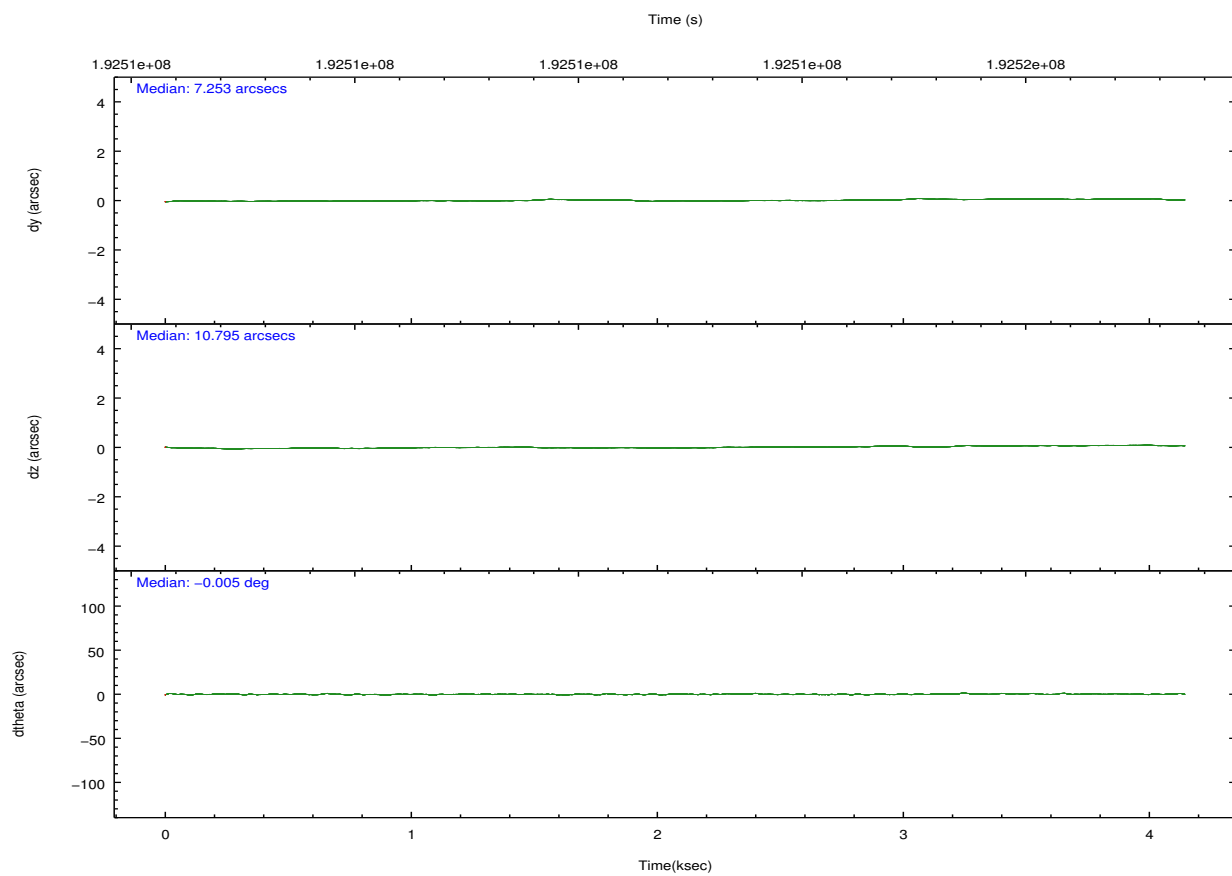
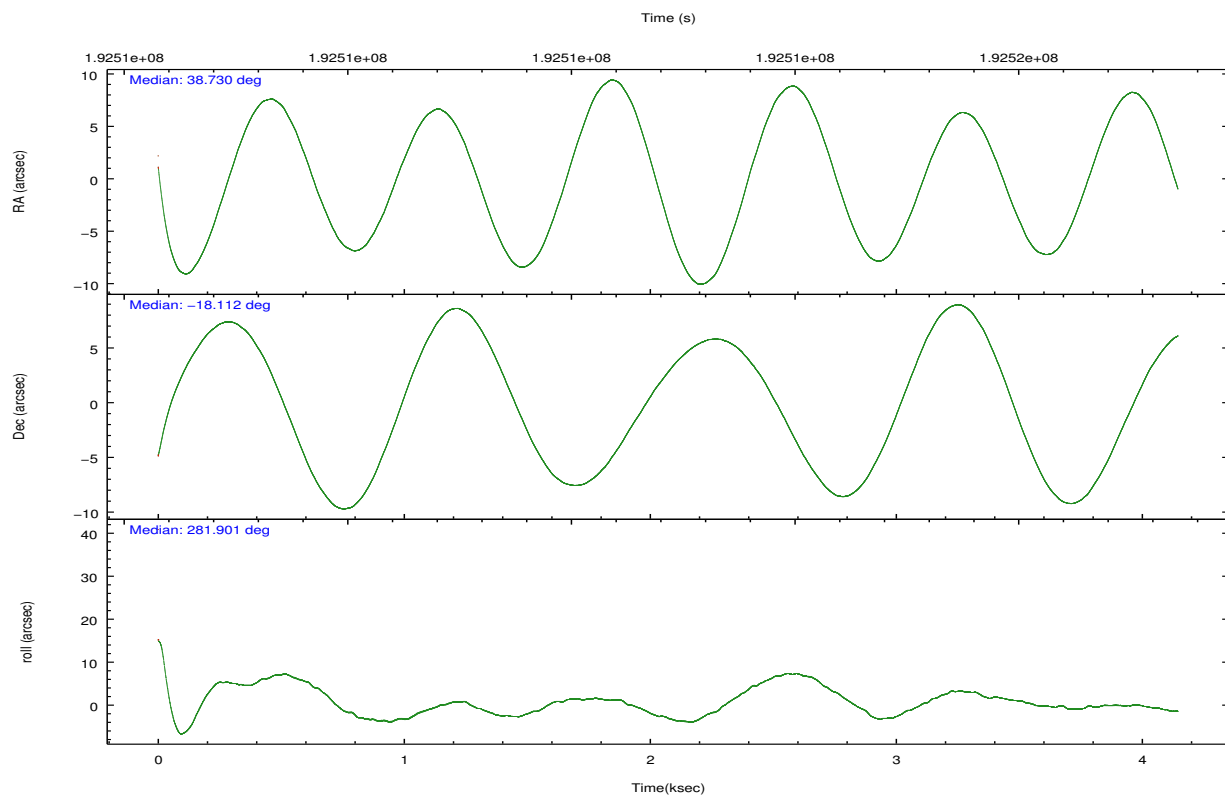


## 2.2 Compared Parameters

Parameter	Planned	Actual	Parameter	Planned	Actual
Instrument	ACIS	ACIS	Obspar format version number	7	7
Detector	ACIS-235678	ACIS-235678	Obspar file type	PREDICTED	ACTUAL
Grating	NONE	NONE	Obspar update status	NONE	UPDATED
Data mode	FAINT	FAINT	Number of optional ACIS chips dropped	0	0
Observation mode	POINTING	POINTING	On-chip summing requested	N	N
[deg] Pointing RA	38.710489	38.72994648973514	Subarray requested	NONE	NONE
[deg] Pointing Dec	-18.091980	-18.11197338163094	Alternating exposures requested	N	N
[deg] Pointing Roll	281.749532	281.9122585922844	[s] Primary exposure time	0.000000	3.2
[mm] SIM focus pos	-0.684267	-0.6828225247311905			
[mm] SIM defocus	0	0.001444936568705701			
[mm] SIM translation stage pos	-190.132523	-190.1425803651734			
[mm] SIM translation stage offset	0	0.01005778216563158			
[s] Observation start time (MET)	192511559.184000	192510587.80037			
Observation start date	2004-02-07T03:24:55	2004-02-07T03:09:47			
[s] Observation end time (MET)	192515506.184000	192516134.58811			
Observation end date	2004-02-07T04:30:42	2004-02-07T04:42:14			
Read mode	TIMED	TIMED			

## 2.3 Aspect



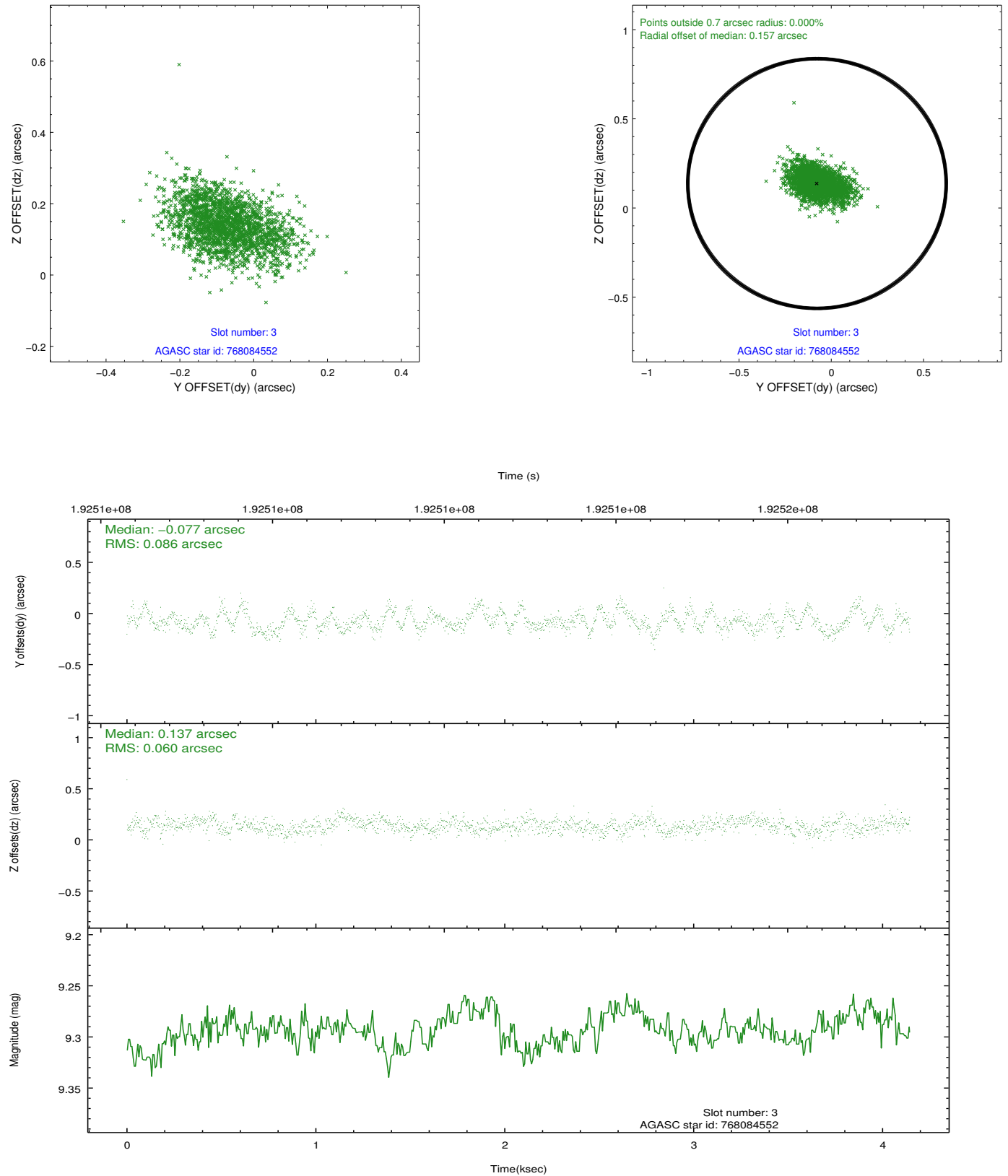


### Slot Statistics

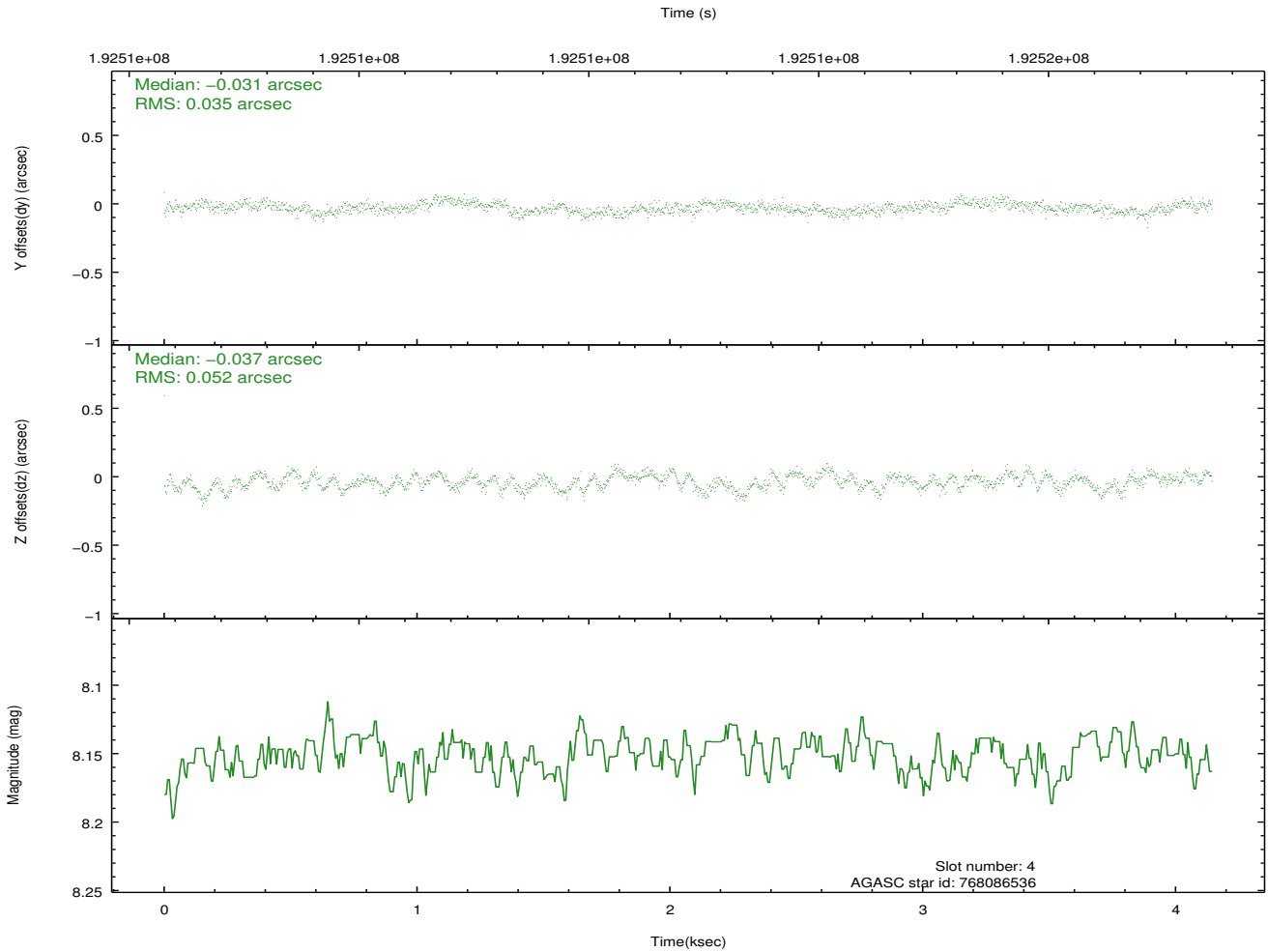
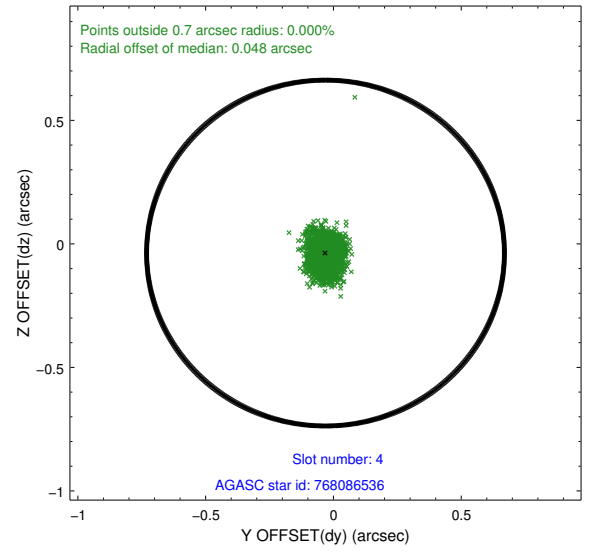
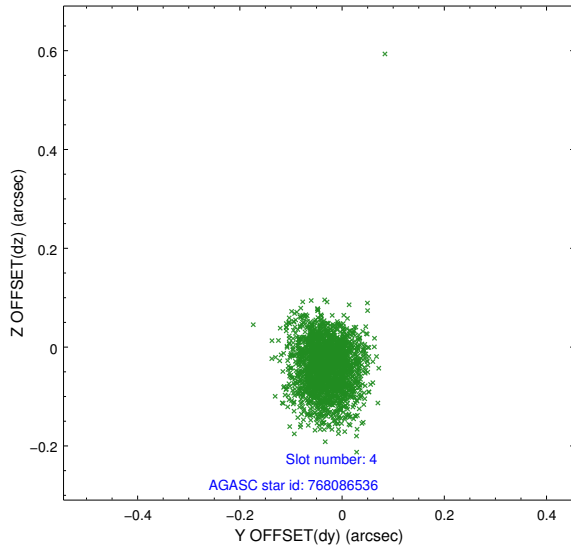
slot	status	id	mag	n_pts	med_dy	med_dz	dr1	dr2	ra	dec	mean_y	mean_z
0	FID	ACIS-S-1	7.18	1012	0.004	-0.051	0.008	0.014	0.000000	0.000000	936.01	-1727.70
1	FID	ACIS-S-4	7.20	1012	0.039	0.038	0.006	0.010	0.000000	0.000000	2154.29	175.00
2	FID	ACIS-S-5	7.23	1011	-0.070	0.026	0.006	0.010	0.000000	0.000000	-1811.01	170.27
3	GUIDE	768084552	9.29	2023	-0.077	0.137	0.109	0.182	39.218067	-17.393680	-2104.09	2219.47
4	GUIDE	768086536	8.15	2023	-0.031	-0.037	0.065	0.107	38.361181	-18.342994	642.41	-1351.33
5	GUIDE	768086560	9.33	2022	0.062	-0.062	0.087	0.139	38.282935	-18.355121	632.70	-1623.79
6	GUIDE	768088928	7.74	2023	-0.036	-0.009	0.062	0.098	38.363271	-17.592112	-2002.54	-801.28
7	GUIDE	768087800	9.36	2021	0.079	-0.032	0.103	0.163	38.060354	-18.469027	880.77	-2450.58

## 2.4 Star Slots

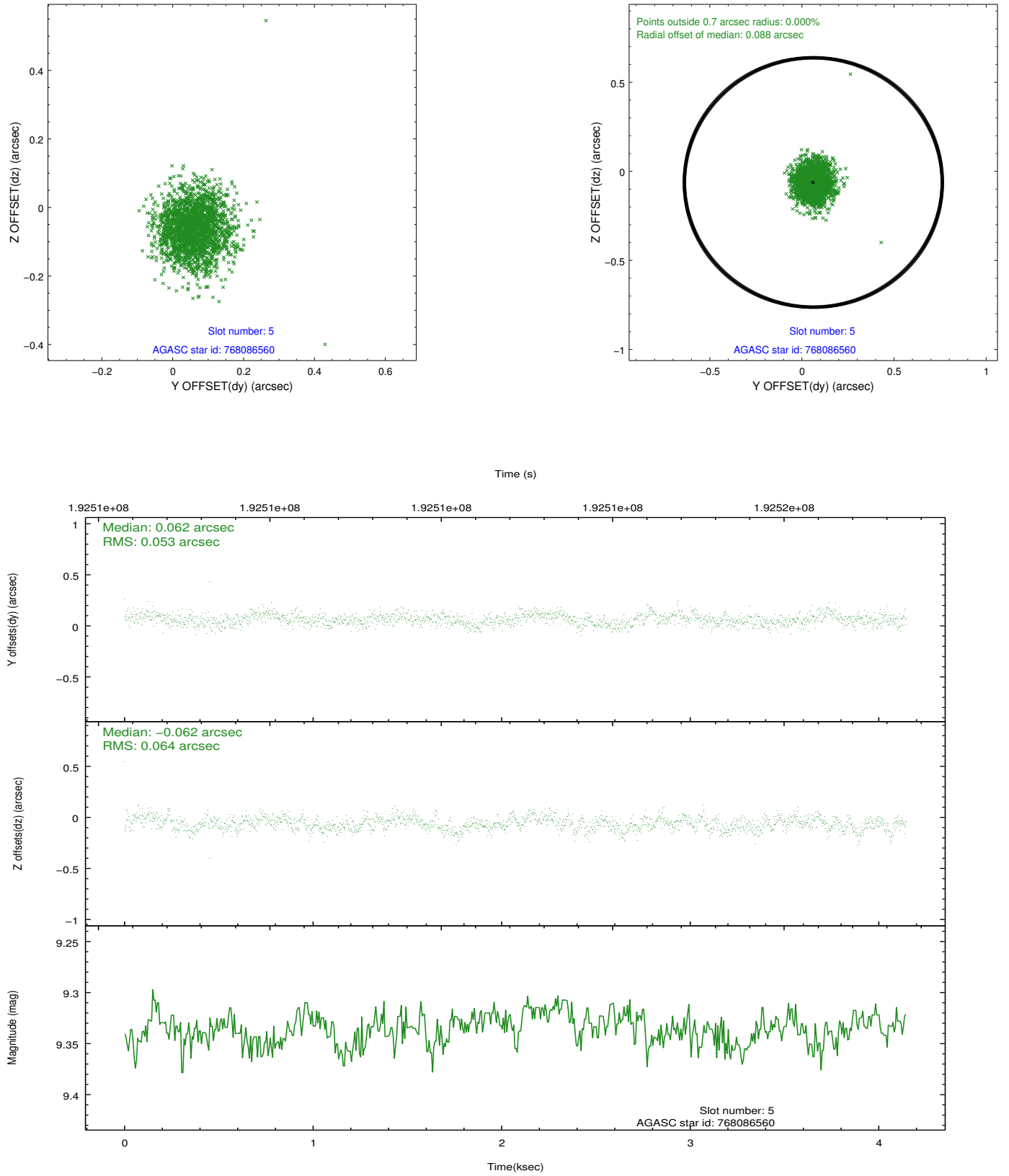
### 2.4.1 Slot 3



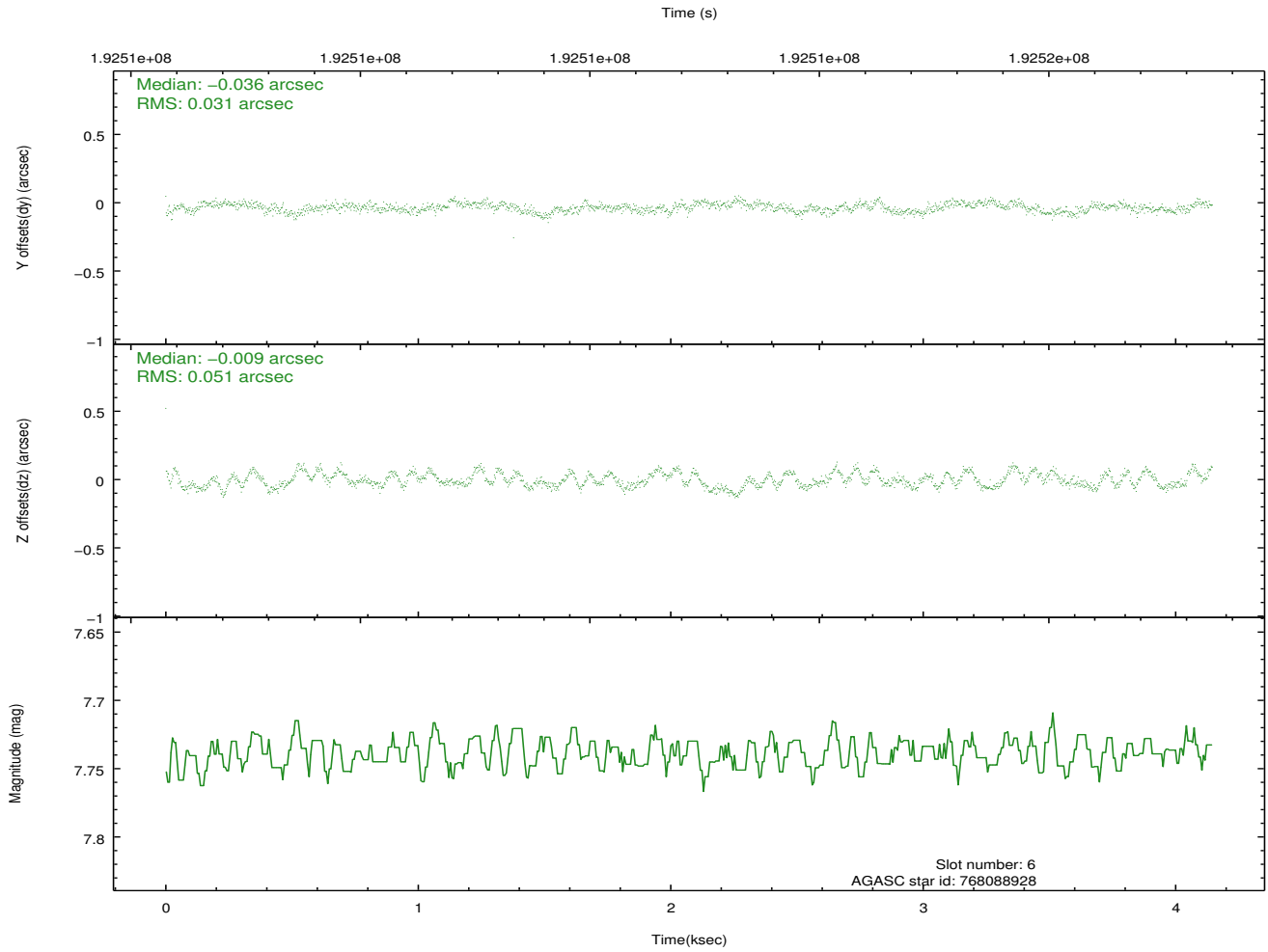
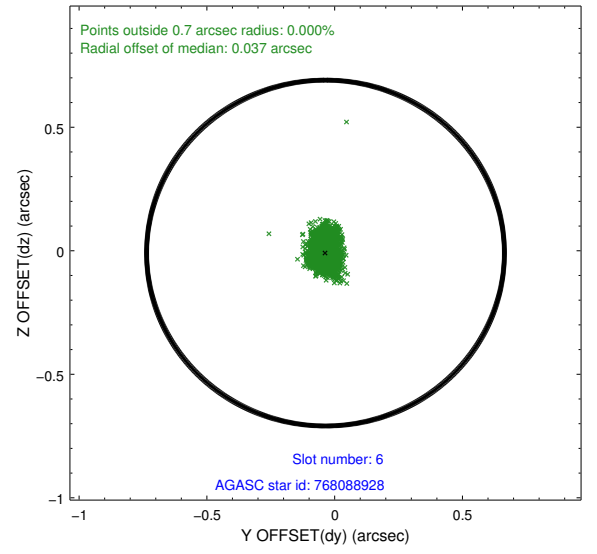
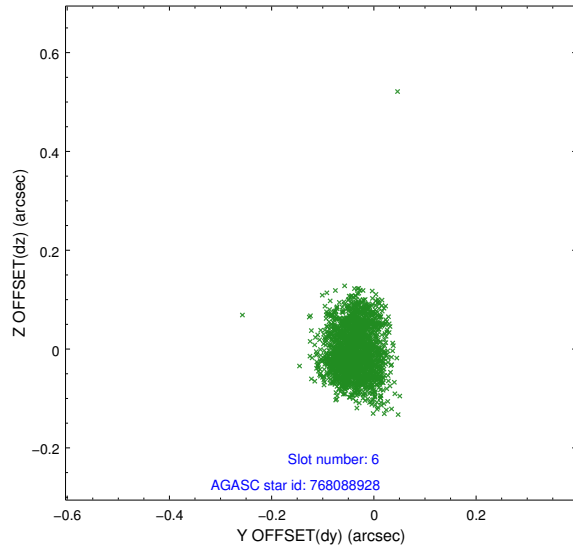
## 2.4.2 Slot 4



### 2.4.3 Slot 5

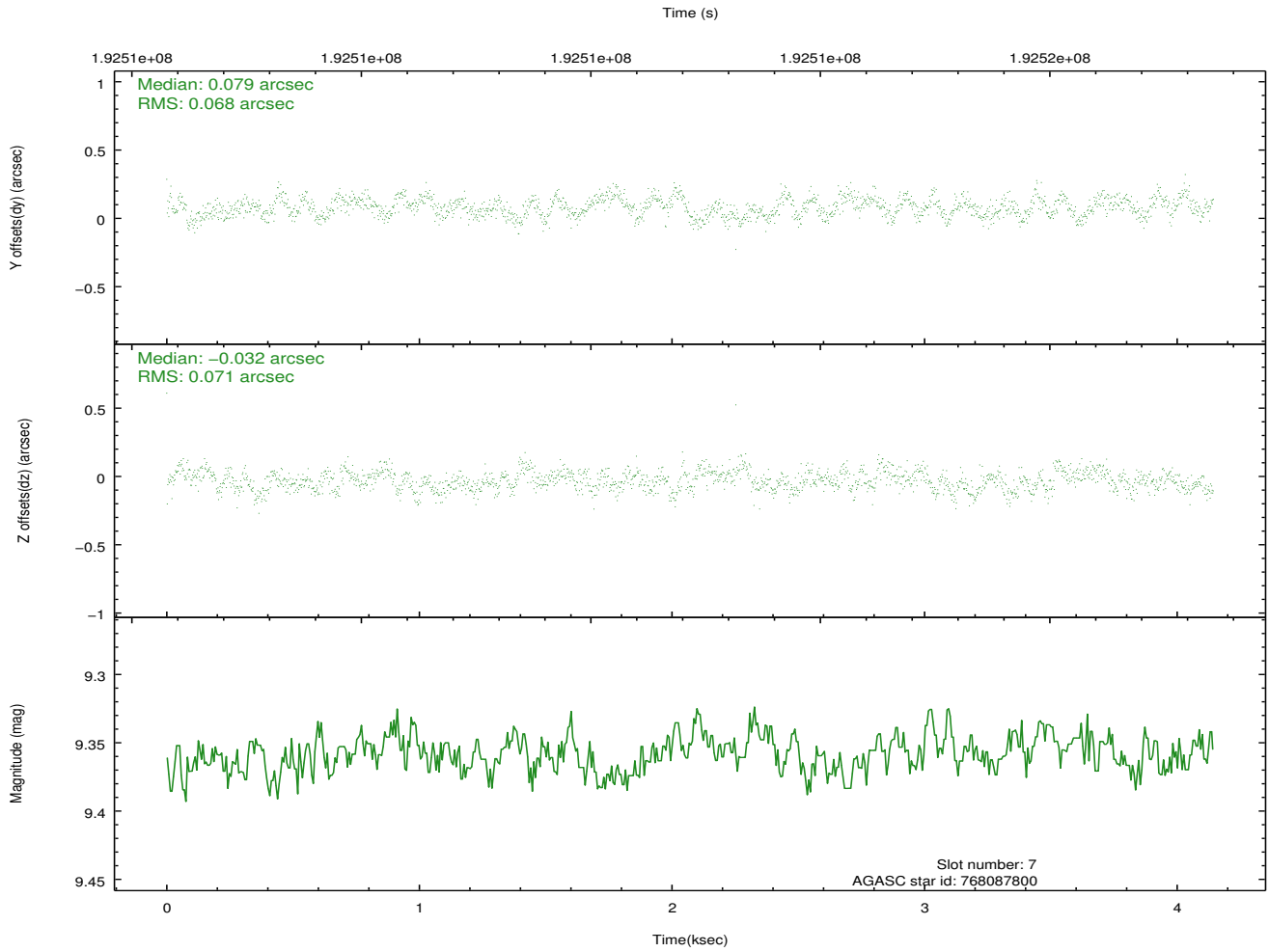
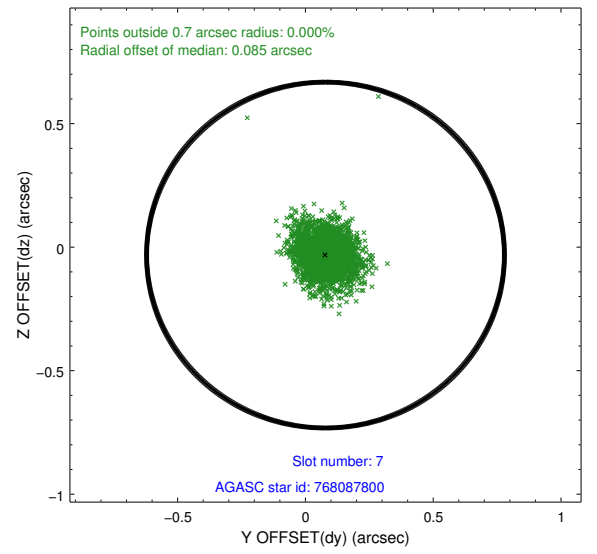
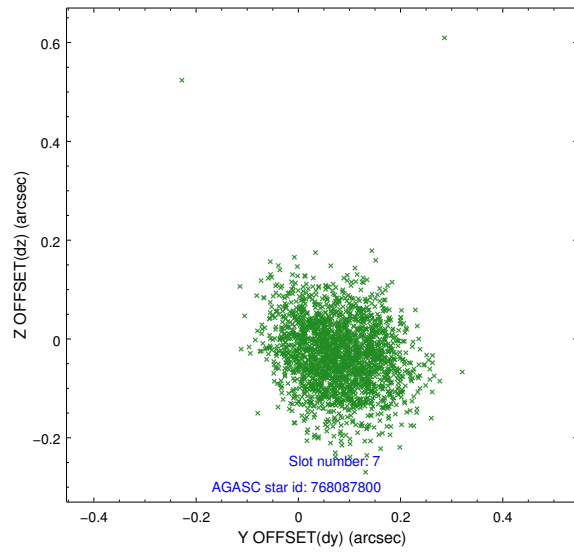


## 2.4.4 Slot 6



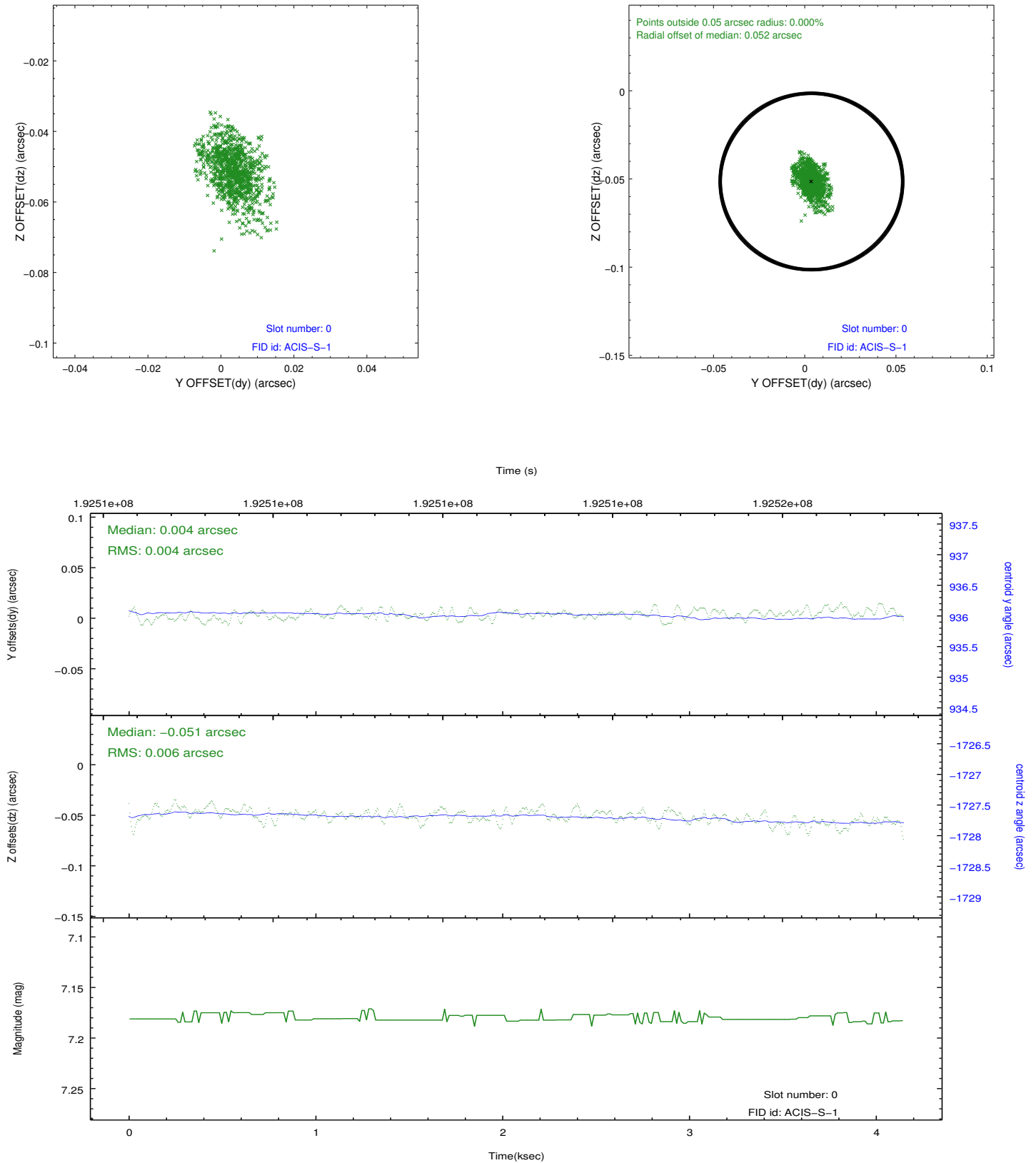


## 2.4.5 Slot 7

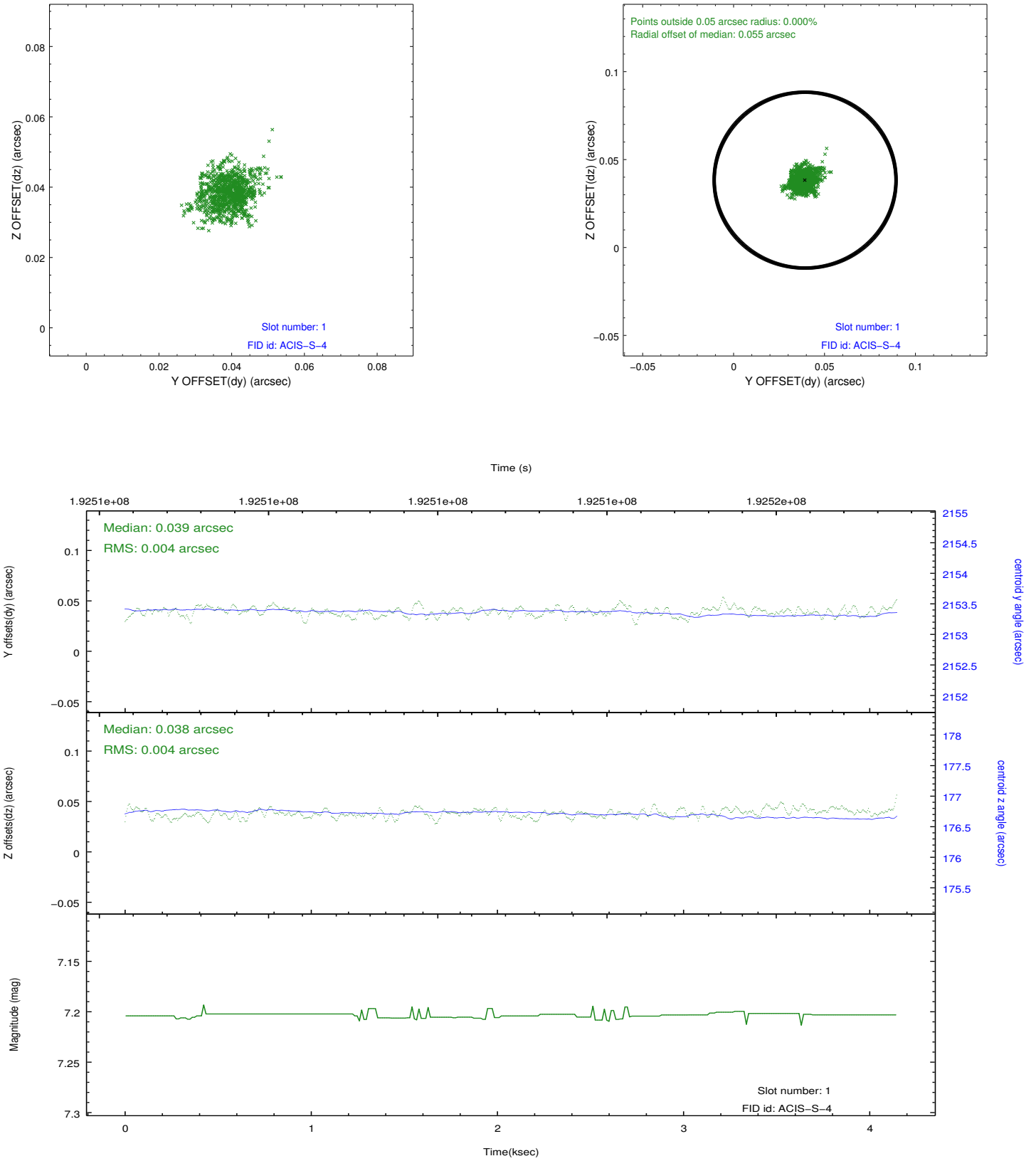


## 2.5 FID Slots

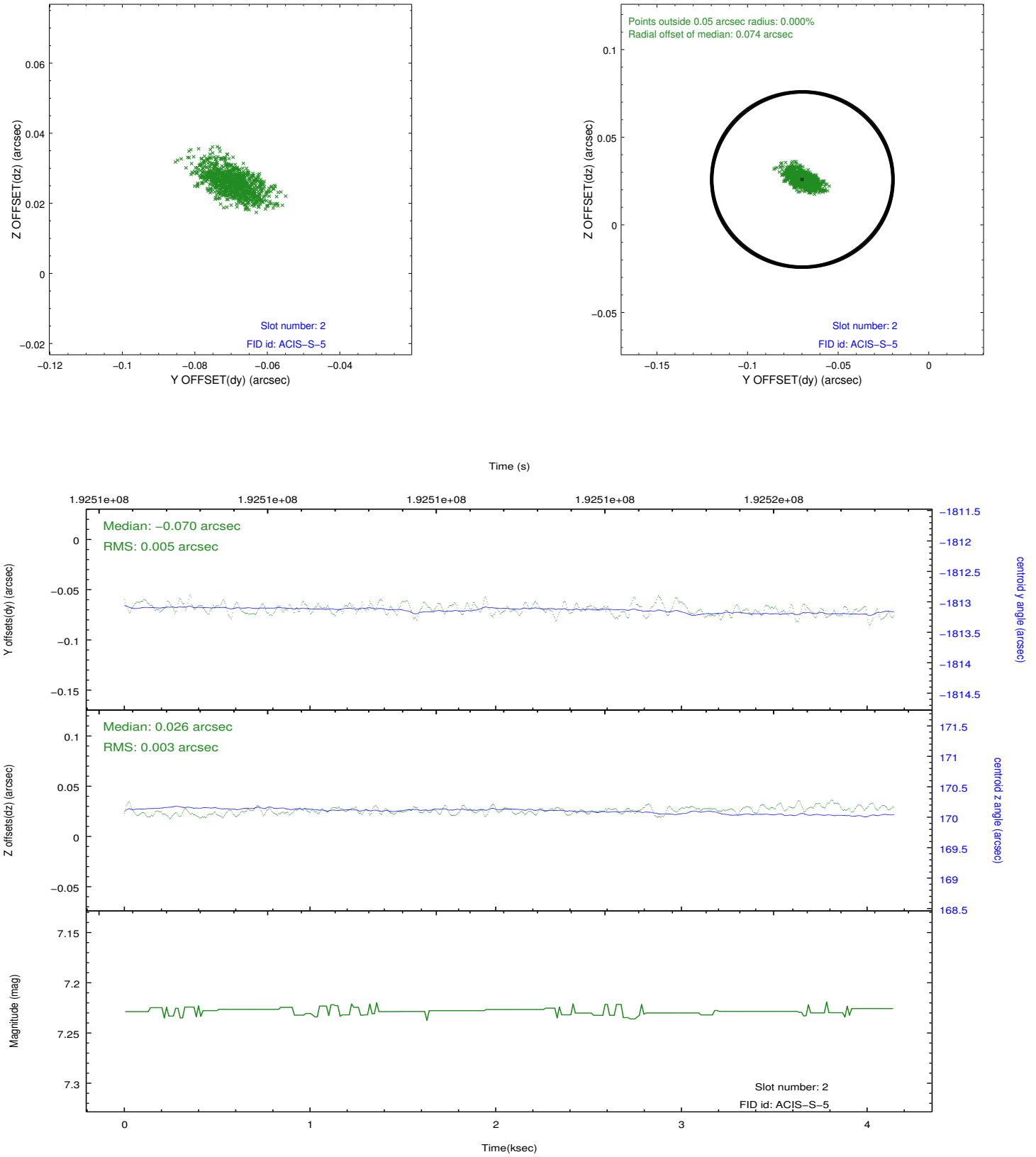
### 2.5.1 Slot 0



## 2.5.2 Slot 1



### 2.5.3 Slot 2



## A Summary

### A.1 Status

V&V Scientist	Jen Lauer
V&V Date (YYYY-MM-DD)	2012.12.10
V&V Edition	1
V&V Disposition and Status	OK
V&V Charge Time	3.913

### A.2 Comments