

# V&V Reference Report

## L2 ASCDS Version : 7.6.7.2

Observation 4766 - L2 Version 001  
Chandra X-Ray Center

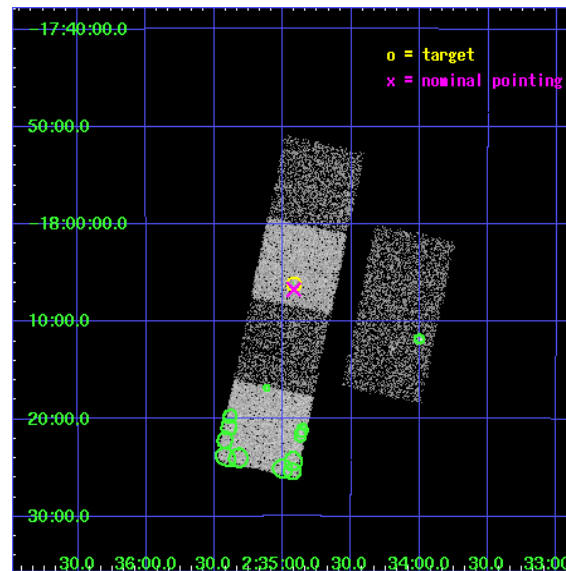
L2 Processing Date : Jun 4 2006

## Contents

<b>1</b>	<b>Front</b>	<b>2</b>
<b>2</b>	<b>OBI</b>	<b>3</b>
2.1	OBI . . . . .	3
2.1.1	Images . . . . .	3
2.1.2	Bias . . . . .	3
2.1.3	Parameters . . . . .	4
2.1.4	Events . . . . .	4
2.2	Compared Parameters . . . . .	5
2.3	Aspect . . . . .	6
2.4	Star Slots . . . . .	9
2.4.1	Slot 3 . . . . .	9
2.4.2	Slot 4 . . . . .	10
2.4.3	Slot 5 . . . . .	11
2.4.4	Slot 6 . . . . .	12
2.4.5	Slot 7 . . . . .	13
2.5	FID Slots . . . . .	14
2.5.1	Slot 0 . . . . .	14
2.5.2	Slot 1 . . . . .	15
2.5.3	Slot 2 . . . . .	16
<b>3</b>	<b>Point Sources</b>	<b>17</b>
<b>A</b>	<b>Summary</b>	<b>18</b>
A.1	Status . . . . .	18
A.2	Comments . . . . .	18

# 1 Front

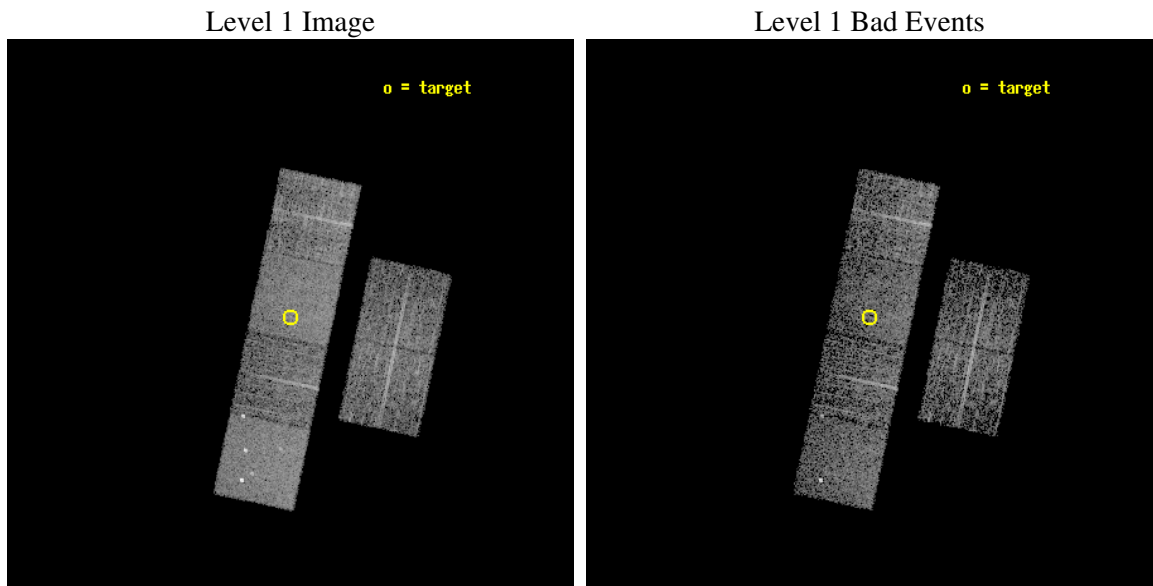
seq_num	700849
obs_id	4766
title	A Chandra Survey of Luminous, Radio-Loud Quasars at High Redshift
observer	Professor Gordon Garmire
object	PMN J0235-1805
dtcycle	0
cycle	P
ra_targ	38.729583
dec_targ	-18.102333
ra_nom	38.729940535309
dec_nom	-18.111946186479
roll_nom	281.91225673442
revision	2
ontime	3910.3999854326
livetime	3860.8841462569
ontime2	3910.3999854326
ontime3	3910.3999854326
ontime5	3910.3999854326
ontime6	3910.3999854326
ontime7	3910.3999854326
ontime8	3910.3999854326
l2events	36838



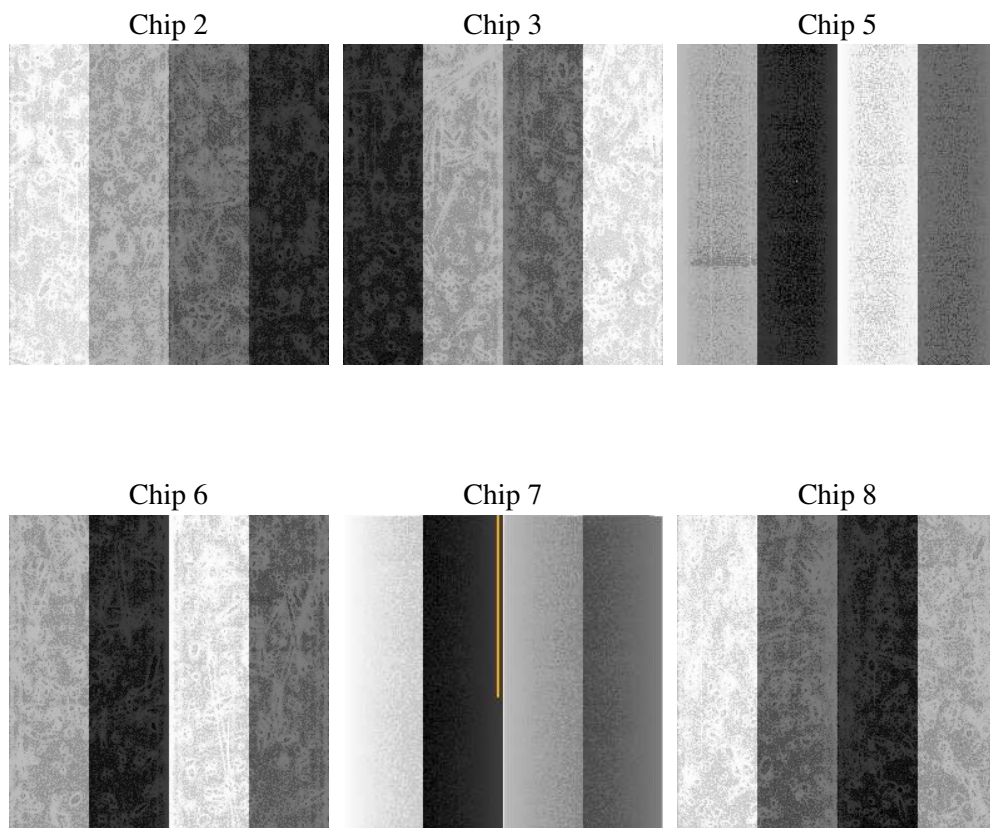
## 2 OBI

### 2.1 OBI

#### 2.1.1 Images



#### 2.1.2 Bias



### 2.1.3 Parameters

obi_num	0
ascdsver	7.6.7.2
caldsver	3.2.2
date	2006-06-04T12:39:44
revision	2

sched_exp_time	3947.000000
ontime	3915.1296812892
ontime2	3915.1296513379
ontime3	3915.1296513379
ontime5	3915.1296812892
ontime6	3915.1296513379
ontime7	3915.1296812892
ontime8	3915.1296513379
l1events	171038

### 2.1.4 Events

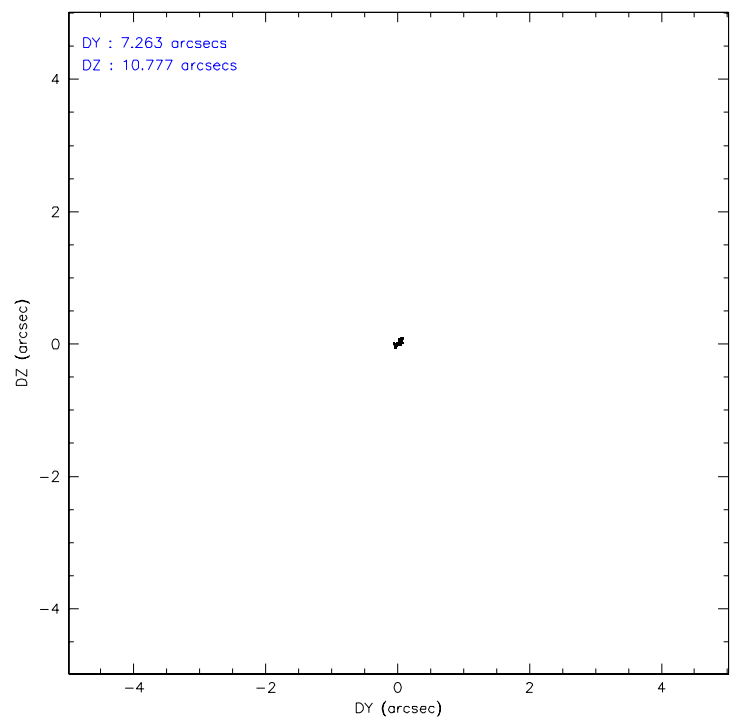
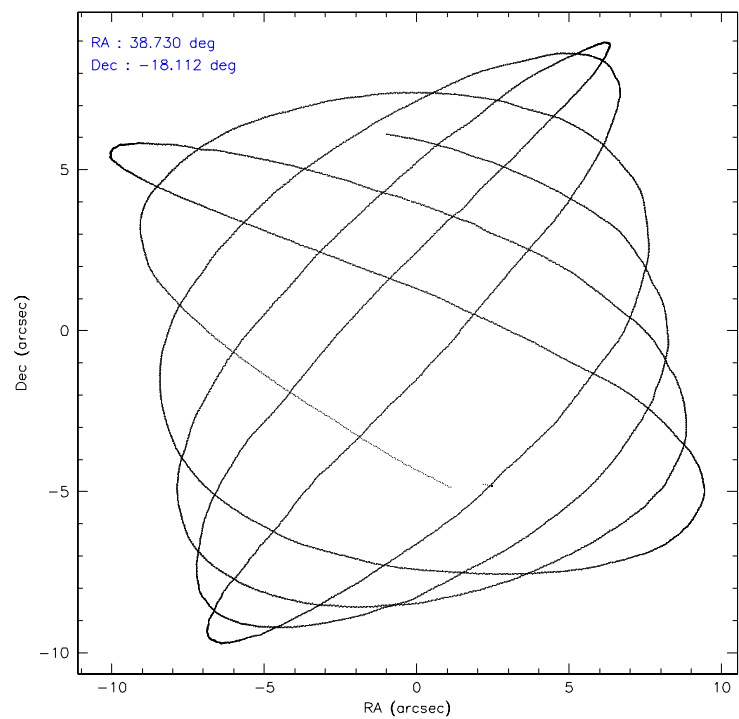
	ccd 2	ccd 3	ccd 5	ccd 6	ccd 7	ccd 8
level 1 events	24561	21282	37786	23161	32410	31838
rejected events	21471	18580	20982	20372	20138	25199
rejected %	87%	87%	55%	87%	62%	79%

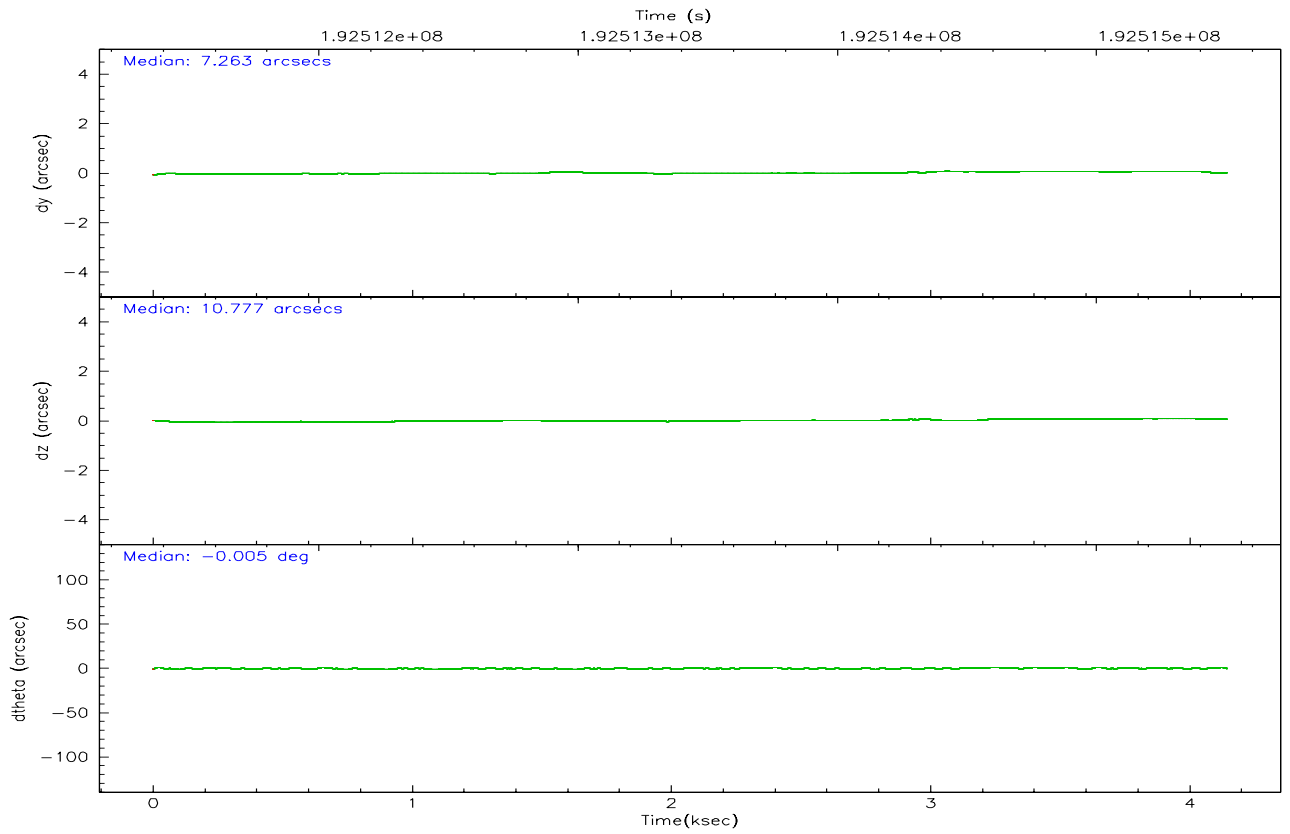
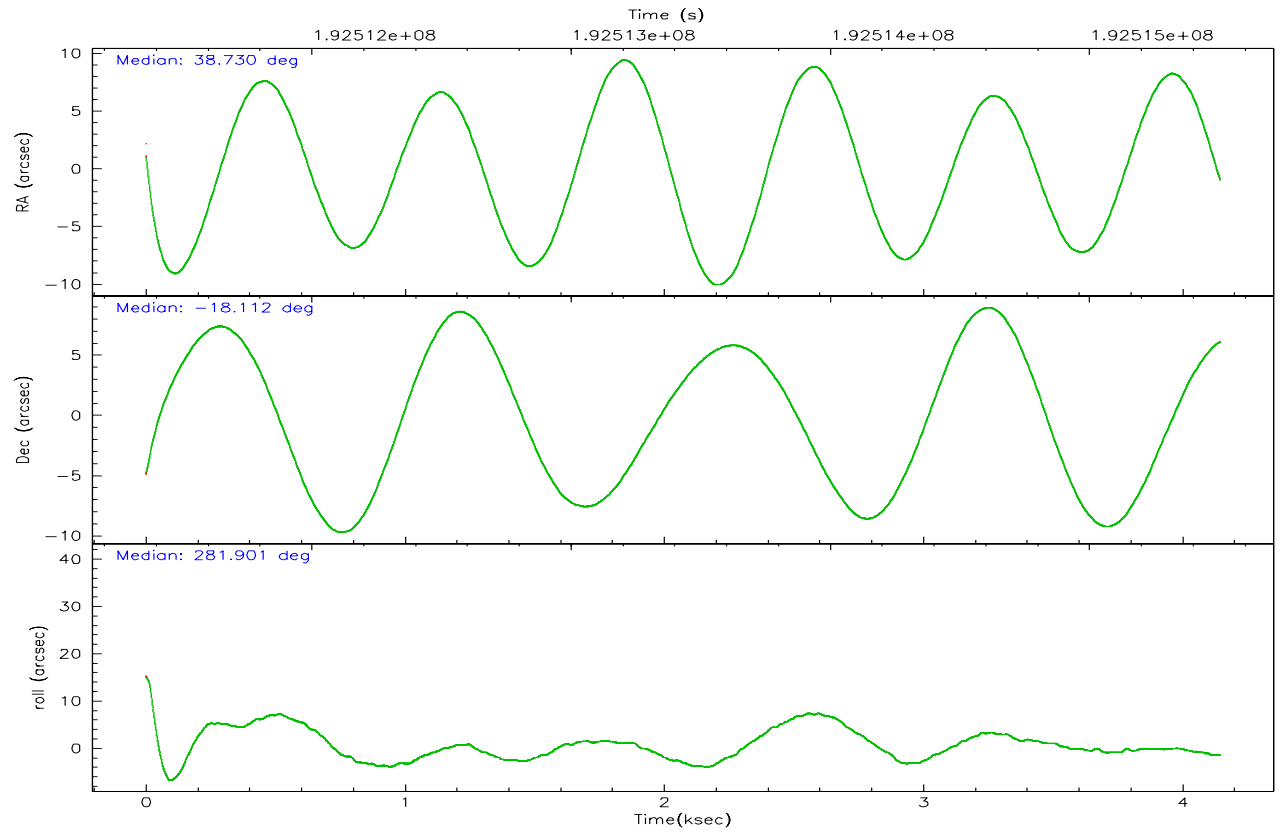
	ccd 2	ccd 3	ccd 5	ccd 6	ccd 7	ccd 8
grade 0 events	1465	1178	1848	1094	759	2033
	5%	5%	4%	4%	2%	6%
grade 1 events	11	14	116	14	19	21
	0%	0%	0%	0%	0%	0%
grade 2 events	611	503	5264	607	3020	1457
	2%	2%	13%	2%	9%	4%
grade 3 events	263	246	374	266	653	723
	1%	1%	0%	1%	2%	2%
grade 4 events	273	287	392	280	632	723
	1%	1%	1%	1%	1%	2%
grade 5 events	978	996	2033	1169	2236	1438
	3%	4%	5%	5%	6%	4%
grade 6 events	478	492	8960	548	7233	1754
	1%	2%	23%	2%	22%	5%
grade 7 events	20482	17566	18799	19183	17858	23689
	83%	82%	49%	82%	55%	74%

## 2.2 Compared Parameters

Parameter	Planned	Actual	Parameter	Planned	Actual
Instrument	ACIS	ACIS	Obspar format version number	6	6
Detector	ACIS-235678	ACIS-235678	Obspar file type	PREDICTED	ACTUAL
Grating	NONE	NONE	Obspar update status	NONE	UPDATED
Data mode	FAINT	FAINT	On-chip summing requested	N	N
Observation mode	POINTING	POINTING	Subarray requested	NONE	NONE
Pointing RA	38.710489	38.72994053530923	Alternating exposures requested	N	N
Pointing Dec	-18.091980	-18.11194618647932	Primary exposure time	0.000000	3.2
Pointing Roll	281.749532	281.9122567344172			
SIM focus pos (mm)	-0.684267	-0.6828225247311905			
SIM defocus (mm)	0	0.001444936568705701			
SIM translation stage pos (mm)	-190.132523	-190.1425803651734			
SIM translation stage offset (mm)	0	0.01005778216563158			
Observation start time	192511559.184000	192510587.80037			
Observation start date	2004-02-07T03:24:55	2004-02-07T03:09:47			
Observation end time	192515506.184000	192516134.58811			
Observation end date	2004-02-07T04:30:42	2004-02-07T04:42:14			
Read mode	TIMED	TIMED			

## 2.3 Aspect





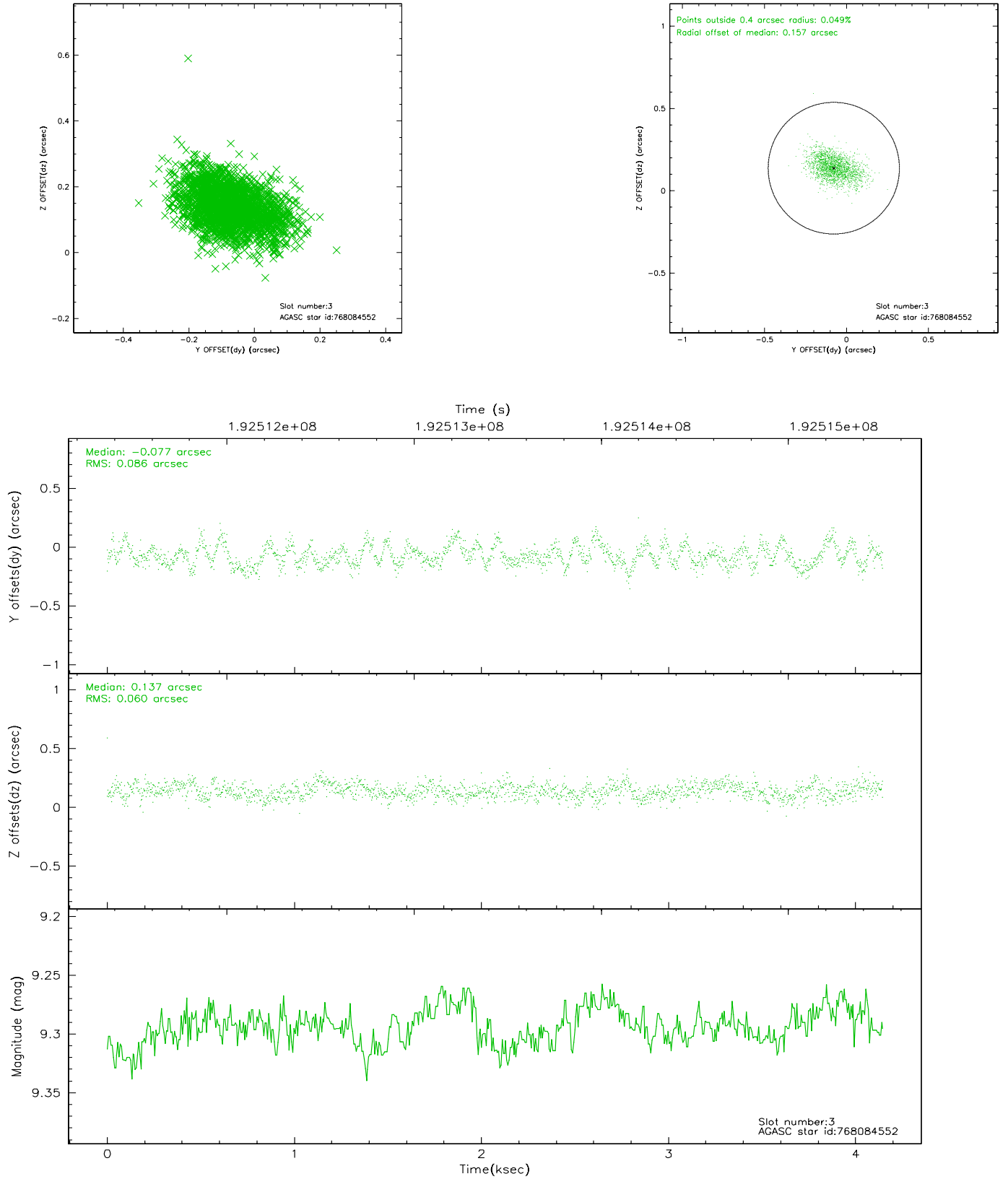
### Slot Statistics

slot	status	id	mag	n_pts	med_dy	med_dz	dr1	dr2	ra	dec	mean_y	mean_z
0	FID	ACIS-S-1	7.18	1012	-0.006	-0.028	0.008	0.014	0.000000	0.000000	935.99	-1727.66
1	FID	ACIS-S-4	7.20	1012	0.007	0.027	0.006	0.010	0.000000	0.000000	2154.25	175.01
2	FID	ACIS-S-5	7.23	1011	-0.028	0.014	0.006	0.010	0.000000	0.000000	-1810.97	170.28
3	GUIDE	768084552	9.29	2023	-0.077	0.137	0.109	0.182	39.218067	-17.393680	-2104.09	2219.47
4	GUIDE	768086536	8.15	2023	-0.031	-0.037	0.065	0.107	38.361181	-18.342994	642.41	-1351.33
5	GUIDE	768086560	9.33	2022	0.062	-0.062	0.087	0.139	38.282935	-18.355121	632.70	-1623.79
6	GUIDE	768088928	7.74	2023	-0.036	-0.009	0.062	0.098	38.363271	-17.592112	-2002.54	-801.28
7	GUIDE	768087800	9.36	2021	0.079	-0.032	0.103	0.163	38.060354	-18.469027	880.77	-2450.58

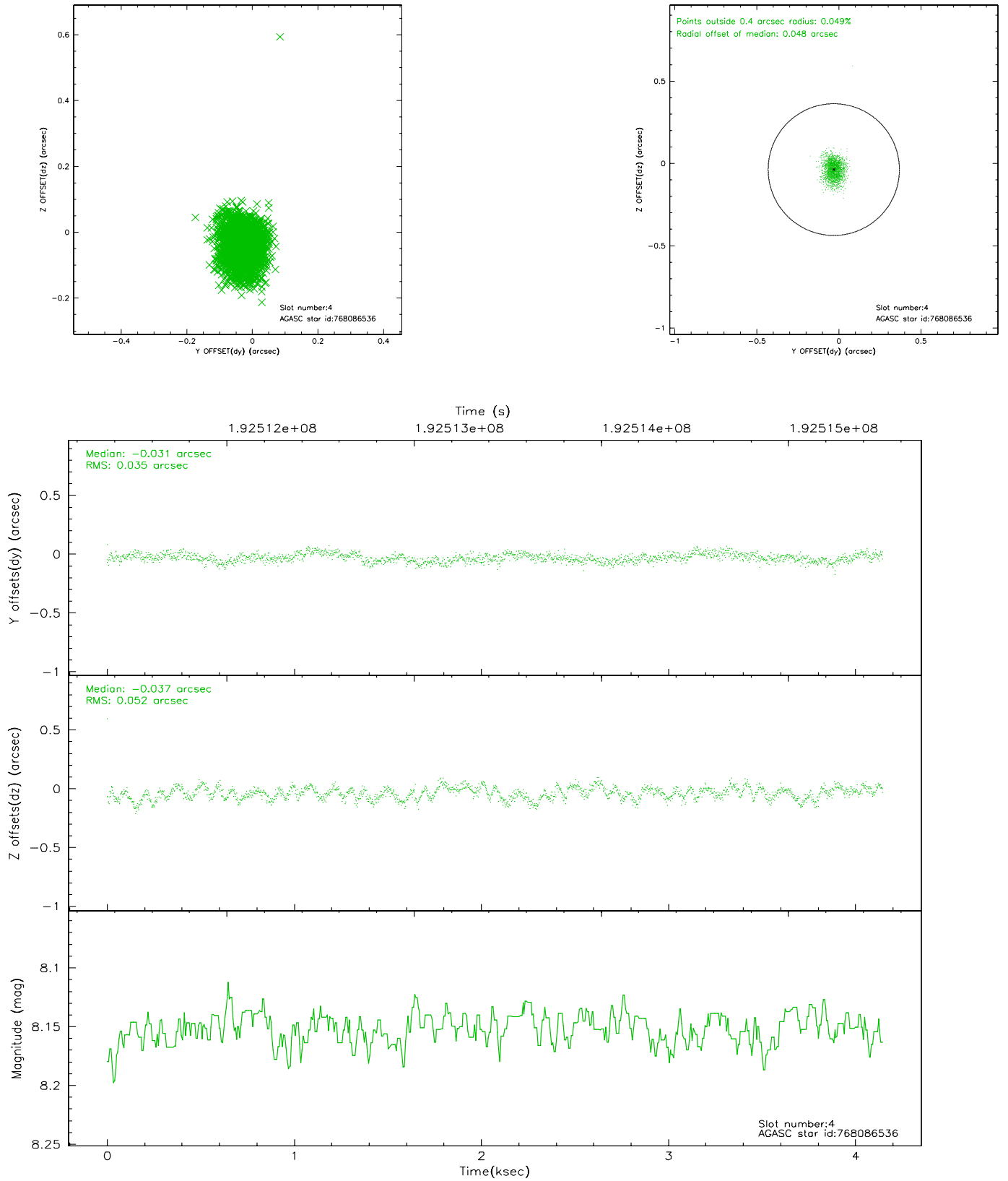


## 2.4 Star Slots

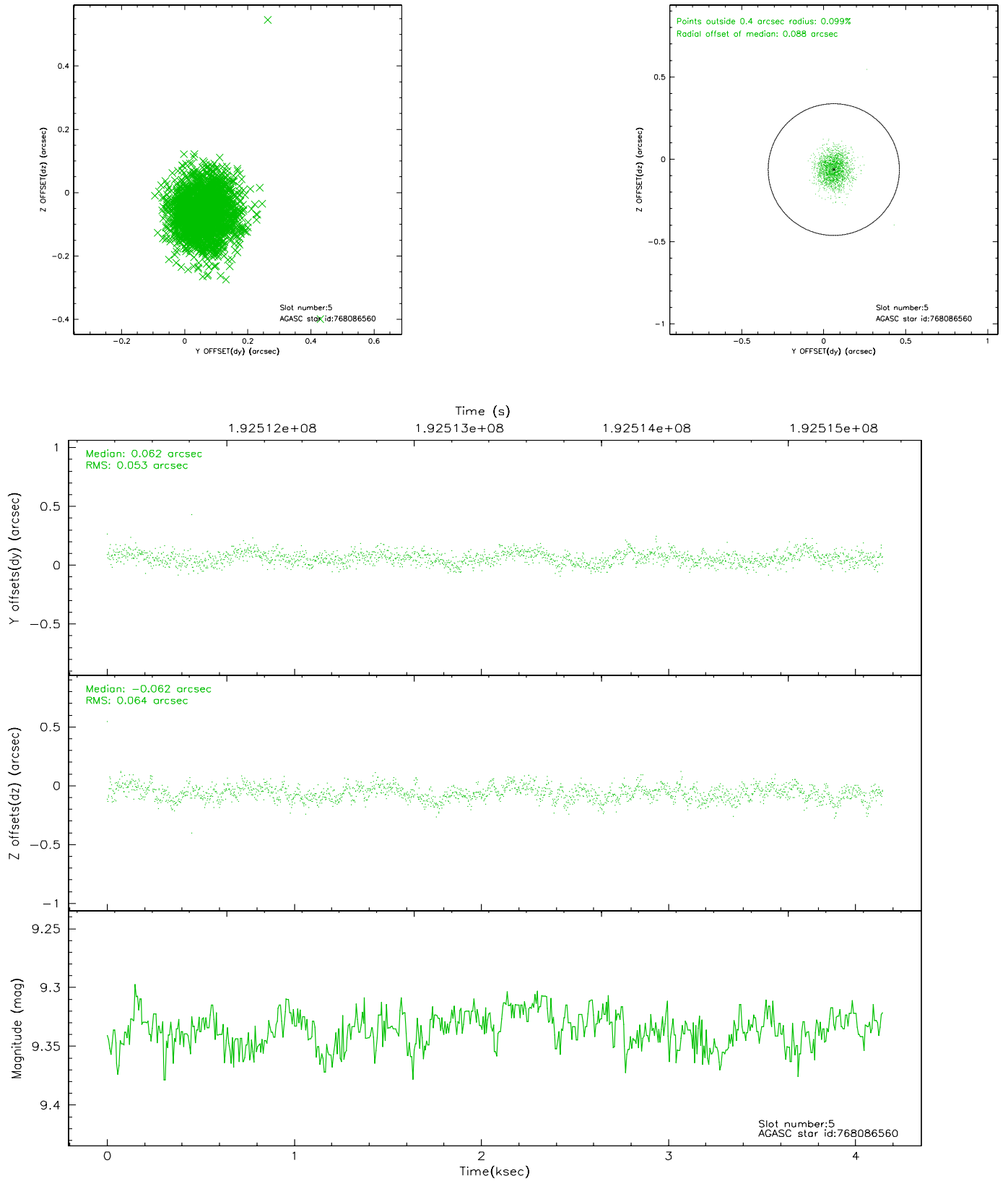
### 2.4.1 Slot 3



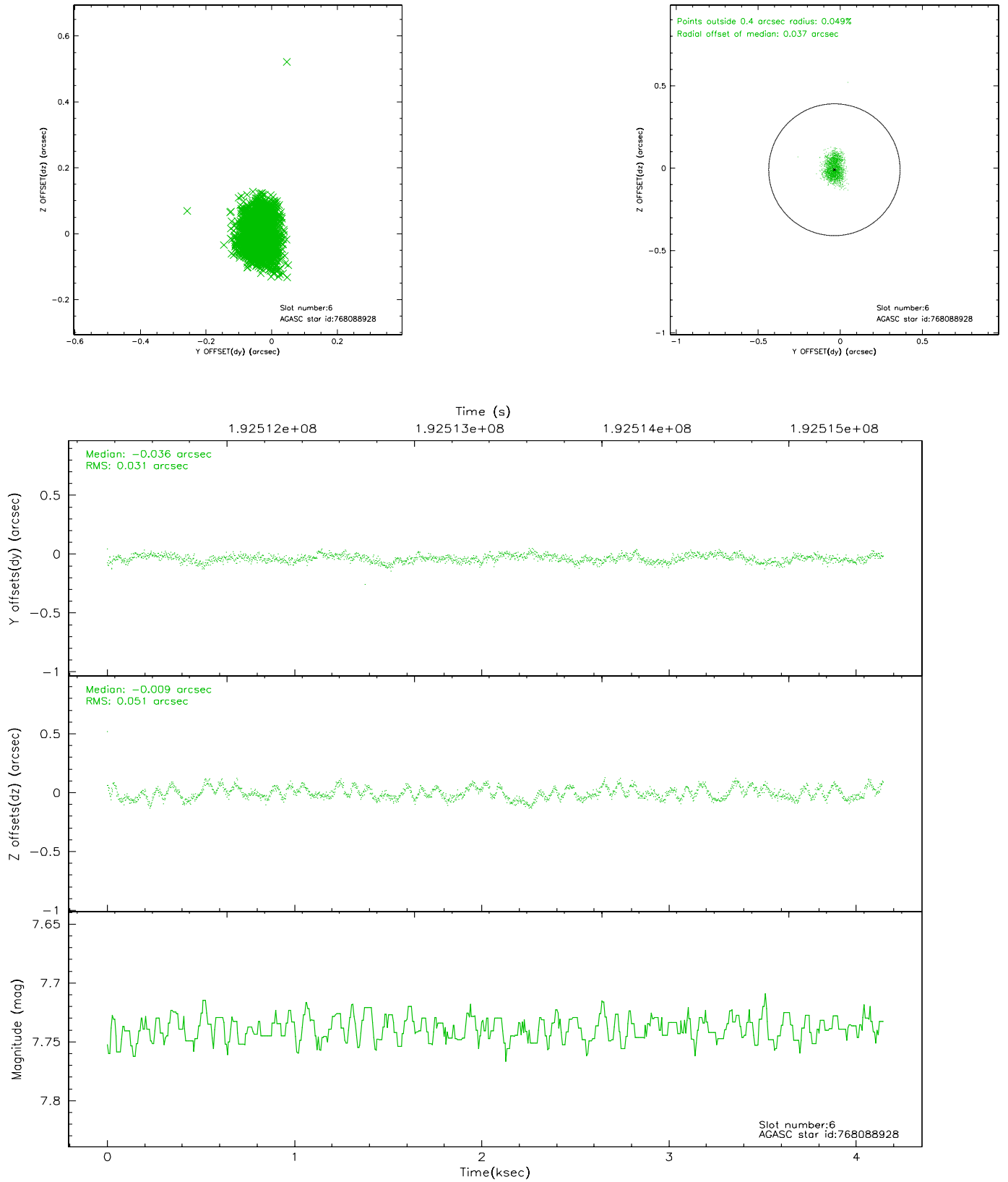
## 2.4.2 Slot 4



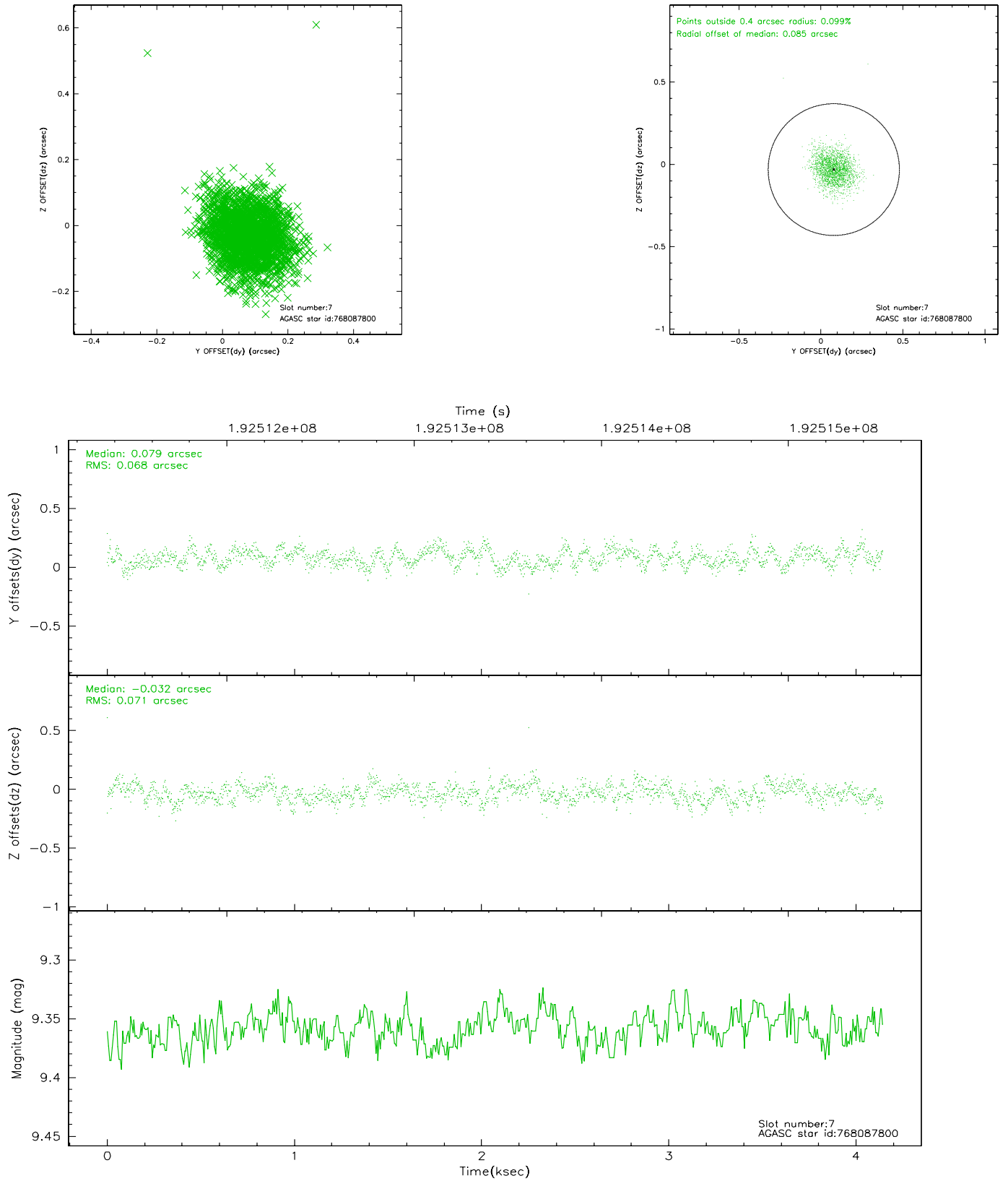
### 2.4.3 Slot 5



## 2.4.4 Slot 6

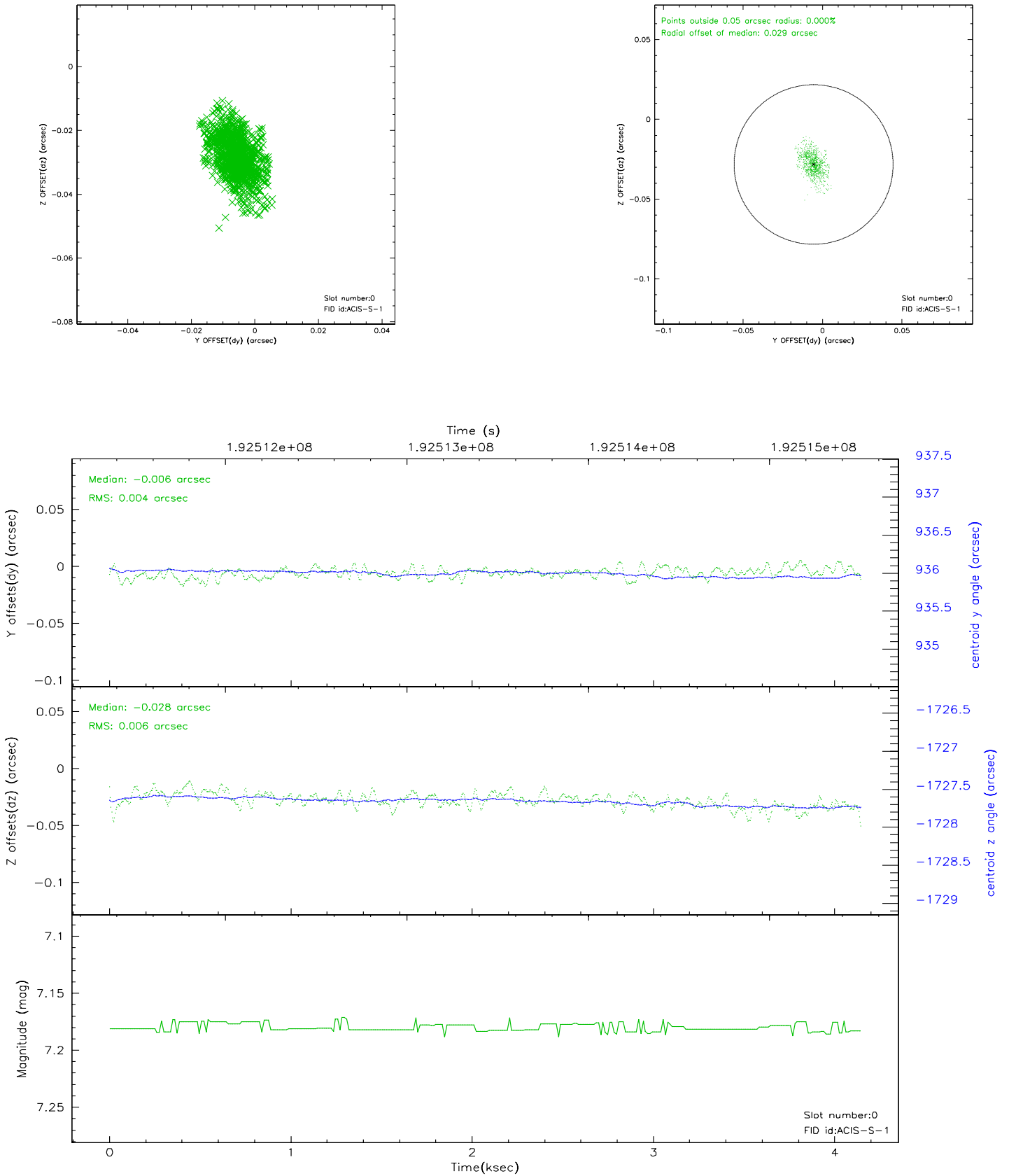


## 2.4.5 Slot 7

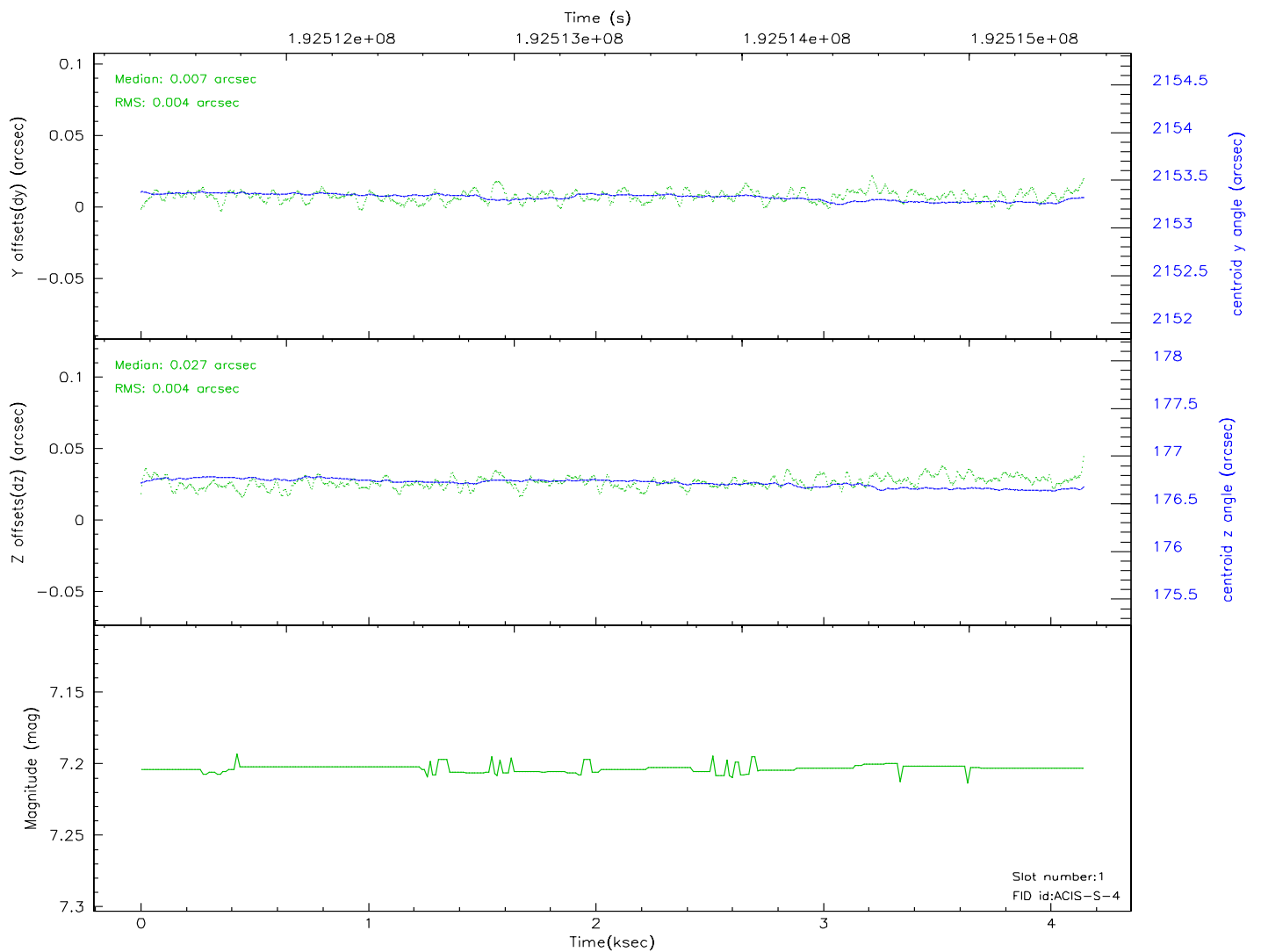
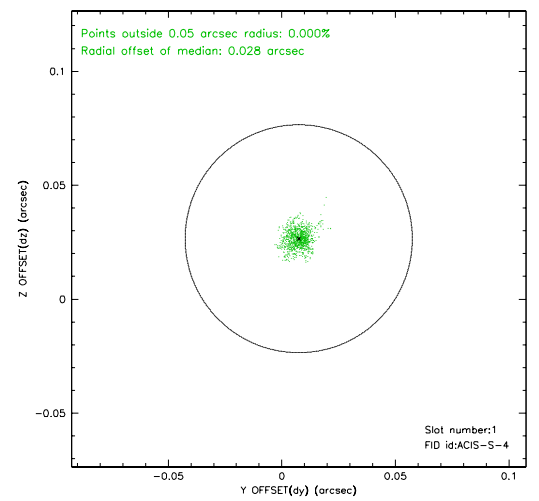
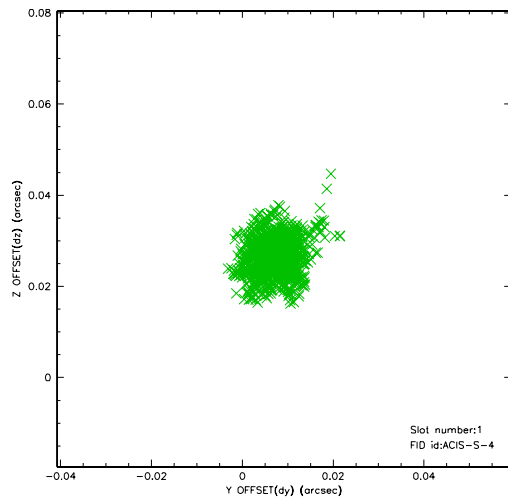


## 2.5 FID Slots

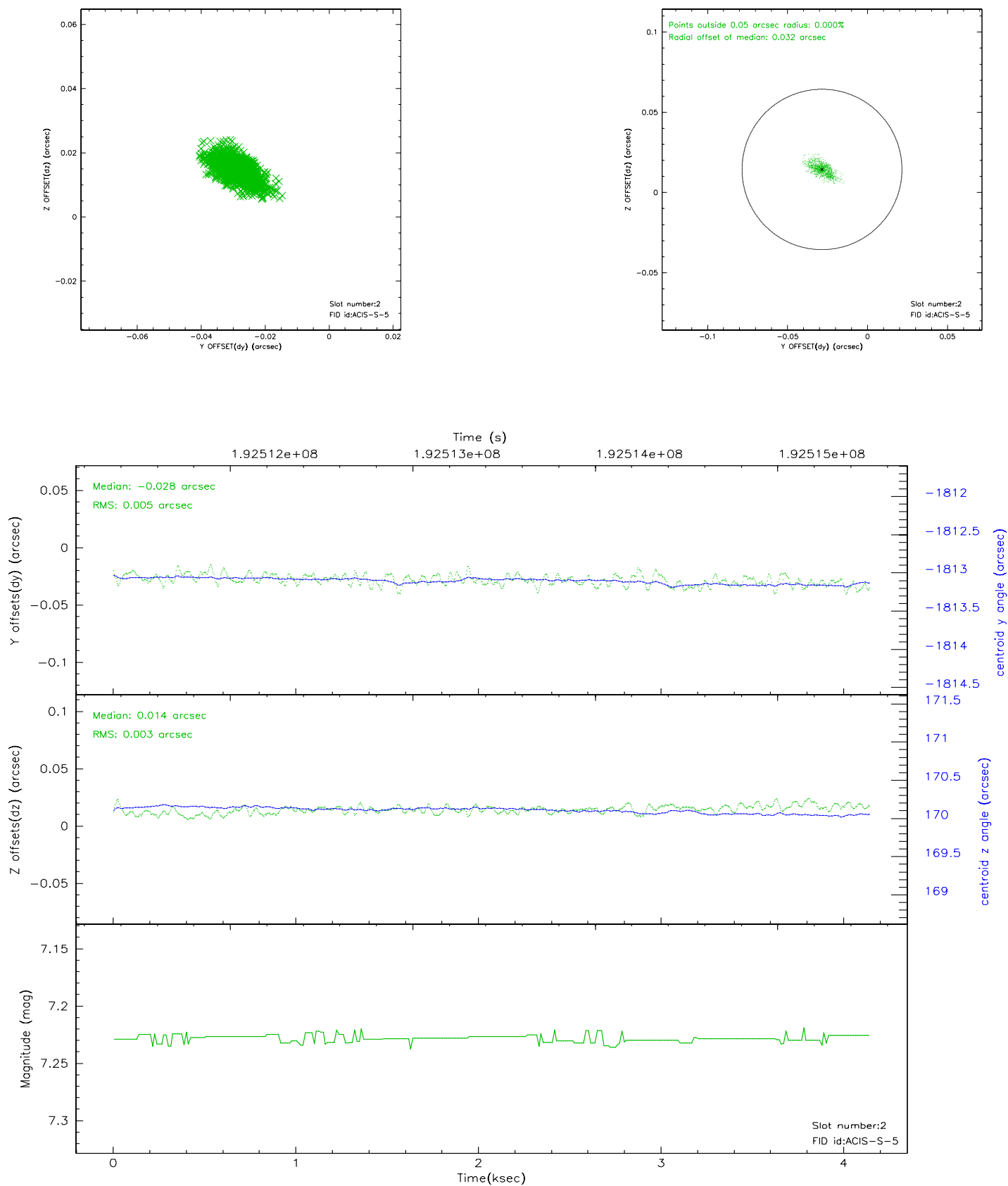
### 2.5.1 Slot 0



## 2.5.2 Slot 1

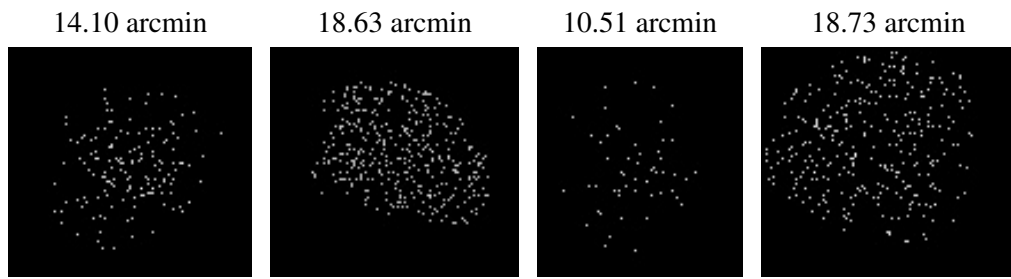


### 2.5.3 Slot 2





### 3 Point Sources



## A Summary

### A.1 Status

V&V Scientist	Beth Sundheim
V&V Date (YYYY-MM-DD)	2006.06.05
V&V Edition	1
V&V Disposition and Status	OK
V&V Charge Time	3.913

### A.2 Comments