

# V&V Reference Report

## L2 ASCDS Version : 7.6.7.2

Observation 4596 - L2 Version 001  
Chandra X-Ray Center

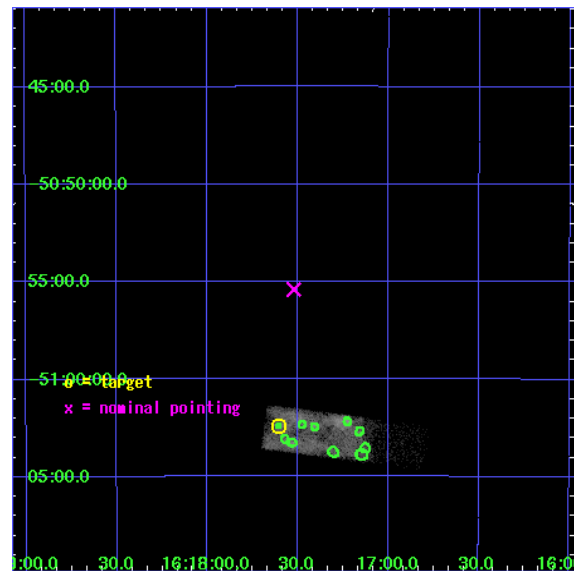
L2 Processing Date : Jun 7 2006

## Contents

<b>1</b>	<b>Front</b>	<b>2</b>
<b>2</b>	<b>OBI</b>	<b>3</b>
2.1	OBI . . . . .	3
2.1.1	Images . . . . .	3
2.1.2	Bias . . . . .	3
2.1.3	Parameters . . . . .	4
2.1.4	Events . . . . .	4
2.2	Compared Parameters . . . . .	5
2.3	Aspect . . . . .	6
2.4	Star Slots . . . . .	9
2.4.1	Slot 3 . . . . .	9
2.4.2	Slot 4 . . . . .	10
2.4.3	Slot 5 . . . . .	11
2.4.4	Slot 6 . . . . .	12
2.4.5	Slot 7 . . . . .	13
2.5	FID Slots . . . . .	14
2.5.1	Slot 0 . . . . .	14
2.5.2	Slot 1 . . . . .	15
2.5.3	Slot 2 . . . . .	16
<b>3</b>	<b>Point Sources</b>	<b>17</b>
<b>A</b>	<b>Summary</b>	<b>18</b>
A.1	Status . . . . .	18
A.2	Comments . . . . .	18

# 1 Front

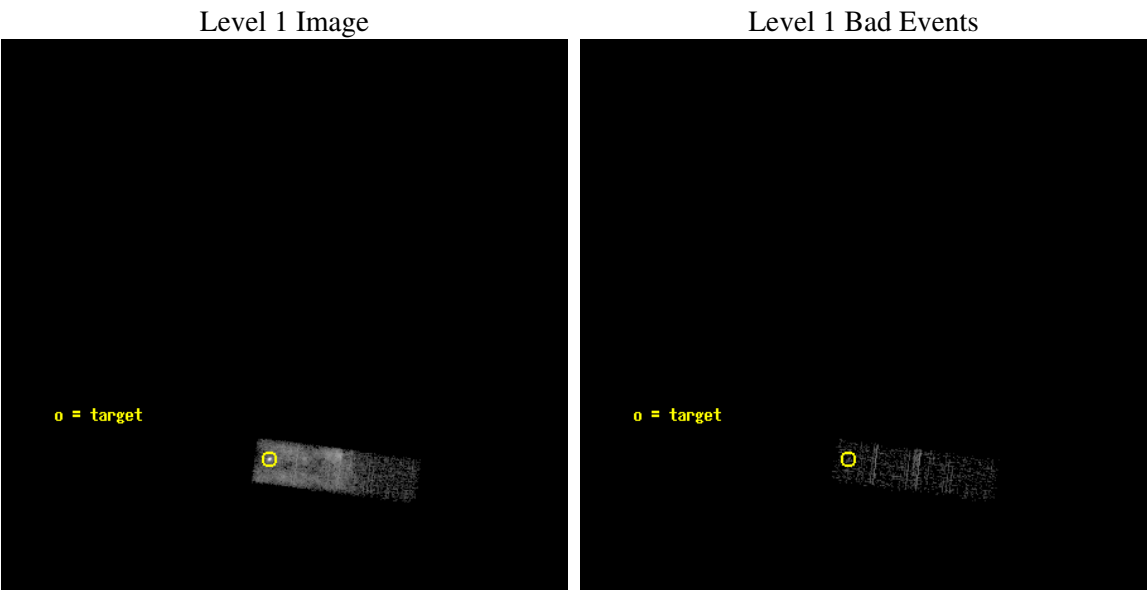
seq_num	500421
obs_id	4596
title	Observation of SNR RCW103
observer	Professor Gordon Garmire
object	RCW103
dtcycle	0
cycle	P
ra_targ	244.40125
dec_targ	-51.040278
ra_nom	244.38050493896
dec_nom	-50.923408758233
roll_nom	97.481197451693
revision	2
ontime	5164.8000769615
livetime	4912.7747331509
ontime3	5164.8000769615
l2events	21410



# 2 OBI

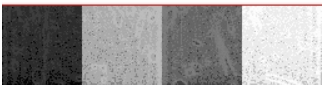
## 2.1 OBI

### 2.1.1 Images



### 2.1.2 Bias

Chip 3



### 2.1.3 Parameters

obi_num	0
ascdsver	7.6.7.2
caldbver	3.2.2
date	2006-06-07T04:55:46
revision	2

sched_exp_time	5000.000000
ontime	5893.0953974128
ontime3	5893.0953974128
l1events	31192

### 2.1.4 Events

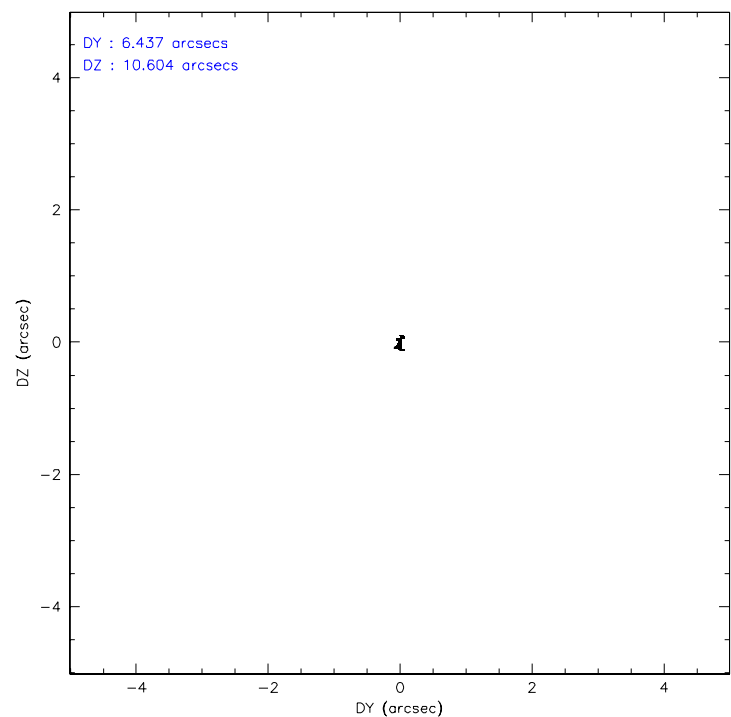
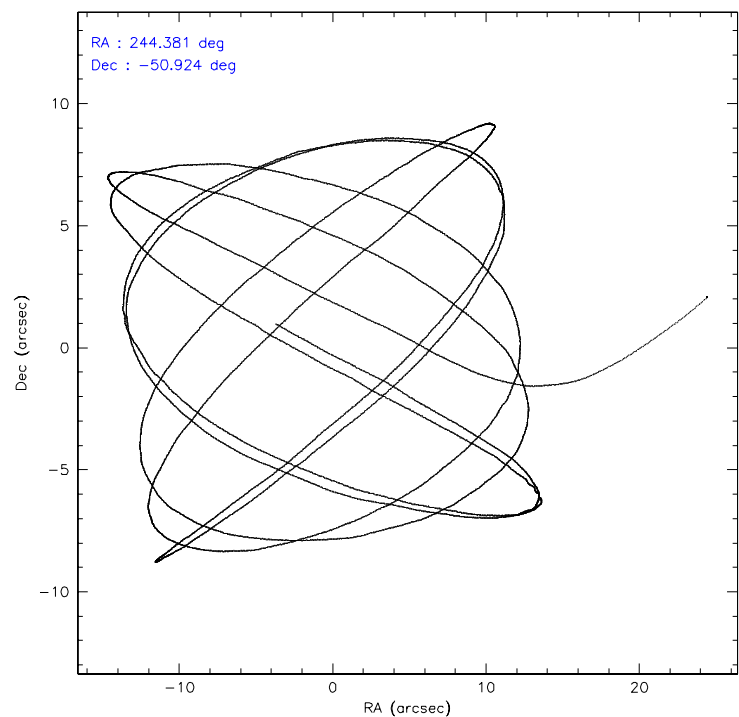
	<b>ccd 3</b>
level 1 events	31192
rejected events	9158
rejected %	29%

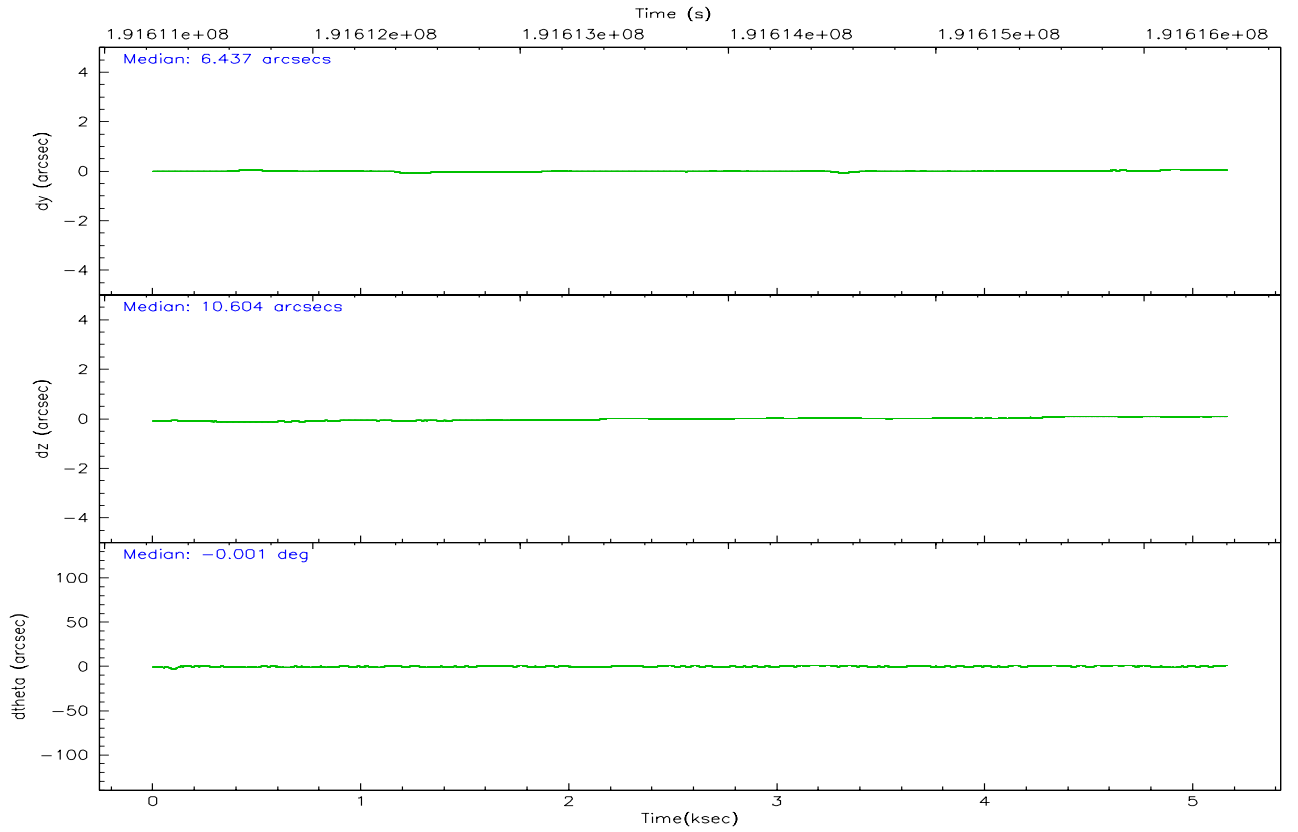
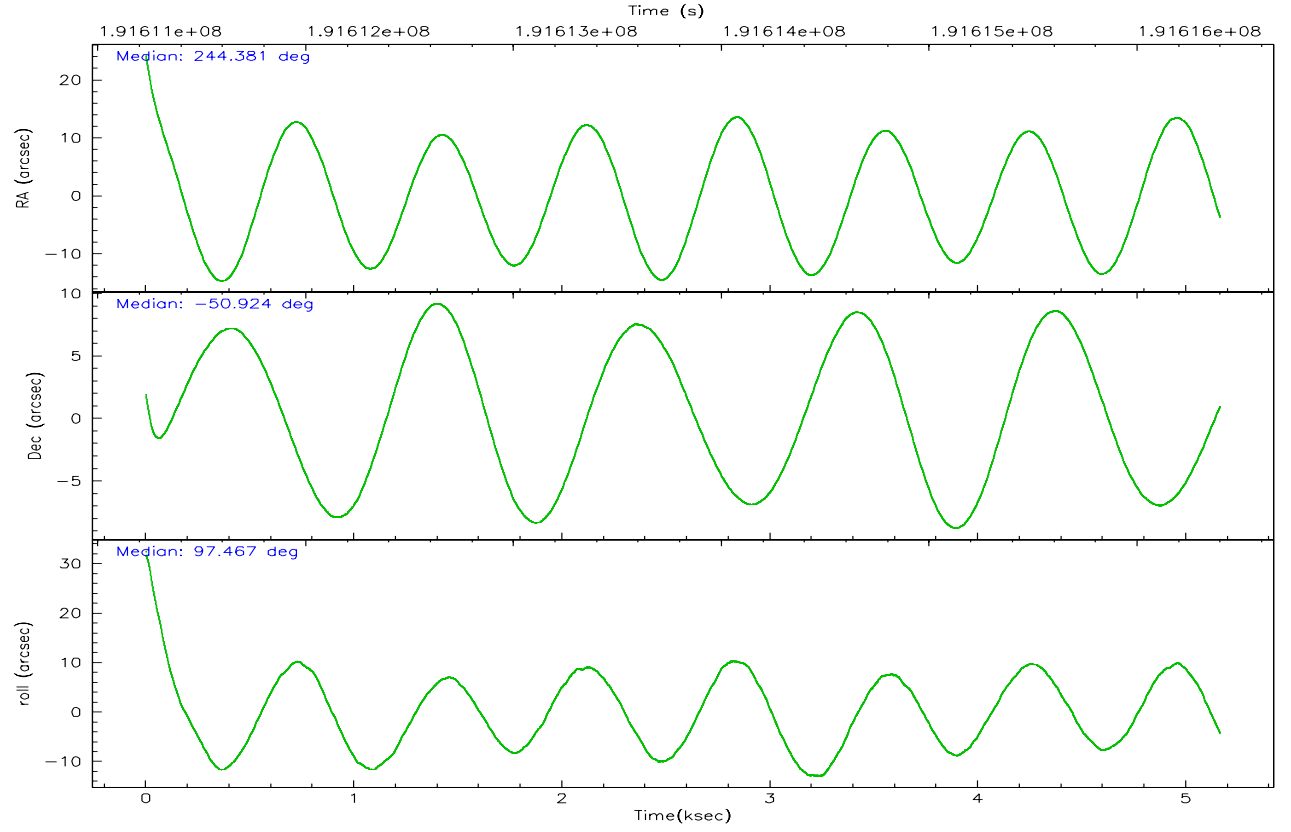
	<b>ccd 3</b>
grade 0 events	19179
	61%
grade 1 events	33
	0%
grade 2 events	2015
	6%
grade 3 events	650
	2%
grade 4 events	645
	2%
grade 5 events	127
	0%
grade 6 events	350
	1%
grade 7 events	8193
	26%

## 2.2 Compared Parameters

Parameter	Planned	Actual	Parameter	Planned	Actual
Instrument	ACIS	ACIS	Obspar format version number	6	6
Detector	ACIS-3	ACIS-3	Obspar file type	PREDICTED	ACTUAL
Grating	NONE	NONE	Obspar update status	NONE	UPDATED
Data mode	VFAINT	VFAINT	On-chip summing requested	N	N
Observation mode	POINTING	POINTING	Subarray requested	CUSTOM	1/4
Pointing RA	244.406980	244.3805049389613	Subarray start row	1	1
Pointing Dec	-50.945044	-50.92340875823303	Subarray row count	256	256
Pointing Roll	97.293052	97.48119745169342	Alternating exposures requested	N	N
SIM focus pos (mm)	-0.782348	-0.7809083437167272	Primary exposure time	0.000000	0.8
SIM defocus (mm)	0	0.001439871863259334			
SIM translation stage pos (mm)	-233.592463	-233.5874344608287			
SIM translation stage offset (mm)	0	-0.005018542100998502			
Observation start time	191611398.184000	191610406.11103			
Observation start date	2004-01-27T17:22:14	2004-01-27T17:06:46			
Observation end time	191616398.184000	191617137.28632			
Observation end date	2004-01-27T18:45:34	2004-01-27T18:58:57			
Read mode	TIMED	TIMED			

2.3 Aspect





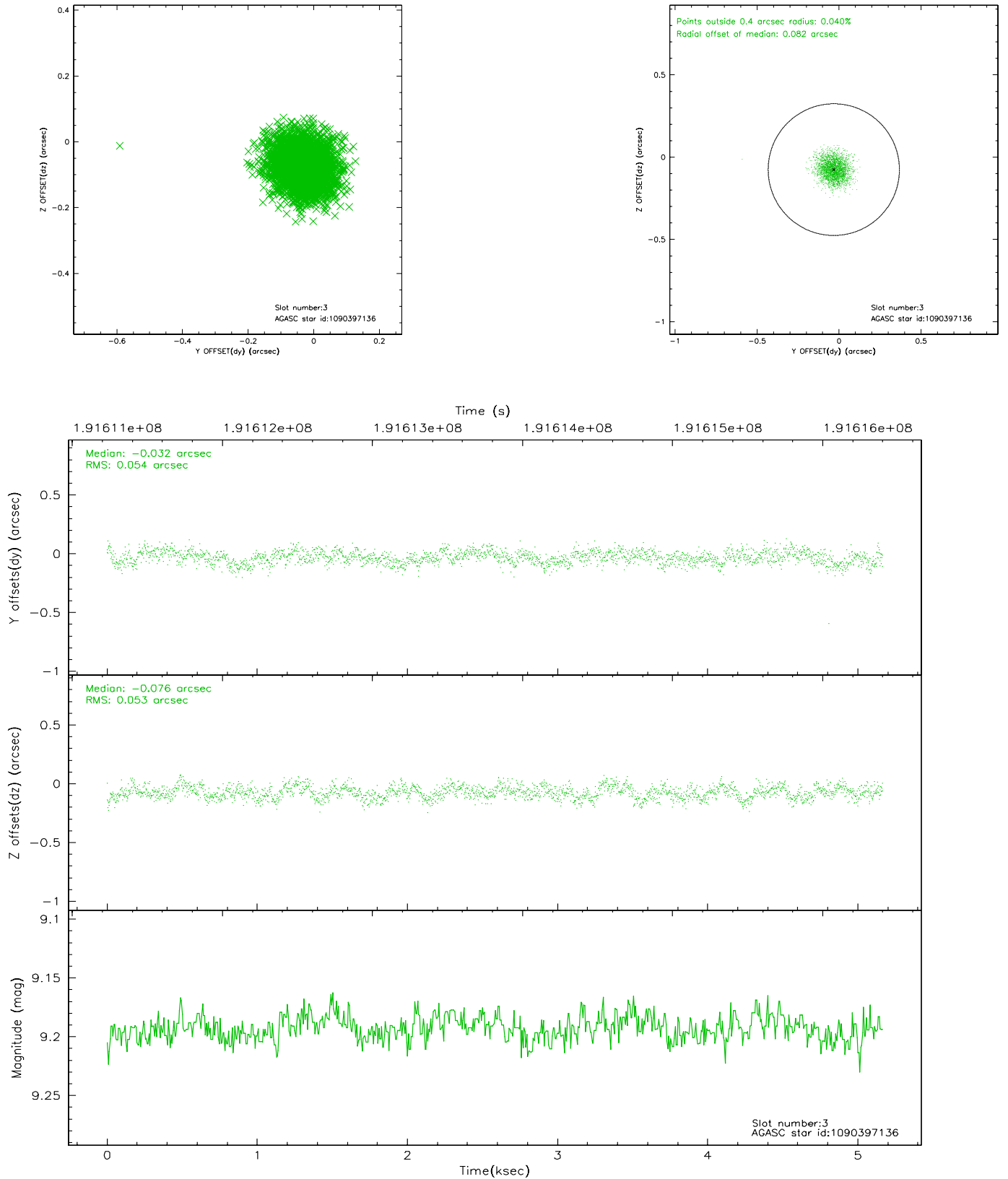
### Slot Statistics

slot	status	id	mag	n_pts	med_dy	med_dz	dr1	dr2	ra	dec	mean_y	mean_z
0	FID	ACIS-I-1	7.24	1260	0.004	0.019	0.007	0.012	0.000000	0.000000	933.25	-834.07
1	FID	ACIS-I-5	7.23	1260	-0.127	0.034	0.006	0.011	0.000000	0.000000	-1814.31	1062.89
2	FID	ACIS-I-6	7.25	1260	0.032	0.017	0.008	0.013	0.000000	0.000000	397.59	1708.67
3	GUIDE	1090397136	9.19	2521	-0.032	-0.076	0.080	0.128	243.971780	-50.589354	1393.64	824.87
4	GUIDE	1090521824	9.14	2518	-0.032	0.150	0.080	0.128	244.711253	-50.470098	1607.16	-907.43
5	GUIDE	1090922592	8.67	2521	0.030	-0.160	0.072	0.117	243.541382	-50.784876	809.40	1882.39
6	GUIDE	1090924096	8.06	2521	0.041	-0.103	0.052	0.086	243.849549	-51.016855	-100.48	1286.40
7	GUIDE	1091059112	9.07	2515	-0.007	0.190	0.069	0.117	245.180420	-50.736664	512.02	-1840.93

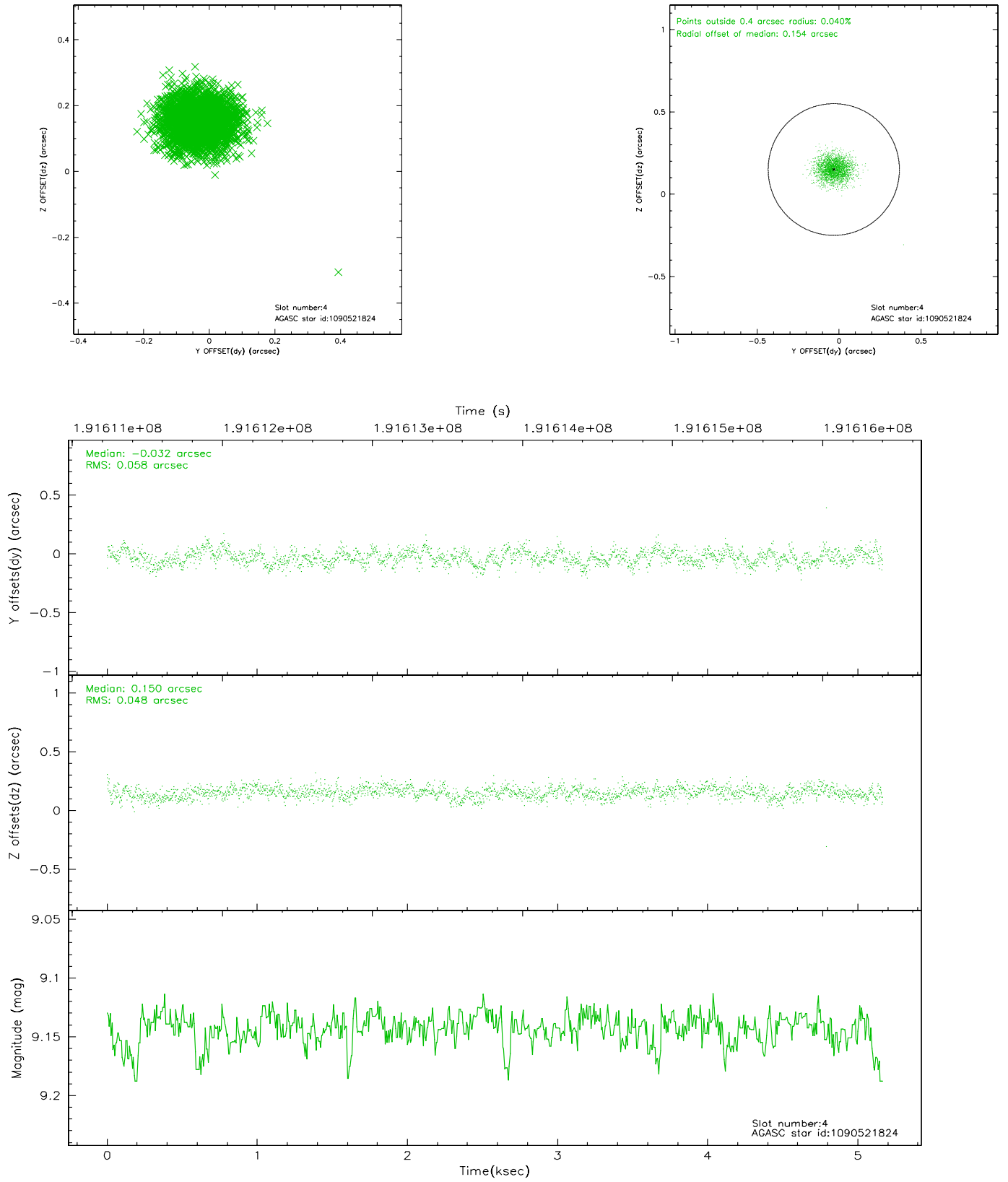


## 2.4 Star Slots

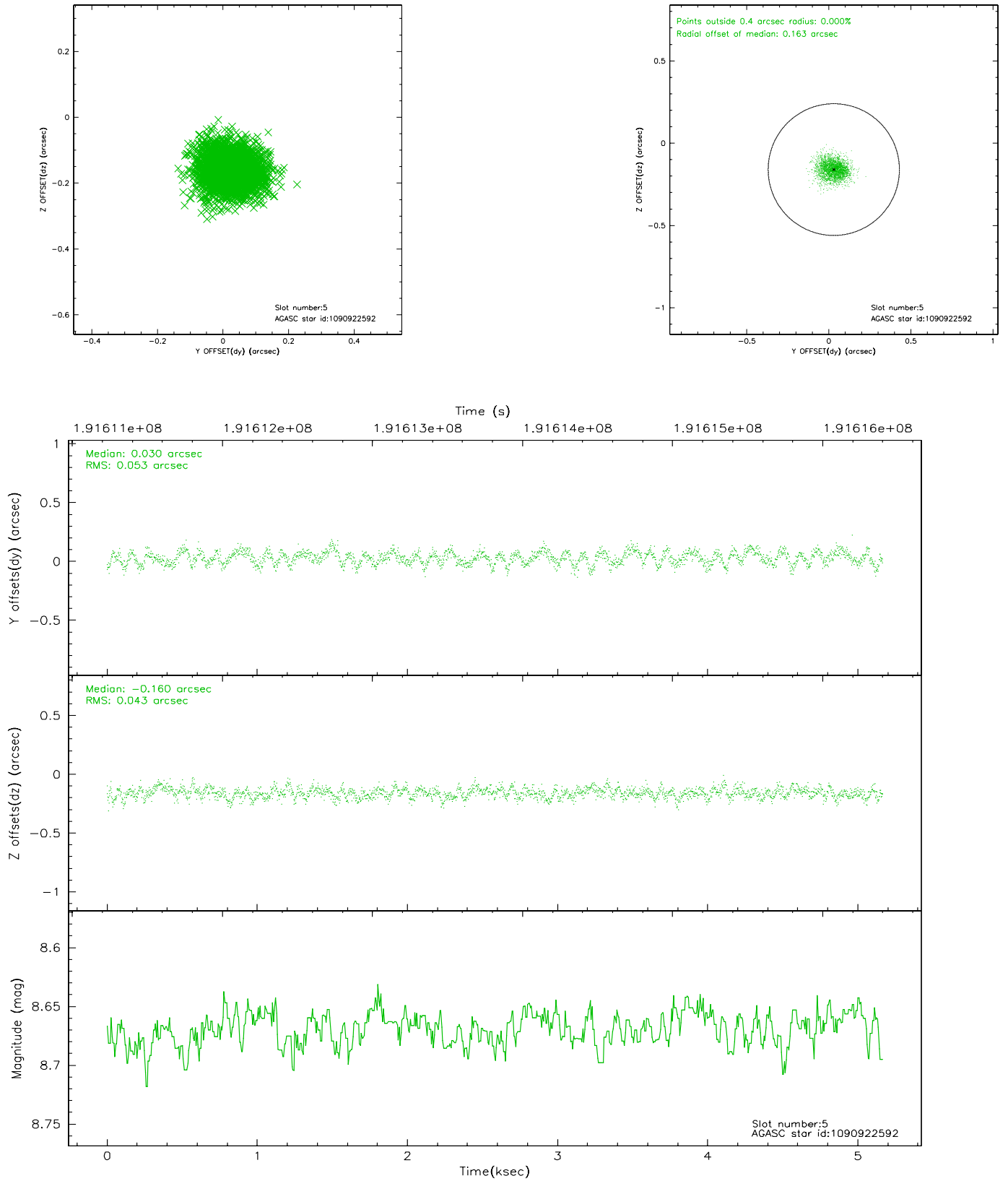
### 2.4.1 Slot 3



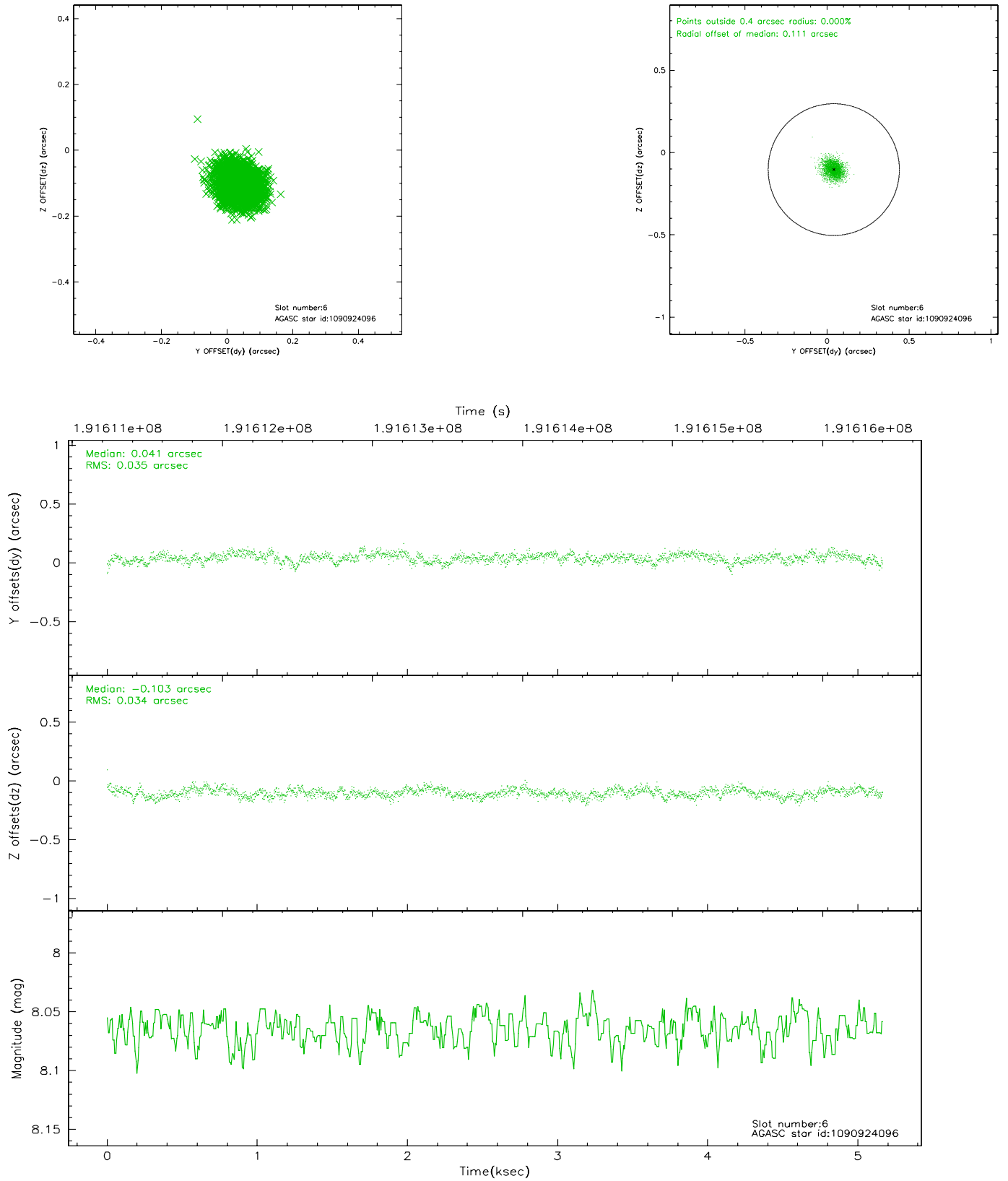
### 2.4.2 Slot 4



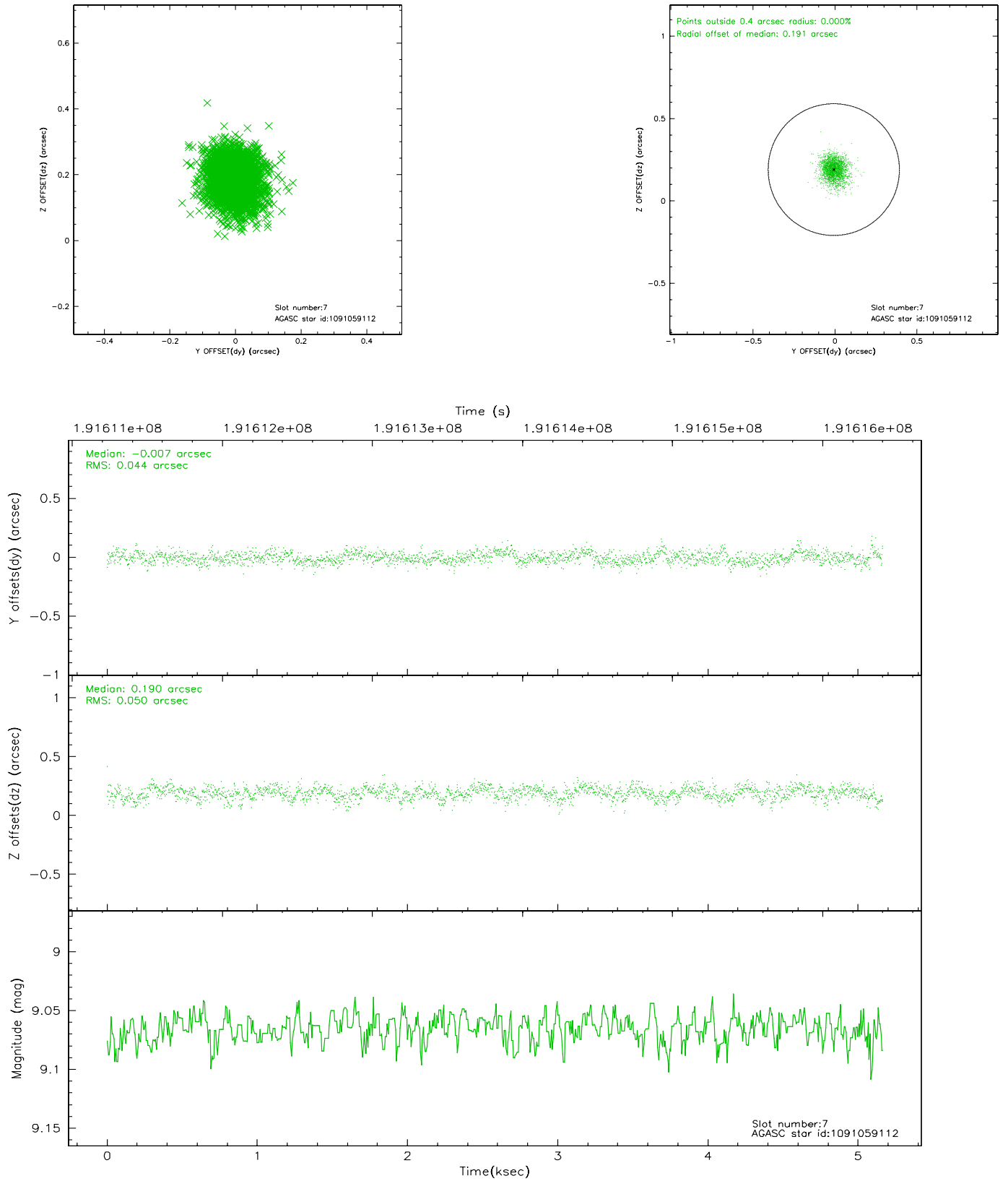
### 2.4.3 Slot 5



## 2.4.4 Slot 6

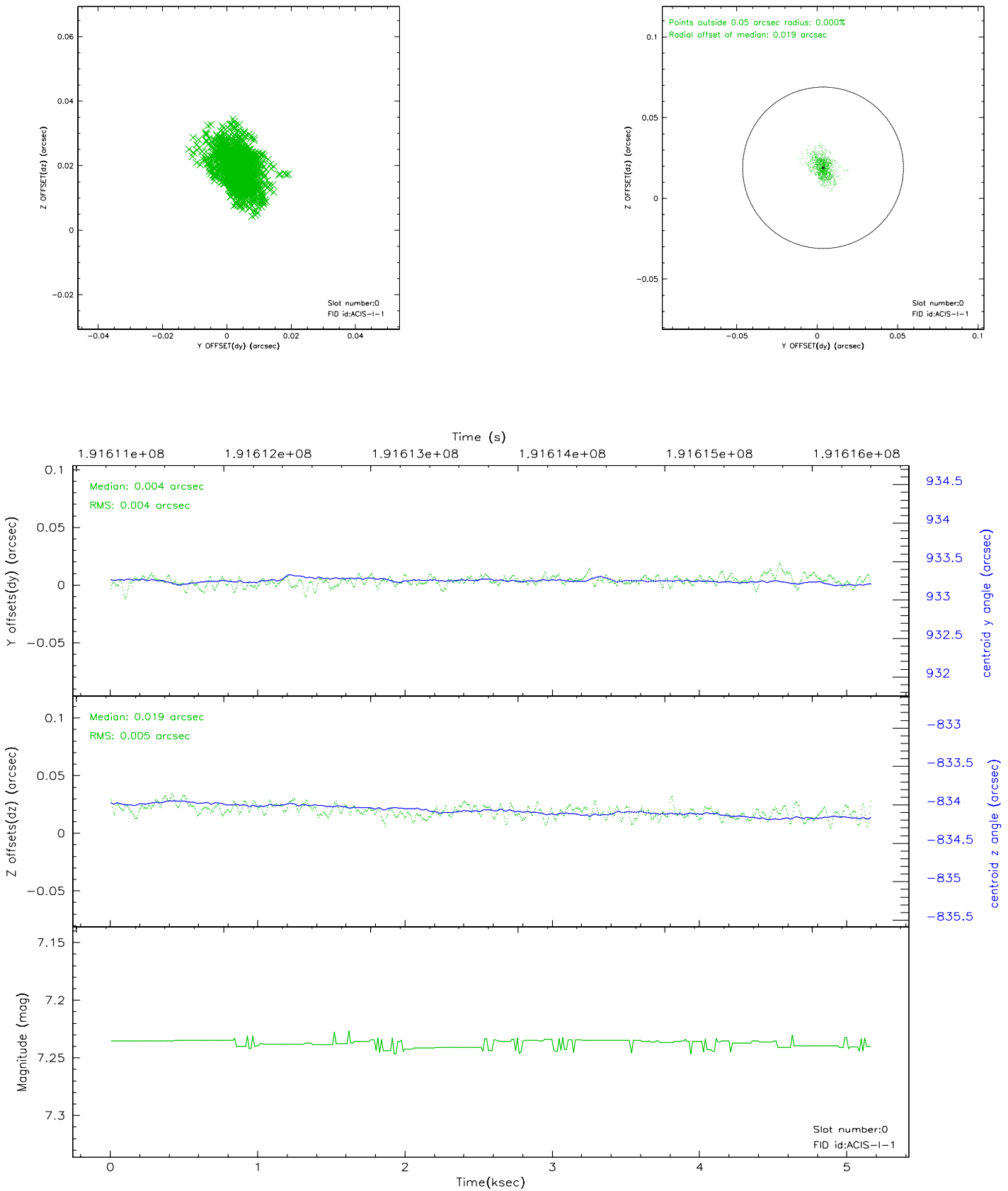


## 2.4.5 Slot 7

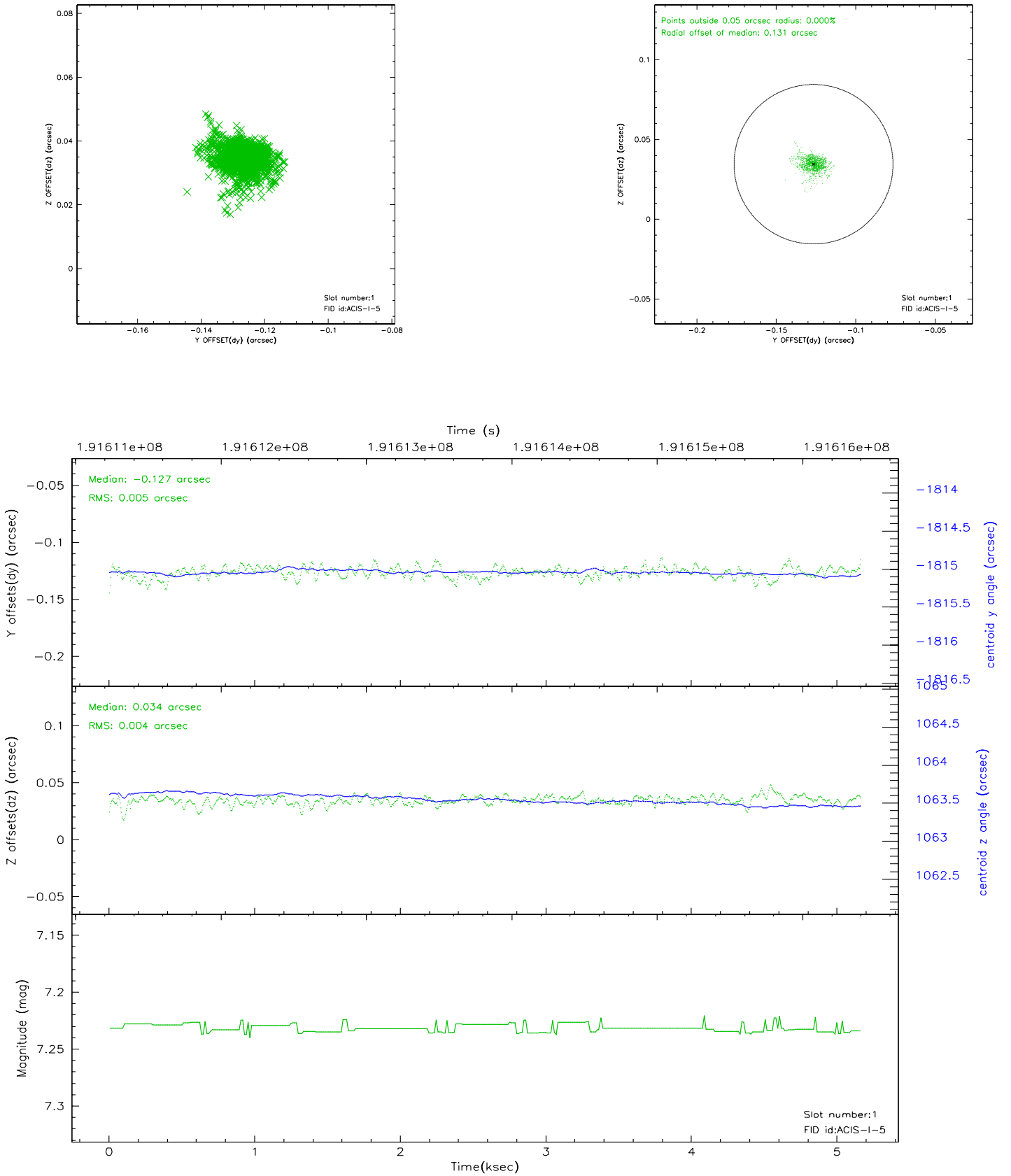


## 2.5 FID Slots

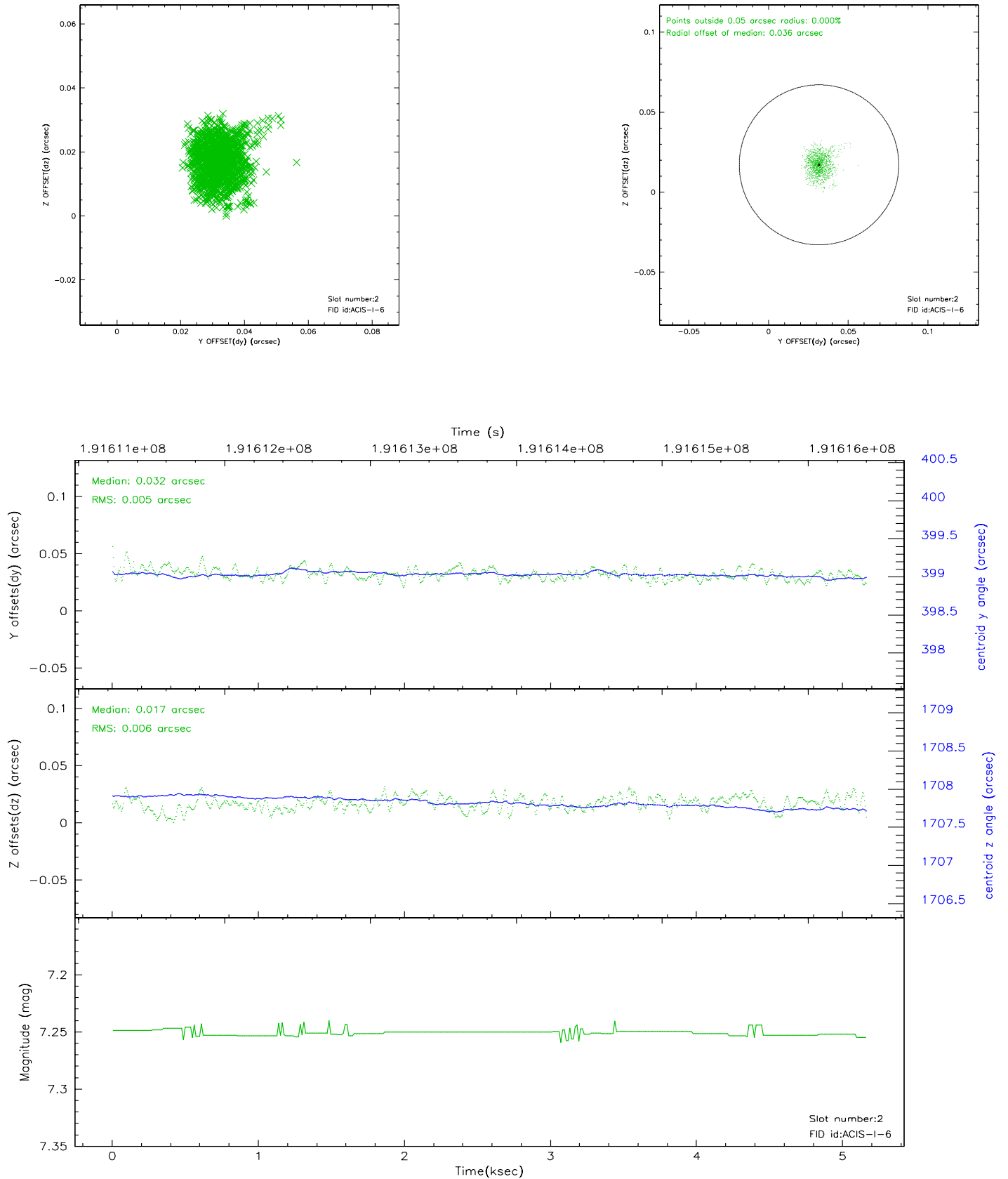
### 2.5.1 Slot 0



## 2.5.2 Slot 1



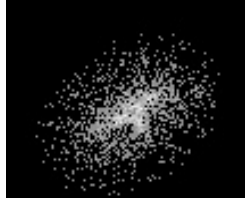
### 2.5.3 Slot 2





### 3 Point Sources

7.05 arcmin



## A Summary

### A.1 Status

V&V Scientist	Beth Sundheim
V&V Date (YYYY-MM-DD)	2006.06.07
V&V Edition	1
V&V Disposition and Status	OK
V&V Charge Time	5.164

### A.2 Comments