

# V&V Reference Report

## L2 ASCDS Version : 7.6.8

Observation 4166 - L2 Version 001  
Chandra X-Ray Center

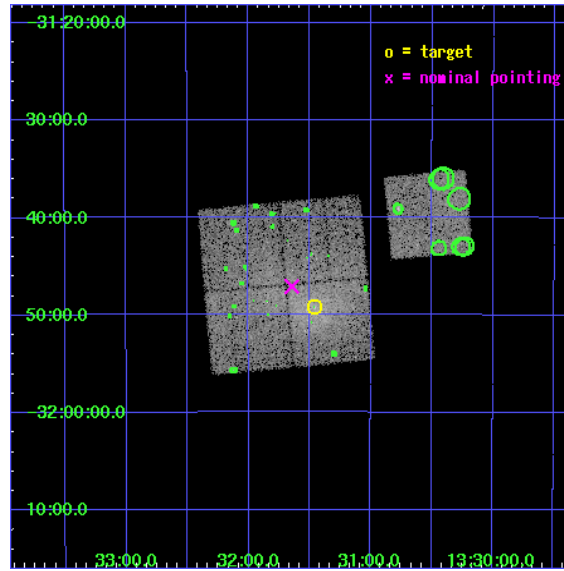
L2 Processing Date : Jun 23 2006

## Contents

<b>1</b>	<b>Front</b>	<b>2</b>
<b>2</b>	<b>OBI</b>	<b>3</b>
2.1	OBI . . . . .	3
2.1.1	Images . . . . .	3
2.1.2	Bias . . . . .	3
2.1.3	Parameters . . . . .	4
2.1.4	Events . . . . .	4
2.2	Compared Parameters . . . . .	5
2.3	Aspect . . . . .	6
2.4	Star Slots . . . . .	9
2.4.1	Slot 3 . . . . .	9
2.4.2	Slot 4 . . . . .	10
2.4.3	Slot 5 . . . . .	11
2.4.4	Slot 6 . . . . .	12
2.4.5	Slot 7 . . . . .	13
2.5	FID Slots . . . . .	14
2.5.1	Slot 0 . . . . .	14
2.5.2	Slot 1 . . . . .	15
2.5.3	Slot 2 . . . . .	16
<b>3</b>	<b>Point Sources</b>	<b>17</b>
<b>A</b>	<b>Summary</b>	<b>18</b>
A.1	Status . . . . .	18
A.2	Comments . . . . .	18

# 1 Front

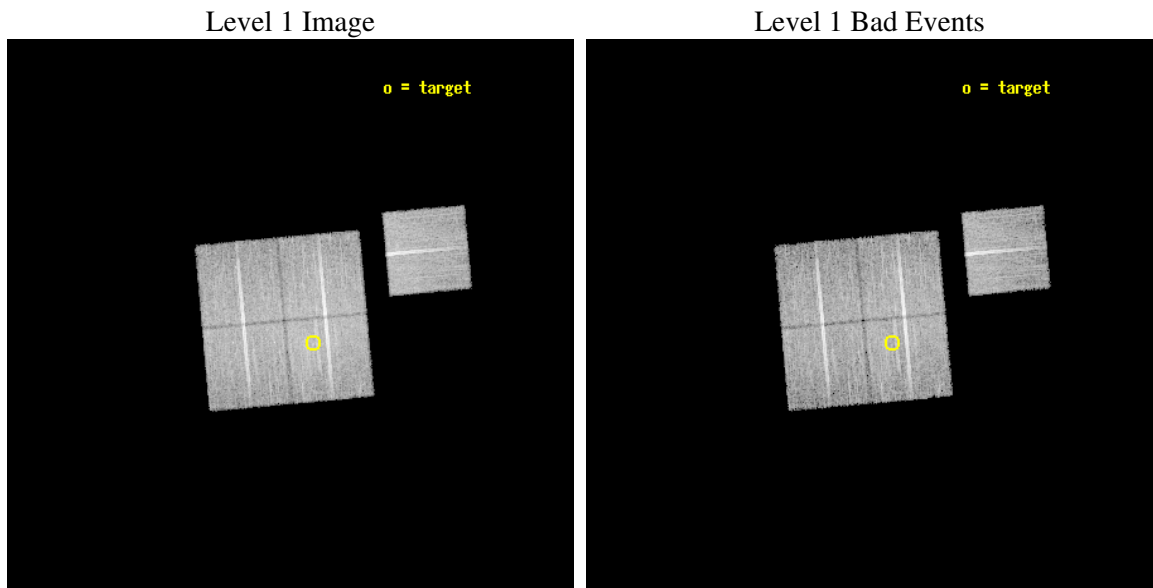
seq_num	800322
obs_id	4166
title	SPATIALLY RESOLVED OBSERVATION OF A MAJOR MERGING EVENT IN THE SHAPLEY SUPERCLUSTER
observer	DR STEFANO ETTORI
object	SC1329-313
dtcycle	0
cycle	P
ra_targ	202.865833
dec_targ	-31.818889
ra_nom	202.91118179509
dec_nom	-31.784802746343
roll_nom	84.787536249223
revision	2
ontime	19629.118011862
livetime	19372.649134291
ontime0	19629.118141413
ontime1	19635.399962246
ontime2	19629.118101507
ontime3	19629.118011862
ontime6	19635.399962246
l2events	62867



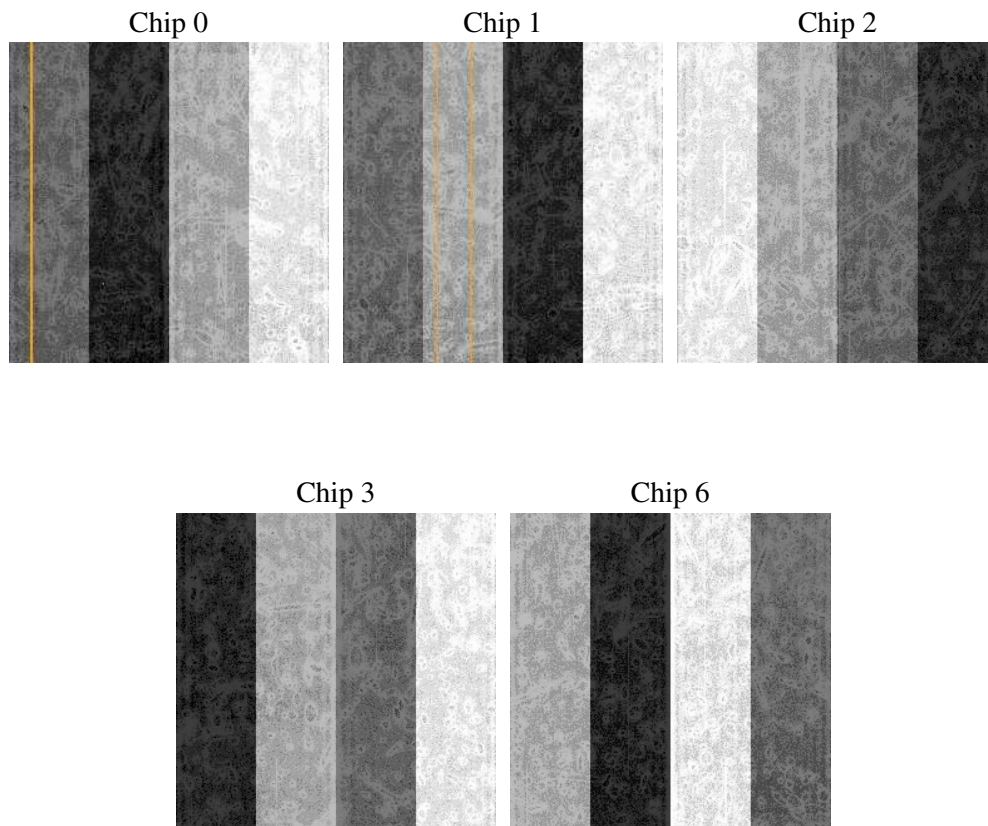
## 2 OBI

### 2.1 OBI

#### 2.1.1 Images



#### 2.1.2 Bias



### 2.1.3 Parameters

obi_num	0
ascdsver	7.6.8
caldsver	3.2.2
date	2006-06-23T14:46:52
revision	2

sched_exp_time	19500.000000
ontime	21305.422139138
ontime0	21321.127488583
ontime1	21321.127229422
ontime2	21311.704328686
ontime3	21305.422139138
ontime6	21308.563049525
l1events	530304

### 2.1.4 Events

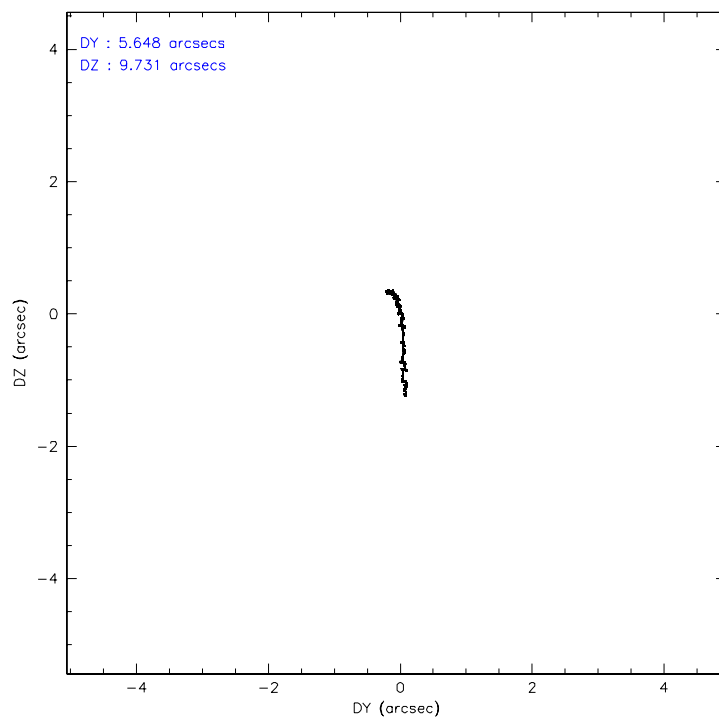
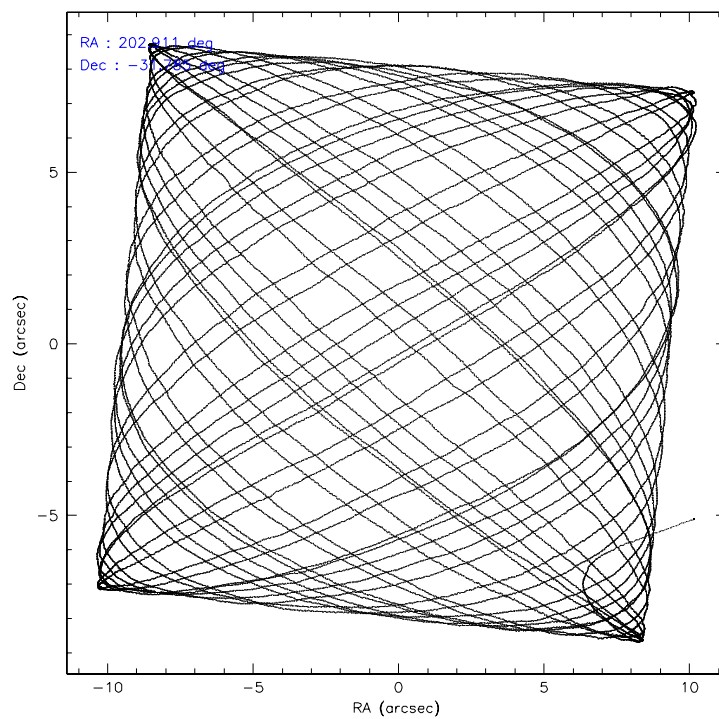
	ccd 0	ccd 1	ccd 2	ccd 3	ccd 6
level 1 events	97726	100779	110002	113597	108200
rejected events	84818	85979	97008	96213	94200
rejected %	86%	85%	88%	84%	87%

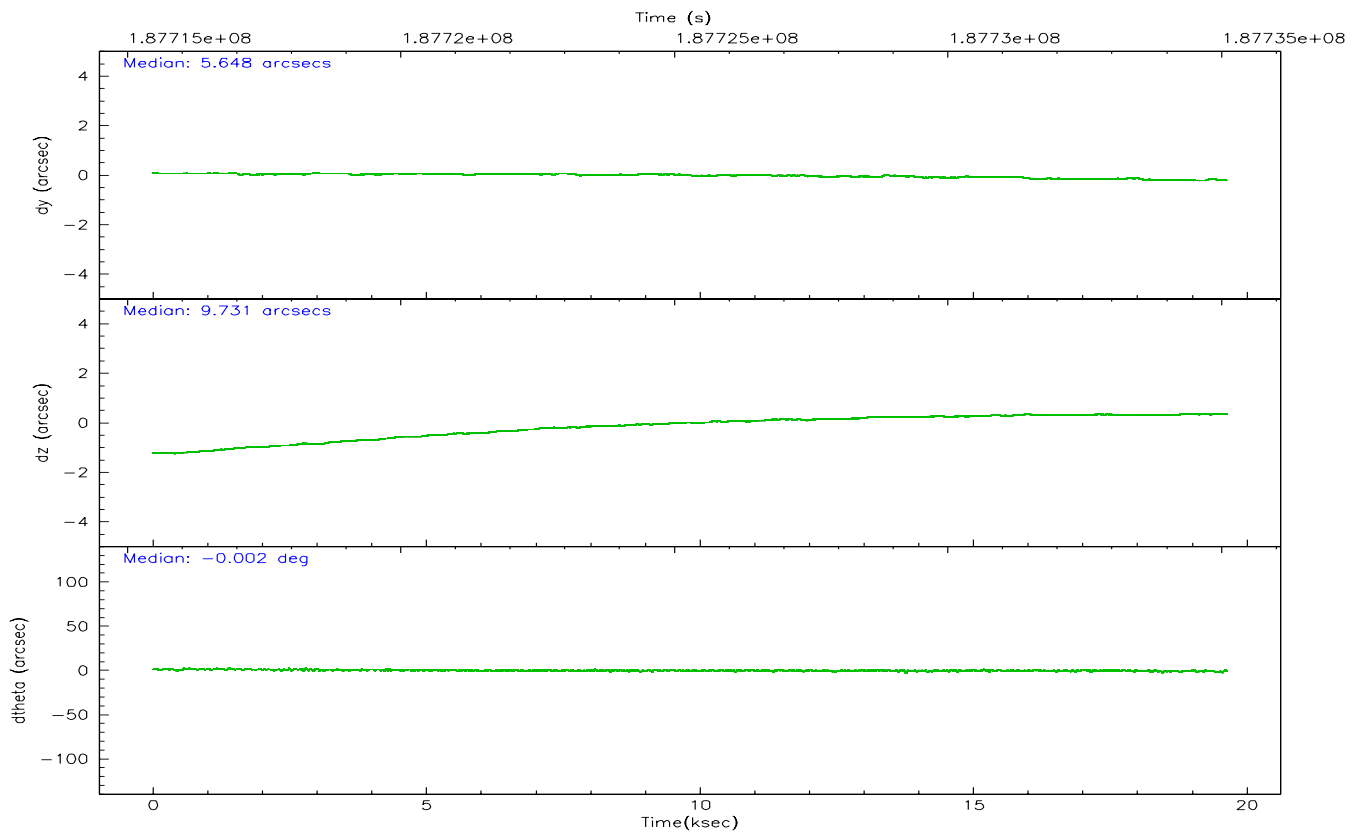
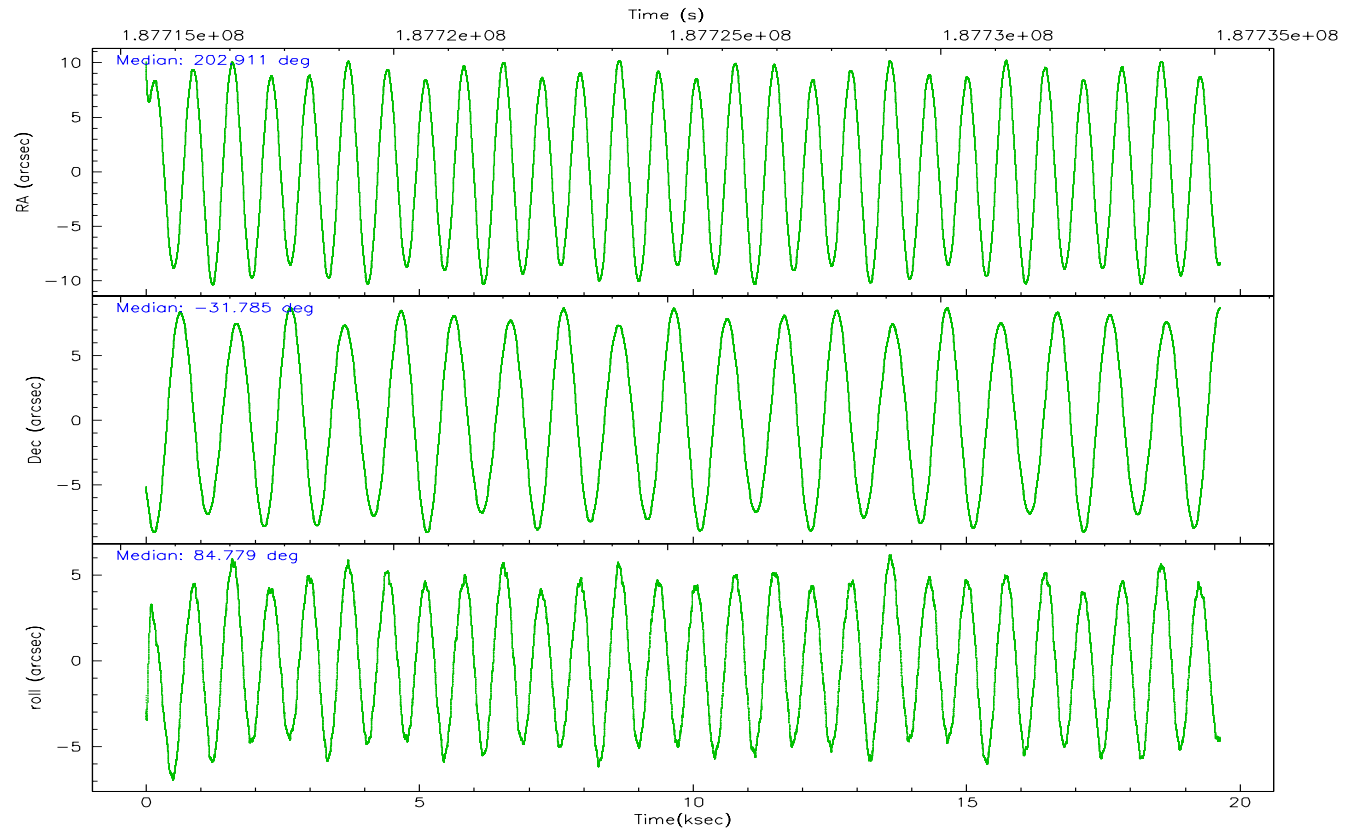
	ccd 0	ccd 1	ccd 2	ccd 3	ccd 6
grade 0 events	6232	7634	6779	10408	7288
	6%	7%	6%	9%	6%
grade 1 events	49	39	61	96	50
	0%	0%	0%	0%	0%
grade 2 events	2842	2881	2632	2916	2667
	2%	2%	2%	2%	2%
grade 3 events	1320	1383	1178	1371	1302
	1%	1%	1%	1%	1%
grade 4 events	1174	1395	1273	1332	1285
	1%	1%	1%	1%	1%
grade 5 events	3882	3905	3646	4226	4235
	3%	3%	3%	3%	3%
grade 6 events	2125	2414	1957	2173	2306
	2%	2%	1%	1%	2%
grade 7 events	80102	81128	92476	91075	89067
	81%	80%	84%	80%	82%

## 2.2 Compared Parameters

Parameter	Planned	Actual	Parameter	Planned	Actual
Instrument	ACIS	ACIS	Obspar format version number	6	6
Detector	ACIS-01236	ACIS-01236	Obspar file type	PREDICTED	ACTUAL
Grating	NONE	NONE	Obspar update status	NONE	UPDATED
Data mode	VFAINT	VFAINT	On-chip summing requested	N	N
Observation mode	POINTING	POINTING	Subarray requested	NONE	NONE
Pointing RA	202.924793	202.9111817950901	Alternating exposures requested	N	N
Pointing Dec	-31.809582	-31.78480274634273	Primary exposure time	0.000000	3.1
Pointing Roll	84.586028	84.7875362492227			
SIM focus pos (mm)	-0.782348	-0.7809083437167272			
SIM defocus (mm)	0	0.001439871863259334			
SIM translation stage pos (mm)	-233.592463	-233.5874344608287			
SIM translation stage offset (mm)	0	-0.005018542100998502			
Observation start time	187715611.184000	187713701.36639			
Observation start date	2003-12-13T15:12:27	2003-12-13T14:41:41			
Observation end time	187735111.184000	187735850.59236			
Observation end date	2003-12-13T20:37:27	2003-12-13T20:50:50			
Read mode	TIMED	TIMED			

## 2.3 Aspect





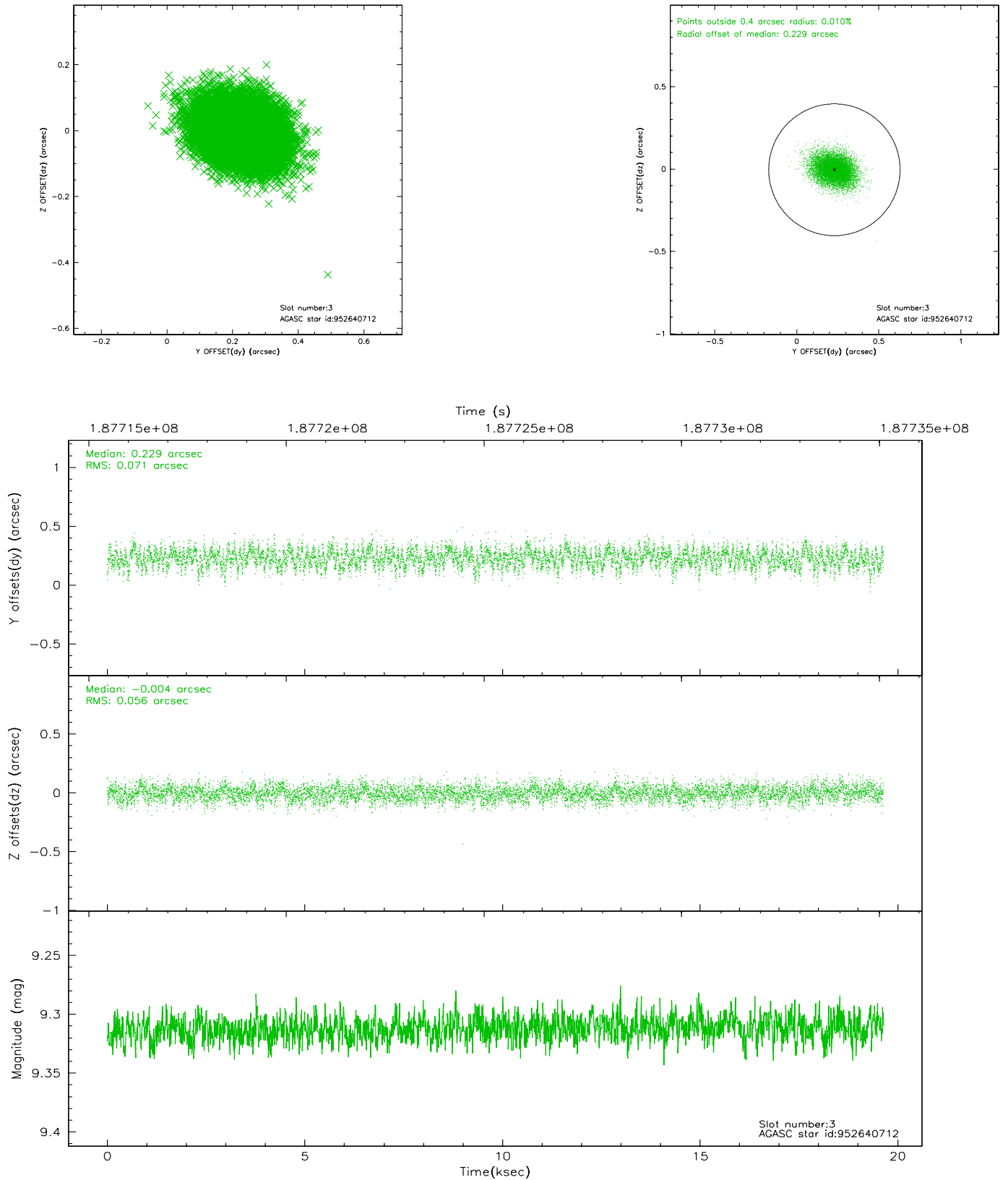
### Slot Statistics

slot	status	id	mag	n_pts	med_dy	med_dz	dr1	dr2	ra	dec	mean_y	mean_z
0	FID	ACIS-I-4	7.18	4791	0.018	0.036	0.016	0.031	0.000000	0.000000	2154.08	1066.88
1	FID	ACIS-I-5	7.23	4791	-0.131	0.025	0.011	0.019	0.000000	0.000000	-1813.77	1064.81
2	FID	ACIS-I-6	7.25	4791	0.013	0.006	0.013	0.026	0.000000	0.000000	399.45	1709.09
3	GUIDE	952640712	9.31	9580	0.229	-0.004	0.095	0.155	202.219584	-32.375412	-2237.07	1941.97
4	GUIDE	952765184	8.76	9581	-0.048	0.274	0.066	0.106	203.344875	-32.058909	-774.94	-1360.12
5	GUIDE	952116240	8.38	9580	-0.186	-0.052	0.067	0.107	202.422973	-31.388320	1360.41	1678.65
6	GUIDE	952646080	7.60	9582	-0.046	-0.353	0.041	0.067	202.214424	-32.002598	-903.44	2092.83
7	GUIDE	952763888	9.17	9578	0.055	0.133	0.080	0.130	203.325048	-31.883969	-153.09	-1242.58

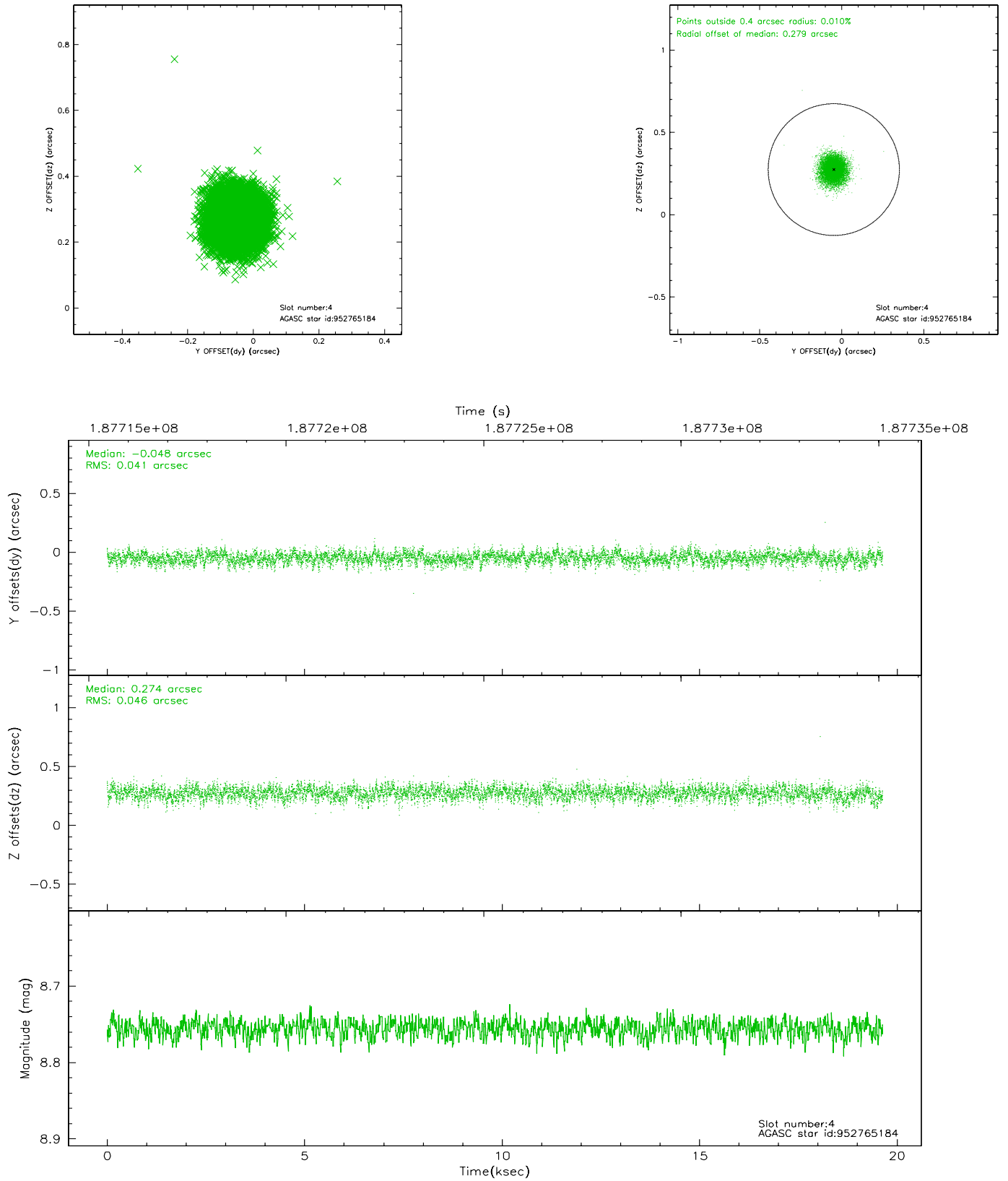


## 2.4 Star Slots

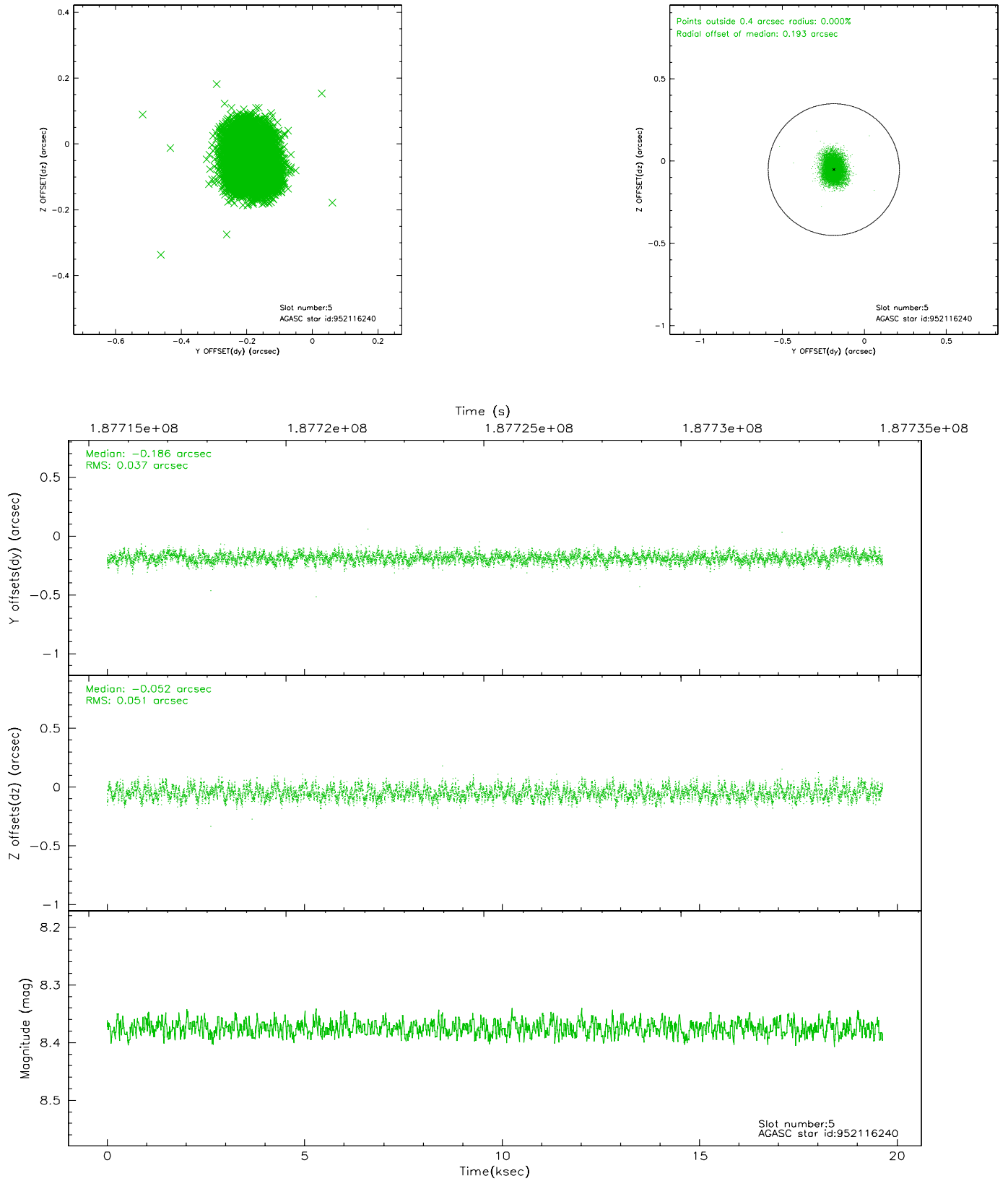
### 2.4.1 Slot 3



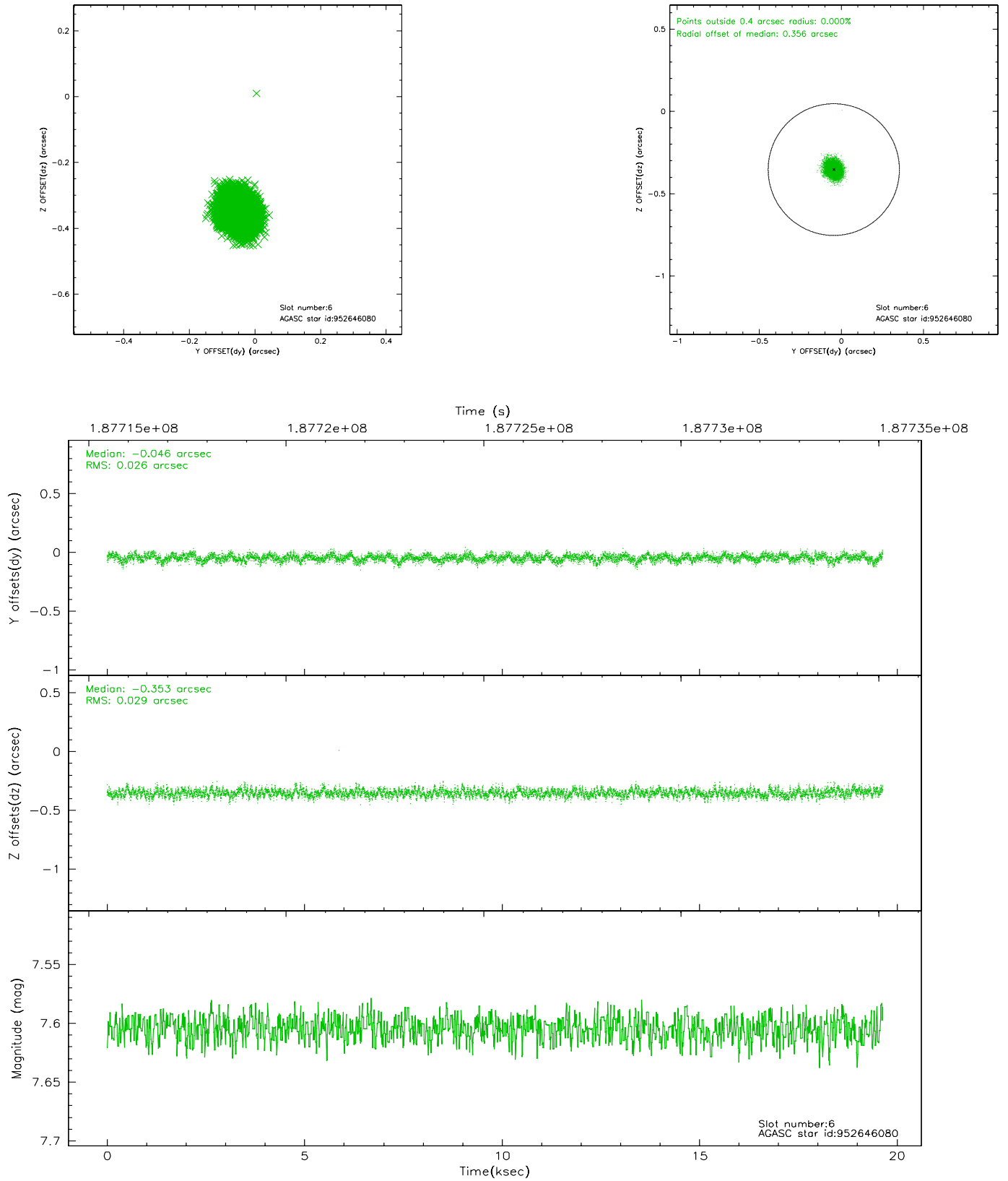
## 2.4.2 Slot 4



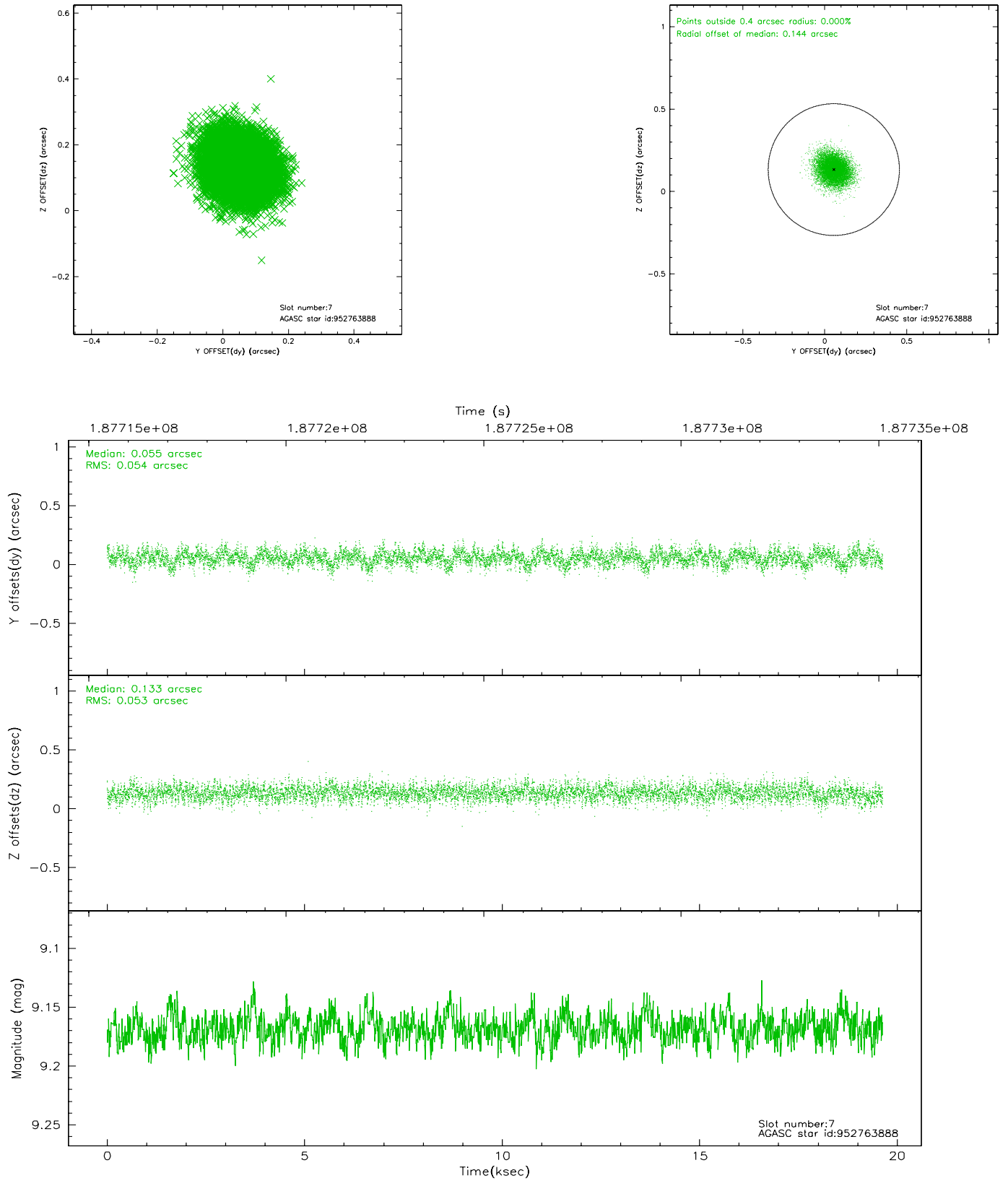
### 2.4.3 Slot 5



## 2.4.4 Slot 6

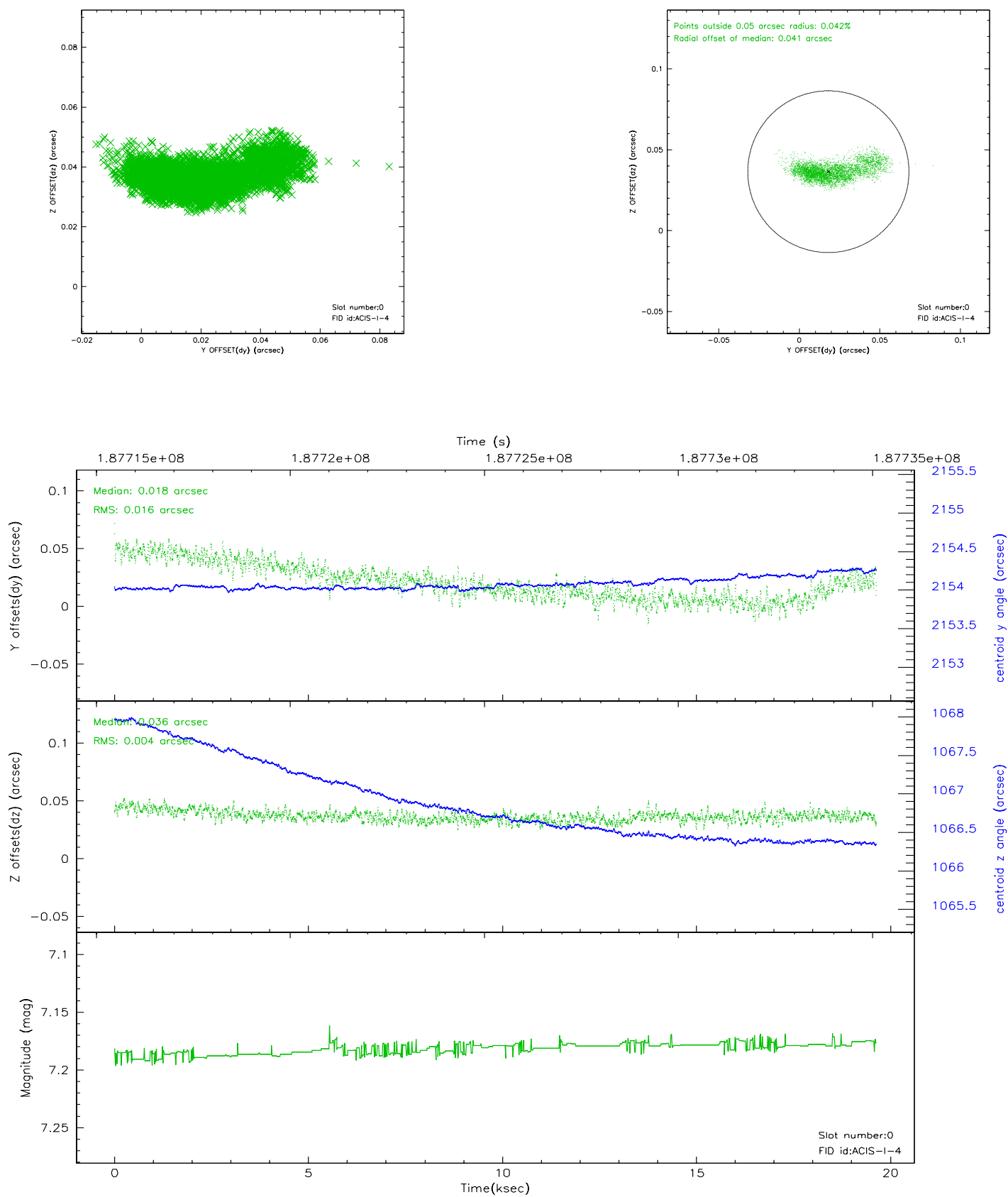


## 2.4.5 Slot 7

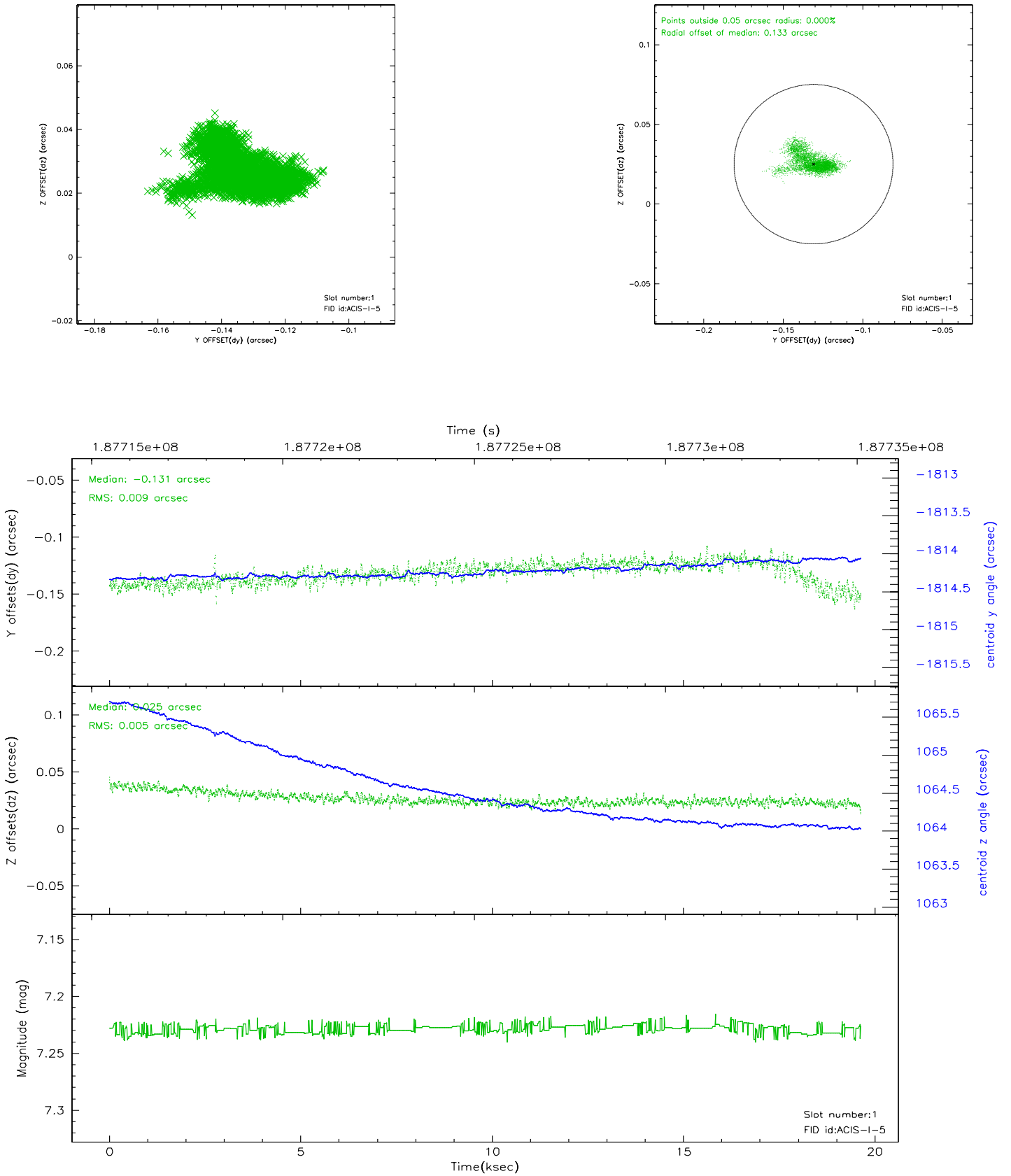


## 2.5 FID Slots

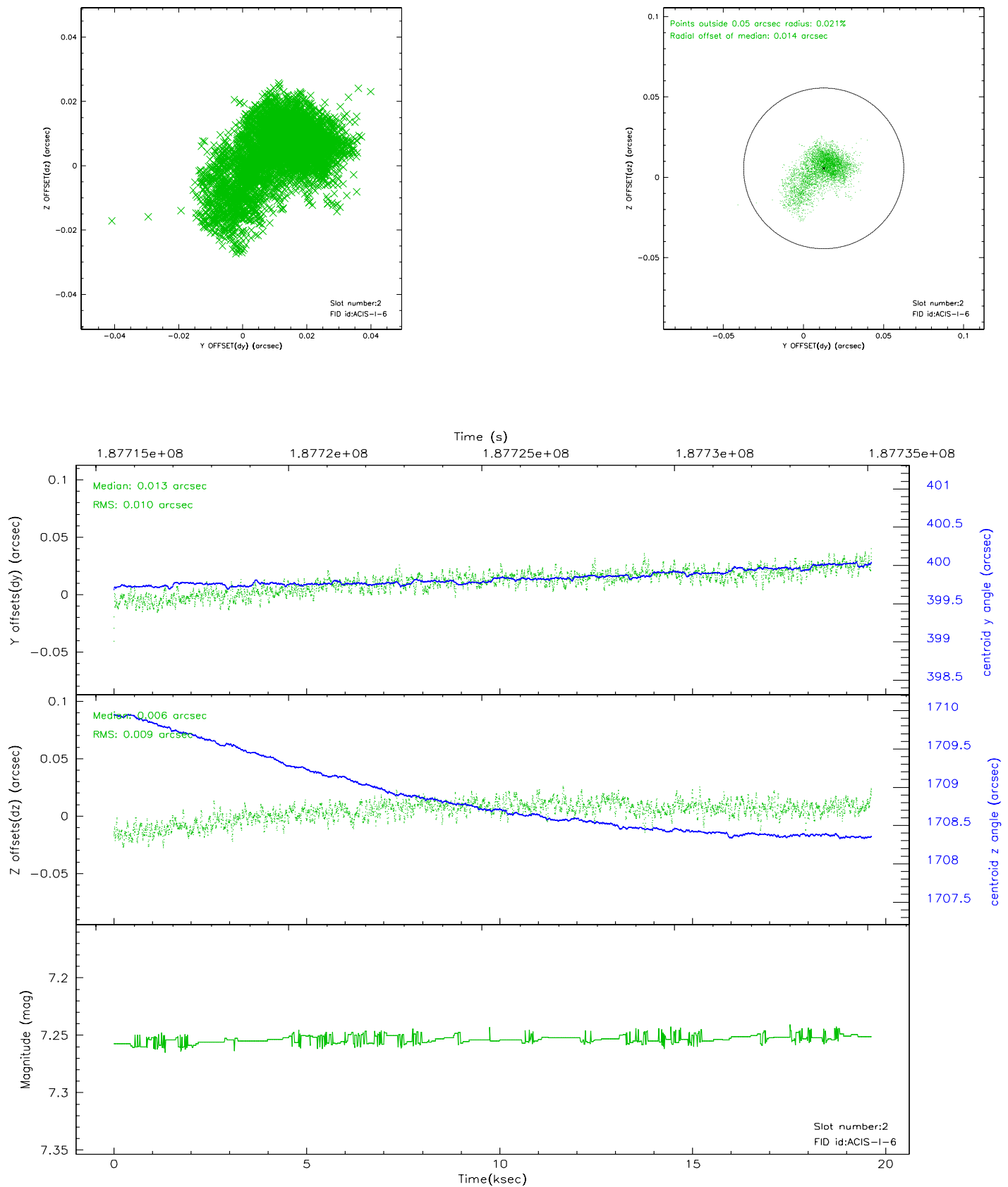
### 2.5.1 Slot 0



## 2.5.2 Slot 1

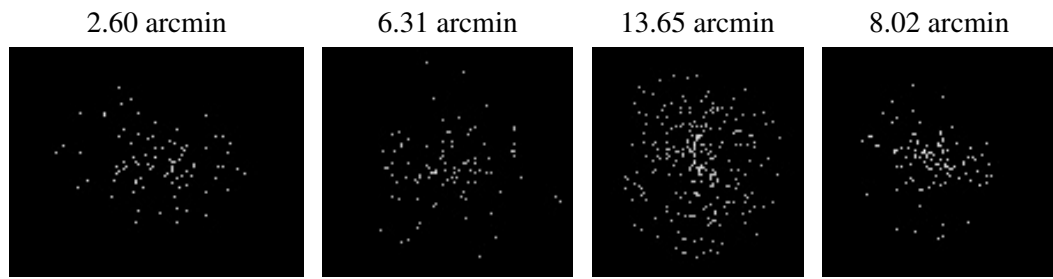


### 2.5.3 Slot 2





### 3 Point Sources



## A Summary

### A.1 Status

V&V Scientist	Jen Lauer
V&V Date (YYYY-MM-DD)	2006.06.23
V&V Edition	1
V&V Disposition and Status	OK
V&V Charge Time	19.625

### A.2 Comments