

# V&V Reference Report

## L2 ASCDS Version : 7.6.9

Observation 4006 - L2 Version 001  
Chandra X-Ray Center

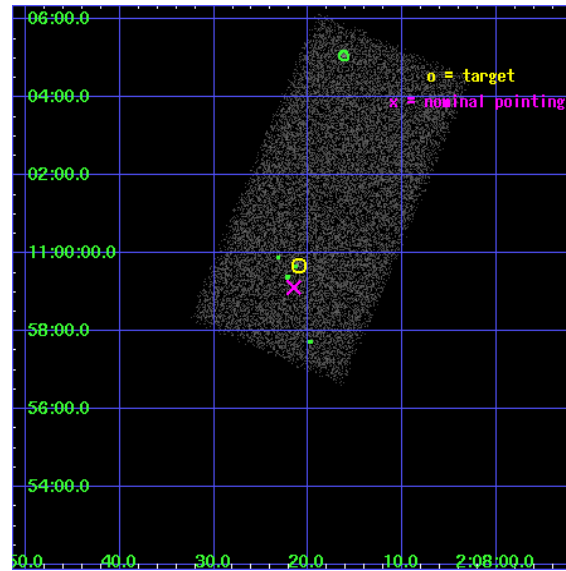
L2 Processing Date : Oct 13 2006

## Contents

<b>1</b>	<b>Front</b>	<b>2</b>
<b>2</b>	<b>OBI</b>	<b>3</b>
2.1	OBI . . . . .	3
2.1.1	Images . . . . .	3
2.1.2	Bias . . . . .	3
2.1.3	Parameters . . . . .	4
2.1.4	Events . . . . .	4
2.2	Compared Parameters . . . . .	5
2.3	Aspect . . . . .	6
2.4	Star Slots . . . . .	9
2.4.1	Slot 3 . . . . .	9
2.4.2	Slot 4 . . . . .	10
2.4.3	Slot 5 . . . . .	11
2.4.4	Slot 6 . . . . .	12
2.4.5	Slot 7 . . . . .	13
2.5	FID Slots . . . . .	14
2.5.1	Slot 0 . . . . .	14
2.5.2	Slot 1 . . . . .	15
2.5.3	Slot 2 . . . . .	16
<b>3</b>	<b>Point Sources</b>	<b>17</b>
<b>A</b>	<b>Summary</b>	<b>18</b>
A.1	Status . . . . .	18
A.2	Comments . . . . .	18

# 1 Front

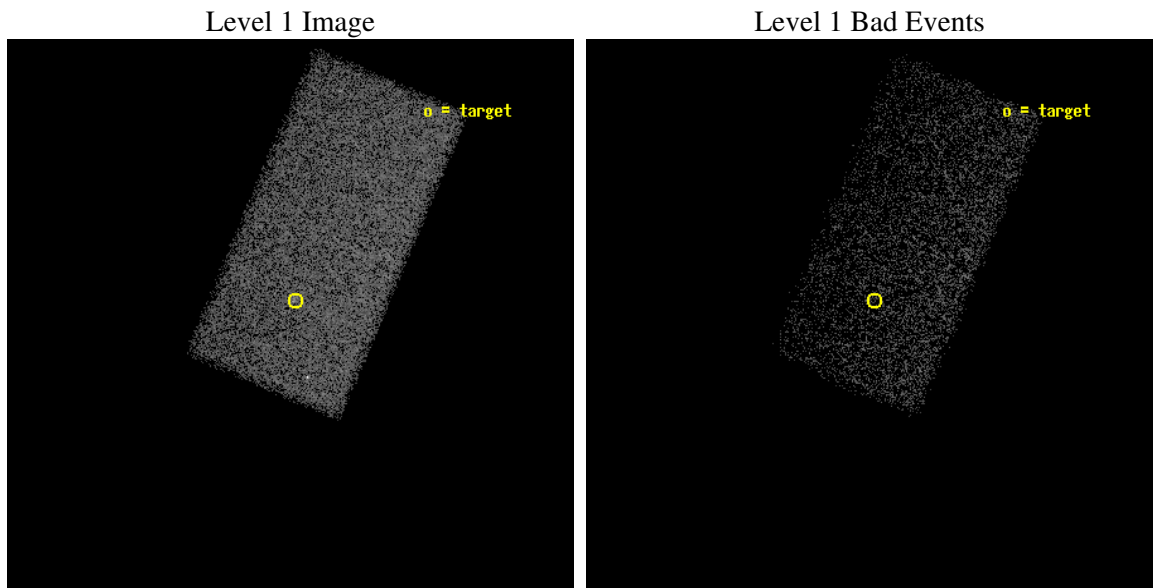
seq_num	700685
obs_id	4006
title	QUIESCENT SUPERMASSIVE BLACK HOLES
observer	Dr Giuseppina Fabbiano
object	NGC 821
dtcycle	0
cycle	P
ra_targ	32.0875
dec_targ	10.994722
ra_nom	32.089719300378
dec_nom	10.98534816826
roll_nom	293.01819922901
revision	3
ontime	13684.5
livetime	13320.063074287
ontime7	13684.5
l2events	22595



## 2 OBI

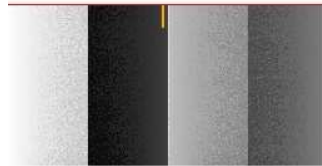
### 2.1 OBI

#### 2.1.1 Images



#### 2.1.2 Bias

Chip 7



### 2.1.3 Parameters

obi_num	1
ascdsver	7.6.9
caldbver	3.2.3
date	2006-10-13T16:51:18
revision	3

sched_exp_time	13500.000000
ontime	14513.348055214
ontime7	14513.348055214
l1events	68943

### 2.1.4 Events

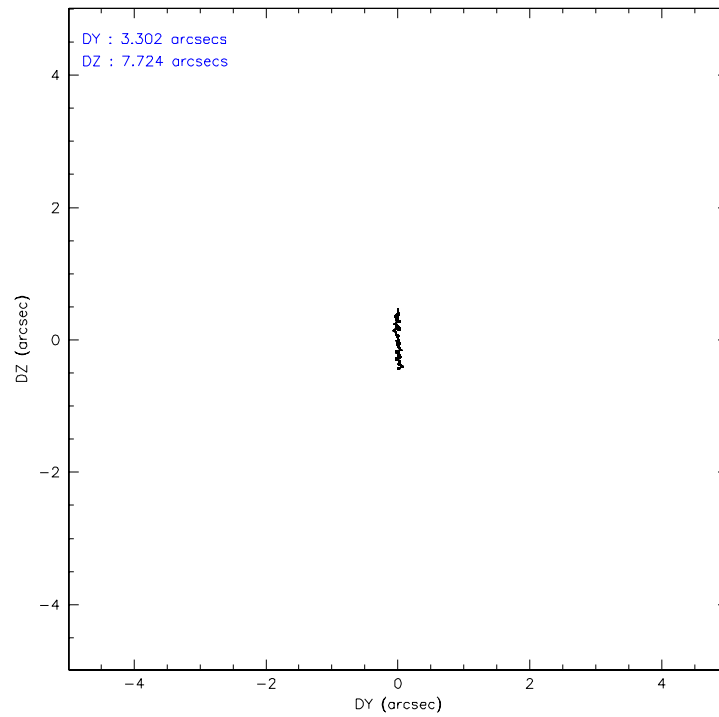
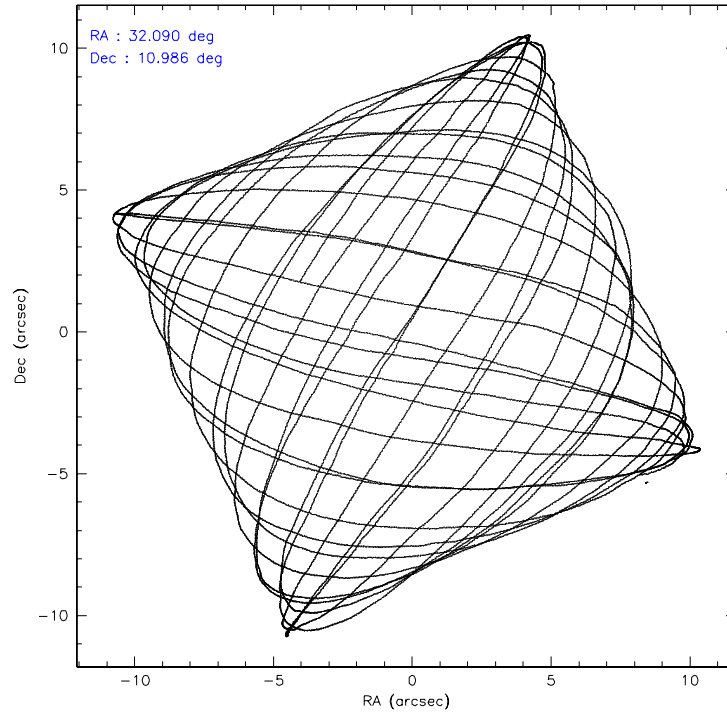
	<b>ccd 7</b>
level 1 events	68943
rejected events	45768
rejected %	66%

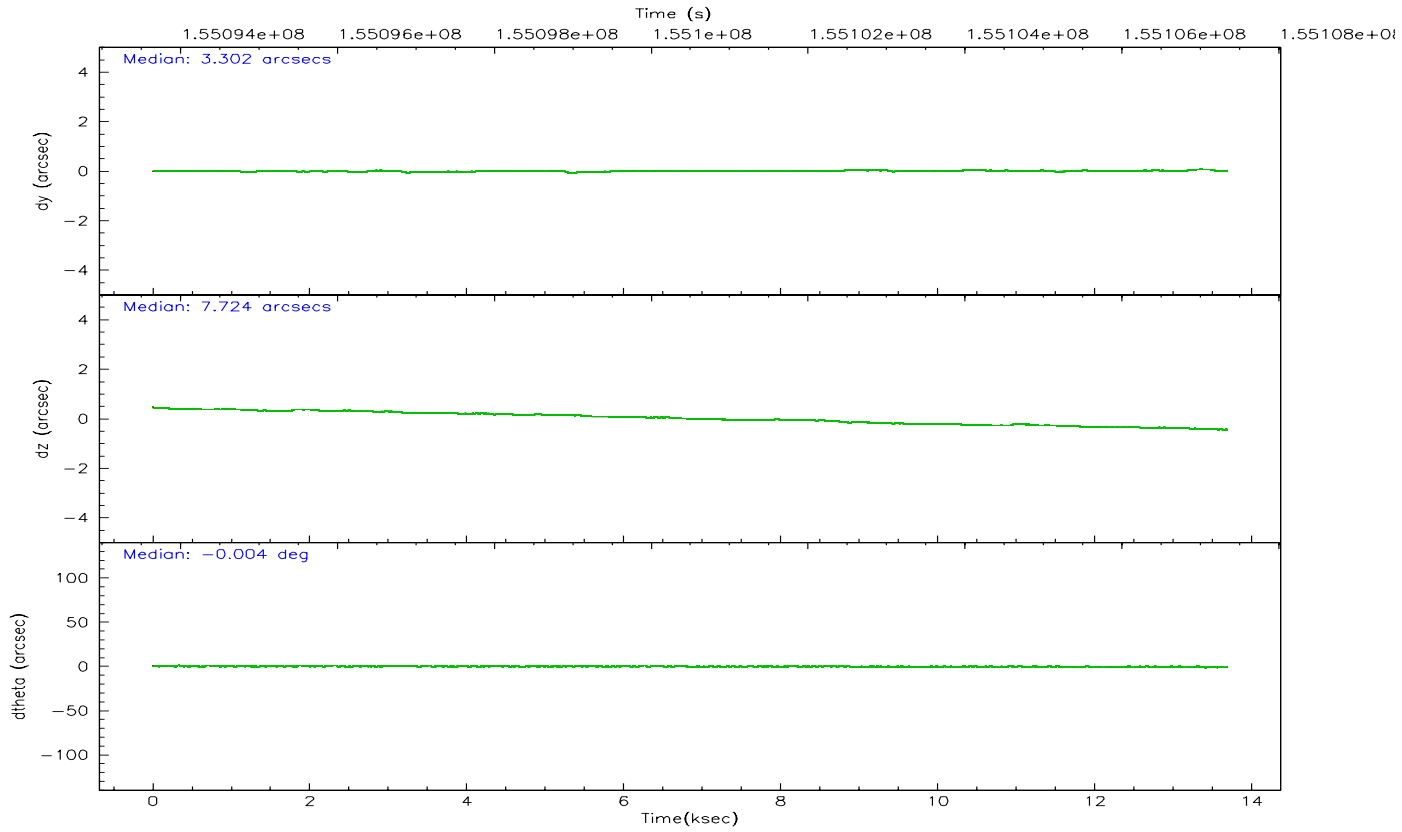
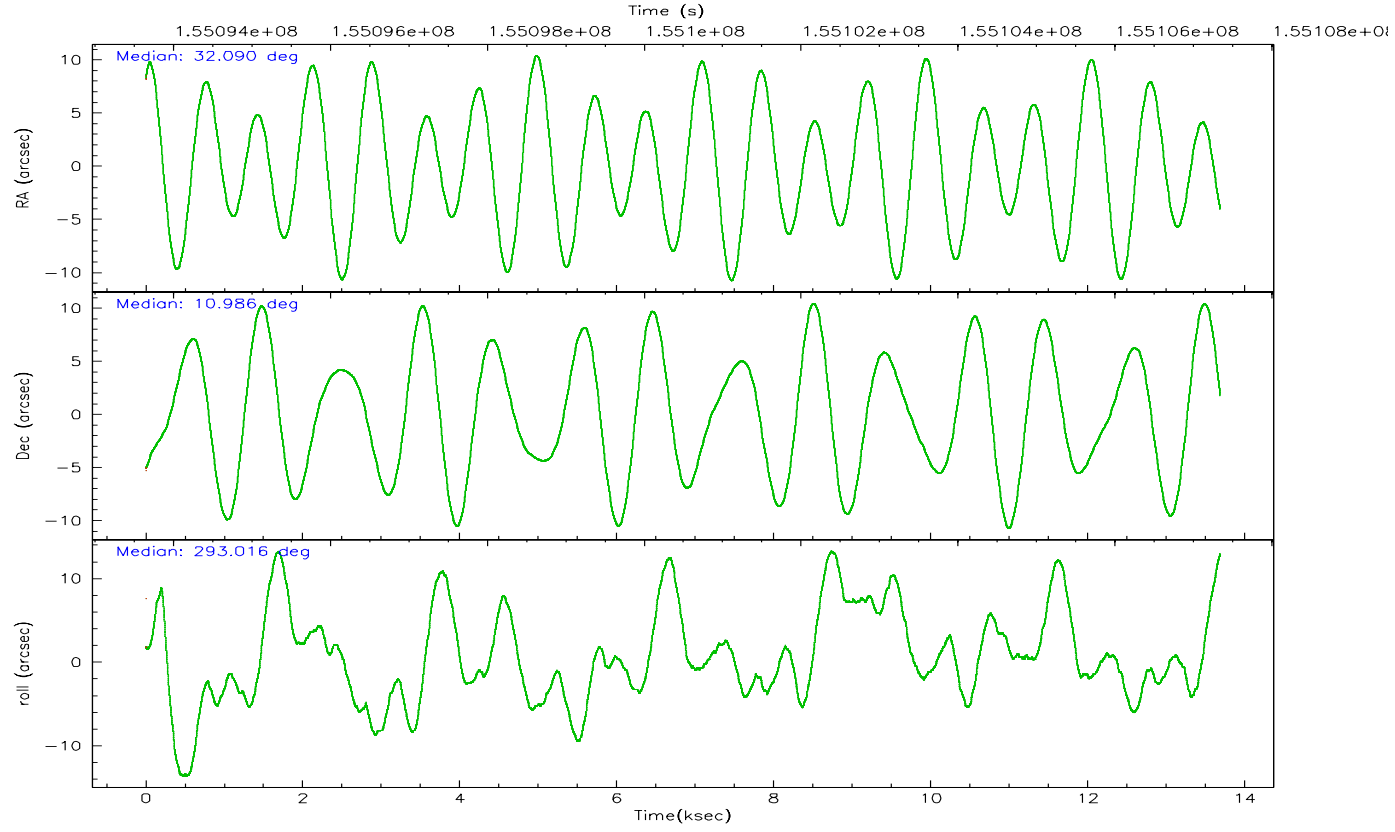
	<b>ccd 7</b>
grade 0 events	3332
	4%
grade 1 events	37
	0%
grade 2 events	8322
	12%
grade 3 events	2234
	3%
grade 4 events	2242
	3%
grade 5 events	4300
	6%
grade 6 events	16223
	23%
grade 7 events	32253
	46%

## 2.2 Compared Parameters

Parameter	Planned	Actual	Parameter	Planned	Actual
Instrument	ACIS	ACIS	Obspar format version number	6	6
Detector	ACIS-7	ACIS-7	Obspar file type	PREDICTED	ACTUAL
Grating	NONE	NONE	Obspar update status	NONE	UPDATED
Data mode	VFAINT	VFAINT	Number of optional ACIS chips dropped	0	0
Observation mode	POINTING	POINTING	On-chip summing requested	N	N
Pointing RA	32.067314	32.08971930037809	Subarray requested	1/2	1/2
Pointing Dec	11.001377	10.98534816826039	Subarray start row	0	257
Pointing Roll	292.865850	293.0181992290054	Subarray row count	1024	512
SIM focus pos (mm)	-0.684267	-0.6828225247311905	Alternating exposures requested	N	N
SIM defocus (mm)	0	0.001444936568705701	Primary exposure time	0.000000	1.5
SIM translation stage pos (mm)	-190.132523	-190.1400660498719			
SIM translation stage offset (mm)	0	0.00754346686406393			
Observation start time	155093838.184000	155092765.94319			
Observation start date	2002-12-01T01:36:14	2002-12-01T01:19:25			
Observation end time	155107338.184000	155108052.79383			
Observation end date	2002-12-01T05:21:14	2002-12-01T05:34:12			
Read mode	TIMED	TIMED			

## 2.3 Aspect





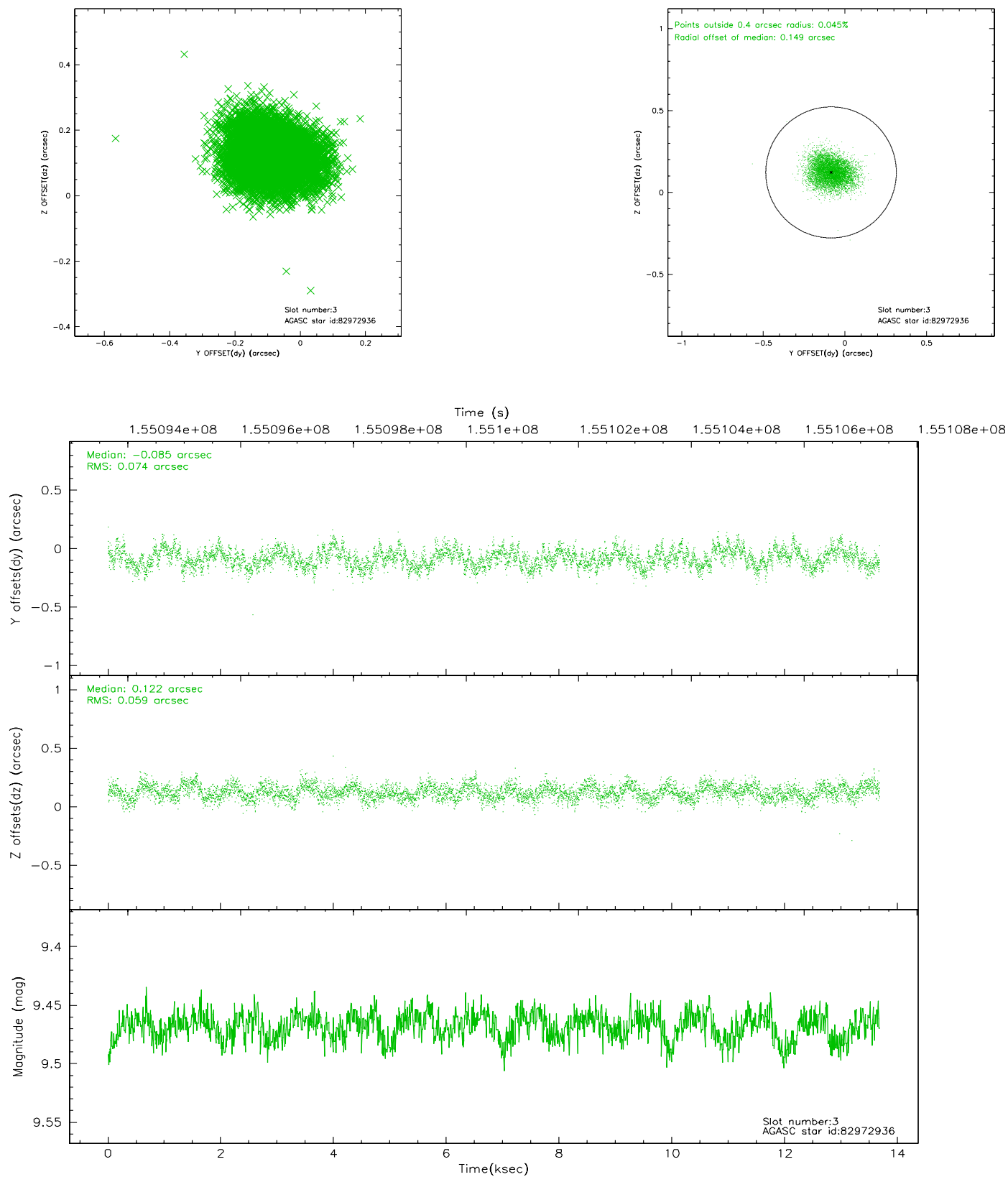
### Slot Statistics

slot	status	id	mag	n_pts	med_dy	med_dz	dr1	dr2	ra	dec	mean_y	mean_z
0	FID	ACIS-S-2	7.11	3339	0.001	0.016	0.007	0.011	0.000000	0.000000	-755.96	-1728.90
1	FID	ACIS-S-4	7.20	3339	-0.036	-0.005	0.005	0.009	0.000000	0.000000	2157.13	179.19
2	FID	ACIS-S-5	7.24	3338	0.003	-0.002	0.006	0.011	0.000000	0.000000	-1808.35	173.27
3	GUIDE	82972936	9.47	6670	-0.085	0.122	0.101	0.161	31.880349	11.323150	-1322.92	-157.66
4	GUIDE	82972976	9.71	6667	-0.084	-0.002	0.094	0.153	31.722409	11.276757	-1386.24	-736.39
5	GUIDE	82976896	10.73	6448	0.154	0.013	0.238	0.436	32.651084	10.578772	2204.00	1313.48
6	GUIDE	82974960	9.81	6669	-0.094	-0.131	0.121	0.194	31.911636	11.621581	-2269.32	362.01
7	GUIDE	82976744	9.51	6673	0.127	-0.005	0.103	0.170	32.095784	10.602457	1363.33	-464.92

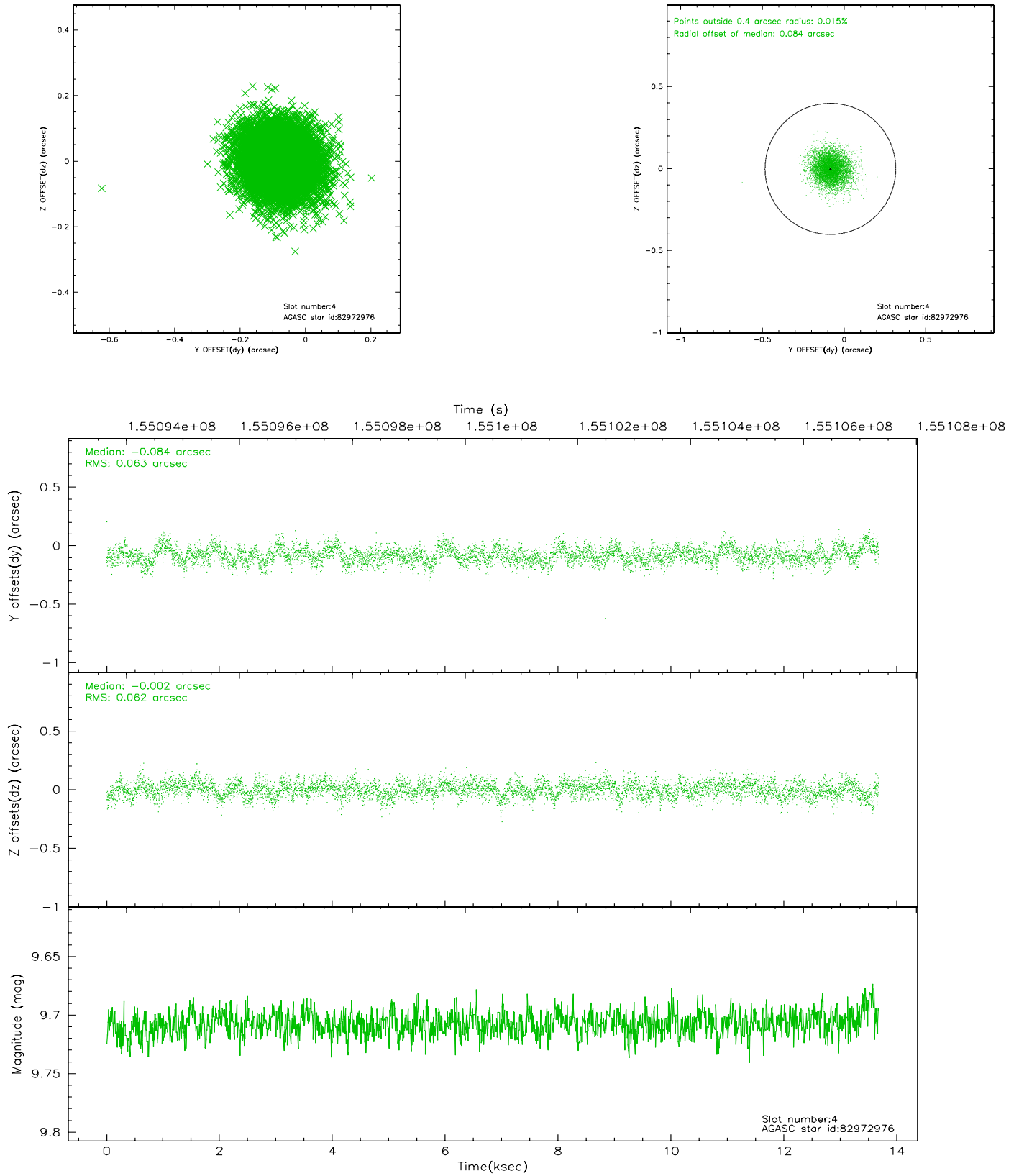


## 2.4 Star Slots

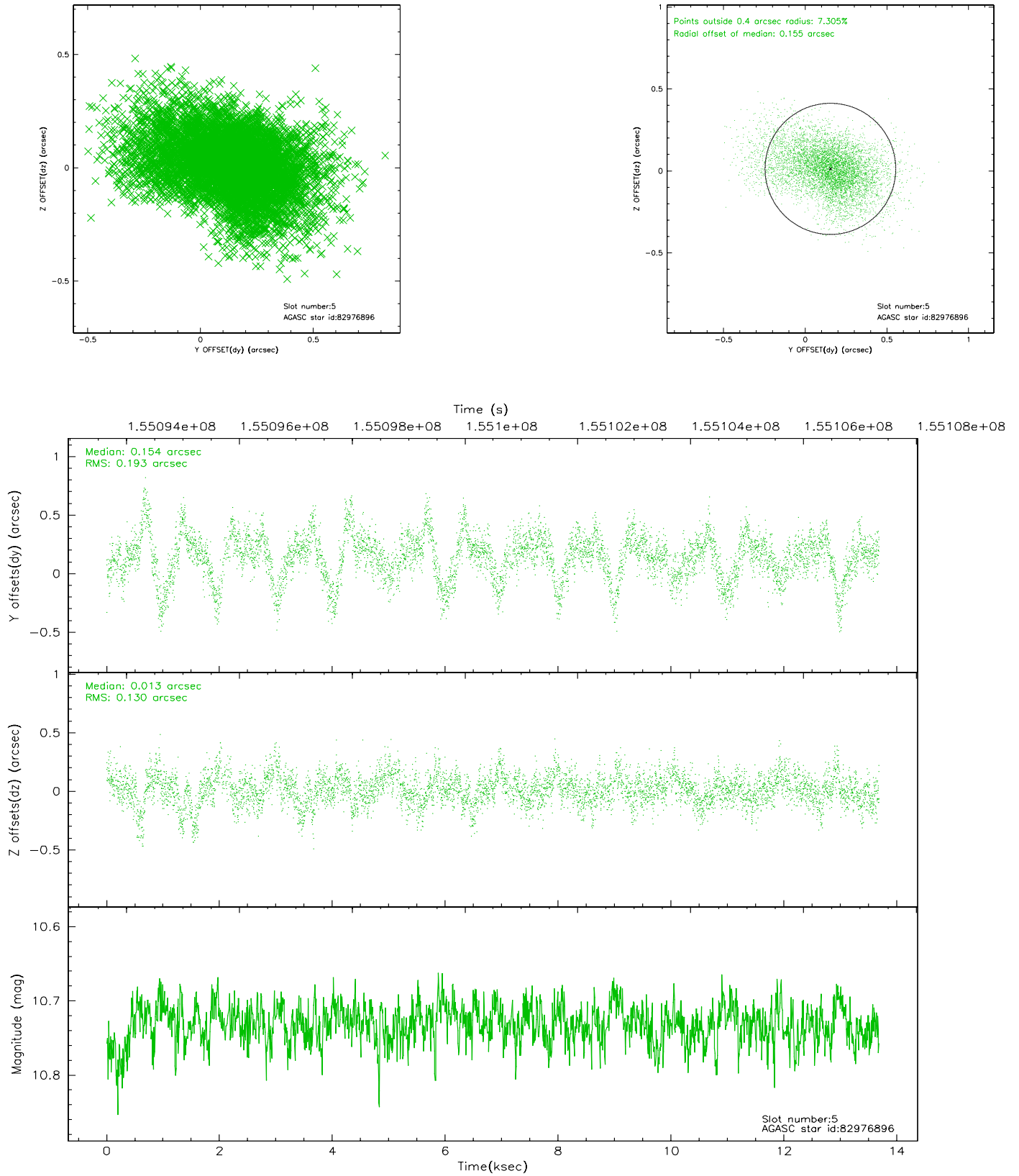
### 2.4.1 Slot 3



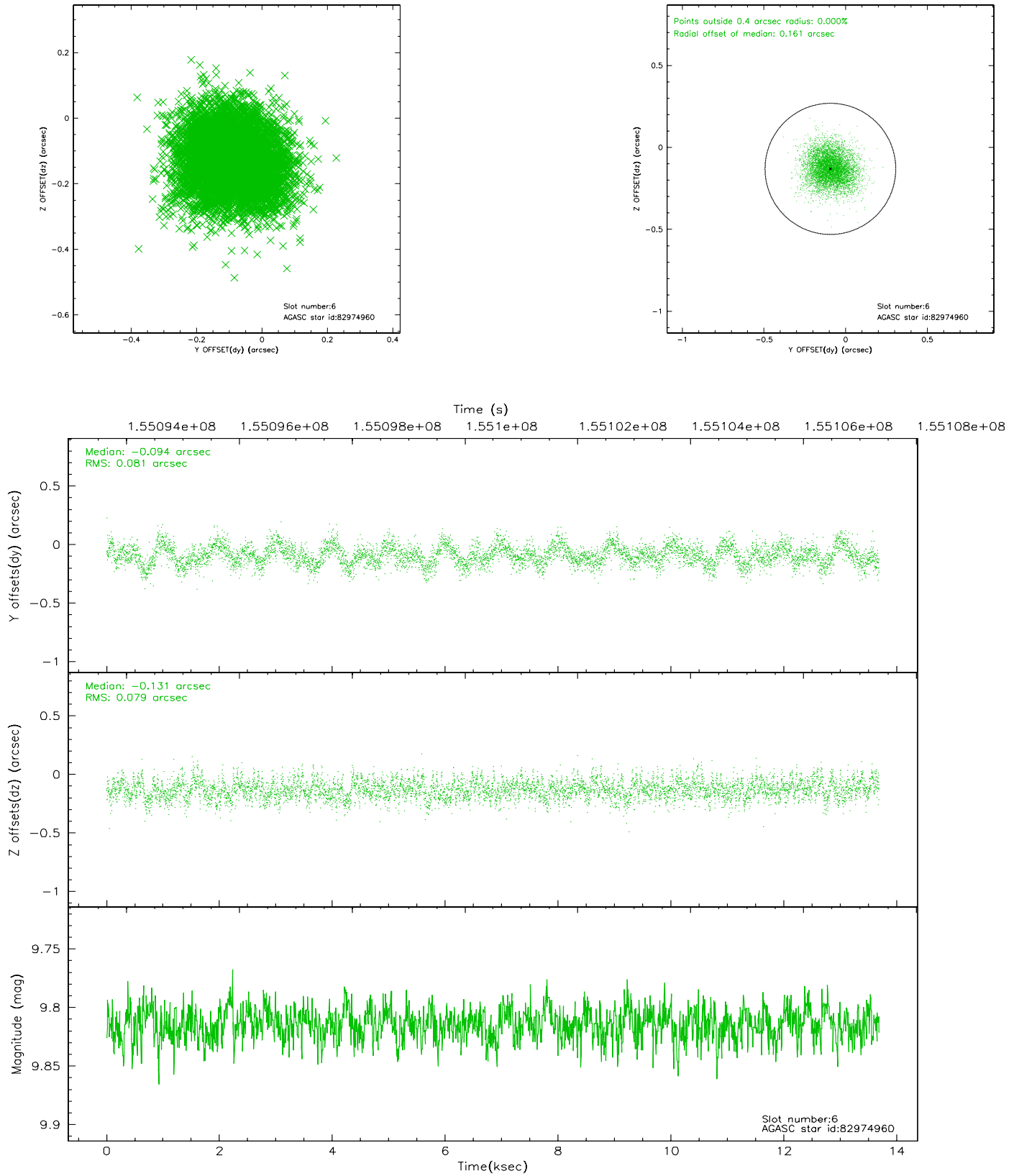
## 2.4.2 Slot 4



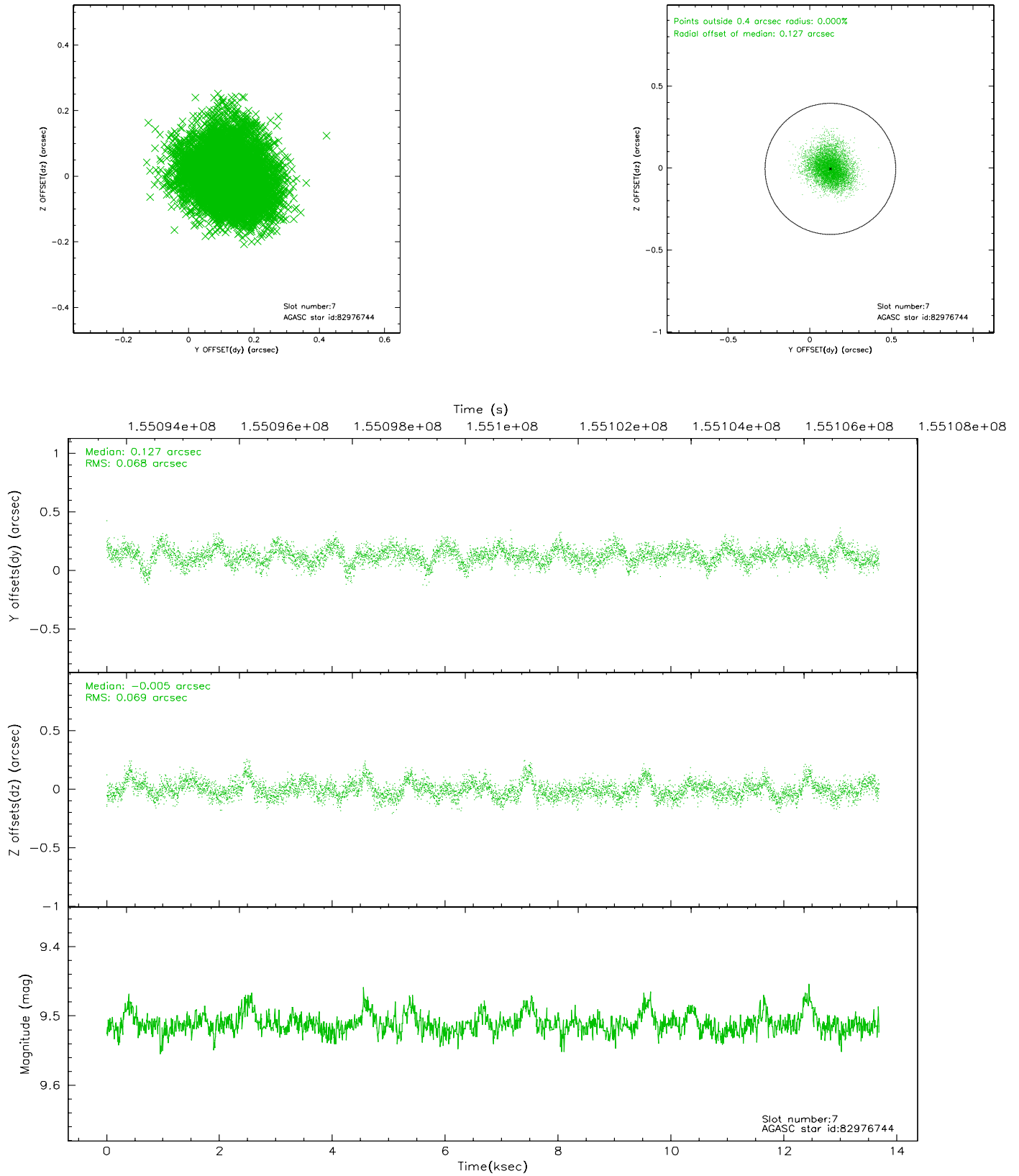
### 2.4.3 Slot 5



## 2.4.4 Slot 6

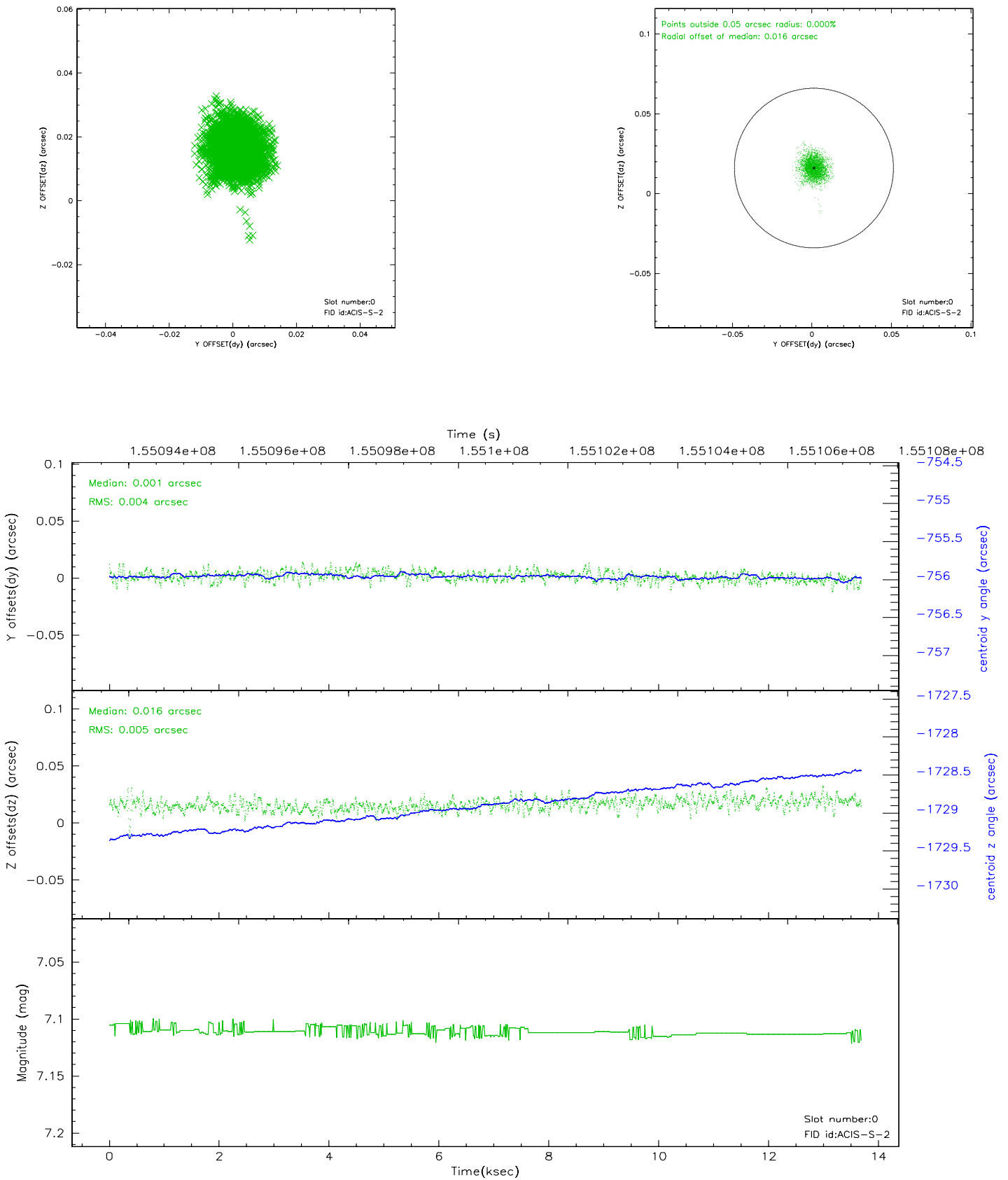


## 2.4.5 Slot 7

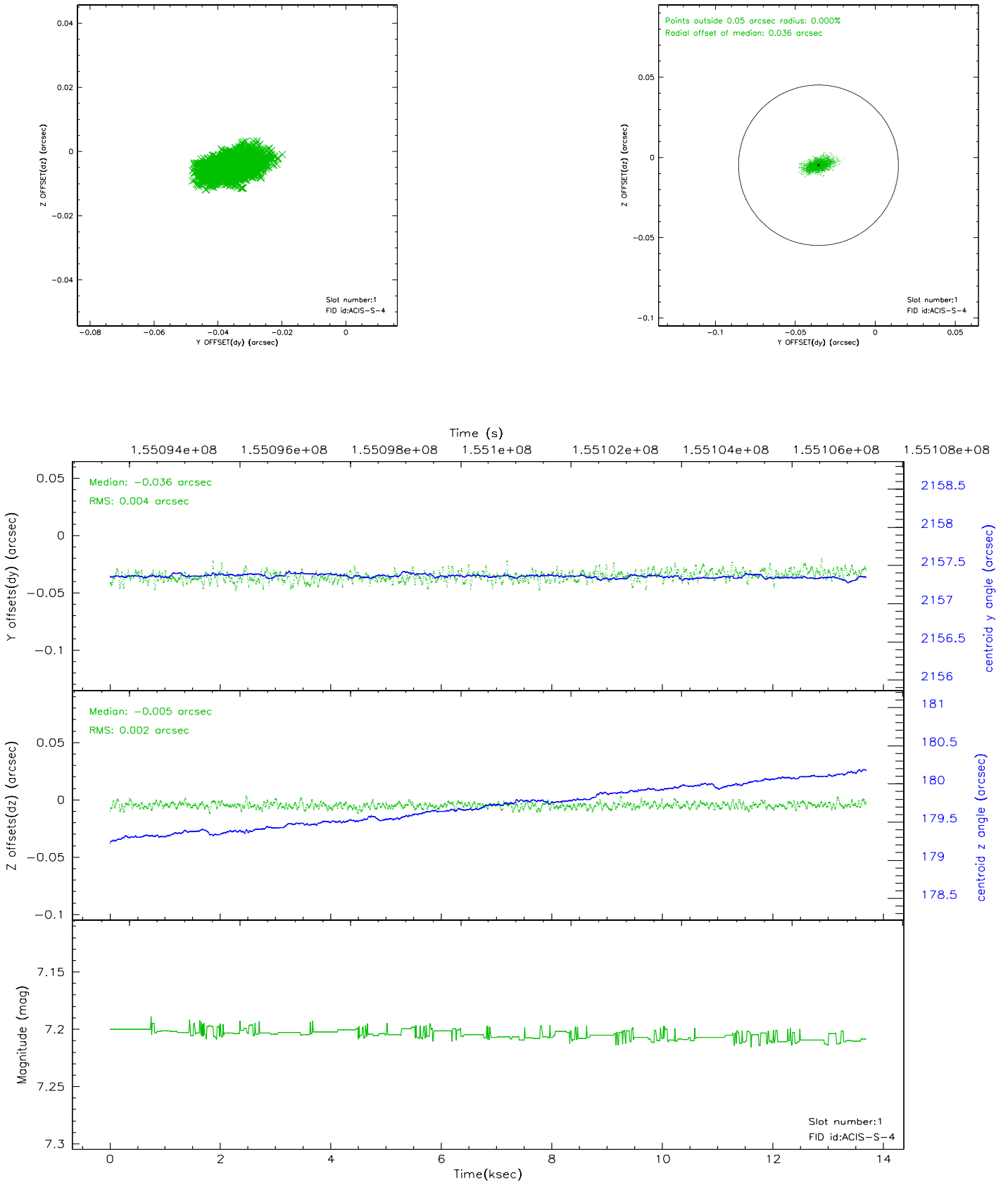


## 2.5 FID Slots

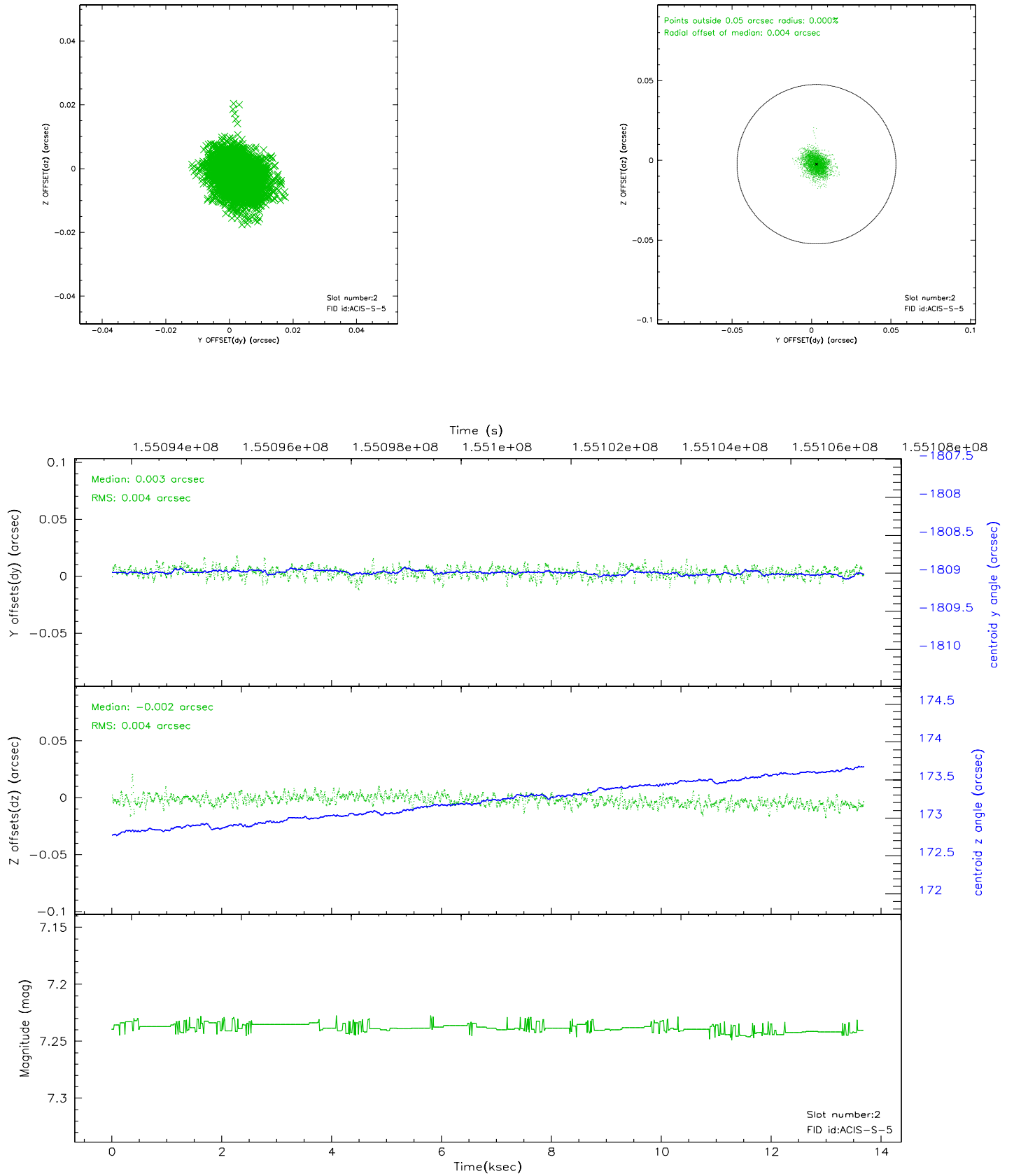
### 2.5.1 Slot 0



## 2.5.2 Slot 1



### 2.5.3 Slot 2





### 3 Point Sources

6.07 arcmin



## A Summary

### A.1 Status

V&V Scientist	Beth Sundheim
V&V Date (YYYY-MM-DD)	2006.10.13
V&V Edition	1
V&V Disposition and Status	OK
V&V Charge Time	13.684

### A.2 Comments