

V&V Reference Report

L2 ASCDS Version : 7.6.8

Observation 3966 - L2 Version 001
Chandra X-Ray Center

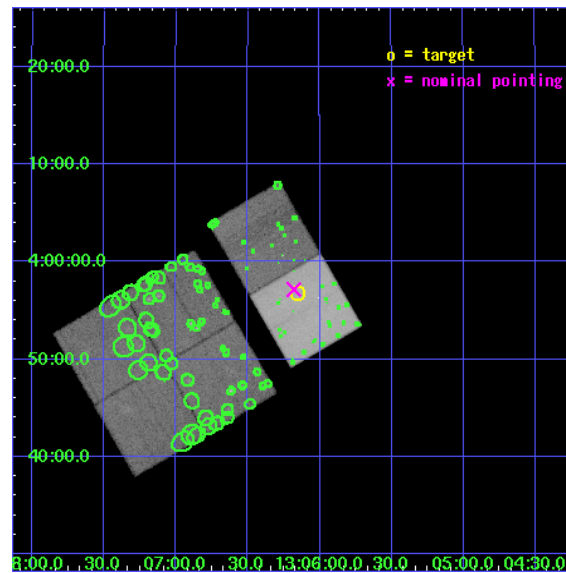
L2 Processing Date : Jun 27 2006

Contents

1	Front	2
2	OBI	3
2.1	OBI	3
2.1.1	Images	3
2.1.2	Bias	3
2.1.3	Parameters	4
2.1.4	Events	4
2.2	Compared Parameters	5
2.3	Aspect	6
2.4	Star Slots	9
2.4.1	Slot 3	9
2.4.2	Slot 4	10
2.4.3	Slot 5	11
2.4.4	Slot 6	12
2.4.5	Slot 7	13
2.5	FID Slots	14
2.5.1	Slot 0	14
2.5.2	Slot 1	15
2.5.3	Slot 2	16
3	Point Sources	17
A	Summary	18
A.1	Status	18
A.2	Comments	18

1 Front

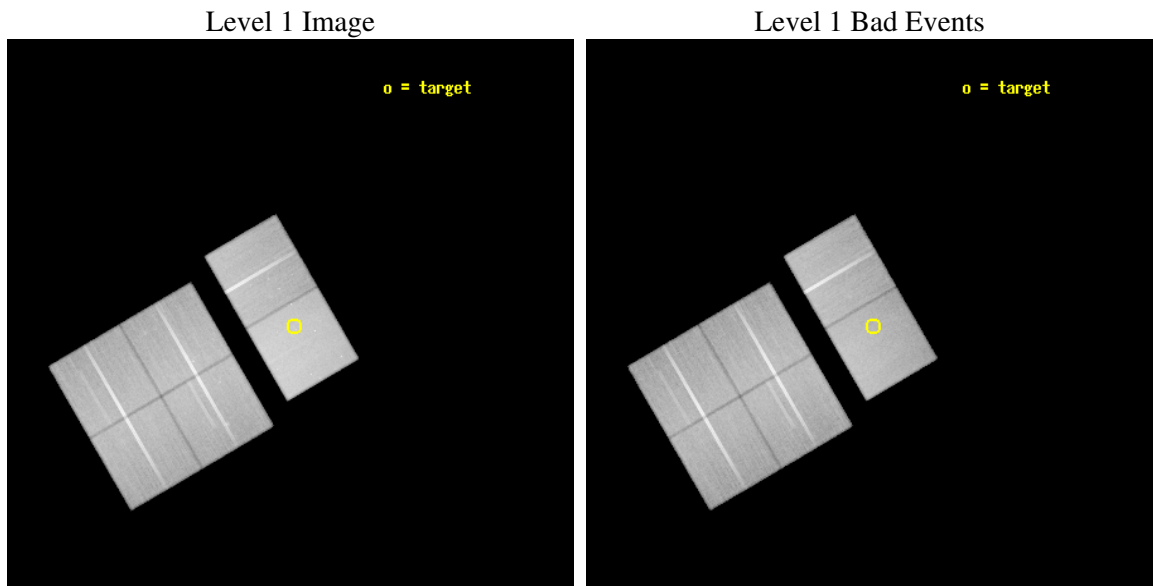
seq_num	700645
obs_id	3966
title	STUDY OF A QUASAR AND X-RAY JET AT REDSHIFT Z=5.99
observer	Dr. Daniel Schwartz
object	SDSS 1306+0356 JET
dtcycle	0
cycle	P
ra_targ	196.53875
dec_targ	3.945417
ra_nom	196.54501406395
dec_nom	3.9527745430489
roll_nom	59.774752511752
revision	3
ontime	119753.59955388
livetime	118237.20736937
ontime0	119711.46677125
ontime1	119743.87653348
ontime2	119679.0566304
ontime3	119747.11754358
ontime6	119750.35856369
ontime7	119753.59955388
l2events	682439



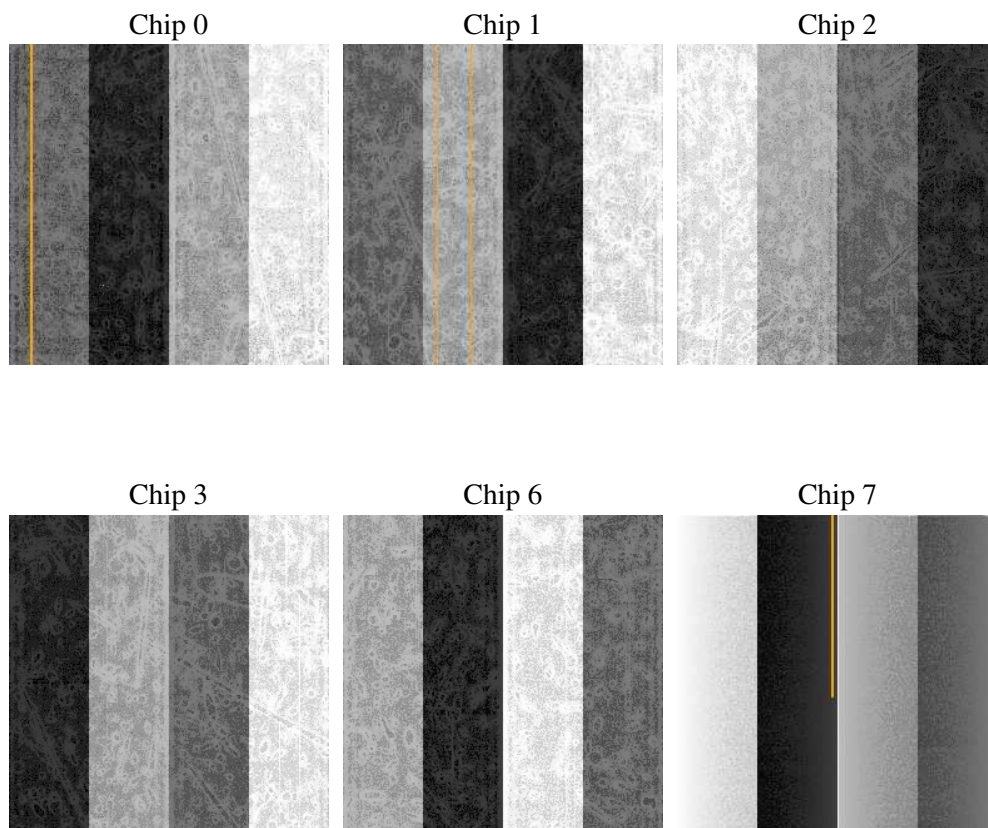
2 OBI

2.1 OBI

2.1.1 Images



2.1.2 Bias



2.1.3 Parameters

obi_num	1
ascdsver	7.6.8
caldsver	3.2.2
date	2006-06-27T05:03:14
revision	3

sched_exp_time	120000.000000
ontime	119758.17985189
ontime0	119716.04706925
ontime1	119748.45683149
ontime2	119683.63692841
ontime3	119751.69784158
ontime6	119754.9388617
ontime7	119758.17985189
l1events	3956978

2.1.4 Events

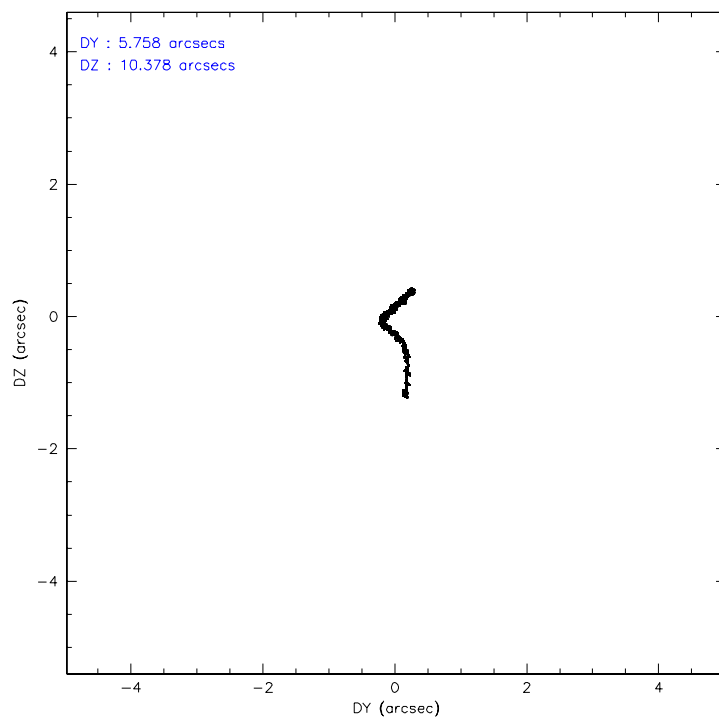
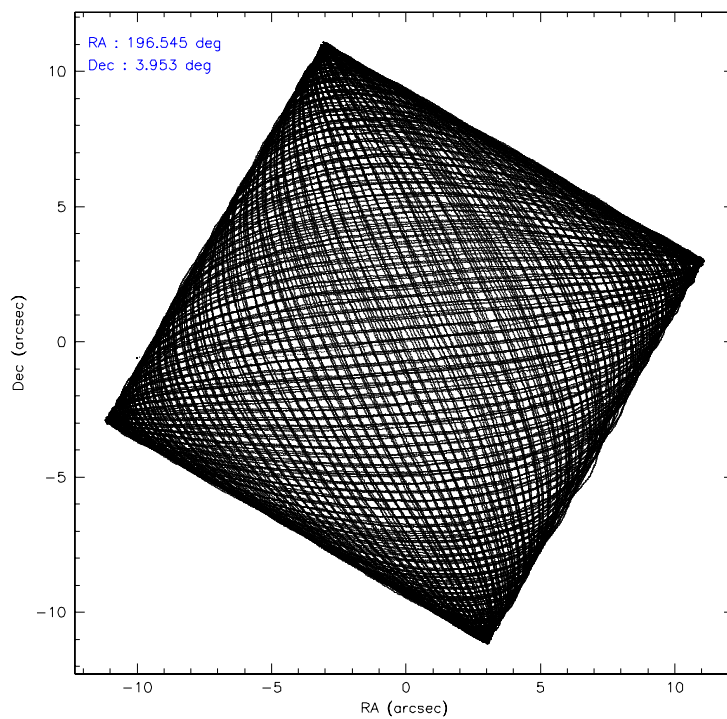
	ccd 0	ccd 1	ccd 2	ccd 3	ccd 6	ccd 7
level 1 events	593508	578274	619660	624551	653695	887290
rejected events	511921	496765	539051	545841	572746	546529
rejected %	86%	85%	86%	87%	87%	61%

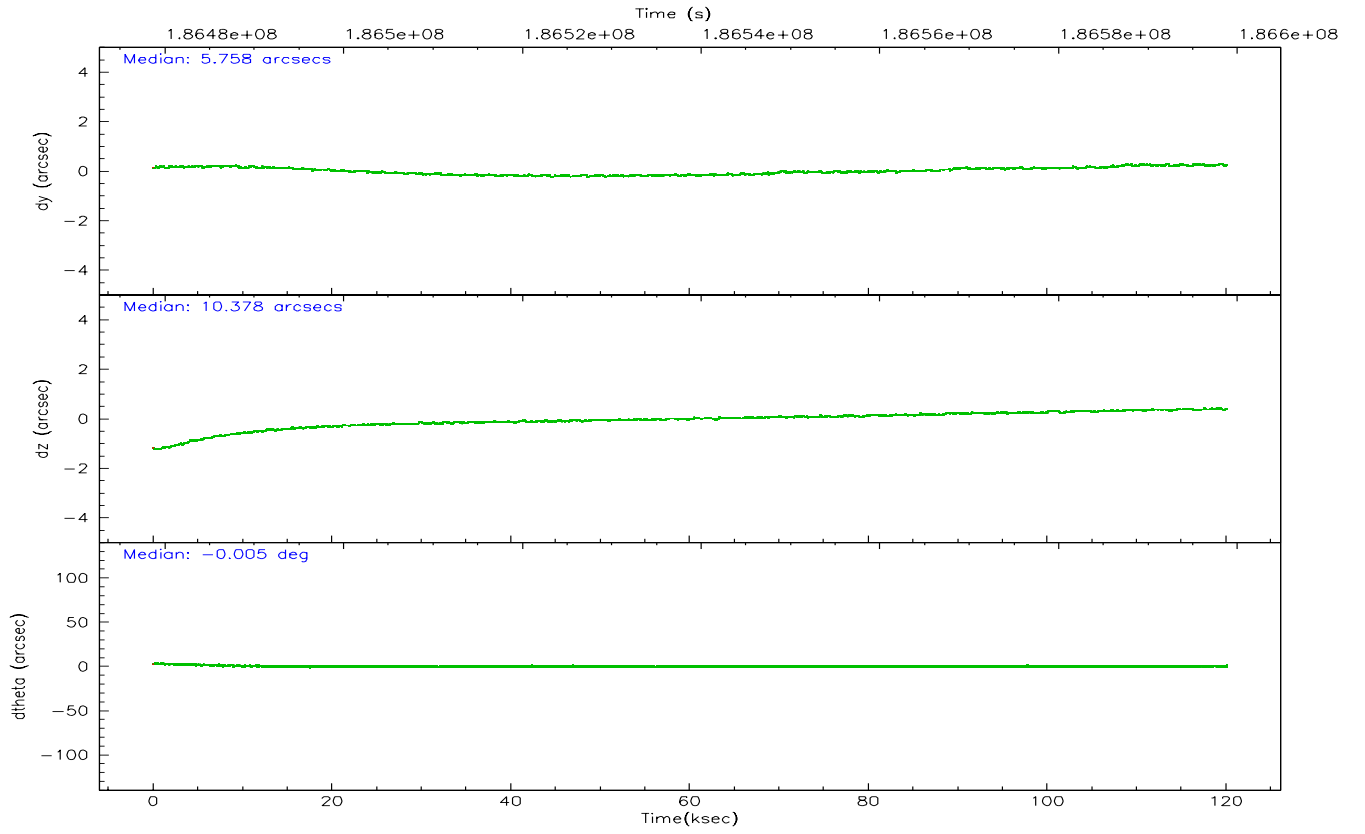
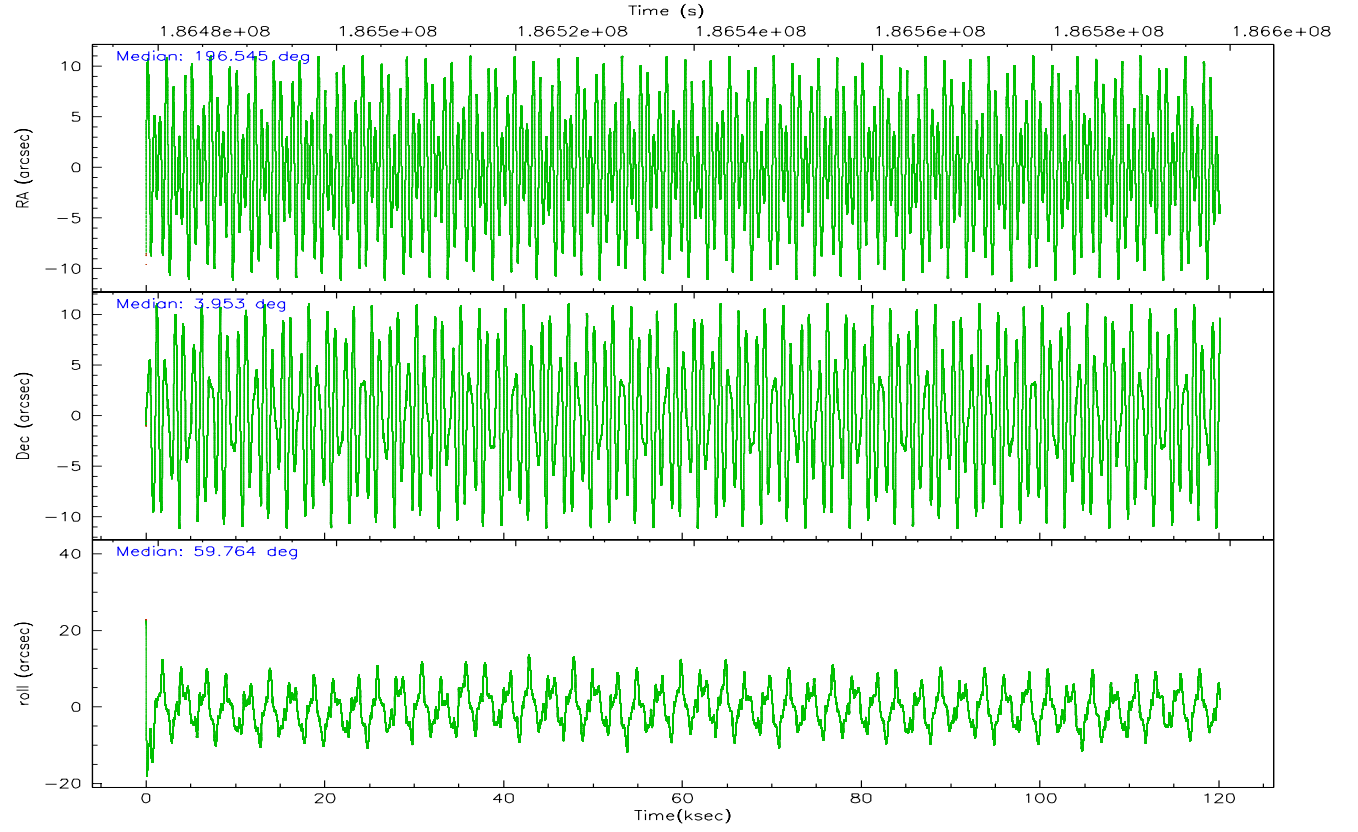
	ccd 0	ccd 1	ccd 2	ccd 3	ccd 6	ccd 7
grade 0 events	34901	31944	37164	34909	32846	22712
	5%	5%	5%	5%	5%	2%
grade 1 events	398	269	341	380	332	493
	0%	0%	0%	0%	0%	0%
grade 2 events	17118	17952	15913	15065	16835	83718
	2%	3%	2%	2%	2%	9%
grade 3 events	7936	7949	7285	7472	7671	17814
	1%	1%	1%	1%	1%	2%
grade 4 events	7306	7908	7397	7506	7482	17323
	1%	1%	1%	1%	1%	1%
grade 5 events	27706	27356	25454	29239	30832	58984
	4%	4%	4%	4%	4%	6%
grade 6 events	14351	15763	12894	13770	16122	199210
	2%	2%	2%	2%	2%	22%
grade 7 events	483792	469133	513212	516210	541575	487036
	81%	81%	82%	82%	82%	54%

2.2 Compared Parameters

Parameter	Planned	Actual	Parameter	Planned	Actual
Instrument	ACIS	ACIS	Obspar format version number	6	6
Detector	ACIS-012367	ACIS-012367	Obspar file type	PREDICTED	ACTUAL
Grating	NONE	NONE	Obspar update status	NONE	UPDATED
Data mode	VFAINT	VFAINT	On-chip summing requested	N	N
Observation mode	POINTING	POINTING	Subarray requested	NONE	NONE
Pointing RA	196.545285	196.5450140639503	Alternating exposures requested	N	N
Pointing Dec	3.925564	3.952774543048883	Primary exposure time	0.000000	3.2
Pointing Roll	59.618105	59.77475251175181			
SIM focus pos (mm)	-0.684267	-0.6828225247311905			
SIM defocus (mm)	0	0.001444936568705701			
SIM translation stage pos (mm)	-190.132523	-190.1400660498719			
SIM translation stage offset (mm)	0	0.00754346686406393			
Observation start time	186478846.184000	186477864.4503			
Observation start date	2003-11-29T07:39:42	2003-11-29T07:24:24			
Observation end time	186598846.184000	186599748.74309			
Observation end date	2003-11-30T16:59:42	2003-11-30T17:15:48			
Read mode	TIMED	TIMED			

2.3 Aspect



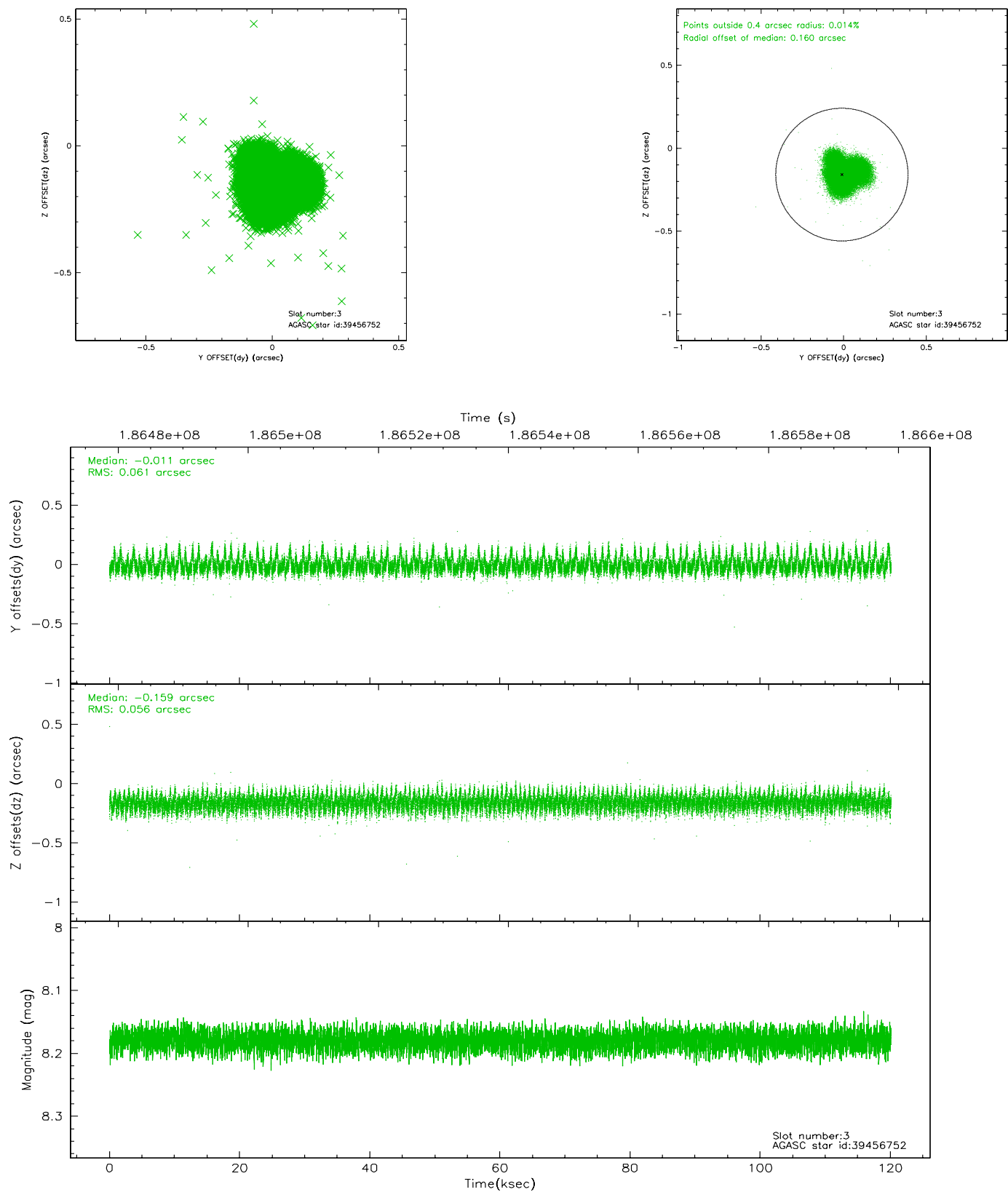


Slot Statistics

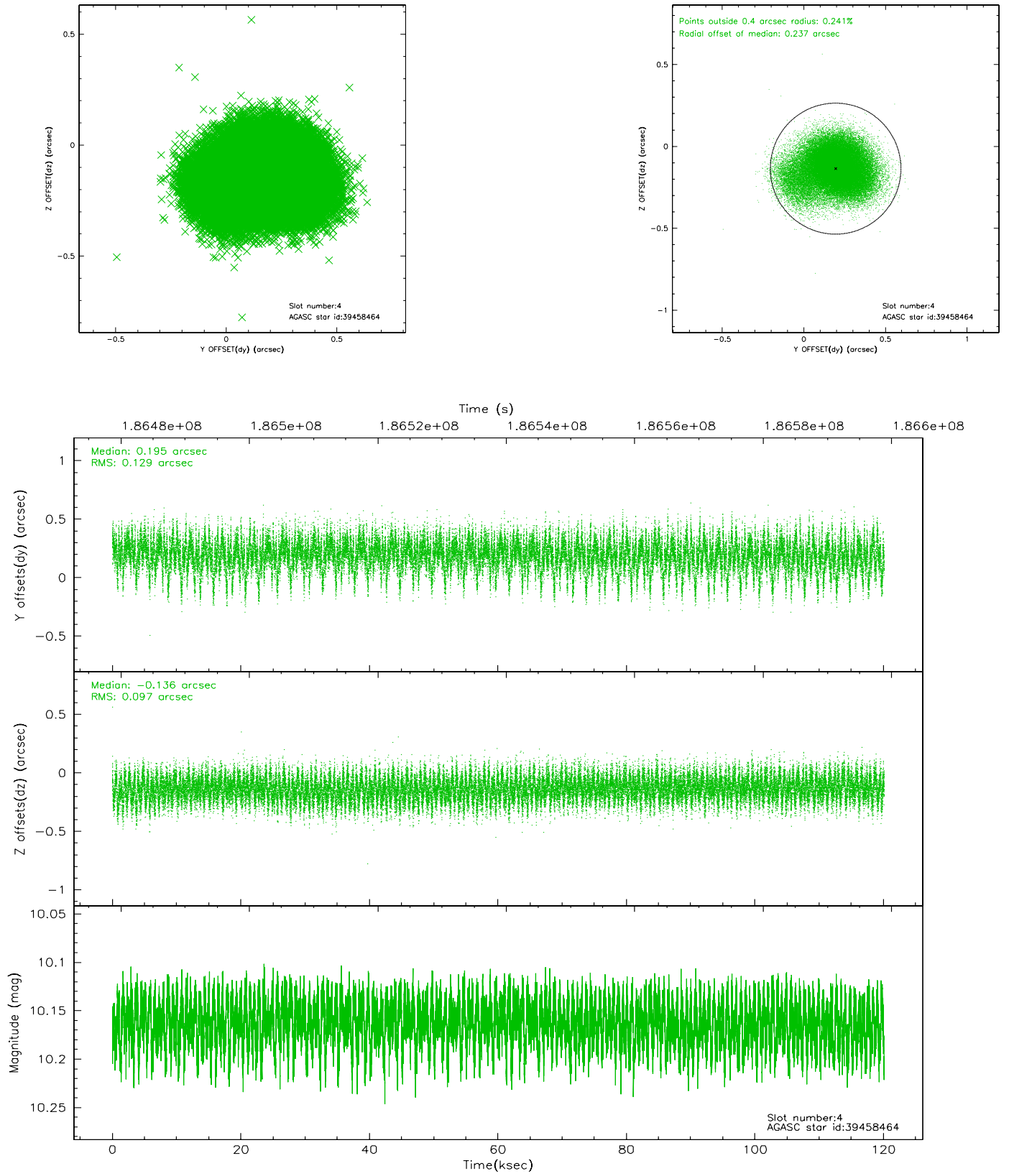
slot	status	id	mag	n_pts	med_dy	med_dz	dr1	dr2	ra	dec	mean_y	mean_z
0	FID	ACIS-S-2	7.10	29305	-0.056	-0.002	0.008	0.019	0.000000	0.000000	-758.52	-1731.60
1	FID	ACIS-S-4	7.20	29305	0.050	0.028	0.007	0.032	0.000000	0.000000	2154.88	177.06
2	FID	ACIS-S-5	7.23	29306	-0.024	-0.016	0.008	0.016	0.000000	0.000000	-1811.48	170.52
3	GUIDE	39456752	8.18	58608	-0.011	-0.159	0.088	0.145	196.438082	4.090522	317.61	632.19
4	GUIDE	39458464	10.16	58569	0.195	-0.136	0.169	0.290	196.240566	3.720727	-1189.36	571.45
5	GUIDE	39459544	8.27	58608	0.048	0.017	0.062	0.098	196.876637	3.937077	638.16	-1005.32
6	GUIDE	39460960	8.78	58595	-0.143	0.160	0.071	0.114	197.081855	4.096991	1507.86	-1349.06
7	GUIDE	39461336	9.65	58570	-0.086	0.116	0.117	0.191	197.054819	3.776828	464.17	-1848.32

2.4 Star Slots

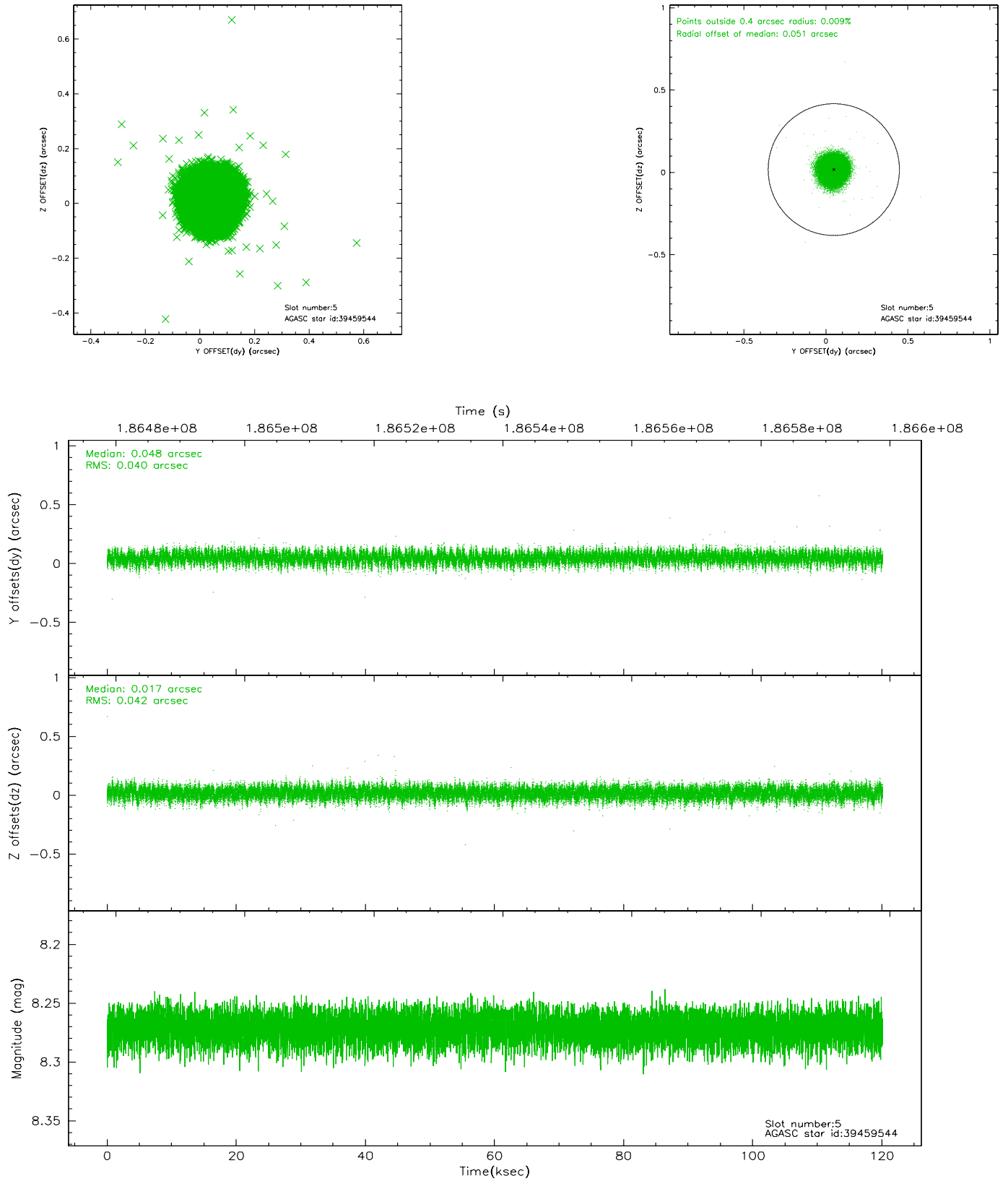
2.4.1 Slot 3



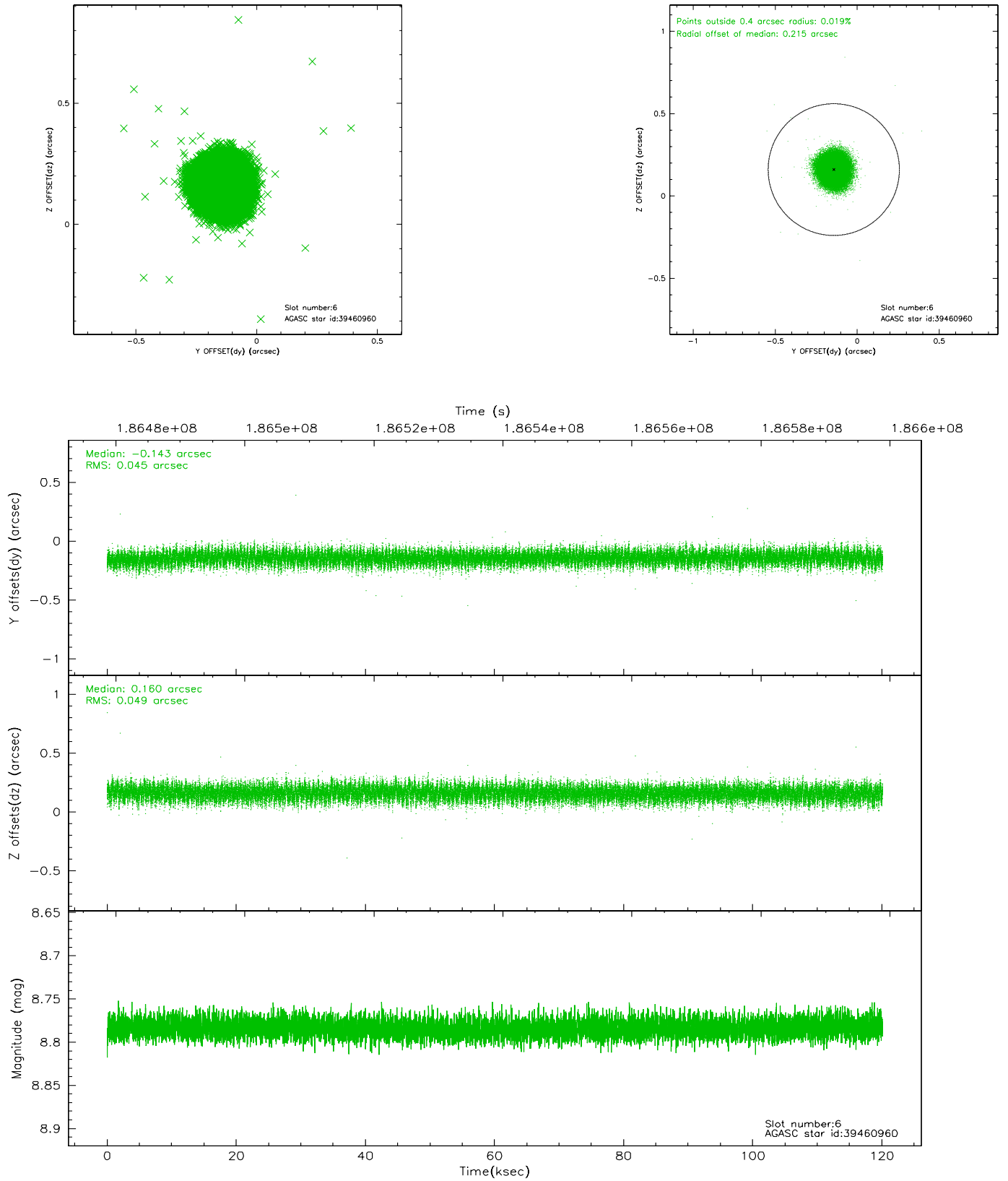
2.4.2 Slot 4



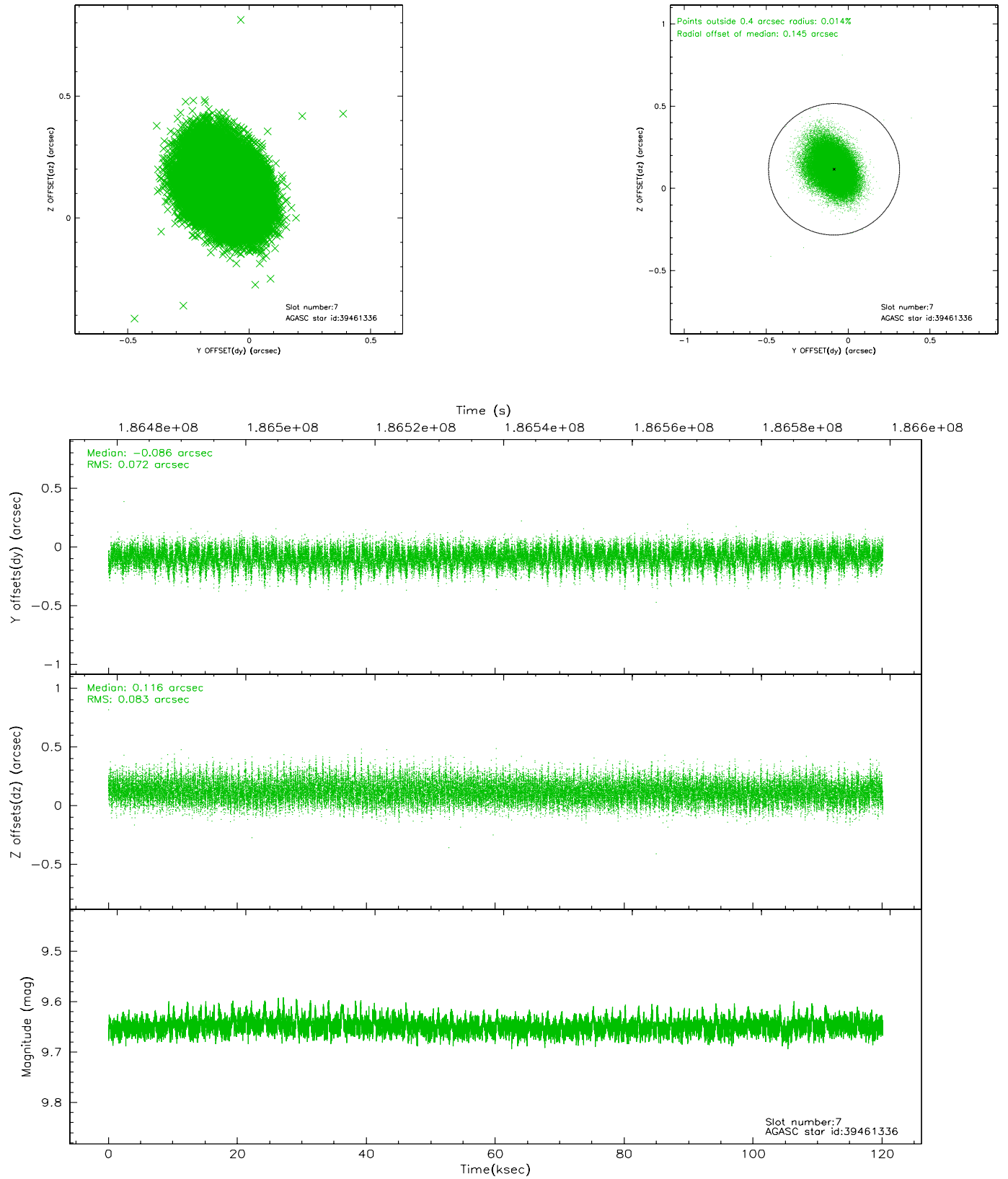
2.4.3 Slot 5



2.4.4 Slot 6

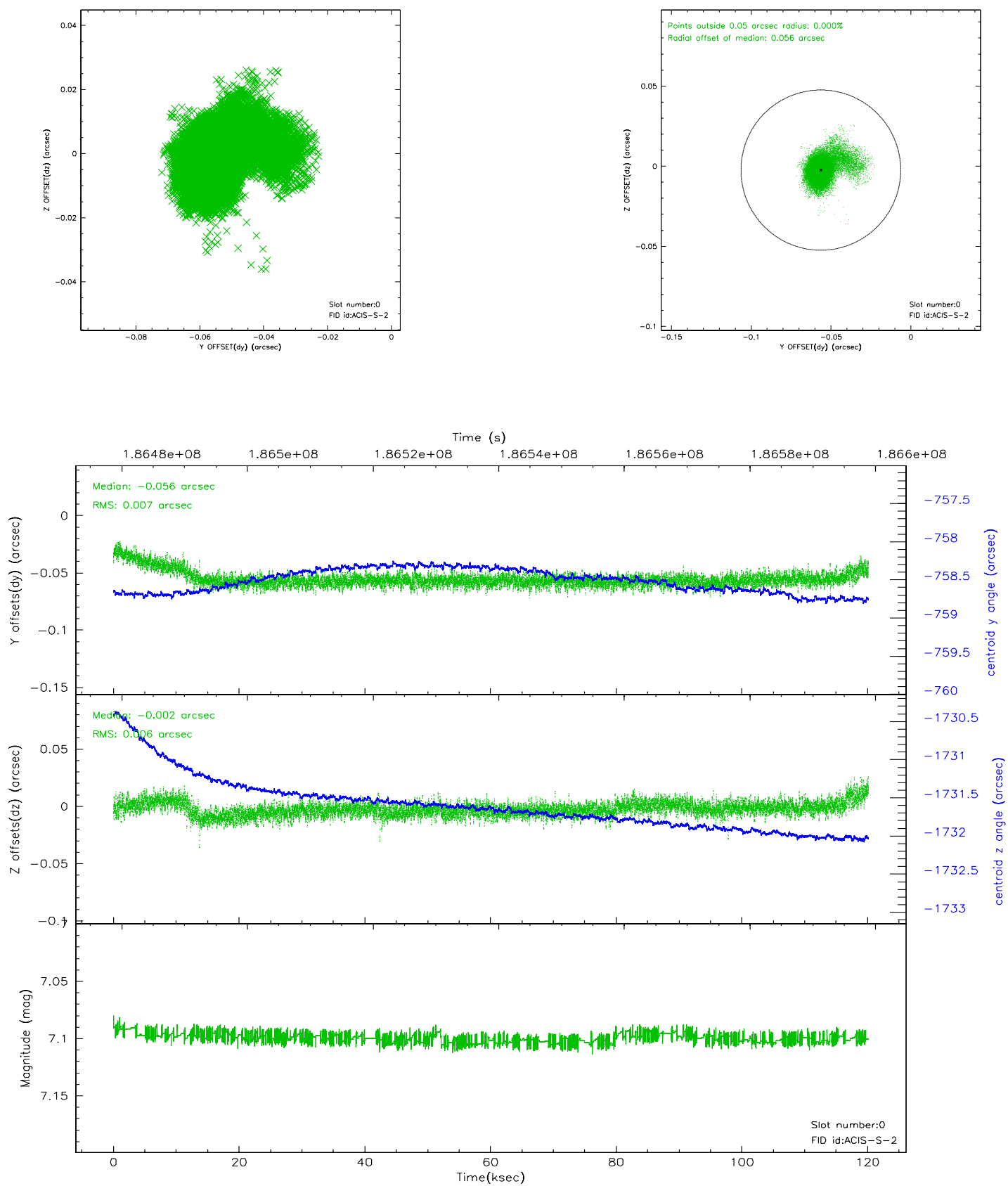


2.4.5 Slot 7

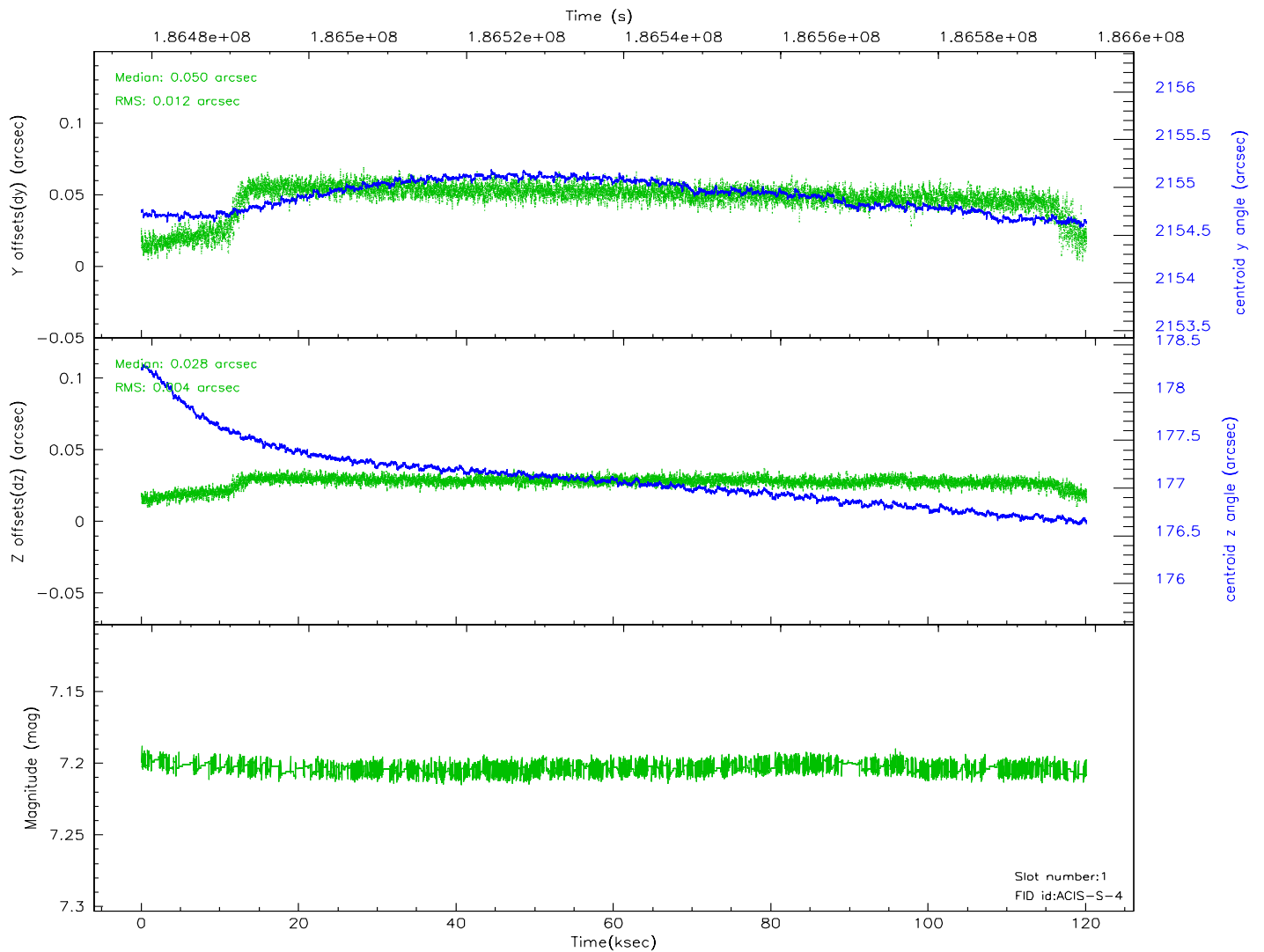
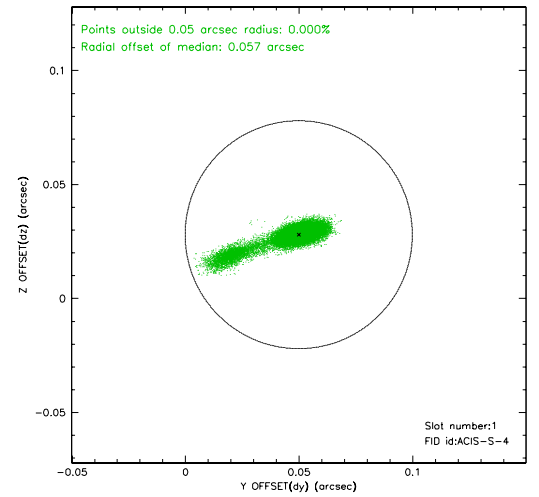
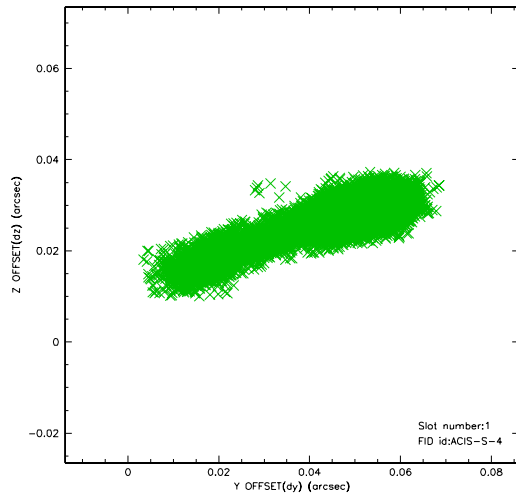


2.5 FID Slots

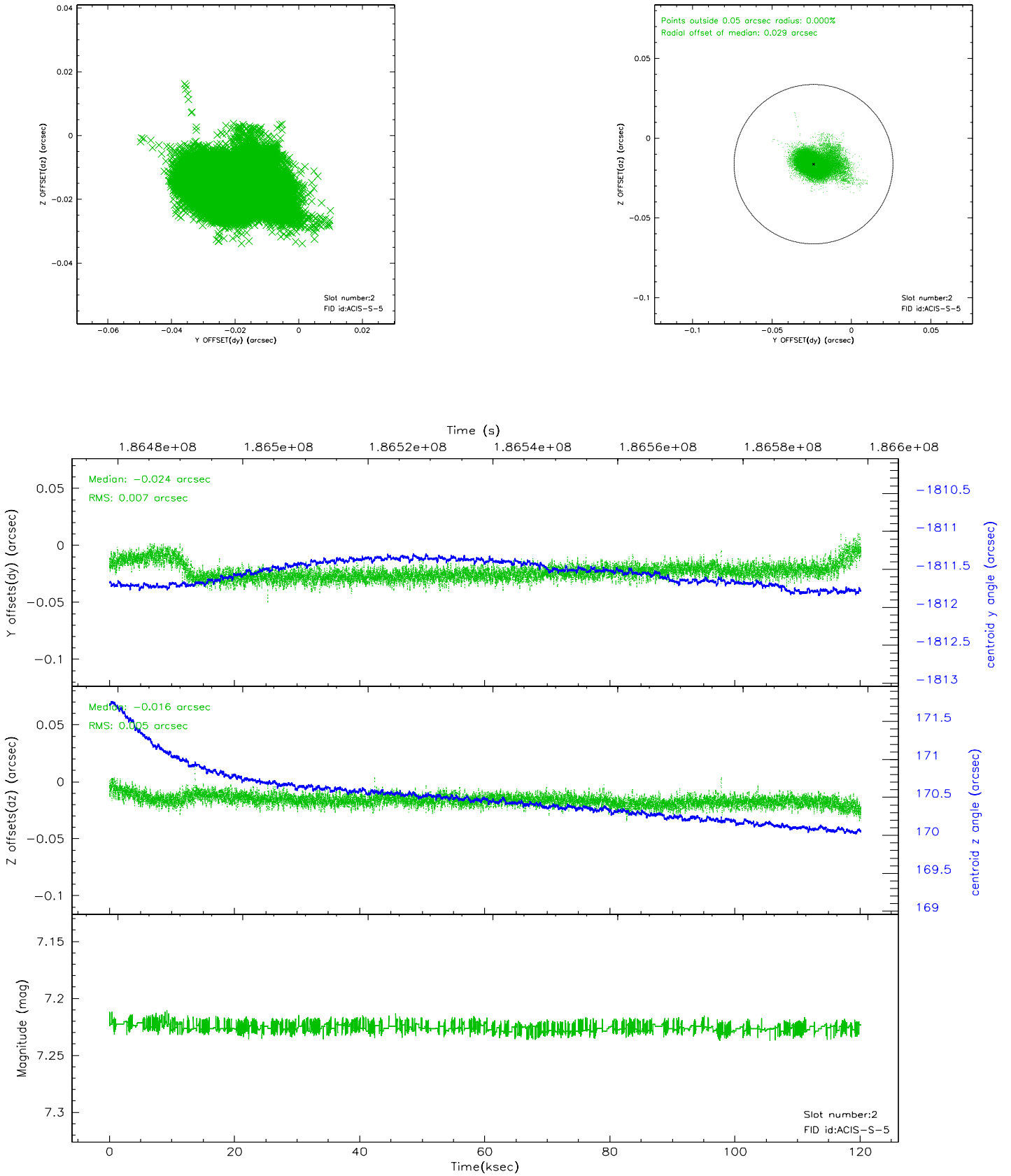
2.5.1 Slot 0



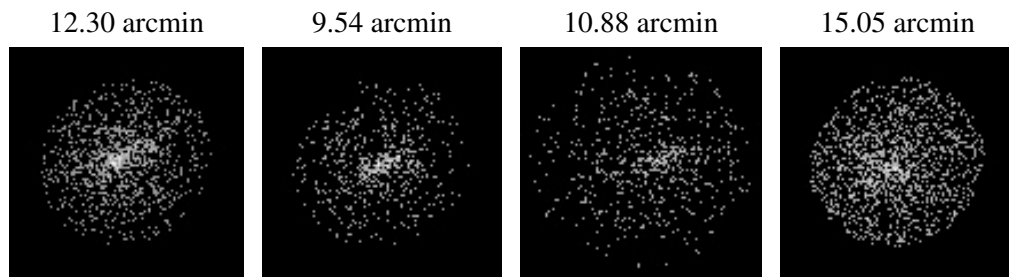
2.5.2 Slot 1



2.5.3 Slot 2



3 Point Sources



A Summary

A.1 Status

V&V Scientist	Beth Sundheim
V&V Date (YYYY-MM-DD)	2006.06.27
V&V Edition	1
V&V Disposition and Status	OK
V&V Charge Time	119.756

A.2 Comments