

# V&V Reference Report

## L2 ASCDS Version : 8.5.1.1

Observation 3896 - L2 Version 7  
Chandra X-Ray Center

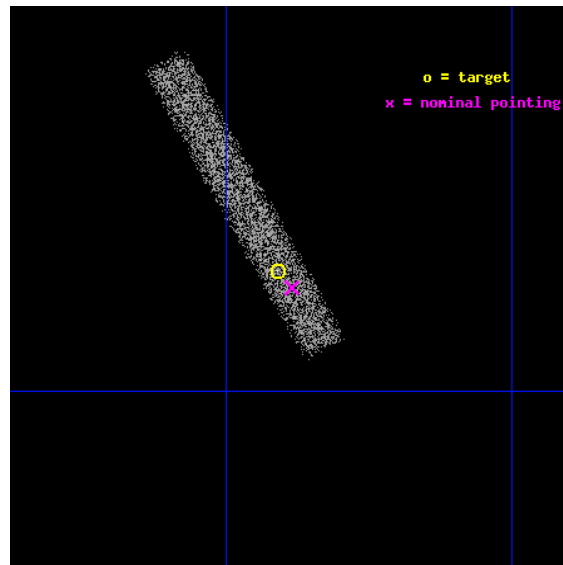
L2 Processing Date : Feb 13 2013

## Contents

<b>1</b>	<b>Front</b>	<b>2</b>
<b>2</b>	<b>OBI</b>	<b>3</b>
2.1	OBI . . . . .	3
2.1.1	Images . . . . .	3
2.1.2	Bias . . . . .	3
2.1.3	Parameters . . . . .	4
2.1.4	Events . . . . .	4
2.2	Compared Parameters . . . . .	5
2.3	Aspect . . . . .	6
2.4	Star Slots . . . . .	9
2.4.1	Slot 3 . . . . .	9
2.4.2	Slot 4 . . . . .	10
2.4.3	Slot 5 . . . . .	11
2.4.4	Slot 6 . . . . .	12
2.4.5	Slot 7 . . . . .	13
2.5	FID Slots . . . . .	14
2.5.1	Slot 0 . . . . .	14
2.5.2	Slot 1 . . . . .	15
2.5.3	Slot 2 . . . . .	16
<b>A</b>	<b>Summary</b>	<b>17</b>
A.1	Status . . . . .	17
A.2	Comments . . . . .	17

# 1 Front

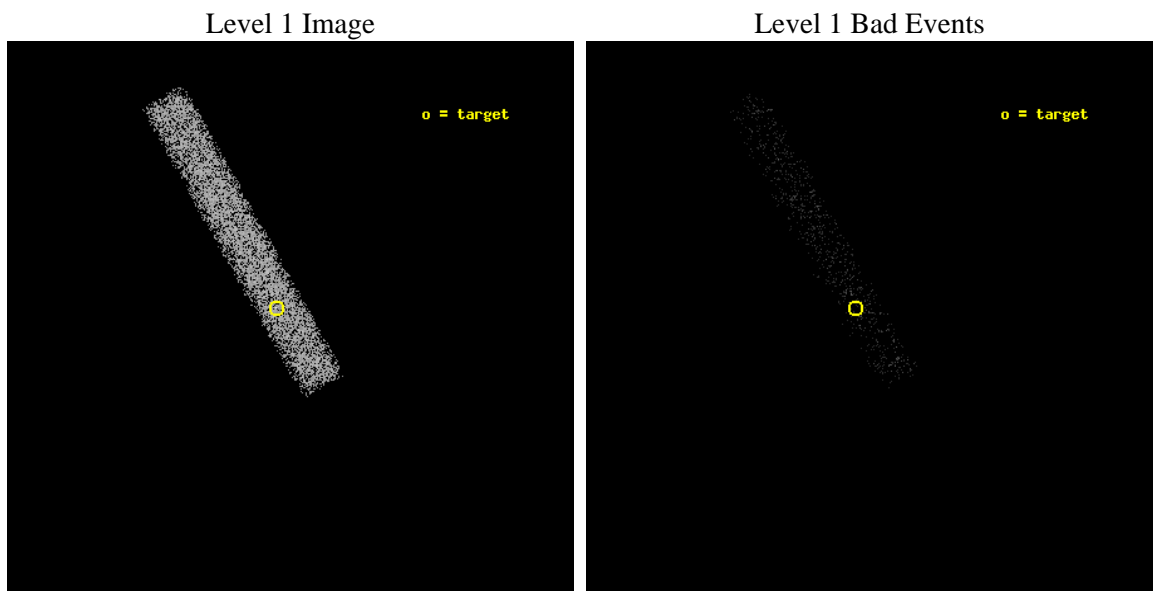
seq_num	500375	Sequence number
obs_id	3896	Observation id
title	IS AX J1845-0258 AN ANOMALOUS X-RAY PULSAR?	Proposal title
observer	Dr. Victoria Kaspi	Principal investigator
object	AX J1845-0258	Source name
dtcycle	0	&#160
cycle	P	events from which exps? Prim/Second/Both
ra_targ	281.2275	Observer's specified target RA [deg]
dec_targ	-2.948056	Observer's specified target Dec [deg]
ra_nom	281.22138721098	Nominal RA [deg]
dec_nom	-2.9555066576211	Nominal Dec [deg]
roll_nom	240.68079441963	Nominal Roll [deg]
revision	7	Processing version of data
ontime	7019.2001045644	Sum of GTIs [s]
livetime	6366.0439910797	Livetime [s]
ontime7	7019.2001045644	Sum of GTIs [s]
l2events	7206	Number of level 2 events



## 2 OBI

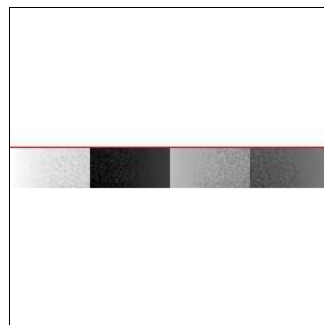
### 2.1 OBI

#### 2.1.1 Images



#### 2.1.2 Bias

Chip 7



### 2.1.3 Parameters

obi_num	0	Obi number	sched_exp_time	11786.670000	[s] Scheduled observation exposure time
ascdsver	8.5.1.1	Processing system revision	ontime	7019.2001045644	Sum of GTIs [s]
caldsver	4.5.5	&#160	ontime7	7019.2001045644	Sum of GTIs [s]
date	2013-02-13T03:39:08	Date and time of file creation	l1events	11783	Number of level 1 events
revision	7	Processing version of data			

### 2.1.4 Events

	<b>ccd 7</b>
level 1 events	11783
rejected events	4396
rejected %	37%

	<b>ccd 7</b>
grade 0 events	876
	7%
grade 1 events	7
	0%
grade 2 events	1356
	11%
grade 3 events	783
	6%
grade 4 events	693
	5%
grade 5 events	745
	6%
grade 6 events	3809
	32%
grade 7 events	3514
	29%

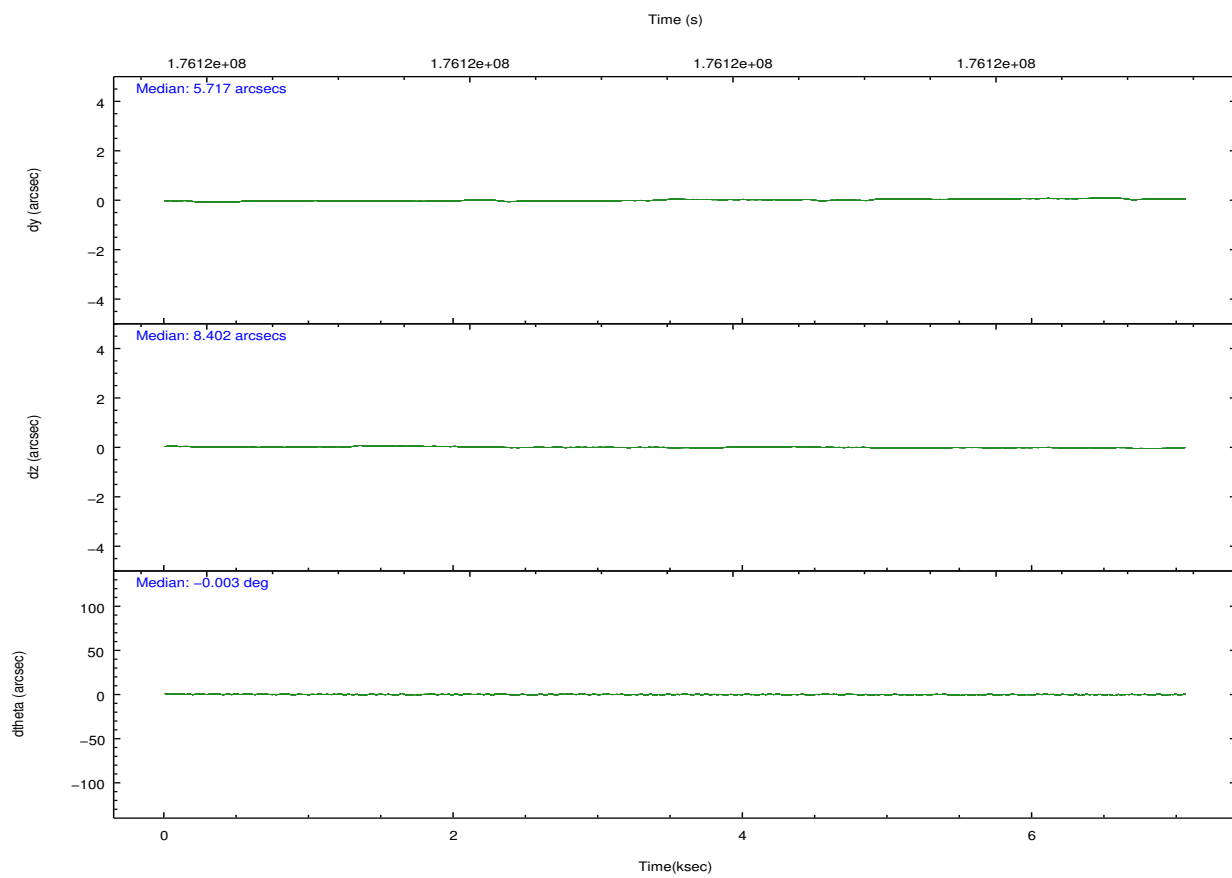
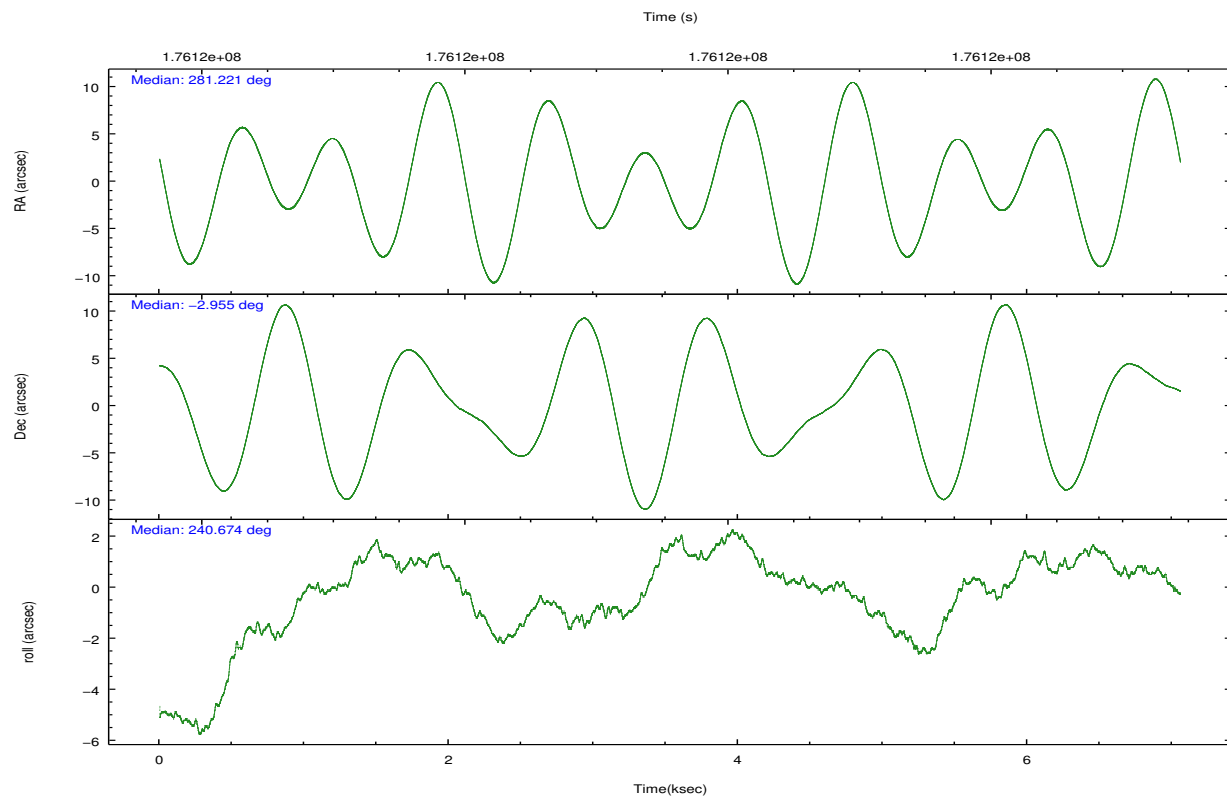


## 2.2 Compared Parameters

Parameter	Planned	Actual
Instrument	ACIS	ACIS
Detector	ACIS-7	ACIS-7
Grating	NONE	NONE
Data mode	VFAINT	VFAINT
Observation mode	POINTING	POINTING
[deg] Pointing RA	281.220654	281.2213872109848
[deg] Pointing Dec	-2.928303	-2.955506657621121
[deg] Pointing Roll	240.524106	240.6807944196267
[mm] SIM focus pos	-0.6828225247311905	-0.6828225247311905
[mm] SIM defocus	0.001444942264670179	0.001444942264670179
[mm] SIM translation stage pos	-190.1400660498719	-190.1400660498719
[mm] SIM translation stage offset	0.007542945904702947	0.007542945904702947
[s] Observation start time (MET)	176118037.184000	176118037.184
Observation start date	2003-08-01T09:39:33	2003-08-01T09:40:37
[s] Observation end time (MET)	176125098.000000	176125098
Observation end date	2003-08-01T11:38:18	2003-08-01T11:38:17
Read mode	TIMED	TIMED

Parameter	Planned	Actual
Obspar format version number	7	7
Obspar file type	PREDICTED	ACTUAL
Obspar update status	OVERRIDE	OVERRIDE
Number of optional ACIS chips dropped	0	0
On-chip summing requested	N	N
Subarray requested	CUSTOM	CUSTOM
Subarray start row	449	449
Subarray row count	128	128
Alternating exposures requested	N	N
[s] Primary exposure time	0.4	0.4

## 2.3 Aspect

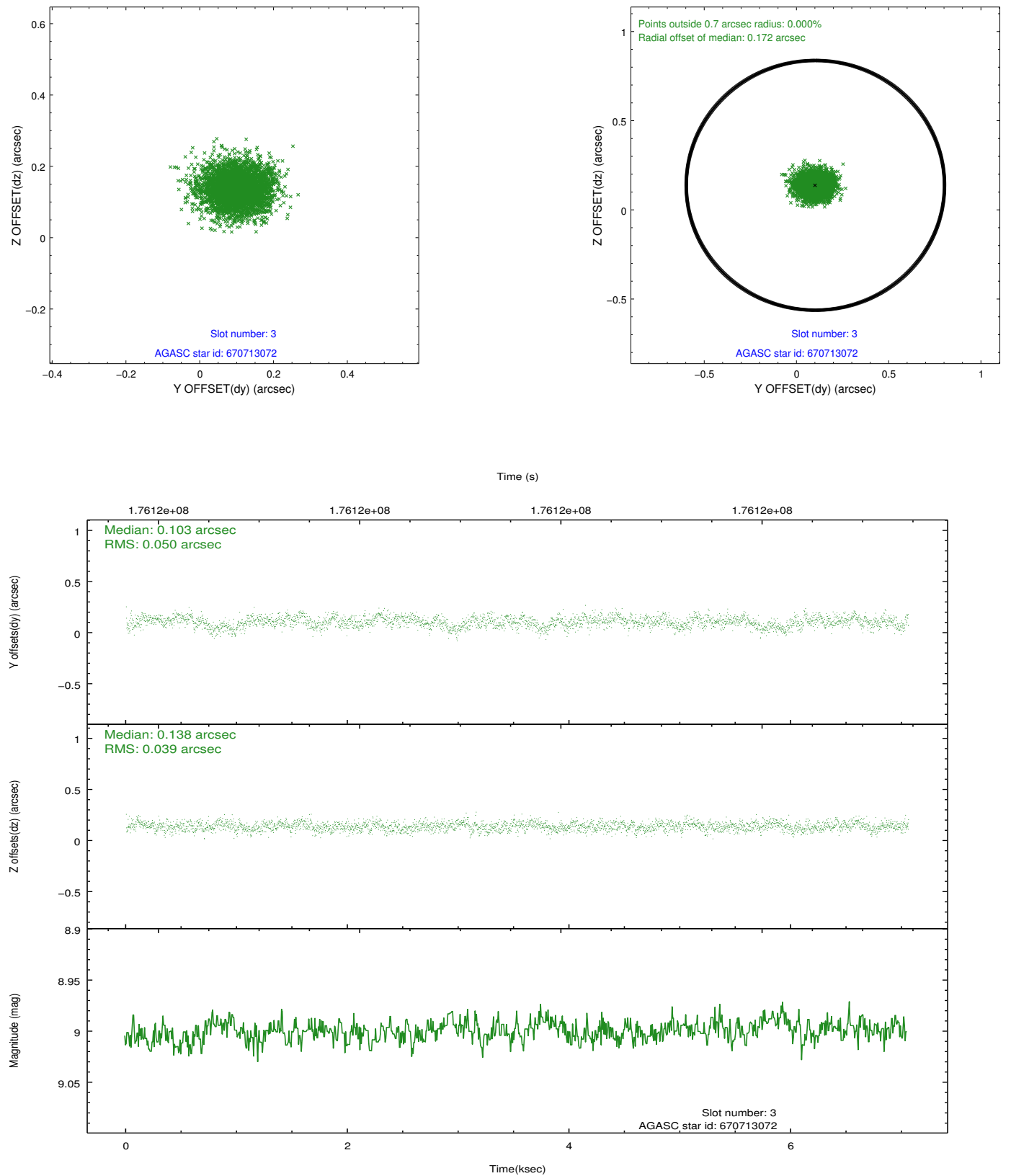


### Slot Statistics

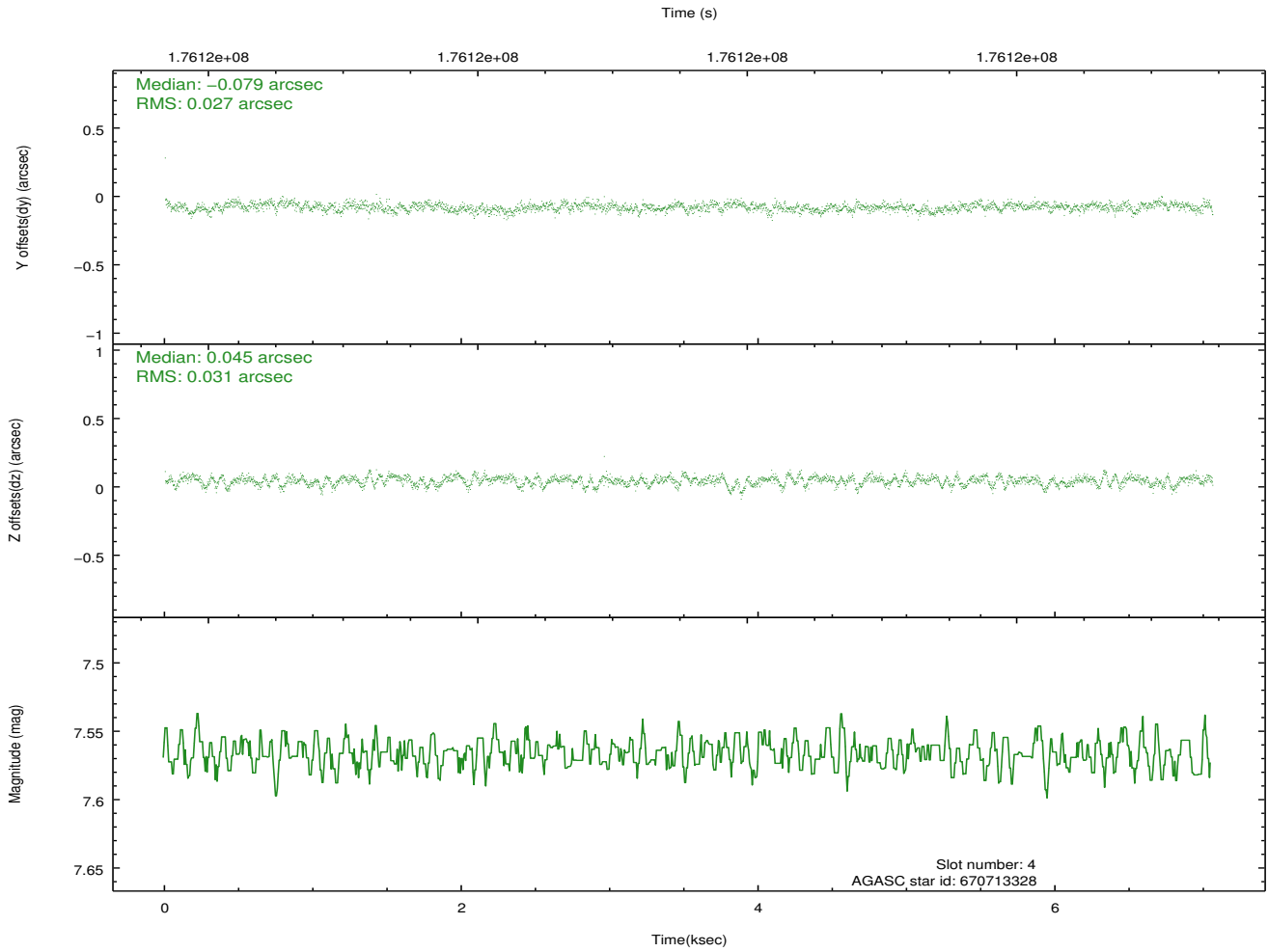
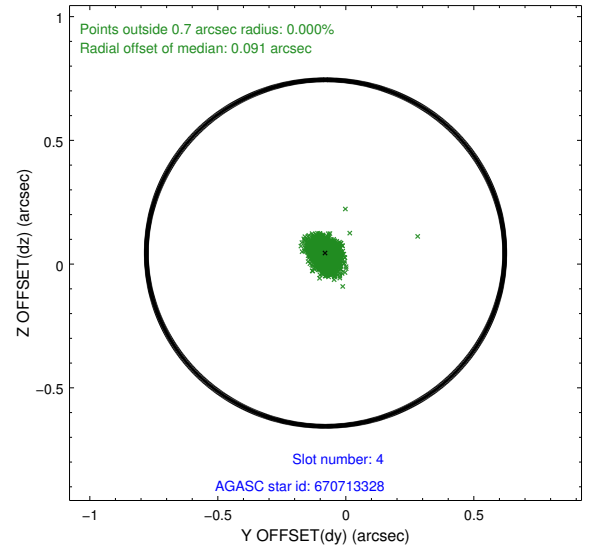
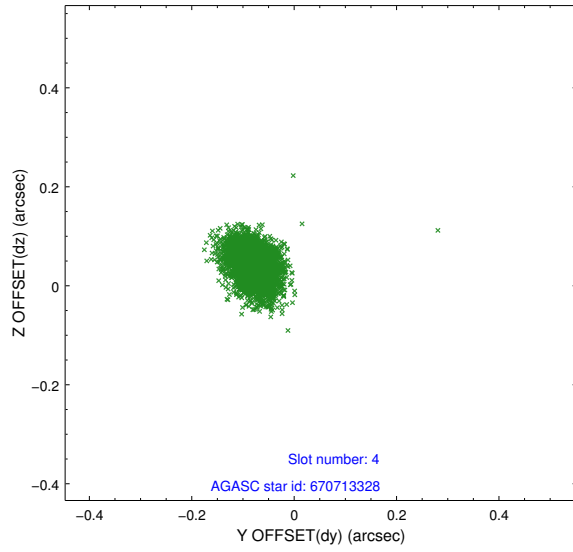
slot	status	id	mag	n_pts	med_dy	med_dz	dr1	dr2	ra	dec	mean_y	mean_z
0	FID	ACIS-S-2	7.10	1722	-0.035	-0.040	0.007	0.011	0.000000	0.000000	-758.50	-1729.64
1	FID	ACIS-S-4	7.20	1722	0.065	0.028	0.006	0.011	0.000000	0.000000	2154.54	178.03
2	FID	ACIS-S-5	7.23	1722	-0.062	0.022	0.006	0.011	0.000000	0.000000	-1810.29	172.68
3	GUIDE	670713072	9.00	3444	0.103	0.138	0.068	0.110	281.205407	-3.604132	2145.43	1149.87
4	GUIDE	670713328	7.57	3443	-0.079	0.045	0.043	0.072	280.824681	-3.187771	1514.74	-778.90
5	GUIDE	670713528	6.48	3444	-0.016	-0.059	0.062	0.101	280.393663	-3.118473	2060.80	-2250.50
6	GUIDE	670714008	9.02	3443	0.054	-0.115	0.070	0.113	281.129237	-3.153193	867.57	111.60
7	GUIDE	670830264	8.75	3442	-0.069	-0.009	0.071	0.110	281.361536	-3.231556	701.76	978.11

## 2.4 Star Slots

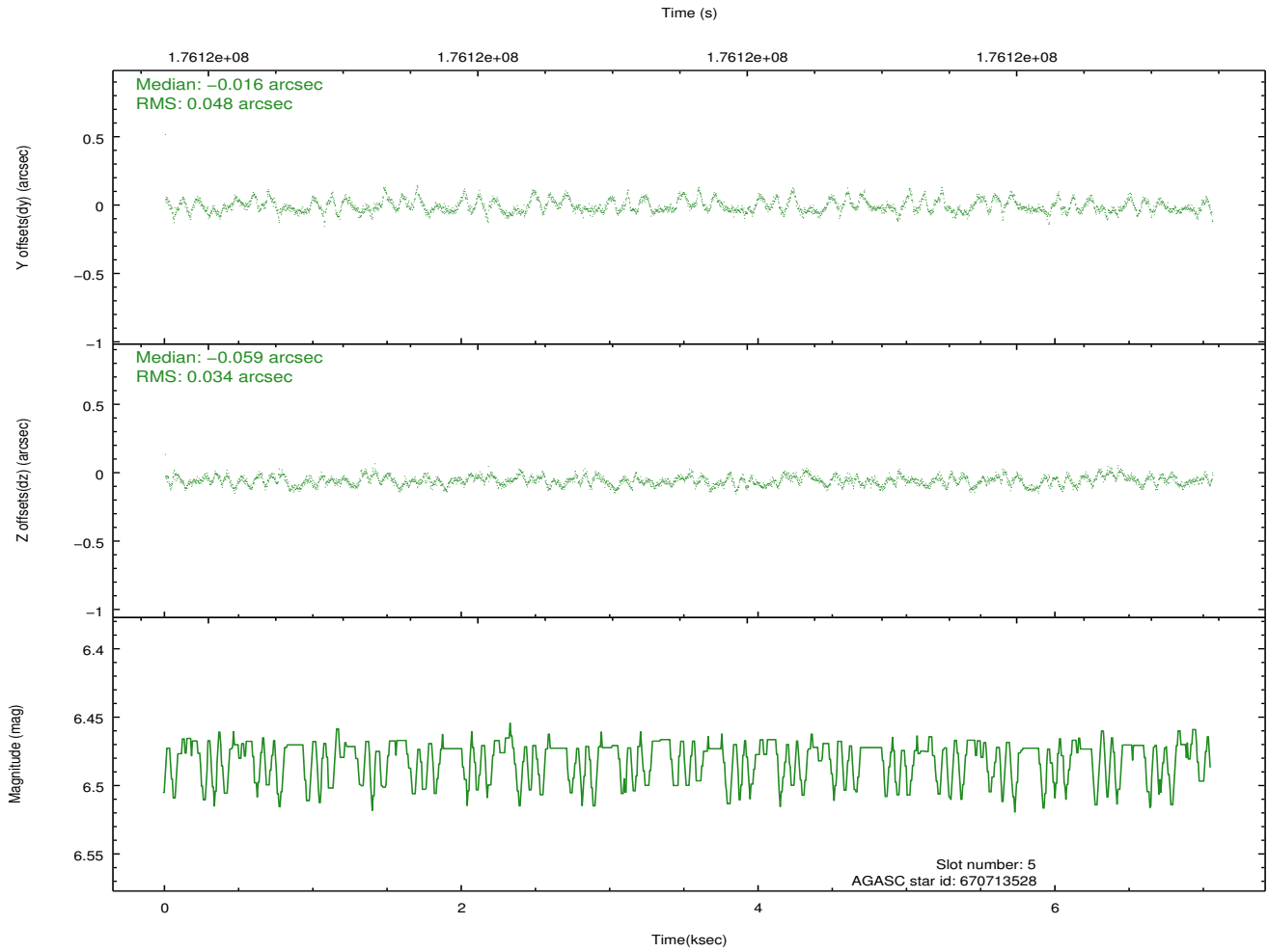
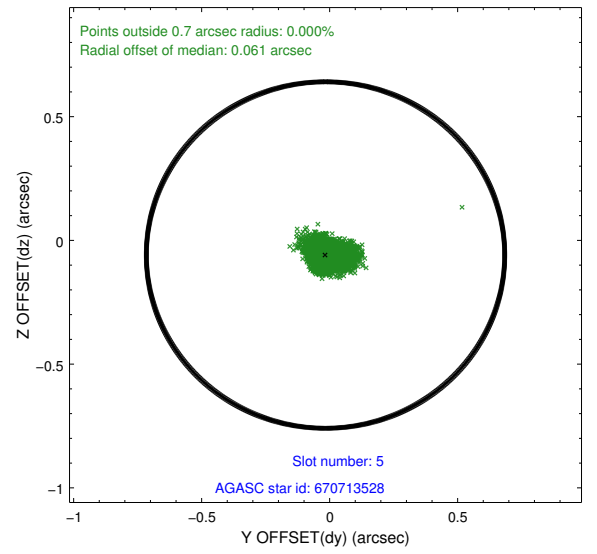
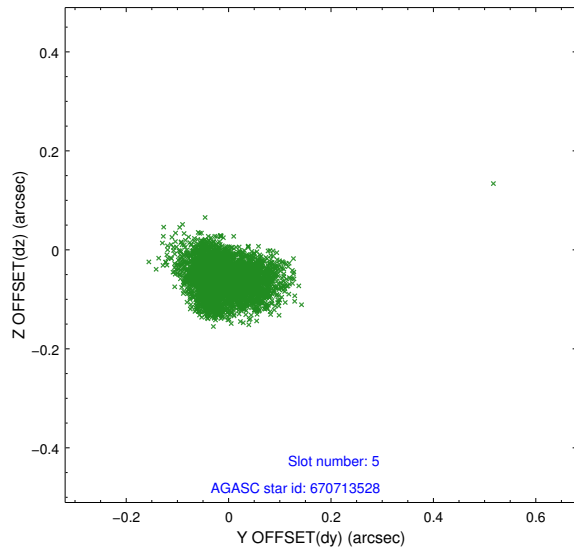
### 2.4.1 Slot 3



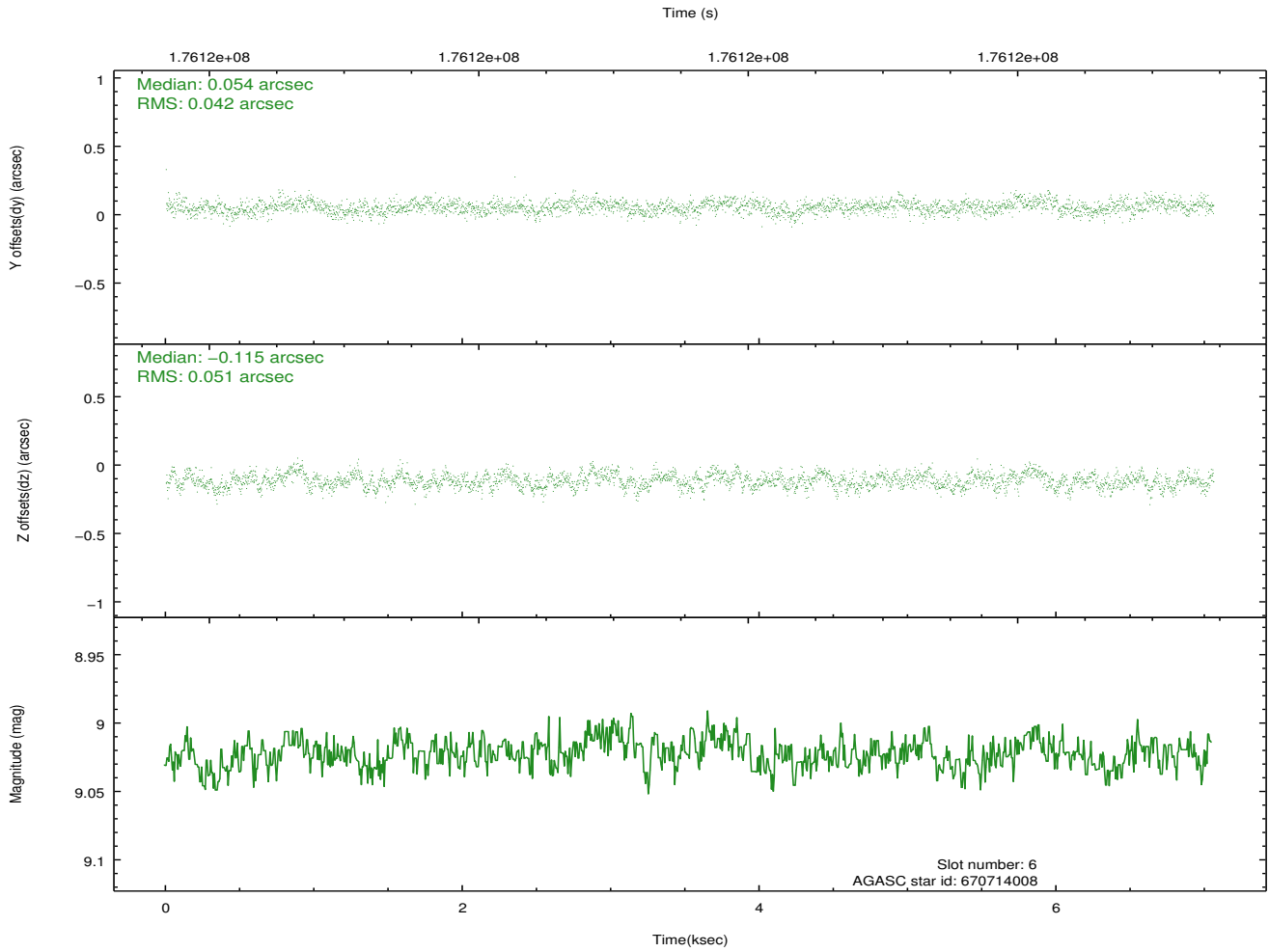
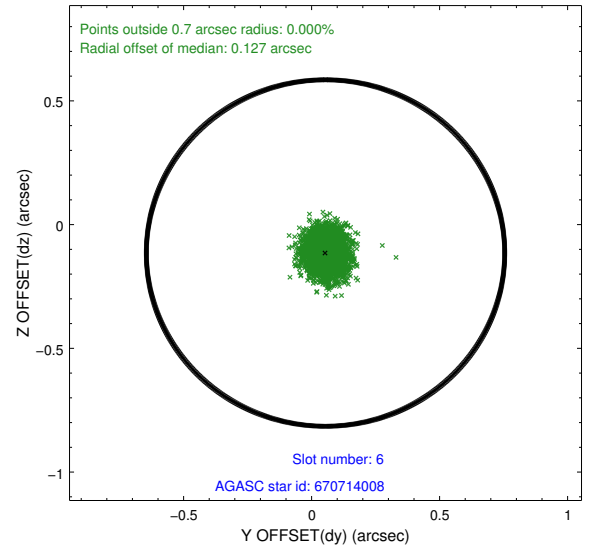
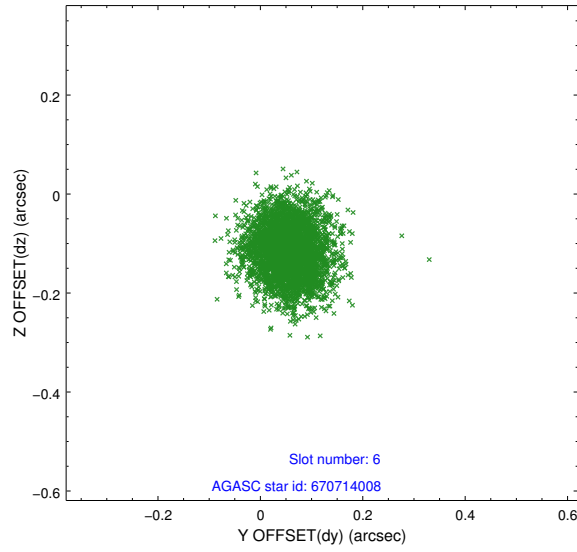
## 2.4.2 Slot 4



### 2.4.3 Slot 5

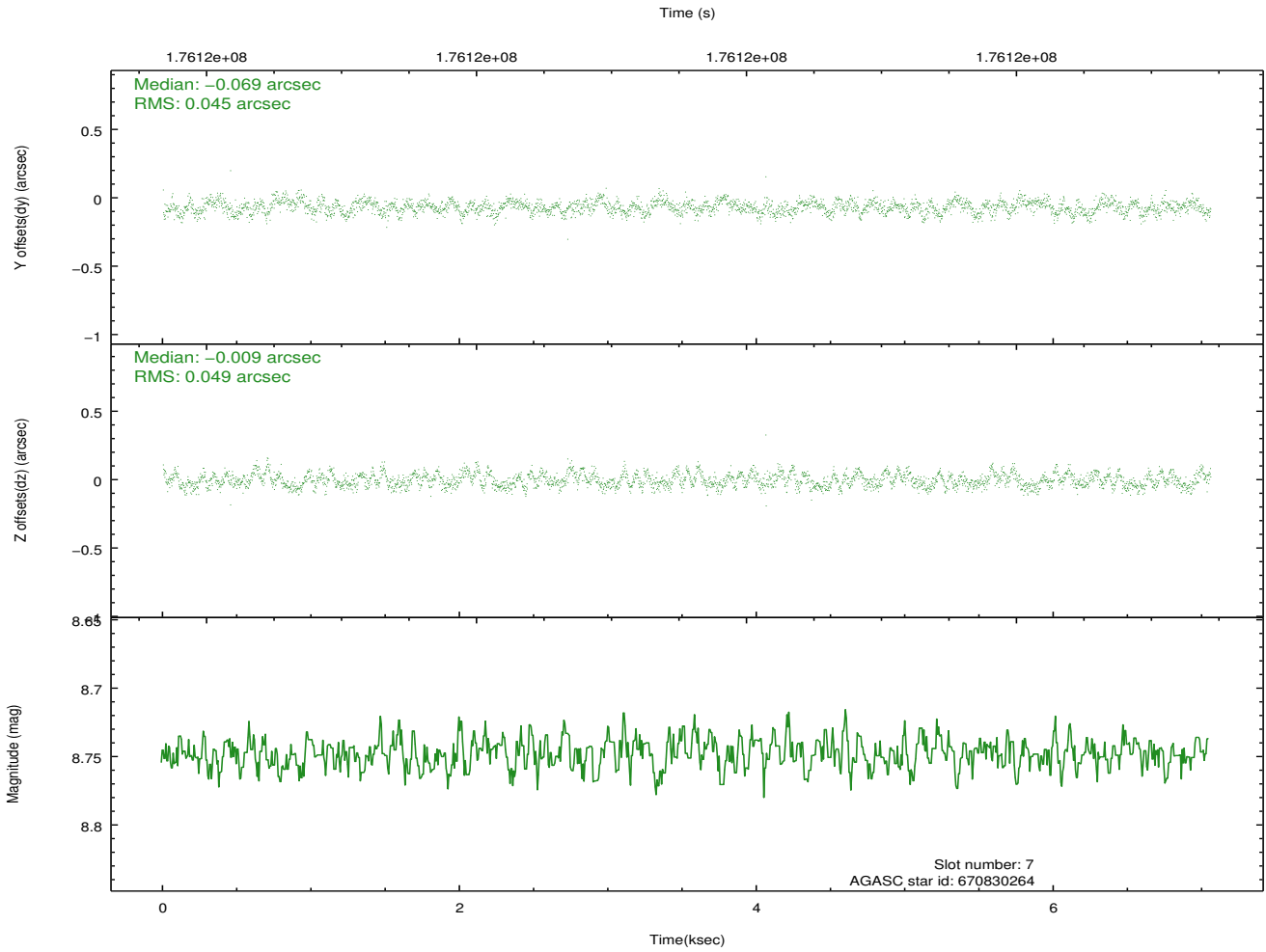
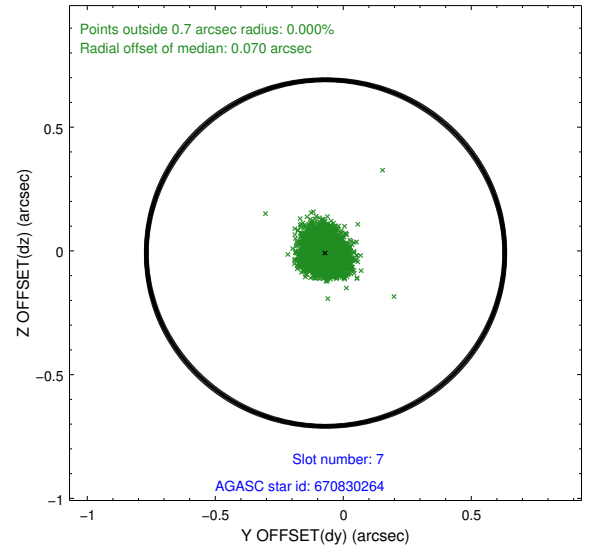
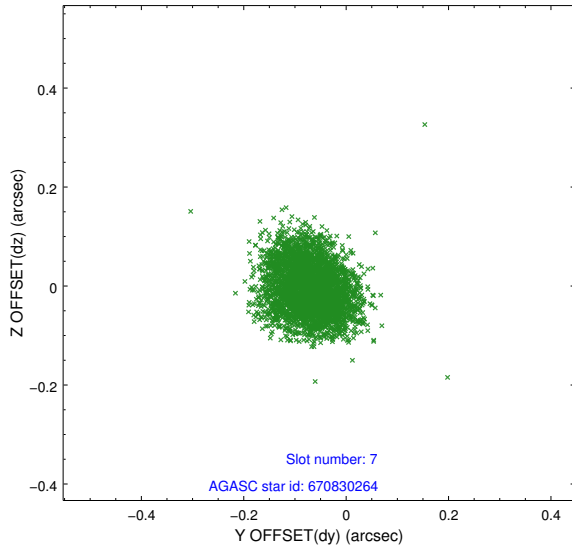


## 2.4.4 Slot 6



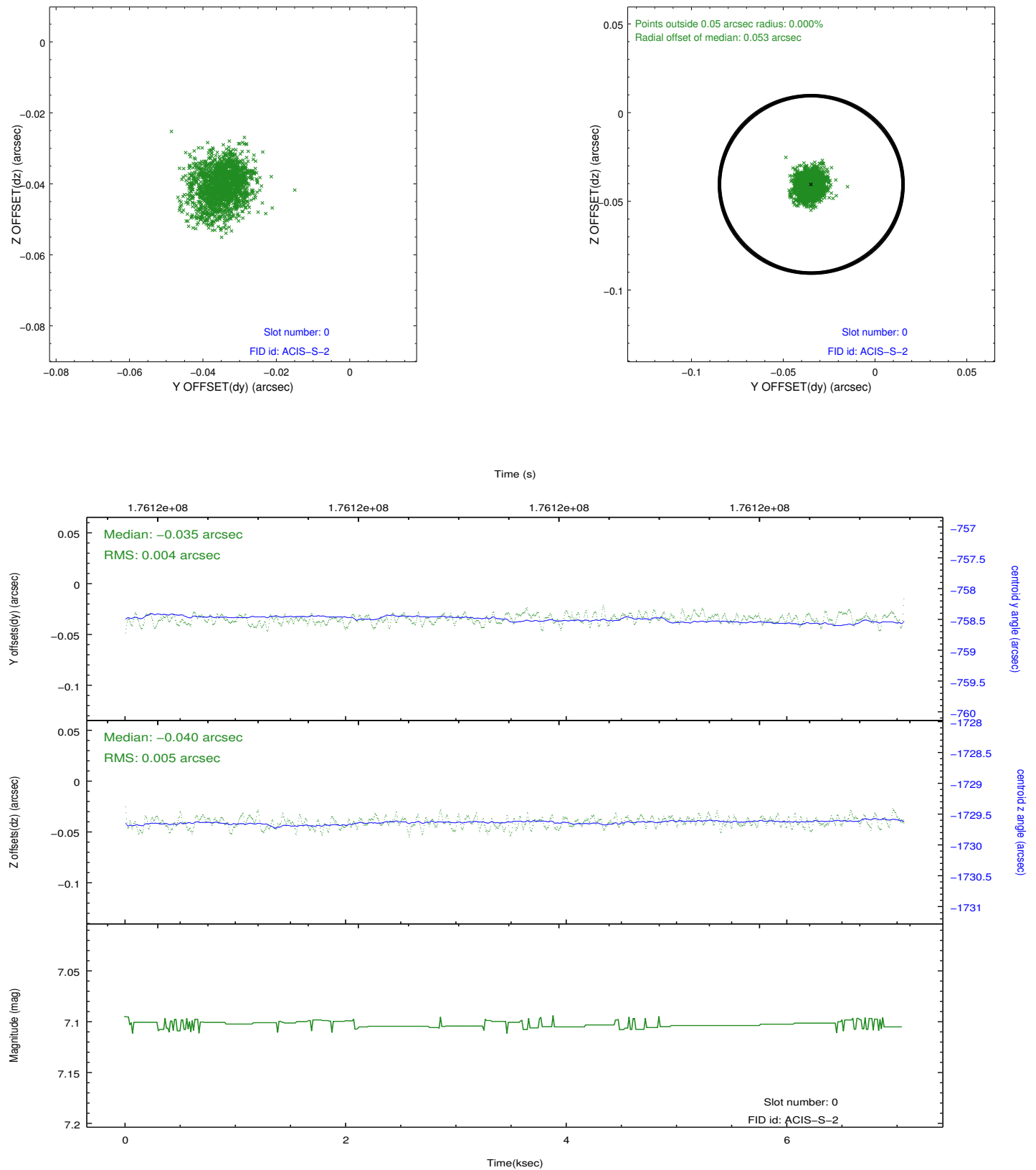


## 2.4.5 Slot 7

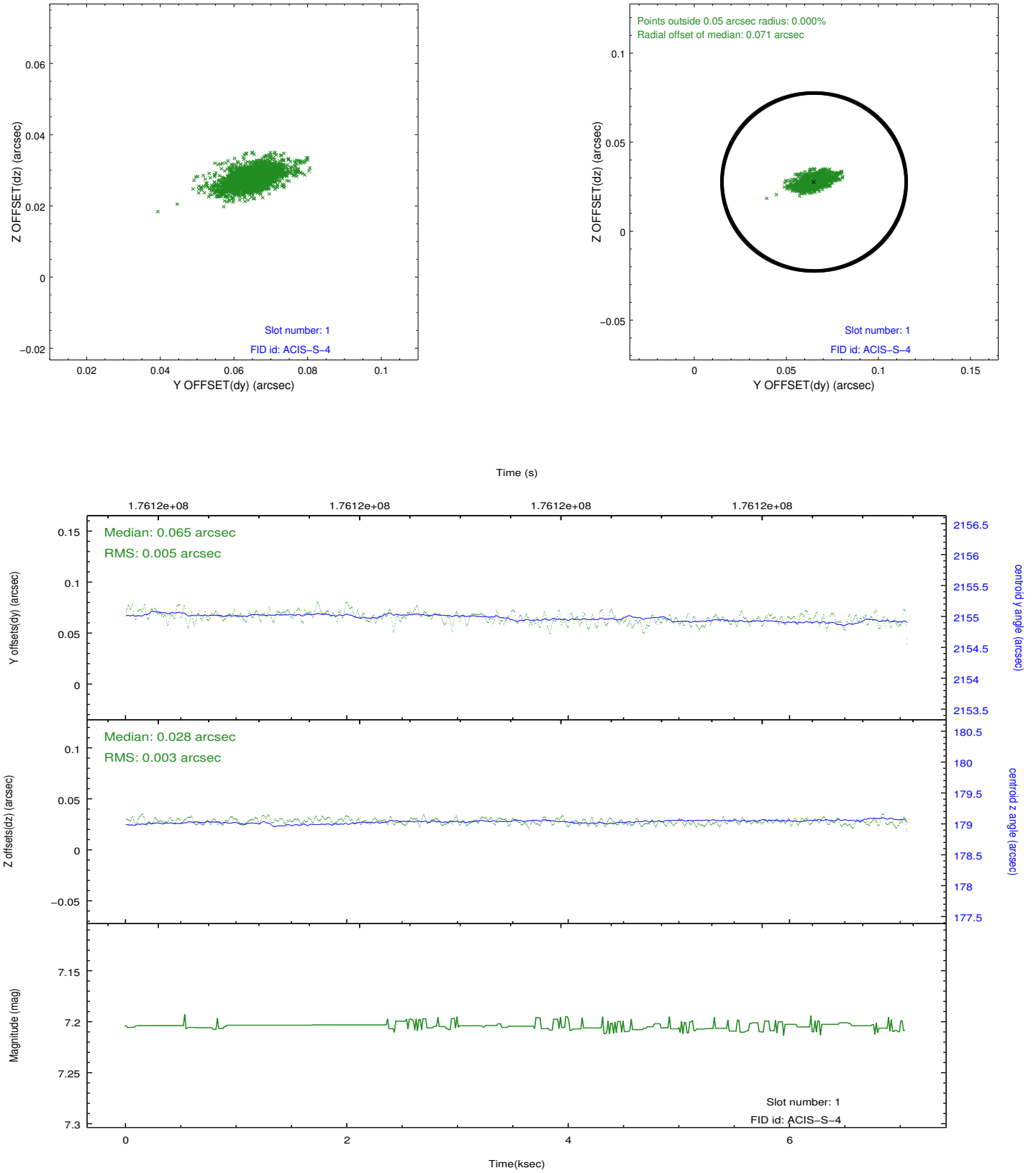


## 2.5 FID Slots

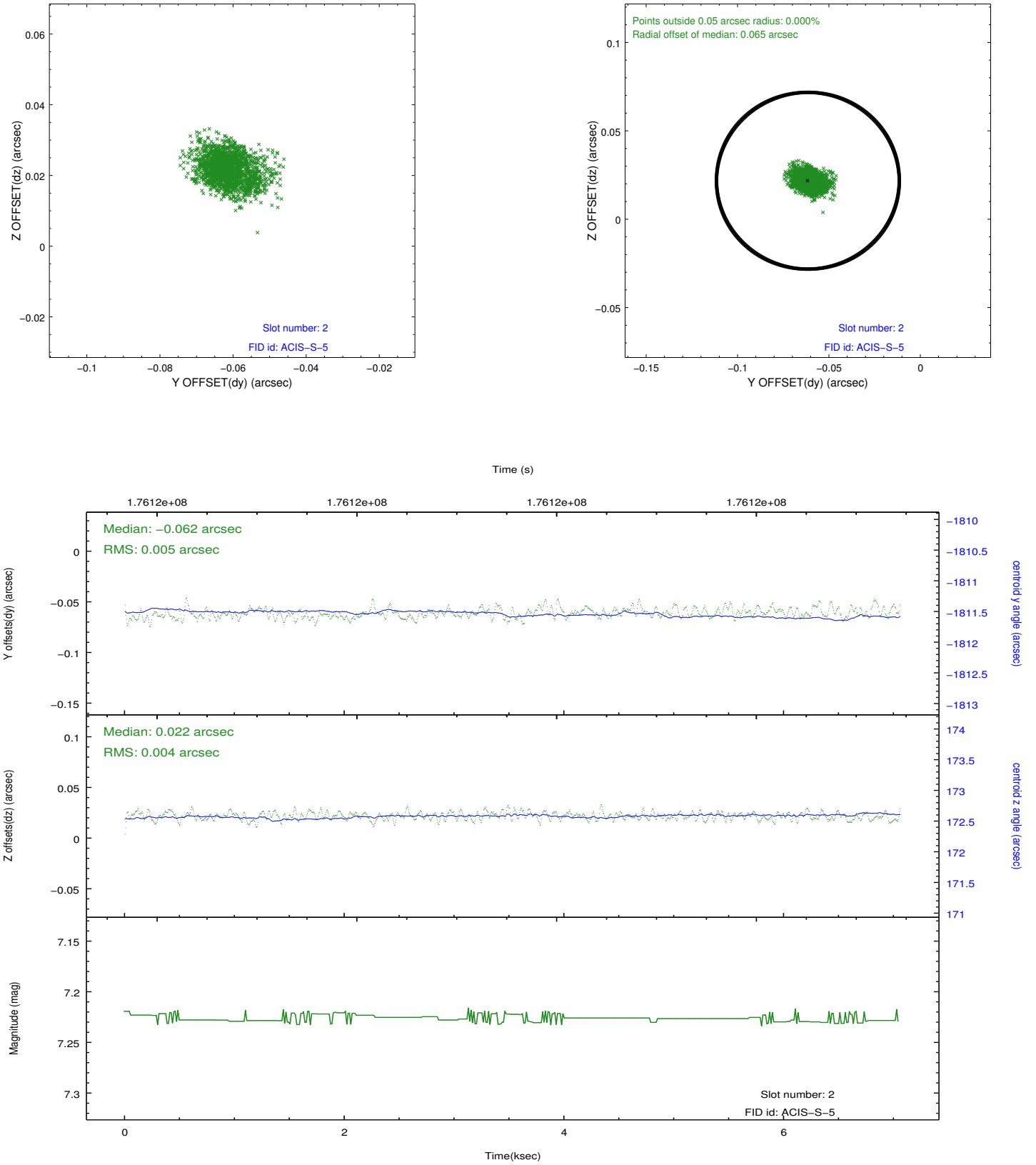
### 2.5.1 Slot 0



## 2.5.2 Slot 1



### 2.5.3 Slot 2



# A Summary

## A.1 Status

V&V Scientist	Jen Lauer
V&V Date (YYYY-MM-DD)	2013.02.15
V&V Edition	1
V&V Disposition and Status	OK
V&V Charge Time	7.75

## A.2 Comments

Charge time for this ObsId remains at original value of 7.75 ksec, although with the current processing the charge time would have been 7.02 ksec.

=====

This observation was interrupted by safing of the science instruments onboard Chandra due to high solar radiation environment. The observation was interrupted at 2003:213:11:39:34. Due to a high radiation environment, the instruments were safed and the observation terminated early. This observation has been reprocessed so that the aspect solution correctly handles the instrument safing and maneuver activities at the end of the observation.