

# V&V Reference Report

## L2 ASCDS Version : 8.4.5

Observation 3836 - L2 Version 3  
Chandra X-Ray Center

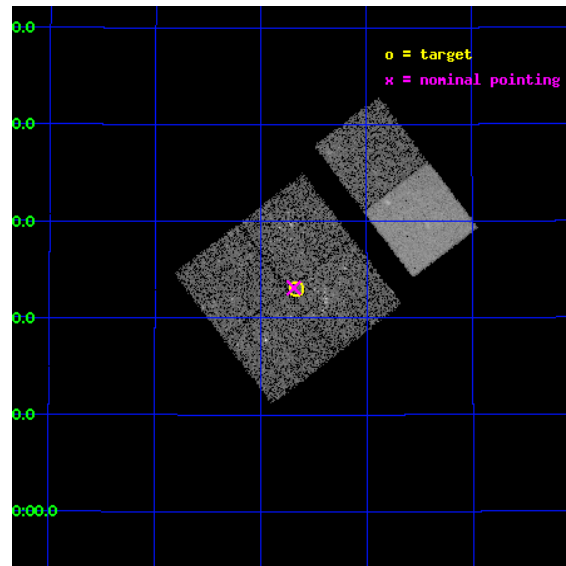
L2 Processing Date : Oct 24 2012

## Contents

<b>1</b>	<b>Front</b>	<b>2</b>
<b>2</b>	<b>OBI</b>	<b>3</b>
2.1	OBI . . . . .	3
2.1.1	Images . . . . .	3
2.1.2	Bias . . . . .	3
2.1.3	Parameters . . . . .	4
2.1.4	Events . . . . .	4
2.2	Compared Parameters . . . . .	5
2.3	Aspect . . . . .	6
2.4	Star Slots . . . . .	9
2.4.1	Slot 3 . . . . .	9
2.4.2	Slot 4 . . . . .	10
2.4.3	Slot 5 . . . . .	11
2.4.4	Slot 6 . . . . .	12
2.4.5	Slot 7 . . . . .	13
2.5	FID Slots . . . . .	14
2.5.1	Slot 0 . . . . .	14
2.5.2	Slot 1 . . . . .	15
2.5.3	Slot 2 . . . . .	16
<b>A</b>	<b>Summary</b>	<b>17</b>
A.1	Status . . . . .	17
A.2	Comments . . . . .	17

# 1 Front

seq_num	500315	Sequence number
obs_id	3836	Observation id
title	REVEALING THE PULSAR COUNTERPARTS OF EGRET SOURCES	Proposal title
observer	Prof. Jules Halpern	Principal investigator
object	GEV J2035+4214	Source name
dtcycle	0	&#160
cycle	P	events from which exps? Prim/Second/Both
ra_targ	308.916667	Observer's specified target RA [deg]
dec_targ	42.383333	Observer's specified target Dec [deg]
ra_nom	308.92210921639	Nominal RA [deg]
dec_nom	42.385607735129	Nominal Dec [deg]
roll_nom	52.647559949453	Nominal Roll [deg]
revision	3	Processing version of data
ontime	19739.000186086	Sum of GTIs [s]
livetime	19489.053080331	Livetime [s]
ontime0	19748.600036651	Sum of GTIs [s]
ontime1	19748.64101696	Sum of GTIs [s]
ontime2	19729.236295253	Sum of GTIs [s]
ontime3	19739.000186086	Sum of GTIs [s]
ontime6	19755.28708747	Sum of GTIs [s]
ontime7	19739.041256219	Sum of GTIs [s]
l2events	65323	Number of level 2 events

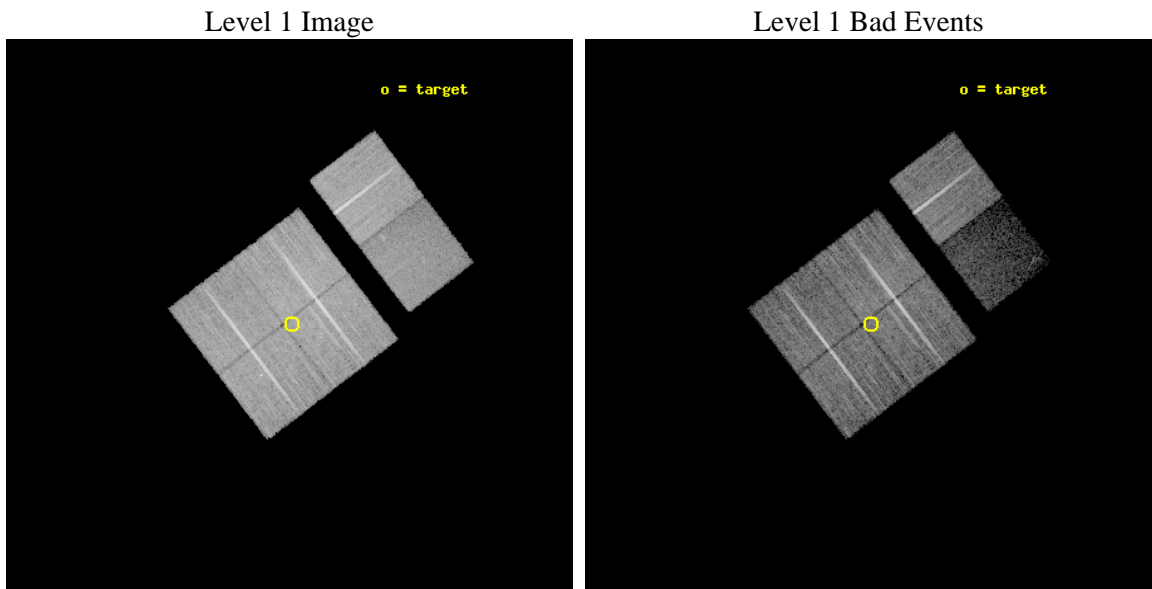




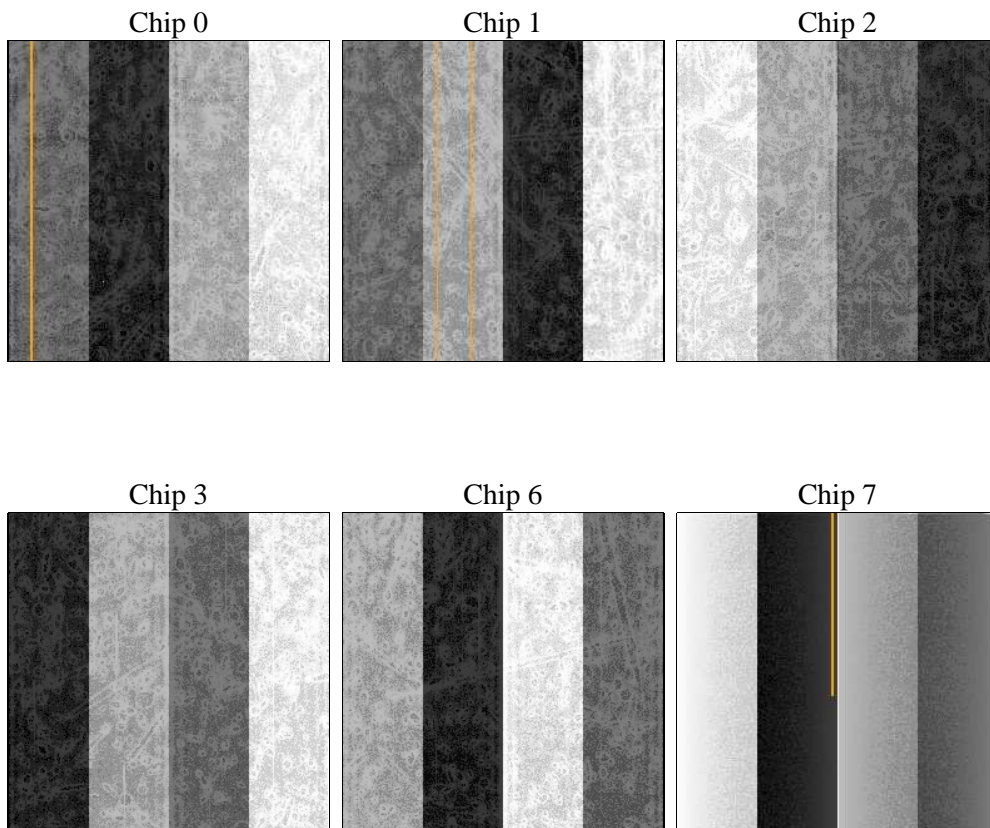
## 2 OBI

### 2.1 OBI

#### 2.1.1 Images



#### 2.1.2 Bias



### 2.1.3 Parameters

obi_num	0	Obi number	sched_exp_time	19800.000000	[s] Scheduled observation exposure time
ascdsver	8.4.5	Processing system revision	ontime	19739.000186086	Sum of GTIs [s]
caldsver	4.5.2	&#160	ontime0	19748.600036651	Sum of GTIs [s]
date	2012-10-24T13:36:54	Date and time of file creation	ontime1	19748.64101696	Sum of GTIs [s]
revision	3	Processing version of data	ontime2	19729.236295253	Sum of GTIs [s]
			ontime3	19739.000186086	Sum of GTIs [s]
			ontime6	19755.28708747	Sum of GTIs [s]
			ontime7	19739.041256219	Sum of GTIs [s]
			l1events	504763	Number of level 1 events

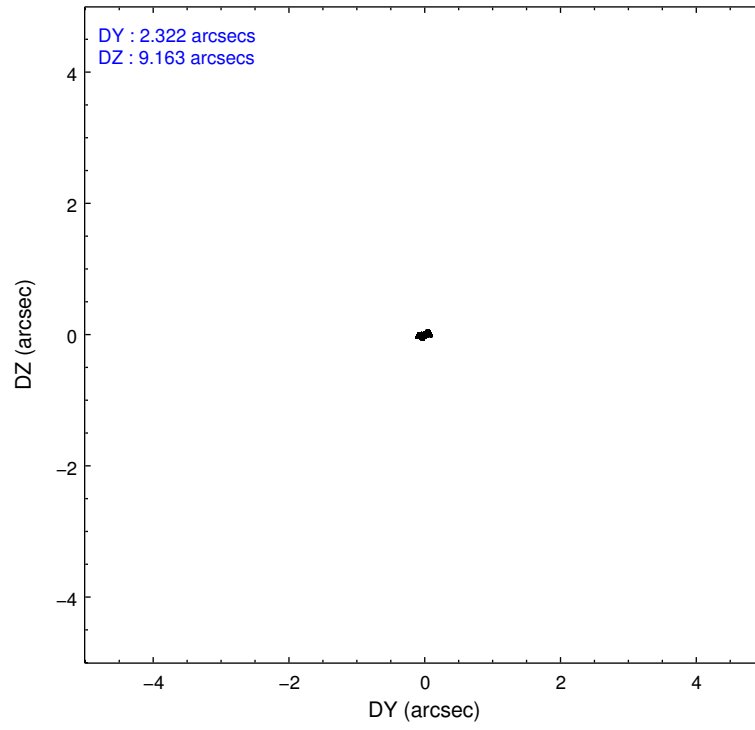
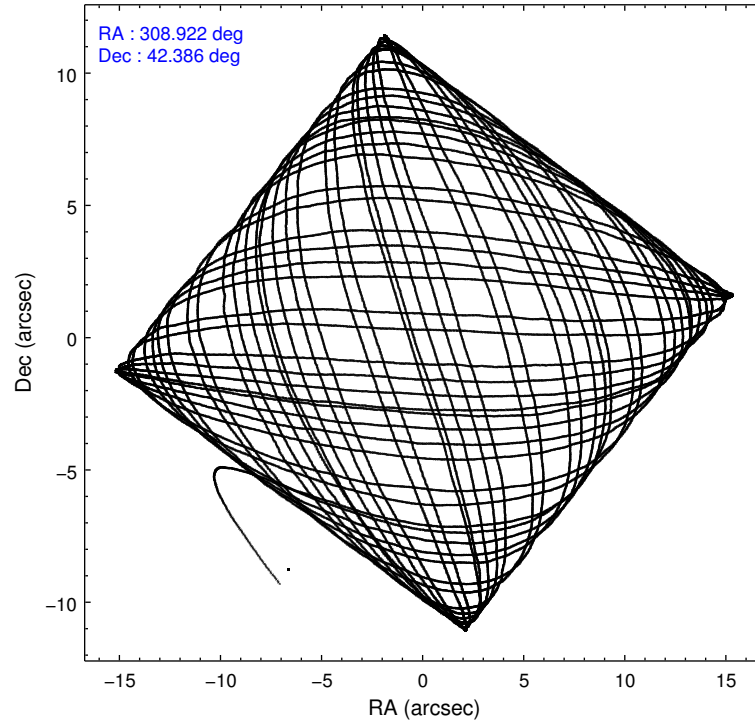
### 2.1.4 Events

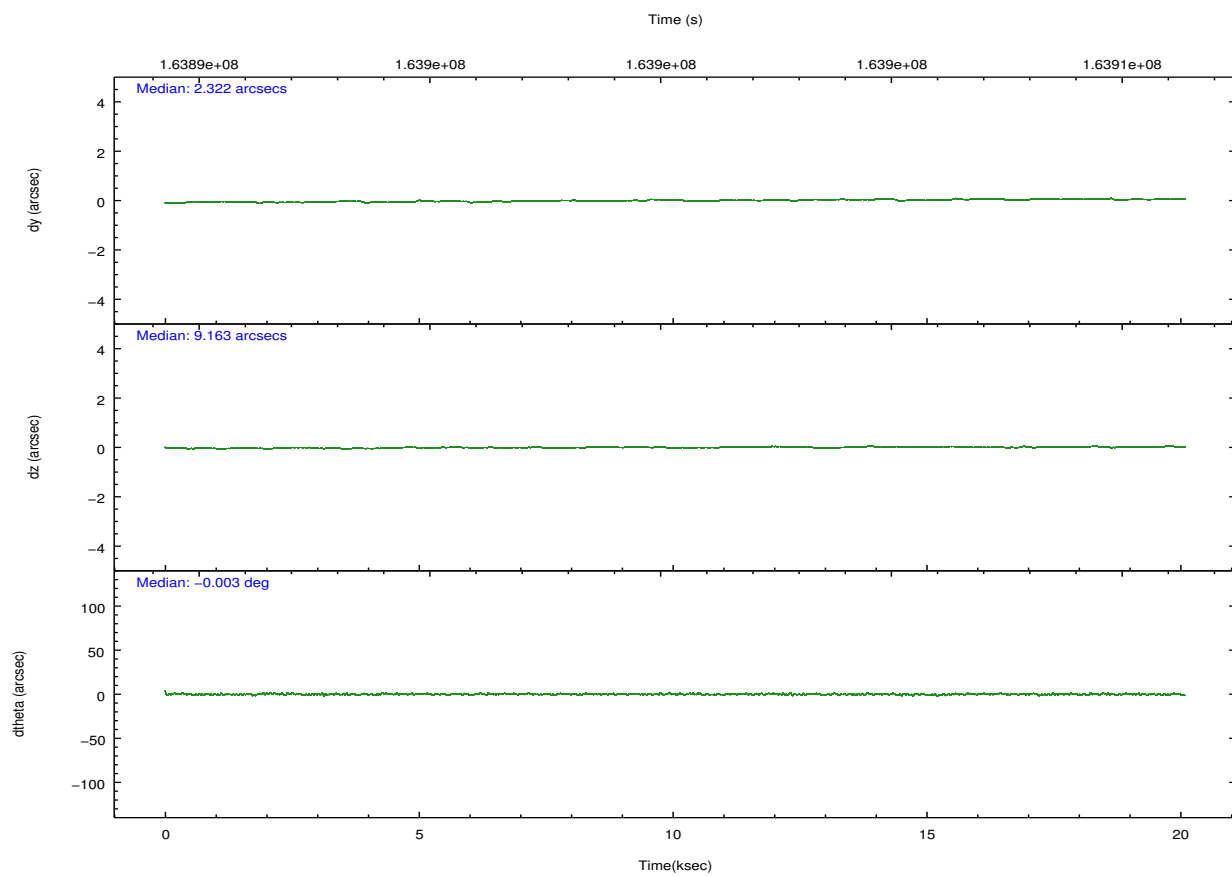
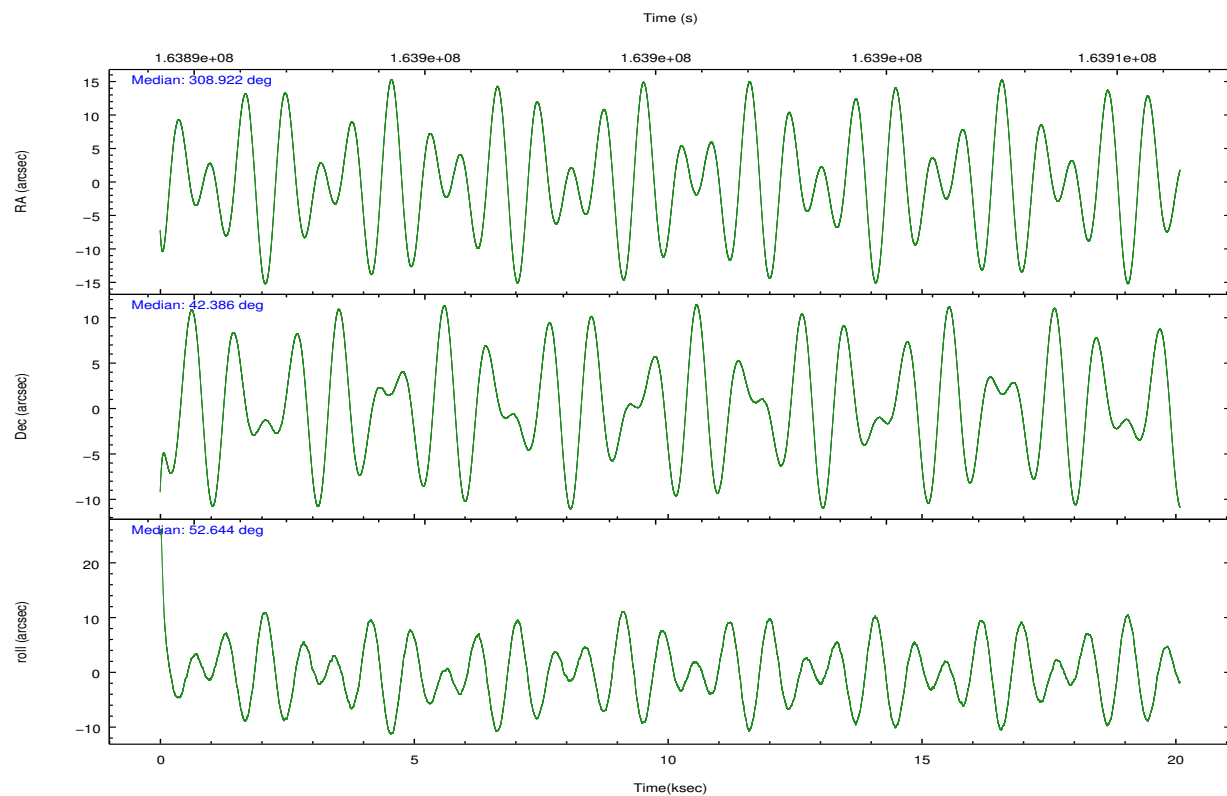
	ccd 0	ccd 1	ccd 2	ccd 3	ccd 6	ccd 7		ccd 0	ccd 1	ccd 2	ccd 3	ccd 6	ccd 7
level 1 events	83870	83375	100294	89769	94977	52478	grade 0 events	3820	3876	4391	4140	3321	4046
rejected events	74957	74111	90869	81104	86677	21757		4%	4%	4%	4%	3%	7%
rejected %	89%	88%	90%	90%	91%	41%	grade 1 events	50	43	54	48	48	93
								0%	0%	0%	0%	0%	0%
							grade 2 events	1846	1821	2024	1555	1738	7365
								2%	2%	2%	1%	1%	14%
							grade 3 events	1055	1111	915	966	930	3384
								1%	1%	0%	1%	0%	6%
							grade 4 events	956	1042	938	861	959	3301
								1%	1%	0%	0%	1%	6%
							grade 5 events	1606	1655	1444	1722	1931	5467
								1%	1%	1%	1%	2%	10%
							grade 6 events	1241	1416	1167	1148	1354	12630
								1%	1%	1%	1%	1%	24%
							grade 7 events	73296	72411	89361	79329	84696	16192
								87%	86%	89%	88%	89%	30%

## 2.2 Compared Parameters

Parameter	Planned	Actual	Parameter	Planned	Actual
Instrument	ACIS	ACIS	Obspar format version number	7	7
Detector	ACIS-012367	ACIS-012367	Obspar file type	PREDICTED	ACTUAL
Grating	NONE	NONE	Obspar update status	NONE	UPDATED
Data mode	VFAINT	VFAINT	Number of optional ACIS chips dropped	0	0
Observation mode	POINTING	POINTING	On-chip summing requested	N	N
[deg] Pointing RA	308.917532	308.9221092163913	Subarray requested	NONE	NONE
[deg] Pointing Dec	42.358466	42.38560773512891	Alternating exposures requested	N	N
[deg] Pointing Roll	52.441948	52.64755994945257	[s] Primary exposure time	0.000000	3.2
[mm] SIM focus pos	-0.782348	-0.7809083437167272			
[mm] SIM defocus	0	0.001439871863259334			
[mm] SIM translation stage pos	-233.592463	-233.5874344608287			
[mm] SIM translation stage offset	0	-0.005018542100998502			
[s] Observation start time (MET)	163890551.184000	163889527.97418			
Observation start date	2003-03-12T21:08:07	2003-03-12T20:52:07			
[s] Observation end time (MET)	163910351.184000	163910589.16257			
Observation end date	2003-03-13T02:38:07	2003-03-13T02:43:09			
Read mode	TIMED	TIMED			

## 2.3 Aspect



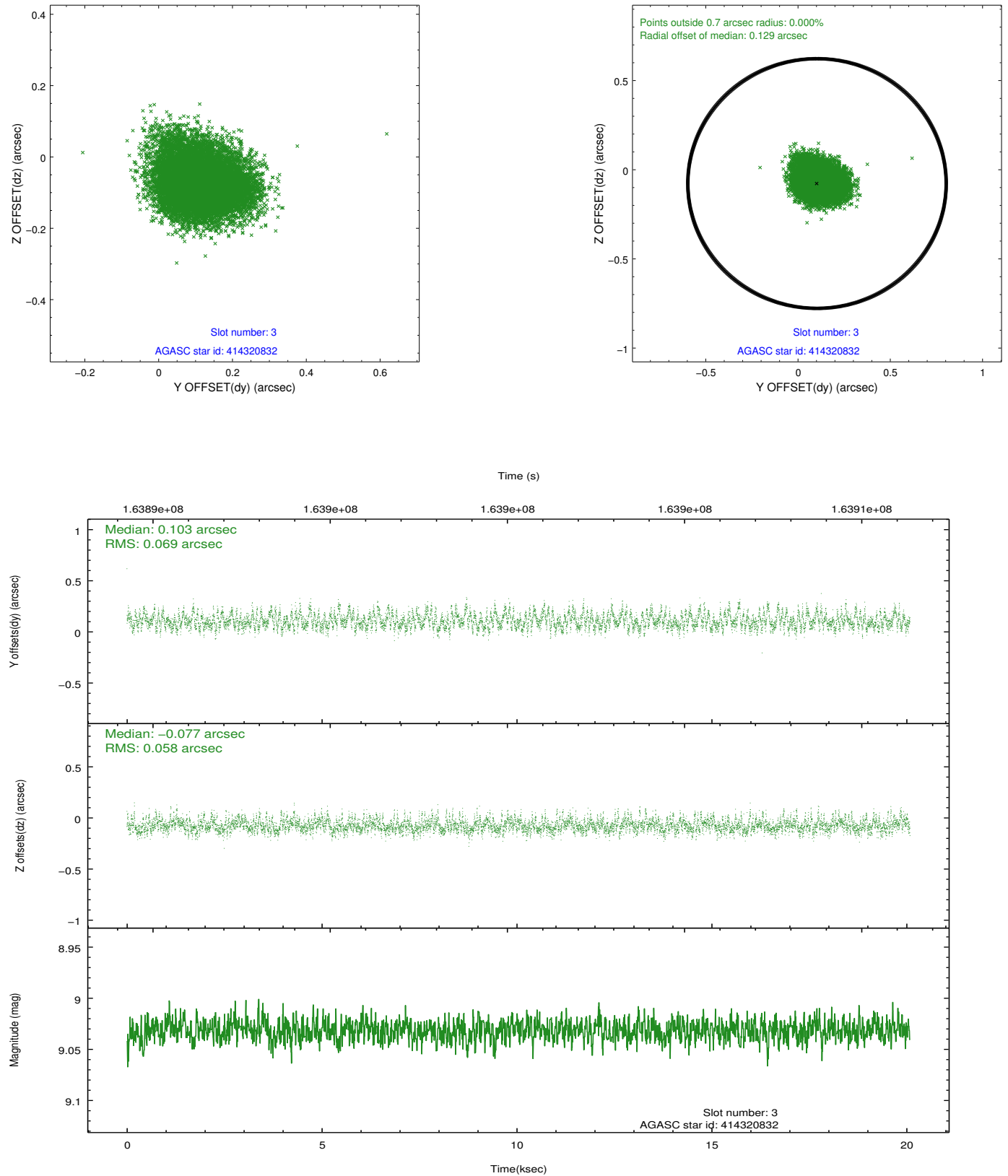


### Slot Statistics

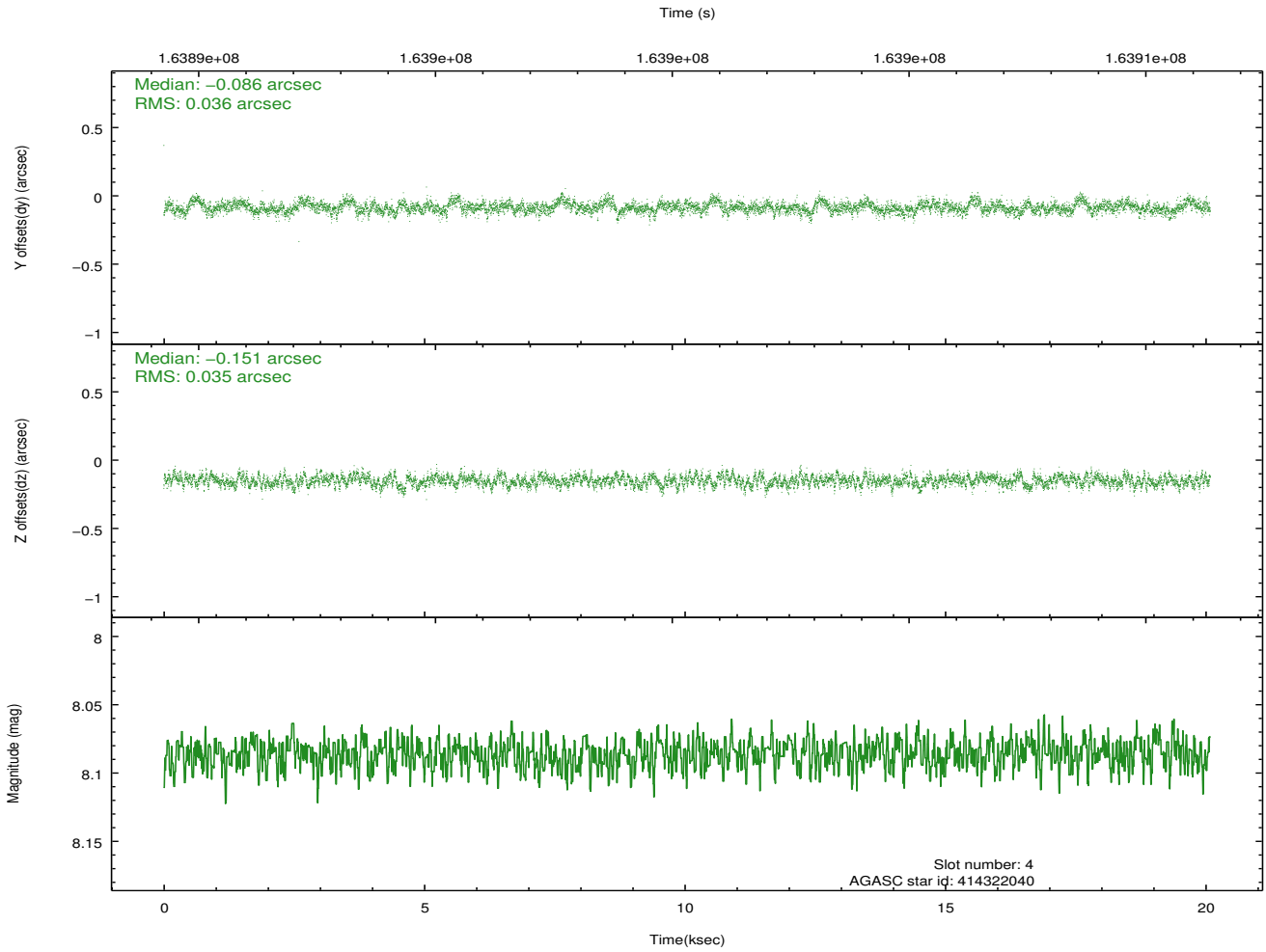
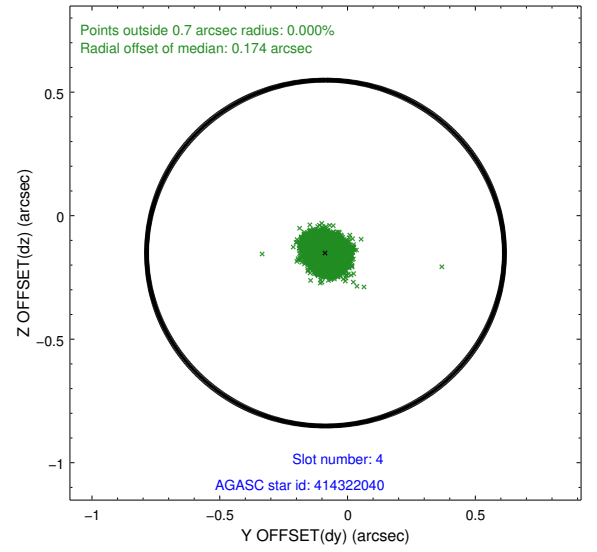
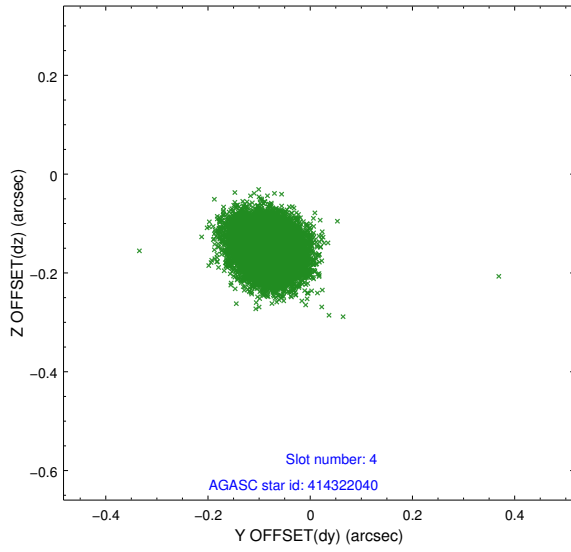
slot	status	id	mag	n_pts	med_dy	med_dz	dr1	dr2	ra	dec	mean_y	mean_z
0	FID	ACIS-I-2	7.15	4889	-0.039	-0.040	0.010	0.017	0.000000	0.000000	-756.71	-839.02
1	FID	ACIS-I-4	7.19	4885	0.044	0.041	0.006	0.011	0.000000	0.000000	2157.32	1067.17
2	FID	ACIS-I-5	7.23	4894	-0.106	0.068	0.010	0.016	0.000000	0.000000	-1810.39	1065.21
3	GUIDE	414320832	9.03	9786	0.103	-0.077	0.096	0.154	307.889863	42.203912	-2098.37	1843.57
4	GUIDE	414322040	8.09	9790	-0.086	-0.151	0.053	0.085	309.251919	42.770338	1715.28	204.78
5	GUIDE	414324952	9.04	9783	0.114	-0.004	0.103	0.160	307.998954	42.060645	-2335.68	1301.02
6	GUIDE	414319880	7.22	9791	-0.141	0.178	0.056	0.086	309.495433	42.845641	2324.62	-136.12
7	GUIDE	414322712	8.43	9789	0.002	0.053	0.073	0.112	309.545536	42.173880	499.92	-1729.16

## 2.4 Star Slots

### 2.4.1 Slot 3

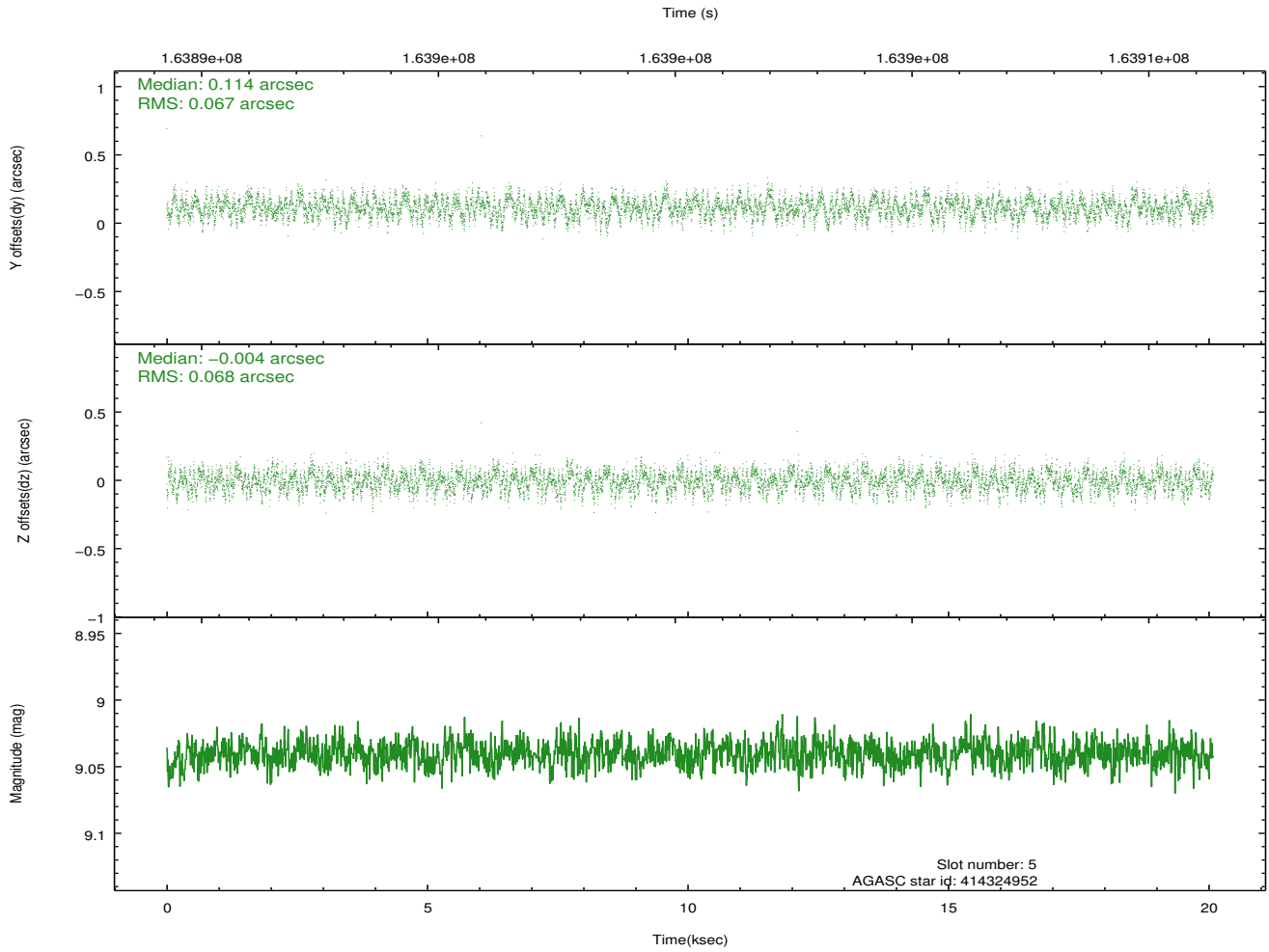
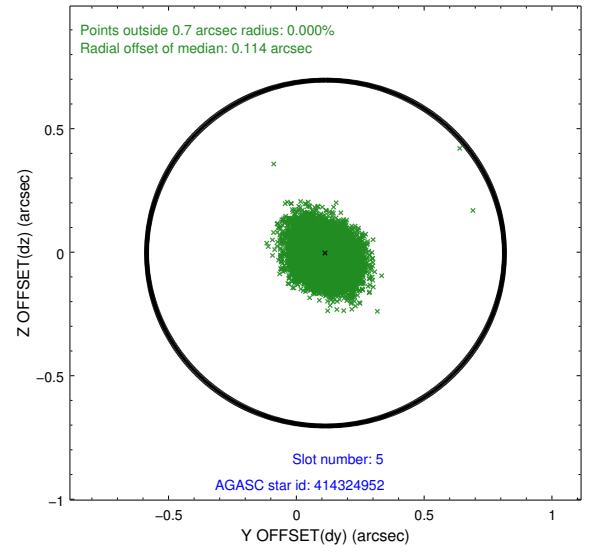
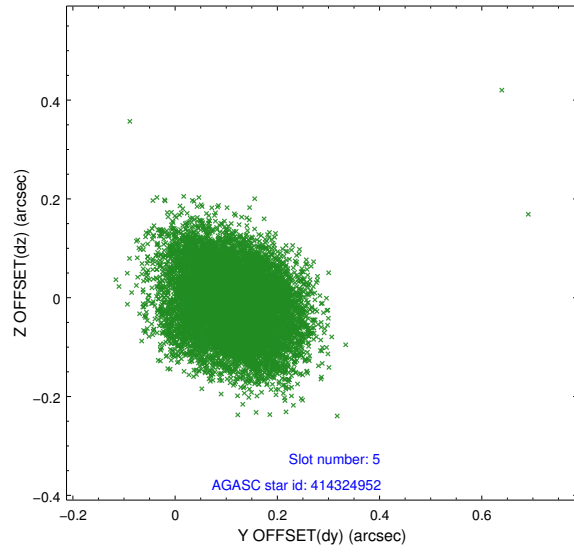


## 2.4.2 Slot 4

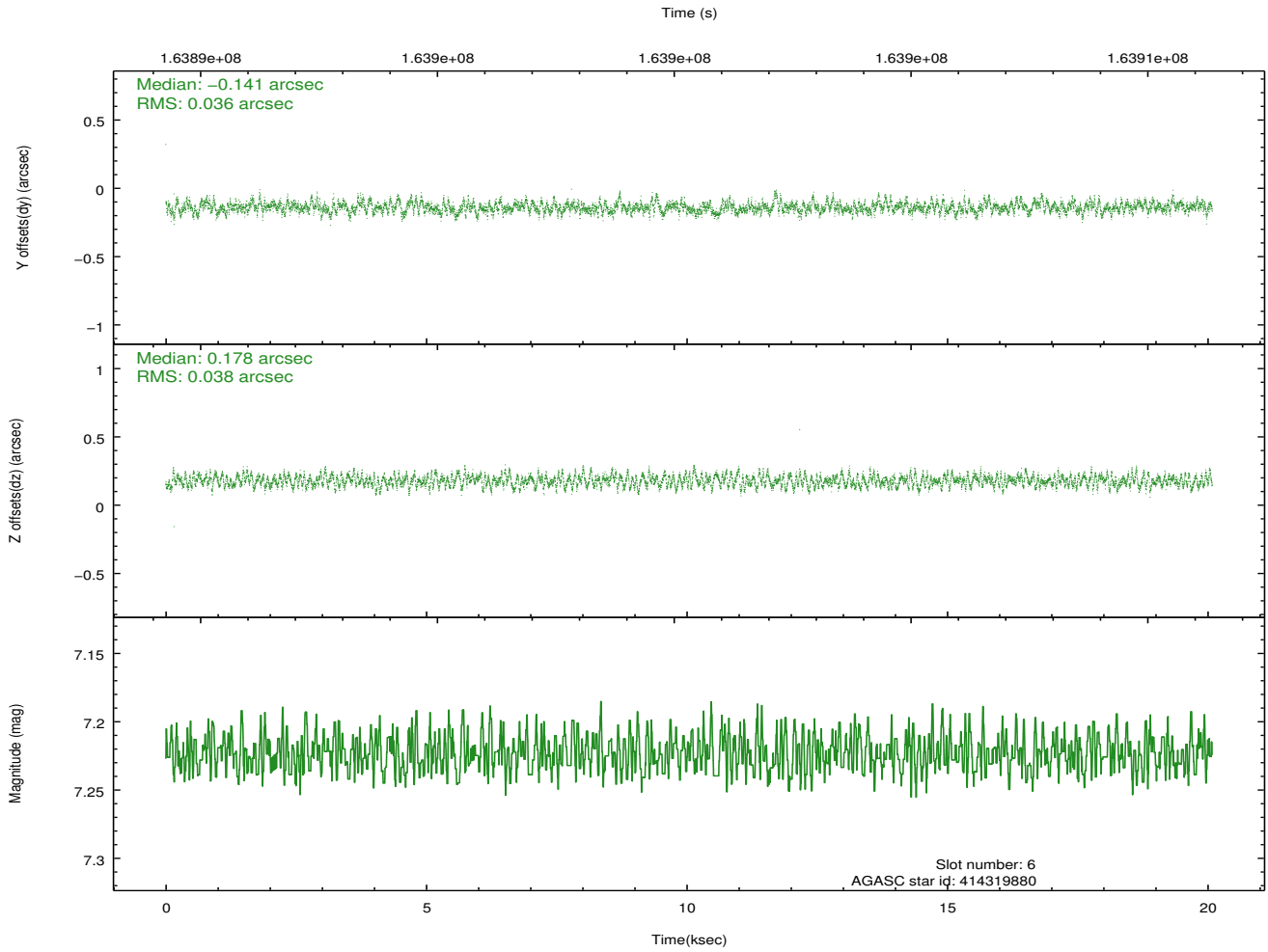
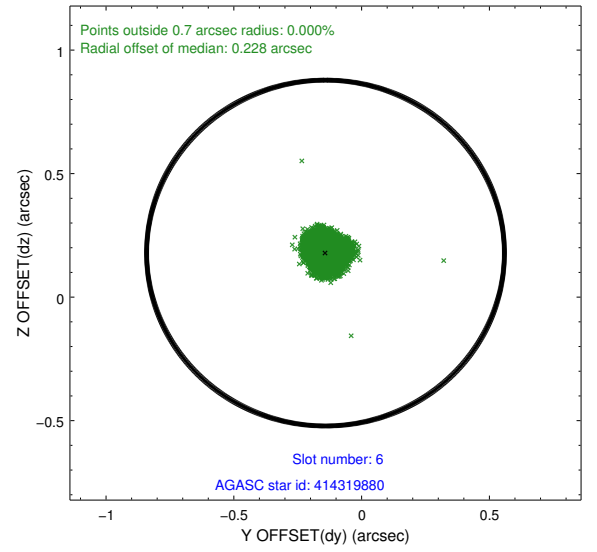
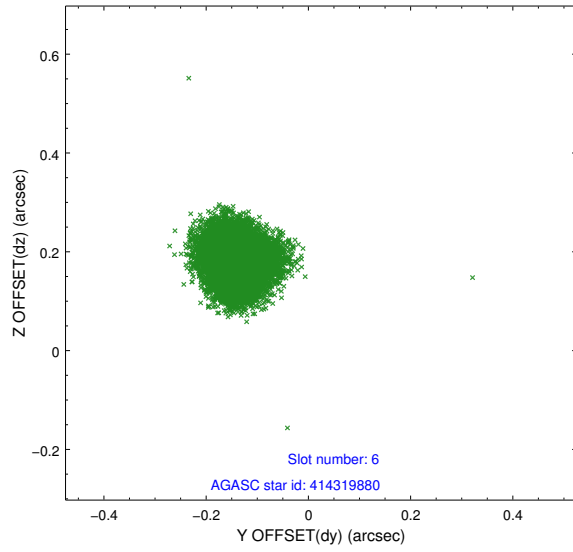




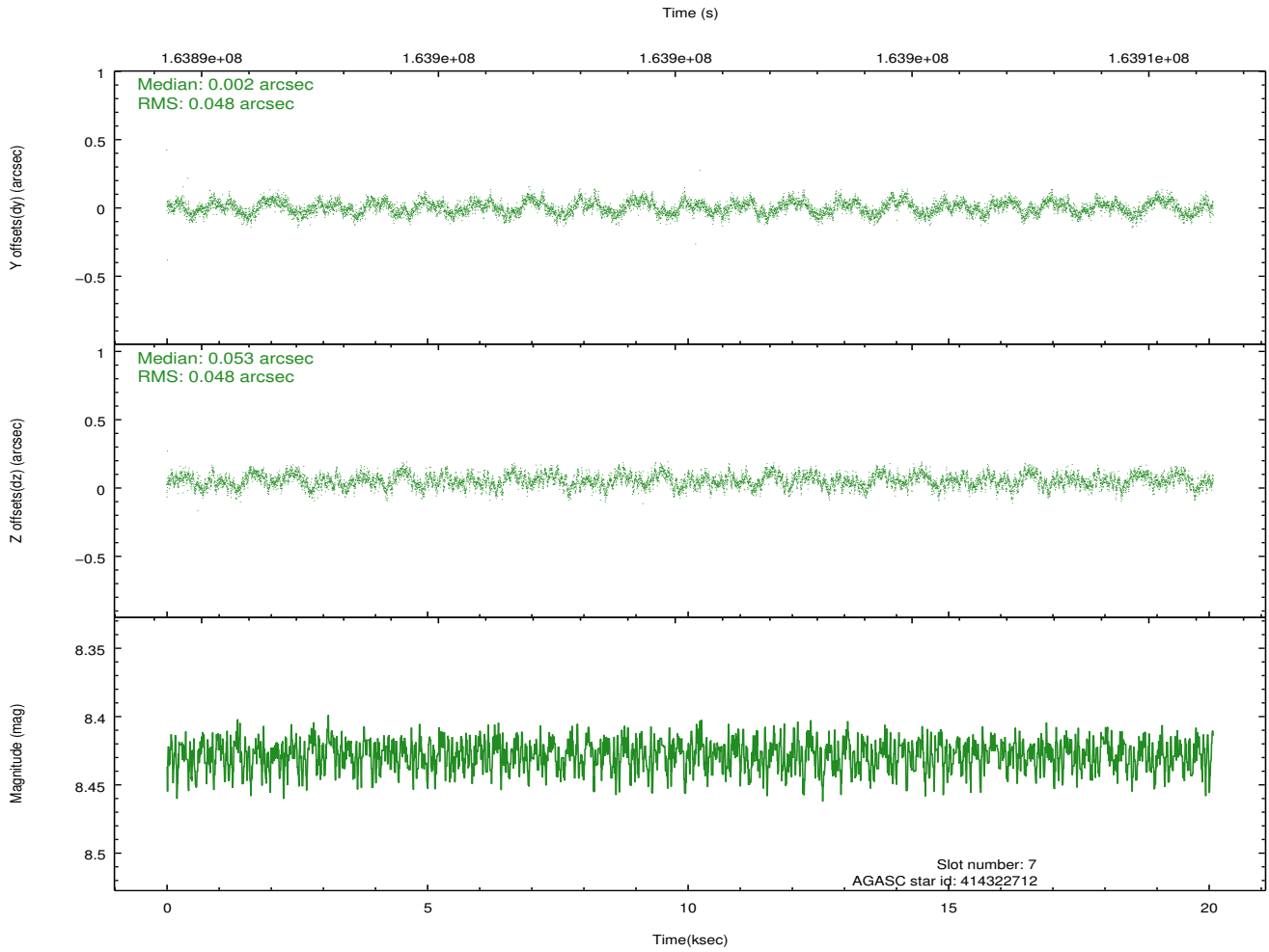
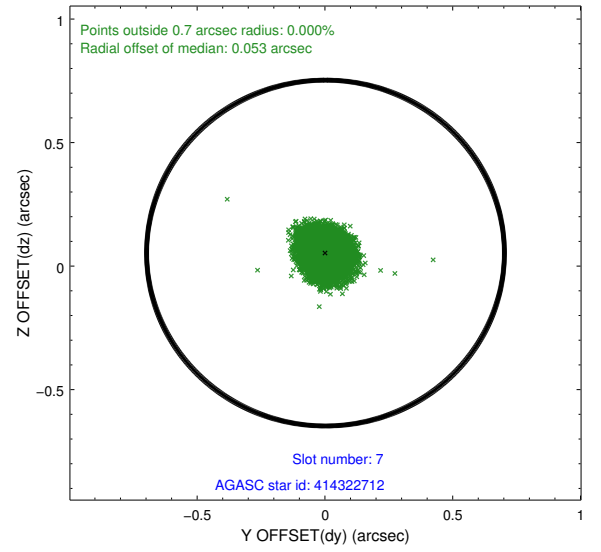
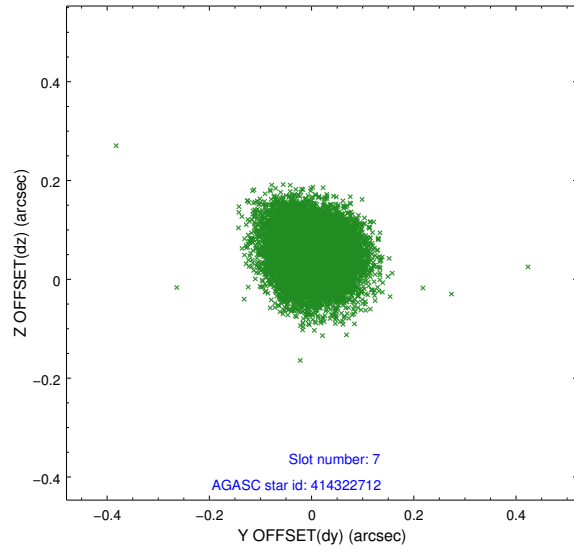
### 2.4.3 Slot 5



## 2.4.4 Slot 6

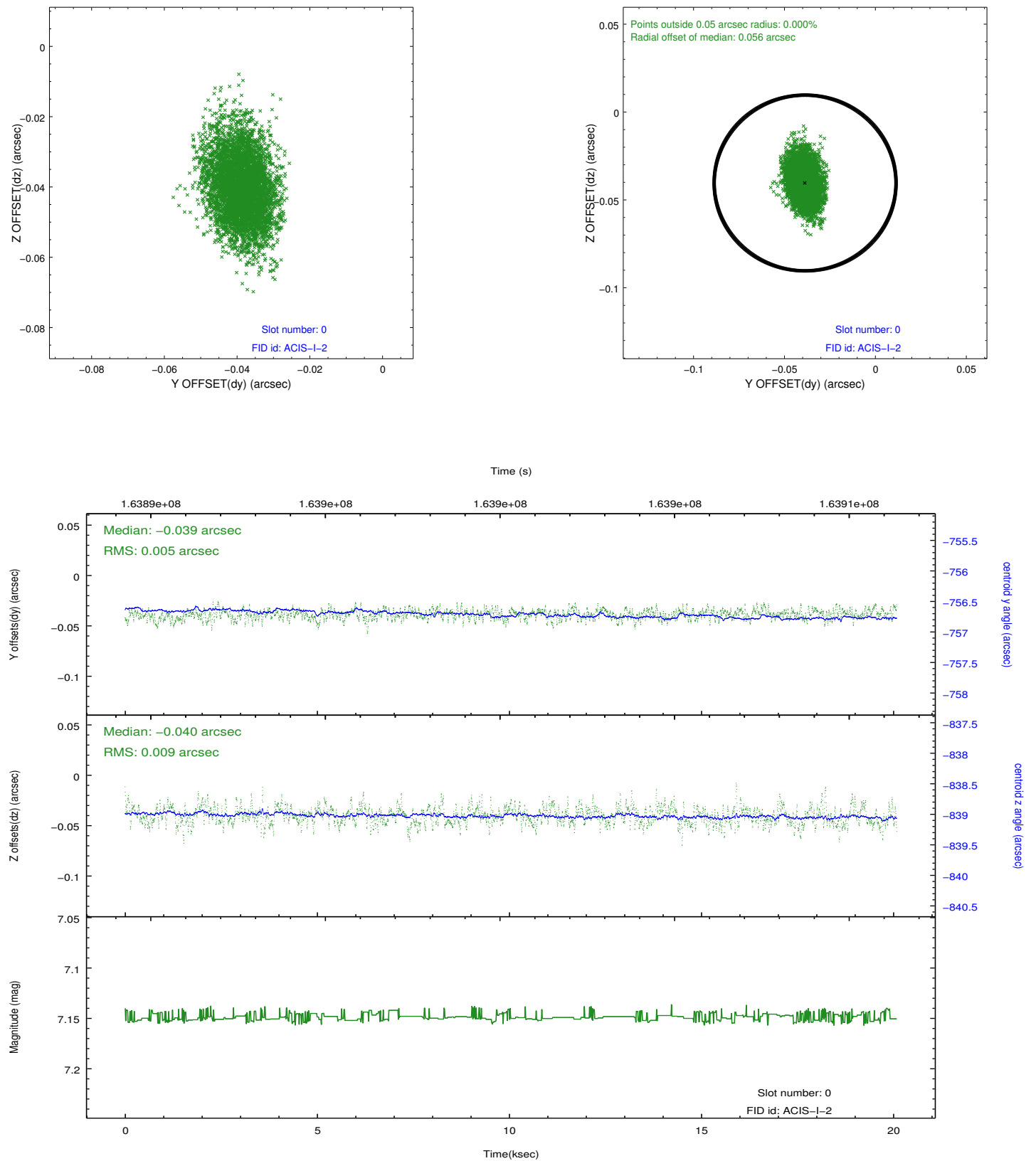


## 2.4.5 Slot 7

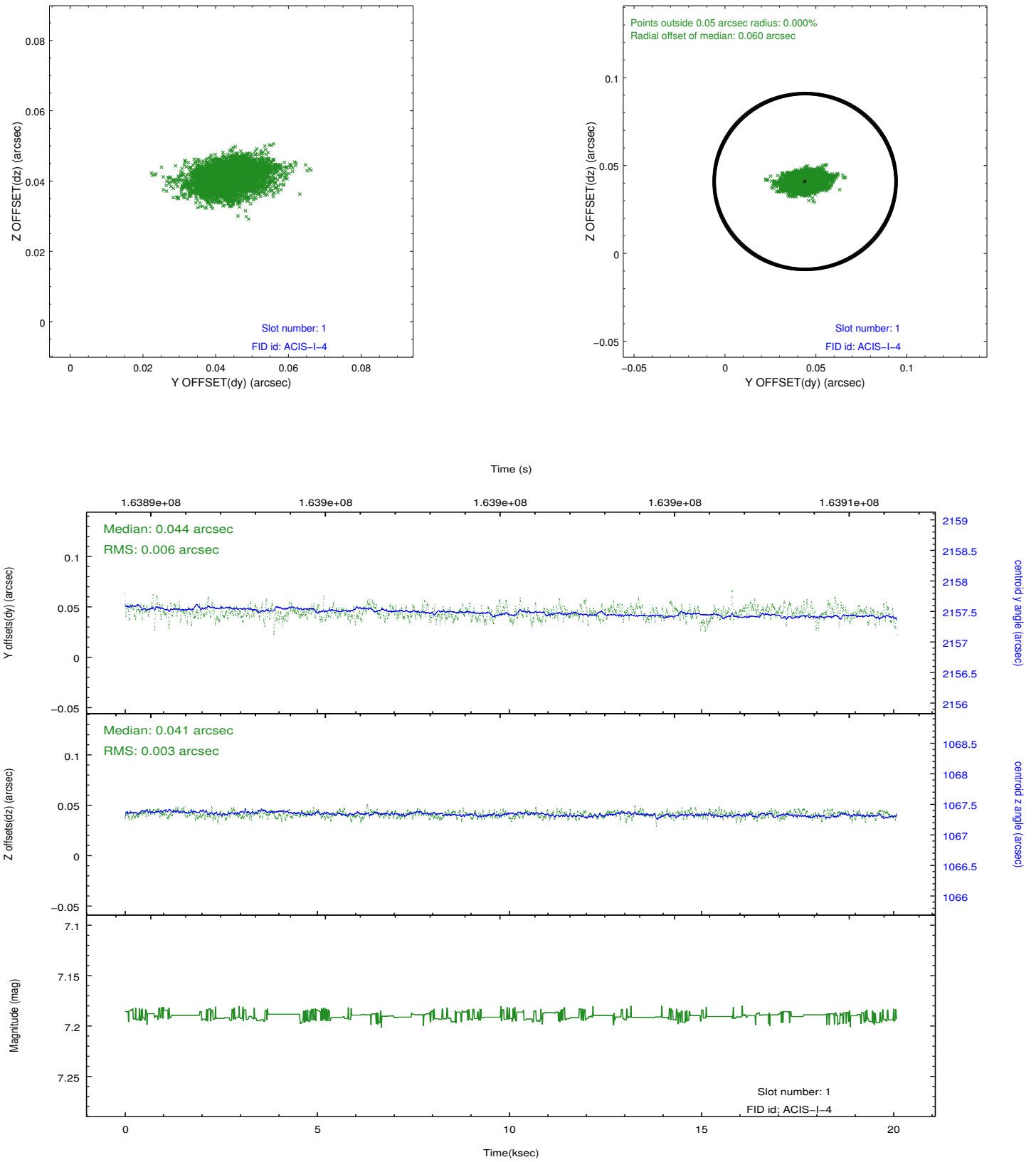


## 2.5 FID Slots

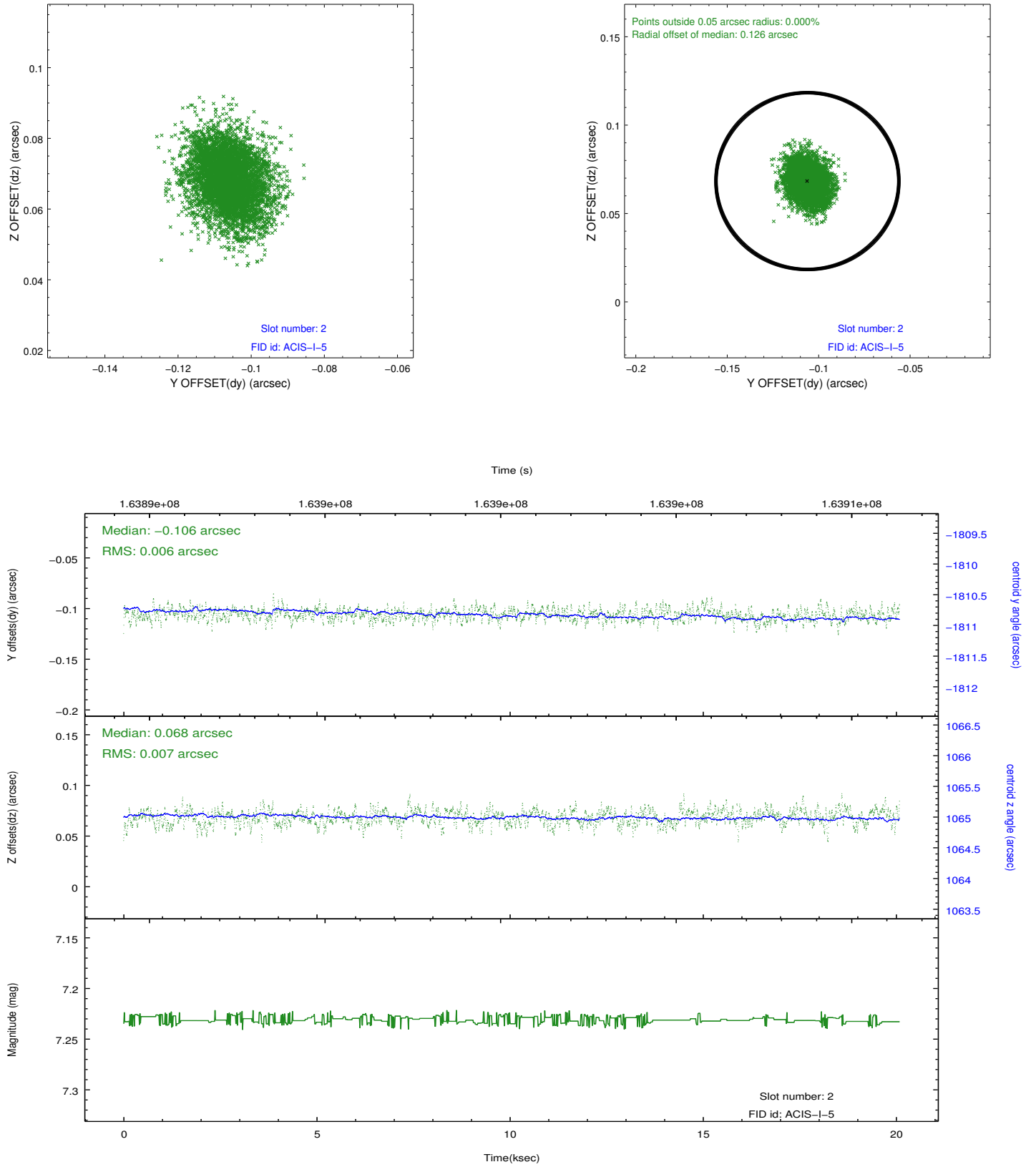
### 2.5.1 Slot 0



## 2.5.2 Slot 1



### 2.5.3 Slot 2



## **A Summary**

### **A.1 Status**

V&V Scientist	Jen Lauer
V&V Date (YYYY-MM-DD)	2012.11.08
V&V Edition	1
V&V Disposition and Status	OK
V&V Charge Time	19.737

### **A.2 Comments**