

V&V Reference Report

L2 ASCDS Version : 7.6.8

Observation 3766 - L2 Version 001
Chandra X-Ray Center

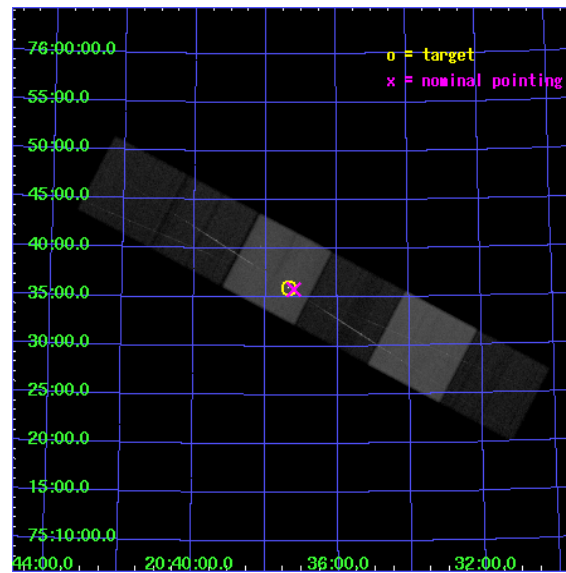
L2 Processing Date : Jul 8 2006

Contents

1	Front	2
2	OBI	3
2.1	OBI	3
2.1.1	Images	3
2.1.2	Bias	3
2.1.3	Parameters	4
2.1.4	Events	4
2.2	Compared Parameters	5
2.3	Aspect	6
2.4	Star Slots	9
2.4.1	Slot 3	9
2.4.2	Slot 4	10
2.4.3	Slot 5	11
2.4.4	Slot 6	12
2.4.5	Slot 7	13
2.5	FID Slots	14
2.5.1	Slot 0	14
2.5.2	Slot 1	15
2.5.3	Slot 2	16
3	Gratings	17
3.1	HEG Arm	17
3.2	MEG Arm	19
A	Summary	21
A.1	Status	21
A.2	Comments	21

1 Front

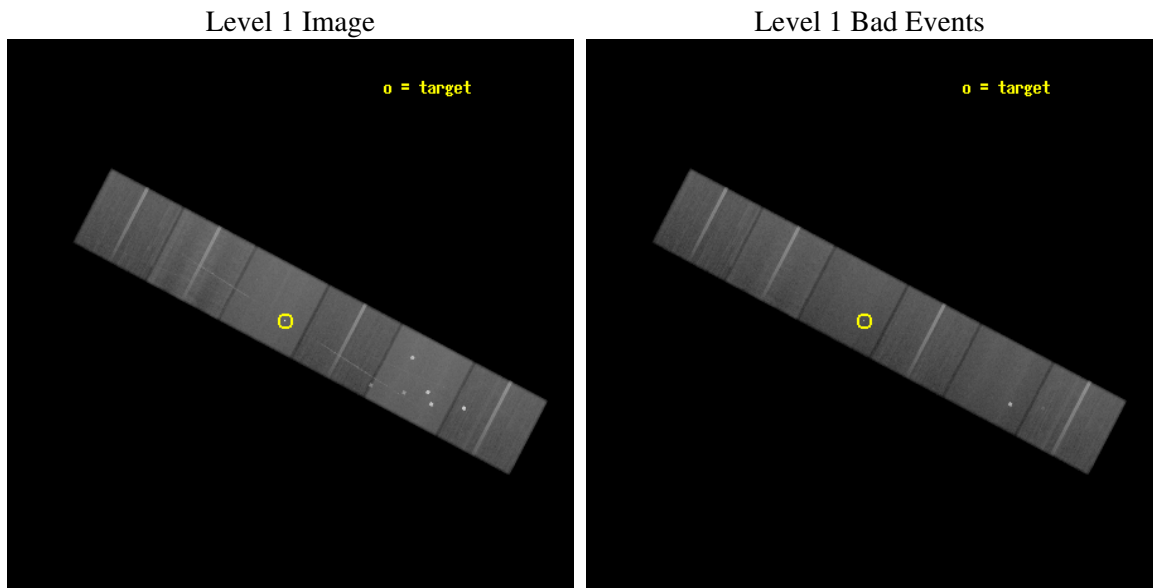
seq_num	200236
obs_id	3766
title	HETGS SPECTROSCOPY OF A CORONALLY ACTIVE CONTACT BINARY, VW CEP
observer	Dr. David Huenemoerder
object	VW CEP
dtcycle	0
cycle	P
ra_targ	309.339583
dec_targ	75.600417
ra_nom	309.30256972145
dec_nom	75.597493494458
roll_nom	207.71846538942
revision	2
ontime	118108.63701895
livetime	116613.07434053
ontime4	118108.59593916
ontime5	118108.67802906
ontime6	118111.95859975
ontime7	118108.63701895
ontime8	118111.95859975
ontime9	118111.95859975
l2events	1144462



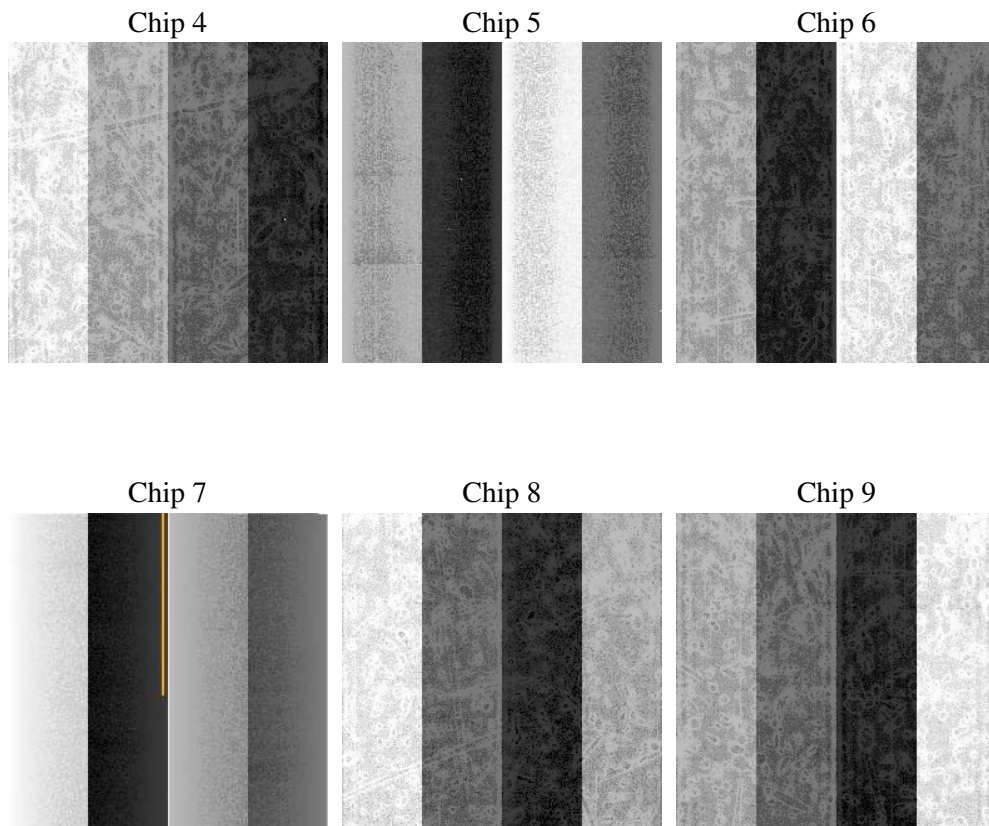
2 OBI

2.1 OBI

2.1.1 Images



2.1.2 Bias



2.1.3 Parameters

obi_num	0
ascdsver	7.6.8
caldsver	3.2.2
date	2006-07-07T23:54:57
revision	2

sched_exp_time	118472.772000
ontime	118121.53035447
ontime4	118118.28932446
ontime5	118124.7708165
ontime6	118128.01226512
ontime7	118121.53035447
ontime8	118128.01226512
ontime9	118128.01226512
l1events	5365190

2.1.4 Events

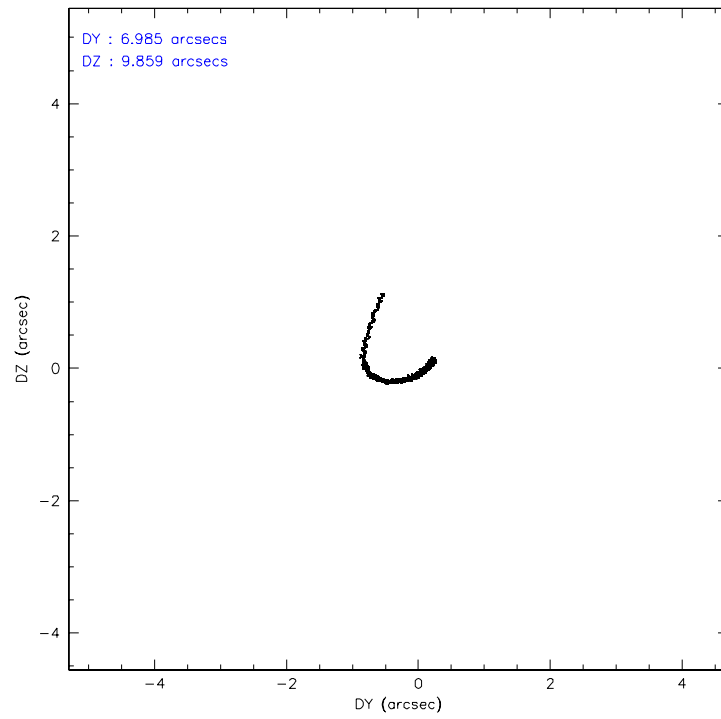
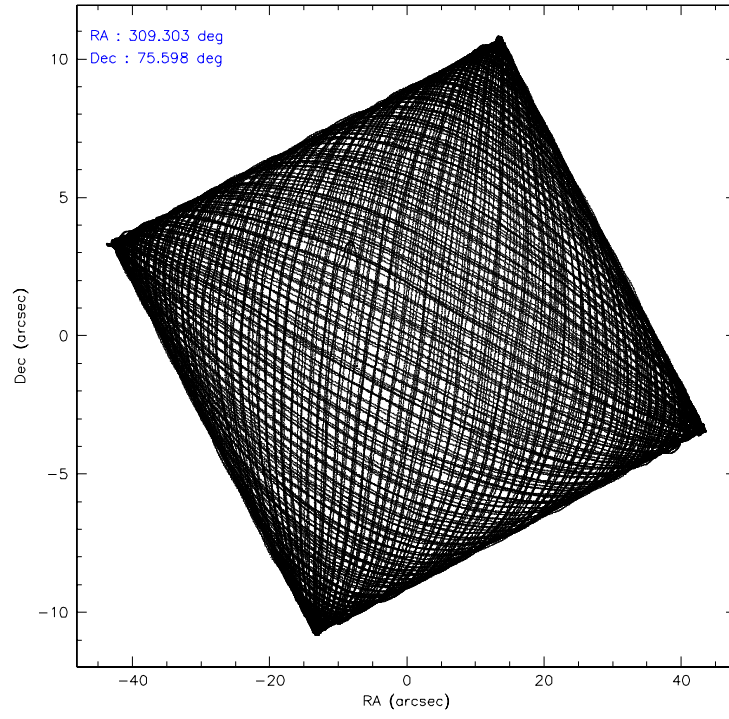
	ccd 4	ccd 5	ccd 6	ccd 7	ccd 8	ccd 9
level 1 events	837608	1123007	743982	993312	935285	731996
rejected events	716776	616760	650533	608939	736870	641328
rejected %	85%	54%	87%	61%	78%	87%

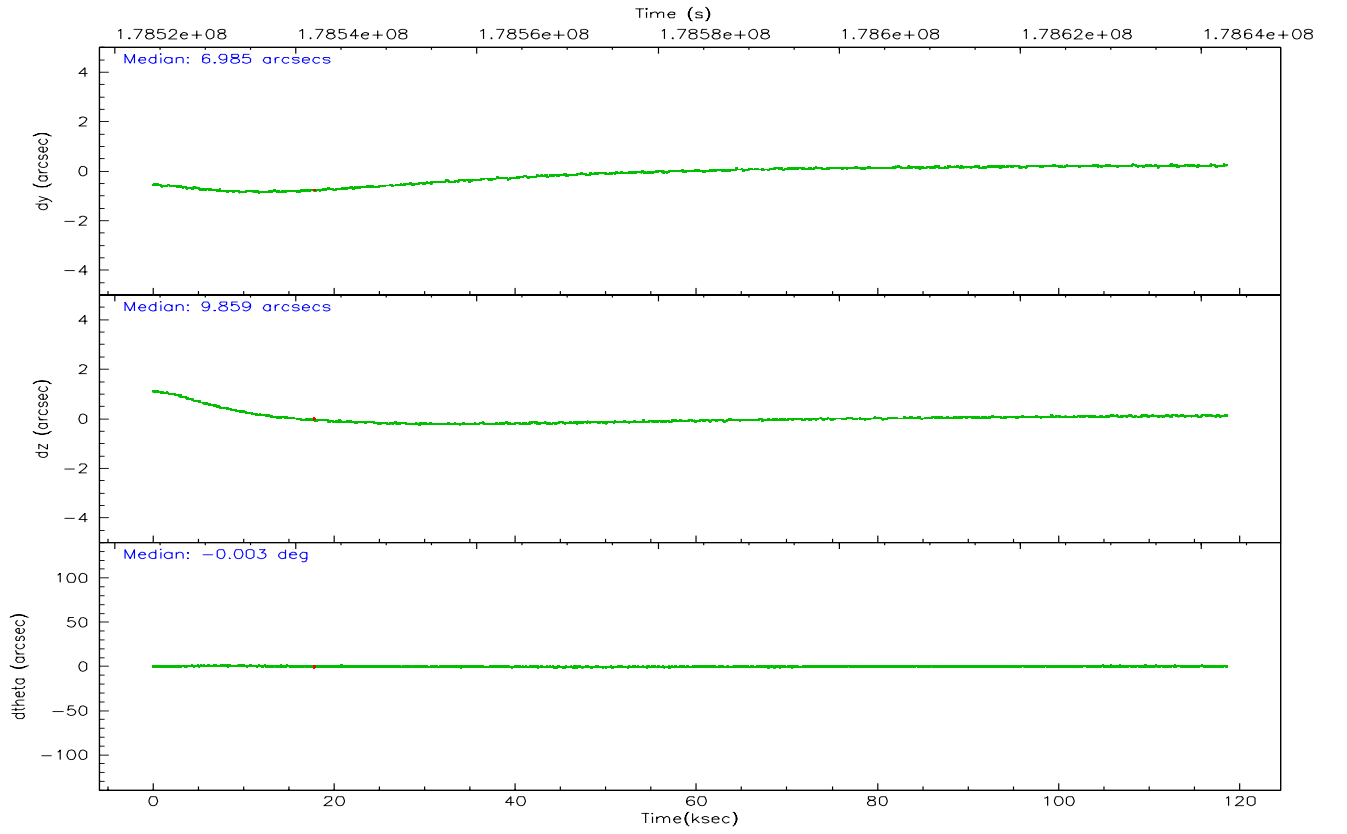
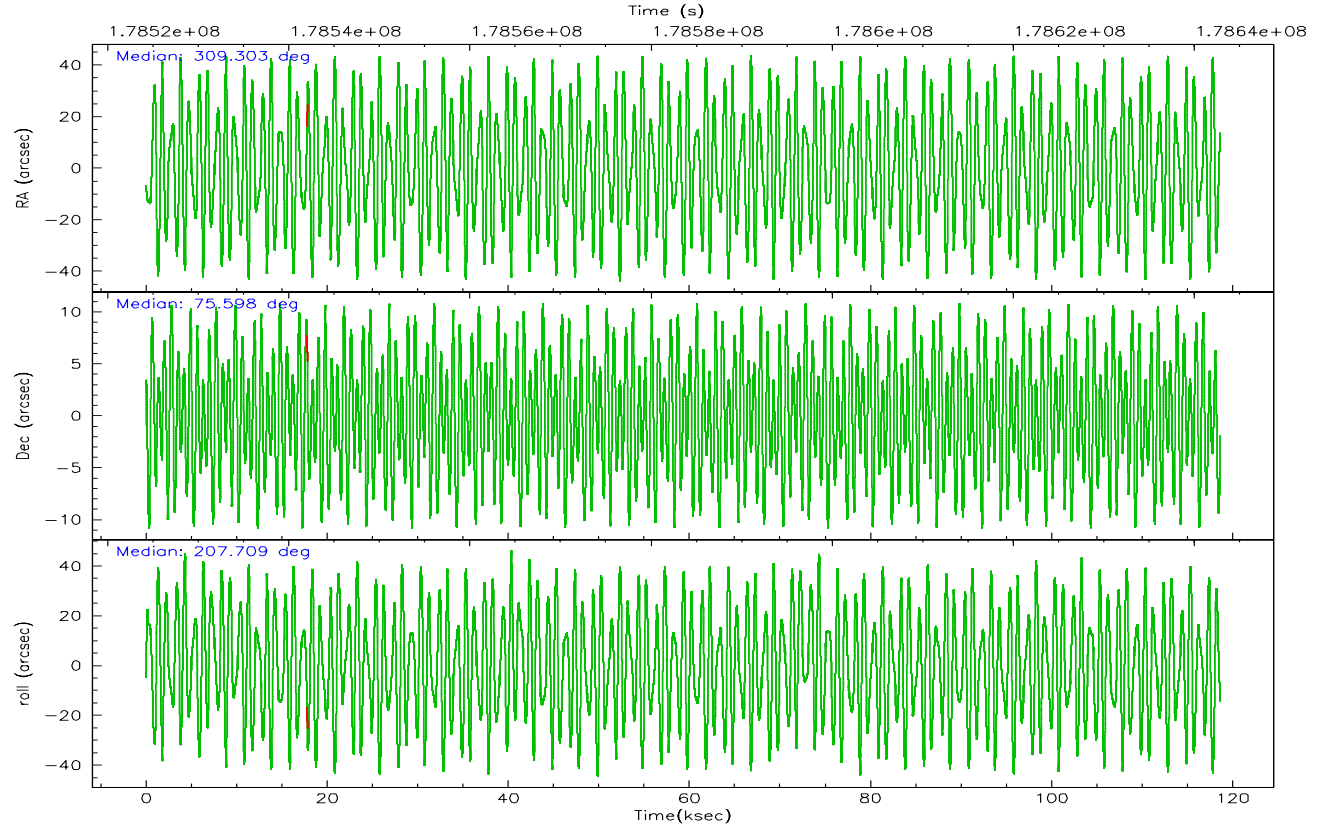
	ccd 4	ccd 5	ccd 6	ccd 7	ccd 8	ccd 9
grade 0 events	69400	66232	39823	24154	65506	37934
	8%	5%	5%	2%	7%	5%
grade 1 events	857	957	352	721	585	412
	0%	0%	0%	0%	0%	0%
grade 2 events	18761	147118	18366	95021	42589	17504
	2%	13%	2%	9%	4%	2%
grade 3 events	9386	13764	8813	20456	20572	9144
	1%	1%	1%	2%	2%	1%
grade 4 events	8954	9805	8627	19658	19618	8758
	1%	0%	1%	1%	2%	1%
grade 5 events	31903	62224	33490	65576	43525	35979
	3%	5%	4%	6%	4%	4%
grade 6 events	14345	269402	17831	225134	50160	17338
	1%	23%	2%	22%	5%	2%
grade 7 events	684002	553505	616680	542592	692730	604927
	81%	49%	82%	54%	74%	82%

2.2 Compared Parameters

Parameter	Planned	Actual	Parameter	Planned	Actual
Instrument	ACIS	ACIS	Obspar format version number	6	6
Detector	ACIS-456789	ACIS-456789	Obspar file type	PREDICTED	ACTUAL
Grating	HETG	HETG	Obspar update status	NONE	UPDATED
Data mode	FAINT	FAINT	On-chip summing requested	N	N
Observation mode	POINTING	POINTING	Subarray requested	NONE	NONE
Pointing RA	309.359821	309.3025697214482	Alternating exposures requested	N	N
Pointing Dec	75.620703	75.59749349445818	Primary exposure time	0.000000	3.2
Pointing Roll	207.506385	207.7184653894151			
SIM focus pos (mm)	-0.684267	-0.6828225247311905			
SIM defocus (mm)	0	0.001444936568705701			
SIM translation stage pos (mm)	-187.132523	-187.1254020033014			
SIM translation stage offset (mm)	-3	-3.007120579706367			
Observation start time	178524381.184000	178523415.6703			
Observation start date	2003-08-29T06:05:17	2003-08-29T05:50:15			
Observation end time	178642854.184000	178643168.47542			
Observation end date	2003-08-30T14:59:50	2003-08-30T15:06:08			
Read mode	TIMED	TIMED			

2.3 Aspect



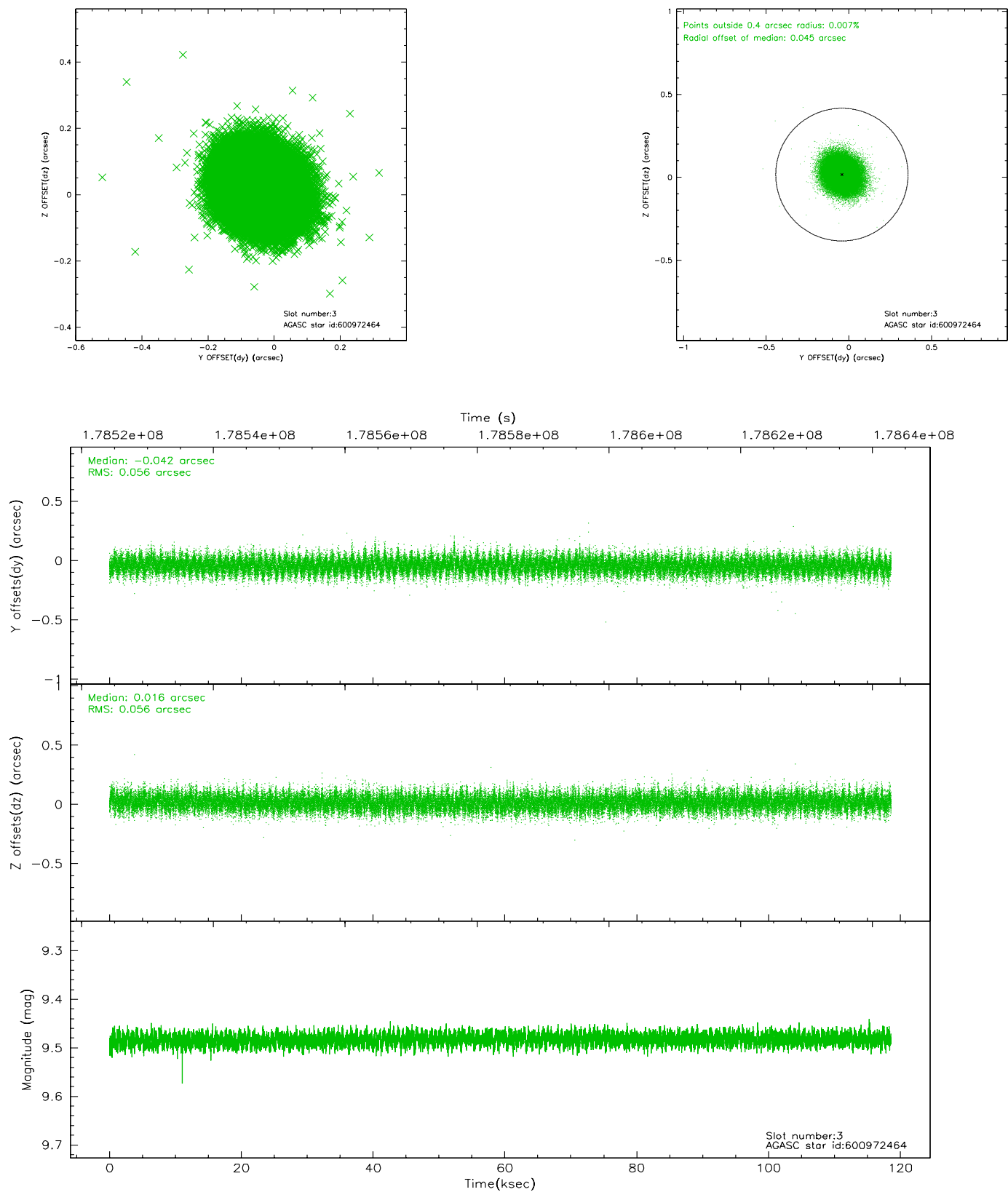


Slot Statistics

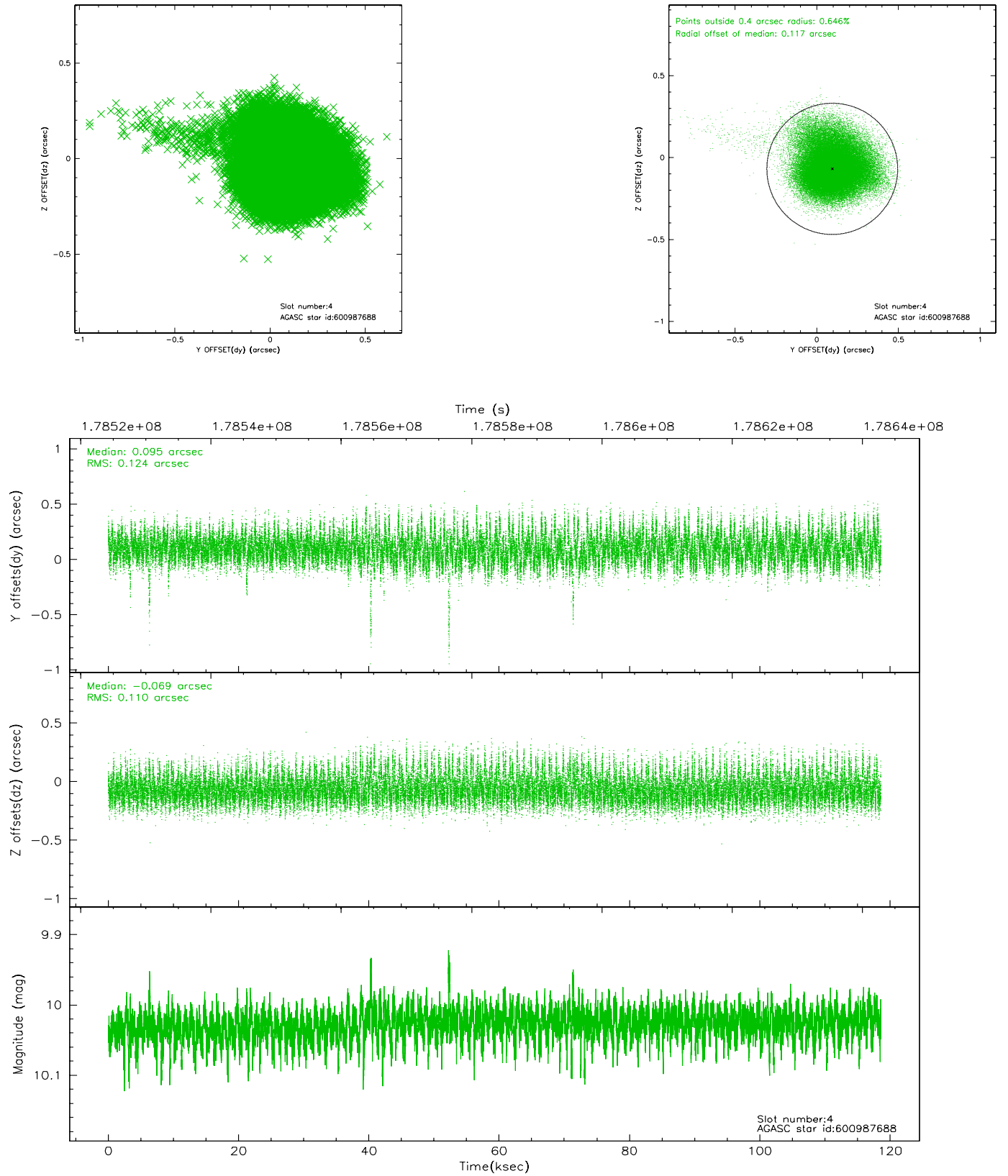
slot	status	id	mag	n_pts	med_dy	med_dz	dr1	dr2	ra	dec	mean_y	mean_z
0	FID	ACIS-S-2	7.09	28922	-0.041	-0.039	0.013	0.021	0.000000	0.000000	-759.44	-1793.25
1	FID	ACIS-S-4	7.19	28917	0.036	0.031	0.015	0.025	0.000000	0.000000	2153.98	115.36
2	FID	ACIS-S-5	7.23	28921	-0.024	0.018	0.010	0.017	0.000000	0.000000	-1812.37	108.96
3	GUIDE	600972464	9.48	57810	-0.042	0.016	0.084	0.138	307.698728	75.577780	1382.90	-569.25
4	GUIDE	600987688	10.03	57396	0.095	-0.069	0.172	0.287	309.257071	75.188572	802.50	1335.96
5	GUIDE	584456408	9.43	57815	-0.075	0.059	0.108	0.173	307.720285	74.988328	2397.24	1294.66
6	GUIDE	600965952	9.45	57810	0.007	0.047	0.102	0.164	306.721707	76.029779	1329.94	-2410.10
7	GUIDE	600991120	9.90	57718	0.011	-0.064	0.104	0.170	307.230922	75.271012	2293.45	185.82

2.4 Star Slots

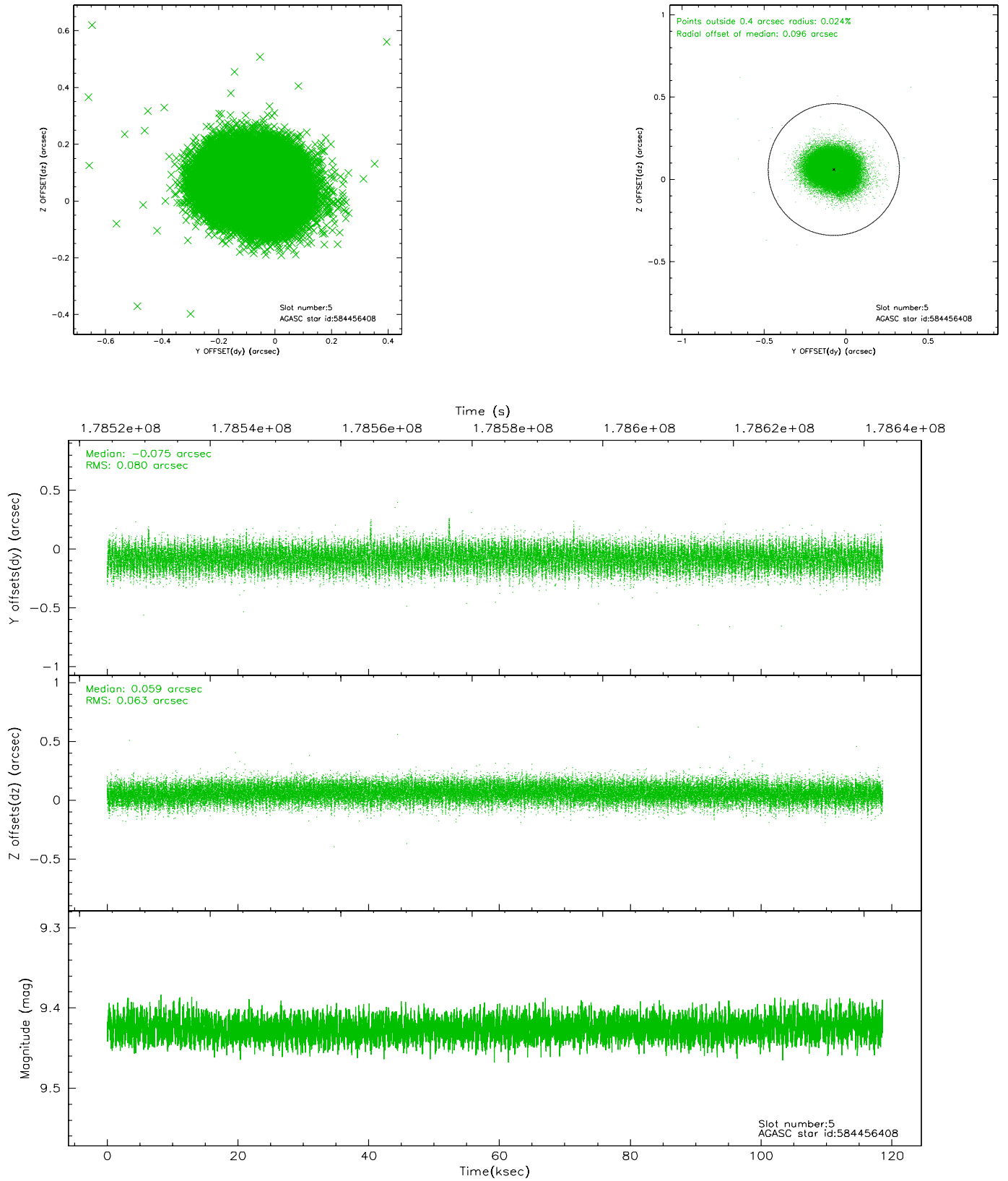
2.4.1 Slot 3



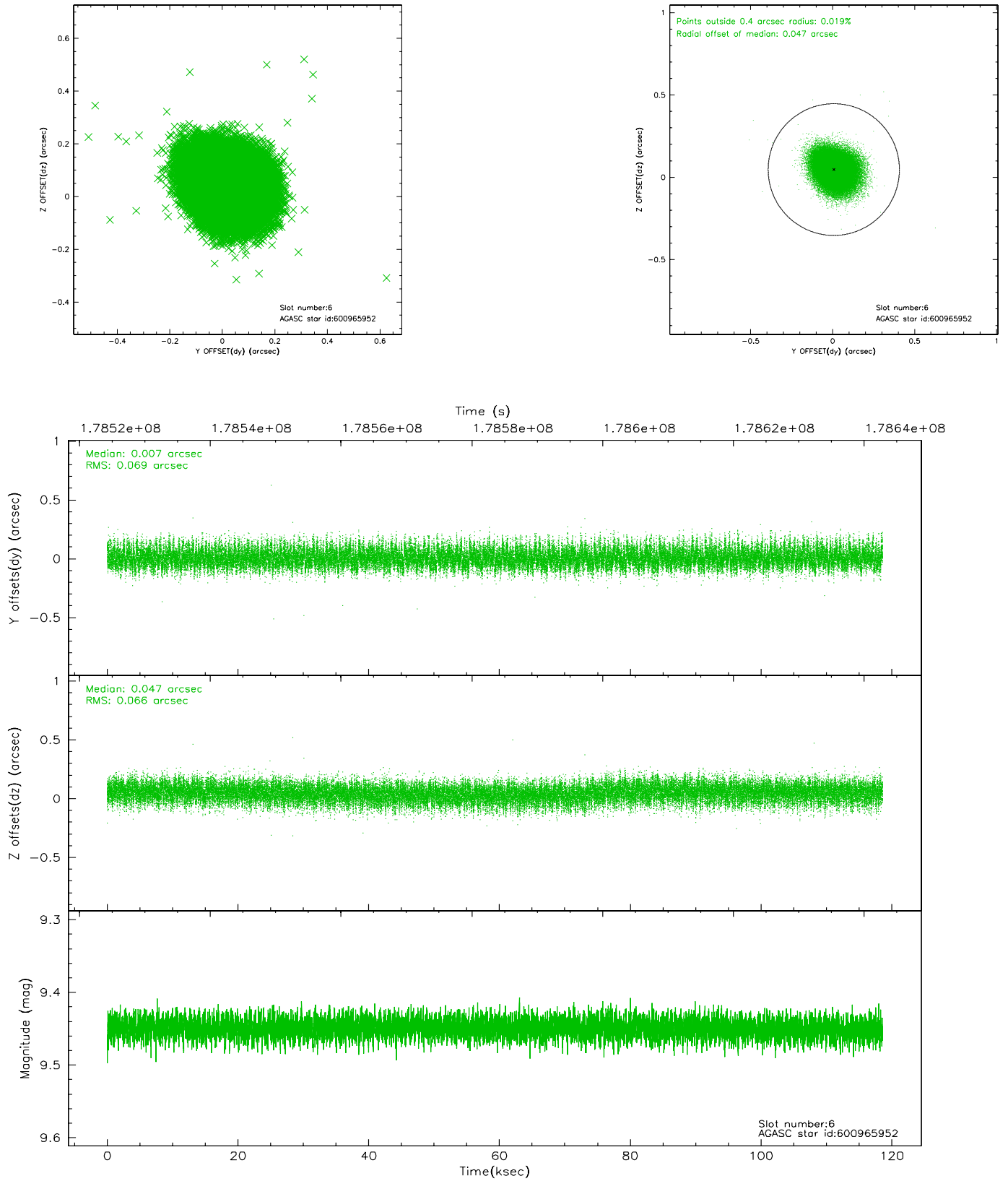
2.4.2 Slot 4



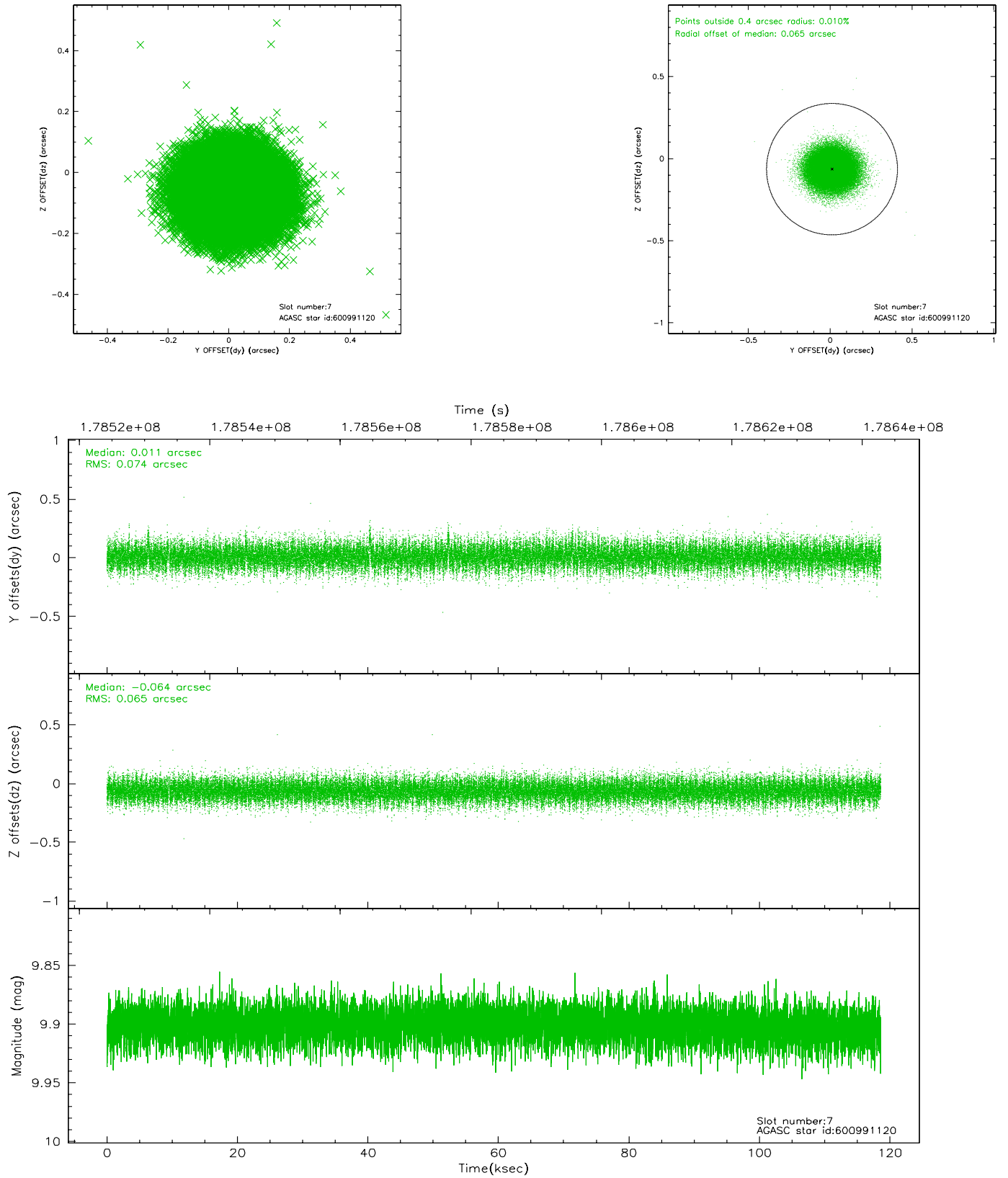
2.4.3 Slot 5



2.4.4 Slot 6

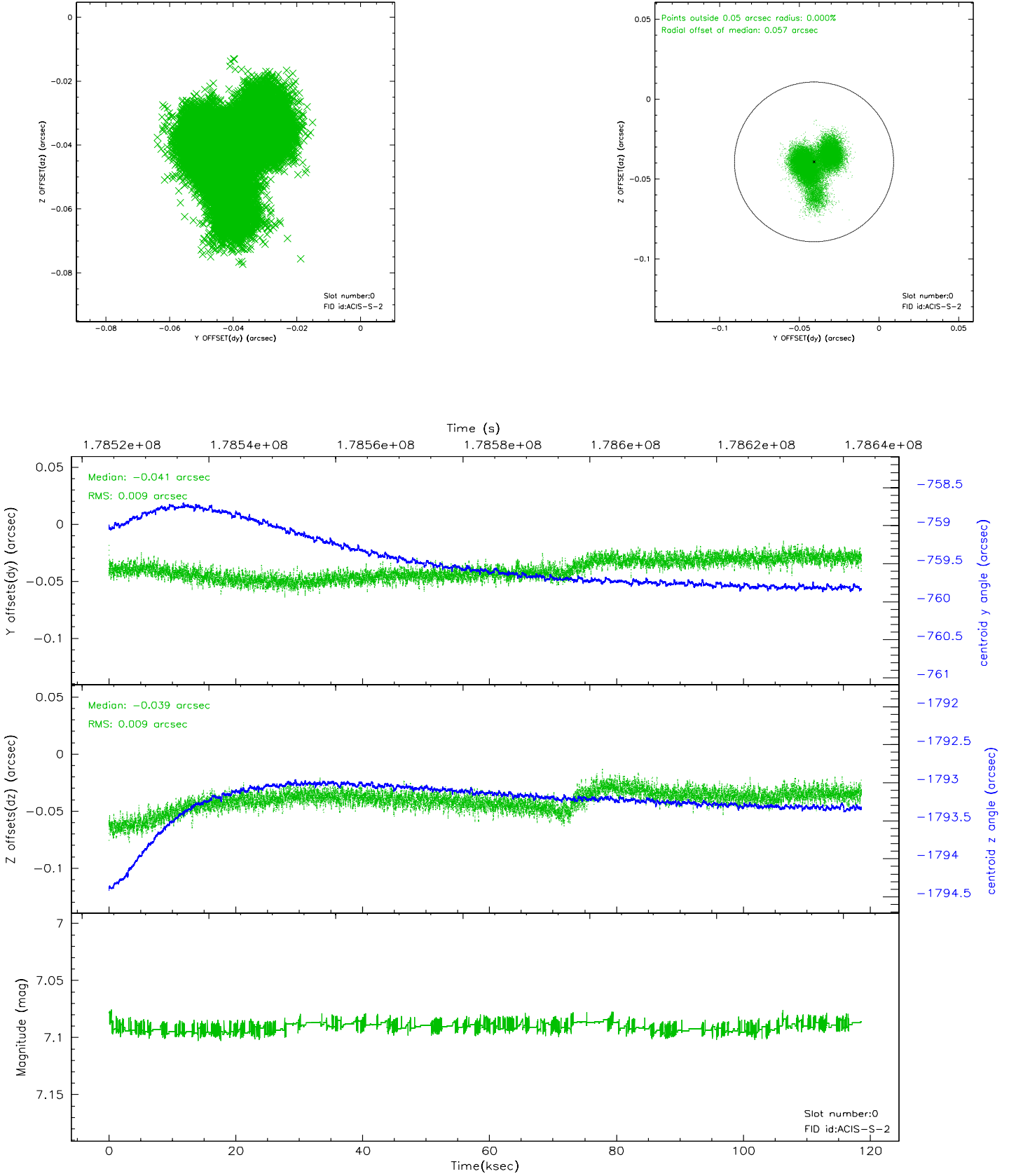


2.4.5 Slot 7

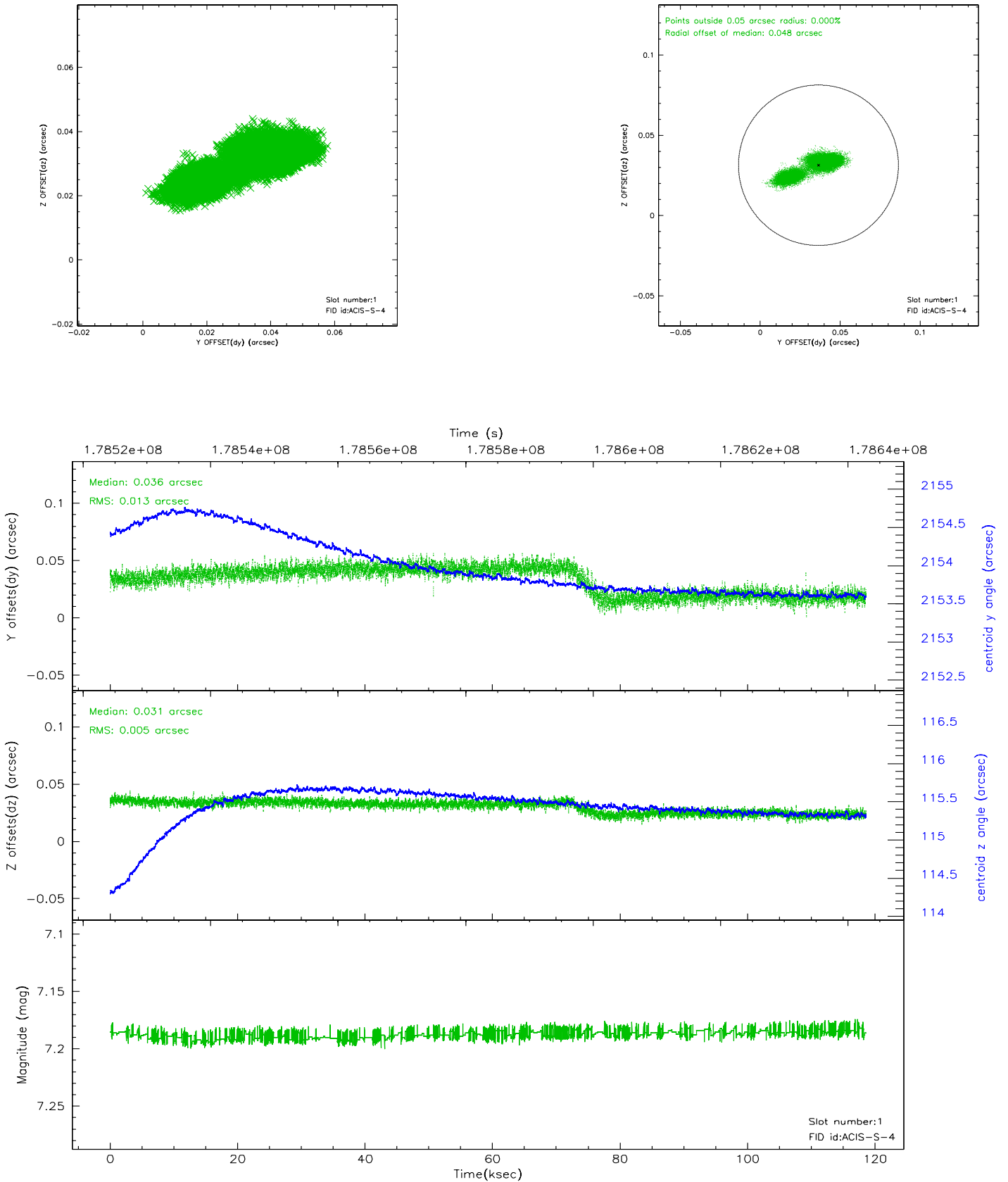


2.5 FID Slots

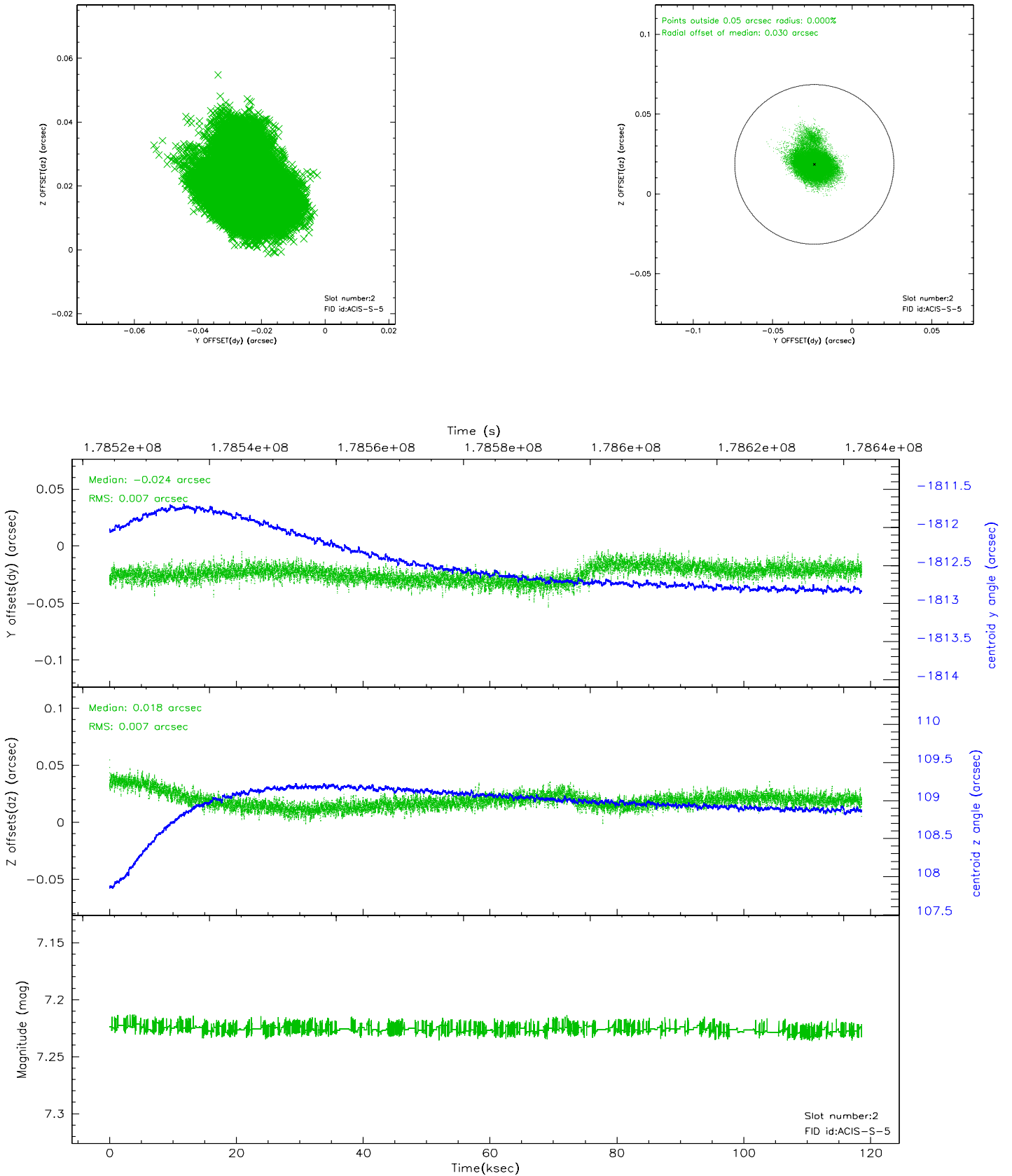
2.5.1 Slot 0



2.5.2 Slot 1

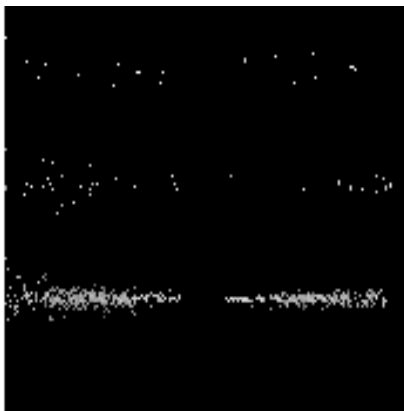


2.5.3 Slot 2

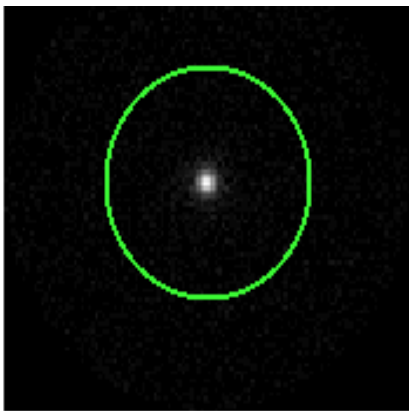


3 Gratings

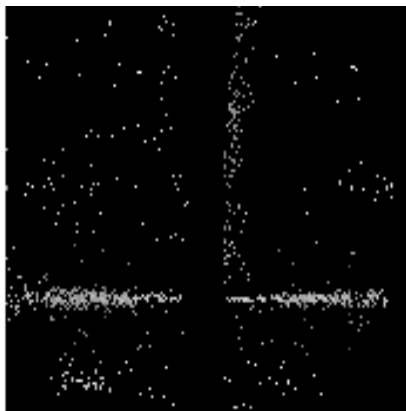
3.1 HEG Arm



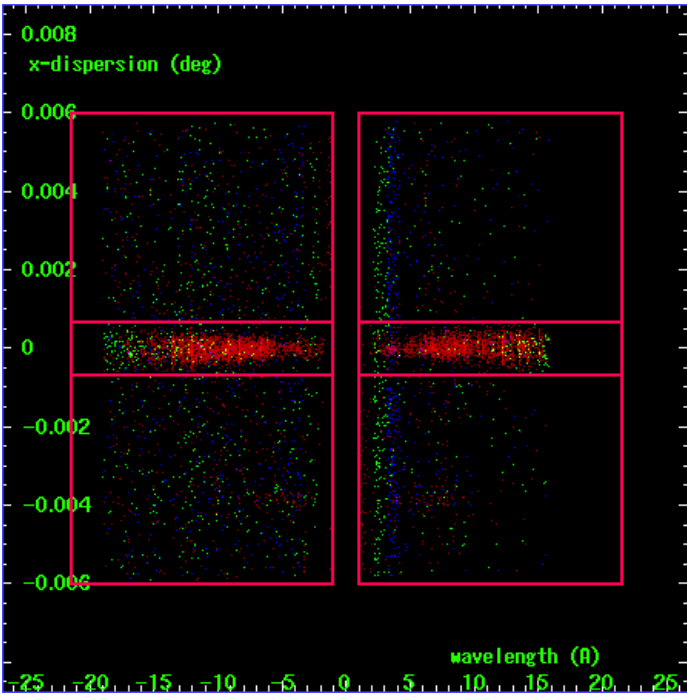
HEG Order Sort 123



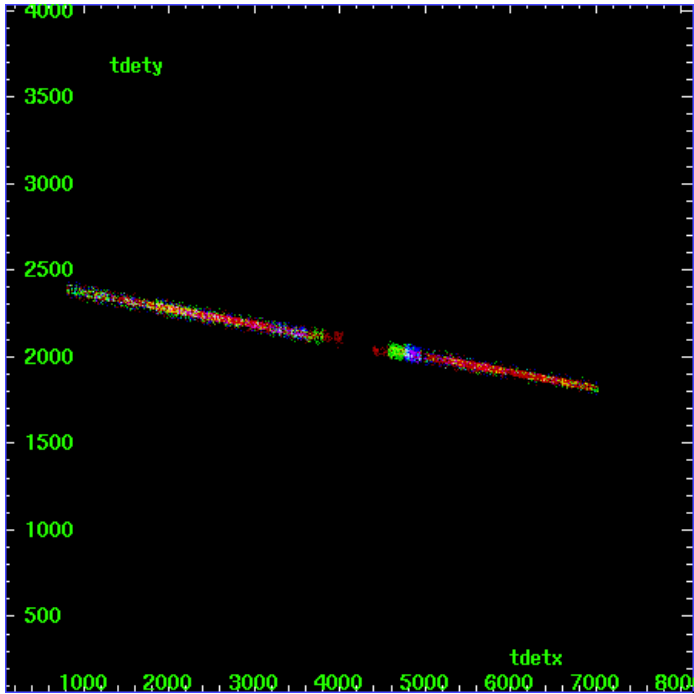
HEG Zero Order



HEG Order Sort ALL

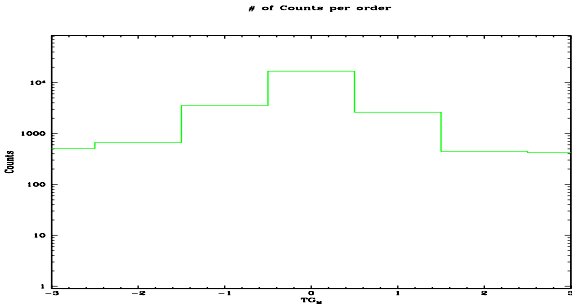


Spot Image HEG

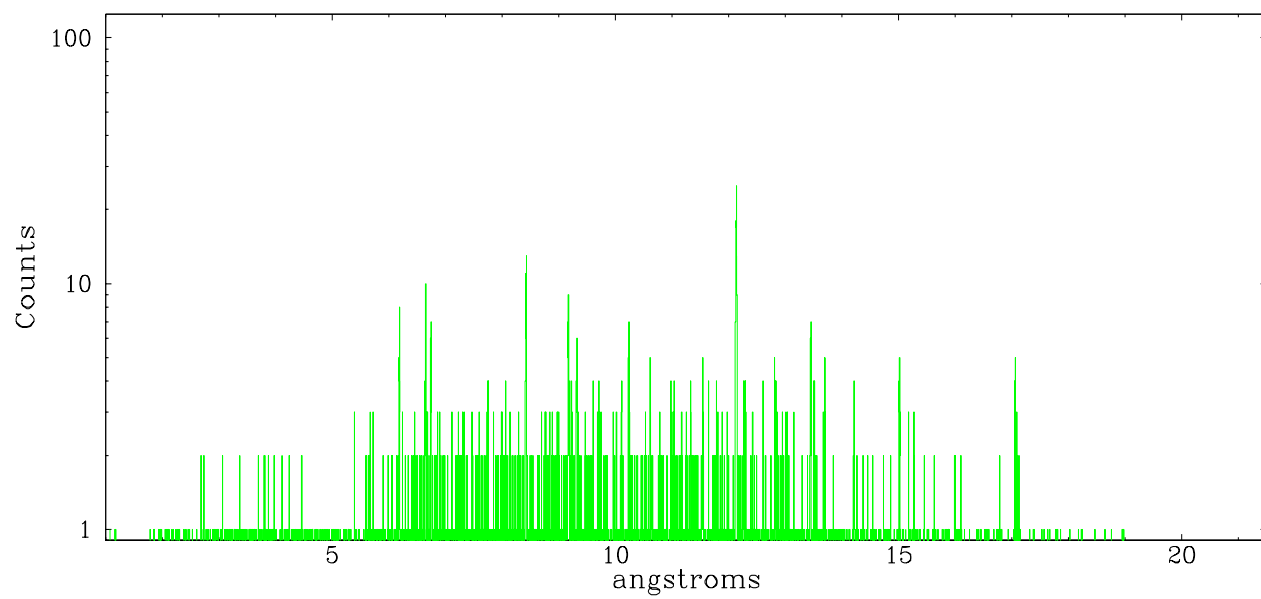


Full Detector HEG

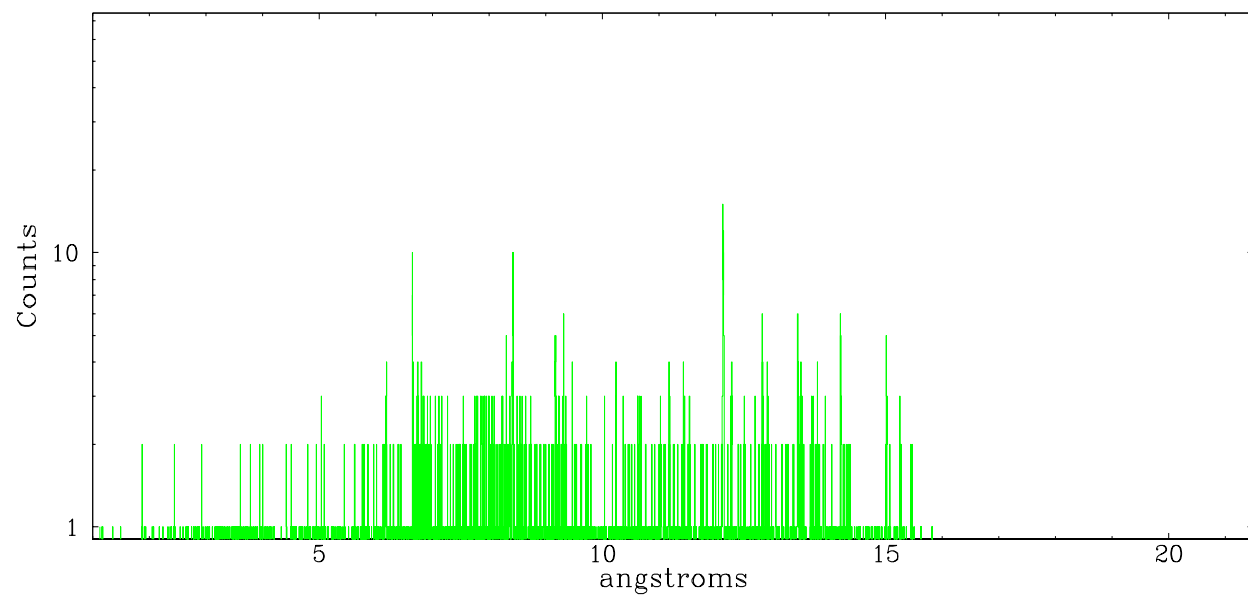
	order -3	order -2	order -1	order 0	order 1	order 2	order 3
Events	508	665	3530	16693	2601	445	421



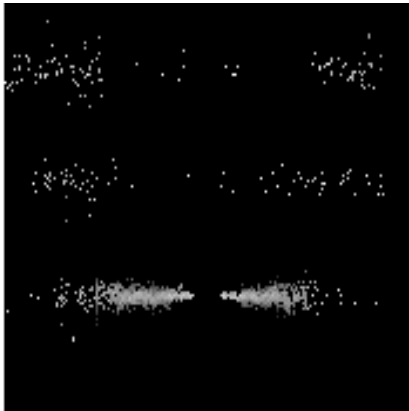
heg order -1



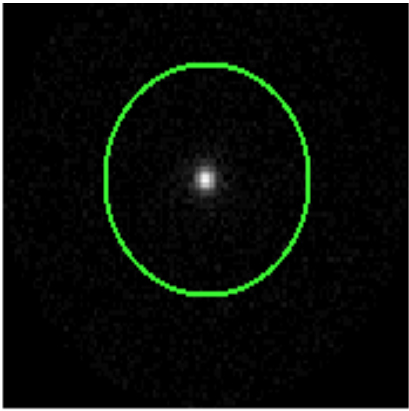
heg order +1



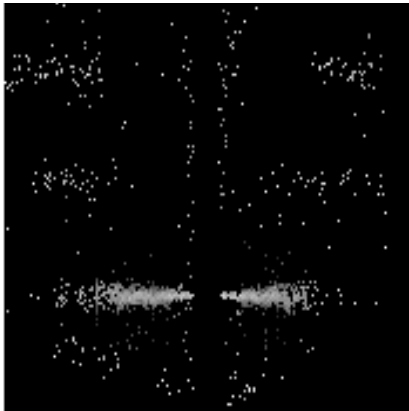
3.2 MEG Arm



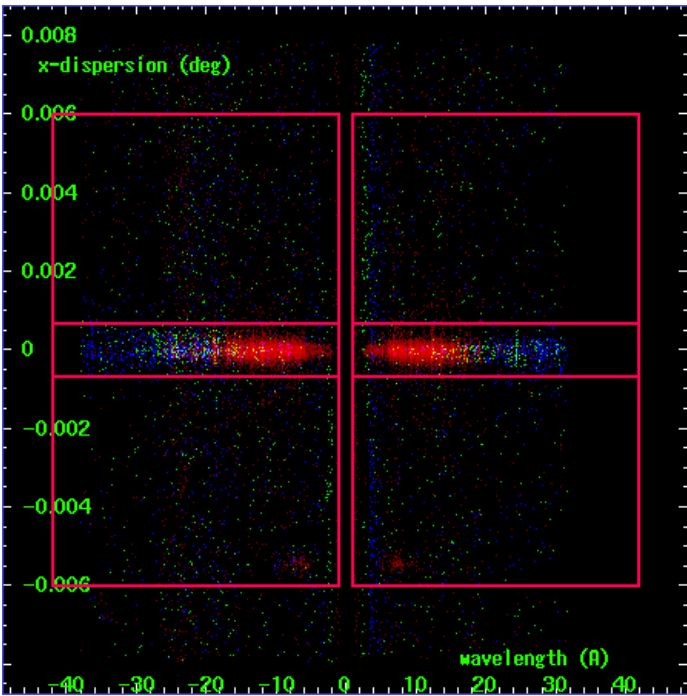
MEG Order Sort 123



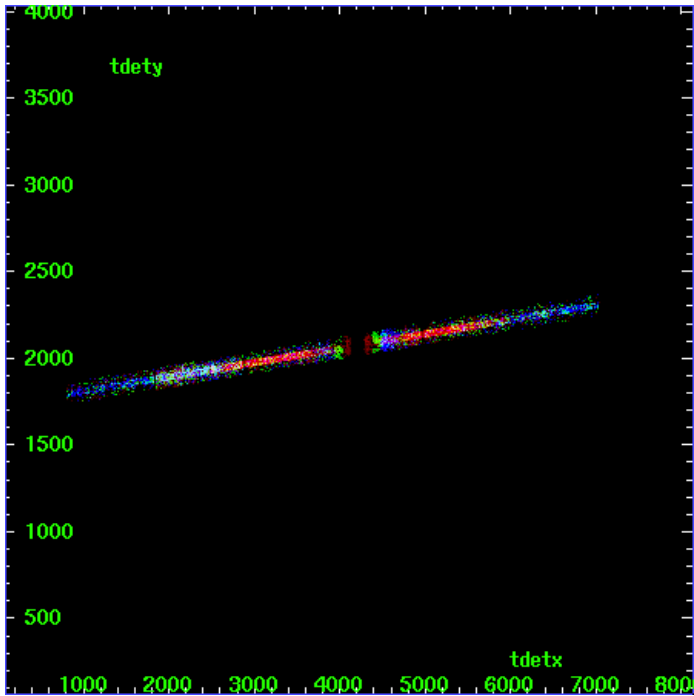
MEG Zero Order



MEG Order Sort ALL

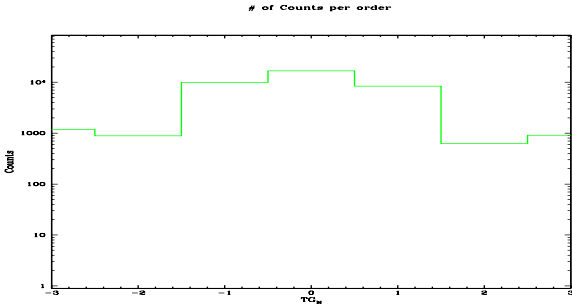


Spot Image MEG

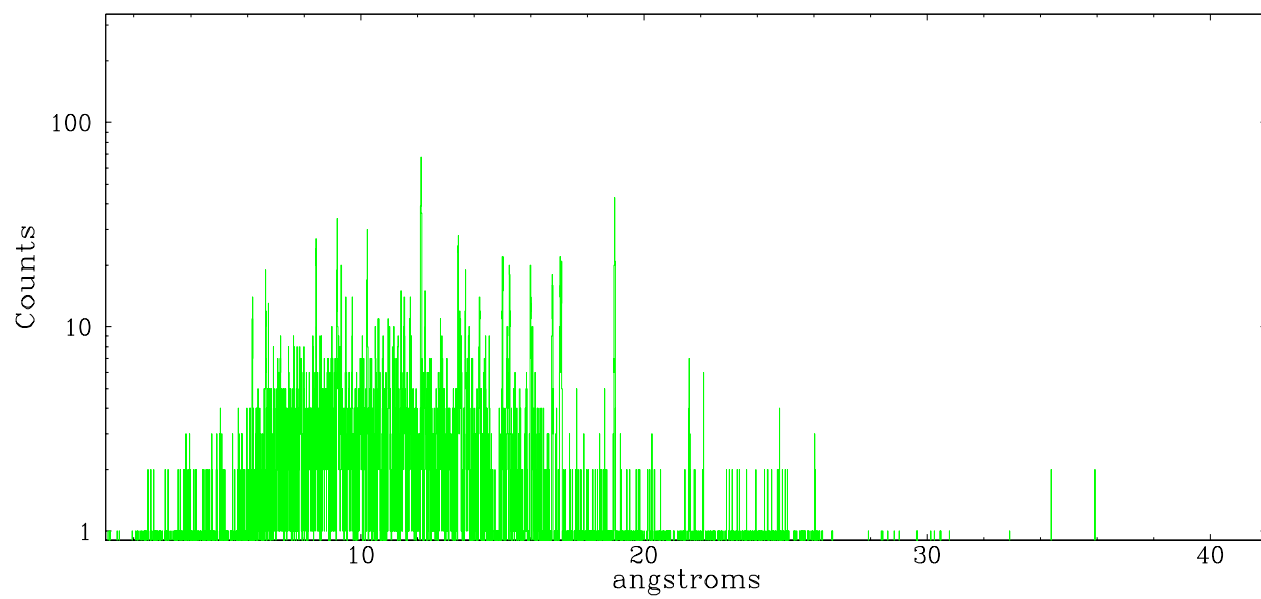


Full Detector MEG

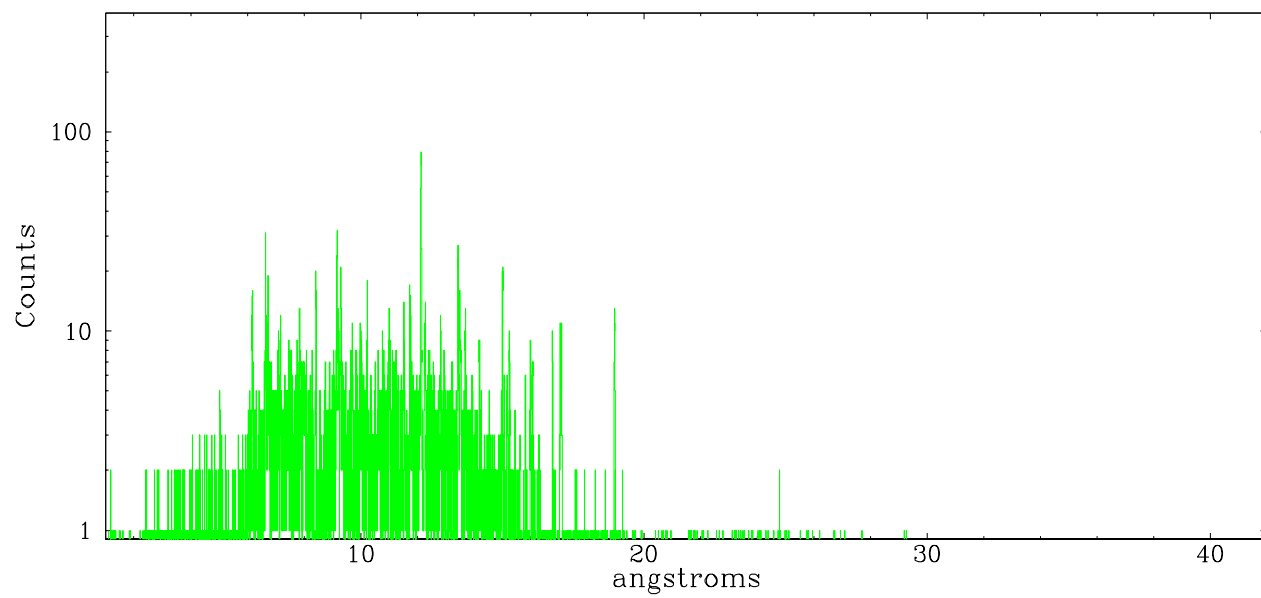
	order -3	order -2	order -1	order 0	order 1	order 2	order 3
Events	1176	885	9878	16693	8347	621	910



meg order -1



meg order +1



A Summary

A.1 Status

V&V Scientist	Beth Sundheim
V&V Date (YYYY-MM-DD)	2006.07.10
V&V Edition	1
V&V Disposition and Status	OK
V&V Charge Time	118.108

A.2 Comments