

V&V Reference Report

L2 ASCDS Version : 7.6.9

Observation 3706 - L2 Version 001
Chandra X-Ray Center

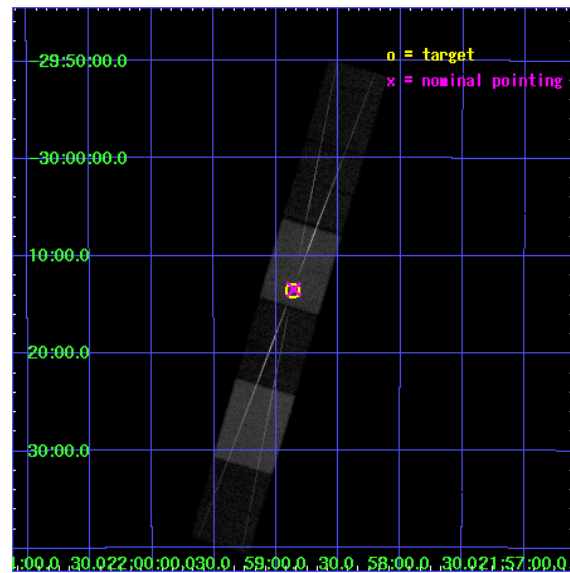
L2 Processing Date : Oct 17 2006

Contents

1	Front	2
2	OBI	3
2.1	OBI	3
2.1.1	Images	3
2.1.2	Bias	3
2.1.3	Parameters	4
2.1.4	Events	4
2.2	Compared Parameters	5
2.3	Aspect	6
2.4	Star Slots	9
2.4.1	Slot 3	9
2.4.2	Slot 4	10
2.4.3	Slot 5	11
2.4.4	Slot 6	12
2.4.5	Slot 7	13
2.5	FID Slots	14
2.5.1	Slot 0	14
2.5.2	Slot 1	15
2.5.3	Slot 2	16
3	Gratings	17
3.1	HEG Arm	17
3.2	MEG Arm	19
A	Summary	21
A.1	Status	21
A.2	Comments	21

1 Front

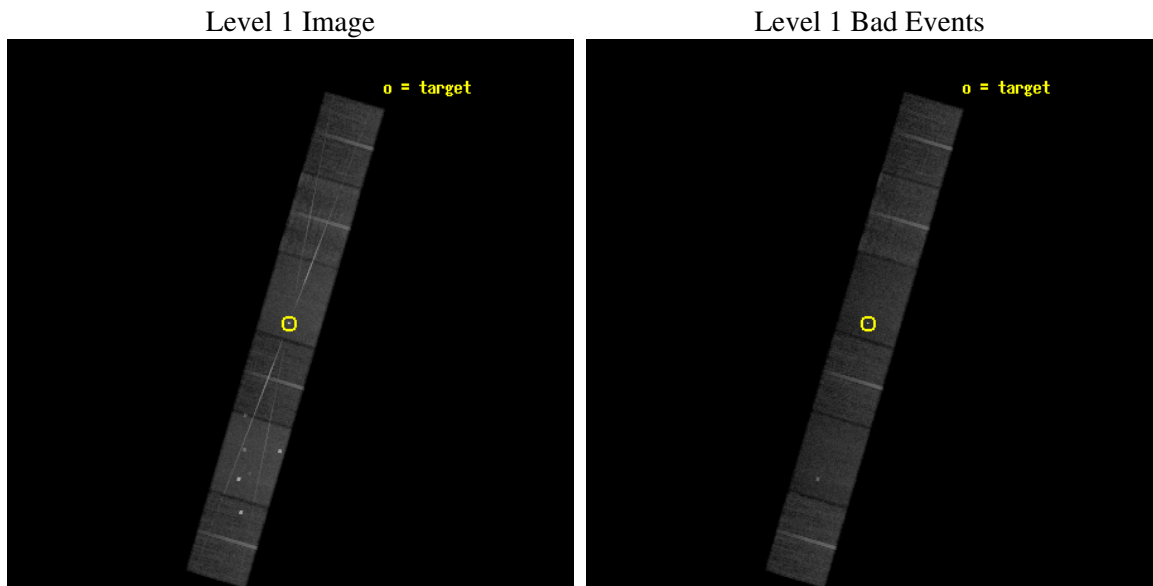
seq_num	790082
obs_id	3706
title	AO4 CALIBRATION OBSERVATIONS OF PKS2155-304
observer	Dr. CXC Calibration
object	PKS2155-304
dtcycle	0
cycle	P
ra_targ	329.716667
dec_targ	-30.225556
ra_nom	329.71433519588
dec_nom	-30.224600344644
roll_nom	286.40660905609
revision	2
ontime	28160.0
livetime	27705.191575103
ontime4	28160.0
ontime5	28160.0
ontime6	28160.0
ontime7	28160.0
ontime8	28160.0
ontime9	28160.0
l2events	261232



2 OBI

2.1 OBI

2.1.1 Images

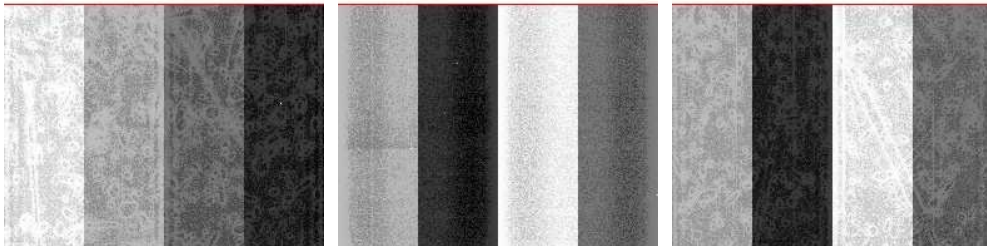


2.1.2 Bias

Chip 4

Chip 5

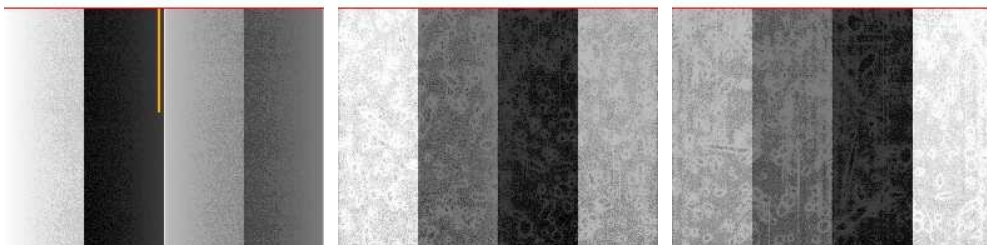
Chip 6



Chip 7

Chip 8

Chip 9



2.1.3 Parameters

obi_num	1
ascdsver	7.6.9
caldsver	3.2.3
date	2006-10-13T16:32:49
revision	2

sched_exp_time	28000.000000
ontime	28164.543124139
ontime4	28164.543124139
ontime5	28167.084134221
ontime6	28167.084134221
ontime7	28164.543124139
ontime8	28167.084134221
ontime9	28167.084134221
l1events	1057891

2.1.4 Events

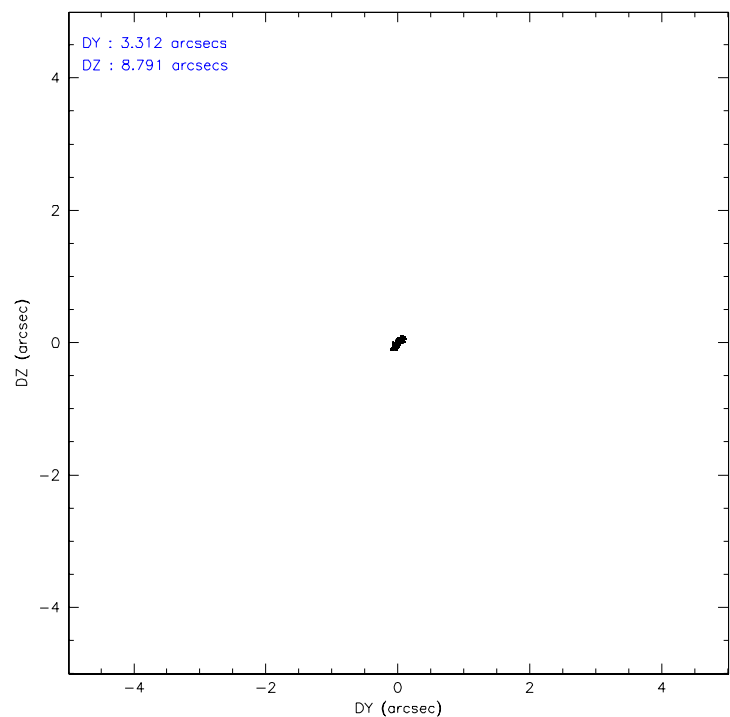
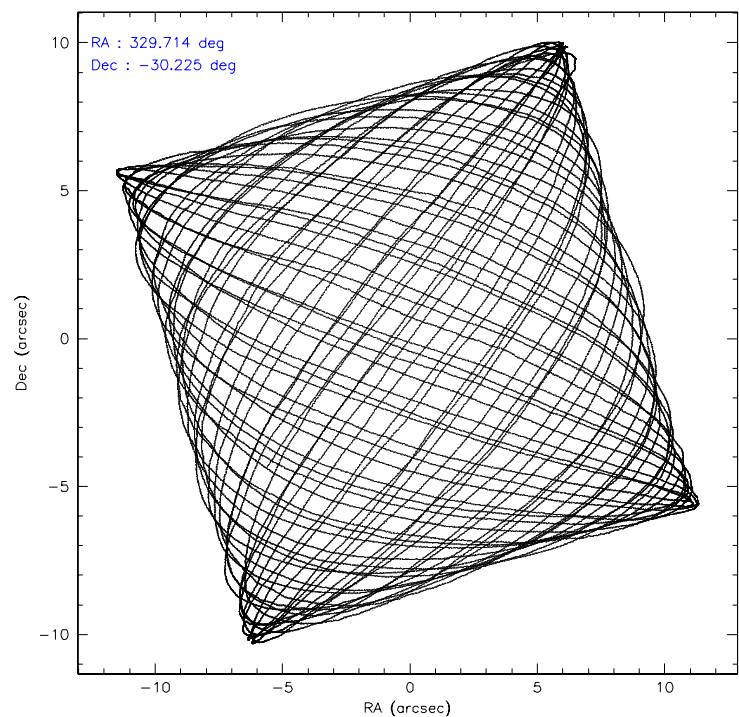
	ccd 4	ccd 5	ccd 6	ccd 7	ccd 8	ccd 9
level 1 events	159582	218012	153027	203762	185872	137636
rejected events	133699	110033	121514	114962	139760	118756
rejected %	83%	50%	79%	56%	75%	86%

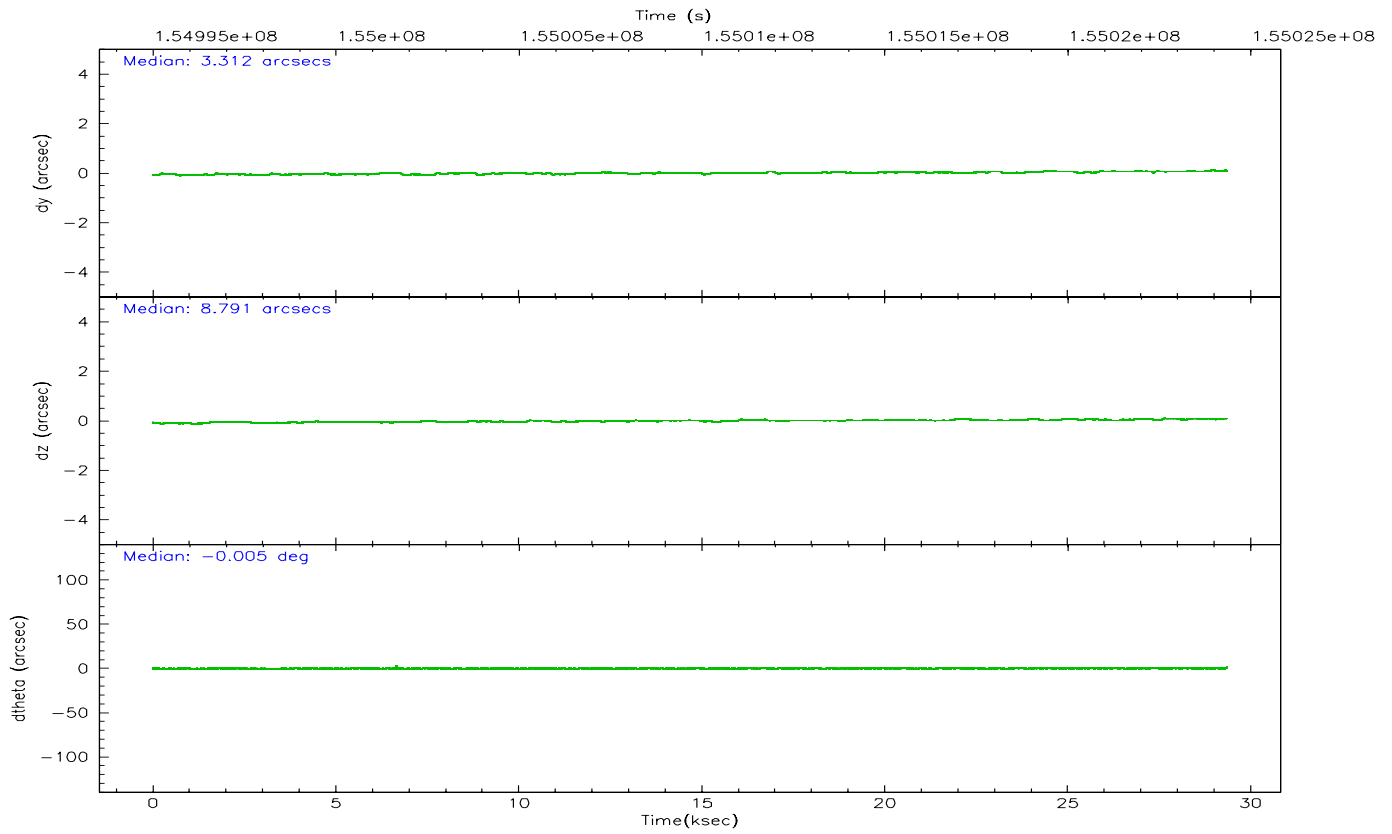
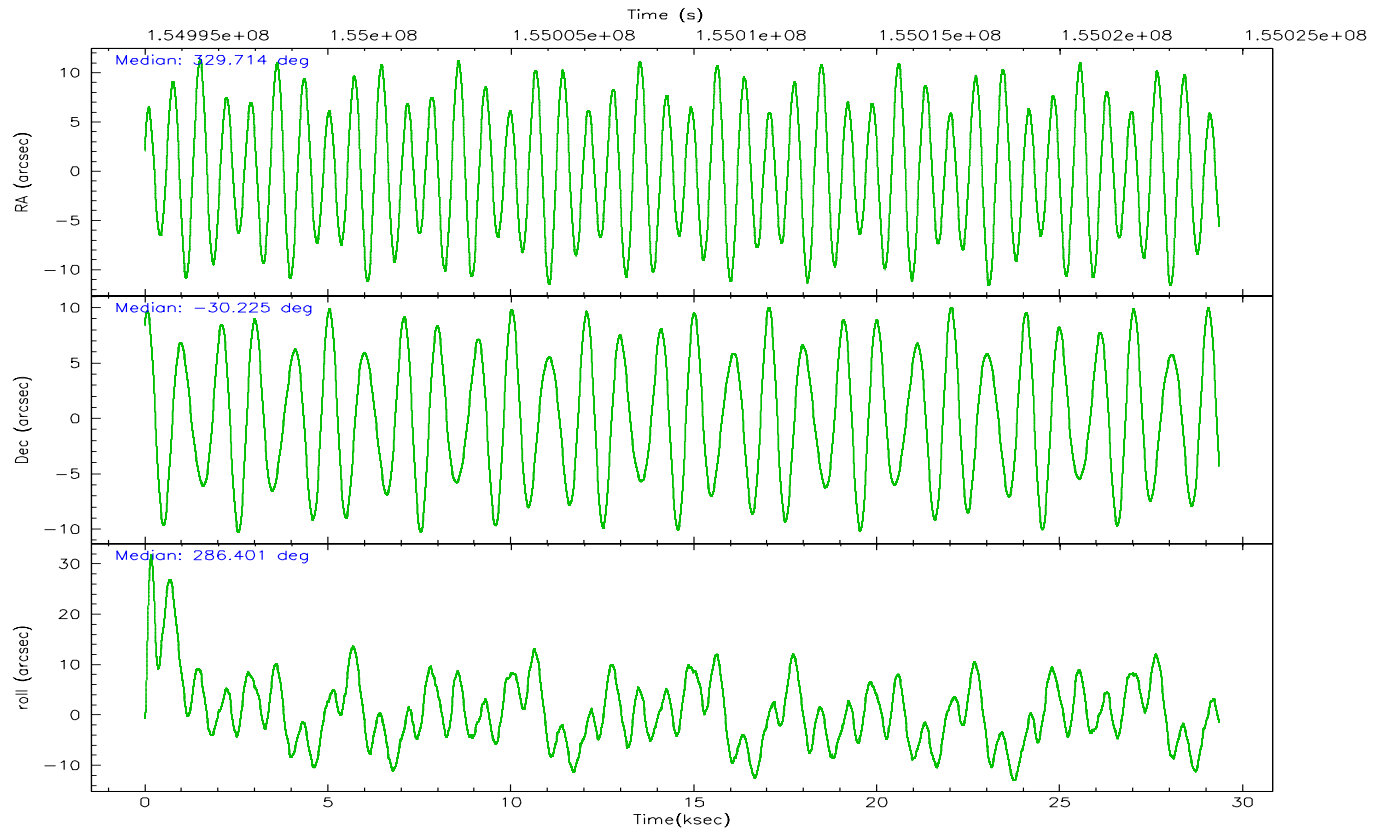
	ccd 4	ccd 5	ccd 6	ccd 7	ccd 8	ccd 9
grade 0 events	15852	21930	19037	8209	19981	8814
	9%	10%	12%	4%	10%	6%
grade 1 events	137	1176	94	331	122	63
	0%	0%	0%	0%	0%	0%
grade 2 events	3771	30239	4698	21293	8367	3333
	2%	13%	3%	10%	4%	2%
grade 3 events	1810	3007	2210	6024	4420	1790
	1%	1%	1%	2%	2%	1%
grade 4 events	1800	2975	2135	5905	4092	1765
	1%	1%	1%	2%	2%	1%
grade 5 events	5515	10001	5834	14275	7788	6463
	3%	4%	3%	7%	4%	4%
grade 6 events	2654	49854	3440	47384	9257	3182
	1%	22%	2%	23%	4%	2%
grade 7 events	128043	98830	115579	100341	131845	112226
	80%	45%	75%	49%	70%	81%

2.2 Compared Parameters

Parameter	Planned	Actual	Parameter	Planned	Actual
Instrument	ACIS	ACIS	Obspar format version number	6	6
Detector	ACIS-456789	ACIS-456789	Obspar file type	PREDICTED	ACTUAL
Grating	HETG	HETG	Obspar update status	NONE	UPDATED
Data mode	FAINT	FAINT	Number of optional ACIS chips dropped	0	0
Observation mode	POINTING	POINTING	On-chip summing requested	N	N
Pointing RA	329.691222	329.7143351958814	Subarray requested	CUSTOM	CUSTOM
Pointing Dec	-30.206099	-30.22460034464398	Subarray start row	1	1
Pointing Roll	286.238350	286.4066090560927	Subarray row count	774	774
SIM focus pos (mm)	-0.684267	-0.6828225247311905	Alternating exposures requested	N	N
SIM defocus (mm)	0	0.001444936568705701	Primary exposure time	0.000000	2.5
SIM translation stage pos (mm)	-187.132523	-187.1254020033014			
SIM translation stage offset (mm)	-3	-3.007120579706367			
Observation start time	154996354.184000	154994807.7141			
Observation start date	2002-11-29T22:31:30	2002-11-29T22:06:47			
Observation end time	155024354.184000	155024817.66536			
Observation end date	2002-11-30T06:18:10	2002-11-30T06:26:57			
Read mode	TIMED	TIMED			

2.3 Aspect



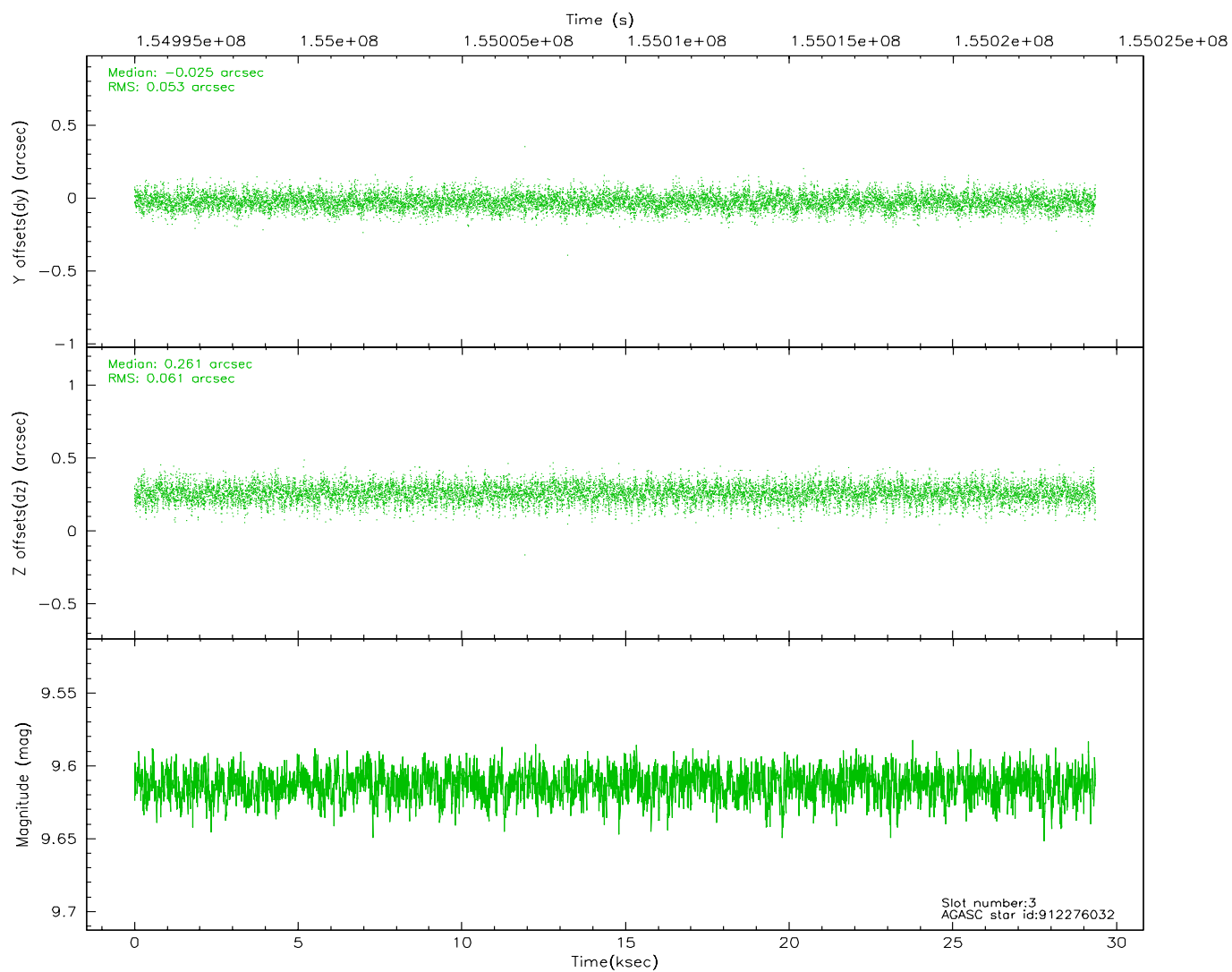
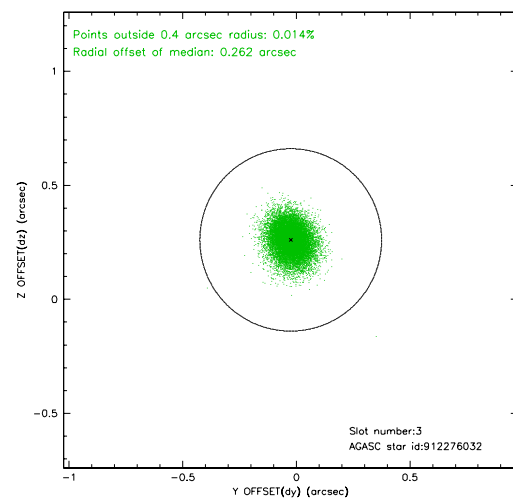
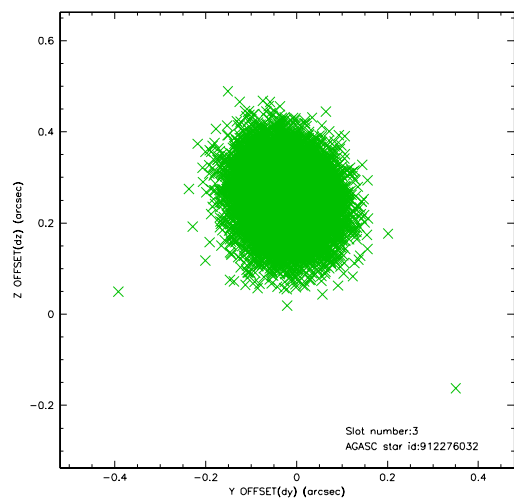


Slot Statistics

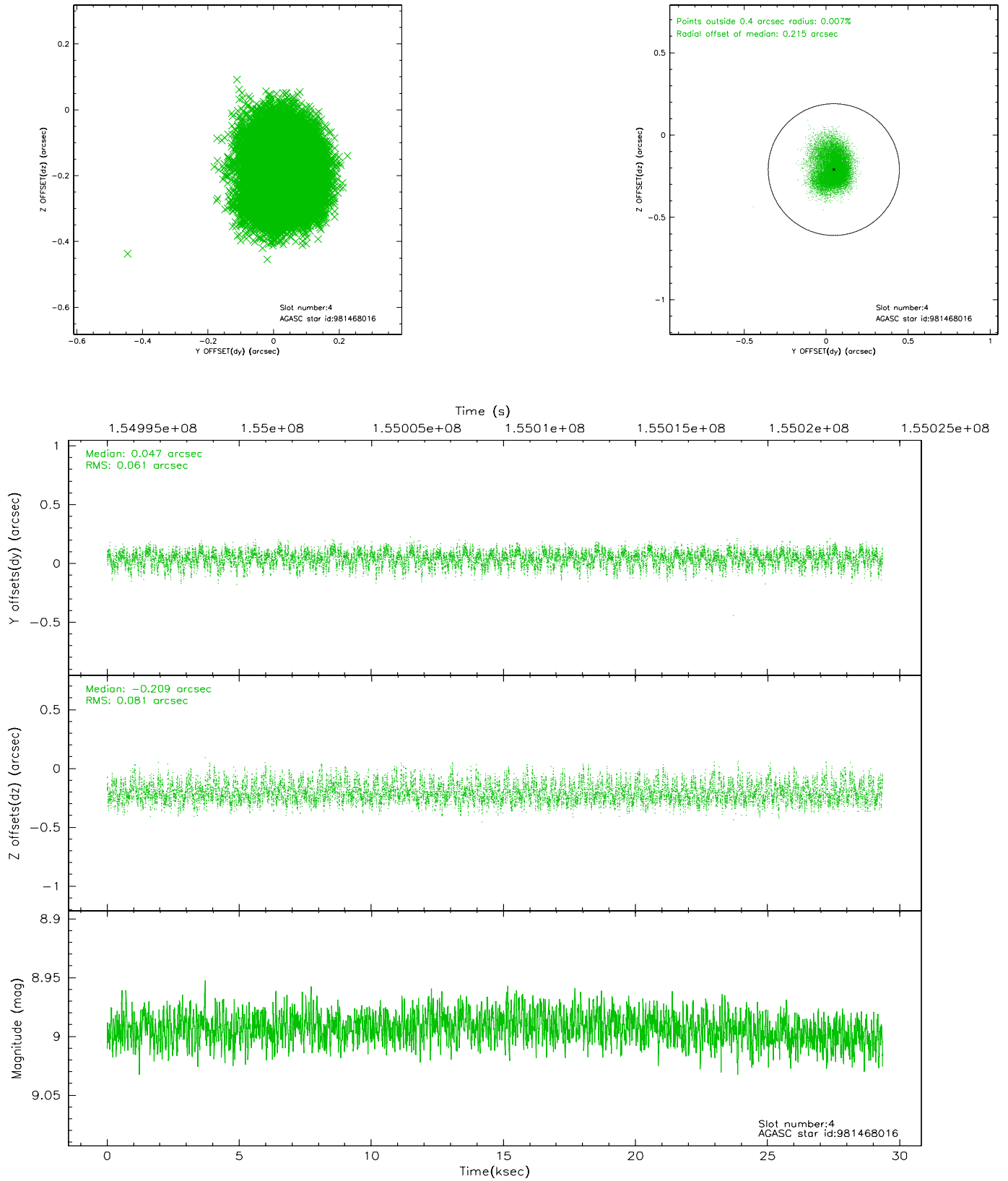
slot	status	id	mag	n_pts	med_dy	med_dz	dr1	dr2	ra	dec	mean_y	mean_z
0	FID	ACIS-S-2	7.10	7160	-0.043	-0.002	0.007	0.011	0.000000	0.000000	-755.76	-1792.10
1	FID	ACIS-S-4	7.20	7161	-0.012	0.021	0.005	0.009	0.000000	0.000000	2157.47	116.37
2	FID	ACIS-S-5	7.23	7161	0.024	-0.011	0.007	0.012	0.000000	0.000000	-1808.48	110.02
3	GUIDE	912276032	9.61	14309	-0.025	0.261	0.085	0.140	329.395967	-29.803466	-1648.40	-480.64
4	GUIDE	981468016	8.99	14318	0.047	-0.209	0.108	0.175	328.842457	-30.034984	-1321.57	-2370.75
5	GUIDE	981468128	9.36	14318	0.069	-0.046	0.099	0.170	329.756350	-30.158334	-108.31	242.34
6	GUIDE	981478152	9.41	14048	-0.015	0.071	0.082	0.135	329.415589	-30.057192	-753.78	-675.27
7	GUIDE	912275088	9.06	14311	-0.075	-0.081	0.077	0.126	329.619228	-29.738698	-1678.51	253.97

2.4 Star Slots

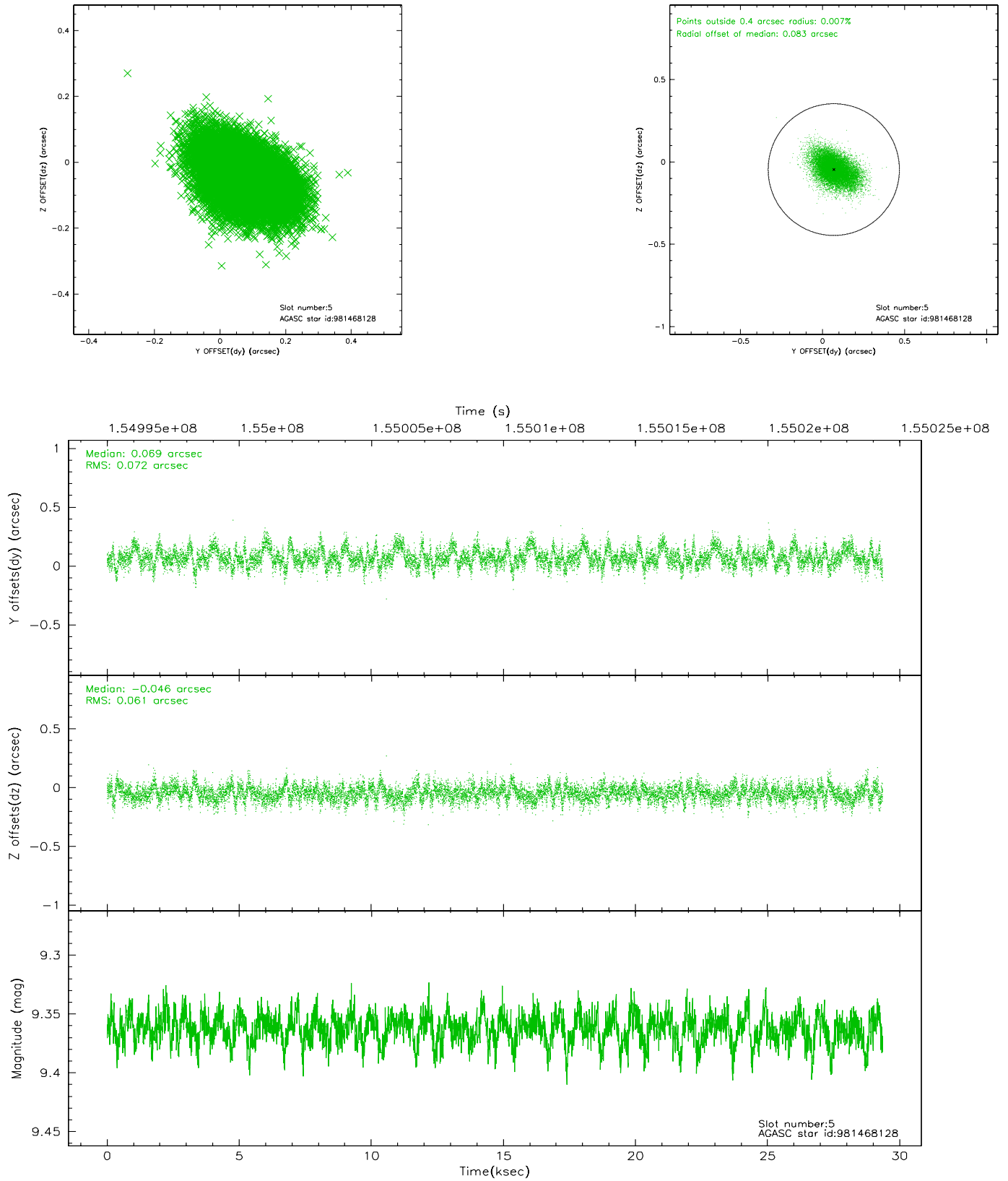
2.4.1 Slot 3



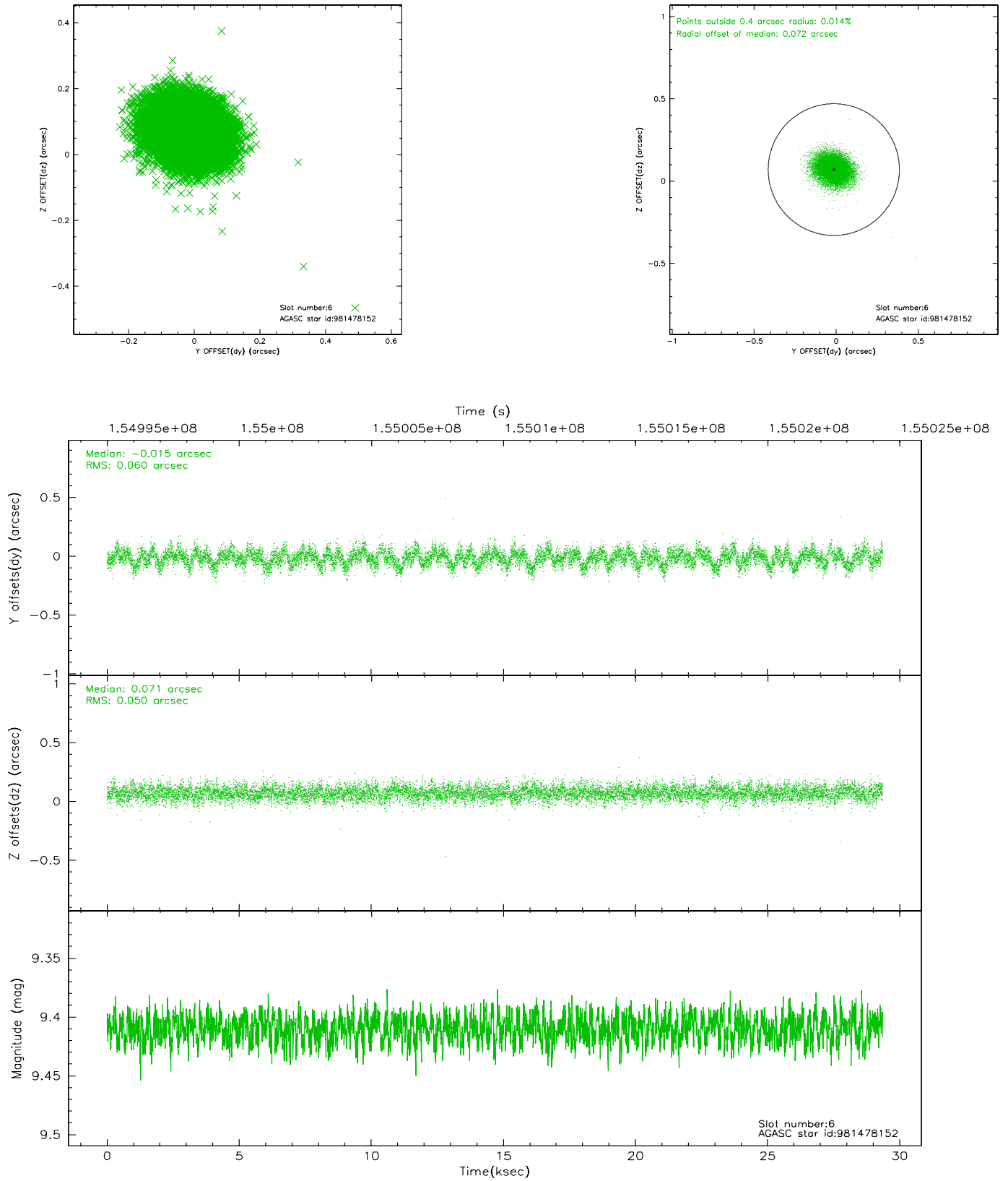
2.4.2 Slot 4



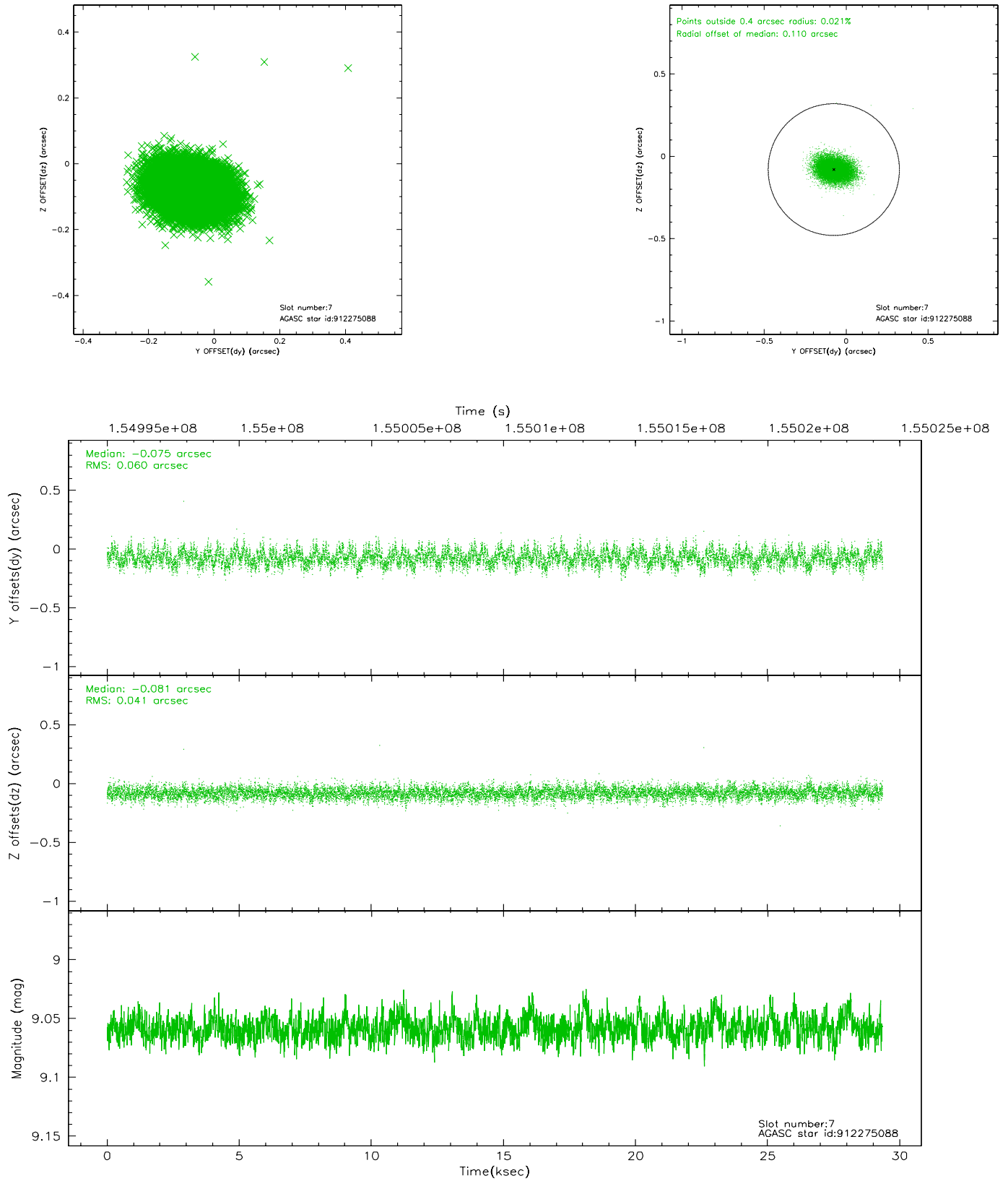
2.4.3 Slot 5



2.4.4 Slot 6

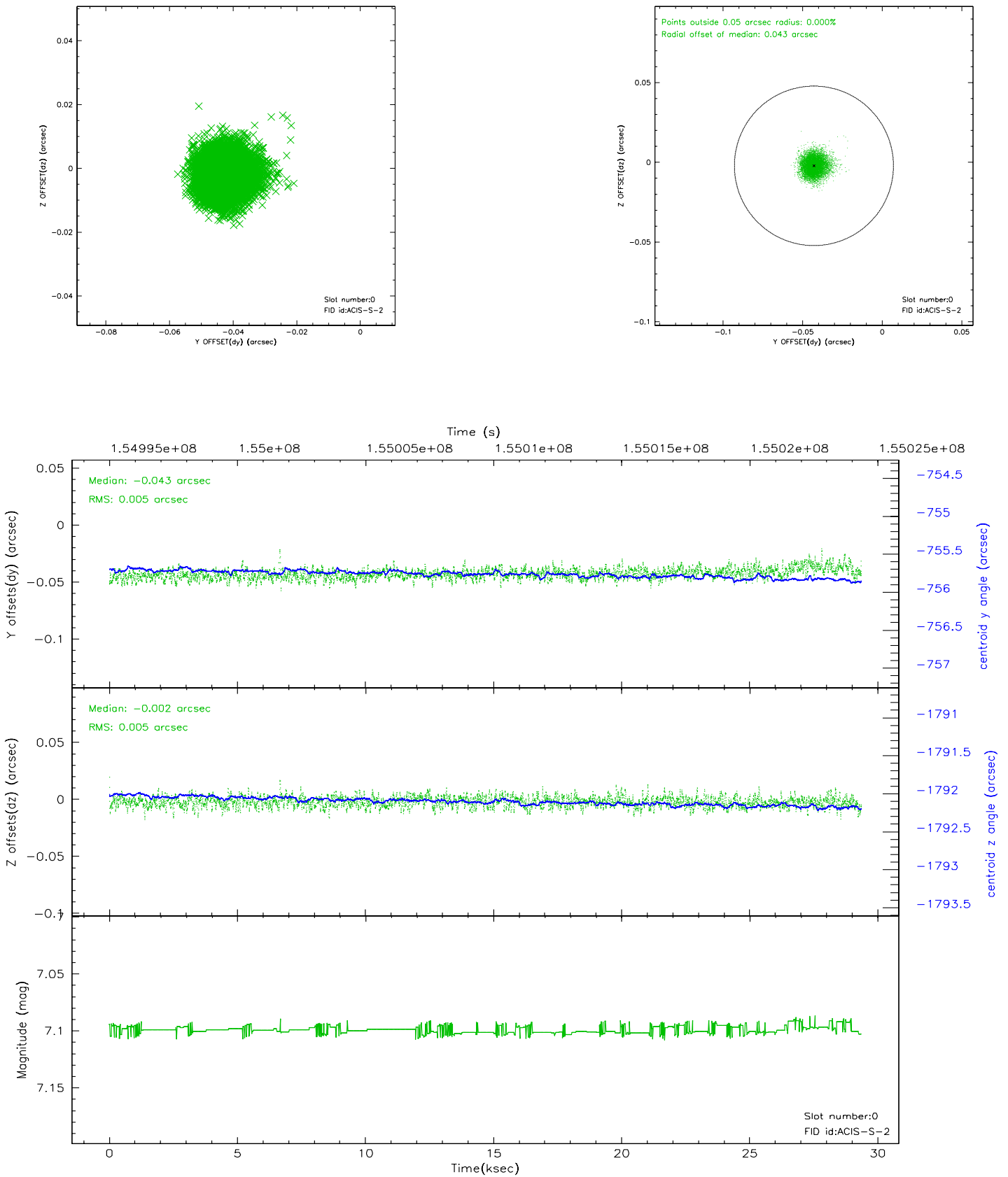


2.4.5 Slot 7

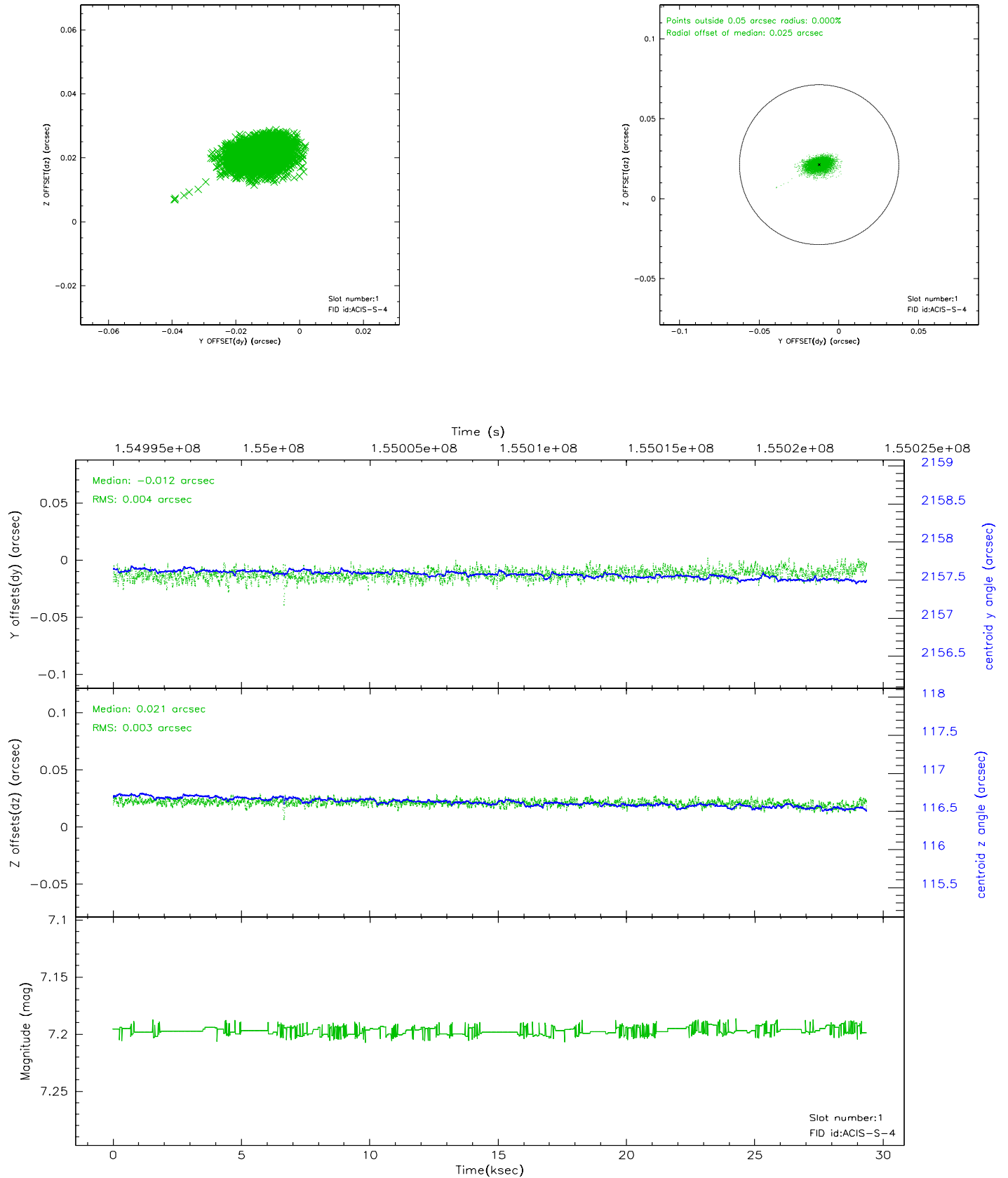


2.5 FID Slots

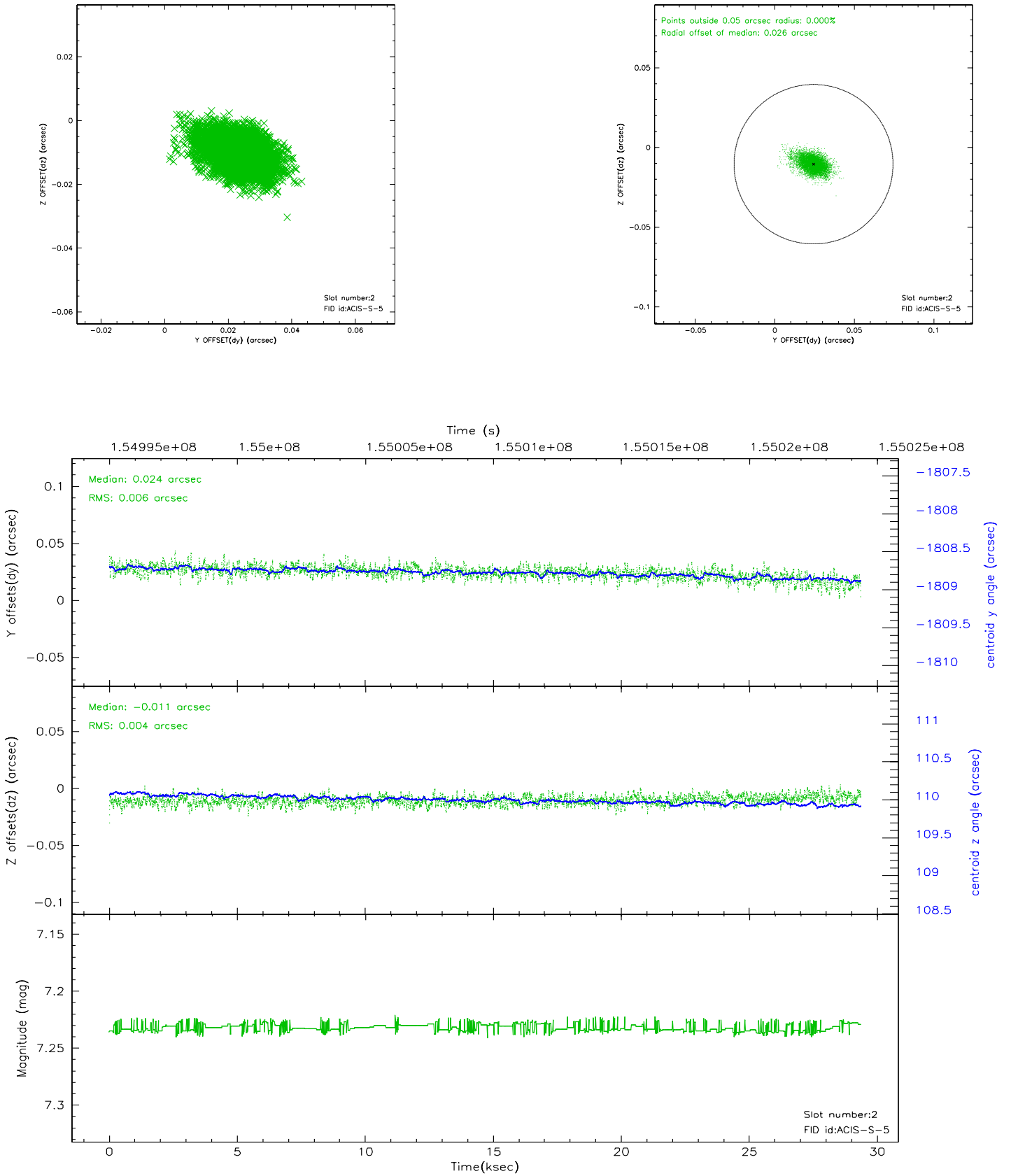
2.5.1 Slot 0



2.5.2 Slot 1

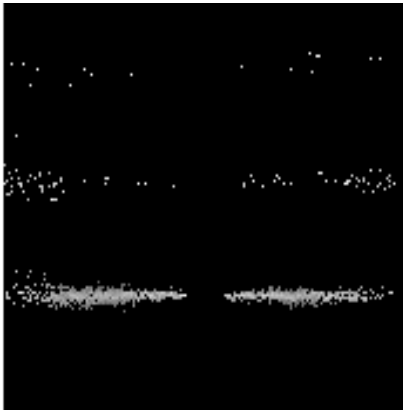


2.5.3 Slot 2

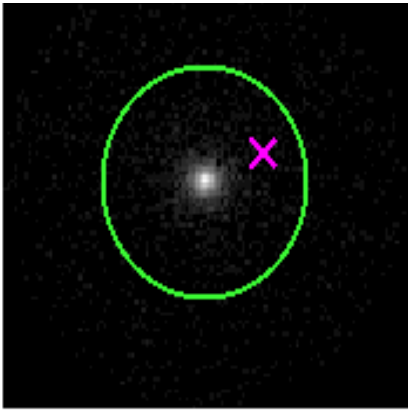


3 Gratings

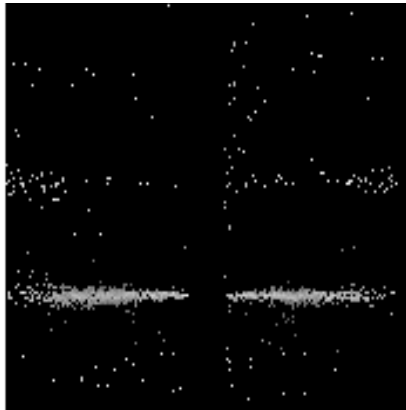
3.1 HEG Arm



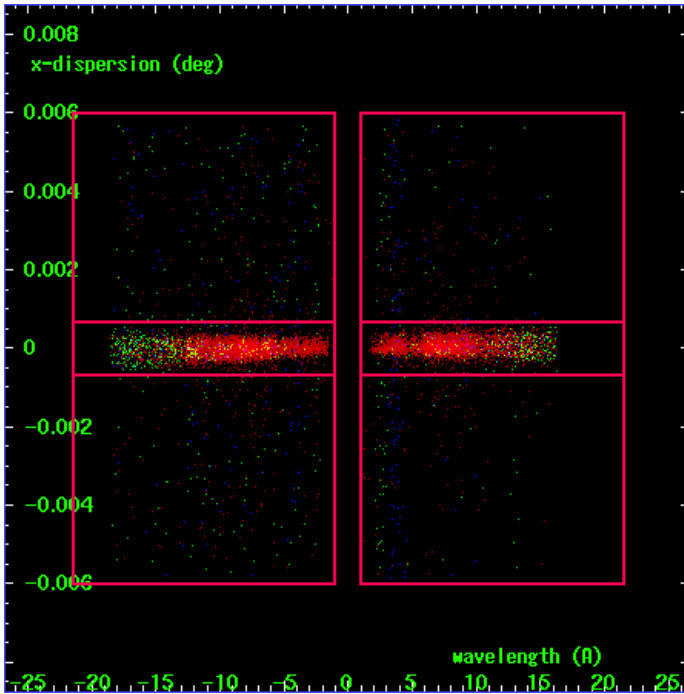
HEG Order Sort 123



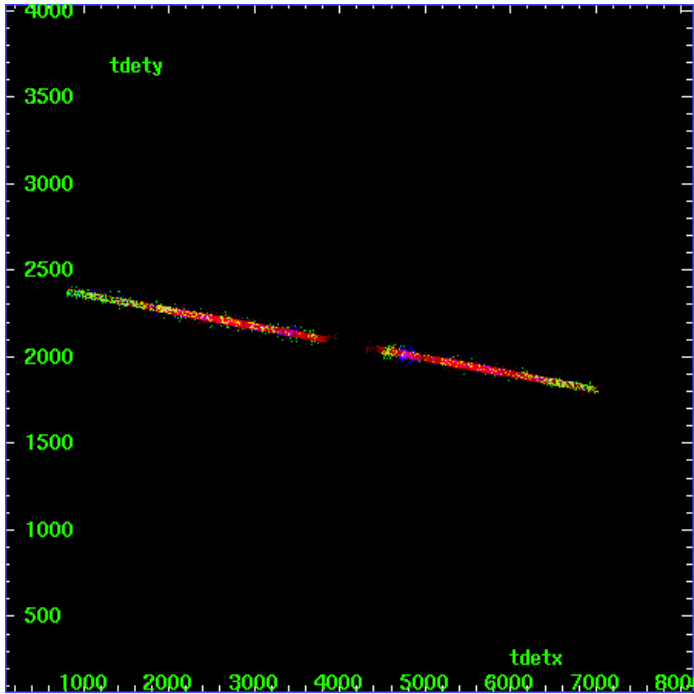
HEG Zero Order



HEG Order Sort ALL

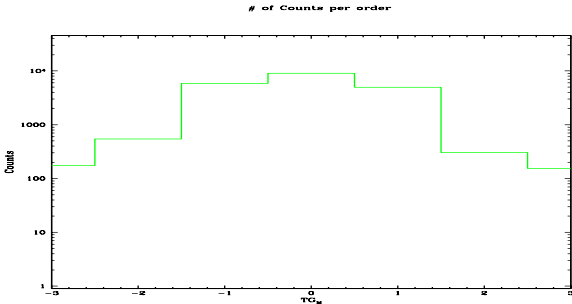


Spot Image HEG

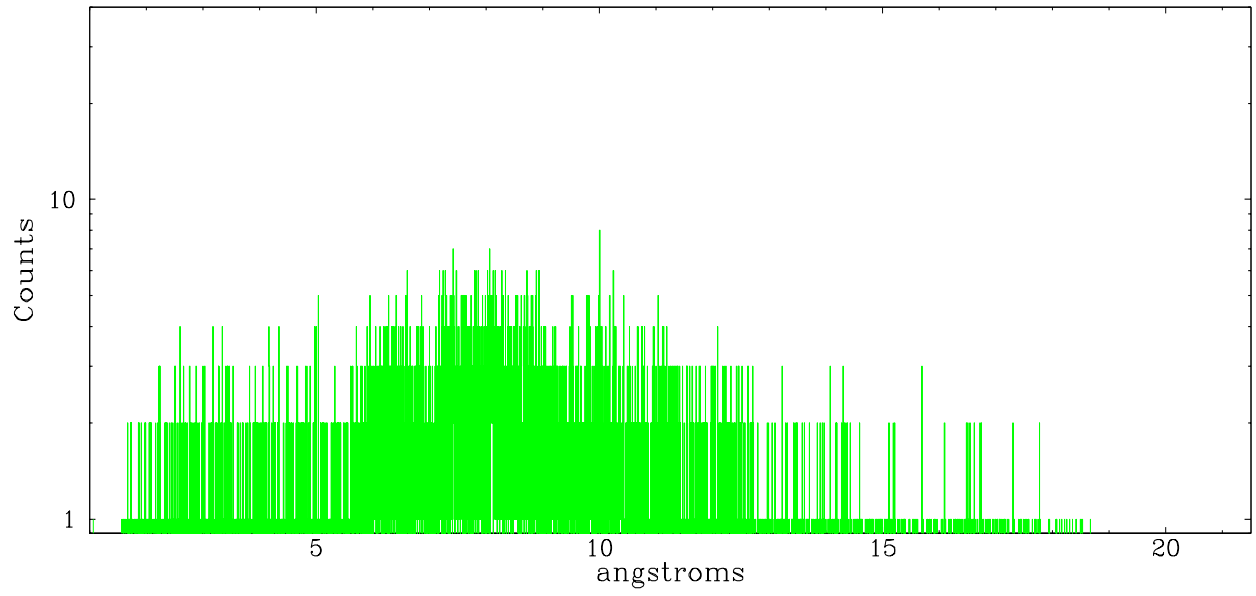


Full Detector HEG

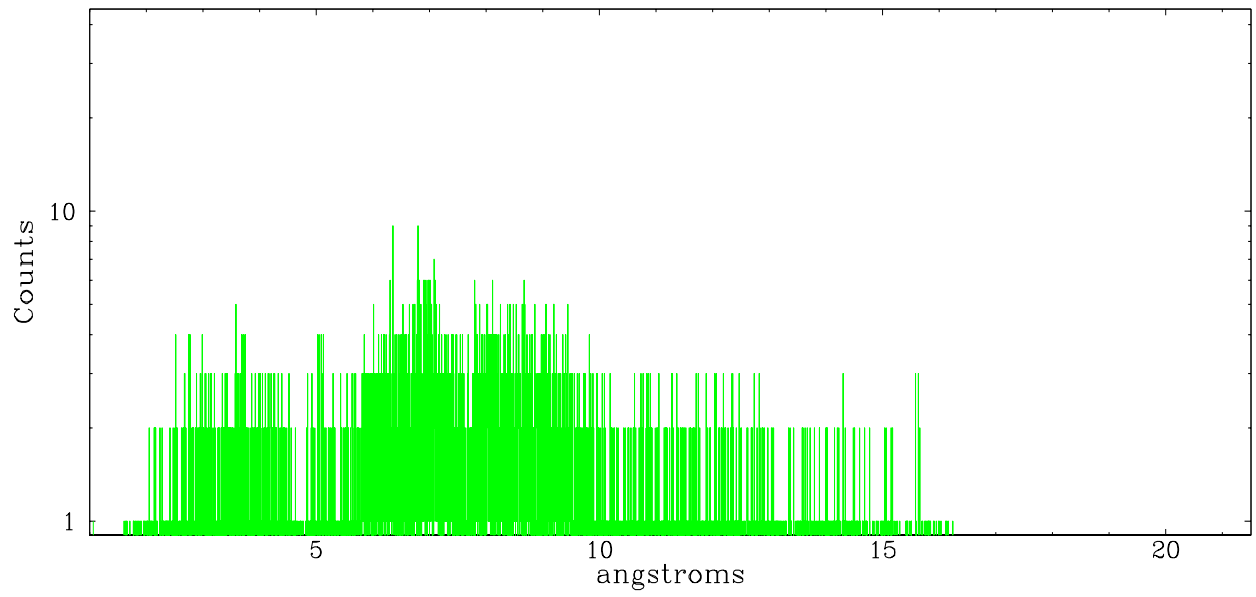
	order -3	order -2	order -1	order 0	order 1	order 2	order 3
Events	175	544	5868	9040	4962	304	154



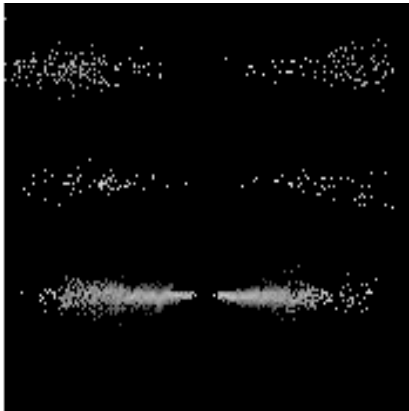
heg order -1



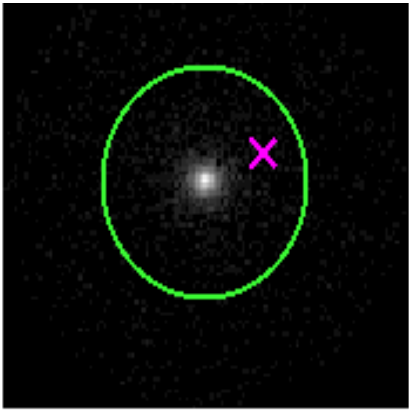
heg order +1



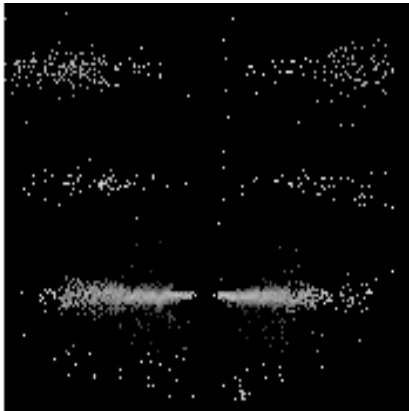
3.2 MEG Arm



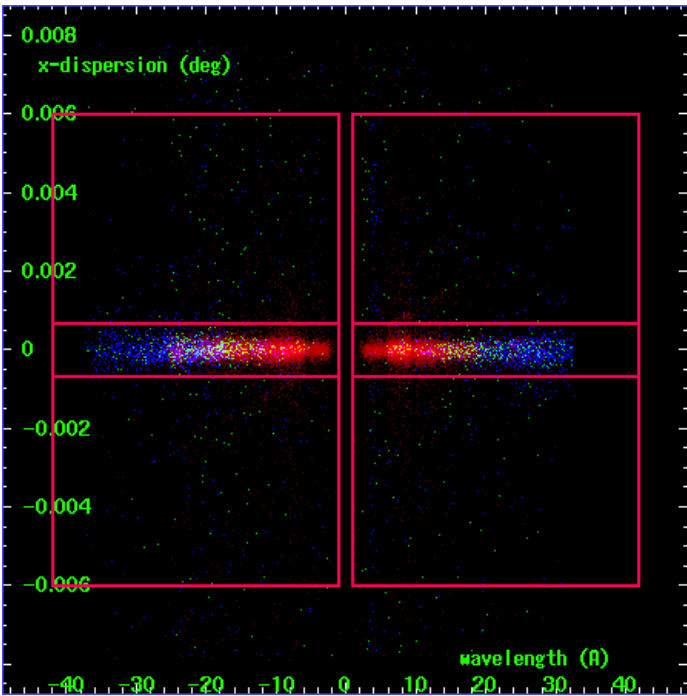
MEG Order Sort 123



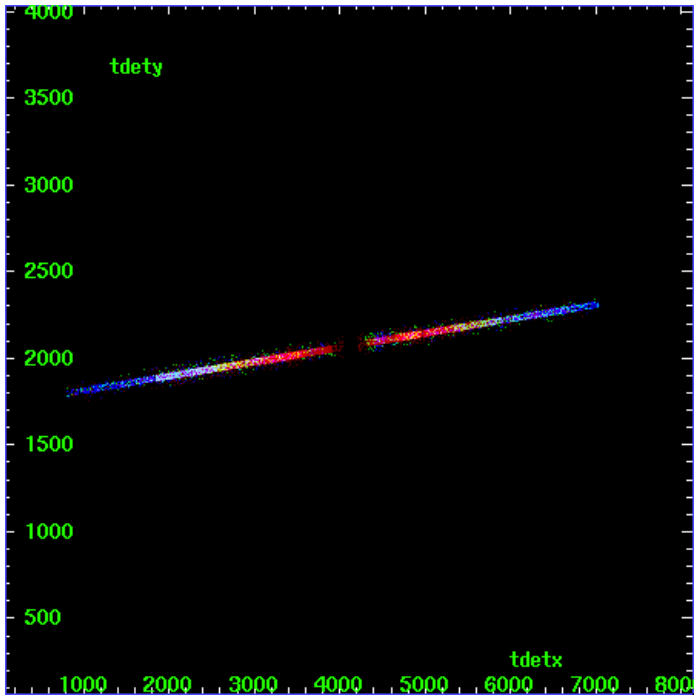
MEG Zero Order



MEG Order Sort ALL

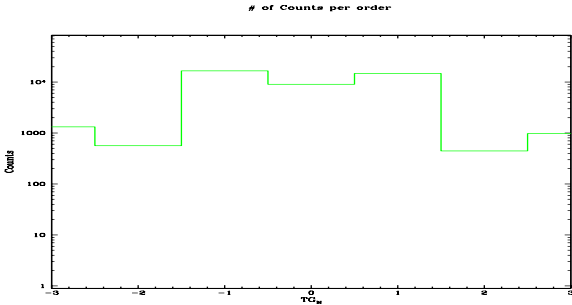


Spot Image MEG

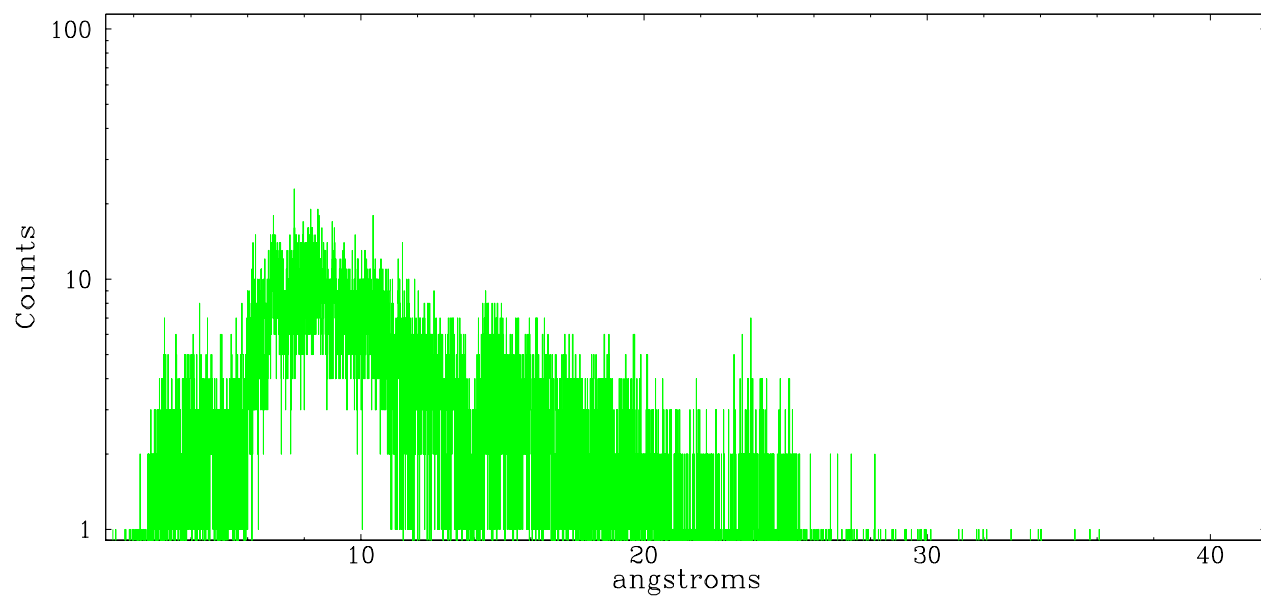


Full Detector MEG

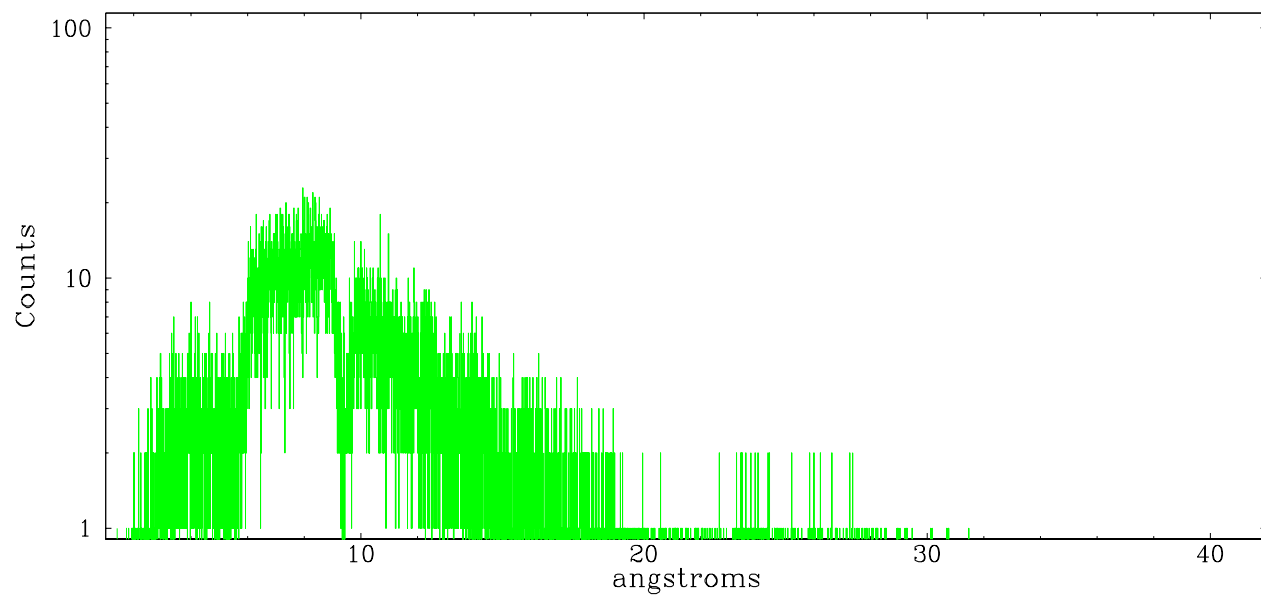
	order -3	order -2	order -1	order 0	order 1	order 2	order 3
Events	1320	561	16505	9040	14671	444	978



meg order -1



meg order +1



A Summary

A.1 Status

V&V Scientist	Joy Nichols
V&V Date (YYYY-MM-DD)	2006.10.17
V&V Edition	1
V&V Disposition and Status	OK
V&V Charge Time	28.162

A.2 Comments