

V&V Reference Report

L2 ASCDS Version : 8.4.5

Observation 366 - L2 Version 5
Chandra X-Ray Center

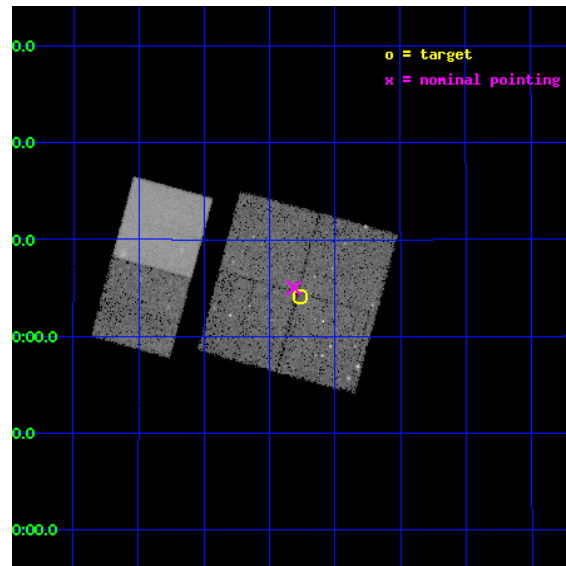
L2 Processing Date : Aug 24 2012

Contents

1	Front	2
2	OBI	3
2.1	OBI	3
2.1.1	Images	3
2.1.2	Parameters	4
2.1.3	Events	4
2.2	Compared Parameters	5
2.3	Aspect	6
2.4	Star Slots	9
2.4.1	Slot 3	9
2.4.2	Slot 4	10
2.4.3	Slot 5	11
2.4.4	Slot 6	12
2.4.5	Slot 7	13
2.5	FID Slots	14
2.5.1	Slot 0	14
2.5.2	Slot 1	15
2.5.3	Slot 2	16
A	Summary	17
A.1	Status	17
A.2	Comments	17

1 Front

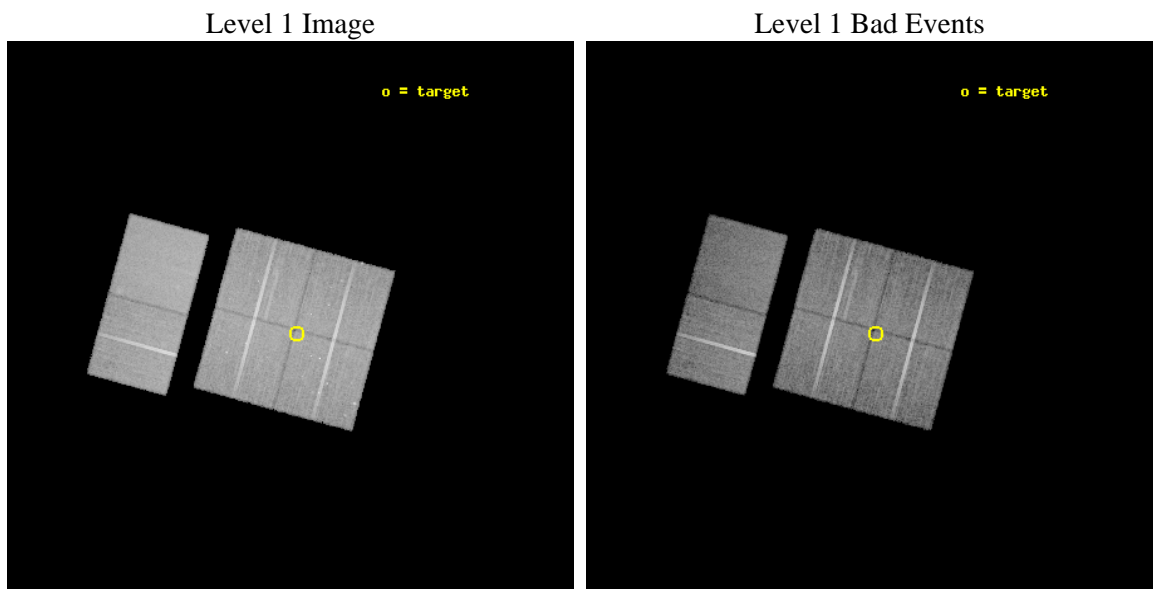
seq_num	200011	Sequence number
obs_id	366	Observation id
title	DEEP ACIS IMAGING OF THE CORE OF THE PLEIADES CLUSTER	Proposal tit
observer	Dr. Jeffrey Linsky	Principal investigator
object	PLEIADES	Source name
dtcycle	0	
cycle	P	events from which exps? Prim/Second/Both
ra_targ	56.691667	Observer's specified target RA [deg]
dec_targ	24.068333	Observer's specified target Dec [deg]
ra_nom	56.703771349828	Nominal RA [deg]
dec_nom	24.083738729723	Nominal Dec [deg]
roll_nom	285.3010967623	Nominal Roll [deg]
revision	5	Processing version of data
ontime	21487.730304986	Sum of GTIs [s]
livetime	21215.639725507	Livetime [s]
ontime0	21487.730304986	Sum of GTIs [s]
ontime1	21487.77134499	Sum of GTIs [s]
ontime2	21487.812384993	Sum of GTIs [s]
ontime3	21487.853424981	Sum of GTIs [s]
ontime6	21484.694514841	Sum of GTIs [s]
ontime7	21487.894464985	Sum of GTIs [s]
l2events	147118	Number of level 2 events



2 OBI

2.1 OBI

2.1.1 Images



2.1.2 Parameters

obi_num	2	Obi number	sched_exp_time	21750.000000	[s] Scheduled observation exposure time
ascdsver	8.4.5	Processing system revision	ontime	21487.730304986	Sum of GTIs [s]
caldsver	4.5.1.1	 	ontime0	21487.730304986	Sum of GTIs [s]
date	2012-08-24T14:04:07	Date and time of file creation	ontime1	21487.77134499	Sum of GTIs [s]
revision	5	Processing version of data	ontime2	21487.812384993	Sum of GTIs [s]
			ontime3	21487.853424981	Sum of GTIs [s]
			ontime6	21484.694514841	Sum of GTIs [s]
			ontime7	21487.894464985	Sum of GTIs [s]
			l1events	950099	Number of level 1 events

2.1.3 Events

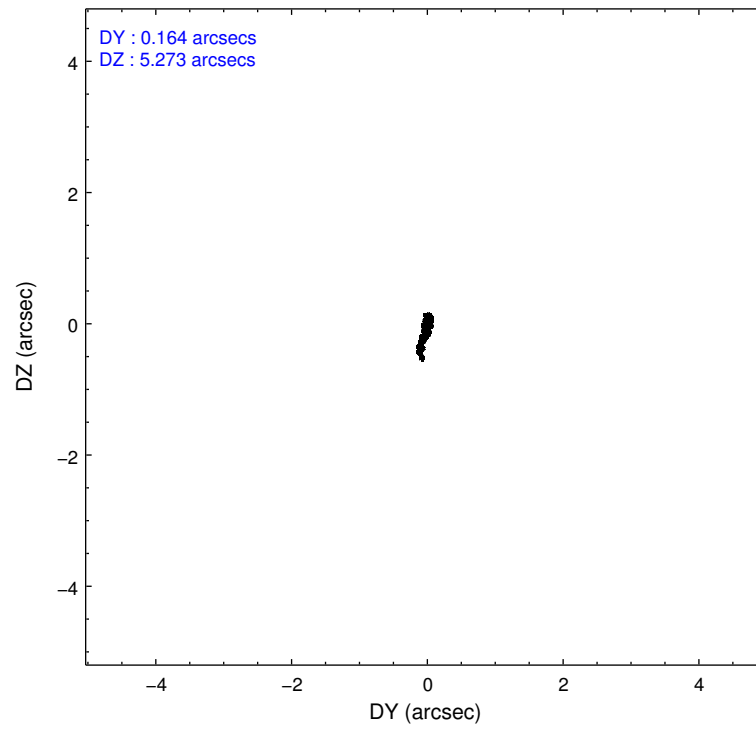
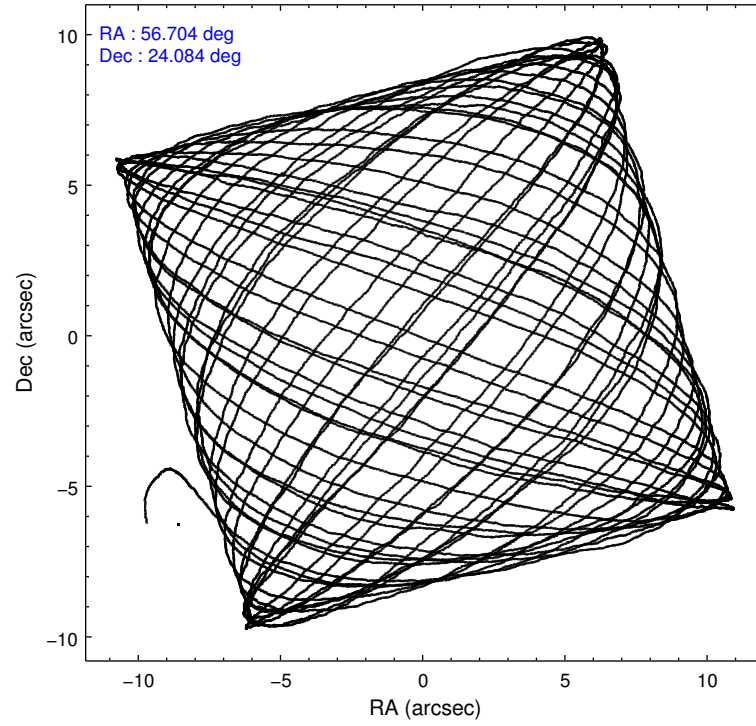
	ccd 0	ccd 1	ccd 2	ccd 3	ccd 6	ccd 7		ccd 0	ccd 1	ccd 2	ccd 3	ccd 6	ccd 7
level 1 events	146509	144437	158137	157529	161267	182220	grade 0 events	9012	7267	6618	6345	5568	5096
rejected events	126487	125987	141151	140805	144560	108538		6%	5%	4%	4%	3%	2%
rejected %	86%	87%	89%	89%	89%	59%	grade 1 events	96	46	54	58	63	125
								0%	0%	0%	0%	0%	0%
							grade 2 events	4659	4217	4379	4213	4561	17693
								3%	2%	2%	2%	2%	9%
							grade 3 events	1692	1753	1410	1514	1454	4201
								1%	1%	0%	0%	0%	2%
							grade 4 events	1573	1843	1422	1453	1450	4093
								1%	1%	0%	0%	0%	2%
							grade 5 events	4327	4655	4133	4629	5091	12326
								2%	3%	2%	2%	3%	6%
							grade 6 events	3089	3370	3159	3201	3682	42605
								2%	2%	1%	2%	2%	23%
							grade 7 events	122061	121286	136962	136116	139398	96081
								83%	83%	86%	86%	86%	52%

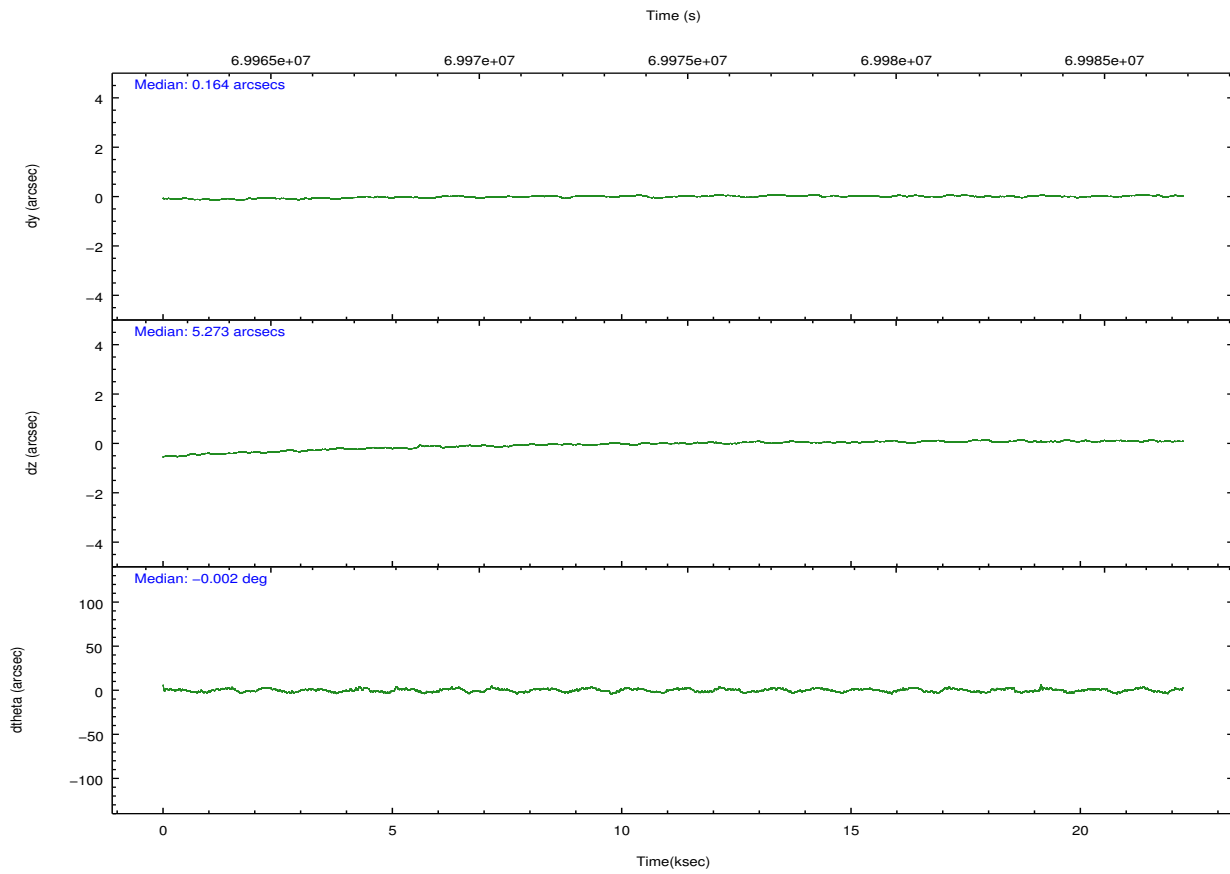
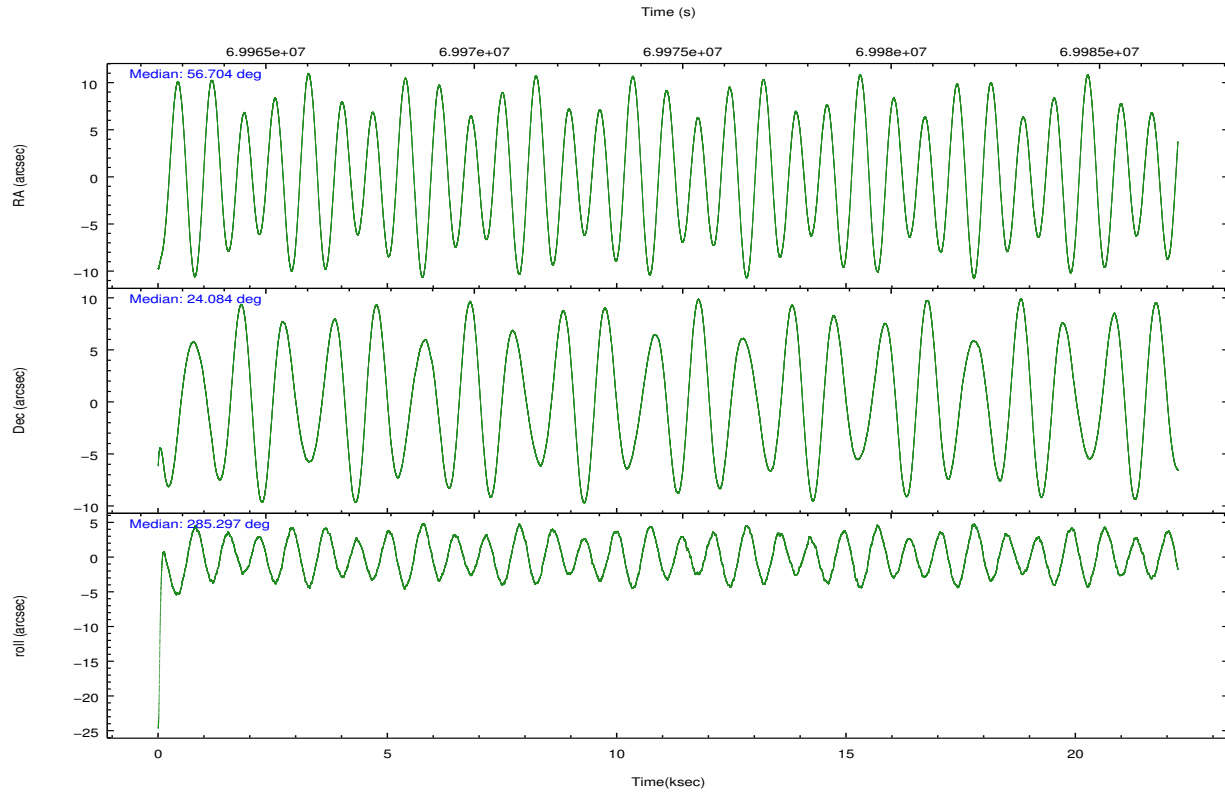
2.2 Compared Parameters

Parameter	Planned	Actual
Instrument	ACIS	ACIS
Detector	ACIS-012367	ACIS-012367
Grating	NONE	NONE
Data mode	GRADED	GRADED
Observation mode	POINTING	POINTING
[deg] Pointing RA	56.682458	56.70377134982823
[deg] Pointing Dec	24.103352	24.08373872972298
[deg] Pointing Roll	285.101126	285.301096762295
[mm] SIM focus pos	-0.782348	-0.7809083437167272
[mm] SIM defocus	0	0.001439871863259334
[mm] SIM translation stage pos	-233.592463	-233.5874344608287
[mm] SIM translation stage offset	0	-0.005018542100998502
[s] Observation start time (MET)	69964016.184000	69963016.32778899
Observation start date	2000-03-20T18:25:52	2000-03-20T18:10:16
[s] Observation end time (MET)	69985766.184000	69986567.24115001
Observation end date	2000-03-21T00:28:22	2000-03-21T00:42:47
Read mode	TIMED	TIMED

Parameter	Planned	Actual
Obspar format version number	7	7
Obspar file type	PREDICTED	ACTUAL
Obspar update status	NONE	UPDATED
Number of optional ACIS chips dropped	0	0
On-chip summing requested	N	N
Subarray requested	NONE	NONE
Alternating exposures requested	N	N
[s] Primary exposure time	0.000000	3.2

2.3 Aspect



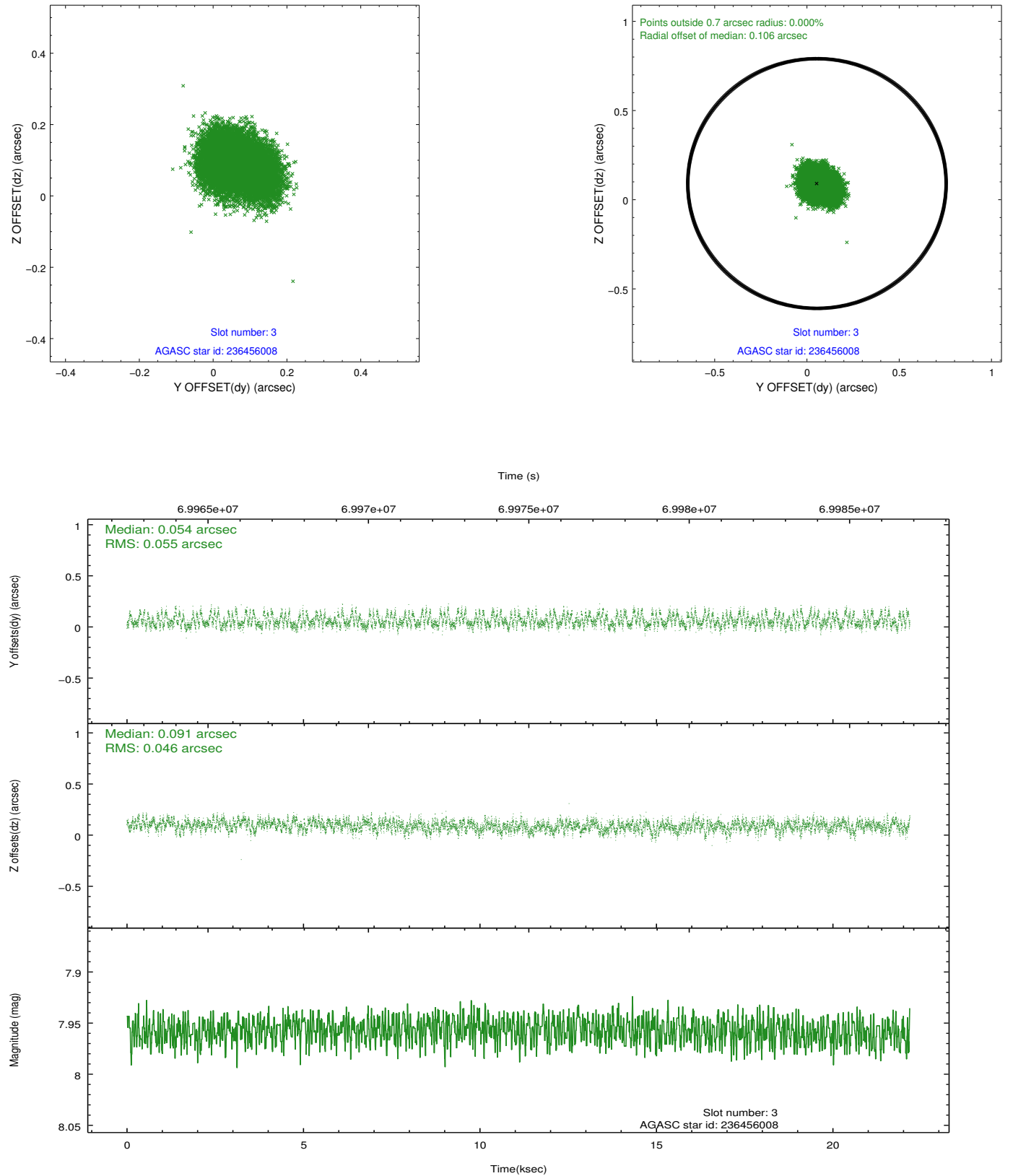


Slot Statistics

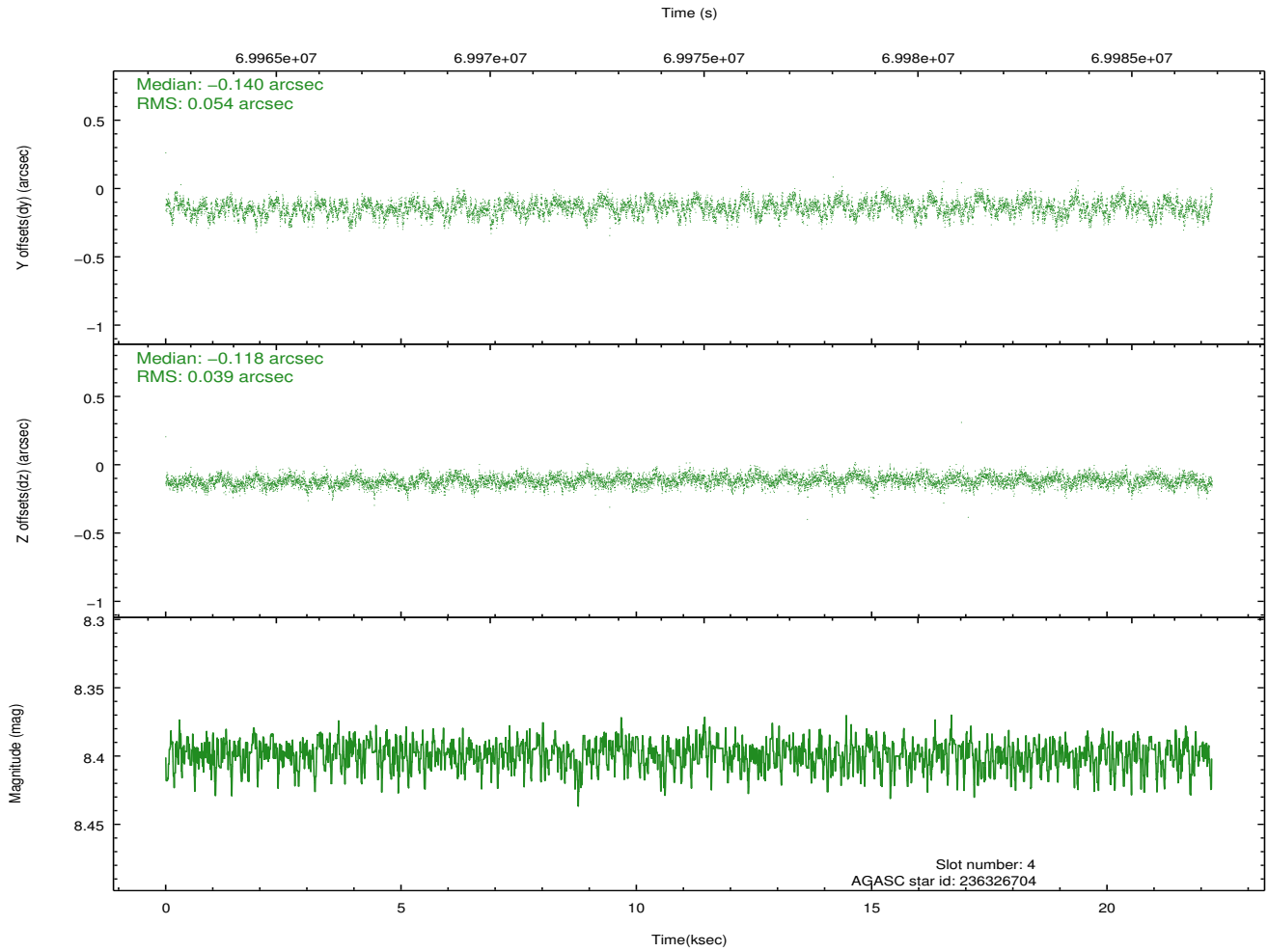
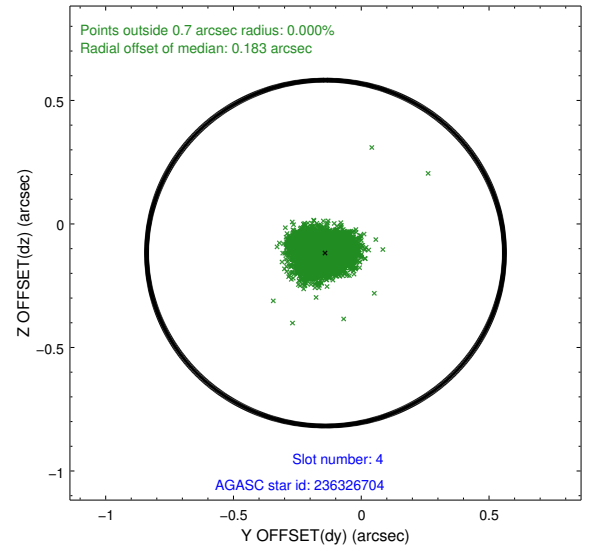
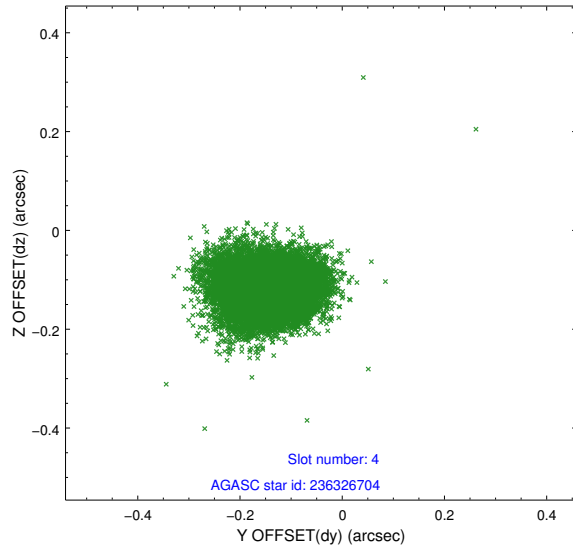
slot	status	id	mag	n_pts	med_dy	med_dz	dr1	dr2	ra	dec	mean_y	mean_z
0	FID	ACIS-I-2	7.14	5423	-0.038	-0.086	0.046	0.069	0.000000	0.000000	-754.49	-835.01
1	FID	ACIS-I-4	7.19	5422	-0.013	0.054	0.022	0.041	0.000000	0.000000	2159.52	1071.24
2	FID	ACIS-I-5	7.23	5422	-0.053	0.104	0.040	0.060	0.000000	0.000000	-1808.14	1069.30
3	GUIDE	236456008	7.96	10820	0.054	0.091	0.077	0.121	57.320013	24.396132	-478.45	2293.46
4	GUIDE	236326704	8.40	10846	-0.140	-0.118	0.071	0.115	56.001117	24.556994	-2163.99	-1727.67
5	GUIDE	235799112	8.54	10840	-0.138	-0.111	0.101	0.157	55.930186	24.374581	-1592.68	-2126.41
6	GUIDE	235943432	8.52	10845	0.211	-0.025	0.066	0.106	56.925322	23.543837	2152.21	248.73
7	GUIDE	235946440	7.94	10844	0.004	0.166	0.054	0.087	57.190993	23.525513	2442.24	1079.38

2.4 Star Slots

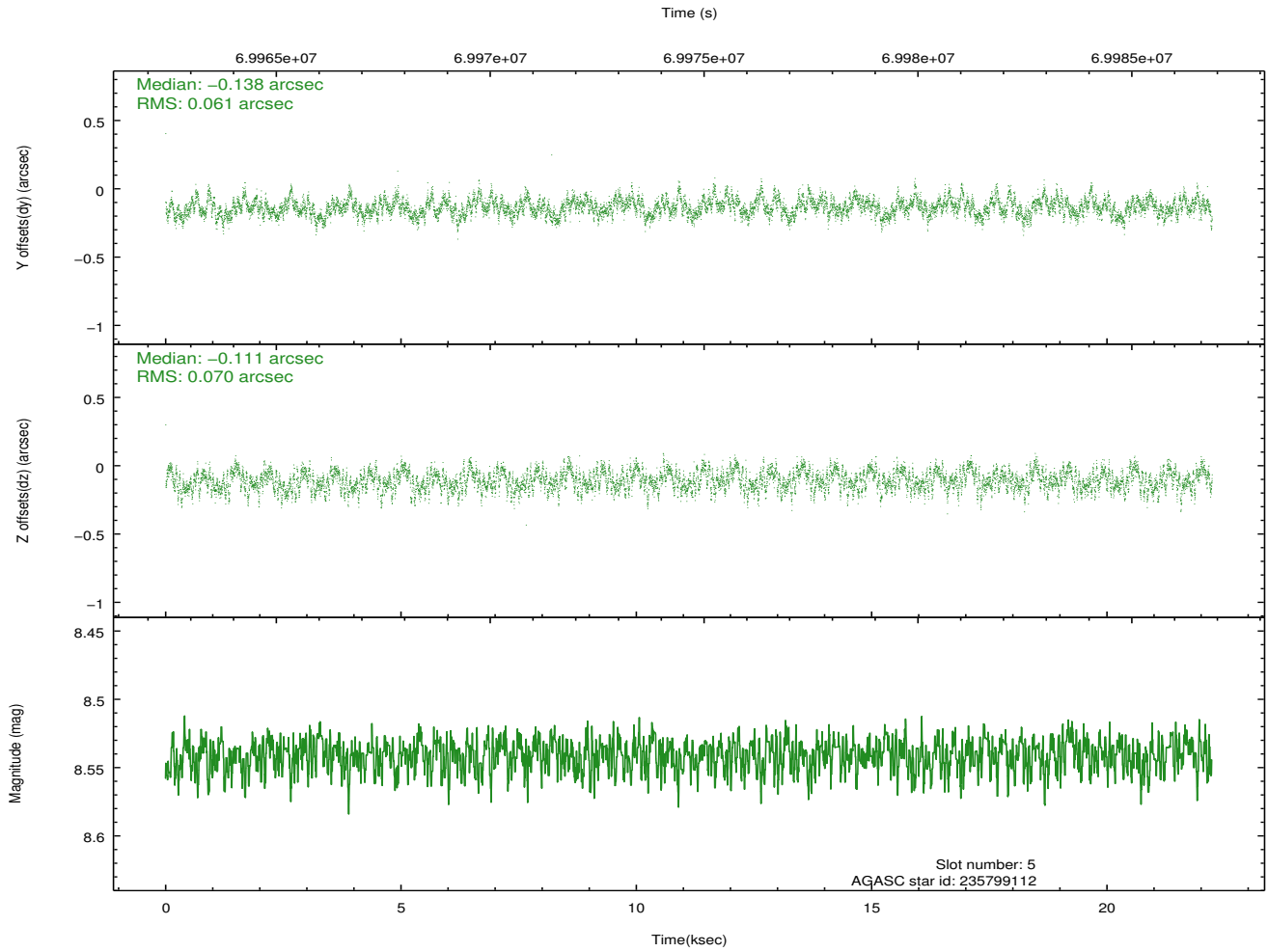
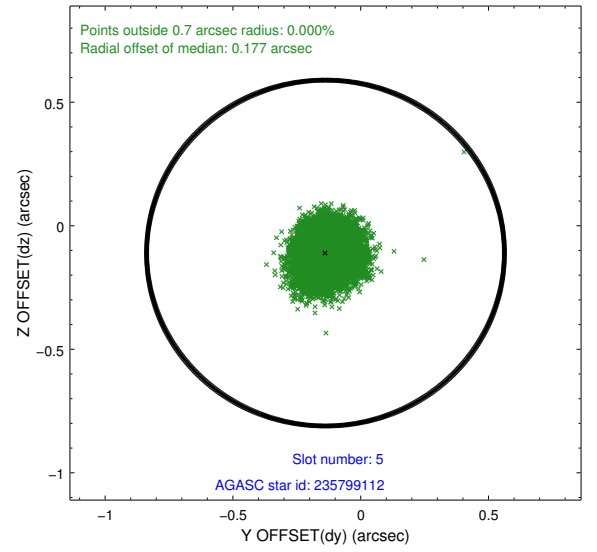
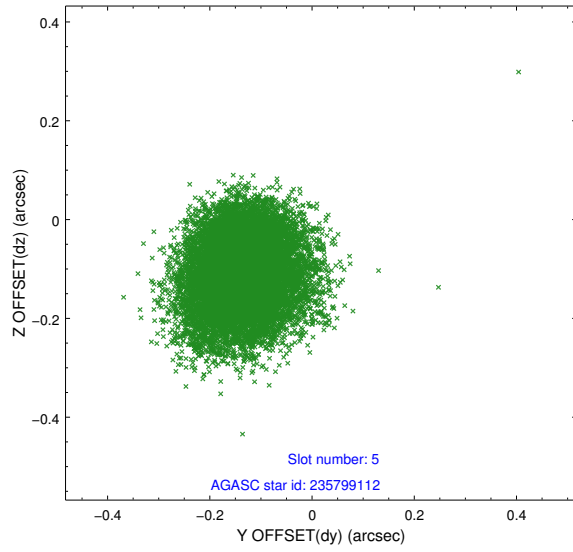
2.4.1 Slot 3



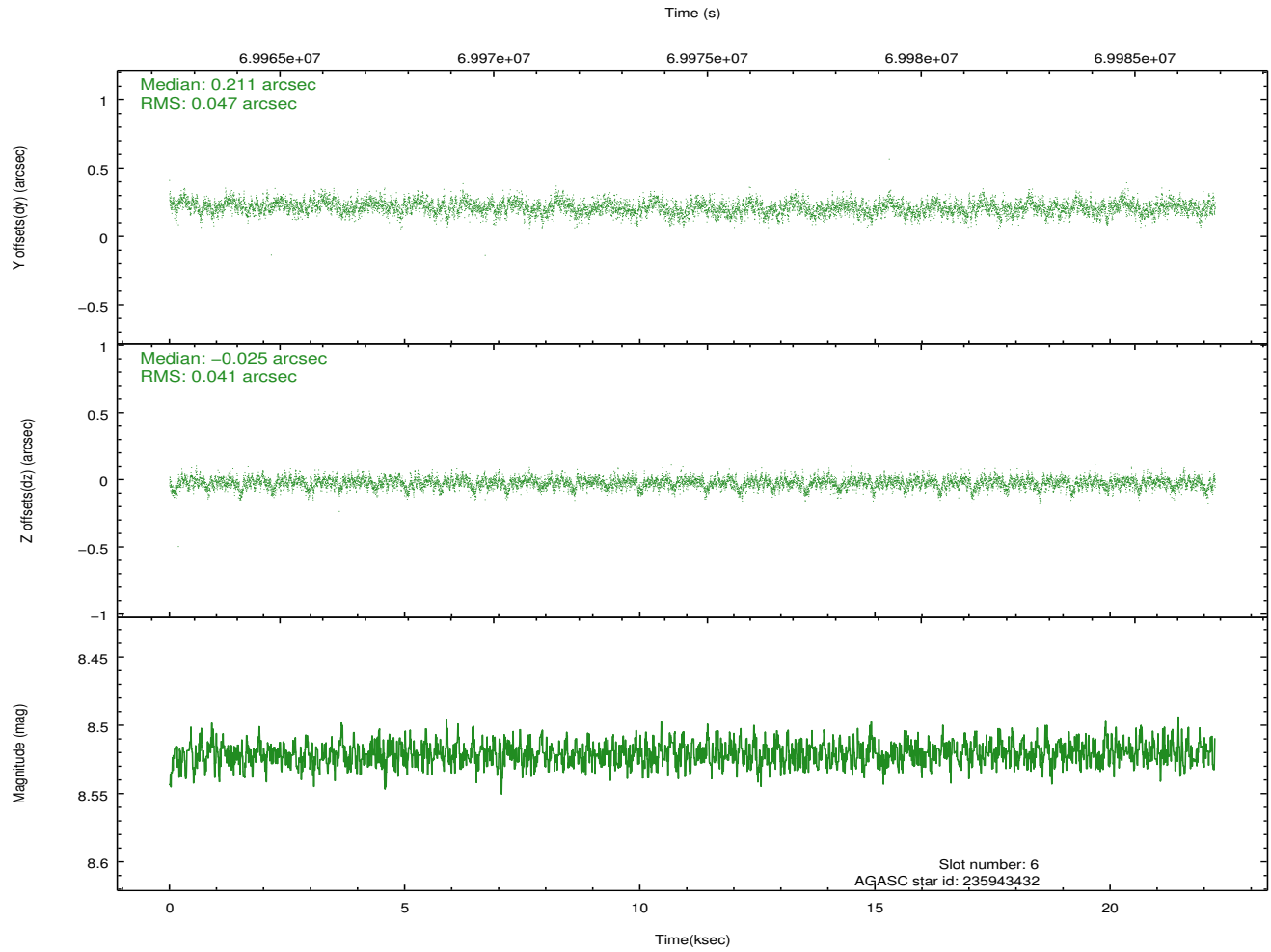
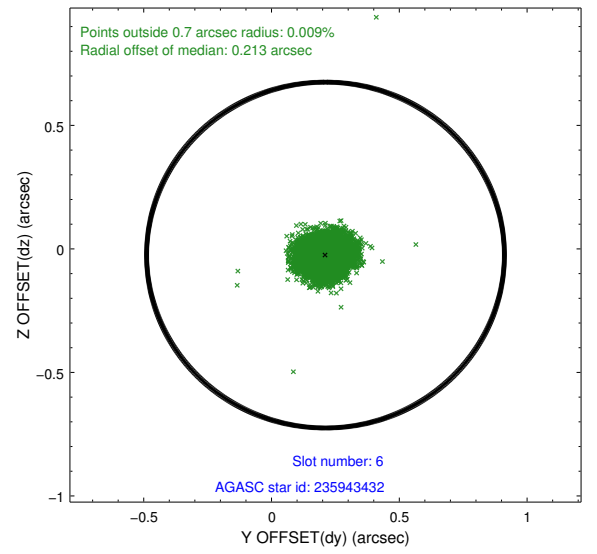
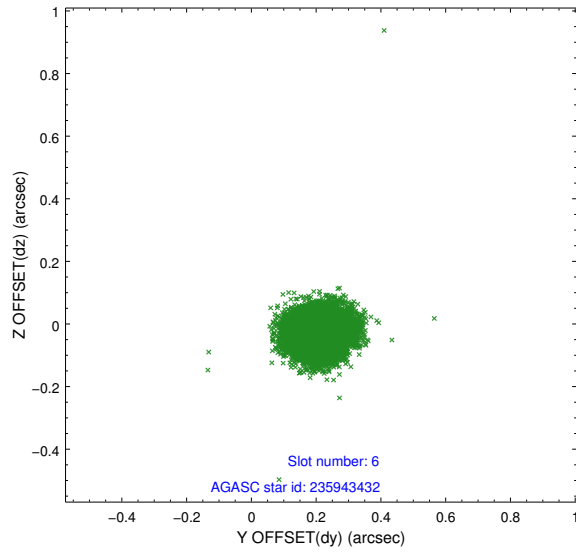
2.4.2 Slot 4



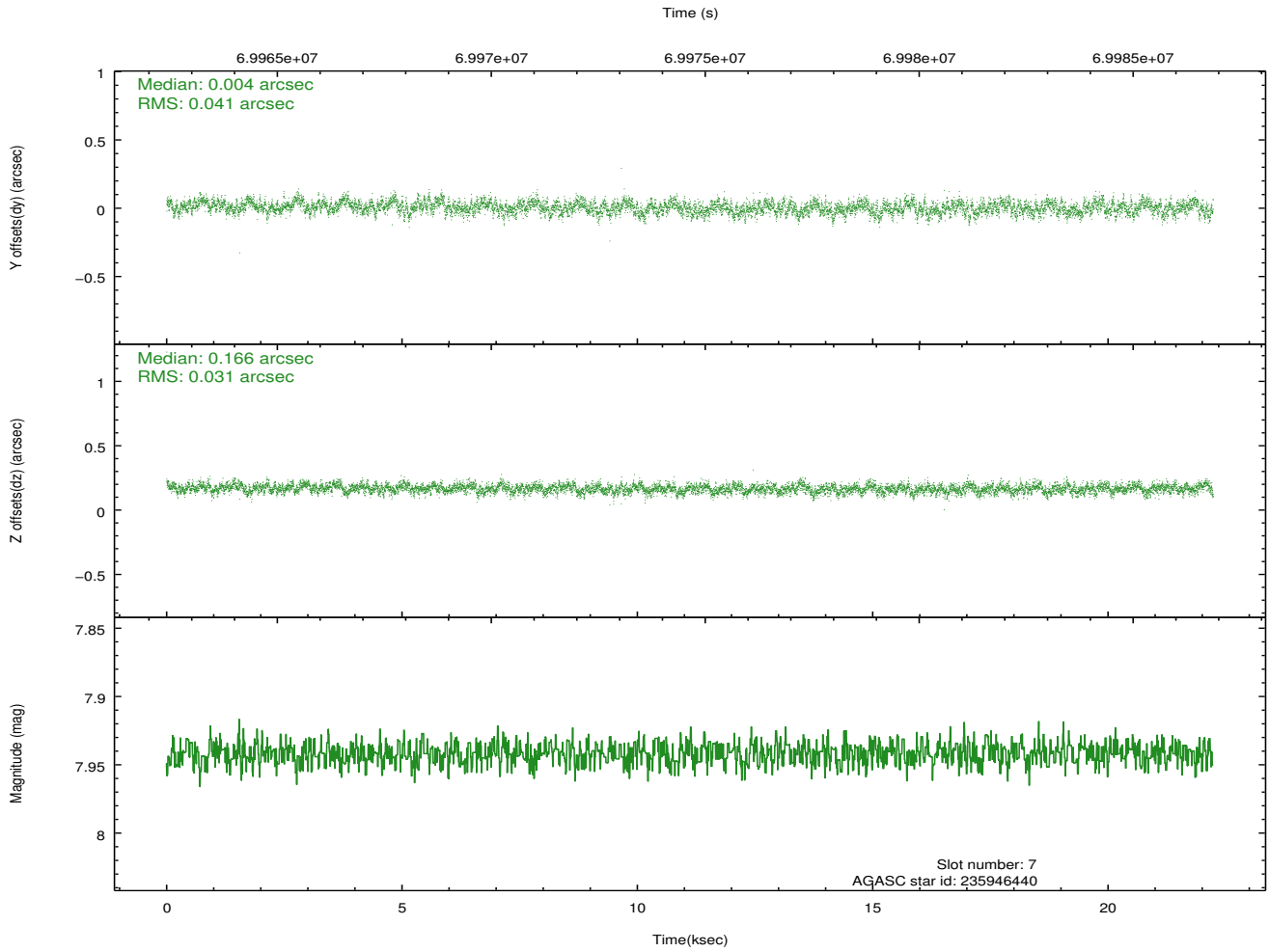
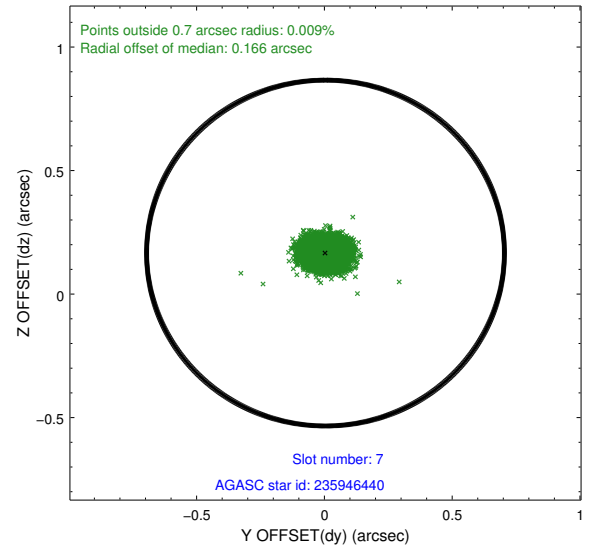
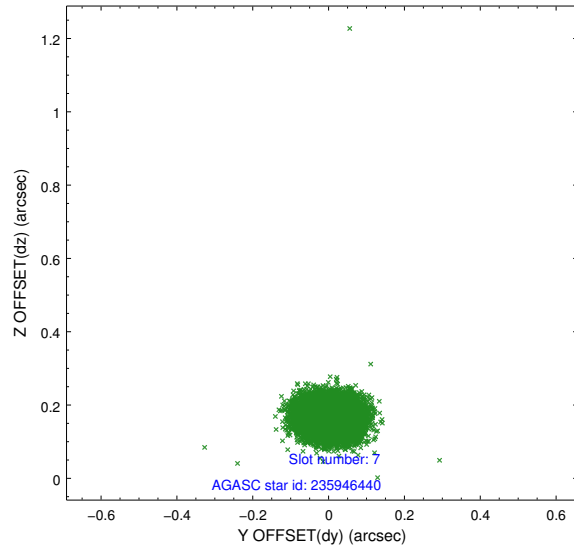
2.4.3 Slot 5



2.4.4 Slot 6

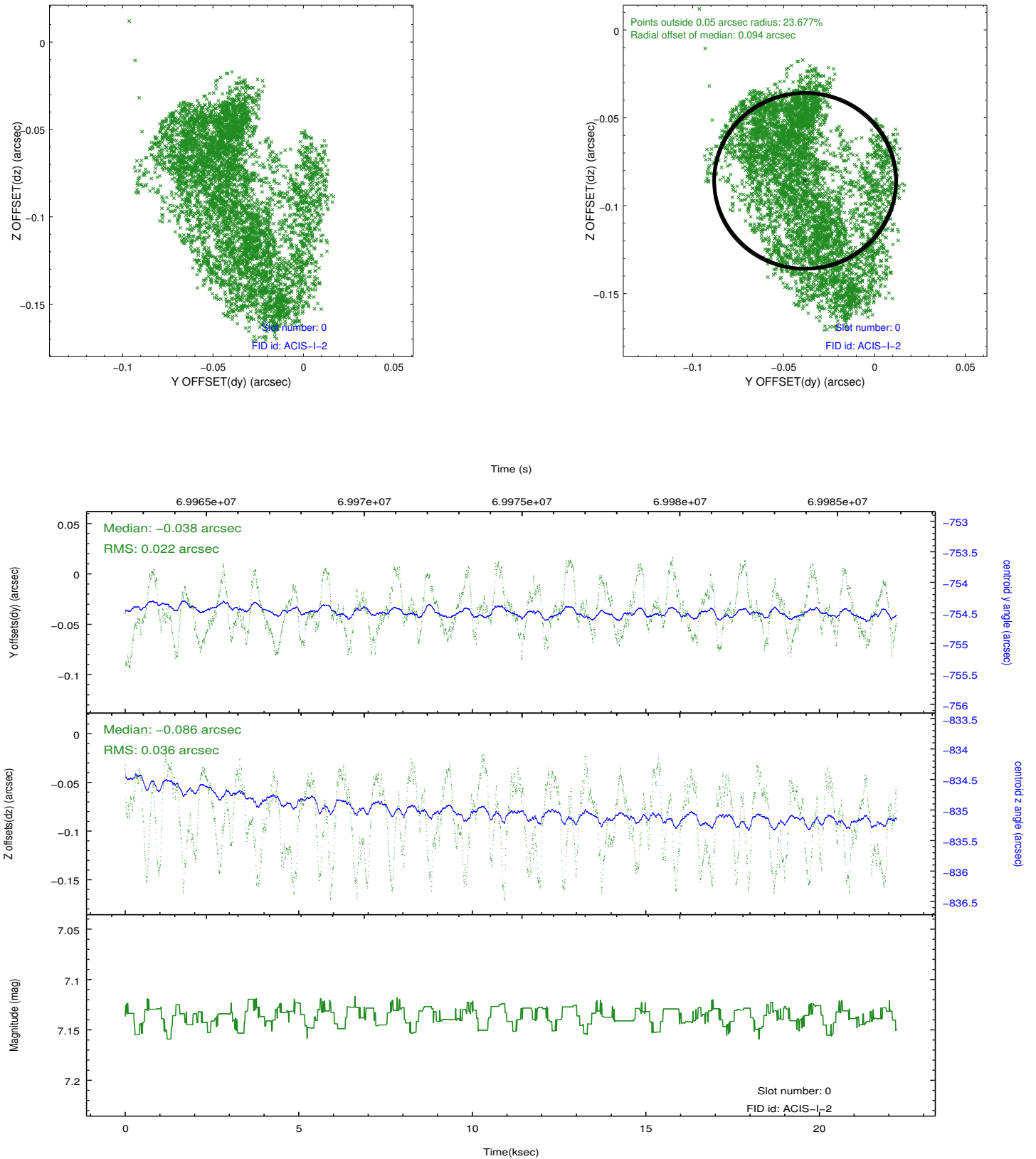


2.4.5 Slot 7

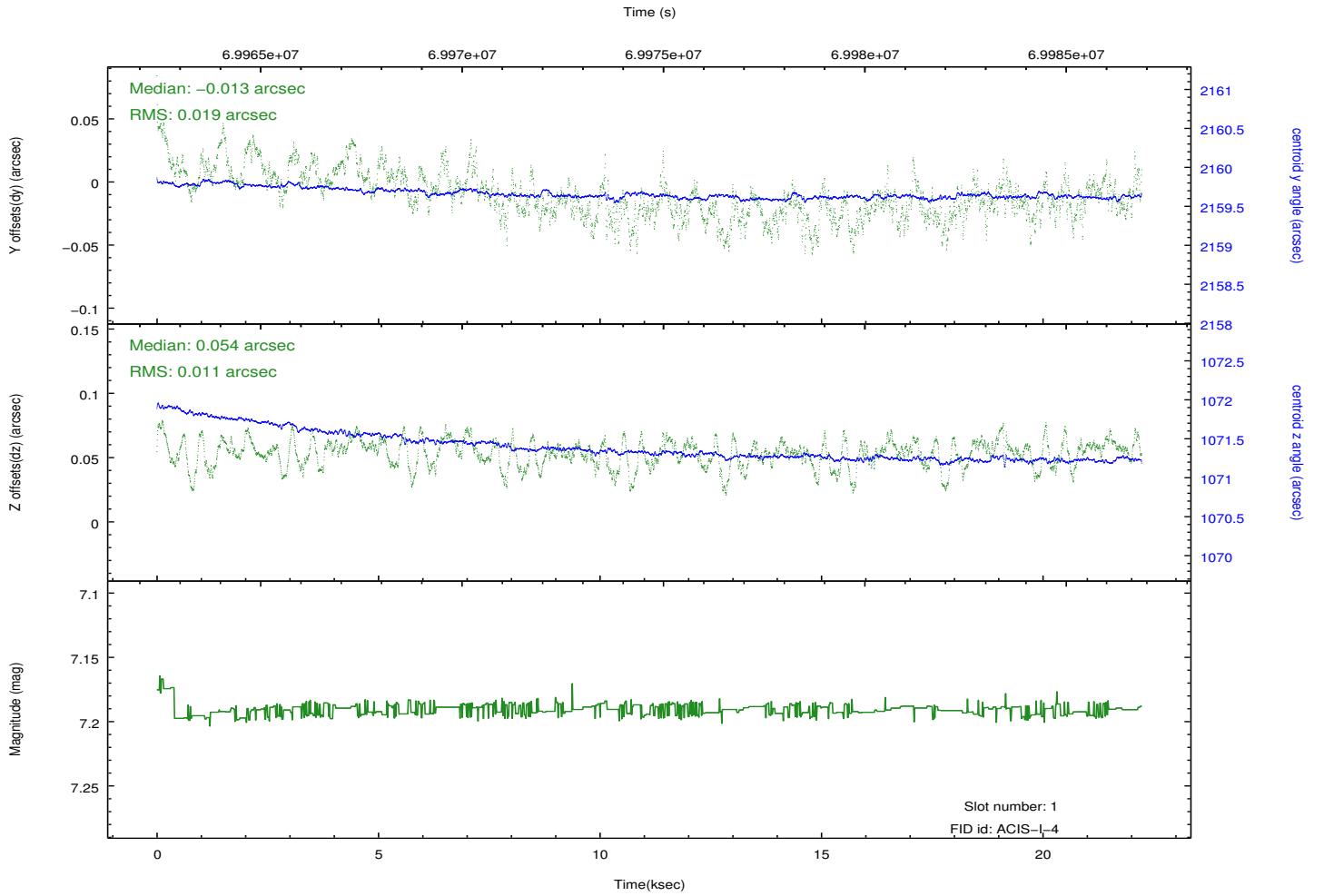
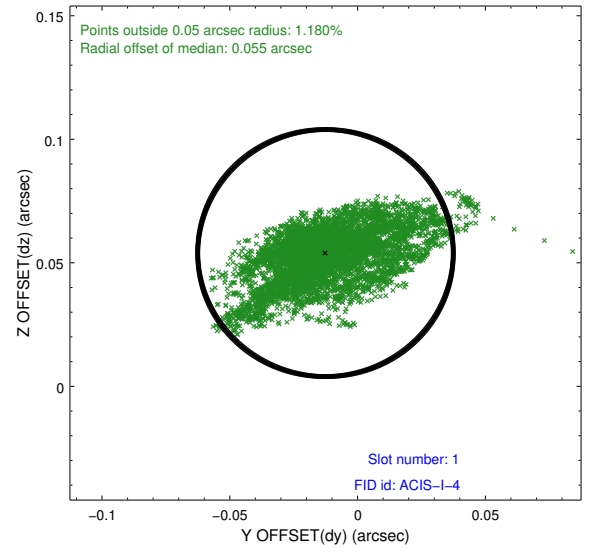
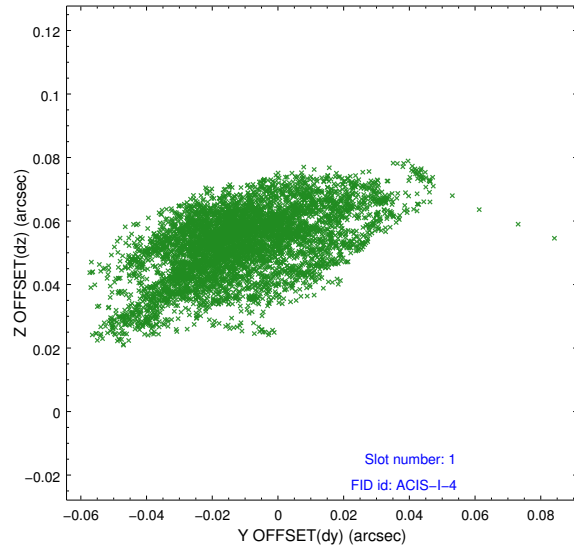


2.5 FID Slots

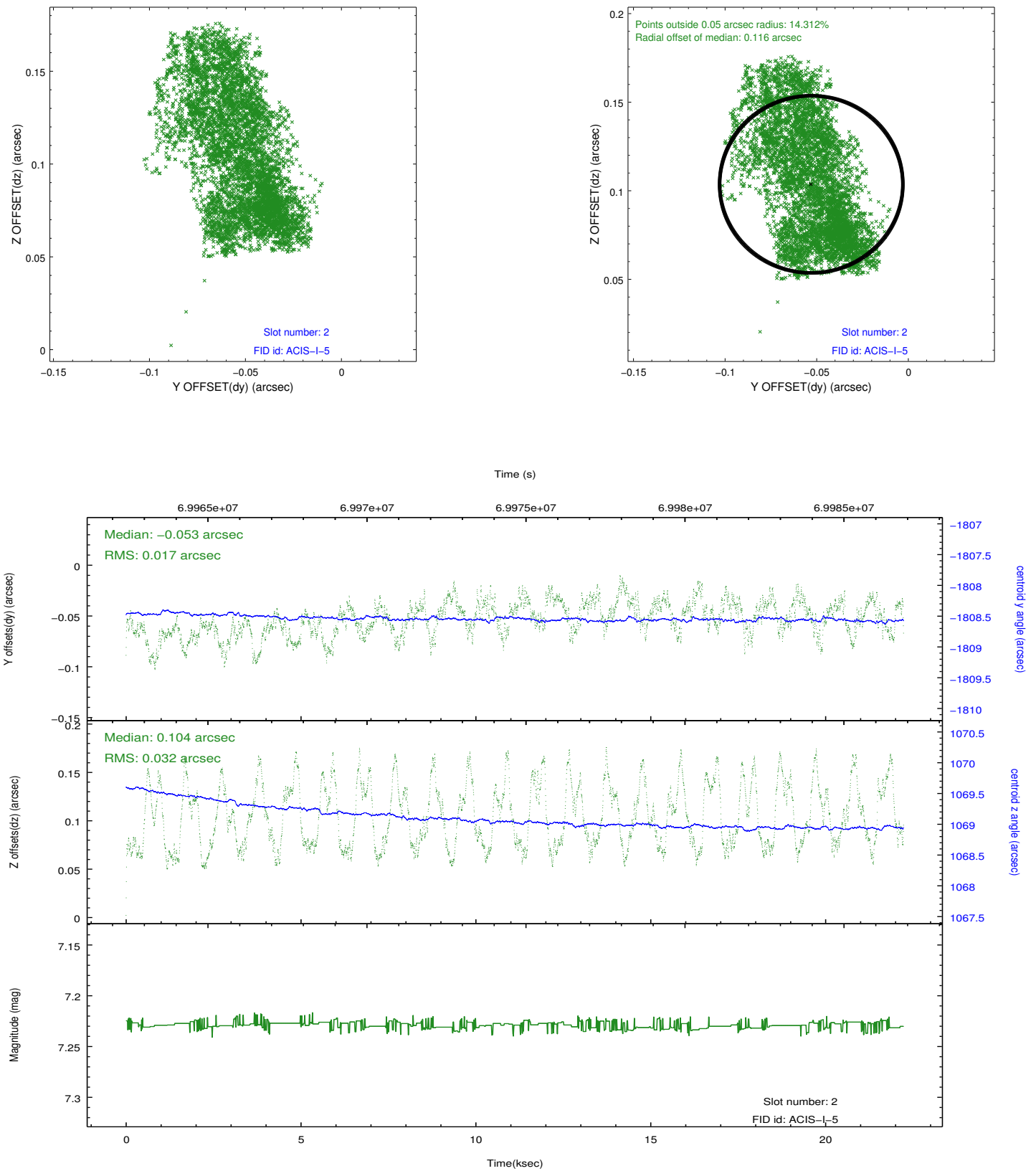
2.5.1 Slot 0



2.5.2 Slot 1



2.5.3 Slot 2



A Summary

A.1 Status

V&V Scientist	Jen Lauer
V&V Date (YYYY-MM-DD)	2012.08.27
V&V Edition	1
V&V Disposition and Status	OK
V&V Charge Time	21.488

A.2 Comments