

V&V Reference Report

L2 ASCDS Version : 8.4.5

Observation 3636 - L2 Version 3
Chandra X-Ray Center

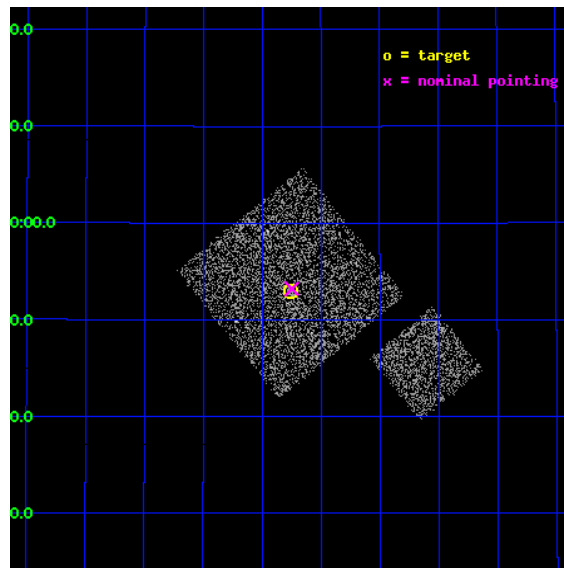
L2 Processing Date : Oct 24 2012

Contents

1	Front	2
2	OBI	3
2.1	OBI	3
2.1.1	Images	3
2.1.2	Bias	3
2.1.3	Parameters	4
2.1.4	Events	4
2.2	Compared Parameters	5
2.3	Aspect	6
2.4	Star Slots	9
2.4.1	Slot 3	9
2.4.2	Slot 4	10
2.4.3	Slot 5	11
2.4.4	Slot 6	12
2.4.5	Slot 7	13
2.5	FID Slots	14
2.5.1	Slot 0	14
2.5.2	Slot 1	15
2.5.3	Slot 2	16
A	Summary	17
A.1	Status	17
A.2	Comments	17

1 Front

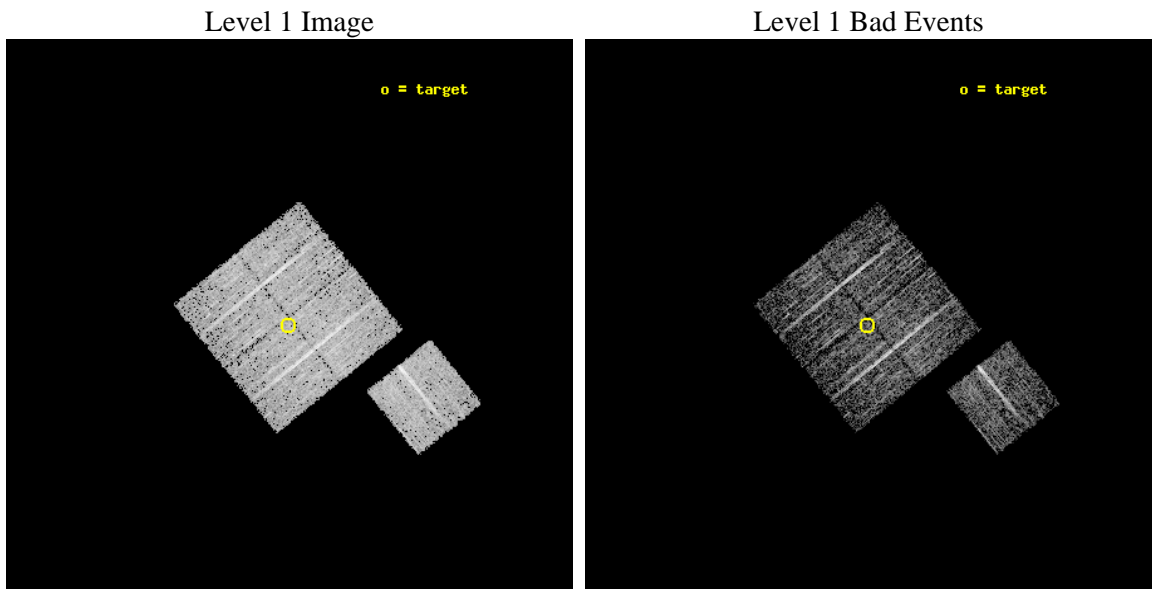
seq_num	900236	Sequence number
obs_id	3636	Observation id
title	CHANDRA LARGE SCALE SURVEY OF THE NOAO BOOTES DEEP FIELD	Proposal
observer	Dr. Stephen Murray	Principal investigator
object	NOAO FIELD F62	Source name
dtcycle	0	
cycle	P	events from which exps? Prim/Second/Both
ra_targ	216.314346	Observer's specified target RA [deg]
dec_targ	34.882776	Observer's specified target Dec [deg]
ra_nom	216.31169359938	Nominal RA [deg]
dec_nom	34.88689695041	Nominal Dec [deg]
roll_nom	141.01020757088	Nominal Roll [deg]
revision	3	Processing version of data
ontime	4776.3232784867	Sum of GTIs [s]
livetime	4713.9170985753	Livetime [s]
ontime0	4776.2001783848	Sum of GTIs [s]
ontime1	4776.2411984801	Sum of GTIs [s]
ontime2	4776.2822384834	Sum of GTIs [s]
ontime3	4776.3232784867	Sum of GTIs [s]
ontime6	4776.1591383815	Sum of GTIs [s]
l2events	9747	Number of level 2 events



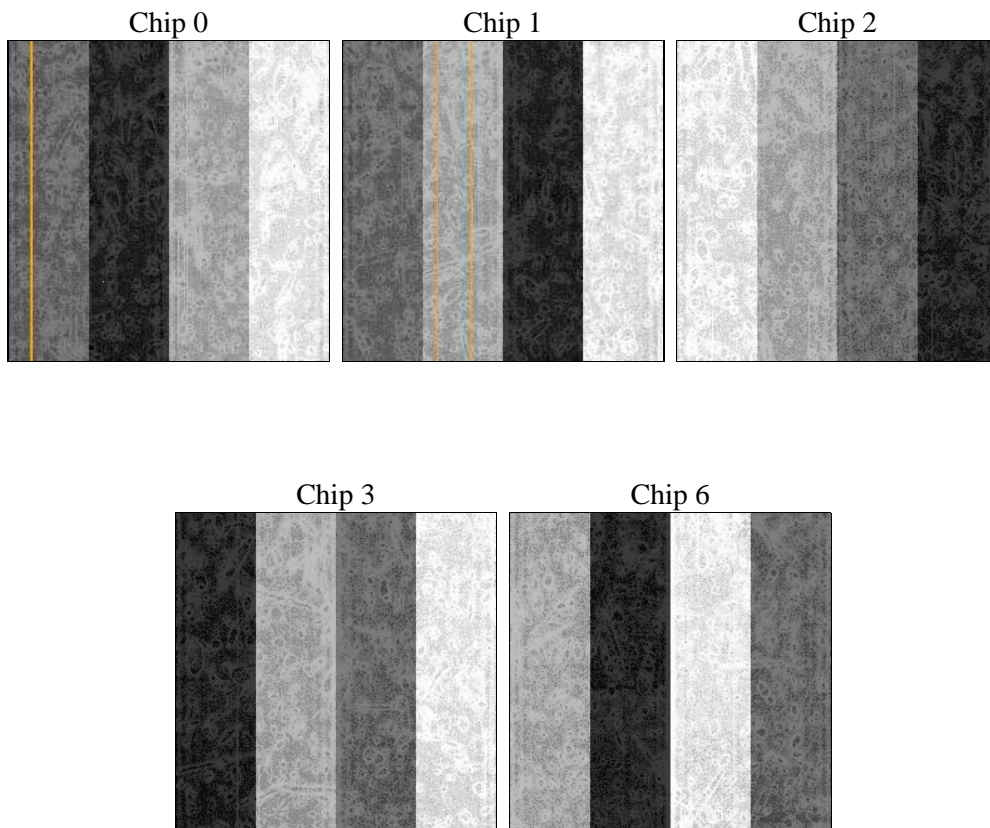
2 OBI

2.1 OBI

2.1.1 Images



2.1.2 Bias



2.1.3 Parameters

obi_num	0	Obi number	sched_exp_time	5000.000000	[s] Scheduled observation exposure time
ascdsver	8.4.5	Processing system revision	ontime	4776.3232784867	Sum of GTIs [s]
caldsver	4.5.2	 	ontime0	4776.2001783848	Sum of GTIs [s]
date	2012-10-24T20:50:27	Date and time of file creation	ontime1	4776.2411984801	Sum of GTIs [s]
revision	3	Processing version of data	ontime2	4776.2822384834	Sum of GTIs [s]
			ontime3	4776.3232784867	Sum of GTIs [s]
			ontime6	4776.1591383815	Sum of GTIs [s]
			l1events	120521	Number of level 1 events

2.1.4 Events

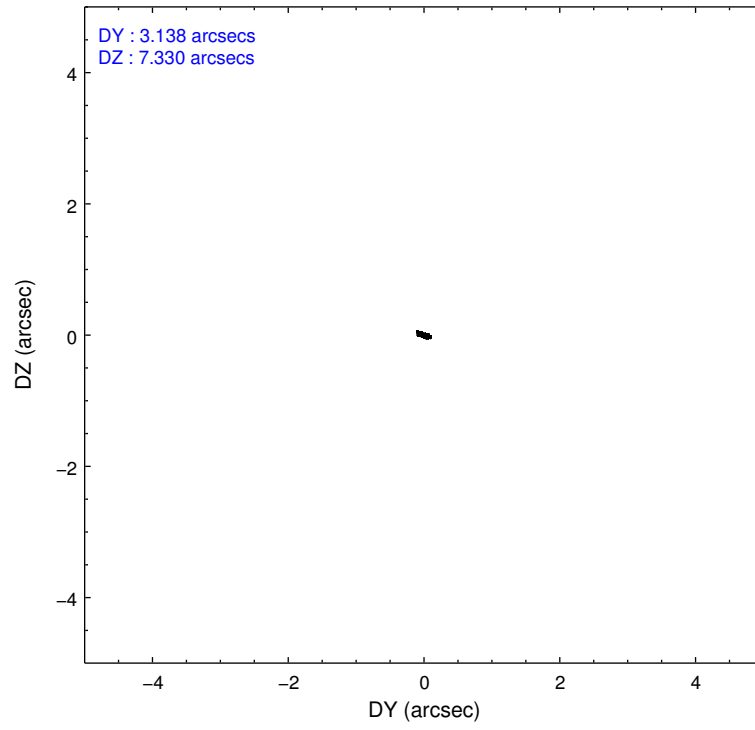
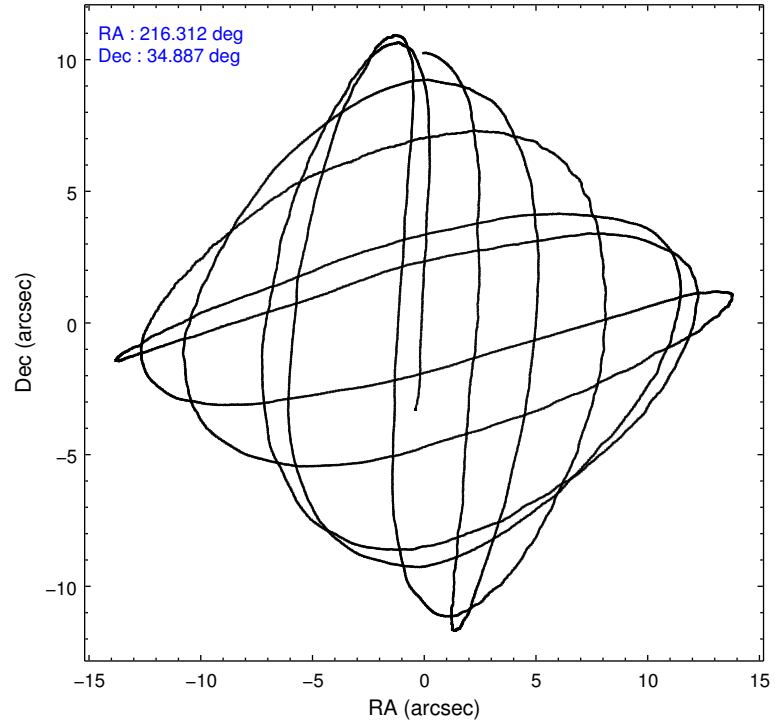
	ccd 0	ccd 1	ccd 2	ccd 3	ccd 6
level 1 events	23550	22307	26364	23573	24727
rejected events	21141	19802	24047	21333	22299
rejected %	89%	88%	91%	90%	90%

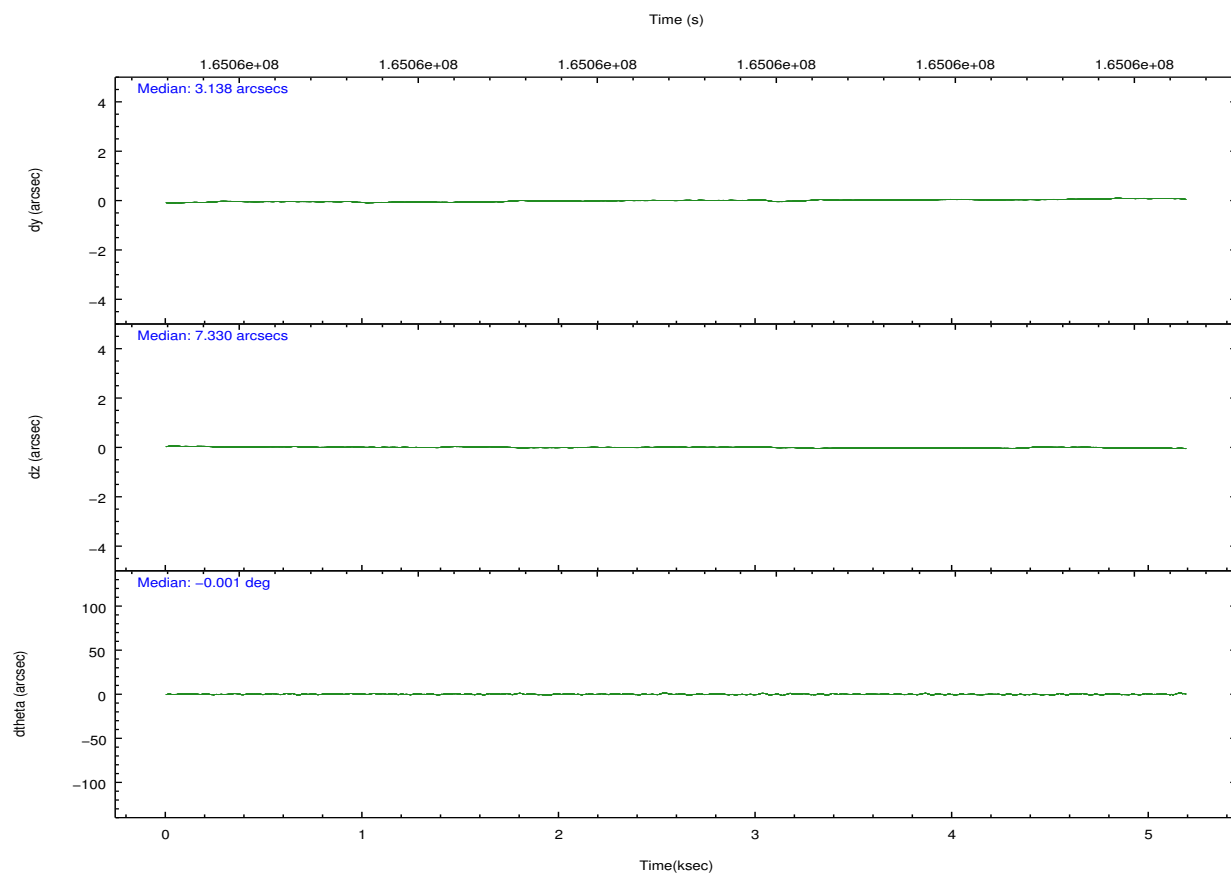
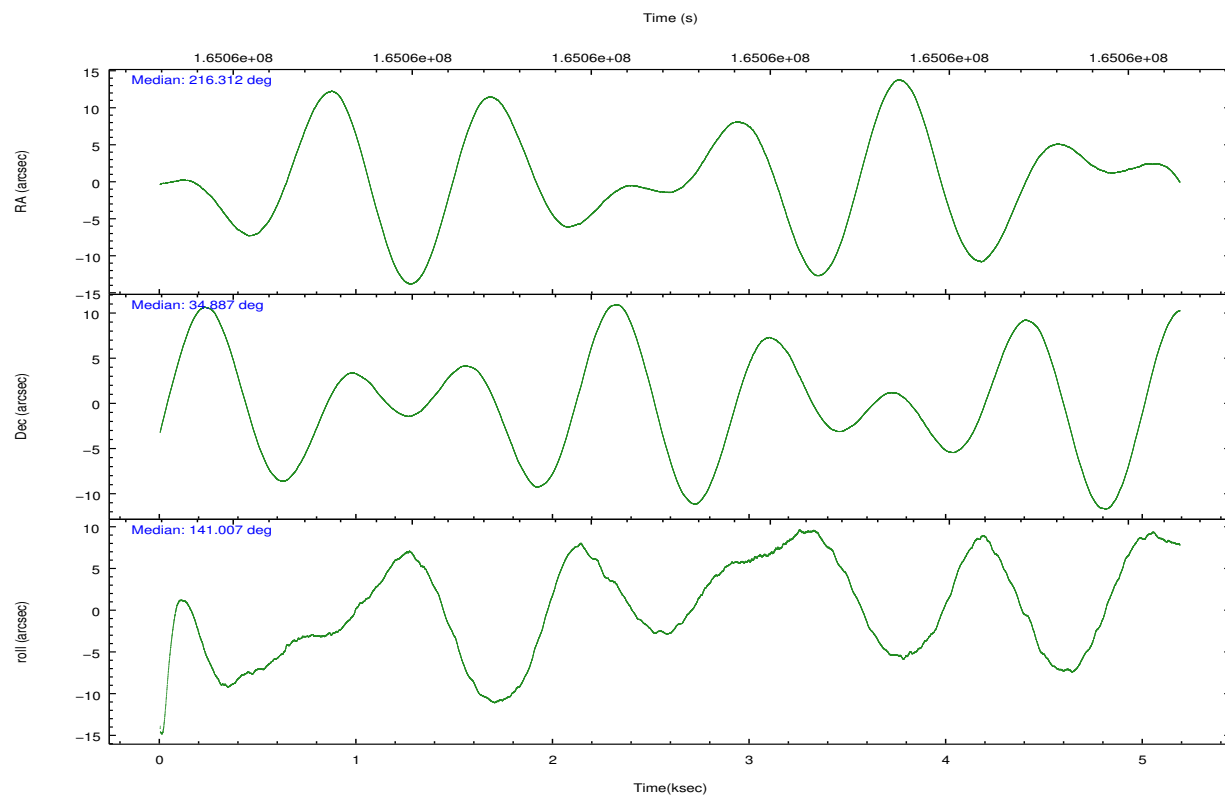
	ccd 0	ccd 1	ccd 2	ccd 3	ccd 6
grade 0 events	884	933	870	879	862
	3%	4%	3%	3%	3%
grade 1 events	11	6	10	14	8
	0%	0%	0%	0%	0%
grade 2 events	531	503	544	475	532
	2%	2%	2%	2%	2%
grade 3 events	291	319	281	281	288
	1%	1%	1%	1%	1%
grade 4 events	262	324	245	227	267
	1%	1%	0%	0%	1%
grade 5 events	714	764	709	783	818
	3%	3%	2%	3%	3%
grade 6 events	443	427	377	378	482
	1%	1%	1%	1%	1%
grade 7 events	20414	19031	23328	20536	21470
	86%	85%	88%	87%	86%

2.2 Compared Parameters

Parameter	Planned	Actual	Parameter	Planned	Actual
Instrument	ACIS	ACIS	Obspar format version number	7	7
Detector	ACIS-01236	ACIS-01236	Obspar file type	PREDICTED	ACTUAL
Grating	NONE	NONE	Obspar update status	NONE	UPDATED
Data mode	VFAINT	VFAINT	Number of optional ACIS chips dropped	0	0
Observation mode	POINTING	POINTING	On-chip summing requested	N	N
[deg] Pointing RA	216.344674	216.3116935993819	Subarray requested	NONE	NONE
[deg] Pointing Dec	34.882697	34.8868969504103	Alternating exposures requested	N	N
[deg] Pointing Roll	140.782654	141.0102075708802	[s] Primary exposure time	0.000000	3.1
[mm] SIM focus pos	-0.782348	-0.7809083437167272			
[mm] SIM defocus	0	0.001439871863259334			
[mm] SIM translation stage pos	-233.592463	-233.5874344608287			
[mm] SIM translation stage offset	0	-0.005018542100998502			
[s] Observation start time (MET)	165057039.184000	165056663.23587			
Observation start date	2003-03-26T09:09:35	2003-03-26T09:04:23			
[s] Observation end time (MET)	165062039.184000	165062173.6361			
Observation end date	2003-03-26T10:32:55	2003-03-26T10:36:13			
Read mode	TIMED	TIMED			

2.3 Aspect



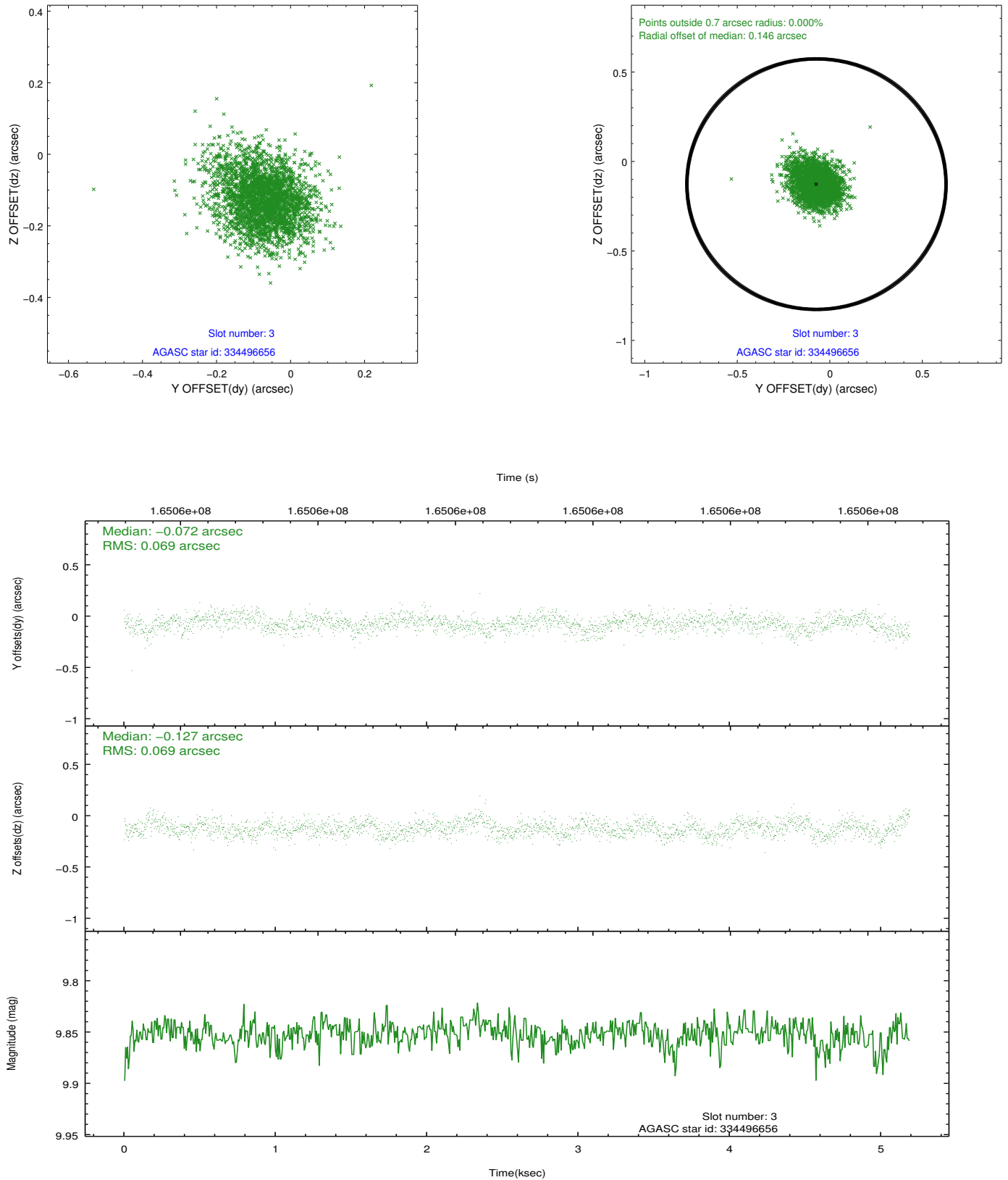


Slot Statistics

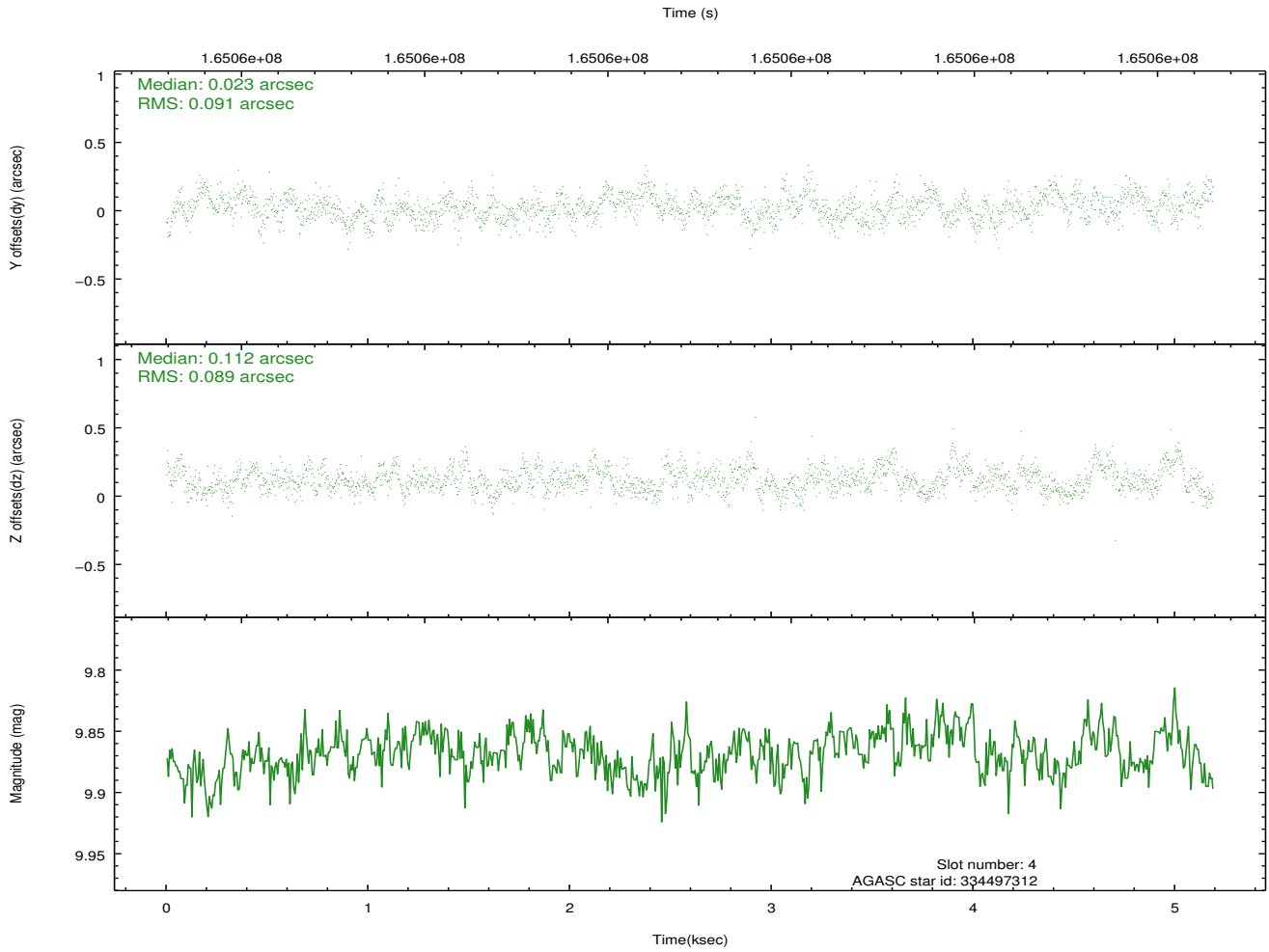
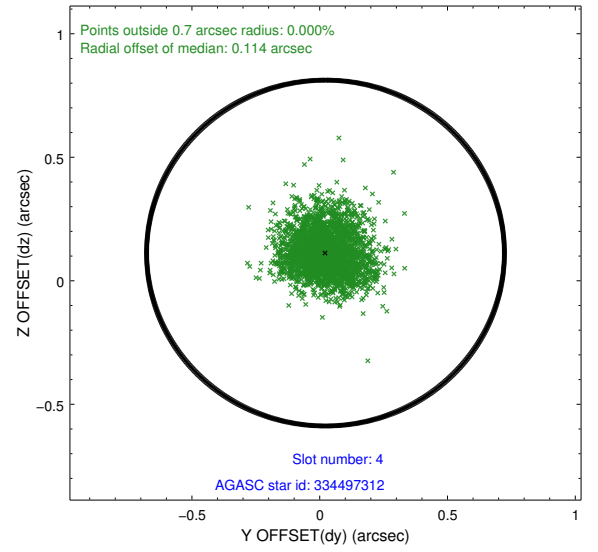
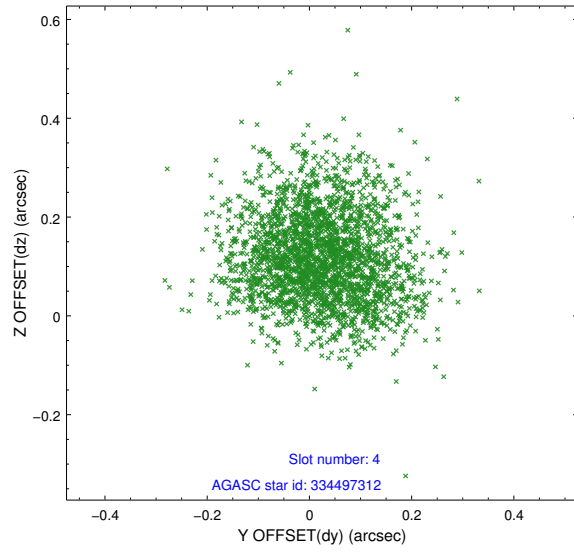
slot	status	id	mag	n_pts	med_dy	med_dz	dr1	dr2	ra	dec	mean_y	mean_z
0	FID	ACIS-I-1	7.25	1266	0.022	0.006	0.007	0.011	0.000000	0.000000	936.67	-830.74
1	FID	ACIS-I-5	7.24	1266	-0.097	0.062	0.006	0.010	0.000000	0.000000	-1810.88	1066.27
2	FID	ACIS-I-6	7.26	1266	-0.017	0.003	0.007	0.011	0.000000	0.000000	400.94	1712.00
3	GUIDE	334496656	9.85	2530	-0.072	-0.127	0.102	0.171	215.929218	35.031287	1288.63	358.22
4	GUIDE	334497312	9.87	2528	0.023	0.112	0.135	0.217	215.482164	35.047592	2352.19	1139.61
5	GUIDE	335021128	9.37	2522	0.072	0.035	0.090	0.145	216.159551	34.422539	-620.19	1631.43
6	GUIDE	335030384	8.84	2531	-0.029	-0.048	0.073	0.116	216.806407	34.722197	-1422.01	-417.74
7	GUIDE	335417968	9.40	2531	0.006	0.024	0.091	0.147	217.358149	35.055285	-1911.92	-2381.39

2.4 Star Slots

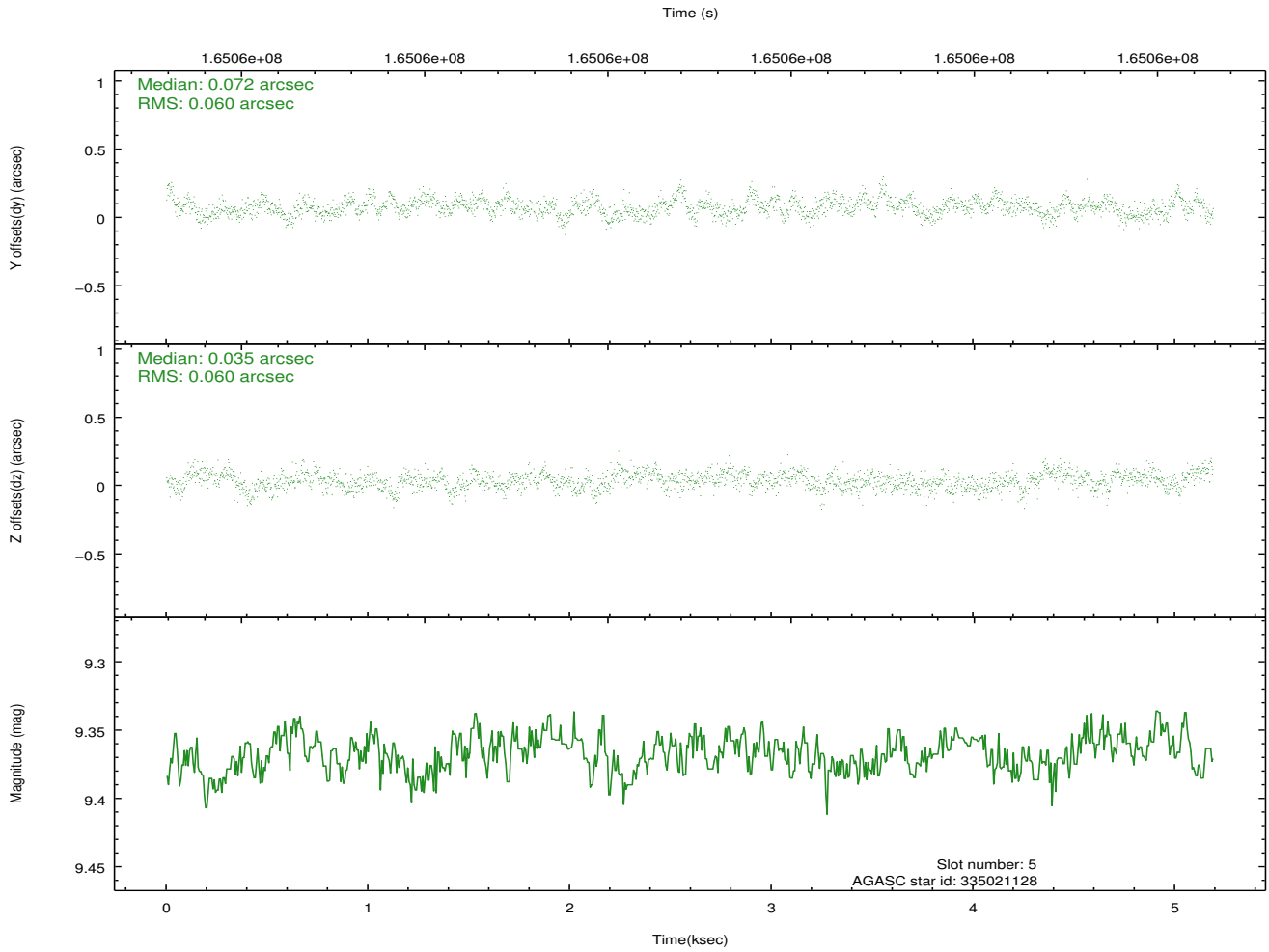
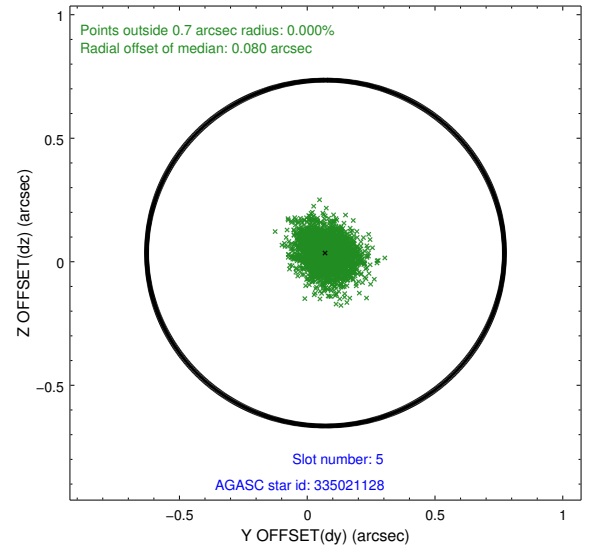
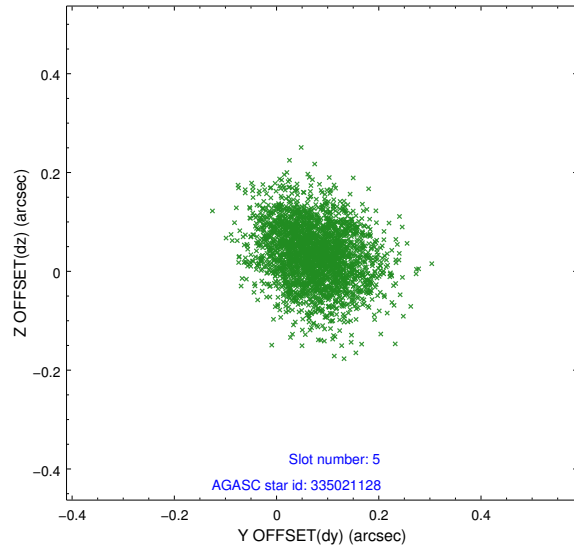
2.4.1 Slot 3



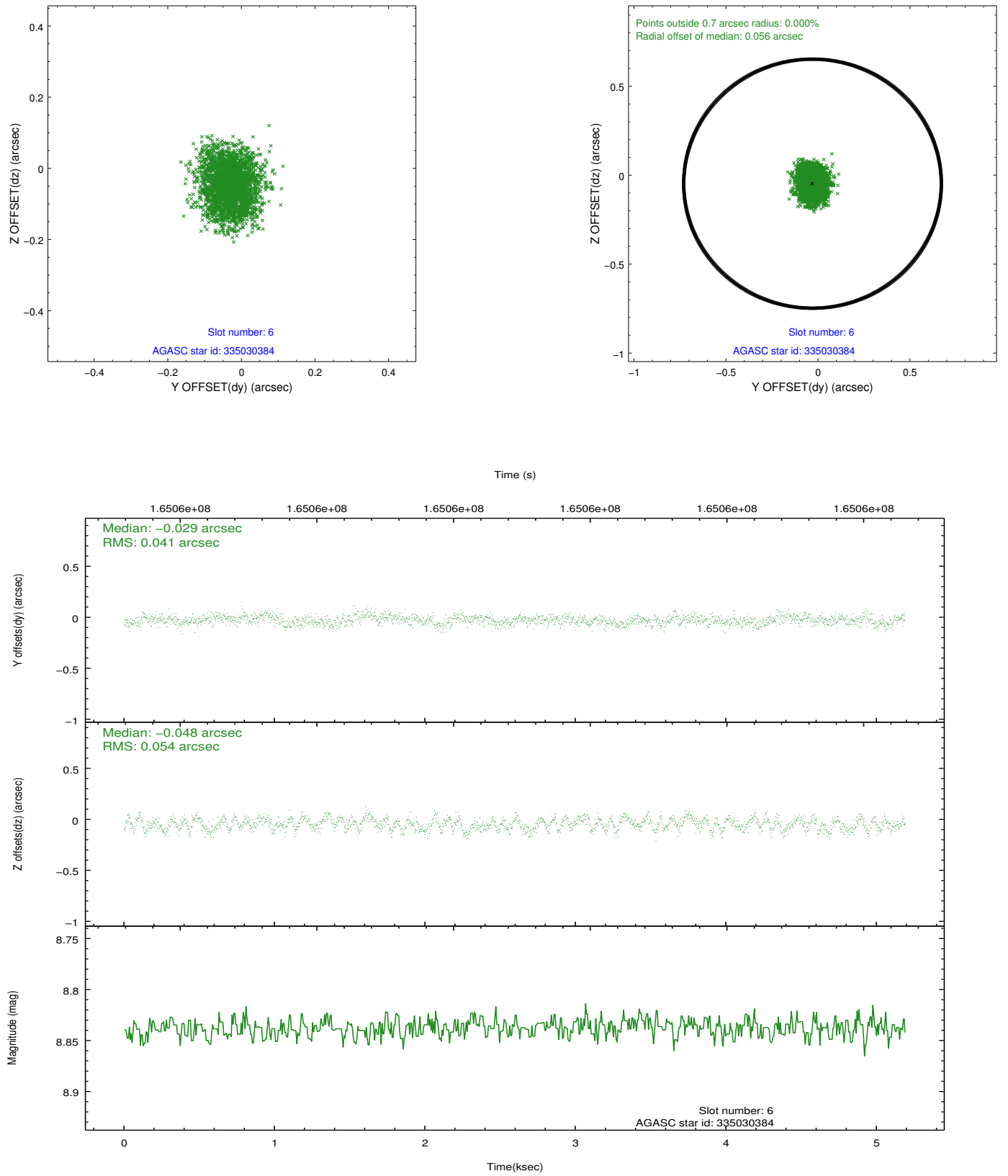
2.4.2 Slot 4



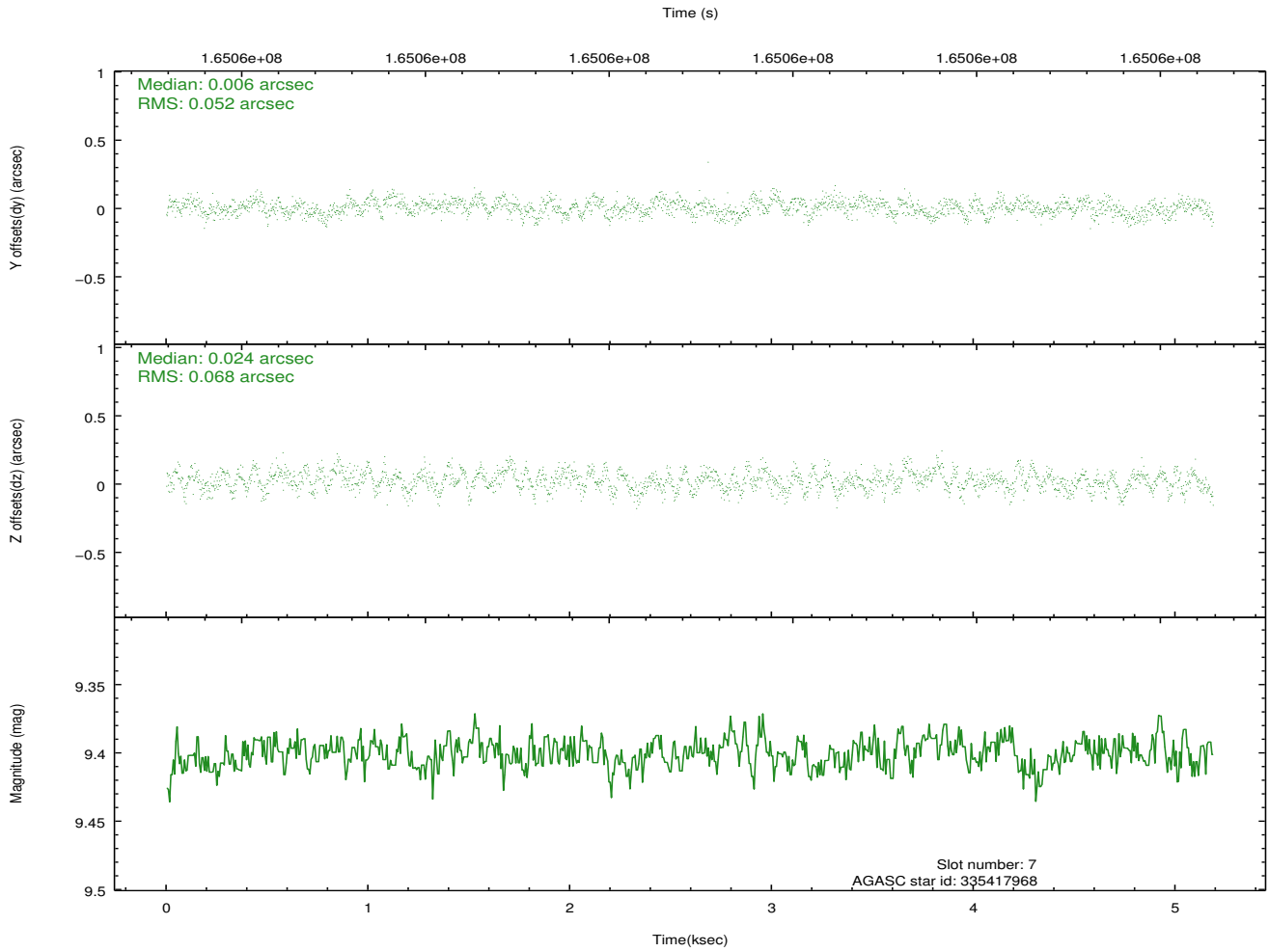
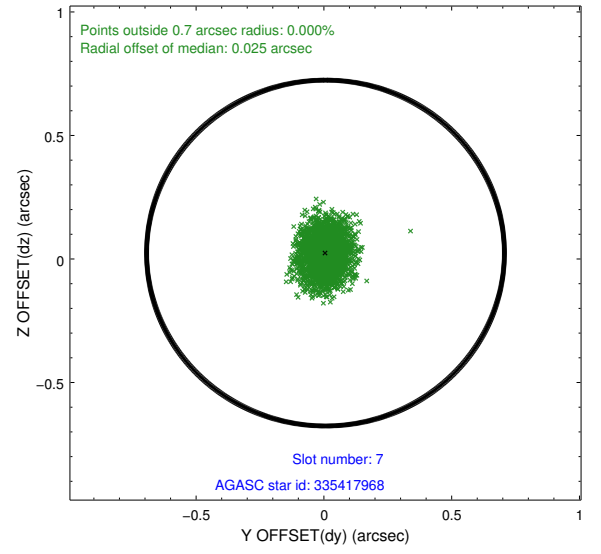
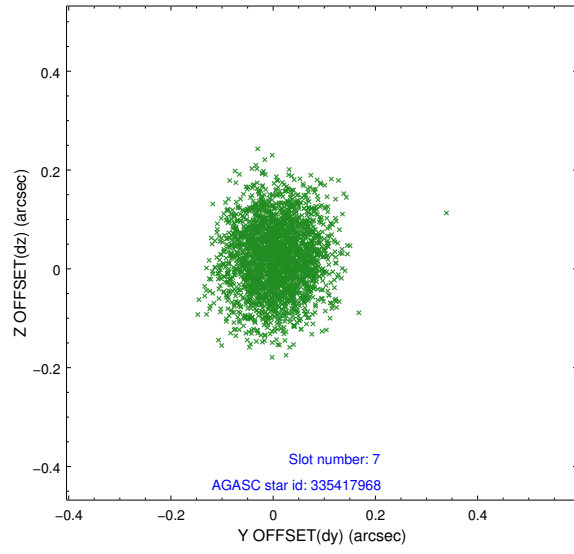
2.4.3 Slot 5



2.4.4 Slot 6

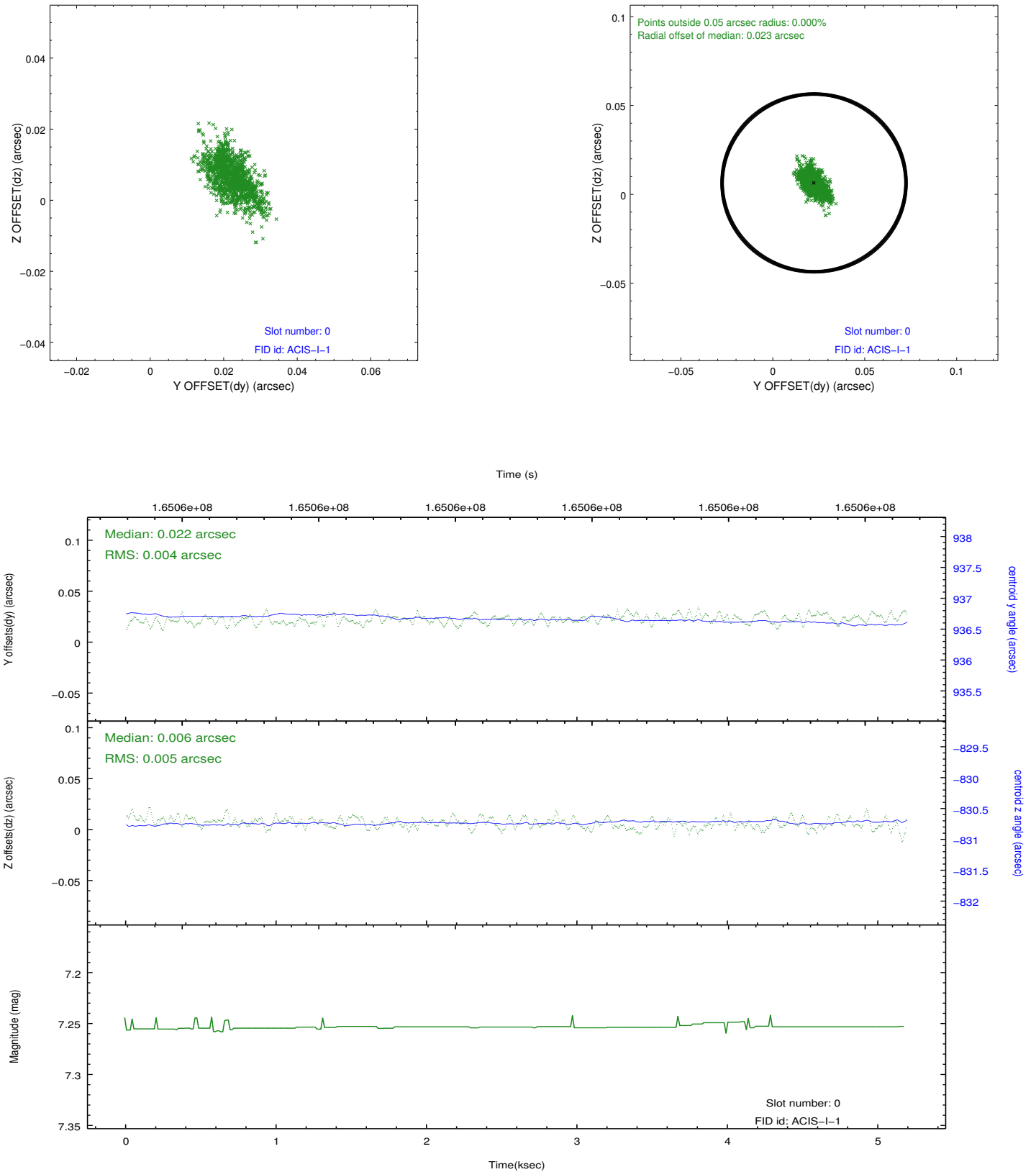


2.4.5 Slot 7

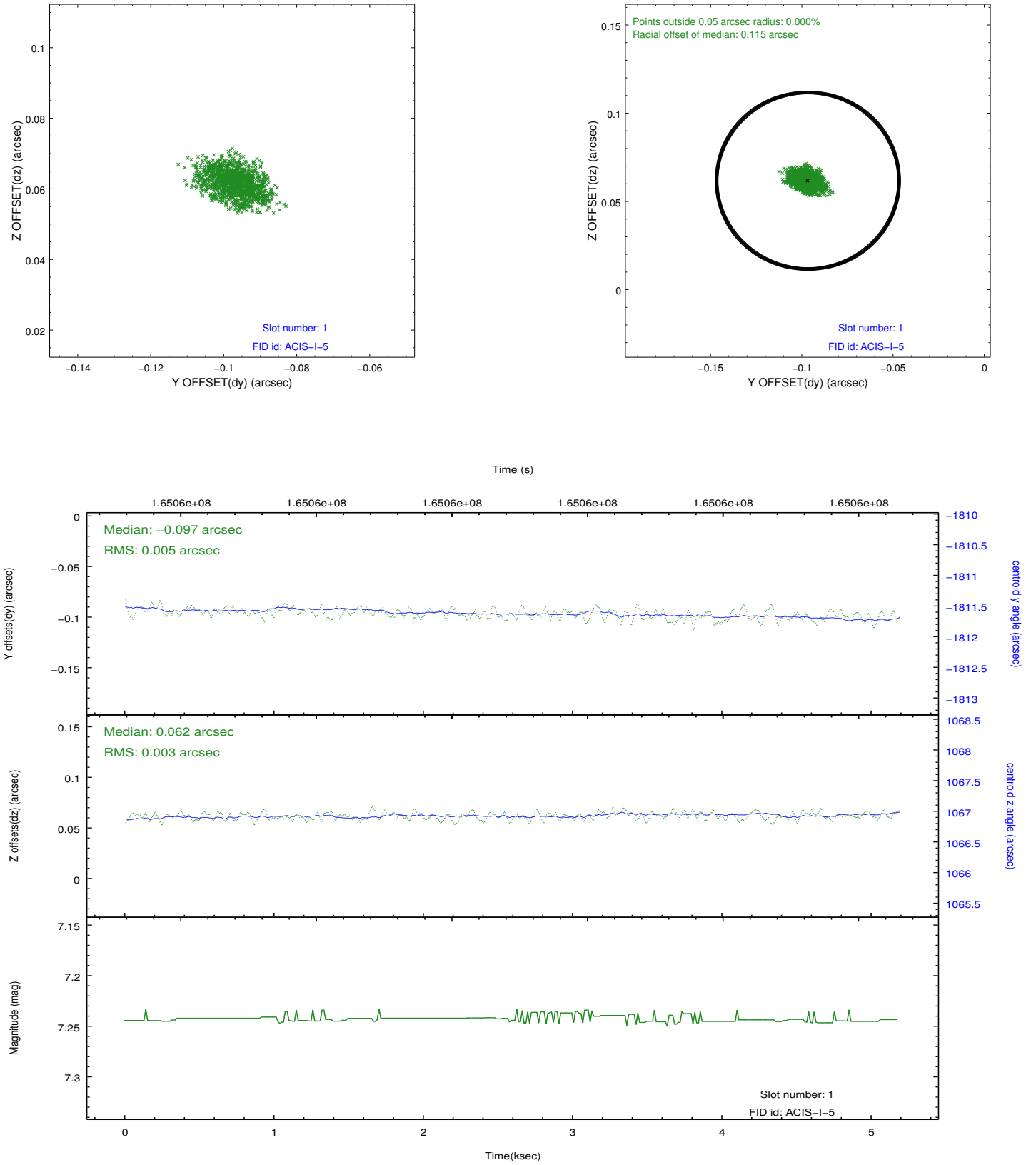


2.5 FID Slots

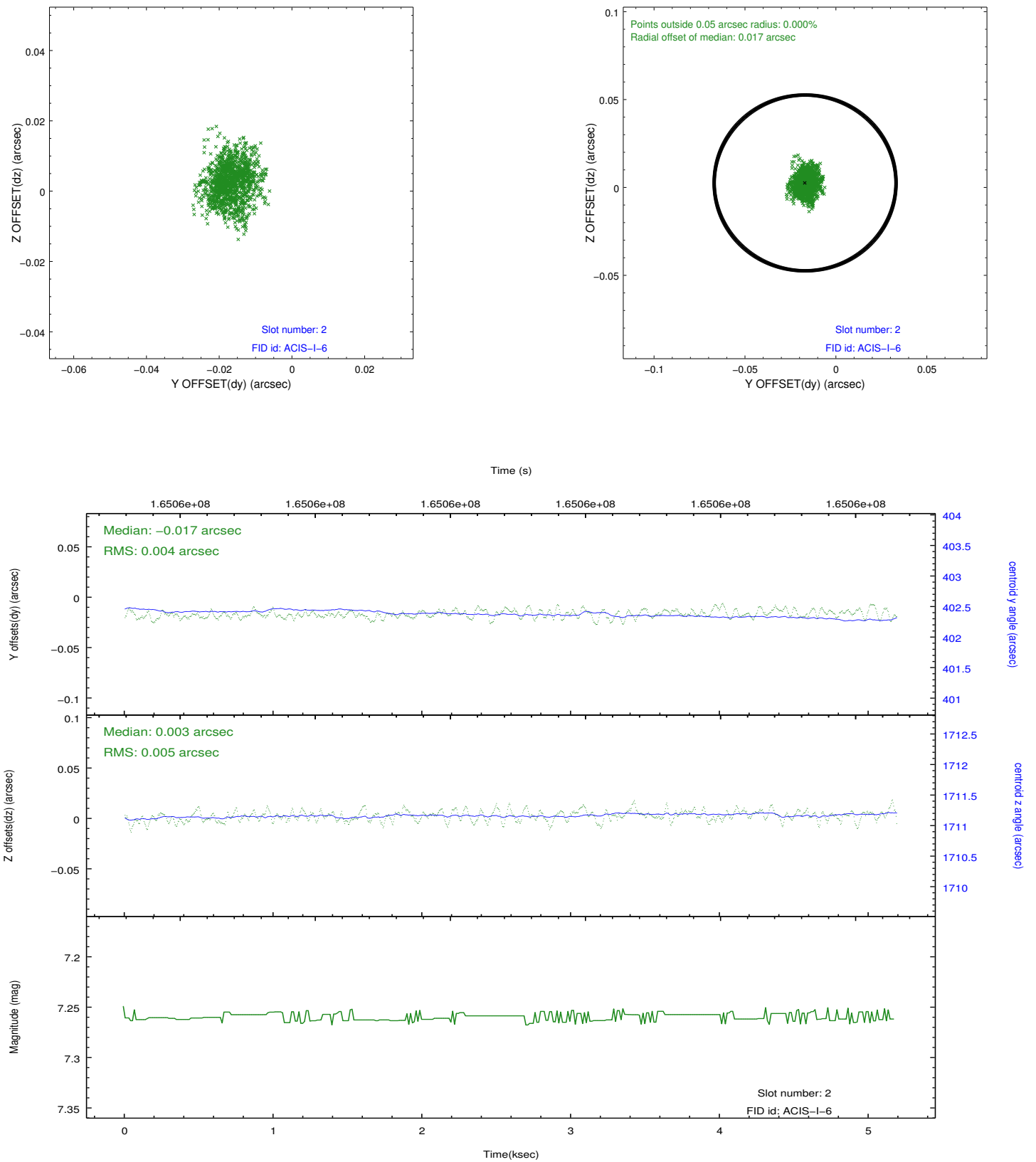
2.5.1 Slot 0



2.5.2 Slot 1



2.5.3 Slot 2



A Summary

A.1 Status

V&V Scientist	Jen Lauer
V&V Date (YYYY-MM-DD)	2012.11.08
V&V Edition	1
V&V Disposition and Status	OK
V&V Charge Time	4.777

A.2 Comments