

V&V Reference Report

L2 ASCDS Version : 8.4.5

Observation 3596 - L2 Version 3
Chandra X-Ray Center

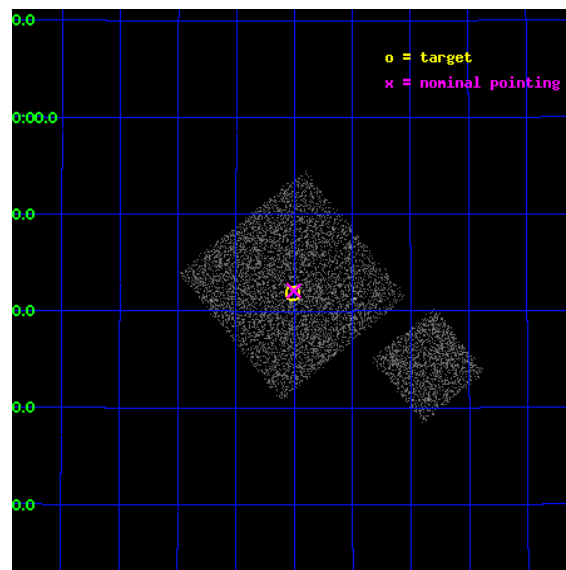
L2 Processing Date : Oct 26 2012

Contents

1	Front	2
2	OBI	3
2.1	OBI	3
2.1.1	Images	3
2.1.2	Bias	3
2.1.3	Parameters	4
2.1.4	Events	4
2.2	Compared Parameters	5
2.3	Aspect	6
2.4	Star Slots	9
2.4.1	Slot 3	9
2.4.2	Slot 4	10
2.4.3	Slot 5	11
2.4.4	Slot 6	12
2.4.5	Slot 7	13
2.5	FID Slots	14
2.5.1	Slot 0	14
2.5.2	Slot 1	15
2.5.3	Slot 2	16
A	Summary	17
A.1	Status	17
A.2	Comments	17

1 Front

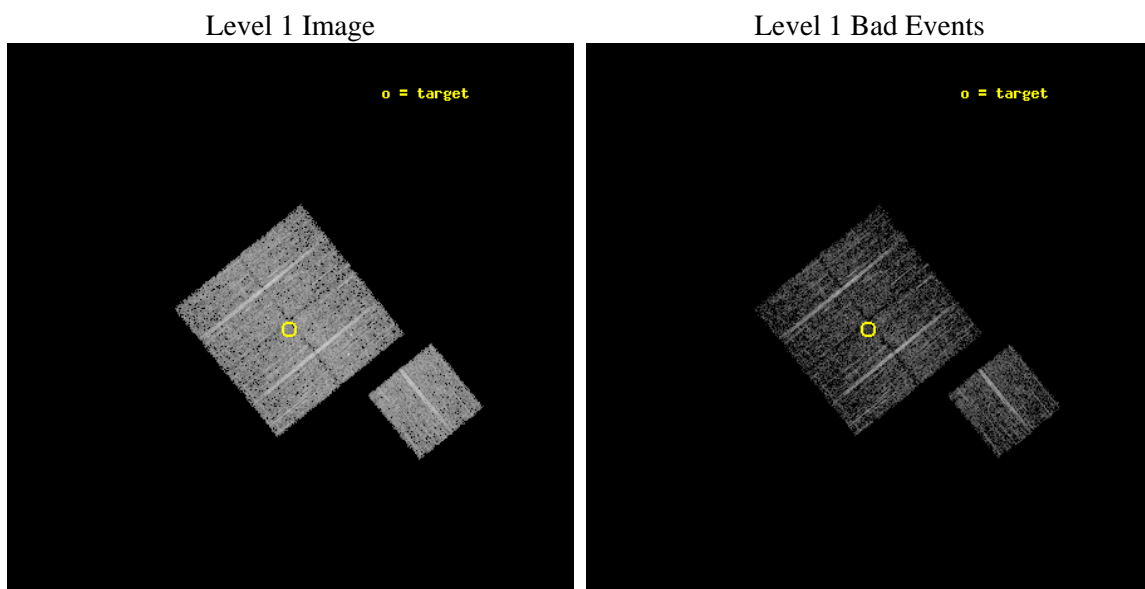
seq_num	900196	Sequence number
obs_id	3596	Observation id
title	CHANDRA LARGE SCALE SURVEY OF THE NOAO BOOTES DEEP FIELD	Proposal
observer	Dr. Stephen Murray	Principal investigator
object	NOAO FIELD F56	Source name
dtcycle	0	
cycle	P	events from which exps? Prim/Second/Both
ra_targ	219.753682	Observer's specified target RA [deg]
dec_targ	35.697552	Observer's specified target Dec [deg]
ra_nom	219.75095738423	Nominal RA [deg]
dec_nom	35.70162215423	Nominal Dec [deg]
roll_nom	141.01026107114	Nominal Roll [deg]
revision	3	Processing version of data
ontime	4670.9387346208	Sum of GTIs [s]
livetime	4609.9094813579	Livetime [s]
ontime0	4673.9566147625	Sum of GTIs [s]
ontime1	4673.9976547658	Sum of GTIs [s]
ontime2	4670.8977245092	Sum of GTIs [s]
ontime3	4670.9387346208	Sum of GTIs [s]
ontime6	4673.9155747592	Sum of GTIs [s]
l2events	9633	Number of level 2 events



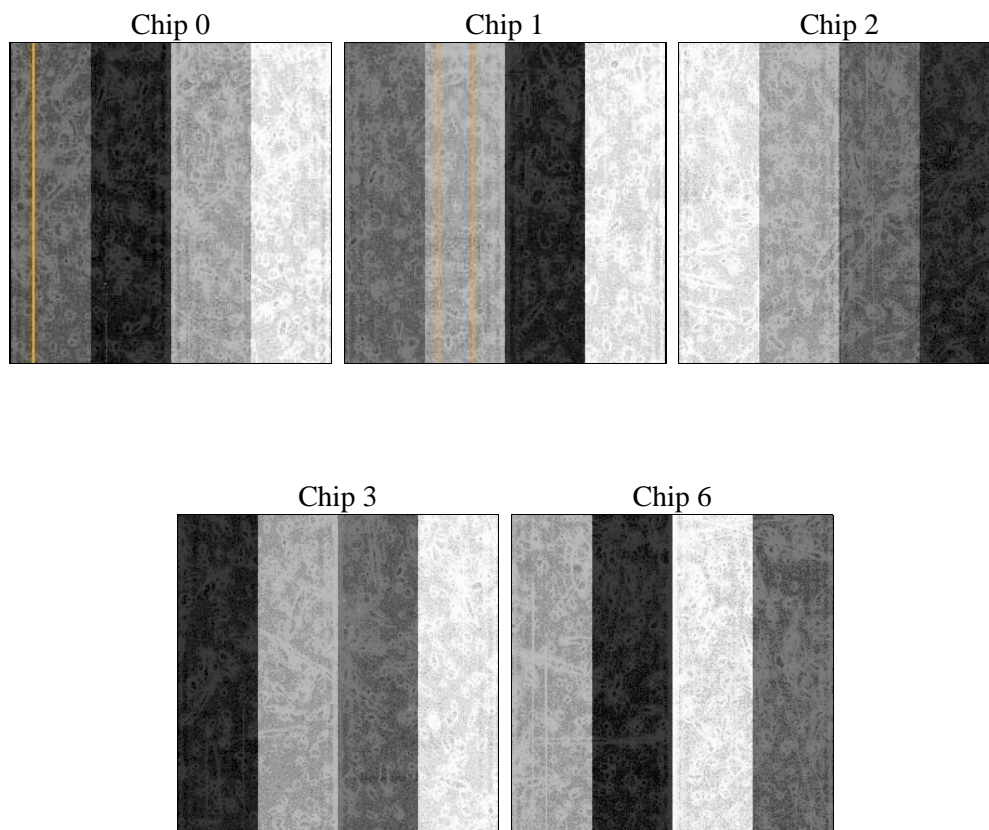
2 OBI

2.1 OBI

2.1.1 Images



2.1.2 Bias



2.1.3 Parameters

obi_num	1	Obi number	sched_exp_time	4900.000000	[s] Scheduled observation exposure time
ascdsver	8.4.5	Processing system revision	ontime	4670.9387346208	Sum of GTIs [s]
caldsver	4.5.2	 	ontime0	4673.9566147625	Sum of GTIs [s]
date	2012-10-26T00:16:35	Date and time of file creation	ontime1	4673.9976547658	Sum of GTIs [s]
revision	3	Processing version of data	ontime2	4670.8977245092	Sum of GTIs [s]
			ontime3	4670.9387346208	Sum of GTIs [s]
			ontime6	4673.9155747592	Sum of GTIs [s]
			l1events	112881	Number of level 1 events

2.1.4 Events

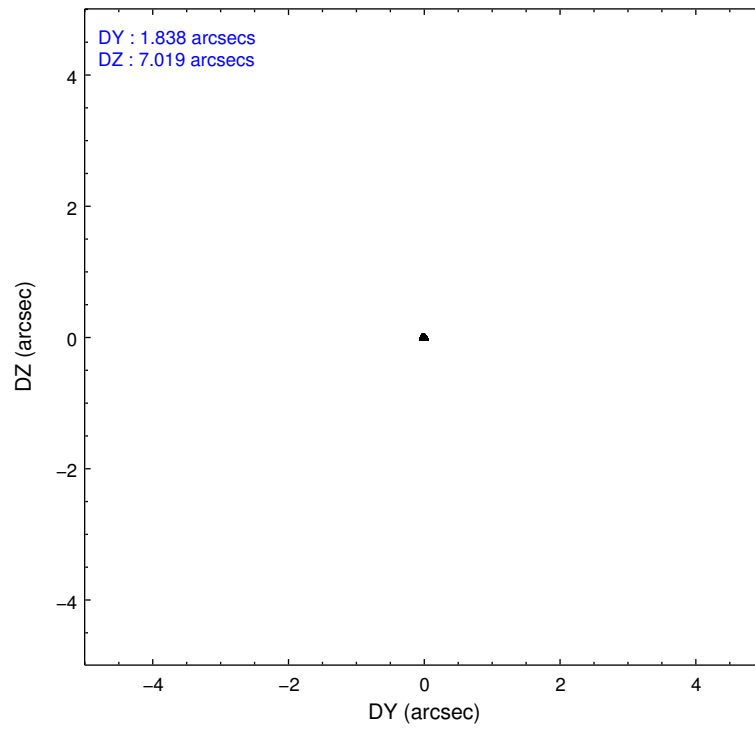
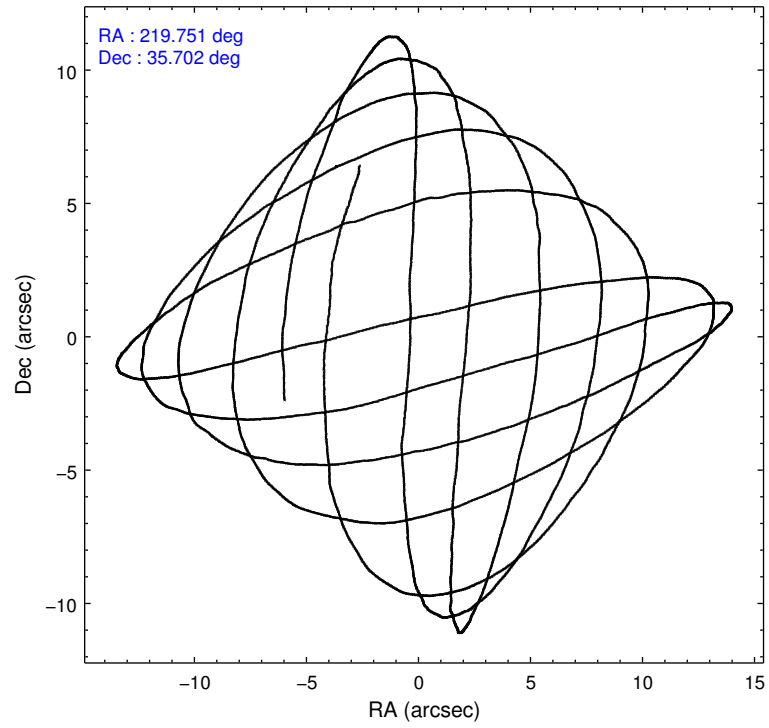
	ccd 0	ccd 1	ccd 2	ccd 3	ccd 6
level 1 events	20895	21440	23864	22884	23798
rejected events	18589	19053	21279	20770	21472
rejected %	88%	88%	89%	90%	90%

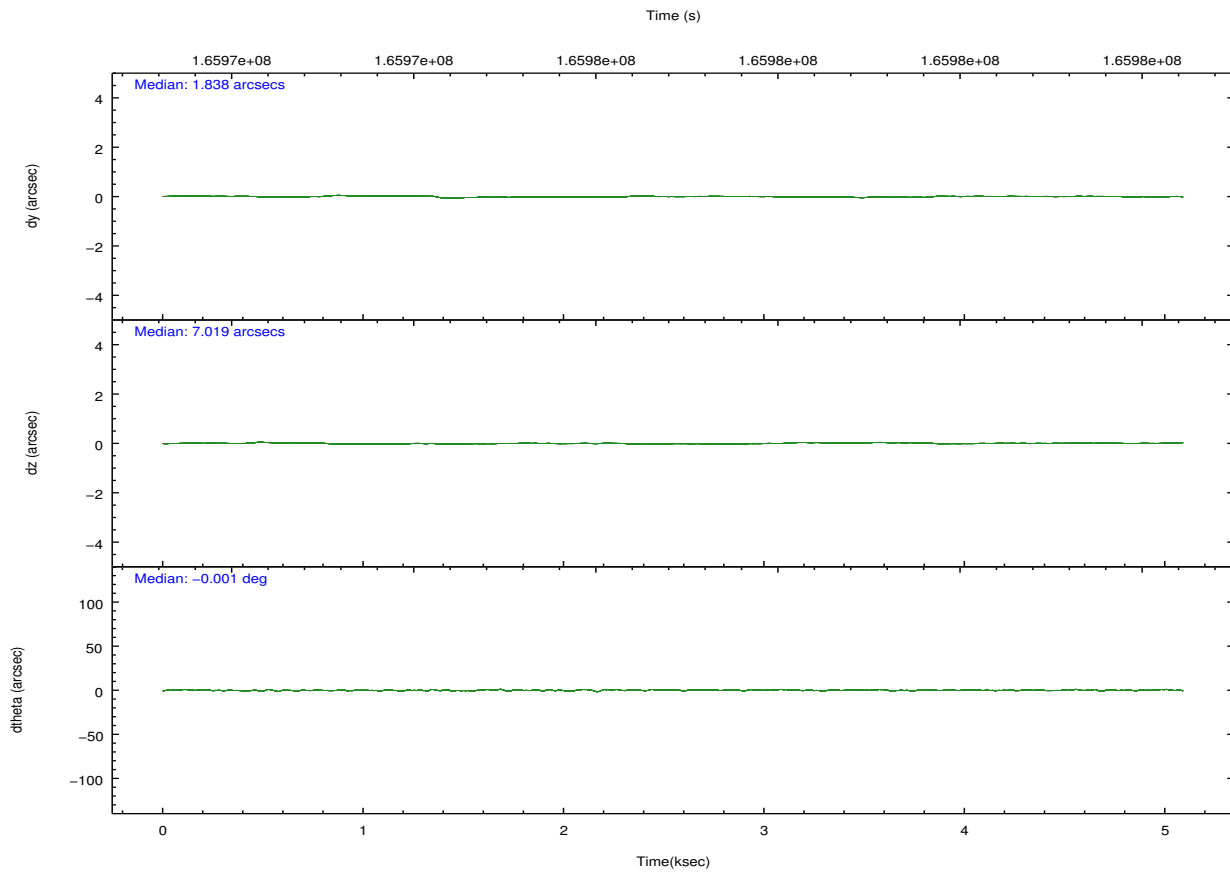
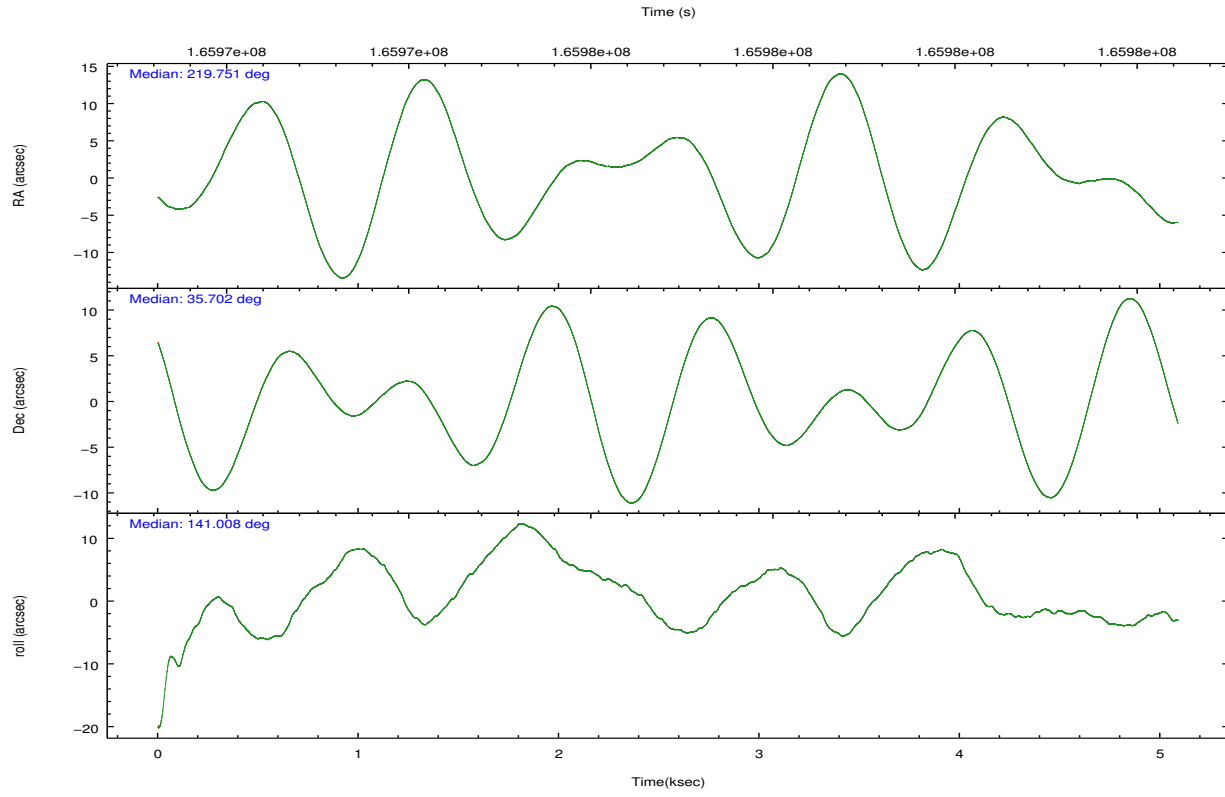
	ccd 0	ccd 1	ccd 2	ccd 3	ccd 6
grade 0 events	845	855	1176	826	769
	4%	3%	4%	3%	3%
grade 1 events	12	12	14	10	12
	0%	0%	0%	0%	0%
grade 2 events	493	500	521	407	536
	2%	2%	2%	1%	2%
grade 3 events	282	291	272	246	291
	1%	1%	1%	1%	1%
grade 4 events	251	278	249	233	252
	1%	1%	1%	1%	1%
grade 5 events	642	757	625	718	755
	3%	3%	2%	3%	3%
grade 6 events	440	464	371	405	481
	2%	2%	1%	1%	2%
grade 7 events	17930	18283	20636	20039	20702
	85%	85%	86%	87%	86%

2.2 Compared Parameters

Parameter	Planned	Actual	Parameter	Planned	Actual
Instrument	ACIS	ACIS	Obspar format version number	7	7
Detector	ACIS-01236	ACIS-01236	Obspar file type	PREDICTED	ACTUAL
Grating	NONE	NONE	Obspar update status	NONE	UPDATED
Data mode	VFAINT	VFAINT	Number of optional ACIS chips dropped	0	0
Observation mode	POINTING	POINTING	On-chip summing requested	N	N
[deg] Pointing RA	219.784321	219.750957384232	Subarray requested	NONE	NONE
[deg] Pointing Dec	35.697479	35.7016221542297	Alternating exposures requested	N	N
[deg] Pointing Roll	140.782122	141.0102610711373	[s] Primary exposure time	0.000000	3.1
[mm] SIM focus pos	-0.782348	-0.7809083437167272			
[mm] SIM defocus	0	0.001439871863259334			
[mm] SIM translation stage pos	-233.592463	-233.5874344608287			
[mm] SIM translation stage offset	0	-0.005018542100998502			
[s] Observation start time (MET)	165973072.184000	165972695.5245			
Observation start date	2003-04-05T23:36:48	2003-04-05T23:31:35			
[s] Observation end time (MET)	165977972.184000	165978162.36223			
Observation end date	2003-04-06T00:58:28	2003-04-06T01:02:42			
Read mode	TIMED	TIMED			

2.3 Aspect



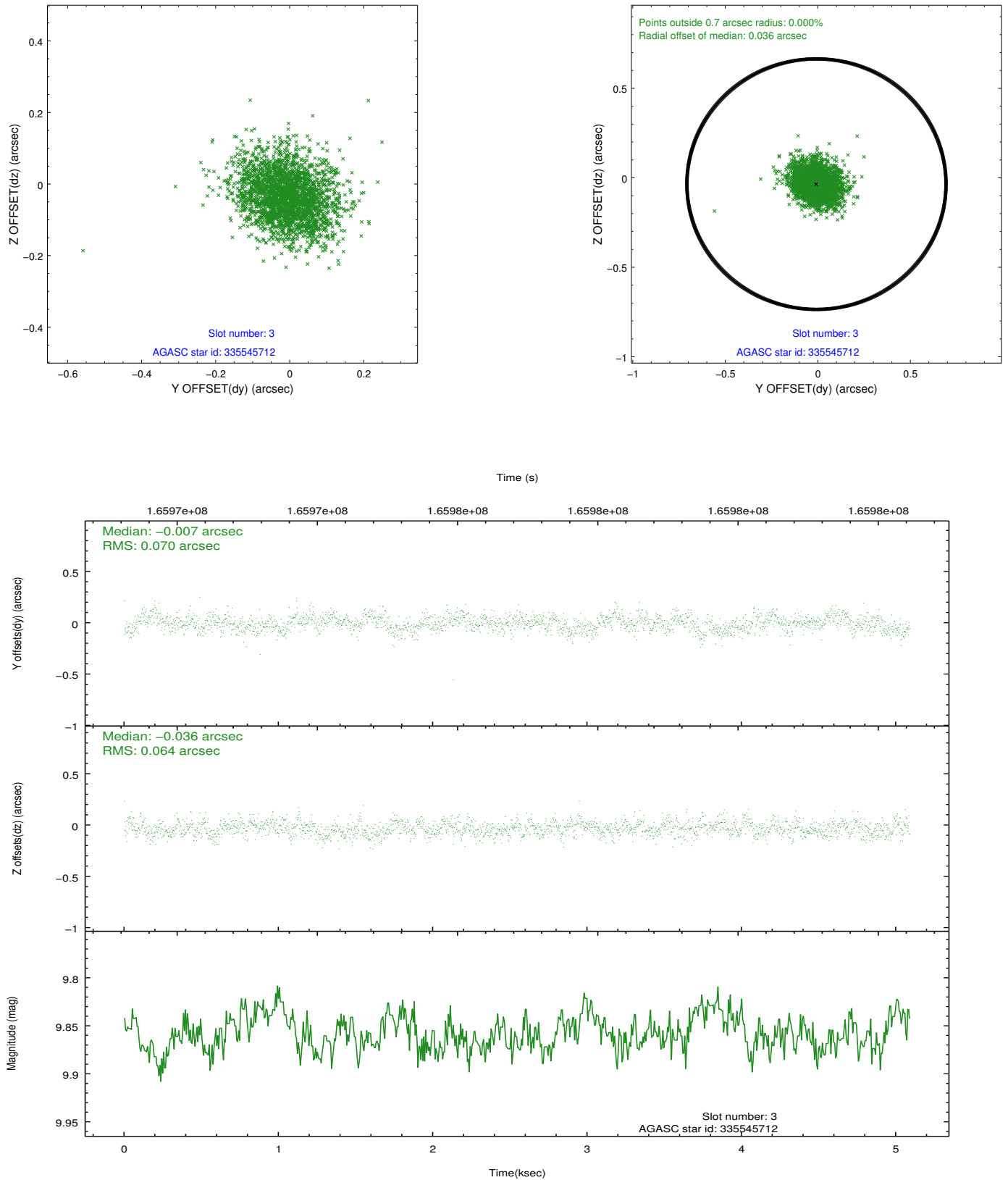


Slot Statistics

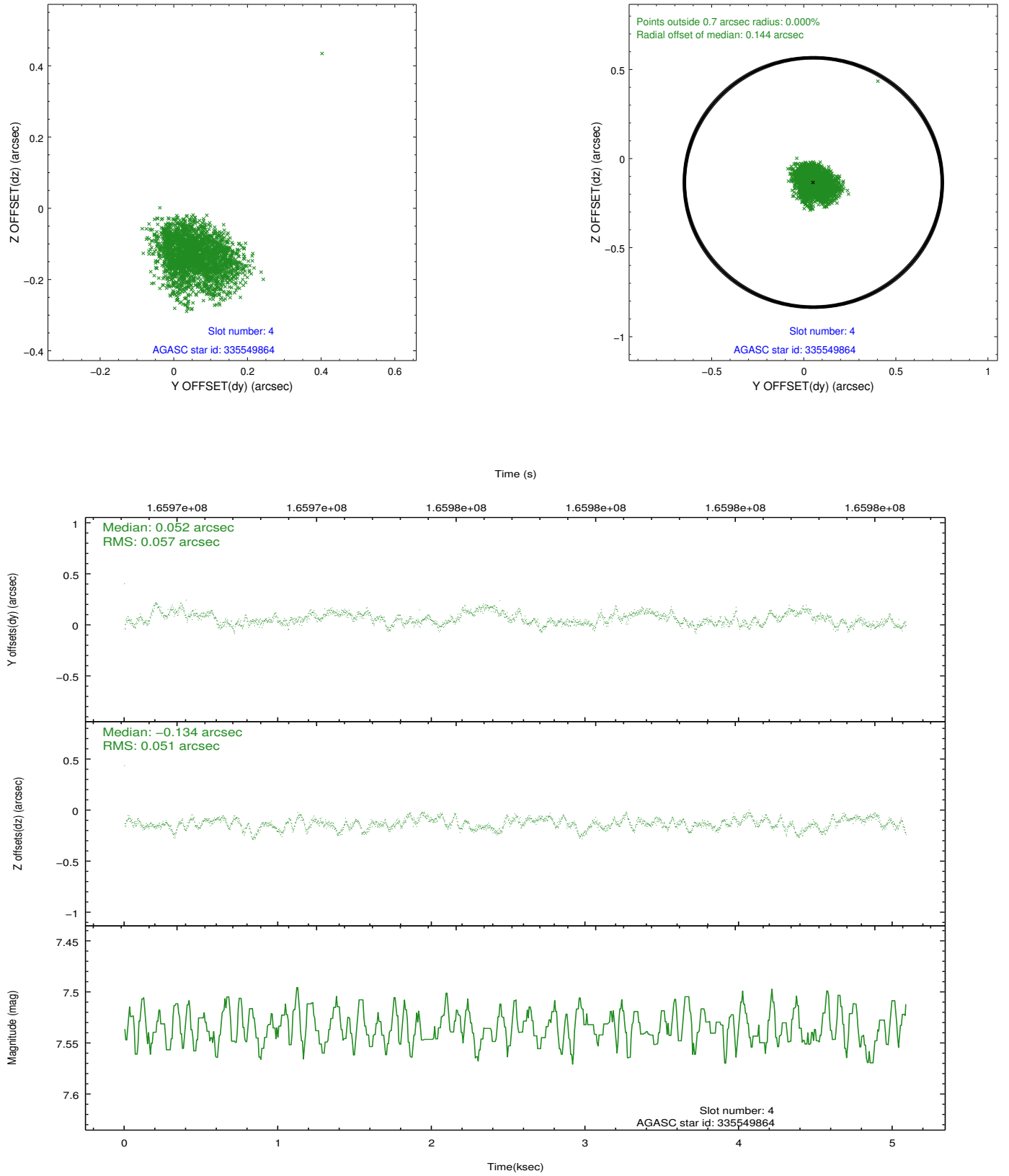
slot	status	id	mag	n_pts	med_dy	med_dz	dr1	dr2	ra	dec	mean_y	mean_z
0	FID	ACIS-I-1	7.25	1242	0.009	0.011	0.006	0.011	0.000000	0.000000	937.98	-830.42
1	FID	ACIS-I-5	7.24	1242	-0.076	0.053	0.006	0.010	0.000000	0.000000	-1809.50	1066.58
2	FID	ACIS-I-6	7.26	1242	-0.024	0.007	0.007	0.011	0.000000	0.000000	402.26	1712.34
3	GUIDE	335545712	9.86	2480	-0.007	-0.036	0.099	0.164	220.165930	35.199137	-2002.39	678.42
4	GUIDE	335549864	7.54	2483	0.052	-0.134	0.082	0.127	219.286726	35.929745	1654.36	266.73
5	GUIDE	335550024	9.56	2482	0.011	0.052	0.152	0.232	220.212917	36.084240	-82.91	-1869.01
6	GUIDE	335551264	9.25	2481	-0.110	0.120	0.099	0.153	219.547096	36.423006	2184.75	-1590.26
7	GUIDE	335552808	9.66	2480	0.038	-0.002	0.097	0.155	220.586307	35.562846	-2118.56	-1117.40

2.4 Star Slots

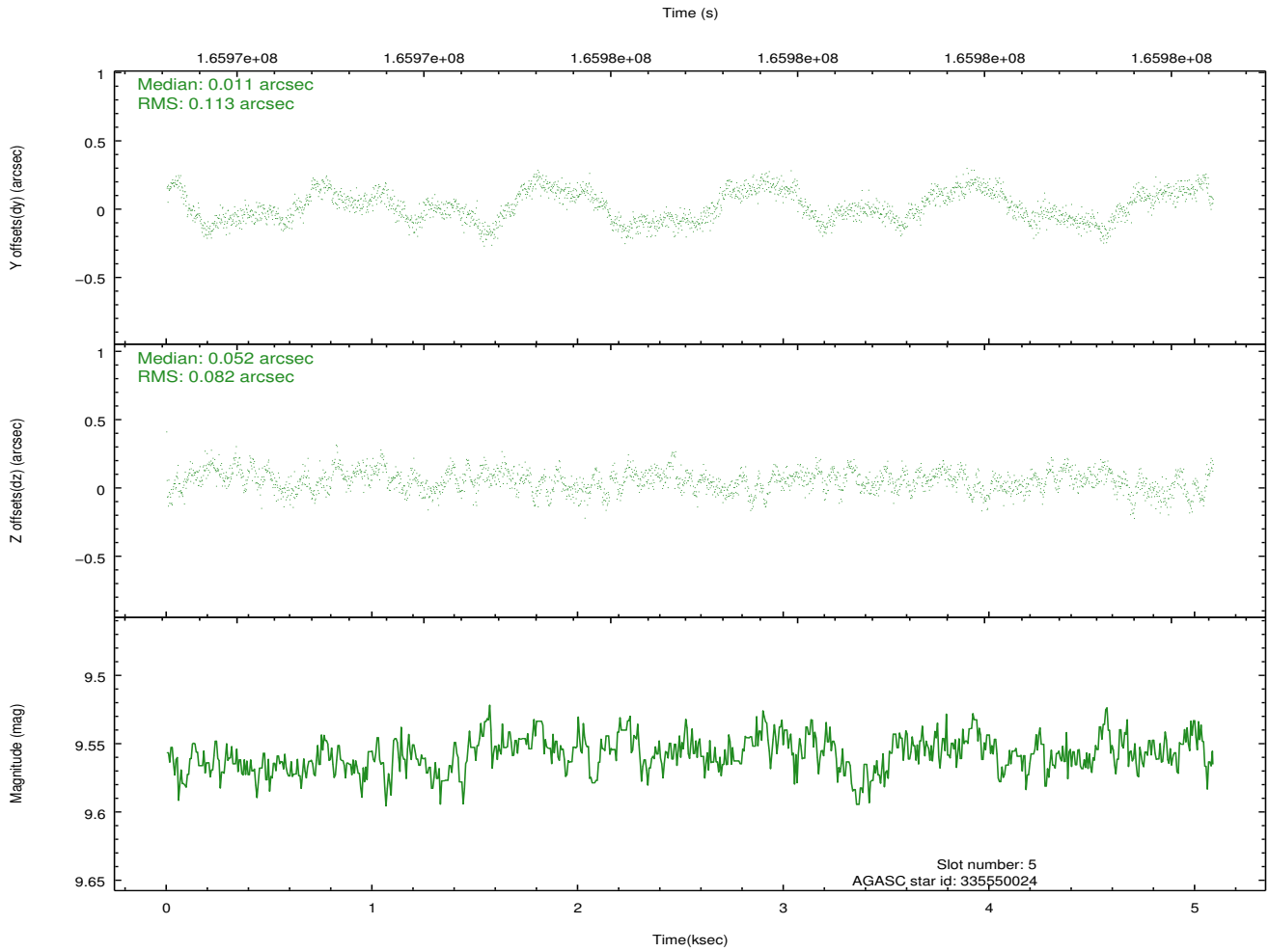
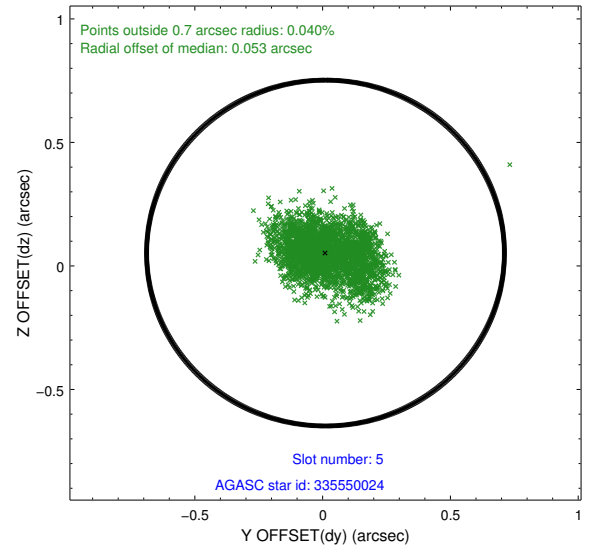
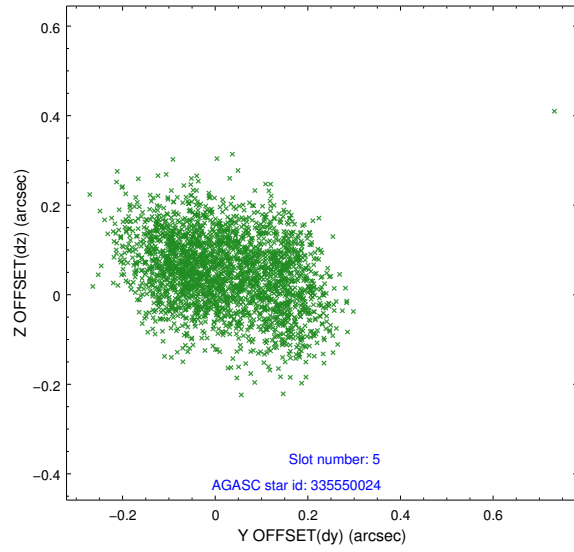
2.4.1 Slot 3



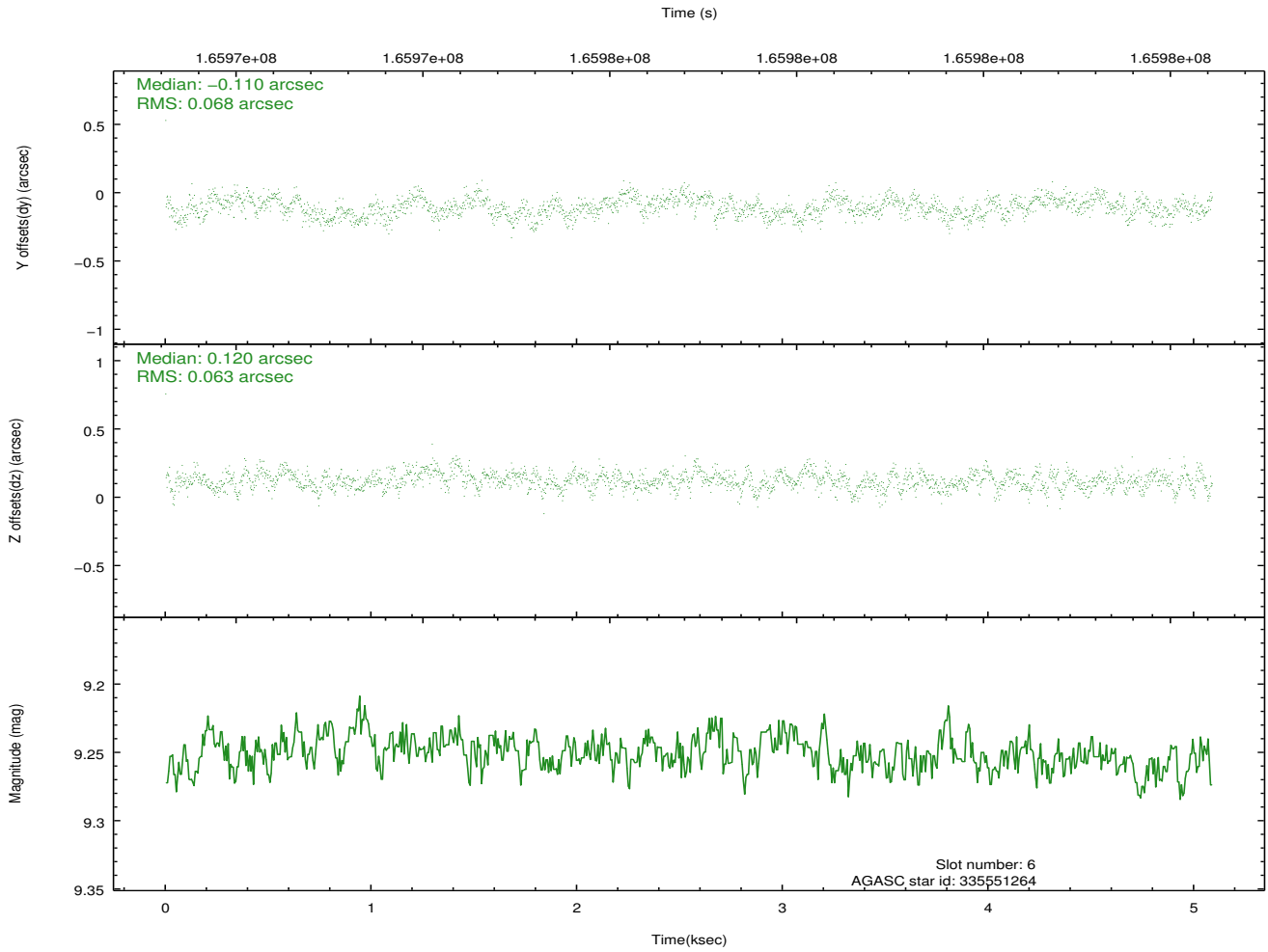
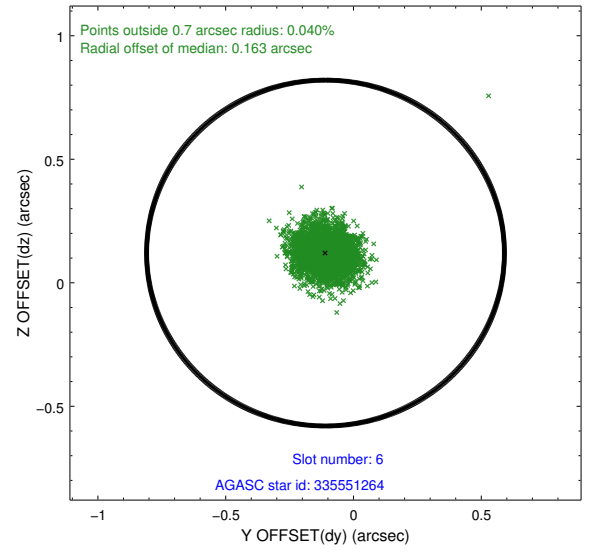
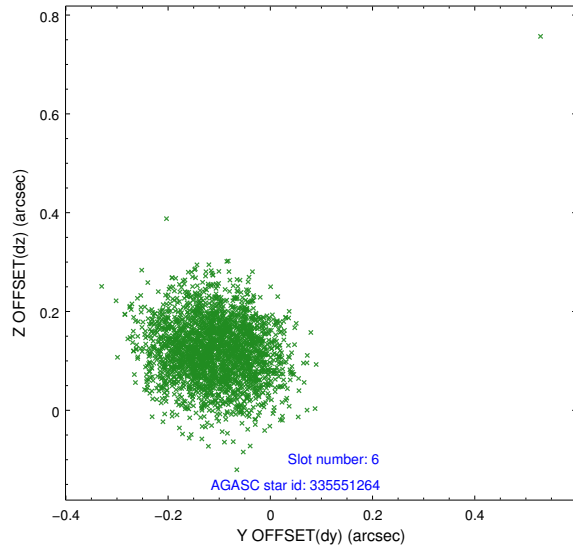
2.4.2 Slot 4



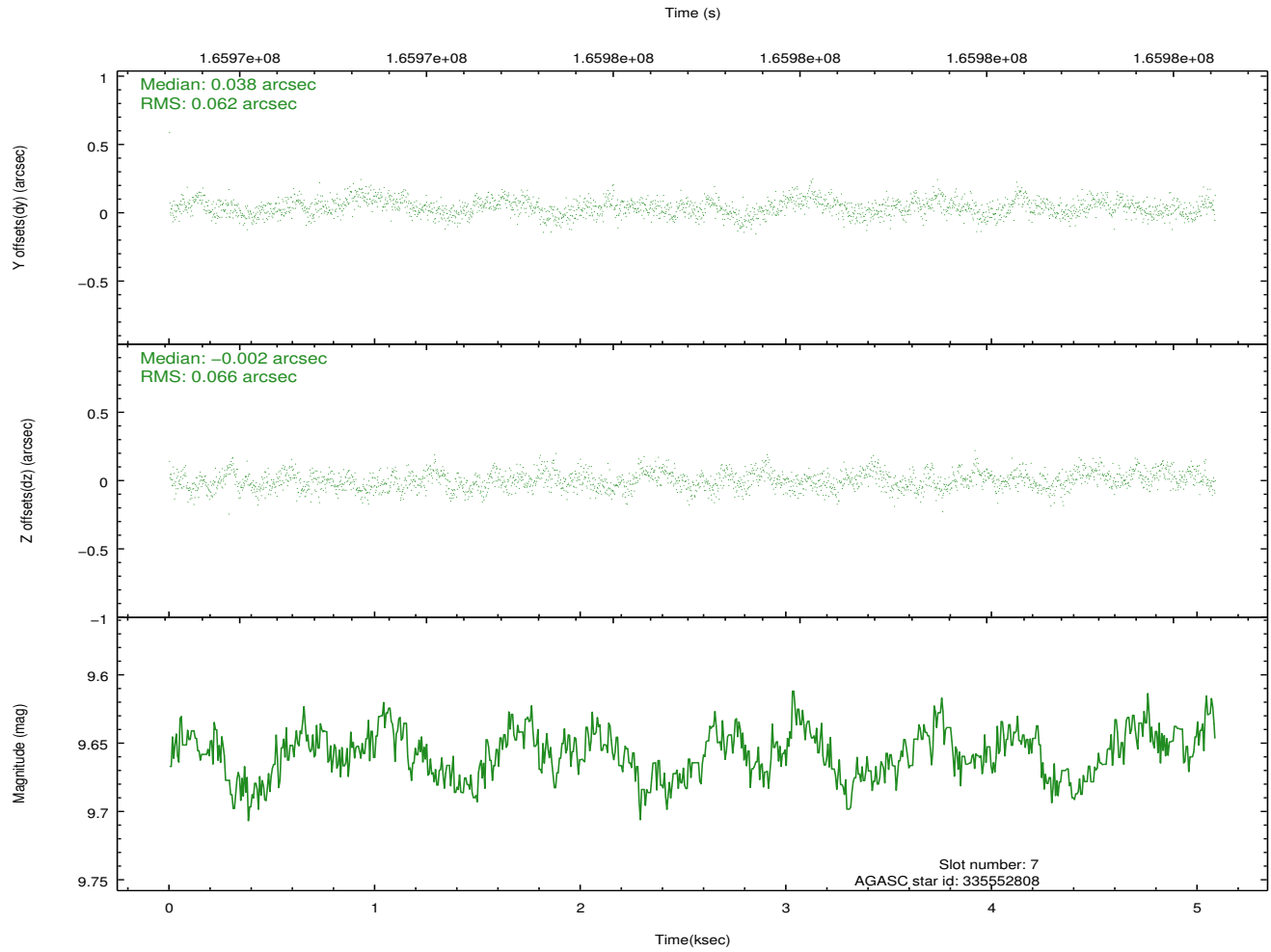
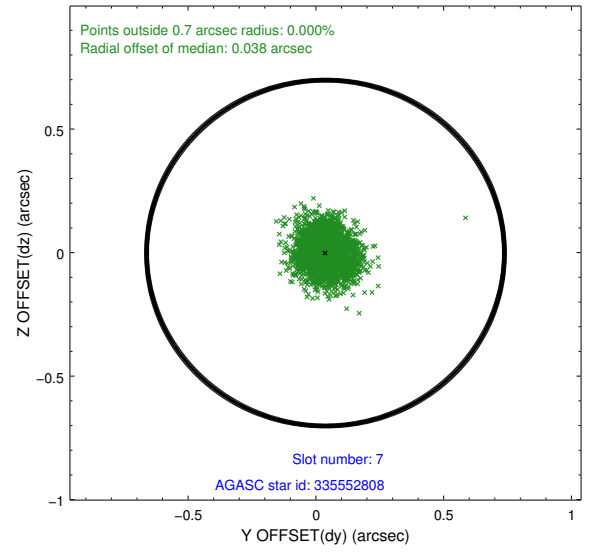
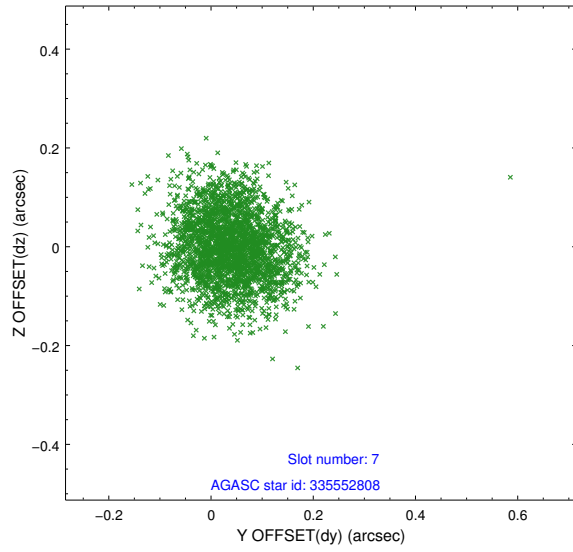
2.4.3 Slot 5



2.4.4 Slot 6

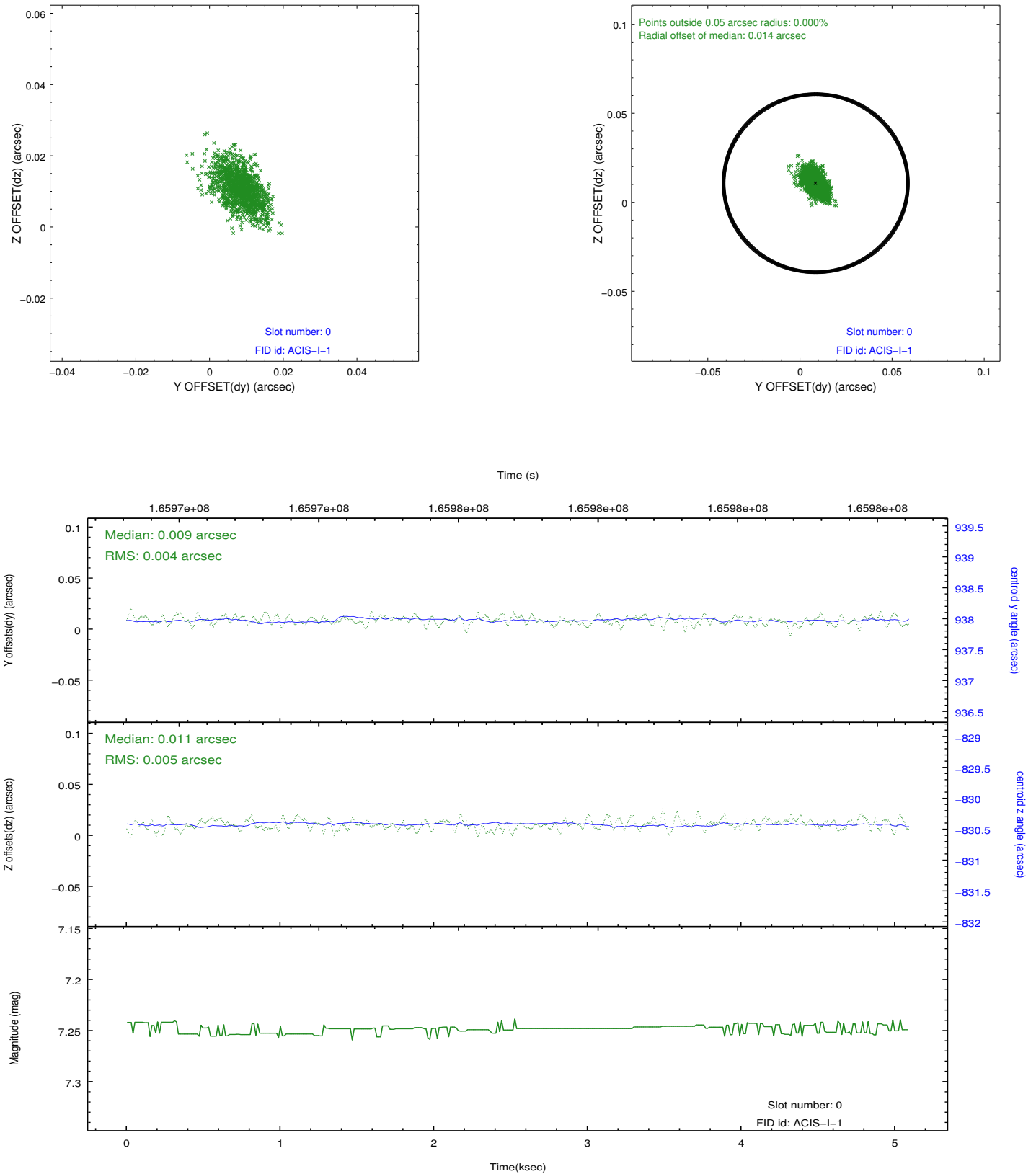


2.4.5 Slot 7

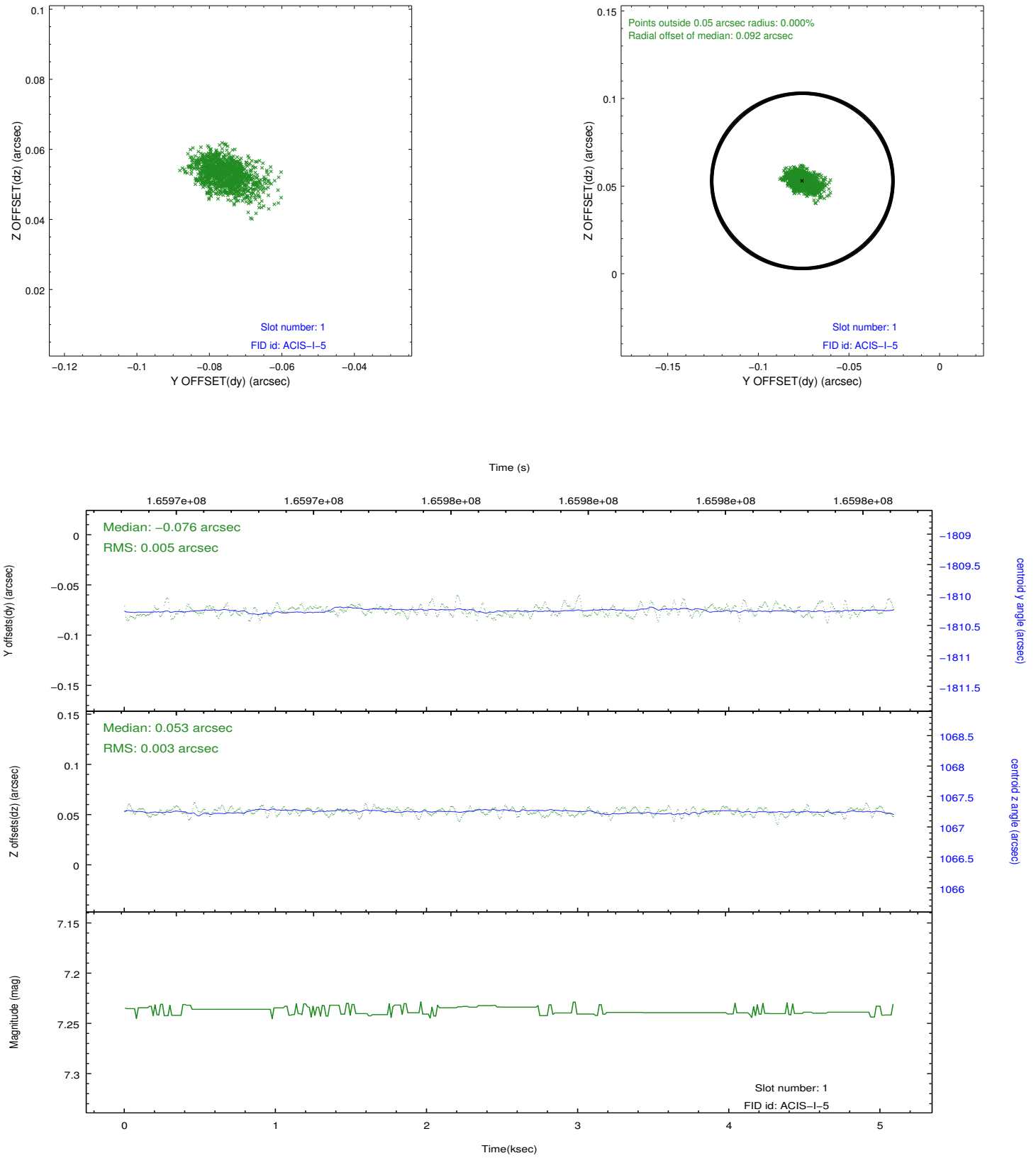


2.5 FID Slots

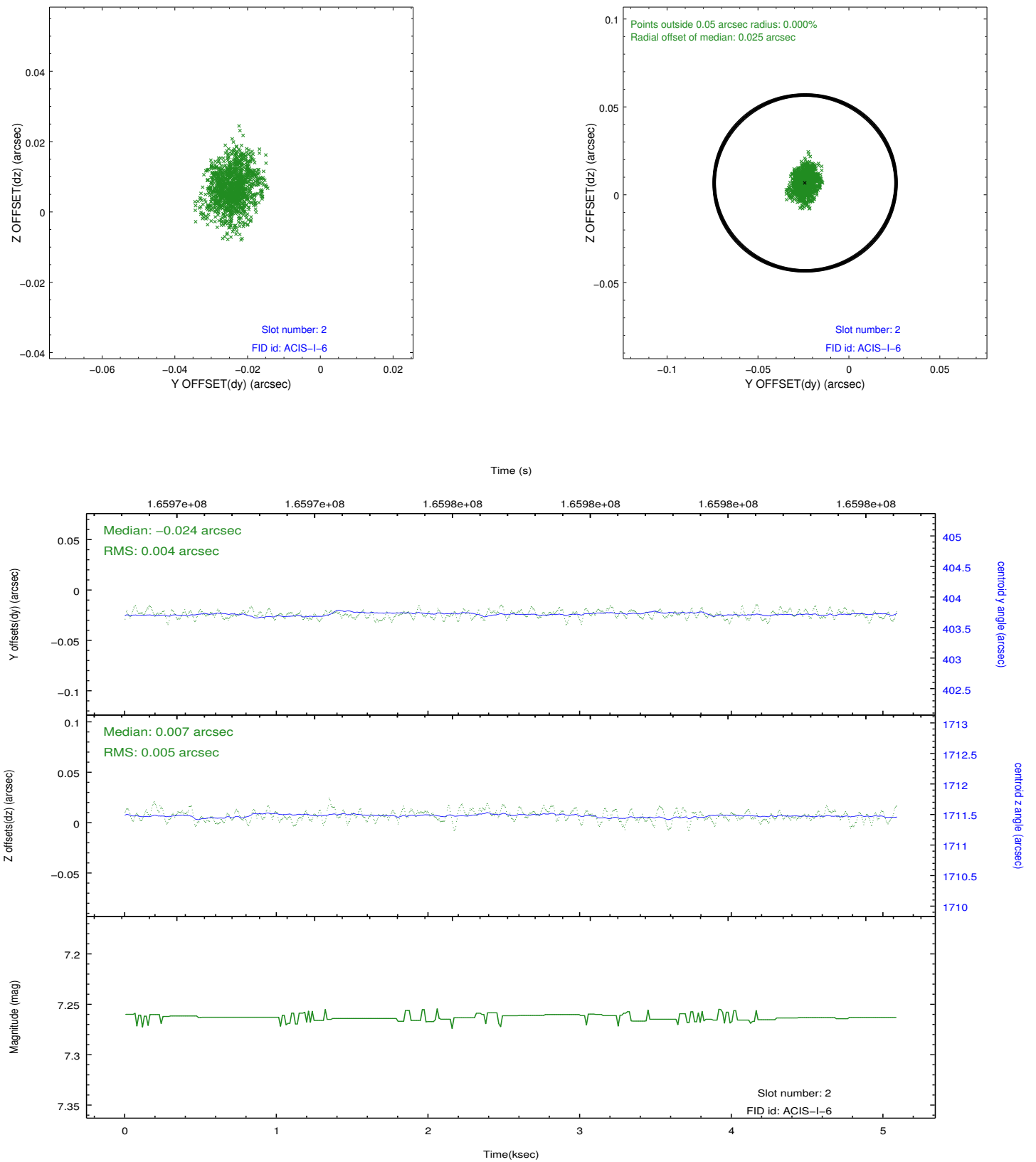
2.5.1 Slot 0



2.5.2 Slot 1



2.5.3 Slot 2



A Summary

A.1 Status

V&V Scientist	Jen Lauer
V&V Date (YYYY-MM-DD)	2012.11.13
V&V Edition	1
V&V Disposition and Status	OK
V&V Charge Time	4.671

A.2 Comments