

V&V Reference Report

L2 ASCDS Version : 7.6.9

Observation 3496 - L2 Version 001
Chandra X-Ray Center

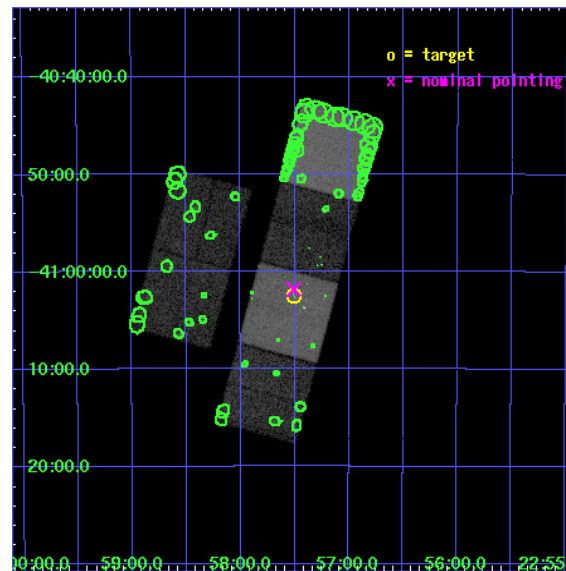
L2 Processing Date : Sep 19 2006

Contents

1	Front	2
2	OBI	3
2.1	OBI	3
2.1.1	Images	3
2.1.2	Bias	3
2.1.3	Parameters	4
2.1.4	Events	4
2.2	Compared Parameters	5
2.3	Aspect	6
2.4	Star Slots	9
2.4.1	Slot 3	9
2.4.2	Slot 4	10
2.4.3	Slot 5	11
2.4.4	Slot 6	12
2.4.5	Slot 7	13
2.5	FID Slots	14
2.5.1	Slot 0	14
2.5.2	Slot 1	15
2.5.3	Slot 2	16
3	Point Sources	17
A	Summary	18
A.1	Status	18
A.2	Comments	18

1 Front

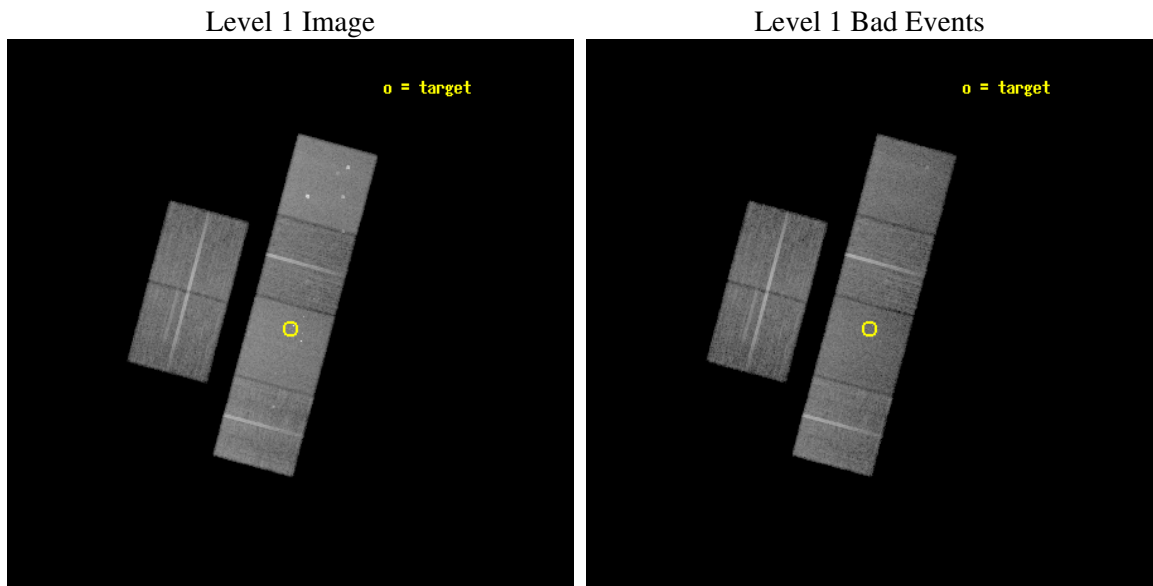
seq_num	500298
obs_id	3496
title	SN2001IG: DETECTING A MASS LOSS PHASE?
observer	Dr. Eric Schlegel
object	SN2001IG
dtcycle	0
cycle	P
ra_targ	344.377917
dec_targ	-41.040278
ra_nom	344.3768192968
dec_nom	-41.030636627922
roll_nom	105.03408727713
revision	2
ontime	24188.79990989
livetime	23882.506760684
ontime2	24188.79990989
ontime3	24188.79990989
ontime5	24188.79990989
ontime6	24188.79990989
ontime7	24188.79990989
ontime8	24188.79990989
l2events	227622



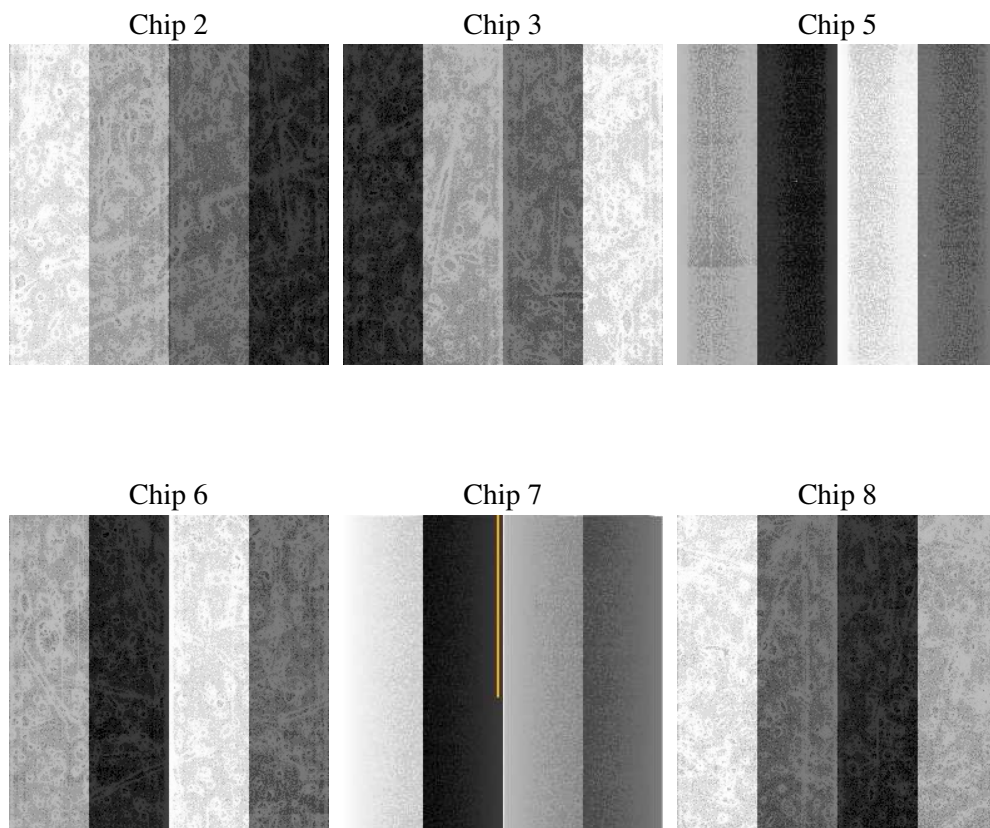
2 OBI

2.1 OBI

2.1.1 Images



2.1.2 Bias



2.1.3 Parameters

obi_num	0
ascdsver	7.6.9
caldsver	3.2.3
date	2006-09-19T09:37:58
revision	2

sched_exp_time	24000.000000
ontime	24294.549473703
ontime2	24294.549473703
ontime3	24294.549473703
ontime5	24294.549473703
ontime6	24294.549473703
ontime7	24294.549473703
ontime8	24294.549473703
l1events	1051806

2.1.4 Events

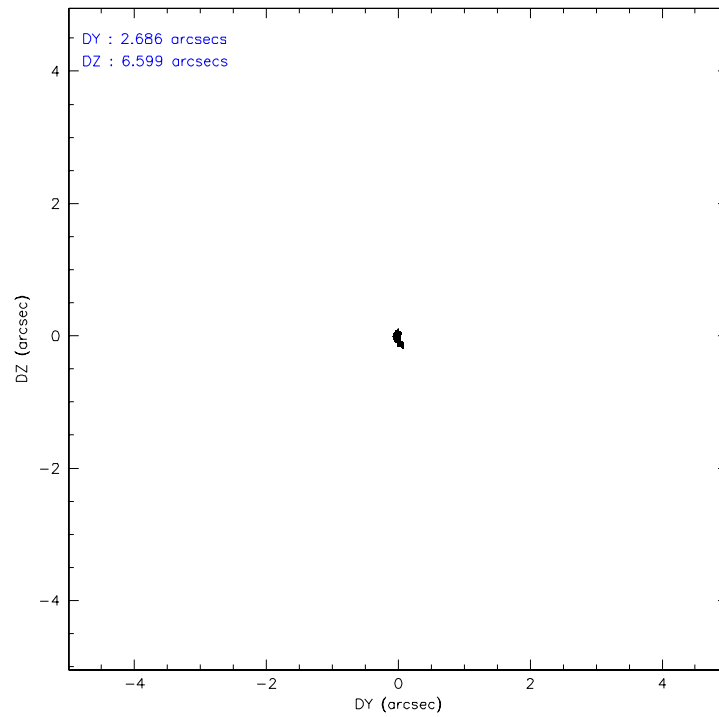
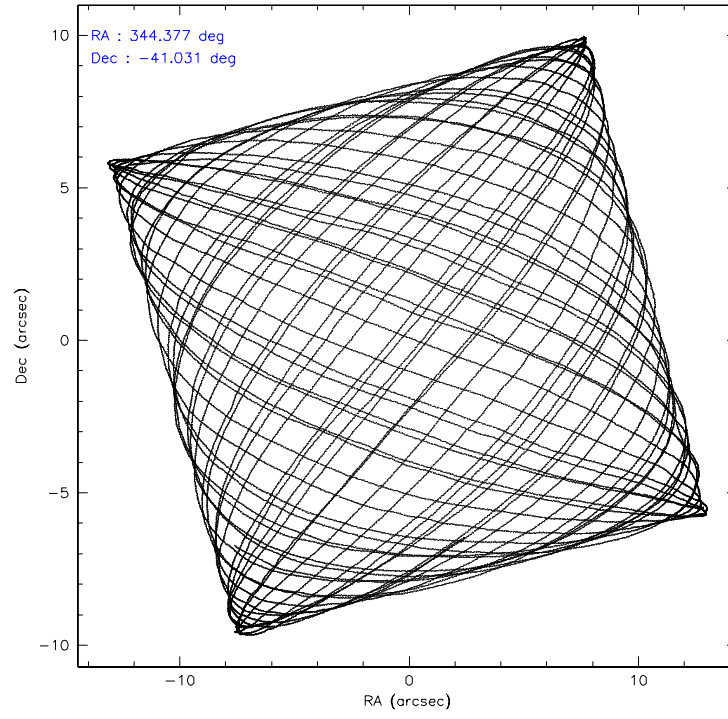
	ccd 2	ccd 3	ccd 5	ccd 6	ccd 7	ccd 8
level 1 events	150464	141875	218139	152715	200513	188100
rejected events	133375	124923	121918	135293	122141	149895
rejected %	88%	88%	55%	88%	60%	79%

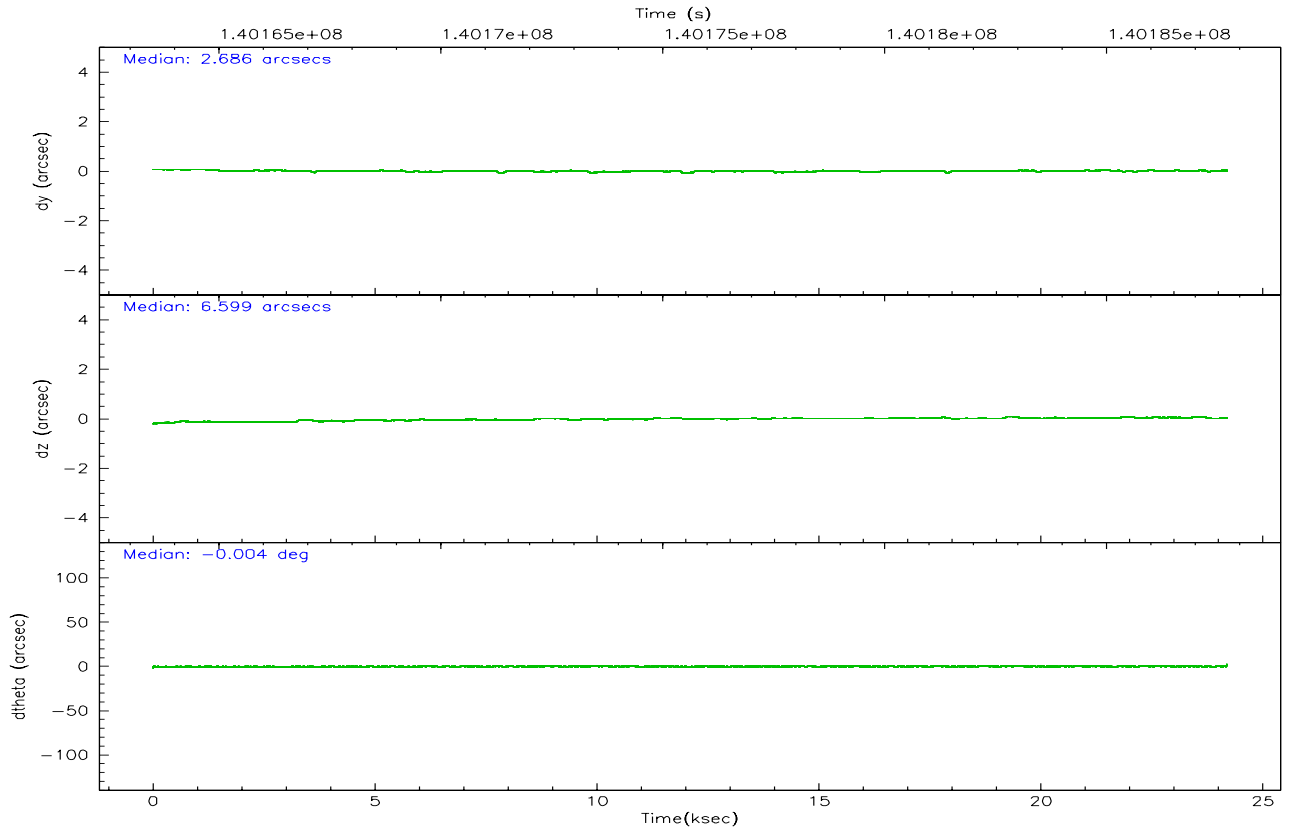
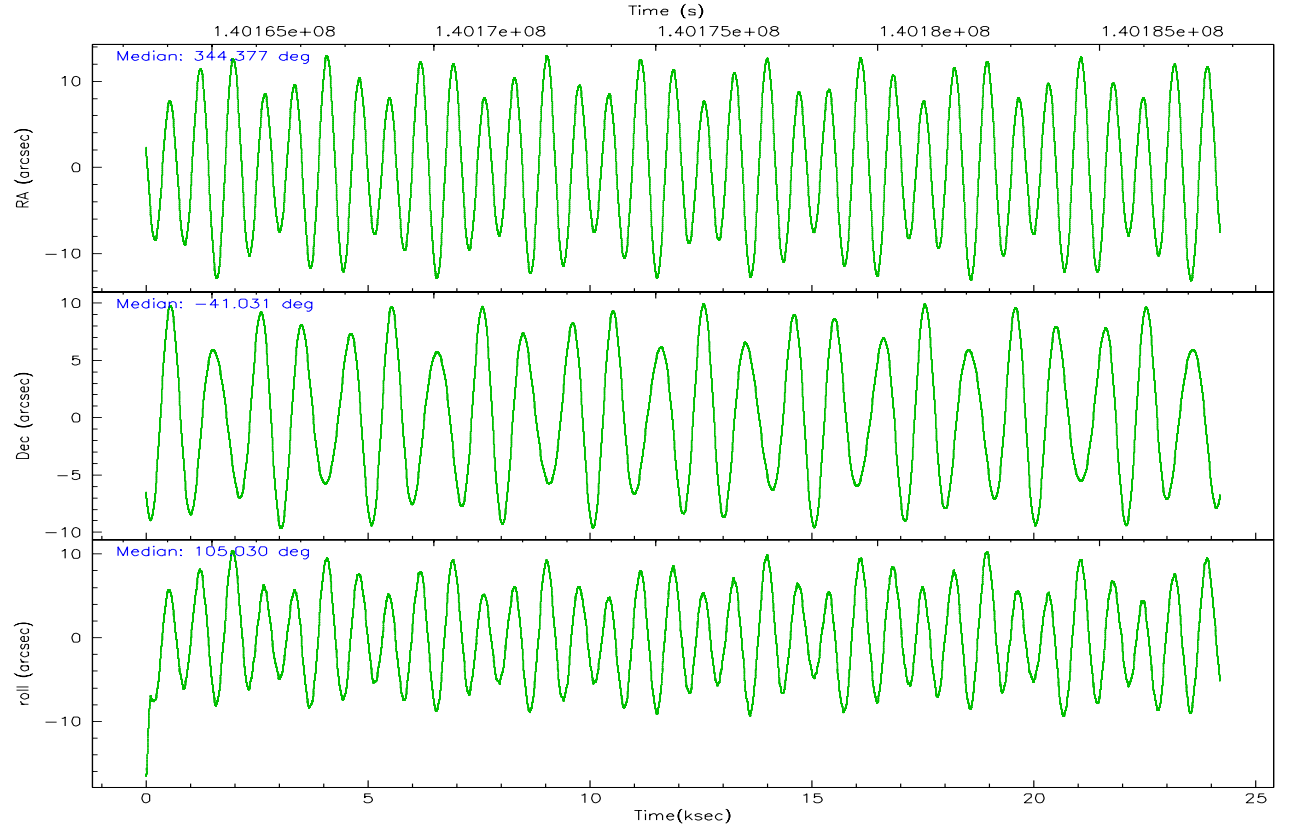
	ccd 2	ccd 3	ccd 5	ccd 6	ccd 7	ccd 8
grade 0 events	7239	7270	9057	7112	5781	12213
	4%	5%	4%	4%	2%	6%
grade 1 events	64	66	197	67	132	88
	0%	0%	0%	0%	0%	0%
grade 2 events	3793	3445	29342	3452	19443	8441
	2%	2%	13%	2%	9%	4%
grade 3 events	1591	1615	2145	1739	4188	4007
	1%	1%	0%	1%	2%	2%
grade 4 events	1501	1558	2117	1697	4122	3648
	0%	1%	0%	1%	2%	1%
grade 5 events	5449	5844	10285	6415	13412	8355
	3%	4%	4%	4%	6%	4%
grade 6 events	3024	3134	53997	3499	45178	10072
	2%	2%	24%	2%	22%	5%
grade 7 events	127803	118943	110999	128734	108257	141276
	84%	83%	50%	84%	53%	75%

2.2 Compared Parameters

Parameter	Planned	Actual	Parameter	Planned	Actual
Instrument	ACIS	ACIS	Obspar format version number	6	6
Detector	ACIS-235678	ACIS-235678	Obspar file type	PREDICTED	ACTUAL
Grating	NONE	NONE	Obspar update status	NONE	UPDATED
Data mode	FAINT	FAINT	Number of optional ACIS chips dropped	0	0
Observation mode	POINTING	POINTING	On-chip summing requested	N	N
Pointing RA	344.402700	344.3768192967972	Subarray requested	NONE	NONE
Pointing Dec	-41.049619	-41.03063662792169	Alternating exposures requested	N	N
Pointing Roll	104.894449	105.0340872771316	Primary exposure time	0.000000	3.2
SIM focus pos (mm)	-0.684267	-0.6828225247311905			
SIM defocus (mm)	0	0.001444936568705701			
SIM translation stage pos (mm)	-190.132523	-190.1425803651734			
SIM translation stage offset (mm)	0	0.01005778216563158			
Observation start time	140163716.184000	140162590.7266			
Observation start date	2002-06-11T06:20:52	2002-06-11T06:03:10			
Observation end time	140187716.184000	140188156.79015			
Observation end date	2002-06-11T13:00:52	2002-06-11T13:09:16			
Read mode	TIMED	TIMED			

2.3 Aspect



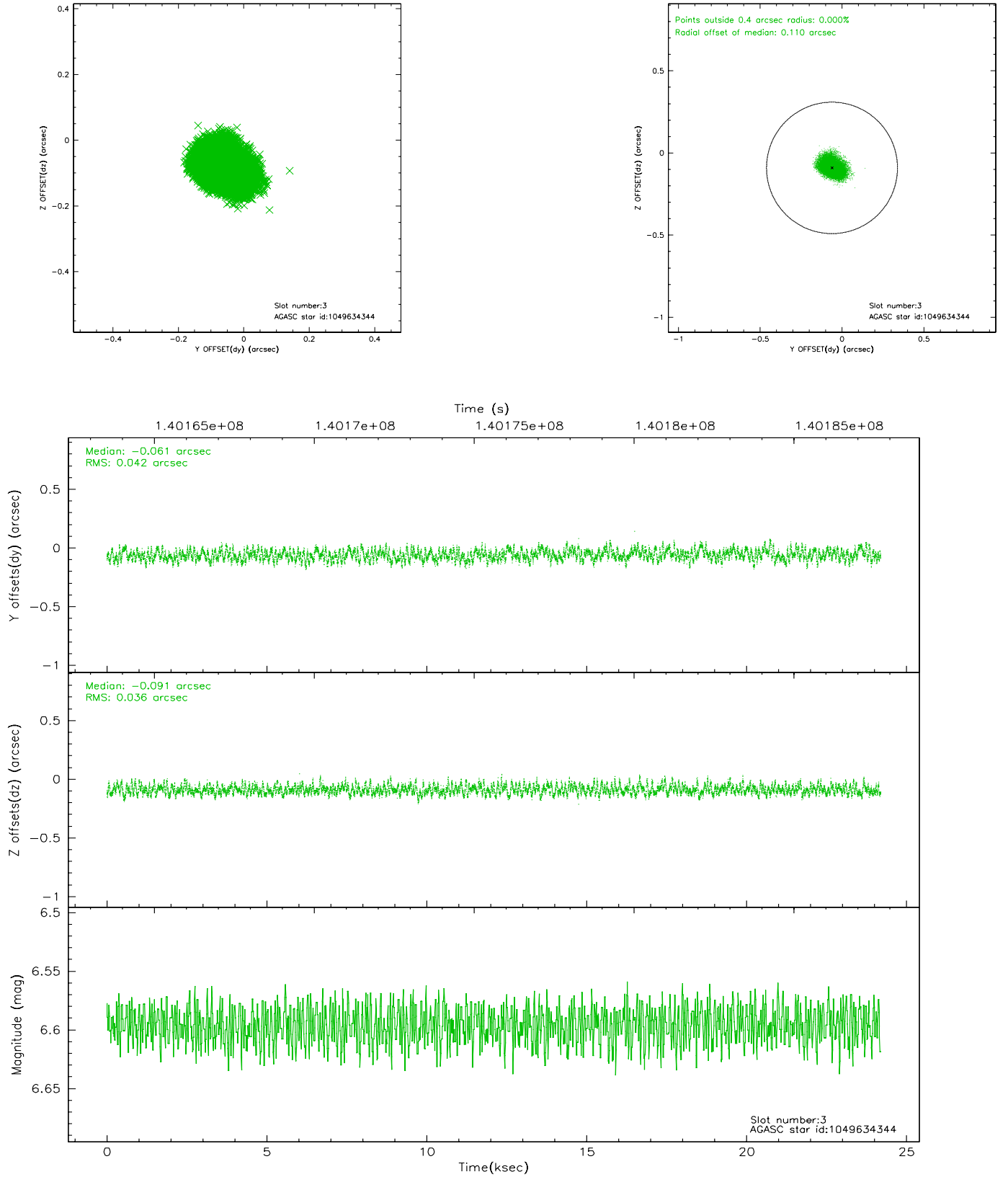


Slot Statistics

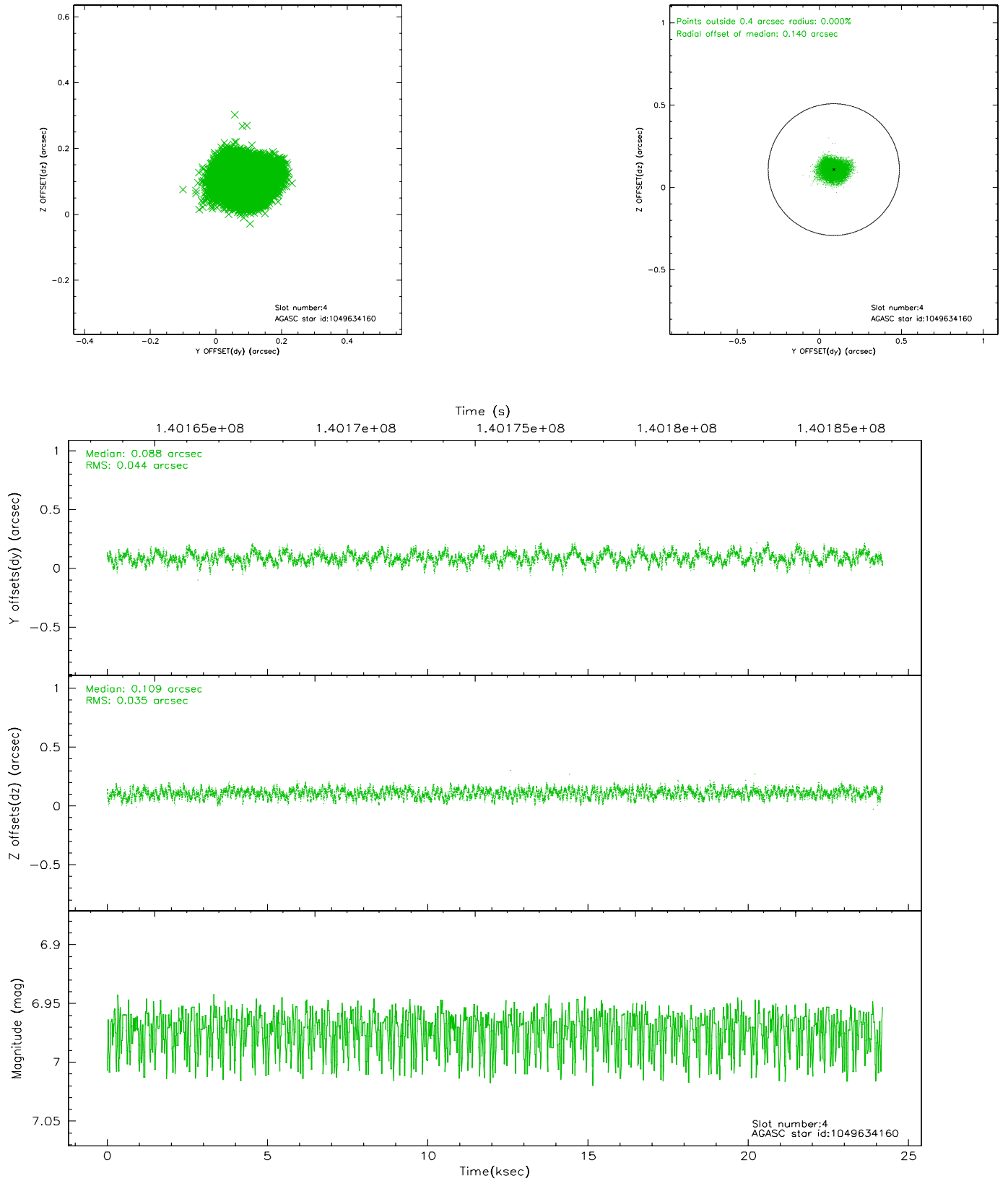
slot	status	id	mag	n_pts	med_dy	med_dz	dr1	dr2	ra	dec	mean_y	mean_z
0	FID	ACIS-S-3	7.35	5901	-0.108	-0.033	0.007	0.012	0.000000	0.000000	57.76	-1856.78
1	FID	ACIS-S-4	7.20	5901	-0.019	0.072	0.006	0.009	0.000000	0.000000	2158.02	180.71
2	FID	ACIS-S-5	7.24	5902	0.099	-0.029	0.006	0.010	0.000000	0.000000	-1807.90	174.46
3	GUIDE	1049634344	6.60	11804	-0.061	-0.091	0.060	0.094	343.976575	-41.096753	130.73	1161.47
4	GUIDE	1049634160	6.97	11804	0.088	0.109	0.062	0.095	345.100702	-41.151222	-846.61	-1732.10
5	GUIDE	1049632784	8.35	11803	-0.300	-0.122	0.051	0.082	343.716437	-40.670072	1794.94	1461.61
6	GUIDE	1049634896	8.18	11803	0.265	0.230	0.052	0.083	345.162042	-41.514554	-2151.44	-1545.28
7	GUIDE	1049635176	10.17	11728	0.003	-0.126	0.136	0.223	343.420981	-40.689272	1928.06	2260.22

2.4 Star Slots

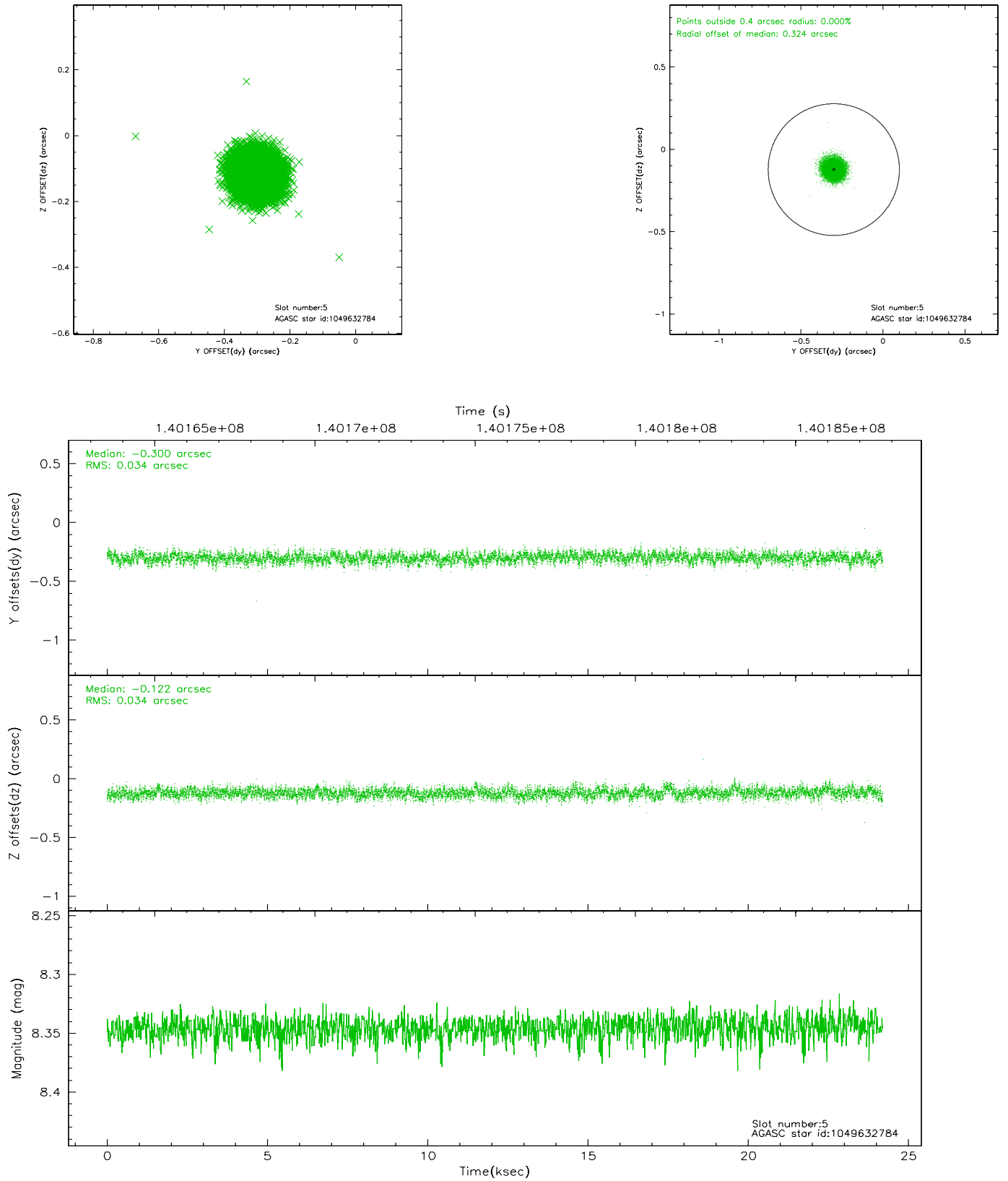
2.4.1 Slot 3



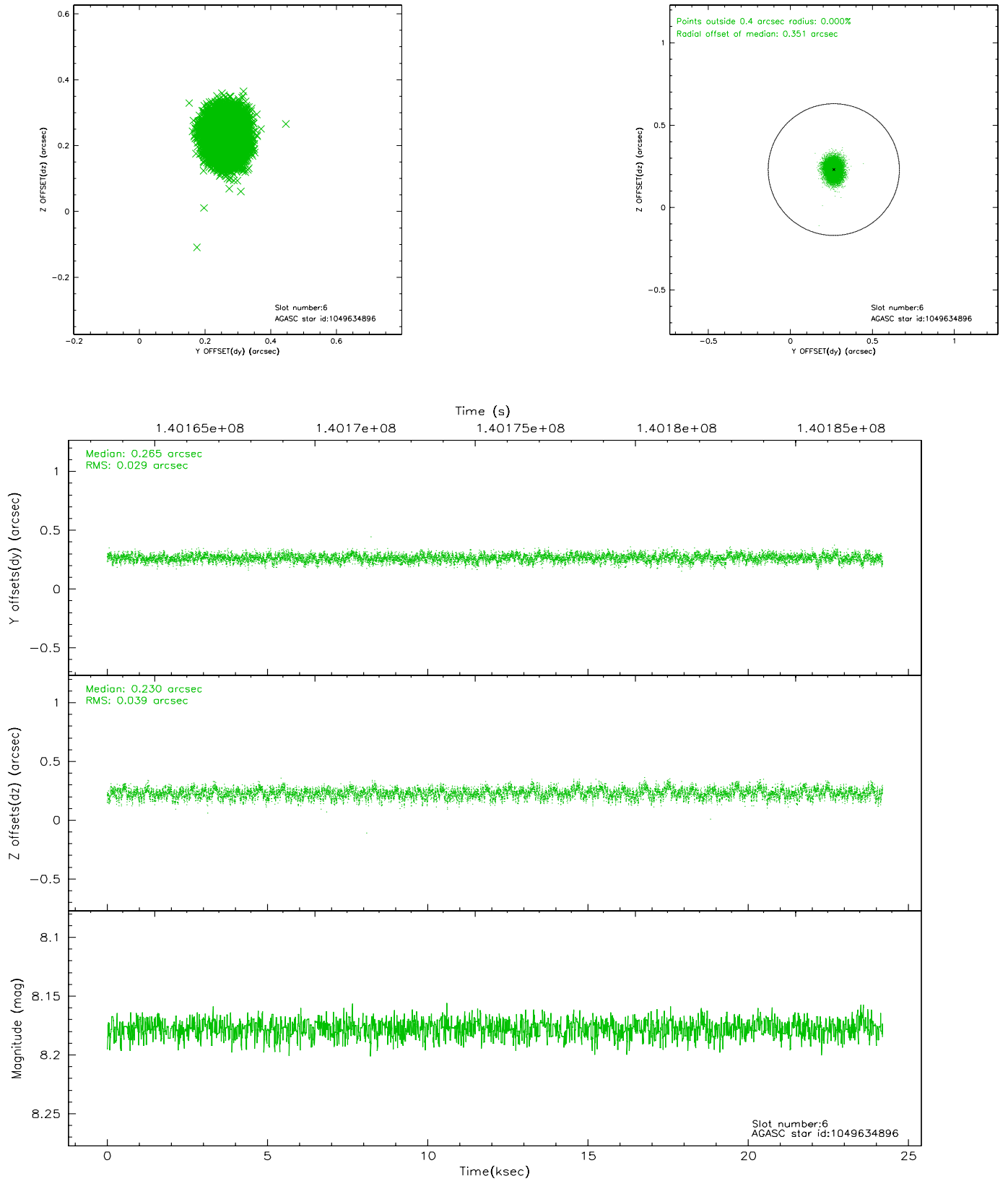
2.4.2 Slot 4



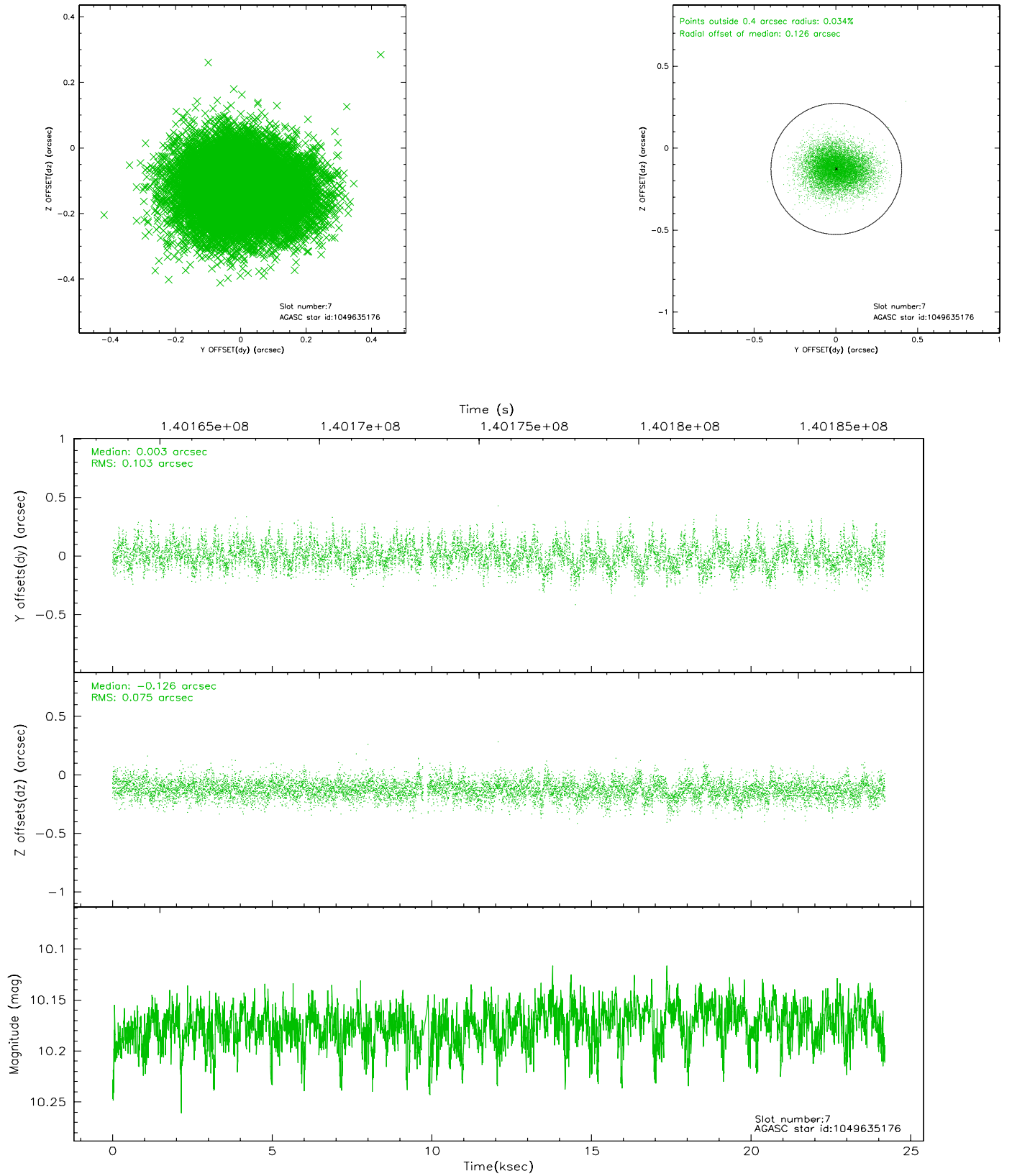
2.4.3 Slot 5



2.4.4 Slot 6

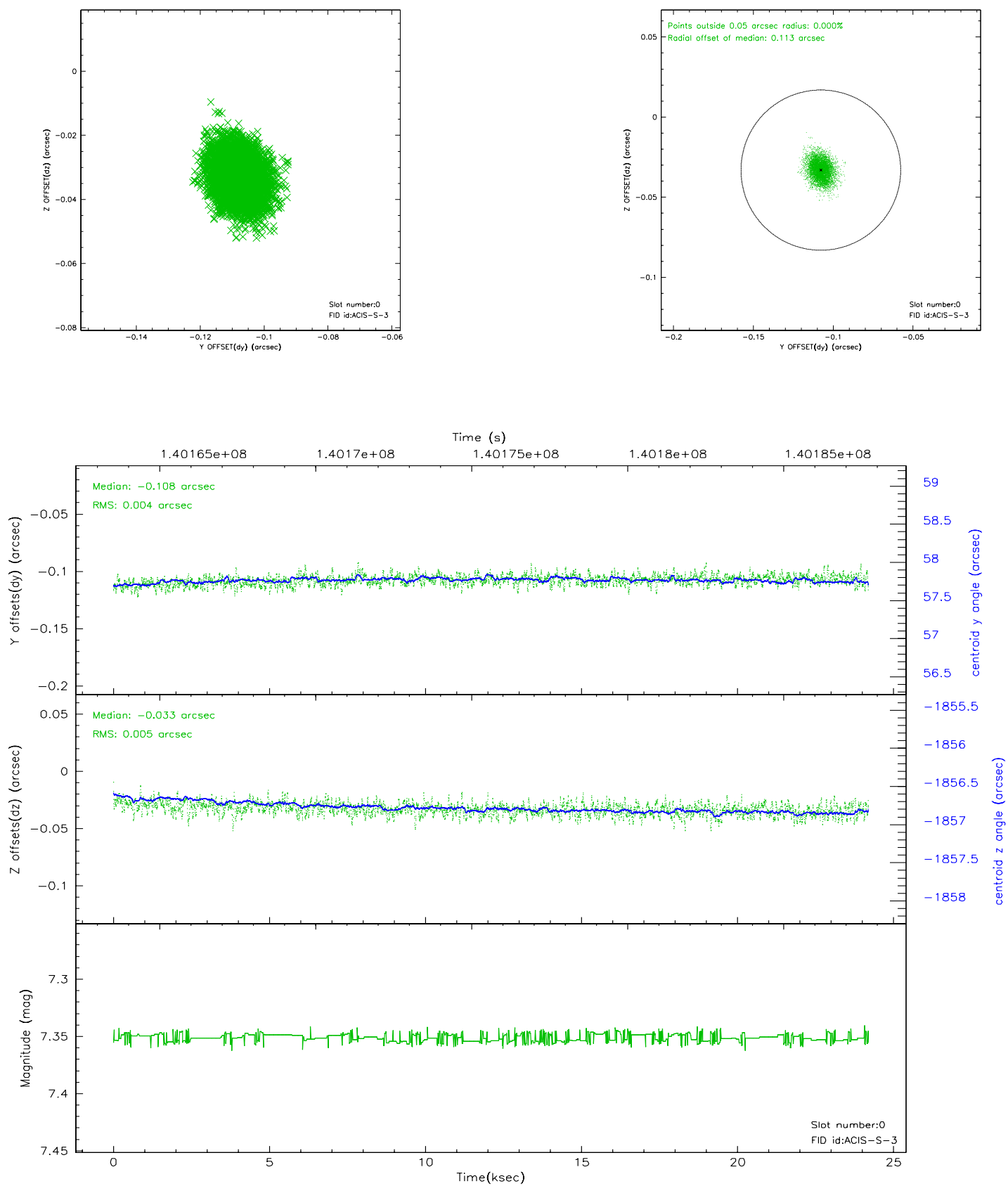


2.4.5 Slot 7

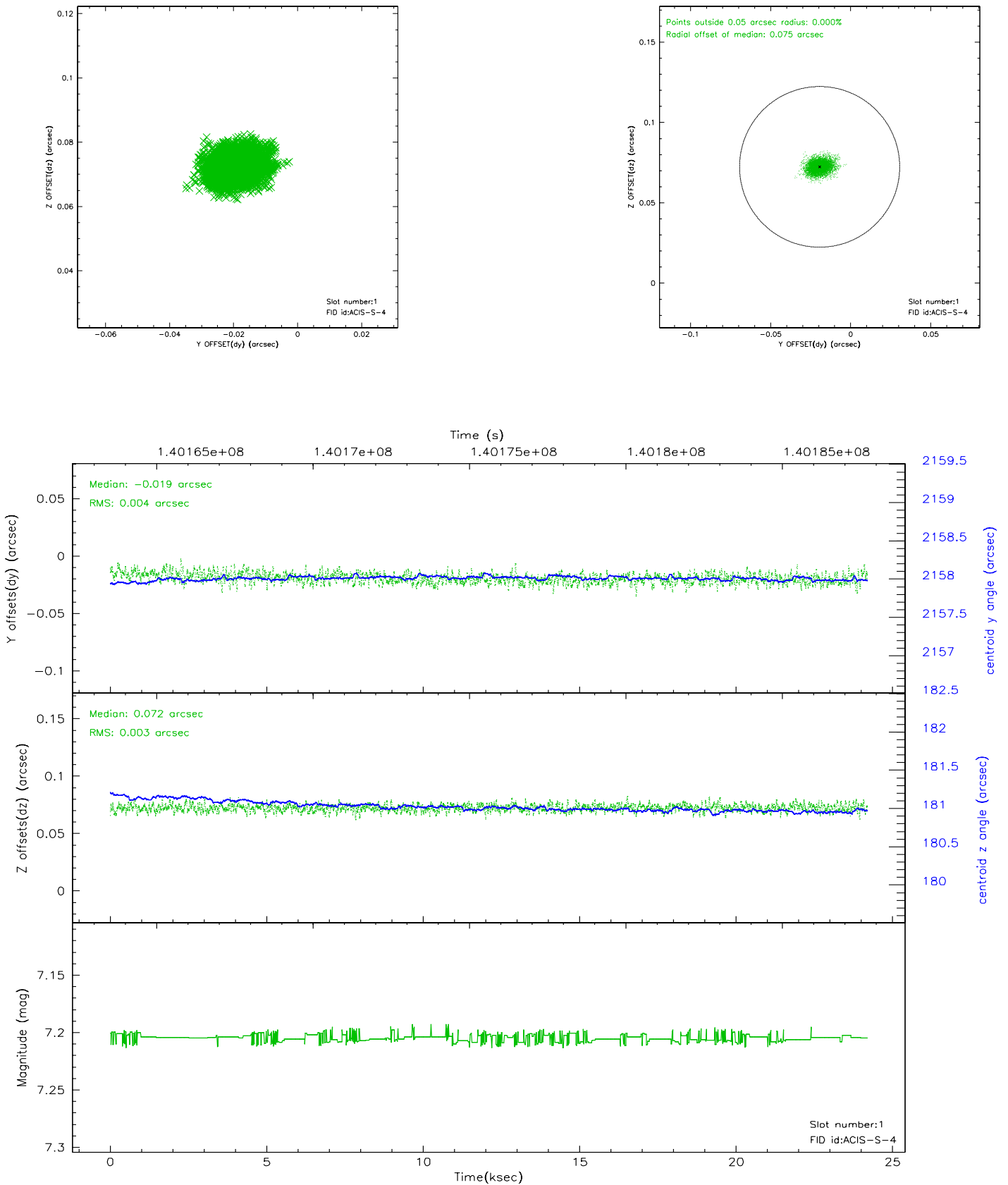


2.5 FID Slots

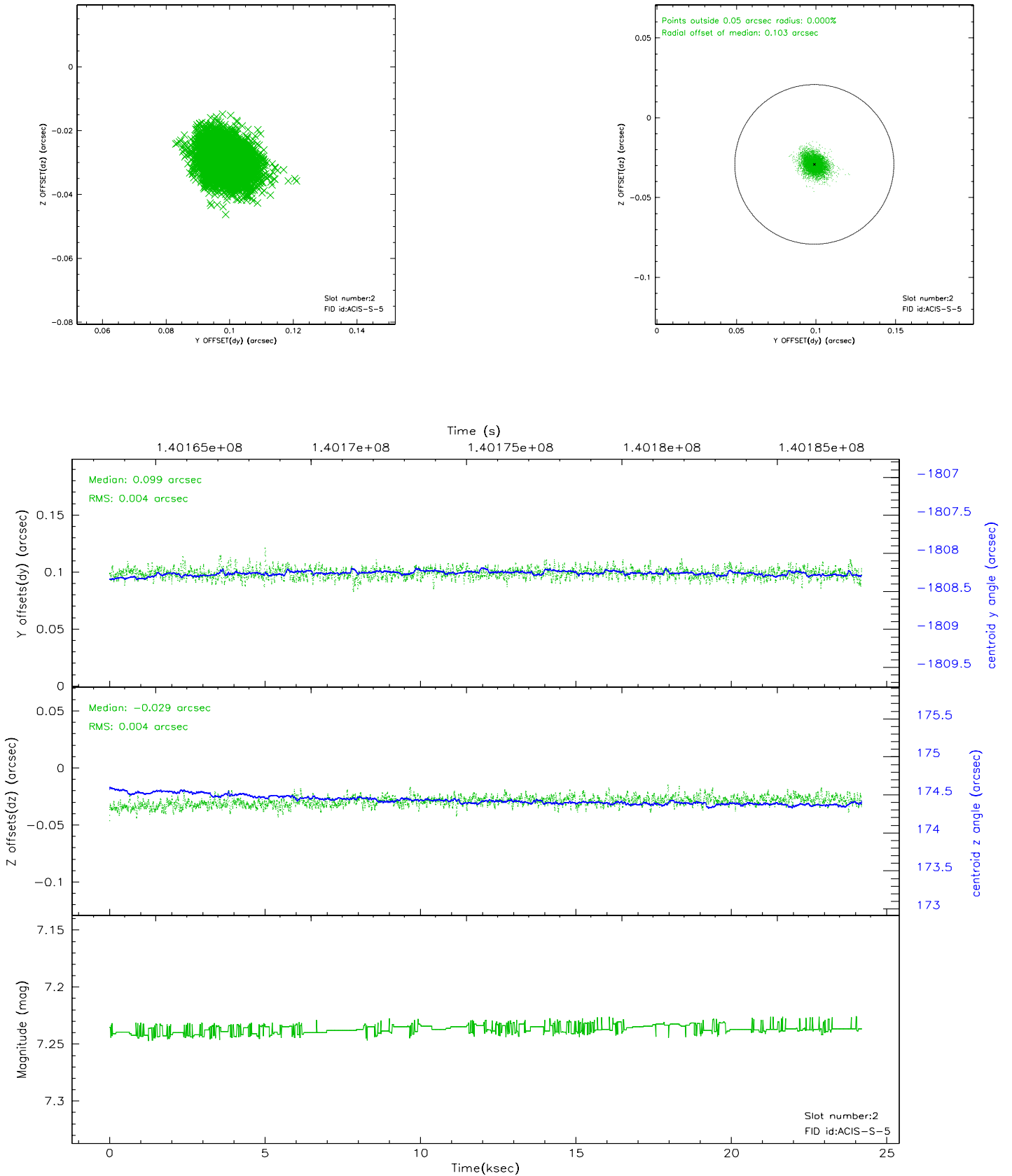
2.5.1 Slot 0



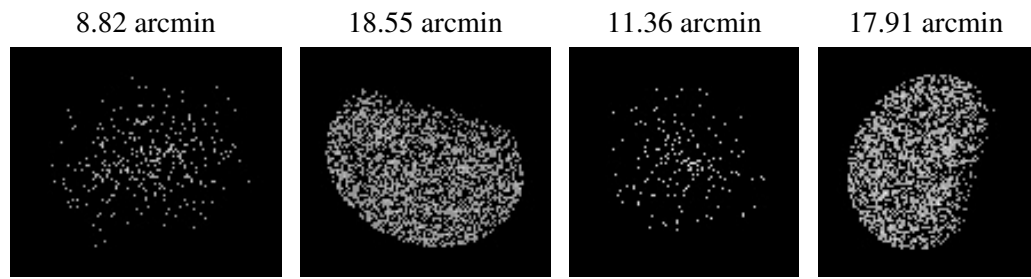
2.5.2 Slot 1



2.5.3 Slot 2



3 Point Sources



A Summary

A.1 Status

V&V Scientist	Jen Lauer
V&V Date (YYYY-MM-DD)	2006.09.19
V&V Edition	1
V&V Disposition and Status	OK
V&V Charge Time	24.188

A.2 Comments

Monitor constraint not met: follows obs3495 by 20 days instead of 22.