

V&V Reference Report

L2 ASCDS Version : 7.6.8.1

Observation 3186 - L2 Version 001
Chandra X-Ray Center

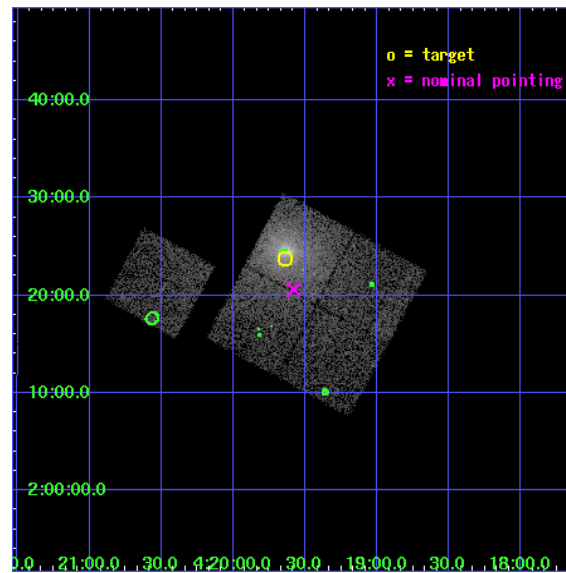
L2 Processing Date : Aug 26 2006

Contents

1	Front	2
2	OBI	3
2.1	OBI	3
2.1.1	Images	3
2.1.2	Bias	3
2.1.3	Parameters	4
2.1.4	Events	4
2.2	Compared Parameters	5
2.3	Aspect	6
2.4	Star Slots	9
2.4.1	Slot 3	9
2.4.2	Slot 4	10
2.4.3	Slot 5	11
2.4.4	Slot 6	12
2.4.5	Slot 7	13
2.5	FID Slots	14
2.5.1	Slot 0	14
2.5.2	Slot 1	15
2.5.3	Slot 2	16
3	Point Sources	17
A	Summary	18
A.1	Status	18
A.2	Comments	18

1 Front

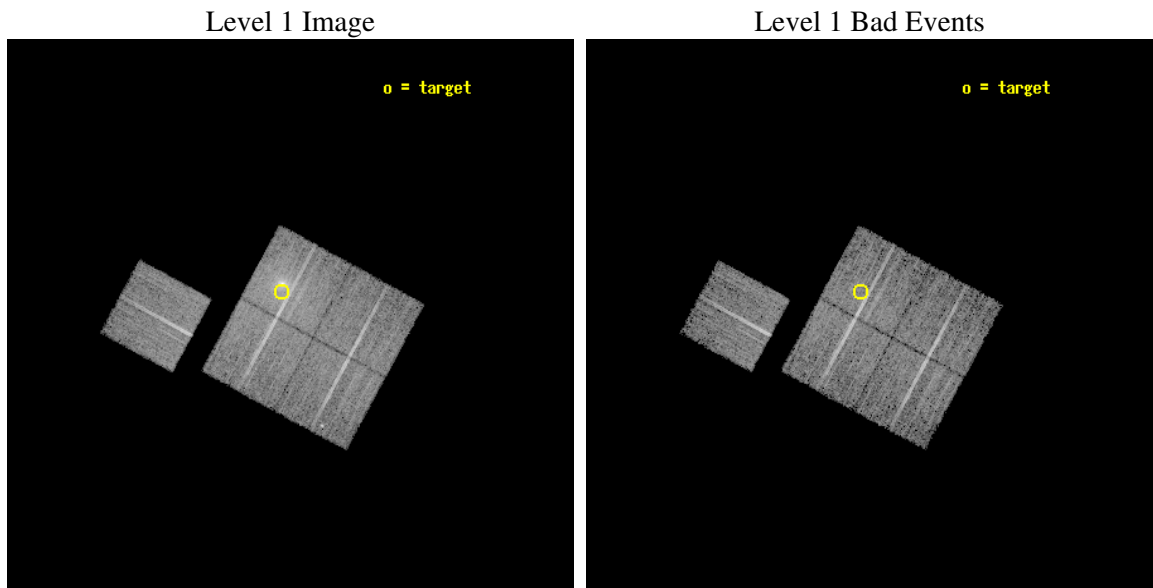
seq_num	800186
obs_id	3186
title	OLEGS OR FOSSIL GROUPS -- STUDYING EVOLVED GALAXY SYSTEMS
observer	Dr. Stephen Murray
object	NGC1550-A
dtcycle	0
cycle	P
ra_targ	64.90938
dec_targ	2.395
ra_nom	64.894745009998
dec_nom	2.3433494370401
roll_nom	298.46104203554
revision	2
ontime	10115.2590103
livetime	9983.0957045851
ontime0	10115.2590103
ontime1	10118.399980545
ontime2	10115.259010285
ontime3	10115.2590103
ontime6	10115.2590103
l2events	48917



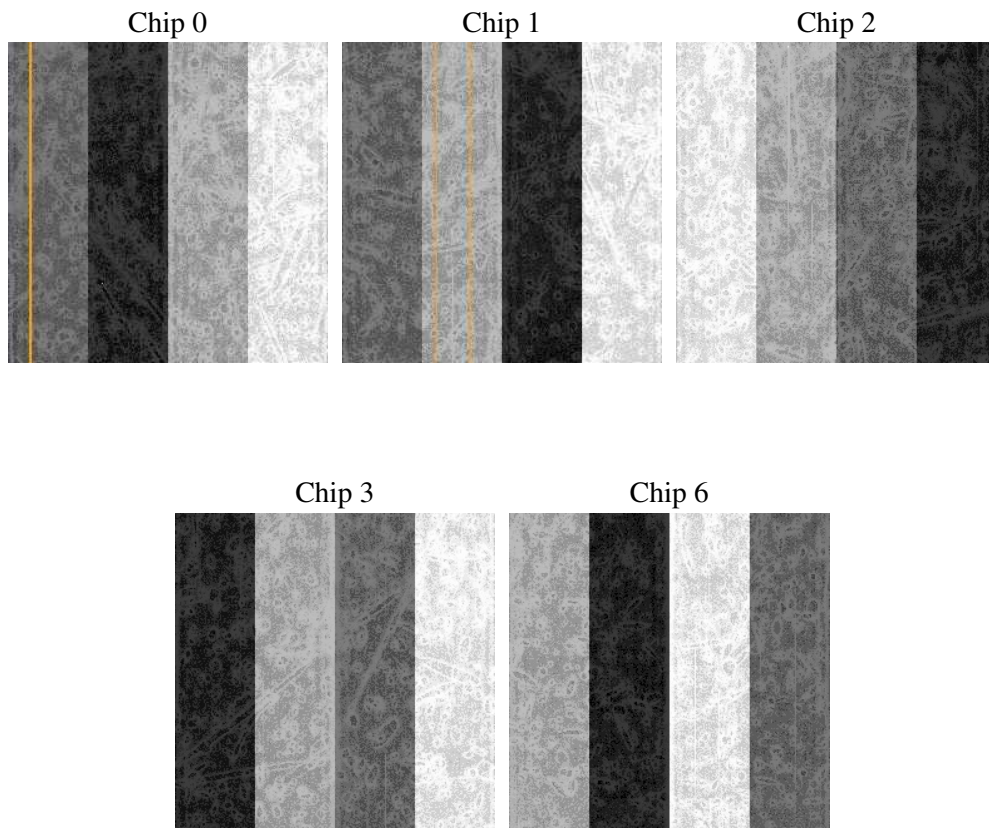
2 OBI

2.1 OBI

2.1.1 Images



2.1.2 Bias



2.1.3 Parameters

obi_num	0
ascdsver	7.6.8.1
caldbver	3.2.3
date	2006-08-26T03:16:07
revision	2

sched_exp_time	10000.000000
ontime	10126.591607153
ontime0	10126.591577232
ontime1	10129.732547477
ontime2	10126.591607139
ontime3	10126.591607153
ontime6	10126.591607153
l1events	302402

2.1.4 Events

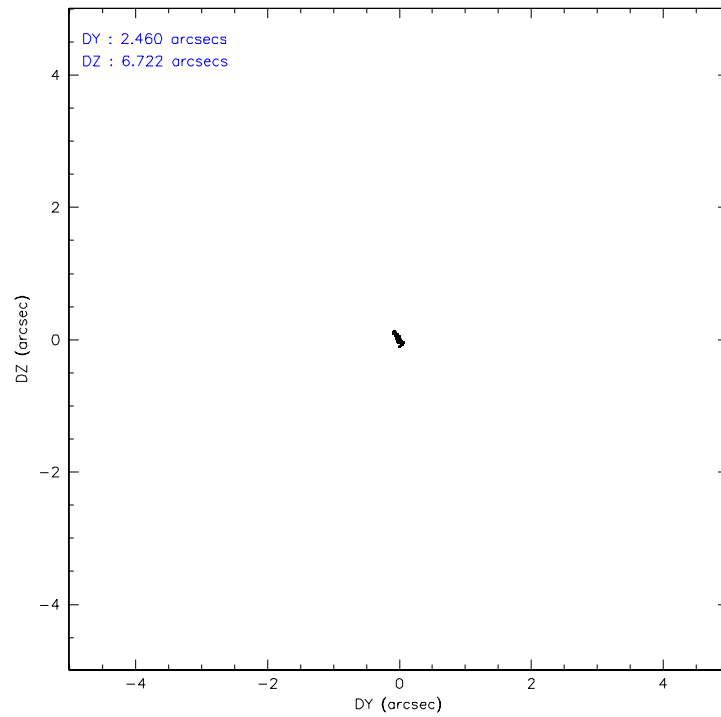
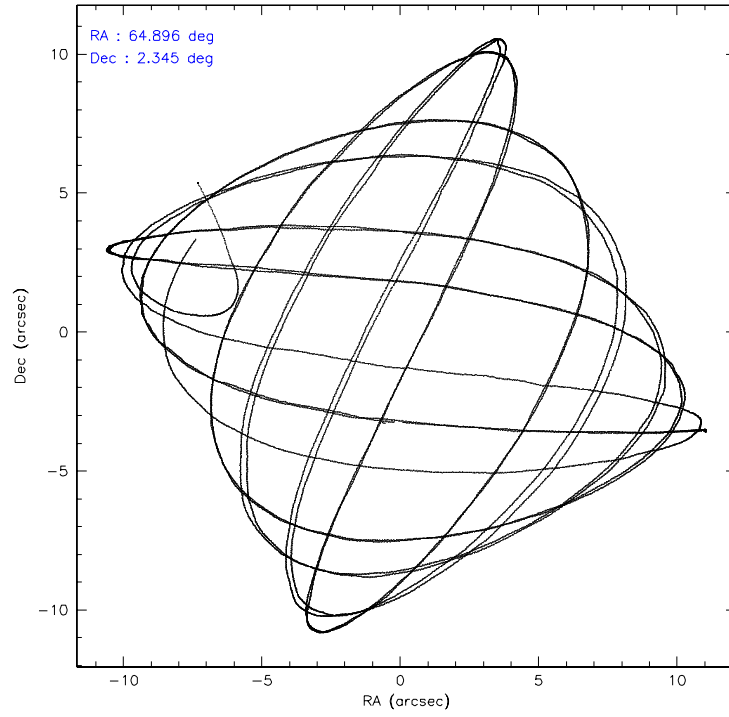
	ccd 0	ccd 1	ccd 2	ccd 3	ccd 6
level 1 events	53387	52332	62036	77691	56956
rejected events	46616	44537	53565	52559	50378
rejected %	87%	85%	86%	67%	88%

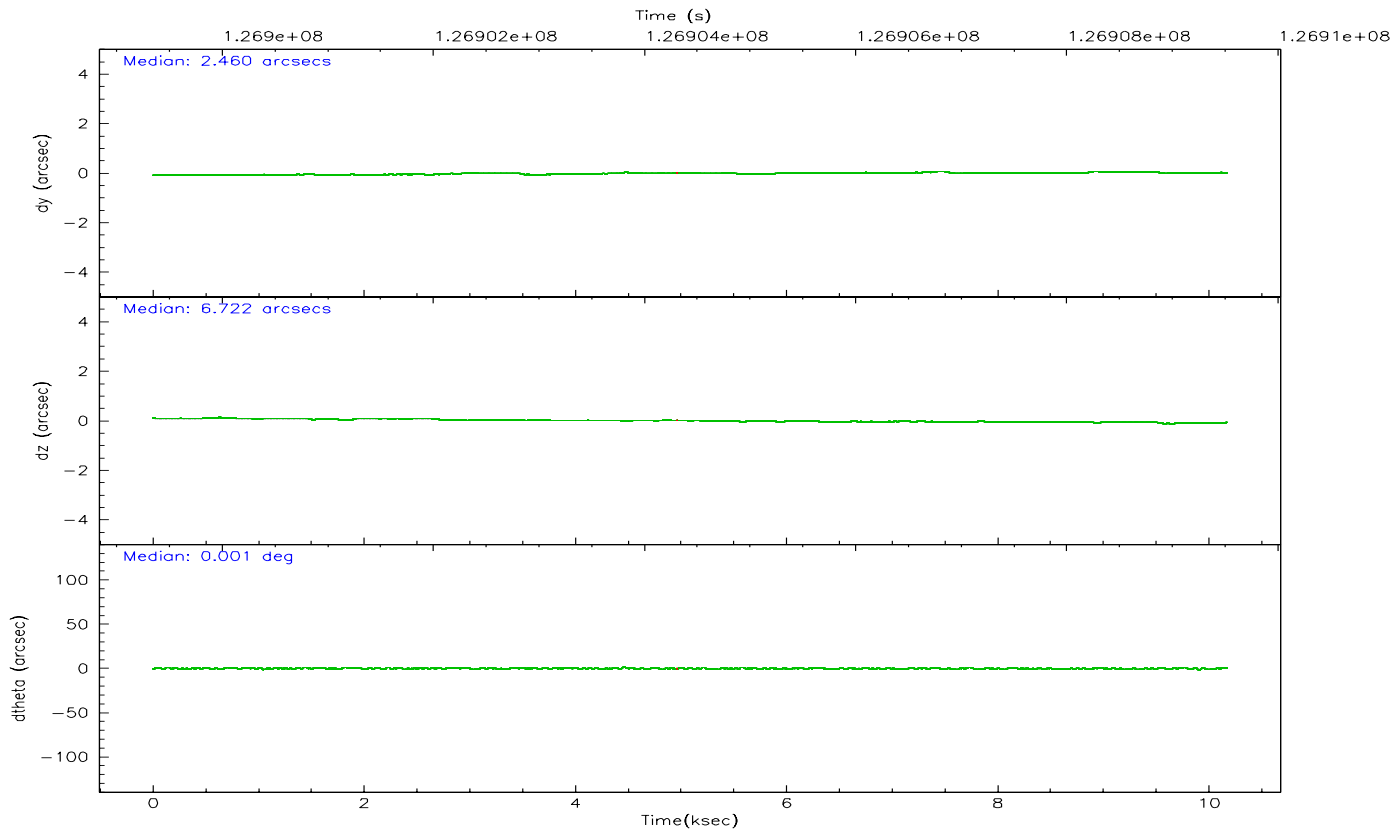
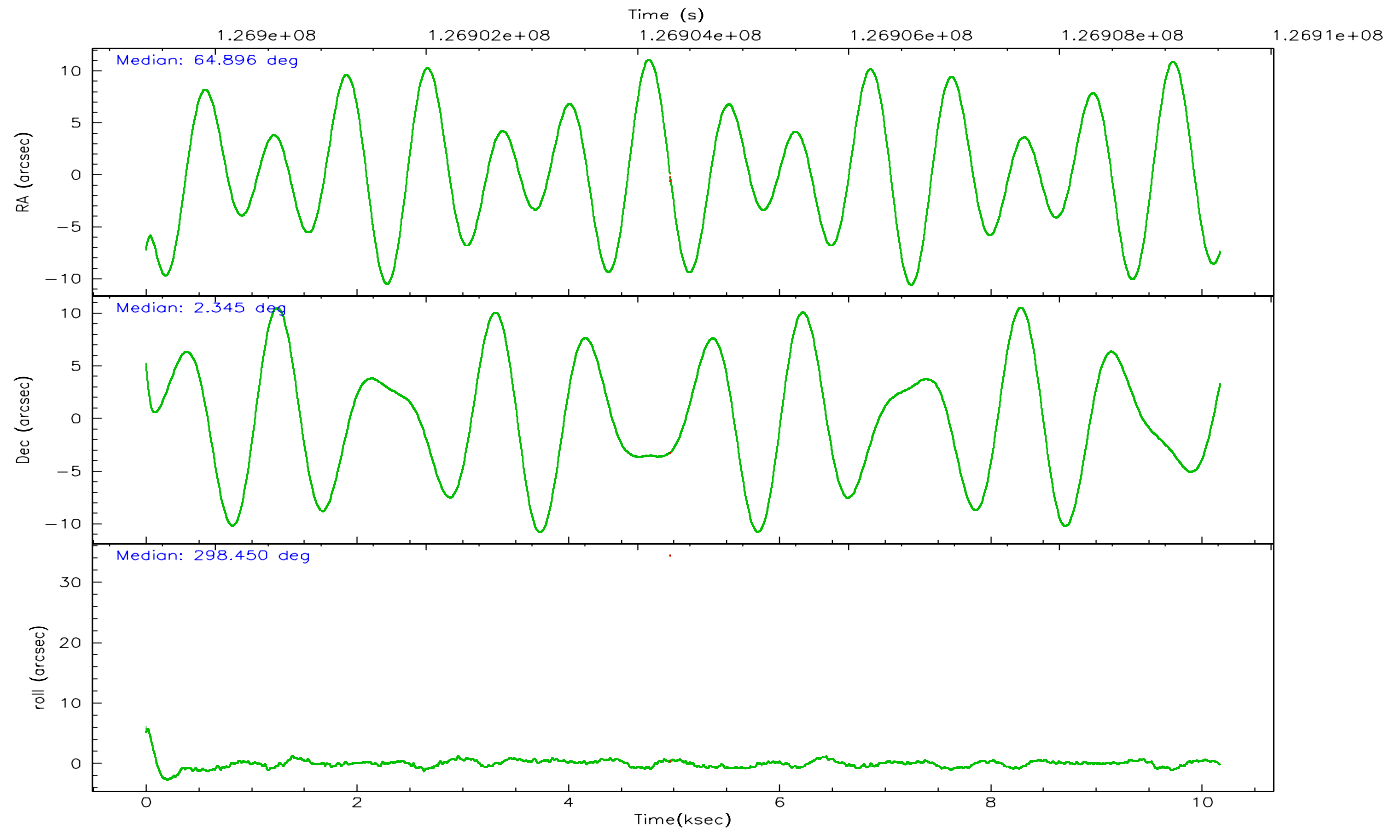
	ccd 0	ccd 1	ccd 2	ccd 3	ccd 6
grade 0 events	2988	3744	4510	18940	2777
	5%	7%	7%	24%	4%
grade 1 events	25	30	40	98	41
	0%	0%	0%	0%	0%
grade 2 events	1391	1425	1552	2816	1258
	2%	2%	2%	3%	2%
grade 3 events	702	737	658	1018	681
	1%	1%	1%	1%	1%
grade 4 events	611	683	691	1030	641
	1%	1%	1%	1%	1%
grade 5 events	1812	1924	1573	2069	2012
	3%	3%	2%	2%	3%
grade 6 events	1085	1212	1068	1357	1224
	2%	2%	1%	1%	2%
grade 7 events	44773	42577	51944	50363	48322
	83%	81%	83%	64%	84%

2.2 Compared Parameters

Parameter	Planned	Actual	Parameter	Planned	Actual
Instrument	ACIS	ACIS	Obspar format version number	6	6
Detector	ACIS-01236	ACIS-01236	Obspar file type	PREDICTED	ACTUAL
Grating	NONE	NONE	Obspar update status	NONE	UPDATED
Data mode	VFAINT	VFAINT	On-chip summing requested	N	N
Observation mode	POINTING	POINTING	Subarray requested	NONE	NONE
Pointing RA	64.872812	64.89474500999789	Alternating exposures requested	N	N
Pointing Dec	2.359475	2.343349437040088	Primary exposure time	0.000000	3.1
Pointing Roll	298.251974	298.4610420355383			
SIM focus pos (mm)	-0.782348	-0.7809083437167272			
SIM defocus (mm)	0	0.001439871863259334			
SIM translation stage pos (mm)	-226.592463	-226.5900949765872			
SIM translation stage offset (mm)	-7	-7.002358026342478			
Observation start time	126899517.184000	126898553.08869			
Observation start date	2002-01-08T17:50:53	2002-01-08T17:35:53			
Observation end time	126909517.184000	126909650.76414			
Observation end date	2002-01-08T20:37:33	2002-01-08T20:40:50			
Read mode	TIMED	TIMED			

2.3 Aspect



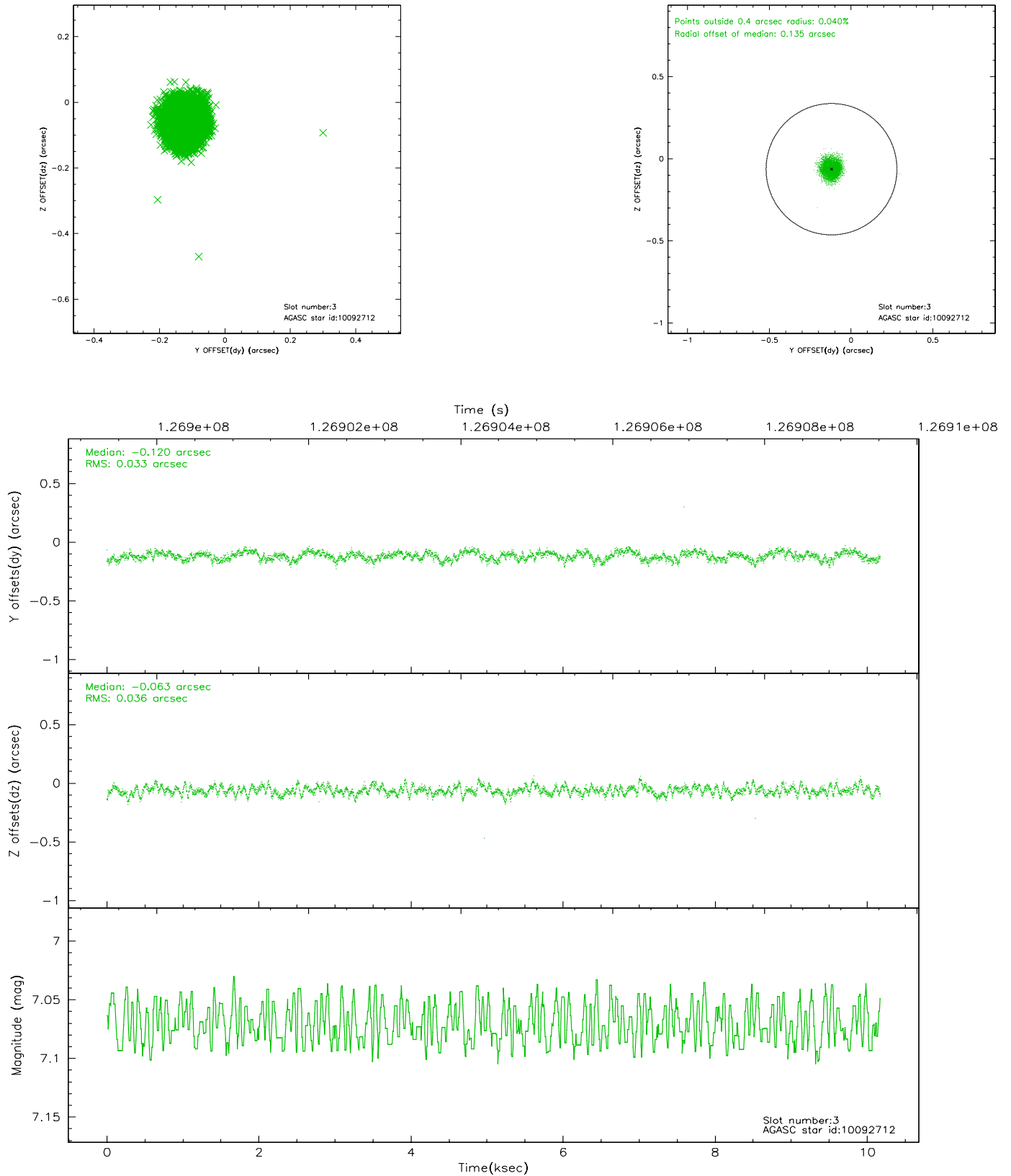


Slot Statistics

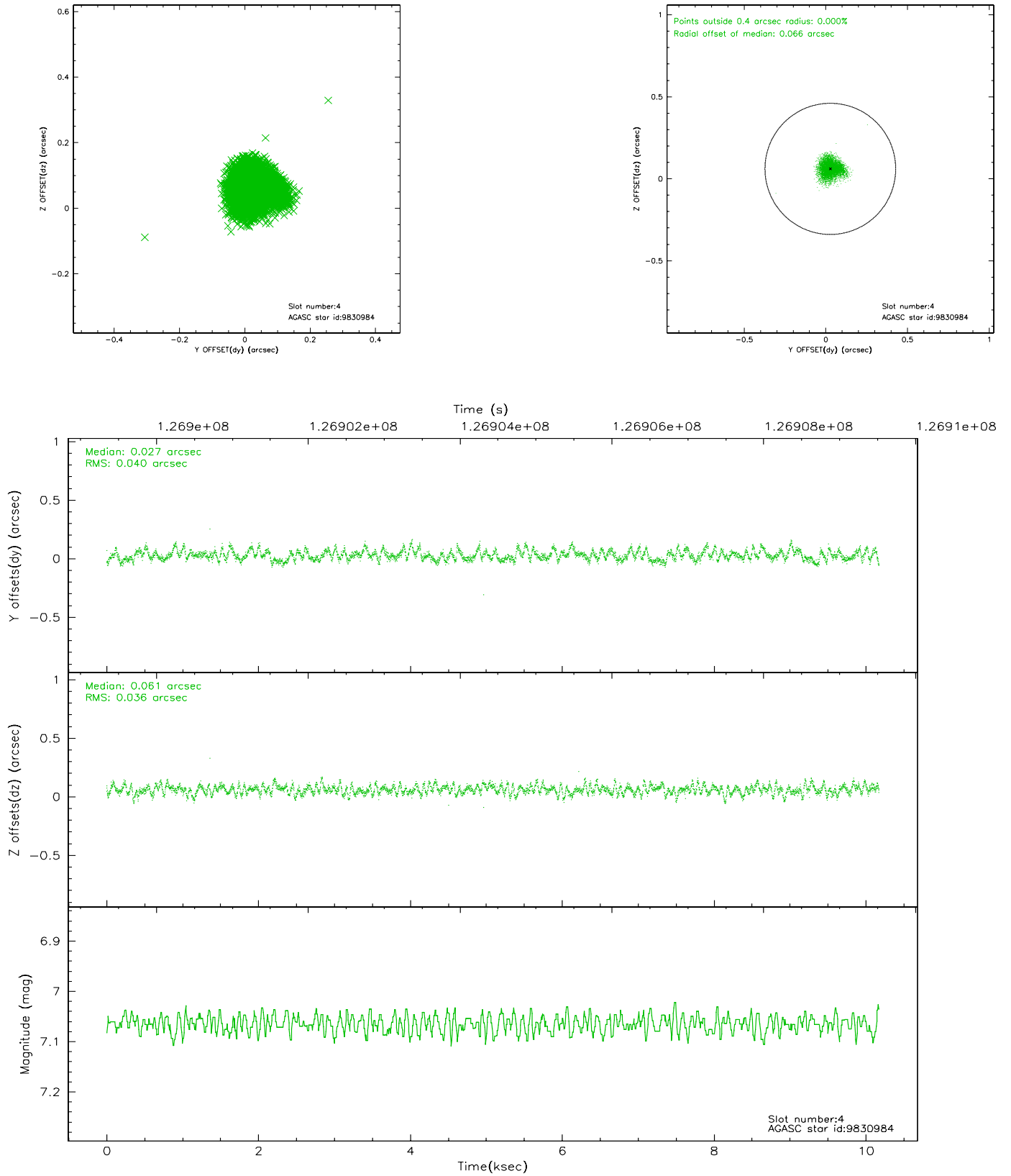
slot	status	id	mag	n_pts	med_dy	med_dz	dr1	dr2	ra	dec	mean_y	mean_z
0	FID	ACIS-I-1	7.24	2480	0.038	-0.109	0.006	0.011	0.000000	0.000000	937.22	-974.01
1	FID	ACIS-I-3	7.43	2480	-0.035	0.262	0.007	0.011	0.000000	0.000000	54.93	-1107.22
2	FID	ACIS-I-6	7.26	2482	-0.092	-0.086	0.005	0.010	0.000000	0.000000	402.94	1567.49
3	GUIDE	10092712	7.07	4961	-0.120	-0.063	0.052	0.080	64.322459	2.529688	-1477.03	-1453.98
4	GUIDE	9830984	7.06	4958	0.027	0.061	0.058	0.091	65.442956	2.390106	872.82	1858.37
5	GUIDE	9703224	7.75	4961	0.064	0.012	0.056	0.093	64.728794	1.773459	1613.46	-1454.79
6	GUIDE	10093656	8.29	4960	-0.036	0.108	0.060	0.096	64.910383	2.992173	-1942.41	1196.41
7	GUIDE	9707240	8.74	4958	0.061	-0.117	0.066	0.106	64.375838	2.149421	-180.55	-1932.87

2.4 Star Slots

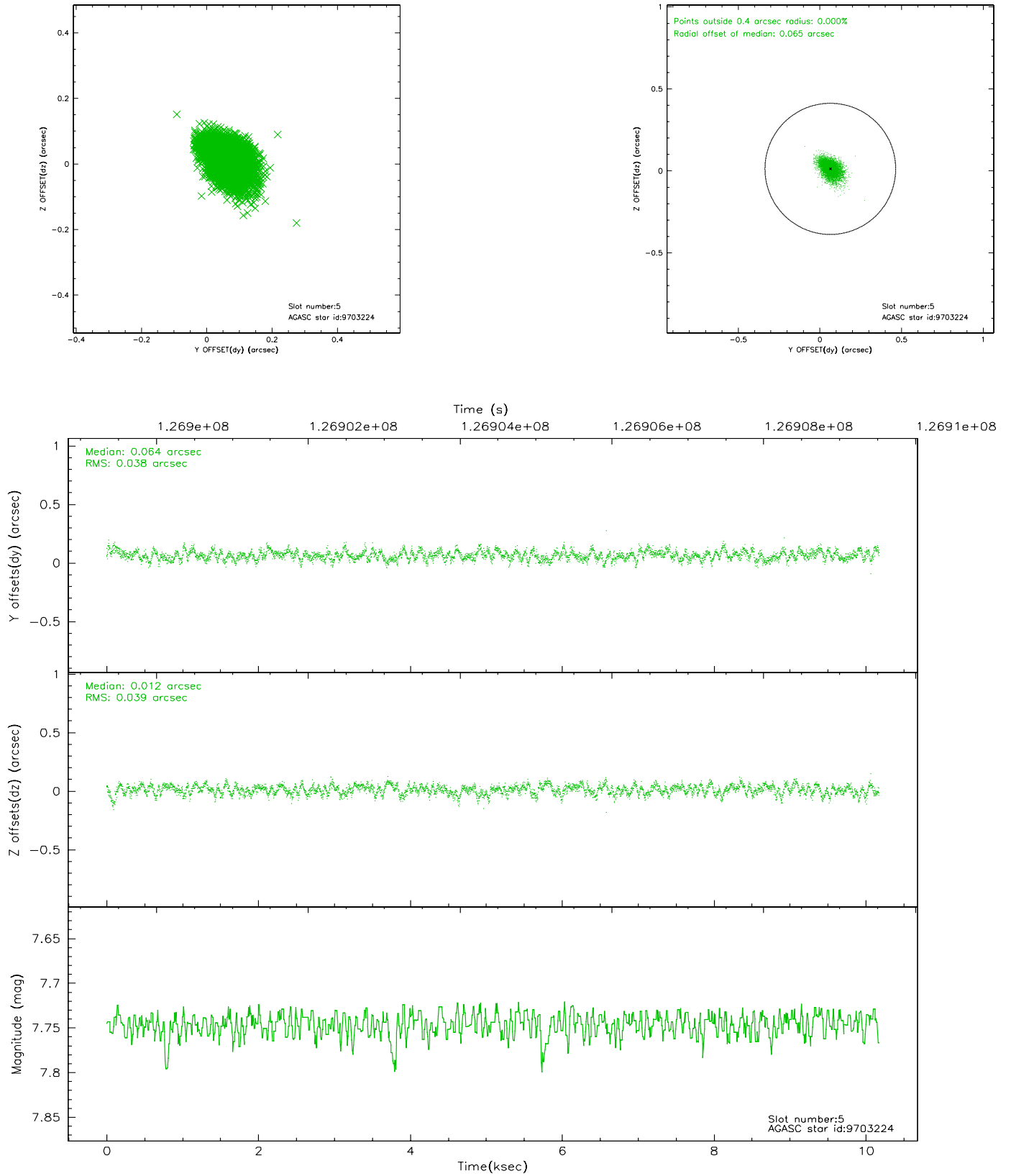
2.4.1 Slot 3



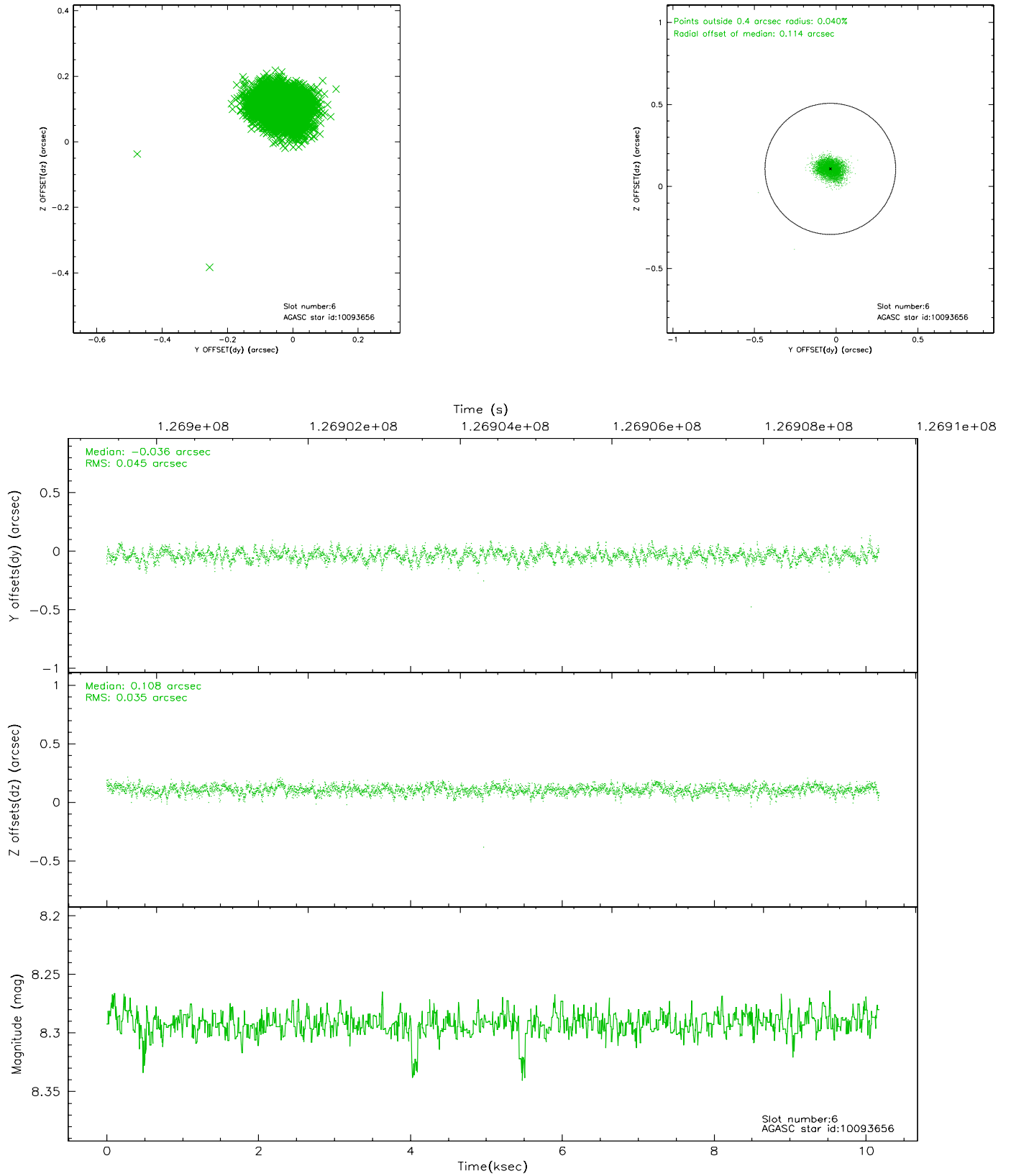
2.4.2 Slot 4



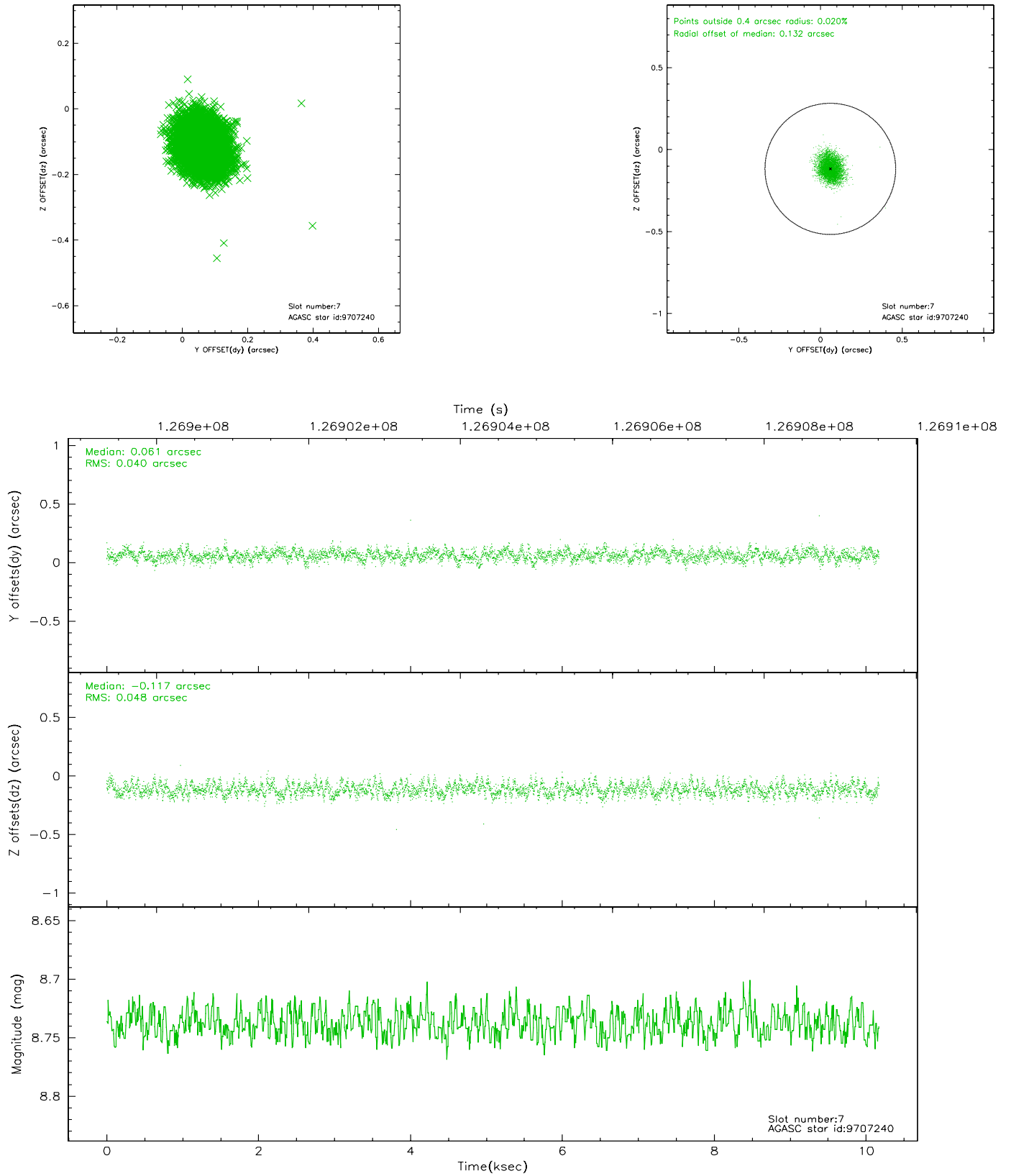
2.4.3 Slot 5



2.4.4 Slot 6

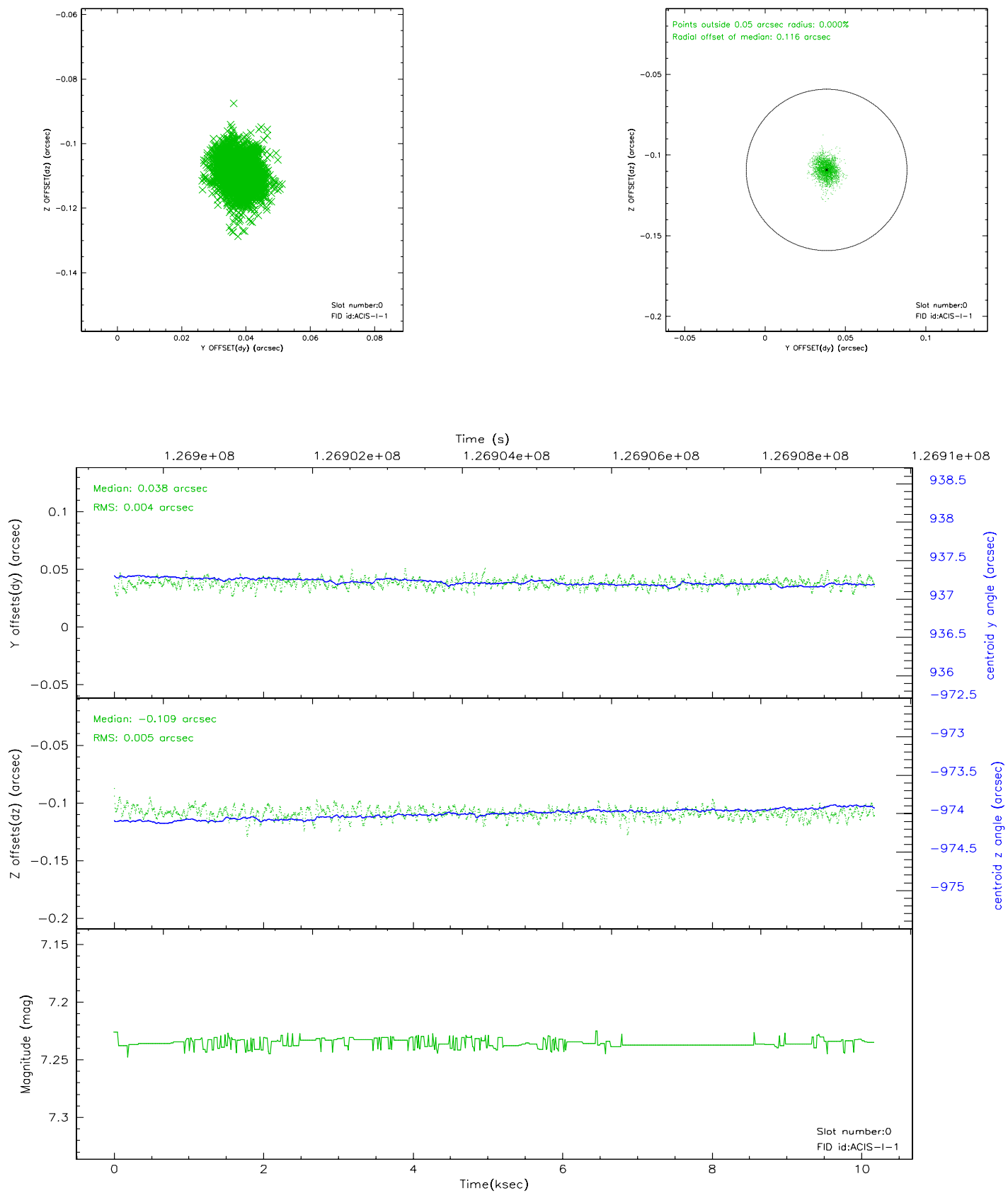


2.4.5 Slot 7

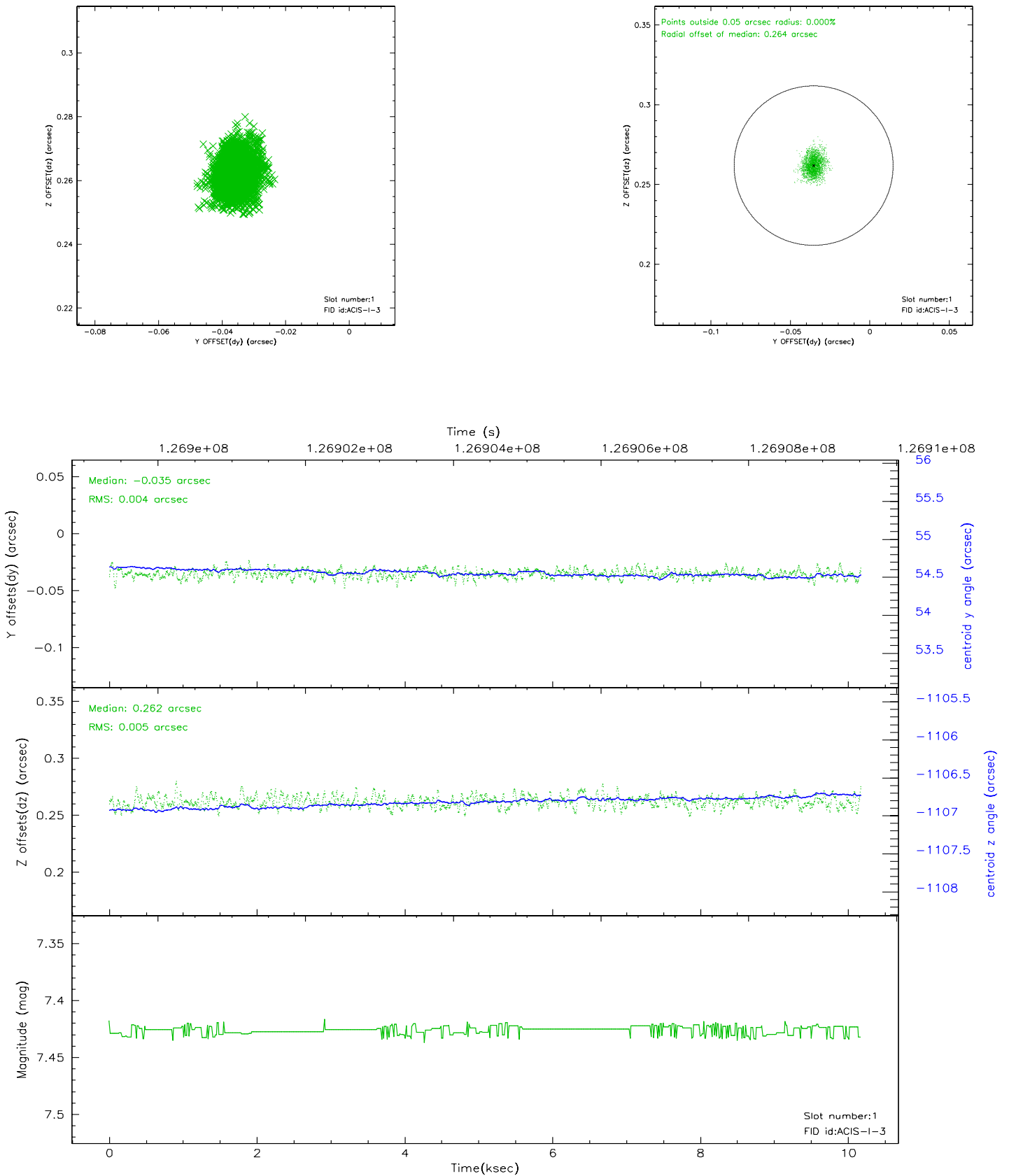


2.5 FID Slots

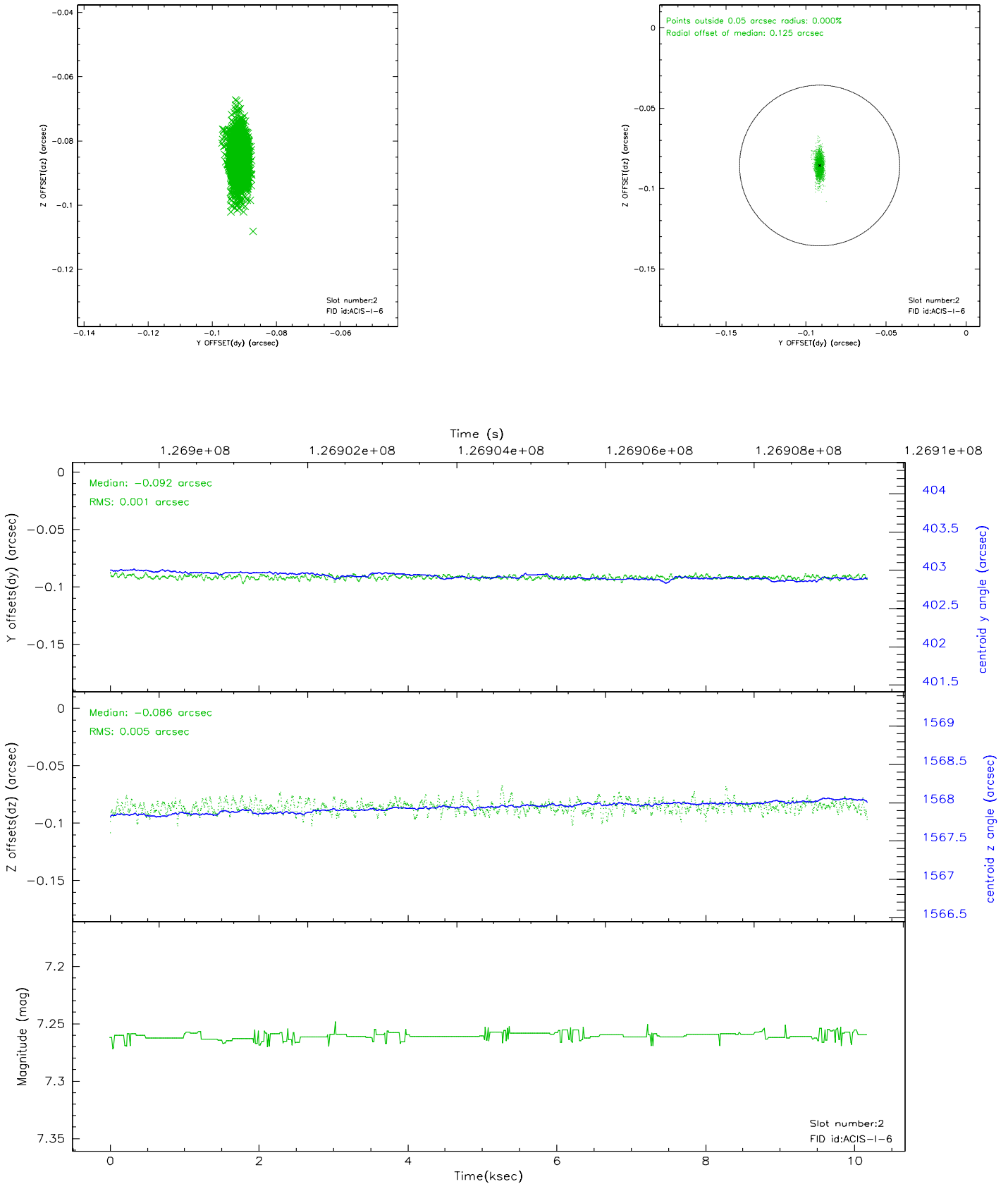
2.5.1 Slot 0



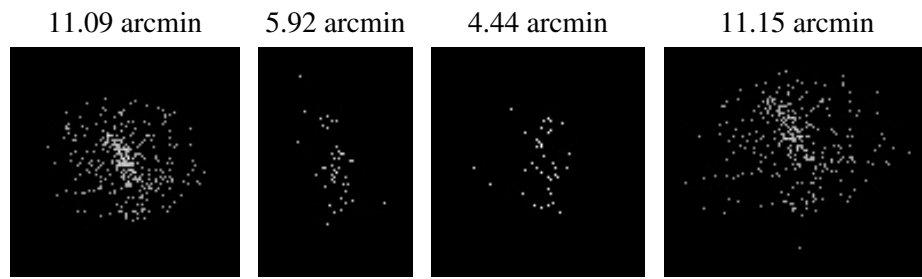
2.5.2 Slot 1



2.5.3 Slot 2



3 Point Sources



A Summary

A.1 Status

V&V Scientist	Jen Lauer
V&V Date (YYYY-MM-DD)	2006.08.28
V&V Edition	1
V&V Disposition and Status	OK
V&V Charge Time	10.115

A.2 Comments