

V&V Reference Report

L2 ASCDS Version : 8.4.5

Observation 2926 - L2 Version 3
Chandra X-Ray Center

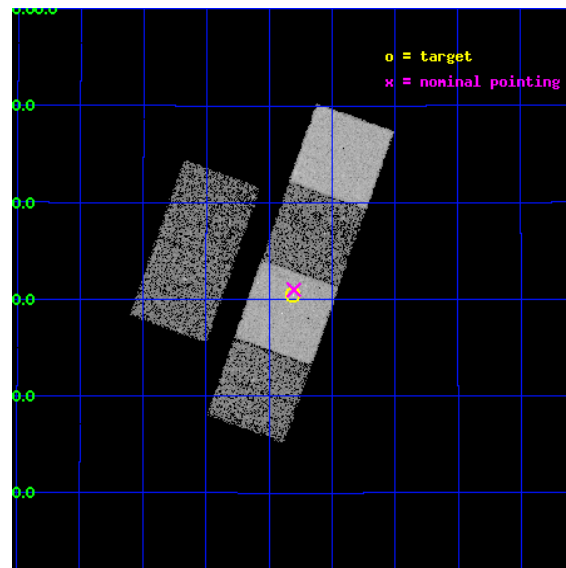
L2 Processing Date : Oct 1 2012

Contents

1	Front	2
2	OBI	3
2.1	OBI	3
2.1.1	Images	3
2.1.2	Bias	3
2.1.3	Parameters	4
2.1.4	Events	4
2.2	Compared Parameters	5
2.3	Aspect	6
2.4	Star Slots	9
2.4.1	Slot 3	9
2.4.2	Slot 4	10
2.4.3	Slot 5	11
2.4.4	Slot 6	12
2.4.5	Slot 7	13
2.5	FID Slots	14
2.5.1	Slot 0	14
2.5.2	Slot 1	15
2.5.3	Slot 2	16
A	Summary	17
A.1	Status	17
A.2	Comments	17

1 Front

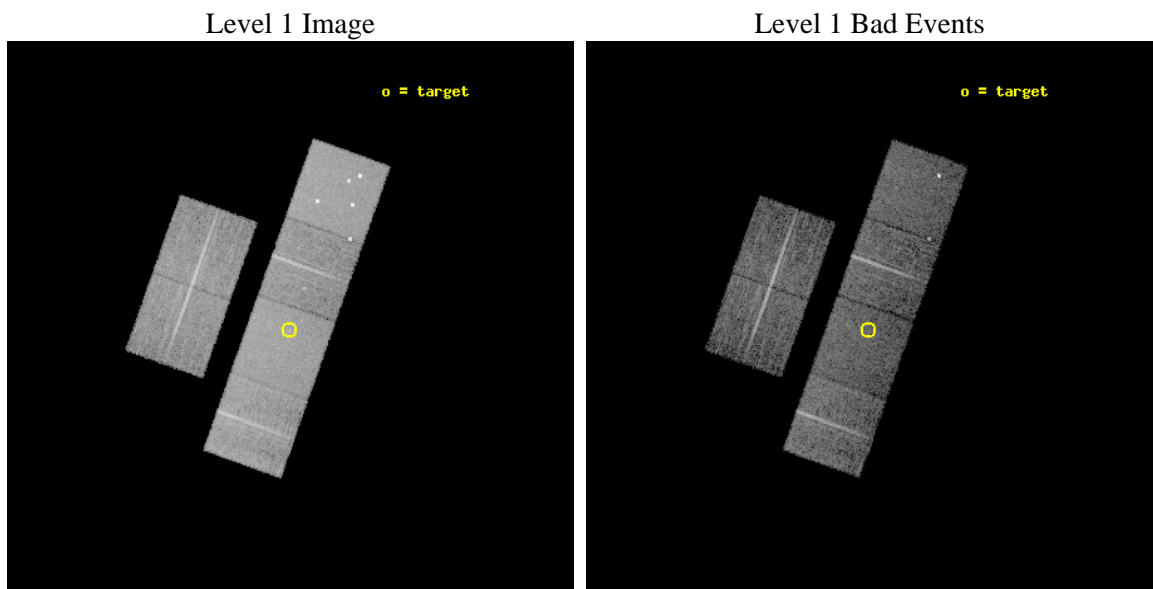
seq_num	600263	Sequence number
obs_id	2926	Observation id
title	CHANDRA SURVEY OF GALAXIES WITH KNOWN BLACK HOLE MASSES	Proposal t
observer	Dr. Andrew Ptak	Principal investigator
object	NGC 3245	Source name
dtcycle	0	
cycle	P	events from which exps? Prim/Second/Both
ra_targ	156.8275	Observer's specified target RA [deg]
dec_targ	28.506944	Observer's specified target Dec [deg]
ra_nom	156.82570839626	Nominal RA [deg]
dec_nom	28.516500755587	Nominal Dec [deg]
roll_nom	109.59069389096	Nominal Roll [deg]
revision	3	Processing version of data
ontime	9755.6712731272	Sum of GTIs [s]
livetime	9632.1390893069	Livetime [s]
ontime2	9755.7123131305	Sum of GTIs [s]
ontime3	9755.5481531322	Sum of GTIs [s]
ontime5	9755.6302331239	Sum of GTIs [s]
ontime6	9755.5891931355	Sum of GTIs [s]
ontime7	9755.6712731272	Sum of GTIs [s]
ontime8	9752.2660232931	Sum of GTIs [s]
l2events	93968	Number of level 2 events



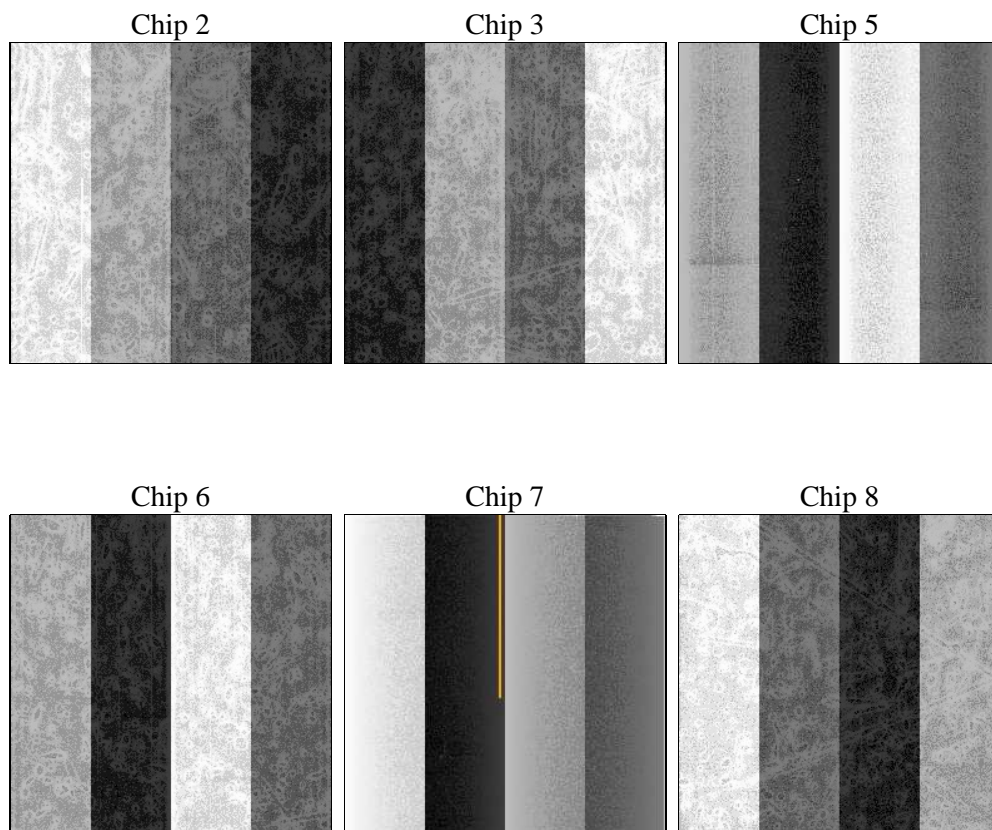
2 OBI

2.1 OBI

2.1.1 Images



2.1.2 Bias



2.1.3 Parameters

obi_num	0	Obi number	sched_exp_time	10000.000000	[s] Scheduled observation exposure time
ascdsver	8.4.5	Processing system revision	ontime	9755.6712731272	Sum of GTIs [s]
caldsver	4.5.2	 	ontime2	9755.7123131305	Sum of GTIs [s]
date	2012-10-01T05:54:35	Date and time of file creation	ontime3	9755.5481531322	Sum of GTIs [s]
revision	3	Processing version of data	ontime5	9755.6302331239	Sum of GTIs [s]
			ontime6	9755.5891931355	Sum of GTIs [s]
			ontime7	9755.6712731272	Sum of GTIs [s]
			ontime8	9752.2660232931	Sum of GTIs [s]
			l1events	437948	Number of level 1 events

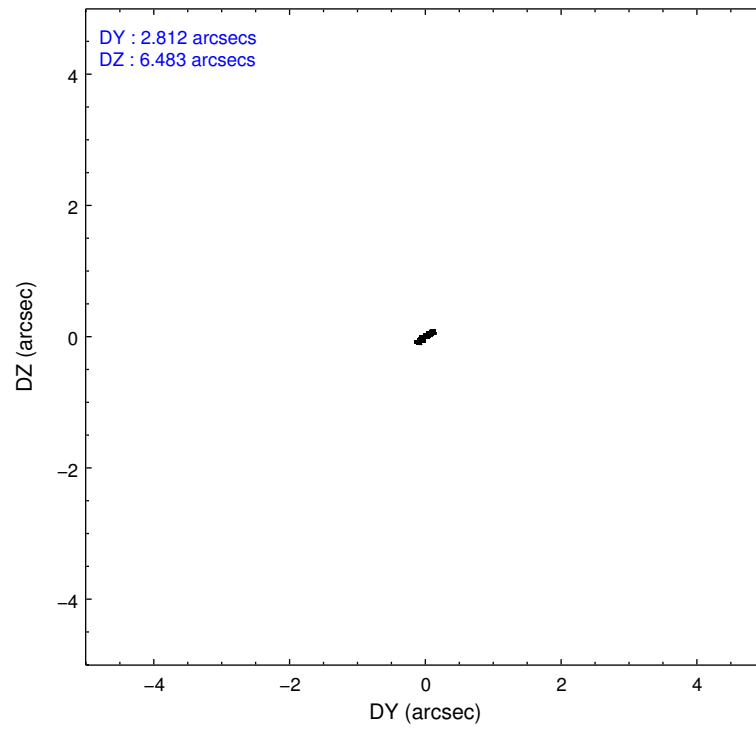
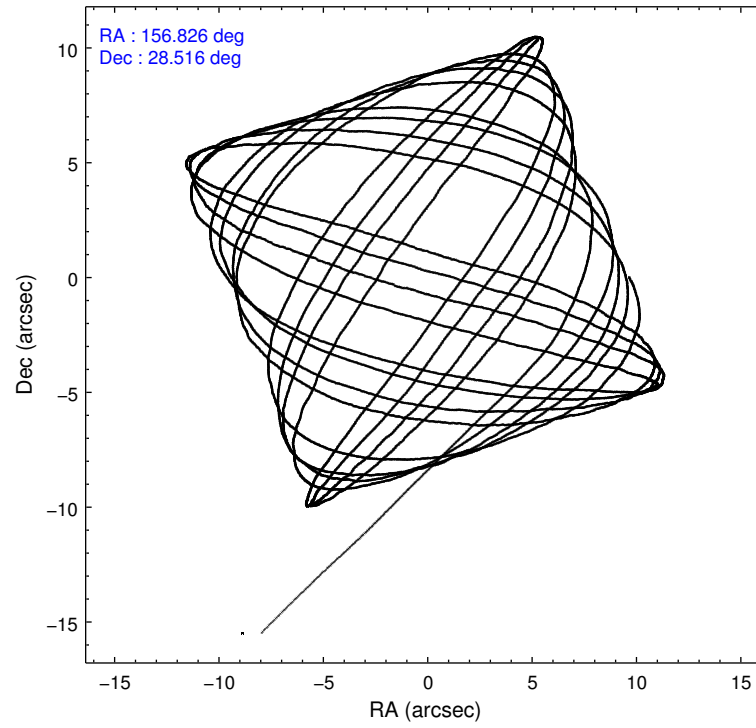
2.1.4 Events

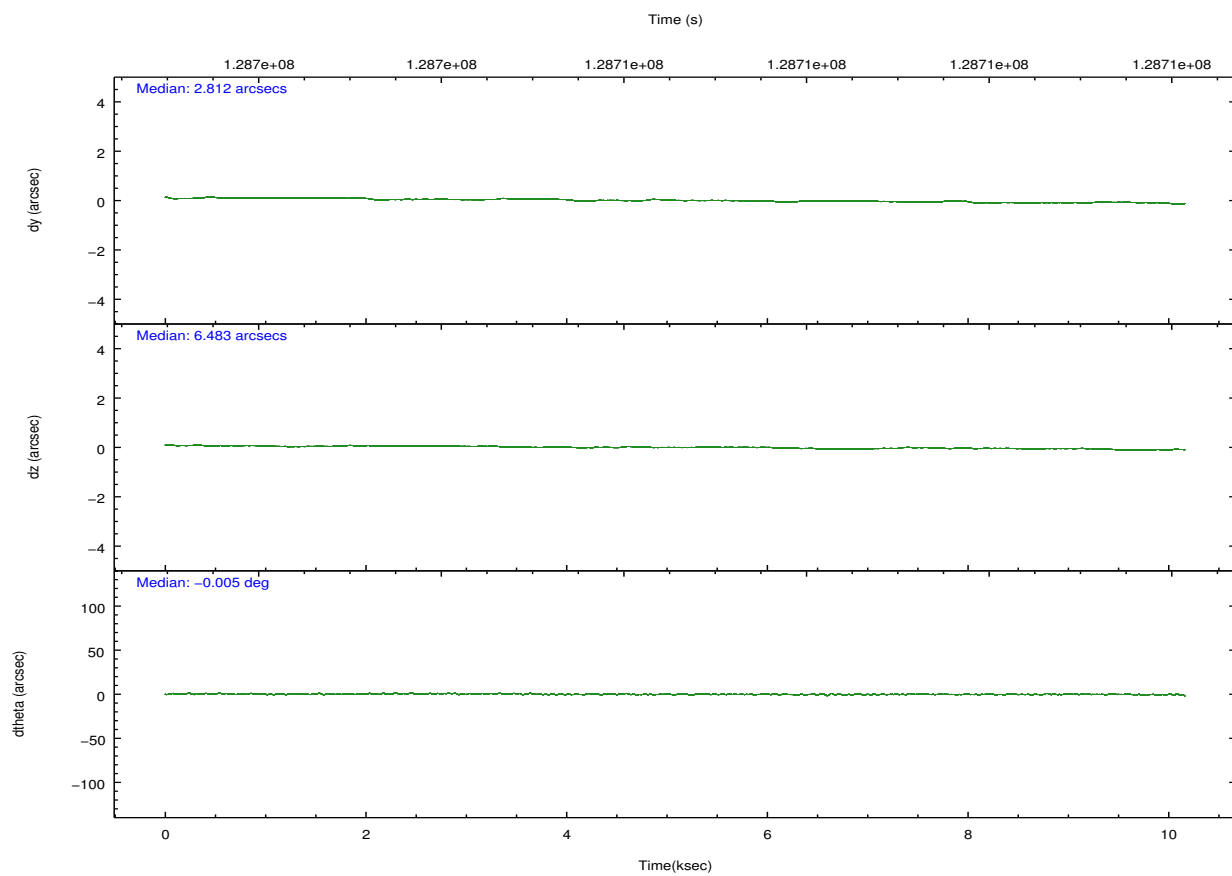
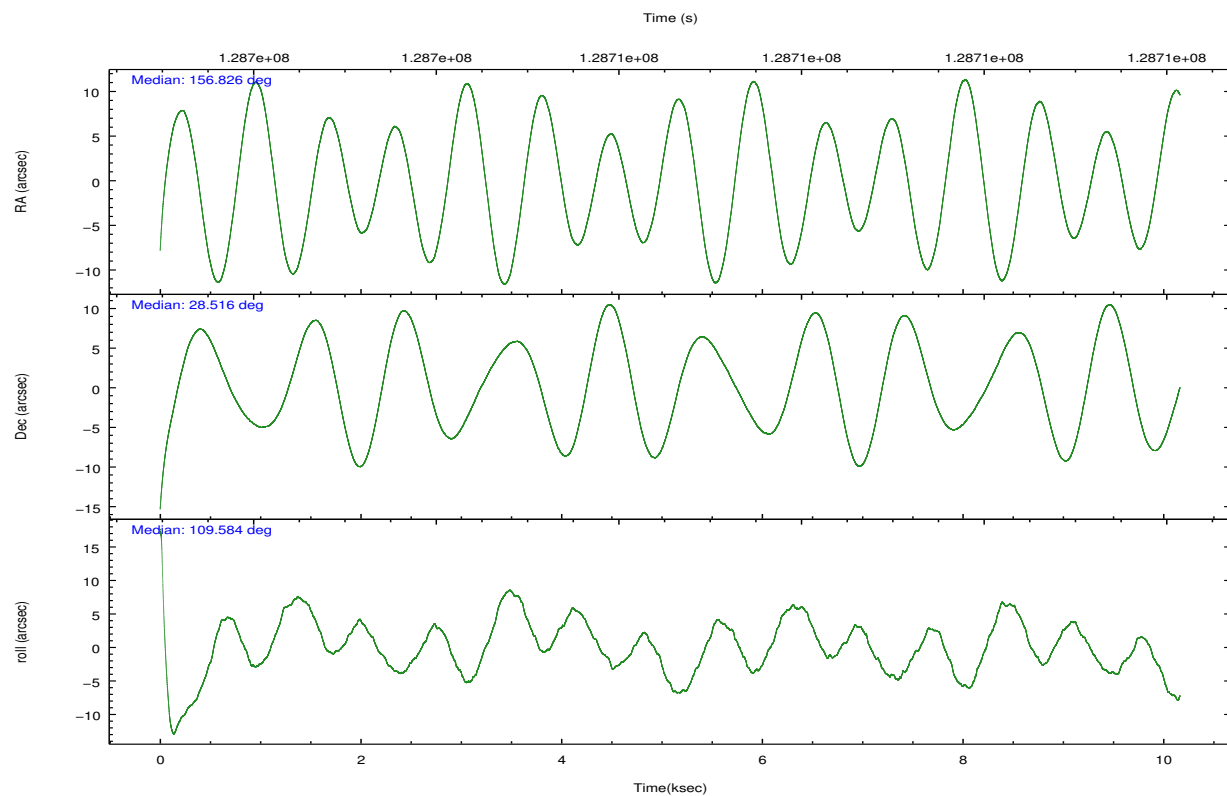
	ccd 2	ccd 3	ccd 5	ccd 6	ccd 7	ccd 8		ccd 2	ccd 3	ccd 5	ccd 6	ccd 7	ccd 8
level 1 events	62406	59686	95152	60917	79590	80197	grade 0 events	2647	2989	9806	3098	3248	5060
rejected events	55683	52681	49083	53430	46520	63803		4%	5%	10%	5%	4%	6%
rejected %	89%	88%	51%	87%	58%	79%	grade 1 events	26	37	358	37	93	45
								0%	0%	0%	0%	0%	0%
							grade 2 events	1521	1388	12331	1500	6654	3569
								2%	2%	12%	2%	8%	4%
							grade 3 events	675	668	1747	769	3036	1834
								1%	1%	1%	1%	3%	2%
							grade 4 events	639	683	1631	690	2957	1713
								1%	1%	1%	1%	3%	2%
							grade 5 events	2221	2315	6523	2588	7553	3225
								3%	3%	6%	4%	9%	4%
							grade 6 events	1244	1284	20585	1438	17199	4222
								1%	2%	21%	2%	21%	5%
							grade 7 events	53433	50322	42171	50797	38850	60529
								85%	84%	44%	83%	48%	75%

2.2 Compared Parameters

Parameter	Planned	Actual	Parameter	Planned	Actual
Instrument	ACIS	ACIS	Obspar format version number	7	7
Detector	ACIS-235678	ACIS-235678	Obspar file type	PREDICTED	ACTUAL
Grating	NONE	NONE	Obspar update status	NONE	UPDATED
Data mode	FAINT	FAINT	Number of optional ACIS chips dropped	0	0
Observation mode	POINTING	POINTING	On-chip summing requested	N	N
[deg] Pointing RA	156.849547	156.8257083962595	Subarray requested	NONE	NONE
[deg] Pointing Dec	28.499113	28.51650075558659	Alternating exposures requested	N	N
[deg] Pointing Roll	109.422653	109.5906938909638	[s] Primary exposure time	0.000000	3.2
[mm] SIM focus pos	-0.684267	-0.6828225247311905			
[mm] SIM defocus	0	0.001444936568705701			
[mm] SIM translation stage pos	-190.132523	-190.1400660498719			
[mm] SIM translation stage offset	0	0.00754346686406393			
[s] Observation start time (MET)	128701641.184000	128700197.19871			
Observation start date	2002-01-29T14:26:17	2002-01-29T14:03:17			
[s] Observation end time (MET)	128711641.184000	128712229.16169			
Observation end date	2002-01-29T17:12:57	2002-01-29T17:23:49			
Read mode	TIMED	TIMED			

2.3 Aspect



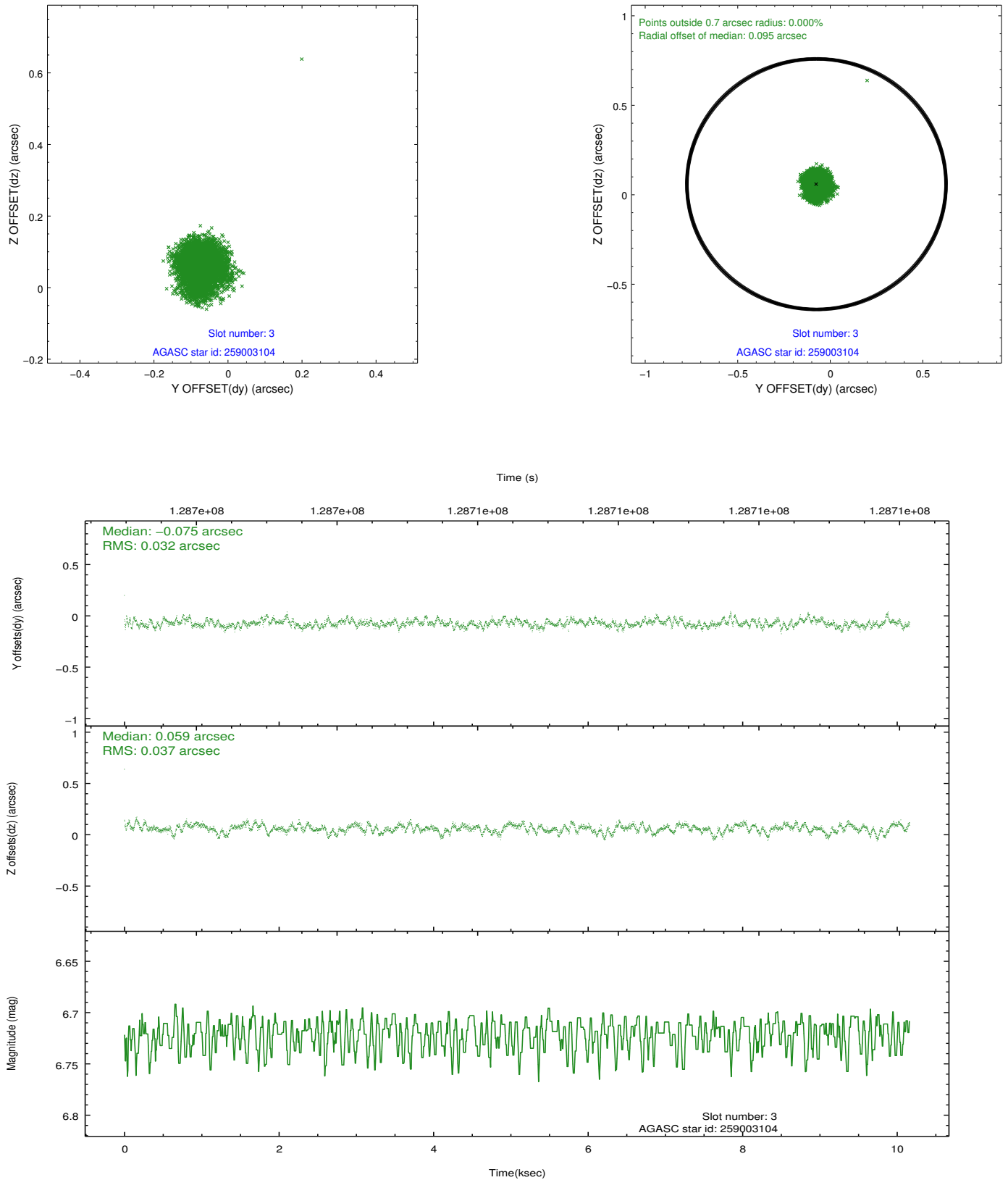


Slot Statistics

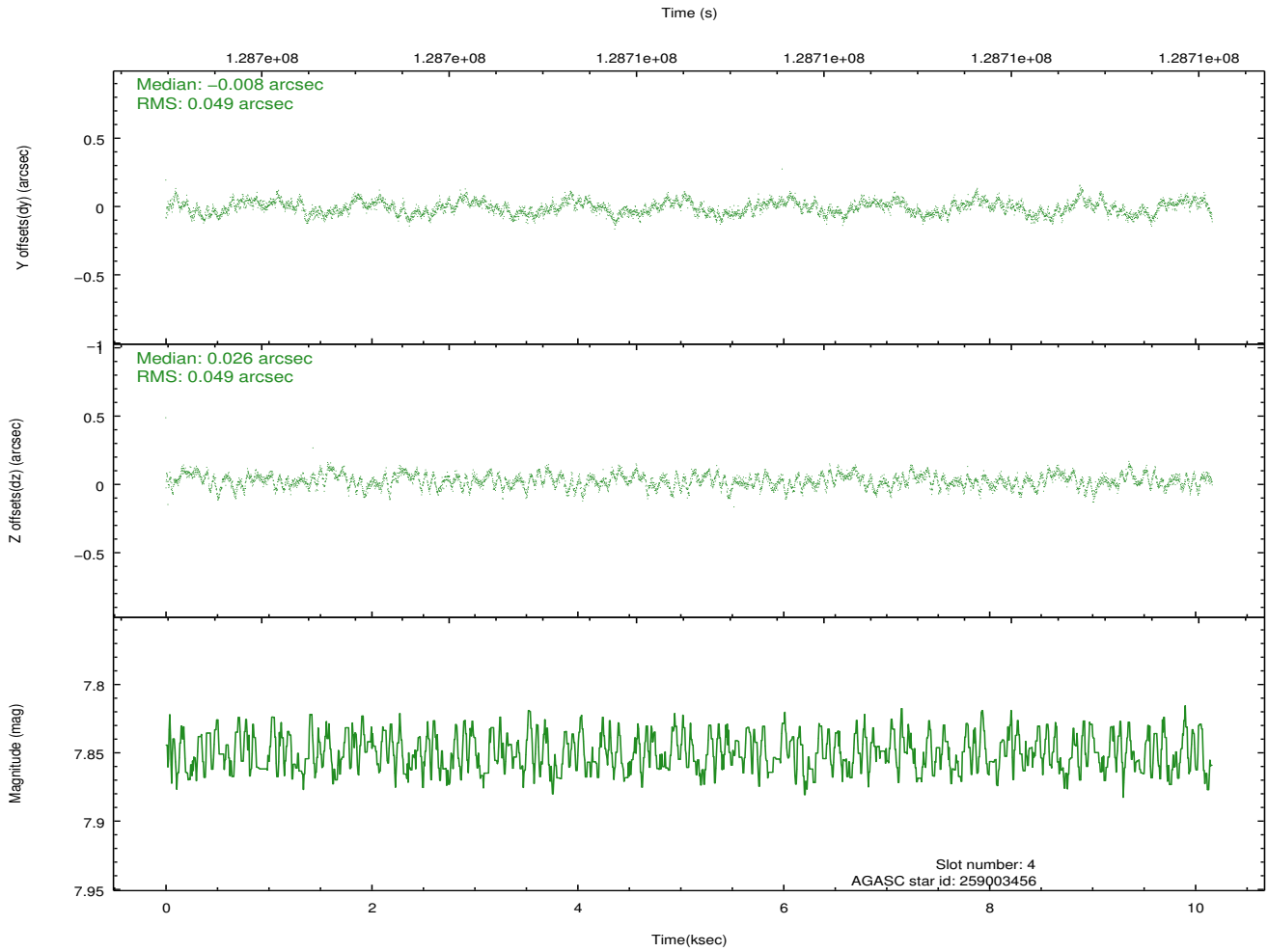
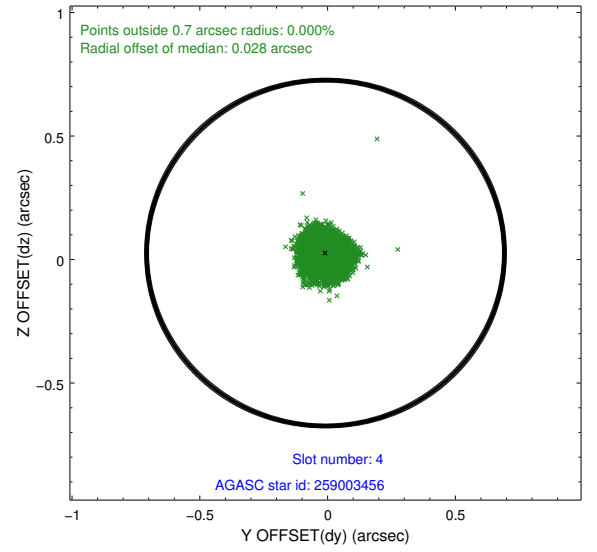
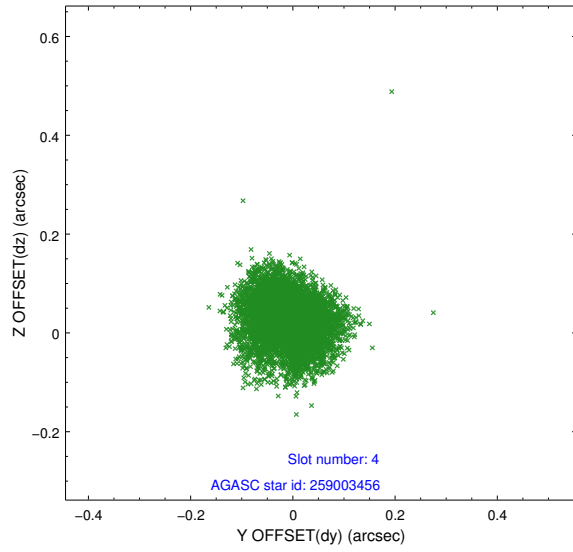
slot	status	id	mag	n_pts	med_dy	med_dz	dr1	dr2	ra	dec	mean_y	mean_z
0	FID	ACIS-S-2	7.12	2478	-0.030	0.009	0.007	0.012	0.000000	0.000000	-755.46	-1727.64
1	FID	ACIS-S-4	7.20	2478	-0.025	0.012	0.006	0.011	0.000000	0.000000	2157.56	180.36
2	FID	ACIS-S-5	7.24	2479	0.023	-0.012	0.009	0.015	0.000000	0.000000	-1807.61	174.54
3	GUIDE	259003104	6.72	4957	-0.075	0.059	0.052	0.084	157.473711	28.581224	-371.76	-1961.38
4	GUIDE	259003456	7.85	4957	-0.008	0.026	0.075	0.114	157.443141	28.555534	-427.49	-1840.13
5	GUIDE	259007536	9.41	4952	0.009	-0.034	0.075	0.122	156.856507	28.103646	-1349.53	451.50
6	GUIDE	259001248	8.99	4955	0.033	-0.084	0.072	0.116	156.819979	27.871066	-2100.76	839.92
7	GUIDE	259007088	9.47	4956	0.039	0.042	0.159	0.229	157.057945	28.387879	-596.27	-489.72

2.4 Star Slots

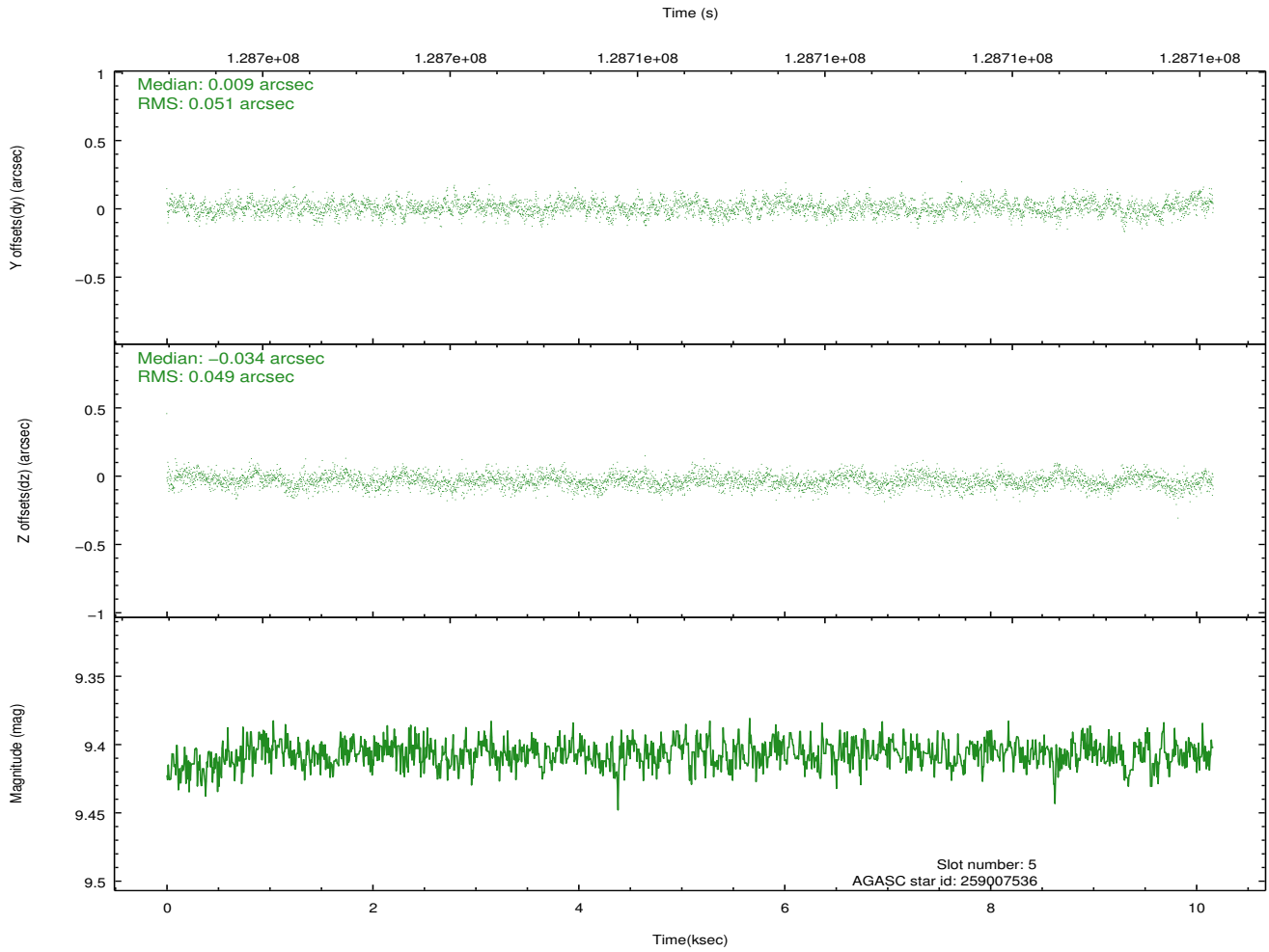
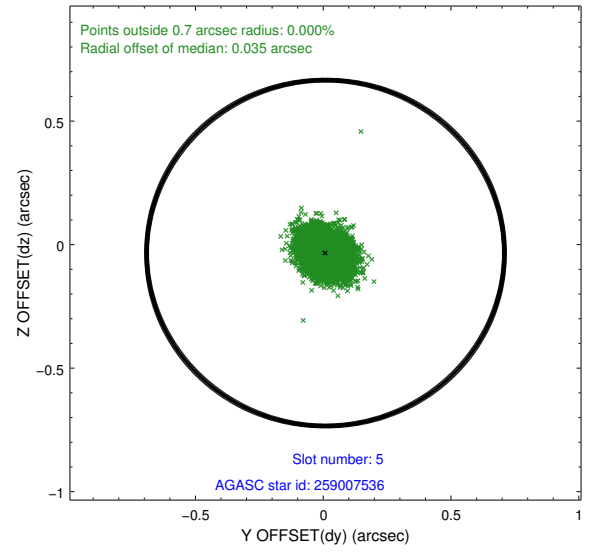
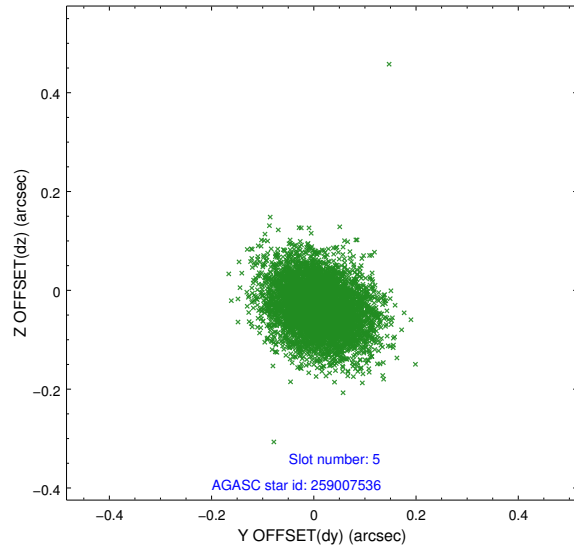
2.4.1 Slot 3



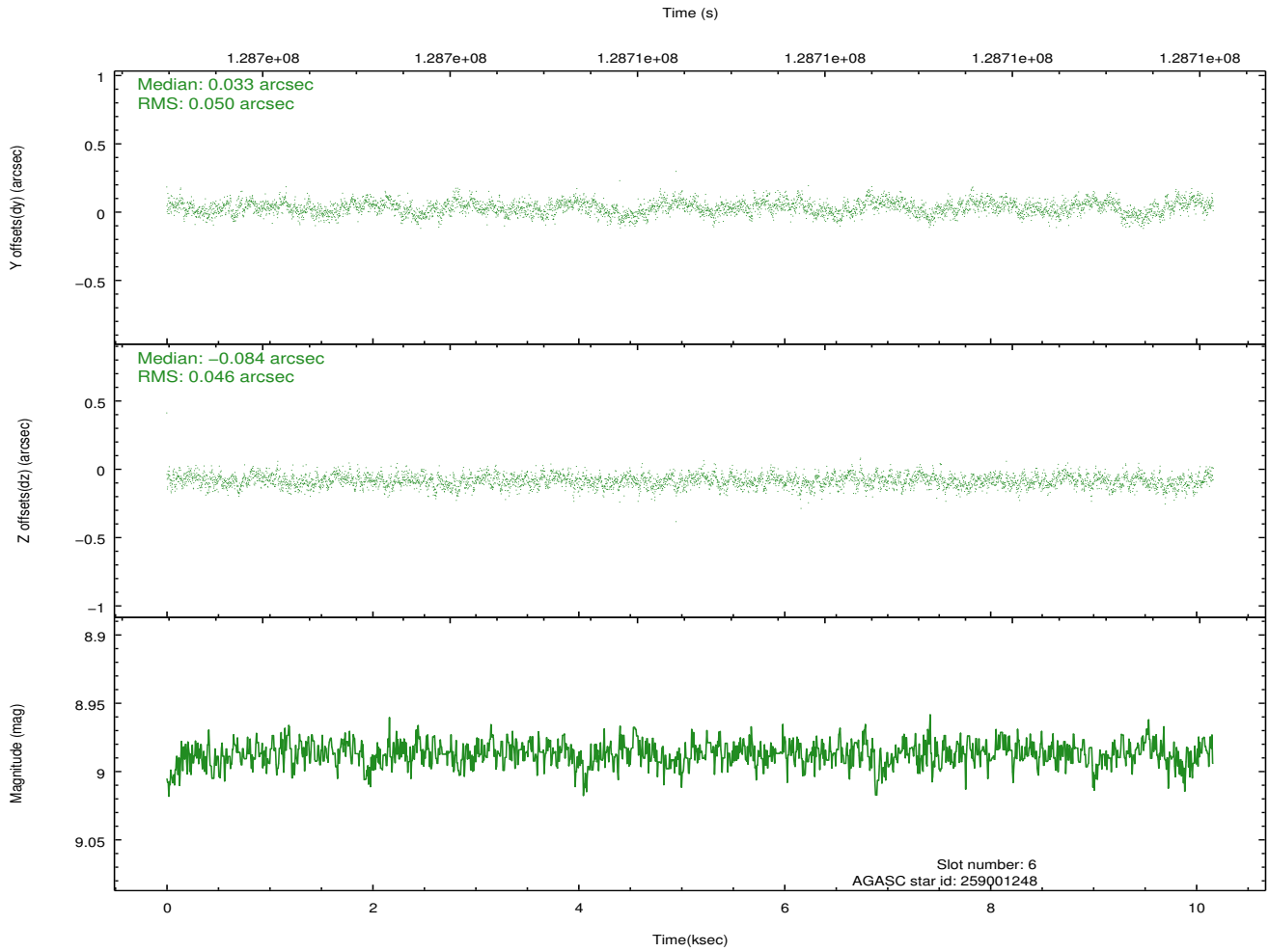
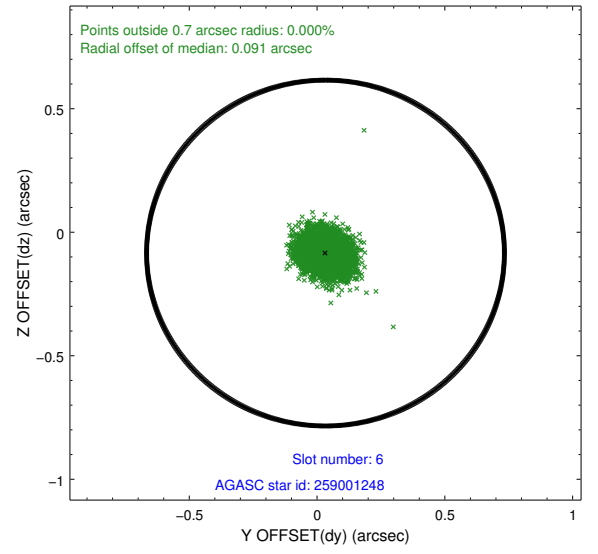
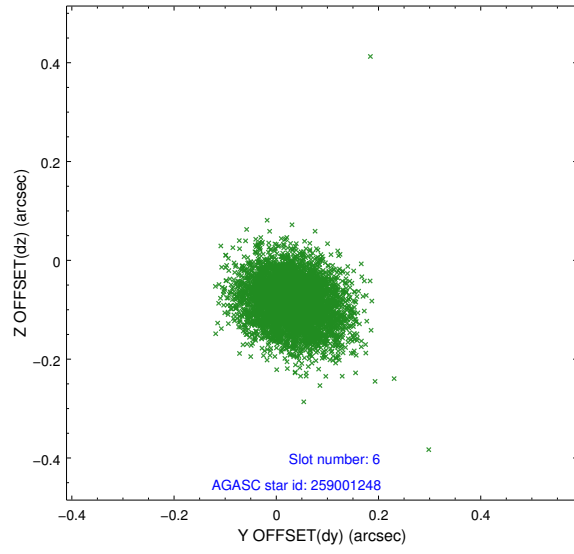
2.4.2 Slot 4



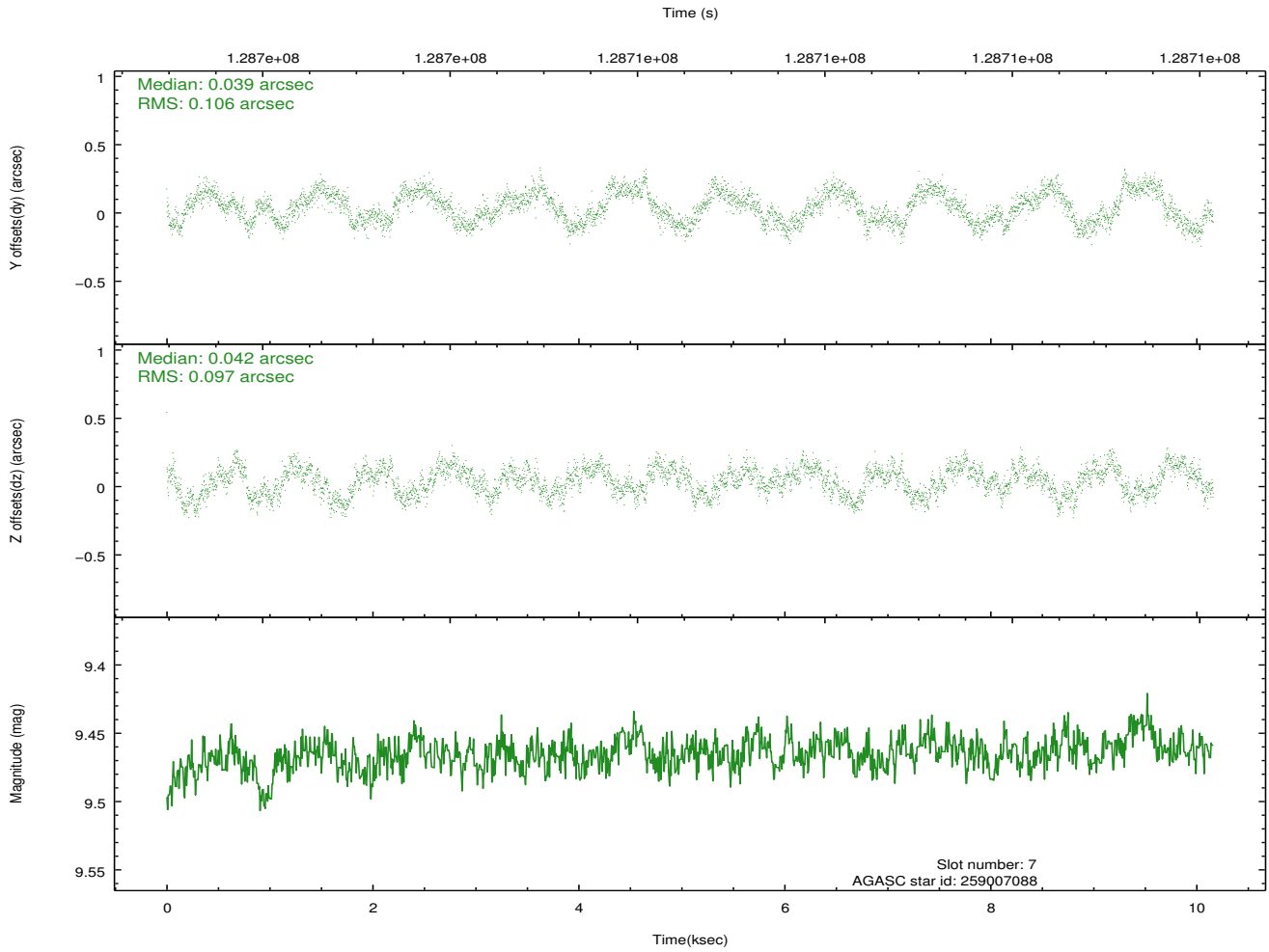
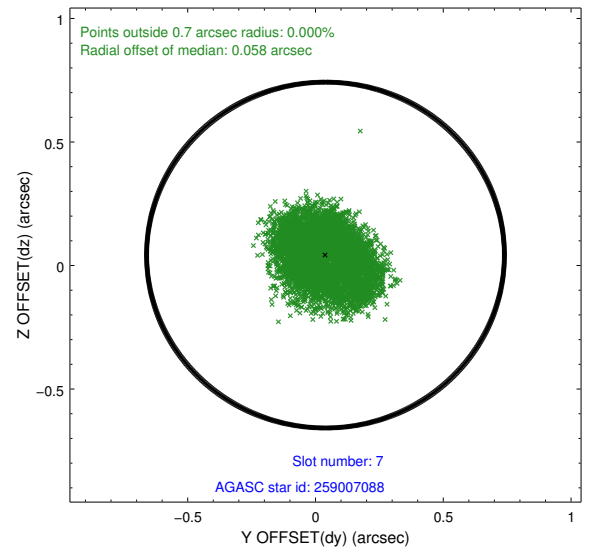
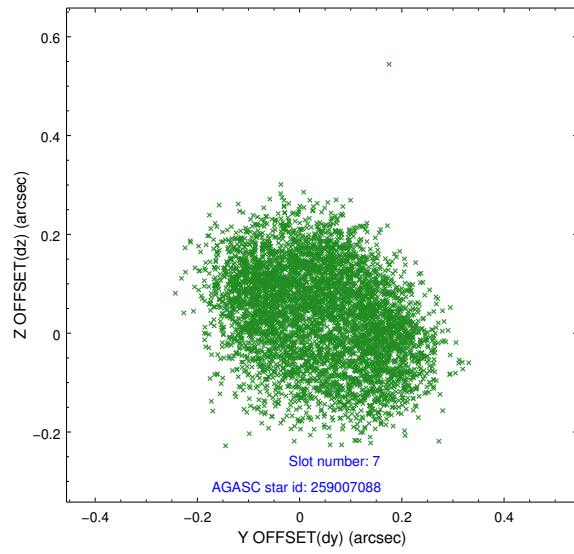
2.4.3 Slot 5



2.4.4 Slot 6

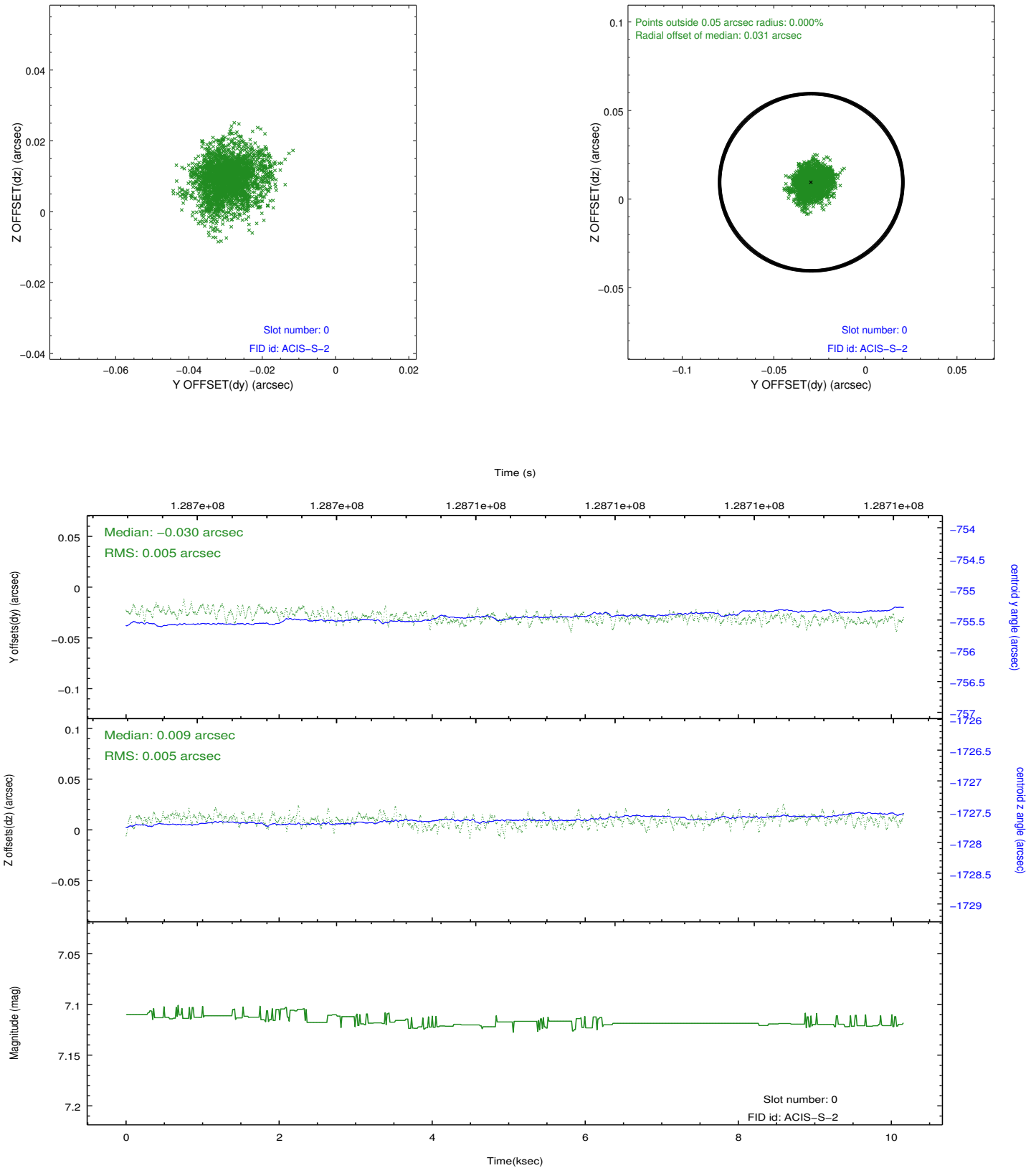


2.4.5 Slot 7

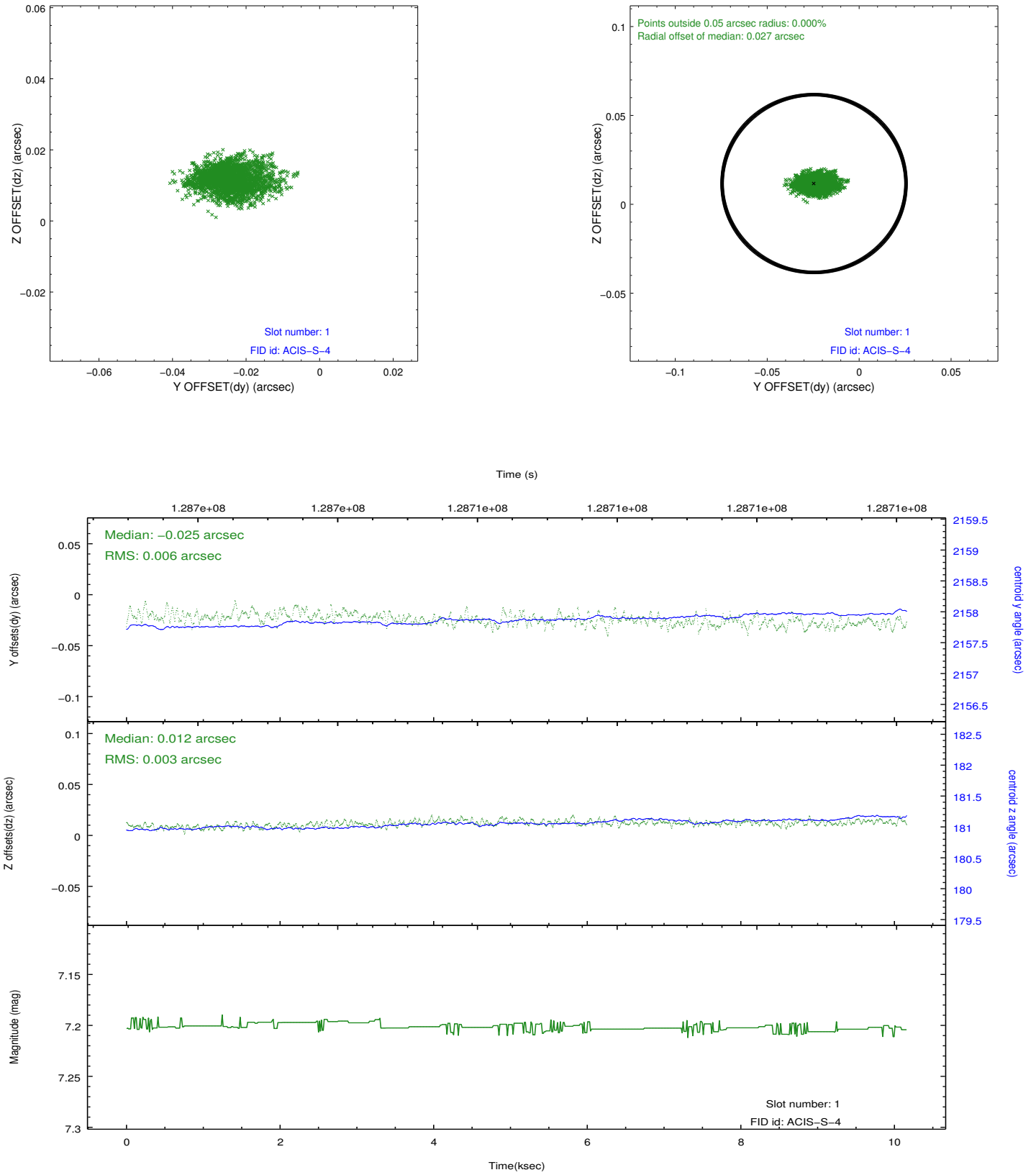


2.5 FID Slots

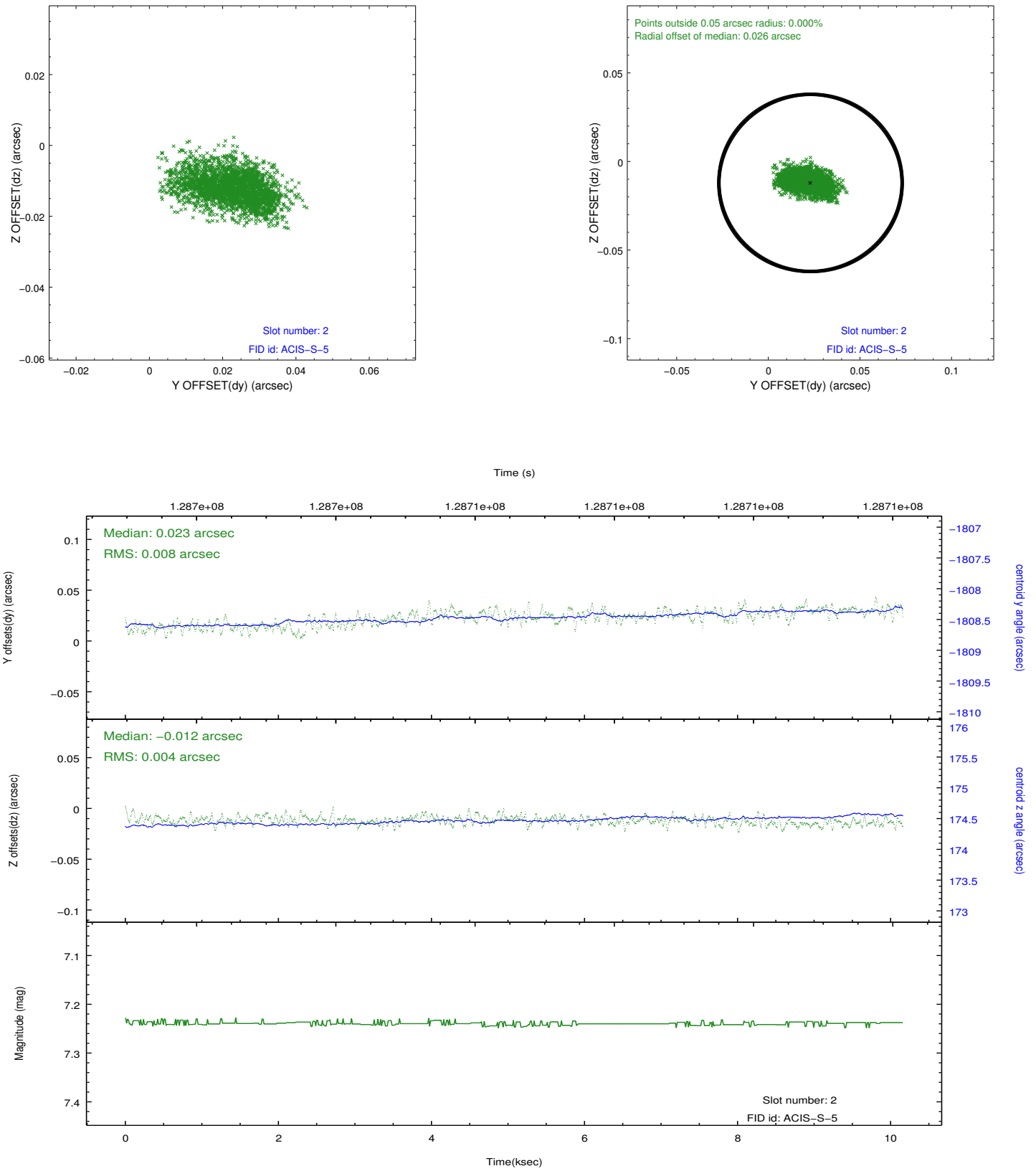
2.5.1 Slot 0



2.5.2 Slot 1



2.5.3 Slot 2



A Summary

A.1 Status

V&V Scientist	Jen Lauer
V&V Date (YYYY-MM-DD)	2012.10.03
V&V Edition	1
V&V Disposition and Status	OK
V&V Charge Time	9.756

A.2 Comments