

V&V Reference Report

L2 ASCDS Version : 7.6.9

Observation 2826 - L2 Version 001
Chandra X-Ray Center

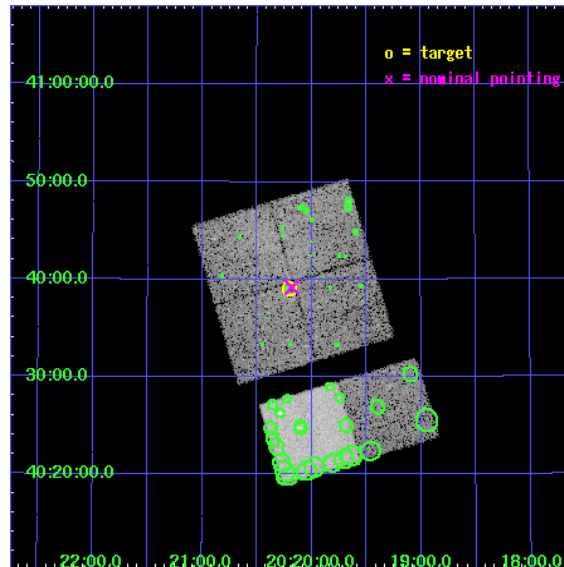
L2 Processing Date : Sep 22 2006

Contents

1	Front	2
2	OBI	3
2.1	OBI	3
2.1.1	Images	3
2.1.2	Bias	3
2.1.3	Parameters	4
2.1.4	Events	4
2.2	Compared Parameters	5
2.3	Aspect	6
2.4	Star Slots	9
2.4.1	Slot 3	9
2.4.2	Slot 4	10
2.4.3	Slot 5	11
2.4.4	Slot 6	12
2.4.5	Slot 7	13
2.5	FID Slots	14
2.5.1	Slot 0	14
2.5.2	Slot 1	15
2.5.3	Slot 2	16
3	Point Sources	17
A	Summary	18
A.1	Status	18
A.2	Comments	18

1 Front

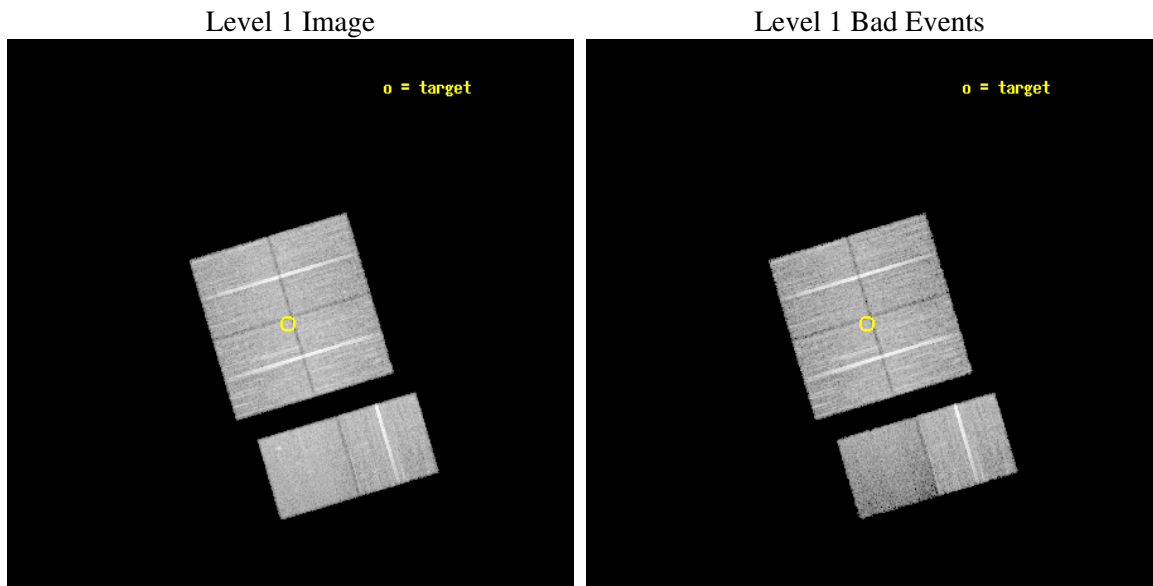
seq_num	500276
obs_id	2826
title	FINE FLUOROSCOPY ON MOLECULAR CLUMPS OVERTAKEN BY SUPERNOVA BLAST WAVE
observer	Dr. Yasunobu Uchiyama
object	G78.2+2.1 CLUMP-2
dtcycle	0
cycle	P
ra_targ	305.05
dec_targ	40.65
ra_nom	305.04530079155
dec_nom	40.652977704574
roll_nom	163.36132159451
revision	2
ontime	19964.799925625
livetime	19711.993607608
ontime0	19964.799925625
ontime1	19964.799925625
ontime2	19961.558955371
ontime3	19964.799925625
ontime6	19964.799925625
ontime7	19964.799925625
l2events	99887



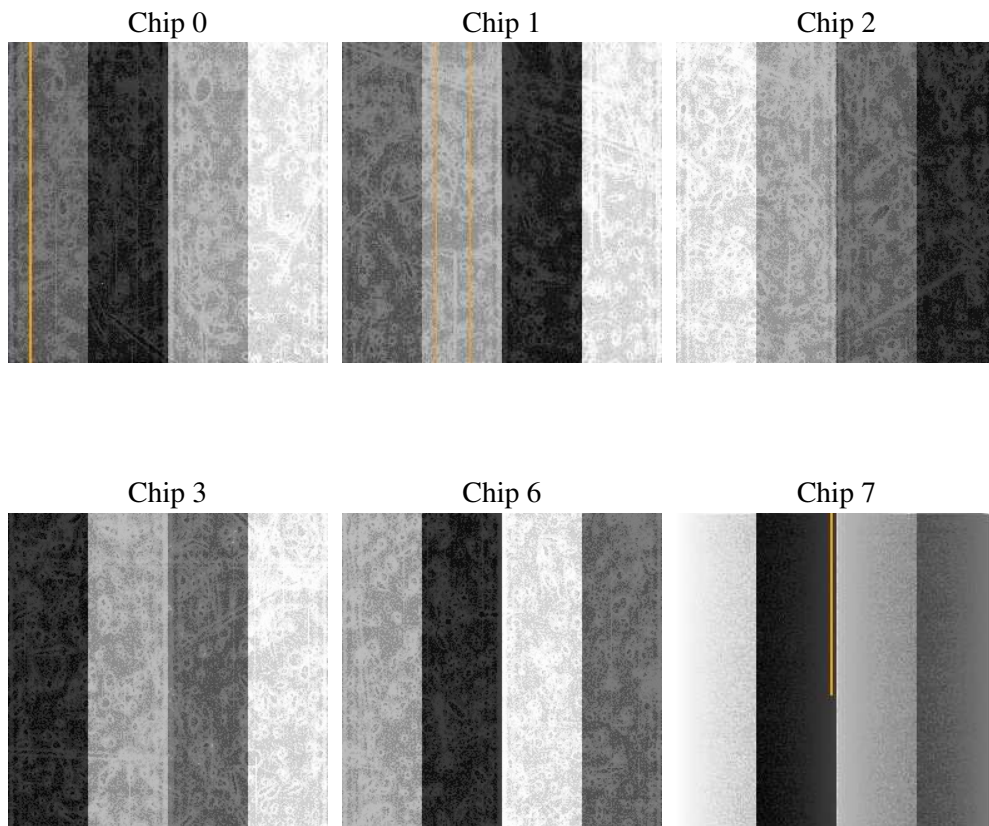
2 OBI

2.1 OBI

2.1.1 Images



2.1.2 Bias



2.1.3 Parameters

obi_num	0
ascdsver	7.6.9
caldsver	3.2.3
date	2006-09-22T19:46:03
revision	2

sched_exp_time	20000.000000
ontime	19967.807599723
ontime0	19967.807599723
ontime1	19967.807599723
ontime2	19964.566599518
ontime3	19967.807599723
ontime6	19967.807569772
ontime7	19967.807599723
l1events	620472

2.1.4 Events

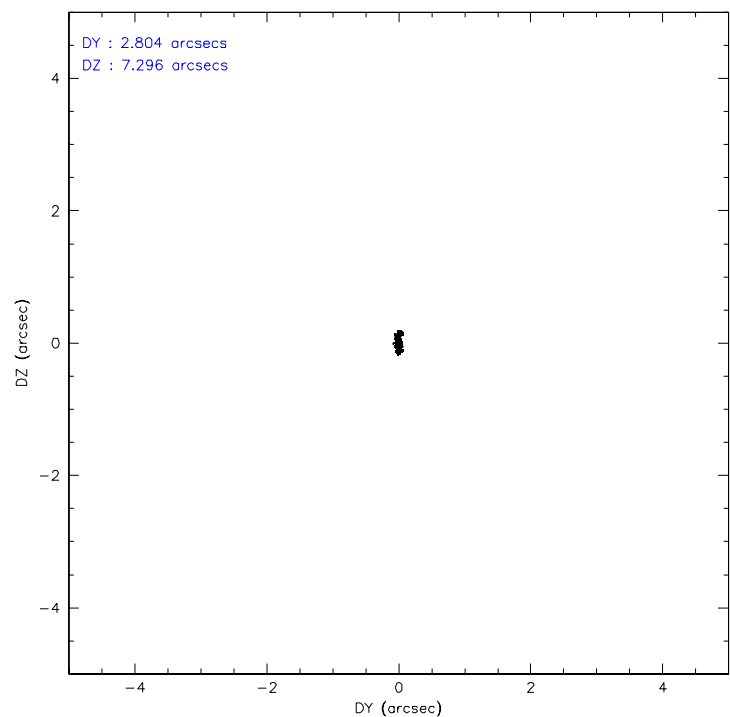
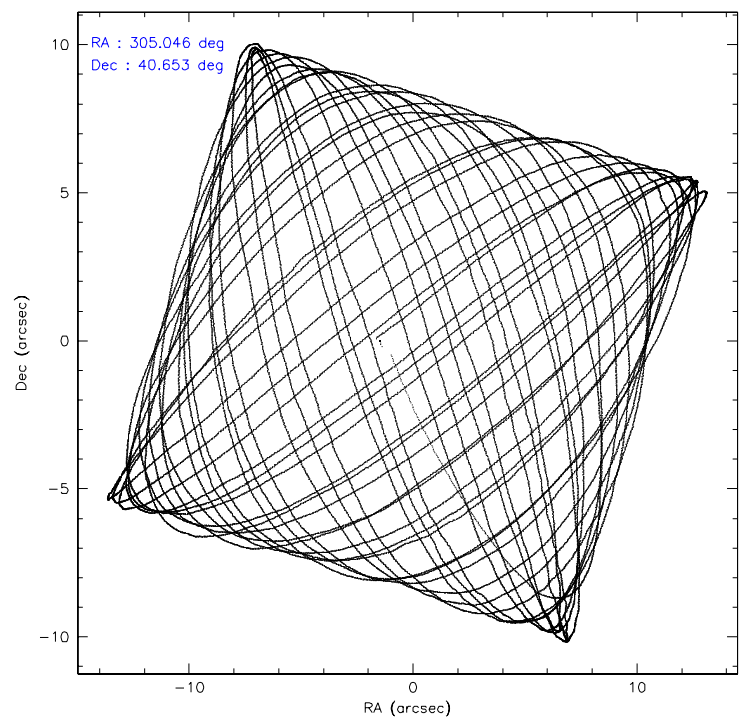
	ccd 0	ccd 1	ccd 2	ccd 3	ccd 6	ccd 7
level 1 events	101304	101879	111840	106121	104981	94347
rejected events	85487	86585	99339	93921	93223	50488
rejected %	84%	84%	88%	88%	88%	53%

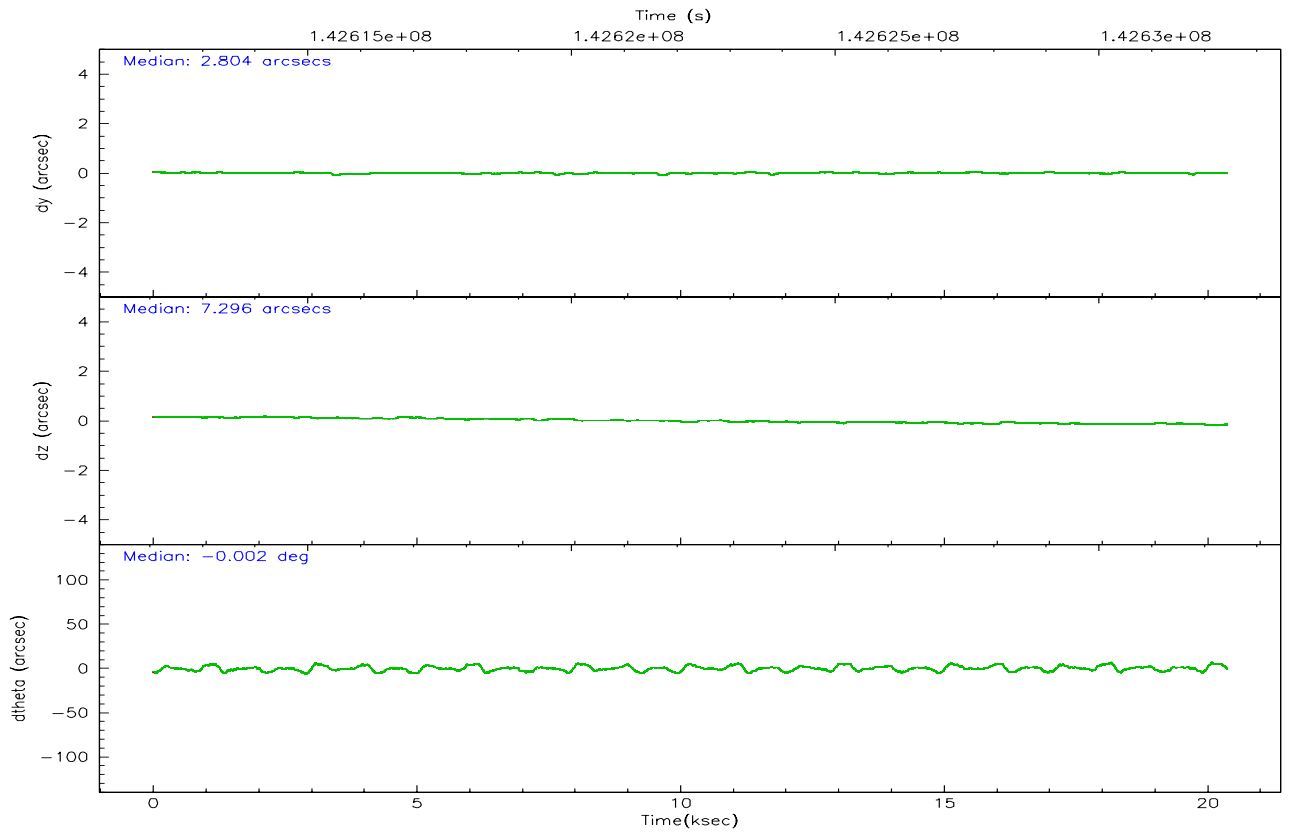
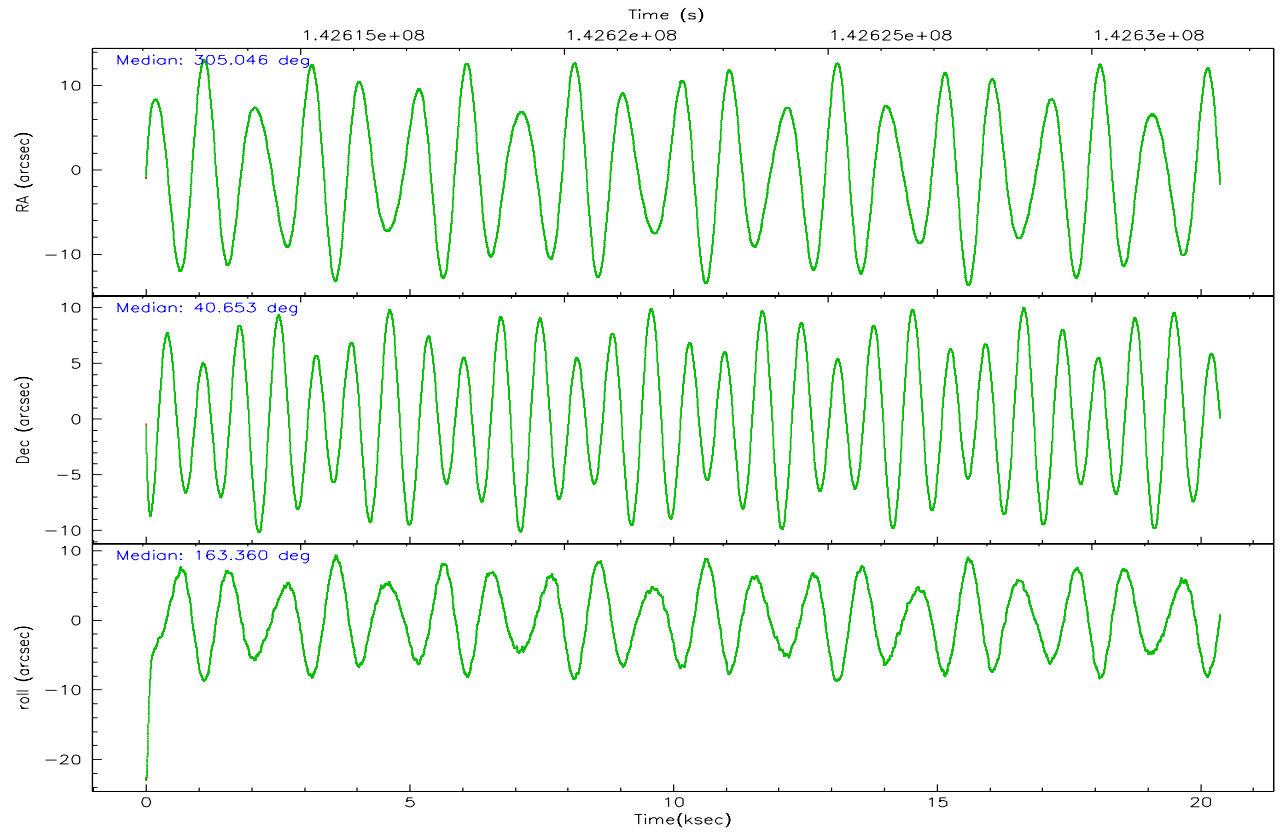
	ccd 0	ccd 1	ccd 2	ccd 3	ccd 6	ccd 7
grade 0 events	8716	7852	5970	5786	5055	3215
	8%	7%	5%	5%	4%	3%
grade 1 events	72	49	59	54	59	43
	0%	0%	0%	0%	0%	0%
grade 2 events	2734	2587	2565	2275	2272	11226
	2%	2%	2%	2%	2%	11%
grade 3 events	1315	1356	1109	1089	1206	2885
	1%	1%	0%	1%	1%	3%
grade 4 events	1191	1357	1086	1158	1175	2844
	1%	1%	0%	1%	1%	3%
grade 5 events	2906	3196	2594	3225	3454	7517
	2%	3%	2%	3%	3%	7%
grade 6 events	1861	2145	1774	1893	2053	23697
	1%	2%	1%	1%	1%	25%
grade 7 events	82509	83337	96683	90641	89707	42920
	81%	81%	86%	85%	85%	45%

2.2 Compared Parameters

Parameter	Planned	Actual	Parameter	Planned	Actual
Instrument	ACIS	ACIS	Obspar format version number	6	6
Detector	ACIS-012367	ACIS-012367	Obspar file type	PREDICTED	ACTUAL
Grating	NONE	NONE	Obspar update status	NONE	UPDATED
Data mode	VFAINT	VFAINT	Number of optional ACIS chips dropped	0	0
Observation mode	POINTING	POINTING	On-chip summing requested	N	N
Pointing RA	305.080372	305.0453007915545	Subarray requested	NONE	NONE
Pointing Dec	40.659391	40.65297770457373	Alternating exposures requested	N	N
Pointing Roll	163.129802	163.3613215945138	Primary exposure time	0.000000	3.2
SIM focus pos (mm)	-0.782348	-0.7809083437167272			
SIM defocus (mm)	0	0.001439871863259334			
SIM translation stage pos (mm)	-233.592463	-233.5874344608287			
SIM translation stage offset (mm)	0	-0.005018542100998502			
Observation start time	142612432.184000	142611377.32693			
Observation start date	2002-07-09T14:32:48	2002-07-09T14:16:17			
Observation end time	142632432.184000	142633341.02783			
Observation end date	2002-07-09T20:06:08	2002-07-09T20:22:21			
Read mode	TIMED	TIMED			

2.3 Aspect



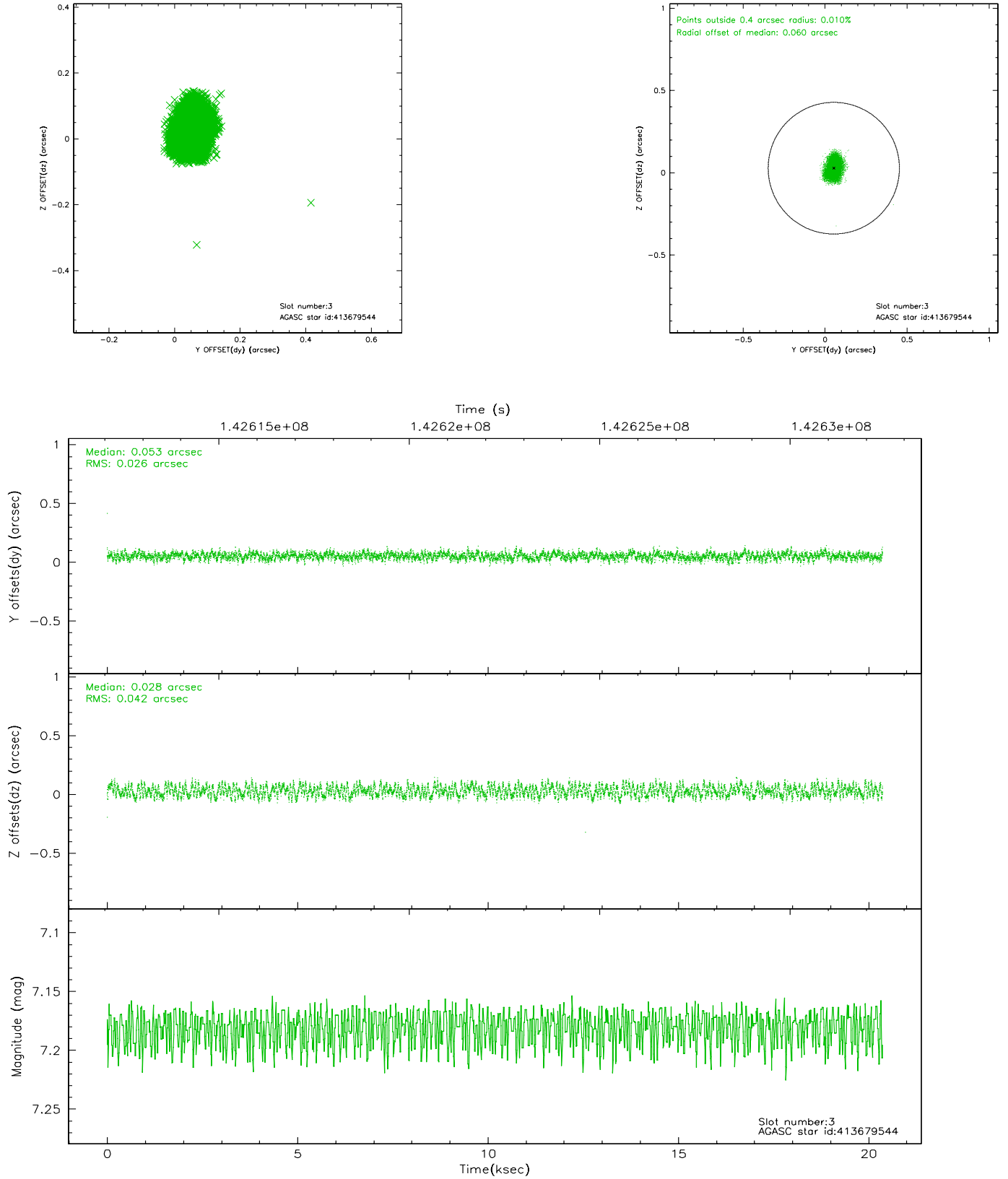


Slot Statistics

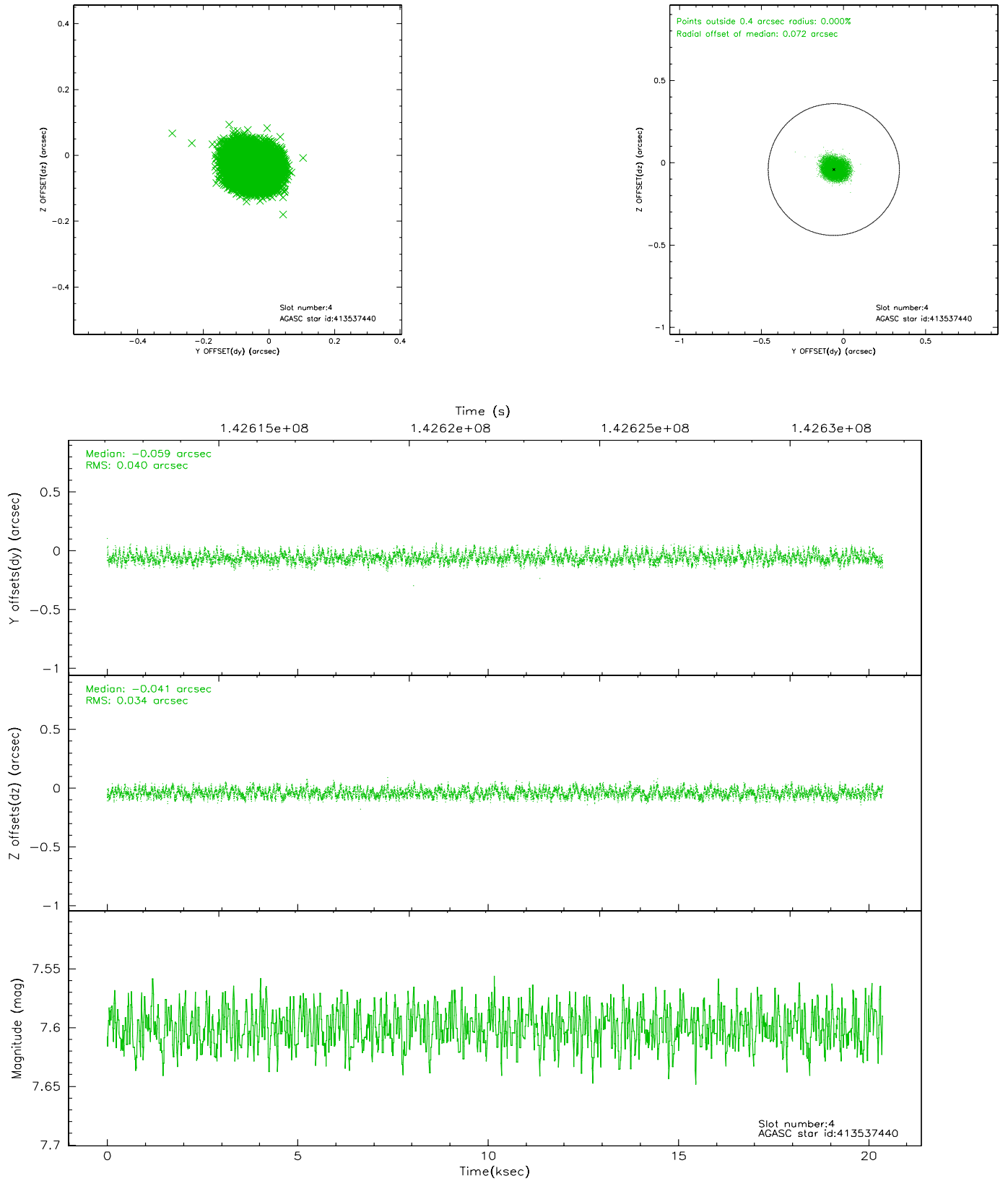
slot	status	id	mag	n_pts	med_dy	med_dz	dr1	dr2	ra	dec	mean_y	mean_z
0	FID	ACIS-I-1	7.25	4970	-0.051	-0.084	0.011	0.020	0.000000	0.000000	936.95	-830.78
1	FID	ACIS-I-3	7.45	4970	0.007	0.165	0.018	0.030	0.000000	0.000000	54.61	-963.93
2	FID	ACIS-I-5	7.22	4970	-0.045	-0.010	0.024	0.043	0.000000	0.000000	-1811.25	1066.65
3	GUIDE	413679544	7.18	9938	0.053	0.028	0.054	0.081	305.777919	40.800458	-1668.66	-1044.36
4	GUIDE	413537440	7.60	9937	-0.059	-0.041	0.057	0.089	304.302199	40.591389	1968.08	843.09
5	GUIDE	413669792	8.04	9937	0.063	0.057	0.054	0.088	306.075459	41.023146	-2200.72	-2051.52
6	GUIDE	413543888	8.19	9939	-0.041	-0.013	0.057	0.088	304.596711	40.387769	986.99	1317.55
7	GUIDE	413544576	8.39	9936	-0.020	-0.028	0.047	0.077	304.435217	40.506862	1533.38	1032.46

2.4 Star Slots

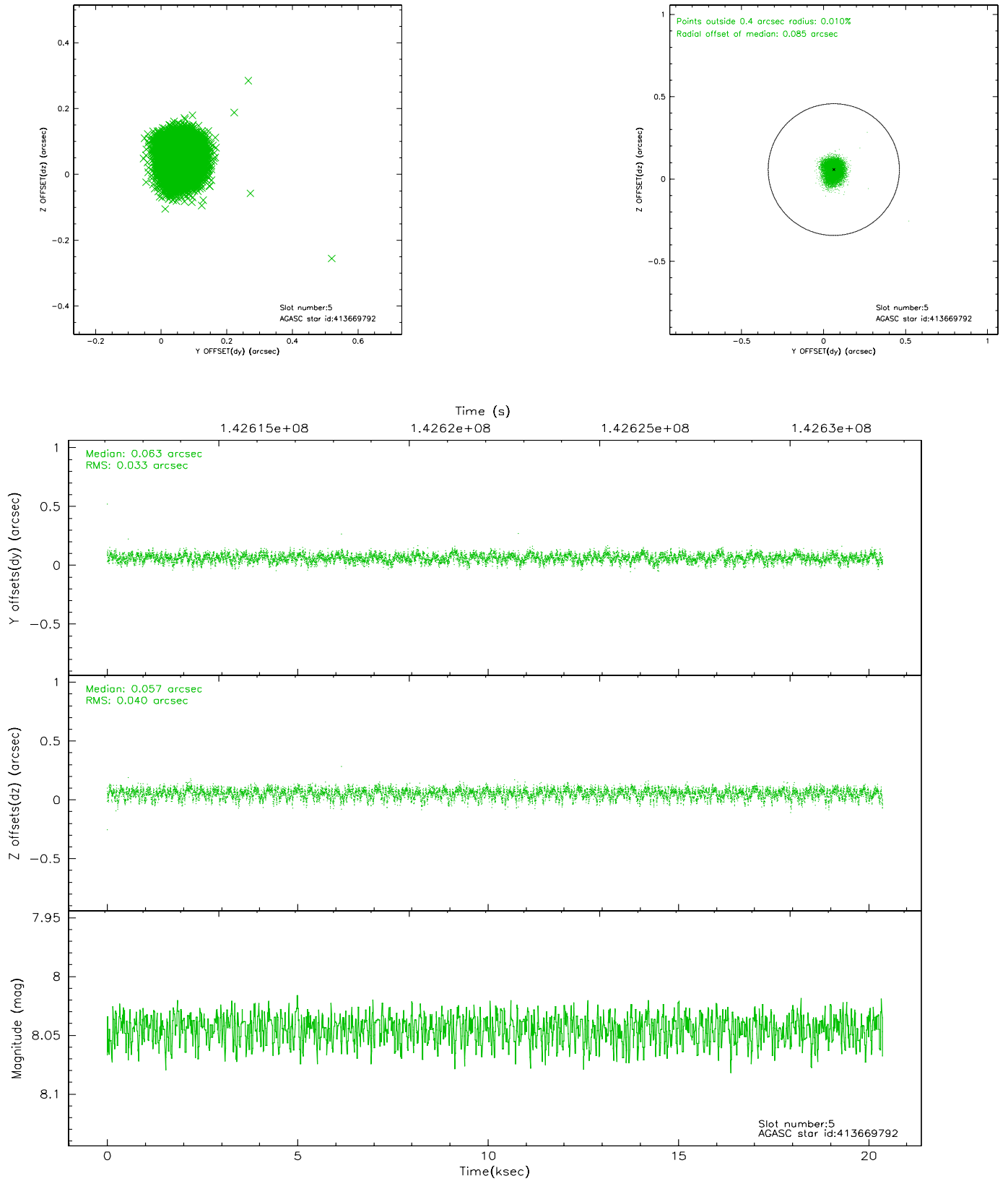
2.4.1 Slot 3



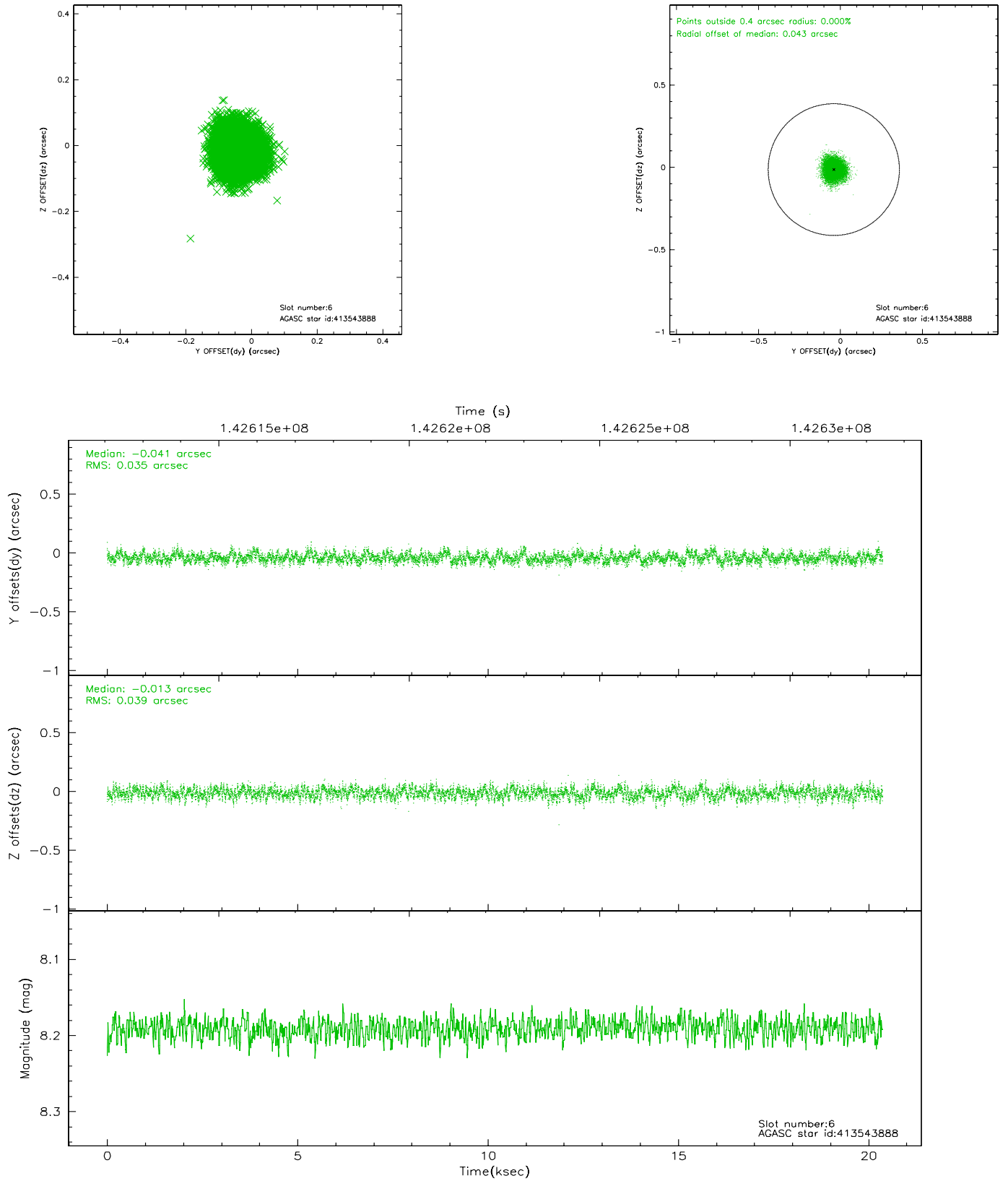
2.4.2 Slot 4



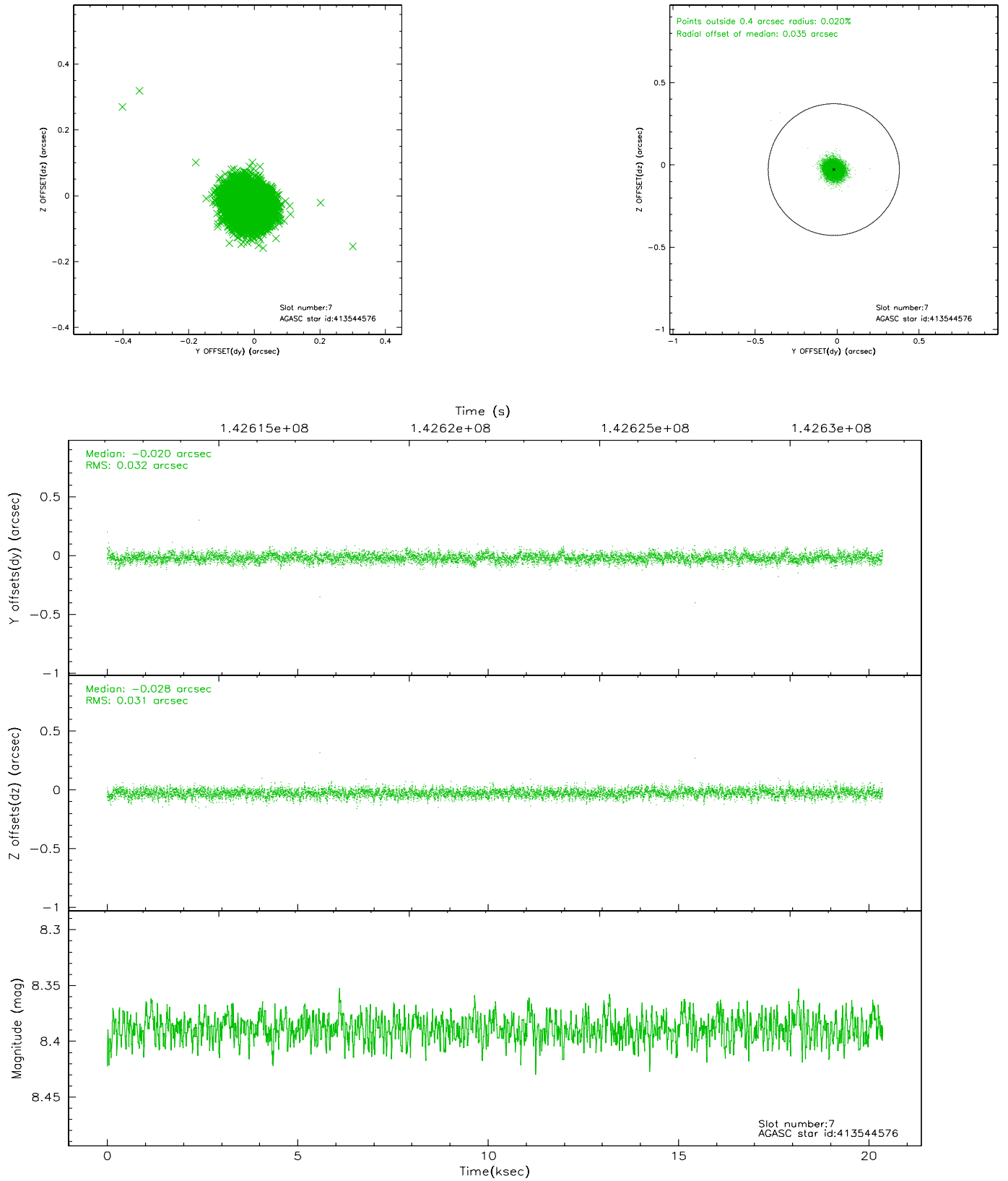
2.4.3 Slot 5



2.4.4 Slot 6

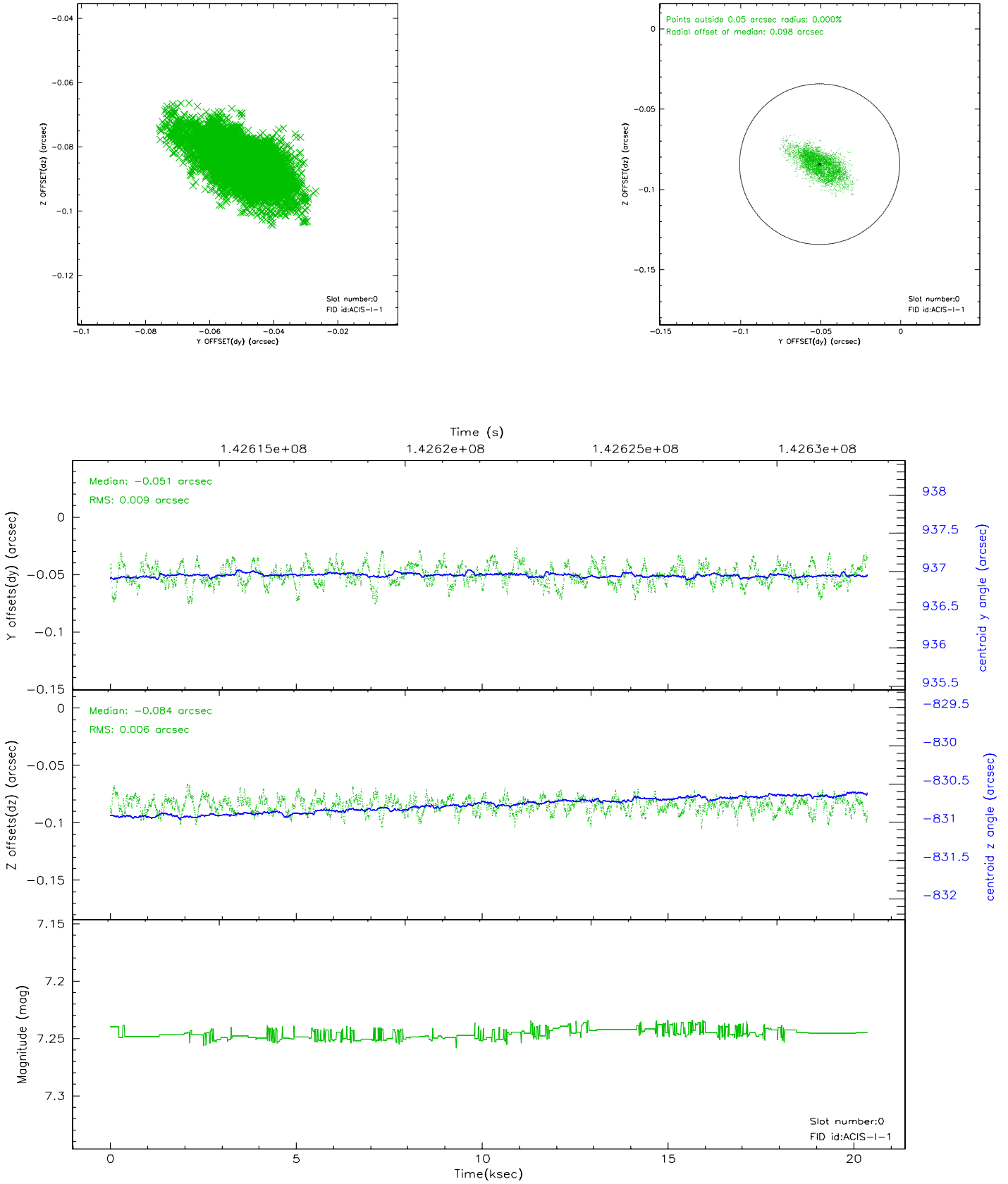


2.4.5 Slot 7

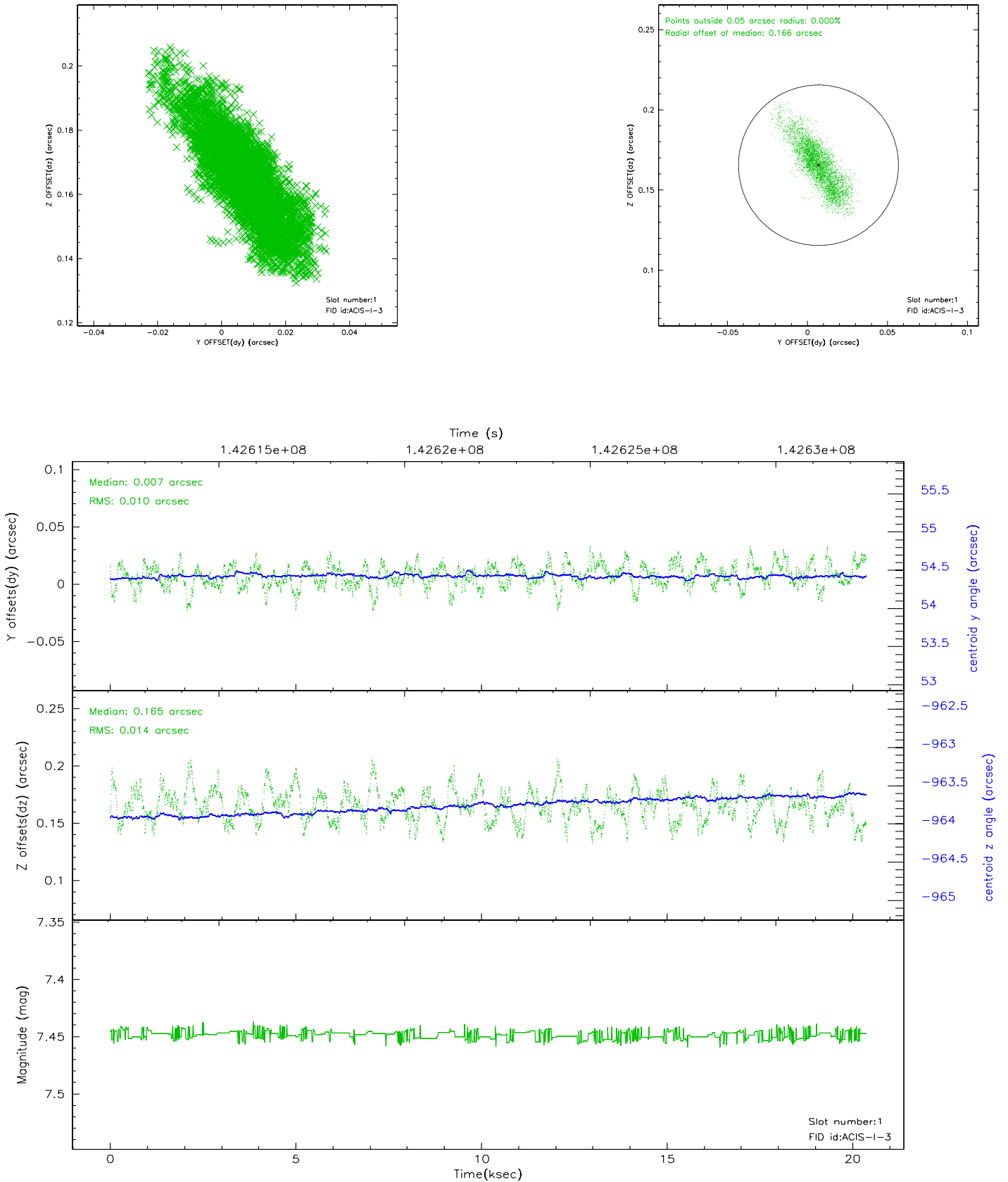


2.5 FID Slots

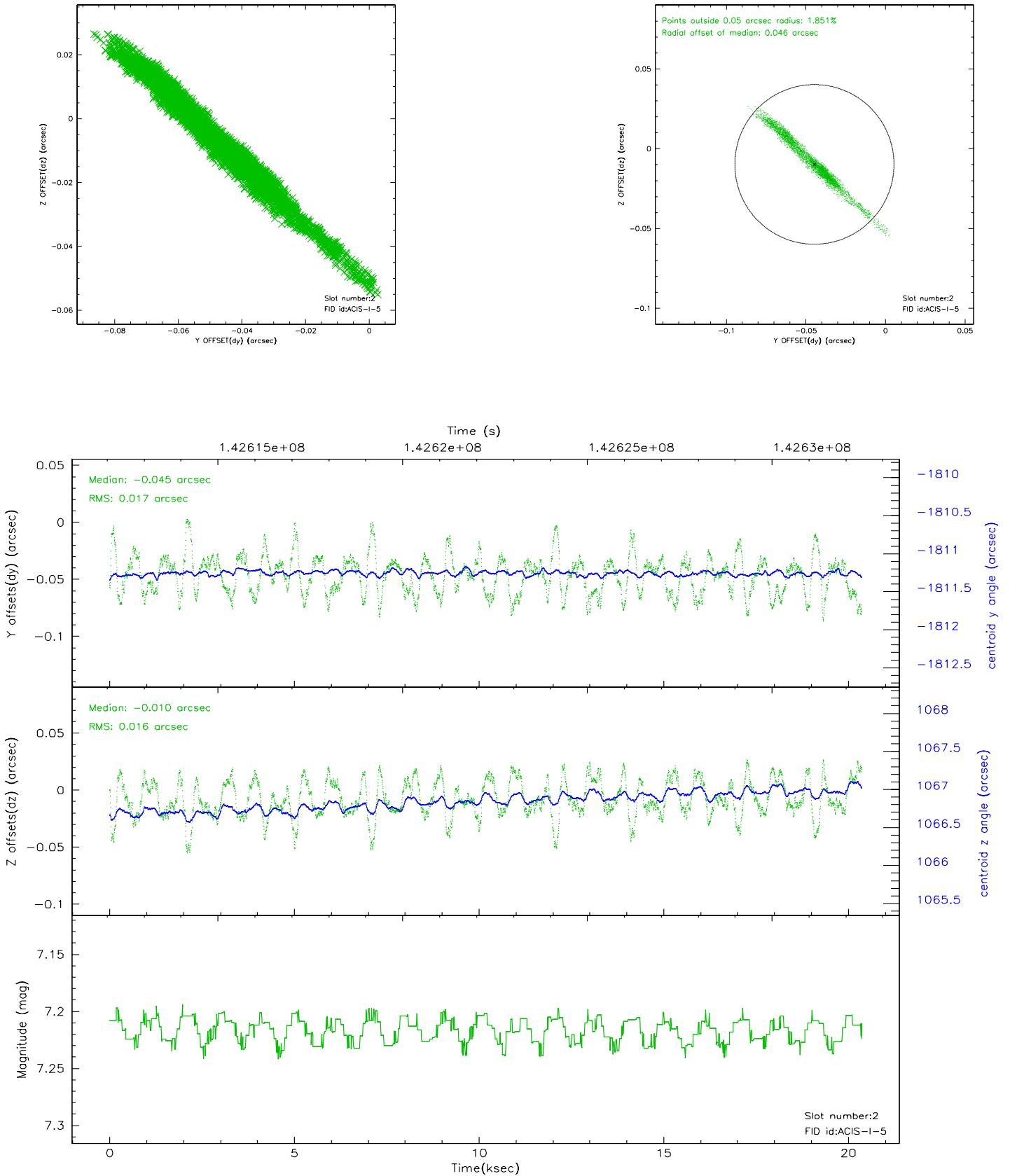
2.5.1 Slot 0



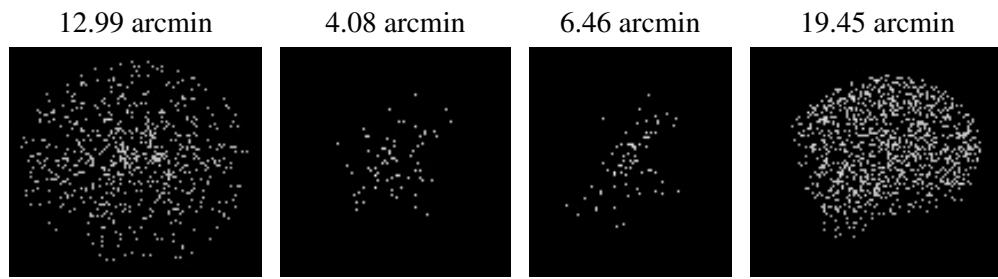
2.5.2 Slot 1



2.5.3 Slot 2



3 Point Sources



A Summary

A.1 Status

V&V Scientist	Beth Sundheim
V&V Date (YYYY-MM-DD)	2006.09.24
V&V Edition	1
V&V Disposition and Status	OK
V&V Charge Time	19.964

A.2 Comments