

V&V Reference Report

L2 ASCDS Version : 7.6.10

Observation 2556 - L2 Version 001
Chandra X-Ray Center

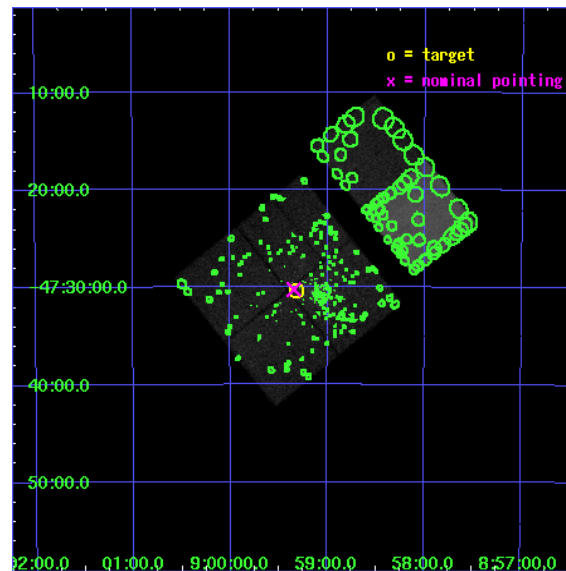
L2 Processing Date : Jan 18 2007

Contents

1	Front	2
2	OBI	3
2.1	OBI	3
2.1.1	Images	3
2.1.2	Bias	3
2.1.3	Parameters	4
2.1.4	Events	4
2.2	Compared Parameters	5
2.3	Aspect	6
2.4	Star Slots	9
2.4.1	Slot 3	9
2.4.2	Slot 4	10
2.4.3	Slot 5	11
2.4.4	Slot 6	12
2.4.5	Slot 7	13
2.5	FID Slots	14
2.5.1	Slot 0	14
2.5.2	Slot 1	15
2.5.3	Slot 2	16
3	Point Sources	17
A	Summary	18
A.1	Status	18
A.2	Comments	18

1 Front

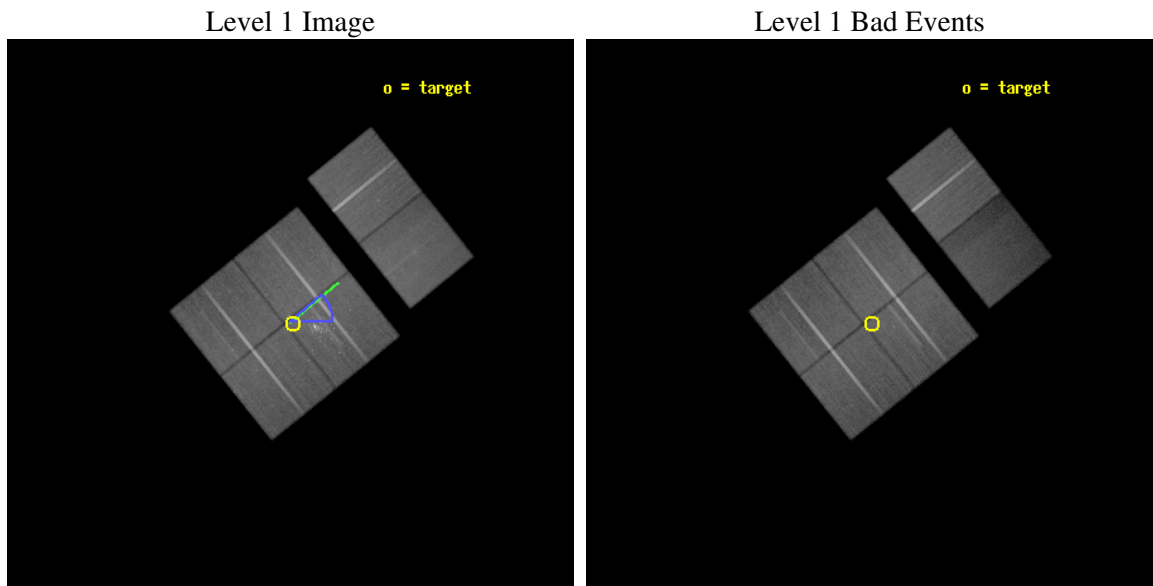
seq_num	200164
obs_id	2556
title	HIGH ENERGY EMISSION FROM THE YOUNG MASSIVE CLUSTER RCW 38
observer	Dr. Scott Wolk
object	RCW 38
dtcycle	0
cycle	P
ra_targ	134.83
dec_targ	-47.506111
ra_nom	134.83614051433
dec_nom	-47.503894566054
roll_nom	51.187574937087
revision	2
ontime	97955.077160582
livetime	96714.710992108
ontime0	97945.354239956
ontime1	97951.836220294
ontime2	97948.595279962
ontime3	97955.077160582
ontime6	97942.113279745
ontime7	97945.354319721
l2events	474365



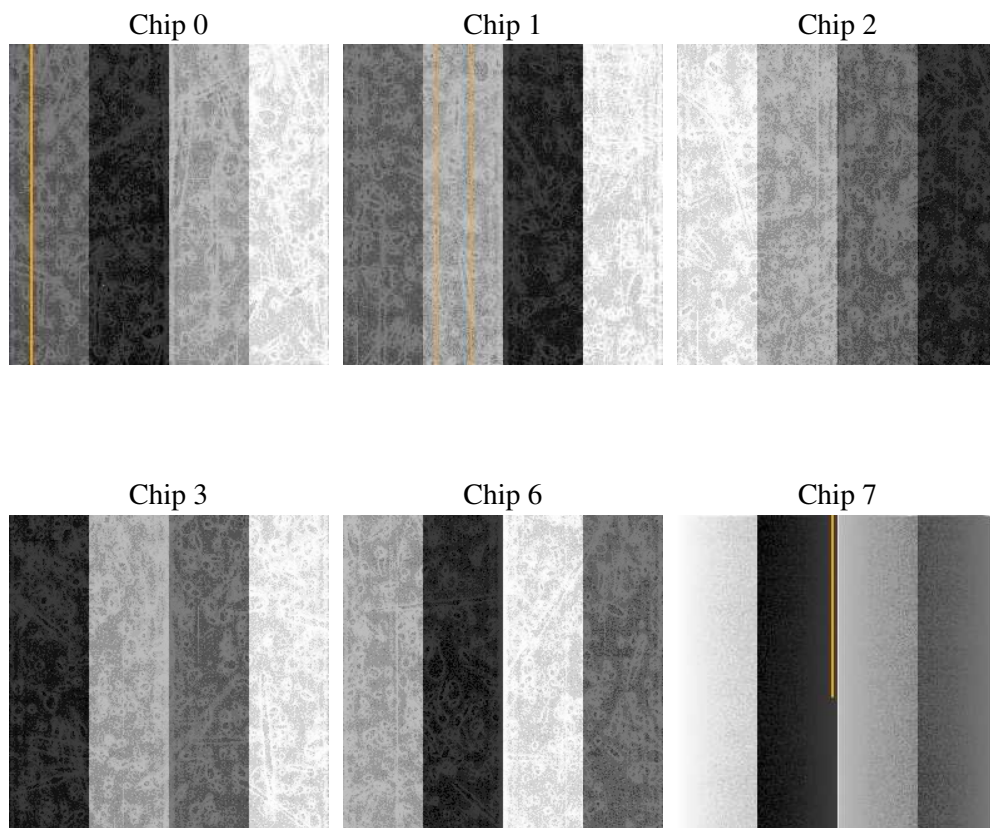
2 OBI

2.1 OBI

2.1.1 Images



2.1.2 Bias



2.1.3 Parameters

obi_num	0
ascdsver	7.6.10
caldsver	3.3.0
date	2007-01-18T05:58:02
revision	2

sched_exp_time	98000.000000
ontime	97955.077160582
ontime0	97945.354239956
ontime1	97951.836220294
ontime2	97948.595279962
ontime3	97955.077160582
ontime6	97942.113279745
ontime7	97945.354319721
l1events	3018084

2.1.4 Events

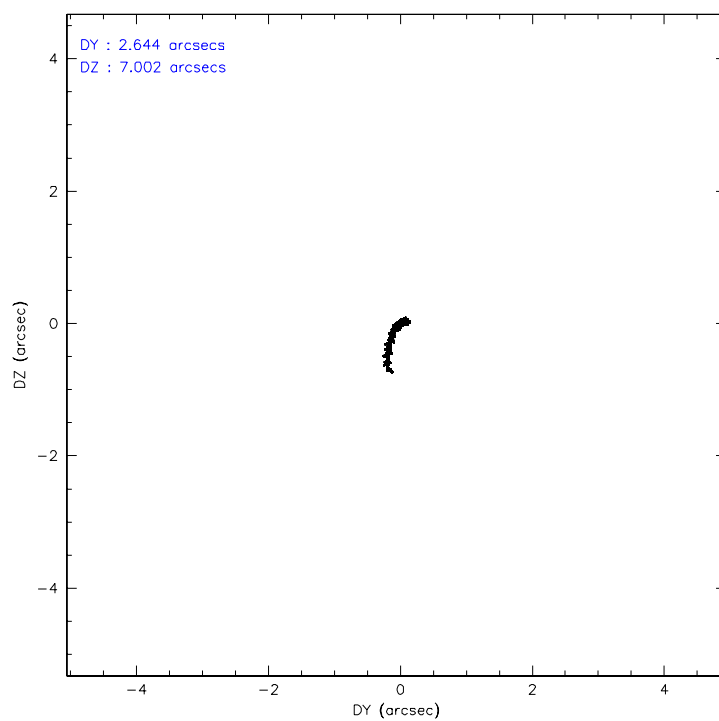
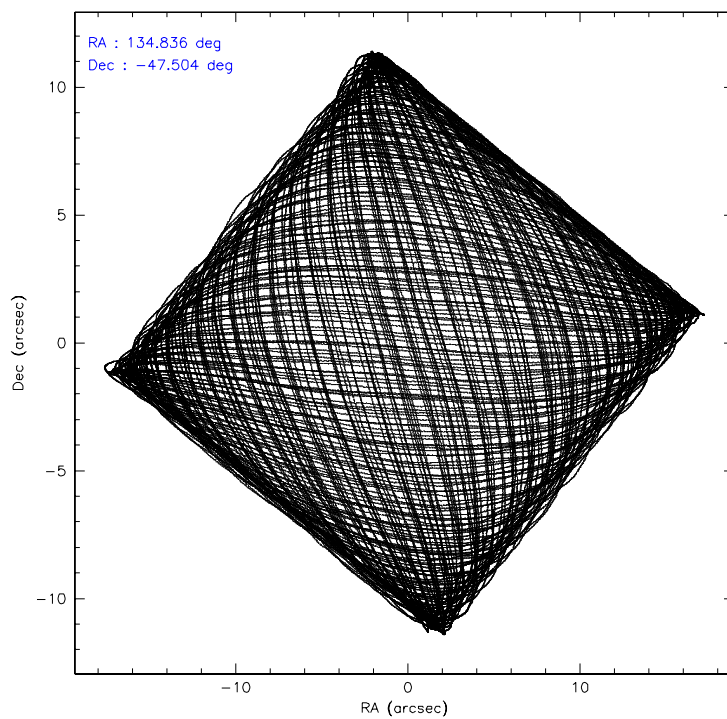
	ccd 0	ccd 1	ccd 2	ccd 3	ccd 6	ccd 7
level 1 events	476686	469957	539085	547736	523246	461374
rejected events	425769	415919	487029	461146	471529	229450
rejected %	89%	88%	90%	84%	90%	49%

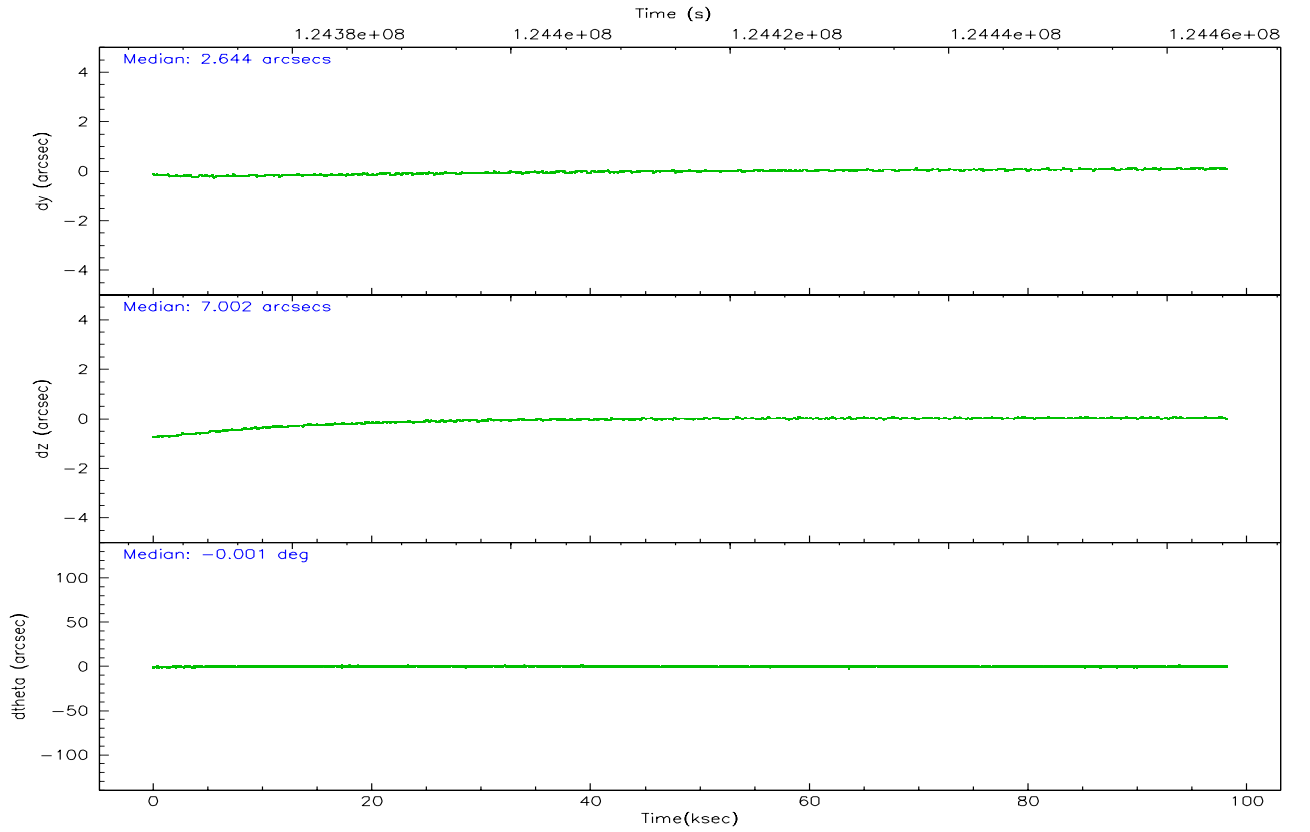
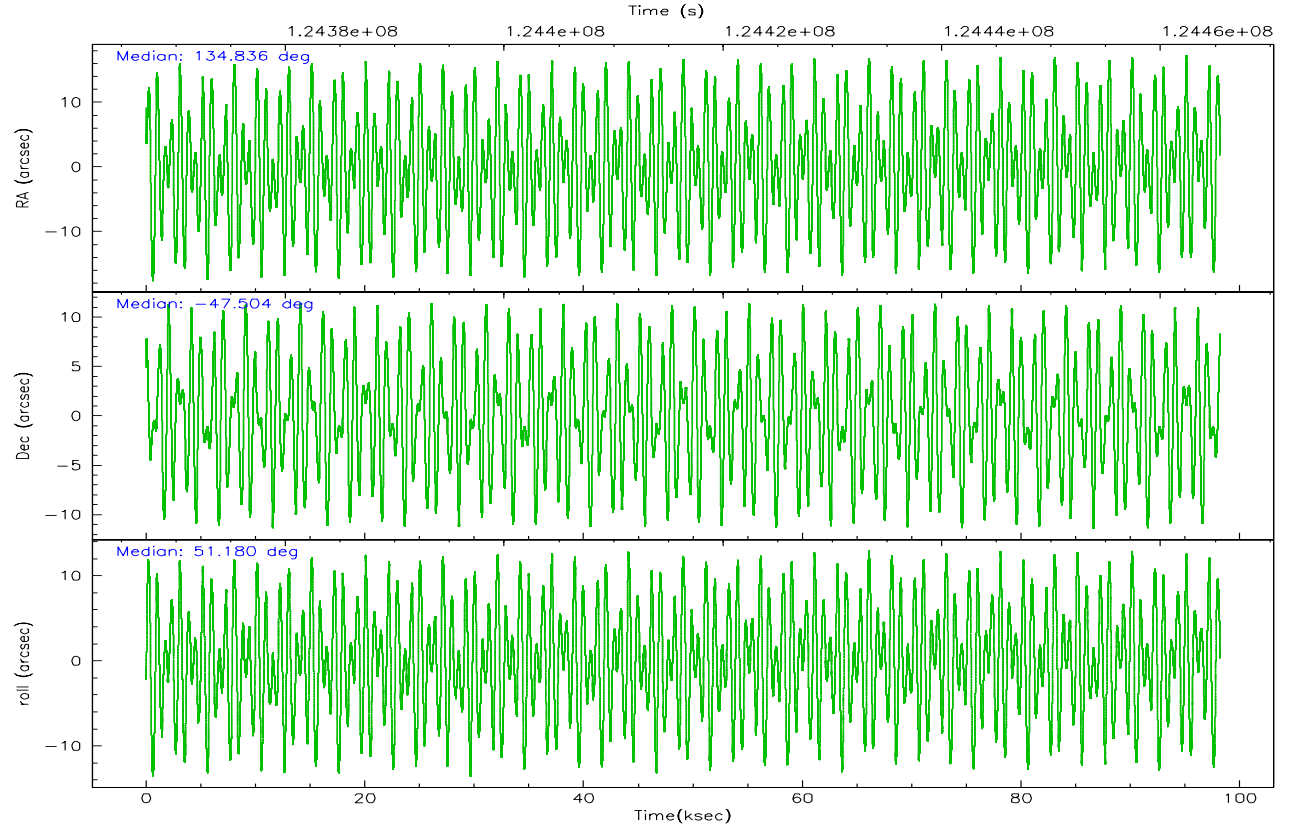
	ccd 0	ccd 1	ccd 2	ccd 3	ccd 6	ccd 7
grade 0 events	19177	19719	20899	47974	19056	25367
	4%	4%	3%	8%	3%	5%
grade 1 events	222	225	227	506	284	501
	0%	0%	0%	0%	0%	0%
grade 2 events	11501	11181	11657	14549	10907	48508
	2%	2%	2%	2%	2%	10%
grade 3 events	5729	6376	5257	6852	5674	23039
	1%	1%	0%	1%	1%	4%
grade 4 events	5367	6328	5391	6802	5624	22933
	1%	1%	1%	1%	1%	4%
grade 5 events	13834	15139	12822	15230	16482	49154
	2%	3%	2%	2%	3%	10%
grade 6 events	9148	10434	8852	10414	10463	112082
	1%	2%	1%	1%	1%	24%
grade 7 events	411708	400555	473980	445409	454756	179790
	86%	85%	87%	81%	86%	38%

2.2 Compared Parameters

Parameter	Planned	Actual	Parameter	Planned	Actual
Instrument	ACIS	ACIS	Obspar format version number	6	6
Detector	ACIS-012367	ACIS-012367	Obspar file type	PREDICTED	ACTUAL
Grating	NONE	NONE	Obspar update status	NONE	UPDATED
Data mode	VFAINT	VFAINT	Number of optional ACIS chips dropped	0	0
Observation mode	POINTING	POINTING	On-chip summing requested	N	N
Pointing RA	134.829990	134.836140514331	Subarray requested	NONE	NONE
Pointing Dec	-47.530991	-47.5038945660536	Alternating exposures requested	N	N
Pointing Roll	50.974350	51.1875749370868	Primary exposure time	0.000000	3.2
Roll angle	70.000000	70.000000			
Roll tolerance	20.000000	20.000000			
Roll constraint allows 180D rotation	N	N			
SIM focus pos (mm)	-0.782348	-0.7809083437167272			
SIM defocus (mm)	0	0.001439871863259334			
SIM translation stage pos (mm)	-233.592463	-233.5874344608287			
SIM translation stage offset (mm)	0	-0.005018542100998502			
Observation start time	124367457.184000	124366478.57462			
Observation start date	2001-12-10T10:29:53	2001-12-10T10:14:38			
Observation end time	124465457.184000	124466025.55361			
Observation end date	2001-12-11T13:43:13	2001-12-11T13:53:45			
Read mode	TIMED	TIMED			

2.3 Aspect



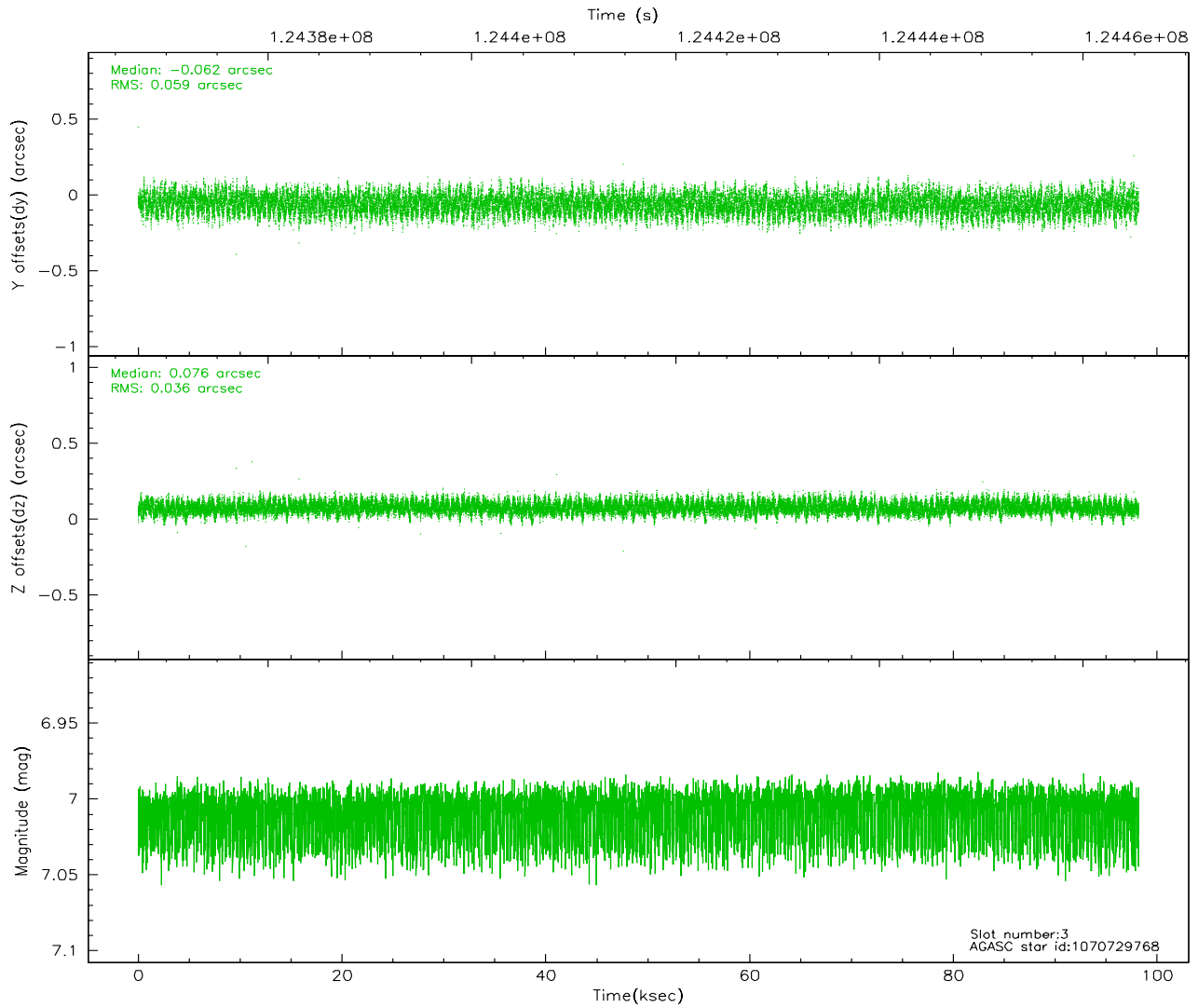
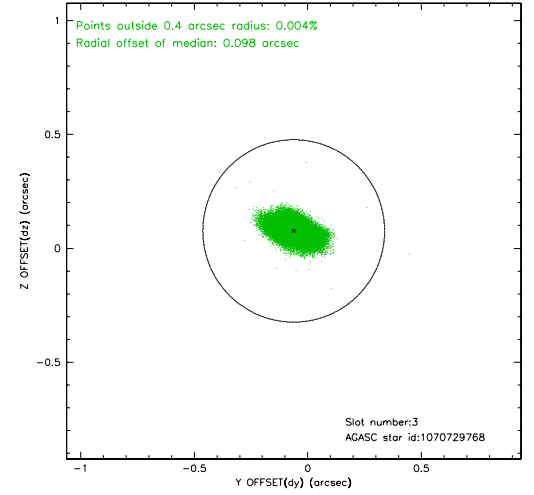
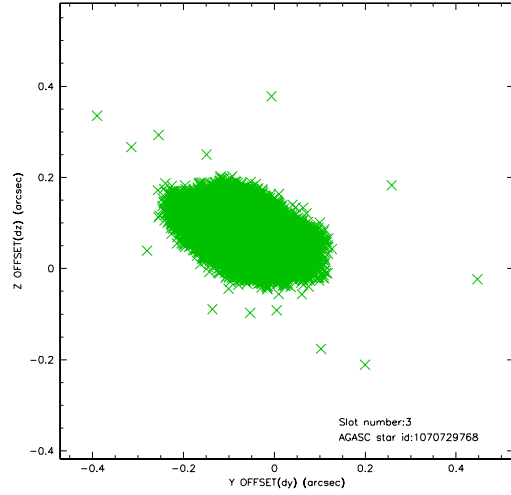


Slot Statistics

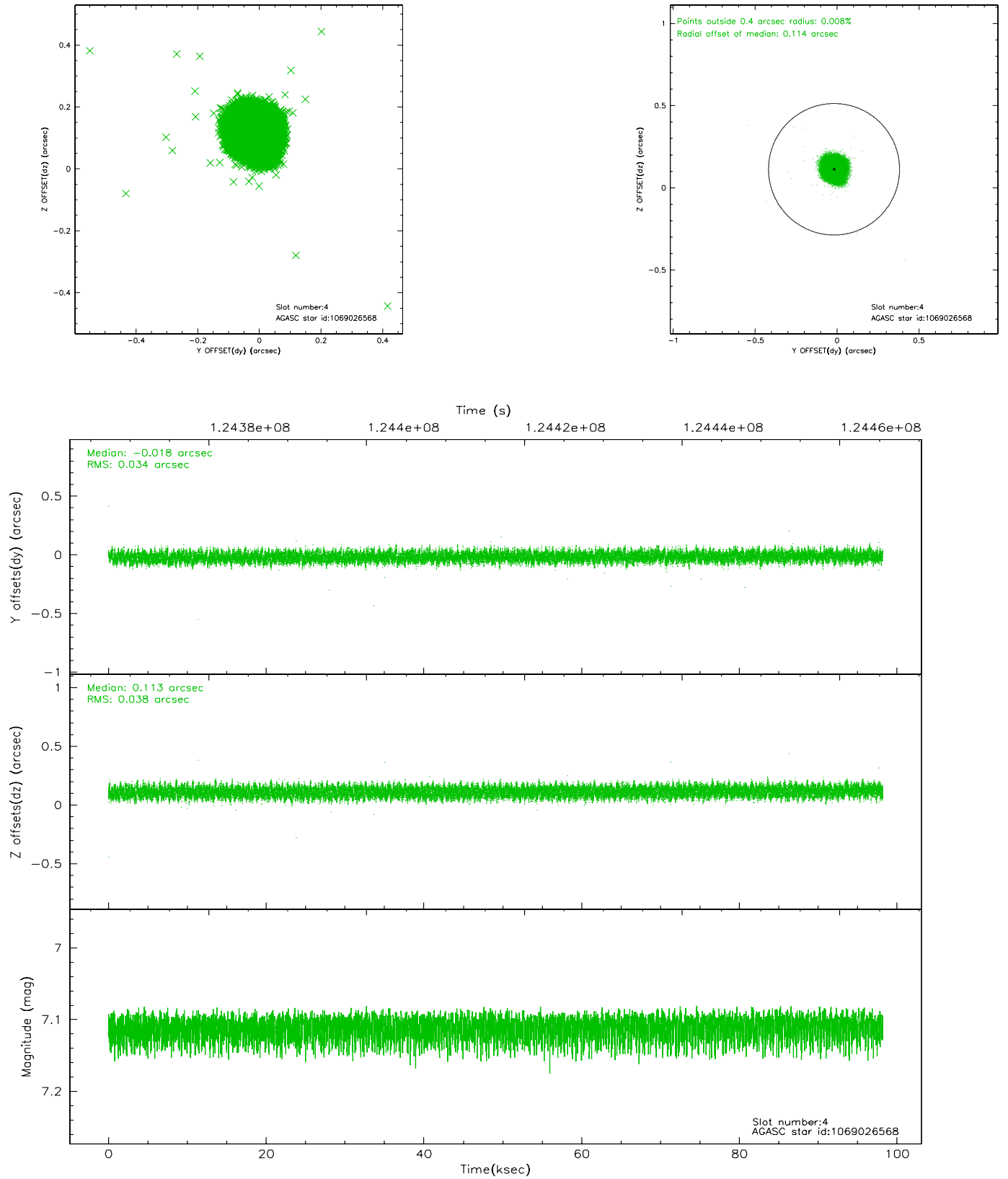
slot	status	id	mag	n_pts	med_dy	med_dz	dr1	dr2	ra	dec	mean_y	mean_z
0	FID	ACIS-I-1	7.25	23925	-0.024	0.046	0.007	0.012	0.000000	0.000000	937.14	-830.28
1	FID	ACIS-I-5	7.24	23913	-0.013	0.042	0.007	0.012	0.000000	0.000000	-1810.97	1067.30
2	FID	ACIS-I-6	7.26	23932	-0.054	-0.018	0.008	0.016	0.000000	0.000000	402.80	1711.60
3	GUIDE	1070729768	7.01	47793	-0.062	0.076	0.073	0.122	136.024083	-47.441445	2063.68	-2069.23
4	GUIDE	1069026568	7.11	47874	-0.018	0.113	0.055	0.084	134.843519	-48.291320	-2106.14	-1748.88
5	GUIDE	1070730464	8.59	47862	-0.099	0.084	0.075	0.125	135.874457	-47.404157	1943.64	-1699.84
6	GUIDE	1069040352	8.83	47862	0.091	-0.154	0.083	0.128	133.610751	-47.692863	-2331.54	1913.28
7	GUIDE	1069037472	8.33	47866	0.086	-0.122	0.070	0.118	133.779767	-47.607540	-1833.04	1795.67

2.4 Star Slots

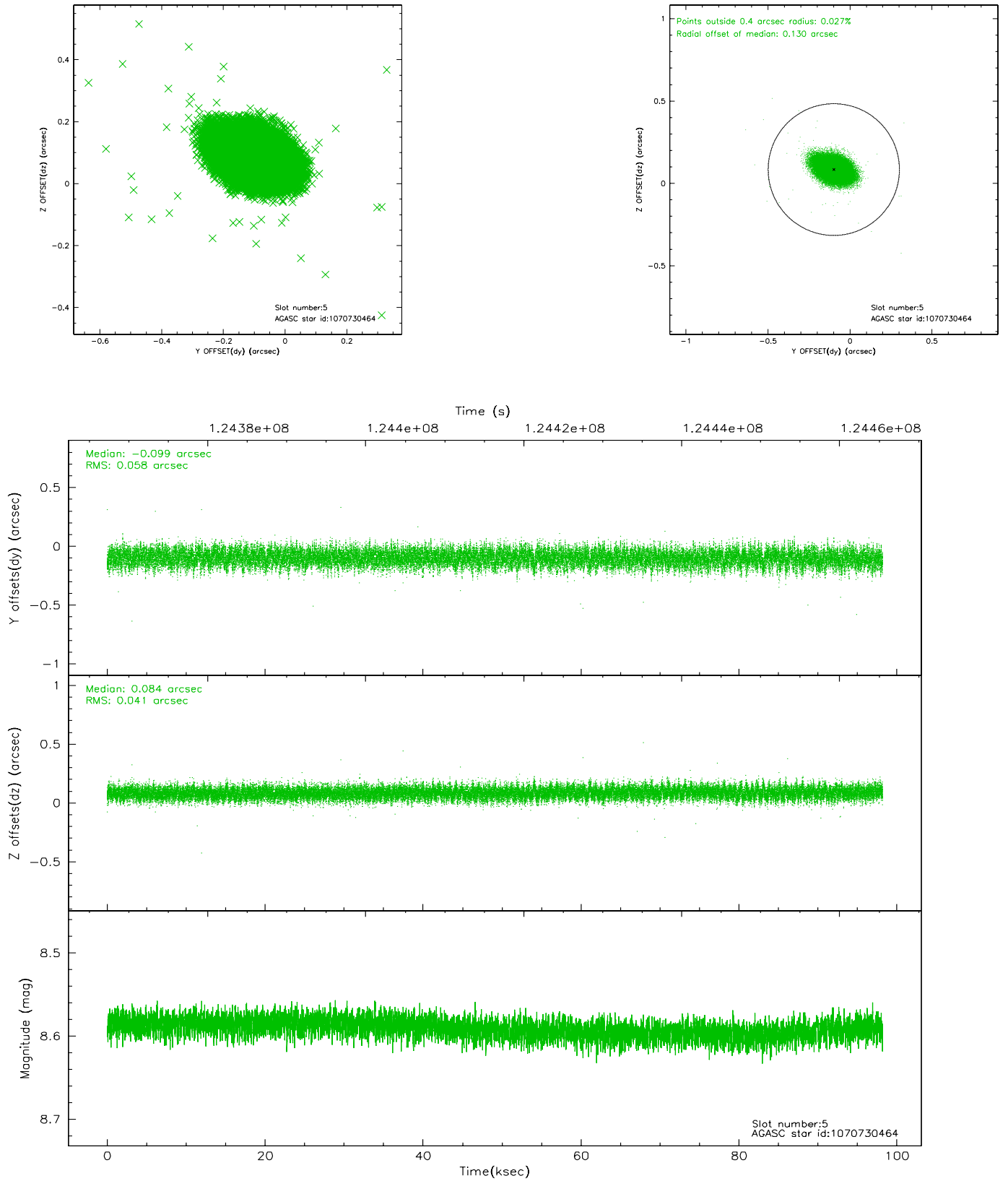
2.4.1 Slot 3



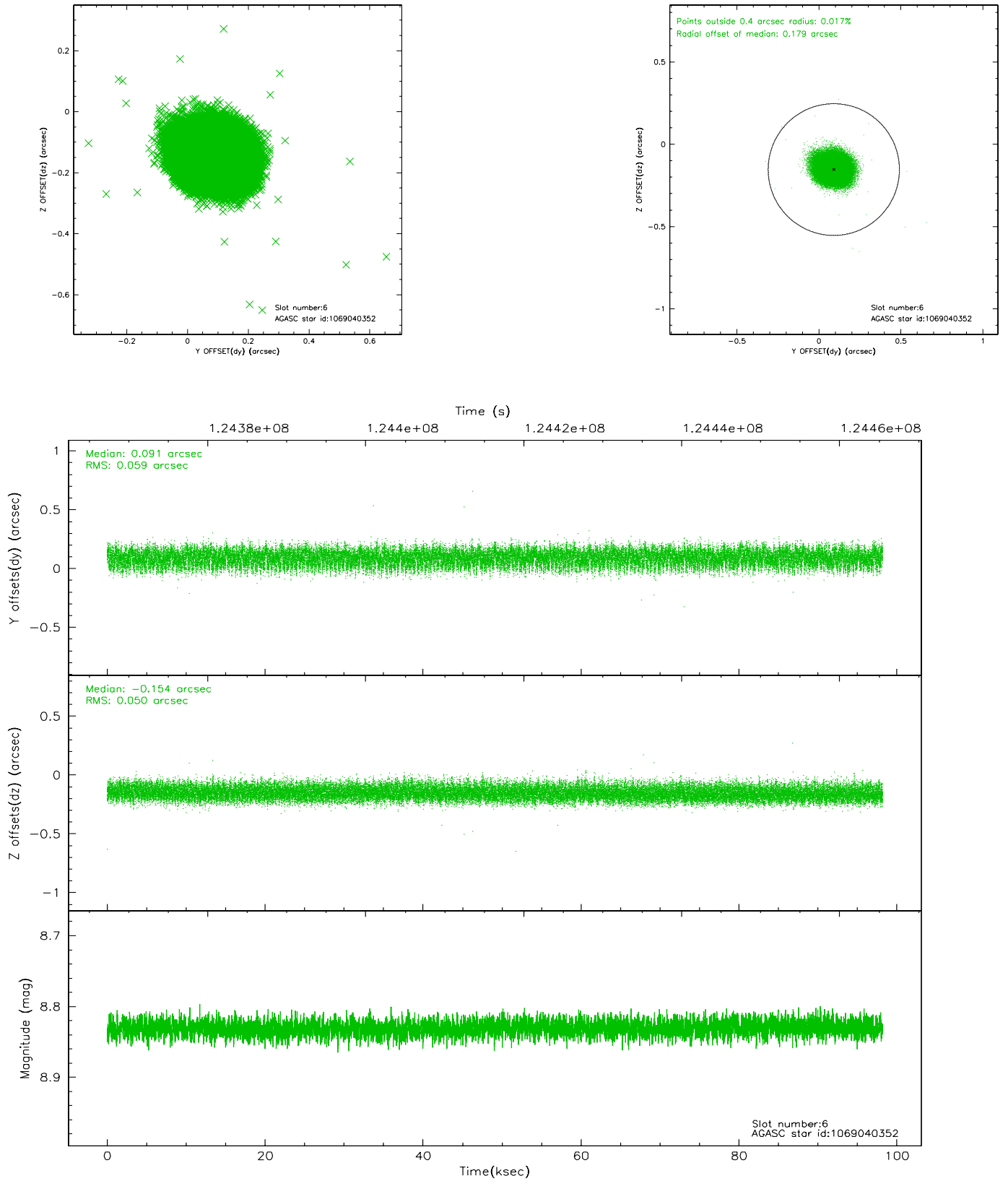
2.4.2 Slot 4



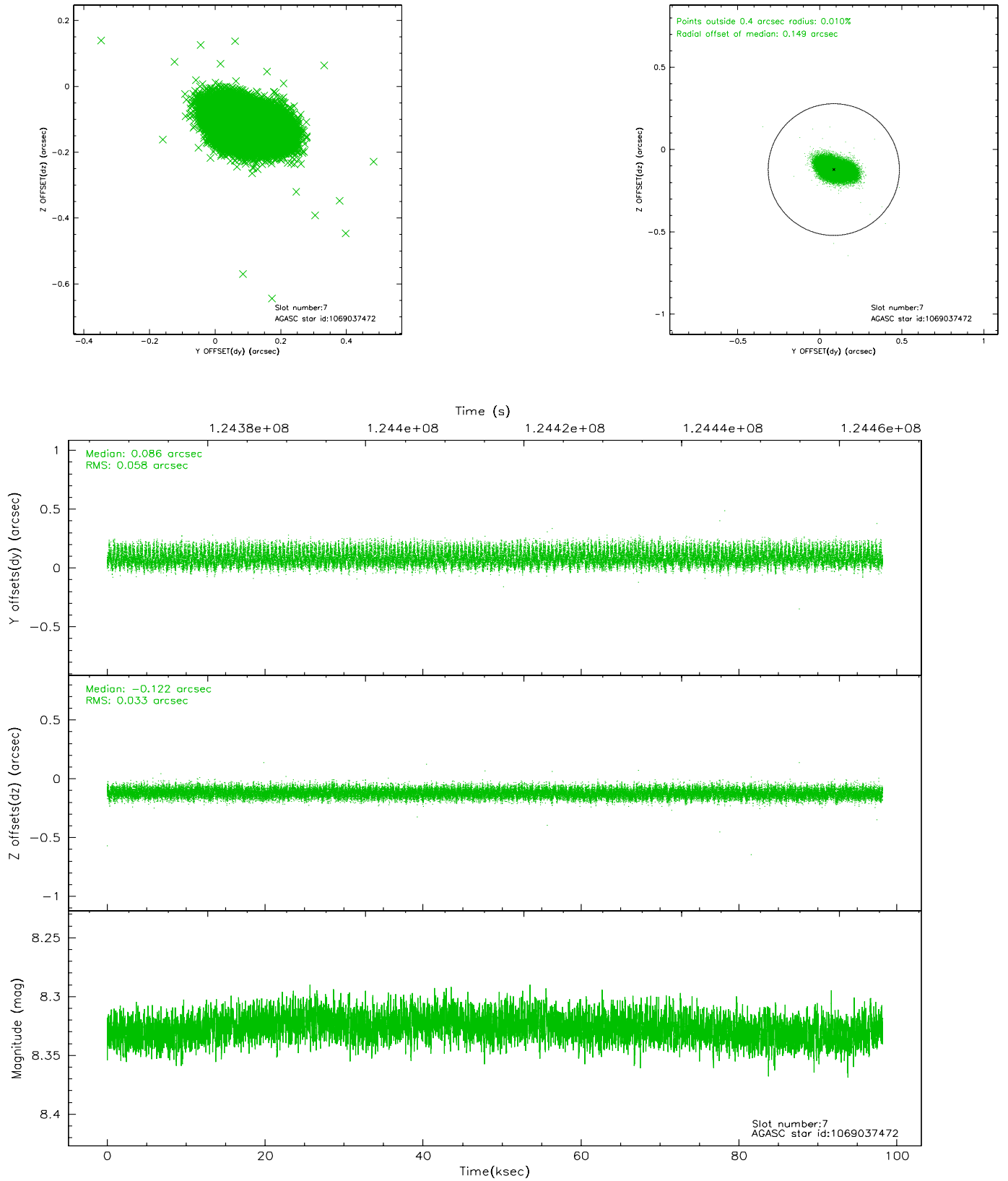
2.4.3 Slot 5



2.4.4 Slot 6

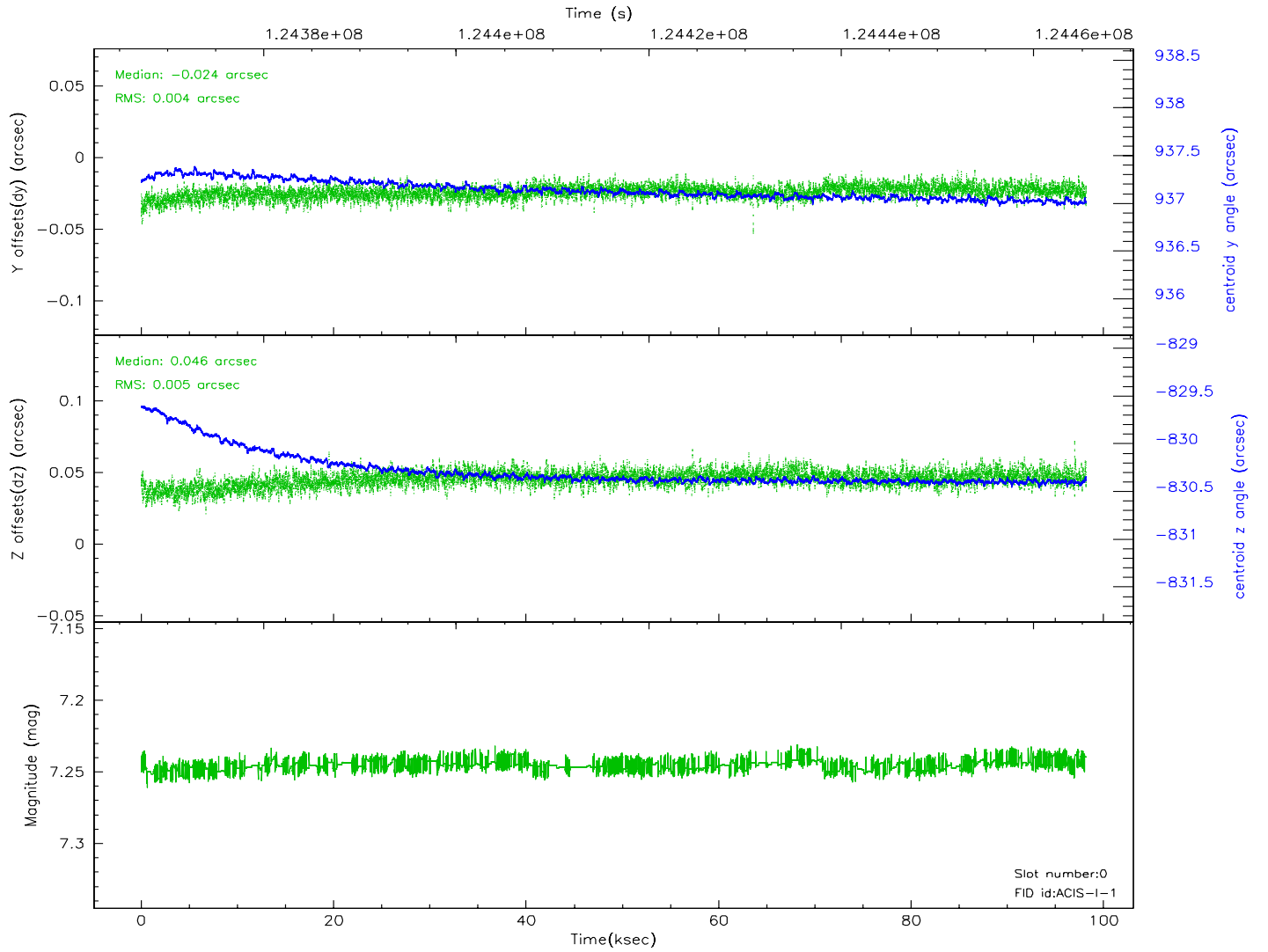
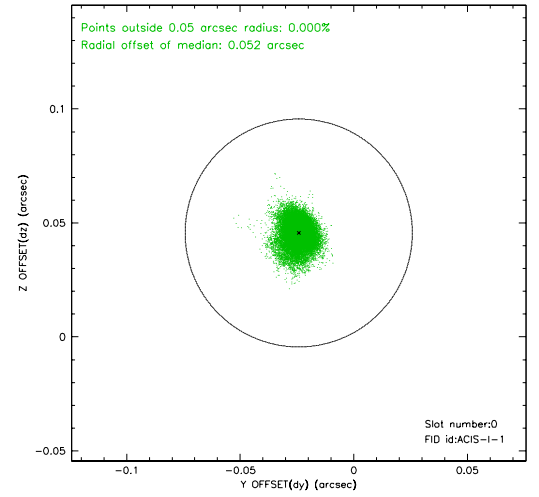
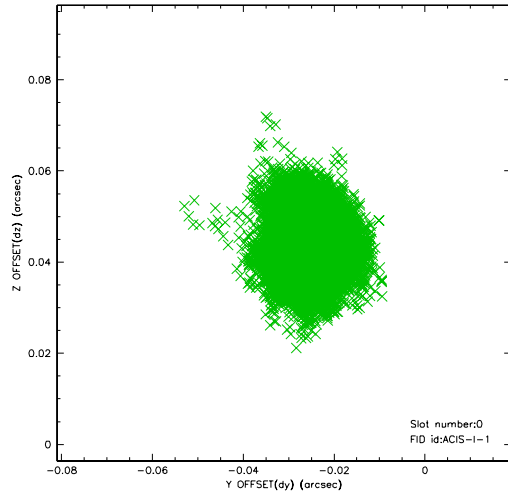


2.4.5 Slot 7

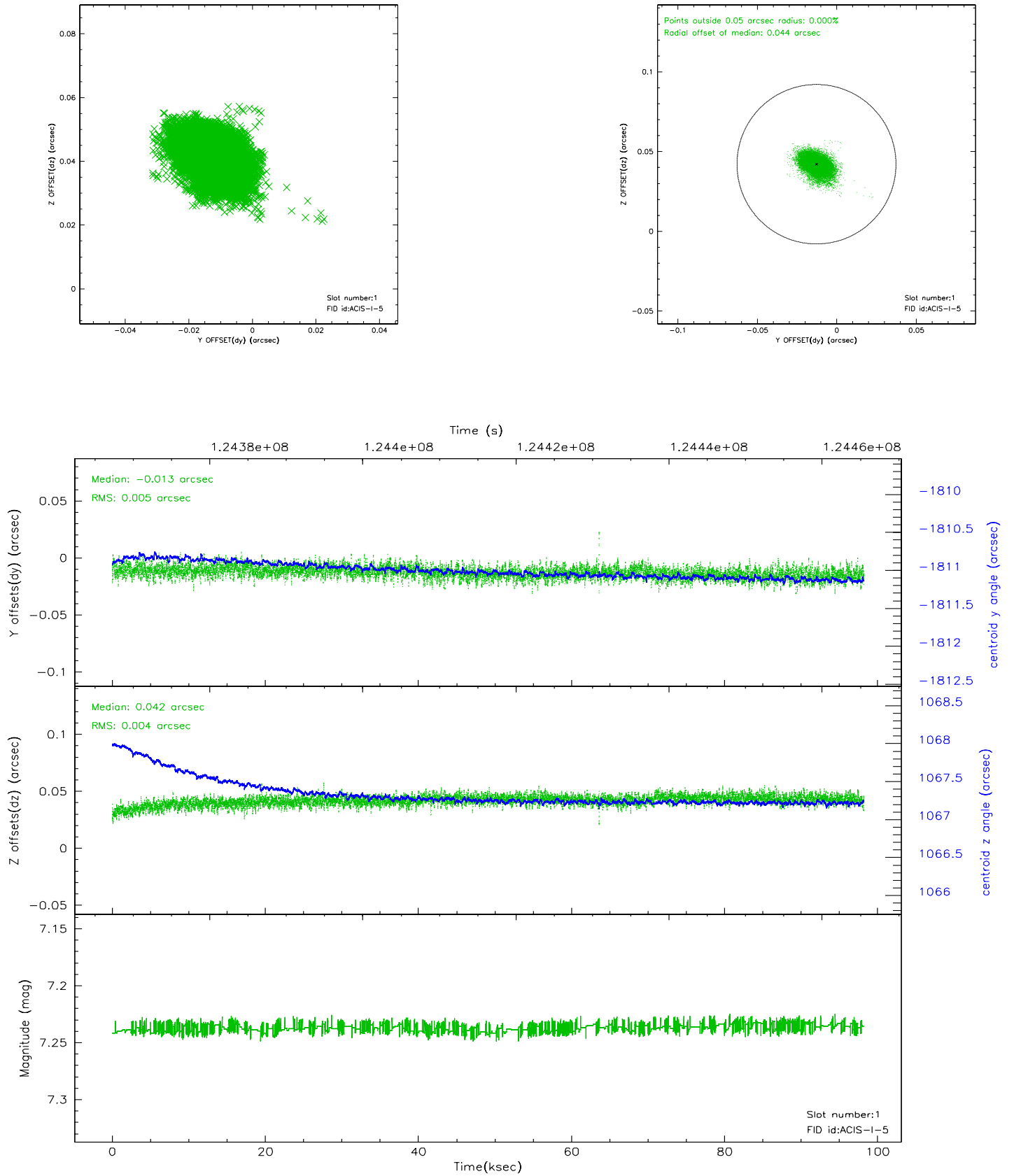


2.5 FID Slots

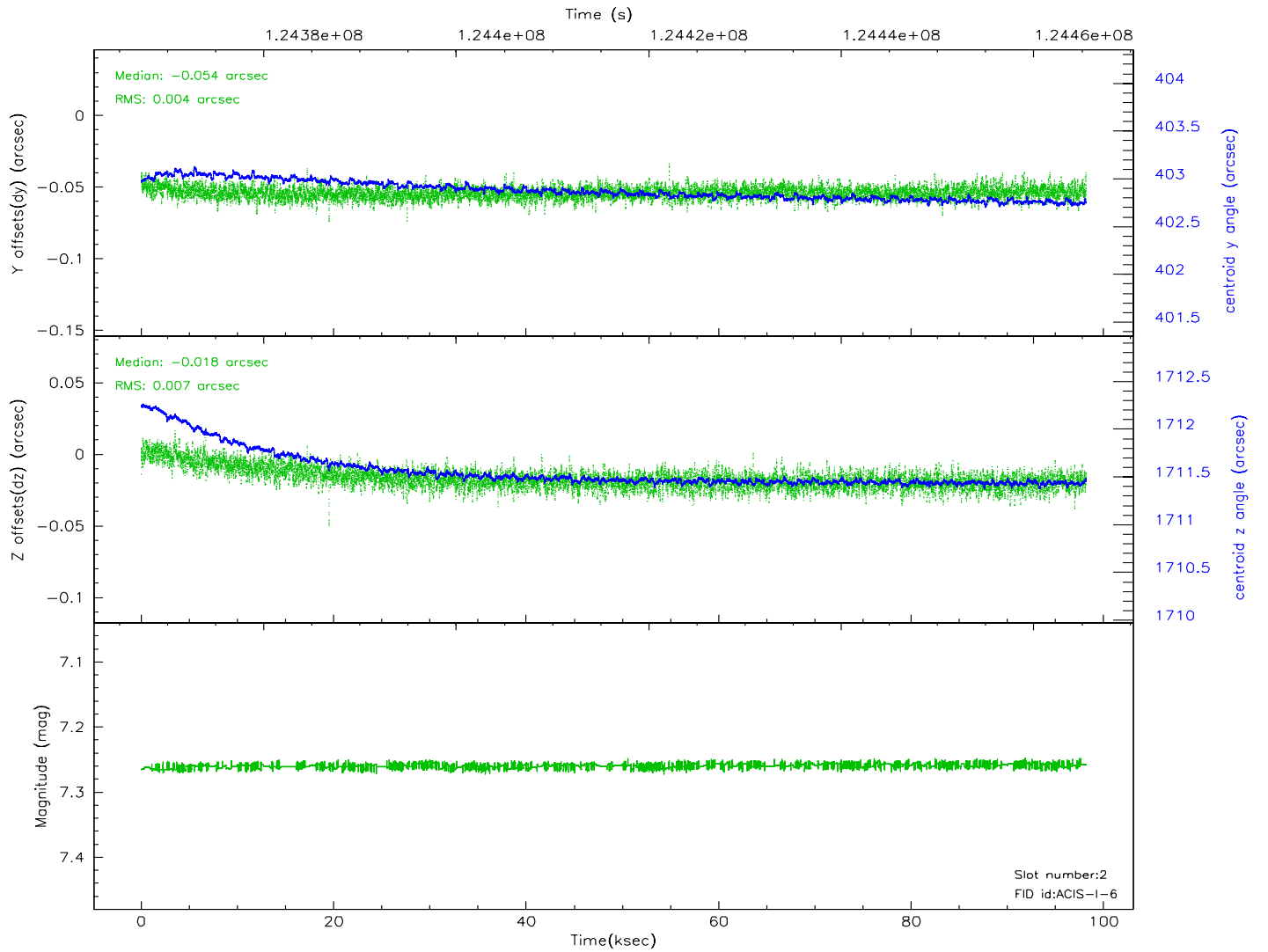
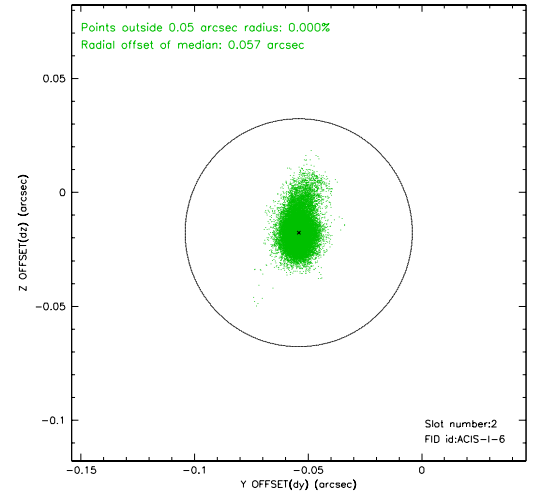
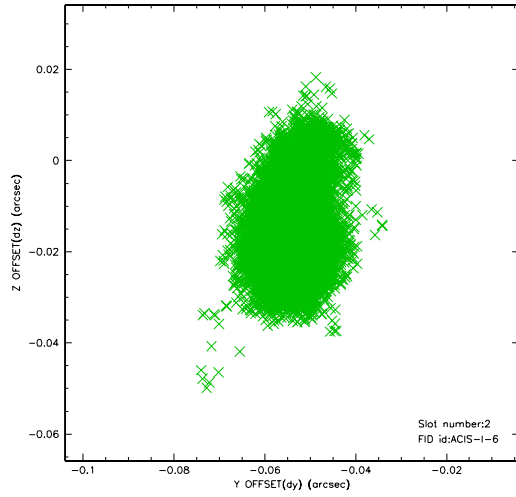
2.5.1 Slot 0



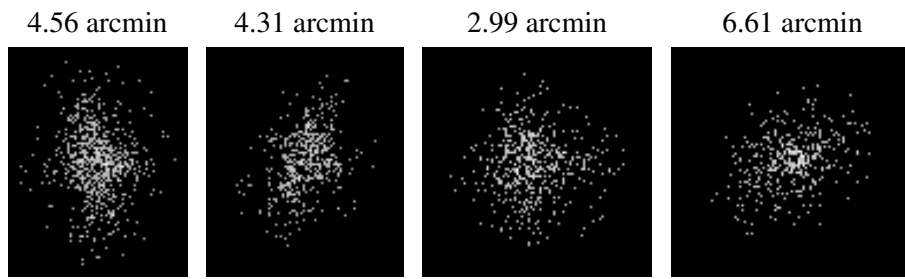
2.5.2 Slot 1



2.5.3 Slot 2



3 Point Sources



A Summary

A.1 Status

V&V Scientist	Beth Sundheim
V&V Date (YYYY-MM-DD)	2007.01.18
V&V Edition	1
V&V Disposition and Status	OK
V&V Charge Time	97.938

A.2 Comments