

V&V Reference Report

L2 ASCDS Version : 7.6.9

Observation 2506 - L2 Version 001
Chandra X-Ray Center

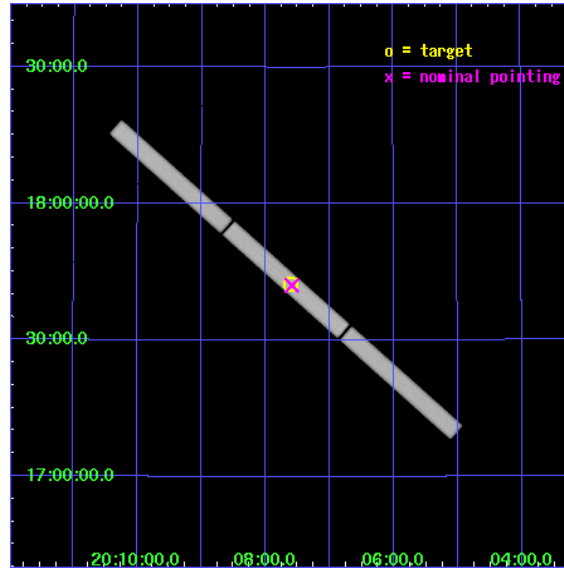
L2 Processing Date : Dec 19 2006

Contents

1	Front	2
2	OBI	3
2.1	OBI	3
2.1.1	Images	3
2.1.2	Parameters	4
2.1.3	Events	4
2.2	Compared Parameters	5
2.3	Aspect	6
2.4	Star Slots	9
2.4.1	Slot 3	9
2.4.2	Slot 4	10
2.4.3	Slot 5	11
2.4.4	Slot 6	12
2.4.5	Slot 7	13
2.5	FID Slots	14
2.5.1	Slot 0	14
2.5.2	Slot 1	15
2.5.3	Slot 2	16
3	Gratings	17
3.1	LETG Arm	17
A	Summary	19
A.1	Status	19
A.2	Comments	19

1 Front

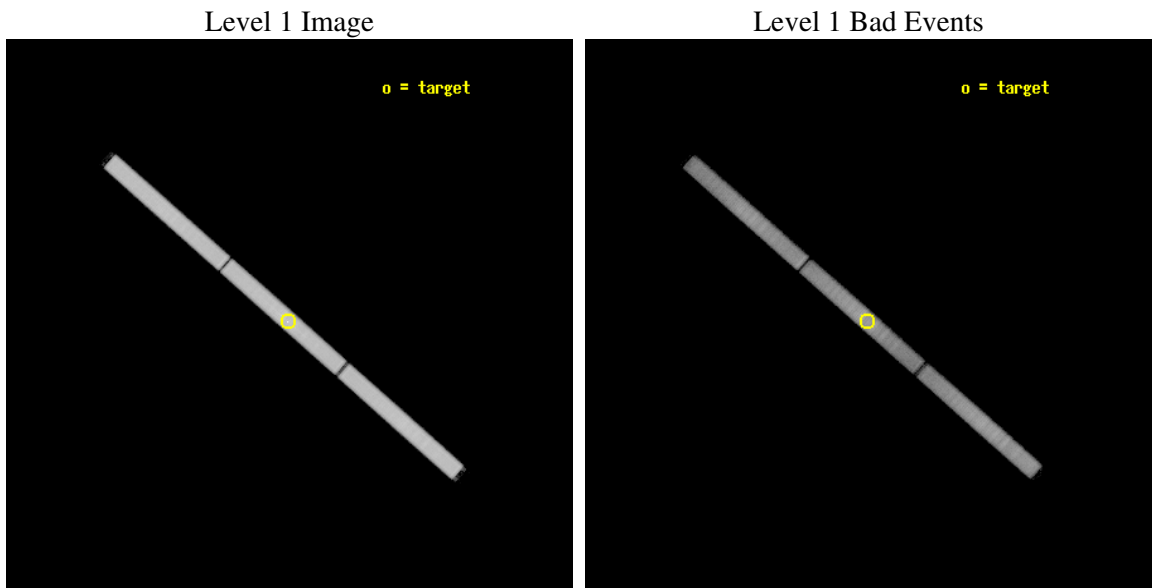
seq_num	300059
obs_id	2506
title	WZ SGE IN OUTBURST TEN YEARS EARLY: I THE EUV EMISSION
observer	Dr Peter Wheatley
object	WZ SGE
ra_targ	301.900833
dec_targ	17.704167
ra_nom	301.89701125763
dec_nom	17.701122768542
roll_nom	221.36274384997
revision	2
ontime	19983.657037616
livetime	19841.782996773
l2events	1042763



2 OBI

2.1 OBI

2.1.1 Images



2.1.2 Parameters

obi_num	1
ascdsver	7.6.9
caldbver	3.2.4
date	2006-12-19T16:59:05
revision	2

sched_exp_time	20000.000000
ontime	20063.350790754
l1events	1637823

2.1.3 Events

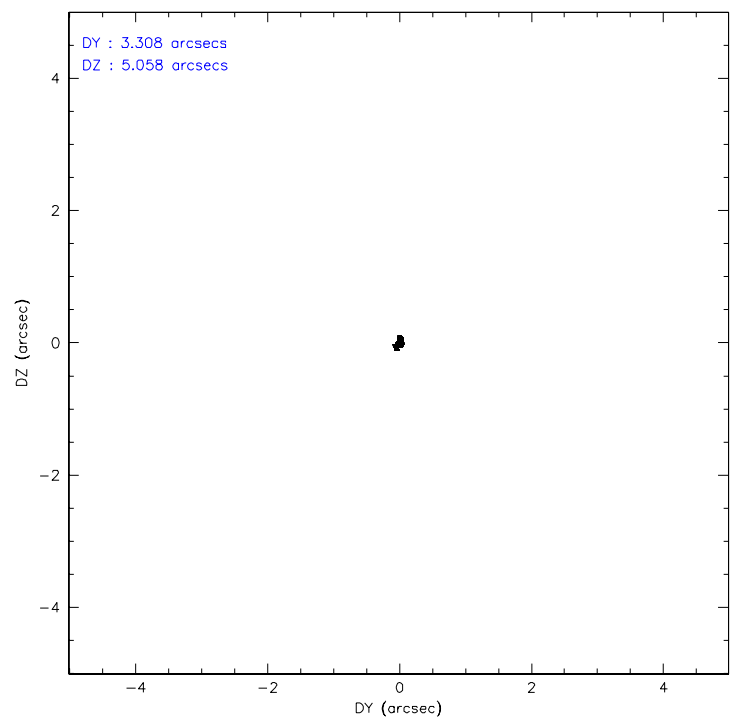
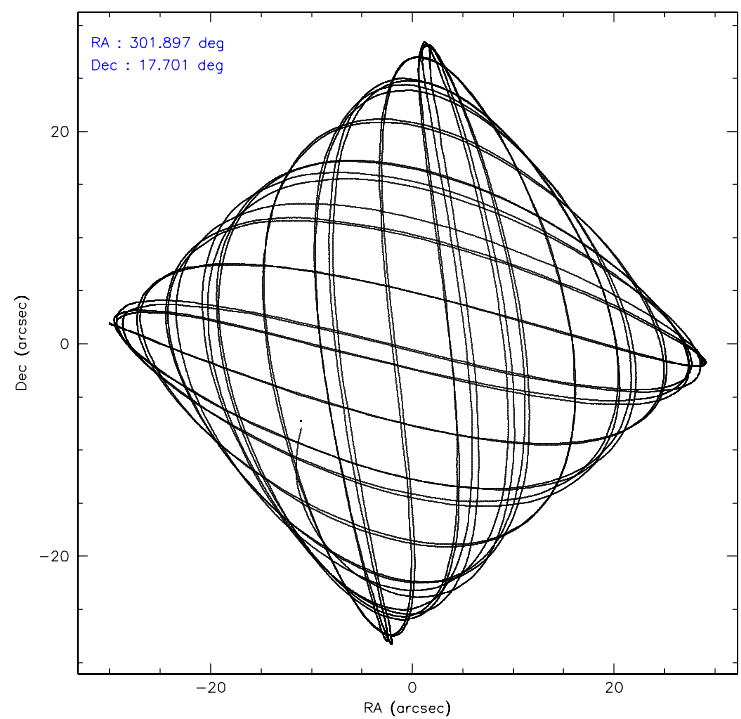
Level 1 Events

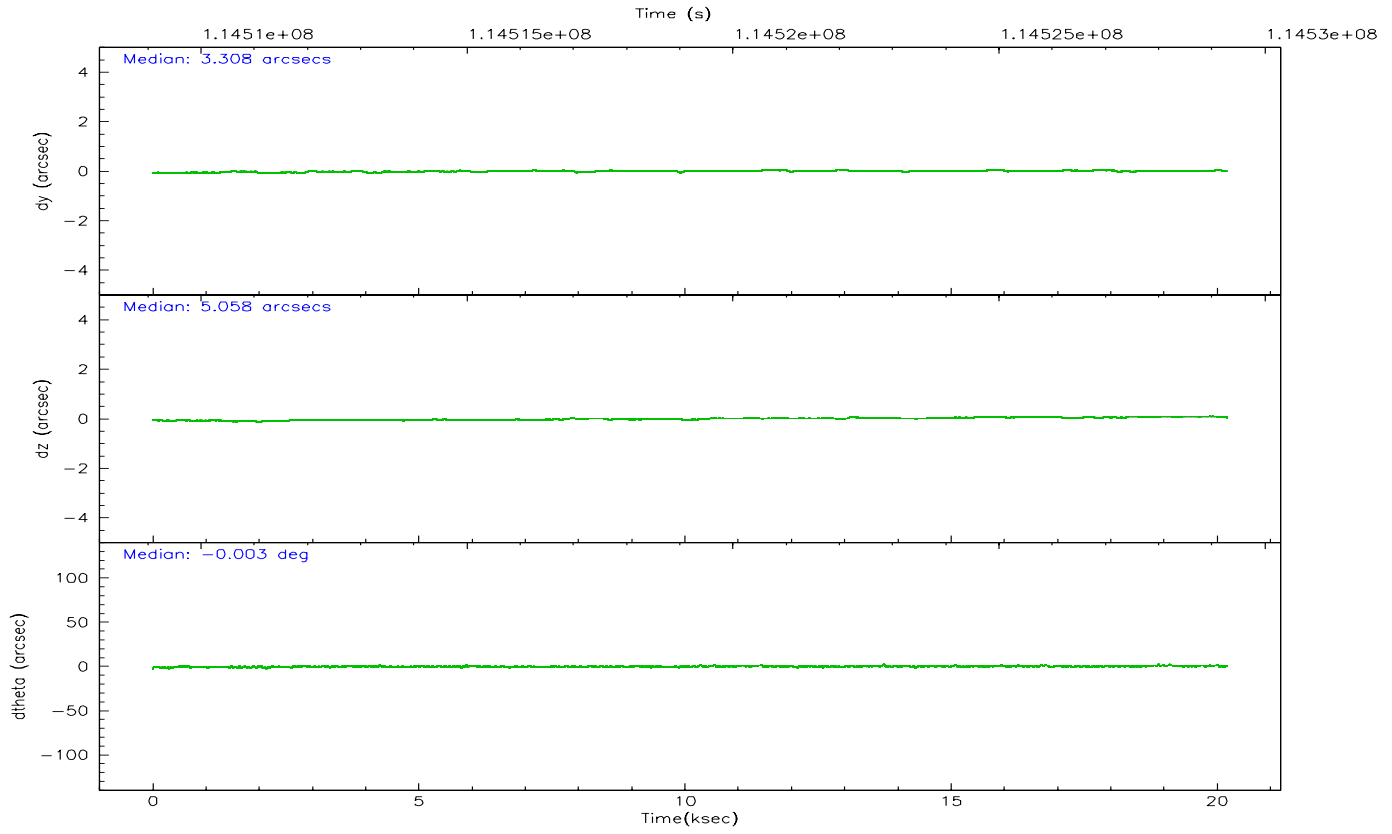
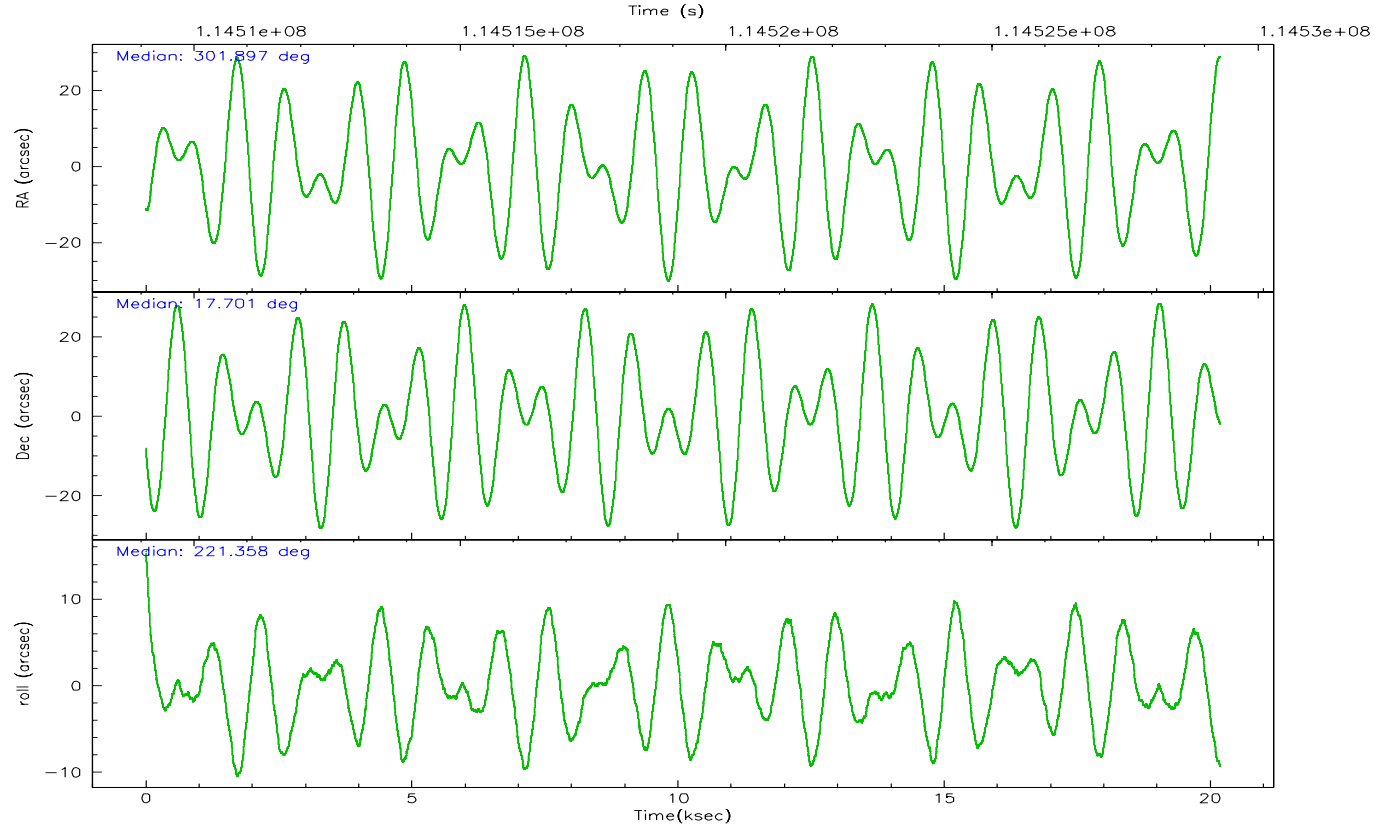
	segment 1	segment 2	segment 3
level 1 events	547739	541753	548331
rejected events	134921	141846	162095
rejected %	24%	26%	29%

2.2 Compared Parameters

Parameter	Planned	Actual	Parameter	Planned	Actual
Instrument	HRC	HRC	Obspar format version number	6	6
Detector	HRC-S	HRC-S	Obspar file type	PREDICTED	ACTUAL
Grating	LETG	LETG	Obspar update status	NONE	UPDATED
Data mode	OBSERVING	OBSERVING			
Observation mode	POINTING	POINTING			
Pointing RA	301.905222	301.8970112576321			
Pointing Dec	17.728694	17.70112276854181			
Pointing Roll	221.292907	221.3627438499707			
SIM focus pos (mm)	-1.429586	-1.428180813131781			
SIM defocus (mm)	0.1037507710433287	0.1051558262725154			
SIM translation stage pos (mm)	251.455976	251.4516446784125			
SIM translation stage offset (mm)	-1	-0.9956662848578048			
Observation start time	114509285.184000	114508047.14551			
Observation start date	2001-08-18T08:07:01	2001-08-18T07:47:27			
Observation end time	114529285.184000	114530243.52138			
Observation end date	2001-08-18T13:40:21	2001-08-18T13:57:23			

2.3 Aspect



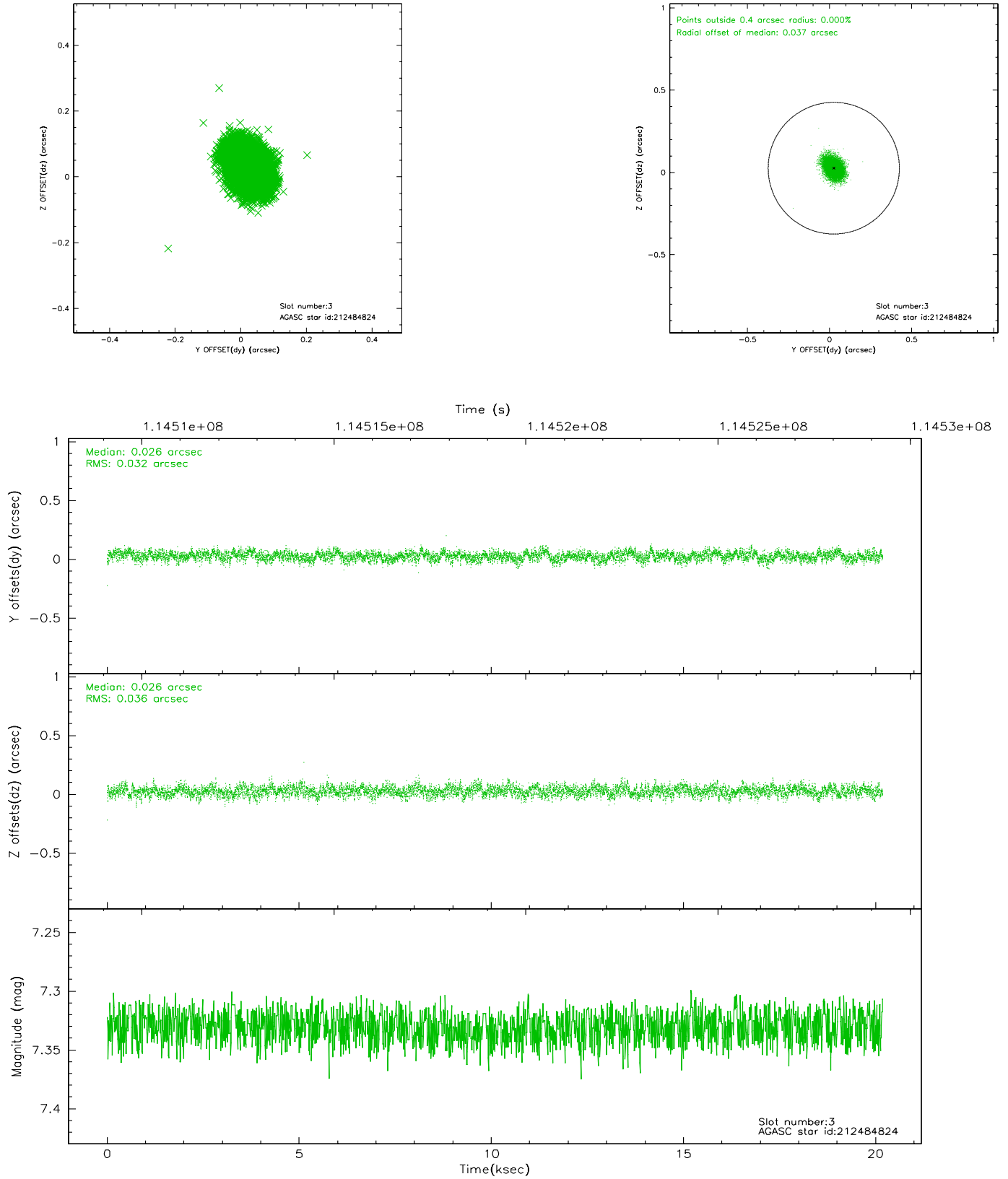


Slot Statistics

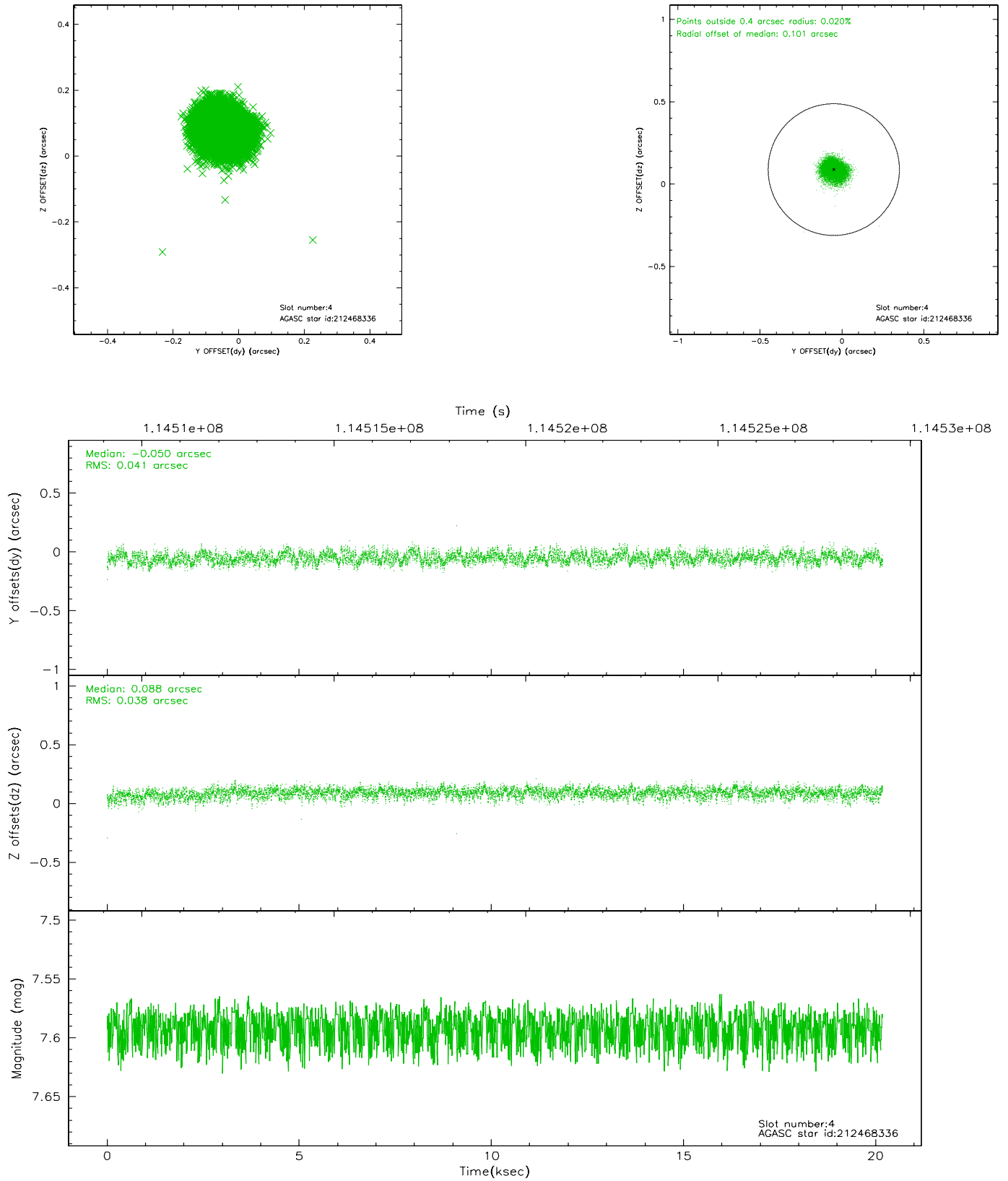
slot	status	id	mag	n_pts	med_dy	med_dz	dr1	dr2	ra	dec	mean_y	mean_z
0	FID	HRC-S-1	6.95	4924	0.141	-0.142	0.008	0.014	0.000000	0.000000	-1157.28	-473.83
1	FID	HRC-S-2	6.94	4924	0.102	-0.094	0.007	0.022	0.000000	0.000000	1242.13	-466.54
2	FID	HRC-S-3	6.97	4924	0.146	-0.067	0.008	0.013	0.000000	0.000000	-1159.74	555.68
3	GUIDE	212484824	7.33	9849	0.026	0.026	0.051	0.084	301.436883	17.597881	1517.63	-708.53
4	GUIDE	212468336	7.59	9849	-0.050	0.088	0.060	0.092	301.479163	18.244435	-130.91	-2358.00
5	GUIDE	212599608	7.83	9847	-0.066	-0.106	0.069	0.108	302.041368	17.043012	1277.06	2163.11
6	GUIDE	212477672	7.63	9849	-0.006	-0.019	0.055	0.089	301.870505	17.020545	1772.66	1836.49
7	GUIDE	212603624	8.92	9843	0.098	0.012	0.069	0.113	302.163000	18.336944	-2106.37	-1064.87

2.4 Star Slots

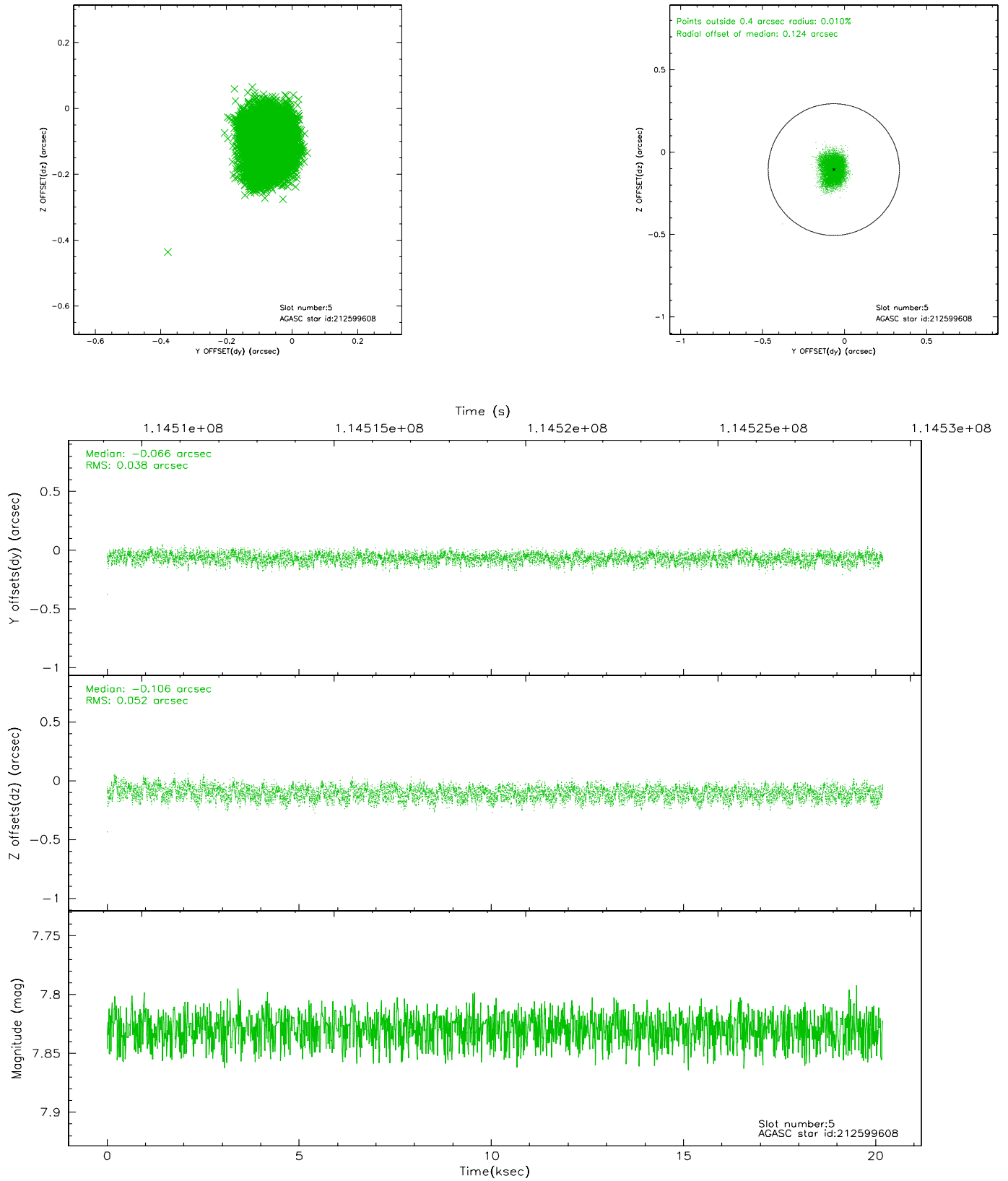
2.4.1 Slot 3



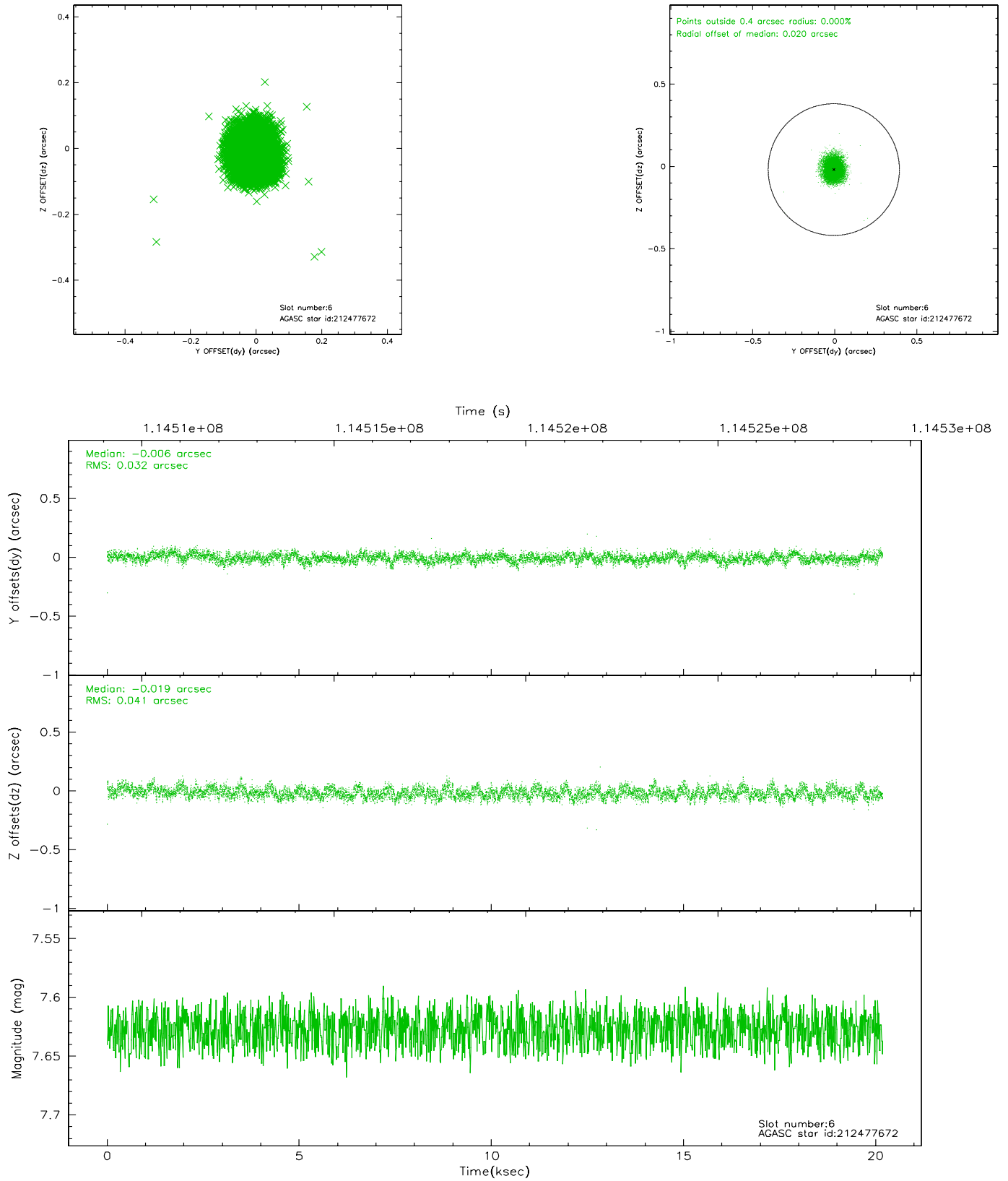
2.4.2 Slot 4



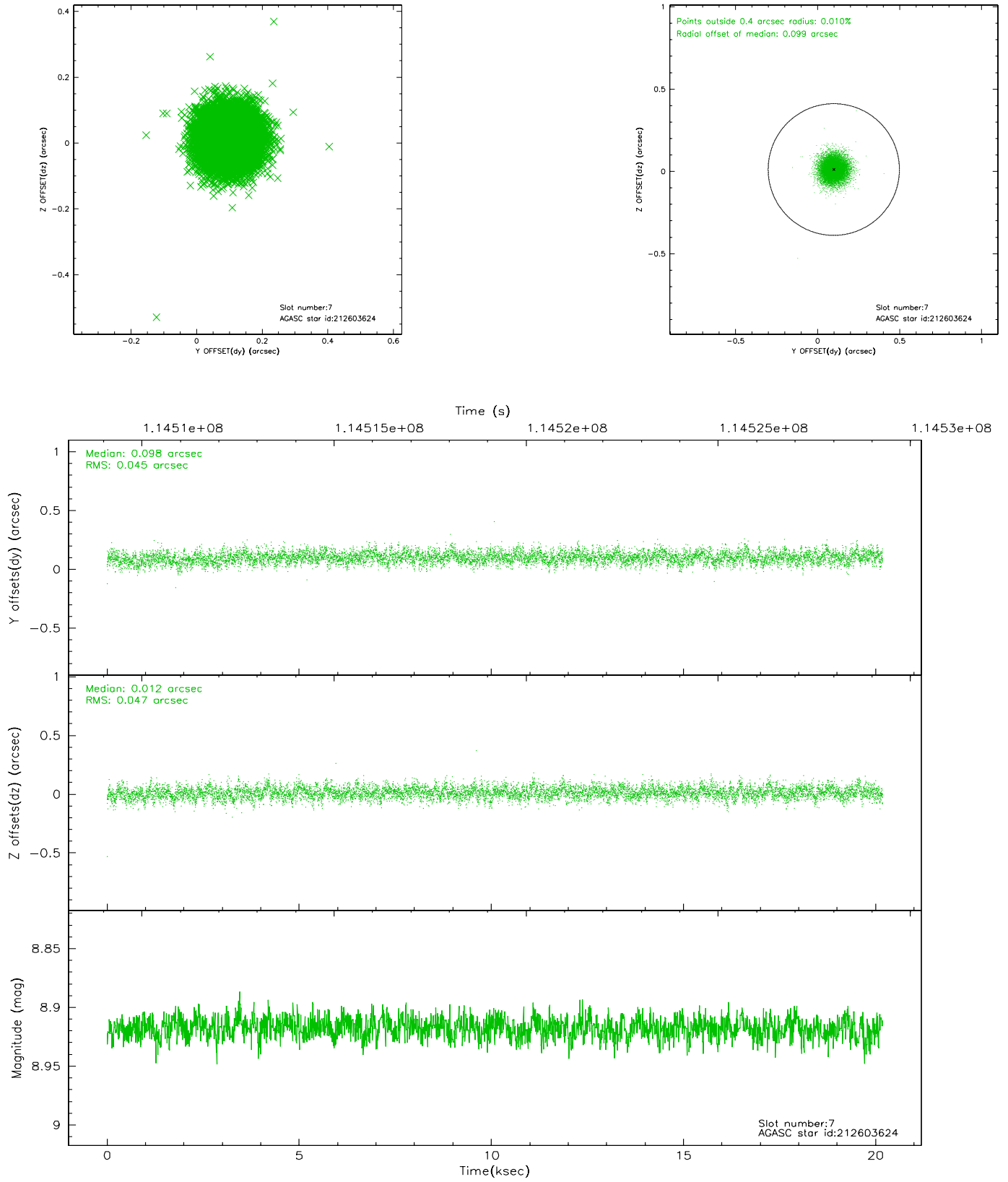
2.4.3 Slot 5



2.4.4 Slot 6

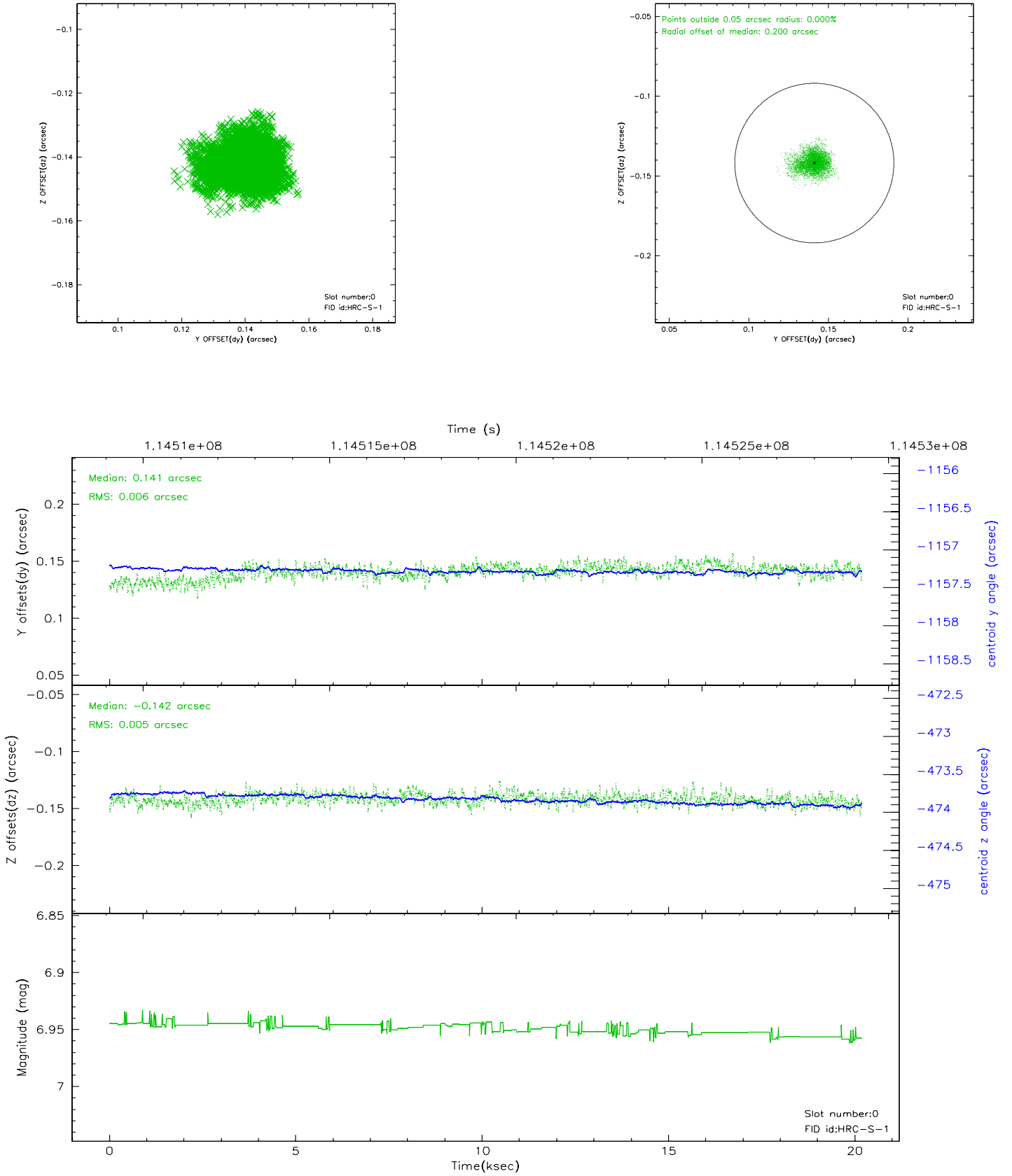


2.4.5 Slot 7

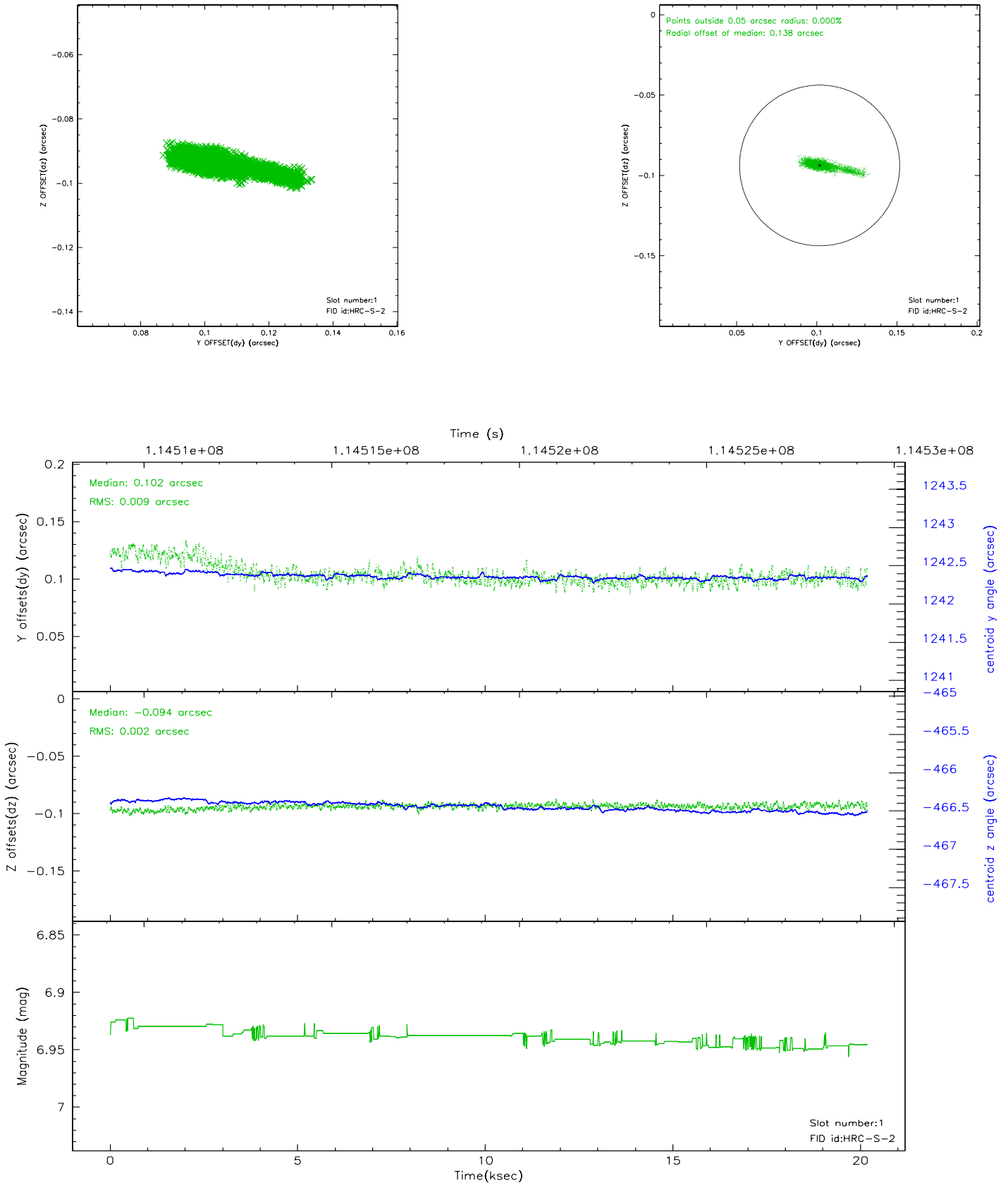


2.5 FID Slots

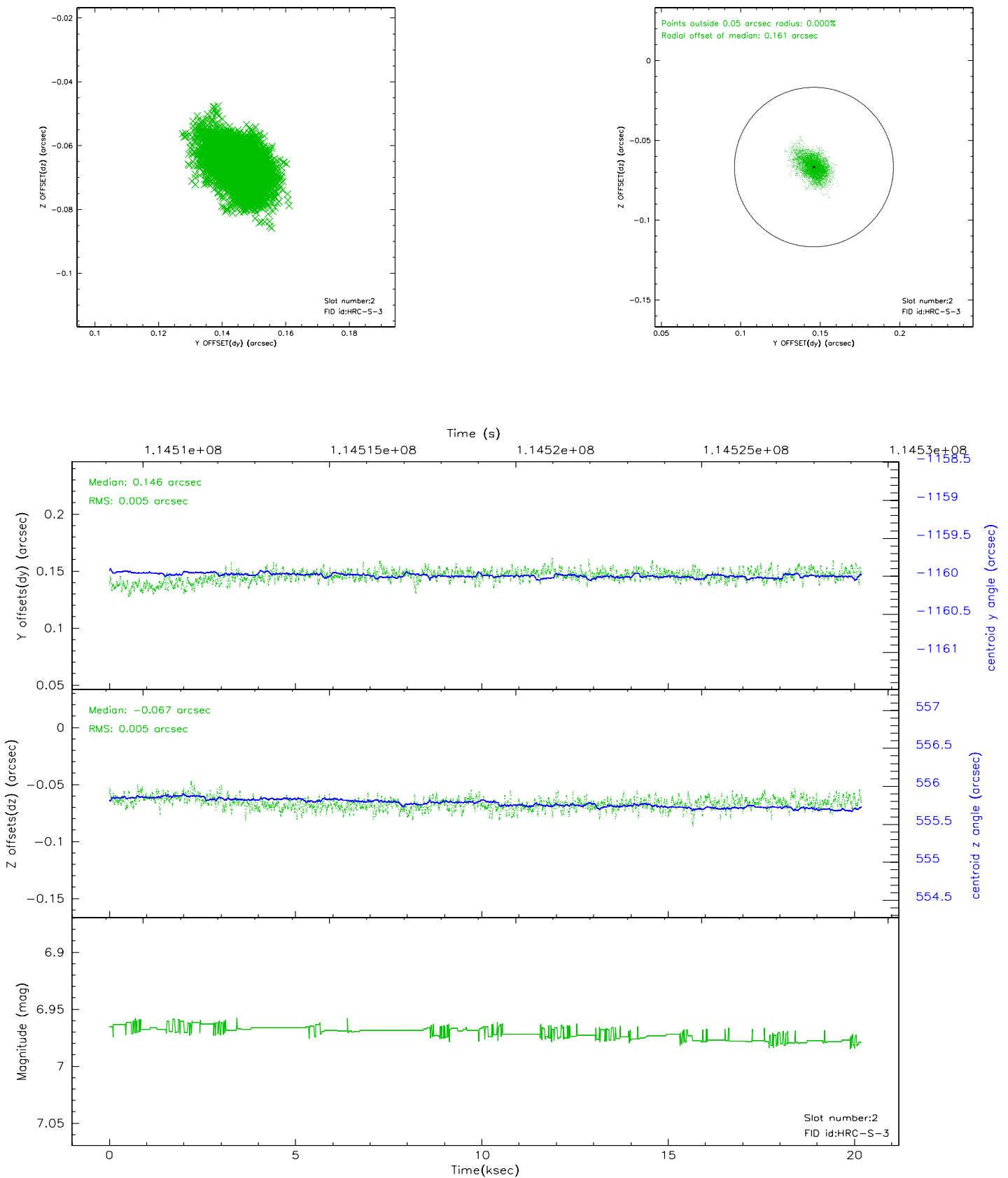
2.5.1 Slot 0



2.5.2 Slot 1

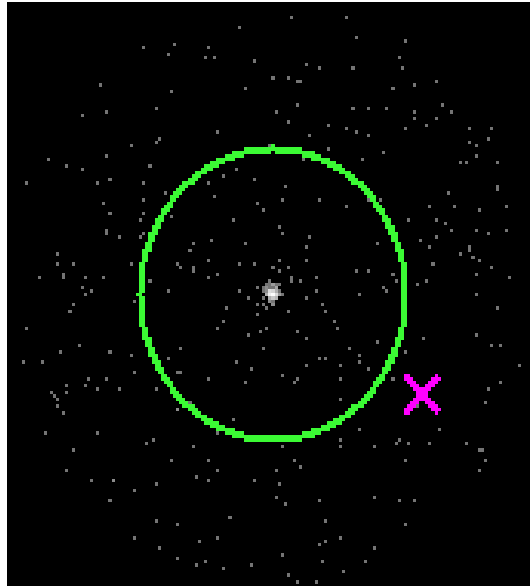


2.5.3 Slot 2



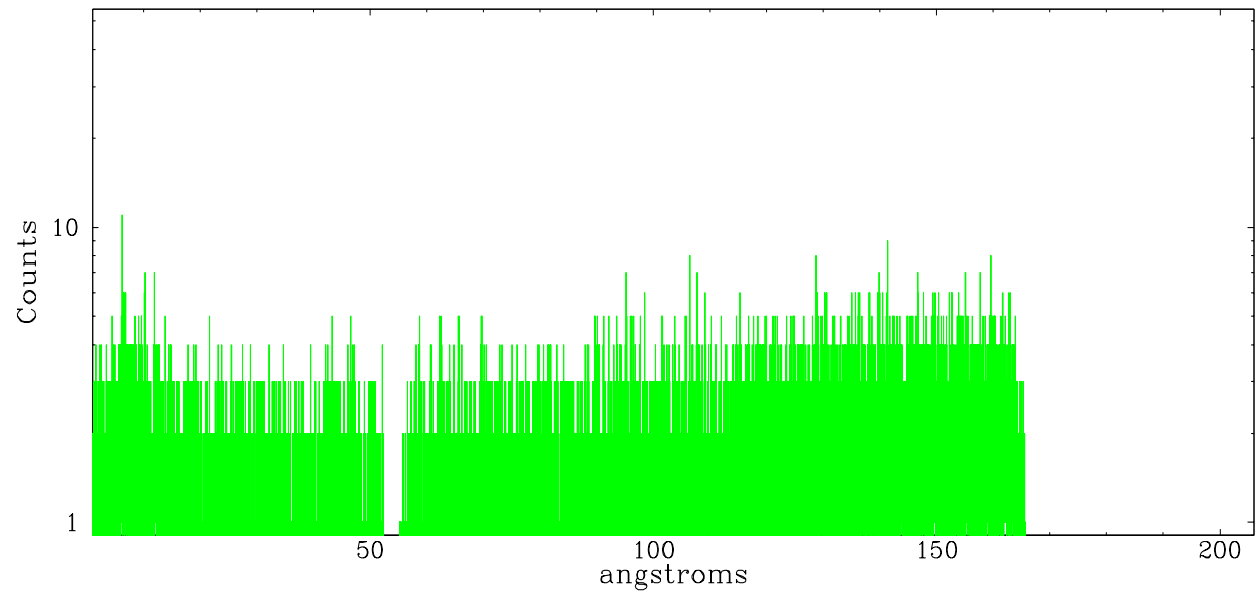
3 Gratings

3.1 LETG Arm

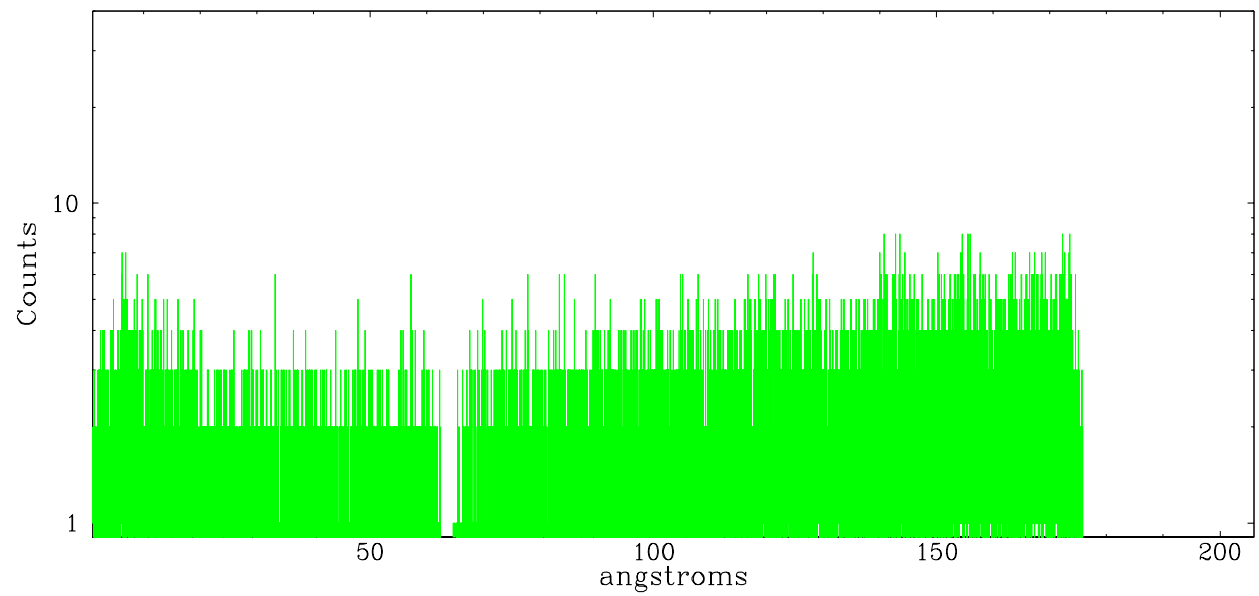


LETG Zero Order

leg order -1



leg order +1



A Summary

A.1 Status

V&V Scientist	Jen Lauer
V&V Date (YYYY-MM-DD)	2006.12.20
V&V Edition	1
V&V Disposition and Status	OK
V&V Charge Time	19.984

A.2 Comments

Monitor constraint not met. From CDO:

Although the monitoring constraints were technically violated, the proposer is happy with the data. The source has also faded so no repeat observation is possible.