

V&V Reference Report

L2 ASCDS Version : 7.6.9

Observation 2456 - L2 Version 001
Chandra X-Ray Center

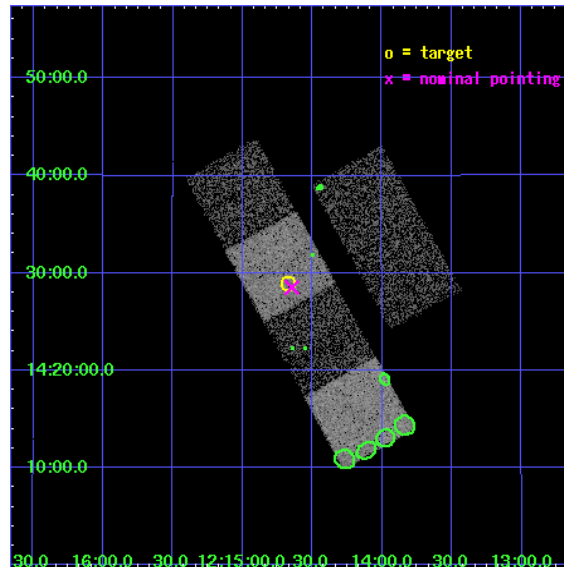
L2 Processing Date : Nov 23 2006

Contents

1	Front	2
2	OBI	3
2.1	OBI	3
2.1.1	Images	3
2.1.2	Bias	3
2.1.3	Parameters	4
2.1.4	Events	4
2.2	Compared Parameters	5
2.3	Aspect	6
2.4	Star Slots	9
2.4.1	Slot 3	9
2.4.2	Slot 4	10
2.4.3	Slot 5	11
2.4.4	Slot 6	12
2.4.5	Slot 7	13
2.5	FID Slots	14
2.5.1	Slot 0	14
2.5.2	Slot 1	15
2.5.3	Slot 2	16
3	Point Sources	17
A	Summary	18
A.1	Status	18
A.2	Comments	18

1 Front

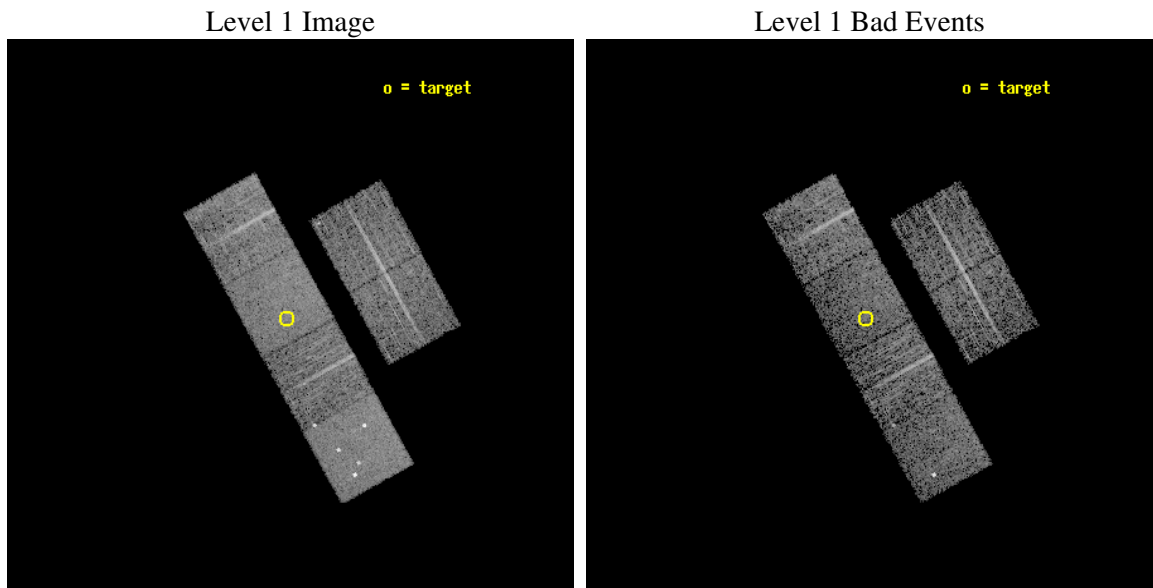
seq_num	700394
obs_id	2456
title	PUBLIC OBSERVATIONS OF A WELL-DEFINED SAMPLE OF BAL QSOS FROM THE LARGE BRIGHT QUASAR SURVEY: REMOVING THE BARRIERS
observer	Prof. William Brandt
object	LBQS 1212+1445
dtcycle	0
cycle	P
ra_targ	183.667917
dec_targ	14.483056
ra_nom	183.66152815129
dec_nom	14.475485819425
roll_nom	241.02524289033
revision	2
ontime	4556.8000042439
livetime	4499.0990588146
ontime2	4556.8000042439
ontime3	4556.8000042439
ontime5	4556.8000042439
ontime6	4556.8000042439
ontime7	4556.8000042439
ontime8	4553.5590339899
l2events	42019



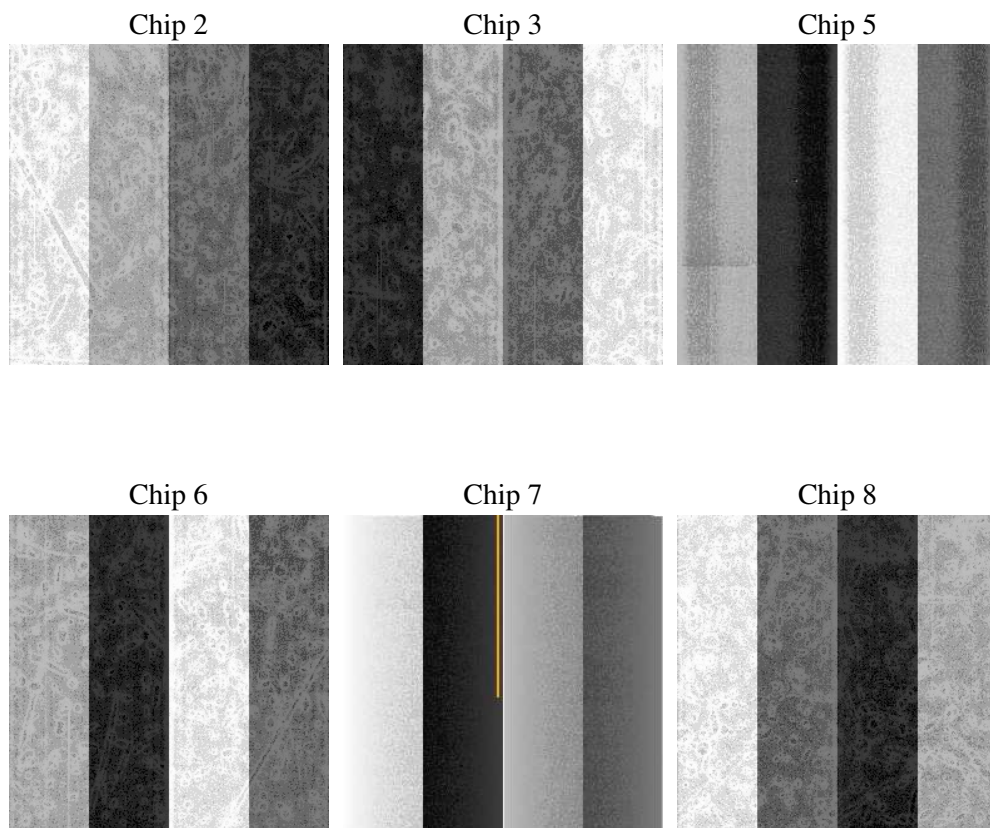
2 OBI

2.1 OBI

2.1.1 Images



2.1.2 Bias



2.1.3 Parameters

obi_num	0
ascdsver	7.6.9
caldsver	3.2.4
date	2006-11-23T05:10:50
revision	2

sched_exp_time	4800.000000
ontime	4563.3265974671
ontime2	4563.3265476376
ontime3	4563.3265974671
ontime5	4563.3265974671
ontime6	4563.3265974671
ontime7	4563.3265974671
ontime8	4560.0855076164
l1events	202069

2.1.4 Events

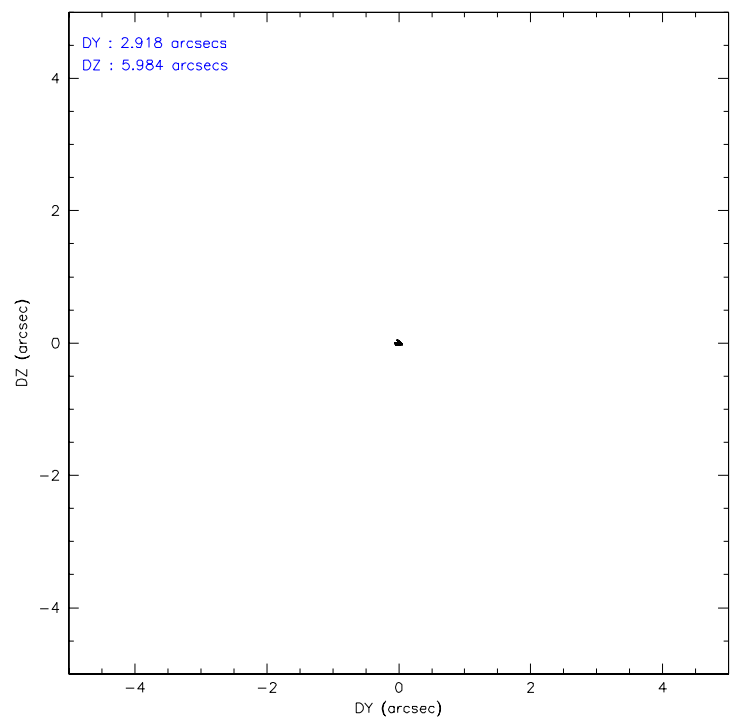
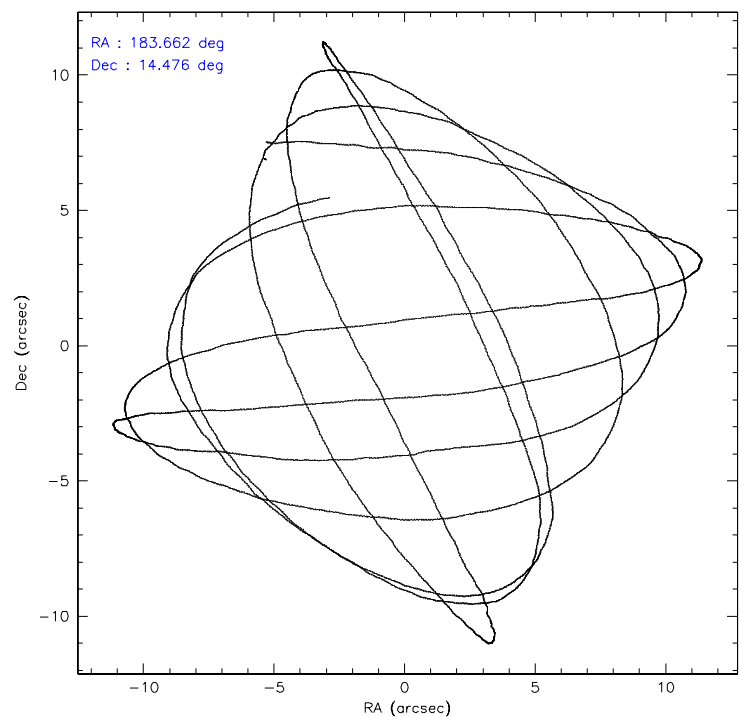
	ccd 2	ccd 3	ccd 5	ccd 6	ccd 7	ccd 8
level 1 events	27565	28700	42877	28899	36544	37484
rejected events	24356	25358	22772	25456	22235	30748
rejected %	88%	88%	53%	88%	60%	82%

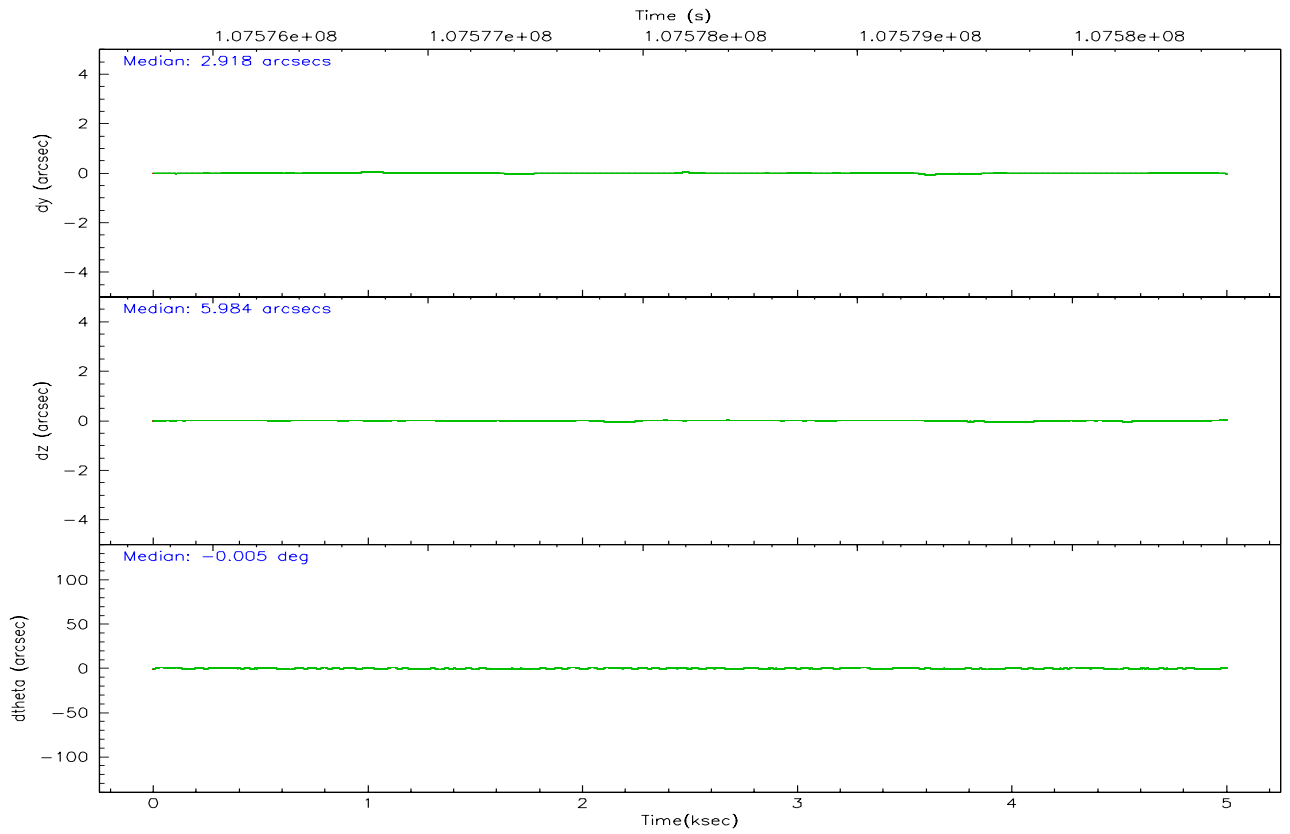
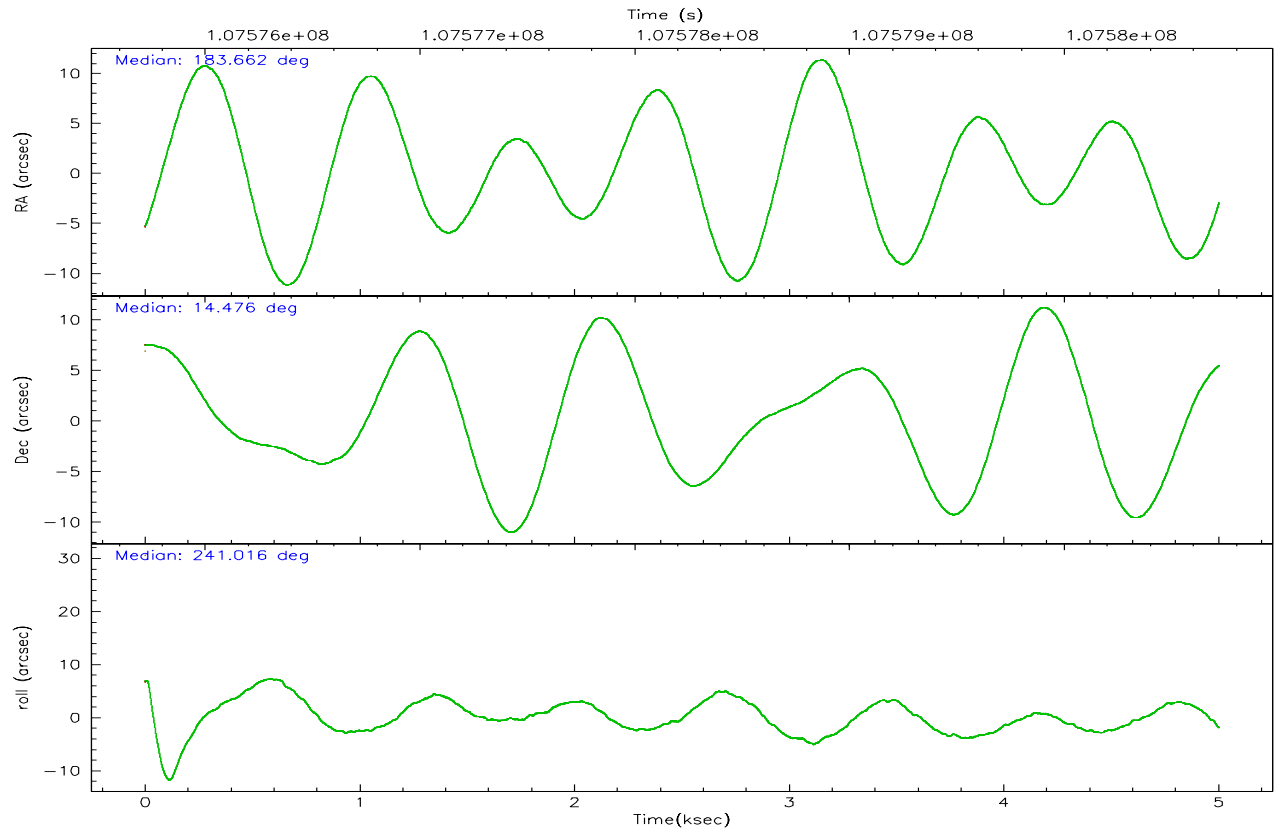
	ccd 2	ccd 3	ccd 5	ccd 6	ccd 7	ccd 8
grade 0 events	1427	1531	3529	1425	954	2176
	5%	5%	8%	4%	2%	5%
grade 1 events	12	15	120	11	30	31
	0%	0%	0%	0%	0%	0%
grade 2 events	651	639	5740	680	3453	1471
	2%	2%	13%	2%	9%	3%
grade 3 events	294	325	459	357	780	648
	1%	1%	1%	1%	2%	1%
grade 4 events	295	297	389	333	768	674
	1%	1%	0%	1%	2%	1%
grade 5 events	912	1072	2396	1097	2482	1472
	3%	3%	5%	3%	6%	3%
grade 6 events	545	555	10003	657	8376	1771
	1%	1%	23%	2%	22%	4%
grade 7 events	23429	24266	20241	24339	19701	29241
	84%	84%	47%	84%	53%	78%

2.2 Compared Parameters

Parameter	Planned	Actual	Parameter	Planned	Actual
Instrument	ACIS	ACIS	Obspar format version number	6	6
Detector	ACIS-235678	ACIS-235678	Obspar file type	PREDICTED	ACTUAL
Grating	NONE	NONE	Obspar update status	NONE	UPDATED
Data mode	FAINT	FAINT	Number of optional ACIS chips dropped	0	0
Observation mode	POINTING	POINTING	On-chip summing requested	N	N
Pointing RA	183.660735	183.6615281512916	Subarray requested	NONE	NONE
Pointing Dec	14.502764	14.47548581942538	Alternating exposures requested	N	N
Pointing Roll	240.868761	241.0252428903283	Primary exposure time	0.000000	3.2
SIM focus pos (mm)	-0.684267	-0.6828225247311905			
SIM defocus (mm)	0	0.001444936568705701			
SIM translation stage pos (mm)	-190.132523	-190.1400660498719			
SIM translation stage offset (mm)	0	0.00754346686406393			
Observation start time	107575922.184000	107575438.36167			
Observation start date	2001-05-30T02:10:58	2001-05-30T02:03:58			
Observation end time	107580722.184000	107581261.8994			
Observation end date	2001-05-30T03:30:58	2001-05-30T03:41:01			
Read mode	TIMED	TIMED			

2.3 Aspect



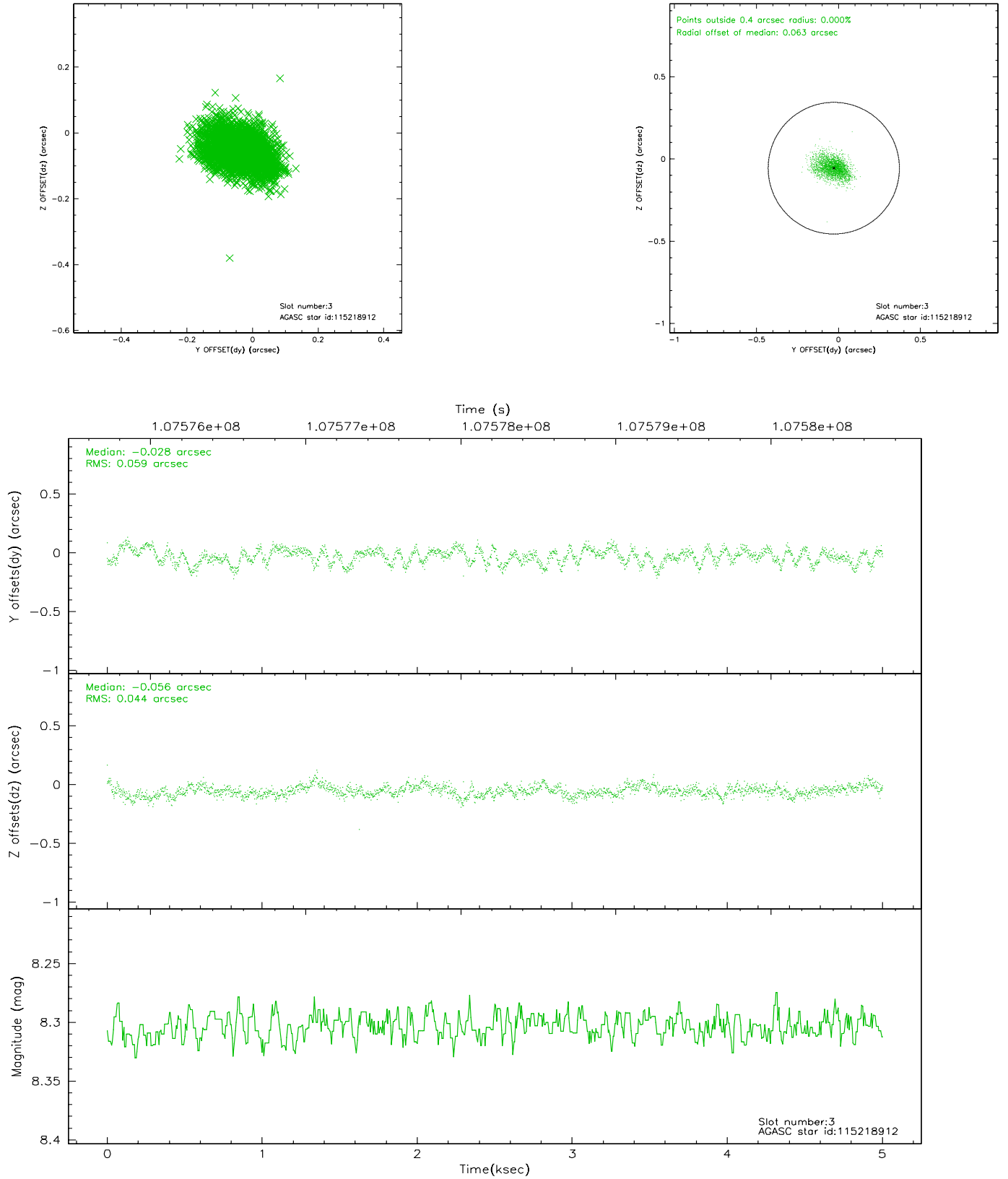


Slot Statistics

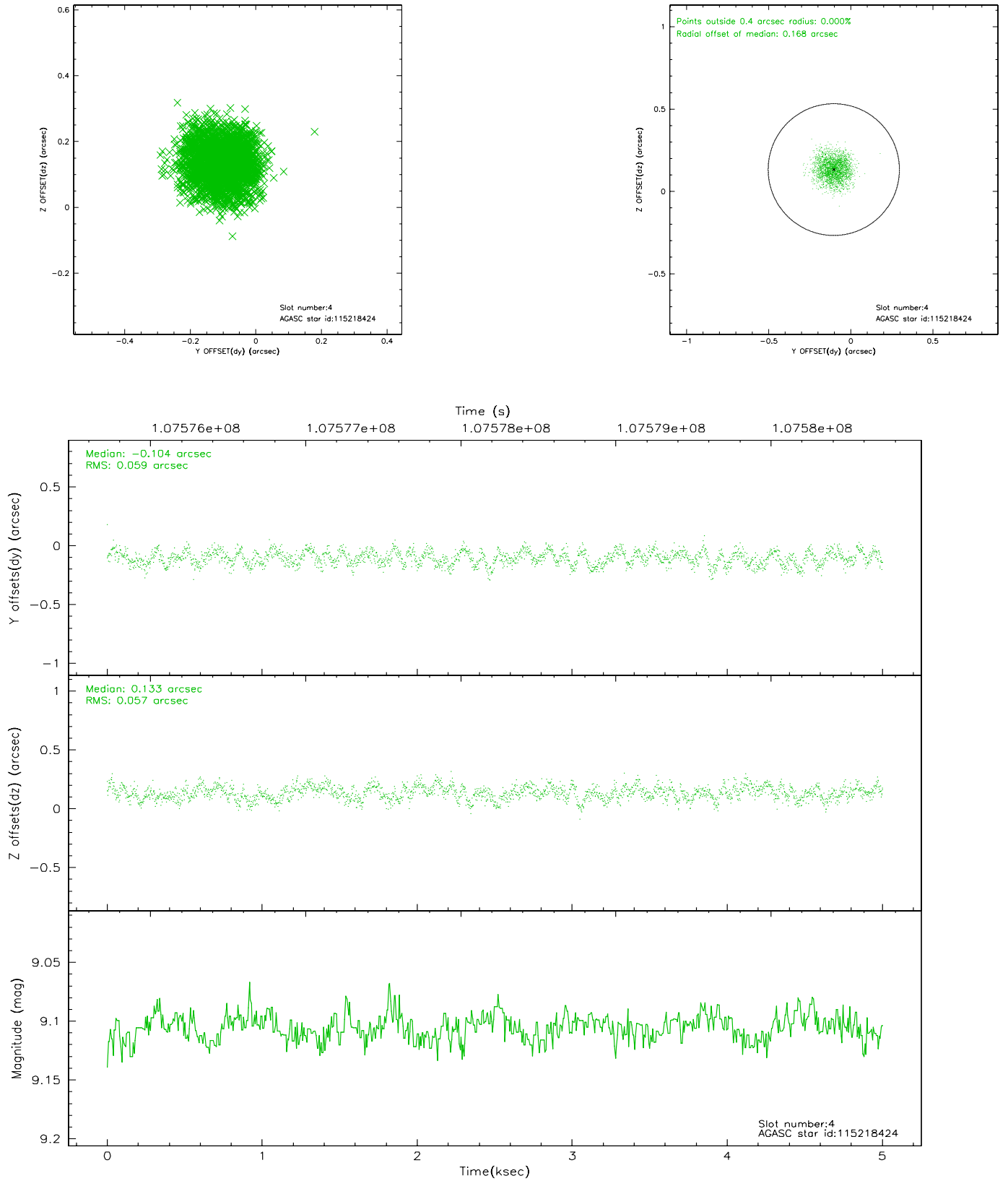
slot	status	id	mag	n_pts	med_dy	med_dz	dr1	dr2	ra	dec	mean_y	mean_z
0	FID	ACIS-S-2	7.11	1221	-0.008	0.037	0.006	0.010	0.000000	0.000000	-755.53	-1727.10
1	FID	ACIS-S-4	7.20	1221	-0.084	-0.006	0.005	0.008	0.000000	0.000000	2157.08	180.15
2	FID	ACIS-S-5	7.24	1221	0.061	-0.022	0.006	0.010	0.000000	0.000000	-1806.77	175.10
3	GUIDE	115218912	8.30	2441	-0.028	-0.056	0.077	0.128	184.400783	14.442830	-1070.40	2356.04
4	GUIDE	115218424	9.11	2440	-0.104	0.133	0.089	0.137	184.237137	14.820527	-1977.65	1194.68
5	GUIDE	114297536	9.25	2442	0.109	-0.071	0.081	0.127	183.757120	14.264956	584.30	710.69
6	GUIDE	114303096	9.30	2441	0.075	-0.152	0.079	0.127	183.214020	14.515722	717.42	-1383.47
7	GUIDE	115217168	9.63	2438	-0.046	0.154	0.154	0.228	184.139200	14.158763	268.20	2060.21

2.4 Star Slots

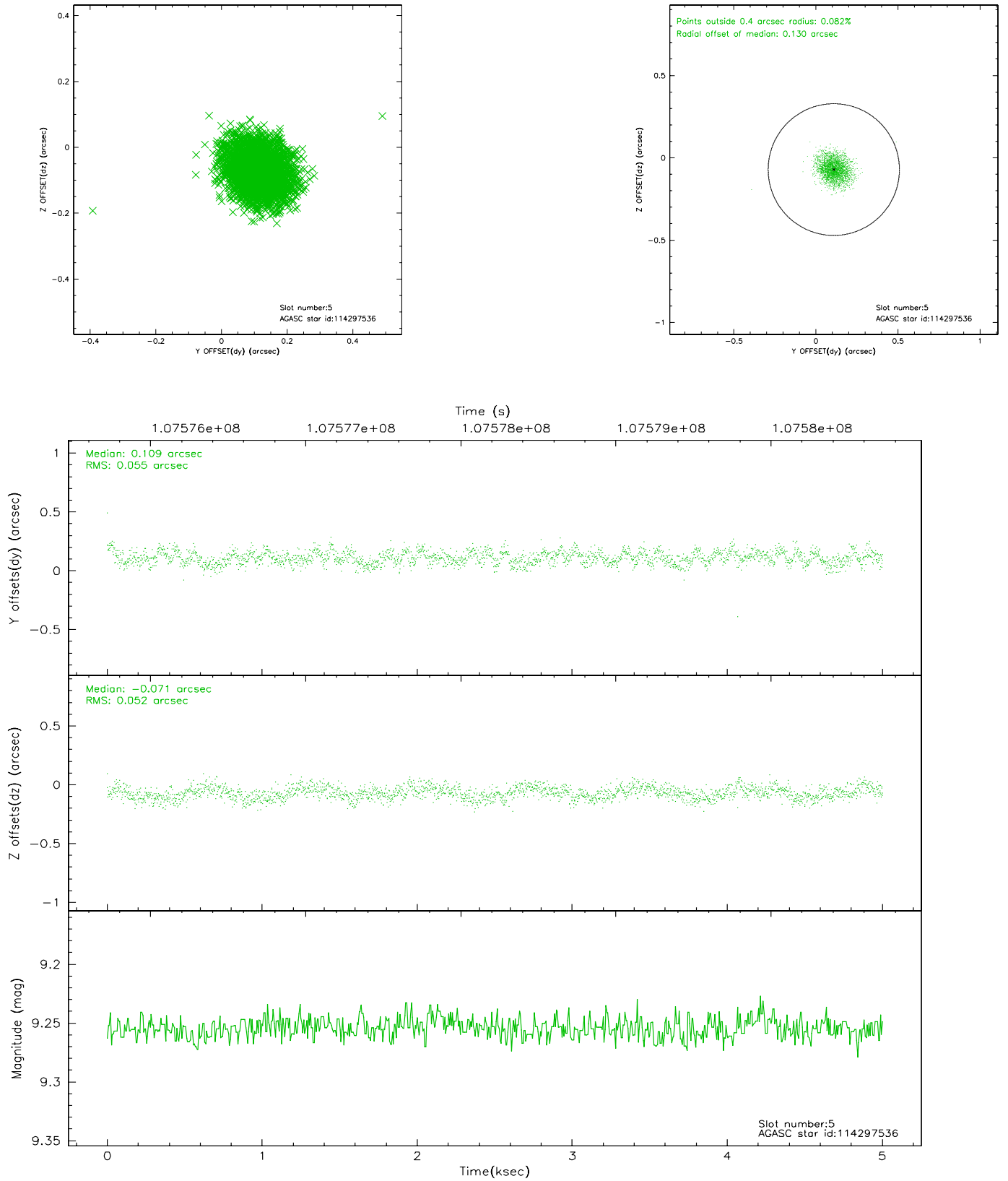
2.4.1 Slot 3



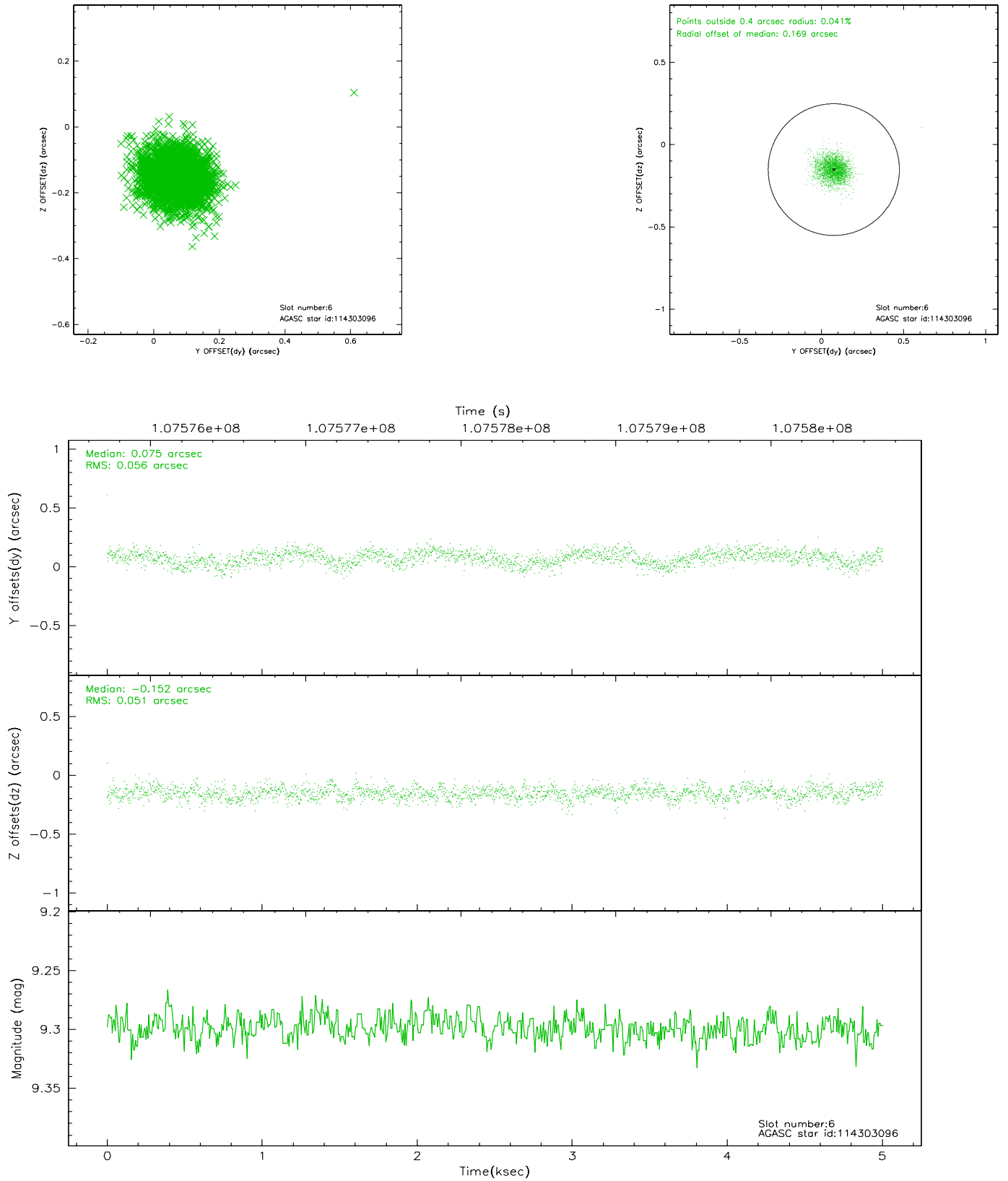
2.4.2 Slot 4



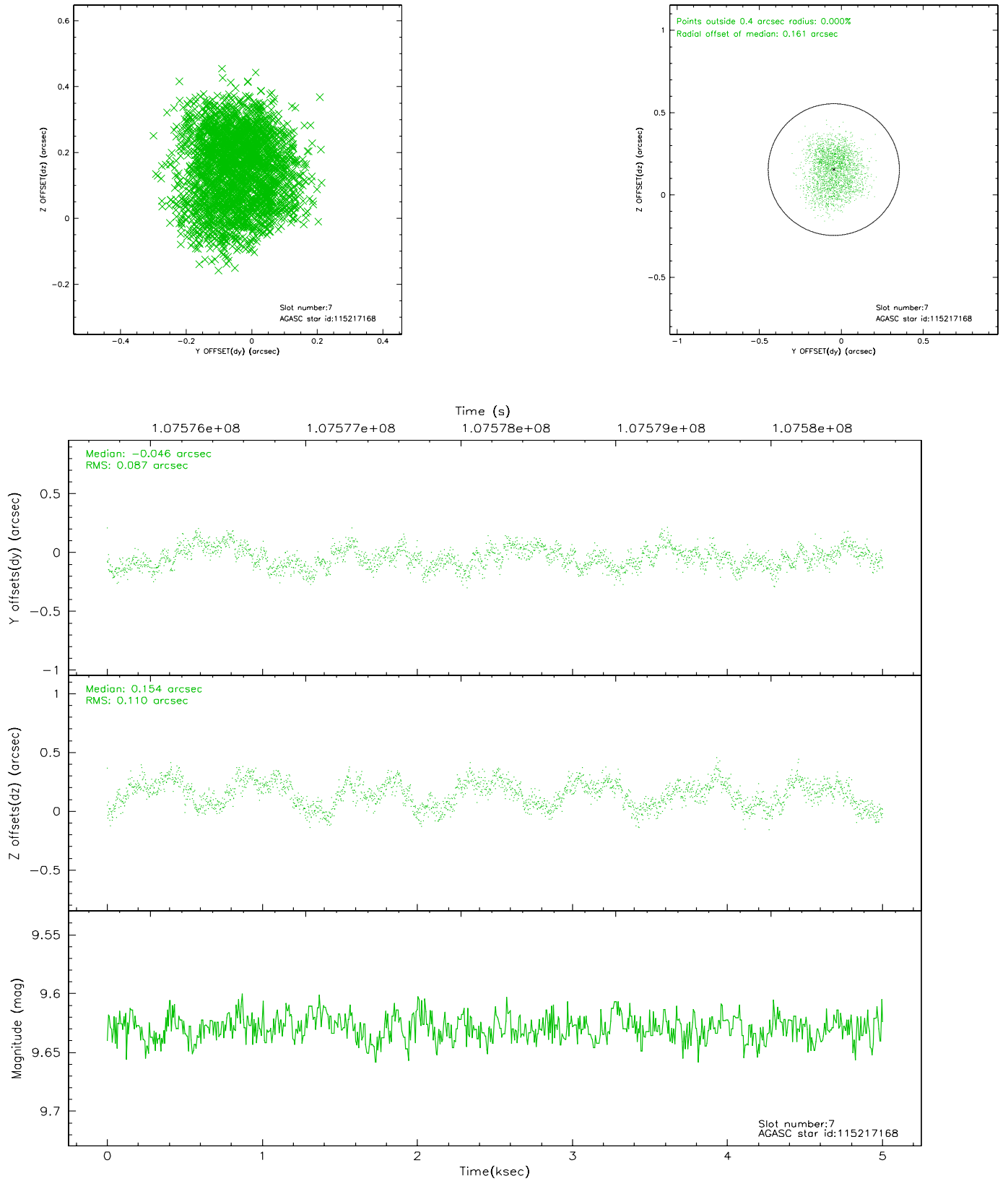
2.4.3 Slot 5



2.4.4 Slot 6

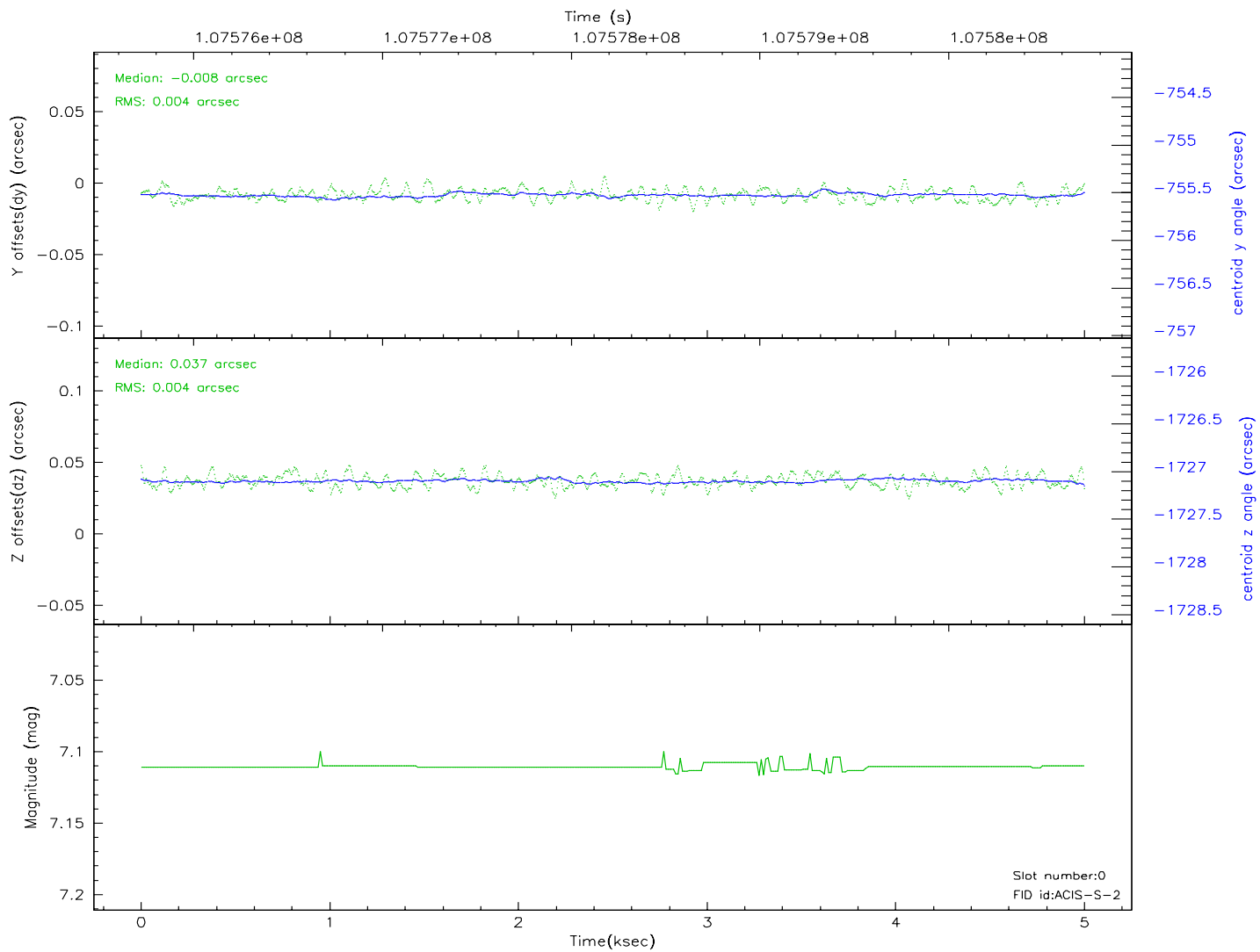
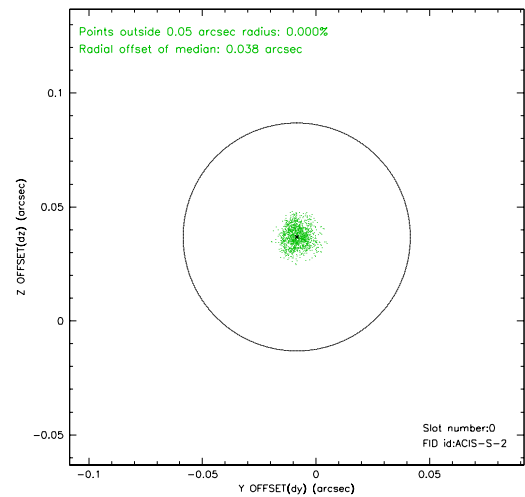
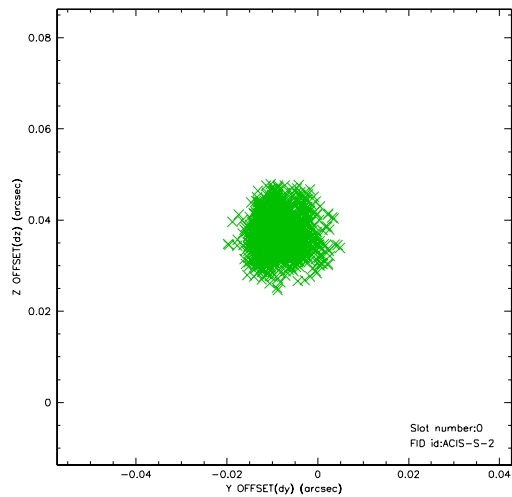


2.4.5 Slot 7

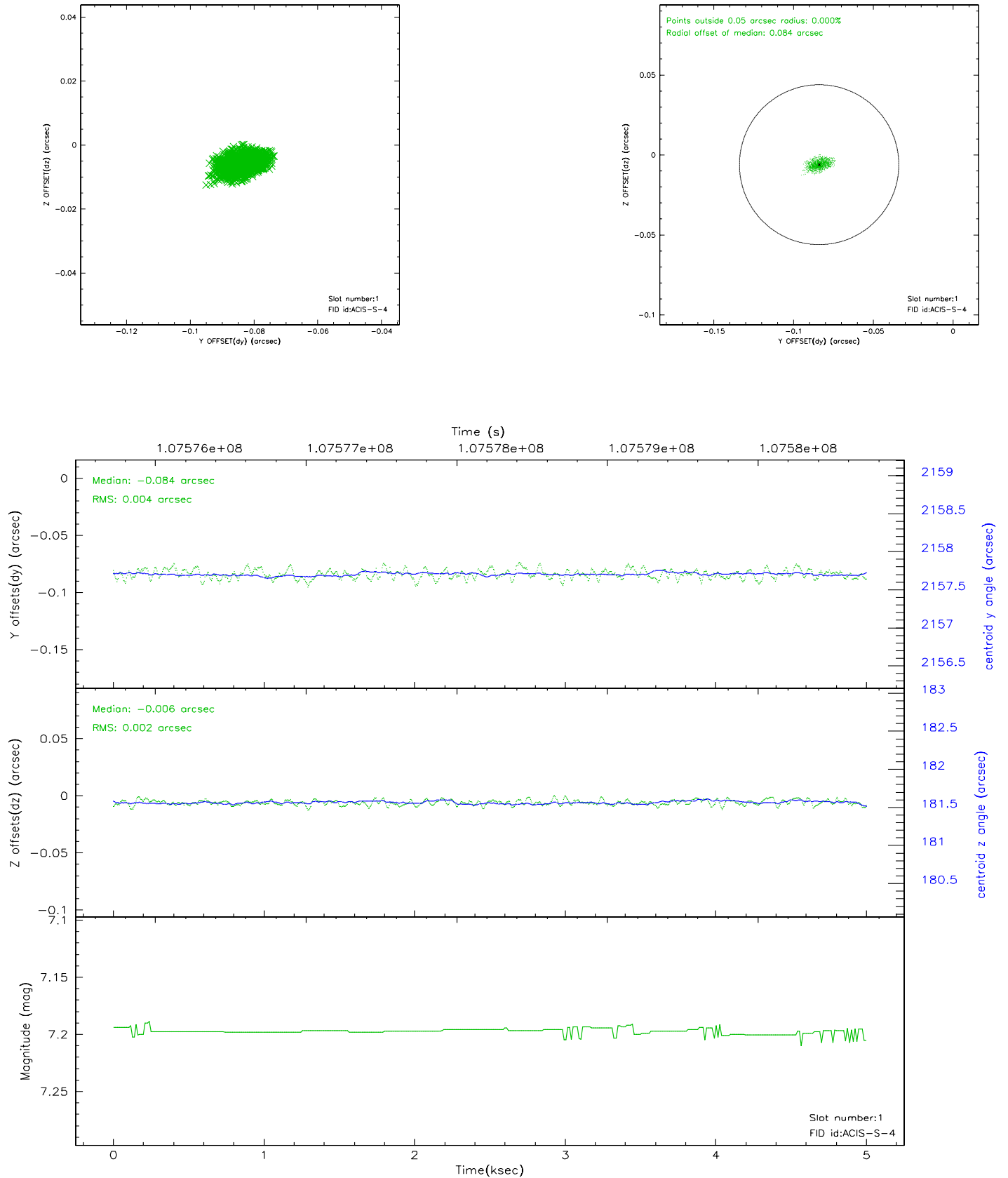


2.5 FID Slots

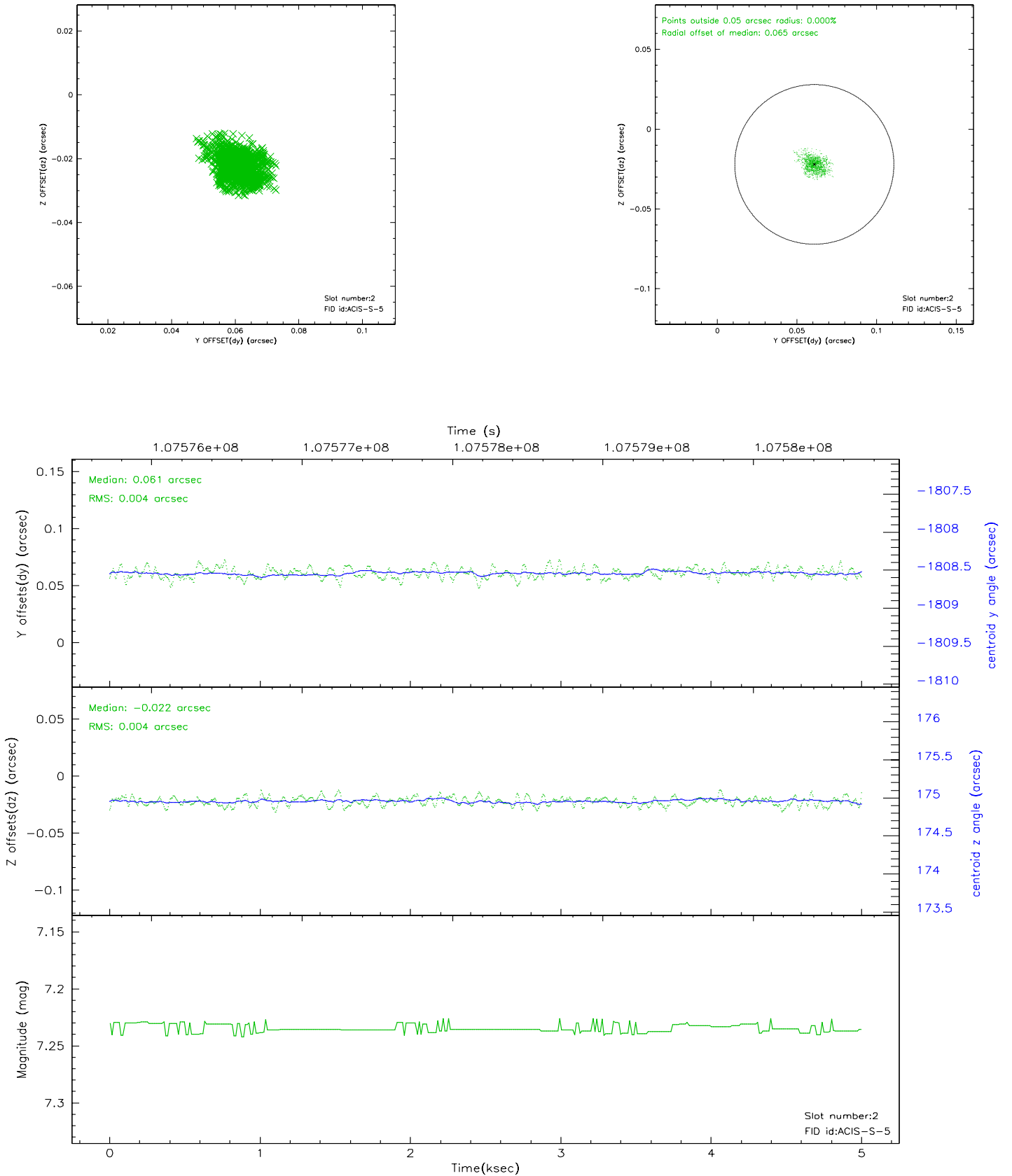
2.5.1 Slot 0



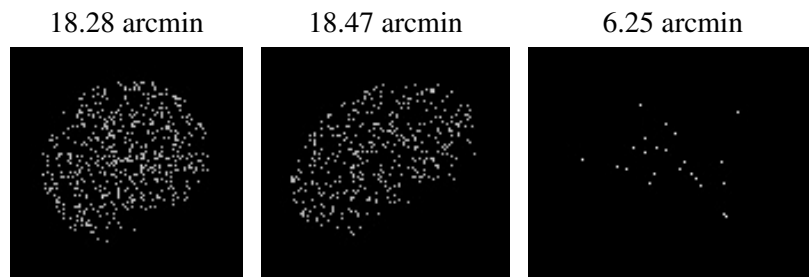
2.5.2 Slot 1



2.5.3 Slot 2



3 Point Sources



A Summary

A.1 Status

V&V Scientist	Jen Lauer
V&V Date (YYYY-MM-DD)	2006.11.24
V&V Edition	1
V&V Disposition and Status	OK
V&V Charge Time	4.56

A.2 Comments