

V&V Reference Report

L2 ASCDS Version : 8.4.5

Observation 226 - L2 Version 4
Chandra X-Ray Center

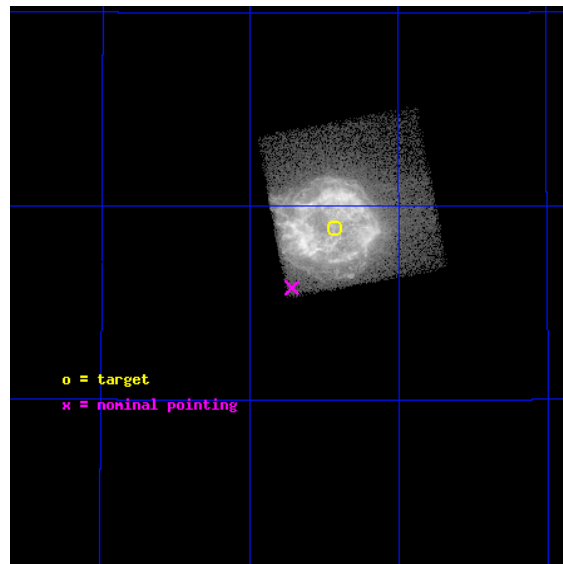
L2 Processing Date : Aug 23 2012

Contents

1	Front	2
2	OBI	3
2.1	OBI	3
2.1.1	Images	3
2.1.2	Bias	3
2.1.3	Parameters	4
2.1.4	Events	4
2.2	Compared Parameters	5
2.3	Aspect	6
2.4	Star Slots	9
2.4.1	Slot 3	9
2.4.2	Slot 4	10
2.4.3	Slot 5	11
2.4.4	Slot 6	12
2.4.5	Slot 7	13
2.5	FID Slots	14
2.5.1	Slot 0	14
2.5.2	Slot 1	15
2.5.3	Slot 2	16
A	Summary	17
A.1	Status	17
A.2	Comments	17

1 Front

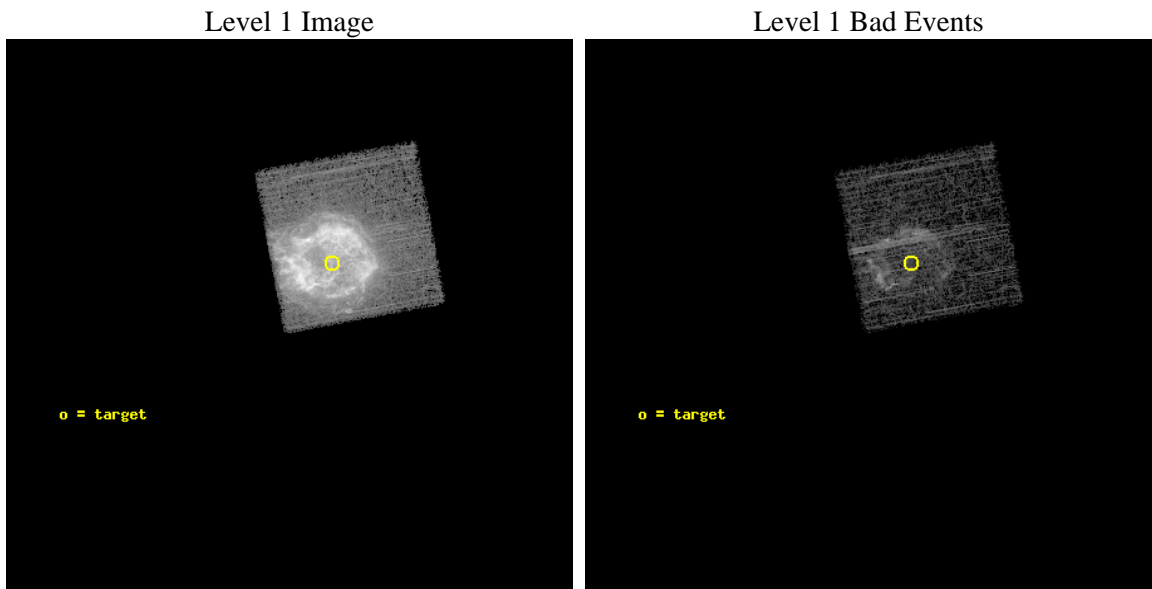
seq_num	590094	Sequence number
obs_id	226	Observation id
title	ACIS CHIP RESPONSE TO CAS A, APR. 99	Proposal title
observer	Dr. CXC Calibration	Principal investigator
object	CAS A [Chip I3, T=120, Offsets=-2,2,0]	Source name
dtcycle	0	
cycle	P	events from which exps? Prim/Second/Both
ra_targ	350.8575	Observer's specified target RA [deg]
dec_targ	58.814833	Observer's specified target Dec [deg]
ra_nom	350.92947823588	Nominal RA [deg]
dec_nom	58.763295526987	Nominal Dec [deg]
roll_nom	349.46023380121	Nominal Roll [deg]
revision	4	Processing version of data
ontime	2744.3940924555	Sum of GTIs [s]
livetime	2709.6429219811	Livetime [s]
ontime0	4037.6585663706	Sum of GTIs [s]
ontime1	4037.6175263673	Sum of GTIs [s]
ontime2	4037.5764863789	Sum of GTIs [s]
ontime3	2744.3940924555	Sum of GTIs [s]
ontime6	4037.4944063723	Sum of GTIs [s]
ontime7	4037.6996063739	Sum of GTIs [s]
l2events	606581	Number of level 2 events



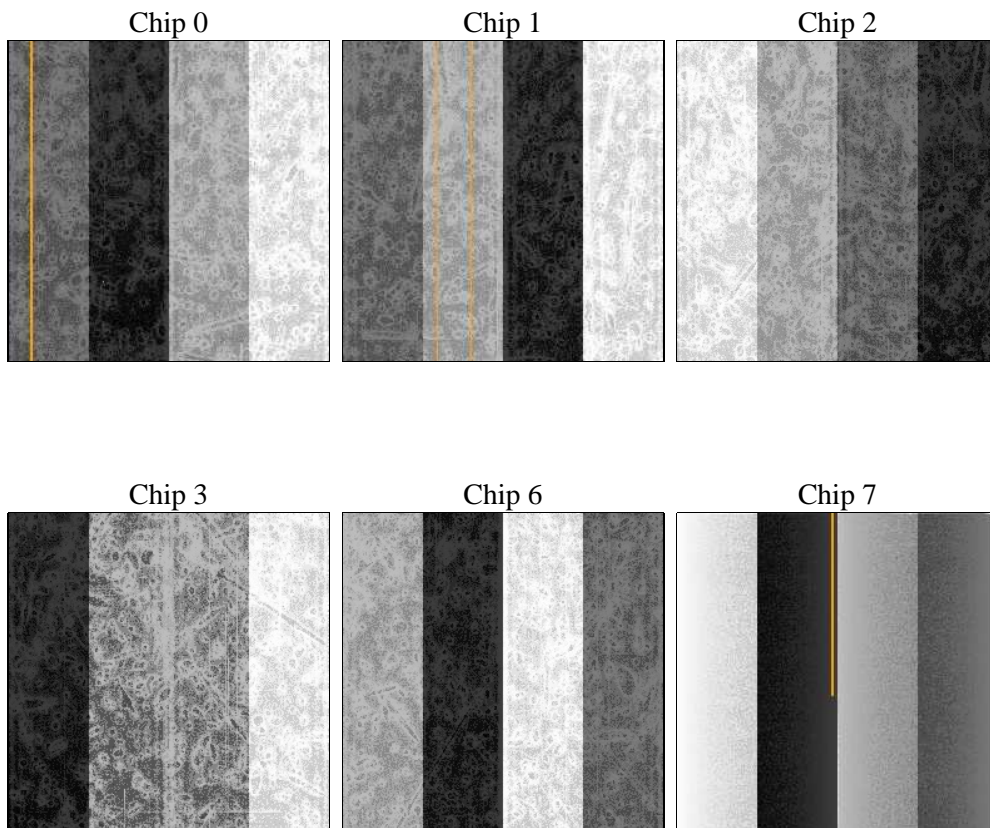
2 OBI

2.1 OBI

2.1.1 Images



2.1.2 Bias



2.1.3 Parameters

obi_num	0	Obi number	sched_exp_time	5000.000000	[s] Scheduled observation exposure time
ascdsver	8.4.5	Processing system revision	ontime	2744.3940924555	Sum of GTIs [s]
caldbver	4.5.1.1	 	ontime0	4037.6585663706	Sum of GTIs [s]
date	2012-08-23T19:03:49	Date and time of file creation	ontime1	4037.6175263673	Sum of GTIs [s]
revision	4	Processing version of data	ontime2	4037.5764863789	Sum of GTIs [s]
			ontime3	2744.3940924555	Sum of GTIs [s]
			ontime6	4037.4944063723	Sum of GTIs [s]
			ontime7	4037.6996063739	Sum of GTIs [s]
			l1events	741489	Number of level 1 events

2.1.4 Events

	ccd 0	ccd 1	ccd 2	ccd 3	ccd 6	ccd 7
level 1 events	0	0	0	741489	0	0
rejected events	0	0	0	107083	0	0
rejected %	0%	0%	0%	14%	0%	0%

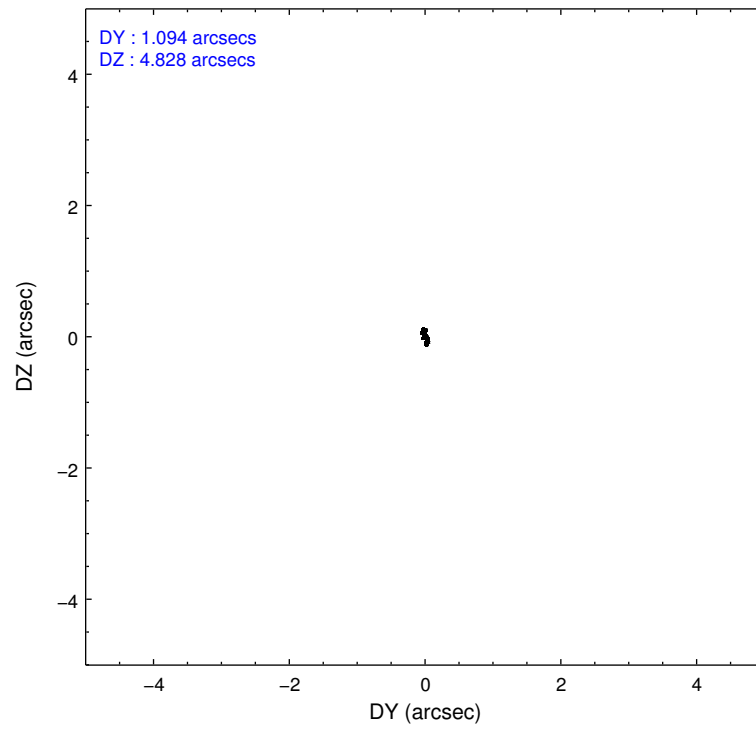
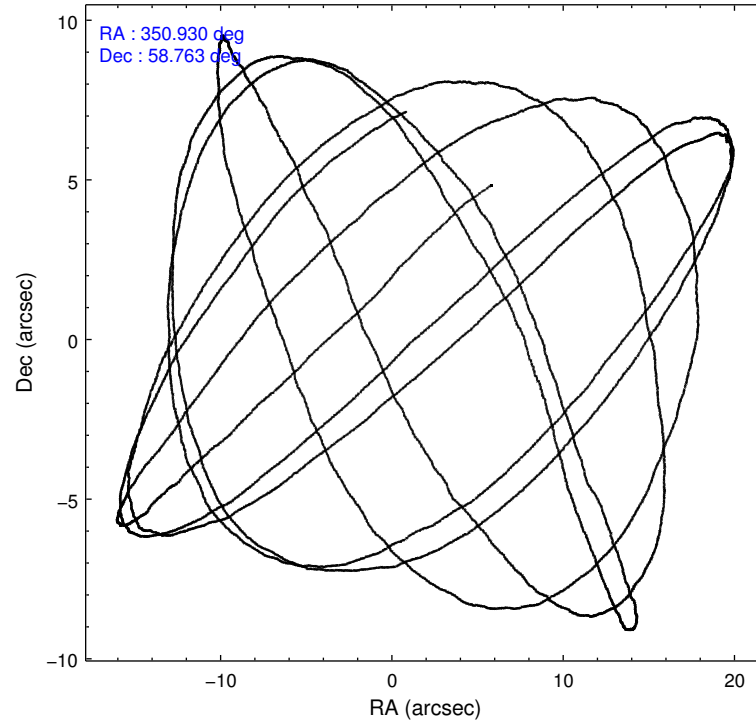
	ccd 0	ccd 1	ccd 2	ccd 3	ccd 6	ccd 7
grade 0 events	0	0	0	514430	0	0
	0%	0%	0%	69%	0%	0%
grade 1 events	0	0	0	8795	0	0
	0%	0%	0%	1%	0%	0%
grade 2 events	0	0	0	65917	0	0
	0%	0%	0%	8%	0%	0%
grade 3 events	0	0	0	20570	0	0
	0%	0%	0%	2%	0%	0%
grade 4 events	0	0	0	20240	0	0
	0%	0%	0%	2%	0%	0%
grade 5 events	0	0	0	5651	0	0
	0%	0%	0%	0%	0%	0%
grade 6 events	0	0	0	14021	0	0
	0%	0%	0%	1%	0%	0%
grade 7 events	0	0	0	91865	0	0
	0%	0%	0%	12%	0%	0%

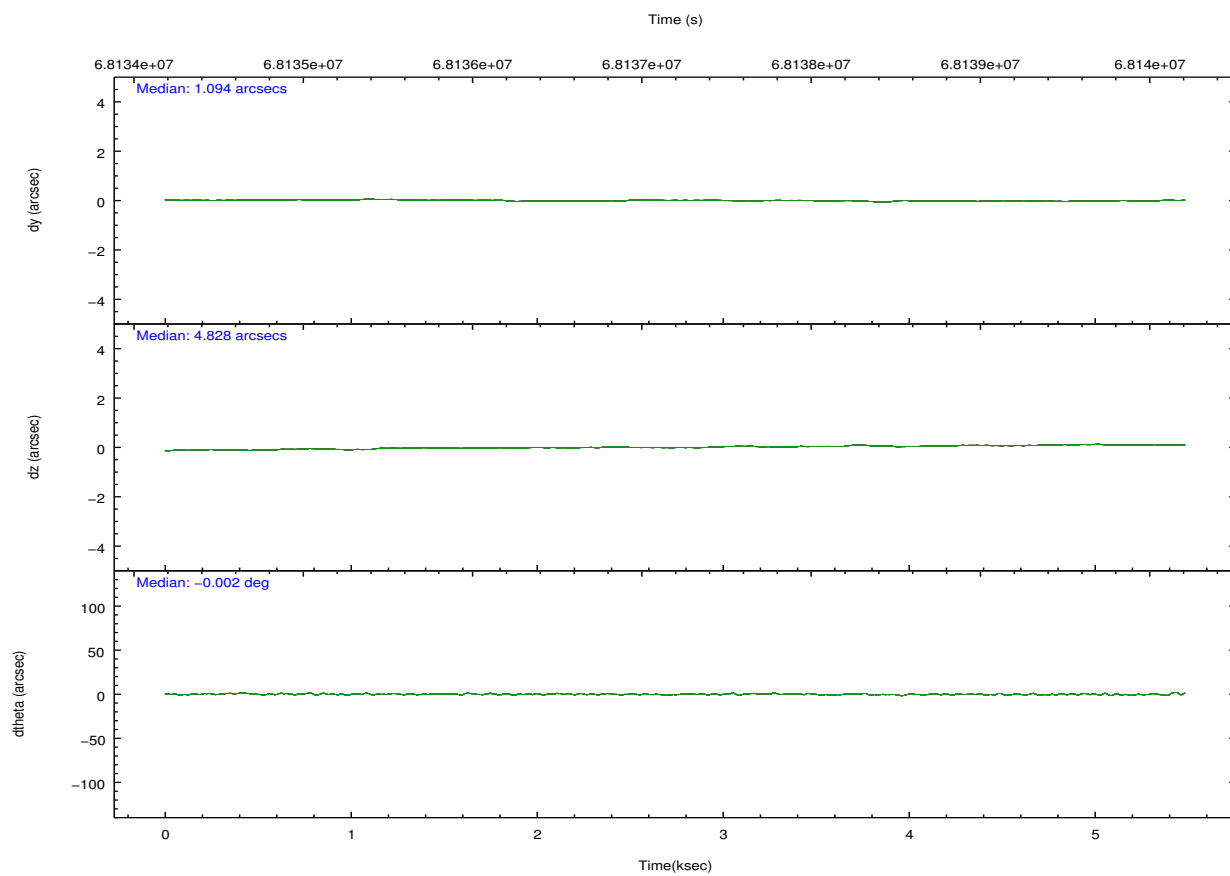
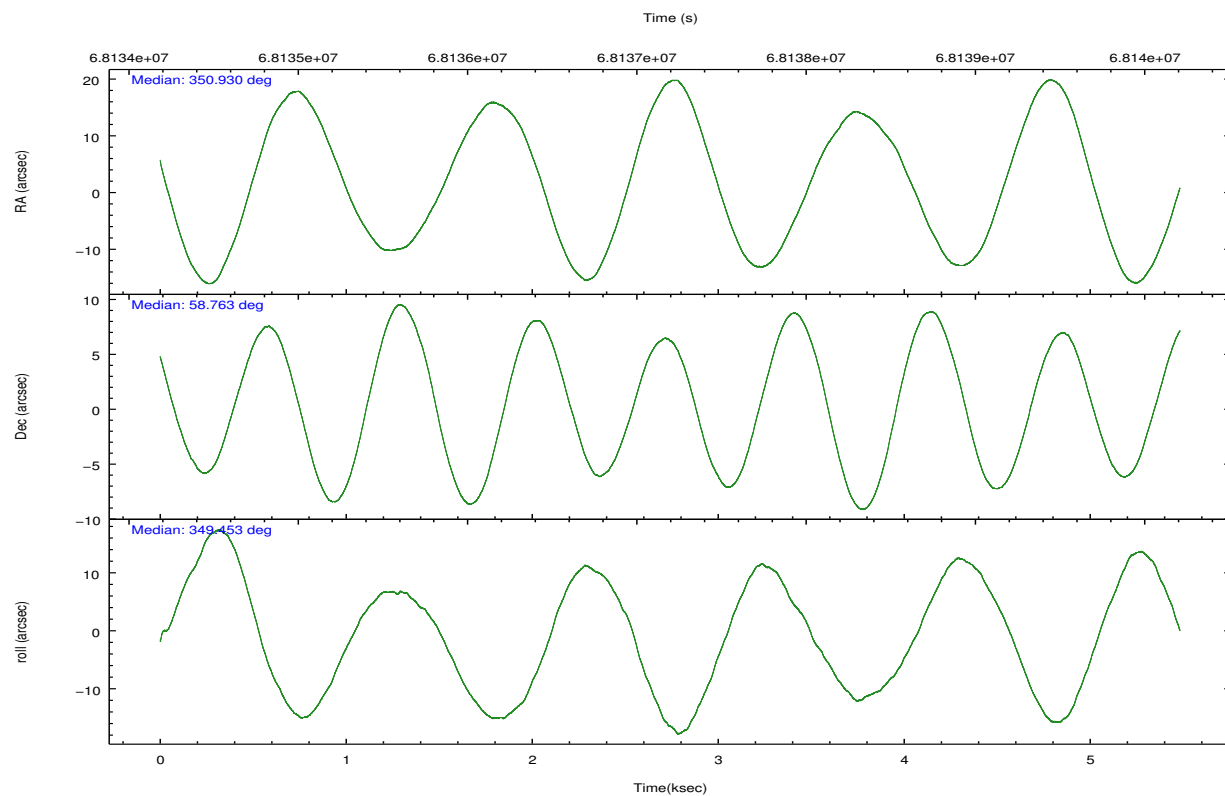
2.2 Compared Parameters

Parameter	Planned	Actual
Instrument	ACIS	ACIS
Detector	ACIS-012367	ACIS-012367
Grating	NONE	NONE
Data mode	FAINT	FAINT
Observation mode	POINTING	POINTING
[deg] Pointing RA	350.879307	350.9294782358759
[deg] Pointing Dec	58.754346	58.7632955269866
[deg] Pointing Roll	349.294453	349.4602338012123
[s] Window start time (MET)	65750464.184000	65750464.184000
[s] Window stop time (MET)	68256064.184000	68256064.184000
[mm] SIM focus pos	-0.782348	-0.7809083437167272
[mm] SIM defocus	0	0.001439871863259334
[mm] SIM translation stage pos	-233.592463	-233.5874344608287
[mm] SIM translation stage offset	0	-0.005018542100998502
[s] Observation start time (MET)	68134939.184000	68134272.76098301
Observation start date	2000-02-28T14:21:15	2000-02-28T14:11:12
[s] Observation end time (MET)	68139939.184000	68140072.723694
Observation end date	2000-02-28T15:44:35	2000-02-28T15:47:52
Read mode	TIMED	TIMED

Parameter	Planned	Actual
Obspar format version number	7	7
Obspar file type	PREDICTED	ACTUAL
Obspar update status	NONE	UPDATED
Number of optional ACIS chips dropped	0	0
On-chip summing requested	N	N
Subarray requested	NONE	NONE
Alternating exposures requested	N	N
[s] Primary exposure time	0.000000	3.2

2.3 Aspect



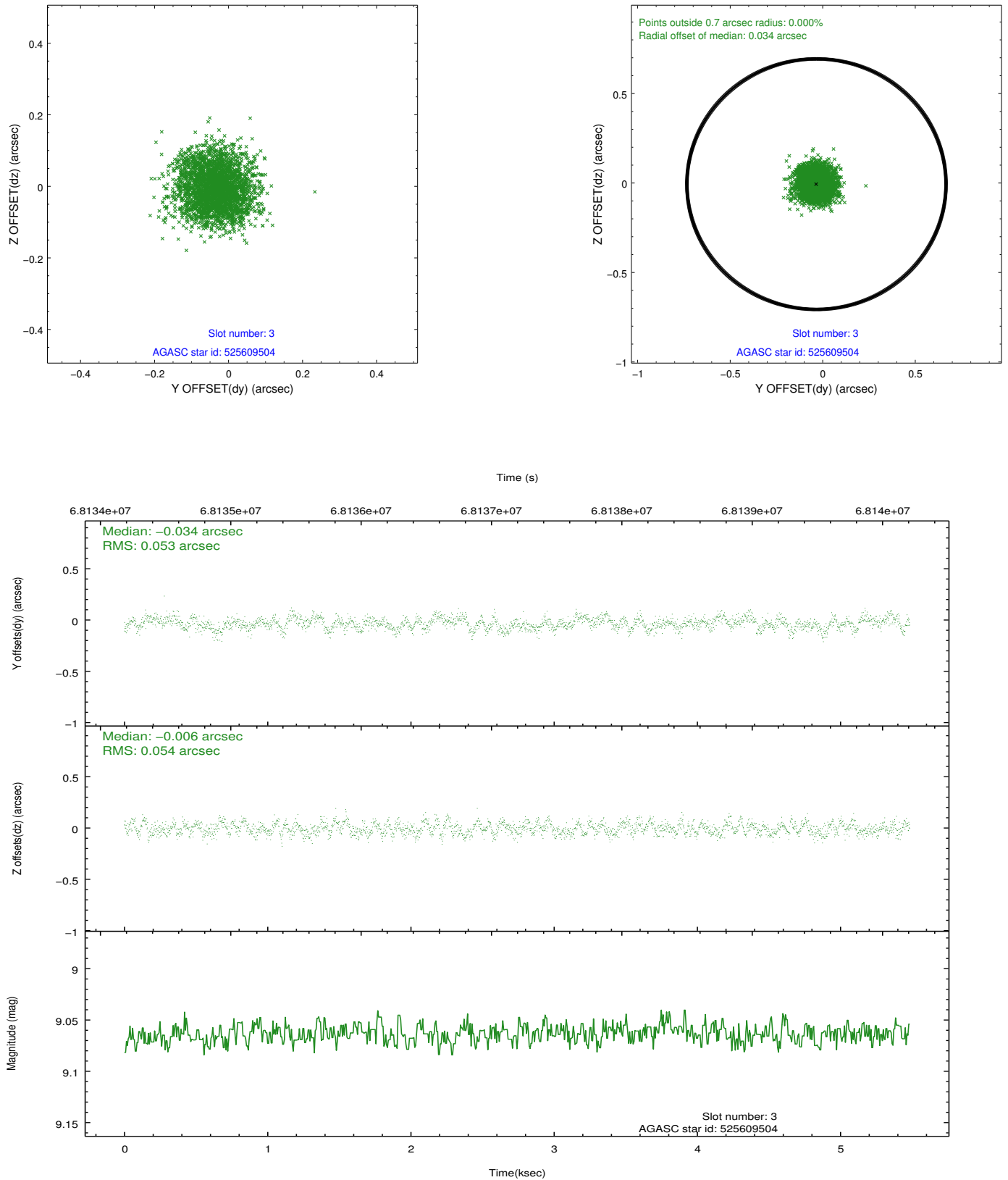


Slot Statistics

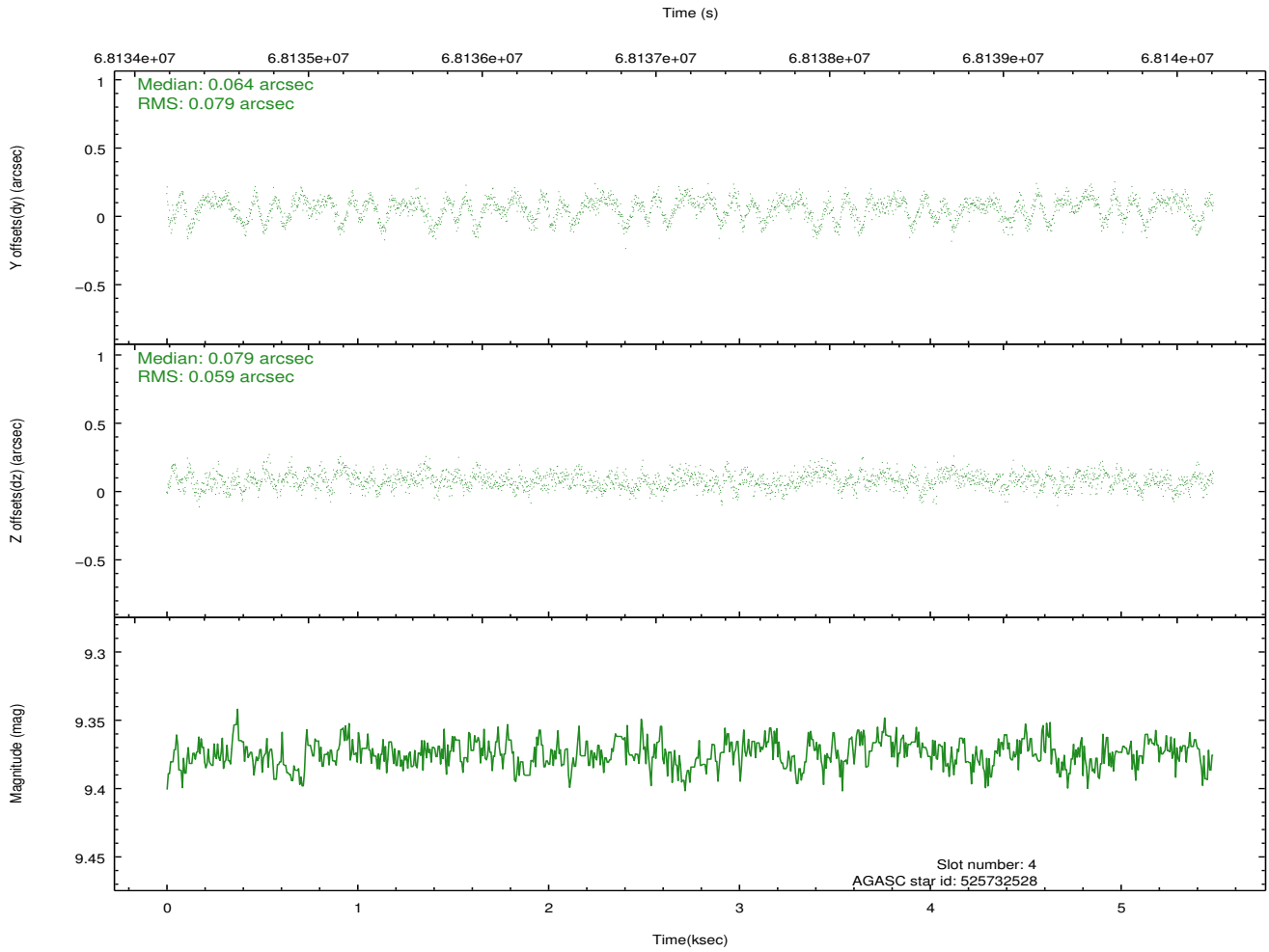
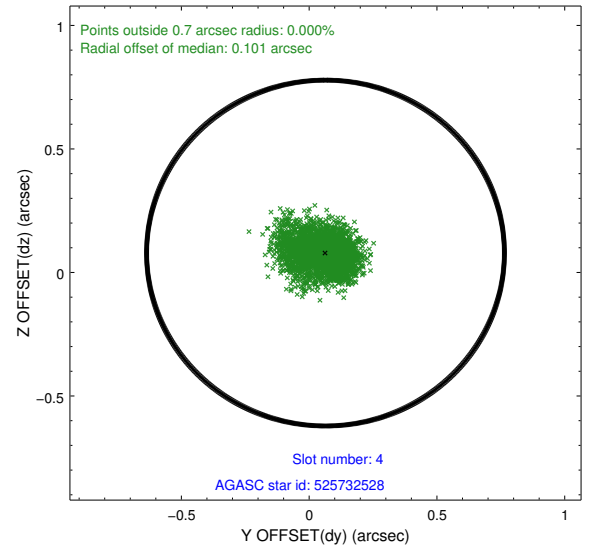
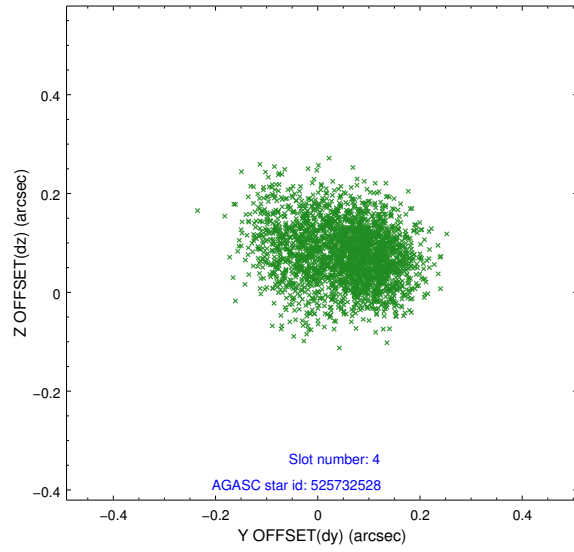
slot	status	id	mag	n_pts	med_dy	med_dz	dr1	dr2	ra	dec	mean_y	mean_z
0	FID	ACIS-I-2	7.15	1338	-0.032	-0.035	0.009	0.014	0.000000	0.000000	-755.45	-834.57
1	FID	ACIS-I-4	7.19	1338	-0.025	0.036	0.007	0.013	0.000000	0.000000	2158.12	1071.13
2	FID	ACIS-I-5	7.23	1338	-0.044	0.068	0.009	0.015	0.000000	0.000000	-1807.88	1070.26
3	GUIDE	525609504	9.06	2675	-0.034	-0.006	0.082	0.128	349.896632	58.356658	-1560.24	-1738.41
4	GUIDE	525732528	9.37	2675	0.064	0.079	0.104	0.174	351.607241	59.298932	948.12	2181.63
5	GUIDE	525734296	9.48	2672	0.081	-0.014	0.075	0.122	351.276372	58.418153	960.36	-1047.09
6	GUIDE	525601208	9.22	2673	-0.174	0.076	0.107	0.171	349.910779	59.483724	-2230.22	2263.25
7	GUIDE	525207384	9.74	2674	0.067	-0.135	0.119	0.192	351.880308	58.083642	2317.19	-2003.76

2.4 Star Slots

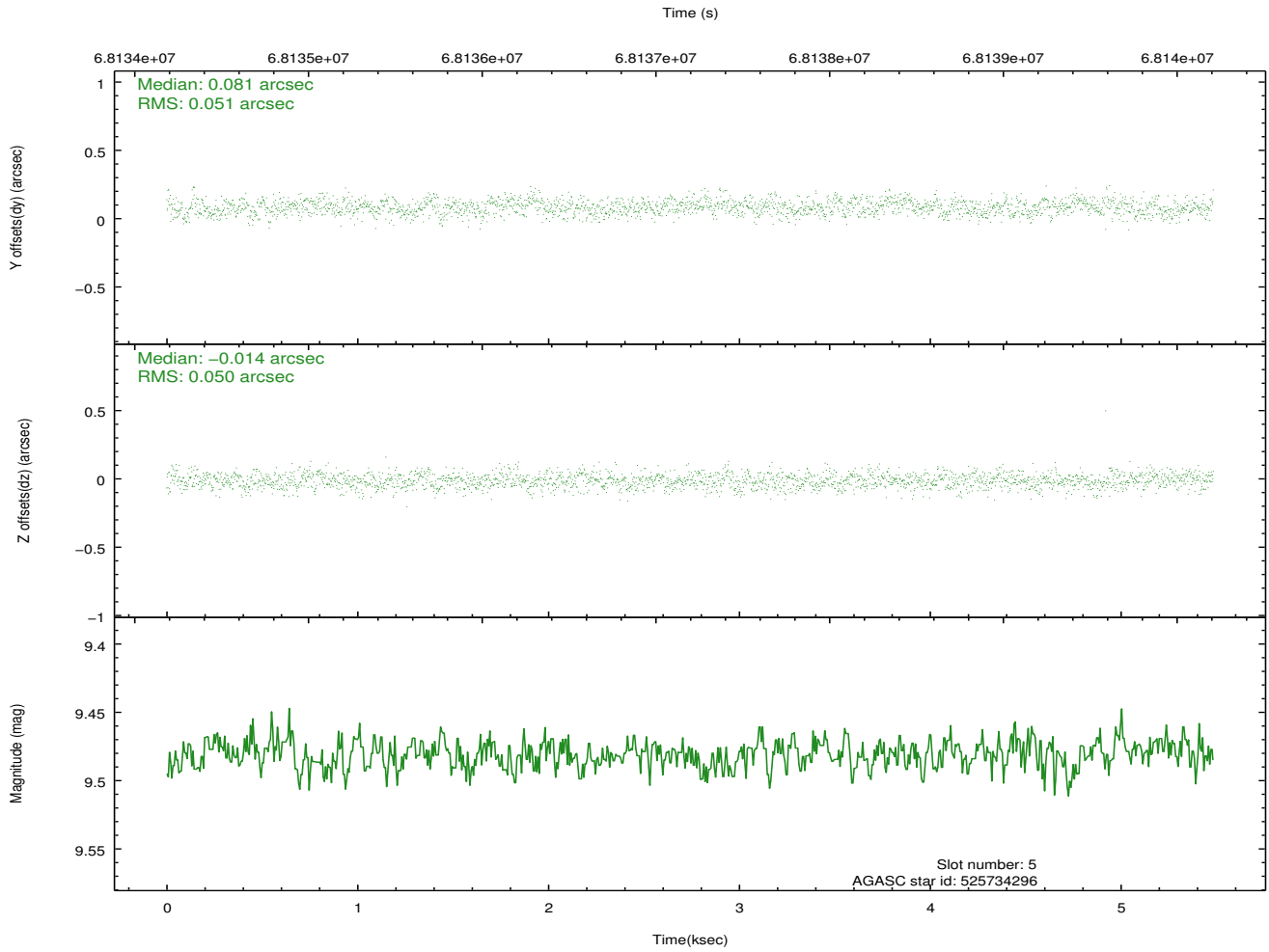
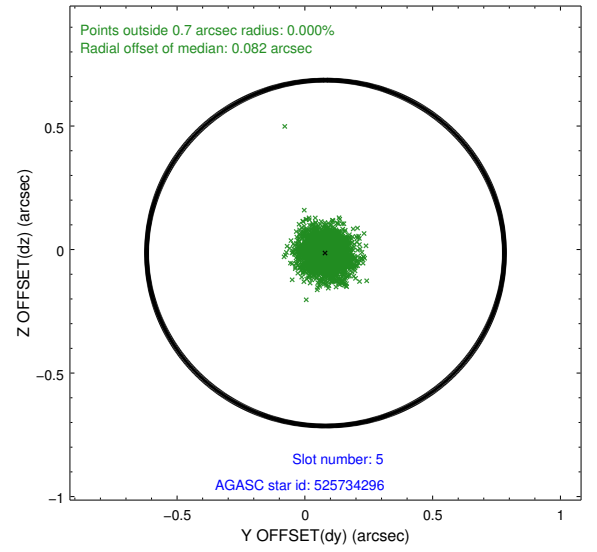
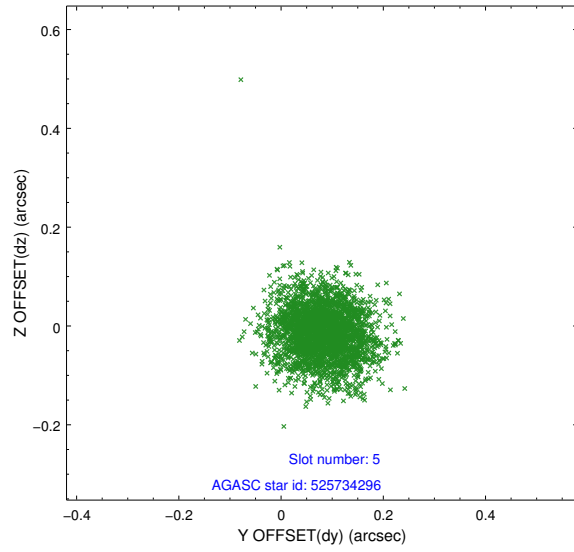
2.4.1 Slot 3



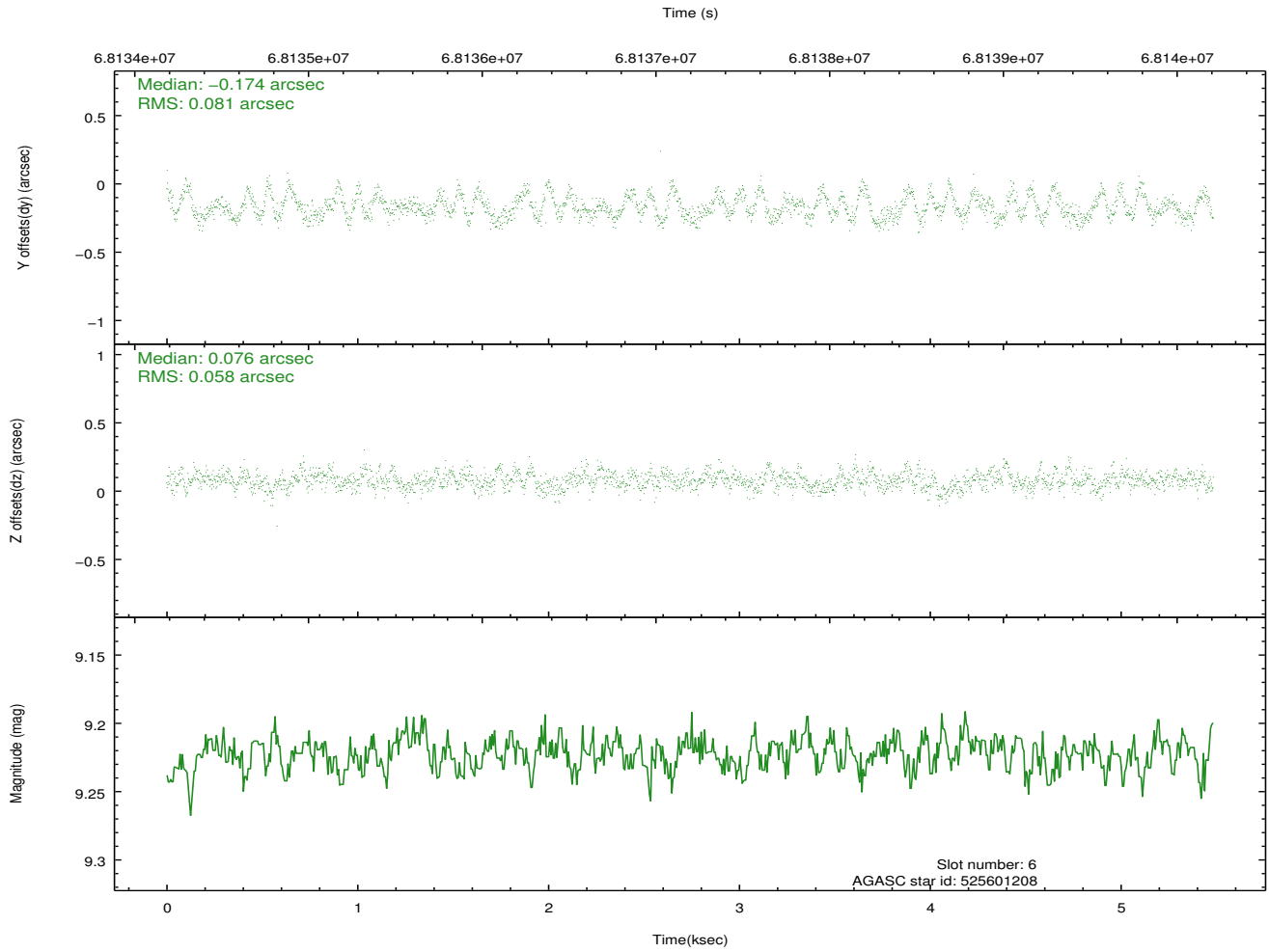
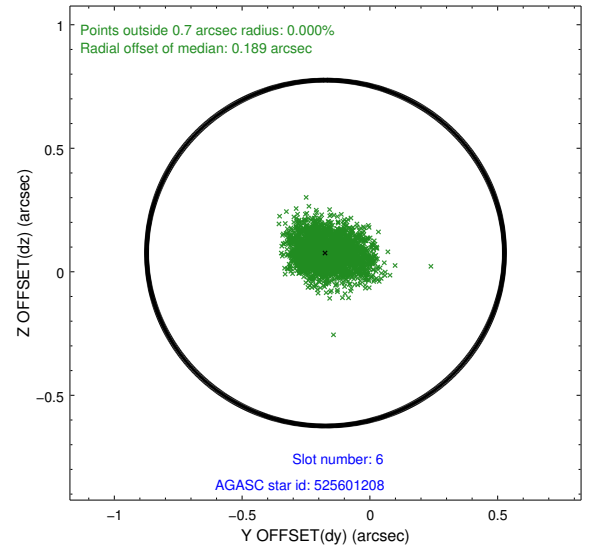
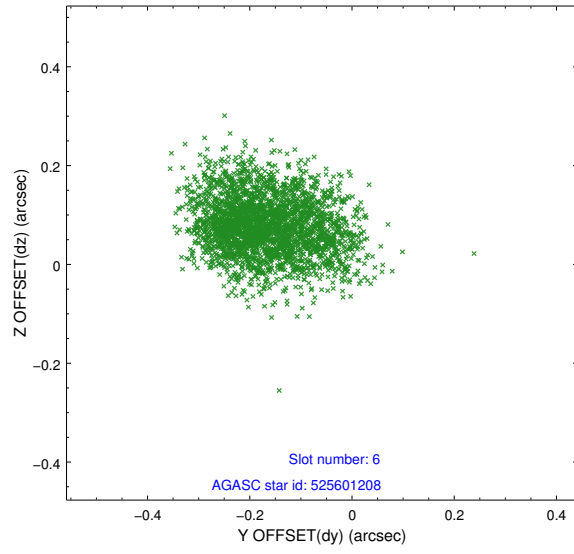
2.4.2 Slot 4



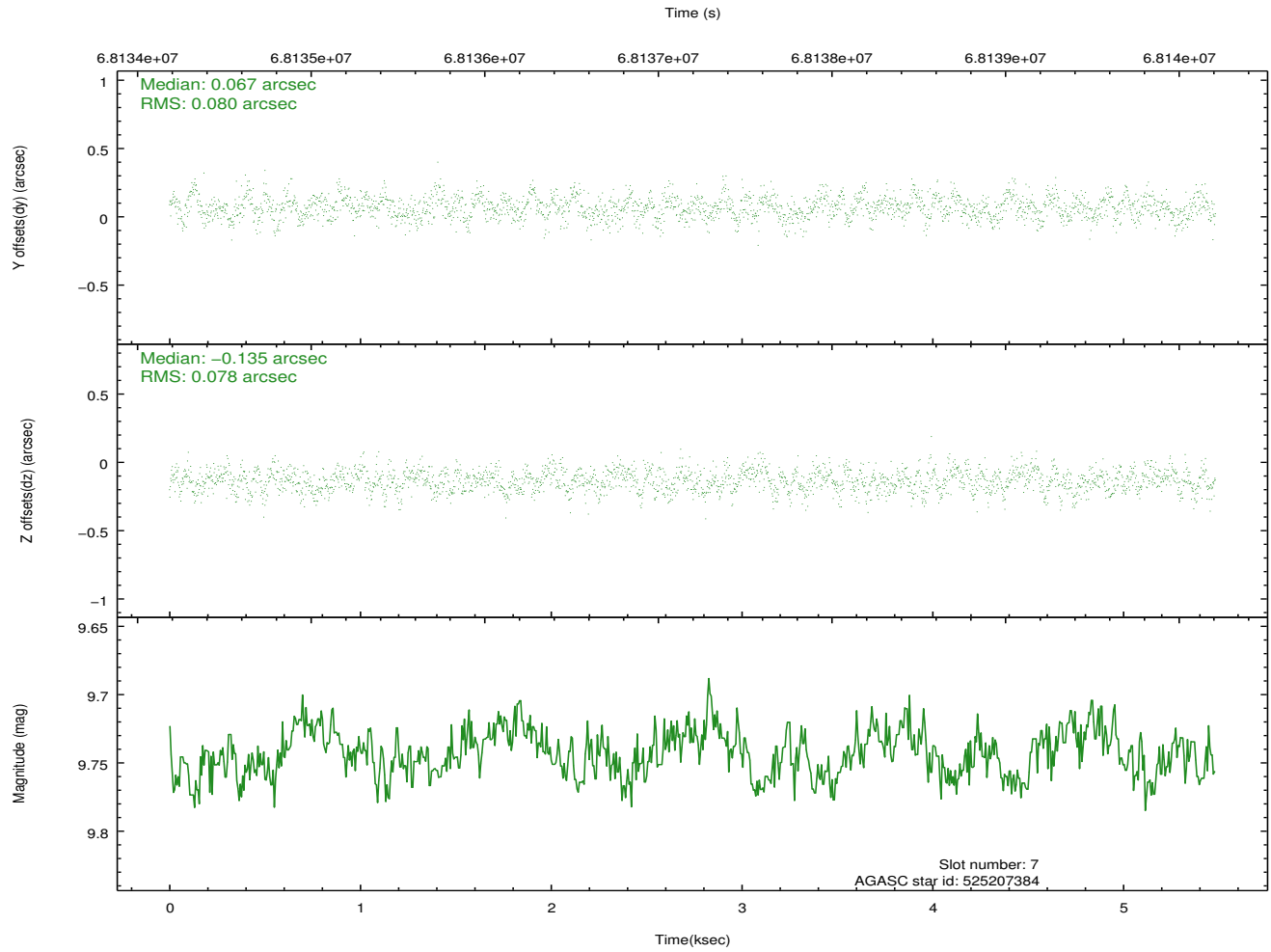
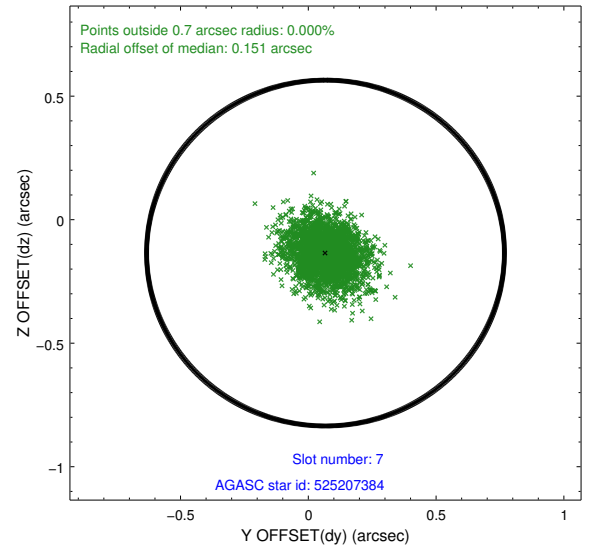
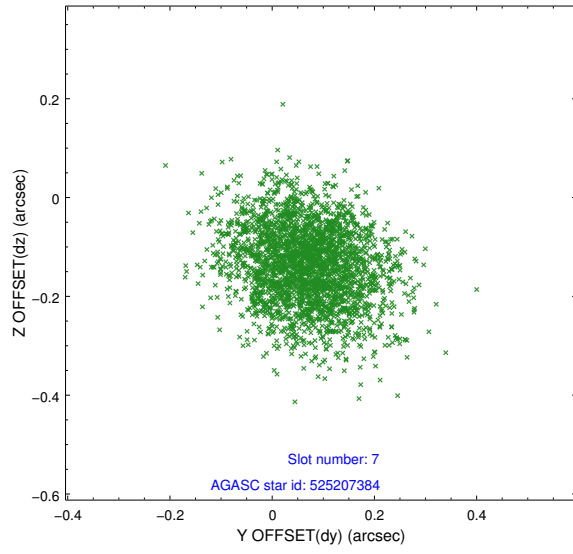
2.4.3 Slot 5



2.4.4 Slot 6

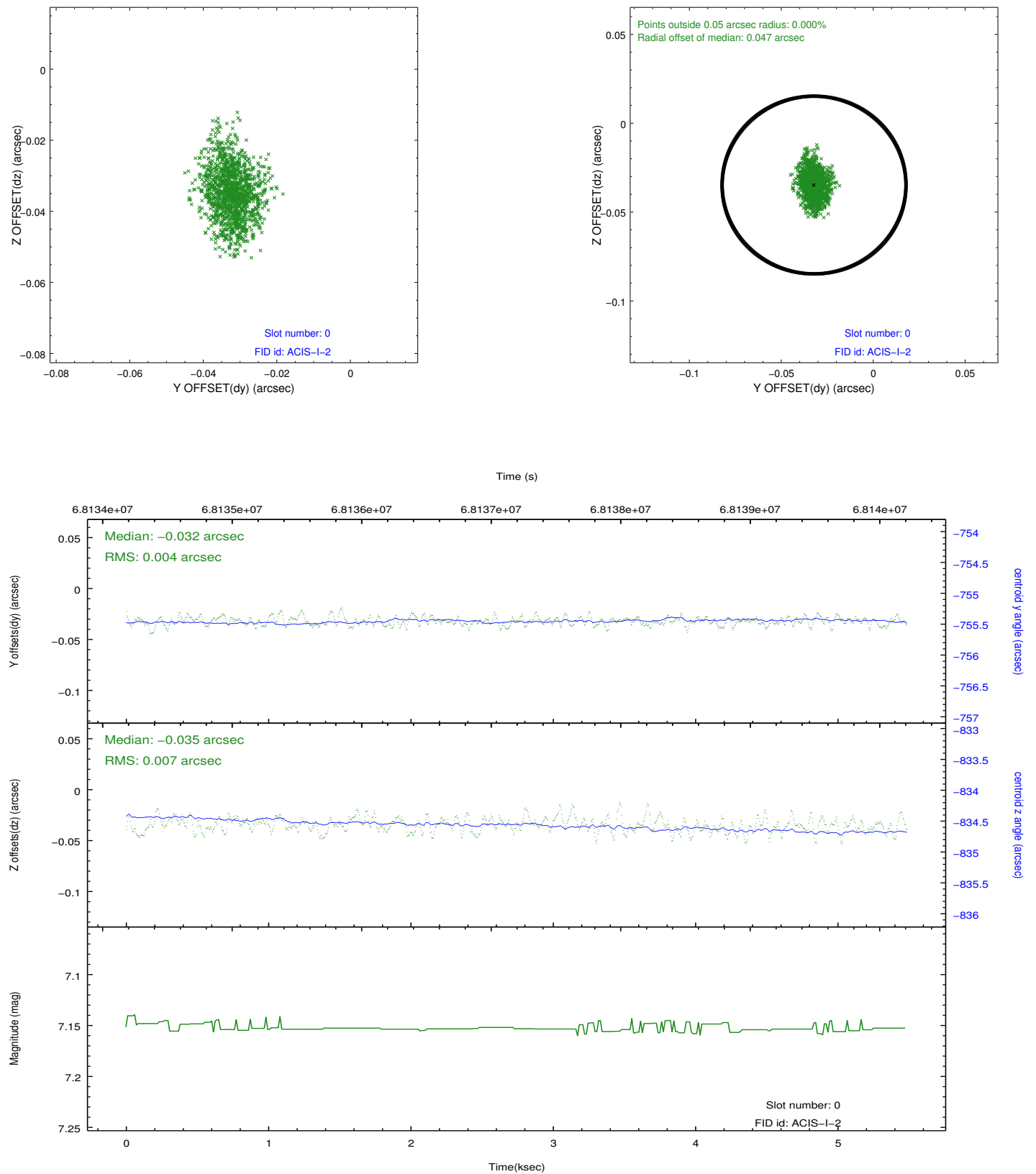


2.4.5 Slot 7

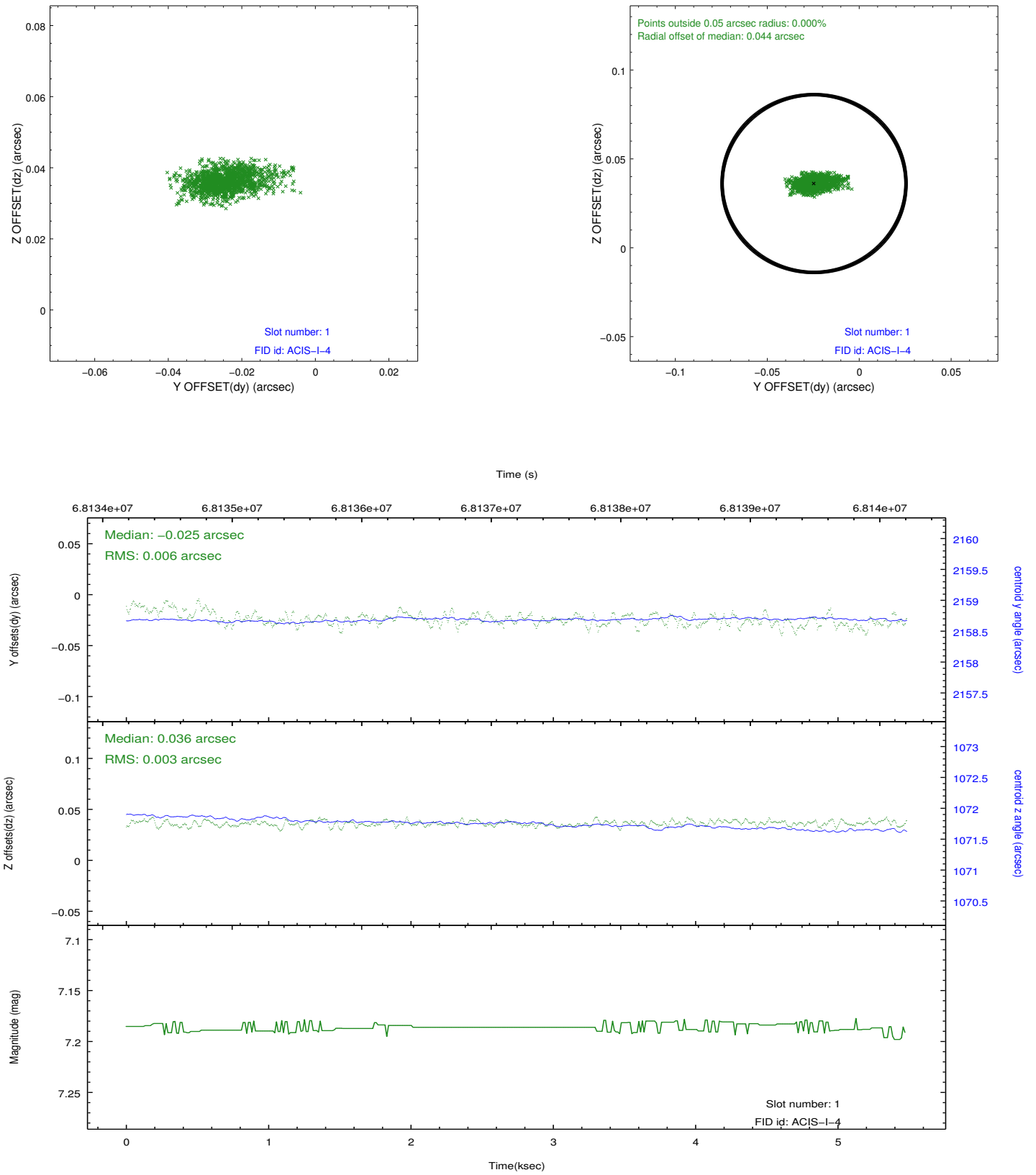


2.5 FID Slots

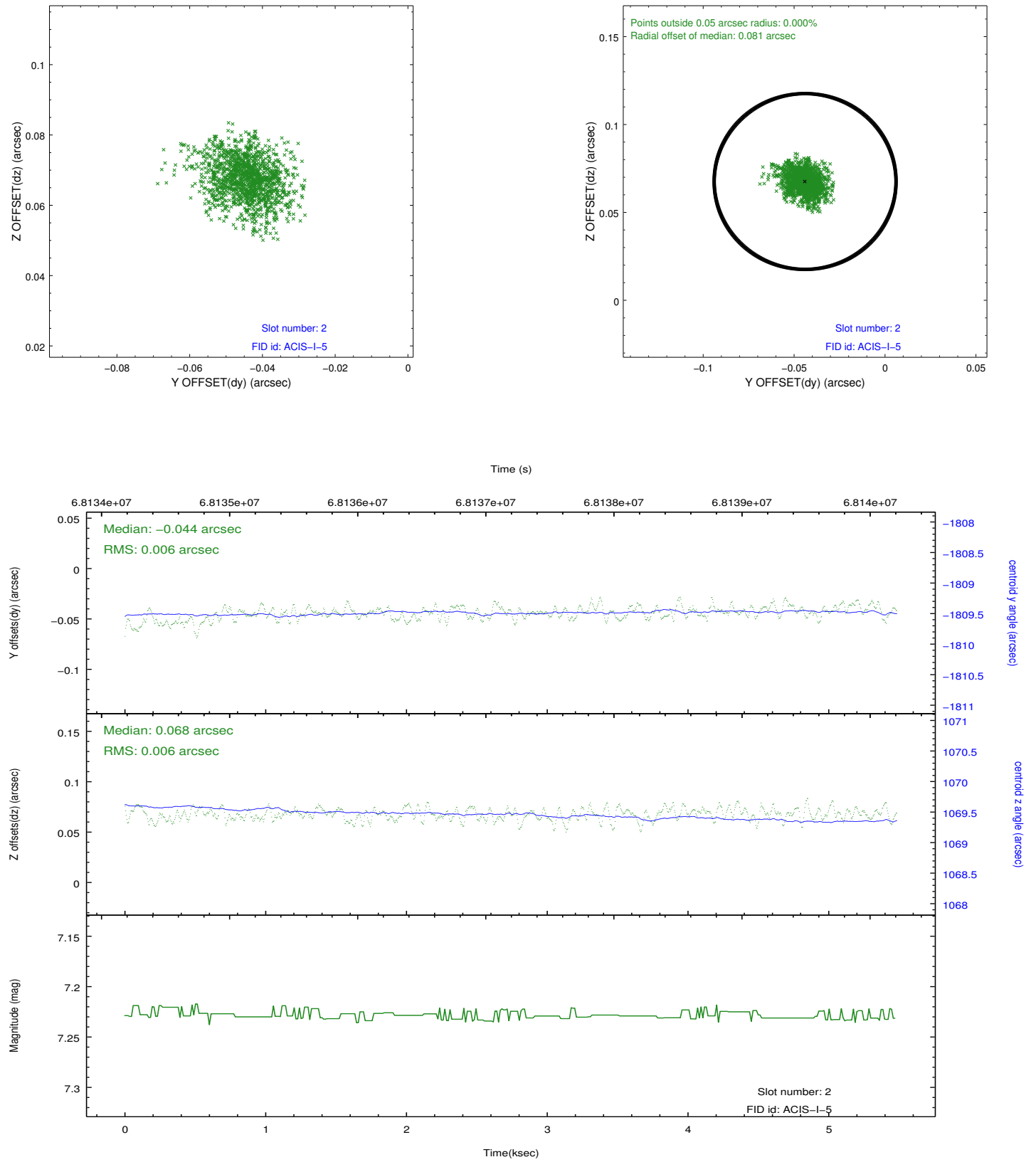
2.5.1 Slot 0



2.5.2 Slot 1



2.5.3 Slot 2



A Summary

A.1 Status

V&V Scientist	Jen Lauer
V&V Date (YYYY-MM-DD)	2012.08.24
V&V Edition	1
V&V Disposition and Status	OK
V&V Charge Time	2.761

A.2 Comments

Charge time for this ObsId remains at previous value of 2.761 ks although with the current processing the charge time would have been 2.74 ksec. Window constraint met.