

V&V Reference Report

L2 ASCDS Version : 8.4.5

Observation 2246 - L2 Version 3
Chandra X-Ray Center

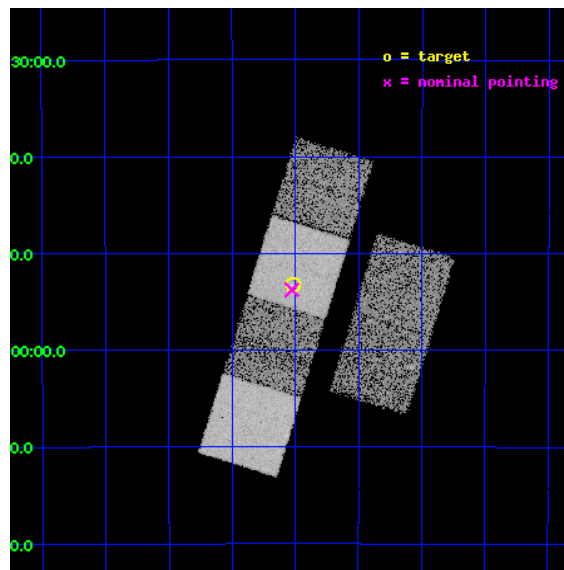
L2 Processing Date : Sep 6 2012

Contents

1	Front	2
2	OBI	3
2.1	OBI	3
2.1.1	Images	3
2.1.2	Bias	3
2.1.3	Parameters	4
2.1.4	Events	4
2.2	Compared Parameters	5
2.3	Aspect	6
2.4	Star Slots	9
2.4.1	Slot 0	9
2.4.2	Slot 1	10
2.4.3	Slot 2	11
2.4.4	Slot 6	12
2.4.5	Slot 7	13
2.5	FID Slots	14
2.5.1	Slot 3	14
2.5.2	Slot 4	15
2.5.3	Slot 5	16
A	Summary	17
A.1	Status	17
A.2	Comments	17

1 Front

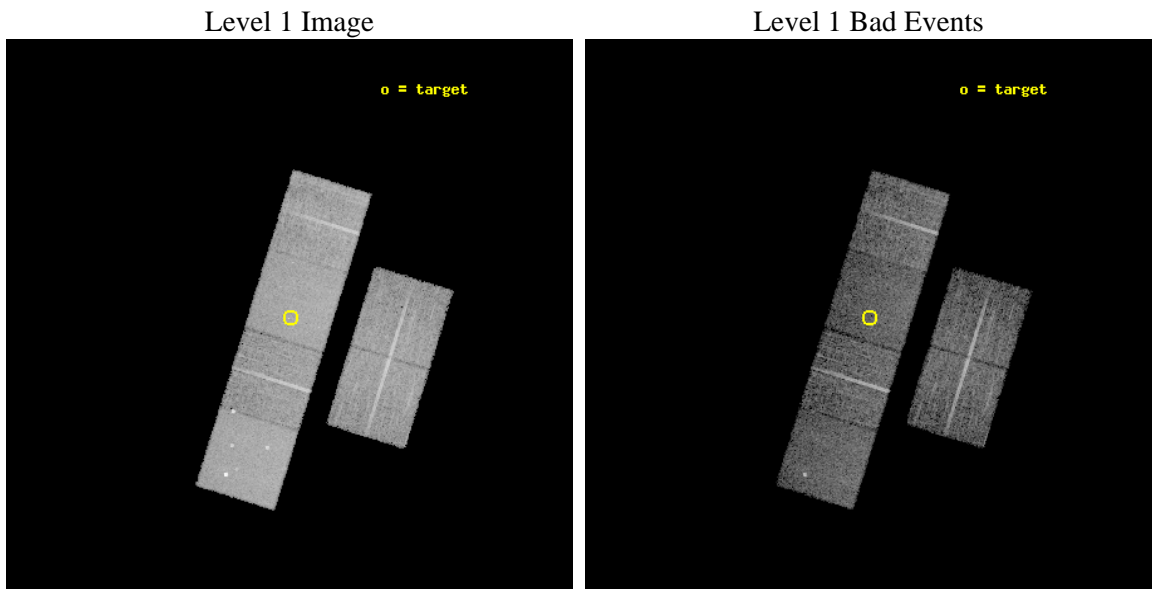
seq_num	900073	Sequence number
obs_id	2246	Observation id
title	THE NATURE OF NARROW-LINE, FIR-LUMINOUS, X-RAY GALAXIES	Proposal t
observer	PROFESSOR TOM SHANKS	Principal investigator
object	GSGP4X:091	Source name
dtcycle	0	
cycle	P	events from which exps? Prim/Second/Both
ra_targ	14.505417	Observer's specified target RA [deg]
dec_targ	-27.886389	Observer's specified target Dec [deg]
ra_nom	14.506748554415	Nominal RA [deg]
dec_nom	-27.896141031757	Nominal Dec [deg]
roll_nom	287.28892298626	Nominal Roll [deg]
revision	3	Processing version of data
ontime	9452.7852374166	Sum of GTIs [s]
livetime	9333.0883789565	Livetime [s]
ontime2	9452.8000087887	Sum of GTIs [s]
ontime3	9449.4211571962	Sum of GTIs [s]
ontime5	9452.7441974133	Sum of GTIs [s]
ontime6	9449.4621971846	Sum of GTIs [s]
ontime7	9452.7852374166	Sum of GTIs [s]
ontime8	9452.6210774183	Sum of GTIs [s]
l2events	95946	Number of level 2 events



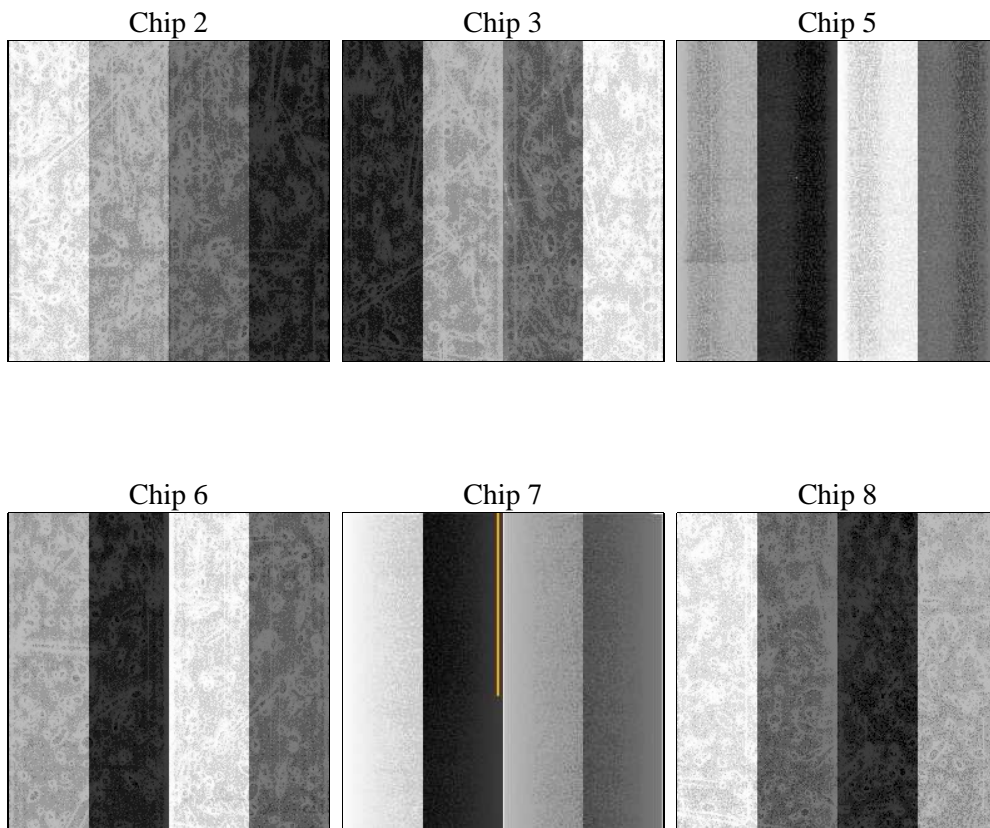
2 OBI

2.1 OBI

2.1.1 Images



2.1.2 Bias



2.1.3 Parameters

obi_num	1	Obi number	sched_exp_time	9500.000000	[s] Scheduled observation exposure time
ascdsver	8.4.5	Processing system revision	ontime	9452.7852374166	Sum of GTIs [s]
caldsver	4.5.1.1	 	ontime2	9452.8000087887	Sum of GTIs [s]
date	2012-09-06T11:17:03	Date and time of file creation	ontime3	9449.4211571962	Sum of GTIs [s]
revision	3	Processing version of data	ontime5	9452.7441974133	Sum of GTIs [s]
			ontime6	9449.4621971846	Sum of GTIs [s]
			ontime7	9452.7852374166	Sum of GTIs [s]
			ontime8	9452.6210774183	Sum of GTIs [s]
			l1events	410654	Number of level 1 events

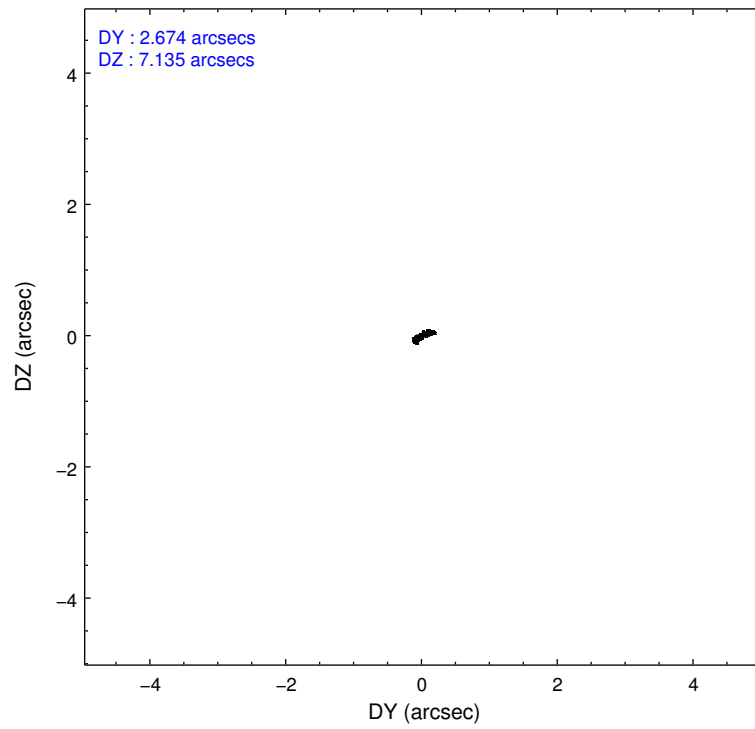
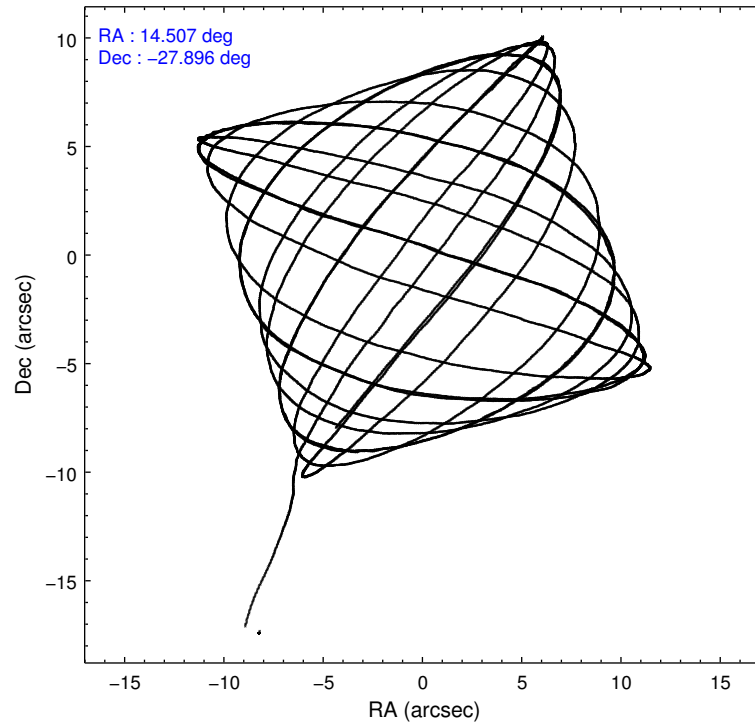
2.1.4 Events

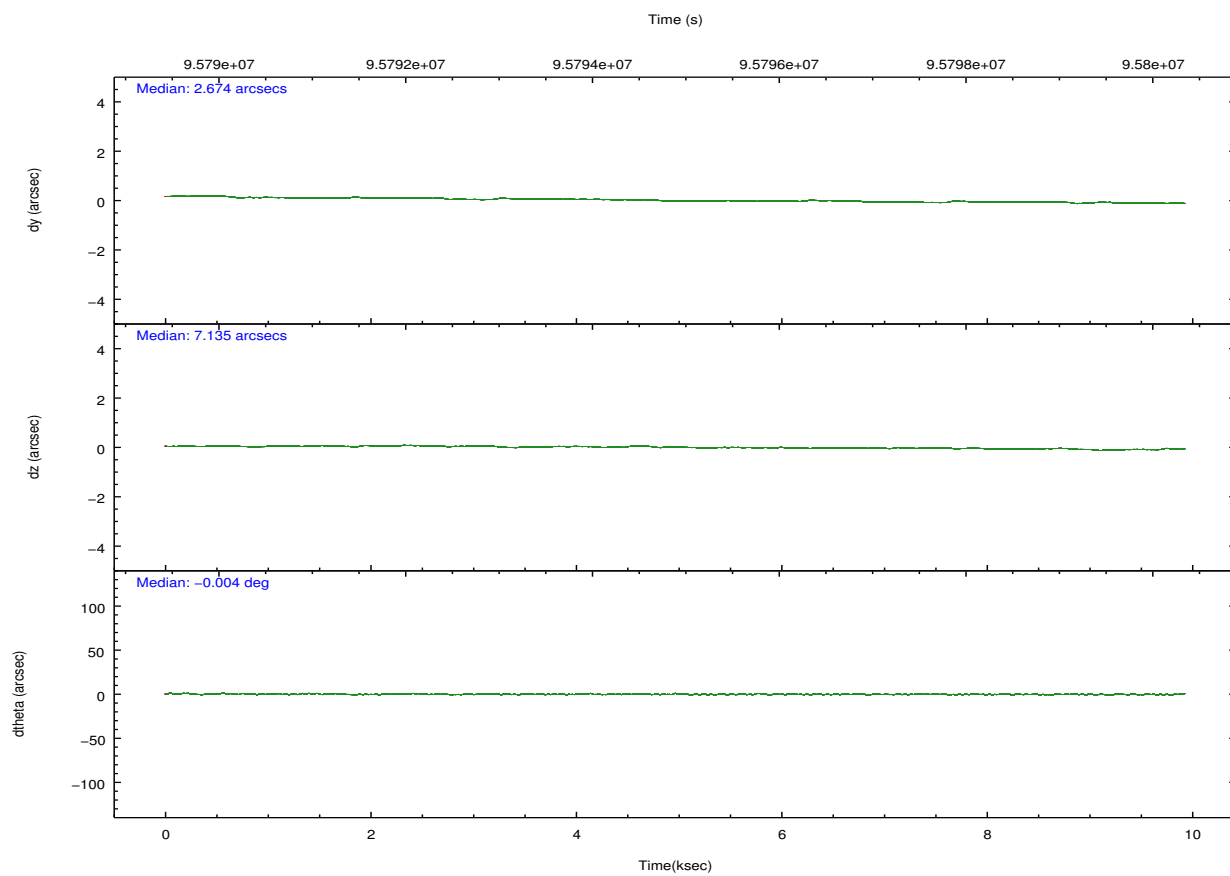
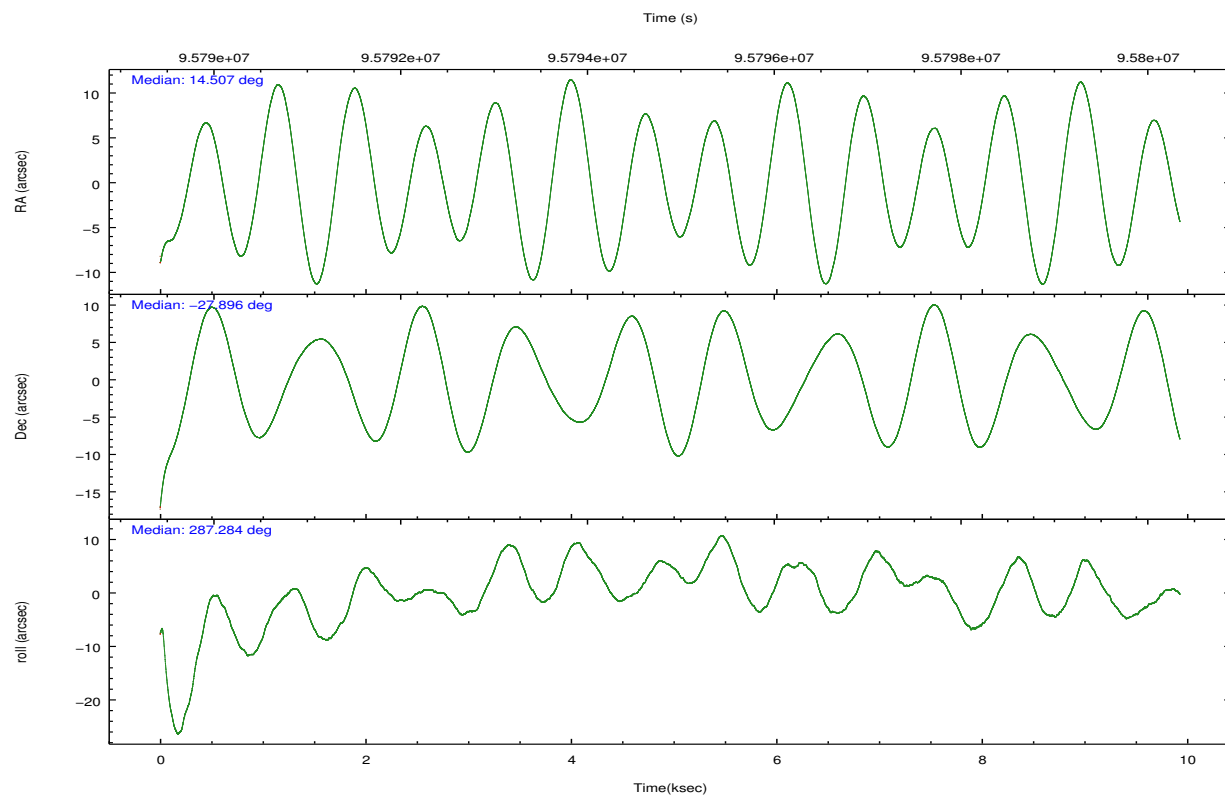
	ccd 2	ccd 3	ccd 5	ccd 6	ccd 7	ccd 8		ccd 2	ccd 3	ccd 5	ccd 6	ccd 7	ccd 8
level 1 events	60648	56251	85327	58525	76180	73723	grade 0 events	3217	3165	5636	3286	3553	5463
rejected events	53422	49042	44054	51005	42427	58302		5%	5%	6%	5%	4%	7%
rejected %	88%	87%	51%	87%	55%	79%	grade 1 events	28	28	362	23	78	53
								0%	0%	0%	0%	0%	0%
							grade 2 events	1559	1508	12325	1570	6441	3190
								2%	2%	14%	2%	8%	4%
							grade 3 events	602	659	1826	667	3069	1716
								0%	1%	2%	1%	4%	2%
							grade 4 events	619	609	1759	647	3067	1593
								1%	1%	2%	1%	4%	2%
							grade 5 events	1980	2155	6151	2519	7066	3044
								3%	3%	7%	4%	9%	4%
							grade 6 events	1230	1269	19734	1351	17631	3468
								2%	2%	23%	2%	23%	4%
							grade 7 events	51413	46858	37534	48462	35275	55196
								84%	83%	43%	82%	46%	74%

2.2 Compared Parameters

Parameter	Planned	Actual	Parameter	Planned	Actual
Instrument	ACIS	ACIS	Obspar format version number	7	7
Detector	ACIS-235678	ACIS-235678	Obspar file type	PREDICTED	ACTUAL
Grating	NONE	NONE	Obspar update status	NONE	UPDATED
Data mode	FAINT	FAINT	Number of optional ACIS chips dropped	0	0
Observation mode	POINTING	POINTING	On-chip summing requested	N	N
[deg] Pointing RA	14.483875	14.50674855441548	Subarray requested	NONE	NONE
[deg] Pointing Dec	-27.877785	-27.8961410317568	Alternating exposures requested	N	N
[deg] Pointing Roll	287.121586	287.2889229862564	[s] Primary exposure time	0.000000	3.2
[mm] SIM focus pos	-0.684267	-0.6828225247311905			
[mm] SIM defocus	0	0.001444936568705701			
[mm] SIM translation stage pos	-190.132523	-190.1425803651734			
[mm] SIM translation stage offset	0	0.01005778216563158			
[s] Observation start time (MET)	95790344.184000	95789266.81826			
Observation start date	2001-01-13T16:24:40	2001-01-13T16:07:46			
[s] Observation end time (MET)	95799844.184000	95800653.031197			
Observation end date	2001-01-13T19:03:00	2001-01-13T19:17:33			
Read mode	TIMED	TIMED			

2.3 Aspect



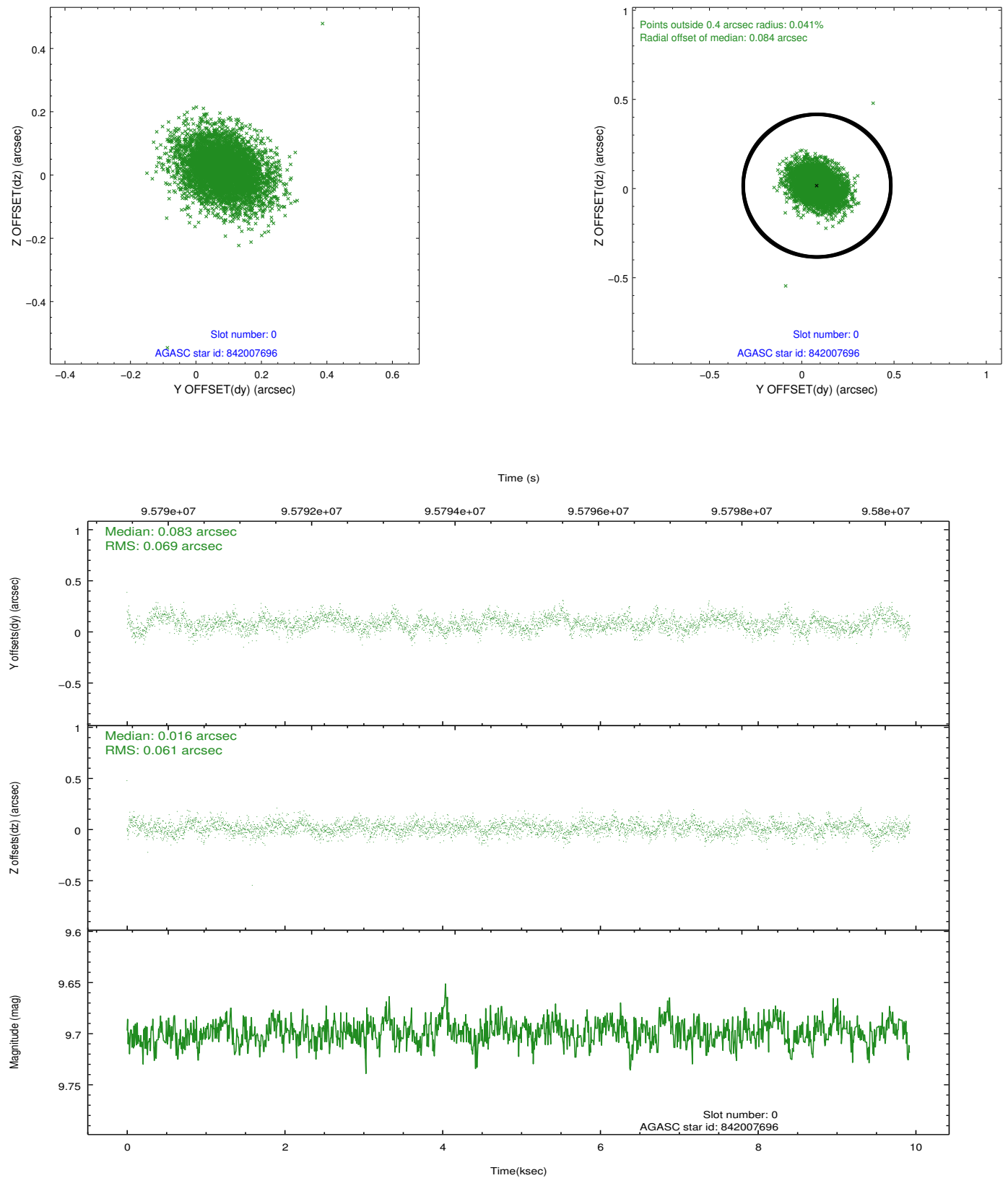


Slot Statistics

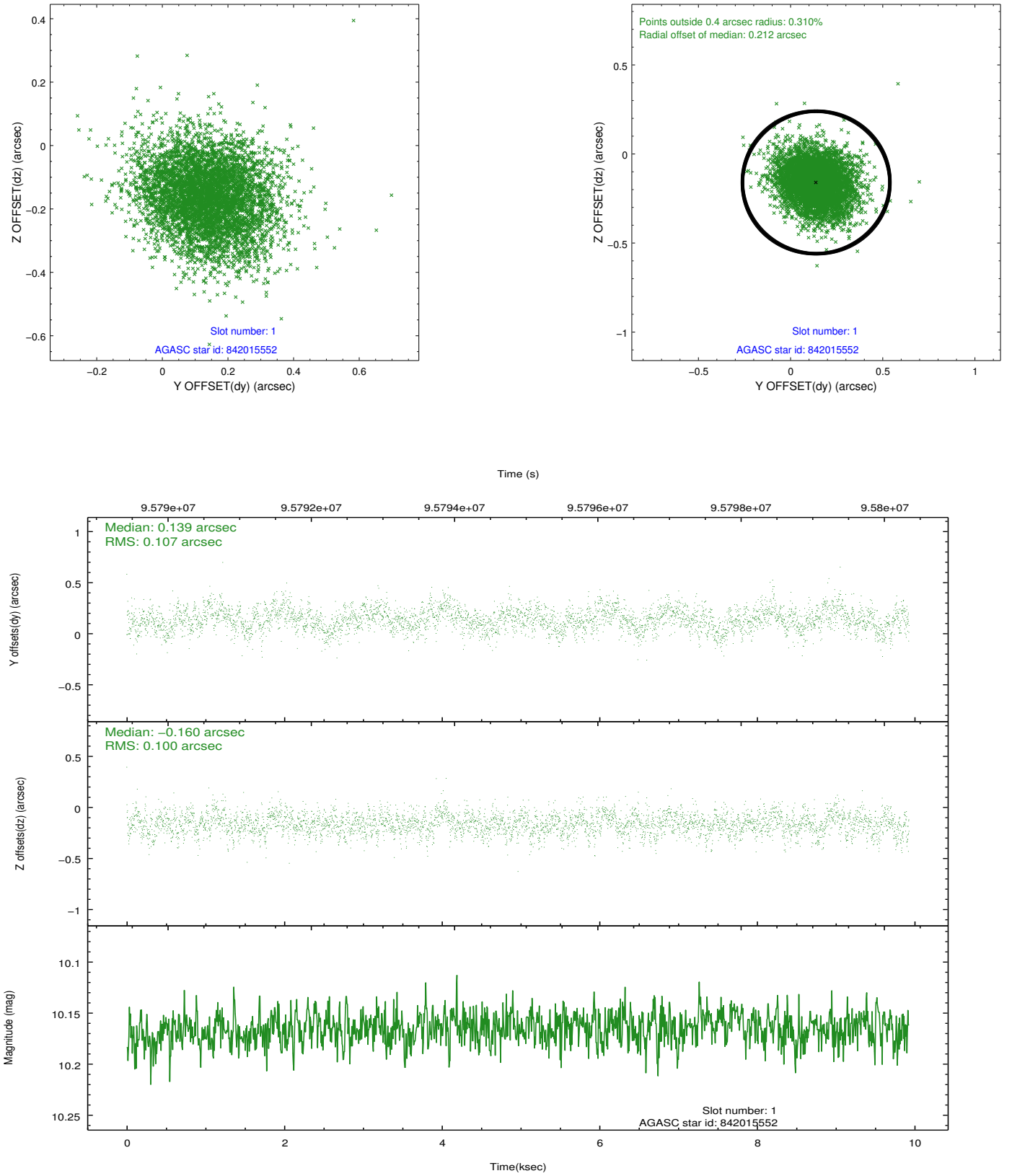
slot	status	id	mag	n_pts	med_dy	med_dz	dr1	dr2	ra	dec	mean_y	mean_z
0	GUIDE	842007696	9.70	4842	0.083	0.016	0.096	0.162	14.456243	-28.218698	1147.05	-445.67
1	GUIDE	842015552	10.16	4836	0.139	-0.160	0.156	0.254	14.109474	-28.656091	2331.69	-1956.60
2	GUIDE	842008736	10.37	4843	-0.089	0.149	0.175	0.281	14.870220	-27.799337	94.26	1257.47
3	FID	ACIS-S-2	7.11	2418	-0.010	0.002	0.007	0.012	0.000000	0.000000	-755.34	-1728.25
4	FID	ACIS-S-4	7.20	2418	-0.024	0.005	0.006	0.012	0.000000	0.000000	2157.68	179.68
5	FID	ACIS-S-5	7.23	2417	0.004	0.002	0.007	0.012	0.000000	0.000000	-1807.47	173.97
6	GUIDE	842017400	8.69	4842	-0.023	0.115	0.068	0.112	14.466062	-28.061705	615.94	-249.23
7	GUIDE	842015088	9.30	4839	-0.112	-0.118	0.082	0.133	13.933025	-27.893682	-457.53	-1693.88

2.4 Star Slots

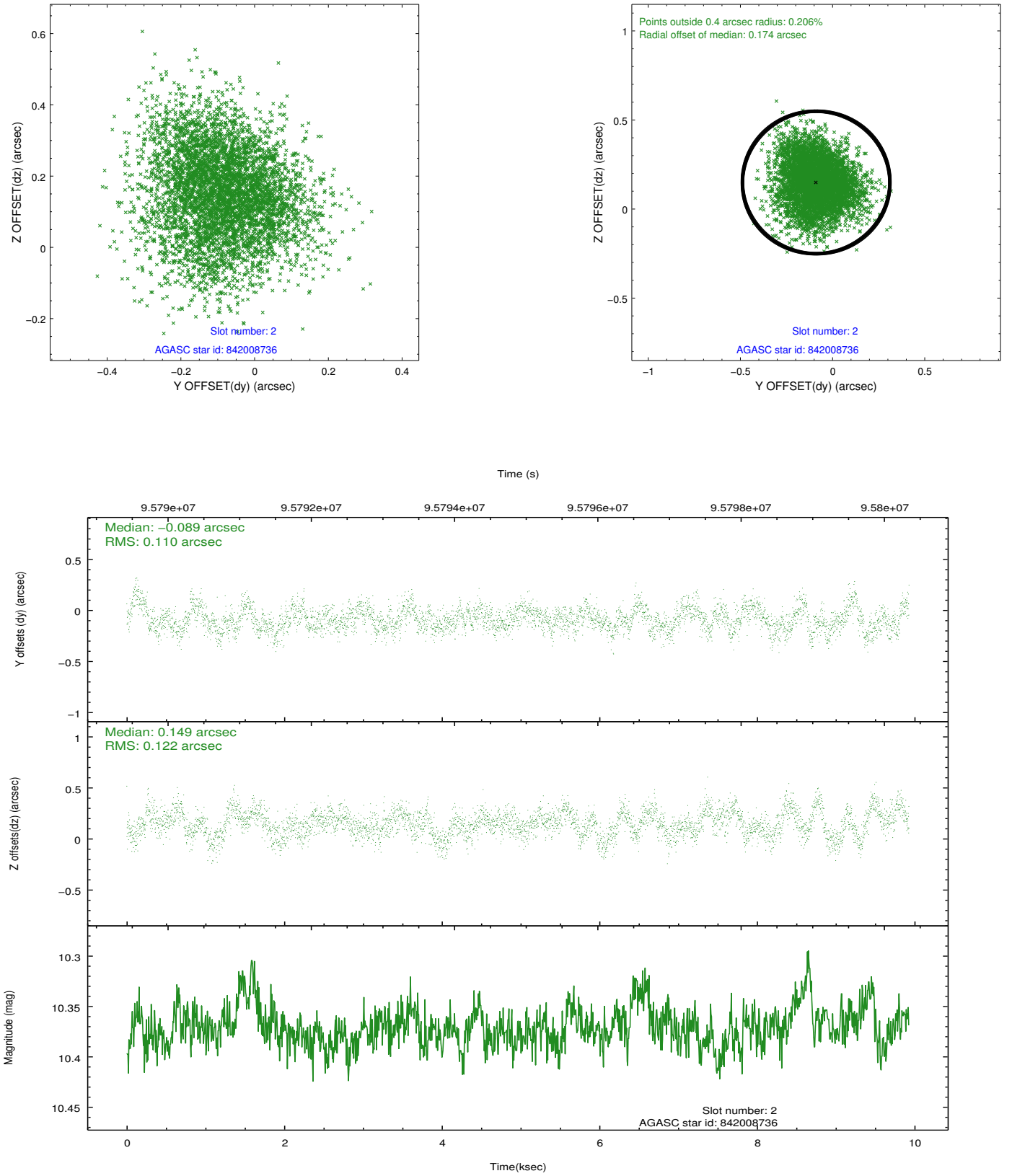
2.4.1 Slot 0



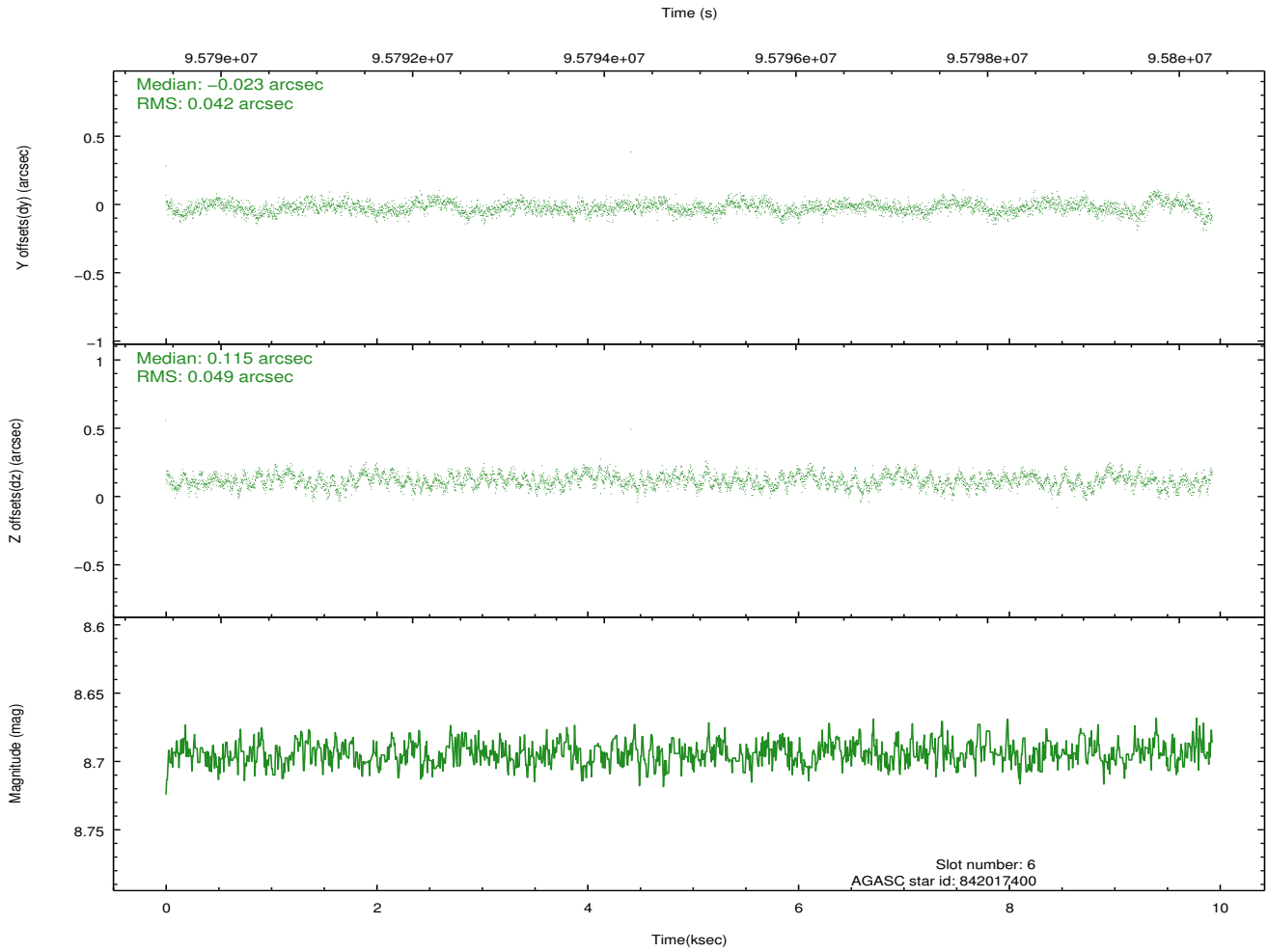
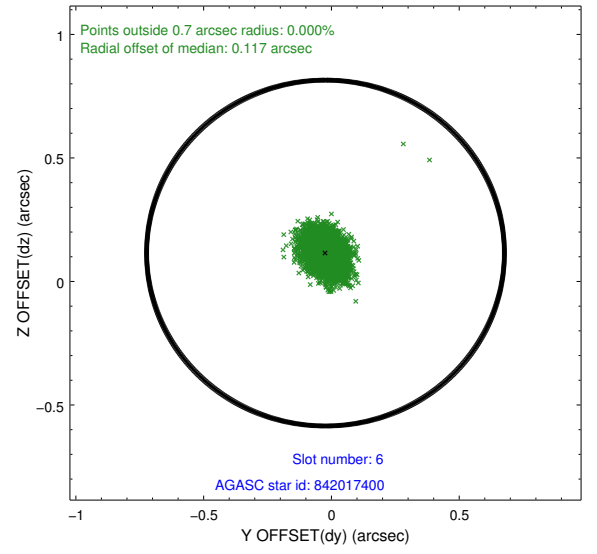
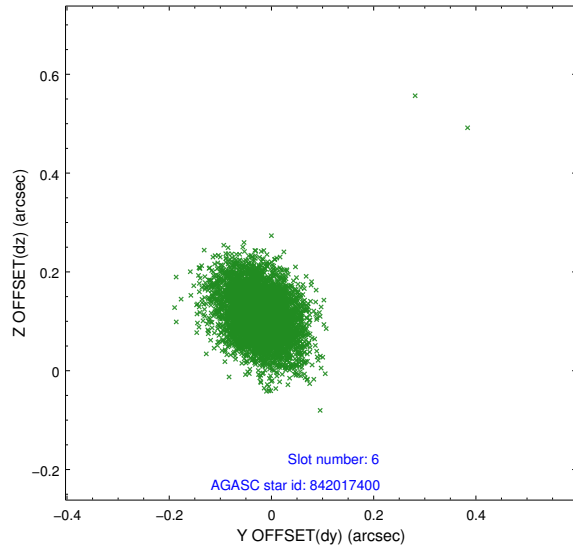
2.4.2 Slot 1



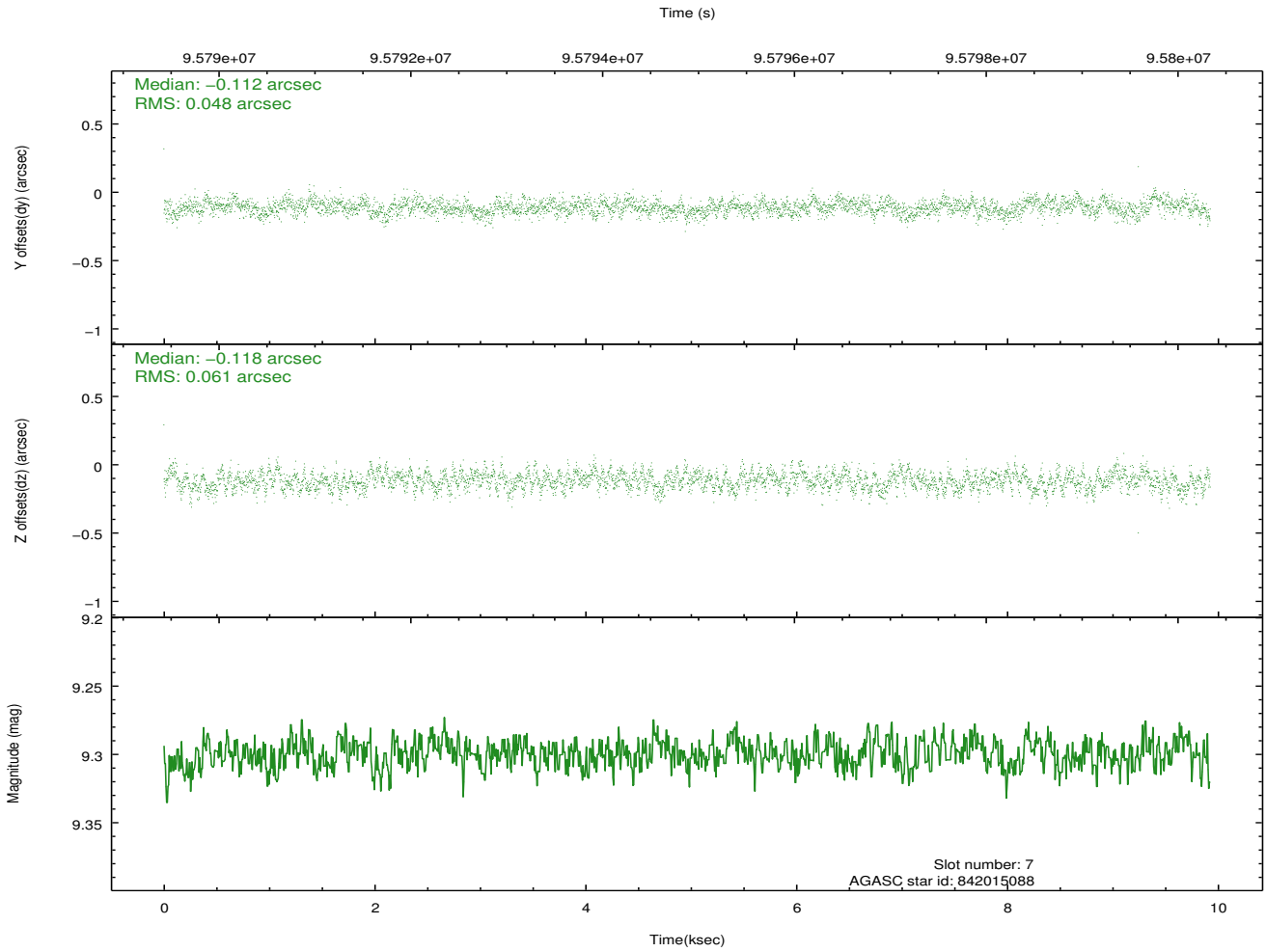
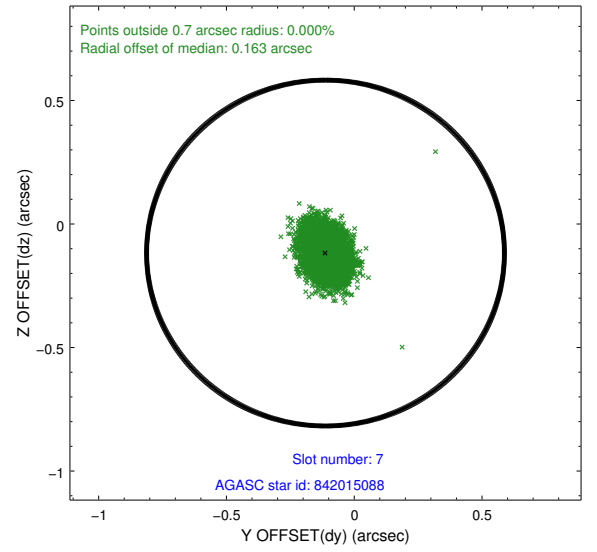
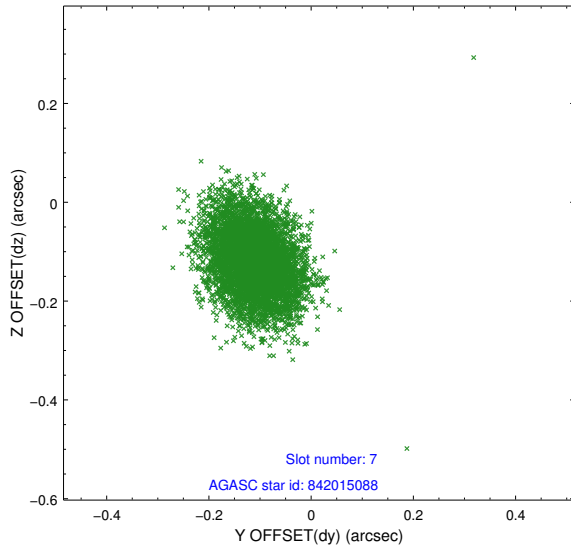
2.4.3 Slot 2



2.4.4 Slot 6

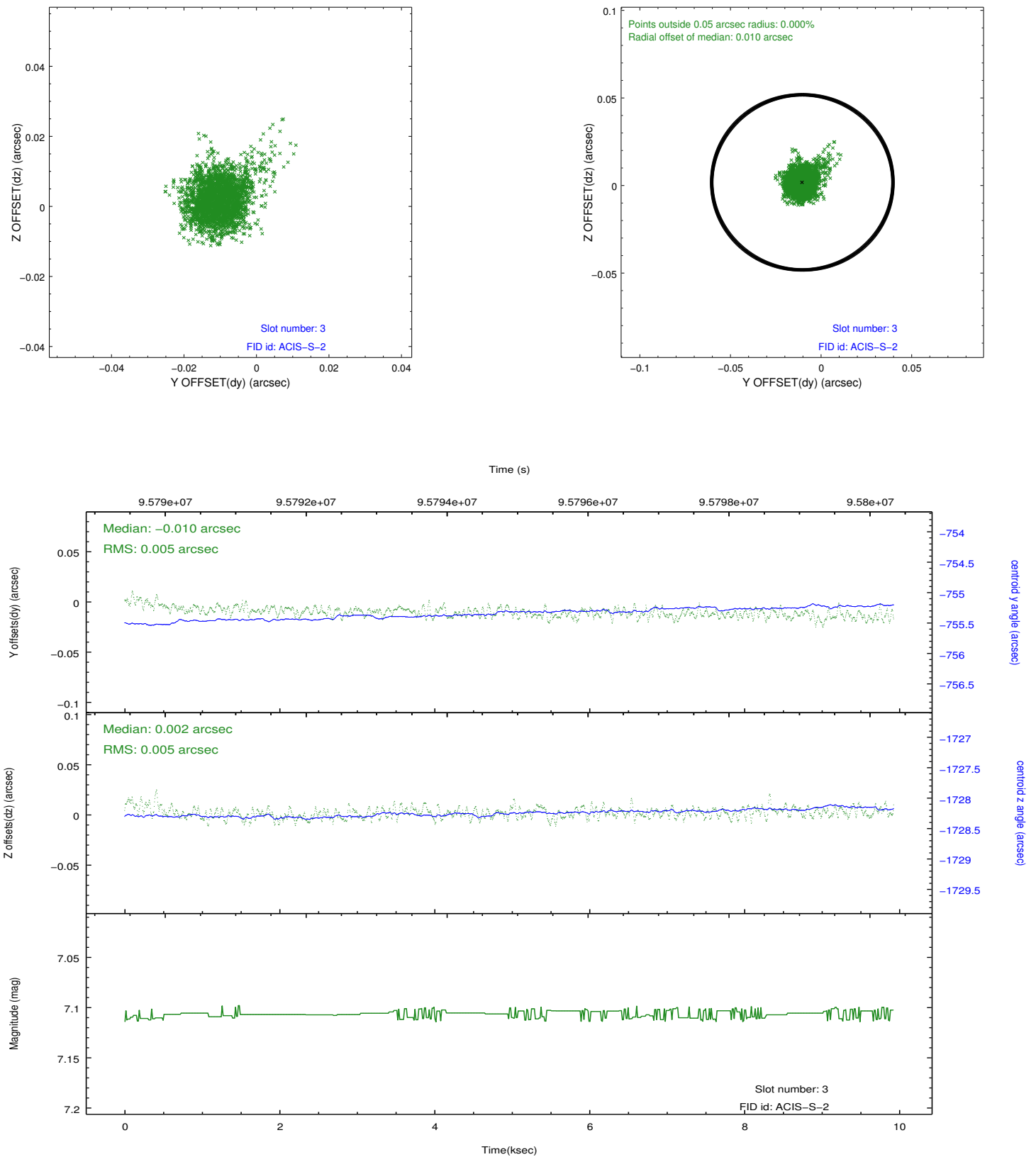


2.4.5 Slot 7

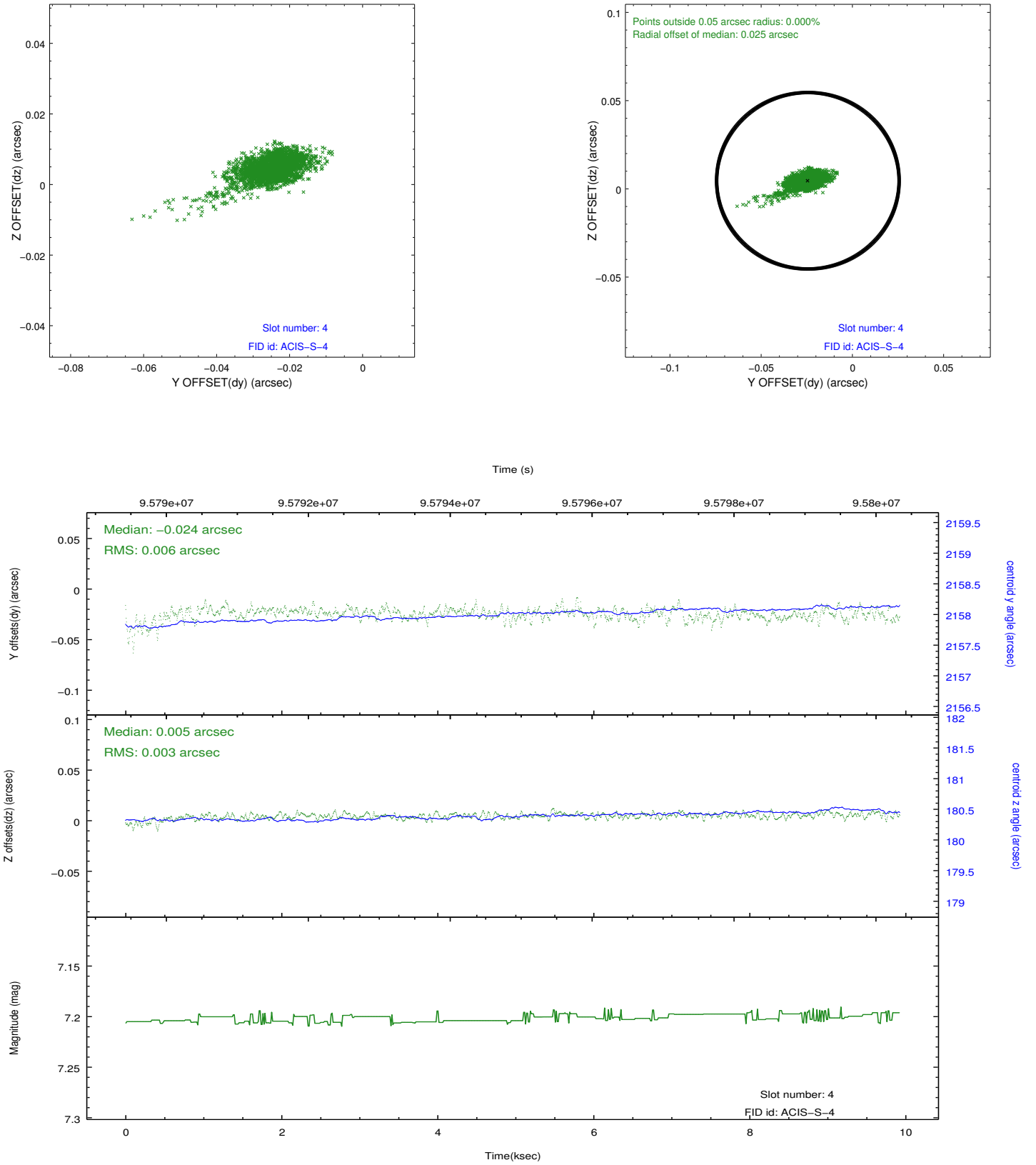


2.5 FID Slots

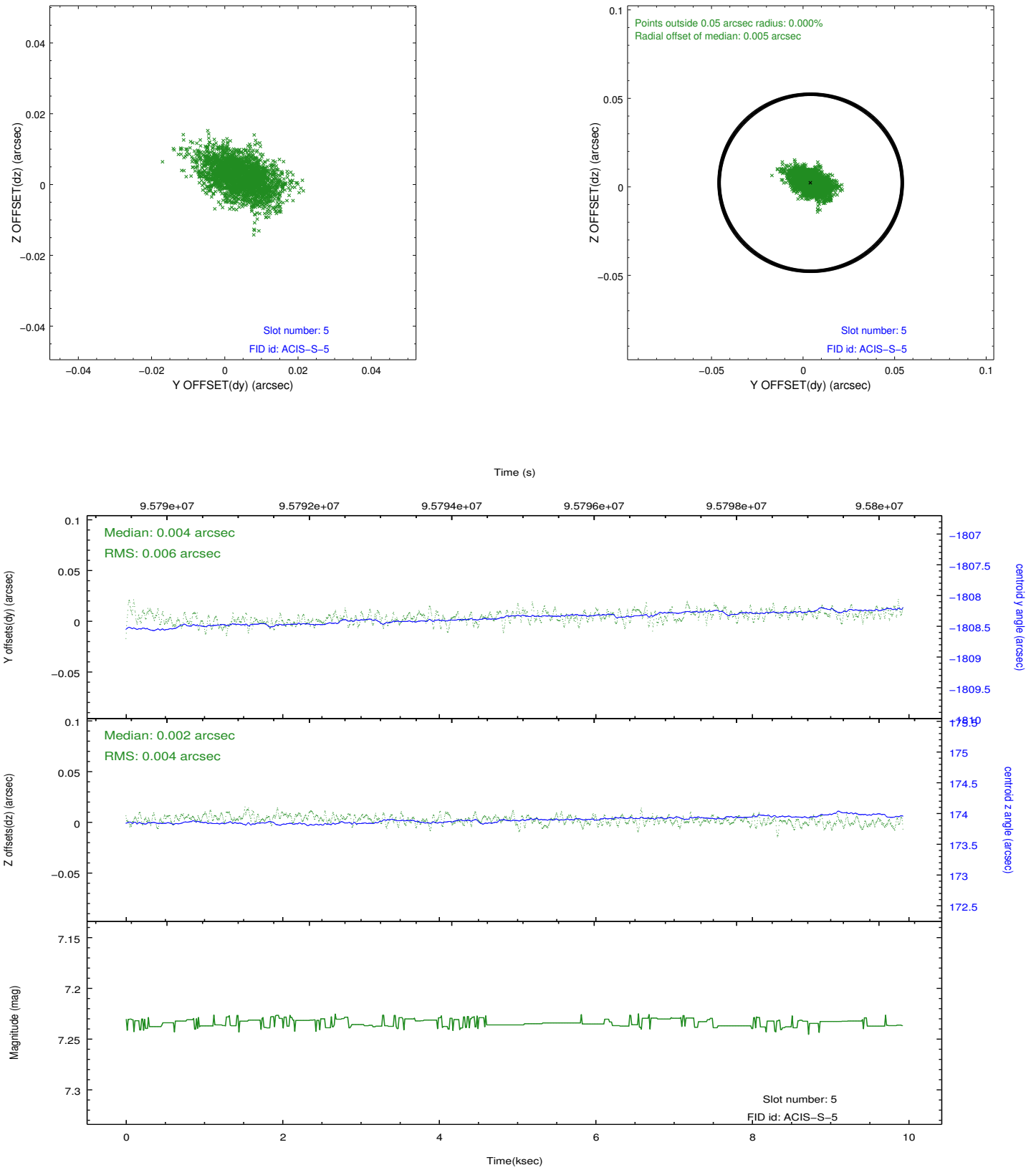
2.5.1 Slot 3



2.5.2 Slot 4



2.5.3 Slot 5



A Summary

A.1 Status

V&V Scientist	Jen Lauer
V&V Date (YYYY-MM-DD)	2012.09.17
V&V Edition	1
V&V Disposition and Status	OK
V&V Charge Time	9.455

A.2 Comments