

V&V Reference Report

L2 ASCDS Version : 8.4.5

Observation 2166 - L2 Version 3
Chandra X-Ray Center

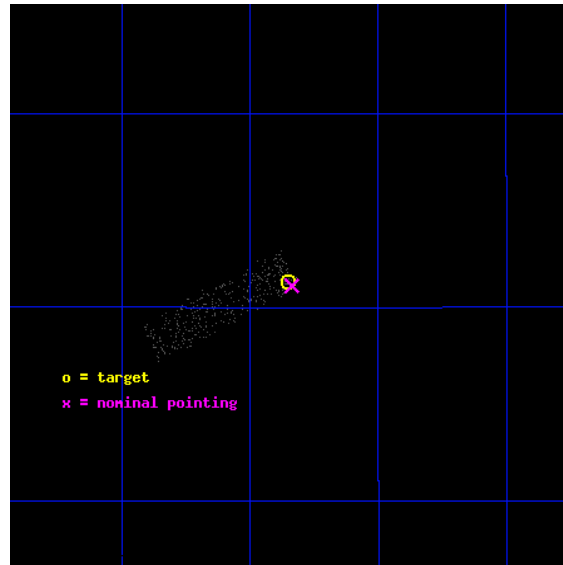
L2 Processing Date : Sep 20 2012

Contents

1	Front	2
2	OBI	3
2.1	OBI	3
2.1.1	Images	3
2.1.2	Bias	3
2.1.3	Parameters	4
2.1.4	Events	4
2.2	Compared Parameters	5
2.3	Aspect	6
2.4	Star Slots	9
2.4.1	Slot 3	9
2.4.2	Slot 4	10
2.4.3	Slot 5	11
2.4.4	Slot 6	12
2.4.5	Slot 7	13
2.5	FID Slots	14
2.5.1	Slot 0	14
2.5.2	Slot 1	15
2.5.3	Slot 2	16
A	Summary	17
A.1	Status	17
A.2	Comments	17

1 Front

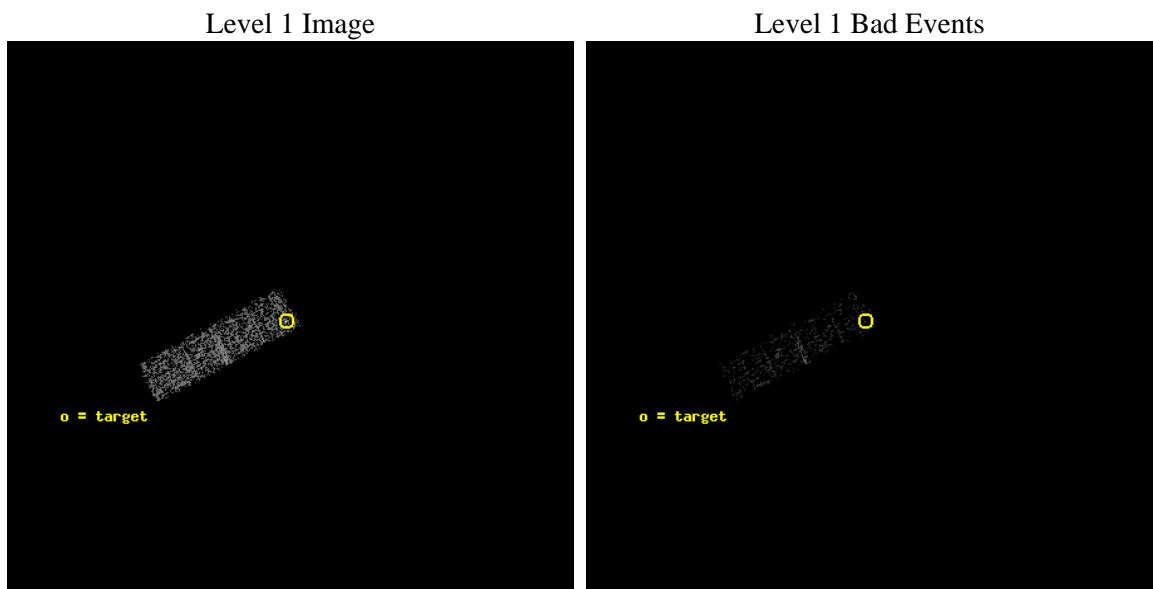
seq_num	700356	Sequence number
obs_id	2166	Observation id
title	RED QUASARS AND THE X-RAY BACKGROUND	Proposal title
observer	Dr. Belinda Wilkes	Principal investigator
object	2MASSJ140251+2631	Source name
dtcycle	0	
cycle	P	events from which exps? Prim/Second/Both
ra_targ	210.713333	Observer's specified target RA [deg]
dec_targ	26.521528	Observer's specified target Dec [deg]
ra_nom	210.70924869088	Nominal RA [deg]
dec_nom	26.518556568875	Nominal Dec [deg]
roll_nom	242.48071963093	Nominal Roll [deg]
revision	3	Processing version of data
ontime	1817.5999932438	Sum of GTIs [s]
livetime	1728.9070610138	Livetime [s]
ontime3	1817.5999932438	Sum of GTIs [s]
l2events	739	Number of level 2 events



2 OBI

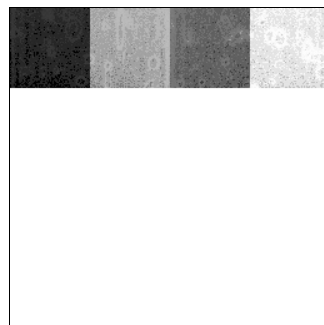
2.1 OBI

2.1.1 Images



2.1.2 Bias

Chip 3



2.1.3 Parameters

obi_num	0	Obi number	sched_exp_time	1000.000000	[s] Scheduled observation exposure time
ascdsver	8.4.5	Processing system revision	ontime	1817.5999932438	Sum of GTIs [s]
caldsver	4.5.1.1	 	ontime3	1817.5999932438	Sum of GTIs [s]
date	2012-09-20T11:35:04	Date and time of file creation	l1events	4654	Number of level 1 events
revision	3	Processing version of data			

2.1.4 Events

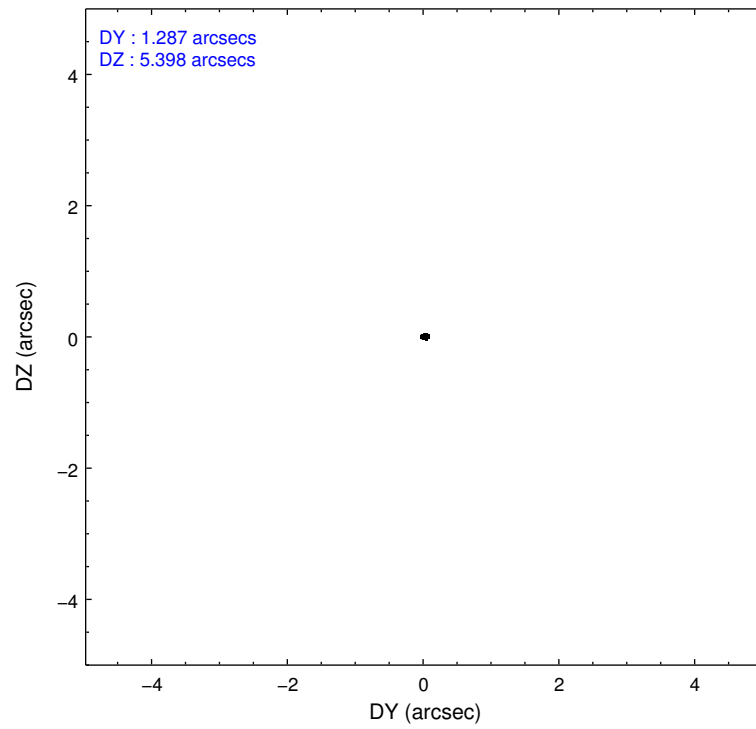
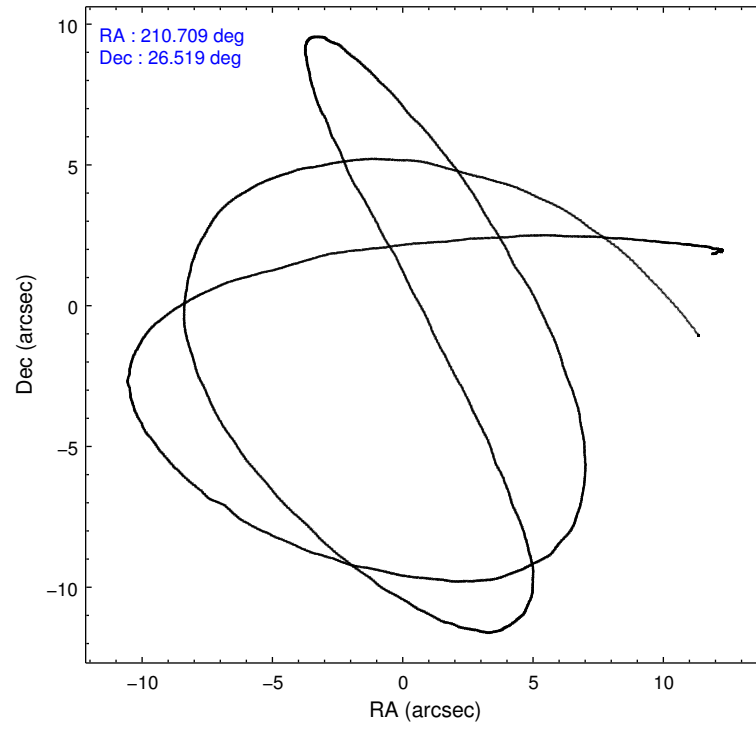
	ccd 3
level 1 events	4654
rejected events	3829
rejected %	82%

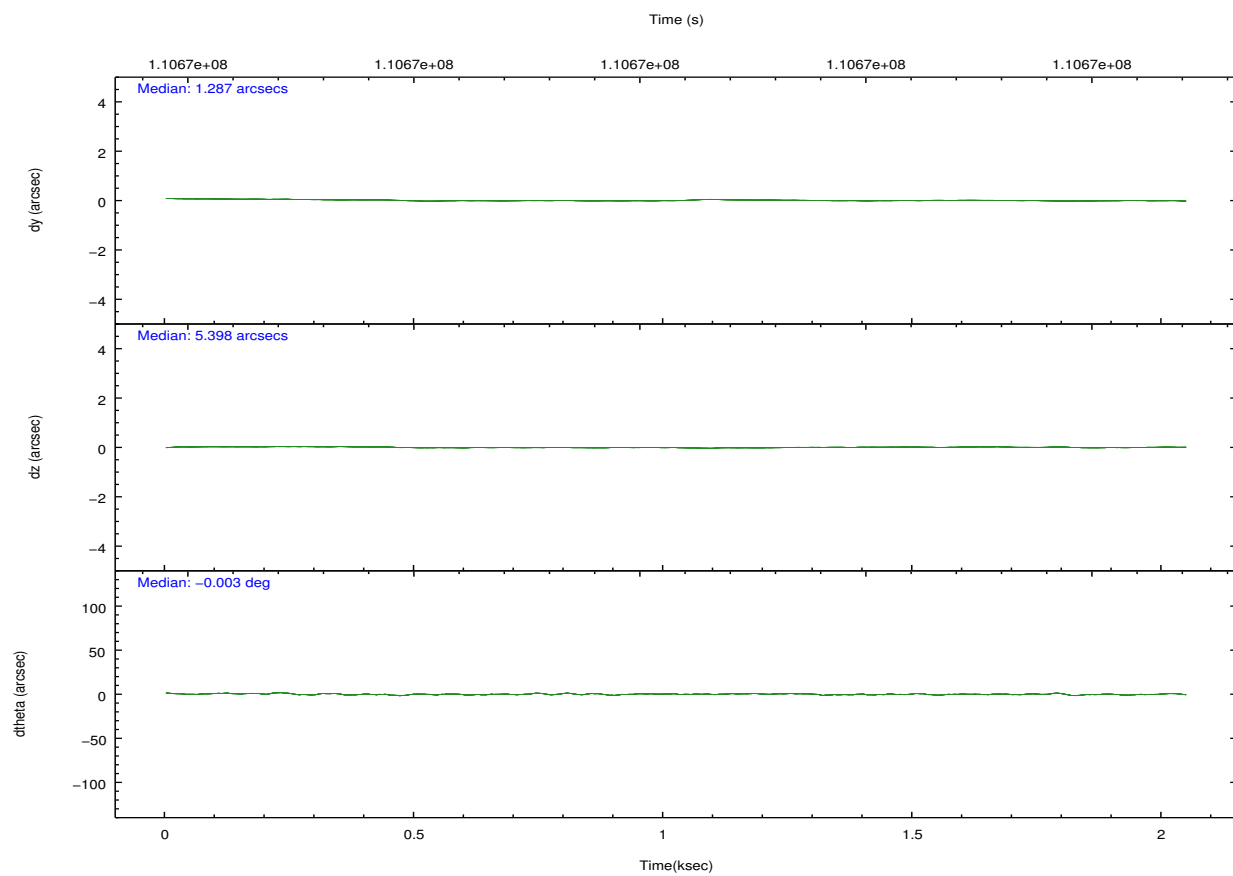
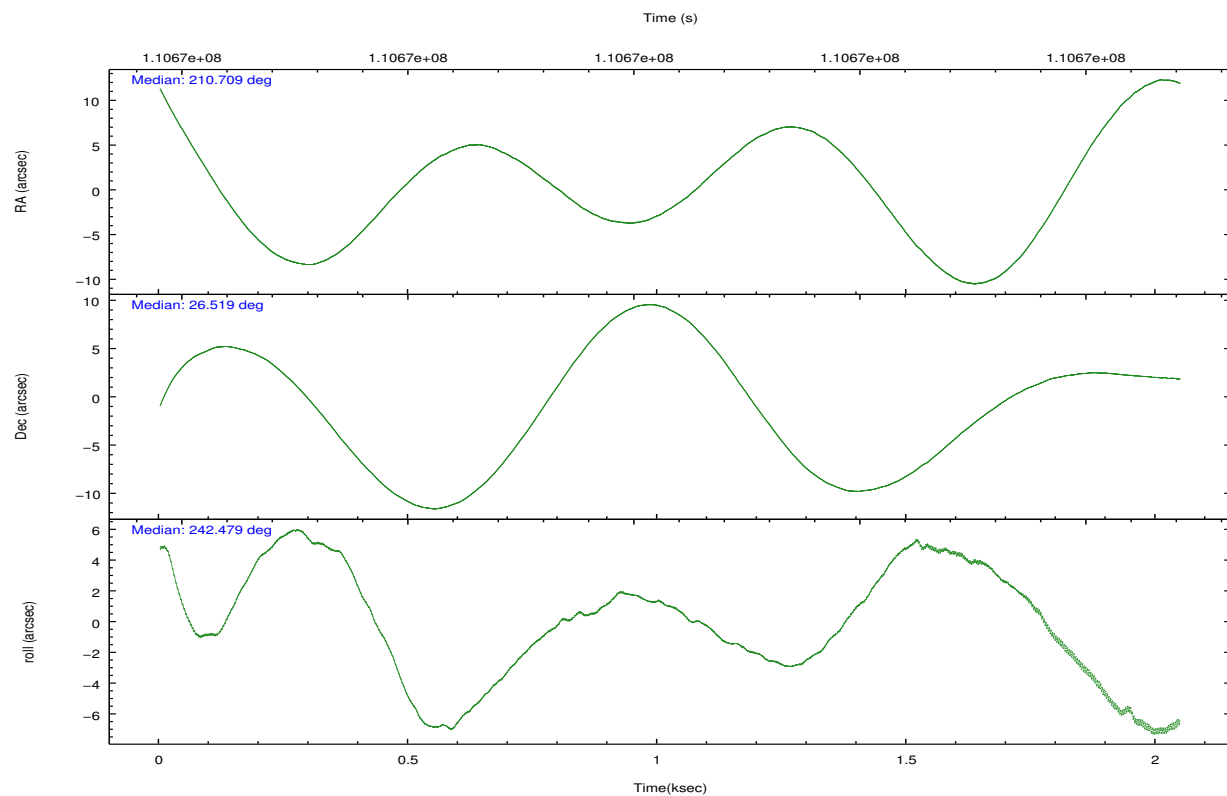
	ccd 3
grade 0 events	463
	9%
grade 1 events	7
	0%
grade 2 events	110
	2%
grade 3 events	91
	1%
grade 4 events	79
	1%
grade 5 events	137
	2%
grade 6 events	82
	1%
grade 7 events	3685
	79%

2.2 Compared Parameters

Parameter	Planned	Actual	Parameter	Planned	Actual
Instrument	ACIS	ACIS	Obspar format version number	7	7
Detector	ACIS-3	ACIS-3	Obspar file type	PREDICTED	ACTUAL
Grating	NONE	NONE	Obspar update status	NONE	UPDATED
Data mode	VFAINT	VFAINT	Number of optional ACIS chips dropped	0	0
Observation mode	POINTING	POINTING	On-chip summing requested	N	N
[deg] Pointing RA	210.707886	210.7092486908847	Subarray requested	CUSTOM	1/4
[deg] Pointing Dec	26.545936	26.5185565688751	Subarray start row	769	769
[deg] Pointing Roll	242.272586	242.4807196309264	Subarray row count	256	256
[mm] SIM focus pos	-0.782348	-0.7809083437167272	Alternating exposures requested	N	N
[mm] SIM defocus	0	0.001439871863259334	[s] Primary exposure time	0.000000	0.8
[mm] SIM translation stage pos	-233.592463	-233.5874344608287			
[mm] SIM translation stage offset	0	-0.005018542100998502			
[s] Observation start time (MET)	110672106.184000	110670712.98237			
Observation start date	2001-07-04T22:14:02	2001-07-04T21:51:52			
[s] Observation end time (MET)	110673106.184000	110673761.84499			
Observation end date	2001-07-04T22:30:42	2001-07-04T22:42:41			
Read mode	TIMED	TIMED			

2.3 Aspect



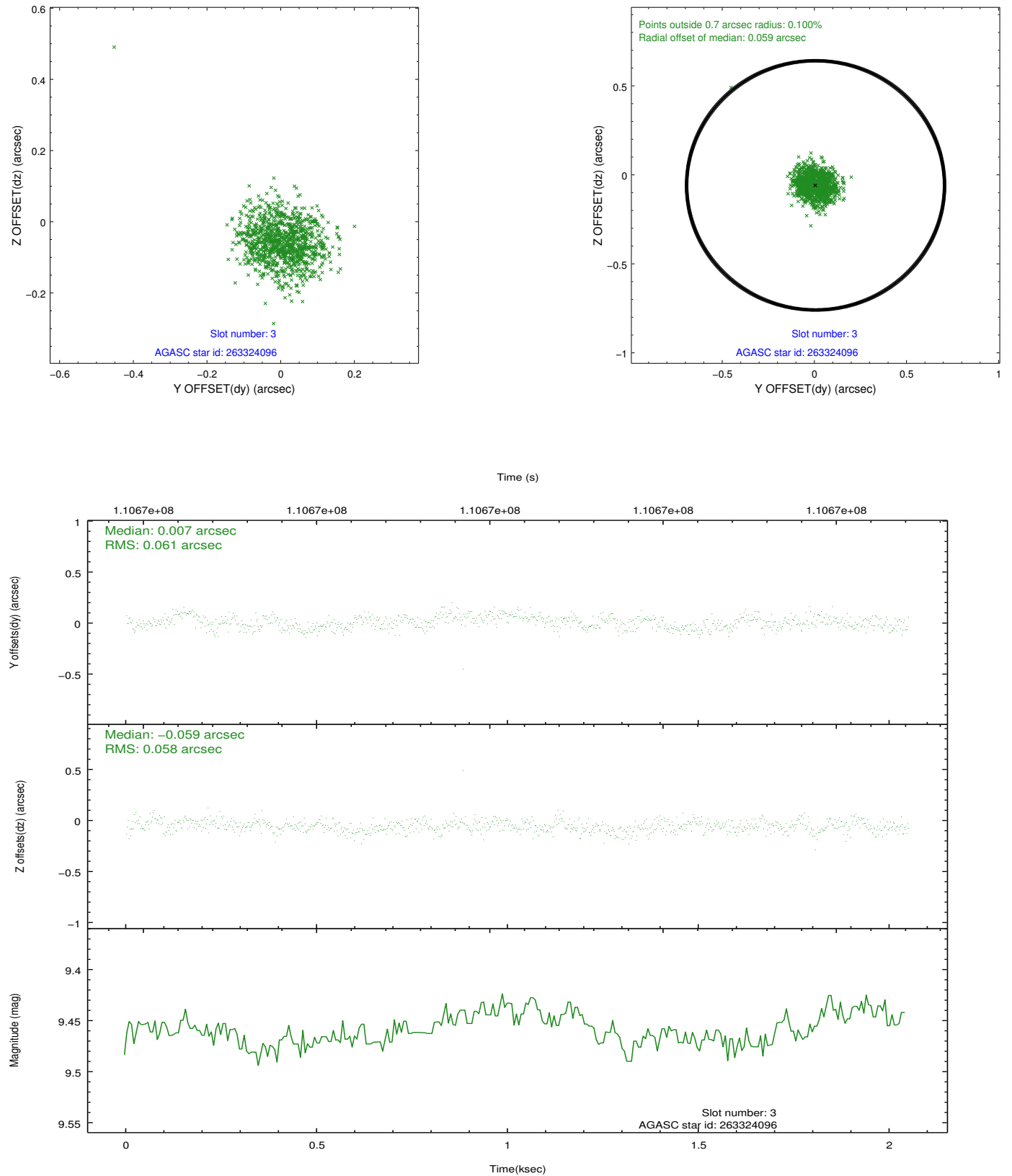


Slot Statistics

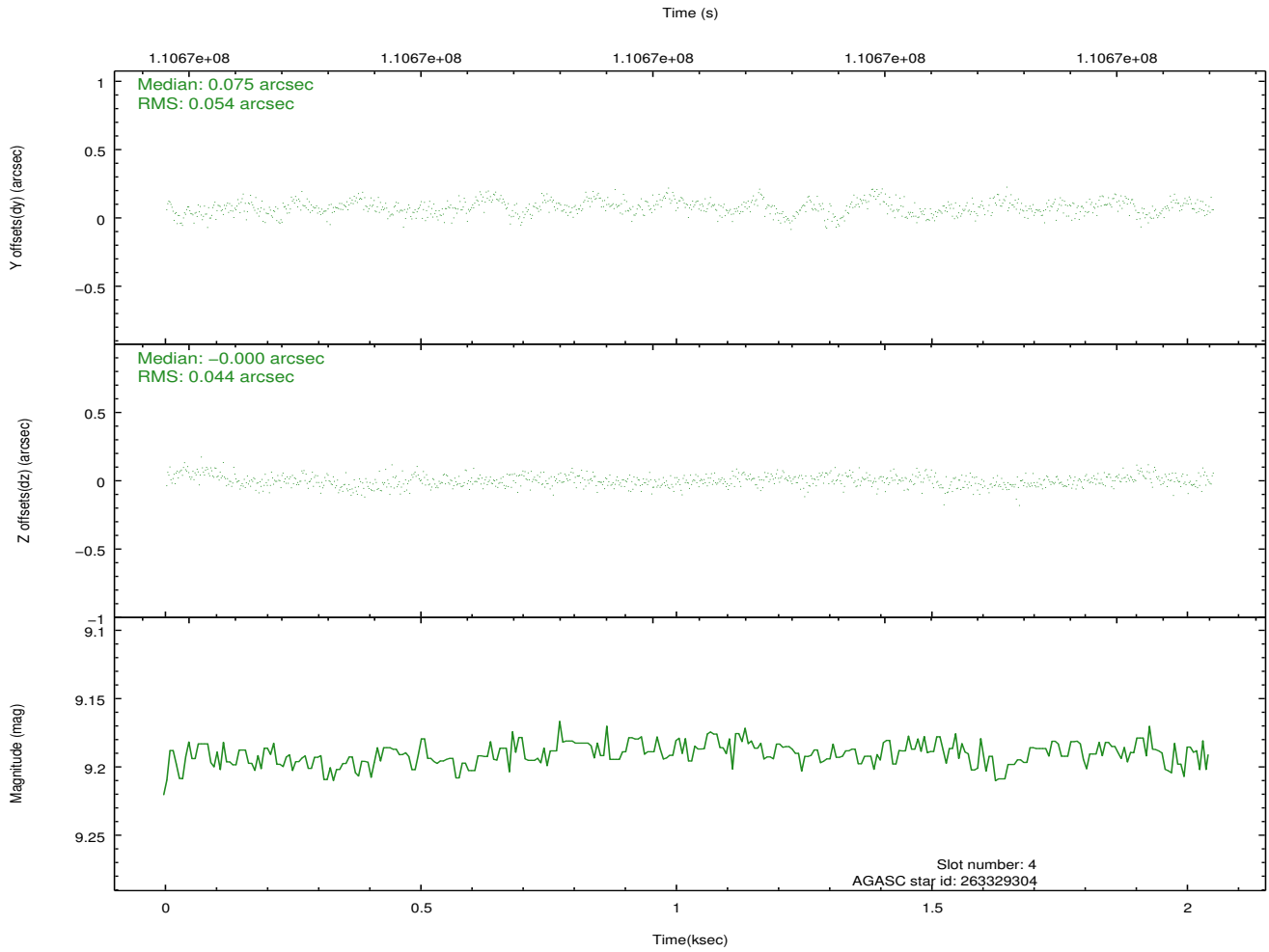
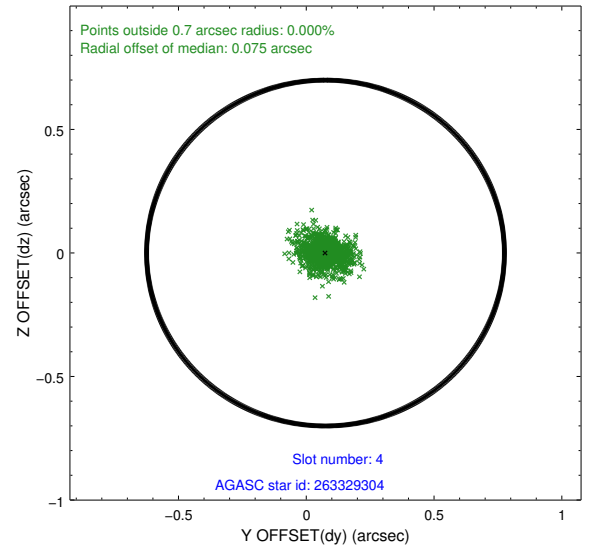
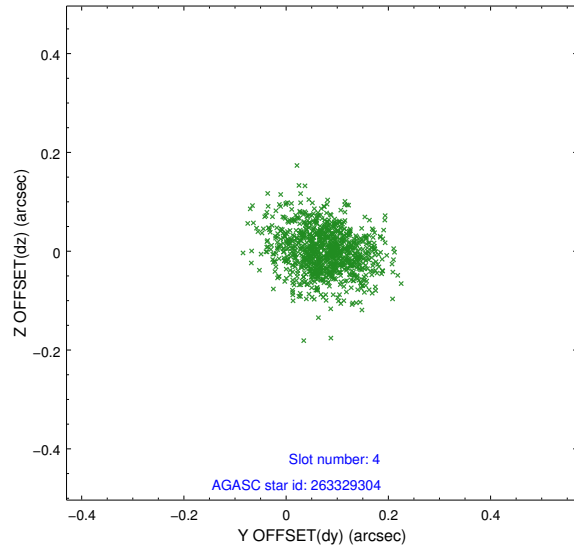
slot	status	id	mag	n_pts	med_dy	med_dz	dr1	dr2	ra	dec	mean_y	mean_z
0	FID	ACIS-I-2	7.15	497	-0.024	-0.047	0.008	0.016	0.000000	0.000000	-755.65	-835.17
1	FID	ACIS-I-4	7.19	499	-0.034	0.035	0.005	0.009	0.000000	0.000000	2156.94	1069.52
2	FID	ACIS-I-5	7.23	500	-0.042	0.081	0.008	0.014	0.000000	0.000000	-1805.39	1071.01
3	GUIDE	263324096	9.46	1000	0.007	-0.059	0.088	0.136	210.641256	26.815275	-759.01	-639.99
4	GUIDE	263329304	9.19	998	0.075	-0.000	0.073	0.122	210.804717	26.040607	1463.52	1123.73
5	GUIDE	263327816	9.17	999	-0.089	0.038	0.121	0.187	211.449707	26.888371	-2204.53	1533.45
6	GUIDE	263324512	10.20	999	0.052	0.042	0.179	0.311	211.113892	26.601672	-789.98	1064.78
7	GUIDE	263323696	10.12	999	-0.047	-0.032	0.143	0.243	211.076254	26.914243	-1726.47	430.79

2.4 Star Slots

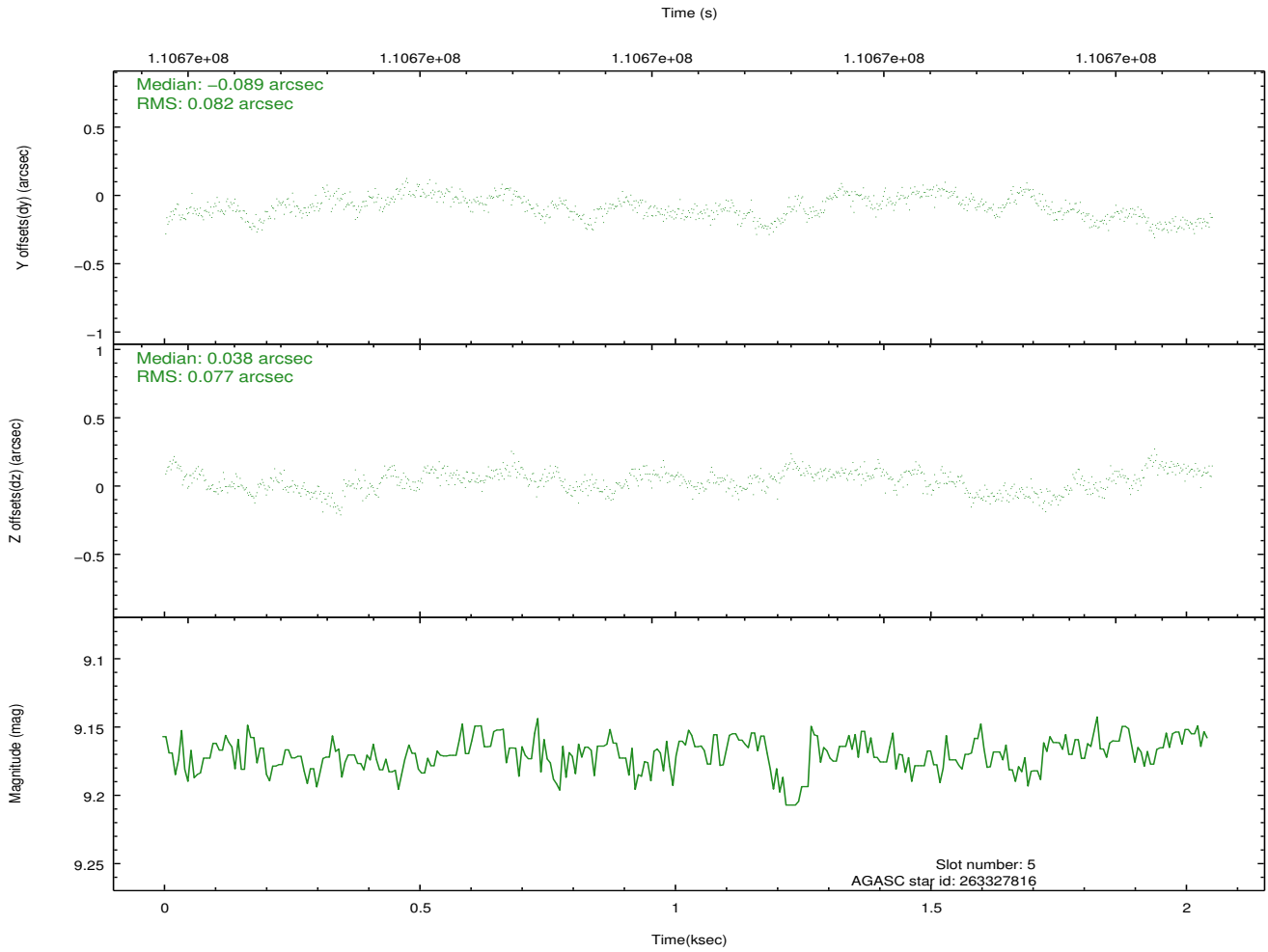
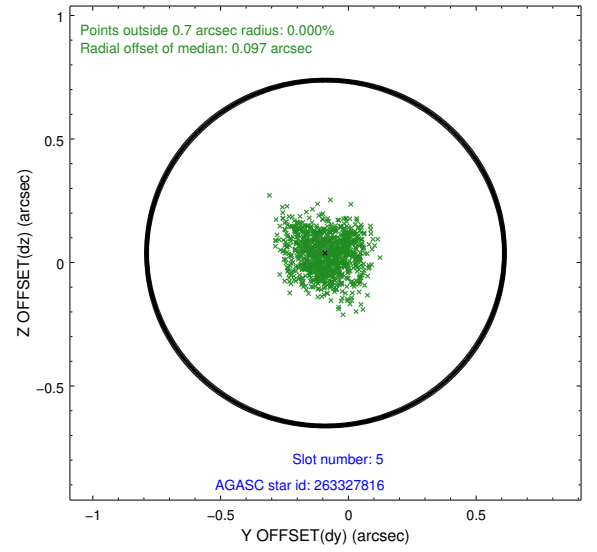
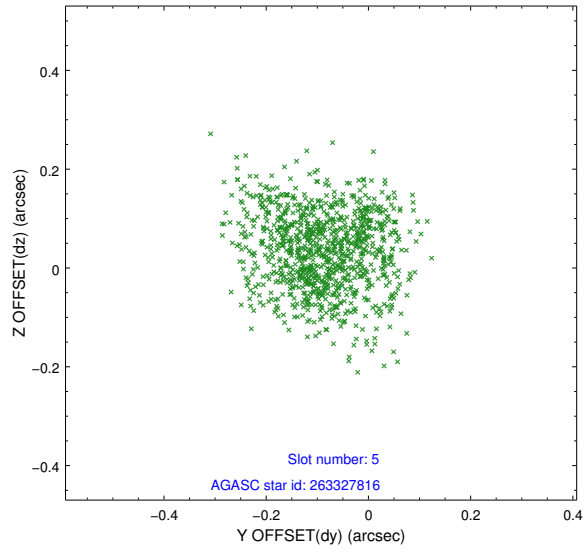
2.4.1 Slot 3



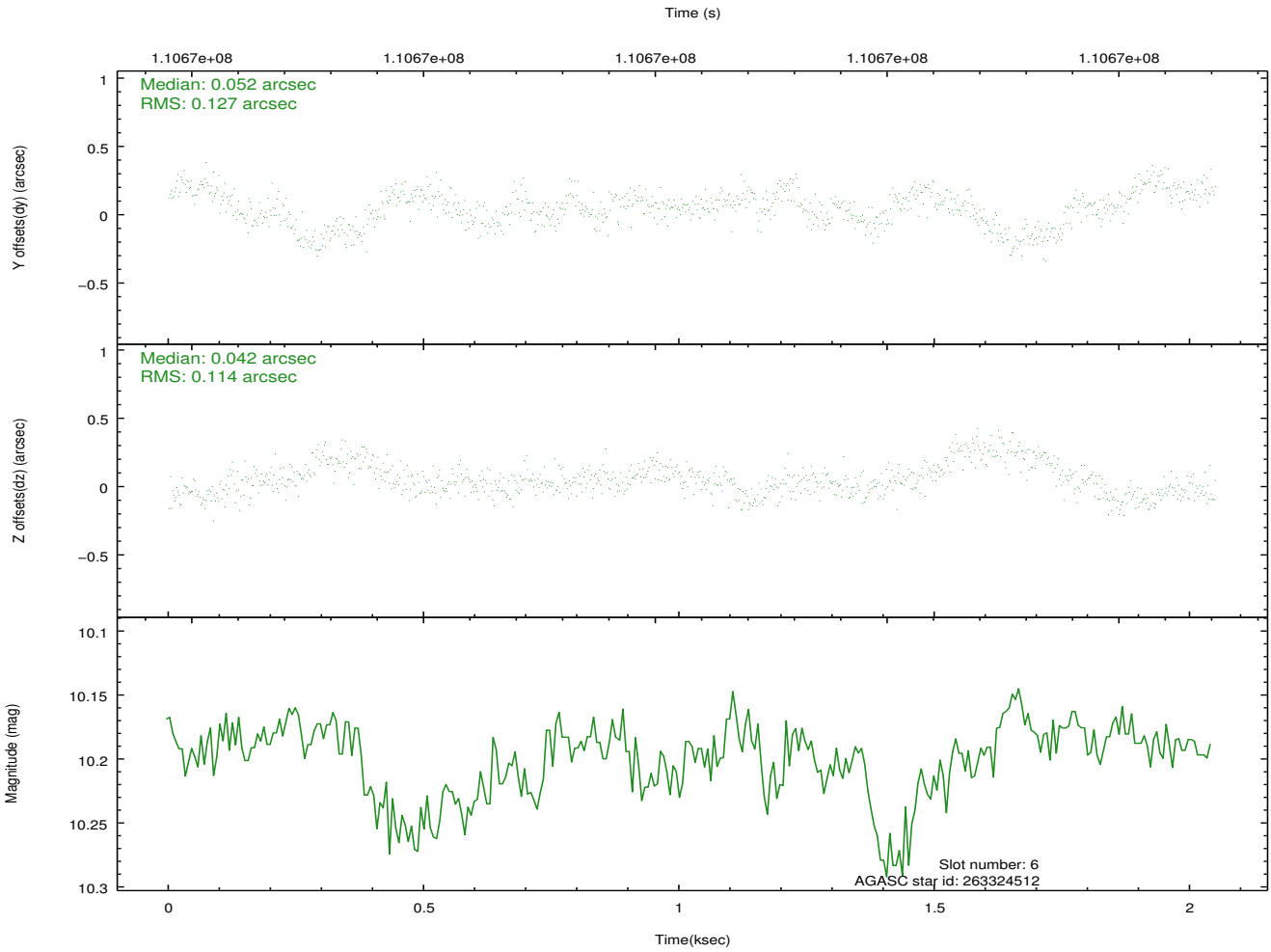
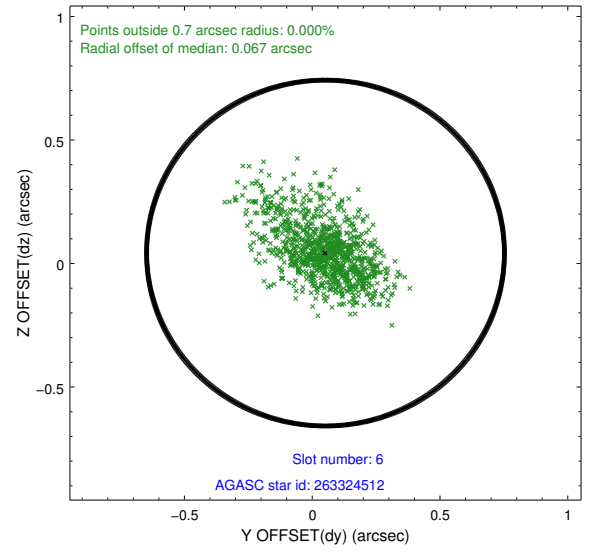
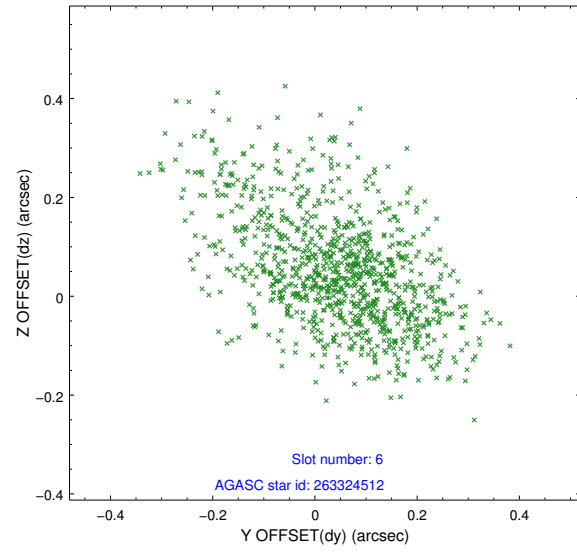
2.4.2 Slot 4



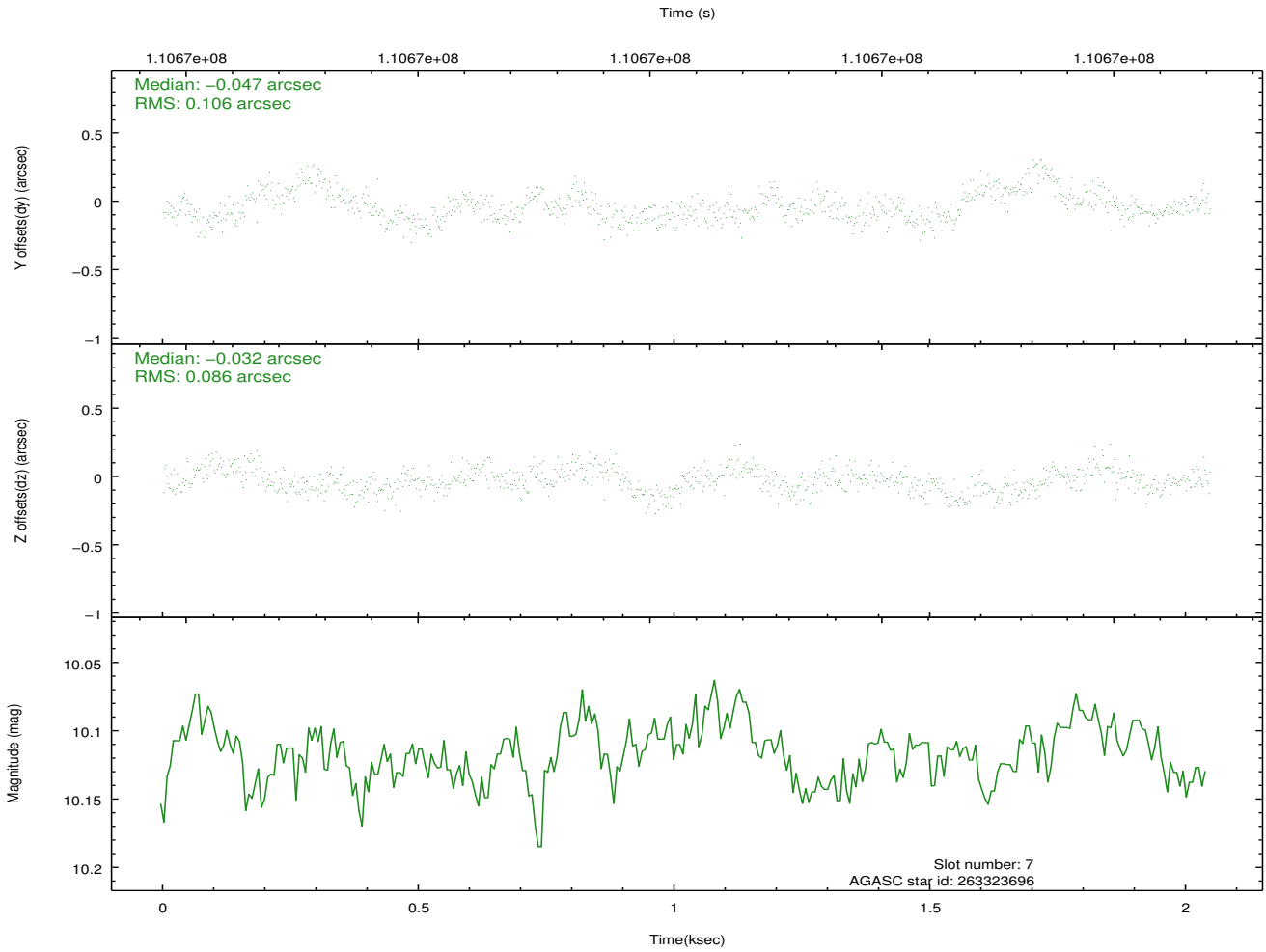
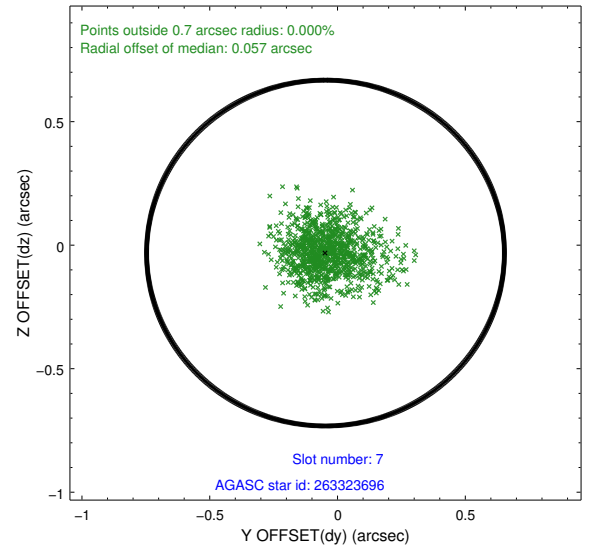
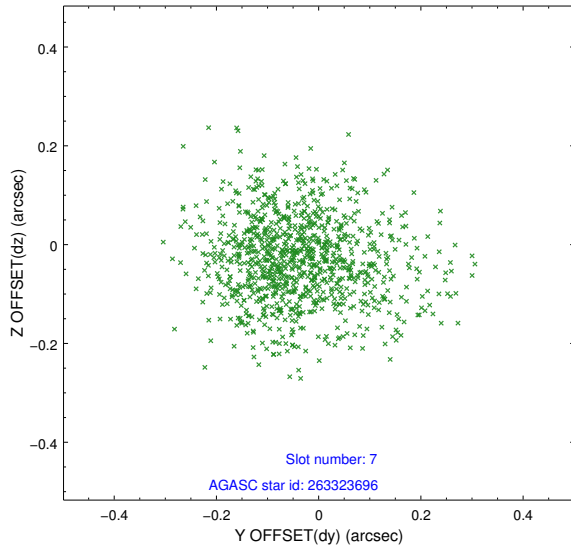
2.4.3 Slot 5



2.4.4 Slot 6

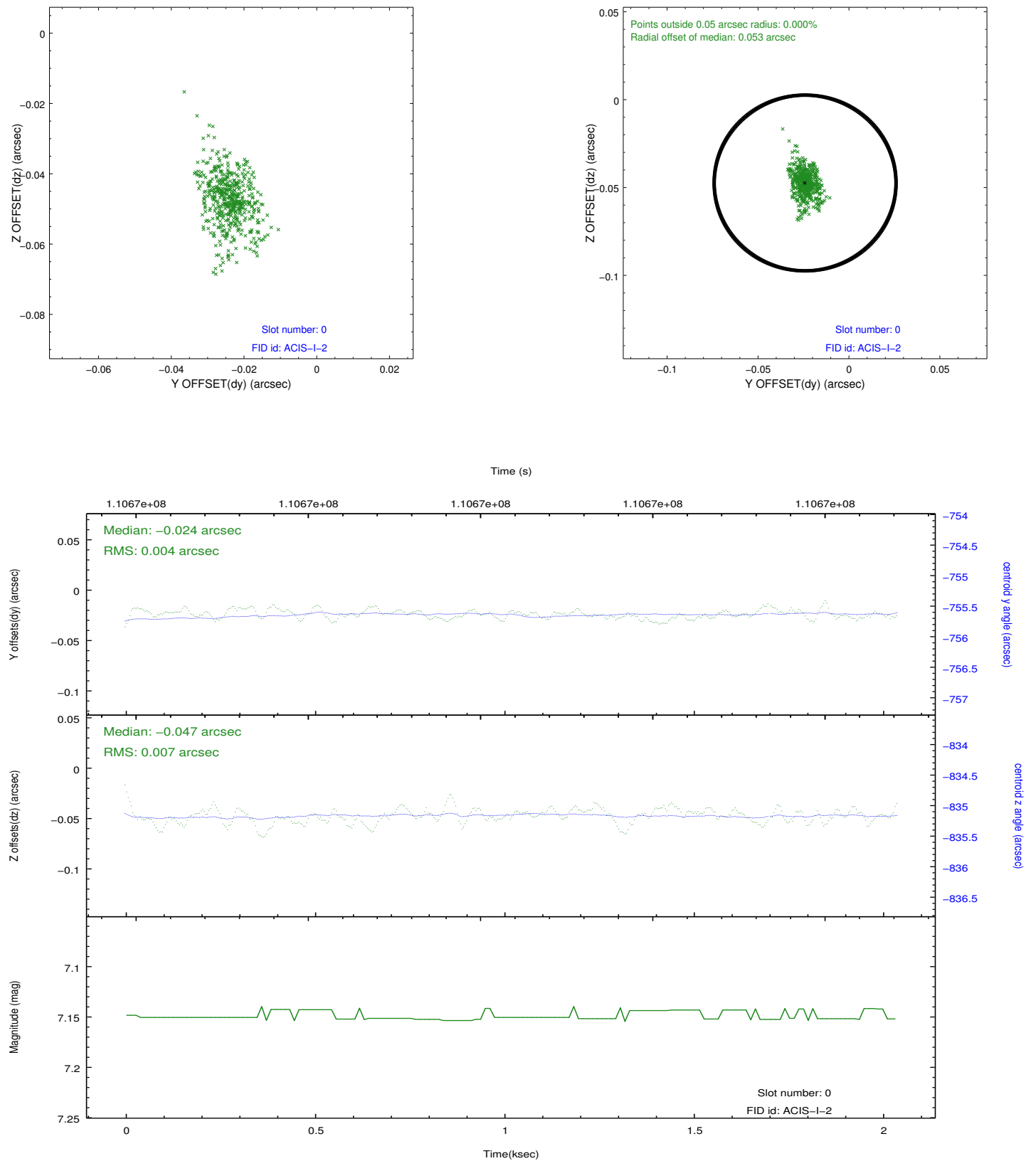


2.4.5 Slot 7

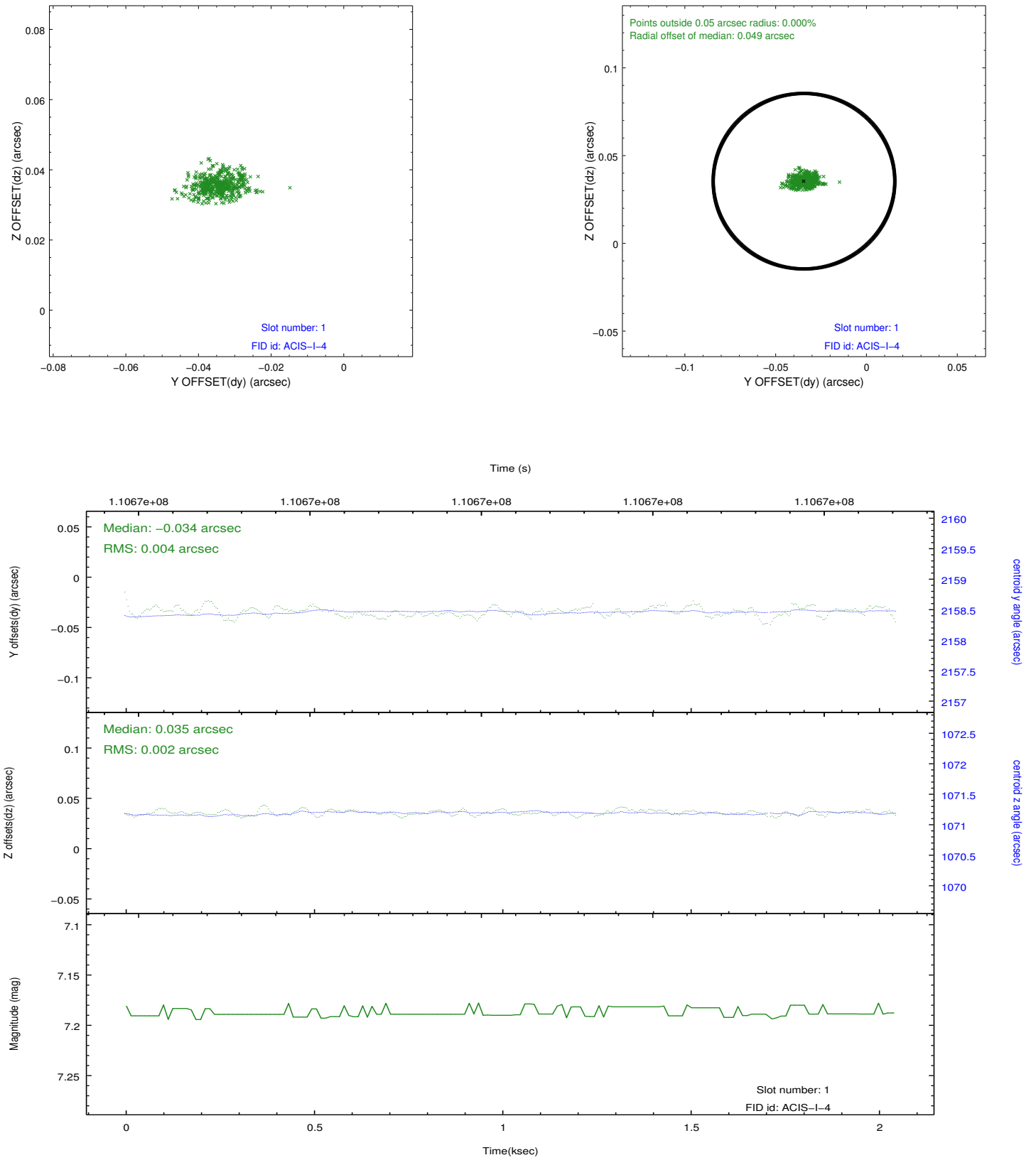


2.5 FID Slots

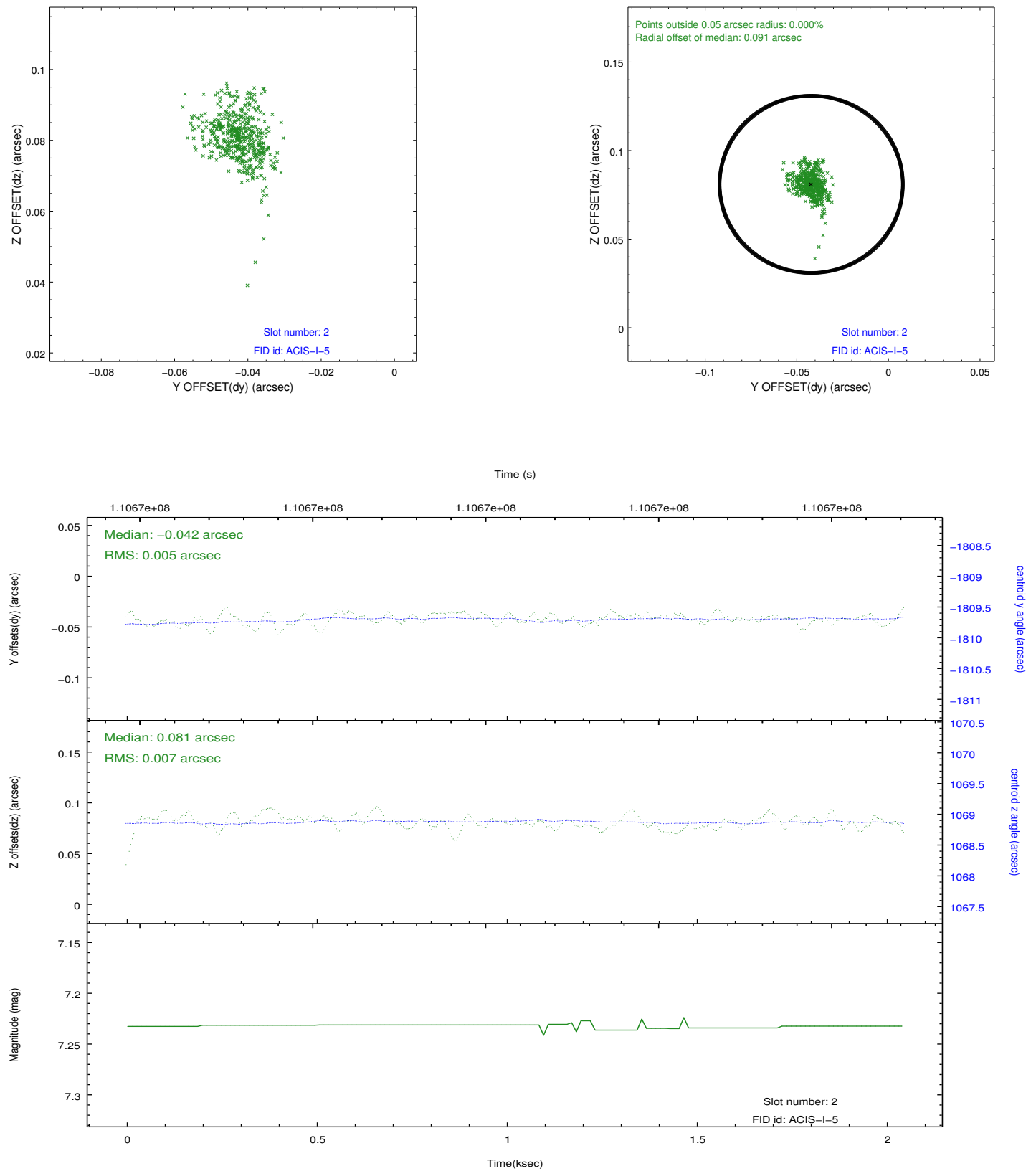
2.5.1 Slot 0



2.5.2 Slot 1



2.5.3 Slot 2



A Summary

A.1 Status

V&V Scientist	Jen Lauer
V&V Date (YYYY-MM-DD)	2012.09.21
V&V Edition	1
V&V Disposition and Status	OK
V&V Charge Time	1.8

A.2 Comments

Charge time for this ObsId remains at previous value of 1.8 ks although with the current processing the charge time would have been 1.82 ksec.