

V&V Reference Report

L2 ASCDS Version : 7.6.9

Observation 2016 - L2 Version 001
Chandra X-Ray Center

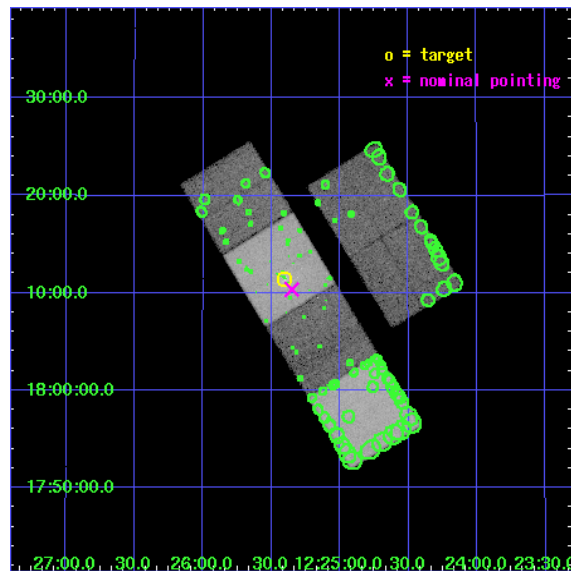
L2 Processing Date : Nov 23 2006

Contents

1	Front	2
2	OBI	3
2.1	OBI	3
2.1.1	Images	3
2.1.2	Bias	3
2.1.3	Parameters	4
2.1.4	Events	4
2.2	Compared Parameters	5
2.3	Aspect	6
2.4	Star Slots	9
2.4.1	Slot 3	9
2.4.2	Slot 4	10
2.4.3	Slot 5	11
2.4.4	Slot 6	12
2.4.5	Slot 7	13
2.5	FID Slots	14
2.5.1	Slot 0	14
2.5.2	Slot 1	15
2.5.3	Slot 2	16
3	Point Sources	17
A	Summary	18
A.1	Status	18
A.2	Comments	18

1 Front

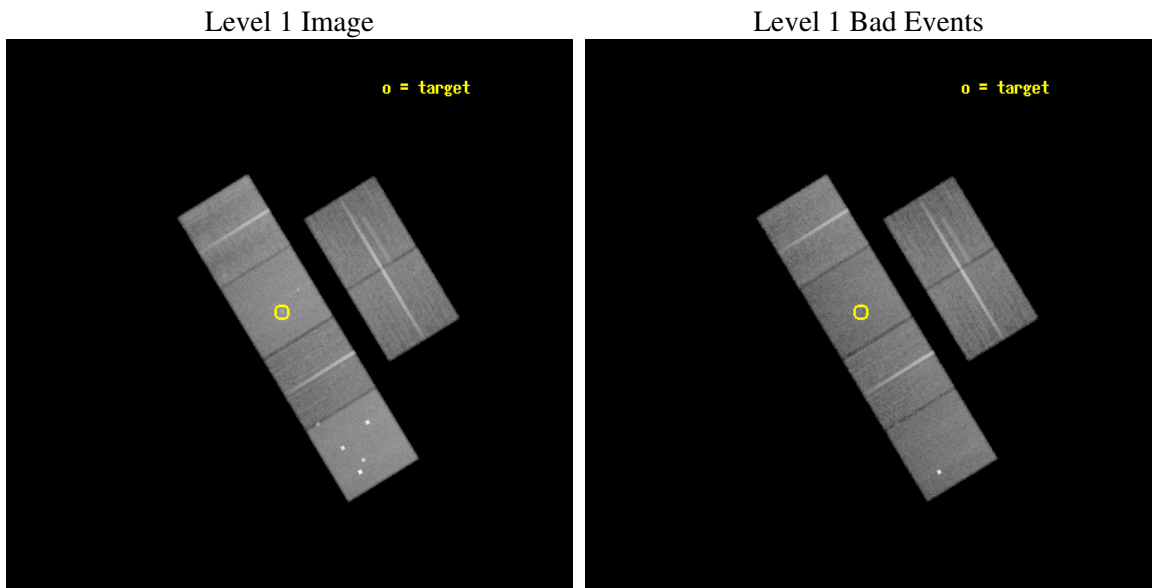
seq_num	600150
obs_id	2016
title	RESOLVING THE X-RAY BINARY POPULATION IN EARLY-TYPE GALAXIES
observer	Dr. Craig Sarazin
object	NGC4382 (M85)
dtcycle	0
cycle	P
ra_targ	186.350833
dec_targ	18.189833
ra_nom	186.33784667797
dec_nom	18.173021889106
roll_nom	238.63502452633
revision	2
ontime	40256.000037491
livetime	39746.254325763
ontime2	40252.759077236
ontime3	40249.518117011
ontime5	40256.000037491
ontime6	40256.000037491
ontime7	40256.000037491
ontime8	40252.759077251
l2events	380819



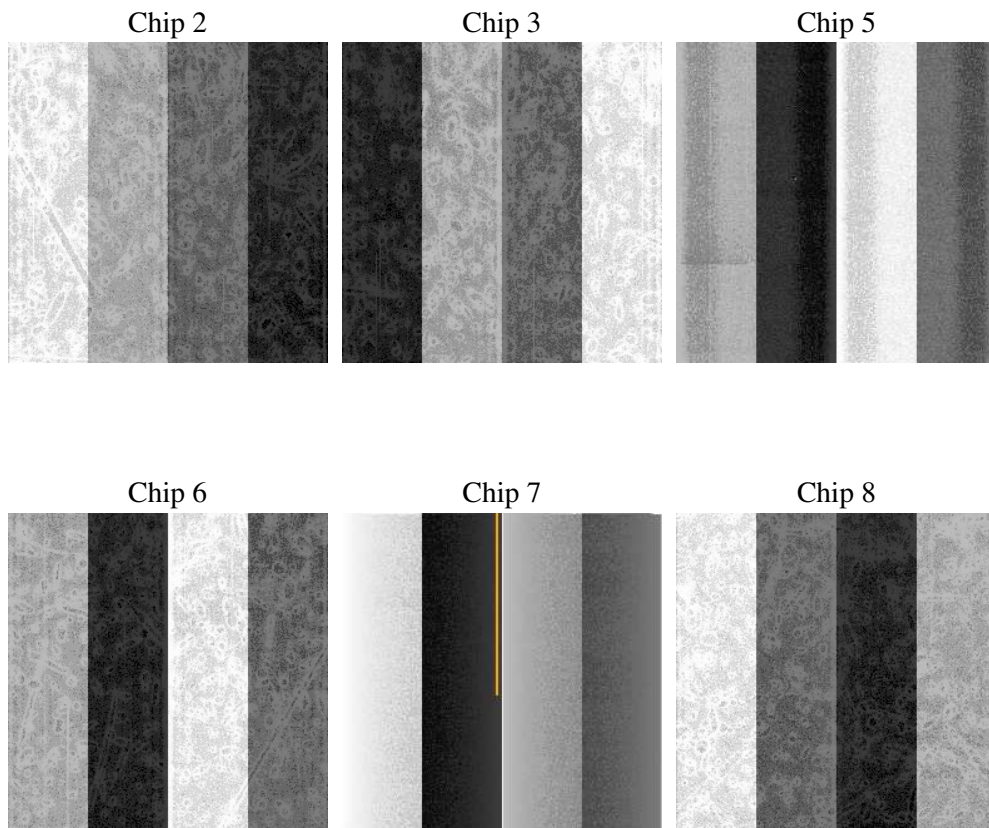
2 OBI

2.1 OBI

2.1.1 Images



2.1.2 Bias



2.1.3 Parameters

obi_num	0
ascdsver	7.6.9
caldsver	3.2.4
date	2006-11-23T06:12:54
revision	2

sched_exp_time	40500.000000
ontime	40259.688827783
ontime2	40256.447897449
ontime3	40253.206907302
ontime5	40259.688857704
ontime6	40259.688827783
ontime7	40259.688827783
ontime8	40256.447767869
l1events	1777636

2.1.4 Events

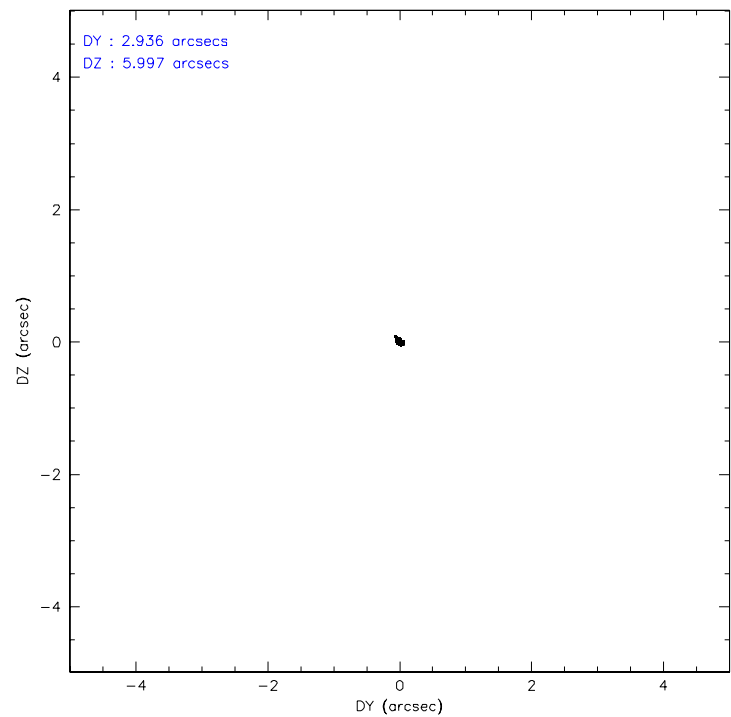
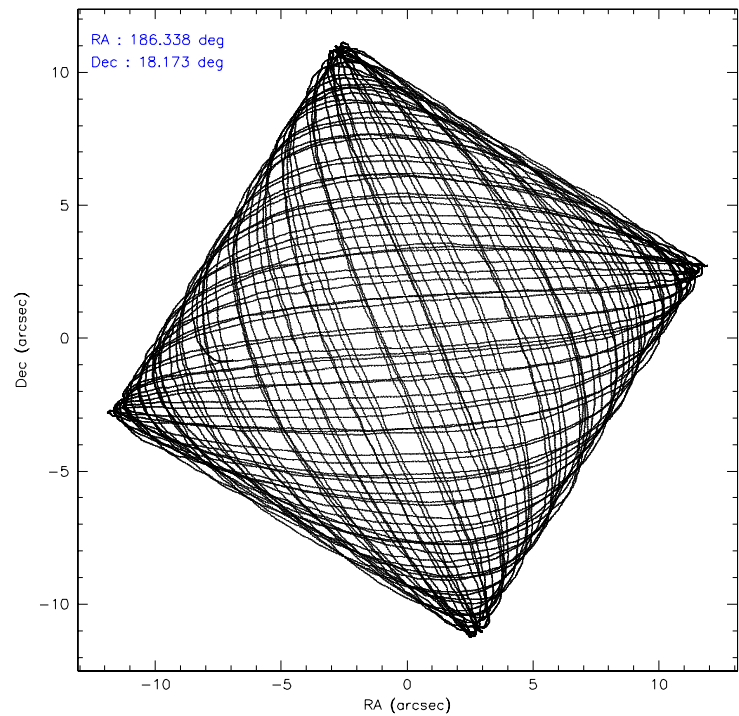
	ccd 2	ccd 3	ccd 5	ccd 6	ccd 7	ccd 8
level 1 events	255866	244352	376403	253284	330438	317293
rejected events	227319	216524	201769	223508	196578	254606
rejected %	88%	88%	53%	88%	59%	80%

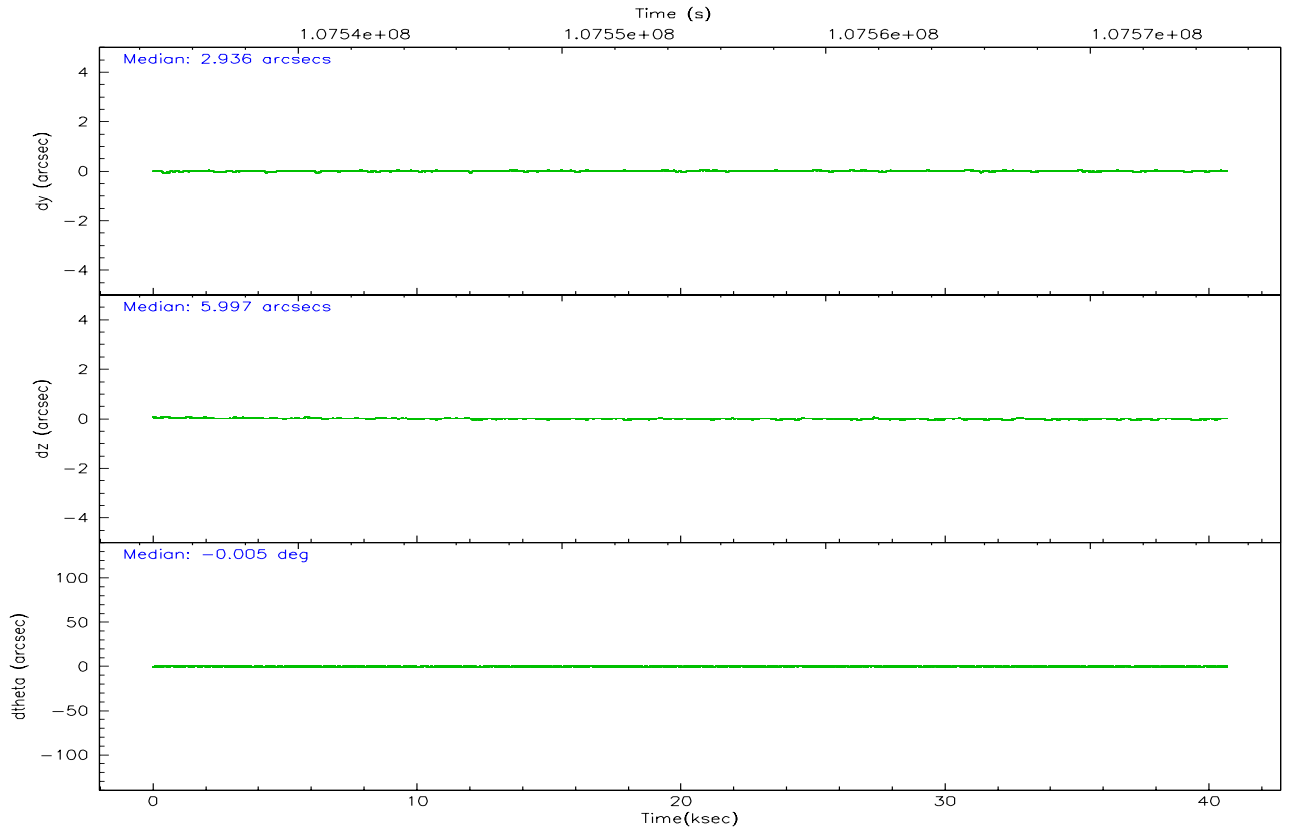
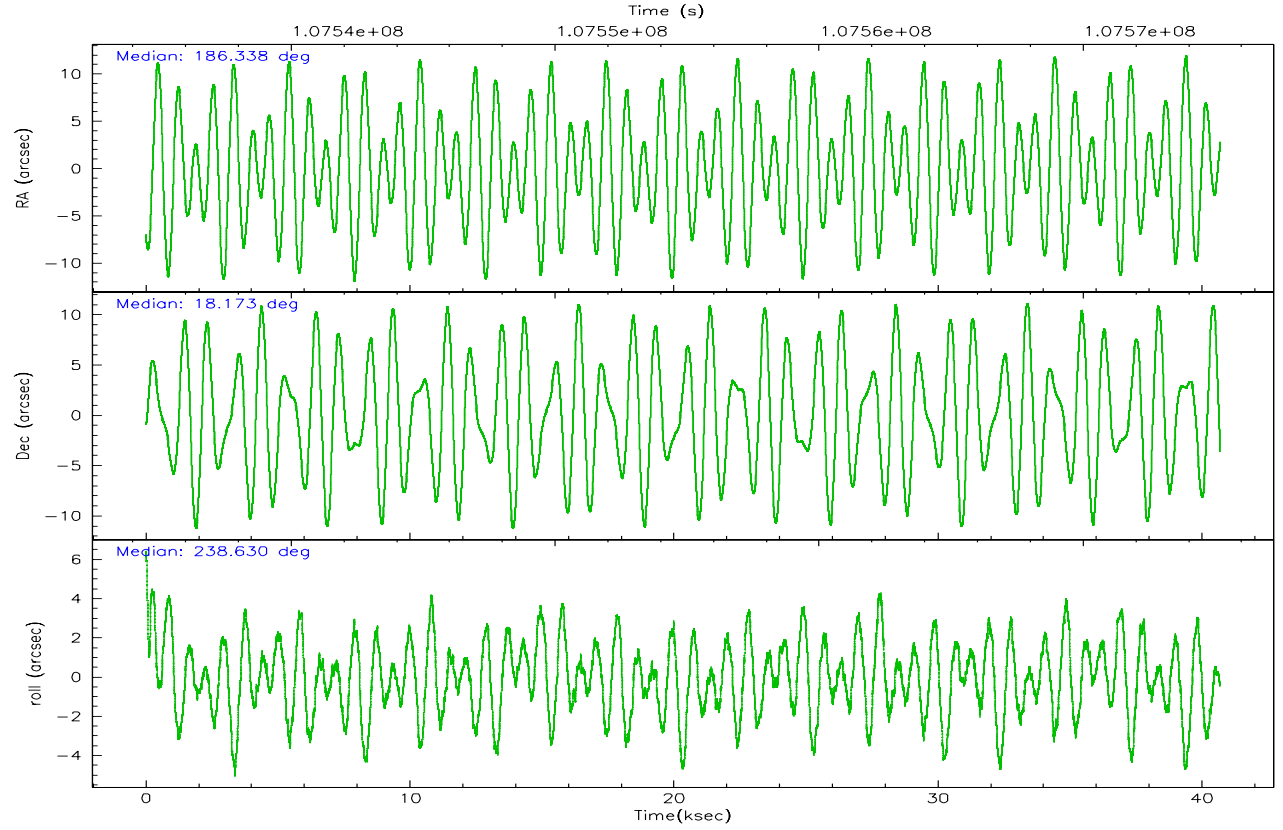
	ccd 2	ccd 3	ccd 5	ccd 6	ccd 7	ccd 8
grade 0 events	12260	12074	28383	12530	11439	20062
	4%	4%	7%	4%	3%	6%
grade 1 events	102	102	369	130	168	158
	0%	0%	0%	0%	0%	0%
grade 2 events	6004	5568	49990	5921	32668	13650
	2%	2%	13%	2%	9%	4%
grade 3 events	2660	2715	3952	2954	7675	6760
	1%	1%	1%	1%	2%	2%
grade 4 events	2630	2622	3661	2794	7483	6283
	1%	1%	0%	1%	2%	1%
grade 5 events	8736	9337	20029	10338	21508	13242
	3%	3%	5%	4%	6%	4%
grade 6 events	5000	4854	88684	5579	74618	15935
	1%	1%	23%	2%	22%	5%
grade 7 events	218474	207080	181335	213038	174879	241203
	85%	84%	48%	84%	52%	76%

2.2 Compared Parameters

Parameter	Planned	Actual	Parameter	Planned	Actual
Instrument	ACIS	ACIS	Obspar format version number	6	6
Detector	ACIS-235678	ACIS-235678	Obspar file type	PREDICTED	ACTUAL
Grating	NONE	NONE	Obspar update status	NONE	UPDATED
Data mode	FAINT	FAINT	Number of optional ACIS chips dropped	0	0
Observation mode	POINTING	POINTING	On-chip summing requested	N	N
Pointing RA	186.338240	186.3378466779685	Subarray requested	NONE	NONE
Pointing Dec	18.200296	18.17302188910559	Alternating exposures requested	N	N
Pointing Roll	238.478269	238.6350245263273	Primary exposure time	0.000000	3.2
SIM focus pos (mm)	-0.684267	-0.6828225247311905			
SIM defocus (mm)	0	0.001444936568705701			
SIM translation stage pos (mm)	-190.132523	-190.1400660498719			
SIM translation stage offset (mm)	0	0.00754346686406393			
Observation start time	107534696.184000	107534074.48506			
Observation start date	2001-05-29T14:43:52	2001-05-29T14:34:34			
Observation end time	107575196.184000	107575438.36167			
Observation end date	2001-05-30T01:58:52	2001-05-30T02:03:58			
Read mode	TIMED	TIMED			

2.3 Aspect



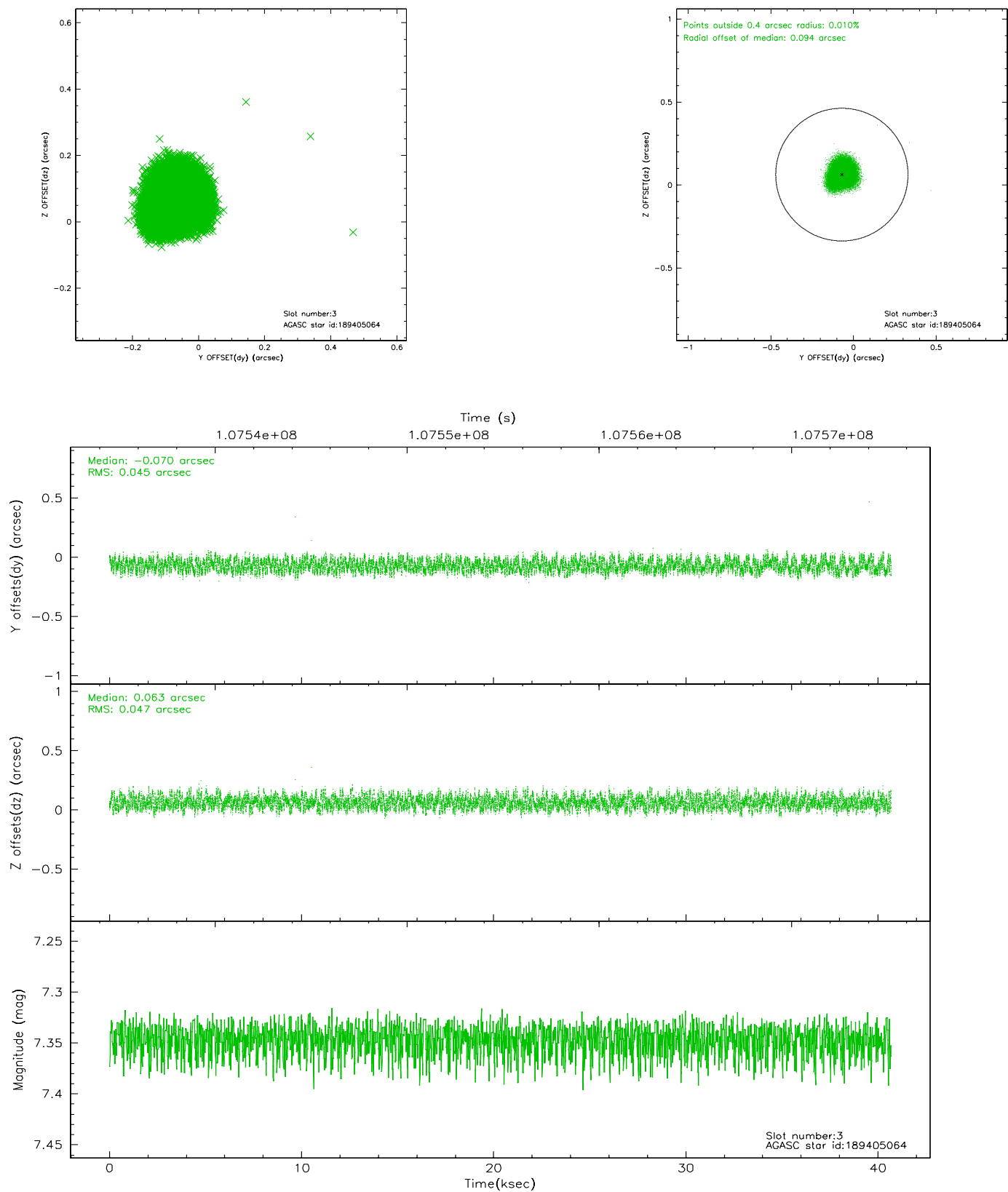


Slot Statistics

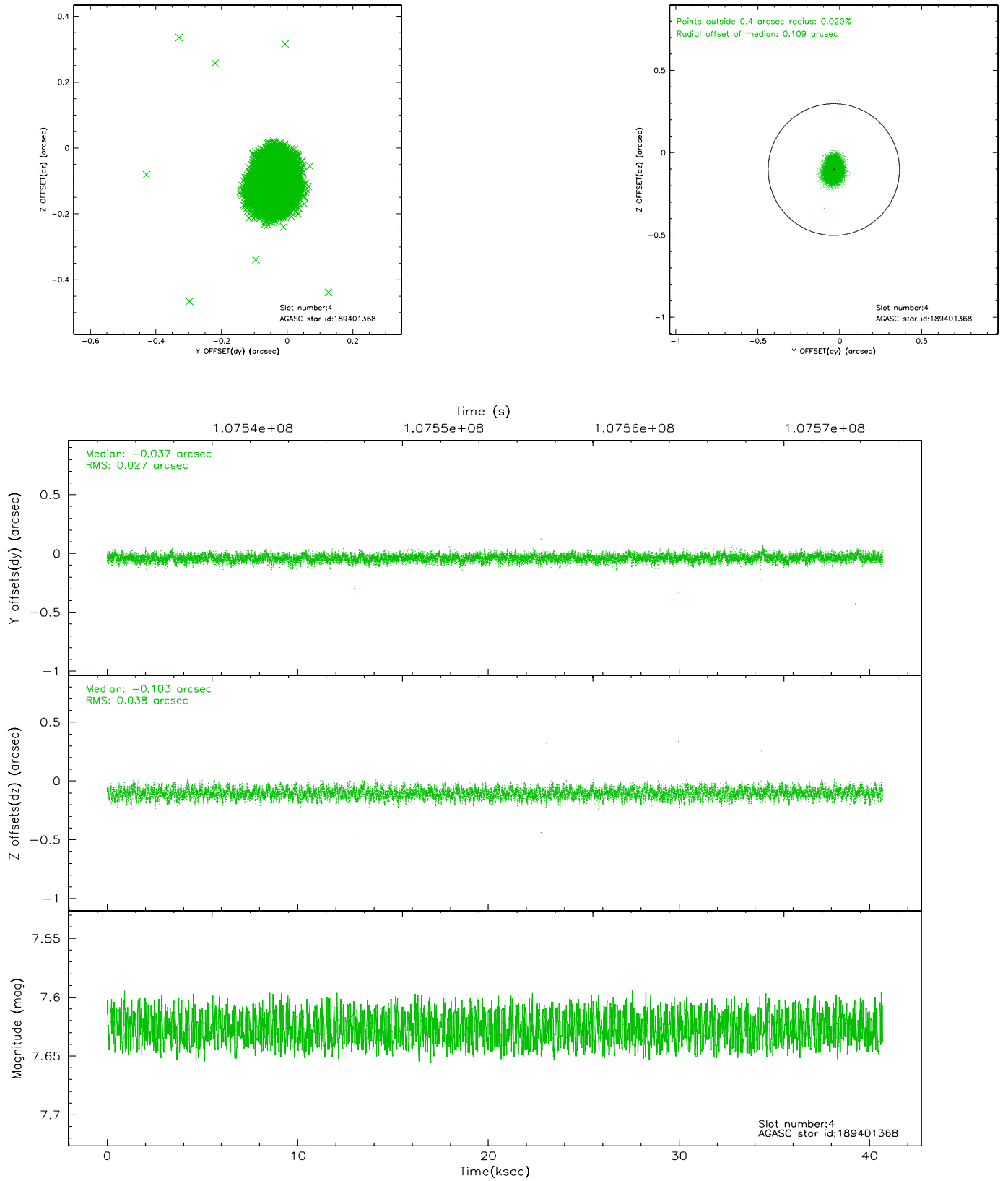
slot	status	id	mag	n_pts	med_dy	med_dz	dr1	dr2	ra	dec	mean_y	mean_z
0	FID	ACIS-S-2	7.11	9923	-0.013	0.036	0.006	0.010	0.000000	0.000000	-755.55	-1727.12
1	FID	ACIS-S-4	7.20	9922	-0.085	-0.003	0.005	0.009	0.000000	0.000000	2157.61	181.37
2	FID	ACIS-S-5	7.23	9922	0.066	-0.024	0.006	0.010	0.000000	0.000000	-1808.34	174.96
3	GUIDE	189405064	7.35	19846	-0.070	0.063	0.072	0.106	186.887888	17.834342	136.30	2293.03
4	GUIDE	189401368	7.63	19846	-0.037	-0.103	0.049	0.081	186.150770	18.668355	-1101.62	-1426.32
5	GUIDE	189403984	8.27	19842	-0.042	0.068	0.066	0.108	187.021519	18.330647	-1624.13	1742.66
6	GUIDE	189665040	8.41	19840	-0.098	0.003	0.058	0.097	186.390146	18.867028	-2137.91	-1104.35
7	GUIDE	189411056	8.71	19844	0.251	-0.032	0.058	0.095	186.168211	17.852769	1371.79	157.38

2.4 Star Slots

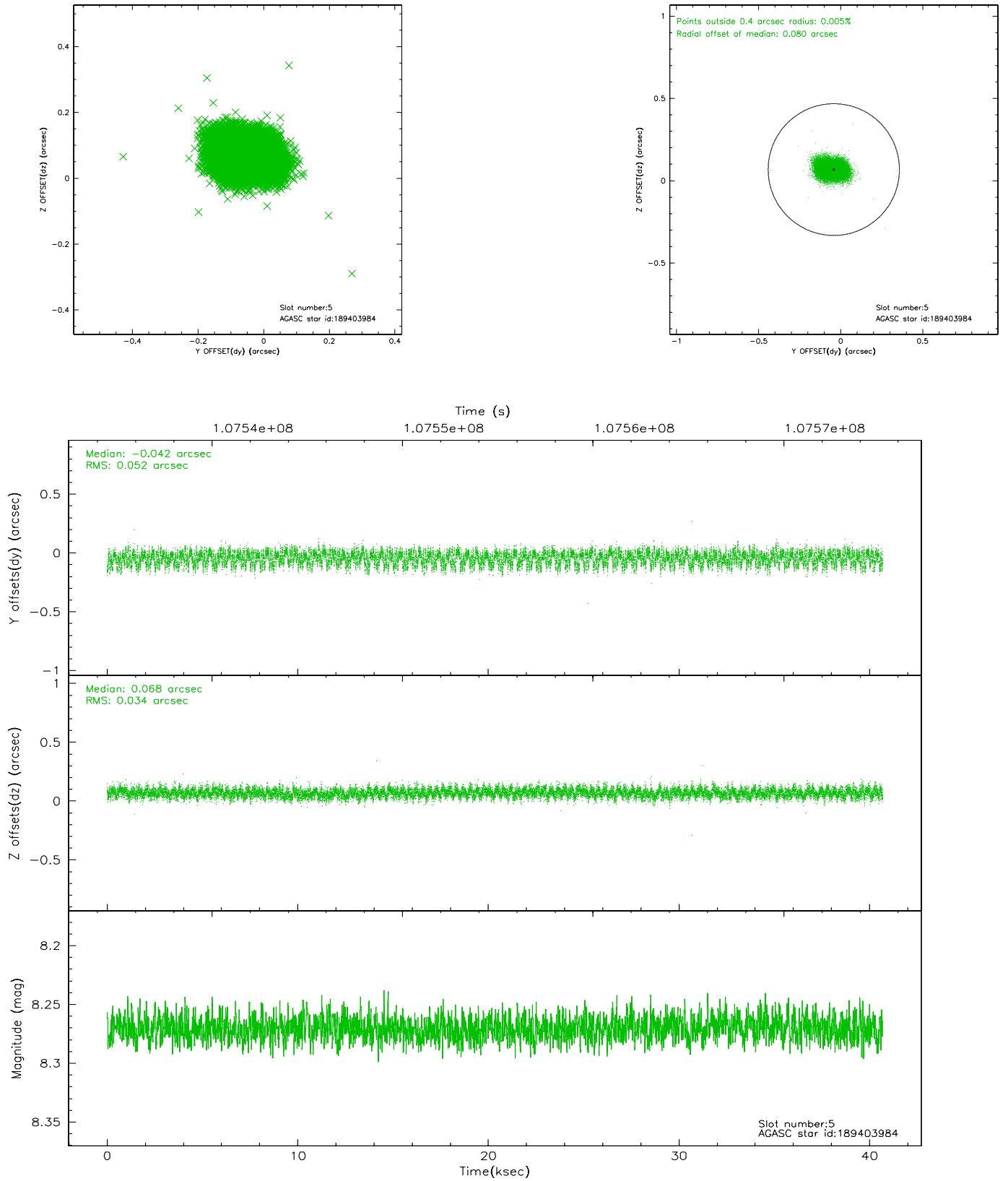
2.4.1 Slot 3



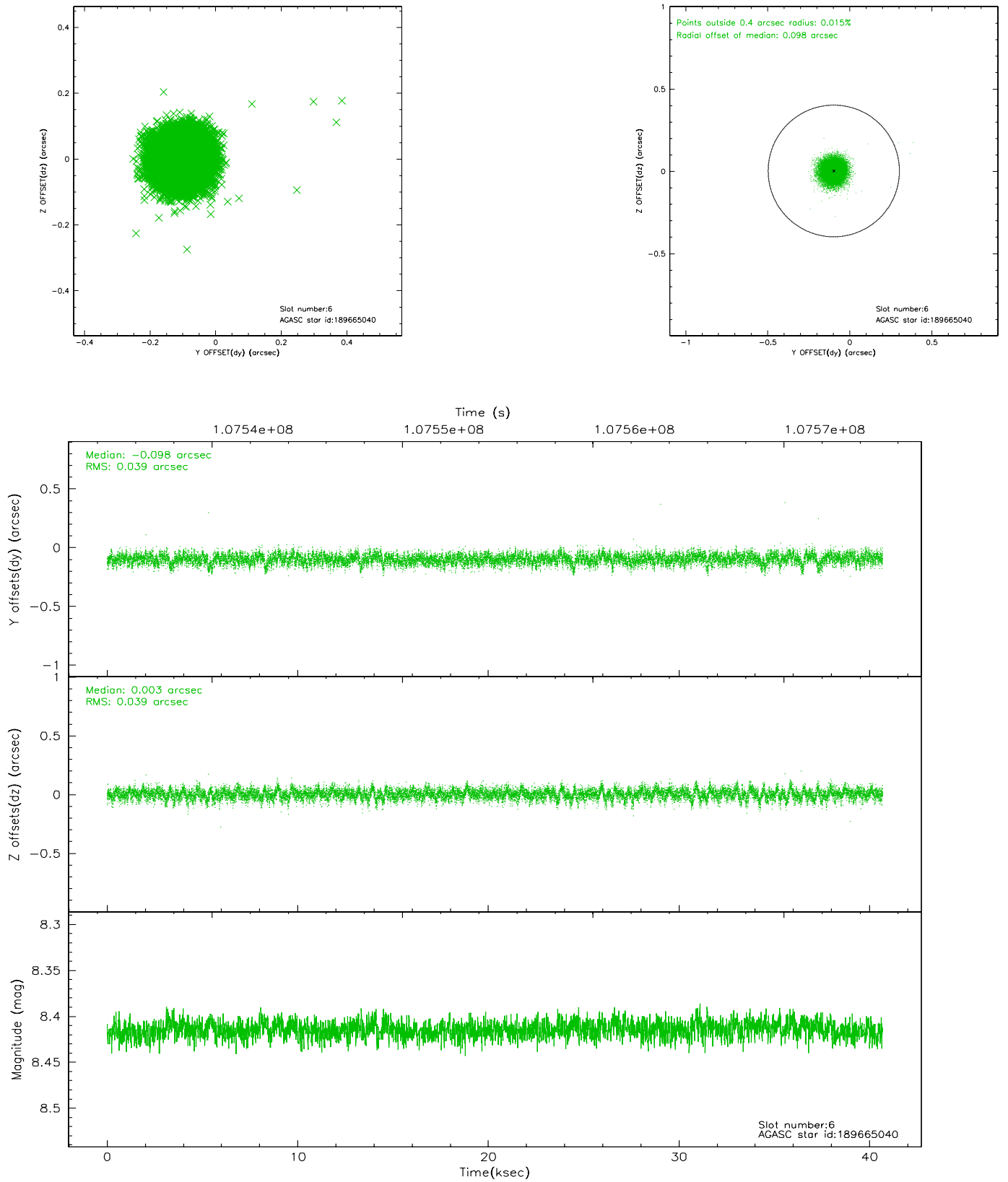
2.4.2 Slot 4



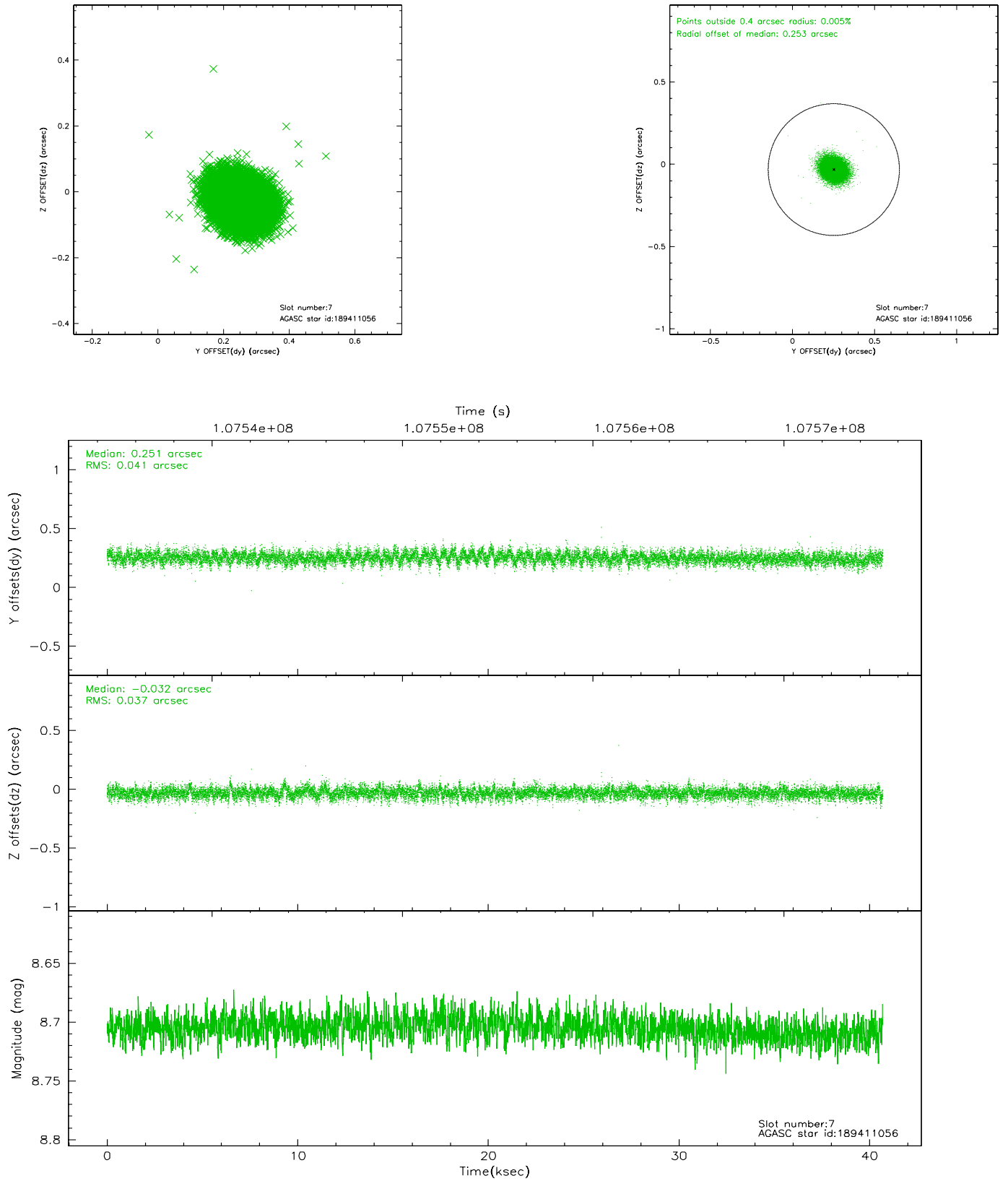
2.4.3 Slot 5



2.4.4 Slot 6

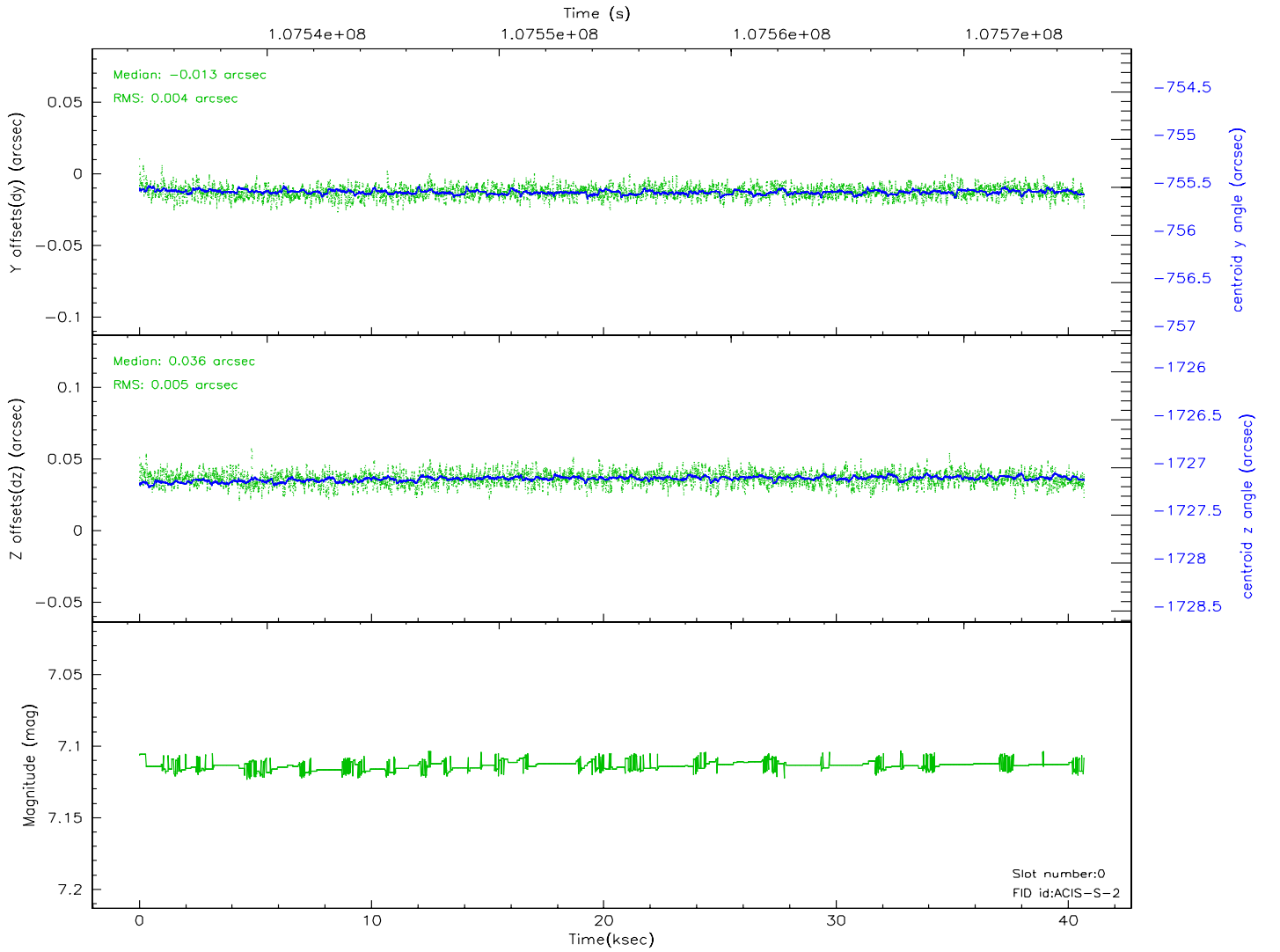
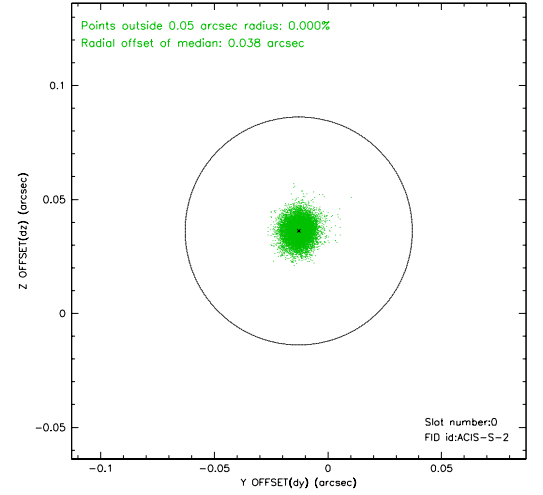
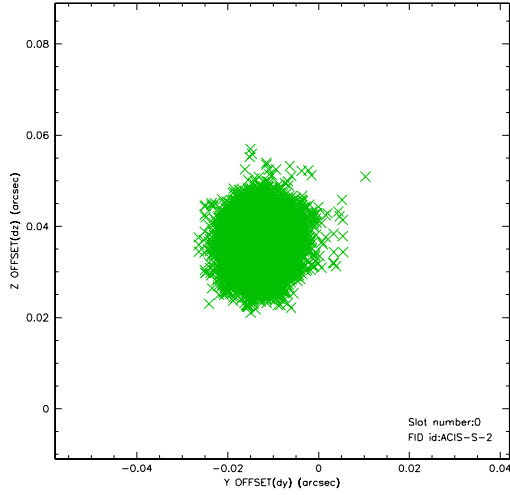


2.4.5 Slot 7

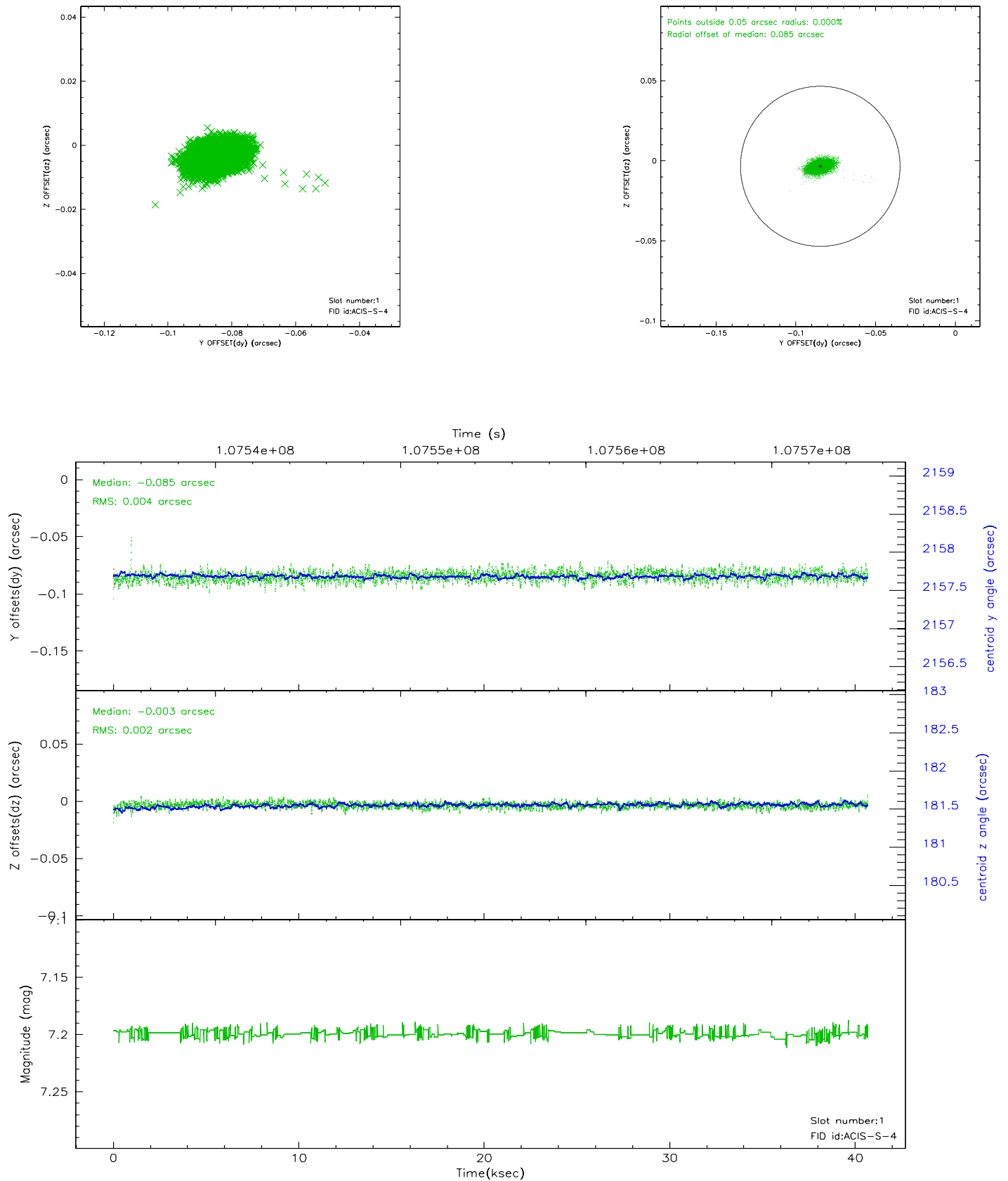


2.5 FID Slots

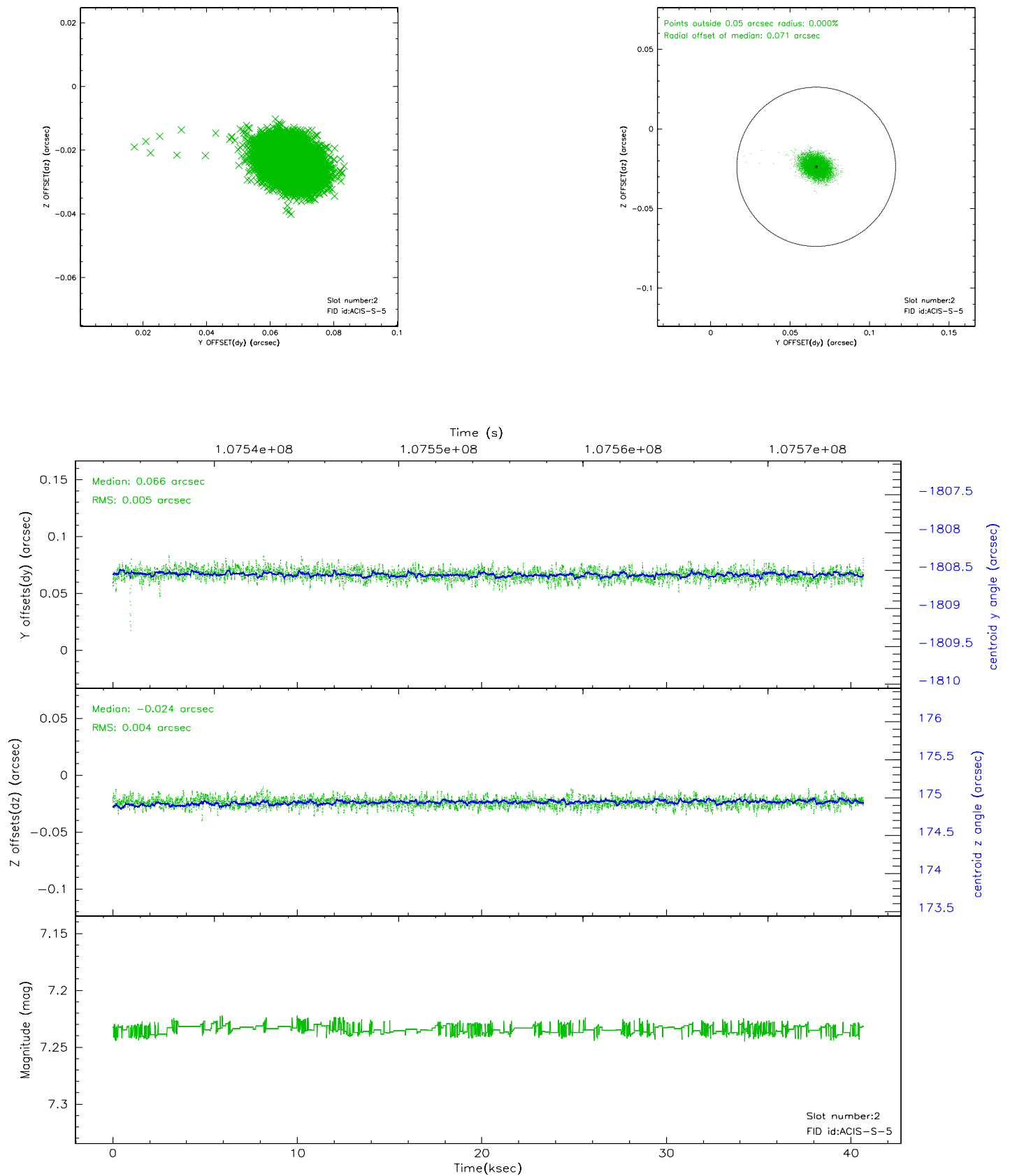
2.5.1 Slot 0



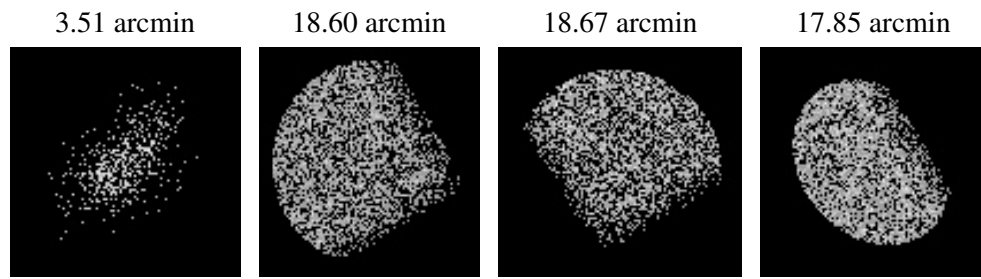
2.5.2 Slot 1



2.5.3 Slot 2



3 Point Sources



A Summary

A.1 Status

V&V Scientist	Jen Lauer
V&V Date (YYYY-MM-DD)	2006.11.24
V&V Edition	1
V&V Disposition and Status	OK
V&V Charge Time	40.259

A.2 Comments