

# V&V Reference Report

## L2 ASCDS Version : 10.3.3

Observation 16966 - L2 Version 1  
Chandra X-Ray Center

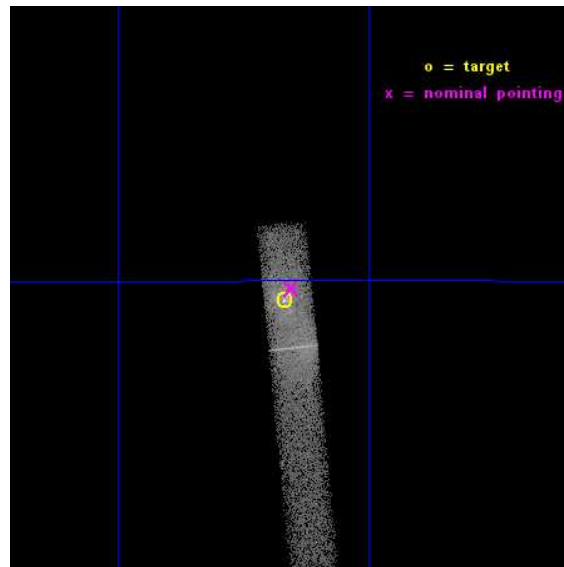
L2 Processing Date : May 14 2015

## Contents

<b>1</b>	<b>Front</b>	<b>2</b>
<b>2</b>	<b>OBI</b>	<b>3</b>
2.1	OBI . . . . .	3
2.1.1	Images . . . . .	3
2.1.2	Bias . . . . .	3
2.1.3	Parameters . . . . .	4
2.1.4	Events . . . . .	4
2.2	Compared Parameters . . . . .	5
2.3	Aspect . . . . .	6
2.4	Star Slots . . . . .	9
2.4.1	Slot 3 . . . . .	9
2.4.2	Slot 4 . . . . .	10
2.4.3	Slot 5 . . . . .	11
2.4.4	Slot 6 . . . . .	12
2.4.5	Slot 7 . . . . .	13
2.5	FID Slots . . . . .	14
2.5.1	Slot 0 . . . . .	14
2.5.2	Slot 1 . . . . .	15
2.5.3	Slot 2 . . . . .	16
<b>A</b>	<b>Summary</b>	<b>17</b>
A.1	Status . . . . .	17
A.2	Comments . . . . .	17

# 1 Front

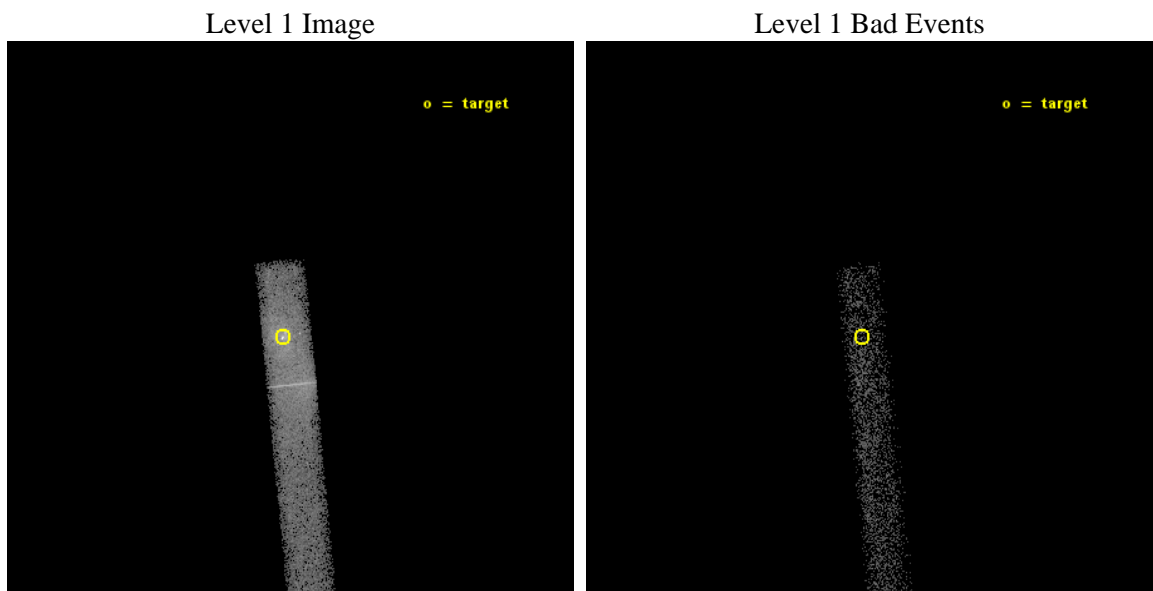
seq_num	601159	Sequence number
obs_id	16966	Observation id
title	Monitoring the Tidal Interaction of the Dusty Object G2 Approaching Sgr A*	Proposal title
observer	Professor Gordon Garmire	Principal investigator
object	SgrA*	Source name
dtcycle	0	&#160
cycle	P	events from which exps? Prim/Second/Both
ra_targ	266.416667	Observer's specified target RA [deg]
dec_targ	-29.007833	Observer's specified target Dec [deg]
ra_nom	266.41328158637	Nominal RA [deg]
dec_nom	-29.003292029535	Nominal Dec [deg]
roll_nom	84.155006327645	Nominal Roll [deg]
revision	1	Processing version of data
ontime	25069.998505592	Sum of GTIs [s]
livetime	22737.165341549	Livetime [s]
ontime7	25069.998505592	Sum of GTIs [s]
l2events	31978	Number of level 2 events



## 2 OBI

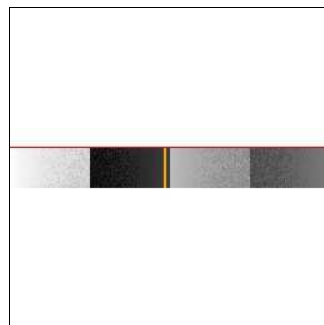
### 2.1 OBI

#### 2.1.1 Images



#### 2.1.2 Bias

Chip 7



### 2.1.3 Parameters

obi_num	0	Obi number	sched_exp_time	25000.000000	[s] Scheduled observation exposure time
ascdsver	10.3.3	Processing system revision	ontime	25069.998505592	Sum of GTIs [s]
caldsver	4.6.7	&#160	ontime7	25069.998505592	Sum of GTIs [s]
date	2015-05-15T02:52:22	Date and time of file creation	l1events	44042	Number of level 1 events
revision	1	Processing version of data			

### 2.1.4 Events

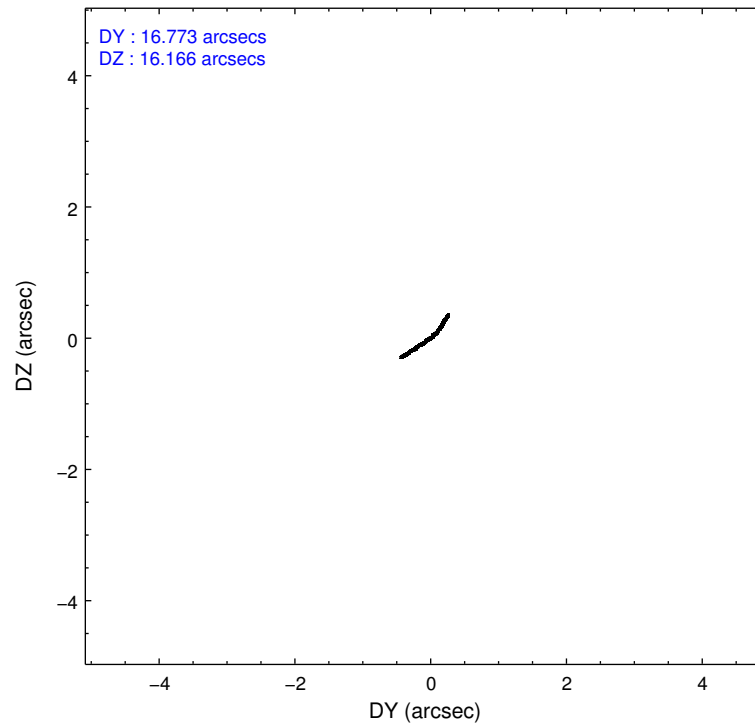
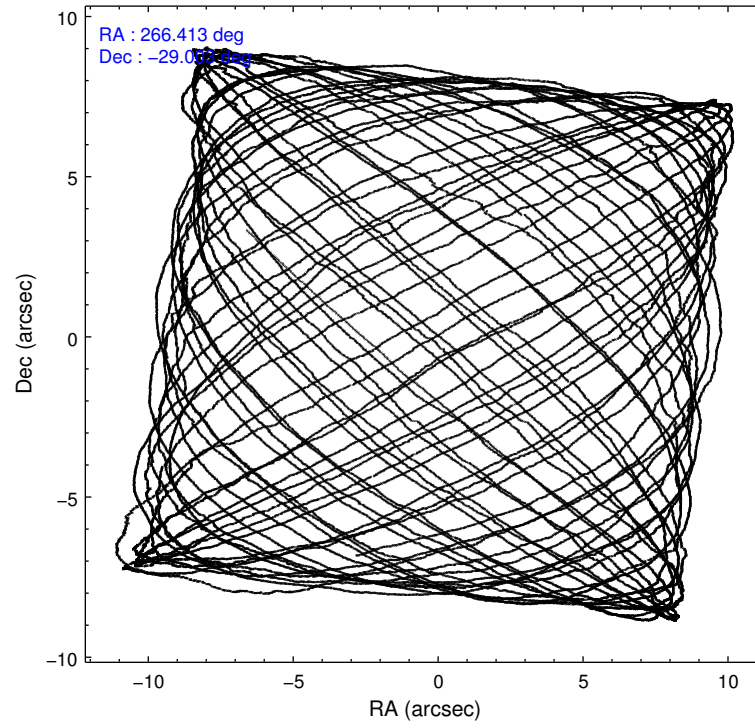
	<b>ccd 7</b>
level 1 events	44042
rejected events	11458
rejected %	26%

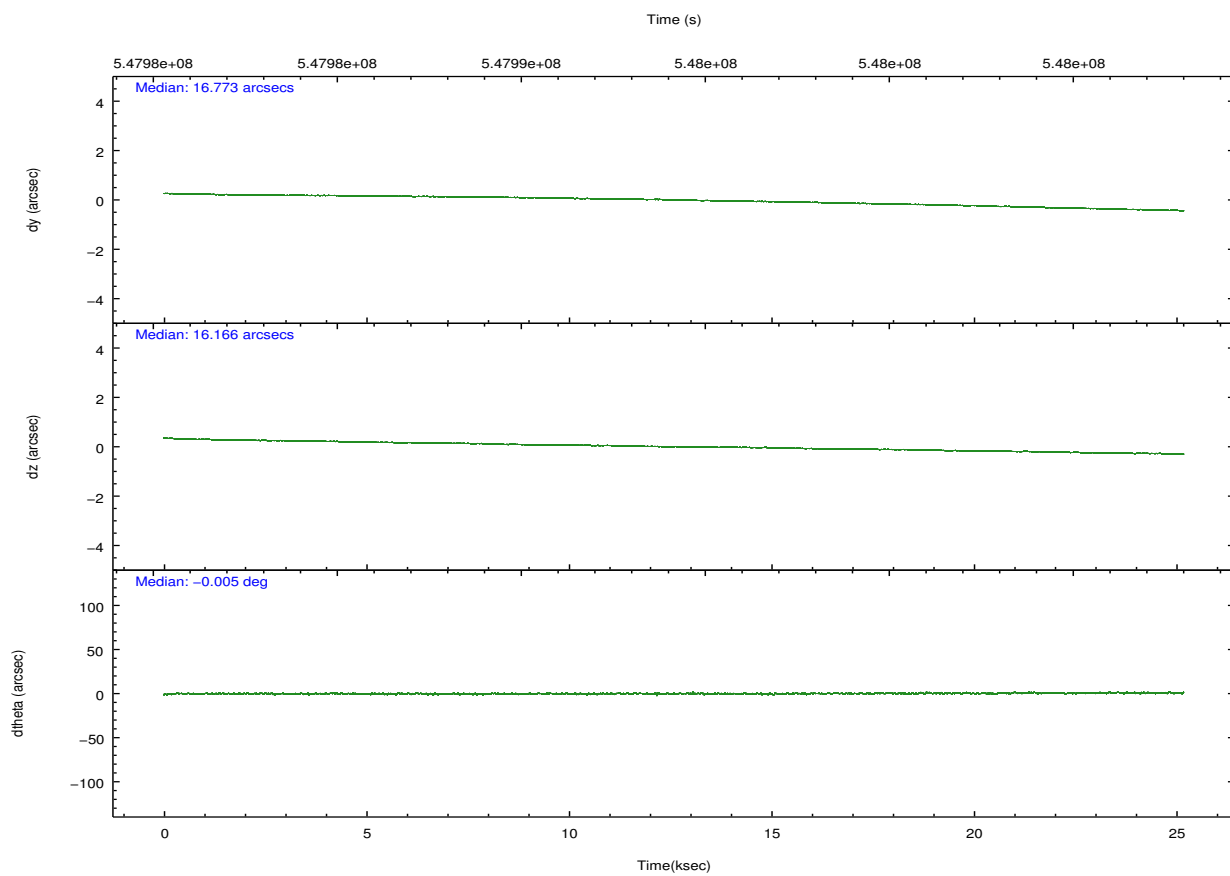
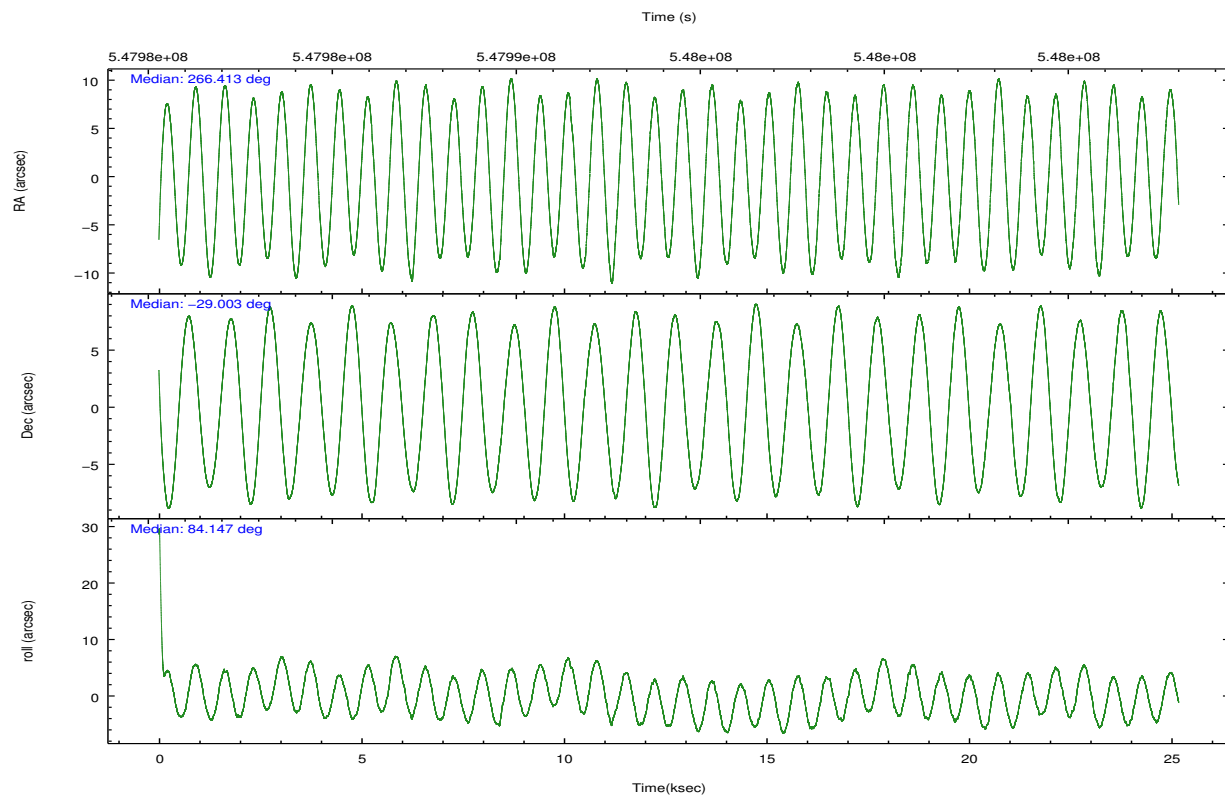
	<b>ccd 7</b>
grade 0 events	5801
	13%
grade 1 events	38
	0%
grade 2 events	7321
	16%
grade 3 events	3629
	8%
grade 4 events	3532
	8%
grade 5 events	2374
	5%
grade 6 events	12303
	27%
grade 7 events	9044
	20%

## 2.2 Compared Parameters

Parameter	Planned	Actual	Parameter	Planned	Actual
Instrument	ACIS	ACIS	Obspar format version number	7	7
Detector	ACIS-7	ACIS-7	Obspar file type	PREDICTED	ACTUAL
Grating	NONE	NONE	Obspar update status	NONE	UPDATED
Data mode	FAINT	FAINT	Number of optional ACIS chips dropped	0	0
Observation mode	POINTING	POINTING	On-chip summing requested	N	N
[deg] Pointing RA	266.426482	266.4132815863746	Subarray requested	CUSTOM	1/8
[deg] Pointing Dec	-29.028179	-29.00329202953457	Subarray start row	449	449
[deg] Pointing Roll	84.004768	84.1550063276448	Subarray row count	128	128
[mm] SIM focus pos	-0.684267	-0.6828225247311905	Alternating exposures requested	N	N
[mm] SIM defocus	0	0.001444936568705701	[s] Primary exposure time	0.000000	0.4
[mm] SIM translation stage pos	-190.132523	-190.1400660498719			
[mm] SIM translation stage offset	0	0.00754346686406393			
[s] Observation start time (MET)	547981733.184000	547980411.6339999			
Observation start date	2015-05-14T09:07:46	2015-05-14T08:46:51			
[s] Observation end time (MET)	548006733.184000	548008012.32305			
Observation end date	2015-05-14T16:04:26	2015-05-14T16:26:52			
Read mode	TIMED	TIMED			

## 2.3 Aspect



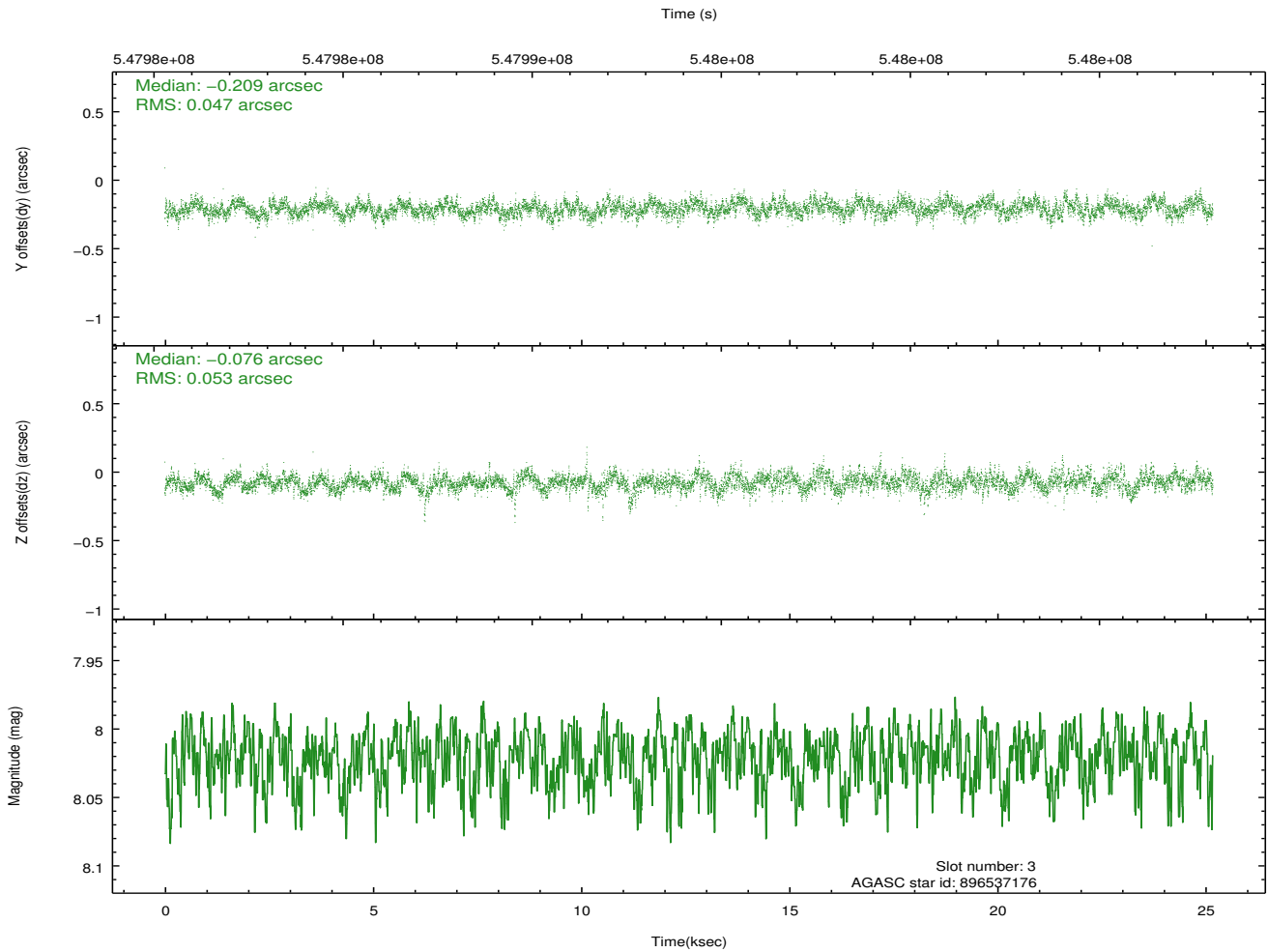
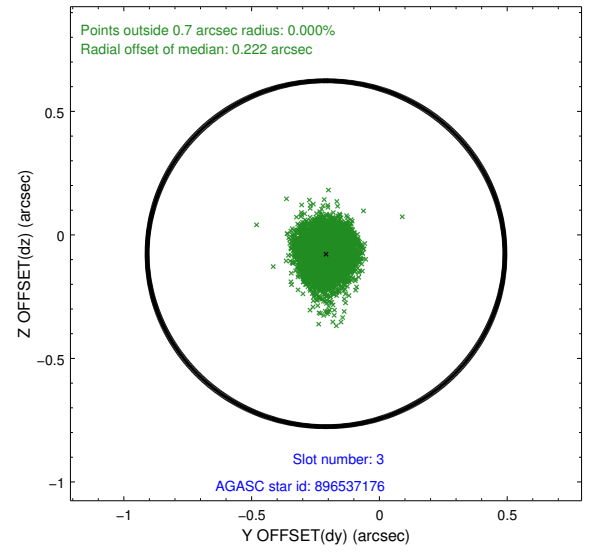
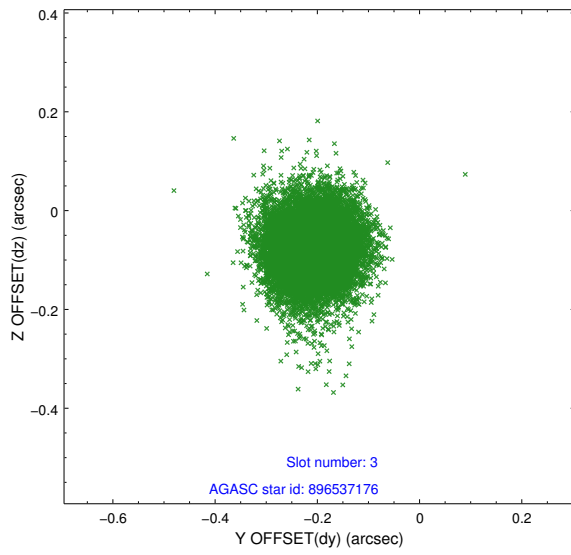


### Slot Statistics

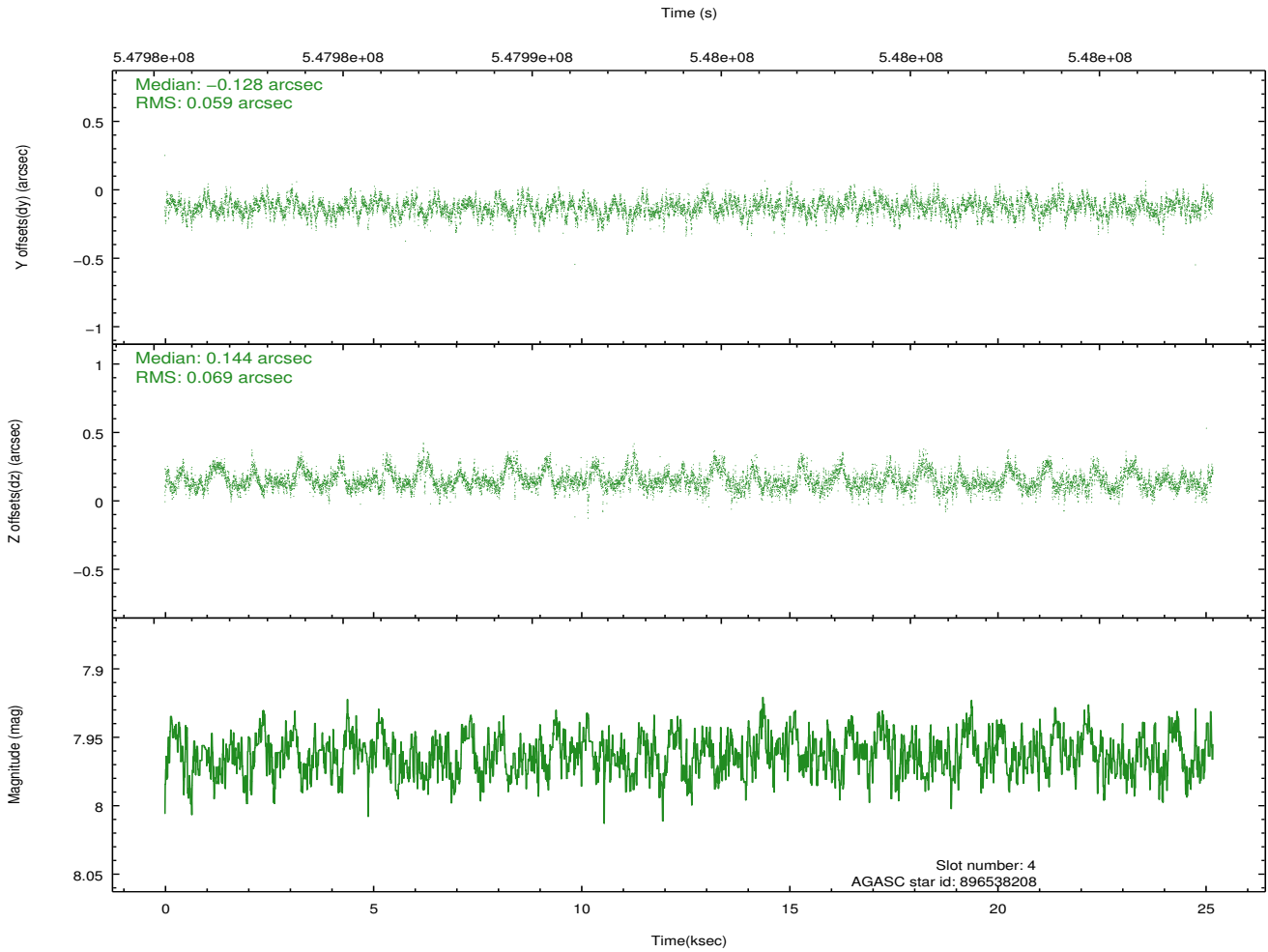
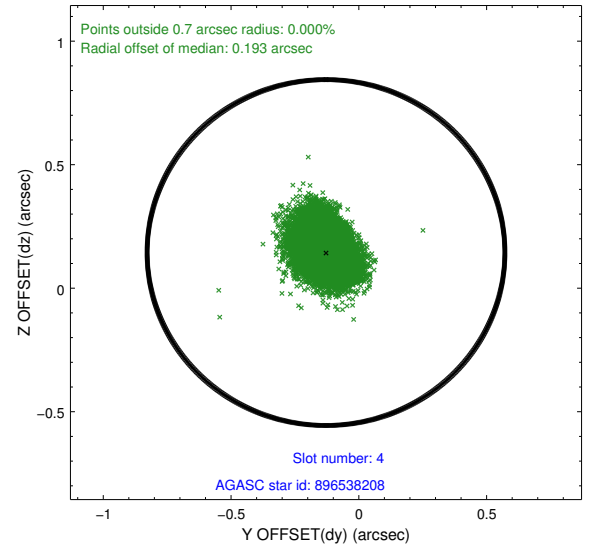
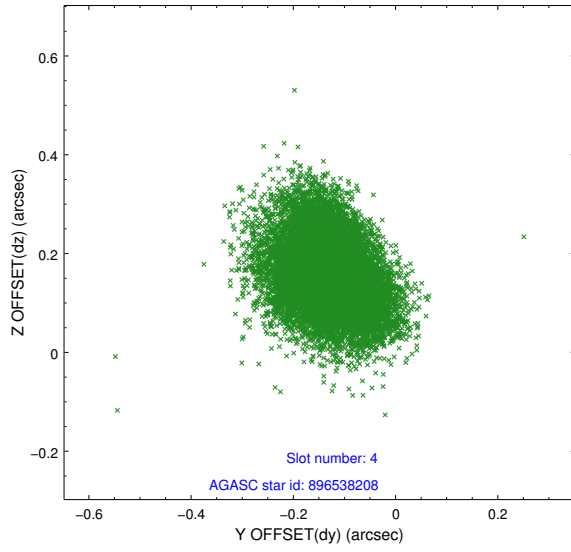
slot	status	used	id	mag	n_pts	med_dy	med_dz	dr1	dr2	ra	dec	mean_y	mean_z
0	FID		ACIS-S-1	7.15	6142	0.160	-0.073	0.008	0.013	0.000000	0.000000	926.42	-1733.30
1	FID		ACIS-S-2	7.08	6142	-0.162	-0.012	0.007	0.011	0.000000	0.000000	-769.74	-1737.89
2	FID		ACIS-S-6	7.30	6142	-0.018	0.091	0.007	0.014	0.000000	0.000000	391.88	808.09
3	GUIDE	used	896537176	8.02	12284	-0.209	-0.076	0.075	0.122	266.498272	-28.678259	1276.48	-93.49
4	GUIDE	used	896538208	7.96	12284	-0.128	0.144	0.096	0.161	267.176969	-28.671626	1517.29	-2223.56
5	GUIDE	used	896541360	7.71	12281	0.180	0.327	0.077	0.121	266.684478	-29.453744	-1439.39	-964.18
6	GUIDE	used	896541576	8.18	12281	-0.020	0.080	0.083	0.132	267.051055	-28.762912	1150.84	-1860.57
7	GUIDE	used	896403224	8.29	12280	0.174	-0.480	0.113	0.185	265.612825	-29.438915	-1746.02	2380.99

## 2.4 Star Slots

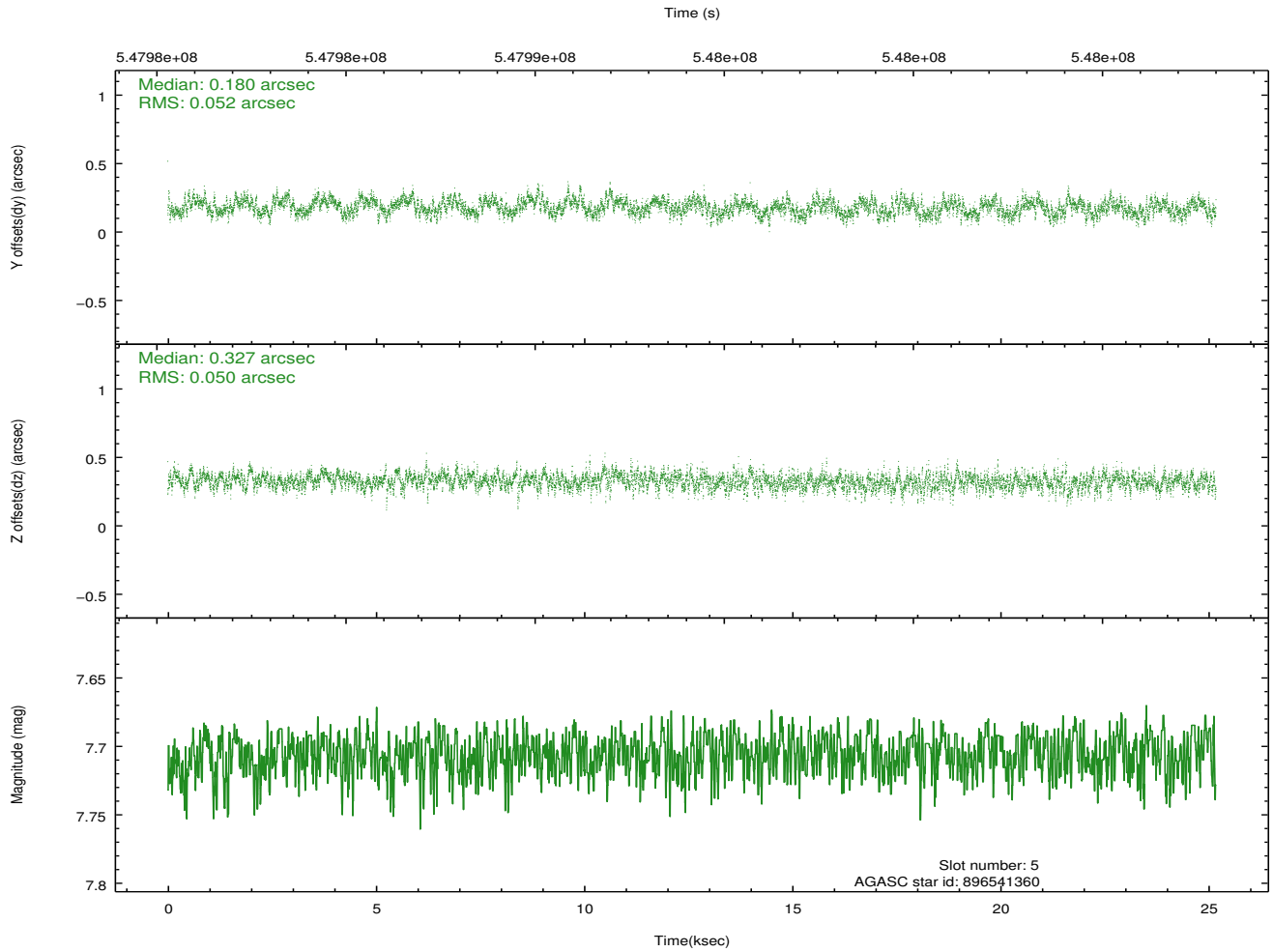
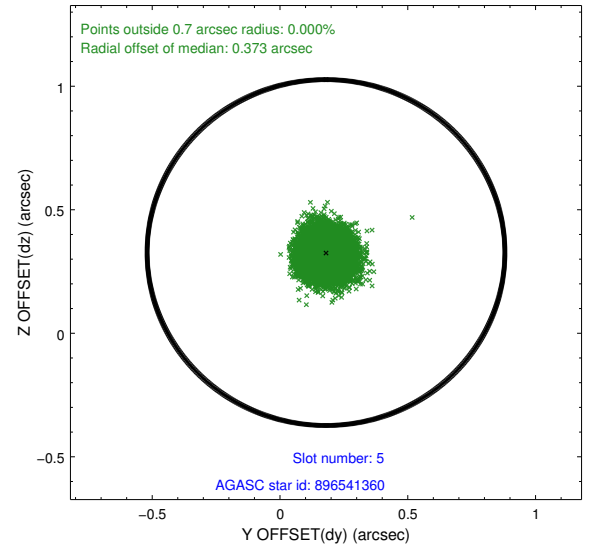
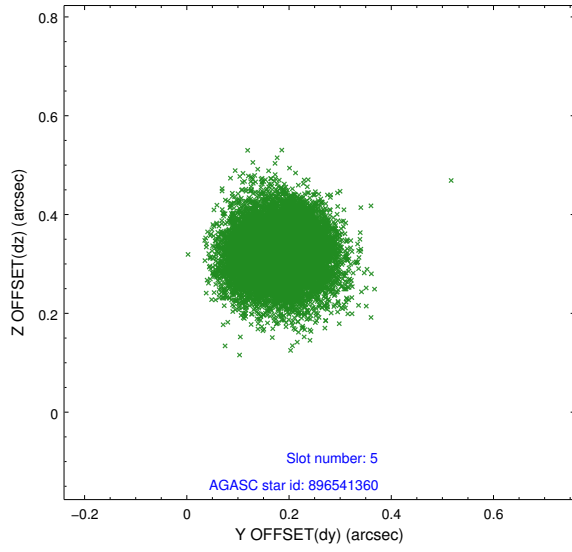
### 2.4.1 Slot 3



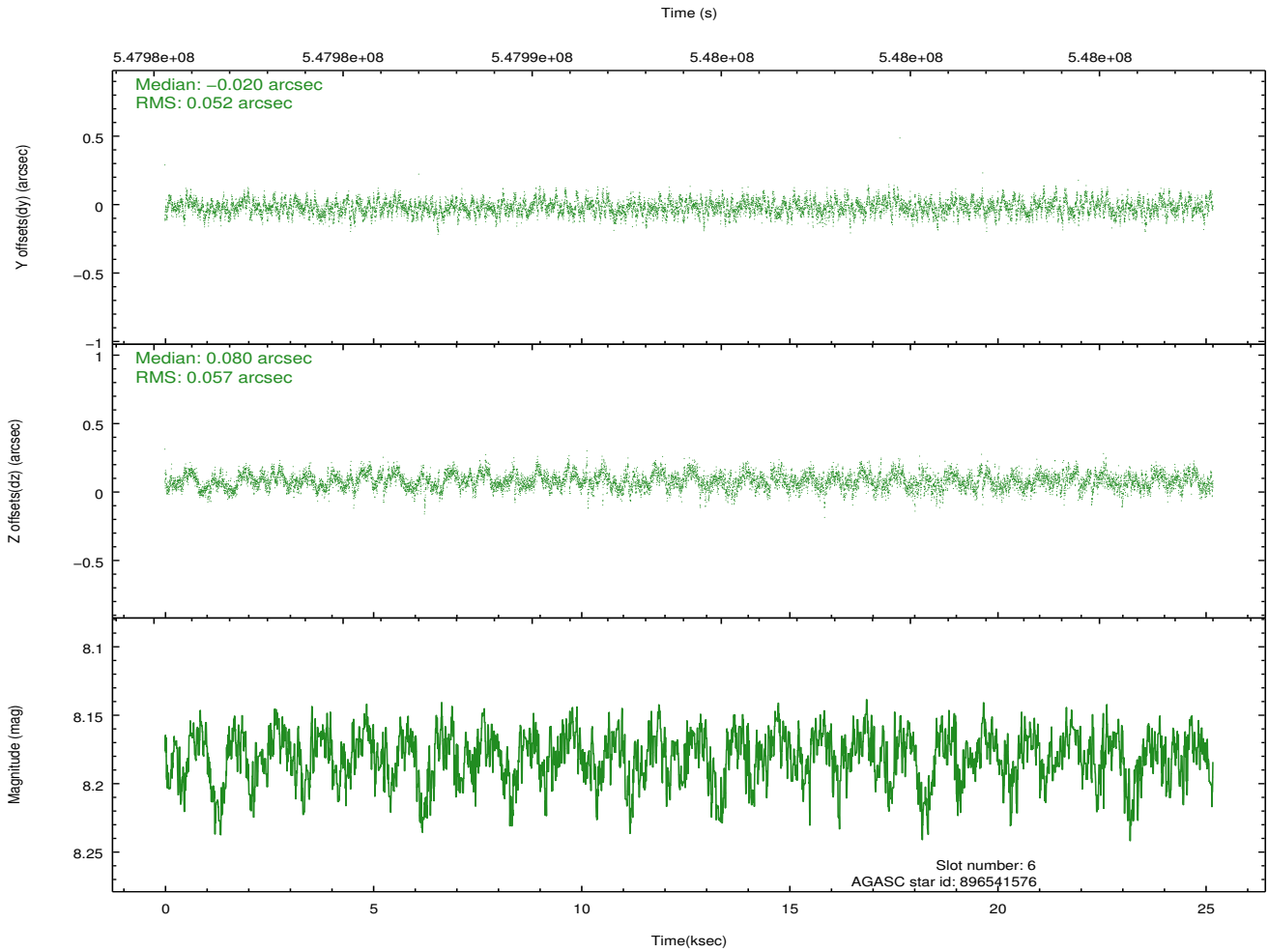
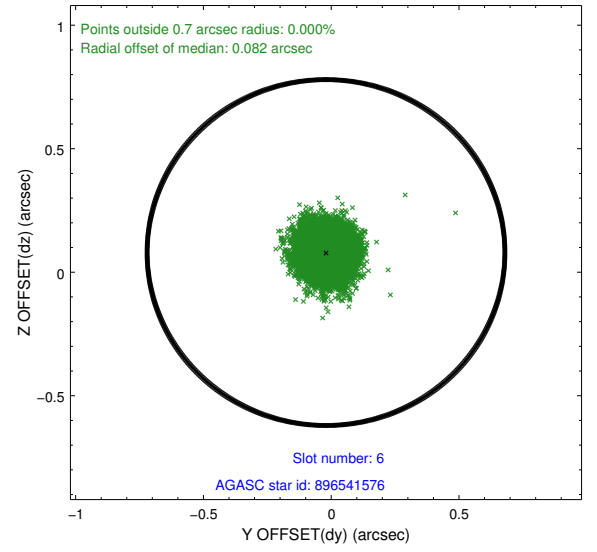
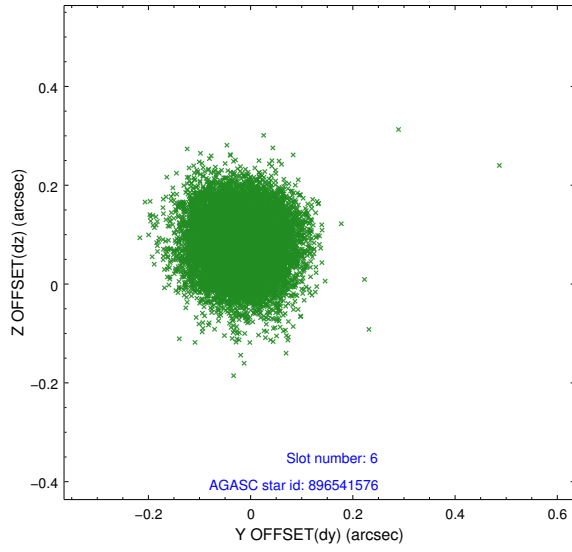
## 2.4.2 Slot 4



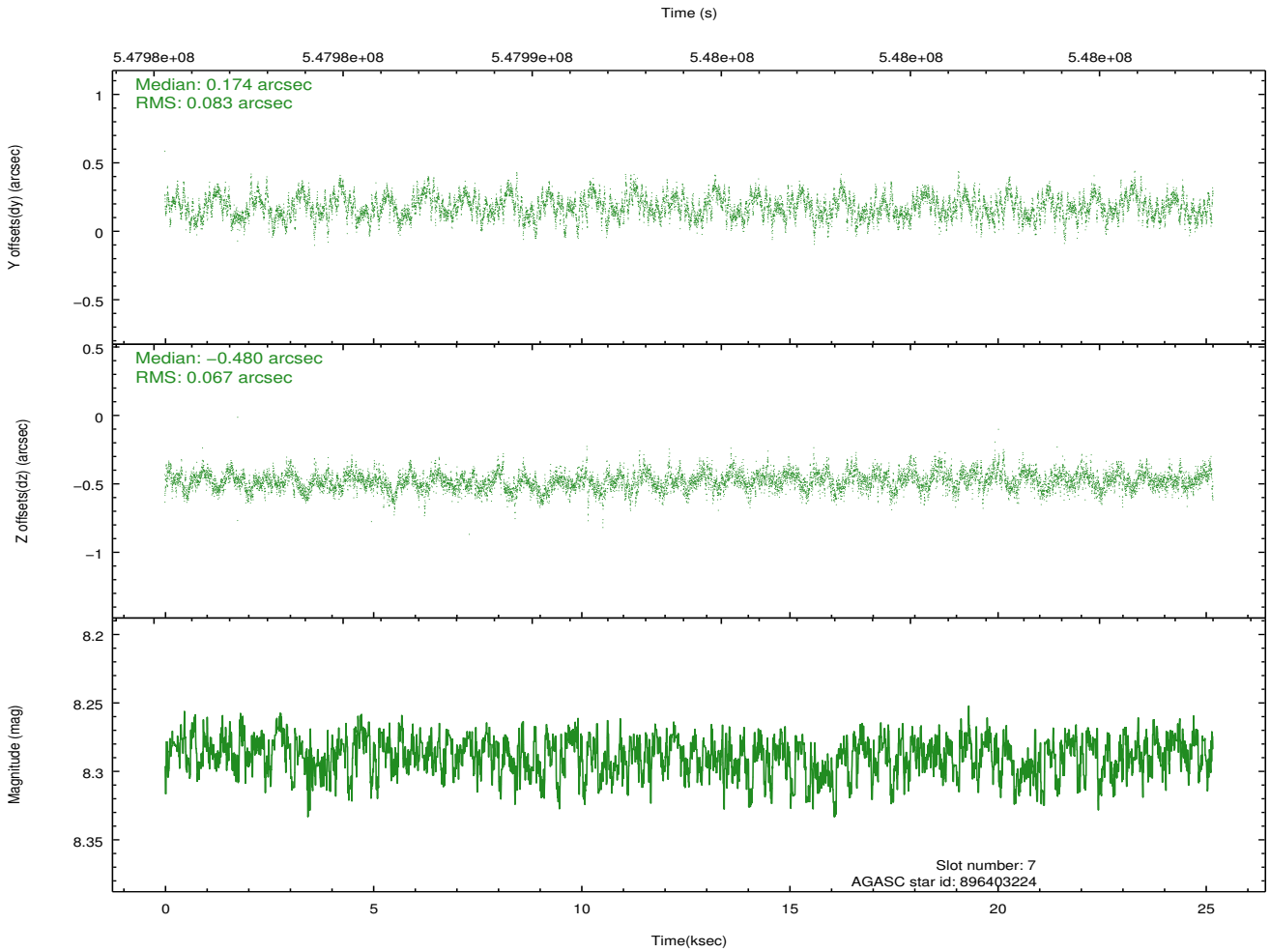
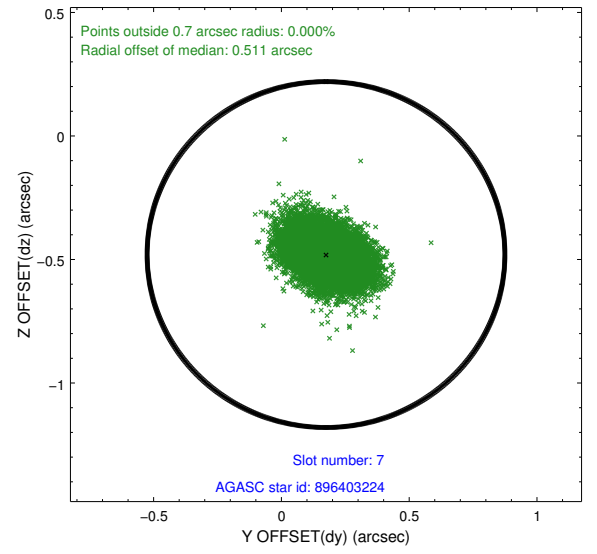
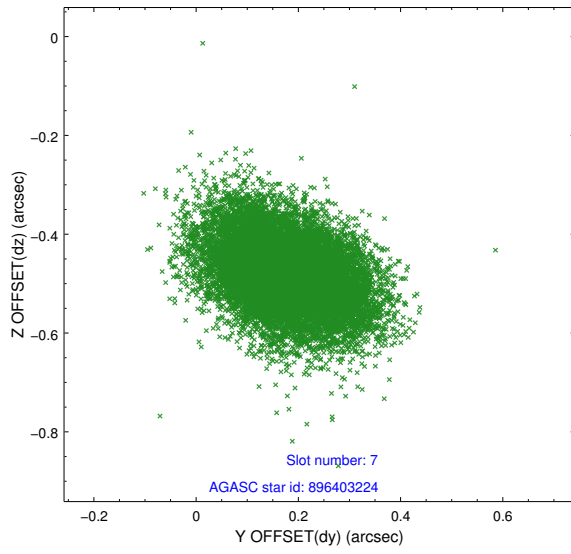
### 2.4.3 Slot 5



## 2.4.4 Slot 6

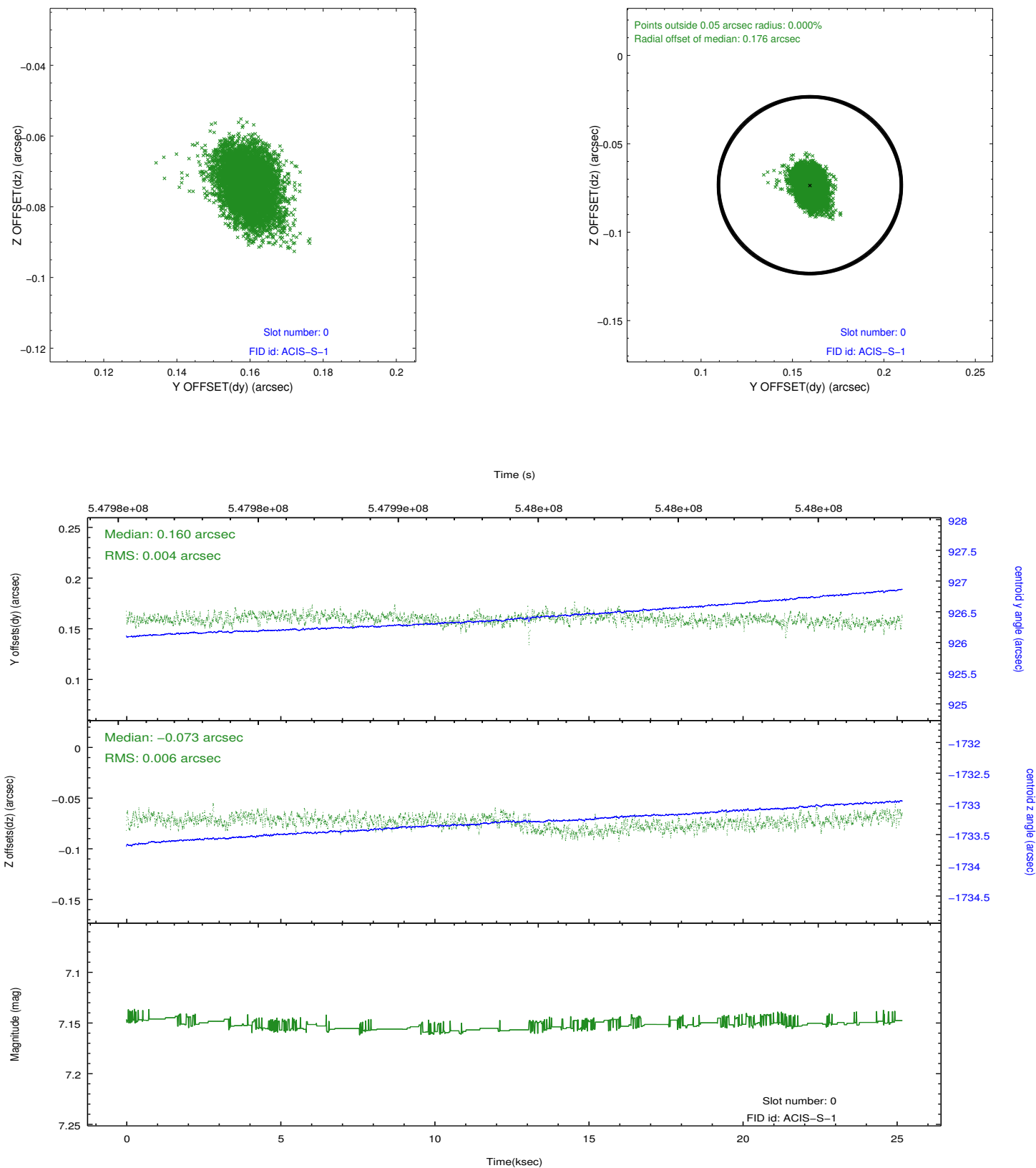


## 2.4.5 Slot 7

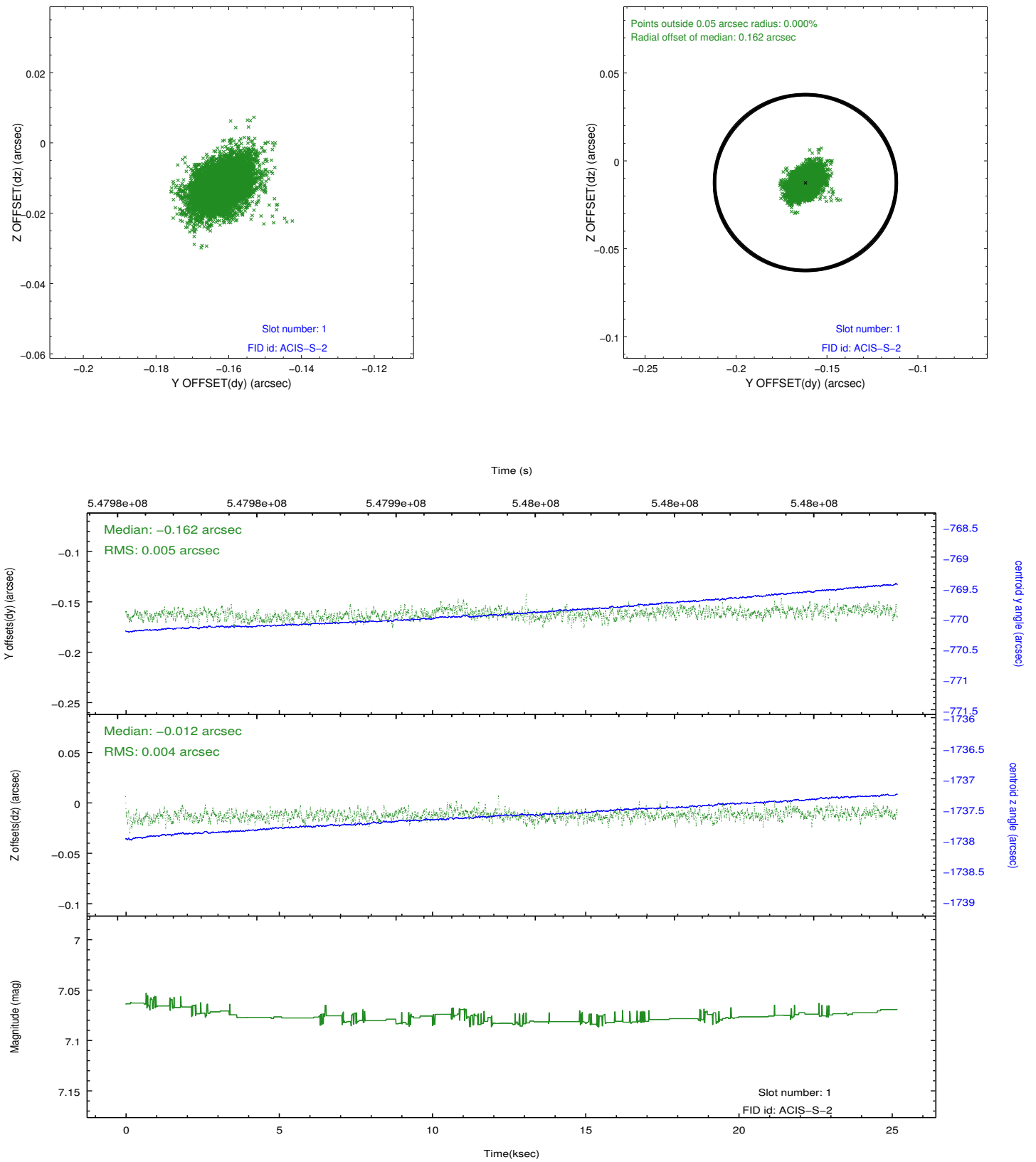


## 2.5 FID Slots

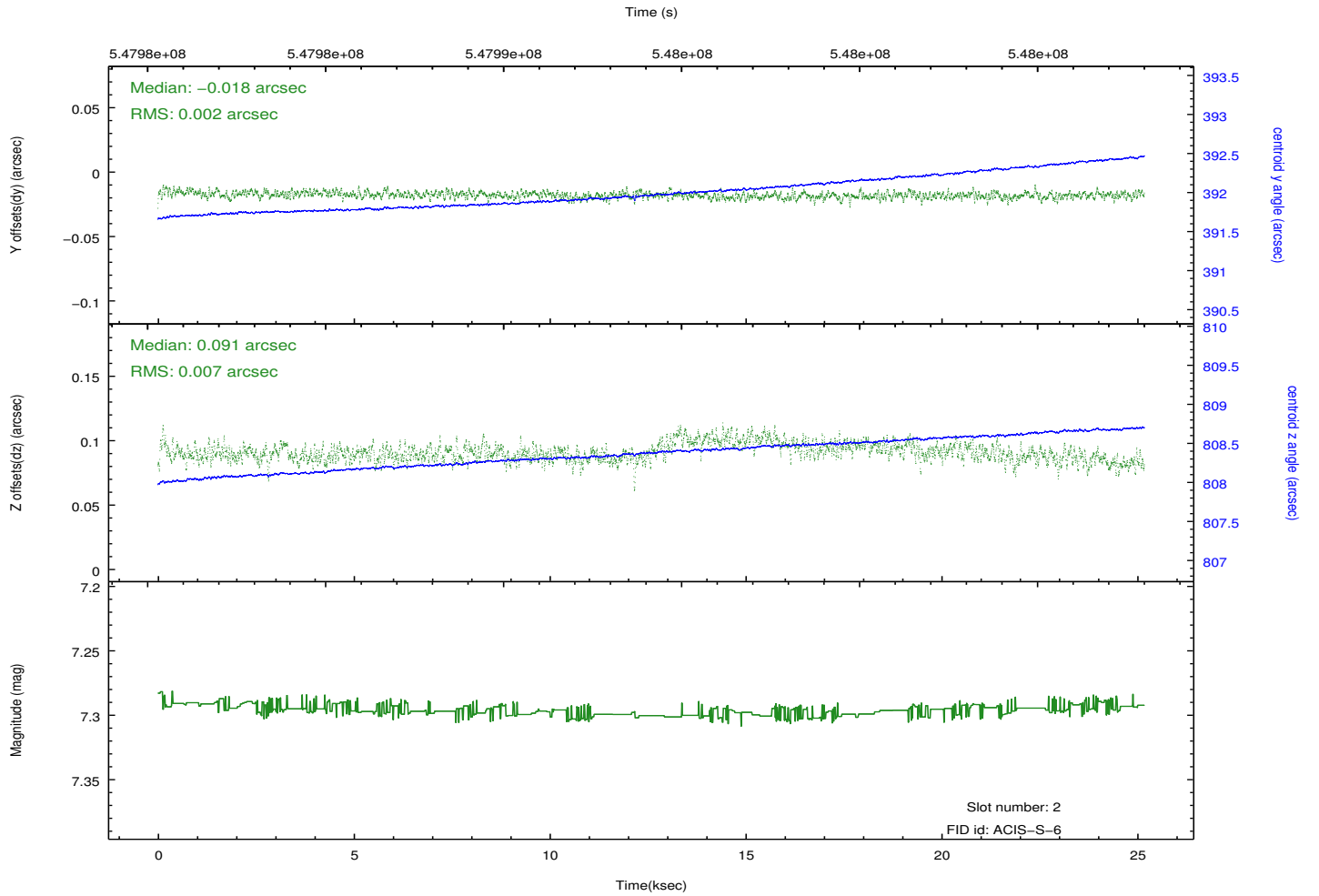
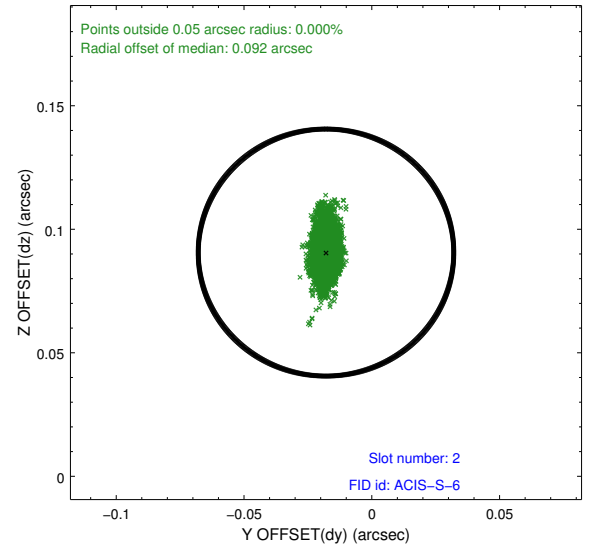
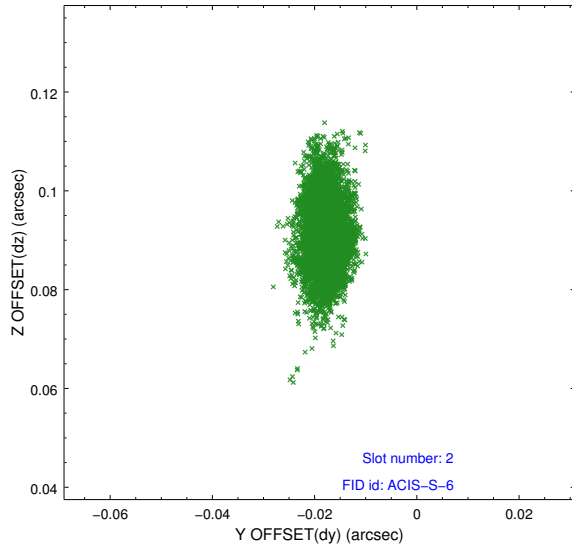
### 2.5.1 Slot 0



## 2.5.2 Slot 1



### 2.5.3 Slot 2



## A Summary

### A.1 Status

V&V Scientist	Joy Nichols
V&V Date (YYYY-MM-DD)	2015.05.15
V&V Edition	1
V&V Disposition and Status	OK
V&V Charge Time	25.069998505592

### A.2 Comments